

Verification Program at West Gulf River Forecast Center

National Weather Service
West Gulf River Forecast Center
Fort Worth, TX



WGRFC Verification Team

■ Duties

- ◆ Generate National Verification Statistics (Monthly)
- ◆ Generate Southern Region Statistics (Quarterly)
- ◆ Train staff/answer questions (almost never)
- ◆ Provide other verification statistics (approx 2 – 3 times/year)
 - ◆ In order to meet SR goals of Lead Time, POD, and FAR for Moderate Flooding, generated FY2006, FY2007, and FY2008 SR stats on top of routine duties.
 - ◆ Created stats for period of record of data for Lower Colorado River Authority
 - Stage
 - New Flow Forecasts



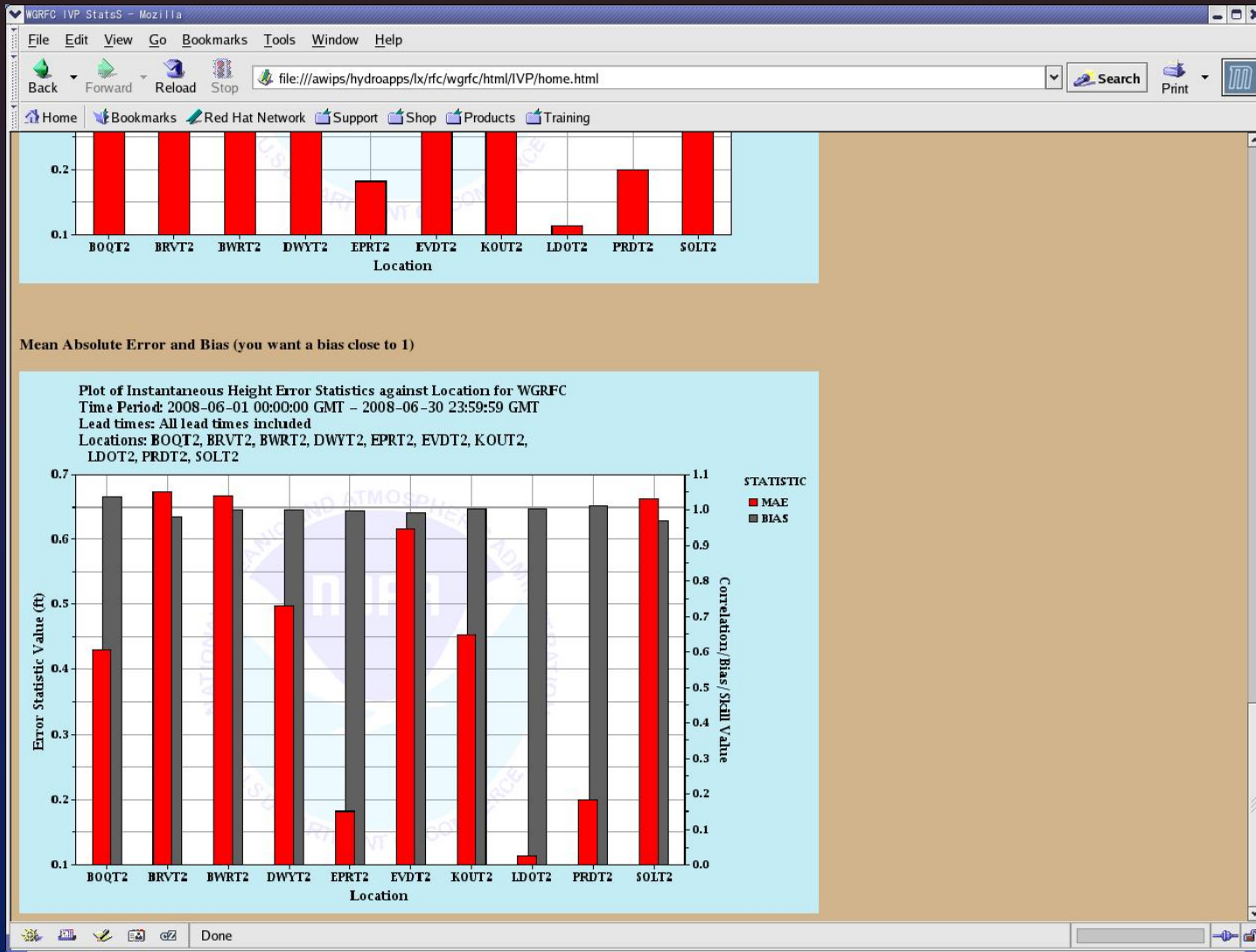
Example of “National” Work

- Using Netscape/Mozilla capabilities on AWIPS
 - ◆ Created links on AWIPS to display .png files from monthly stats
 - ◆ Related but not “national”
 - ◆ Also created series of web pages to display SR Categorical stats



Example AWIPS Intranet

West Gulf River Forecast Center
www.srh.noaa.gov/wgrfc

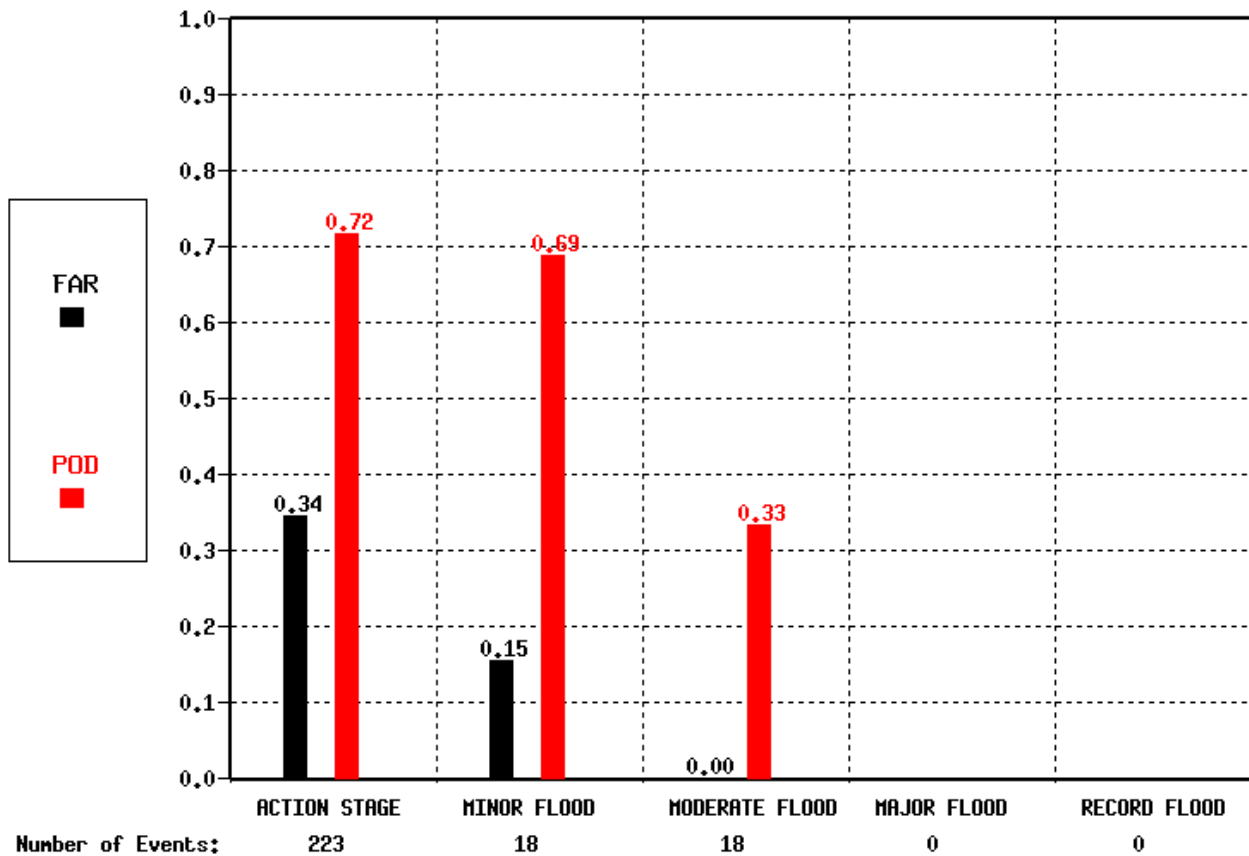




SR Categorical

West Gulf River Forecast Center
www.srh.noaa.gov/wgrfc

WGRFC Categorical River Forecast Verification Day 1
Period of Record: 2007-06-01_to_2007-07-15

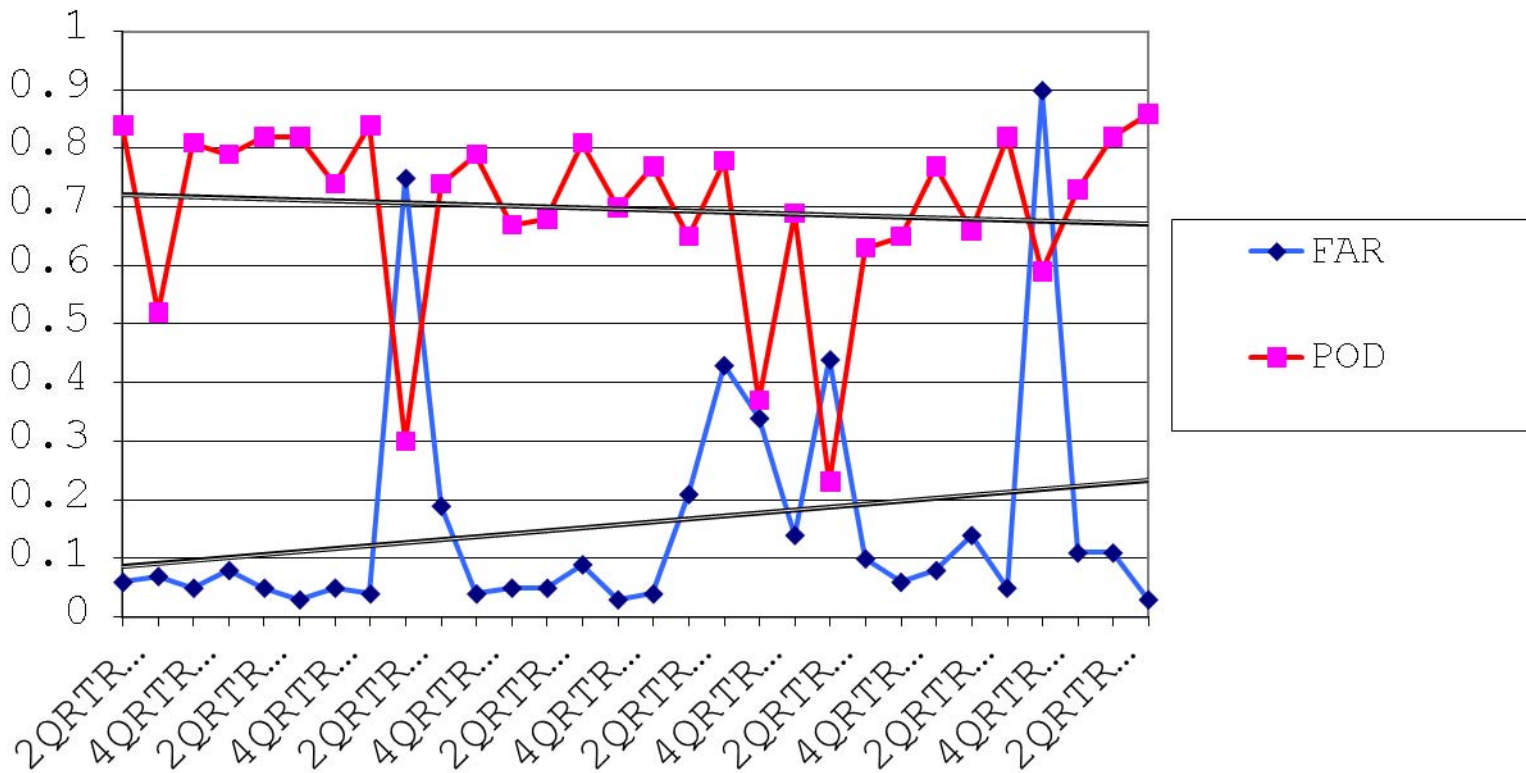




Sample of Quick Glance SR Categorical Stats

West Gulf River Forecast Center
www.srh.noaa.gov/wgrfc

WGRCF CRFFVS Stats





Combo of Web and Verification

West Gulf River Forecast Center
www.srh.noaa.gov/wgrfc

West Gulf River Forecast Center - Verification Case Study - Windows Internet Explorer

http://www.srh.noaa.gov/wgrfc/verification/verifcasestudy.php

National Weather Service
West Gulf
River Forecast Center

www.srh.noaa.gov

Home News Organization Search

Local forecast by "City, St" or zip code
City, St

Rivers & Hydrology
Observed and Forecast River Conditions
Forecasts & Info
Quick Briefing
5-Day Flood Outlook
Flash Flood Guidance
AHPS
Precip & Weather
Daily Observed
Hourly Observed
All Precip Data
Forecast
Radar
Climate & History
Nat'l Drought Info
Historical Floods
El Niño
La Niña
Additional Info
Related Links
WGRFC Special Forecasts

Hydrologic Verification of Tropical Storm Erin for the West Gulf River Forecast Center August 16-18, 2007

Rainfall

As most interests focused on Hurricane Dean crossing the Caribbean, Tropical Storm Erin formed and moved onshore near 16th, 2007, as a minimal Tropical Storm. History and experience has taught us that the strength of the tropical system is not in rainfall. Over the next 48 to 72 hours, heavy rain impacted South Central and West Central Texas, and Central Oklahoma as heavy rain impacted Southeast Texas associated with a training spiral band.

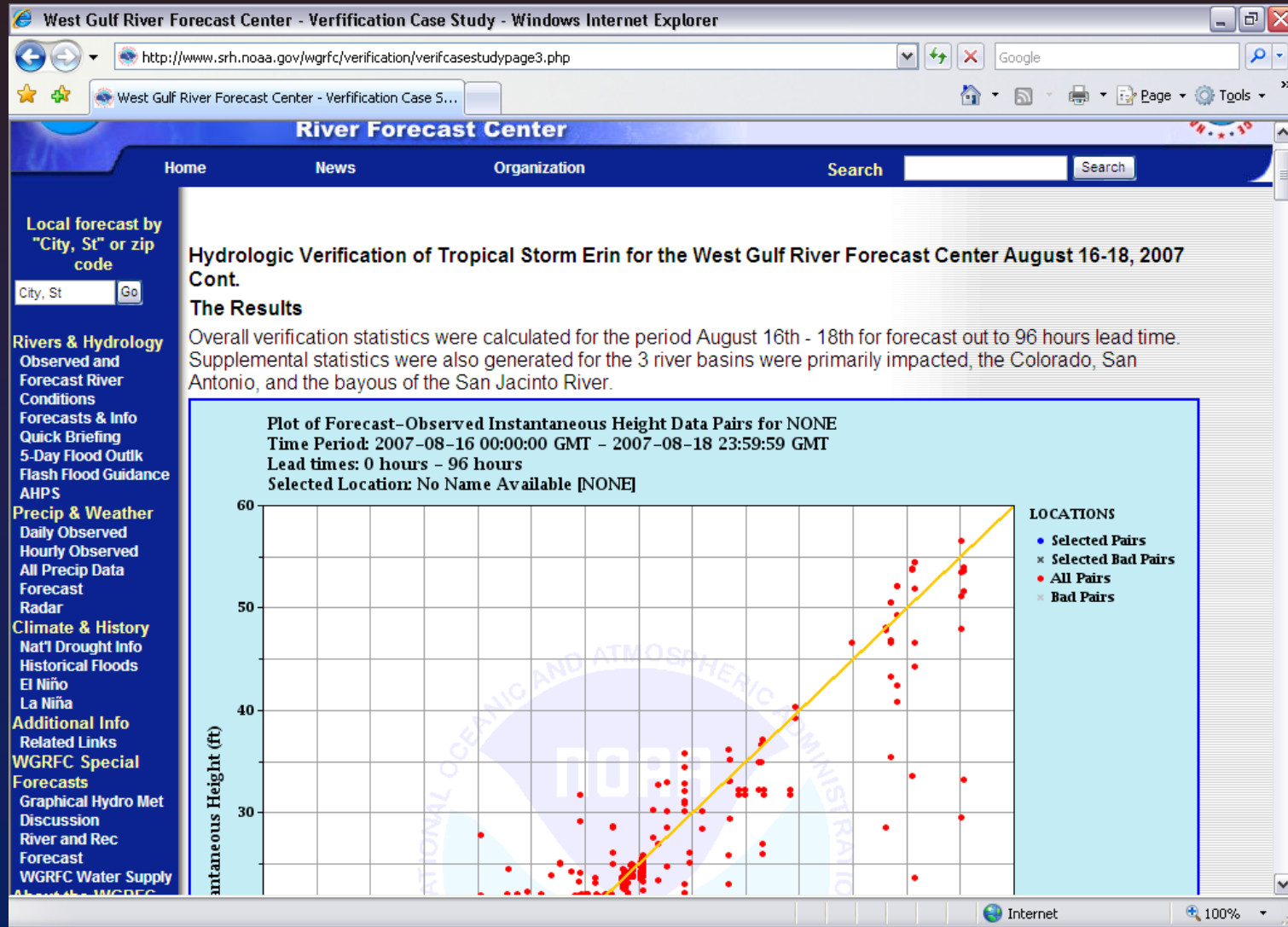
This is a geographical reference

Done Internet 100%



More Combo Work

West Gulf River Forecast Center
www.srh.noaa.gov/wgrfc

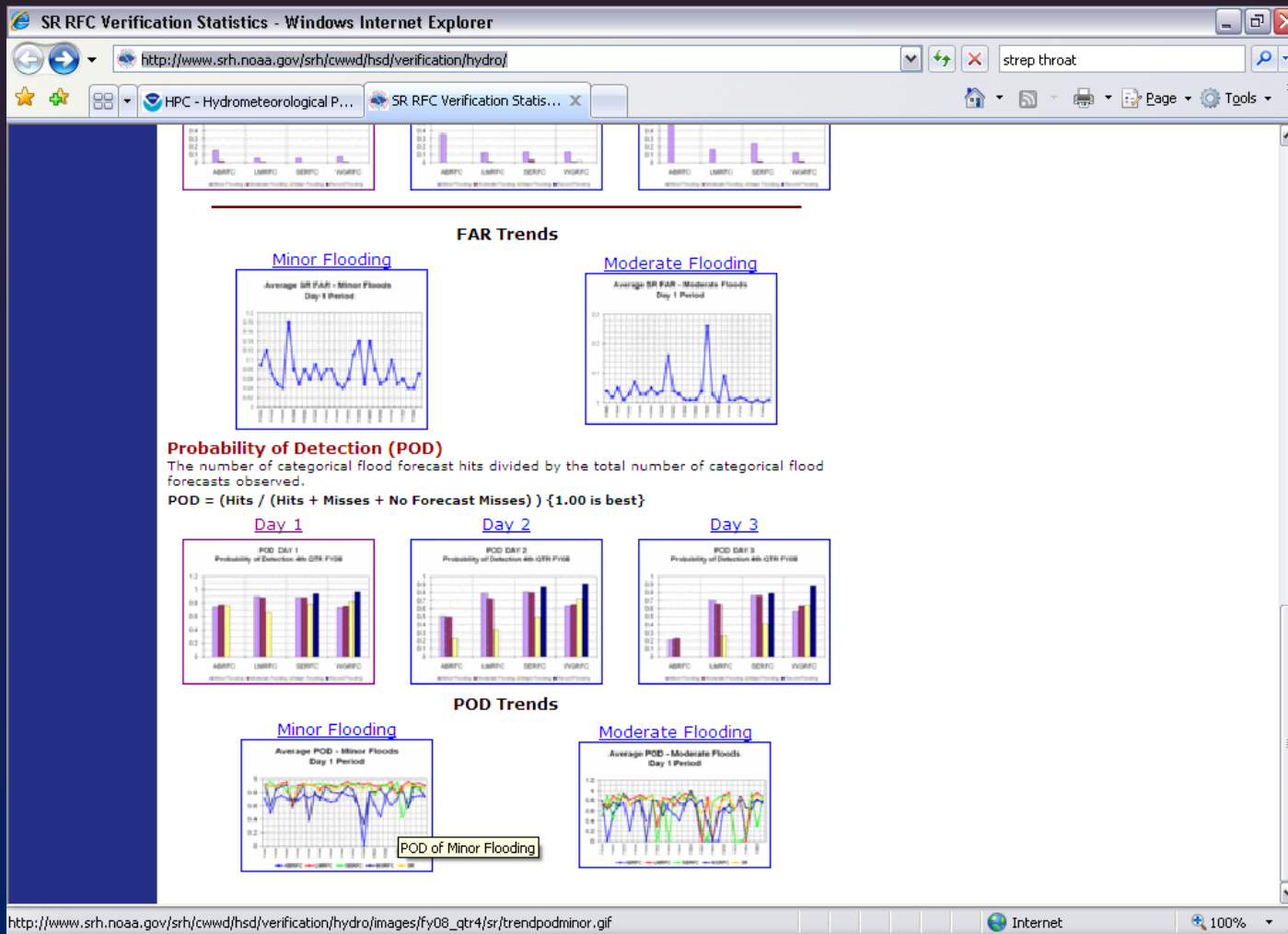




Work with SR Verification FPs

- <http://www.srh.noaa.gov/srh/cwwd/hsd/verification/hydro>

West Gulf River Forecast Center
www.srh.noaa.gov/wgrfc





Questions???

West Gulf River Forecast Center
www.srh.noaa.gov/wgrfc