



## Experimental NWM Streamflow Anomaly

Depicts seasonal streamflow anomalies over the contiguous U.S, derived by comparing streamflows from the analysis and assimilation configuration of the National Water Model (NWM) with historical modeled flows. The historical flows used are based on 7-day and 14- day moving average streamflow percentiles for each reach and the current calendar day.

**Configurations Available:** 7-day moving average streamflow  
14-day moving average streamflow

**Domains Available:** CONUS (All Configurations)

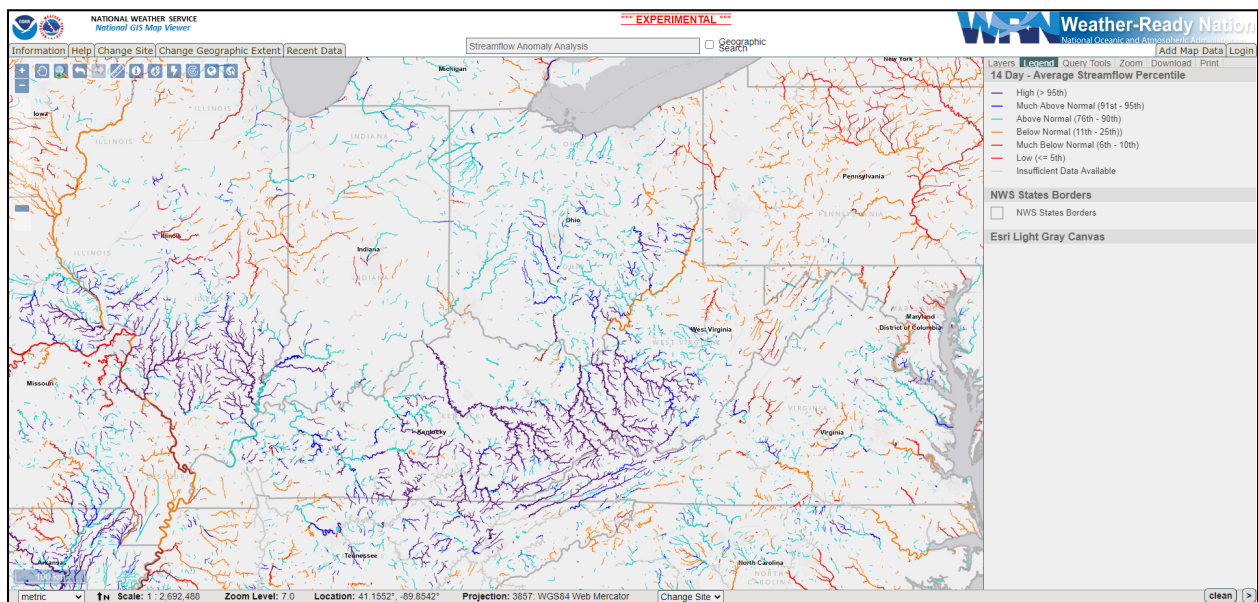


Figure: National GIS Map Viewer, depicting NWM-HydroVIS Streamflow Anomaly 14-Day Percentile.  
Image from 03 Aug 2022

[Public Handbook: NWC Visualization Services](#)

The NWS is accepting comments through December 31, 2022 on the Experimental NWC Visualization Services. This service is one of many Experimental NWC Visualization Services. Please provide feedback on the Experimental NWC Visualization Services at: [https://www.surveymonkey.com/r/Exp\\_NWCVisSvcs\\_2022](https://www.surveymonkey.com/r/Exp_NWCVisSvcs_2022)