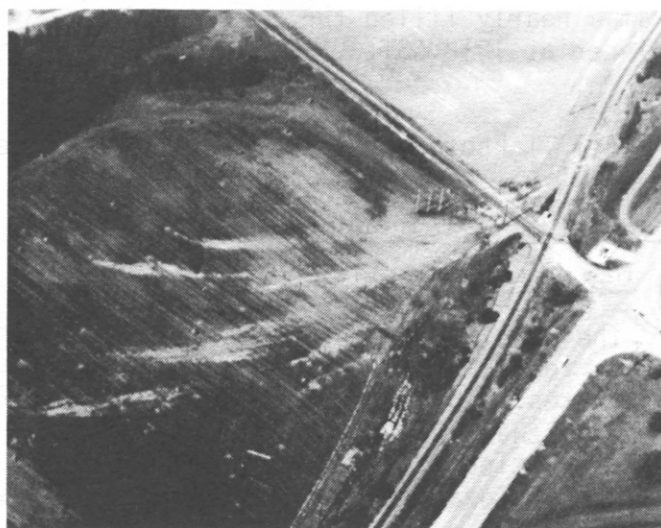
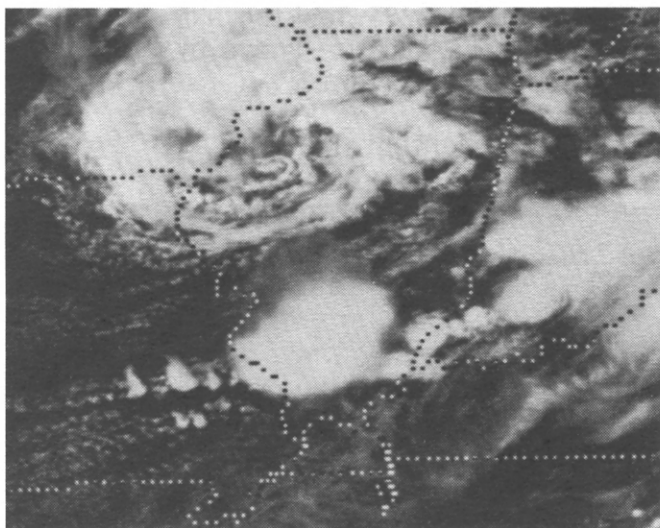
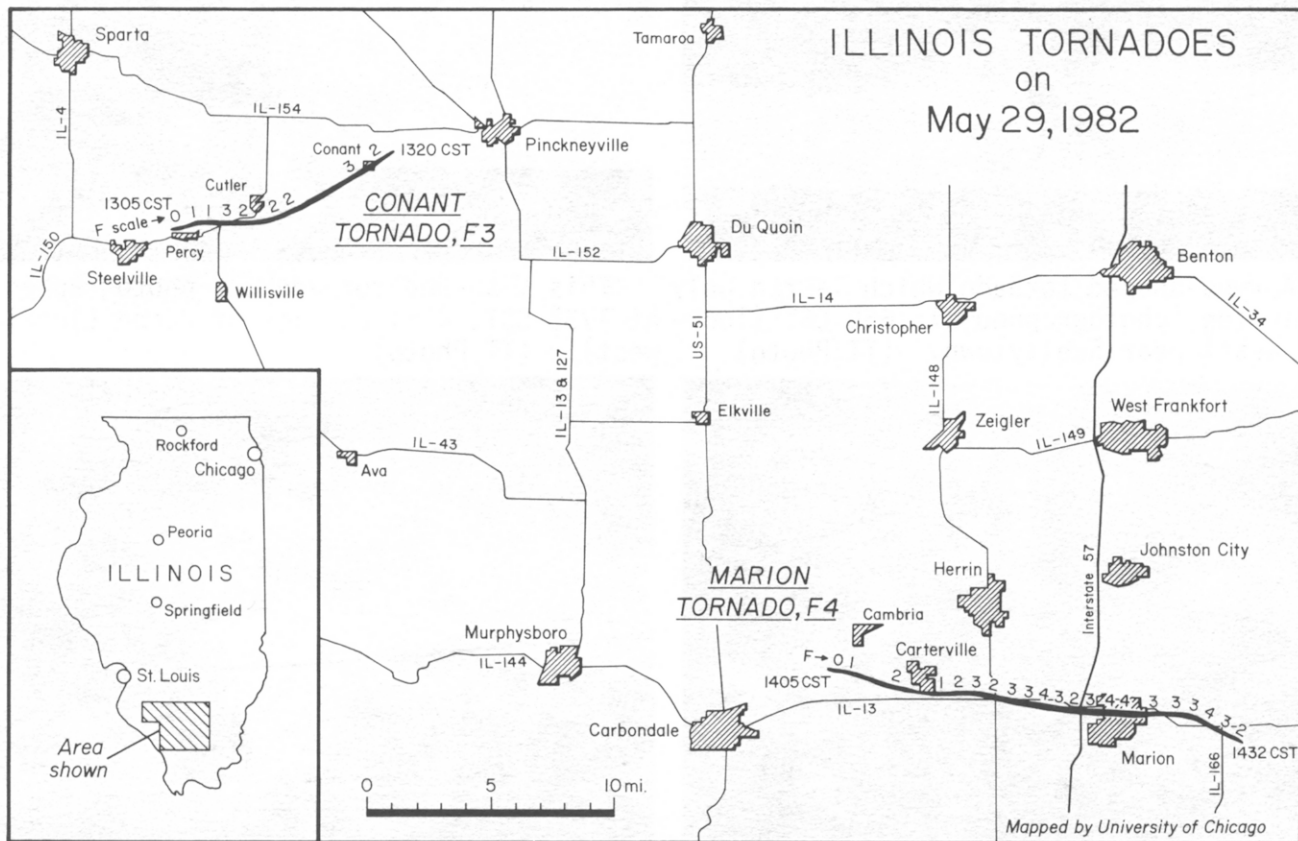
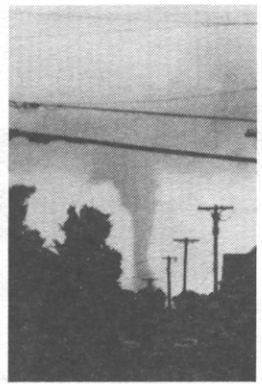


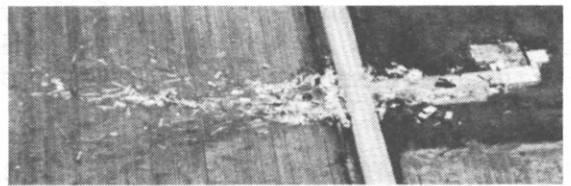
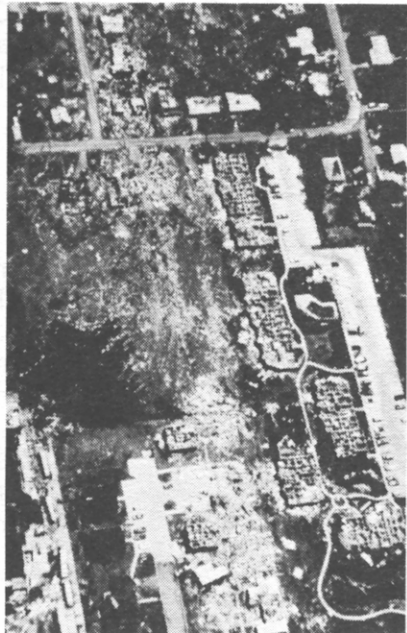
## 6. ILLINOIS TORNADES on May 29, 1982

Two major tornadoes occurred in southern Illinois on May 29th. The first, an F3, almost completely destroyed the small rural community of Conant. The second tornado carved a swath of F4 destruction through the north side of Marion, leaving 10 dead and 181 injured. The tornadoes paths, shown below with F scale indicated where possible, were mapped from a Cessna 182 on June 1st by Duane Stiegler, University of Chicago.





The cone-shaped vortex of the Marion Tornado (left) created a huge debris cloud (center) before it departed Marion (right). ---Photos by Ms. Sheila Eggert .



At left is the damage swath through Marion (looking west), and at right is what remains of the Shawnee Village apartments. (UC Photos)

Two pictures above show homes in the Marion area which were completely removed from their foundations. (UC Photo)



A new-car showroom in Marion in the direct path of the tornado. (UC Photo)



The Marion Town & Country Shopping Center which was cut in half. (UC Photo)

---All UC Photos by Duane Stiegler, University of Chicago.