

April 30, 2006 Severe Weather Outbreak

Picture of a possible funnel cloud or tornado on the west city limits of Lilbourn, MO on State Route D taken by Russell Riggs and sent via KFVS12:



Photo of large hail in Jackson, MO by Sean Magee sent via KFVS12



PRELIMINARY LOCAL STORM REPORT...SUMMARY
 NATIONAL WEATHER SERVICE PADUCAH KY
 840 PM CDT SUN APR 30 2006

..TIME...	...EVENT...	...CITY LOCATION...	...LAT.LON...
..DATE...	...MAG....	..COUNTY LOCATION..ST..	...SOURCE....
..REMARKS..			
0255 PM 04/30/2006	HAIL MO.88 INCH	SEDGEWICKVILLE BOLLINGER MO	37.52N 89.91W TRAINED SPOTTER
0255 PM 04/30/2006	HAIL MO.75 INCH	PIEDMONT WAYNE MO	37.15N 90.70W TRAINED SPOTTER
0344 PM 04/30/2006	HAIL M1.00 INCH	PINCKNEYVILLE PERRY IL	38.08N 89.38W TRAINED SPOTTER
0350 PM 04/30/2006	HAIL E1.50 INCH	PINCKNEYVILLE PERRY IL	38.08N 89.38W BROADCAST MEDIA
0400 PM 04/30/2006	HAIL E0.75 INCH	10 W HENDRICKSON BUTLER MO	36.90N 90.65W EMERGENCY MNGR
DIME SIZED HAIL IN NW BUTLER CNTY NEAR ELSINORE			
0400 PM 04/30/2006	HAIL E0.75 INCH	15 W HENDRICKSON CARTER MO	36.90N 90.74W AIRPLANE PILOT
DIME SIZED HAIL IN NW BUTLER NEAR ELSINORE			
0400 PM 04/30/2006	HAIL E0.25 INCH	2 N PINCKNEYVILLE PERRY IL	38.11N 89.38W TRAINED SPOTTER
QUARTER SIZED HAIL.			
0400 PM 04/30/2006	HAIL E0.75 INCH	WAPPAPELLO WAYNE MO	36.94N 90.27W EMERGENCY MNGR
DIME SIZED HAIL NEAR WAPPAPELLO AND SULFUR - REPORTED BY BUTLER CNTY EM			
0404 PM 04/30/2006	HAIL E1.75 INCH	ZALMA BOLLINGER MO	37.14N 90.08W EMERGENCY MNGR
GOLF BALL SIZED HAIL.			
0404 PM 04/30/2006	HAIL E0.75 INCH	JACKSON CAPE GIRARDEAU MO	37.38N 89.65W TRAINED SPOTTER
PEA TO DIME SIZED HAIL.			
0409 PM 04/30/2006	HAIL E0.75 INCH	9 N DONIPHAN RIPLEY MO	36.75N 90.82W TRAINED SPOTTER
PEA TO DIME SIZED HAIL.			
0415 PM 04/30/2006	HAIL E2.75 INCH	ZALMA BOLLINGER MO	37.14N 90.08W BROADCAST MEDIA
BASEBALL SIZED HAIL.			
0415 PM 04/30/2006	HAIL E1.75 INCH	10 W ADVANCE BOLLINGER MO	37.10N 90.10W EMERGENCY MNGR
GOLF BALL SIZED HAIL.			
0417 PM 04/30/2006	HAIL E1.00 INCH	ZALMA BOLLINGER MO	37.14N 90.08W TRAINED SPOTTER
NICKEL TO QUARTER SIZED HAIL - BOLLINGER CNTY			
0425 PM 04/30/2006	HAIL E0.75 INCH	1 N POPLAR BLUFF BUTLER MO	36.78N 90.41W EMERGENCY MNGR
DIME SIZED HAIL JUST N OF POPLAR BLUFF NEAR HWY 67 AND 60W.			
0427 PM 04/30/2006	HAIL E0.75 INCH	4 N DONIPHAN RIPLEY MO	36.68N 90.82W EMERGENCY MNGR
DIME SIZED HAIL.			
0430 PM 04/30/2006	HAIL MO.88 INCH	WHITEWATER CAPE GIRARDEAU MO	37.24N 89.80W EMERGENCY MNGR

0442 PM HAIL GRAND TOWER 37.64N 89.50W
04/30/2006 MO.75 INCH JACKSON IL LAW ENFORCEMENT

0447 PM HAIL 8 W POPLAR BLUFF 36.76N 90.55W
04/30/2006 M1.00 INCH BUTLER MO LAW ENFORCEMENT

EVENT OCCURRED IN THE COMMUNITY OF STRINGTOWN.

0457 PM HAIL ADVANCE 37.10N 89.91W
04/30/2006 MO.88 INCH STODDARD MO TRAINED SPOTTER

0458 PM HAIL POPLAR BLUFF 36.76N 90.41W
04/30/2006 M1.00 INCH BUTLER MO EMERGENCY MNGR

HIGHWAY 67 AND OAK GROVE.

0458 PM HAIL 1 S WAPPAPELLO 36.92N 90.27W
04/30/2006 MO.88 INCH BUTLER MO EMERGENCY MNGR

EVENT OCCURRED JUST SOUTH OF THE DAM.

0504 PM HAIL 3 W ADVANCE 37.10N 89.97W
04/30/2006 M1.75 INCH BOLLINGER MO LAW ENFORCEMENT

EVENT OCCURRED ON HIGHWAY BB. ALSO OCCURRED 4 SOUTH OF
ADVANCE. BROKE THROUGH WINDSHILD OF AMBULANCE.

0505 PM HAIL CHAFFEE 37.18N 89.66W
04/30/2006 M1.75 INCH SCOTT MO BROADCAST MEDIA

0519 PM HAIL VASTUS 36.55N 90.41W
04/30/2006 M1.00 INCH BUTLER MO EMERGENCY MNGR

EVENT OCCURRED NEAR INTERSECTION OF HIGHWAYS 160 AND 67.
DIME SIZE HAIL REPORTED IN SEVERAL SECTIONS OF SOUTHERN
BUTLER COUNTY.

0519 PM HAIL WOODLAWN 38.33N 89.04W
04/30/2006 EO.75 INCH JEFFERSON IL TRAINED SPOTTER

0523 PM HAIL NAYLOR 36.57N 90.61W
04/30/2006 MO.75 INCH RIPLEY MO EMERGENCY MNGR

HAIL COVERING GROUND.

0527 PM HAIL 5 S POPLAR BLUFF 36.69N 90.41W
04/30/2006 MO.75 INCH BUTLER MO EMERGENCY MNGR

EVENT REPORTED AT INTERSECTION OF HIGHWAYS MM AND 35.

0528 PM HAIL MURPHYSBORO 37.77N 89.34W
04/30/2006 M1.00 INCH JACKSON IL LAW ENFORCEMENT

0540 PM FUNNEL CLOUD BELL CITY 37.02N 89.82W
04/30/2006 STODDARD MO PUBLIC

REPORTED JUST SOUTH AND WEST OF BELL CITY. FUNNEL CLOUD
NEARING GROUND. TWO PUBLIC REPORTS RELAYED TO LAW
ENFORCEMENT.

0547 PM FUNNEL CLOUD 2 W DEXTER 36.79N 90.00W
04/30/2006 STODDARD MO PUBLIC

REPORTS RELAYED TO LAW ENFORCEMENT. OTHER REPORTS OF
FUNNEL CLOUD BETWEEN DEXTER AND SIKESTON AT INTERSECTION
OF HIGHWAYS 60 AND N.

0550 PM FUNNEL CLOUD GRAYRIDGE 36.82N 89.78W
04/30/2006 STODDARD MO TRAINED SPOTTER

EVENT OCCURRED ALONG HIGHWAY 60. VERY BRIEF TOUCHDOWN.
FUNNEL CLOUD MOVING EAST NORTHEAST TOWARD SCOTT COUNTY.
GOLFBALL HAIL REPORTED WITH STORM ALSO. EVENT RELAYED TO
EMERGENCY MANAGER.

0605 PM TSTM WND DMG 4 N COBDEN 37.59N 89.25W
04/30/2006 UNION IL BROADCAST MEDIA

TREES DOWN AND ONE HOME DAMAGED. UNCONFIRMED REPORT OF
FUNNEL CLOUD NEAR THE SAME AREA.

0610 PM TSTM WND DMG COBDEN 37.53N 89.25W
04/30/2006 UNION IL BROADCAST MEDIA

DOWNED TREES AND POWER LINES.

0630 PM HAIL 1 E SIKESTON 36.88N 89.56W
04/30/2006 MO.75 INCH SCOTT MO TRAINED SPOTTER

EVENT OCCURRED ON THE SCOTT/NEW MADRID COUNTY LINE NEAR INTERSECTION OF INTERSTATE HIGHWAYS 57 AND 55.

0653 PM HAIL CANALOU 36.75N 89.69W
04/30/2006 MO.75 INCH NEW MADRID MO TRAINED SPOTTER

0705 PM FUNNEL CLOUD 2 W TALLAPOOSA 36.51N 89.85W
04/30/2006 NEW MADRID MO LAW ENFORCEMENT

OBSERVED BY STATE POLICE. FUNNEL CLOUD WAS MOVING EAST TOWARD THE COMMUNITY.

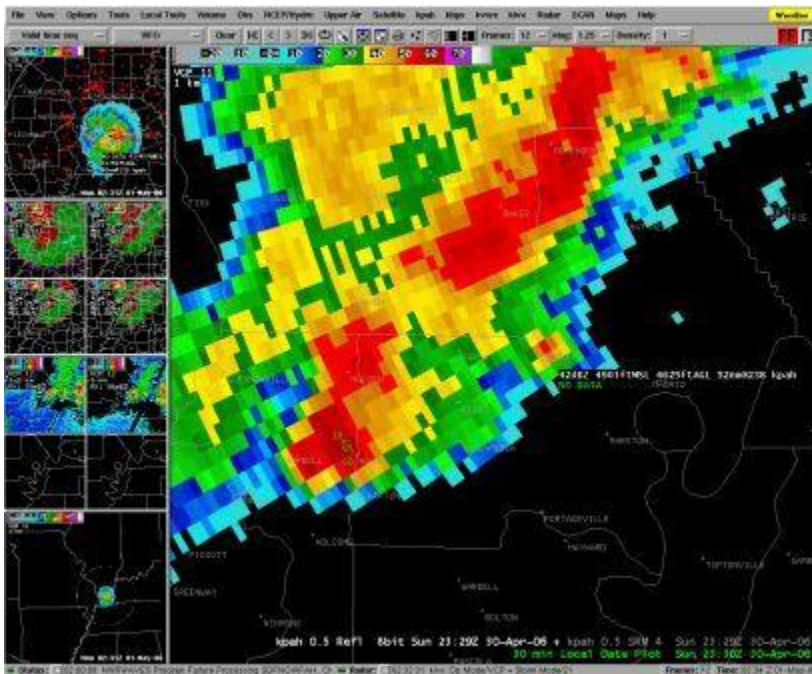
0718 PM TORNADO 4 SW PARMA 36.57N 89.87W
04/30/2006 NEW MADRID MO TRAINED SPOTTER

REPORTED TO STATE POLICE. TORNADO LIFTED AT 724 PM AND STORM IS TRACKING TOWARD THE COMMUNITY OF RISCO.

0741 PM FUNNEL CLOUD MARSTON 36.52N 89.61W
04/30/2006 NEW MADRID MO LAW ENFORCEMENT

NUMEROUS REPORTS TO SHERIFF OFFICE ON FUNNEL CLOUDS NEAR THE COMMUNITY OF MARSTON AND BETWEEN MARSTON AND PARMA. SOME PUBLIC REPORTS OF BRIEF TOUCHDOWNS. LAW ENFORCEMENT IS RESPONDING.

Below is a radar image of the tornadic storm as it entered western New Madrid Co., MO at 5:30 P.M. CDT. The cell with rotation is at the southern end of the line of storms.



Below is a graphic depiction of the severe weather watch boxes that were in effect at 5 P.M. The southeast portion of the larger Severe Thunderstorm Watch box was upgraded to a Tornado Watch. Cloud-to-ground lightning strikes in the one-hour period ending at 5 P.M. CDT are depicted in green. There are 2,721 strikes shown on the map.

