

# October 18, 2007 Severe Weather Outbreak

- The first round of severe weather occurred during the early morning hours on Thursday, mainly between midnight and 5 A.M. Wind damage was quite common across parts of southern Illinois and southeast Missouri overnight. The primary corridor of wind damage extended from the Poplar Bluff area northeast across Benton Illinois. Most of the damage was tree damage. Some minor structural damage and windows blown out were reported. A preliminary summary of local storm reports follows at the end of this statement.
- A second severe weather outbreak occurred during the afternoon and evening hours on Thursday. The Paducah National Weather Service office issued over 130 warnings during the 24 hours ending at 10 P.M. Thursday. Numerous supercells occurred on Thursday afternoon and evening. A number of these supercells were associated with damage. The National Weather Service office in Paducah is conducting ground surveys today to obtain a better assessment of the type and extent of the damage that occurred Thursday afternoon and evening.
- The most significant damage was reported in Daviess County, KY (including Owensboro), Sebree, KY (Webster County), Nortonville, KY (Hopkins County), and just south of Dawson Springs, KY (near Caldwell/Christian County line). Preliminary storm reports indicated some structures were heavily damaged or destroyed, and some injuries occurred. More detailed information will be released during the coming days as damage surveys are completed by NWS personnel.

PRELIMINARY LOCAL STORM REPORT...SUMMARY  
NATIONAL WEATHER SERVICE PADUCAH KY  
950 PM CDT THU OCT 18 2007

..TIME...	...EVENT...	...CITY LOCATION...	...LAT.LON...
..DATE...	...MAG....	..COUNTY LOCATION..ST..	...SOURCE....
	..REMARKS..		

1020 PM	TSTM WND DMG	NEW MADRID	36.59N 89.55W
10/17/2007		NEW MADRID	MO TRAINED SPOTTER

LATE REPORT. TWO TREES BLOWN DOWN IN COMMUNITY ASSOCIATED WITH BAND OF THUNDERSTORMS AND HEAVY RAIN.

0124 AM	TSTM WND GST	DONIPHAN	36.62N 90.82W
10/18/2007	M56.00 MPH	RIPLEY	MO LAW ENFORCEMENT

0126 AM	NON-TSTM WND DMG	DONIPHAN	36.62N 90.82W
10/18/2007		RIPLEY	MO EMERGENCY MNGR

WIDESPREAD MINOR DAMAGE WITH LINE OF THUNDERSTORMS. TREES AND POWER LINES DOWN. DAMAGE TO MOBILE HOME. EM TEAM CONDUCTING SURVEY AT THIS TIME. RADAR INDICATED STORM MOVED THROUGH COMMUNITY AT 126 AM.

0145 AM	TSTM WND DMG	3 N POPLAR BLUFF	36.81N 90.41W
10/18/2007		BUTLER	MO LAW ENFORCEMENT

DOWNED POWER LINES NORTH OF POPLAR BLUFF. ESTIMATED WINDS IN POPLAR BLUFF 65-70 MPH.

0222 AM	TSTM WND DMG	4 SE MARBLE HILL	37.26N 89.93W
10/18/2007		BOLLINGER	MO LAW ENFORCEMENT

DOWNED POWER LINES IN THE LEOPOLD AREA. NUMEROUS POWER OUTAGES REPORTED.

0230 AM	TSTM WND DMG	BENTON	37.10N 89.56W
10/18/2007		SCOTT	MO LAW ENFORCEMENT

NUMEROUS TREES REPORTED DOWN THROUGHOUT THE COUNTY.

0235 AM TSTM WND DMG DEXTER 36.79N 89.96W  
10/18/2007 STODDARD MO LAW ENFORCEMENT

ROOF DAMAGE TO BUILDING ALONG EAST STODDARD STREET. NO INJURIES REPORTED AT THIS TIME. POWER LINES DOWN JUST EAST OF HIGHWAY 25.

0240 AM TSTM WND DMG 2 N MOUNDS 37.14N 89.20W  
10/18/2007 PULASKI IL LAW ENFORCEMENT

DOWNED TREES BLOCKING HIGHWAY 51 NORTH OF MOUNDS.

0240 AM TSTM WND DMG MILLERSVILLE 37.42N 89.80W  
10/18/2007 CAPE GIRARDEAU MO EMERGENCY MNGR

BUILDING AND VEHICLE DAMAGE REPORTED IN COMMUNITY. EM TEAM RESPONDING AT THIS TIME. MUCH OF NORTHEAST CAPE GIRARDEAU COUNTY WITHOUT POWER.

0250 AM TSTM WND DMG MURPHYSBORO 37.77N 89.34W  
10/18/2007 JACKSON IL EMERGENCY MNGR

WINDOWS BROKEN BY WIND...POWER OUTAGES.

0255 AM TSTM WND DMG CARBONDALE 37.72N 89.22W  
10/18/2007 JACKSON IL EMERGENCY MNGR

TREE DOWN ON TWO CARS...BROKEN POWER POLE...TREES DOWN ON POWER LINES. ELECTRIC SERVICE TORN OFF POLE.

0255 AM TSTM WND DMG DE SOTO 37.82N 89.23W  
10/18/2007 JACKSON IL EMERGENCY MNGR

TREE FELL ON A HOUSE.

0255 AM TSTM WND DMG ANNA 37.46N 89.24W  
10/18/2007 UNION IL LAW ENFORCEMENT

WIDESPREAD DOWNED TREES AND POWERLINES THROUGHOUT THE COUNTY.

0300 AM TSTM WND DMG EAST PRAIRIE 36.78N 89.38W  
10/18/2007 MISSISSIPPI MO UTILITY COMPANY

POWER LINES DOWN

0300 AM TSTM WND DMG CAPE GIRARDEAU 37.31N 89.55W  
10/18/2007 CAPE GIRARDEAU MO TRAINED SPOTTER

TWO TREES DOWN IN THE CITY OF CAPE GIRARDEAU

0302 AM TSTM WND GST 1 NE CAPE GIRARDEAU 37.32N 89.54W  
10/18/2007 E60.00 MPH CAPE GIRARDEAU MO TRAINED SPOTTER

60 MPH WIND GUST ESTIMATED 1 MI NORTHEAST OF CAPE GIRARDEAU

0310 AM TSTM WND DMG MOREHOUSE 36.85N 89.69W  
10/18/2007 NEW MADRID MO LAW ENFORCEMENT

TWO TELEPHONE POLES AND THREE TREES DOWN.

0314 AM TSTM WND DMG MASONVILLE 37.67N 87.03W  
10/18/2007 DAVIESS KY EMERGENCY MNGR

\*\*\* 2 INJ \*\*\* TREE DOWN ON MOBILE HOME. TWO OTHER TREES DOWN BLOCKING ROADS IN THE SAME AREA. TWO ADULTS WERE BRIEFLY TRAPPED IN THE MOBILE HOME.

0314 AM TSTM WND DMG 4 N EDDYVILLE 37.56N 88.59W

10/18/2007 POPE IL EMERGENCY MNGR  
 TREE BLOCKING SOUTH BOUND LANE OF IL RT 145 4 MI NORTH OF  
 EDDYVILLE, IL

0315 AM TSTM WND DMG 2 N BUCKNER 38.01N 89.02W  
 10/18/2007 FRANKLIN IL EMERGENCY MNGR  
 42 BY 48 FOOT POLE BARN DESTROYED.

0315 AM TSTM WND DMG JOHNSTON CITY 37.82N 88.93W  
 10/18/2007 WILLIAMSON IL TRAINED SPOTTER  
 TWO TREES DOWN IN JOHNSTON CITY, IL

0318 AM TSTM WND DMG 2 N MOUNDS 37.14N 89.20W  
 10/18/2007 PULASKI IL EMERGENCY MNGR  
 TWO TREES DOWN ON HWY 936...JUST SOUTH OF VILLA RIDGE.  
 OTHER SMALL TREES DOWN ACROSS SOUTHERN EDGE OF COUNTY.

0324 AM TSTM WND GST VALIER 38.02N 89.04W  
 10/18/2007 E60.00 MPH FRANKLIN IL TRAINED SPOTTER  
 ESTIMATED 60 MPH WIND GUST IN VALIER, IL

0327 AM TSTM WND GST MARION 37.73N 88.94W  
 10/18/2007 E60.00 MPH WILLIAMSON IL TRAINED SPOTTER  
 60 MPH WIND GUST ESTIMATED BY STORM CHASER...LIMBS DOWN  
 AND POWER OUT IN THE TOWN OF MARION, IL

0330 AM TSTM WND DMG BENTON 38.01N 88.92W  
 10/18/2007 FRANKLIN IL LAW ENFORCEMENT  
 WIDESPREAD DOWN TREES AND POWER LINES COUNTY WIDE.

0332 AM TSTM WND DMG WEST FRANKFORT 37.90N 88.93W  
 10/18/2007 FRANKLIN IL EMERGENCY MNGR  
 TREE DOWN ON TOP OF HOUSE IN WEST FRANKFORT, IL

0337 AM TSTM WND DMG 6 N MARION 37.82N 88.94W  
 10/18/2007 WILLIAMSON IL TRAINED SPOTTER  
 DOWNED TREES REPORTED IN JOHNTSON CITY. WINDS MEASURED AT  
 62 MPH.

0340 AM TSTM WND DMG 5 S MCLEANSBORO 38.02N 88.53W  
 10/18/2007 HAMILTON IL LAW ENFORCEMENT  
 DOWNED TREES BLOCKING HIGHWAY 142S.

0345 AM TSTM WND GST CAIRO 37.00N 89.18W  
 10/18/2007 E60.00 MPH ALEXANDER IL LAW ENFORCEMENT

0348 AM TSTM WND DMG SIMS 38.36N 88.54W  
 10/18/2007 WAYNE IL LAW ENFORCEMENT  
 FEW TREES AND POWER LINES DOWN. MORE POWER LINES DOWN IN  
 RINARD AT ABOUT THE SAME TIME.

0355 AM TSTM WND DMG 1 SE BARLOW 37.04N 89.03W  
 10/18/2007 BALLARD KY TRAINED SPOTTER  
 TREES DOWN IN SLATER ROAD AREA.

0445 AM TSTM WND DMG MOUNT CARMEL 38.42N 87.77W  
 10/18/2007 WABASH IL LAW ENFORCEMENT

DOWNED TREE BLOCKING INTERSECTION OF 12TH STREET AND WALNUT.

0450 PM HAIL 4 SE STURGIS 37.51N 87.94W  
10/18/2007 MO.50 INCH UNION KY EMERGENCY MNGR

HAIL REPORTED NEAR SULLIVAN.

0455 PM TORNADO CLAY 37.48N 87.82W  
10/18/2007 WEBSTER KY EMERGENCY MNGR

REPORTED TO EM BY PUBLIC. TORNADO NEAR CLAY AT INTERSECTION OF HIGHWAYS 109 AND 270W MOVING TOWARD DIXON.

0505 PM HAIL 6 NE DIXON 37.58N 87.61W  
10/18/2007 MO.75 INCH WEBSTER KY LAW ENFORCEMENT

HAIL REPORTED NEAR COMMUNITY OF POOLE

0508 PM HAIL PERRYVILLE 37.73N 89.87W  
10/18/2007 MO.75 INCH PERRY MO TRAINED SPOTTER

0530 PM TSTM WND DMG 6 N BLOOMFIELD 36.98N 89.93W  
10/18/2007 STODDARD MO EMERGENCY MNGR

UPDATE REPORT. EVENT OCCURRED AT 530 PM. NUMEROUS TREES AND POWER LINES DOWN NEAR INTERSECTION OF HIGHWAYS K AND M.

0534 PM FUNNEL CLOUD 10 SW OWENSBORO 37.66N 87.25W  
10/18/2007 DAVIESS KY EMERGENCY MNGR

FUNNEL CLOUD REPORTED NEAR THE COMMUNITY OF ST. JOSEPH. UPDATE AT 815PM...CONFIRMED MULTIPLE INJURIES REPORTED THROUGH NWS OFFICE IN LOUISVILLE.

0546 PM HAIL 3 W OWENSBORO 37.76N 87.17W  
10/18/2007 MO.88 INCH DAVIESS KY TRAINED SPOTTER

NICKLE SIZE HAIL REPORTED NEAR SORGHO.

0550 PM TSTM WND DMG 1 N CAYCE 36.56N 89.04W  
10/18/2007 FULTON KY EMERGENCY MNGR

HIGHWAY 239 ROAD BLOCKED FROM DOWNED TREES.

0552 PM HAIL DIXON 37.52N 87.69W  
10/18/2007 MO.88 INCH WEBSTER KY LAW ENFORCEMENT

0559 PM TSTM WND DMG 4 N DU QUOIN 38.06N 89.24W  
10/18/2007 PERRY IL LAW ENFORCEMENT

TREE DAMAGE EAST OF HWY 51

0602 PM FUNNEL CLOUD 3 SW OWENSBORO 37.73N 87.16W  
10/18/2007 DAVIESS KY EMERGENCY MNGR

REPORTED WITHIN THE BYPASS SOUTH OF HIGHWAYS 81 AND 56

0603 PM HAIL SESSER 38.09N 89.05W  
10/18/2007 M1.25 INCH FRANKLIN IL TRAINED SPOTTER

0604 PM HAIL 1 W SESSER 38.09N 89.07W  
10/18/2007 M1.00 INCH FRANKLIN IL TRAINED SPOTTER

0605 PM HAIL 2 N WEST CITY 38.02N 88.95W  
10/18/2007 M1.75 INCH FRANKLIN IL EMERGENCY MNGR

GOLFBALL SIZE HAIL.

0605 PM	TORNADO	8 W MAYFIELD		36.74N 88.79W
10/18/2007		GRAVES	KY	LAW ENFORCEMENT
	CONFIRMED TORNADO NEAR DUBLIN.			
0608 PM	HAIL	OWENSBORO		37.76N 87.12W
10/18/2007	M1.00 INCH	DAVISS	KY	TRAINED SPOTTER
	REPORTED IN DOWNTOWN AREA.			
0610 PM	HAIL	SESSER		38.09N 89.05W
10/18/2007	M1.75 INCH	FRANKLIN	IL	LAW ENFORCEMENT
	GOLFBALL SIZE HAIL			
0610 PM	TSTM WND DMG	8 E OWENSBORO		37.76N 86.97W
10/18/2007		DAVISS	KY	EMERGENCY MNGR
	HOME LOST ROOF ALONG HIGHWAY 144.			
0610 PM	HAIL	2 S INA		38.12N 88.90W
10/18/2007	M1.25 INCH	FRANKLIN	IL	LAW ENFORCEMENT
	LATE REPORT. HALF DOLLAR SIZE HAIL WITH WIND GUST ESTIMATED 60 MPH NEAR THE BIG MUDDY CORRECTIONAL CENTER.			
0614 PM	FUNNEL CLOUD	4 W OWENSBORO		37.76N 87.19W
10/18/2007		DAVISS	KY	EMERGENCY MNGR
	FUNNEL CLOUD REPORTED NEAR THE COMMUNITY OF PANTHER			
0615 PM	FUNNEL CLOUD	8 SW GRANDVIEW		37.86N 87.09W
10/18/2007		SPENCER	IN	TRAINED SPOTTER
	FUNNEL CLOUD REPORTED 1SW OF ROCKPORT.			
0617 PM	FUNNEL CLOUD	10 SW EDDYVILLE		36.97N 88.21W
10/18/2007		LYON	KY	LAW ENFORCEMENT
	REPORTED ALONG INTERSTATE 24 NEAR MILE MARKER 32.			
0617 PM	FUNNEL CLOUD	10 W MCLEANSBORO		38.09N 88.72W
10/18/2007		FRANKLIN	IL	EMERGENCY MNGR
	FUNNEL CLOUD OBSERVED ON NORTH SIDE OF HIGHWAY 14 BETWEEN BENTON AND MCLEANSBORO. OBSERVED BY TWO TRAINED STORM SPOTTERS.			
0620 PM	HAIL	5 NE OWENSBORO		37.81N 87.05W
10/18/2007	M1.75 INCH	DAVISS	KY	EMERGENCY MNGR
0625 PM	HAIL	E INA		38.15N 88.90W
10/18/2007	M1.00 INCH	JEFFERSON	IL	TRAINED SPOTTER
0628 PM	TORNADO	OWENSBORO		37.76N 87.12W
10/18/2007		DAVISS	KY	EMERGENCY MNGR
	LATE REPORT. UNCONFIRMED TORNADO HALF WAY BETWEEN MOSELEYVILLE AND UTICA. BRIEF TOUCHDOWN.			
0629 PM	HAIL	4 SW OWENSBORO		37.72N 87.17W
10/18/2007	M0.75 INCH	DAVISS	KY	TRAINED SPOTTER
0650 PM	TSTM WND DMG	4 E BENTON		36.85N 88.29W
10/18/2007		MARSHALL	KY	TRAINED SPOTTER
	NUMEROUS TREES DOWN IN THE COMMUNITY OF FAIRDEALING.			
0650 PM	HAIL	DRAFFENVILLE		36.94N 88.34W

10/18/2007 M0.25 INCH MARSHALL KY FIRE DEPT/RESCUE  
 PEA SIZE HAIL WITH WIND GUSTS 40 TO 50 MPH.

0700 PM HAIL SEBREE 37.60N 87.53W  
 10/18/2007 M1.75 INCH WEBSTER KY EMERGENCY MNGR

0711 PM FUNNEL CLOUD 1 N HENDERSON 37.85N 87.58W  
 10/18/2007 HENDERSON KY EMERGENCY MNGR  
 VISIBLE SIGHTING OF FUNNEL CLOUD OVER THE HENDERSON AREA.

0719 PM TORNADO 3 W SEBREE 37.60N 87.58W  
 10/18/2007 WEBSTER KY TRAINED SPOTTER  
 TORNADO REPORTED WEST OF SEBREE HEADING TOWARD THE  
 COMMUNITY.

0720 PM TORNADO SEBREE 37.60N 87.53W  
 10/18/2007 WEBSTER KY BROADCAST MEDIA  
 POSSIBLE TORNADO. REPORT OF STRUCTURAL DAMAGE WITH MEDIA  
 NEWS MEDIA GOING TO COMMUNITY AT 730 PM.

0740 PM TSTM WND DMG PRINCETON 37.11N 87.88W  
 10/18/2007 CALDWELL KY LAW ENFORCEMENT  
 SIDE OF HOME DESTROYED.

0740 PM TORNADO DAWSON SPRINGS 37.17N 87.69W  
 10/18/2007 HOPKINS KY STORM CHASER  
 UNCONFIRMED TORNADO.

0742 PM FUNNEL CLOUD 2 E SEBREE 37.60N 87.49W  
 10/18/2007 WEBSTER KY TRAINED SPOTTER  
 REPORTED JUST EAST OF SEBREE MOVING NE TOWARD BEACH GROVE  
 AND THE ST. JOSEPH AREA.

0745 PM TORNADO 10 NW HOPKINSVILLE 36.96N 87.62W  
 10/18/2007 CHRISTIAN KY EMERGENCY MNGR  
 UNCONFIRMED TORNADO REPORTED NEAR THE PENNYRILE FOREST  
 STATE RESORT PARK. CONFIRMED DAMAGE WITH INJURIES. TOTAL  
 INJURIES UNKNOWN AT THIS TIME.

0751 PM FUNNEL CLOUD 6 W OWENSBORO 37.76N 87.23W  
 10/18/2007 DAVIESS KY TRAINED SPOTTER

0758 PM TSTM WND DMG 10 SW OWENSBORO 37.66N 87.25W  
 10/18/2007 DAVIESS KY EMERGENCY MNGR  
 WIDESPREAD DAMAGE REPORTED IN AND NEAR THE COMMUNITY OF  
 WEST LOUISVILLE. EM OFFICE INUNDATED WITH CALLS. ONE  
 MOBILE HOME DESTROYED. NO REPORTS OF INJURIES AT THIS  
 TIME.

0800 PM TORNADO NORTONVILLE 37.19N 87.46W  
 10/18/2007 HOPKINS KY LAW ENFORCEMENT  
 UNCONFIRMED. SEVERAL BUILDINGS RECEIVED SEVERE DAMAGE.  
 TIME APPROXIMATE. UPDATE 835PM...REPORT FROM EM THAT  
 THERE ARE MULTIPLE INJURIES WITH INDIVIDUALS STILL  
 TRAPPED IN DEBRIE.

0800 PM HAIL MURRAY 36.61N 88.32W  
 10/18/2007 M0.75 INCH CALLOWAY KY AMATEUR RADIO

0801 PM FLASH FLOOD PRINCETON 37.11N 87.88W  
10/18/2007 CALDWELL KY TRAINED SPOTTER

REPORTED ALONG HIGHWAY 293.

0804 PM TSTM WND GST MORTONS GAP 37.24N 87.47W  
10/18/2007 E60.00 MPH HOPKINS KY TRAINED SPOTTER

0809 PM TORNADO 2 S DAWSON SPRINGS 37.14N 87.69W  
10/18/2007 CALDWELL KY EMERGENCY MNGR

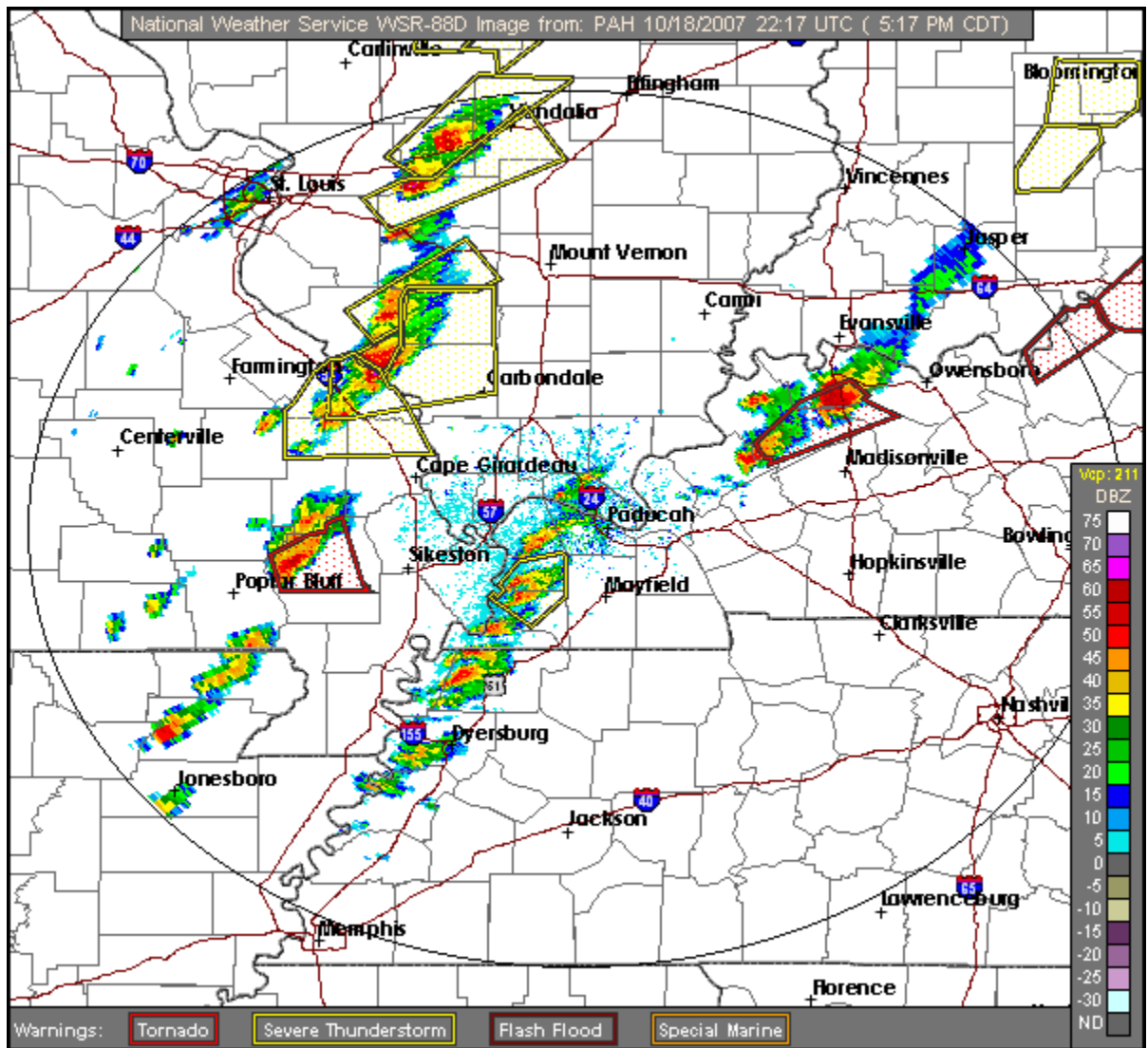
CONFIRMED TORNADO ALONG DAWSON SPRINGS ROAD. INDIVIDUALS  
TRAPPED IN MOBILE HOME. EMERGENCY RESPONDERS GOING TO  
AREA AT THIS TIME.

0815 PM HAIL MAYFIELD 36.74N 88.65W  
10/18/2007 M0.75 INCH GRAVES KY TRAINED SPOTTER

0844 PM TORNADO 10 W HOPKINSVILLE 36.85N 87.67W  
10/18/2007 CHRISTIAN KY EMERGENCY MNGR

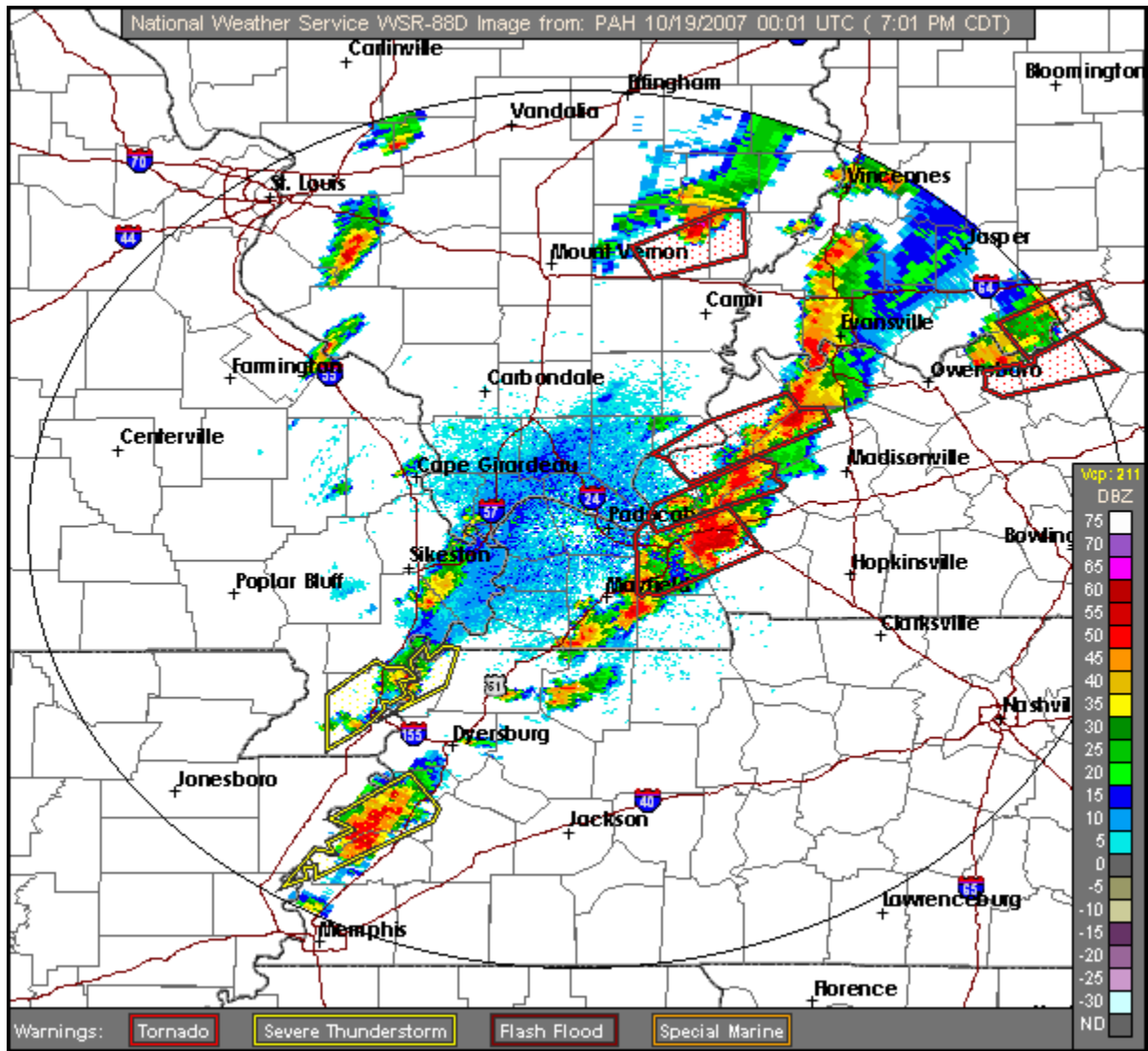
UNCONFIRMED TORNADO NEAR THE COMMUNITY NEAR JULIAN MOVING  
TOWARDS DOWNTOWN HOPKINSVILLE.

Paducah radar imagery around 5:30 P.M. CDT October 18, 2007.





Radar Imagery at 7 PM CDT.



## **LIST OF TORNADOES**

<b>COUNTY ,STATE</b>	<b>RATING</b>	<b>TIME</b>	<b>WIND SPEED</b>	<b>PATH LENGTH</b>	<b>PATH WIDTH</b>	<b>LOCATION/DESCRIPTION:</b>
<b>EDWARDS, ILLINOIS</b>	<b>EF0</b>	<b>715PM-716PM</b>	<b>65 MPH</b>	<b>0.10 MILE</b>	<b>20 YDS</b>	<b>BRIEF TOUCHDOWN 2 MILES NE OF WEST SALEM.</b>
<b>DAVISS, KENTUCKY</b>	<b>EF0</b>	<b>615PM-616PM</b>	<b>65 MPH</b>	<b>0.20 MILES</b>	<b>20 YDS</b>	<b>2.5 MILES SOUTHWEST OF GATWOOD. SEVERAL TREES DAMAGED.</b>
<b>TRIGG, KENTUCKY</b>	<b>EF0</b>	<b>823PM-824PM</b>	<b>80 MPH</b>	<b>1 MILE</b>	<b>50 YDS</b>	<b>2.5 MILES SOUTHWEST OF LINTON. SEVERAL TREES UPROOTED. CROSSED JUST SOUTH OF PRYOR BAY ON WEST SIDE OF LAKE BARKLEY IN THE LAND BTWN THE LAKES VERY CLOSE TO THE TN STATE LINE.</b>
<b>DAVISS, KENTUCKY</b>	<b>EF1</b>	<b>607PM-610PM</b>	<b>95 MPH</b>	<b>2 MILES</b>	<b>90 YDS</b>	<b>6.5 MILES NORTHEAST OF OWENSBORO. NUMEROUS TREES AND A FEW STRUCTURES DAMAGED.</b>
<b>CALDWELL, KENTUCKY</b>	<b>EF1</b>	<b>716PM-723PM</b>	<b>90 MPH</b>	<b>5.2 MILES</b>	<b>100 YDS</b>	<b>1 MILE EAST OF CRESWELL TO 2.5 NORTH NORTHEAST OF FRYER. NUMEROUS TREES SNAPPED/UPROOTED. MUCH OF DAMAGE PATH WAS IN FOREST INACCESSIBLE BY CAR. ROADS BLOCKED BY FALLEN TREES.</b>
<b>TRIGG KENTUCKY</b>	<b>EF1</b>	<b>756PM-800PM</b>	<b>100 MPH</b>	<b>3 MILES</b>	<b>75 YDS</b>	<b>2.5 MILES NORTH OF CANTON TO 4.2 MILES NORTHEAST OF CANTON. (NEAR THE EAST SHORE OF LAKE BARKLEY) MANY LARGE TREES DOWN. BOATDOCK DAMAGED BY FALLING TREE. PART OF GARAGE DAMAGED BY LARGE LIMB. PART OF ROOF BLOWN OFF HOUSE. 2 CABINS HAD ROOF DAMAGE IN LAKE BARKLEY STATE RESORT PARK. PARK WAS CLOSED NEXT DAY DUE TO TREES/POWER LINES BLOCKING ACCESS.</b>
<b>HOPKINS KENTUCKY</b>	<b>EF1</b>	<b>758PM-800PM</b>	<b>95 MPH</b>	<b>2 MILES</b>	<b>100 YDS</b>	<b>0.5 MILES WEST OF NORTONVILLE TO 1.5 MILES NORTHEAST OF NORTONVILLE. WOODEN ROOFS REMOVED FROM 2 MASONRY BLDGS. ONE TREE FELL ON HOUSE. GAS STATION CANOPY DAMAGED. POWER LINES DOWN DUE TO FALLEN TREES. TOP OF TREES TORN OFF/TREES UPROOTED.</b>

COUNTY ,STATE	RATING	TIME	WIND SPEED	PATH LENGTH	PATH WIDTH	LOCATION/DESCRIPTION:
CALLOWAY, KENTUCKY	EF1	807PM-817PM	95 MPH	7.23 MILES	180 YDS	8 MILES EAST SOUTHEAST OF MURRAY TO 1.5 MILES NORTH OF HAMLIN. 100S OF TREES SNAPPED/UPROOTED. ONE HOME HAD MAJOR ROOF DAMAGE FROM FALLEN TREES. ROADS BLOCKED BY DOWNED TREES.
DAVIESS, KENTUCKY	EF2	610PM-618PM	130 MPH	7.5 MILES	180 YDS	2 MILES EAST NORTHEAST OF THURSTON TO 0.5 MILES EAST NORTHEAST OF GATEWOOD. NUMEROUS TREES AND A FEW STRUCTURES DAMAGED. THE PATH CONTINUED INTO HANCOCK COUNTY (NWS LOUISVILLE AREA). PEAK DAMAGE OCCURRED BTWN SPICE KNOB AND SCYTHIA.
WEBSTER, KENTUCKY	EF2	709PM-725PM	135 MPH	10.19 MILES	300 YDS	1 MILE NORTHEAST OF DIXON TO 1 MILE SOUTHEAST OF SEBREE. 3 RESIDENCES DESTROYED & 10 OTHERS DAMAGED. 4 OF THE DAMAGED HOMES DEEMED UNINHABITABLE. 6 CHICKEN HOUSES DESTROYED. REHAB CENTER HAD 2 MILLION IN DAMAGE. 4 PEOPLE SERIOUSLY INJURED AND 1 MINOR INJURY. NUMEROUS ROADS BLOCKED BY TREES.
CALDWELL, KENTUCKY	EF2	725PM-737PM	110MPH	8.83 MILES	300 YDS	1.2 MILES WEST OF OTTER POND TO 3.6 MILES EAST NORTHEAST OF FRIENDSHIP. NUMEROUS TREES SNAPPED/UPROOTED. AT LEAST HALF DOZEN SMALL BARNs DESTROYED. SEVERAL ROOFS LIFTED AND TORN OFF HOUSES. MAJOR STRUCTURAL DAMAGE TO 7 HOMES INCLUDING BROKEN WINDOWS.
MCLEAN, KENTUCKY	EF2	732PM-744PM	120MPH	6.62 MILES	360 YDS	4.2 WEST OF BEECH GROVE TO 0.6 MILES NORTH NORTHEAST OF ELBA. 12-15 FARM BLDGS DAMAGED. 6-8 BARNs DESTROYED. 1 HOME HAD SERIOUS DAMAGE. 3-4 OTHER HOMES HAD MINOR DAMAGE. NUMEROUS TREES AND POWER LINES DOWN. THIS TORNADO CONTINUED INTO DAVIESS COUNTY.

COUNTY ,STATE	RATING	TIME	WIND SPEED	PATH LENGTH	PATH WIDTH	LOCATION/DESCRIPTION:
CHRISTIAN, KENTUCKY	EF2	740PM-742PM	115 MPH	1.4 MILES	300 YDS	3.6 NORTHWEST OF MACEDONIA TO 3.6 NORTH NORTHWEST OF MACEDONIA. A LARGE AREA OF TREES WERE SNAPPED/UPROOTED IN PENNYRILE STATE FOREST. SOME OF THESE TREES WERE 50-60 FT TALL WITH A CLEAR PATH SEEN. MOBILE HOME BLOWN DOWN AND HILL AND DESTROYED WITH PERSON INSIDE INJURED. 2 OTHER MOBILE HOMES SEVERELY DAMAGED. BARN DESTROYED.
DAVIESS, KENTUCKY	EF2	744PM-805PM	120 MPH	10.64 MILES	360 YDS	3 MILES SOUTHWEST OF ST. JOSEPH TO 5 MILES SOUTHWEST OF OWENSBORO. THE TORNADO CROSSED INTO DAVIESS COUNTY FROM MCLEAN COUNTY. NUMEROUS STRUCTURES DAMAGED/DESTROYED – MOSTLY BARNS/OUTBLDGS. SEVERAL RESIDENCES DESTROYED AND ABOUT TWO DOZEN OTHER WERE DAMAGED. 4 PEOPLE INJURED IN WEST LOUISVILLE WHEN THEIR MOBILE HOME WAS DESTROYED.
HOPKINS, KENTUCKY	EF2	848PM-851PM	120 MPH	1.86 MILES	300 YDS	4.3 SOUTHWEST OF ST. CHARLES TO 3.1 SOUTH SOUTHWEST OF ST. CHARLES. NUMEROUS TREES SNAPPED/UPROOTED. 3 MOBILE HOMES DESTROYED WITH DEBRIS THROWN SEVERAL HUNDRED YDS. 1 MINOR INJURY. NUMEROUS TREES ACROSS ROADS. BARNS AND ONE HOUSE WERE DAMAGED.
TRIGG, KENTUCKY	EF2	832PM-845PM	120 MPH	9.28 MILES	200YDS	3.6 NORTHEAST OF LINTON TO 9 MILES SOUTHEAST OF CADIZ. NUMEROUS TREES UPROOTED OR BLOWN DOWN. METAL DEBRIS EMBEDDED IN TREES. 2 BARNS DESTROYED. 1 LARGE GARAGE DESTROYED WITH DEBRIS BLOWN UP TO ¾ OF A MILE AND PROJECTILES EMBEDDED IN GROUND UP TO 200 YDS AWAY. 4 POWER POLES SNAPPED.

COUNTY ,STATE	RATING	TIME	WIND SPEED	PATH LENGTH	PATH WIDTH	LOCATION
DAVIESS, KENTUCKY	EF3	809PM-820PM	155 MPH	6.99 MILES	360 YDS	2.5 MILES WEST OF OWENSBORO TO 5 MILES NORTHEAST OF OWENSBORO.

**DESCRIPTION:**

About a dozen homes were destroyed, and close to 150 others were damaged. An additional 20 public or commercial buildings were destroyed or condemned. Damage to commercial and public buildings, including churches and schools, was estimated near 10.5 million dollars. Residential structures sustained about 1 million dollars in damage. Two historic churches suffered severe damage. The steeple of one church collapsed into the Sanctuary. About 125 people were in the church at the time of the collapse, including 25 where the steeple fell into the sanctuary. They all moved to the basement 5 or 10 minutes before the storm hit, sparing anyone from death or serious injury. On the west side of Owensboro, a man was trapped in his overturned mobile home. He received only minor injuries. A motel was heavily damaged with nearly the entire roof blown off. Several guests at the motel were treated for injuries, mostly abrasions from falling debris. Almost every building at Brescia University was damaged, mostly to the roofs. Windows were blown out of the science building. Elsewhere, a delivery truck was overturned. Piles of debris from collapsed garages, warehouses, and roofs lined downtown streets during the cleanup. Tobacco warehouses downtown were destroyed or heavily damaged. The most serious damage was in a 12 to 15 square block area in and near downtown. Nearly all city streets were reopened and nearly all power was restored within a few days after the tornado. The damage path began just northeast of the Owensboro-Daviess County Airport, then curved Northeast through the riverfront area of downtown Owensboro.

**...PHOTOS...**

**OWENSBORO:**

Photo of damage to an Owensboro motel...



Photo of a church steeple that fell through the roof...



Damage to a house roof...



Damage to a porch of a residence...



A partially reinforced block wall was blown over...



An older building with a garage wall that was blown out...



Significant damage to a Baptist church...



Major damage inside the church...





A slate shingle was embedded into the side of a church...



A house lost its porch and roof...



The steeple of another church collapsed downward...



**NORTONVILLE (Hopkins County):**

Shingle damage to a church...



The roof was blown off a mini-mart with damage to a canopy...



## TRIGG COUNTY...

A tree took out part of a garage...



Trees downed at Lake Barkley State Resort Park...



Roof damage to a porch and shed in Blue Springs...



Damage to house roof and siding in Blue Springs...



Shed/barn damage and tin in tree...



Garage and tobacco barns were destroyed...

