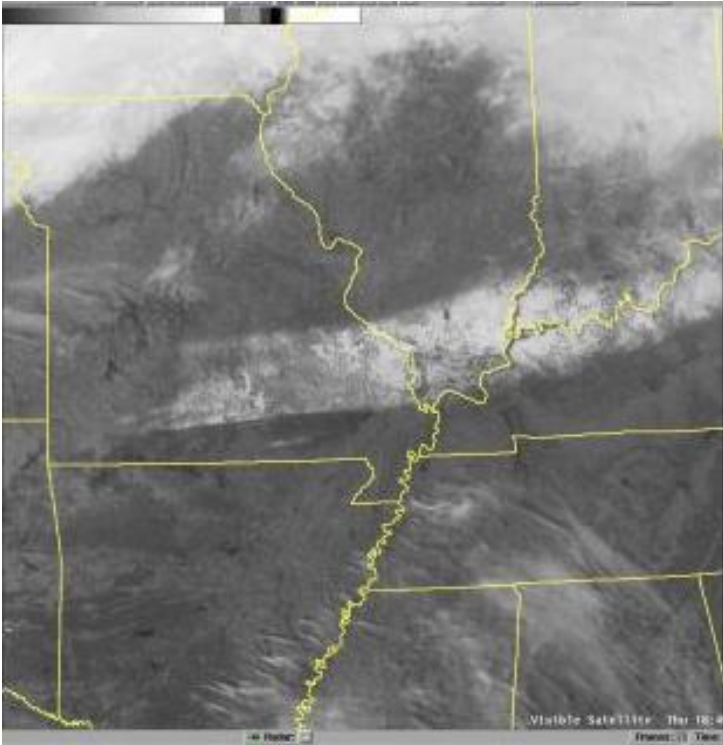
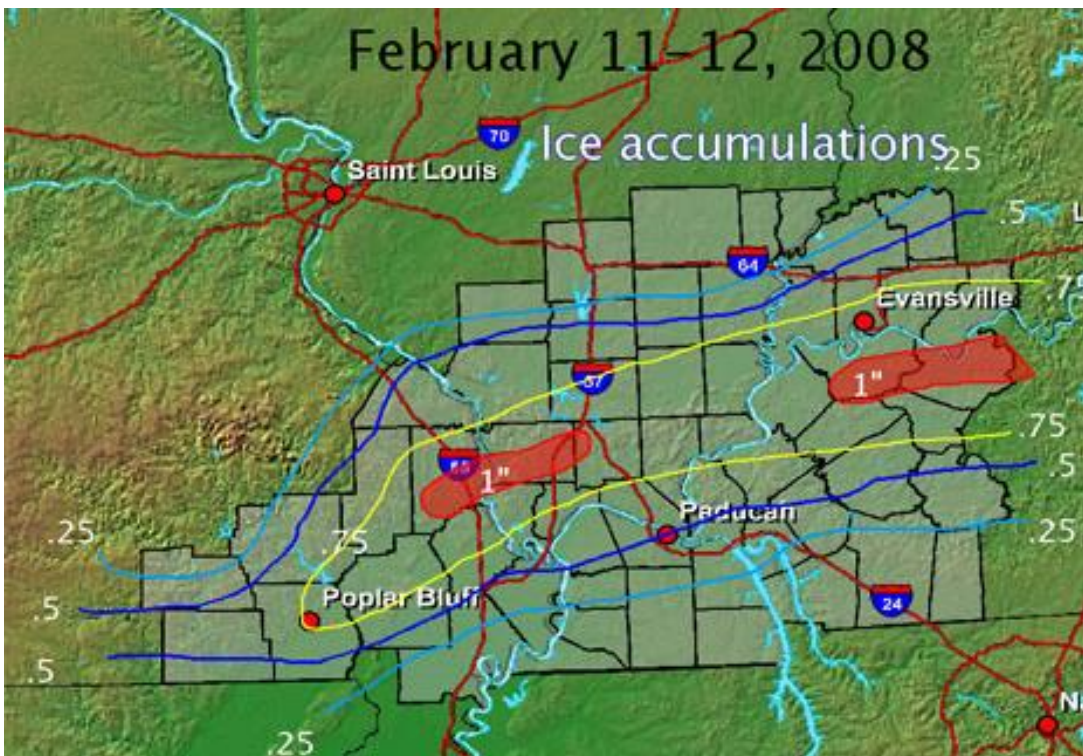


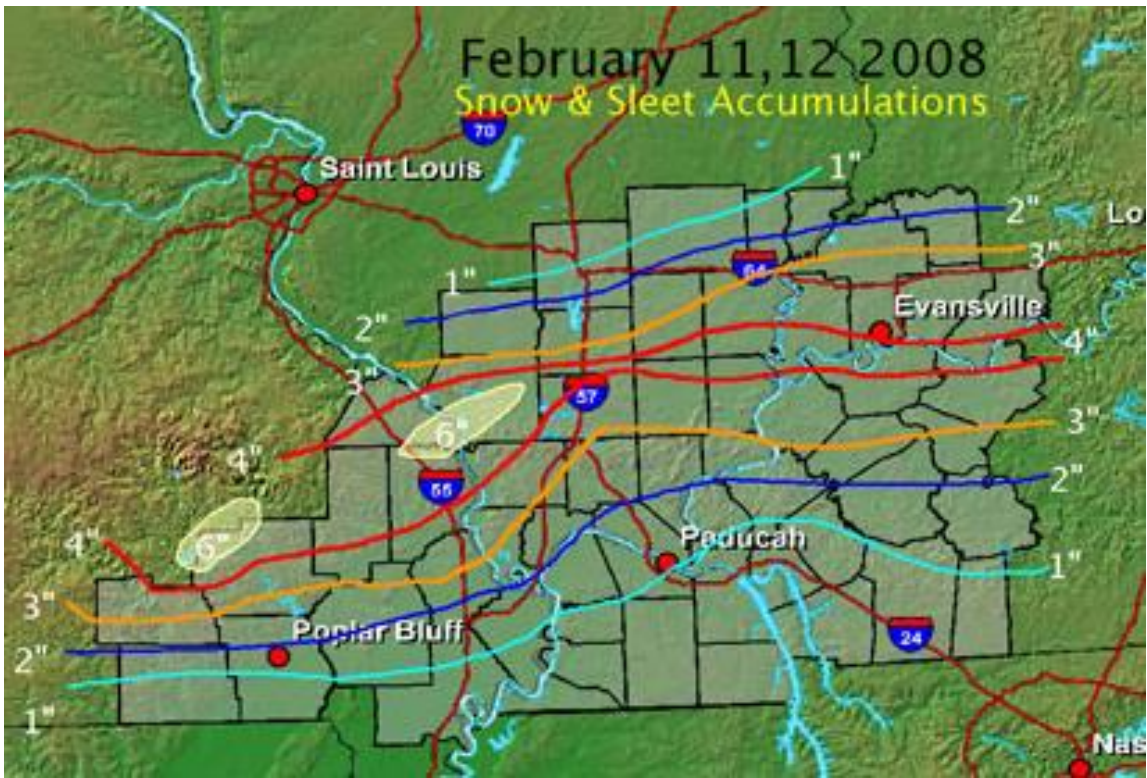
MAJOR ICE STORM ON FEBRUARY 14, 2008

Recovery efforts continued on Thursday, Feb. 14 as warmer temperatures helped to start melting the ice and snow. The satellite image below was taken Thursday afternoon. The swath of ice and snow is clearly visible across southeast Missouri, southern Illinois, and along the Kentucky/Indiana border.



Power was still being restored, and roads were still being cleared of downed trees Thursday, Feb. 14 in areas with the heaviest ice accumulations. See the image below for snow, sleet, and ice accumulations.





First two photos taken 4 miles south of Marble Hill, MO early on Feb. 12 (courtesy of Jack Watt)





Pictures of damage in Livingston county....courtesy of Chris Ellis







