

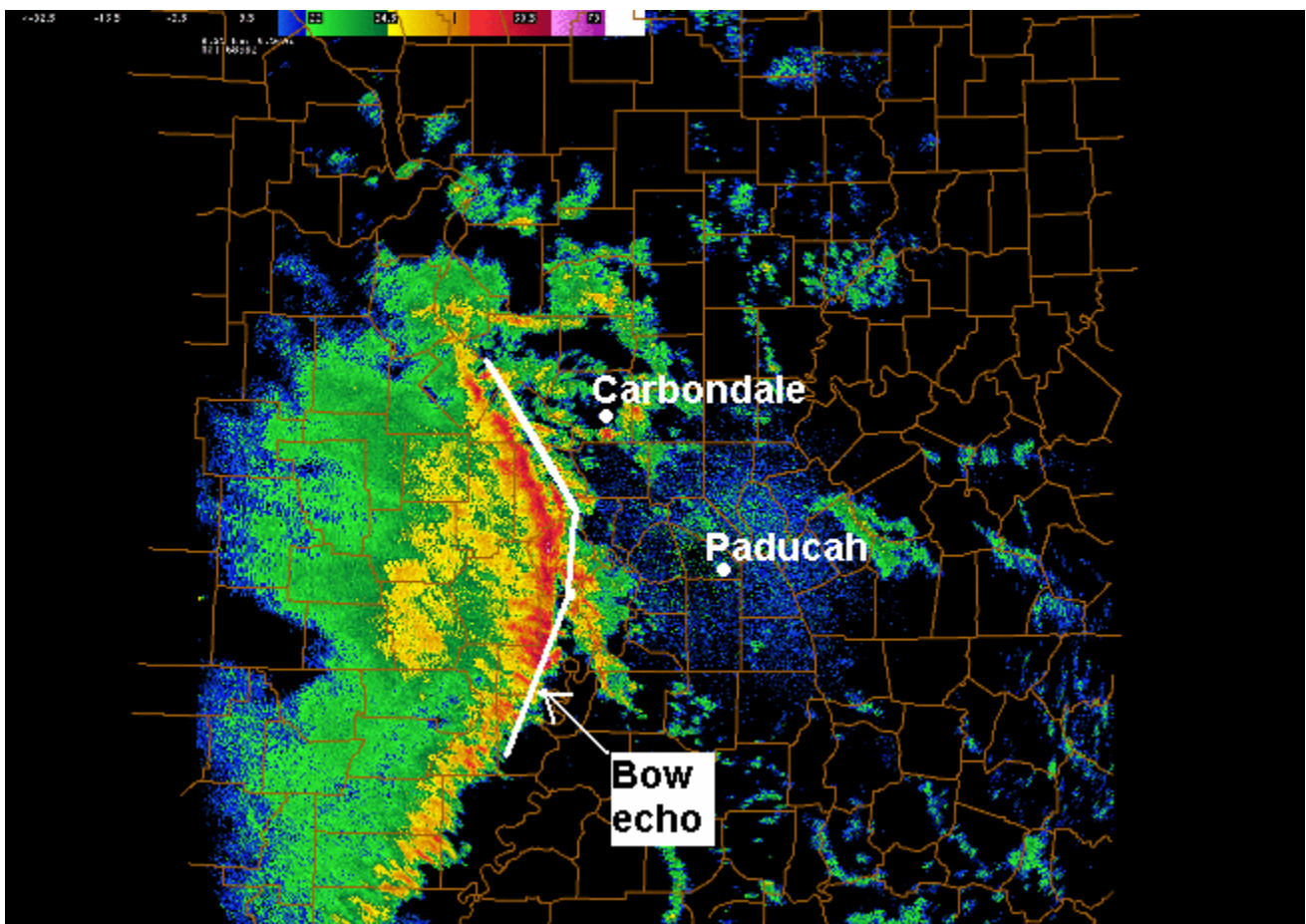
Bow Echo April 9-10, 2009

Late in the evening of April 9, a line of thunderstorms organized over the Ozarks of south central Missouri. This line of storms began to bow eastward as it accelerated across southeast Missouri, reaching speeds of 45 to 50 mph. The line crossed all of western Kentucky and southern Illinois by around 3 A.M. on April 10. This "bow echo" produced widespread damaging wind gusts around 60 mph across southeast Missouri and extreme western Kentucky. Winds decreased somewhat as the line moved east of Paducah.

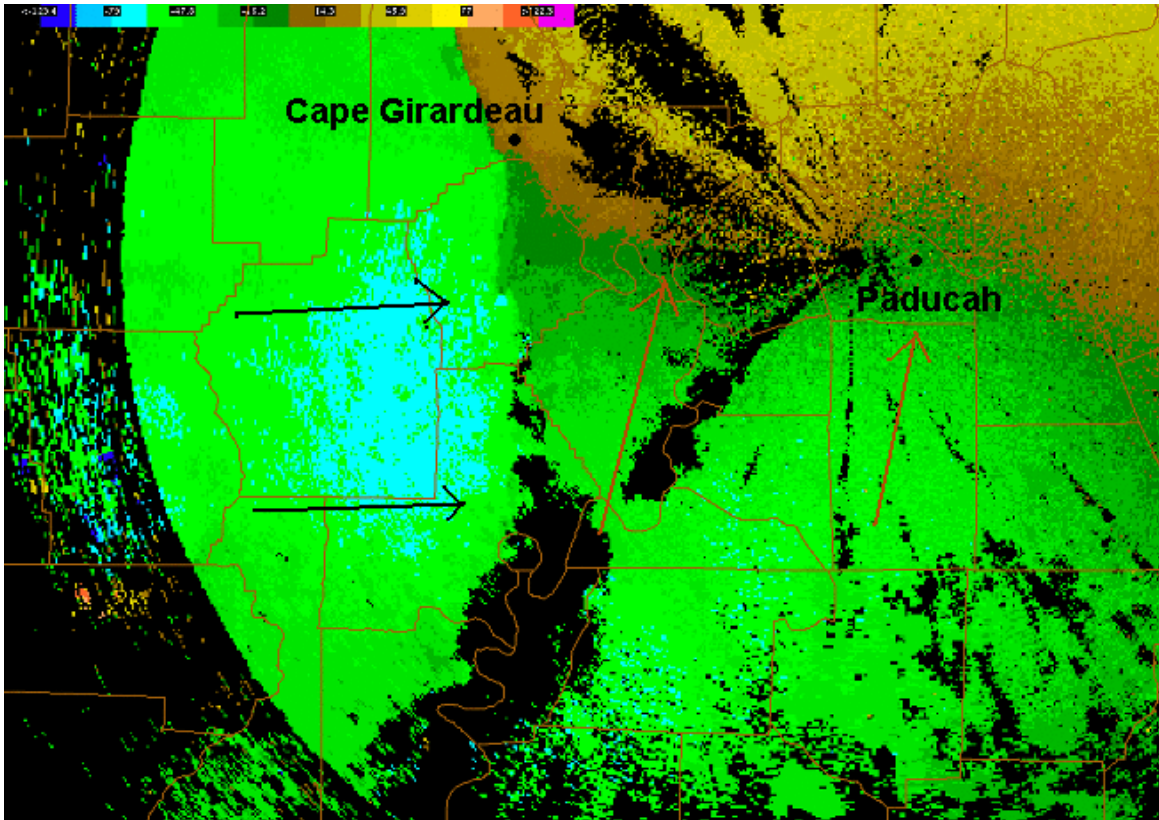
Some of the more significant damage included a destroyed car wash and gas pump canopy in Charleston, MO. A church roof was blown off several miles west of Paducah, KY. Numerous sheds and outbuildings were blown over or destroyed from Paducah westward to Ballard County. Peak wind gusts were measured at 58 mph at Poplar Bluff, MO and 60 mph at the National Weather Service near Paducah. There were numerous reports of hail to the size of pennies. The hail covered the ground in some spots.

Paducah Radar Images

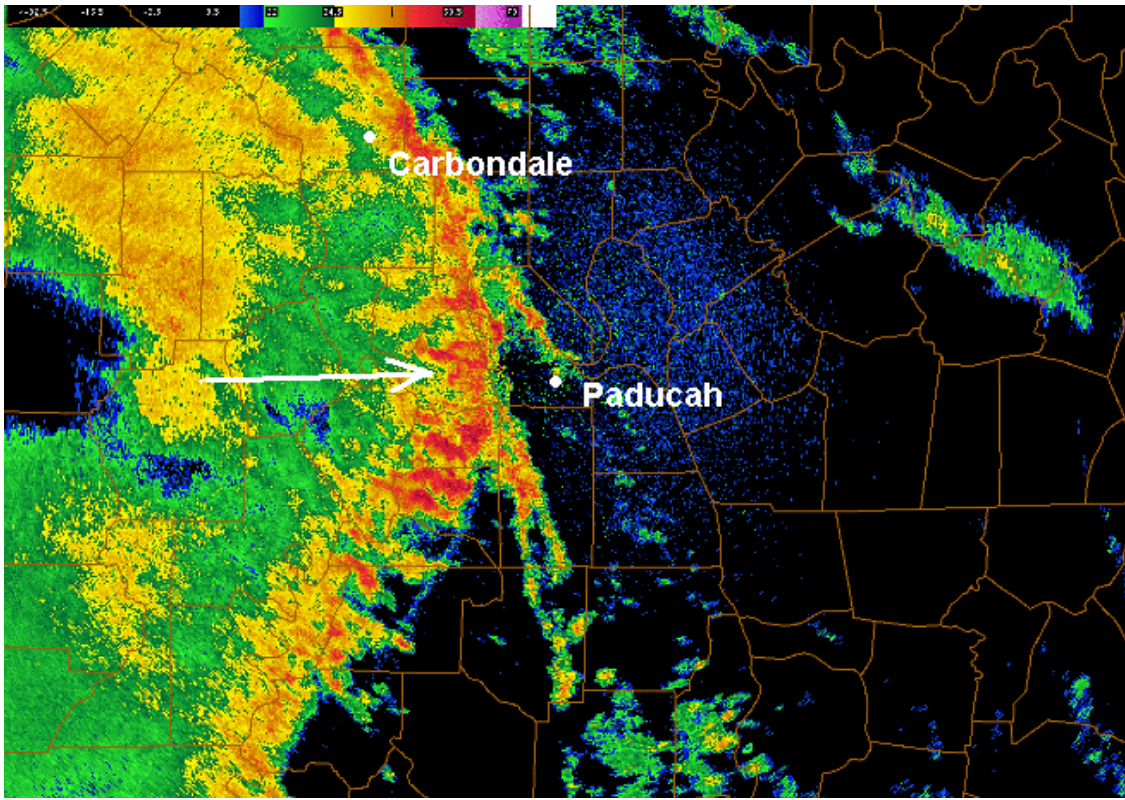
12:18 A.M.: Bow echo approaching Mississippi River



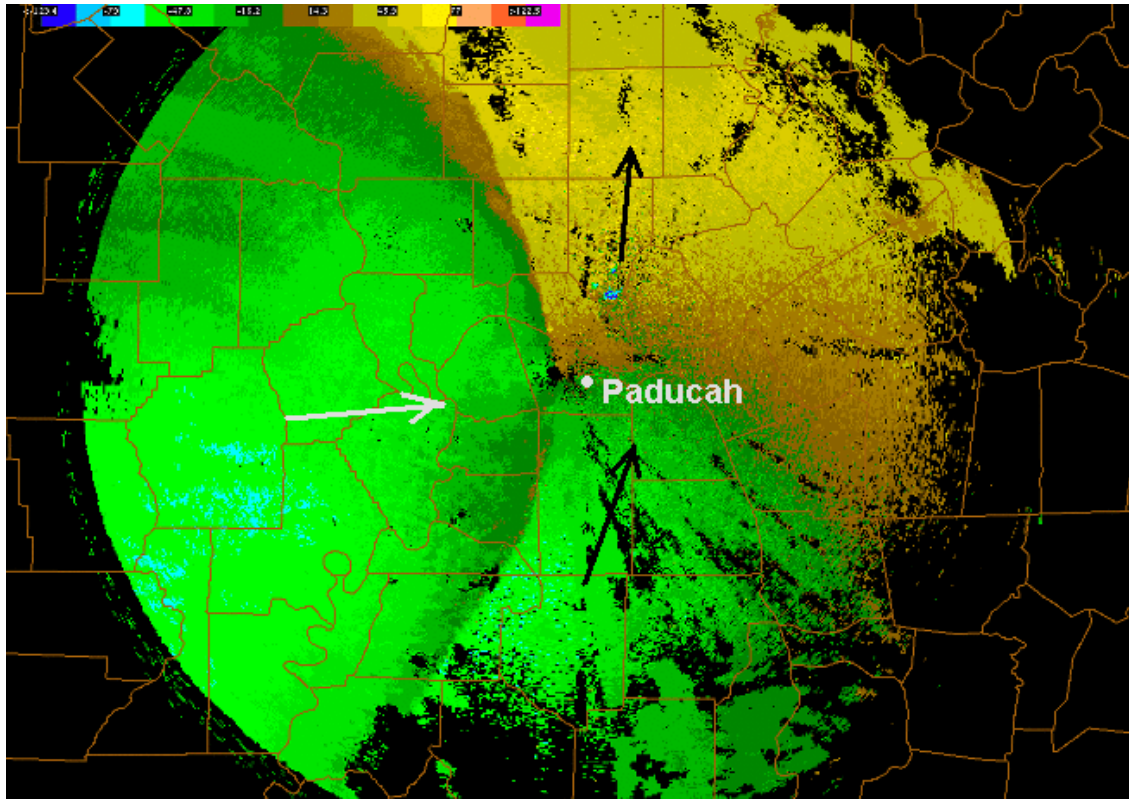
12:23 A.M.: Radar velocity image



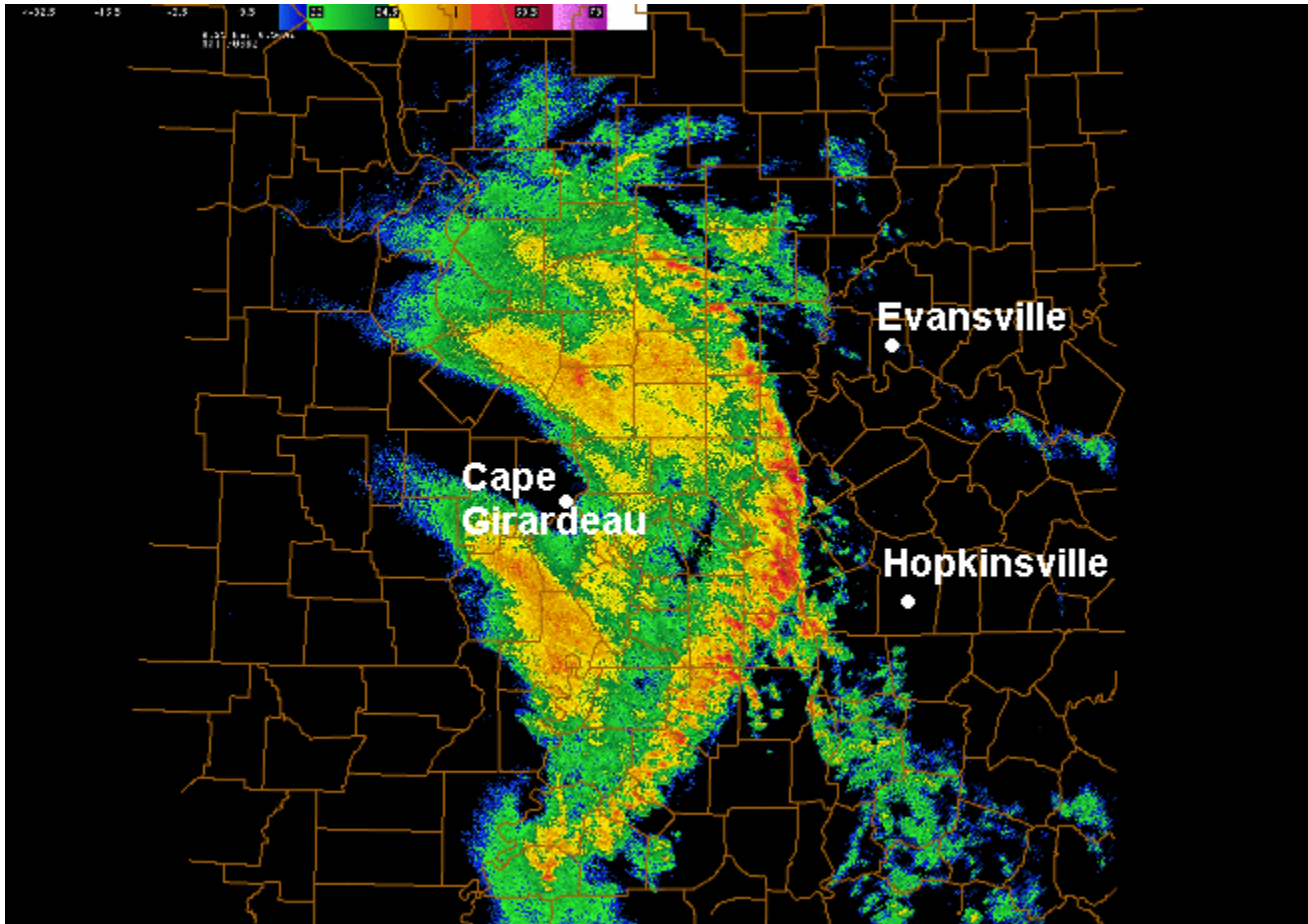
1:02 A.M.: Bow echo approaching Paducah



1:06 A.M.: Radar velocity image



1:48 A.M.: Bow echo crossing the Lakes region of Western KY



Preliminary Storm Reports

PRELIMINARY LOCAL STORM REPORT...SUMMARY
 NATIONAL WEATHER SERVICE PADUCAH KY
 419 AM CDT FRI APR 10 2009

..TIME...	...EVENT...	...CITY LOCATION...	...LAT.LON...
..DATE...MAG....	..COUNTY LOCATION..ST..	...SOURCE....
	..REMARKS..		

1111 PM	TSTM WND GST	DONIPHAN	36.62N 90.82W
04/09/2009	M60.00 MPH	RIPLEY	MO EMERGENCY MNGR

SEVERAL GUSTS MEASURED IN THE UPPER 50S

1120 PM	HAIL	NEELYVILLE	36.56N 90.51W
04/09/2009	E0.75 INCH	BUTLER	MO TRAINED SPOTTER

HAIL SPOTTED ON THE BUTLER/ RIPLEY COUNTY LINE NEAR THE ARKANSAS BORDER.

1120 PM	HAIL	5 S DONIPHAN	36.55N 90.82W
04/09/2009	E0.75 INCH	RIPLEY	MO EMERGENCY MNGR

DIME SIZE HAIL COVERING THE GROUND.

1125 PM	TSTM WND DMG	3 SW NEELYVILLE	36.53N 90.55W
---------	--------------	-----------------	---------------

04/09/2009 BUTLER MO TRAINED SPOTTER
 AWNING TORN OFF THE FRONT OF A HOUSE WITH SHINGLE DAMAGE TO A SHED.

1141 PM TSTM WND GST POPLAR BLUFF 36.76N 90.41W
 04/09/2009 M58.00 MPH BUTLER MO ASOS
 SUSTAINED AT 40 MPH.

1228 AM HAIL CAPE GIRARDEAU 37.31N 89.55W
 04/10/2009 E0.75 INCH CAPE GIRARDEAU MO EMERGENCY MNGR
 HAIL IS REPORTED AS HEAVY BUT DIME SIZED.

1228 AM TSTM WND GST CAPE GIRARDEAU 37.31N 89.55W
 04/10/2009 E60.00 MPH CAPE GIRARDEAU MO EMERGENCY MNGR
 WINDS ESTIMATED 50 TO 60 MPH WITH HIGHER GUSTS.

1235 AM TSTM WND DMG CHARLESTON 36.92N 89.34W
 04/10/2009 MISSISSIPPI MO EMERGENCY MNGR
 CAR WASH DESTROYED, GAS STATION CANOPY BLOWN DOWN.

0100 AM TSTM WND DMG 2 E KEVIL 37.08N 88.85W
 04/10/2009 MCCRACKEN KY TRAINED SPOTTER
 REPORTS OF 2 SHEDS DESTROYED AT RUDYS FARM CENTER NEAR BETHEL CHURCH ROAD.

0100 AM TSTM WND DMG 2 E KEVIL 37.08N 88.85W
 04/10/2009 MCCRACKEN KY TRAINED SPOTTER
 POWER POLE SNAPPED

0100 AM TSTM WND DMG 2 E KEVIL 37.08N 88.85W
 04/10/2009 MCCRACKEN KY TRAINED SPOTTER
 2 SHEDS DESTROYED NEAR RUDYS FARM CENTER NEAR BETHEL CHURCH ROAD.

0102 AM TSTM WND DMG WOODVILLE 37.10N 88.87W
 04/10/2009 MCCRACKEN KY TRAINED SPOTTER
 SPRING BAYOU BAPTIST CHURCH ROOF BLOWN OFF. TIME OF OCCURANCE ESTIMATED BY RADAR.

0111 AM TSTM WND GST PADUCAH 37.07N 88.64W
 04/10/2009 M60.00 MPH MCCRACKEN KY ASOS

0118 AM TSTM WND DMG PADUCAH 37.07N 88.64W
 04/10/2009 MCCRACKEN KY TRAINED SPOTTER
 SHEDS IN LOWES PARKING LOT BLOWN ACROSS NEW HOLT ROAD.

0131 AM TSTM WND GST REIDLAND 37.01N 88.53W
 04/10/2009 M56.00 MPH MCCRACKEN KY TRAINED SPOTTER

0250 AM HAIL HOPKINSVILLE 36.85N 87.49W
 04/10/2009 M0.75 INCH CHRISTIAN KY TRAINED SPOTTER
 PENNY SIZE HAIL REPORTED.