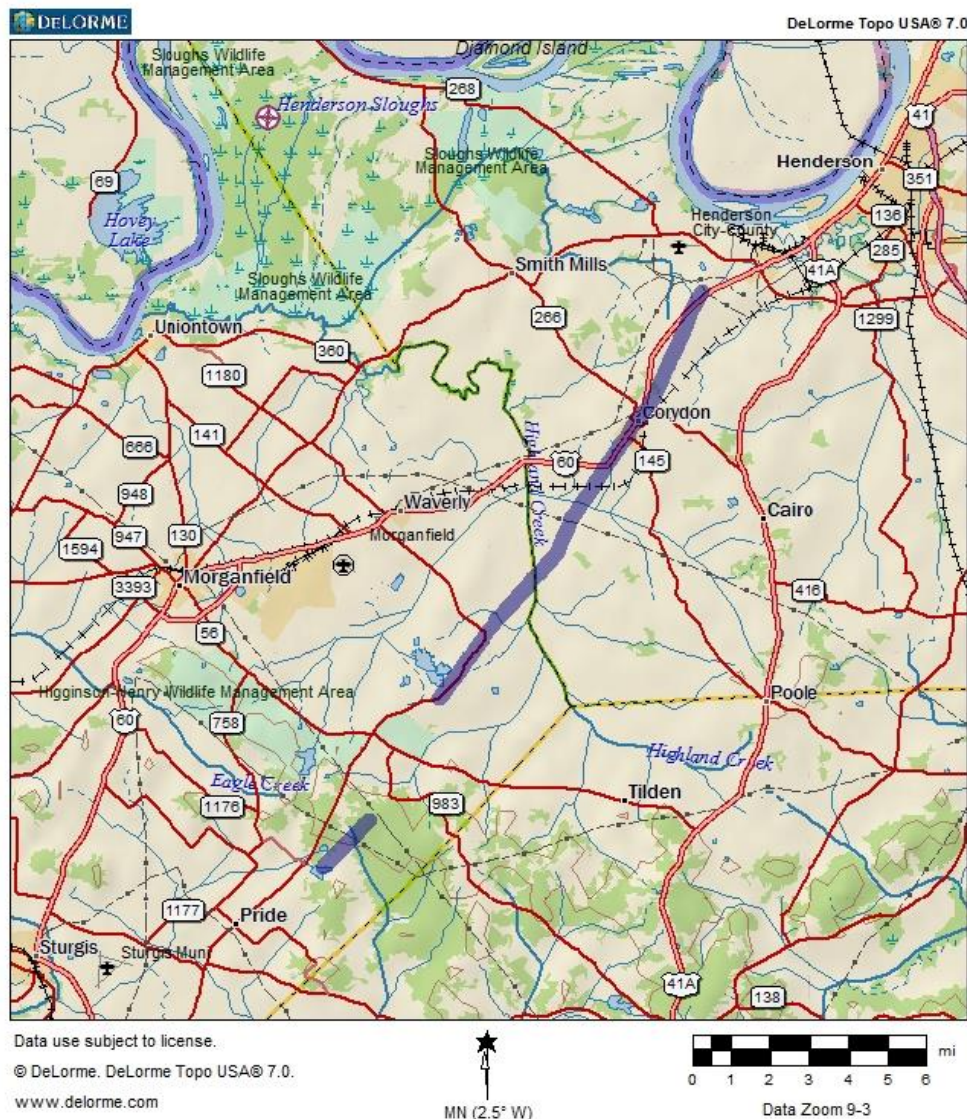


Severe Weather Event – March 28, 2009

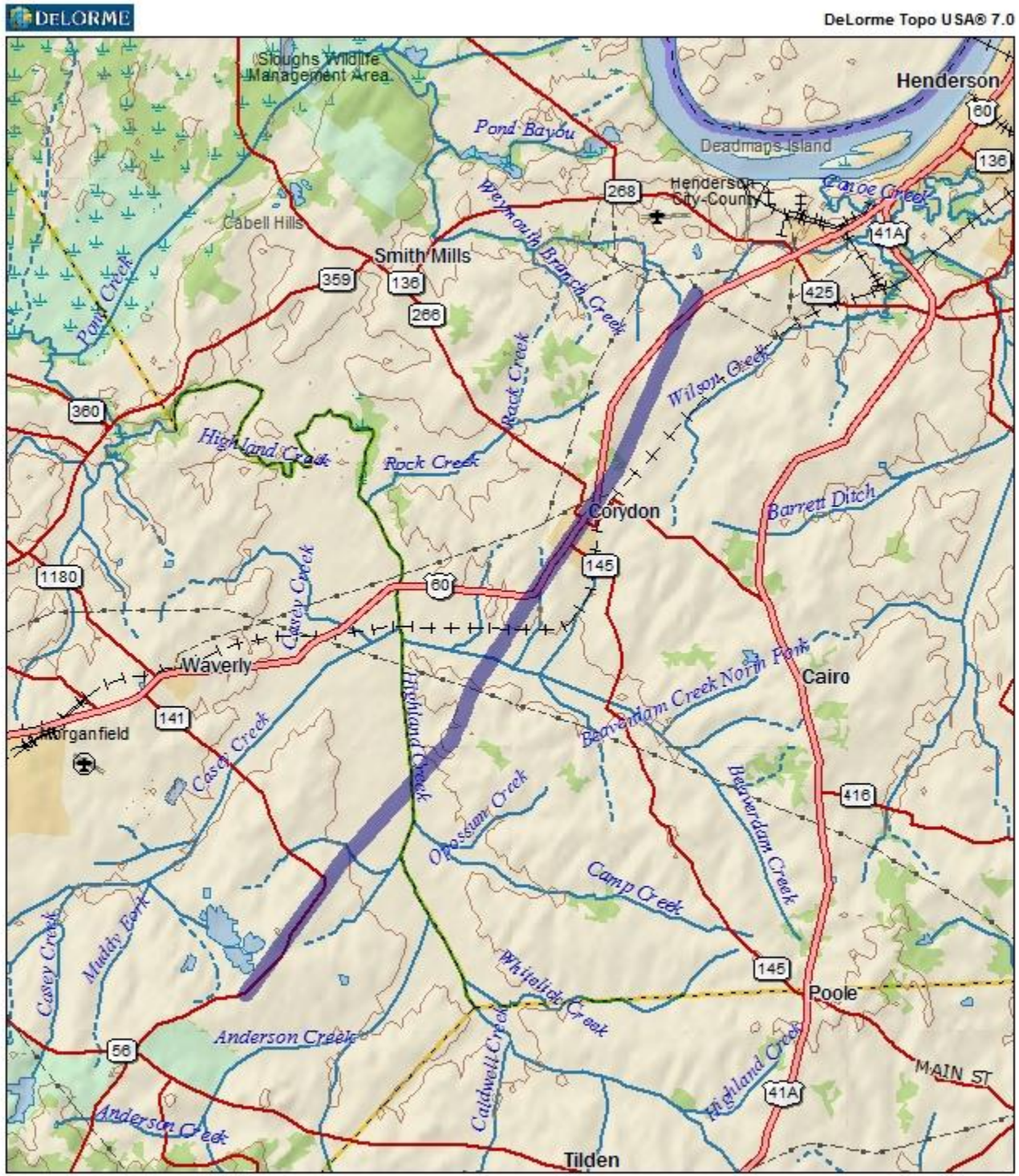
Preliminary damage surveys indicate that the supercell that tracked northeast across Crittenden, Union, and Henderson Counties in western Kentucky on Saturday, March 28 produced two tornadoes. Tornado paths, radar imagery, a regional summary, damage photos, and preliminary storm damage survey and reports are included below.

An organized outbreak of severe thunderstorms affected much of western Kentucky and southwest Indiana on the afternoon of Saturday, March 28. A line of storms developed along a cold front as it entered southeast Illinois and the Kentucky Lake region of western Kentucky. The line of storms gradually intensified as it moved east across [Tornado Watch 91](#). Numerous reports of large hail were received over the Pennyriple region of western Kentucky. Isolated reports of wind damage were received.

The first tornado in Union County was given a rating of EF-1. A second more intense tornado formed in eastern Union County and tracked across western Henderson County. This tornado was rated EF-3. The EF scale (Enhanced Fujita scale) is [described here](#). Baseball-size hail was associated with the supercell. Near Pride in Union County, siding was shredded and windshields were broken.



EF-3 Tornado Path Map through Corydon



Data use subject to license.
© DeLorme. DeLorme Topo USA® 7.0.
www.delorme.com



Data Zoom 10-0

PUBLIC INFORMATION STATEMENT
NATIONAL WEATHER SERVICE PADUCAH KY
448 PM CDT SUN MAR 29 2009

...DAMAGE SURVEY RESULTS FOR AN EF1 TORNADO THAT OCCURRED IN UNION COUNTY KENTUCKY...

THE FOLLOWING IS A PRELIMINARY DAMAGE ASSESSMENT FOR THE UNION COUNTY KENTUCKY TORNADO THAT OCCURRED NEAR THE COMMUNITY OF MORGANFIELD.

- * EVENT DATE - SATURDAY MARCH 28 2009
- * EVENT TIME - 423 PM CDT /RADAR ADJUSTED/
- * EVENT TYPE - **EF1 TORNADO**
- * EVENT LOCATION - BEGAN 9 MILES SOUTHEAST OF MORGANFIELD NEAR MOFFET LAKE AND TRACKED NORTHEAST TO 7 MILES SOUTHEAST OF MORGANFIELD...OR 2 MILES SOUTH OF BOXVILLE JUST NORTH OF PERSIMMON RIDGE ROAD.
- * PEAK WIND - 90 MPH
- * AVERAGE PATH WIDTH - 75 YARDS
- * PATH LENGTH - 2.5 MILES
- * INJURIES - NONE
- * FATALITIES - NONE
- * DISCUSSION/DAMAGE - TWO CAMPER TRAILERS OVERTURNED. FARM SHED LOST ROOF. SEVERAL TREES DOWN.

\$\$

SHANKLIN/HOOPER

PUBLIC INFORMATION STATEMENT
NATIONAL WEATHER SERVICE PADUCAH KY
444 PM CDT SUN MAR 29 2009

...DAMAGE SURVEY RESULTS FOR THE EF3 TORNADO THAT STRUCK THE COMMUNITY OF CORYDON IN HENDERSON COUNTY KENTUCKY...

THE FOLLOWING IS A PRELIMINARY DAMAGE ASSESSMENT FOR THIS EVENT.

- * EVENT DATE - SATURDAY MARCH 28 2009
- * EVENT TIME - 443 PM CDT
- * EVENT TYPE - **EF3 TORNADO**
- * EVENT LOCATION - BEGAN 5 MILES SOUTH SOUTHEAST OF WAVERLY ALONG HWY 141 AND TRACKED NORTHEAST...THROUGH CORYDON AT APPROXIMATELY 448 PM...AND ENDED 6 MILES SOUTHWEST OF HENDERSON JUST NORTH OF JARBOE LANE.
- * PEAK WIND - 140 MPH
- * AVERAGE PATH WIDTH - 300 YARDS (MAX WIDTH 400 YARDS)
- * PATH LENGTH - 12 MILES
- * INJURIES - 2
- * FATALITIES - NONE
- * DISCUSSION/DAMAGE - INFORMATION PROVIDED BY THE HENDERSON COUNTY EMERGENCY MANAGER...6 HOMES DESTROYED...10 HOMES WITH MAJOR DAMAGE...60 HOMES AND BUILDINGS WITH MINOR DAMAGE. SOME VEHICLES OVERTURNED AND ONE TRUCK PICKED UP AND THROWN ONE QUARTER MILE.

\$\$

SHANKLIN/HOOPER

National Weather Service Damage Survey Team Photos

Photo of a Ford Ranger pickup truck that was blown one-quarter mile and found underneath tree debris. This photo was taken just inside the Henderson County line, less than a mile from the Union County line.



Photo of actual tornado: The tornado was nearly rain-wrapped, making visual identification of the vortex difficult from almost any angle. An emergency management official from Hopkins County took the following photo from just south of the Henderson County Airport. According to the photographer, there was debris in the air in the vicinity of the circled cloud feature. Being familiar with the area, he estimated the debris and cloud feature were in the Corydon area. Due to the distance involved and the proximity of rain shafts, neither the debris nor the exact location of the funnel are identifiable with certainty in the photo. The photo was taken about the same time as the still radar image. Photo and information courtesy of Jim Needs.











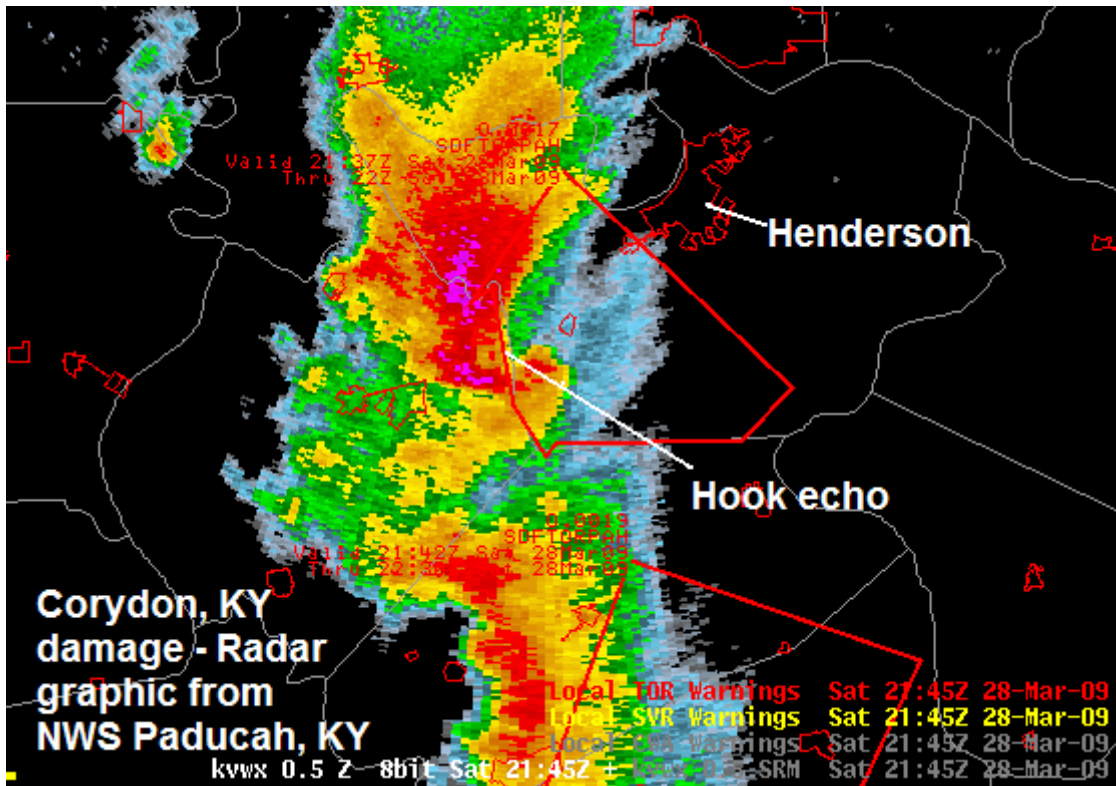




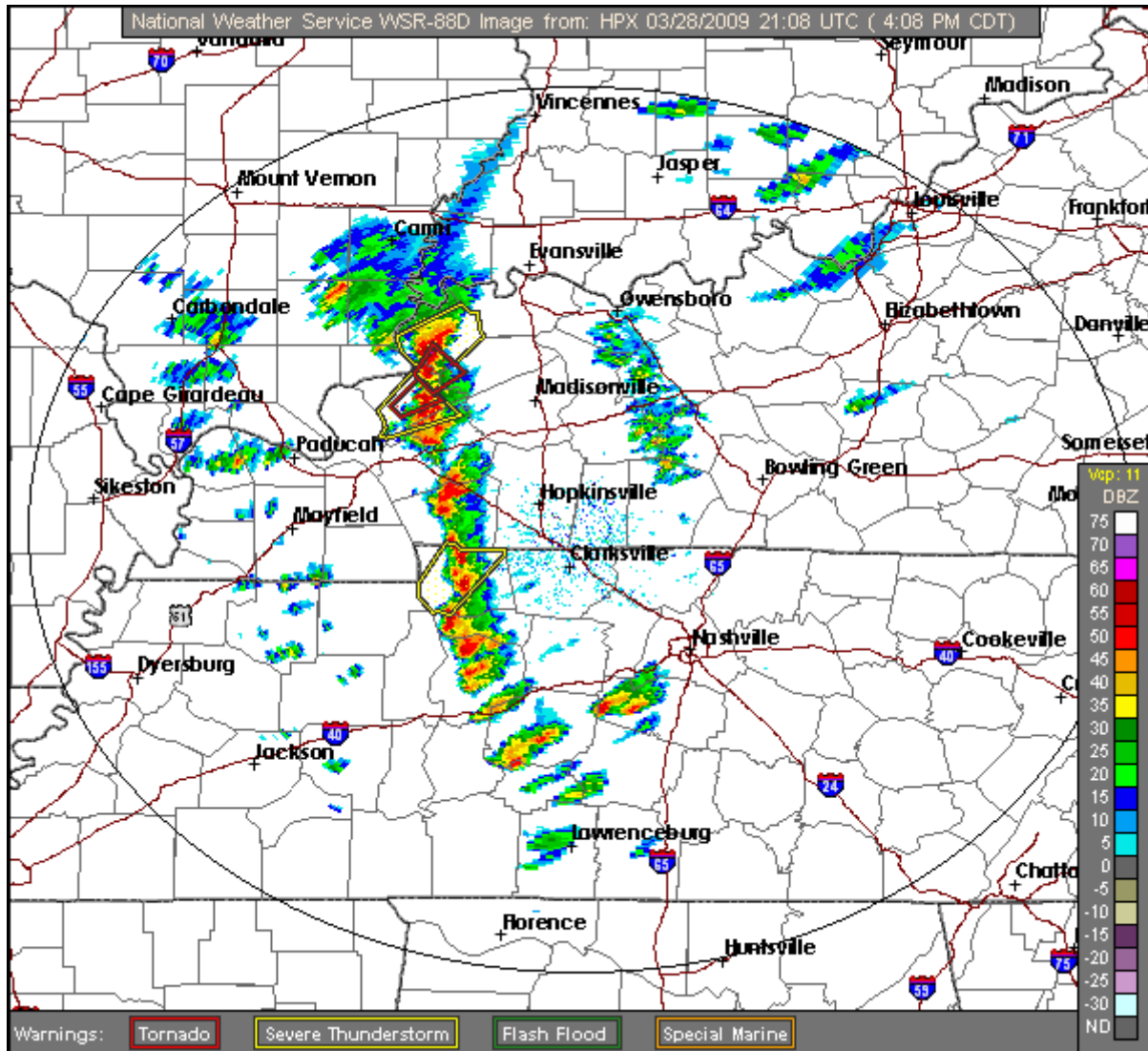


Radar Images

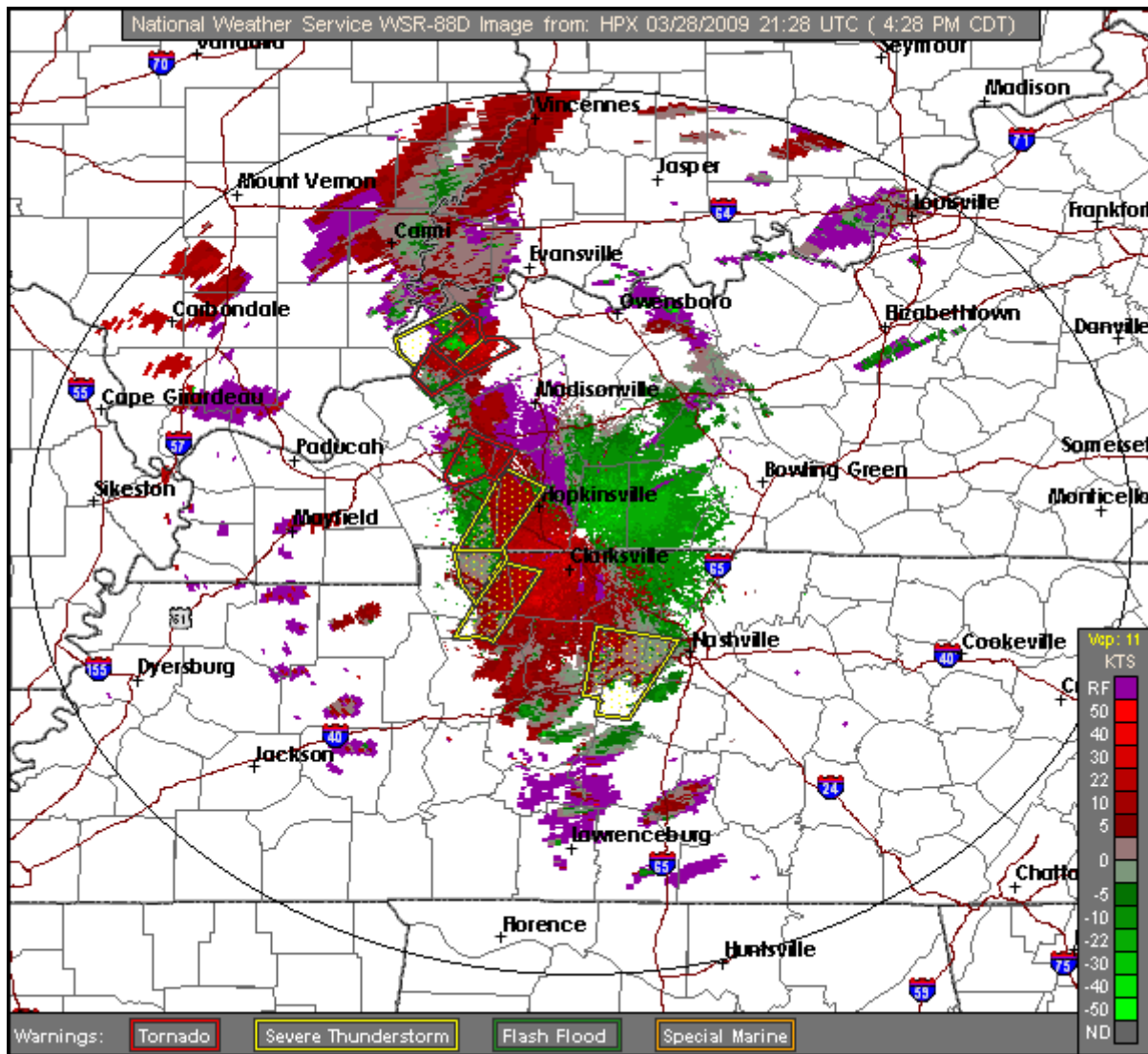
Below is a graphic showing the hook-shaped supercell as it crossed the Union/Henderson County line. The associated tornado was rated EF-3 at about this time. The radar image is from the Evansville radar at 4:45 P.M. The large red polygon ahead of the supercell is a Tornado Warning issued by the National Weather Service. Other smaller red shapes are the outlines of urban areas such as Henderson.



One-hour loop of radar imagery from the Hopkinsville radar between 4 and 5 P.M. The line of storms was located in close proximity to an eastward-moving cold front.



One-hour radar loop of velocity imagery from the Hopkinsville radar between 4:30 and 5 P.M. Even at this large scale, the red/green velocity couplet indicative of strong rotation is clearly evident southwest of Evansville.



The following is a preliminary listing of hail, wind, and damage reports received by the NWS at Paducah through early Saturday evening.

PRELIMINARY LOCAL STORM REPORT...SUMMARY
 NATIONAL WEATHER SERVICE PADUCAH KY
 630 PM CDT SAT MAR 28 2009

..TIME...	...EVENT...	...CITY LOCATION...	...LAT.LON...
..DATE...	...MAG....	..COUNTY LOCATION..ST..	...SOURCE....
..REMARKS..			
0358 PM	HAIL	5 S STURGIS	37.47N 87.99W
03/28/2009	E0.75 INCH	CRITTENDEN KY	TRAINED SPOTTER
		DIME-SIZED HAIL 5 MILES SOUTH OF STURGIS.	
0413 PM	HAIL	5 NW STURGIS	37.60N 88.05W

03/28/2009 M1.00 INCH UNION KY TRAINED SPOTTER

0427 PM HAIL MORGANFIELD 37.68N 87.91W
03/28/2009 E1.00 INCH UNION KY TRAINED SPOTTER

WALL CLOUD 10 MILES WEST NEAR STURGIS. CANNOT VERIFY ANY ROTATION.

0430 PM HAIL MORGANFIELD 37.68N 87.91W
03/28/2009 M0.75 INCH UNION KY LAW ENFORCEMENT

DIME SIZE HAIL HAS FALLEN FOR THE PAST 15 MINUTES.

0439 PM HAIL LAFAYETTE 36.66N 87.66W
03/28/2009 M1.00 INCH CHRISTIAN KY EMERGENCY MNGR

QUARTER SIZE HAIL REPORTED.

0440 PM TSTM WND DMG CORYDON 37.79N 87.71W
03/28/2009 HENDERSON KY DEPT OF HIGHWAYS

DAMAGE REPORTED FROM ONE END OF TOWN TO THE OTHER ALONG HIGHWAY 60. ADDITIONAL DAMAGE REPORTED NEAR HOUSE BRIDGE ROAD. DOT RESPONDING.

0440 PM HAIL DAWSON SPRINGS 37.17N 87.69W
03/28/2009 M0.88 INCH HOPKINS KY LAW ENFORCEMENT

NICKLE SIZE HAIL REPORTED ALONG HIGHWAY 109.

0443 PM HAIL HERNDON 36.71N 87.60W
03/28/2009 M1.00 INCH CHRISTIAN KY TRAINED SPOTTER

0450 PM HAIL HOPKINSVILLE 36.85N 87.49W
03/28/2009 M1.00 INCH CHRISTIAN KY EMERGENCY MNGR

QUARTER SIZE HAIL REPORTED ALONG INTERSTATE 24 AT ASHBERRY CIRCLE.

0455 PM TSTM WND DMG HOPKINSVILLE 36.85N 87.49W
03/28/2009 CHRISTIAN KY CO-OP OBSERVER

DOWNED TREE ON SOUTH END OF TOWN. WIND GUSTS ESTIMATED AT 59 MPH.

0457 PM HAIL HOPKINSVILLE 36.85N 87.49W
03/28/2009 M1.00 INCH CHRISTIAN KY LAW ENFORCEMENT

QUARTER SIZE HAIL REPORTED ALONG HIGHWAY 41 BY STATE POLICE.

0500 PM TSTM WND DMG 5 E OAK GROVE 36.67N 87.34W
03/28/2009 TODD KY EMERGENCY MNGR

SEMI-TRUCK PICKED UP AND TOSSED NEAR MILE MARKER 88 ON I-24.

0506 PM FUNNEL CLOUD MADISONVILLE 37.34N 87.51W
03/28/2009 HOPKINS KY LAW ENFORCEMENT

REPORT OF TWO FUNNEL CLOUDS ON THE SOUTH SIDE OF THE COMMUNITY.

0511 PM FUNNEL CLOUD MADISONVILLE 37.34N 87.51W
03/28/2009 HOPKINS KY TRAINED SPOTTER

REPORTED ROTATING FUNNEL CLOUD ALONG HIGHWAY 121. PEA
SIZE HAIL REPORTED WITH THIS STORM.

0515 PM HAIL MADISONVILLE 37.34N 87.51W
03/28/2009 M0.88 INCH HOPKINS KY TRAINED SPOTTER

NICKLE SIZE HAIL REPORTED NEAR EXIT 44 ALONG CARROL
GENTRY ROAD. HAIL LASTED FROM 510 TO 515 PM.

0522 PM TSTM WND DMG APEX 37.10N 87.34W
03/28/2009 CHRISTIAN KY EMERGENCY MNGR

ROOF OF GARAGE DAMAGED. DIME TO NICKLE SIZE HAIL
ASSOCIATED WITH THE STORM.

0522 PM HAIL 2 N ELKTON 36.84N 87.16W
03/28/2009 M0.75 INCH TODD KY TRAINED SPOTTER

DIME SIZE HAIL REPORTED.

0526 PM FUNNEL CLOUD EVANSVILLE 37.98N 87.54W
03/28/2009 VANDERBURGH IN EMERGENCY MNGR

ROTATING FUNNEL CLOUD REPORTED AT THE INTERSECTION OF
HIGHWAY 164 AND THE LOLYD EXPRESSWAY.

0536 PM HAIL 5 WSW CALHOUN 37.51N 87.34W
03/28/2009 M0.88 INCH MCLEAN KY TRAINED SPOTTER

0538 PM TORNADO 7 SW OWENSBORO 37.69N 87.21W
03/28/2009 DAVIESS KY TRAINED SPOTTER

SMALL ROPE TORNADO OCCASIONALLY LIFTING OFF THE GROUND
MIDWAY BETWEEN CALHOUN AND OWENSBORO.

0542 PM HAIL CALHOUN 37.54N 87.26W
03/28/2009 M1.00 INCH MCLEAN KY TRAINED SPOTTER

QUARTER SIZE HAIL. WIND GUST 55 MPH REPORTED WITH THIS
STORM.

0546 PM HAIL CALHOUN 37.54N 87.26W
03/28/2009 M0.88 INCH MCLEAN KY TRAINED SPOTTER

0548 PM HAIL NEWBURGH 37.95N 87.40W
03/28/2009 E0.75 INCH WARRICK IN TRAINED SPOTTER

0555 PM FUNNEL CLOUD WEST LOUISVILLE 37.70N 87.29W
03/28/2009 DAVIESS KY TRAINED SPOTTER

REPORT OF 2 ROPE LIKE FUNNEL CLOUDS NEARING THE GROUND.
WINDS ESTIMATED WITH THIS STORM IS 50 TO 60 MPH.

0605 PM HAIL 1 N OWENSBORO 37.77N 87.12W
03/28/2009 M1.00 INCH DAVIESS KY TRAINED SPOTTER

QUATER SIZE HAIL REPORTED NEAR ARNOLD HIGH SCHOOL.

0615 PM HAIL SE OWENSBORO 37.76N 87.12W
03/28/2009 E1.75 INCH DAVIESS KY TRAINED SPOTTER

STREET AND DITCHES FLOODED ALONG WITH HAIL UP TO GOLF
BALL SIZE IN THE BURLEW BLVD VCTY.

\$\$

SMITTY