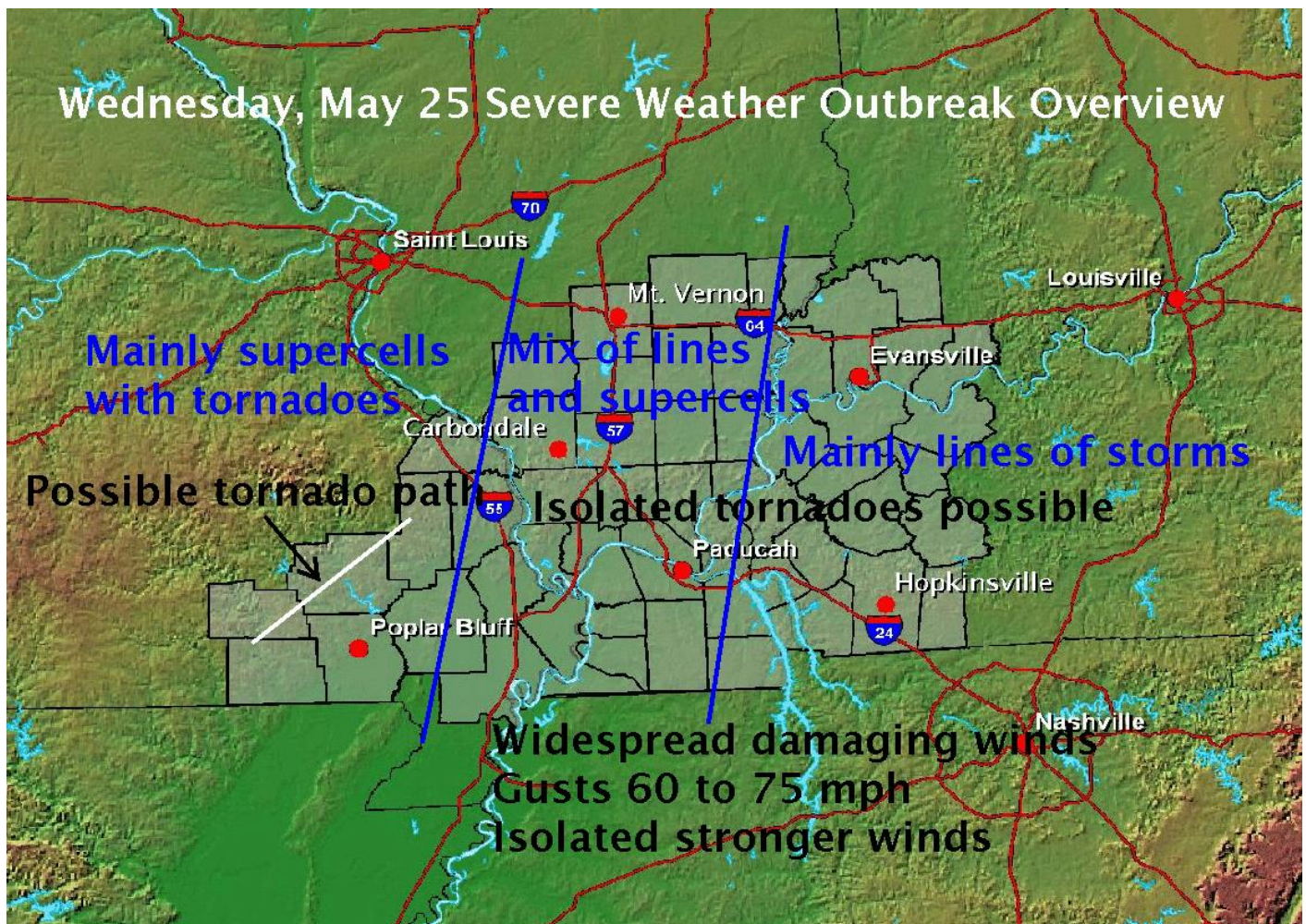


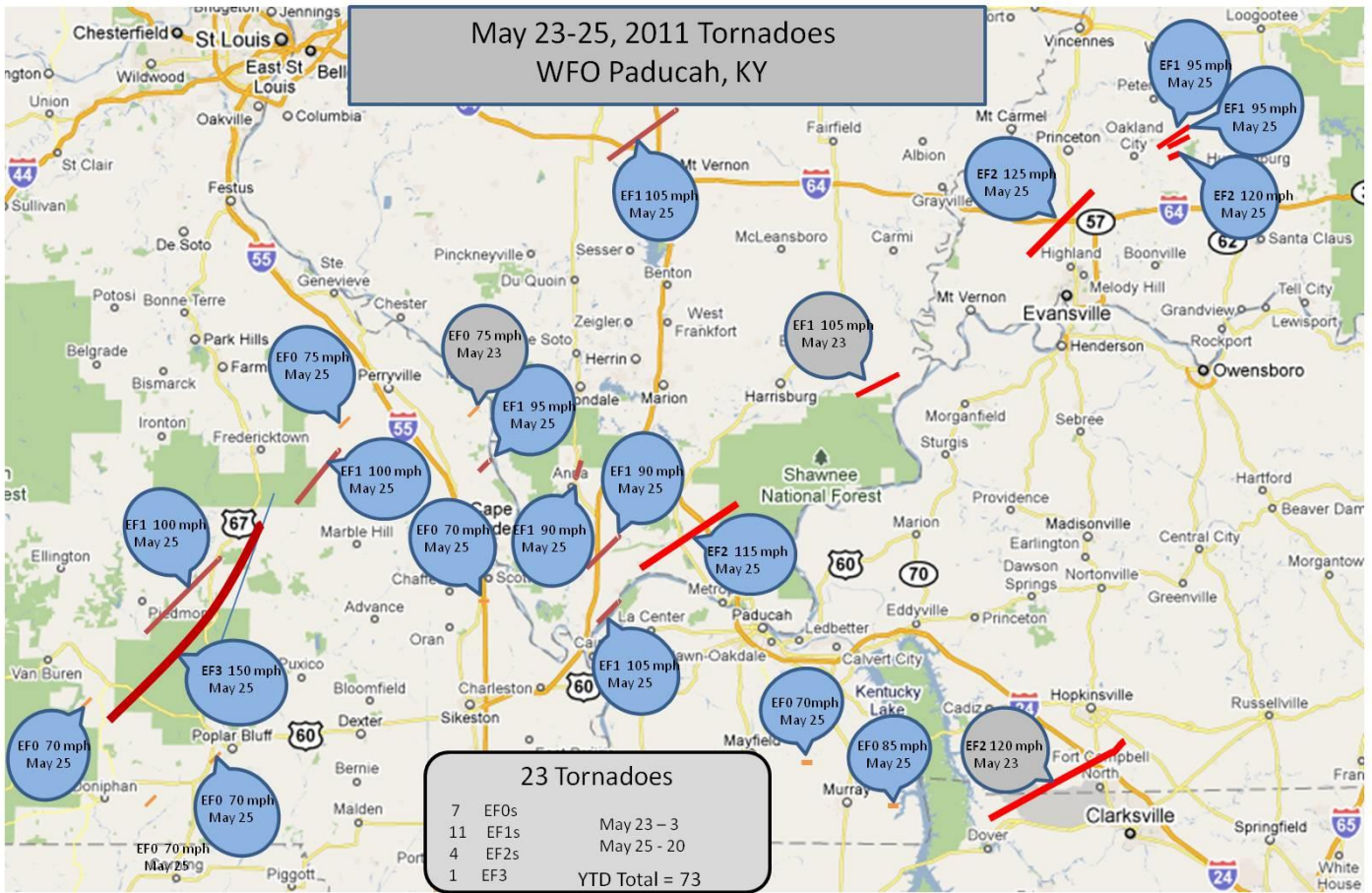
# Severe Weather Outbreak

## May 25, 2011

A widespread severe weather outbreak occurred on Wednesday, May 25. Presented here is a brief overview of the evolution of this outbreak, followed by detailed damage surveys from across the WFO Paducah forecast area:

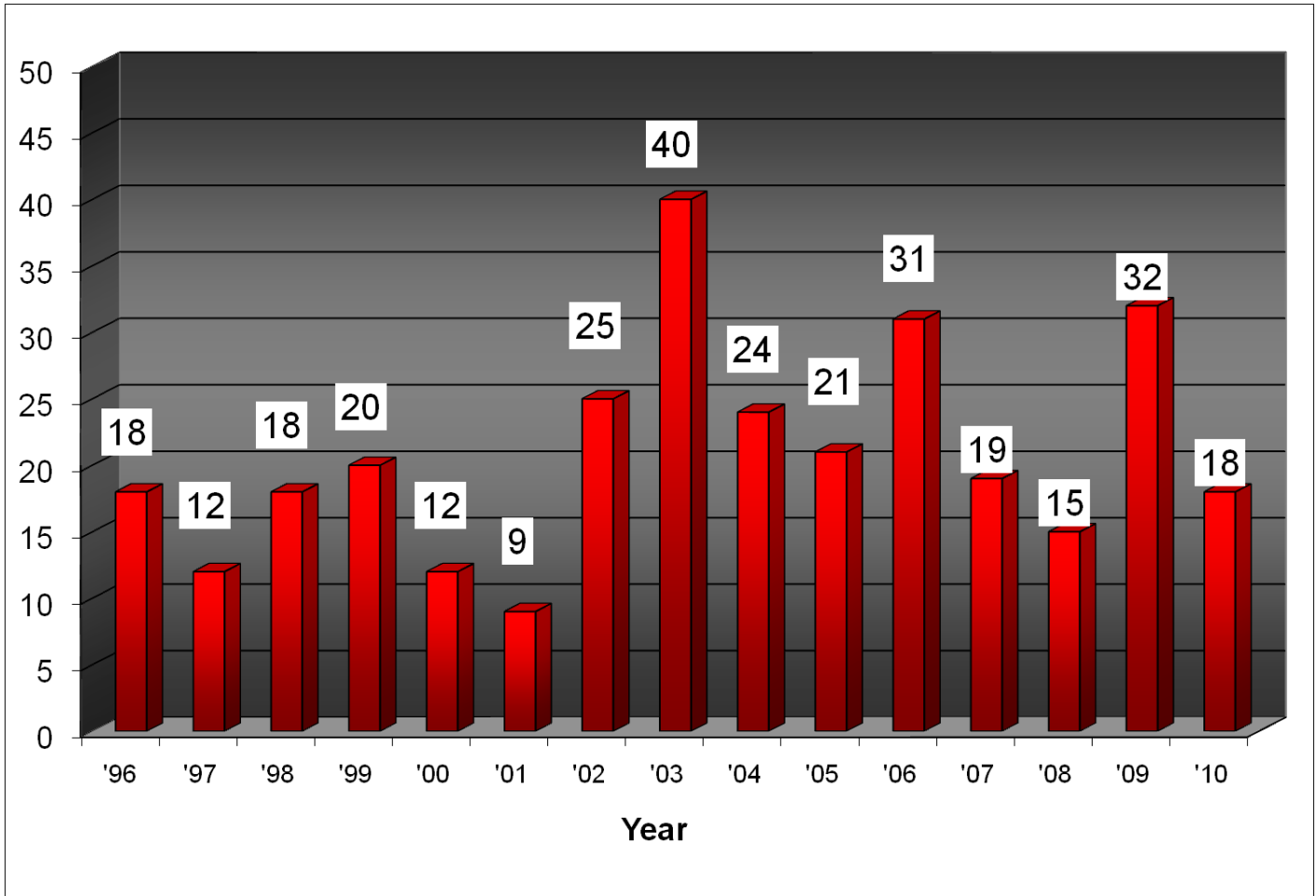
- Supercells moved northeast into portions of southeast Missouri late in the afternoon. The first Tornado Warning from the Paducah NWS office was issued at about 3 P.M.
- The strongest and longest track tornado of the outbreak occurred in areas west and north of Poplar Bluff. Video footage was taken of a rather large tornado near Ellsinore, MO. Damage surveys confirm the occurrence of an EF-3 tornado with a path length of 48 miles across portions of Carter, Wayne, and Madison Counties.
- The supercells gradually evolved into a line of severe thunderstorms over southern Illinois and the Mississippi River counties of western Kentucky and southeast Missouri. A few supercells persisted out ahead of the line, some of which contained strong rotation and brief tornadoes. An EF-2 tornado cut a 14-mile path across northwestern Jefferson County in southern Illinois.
- The line of storms raked southwest Indiana, western Kentucky, and southern Illinois with widespread damaging winds. Measured wind gusts included 75 mph at the Evansville airport and 70 mph at the Paducah airport. Damage to trees and power lines was common throughout the region. Some of the trees landed on vehicles, roads, and outbuildings.
- Isolated tornadoes occurred along the line of damaging storms. One such tornado, rated EF-2, cut a 13-mile path across portions of Posey, Vanderburgh, and Gibson Counties in southwest Indiana.



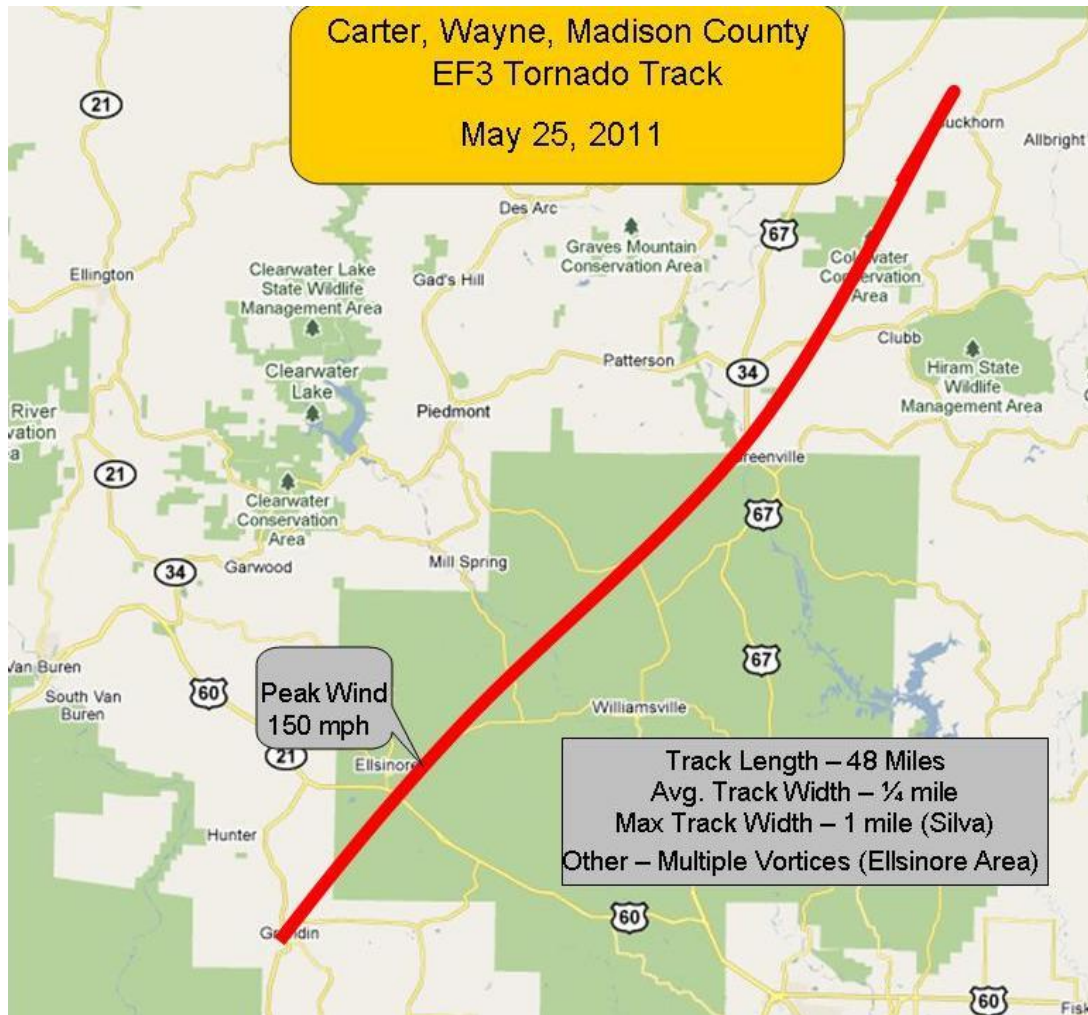


*Number of tornadoes for the year so far (Updated June 5, 2011): 73*

So how does that number compare to previous yearly totals? The graph below shows yearly tornado totals for the past 15 years across the NWS Paducah's County Warning Area.



# CARTER / WAYNE / MADISON COUNTY MISSOURI EF-3 TORNADO



- \* EVENT TYPE.....EF3 TORNADO
- \* EVENT DATE.....WEDNESDAY MAY 25 2011
- \* EVENT TIME.....3:49 PM CDT
- \* EVENT LOCATION.....1.5 MILES SOUTHWEST OF GRANDIN MISSOURI TO 1 MILE NORTHWEST OF BUCKHORN MISSOURI...OR 14.5 MILES SOUTH OF FREDERICKTOWN.
- \* PEAK WIND.....150 MPH
- \* AVG. PATH WIDTH....1/4 MILE...MAX WIDTH 1 MILE
- \* PATH LENGTH.....48 MILES
- \* INJURIES.....NONE
- \* FATALITIES.....NONE
- \* DAMAGE DETAIL.....TWO HOMES DESTROYED. ONE LOG HOME IN FAR SOUTHWESTERN WAYNE COUNTY WAS LEVELLED...WHILE ONE MODULAR HOME WITH A CONVENTIONALLY BUILT ADDITION WAS ALMOST ENTIRELY BLOWN AWAY AND CARRIED AN UNKNOWN DISTANCE. SEVERAL HOMES EAST OF ELLSINORE RECEIVED MODERATE TO MAJOR DAMAGE. IN THE GRANDIN AREA...TWO MOBILE HOMES WERE DESTROYED...AND A SCHOOL SUFFERED MAJOR DAMAGE...INCLUDING THE LOSS OF AN ENTIRE ROOF SYSTEM. IN SILVA...A CAMPER AND A MOBILE HOME WERE DESTROYED. SEVERAL VEHICLES WERE DESTROYED OR DAMAGED FROM FLYING DEBRIS AND FALLEN TREES. A COUPLE OF CHURCHES RECEIVED MAINLY MINOR

DAMAGE. HUNDREDS OF ACRES OF LARGE TREES WERE UPROOTED OR SNAPPED.



*Tornado near Ellsinore, MO*

*Tornado near Silva, MO*

*(Courtesy of Janet Leach)*

*(Courtesy of Tyler Robinson)*



*Home demolished just east of Ellsinore*



*Damage to home east of Ellsinore*



*Mobile home destroyed just northeast of Grandin*



*Damage to Grandin School*



*Trees snapped east of Hunter*

# **POSEY / VANDERBURGH / GIBSON COUNTY INDIANA**

## **EF-2 TORNADO**

\* EVENT TYPE.....EF2 TORNADO  
\* EVENT DATE.....WEDNESDAY MAY 25 2011  
\* EVENT TIME.....809 PM CDT TO 825 PM CDT  
\* EVENT LOCATION.....1.25 MILES WEST OF MARTIN INDIANA TO 5 MILES  
NORTHEAST OF HAUBSTADT INDIANA

\* PEAK WIND.....125 MPH  
\* AVG. PATH WIDTH....100 YARDS  
\* PATH LENGTH.....13 MILES  
\* INJURIES.....NONE  
\* FATALITIES.....NONE

\* DAMAGE DETAIL.....TORNADO STARTED NORTH OF ST. WENDELL WHERE  
TREES WERE DAMAGED ALONG WITH A MACHINE SHED. AS IT MOVED ACROSS  
HIGHWAY 65 HIGH TENSION POWER LINES WERE TAKEN DOWN AND THE TORNADO  
MOVED NORTH OF NISBET AND CROSSED INTERSTATE 64. AT A FARM NORTH OF  
INTERSTATE 64 A HOUSE WAS SEVERELY DAMAGED AND 4 BARNS WERE  
DESTROYED. IN HAUBSTADT POWER POLES NEAR THE BALLPARK WERE SNAPPED  
OFF AT THE BASE. THE TORNADO THEN MOVED NORTHEAST AND ENDED 5 MILES  
NORTHEAST OF HAUBSTADT.

# **JEFFERSON COUNTY ILLINOIS**

## **EF-2 TORNADO**

\* EVENT TYPE.....EF1 TORNADO (Later reclassified as EF-2)  
\* EVENT DATE.....WEDNESDAY MAY 25 2011  
\* EVENT TIME.....628 PM CDT TO 644 PM  
\* EVENT LOCATION.....5.5 MILES WEST NORTHWEST OF WOODLAWN TO 2.5  
MILES NORTH NORTHEAST OF DIX

\* PEAK WIND.....105 MPH (Later increased to EF-2)  
\* AVG. PATH WIDTH....200 YARDS  
\* PATH LENGTH.....14 MILES  
\* INJURIES.....NONE  
\* FATALITIES.....NONE

\* DAMAGE DETAIL.....LARGE MACHINE SHED/SAWMILL DESTROYED. AT  
LEAST THREE HOUSES LOST PORTIONS OF ROOF...INCLUDING ROOF  
DECKING. NUMEROUS OTHER HOMES WITH VARYING DEGREES OF SHINGLE  
AND SIDING DAMAGE. POP UP CAMPER AND SHED BLOWN 50 TO 75 FEET.  
NUMEROUS TREES AND POWER POLES SNAPPED. TWIN POLE STRUCTURE  
SUPPORTING HIGH VOLTAGE POWER LINES LEANING. PHOTO OF TORNADO  
FUNNEL. EXTENSIVE DAMAGE IN COMMUNITY OF BOYD.





*Boyd Church in repair*



*Photo of funnel cloud/tornado*



*Boyd Sawmill demolished*



*Home damaged north of Dix*

## **CAPE GIRARDEAU COUNTY MISSOURI**

### **EF-1 TORNADO**

\* EVENT TYPE.....EF1 TORNADO  
\* EVENT DATE.....WEDNESDAY MAY 25 2011  
\* EVENT TIME.....618 PM CDT TO 623 PM CDT  
\* EVENT LOCATION.....3.2 MILES NORTHWEST OF NEELEY`S LANDING TO 4.7  
MILES NORTH NORTHWEST OF NEELEY`S LANDING  
\* PEAK WIND.....95 MPH  
\* AVG. PATH WIDTH....200 YARDS  
\* PATH LENGTH.....2.3 MILES  
\* INJURIES.....NONE  
\* FATALITIES.....NONE  
\* DAMAGE DETAIL.....MAINLY TREE DAMAGE WITH SOME SNAPPED AND SOME  
UPROOTED. SOME ROOFING DAMAGE TO A HOUSE AND TIN ROLLED BACK ON A  
SMALL BARN.

## **BOLLINGER / MADISON COUNTY MISSOURI**

### **EF-1 TORNADO**

\* EVENT TYPE.....EF1 TORNADO  
\* EVENT DATE.....WEDNESDAY MAY 25 2011  
\* EVENT TIME.....527 PM CDT TO 538 PM CDT  
\* EVENT LOCATION.....1.5 MILES SOUTH OF MARQUAND IN MADISON COUNTY  
TO 1.5 MILES WEST SOUTHWEST OF ALLIANCE IN BOLLINGER COUNTY  
\* PEAK WIND.....100 MPH  
\* AVG. PATH WIDTH....200 YARDS  
\* PATH LENGTH.....13 MILES  
\* INJURIES.....NONE  
\* FATALITIES.....NONE  
\* DAMAGE DETAIL.....HUNDREDS OF TREES WERE UPROOTED AND SNAPPED  
ALONG THE PATH.

## **CARTER COUNTY MISSOURI**

### **EF-0 TORNADO**

\* EVENT TYPE.....EF0 TORNADO  
\* EVENT DATE.....WEDNESDAY MAY 25  
\* EVENT TIME.....444 PM CDT  
\* EVENT LOCATION.....3 MILES WEST OF HUNTER ALONG HIGHWAY E  
\* PEAK WIND.....70 MPH  
\* AVG. PATH WIDTH....30 YARDS  
\* PATH LENGTH.....0.25 MILES  
\* INJURIES.....NONE  
\* FATALITIES.....NONE  
\* DAMAGE DETAIL.....A FEW TREES AND TREE LIMBS WERE BLOWN DOWN.

## **SCOTT COUNTY MISSOURI**

### **EF-0 TORNADO**

\* EVENT TYPE.....EF0 TORNADO  
\* EVENT DATE.....WEDNESDAY MAY 25 2011  
\* EVENT TIME.....640 PM CDT  
\* EVENT LOCATION.....1.5 MILES SOUTHEAST OF BENTON, MO JUST S OF EXIT # 80.  
\* PEAK WIND.....70 MPH  
\* AVG. PATH WIDTH....40 YARDS  
\* PATH LENGTH.....0.5 MILES  
\* INJURIES.....NONE  
\* FATALITIES.....NONE

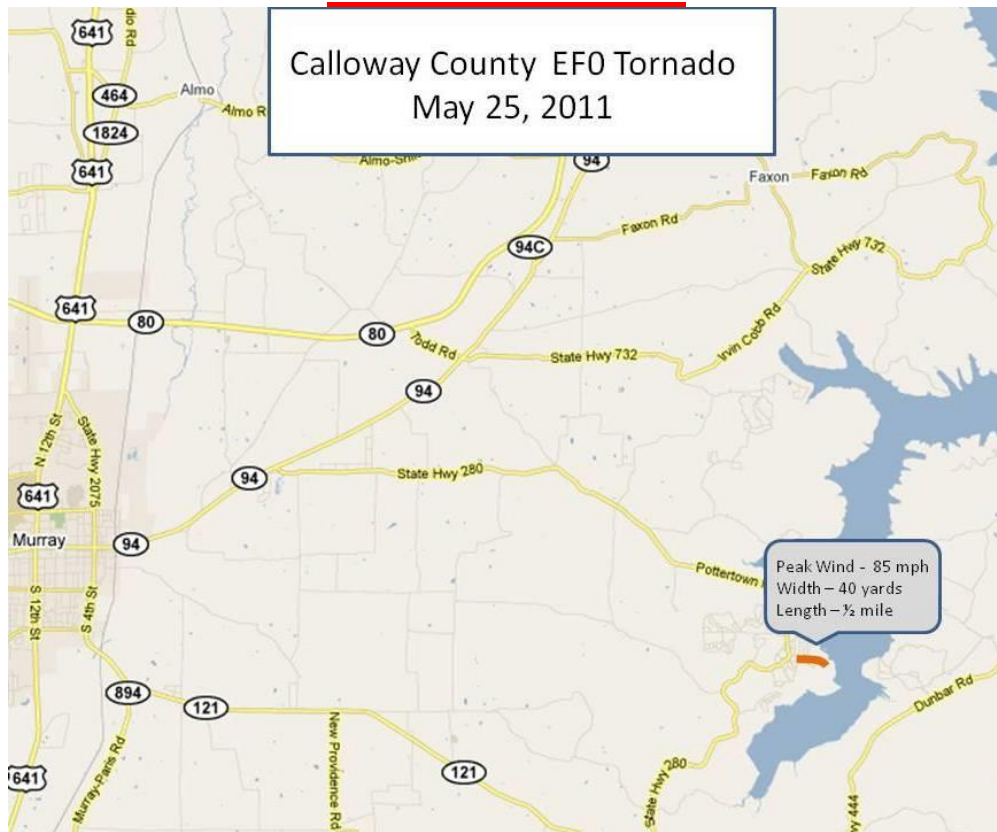
\* DAMAGE DETAIL.....A COUPLE TREES AND TREE LIMBS DOWN ALONG AND  
EITHER SIDE OF INTERSTATE 55 AT MILE MARKER 80. A SPOTTER  
REPORTED A FUNNEL CLOUD IN THIS AREA.

## **PERRY COUNTY MISSOURI**

### **EF-0 TORNADO**

\* EVENT TYPE.....EF0 TORNADO  
\* EVENT DATE.....WEDNESDAY MAY 25  
\* EVENT TIME.....451 PM CDT  
\* EVENT LOCATION.....6.5 MILES SOUTHWEST OF SILVER LAKE ON THE  
NORTH SIDE OF HIGHWAY BB  
\* PEAK WIND.....75 MPH  
\* AVG. PATH WIDTH....50 YARDS  
\* PATH LENGTH.....0.5 MILES  
\* INJURIES.....NONE  
\* FATALITIES.....NONE  
\* DAMAGE DETAIL.....SEVERAL TREES AND TREE LIMBS WERE BLOWN DOWN.

## **CALLOWAY COUNTY KENTUCKY** **EF-0 TORNADO**



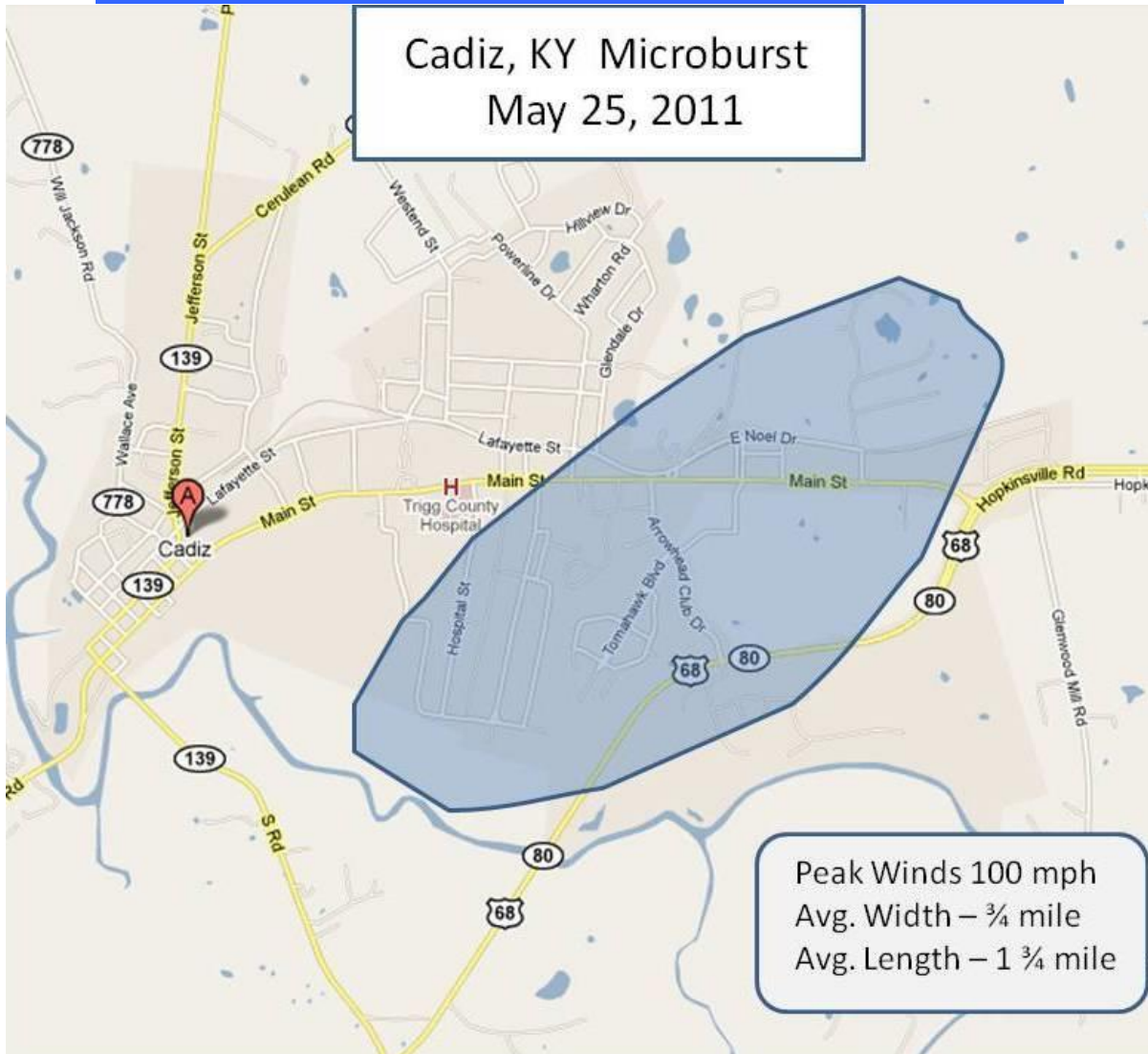
THE FOLLOWING IS THE PRELIMINARY DAMAGE ASSESSMENT FOR CALLOWAY COUNTY KY.

- \* EVENT TYPE.....EF0 TORNADO
- \* EVENT DATE.....WEDNESDAY MAY 25 2011
- \* EVENT TIME.....917 PM
- \* EVENT LOCATION.....10 MILES EAST SOUTHEAST OF MURRAY IN THE LAKEWAY AREA
- \* PEAK WIND.....85 MPH
- \* AVG. PATH WIDTH....40 YARDS
- \* PATH LENGTH.....1/2 MILE
- \* INJURIES.....NONE
- \* FATALITIES.....NONE
- \* DAMAGE DETAIL.....ABOUT A DOZEN TREES DOWN AND SEVERAL TREE TOPS SNAPPED FROM THE CORNER OF WICHAM AND LAKEWAY DRIVE TO ABOUT A QUARTER MILE SOUTHEAST OF THE CORNER OF HILL CREST AND CHANCEY DRIVE. ONE CAR COMPLETELY DESTROYED BY A LARGE FALLEN TREE ON LAKEWAY DRIVE. MOSTLY MINOR DAMAGE OCCURRED TO A COUPLE OF HOMES OR GARAGES...AND AT LEAST ONE POWER LINE DOWN.

## **CAPE GIRARDEAU COUNTY MISSOURI MICROBURST**

- \* EVENT TYPE.....MICROBURST
- \* EVENT DATE.....WEDNESDAY MAY 25 2011
- \* EVENT TIME.....630 PM CDT
- \* EVENT LOCATION.....1/2 MILE NORTH OF FRUITLAND ALONG AND EAST OF HIGHWAY 61
- \* PEAK WIND.....80 MPH
- \* AVG. PATH WIDTH....400 YARDS
- \* PATH LENGTH.....0.5 MILES
- \* INJURIES.....NONE
- \* FATALITIES.....NONE
- \* DAMAGE DETAIL.....SEVERAL TREES BLOWN DOWN. TOP OF BARN DESTROYED. SHINGLES BLOWN OFF A HOUSE.

# TRIGG COUNTY KENTUCKY MICROBURST



THE FOLLOWING IS THE PRELIMINARY DAMAGE ASSESSMENT FOR TRIGG COUNTY.

- \* EVENT TYPE.....MICROBURST
- \* EVENT DATE.....WEDNESDAY MAY 25 2011
- \* EVENT TIME.....910 PM CDT
- \* EVENT LOCATION.....SOUTH AND EAST SIDE OF CADIZ
- \* PEAK WIND.....100 MPH
- \* AVG. PATH WIDTH.... $\frac{3}{4}$  MILE
- \* PATH LENGTH..... $1 \frac{3}{4}$  MILES
- \* INJURIES.....NONE
- \* FATALITIES.....NONE
- \* DAMAGE DETAIL.....ABOUT 30 HOMES WITH LIGHT TO MODERATE DAMAGE...MAINLY DUE TO FALLEN TREES. ONE HOME DESTROYED BY A LARGE FALLEN TREE. ONE BUSINESS DAMAGED WITH THE END OF A STORAGE BUILDING DESTROYED. SEVERAL OTHER STRUCTURES RECEIVED ROOF DAMAGE.

# **WAYNE COUNTY MISSOURI**

## **EF-1 TORNADO**

THE FOLLOWING IS THE PRELIMINARY DAMAGE ASSESSMENT FOR WAYNE COUNTY MISSOURI.

- \* EVENT TYPE.....EF1 TORNADO
- \* EVENT DATE.....WEDNESDAY MAY 25 2011
- \* EVENT TIME.....437 PM
- \* EVENT LOCATION.....ABOUT 1 MILE SOUTH OF MILL SPRINGS TO SAM A BAKER STATE PARK
- \* PEAK WIND.....100 MPH
- \* AVG. PATH WIDTH....100 YARDS
- \* PATH LENGTH.....17.5 MILES
- \* INJURIES.....NONE
- \* FATALITIES.....NONE
- \* DAMAGE DETAIL.....TORNADO WAS NOT ON THE GROUND THE WHOLE PATH LENGTH. NUMEROUS TREES UPROOTED AND SNAPPED...ESPECIALLY ALONG HIGHWAY U BETWEEN HIGHWAY B AND FF. MAINLY TREE DAMAGE TO THE SOUTHWEST OF THAT AREA. ALONG HIGHWAY 34 TWO OUTBUILDINGS WERE DESTROYED AND A SMALL COVERED BRIDGE ON PERSONAL PROPERTY DESTROYED. THERE WAS SOME MINOR SOFFIT DAMAGE TO ANOTHER HOUSE ALONG HIGHWAY 34. ONLY A FEW TREES WERE DAMAGED TO THE NORTHEAST OF THIS AREA. A FEW POWER POLES WERE SNAPPED ALONG THE PATH AS WELL.

# **PULASKI COUNTY ILLINOIS**

## **EF-1 TORNADO**

THE FOLLOWING IS THE PRELIMINARY DAMAGE ASSESSMENT FOR PULASKI COUNTY ILLINOIS.

- \* EVENT TYPE.....EF1 TORNADO
- \* EVENT DATE.....WEDNESDAY MAY 25 2011
- \* EVENT TIME.....645 PM
- \* EVENT LOCATION.....ABOUT 1.5 MILES SOUTHEAST OF PULASKI TO 6.5 MILES NORTHWEST OF GRAND CHAIN
- \* PEAK WIND.....90 MPH
- \* AVG. PATH WIDTH....100 YARDS
- \* PATH LENGTH.....7.5 MILES
- \* INJURIES.....NONE
- \* FATALITIES.....NONE
- \* DAMAGE DETAIL.....MAINLY TREE DAMAGE WITH TREES UPROOTED AND SNAPPED. SOME STRAIGHT LINE WIND DAMAGE CAN BE FOUND ON THE SOUTHEAST END OF THE PATH. ONE SMALL SHED WAS DAMAGED.

# PULASKI COUNTY ILLINOIS EF-1 TORNADO



THE FOLLOWING IS THE PRELIMINARY DAMAGE ASSESSMENT FOR PULASKI COUNTY ILLINOIS.

- \* EVENT TYPE.....EF1 TORNADO
- \* EVENT DATE.....WEDNESDAY MAY 25 2011
- \* EVENT TIME.....640 PM
- \* EVENT LOCATION.....SOUTHWEST SIDE OF MOUND CITY TO ABOUT 5 MILES NORTHEAST OF MOUNT CITY
- \* PEAK WIND.....105 MPH
- \* AVG. PATH WIDTH....200 YARDS
- \* PATH LENGTH.....5.25 MILES
- \* INJURIES.....NONE
- \* FATALITIES.....NONE
- \* DAMAGE DETAIL.....MAINLY TREE DAMAGE WITH TREES UPROOTED AND SNAPPED. ONE SMALL MOBILE HOME WAS PICKED UP AND THROWN INTO A POWER POLE. ROOF DAMAGE TO SEVERAL HOMES...MAINLY SHINGLES. NUMEROUS TREES UPROOTED AND SNAPPED. THE TORNADO APPEARED TO END ALONG THE OHIO RIVER. IF IT DID CONTINUE...IT WAS IN INACCESSIBLE AREAS OF BALLARD COUNTY.



# PULASKI/MASSAC/JOHNSON/POPE COUNTIES EF-2 TORNADO



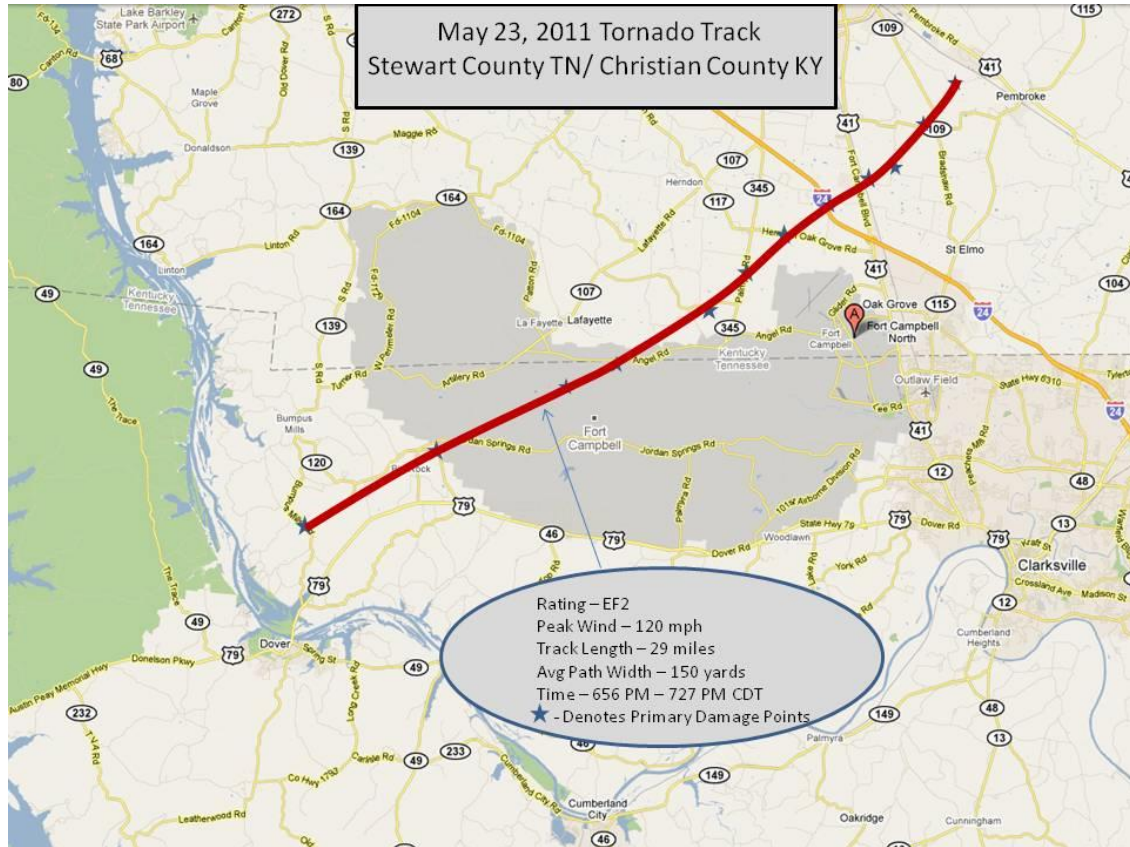
THE FOLLOWING IS THE PRELIMINARY DAMAGE ASSESSMENT FOR PULASKI...  
MASSAC...JOHNSON...AND POPE COUNTY ILLINOIS.  
THIS IS AN UPDATED STATEMENT TO AMEND A PREVIOUS TORNADO REPORT  
ISSUED ON MAY 27 FOR A TORNADO NEAR GRANTSBURG IN JOHNSON COUNTY.  
FURTHER INVESTIGATION REVEALED A LONGER TORNADO PATH.

\* EVENT TYPE.....EF2 TORNADO  
\* EVENT DATE.....WEDNESDAY MAY 25 2011  
\* EVENT TIME.....655 PM  
\* EVENT LOCATION.....3 MILES SOUTHEAST OF GRAND CHAIN IN PULASKI COUNTY TO 2.5 MILES  
NORTHEAST OF GRANTSBURG ALONG THE JOHNSON/POPE COUNTY LINE.

\* PEAK WIND.....115 MPH  
\* AVG. PATH WIDTH....300 YARDS  
\* PATH LENGTH.....17 MILES  
\* INJURIES.....NONE  
\* FATALITIES.....NONE  
\* DAMAGE DETAIL.....TORNADO WAS VERY WEAK AS IT TOUCHED DOWN ALONG  
THE OHIO RIVER. IN THIS AREA...MAINLY TREE DAMAGE WITH TREES  
UPROOTED AND A FEW SNAPPED. THE TORNADO REMAINED WEAK UNTIL JUST  
NORTH OF THE MERMET LAKE CONSERVATION AREA IN MASSAC COUNTY. HERE  
THE TORNADO REACHED PEAK INTENSITY. A BARN WAS DESTROYED AND DEBRIS  
WAS THROWN SEVERAL HUNDRED YARDS. TWO GRAIN BINS WERE  
DESTROYED...ONE THROWN OVER 265 YARDS. OTHER SMALL OUTBUILDINGS WERE  
DESTROYED. MINOR DAMAGE TO HOME. AS THE TORNADO MOVED NORTHEAST IT  
DAMAGED A HOUSE NEAR THE MASSAC JOHNSON COUNTY LINE. THE BACK PORCH  
WAS RIPPED OFF THE BACK SIDE OF THE HOME. TREES WERE SNAPPED AND  
THROWN INTO A VEHICLE AND GARAGE. THERE WAS ROOF...SIDING...SOFFIT...AND  
SHUTTER DAMAGE TO THE HOME AS WELL. IN A FIELD NEARBY...AN IRRIGATION SYSTEM  
WAS OVERTURNED. A BARN WAS DESTROYED JUST NORTHEAST OF THIS LOCATION IN SOUTHERN  
JOHNSON COUNTY. THE TORNADO CROSSED I-24 AND SIGNIFICANT TREE DAMAGE WAS  
DONE NEAR GANNTOWN...TREES WERE SNAPPED AND UPROOTED IN THE AREA AND  
A HOME HAD MINOR DAMAGE...INCLUDING TO A METAL ROOF. A 20 X 50 FOOT  
POLE BARN DESTROYED JUST WEST OF GRANTSBURG. NUMEROUS TREES WERE  
UPROOTED AND SNAPPED IN THE AREA. SWIRLS WERE FOUND IN TALL GRASS.

\* IN ADDITION...THERE WAS A MAJOR DOWNBURST JUST EAST OF THE END  
OF THE TORNADO PATH NEAR GLENDALE IN POPE COUNTY. WINDS UP TO 100  
MPH TORE PART OF A ROOF...INCLUDING DECKING...OFF A HOUSE. A FRONT  
PORCH WAS BLOWN OFF A HOUSE. A HOG BARN WAS UNROOFED...A POLE BARN  
AND CATTLE BARN WERE DESTROYED...A GRAIN BIN WAS BLOWN OVER. TREES  
WERE SNAPPED.

# CHRISTIAN COUNTY KENTUCKY EF-2 TORNADO

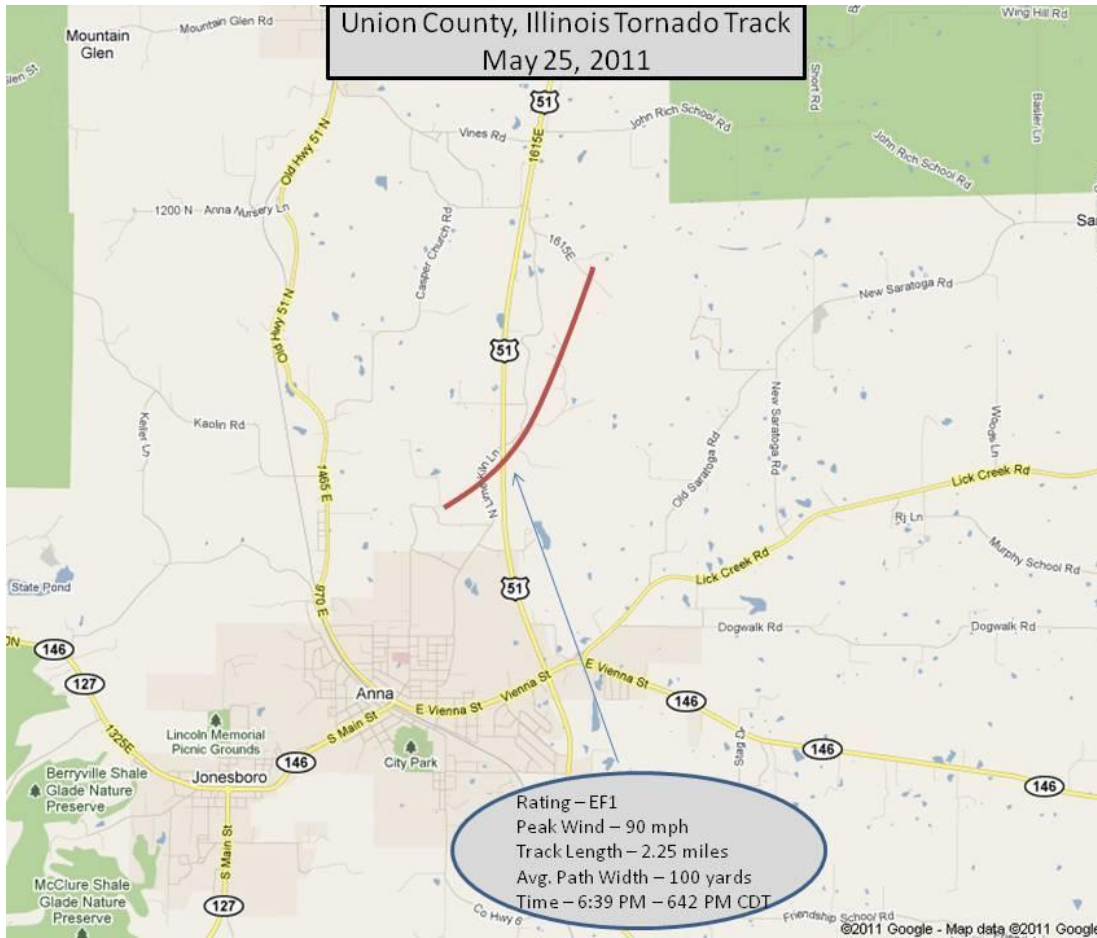


...DAMAGE SURVEY RESULTS FOR CHRISTIAN COUNTY KENTUCKY...

THE FOLLOWING IS THE PRELIMINARY DAMAGE ASSESSMENT FOR CHRISTIAN COUNTY KENTUCKY. NOTE THAT THIS IS A CONTINUATION OF THE STEWART COUNTY TENNESSEE TORNADO TRACK SURVEYED BY THE NWS IN NASHVILLE TN.

- \* EVENT TYPE.....EF2 TORNADO
- \* EVENT DATE.....MONDAY MAY 23 2011
- \* EVENT TIME.....656 PM CDT UNTIL 727 PM CDT
- \* EVENT LOCATION.....4 MILES SOUTHWEST OF BIG ROCK TN TO 3 MILES SOUTHEAST OF LAFAYETTE KY TO 3 MILES NORTHWEST OF PEMBROKE KY
- \* PEAK WIND.....120 MPH
- \* AVG. PATH WIDTH....150 YARDS
- \* PATH LENGTH.....29 MILES
- \* INJURIES.....NONE (KY PART)
- \* FATALITIES.....NONE
- \* DAMAGE (KY PART)...SEVERAL BARNs AND A GRAIN BIN DAMAGED OR DESTROYED. NUMEROUS LARGE TREES UPROOTED OR SNAPPED. A TRACTOR TRAILOR WAS OVERTURNED AT MILE MARKER 85 ON I-24.

# UNION COUNTY ILLINOIS EF-1 TORNADO

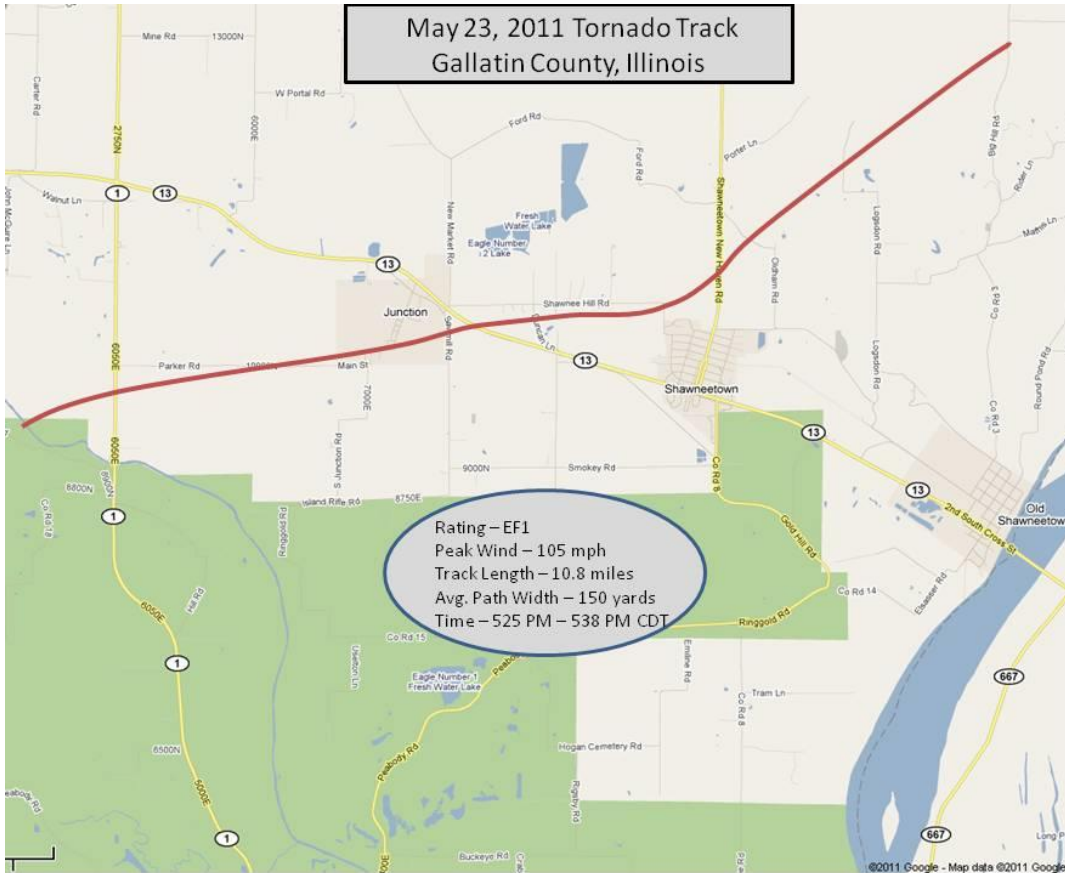


...DAMAGE SURVEY RESULTS FOR UNION COUNTY IL...

THE FOLLOWING IS THE FINAL DAMAGE ASSESSMENT FOR UNION COUNTY IL.

- \* EVENT TYPE.....EF1 TORNADO
- \* EVENT DATE.....WEDNESDAY MAY 25 2011
- \* EVENT TIME.....6:39 PM CDT
- \* EVENT LOCATION.....1 TO 3 MILES NORTH NORTHEAST OF ANNA, IL
- \* PEAK WIND.....90 MPH
- \* AVG. PATH WIDTH....100 YARDS
- \* PATH LENGTH.....2.25 MILES
- \* INJURIES.....NONE
- \* FATALITIES.....NONE
- \* DAMAGE DETAIL.....SEVERAL DOZEN TREES WERE UPROOTED OR SNAPPED BEGINNING AT THE CHOATE MENTAL HEALTH CENTER AND ALONG AND EAST OF SPANISH BLUFF RD AND ROBIN HOOD LN. A VEHICLE WAS DESTROYED BY A FALLEN TREE IN SCHERWOOD ESTATES. AT LEAST A COUPLE BUILDINGS AND HOUSES SUSTAINED MOSTLY MINOR ROOF DAMAGE, INCLUDING THE LOSS OF SOME SHINGLES.

# GALLATIN COUNTY ILLINOIS EF-1 TORNADO



...DAMAGE SURVEY RESULTS FOR GALLATIN COUNTY IL...  
THE FOLLOWING IS THE FINAL DAMAGE ASSESSMENT FOR GALLATIN COUNTY IL.

EVENT # 1....

- \* EVENT TYPE.....EF1 TORNADO
- \* EVENT DATE.....MONDAY MAY 23 2011
- \* EVENT TIME.....525 PM CDT
- \* EVENT LOCATION.....2.5 MILES SE OF EQUALITY IL TO 3.5 MILES NE OF SHAWNEETOWN IL
- \* PEAK WIND.....105 MPH
- \* AVG. PATH WIDTH....150 YARDS
- \* PATH LENGTH.....10.8 MILES
- \* INJURIES.....NONE
- \* FATALITIES.....NONE
- \* DAMAGE DETAIL.....SEVERAL HOMES AND BUILDINGS WITH MINOR TO MODERATE DAMAGE IN THE JUNCTION AND SHAWNEETOWN AREAS. SEVERAL BARNs OR SHEDS WERE DESTROYED AND MANY DOZENS OF TREES WERE UPROOTED OR SNAPPED. SEVERAL SPOTTERS REPORTED SEEING A FUNNEL CLOUD IN THE SHAWNEETOWN AREA.

EVENT # 2...

- \* EVENT TYPE.....MICROBURST
- \* EVENT DATE.....WEDNESDAY MAY 25 2011
- \* EVENT TIME.....751 PM
- \* EVENT LOCATION.....FROM THE SOUTH SIDE OF EQUALITY TO NORTHEAST OF THE HIGHWAY 13/HIGHWAY 1 INTERSECTION.
- \* PEAK WIND.....90 MPH
- \* AVG. PATH WIDTH....1/2 MILE
- \* PATH LENGTH.....5+ MILES
- \* INJURIES.....NONE
- \* FATALITIES.....NONE

\* DAMAGE DETAIL.....2 MOBILE HOMES WERE DESTROYED AND A BARN WAS LEVELED ON THE SOUTH SIDE OF EQUALITY. THE GALLATIN COUNTY HIGH SCHOOL LOST PART OF IT`S ROOF. SEVERAL OTHER HOMES SUSTAINED MAINLY MINOR ROOF DAMAGE. TREES AND TREE LIMBS WERE DOWN THROUGHOUT THE AREA.

## **PIKE COUNTY INDIANA TORNADOES (EF-1)**

...DAMAGE SURVEY RESULTS FOR PIKE COUNTY INDIANA...  
THE FOLLOWING IS THE FINAL DAMAGE ASSESSMENT FOR SOUTHERN PIKE COUNTY INDIANA TORNADO. THERE WERE TWO TORNADOES IN PIKE COUNTY DURING THIS EVENT. **THIS IS FOR THE FIRST TORNADO.**

- \* EVENT TYPE.....EF1 TORNADO
- \* EVENT DATE.....WEDNESDAY MAY 25 2011
- \* EVENT TIME.....836 PM CDT
- \* EVENT LOCATION....1.5 MILES NORTHWEST OF COE TO 4 MILES SOUTHEAST OF WINSLOW
- \* PEAK WIND.....95 MPH
- \* AVG. PATH WIDTH....40 YARDS
- \* PATH LENGTH.....5 MILES
- \* INJURIES.....NONE
- \* FATALITIES.....NONE
- \* DAMAGE DETAIL.....SEVERAL DOZEN TREES WERE UPROOTED OR SNAPPED ALONG THE PATH.

---

THE FOLLOWING IS THE FINAL DAMAGE ASSESSMENT FOR SOUTHERN PIKE COUNTY INDIANA TORNADO. THERE WERE TWO TORNADOES IN PIKE COUNTY DURING THIS EVENT. **THIS IS FOR THE SECOND TORNADO WHICH WAS LOCATED JUST SOUTH OF THE FIRST TORNADO.**

- \* EVENT TYPE.....EF1 TORNADO
- \* EVENT DATE.....WEDNESDAY MAY 25 2011
- \* EVENT TIME.....839 PM CDT
- \* EVENT LOCATION....4 MILES SOUTH OF WINSLOW TO 4.25 MILES SOUTHEAST OF WINSLOW
- \* PEAK WIND.....95 MPH
- \* AVG. PATH WIDTH....35 YARDS
- \* PATH LENGTH.....4 MILES
- \* INJURIES.....NONE
- \* FATALITIES.....NONE
- \* DAMAGE DETAIL.....SEVERAL DOZEN TREES WERE UPROOTED OR SNAPPED ALONG THE PATH. SOME TREES HAD TRUNKS OF 2 FEET IN DIAMETER.

---

...DAMAGE SURVEY RESULTS FOR PIKE COUNTY INDIANA...  
THE FOLLOWING IS THE PRELIMINARY DAMAGE ASSESSMENT FOR THE SOUTHWEST PIKE COUNTY INDIANA TORNADO.

- \* EVENT TYPE.....EF2 TORNADO
- \* EVENT DATE.....WEDNESDAY MAY 25 2011
- \* EVENT TIME.....835 PM CDT
- \* EVENT LOCATION....4.5 MILES SOUTHEAST OF OAKLAND CITY TO 6 MILES SOUTHEAST OF OAKLAND CITY.
- \* PEAK WIND.....120 MPH
- \* AVG. PATH WIDTH....175 YARDS
- \* PATH LENGTH.....1.5 MILES
- \* INJURIES.....NONE
- \* FATALITIES.....NONE
- \* DAMAGE DETAIL.....THOUSANDS OF LARGE TREES WERE SNAPPED OR UPROOTED ON MINE RECLAMATION LAND NORTH OF CR 900.

# **CALLOWAY COUNTY KENTUCKY EF0 TORNADO**

...DAMAGE SURVEY RESULTS FOR NORTHWEST CALLOWAY COUNTY KY...  
THE FOLLOWING IS THE FINAL DAMAGE ASSESSMENT FOR NORTHWEST  
CALLOWAY COUNTY KENTUCKY TORNADO.

\* EVENT TYPE.....EF0 TORNADO  
\* EVENT DATE.....WEDNESDAY MAY 25 2011  
\* EVENT TIME.....819 PM CDT  
\* EVENT LOCATION.....2.5 MILES NORTHWEST OF KIRKSEY KY OR 10 MILES NORTHWEST OF MURRAY  
KY  
\* PEAK WIND.....70 MPH  
\* AVG. PATH WIDTH....50 YARDS  
\* PATH LENGTH.....0.25 MILES  
\* INJURIES.....NONE  
\* FATALITIES.....NONE  
\* DAMAGE DETAIL.....SEVERAL DOZEN MAINLY SMALL TREES WERE BROKEN OR UPROOTED  
IMMEDIATELY NORTH OF SWIFT ROAD NEAR THE SOUTH FORK OF DUNCAN CREEK.