

PUBLIC INFORMATION STATEMENT  
NATIONAL WEATHER SERVICE PADUCAH KY  
447 PM CDT THU MAY 15 2014

...NWS DAMAGE SURVEY FOR 05/14/14 TORNADO EVENT IN  
CHRISTIAN COUNTY KENTUCKY...

.TORNADO...

RATING: EF-2

ESTIMATED PEAK WIND: 125 MPH

PATH LENGTH /STATUTE/: 3.5 MILES

PATH WIDTH /MAXIMUM/: 150 YARDS

FATALITIES: 0

INJURIES: 0

START DATE: MAY 14 2014

START TIME: 436 PM CDT

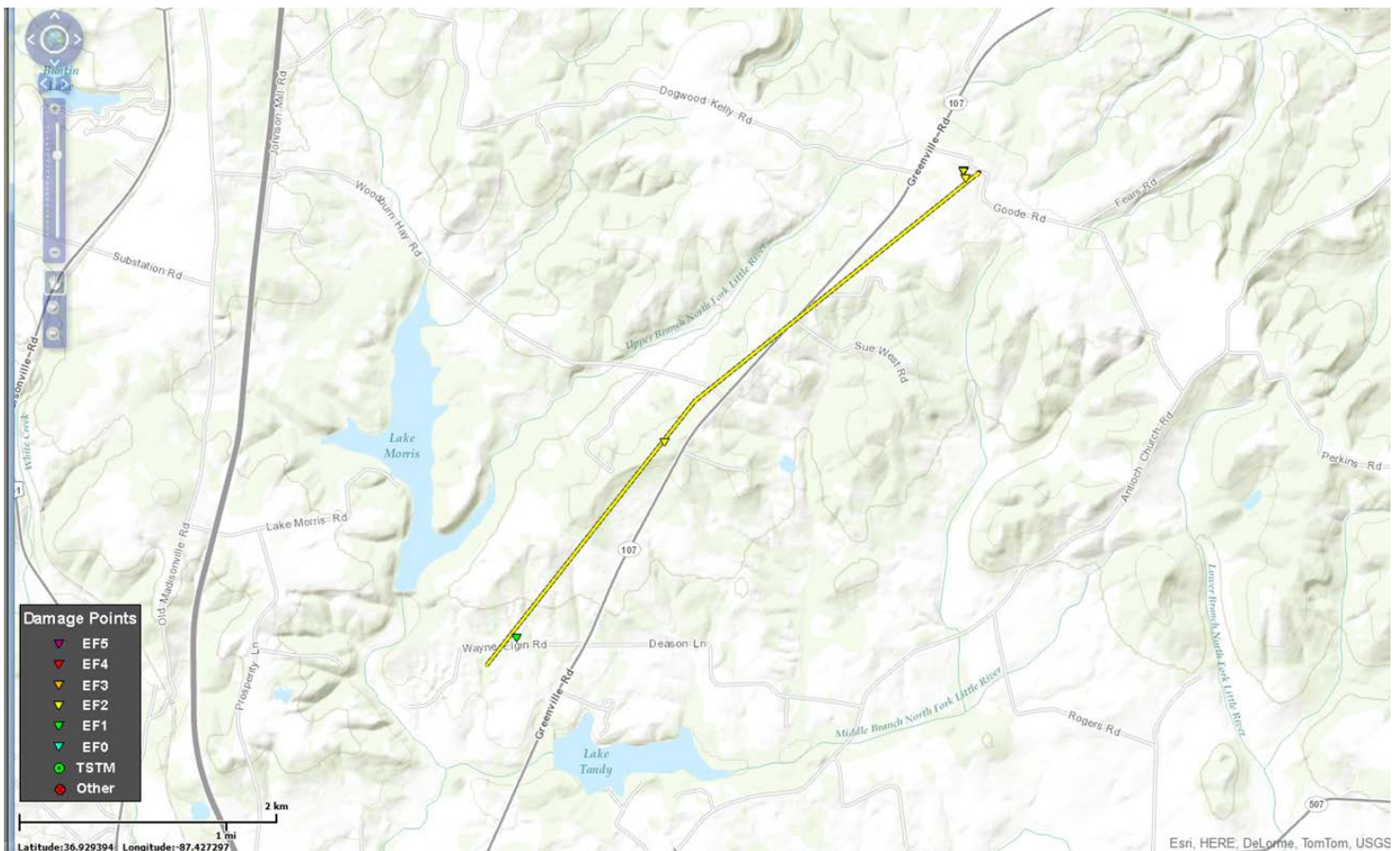
START LOCATION: 5 MILES NORTH NORTHEAST OF HOPKINSVILLE

END DATE: MAY 14 2014

END TIME: 440 PM CDT

END LOCATION: 8.5 MILES NORTH NORTHEAST OF HOPKINSVILLE

HALF DOZEN HOMES SUSTAINED LIGHT TO MODERATE DAMAGE SUCH AS  
SHINGLES BLOWN OFF AND A 2-BY-4 IMPALED INTO A HOUSE. TWO POLE  
BARNs DESTROYED. PORTABLE STORAGE BUILDING ON CINDER BLOCKS MOVED  
20 TO 25 YARDS BUT NOT DAMAGED. NUMEROUS TREES SNAPPED AND UPROOTED.



.THUNDERSTORM WIND...

PEAK WIND; ESTIMATED 125 MPH  
PATH LENGTH /STATUTE/: 0.2 MILES  
PATH WIDTH /MAXIMUM/: 50 YARDS  
FATALITIES: 0  
INJURIES: 0

START DATE: MAY 14 2014  
START TIME: 440 PM CDT  
START LOCATION: 4 MILES NORTHEAST OF HOPKINSVILLE

END DATE: MAY 14 2014  
END TIME: 440 PM CDT  
END LOCATION: 4.2 MILES NORTHEAST OF HOPKINSVILLE

DOWNBURST REMOVED 150 FEET OF ROOF FROM A SELF STORAGE BUILDING.  
J-BOLTS ANCHORED THE ROOF TO THE STRUCTURE.

NOTE:  
THE INFORMATION IN THIS STATEMENT IS PRELIMINARY AND SUBJECT TO  
CHANGE PENDING FINAL REVIEW OF THE EVENTS AND PUBLICATION IN NWS  
STORM DATA.

\$\$