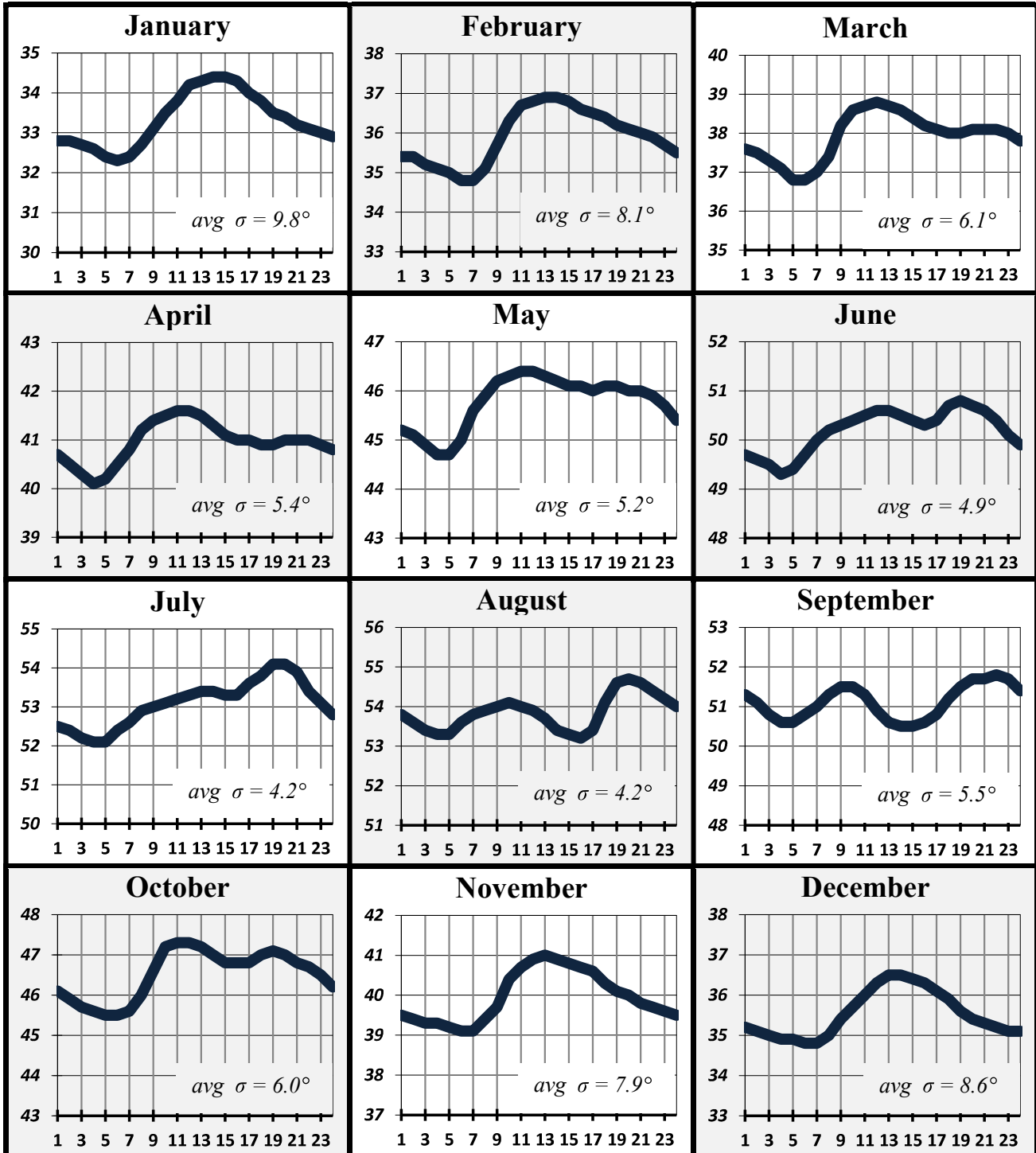


**PORTLAND: Average Hourly Dew Point Temperature Curves, by Month<sup>1</sup>**



<sup>1</sup>Time is local standard time. Shown also is the standard deviation for that month's data. .

There is a diurnal trend of a rising dew point temperature during the morning, then a slow gradual fall during the afternoon into evening. Interestingly, this trend is interrupted during the summer months, with a jump during the evening. This jump coincides with an increase of northwesterly winds as onshore flow up the Columbia River brings marine air from the coast into the Portland/Vancouver area.