

# Drought Information Statement for Western & Central Wyoming

Valid January 15th, 2025

Issued By: National Weather Service Riverton, WY

Contact Information: [nws.riverton@noaa.gov](mailto:nws.riverton@noaa.gov)

- This product will be updated by February 6th, 2026 or sooner if drought conditions change significantly.
  - Please see all currently available products at <https://drought.gov/drought-information-statements>.
  - Please visit <https://www.weather.gov/riw/DroughtInformationStatement> for previous statements.
  - Please visit <https://www.drought.gov/drought-status-updates> for regional drought status updates.
- 
- Severe (D2) conditions in Lincoln, Sweetwater and Uinta Counties.
  - Conditions have improved across Western Park and Fremont counties as well as across Lincoln, Teton, and small parts of Sweetwater and Johnson counties



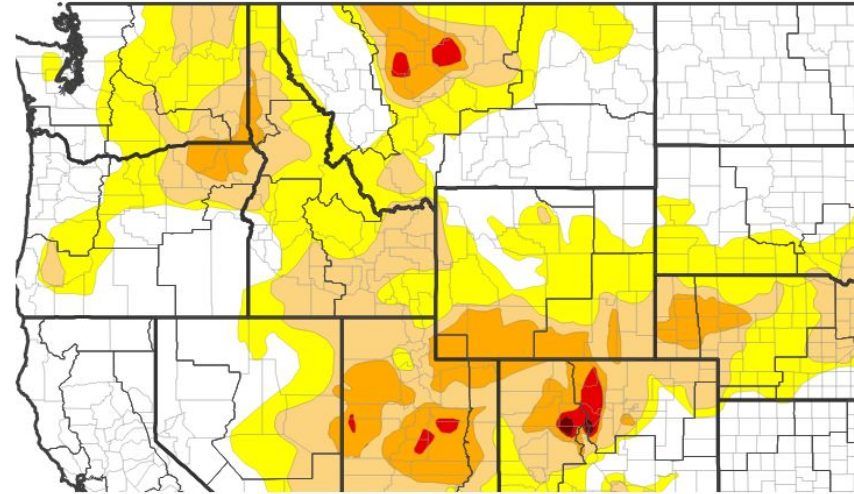


# U.S. Drought Monitor

Link to the [latest U.S. Drought Monitor](#) for Western & Central Wyoming

- Drought intensity and Extent
  - **D4 (Exceptional Drought):** None occurring.
  - **D3 (Extreme Drought):** None occurring.
  - **D2 (Severe Drought):** Most of Sweetwater County, along with small portions of Lincoln and Uinta Counties.
  - **D1 (Moderate Drought):** Portions of Teton, Sweetwater, Lincoln, Fremont, and Big Horn Counties.
  - **D0: (Abnormally Dry):** Parts of Park, Fremont, Teton, Lincoln, Sublette and Big Horn counties along with Washakie, Johnson and Natrona Counties.

U.S. Drought Monitor



U.S. Drought Monitor



Source(s): NDMC, NOAA, USDA; image courtesy of Drought.gov

Data Valid: 01/13/26



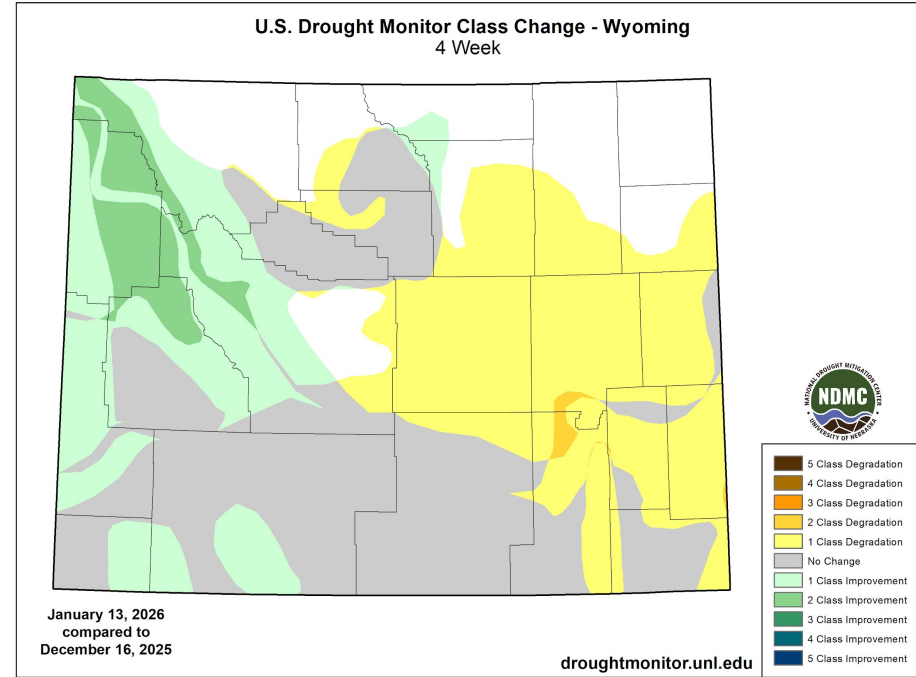


# Recent Change in Drought Intensity

Link to the latest [4-week change map](#) for Western & Central Wyoming

## Four Week Drought Monitor Class Change

- **Drought Worsened:** Johnson and Natrona counties as well as small slivers of Fremont, Big Horn, Washakie, and Hot Spring counties.
  - **No Change:** Most of Sweetwater, Hot Springs and Washakie counties.
  - **Drought Improved:** Western Park and Fremont counties as well as across Lincoln, Teton, and small parts of Sweetwater and Johnson counties.
- December was fairly dry and quite breezy across eastern Wyoming so little change to worsening conditions. There were a couple of stronger storms that brought rain and snow to the west with some nice improvement.



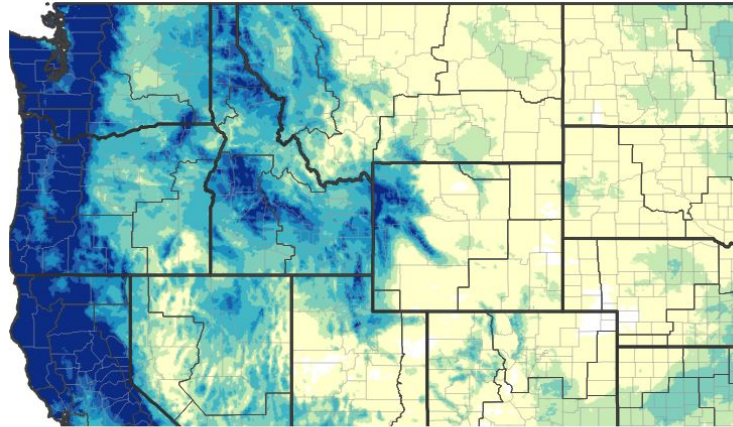


# Precipitation

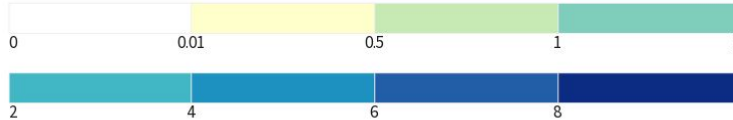
Most of the state saw less than normal precipitation amounts.

Western WY has seen a surplus in precipitation. There were a few storms with good snow and rain amounts. Higher elevations did see nice snow accumulations.

### 30-Day Precipitation Accumulations (Inches)



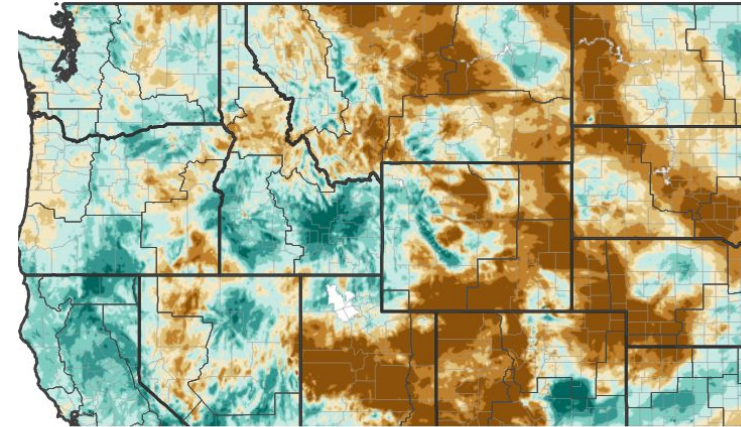
Inches of Precipitation



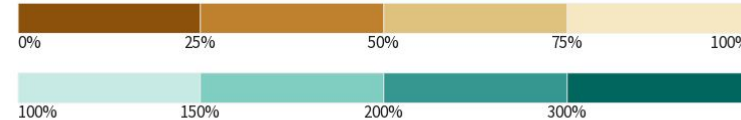
Source(s): National Weather Service Multi-Radar Multi-Sensor System; image courtesy of Drought.gov

Last Updated: 01/15/26

### 30-Day Percent of Normal Precipitation



Precipitation Shown as a Percentage of Normal Conditions



Source(s): National Weather Service Multi-Radar Multi-Sensor System; image courtesy of Drought.gov

Last Updated: 01/15/26





# Summary of Impacts

Links: See/submit [Condition Monitoring Observer Reports \(CMOR\)](#) and view the [Drought Impacts Reporter](#)

## Hydrologic Impacts

- Lower water levels are expected across many bodies of waters with winter freezing occurring. Reservoir levels will hold steady, however areas with minimal, localized rainfall could see diminishing levels.

## Agricultural Impacts

- USDA Wyoming Crop Progress and Condition Reports can be found [here](#)

## Fire Hazard Impacts

- Fire Hazards are low as temperatures are more seasonal and there has been adequate rain and snowfall. Windy conditions may bump some locations to moderate with cured fuels. ([Most recent Significant Wildland Fire Potential Outlook](#))

## Mitigation Actions

- Please refer to your municipality and/or water provider for mitigation information
- Clear debris from around structures to protect from potential wildfires



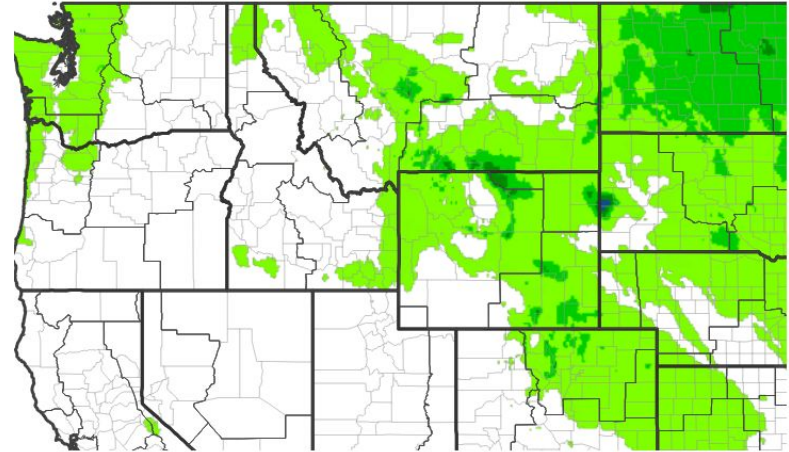


# Seven Day Precipitation Forecast

Precipitation Outlook Valid January 15th - January 22nd 2026

- A cold front will bring snow and some lower elevation rain to the area Thursday night into Friday morning. Accumulations will be very light
- The next chance for precipitation will be January 22nd or later.

## 7-Day Quantitative Precipitation Forecast for January 15, 2026-January 22, 2026



Predicted Inches of Precipitation



Source(s): National Weather Service Weather Prediction Center; image courtesy of Drought.gov

Last Updated: 01/15/26



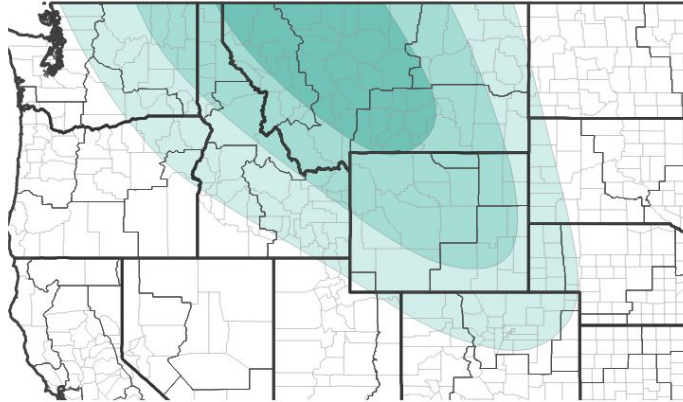


# Long-Range Outlooks

The latest monthly and seasonal outlooks can be found on the [CPC homepage](#)

- Probability of temperatures being below normal range from 33-50% for most of the state
- Temperatures for the southwest areas show equal chances, so climatology is the best forecast
- Below normal (33-50%) precipitation is indicated for the entire state

**Monthly Precipitation Outlook for January 1, 2026–January 31, 2026**



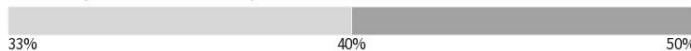
**Probability of Below-Normal Precipitation**



**Probability of Above-Normal Precipitation**

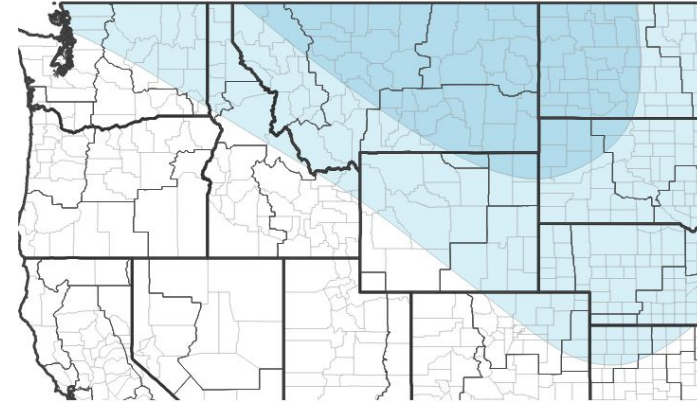


**Probability of Near-Normal Precipitation**



Source(s): Climate Prediction Center; image courtesy of Drought.gov Last Updated: 01/15/26

**Monthly Temperature Outlook for January 1, 2026–January 31, 2026**



**Probability of Below-Normal Temperatures**



**Probability of Above-Normal Temperatures**



**Probability of Near-Normal Temperatures**



Source(s): Climate Prediction Center; image courtesy of Drought.gov Last Updated: 01/15/26





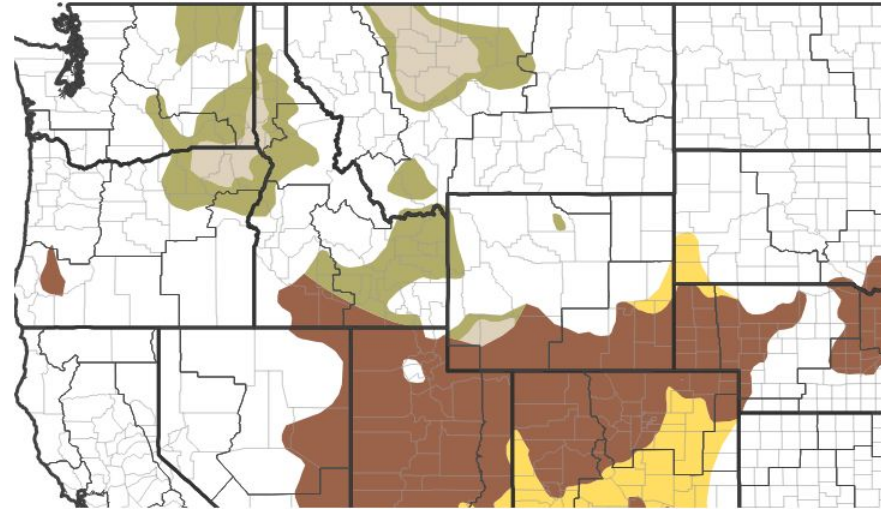
# Drought Outlook

The latest monthly and seasonal outlooks can be found on the [CPC homepage](#)

## Seasonal Outlook

- Drought conditions are expected to persist over Sweetwater County
- Drought conditions are expected to end across southern Sublette and western Teton counties
- There is no drought for the remainder of the state

## Seasonal (3-Month) Drought Outlook for January 15, 2026–April 30, 2026



Drought Is Predicted To...



Source(s): Climate Prediction Center; image courtesy of Drought.gov

Last Updated: 01/15/26

Links to the latest:

[Climate Prediction Center Monthly Drought Outlook](#)

[Climate Prediction Center Seasonal Drought Outlook](#)



National Oceanic and Atmospheric Administration  
U.S. Department of Commerce

National Weather Service  
Riverton, WY