

Drought Information Statement for Western & Central Wyoming

Valid February 5th, 2026

Issued By: National Weather Service Riverton, WY

Contact Information: nws.riverton@noaa.gov

- This product will be updated by March 6th, 2026 or sooner if drought conditions change significantly.
 - Please see all currently available products at <https://drought.gov/drought-information-statements>.
 - Please visit <https://www.weather.gov/riw/DroughtInformationStatement> for previous statements.
 - Please visit <https://www.drought.gov/drought-status-updates> for regional drought status updates.
-
- Severe (D2) conditions in Lincoln, Sweetwater and Uinta Counties.
 - Conditions have decreased in other counties with D0 much more widespread.



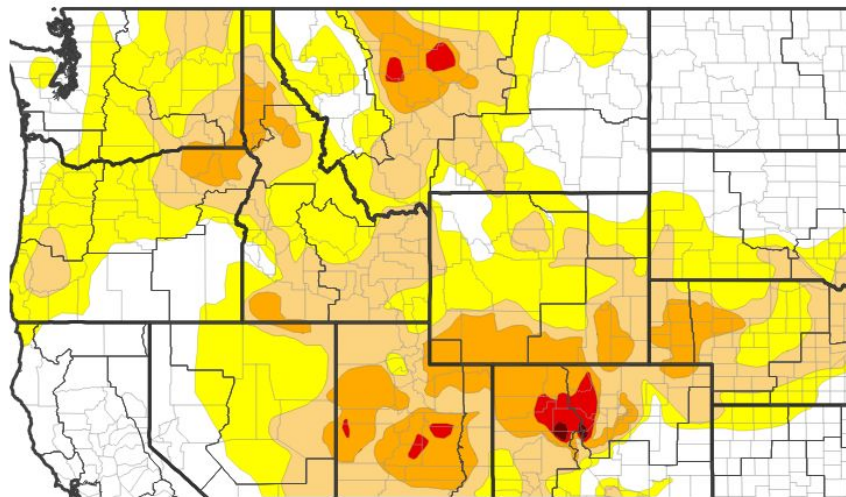


U.S. Drought Monitor

Link to the [latest U.S. Drought Monitor](#) for Western & Central Wyoming

- Drought intensity and Extent
 - **D4 (Exceptional Drought):** None occurring.
 - **D3 (Extreme Drought):** None occurring.
 - **D2 (Severe Drought):** Most of Sweetwater County, along with small portions of Lincoln and Uinta Counties.
 - **D1 (Moderate Drought):** Portions of Teton, Sweetwater, Lincoln, Fremont, Johnson, Natrona, Hot Springs, Washakie, and Big Horn Counties.
 - **D0: (Abnormally Dry):** The remaining counties with the exception of Park, eastern Teton and extreme northern Fremont.

U.S. Drought Monitor



U.S. Drought Monitor



Source(s): NDMC, NOAA, USDA; image courtesy of Drought.gov

Data Valid: 02/03/26



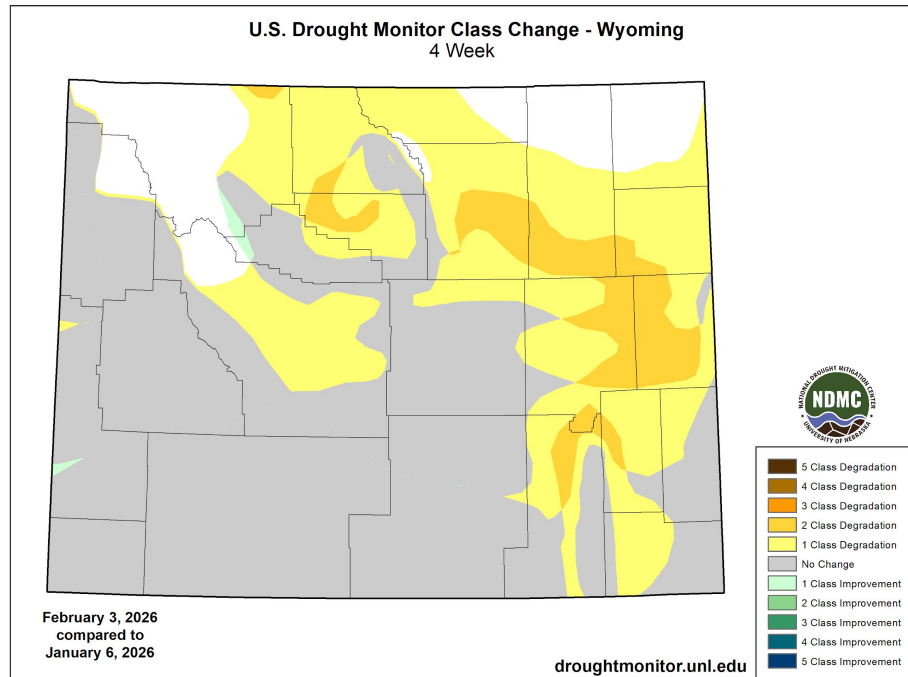


Recent Change in Drought Intensity

Link to the latest [4-week change map](#) for Western & Central Wyoming

- **Four Week Drought Monitor Class Change**

- **Drought Worsened:** Fremont, Hot Springs, Johnson, and Natrona counties as well as sections of Park, Hot Springs and Washakie counties.
 - **No Change:** Most of the area that didn't get worse, also did not change.
 - **Drought Improved:** only a tiny sliver of Park and Hot Springs counties
- January was quite dry, although not quite as windy. Only a couple of weak systems came through to drop precipitation, so worsening drought conditions were unavoidable.



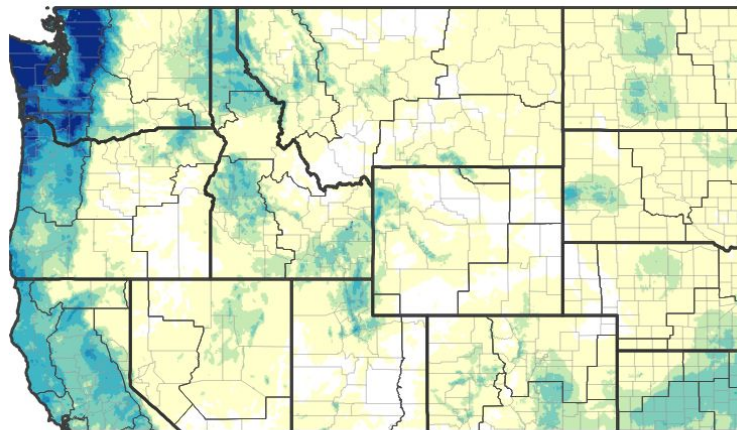


Precipitation

Other than two small spots, the entire state saw less than normal precipitation amounts.

Western WY has seen some precipitation, but still much below normal.

30-Day Precipitation Accumulations (Inches)



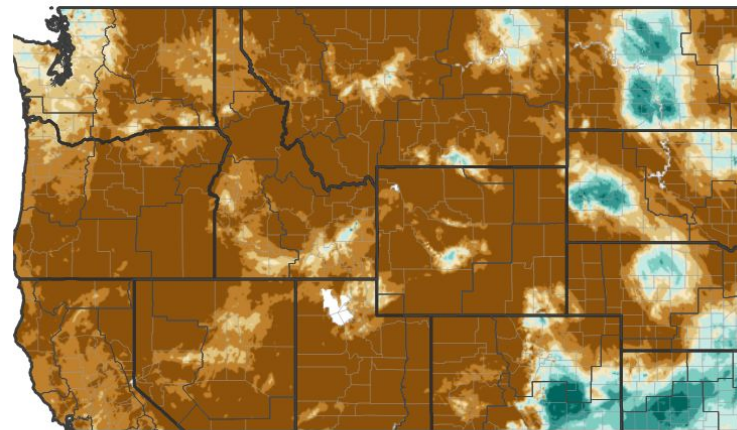
Inches of Precipitation



Source(s): National Weather Service Multi-Radar Multi-Sensor System; image courtesy of Drought.gov

Last Updated: 02/05/26

30-Day Percent of Normal Precipitation



Precipitation Shown as a Percentage of Normal Conditions



Source(s): National Weather Service Multi-Radar Multi-Sensor System; image courtesy of Drought.gov

Last Updated: 02/05/26



National Oceanic and
Atmospheric Administration
U.S. Department of Commerce

National Weather Service
Riverton, WY



Summary of Impacts

Links: See/submit [Condition Monitoring Observer Reports \(CMOR\)](#) and view the [Drought Impacts Reporter](#)

Hydrologic Impacts

- Lower water levels are expected across many bodies of waters with winter freezing occurring. Reservoir levels will hold steady, however areas with minimal, localized rainfall could see diminishing levels.

Agricultural Impacts

- USDA Wyoming Crop Progress and Condition Reports can be found [here](#)

Fire Hazard Impacts

- Fire Hazards are higher now with temperatures above normal and little to no rain and snowfall. Windy conditions may bump some locations to moderate with cured fuels. ([Most recent Significant Wildland Fire Potential Outlook](#))

Mitigation Actions

- Please refer to your municipality and/or water provider for mitigation information
- Clear debris from around structures to protect from potential wildfires



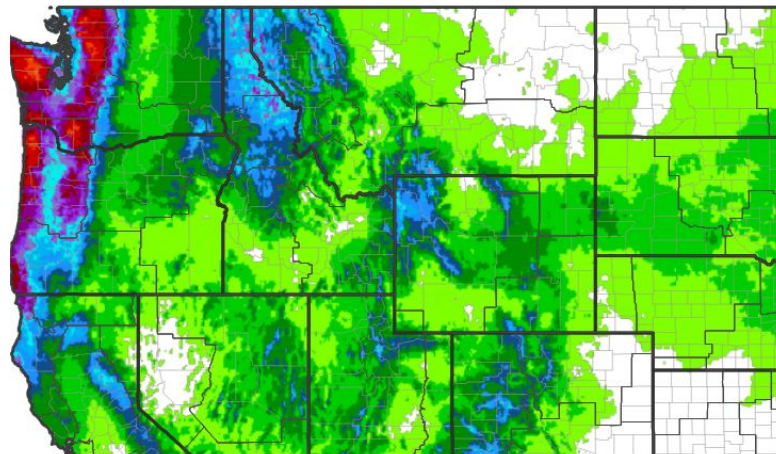


Seven Day Precipitation Forecast

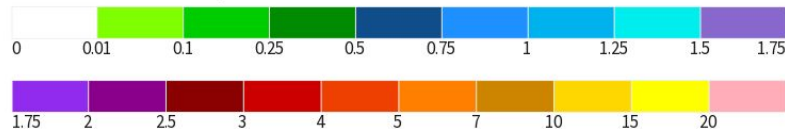
Precipitation Outlook Valid February 5th - February 12th 2026

- Most of the precipitation will be snow from a cold front moving into the west Sunday night into Monday.
- Central and eastern areas will get the snow Monday night through Wednesday.
- Prior to that, it will be dry and warmer than normal.

**7-Day Quantitative Precipitation Forecast for February 5,
2026-February 12, 2026**



Predicted Inches of Precipitation



Source(s): National Weather Service Weather Prediction Center; image
courtesy of Drought.gov

Last Updated: 02/05/26



**National Oceanic and
Atmospheric Administration**

U.S. Department of Commerce

National Weather Service
Riverton, WY

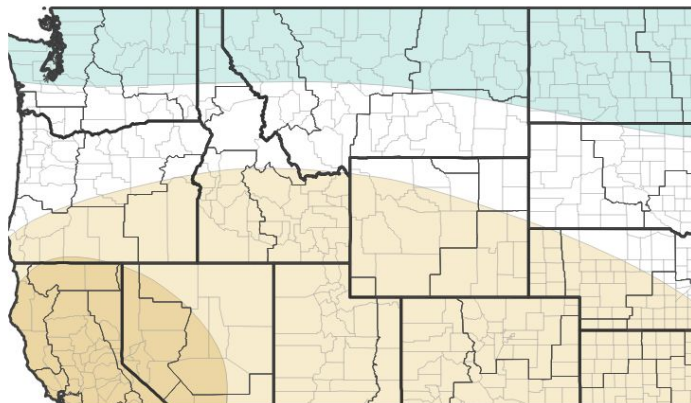


Long-Range Outlooks

The latest monthly and seasonal outlooks can be found on the [CPC homepage](#)

- Probability of precipitation being below normal range from 33-40% for most of the state
- A small section across the north will see equal chances of precipitation so climatology is the best forecast.
- Temperatures for a majority of the state show equal chances, so climatology is the best forecast
- Below normal (33-40%) temperatures are indicated for the southwest

Monthly Precipitation Outlook for February 1, 2026–February 28, 2026



Probability of Below-Normal Precipitation



Probability of Above-Normal Precipitation



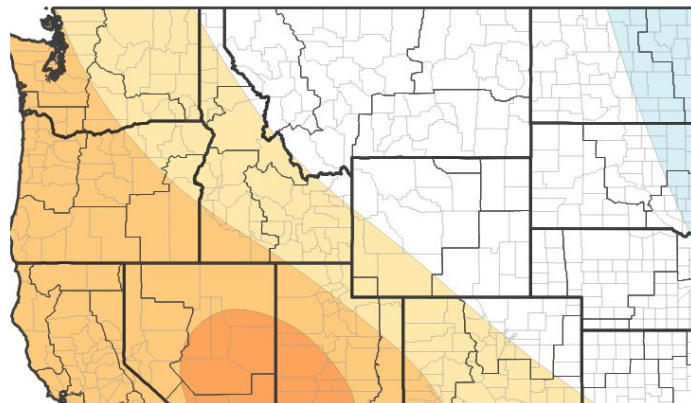
Probability of Near-Normal Precipitation



Source(s): Climate Prediction Center; image courtesy of Drought.gov

Last Updated: 01/31/26

Monthly Temperature Outlook for February 1, 2026–February 28, 2026



Probability of Below-Normal Temperatures



Probability of Above-Normal Temperatures



Probability of Near-Normal Temperatures



Source(s): Climate Prediction Center; image courtesy of Drought.gov

Last Updated: 01/31/26



**National Oceanic and
Atmospheric Administration**

U.S. Department of Commerce

National Weather Service
Riverton, WY



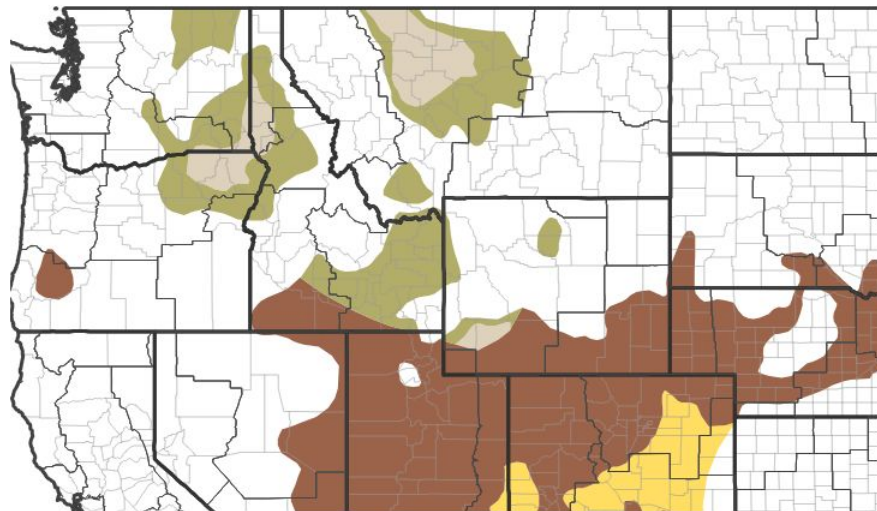
Drought Outlook

The latest monthly and seasonal outlooks can be found on the [CPC homepage](#)

Seasonal Outlook

- Drought conditions are expected to persist over Sweetwater County
- Drought conditions are expected to end or improve across southern Sublette County
- Drought conditions are expected to end across extreme western Teton County and for Big Horn County
- There is no drought for the remainder of the state

Seasonal (3-Month) Drought Outlook for January 31, 2026–April 30, 2026



Drought Is Predicted To...



Source(s): Climate Prediction Center; image courtesy of Drought.gov

Last Updated: 01/31/26

Links to the latest:

[Climate Prediction Center Monthly Drought Outlook](#)

[Climate Prediction Center Seasonal Drought Outlook](#)



National Oceanic and
Atmospheric Administration
U.S. Department of Commerce

National Weather Service
Riverton, WY