

Drought Information Statement for Western & Central Wyoming

Valid December 5th, 2025

Issued By: WFO Riverton, WY

Contact Information:

- This product will be updated by January 2nd, 2026 or sooner if drought conditions change significantly.
- Please see all currently available products at <https://drought.gov/drought-information-statements>.
- Please visit <https://www.weather.gov/riw/DroughtInformationStatement> for previous statements.
- Please visit <https://www.drought.gov/drought-status-updates> for regional drought status updates.

- Extreme (D3) drought conditions persist across portions of Sweetwater County.
- Severe (D2) conditions in Teton, Lincoln, and Sweetwater Counties along with small portions of Fremont, and Sublette Counties.
- Conditions have improved across small portions of Fremont, Lincoln, Sublette and Sweetwater counties



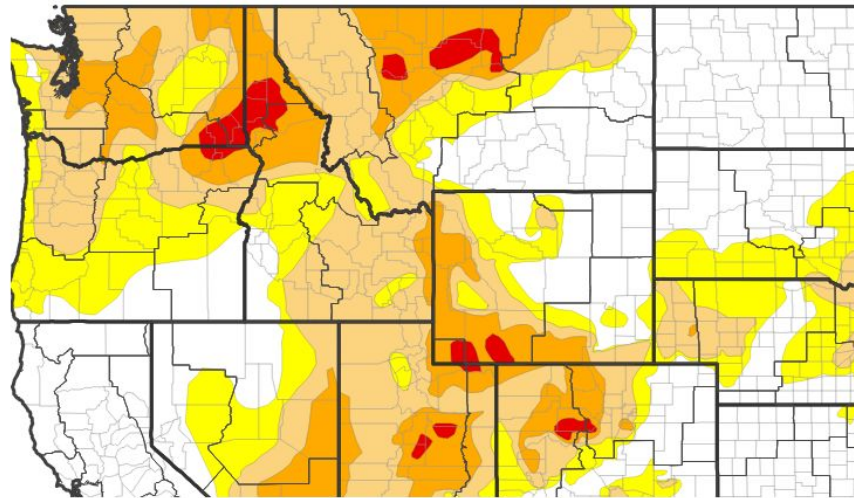


U.S. Drought Monitor

Link to the [latest U.S. Drought Monitor](#) for Wyoming

- Drought intensity and Extent
 - **D4 (Exceptional Drought):** None occurring.
 - **D3 (Extreme Drought):** Portions of Sweetwater County
 - **D2 (Severe Drought):** Most of Teton, Lincoln, Sweetwater Counties along with small portions of Fremont and Sublette Counties.
 - **D1 (Moderate Drought):** Portions of Teton, Sublette, Sweetwater, Fremont, and Big Horn Counties
 - **D0: (Abnormally Dry):** Parts of Park, Hot Springs, Washakie, Big Horn Counties, and small portions of Johnson and Sweetwater Counties

U.S. Drought Monitor



U.S. Drought Monitor



Source(s): NDMC, NOAA, USDA; image courtesy of Drought.gov

Data Valid: 12/02/25



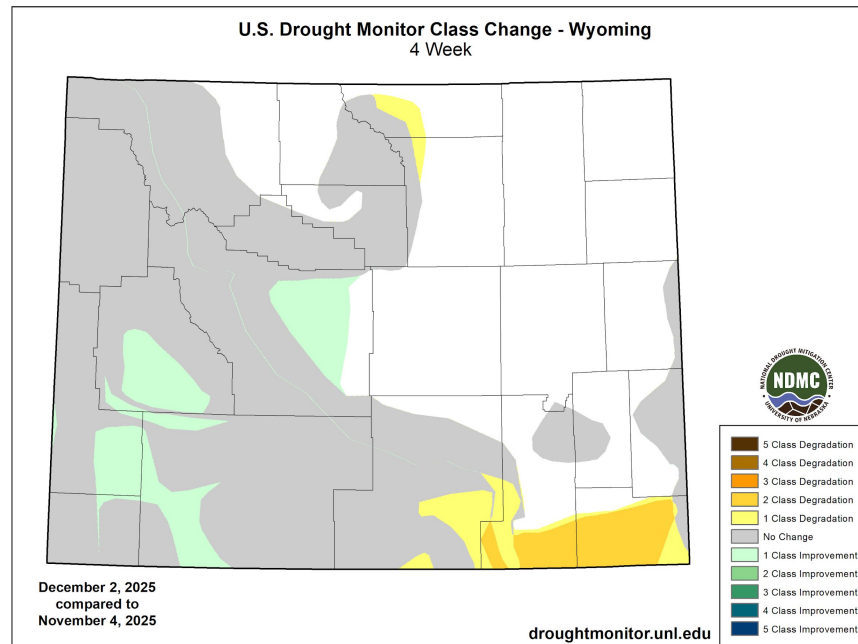


Recent Change in Drought Intensity

Link to the latest [4-week change map](#) for Wyoming

- **Four Week Drought Monitor Class Change**

- **Drought Worsened:** A sliver of Johnson County.
 - **No Change:** A majority of western and southern Wyoming
 - **Drought Improved:** Large portions of Fremont, Lincoln, Sweetwater and Sublette Counties.
 -
- November was fairly dry across Wyoming so little change in conditions. There were a couple of stronger storms that brought rain and snow to the areas with some improvement



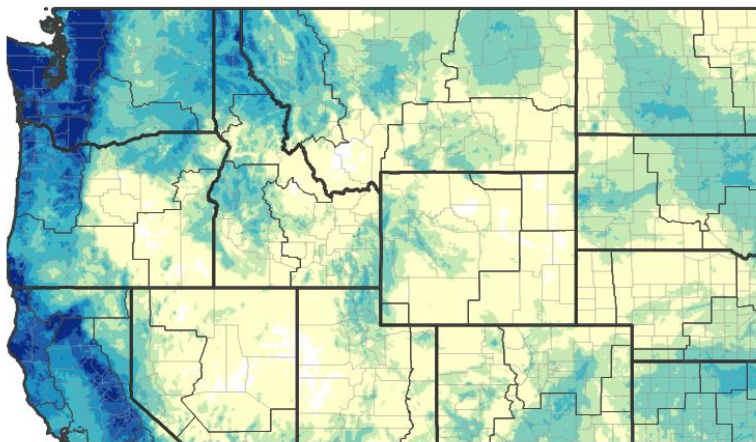


Precipitation

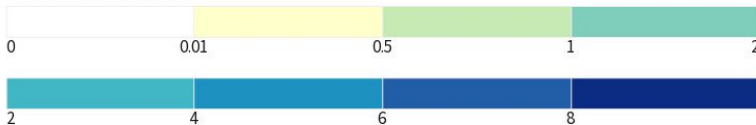
Most of the state saw less than normal precipitation amounts.

Central WY has seen a small surplus in precipitation. There were a couple of storms over the last two weeks with good rain amounts and some light snow amounts.

30-Day Precipitation Accumulations (Inches)



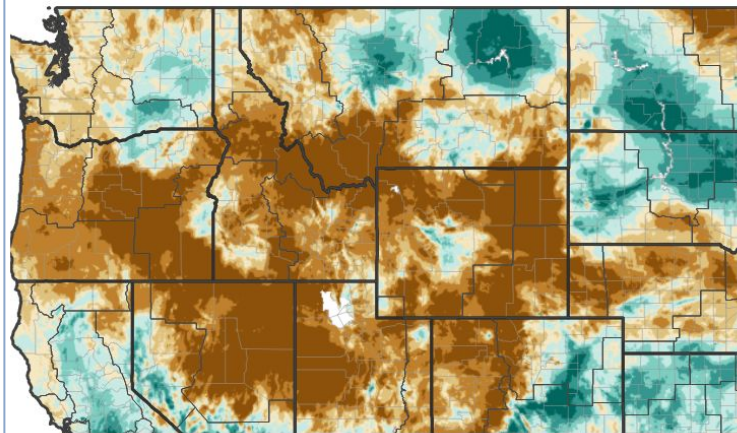
Inches of Precipitation



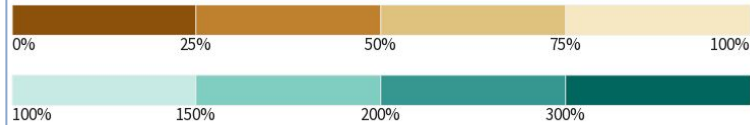
Source(s): National Weather Service Multi-Radar Multi-Sensor System; image courtesy of Drought.gov

Last Updated: 12/05/25

30-Day Percent of Normal Precipitation



Precipitation Shown as a Percentage of Normal Conditions



Source(s): National Weather Service Multi-Radar Multi-Sensor System; image courtesy of Drought.gov

Last Updated: 12/05/25



National Oceanic and
Atmospheric Administration

U.S. Department of Commerce

National Weather Service
Riverton, Wyoming



Summary of Impacts (graphics on following slides)

Links: See/submit [Condition Monitoring Observer Reports \(CMOR\)](#) and view the [Drought Impacts Reporter](#)

Hydrologic Impacts

- Lower water levels are expected across many bodies of waters with winter freezing occurring. Reservoir levels will hold steady, however areas with minimal, localized rainfall could see diminishing levels.

Agricultural Impacts

- USDA Wyoming Crop Progress and Condition Reports can be found [here](#)

Fire Hazard Impacts

- Fire Hazards are low as temperatures are more seasonal and there has been adequate rain and snowfall. Some locations are still borderline, mainly due to cured fuels and windy conditions. ([Most recent Significant Wildland Fire Potential Outlook](#))

Mitigation Actions

- Please refer to your municipality and/or water provider for mitigation information
- Clear debris from around structures to protect from potential wildfires



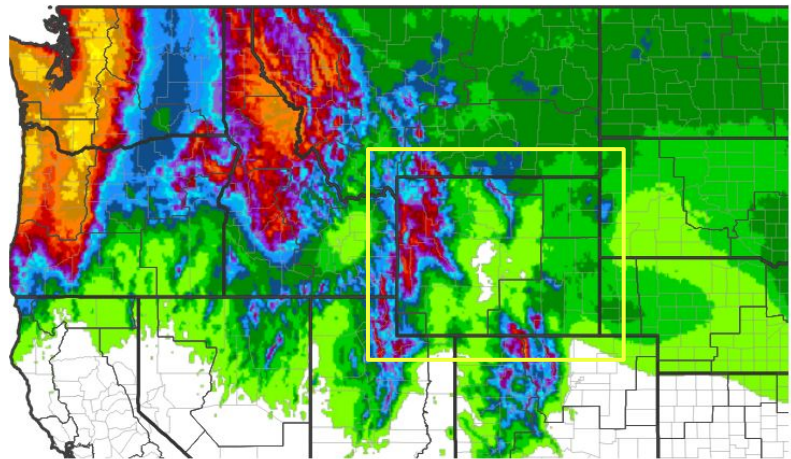


Seven-Day Precipitation Forecast

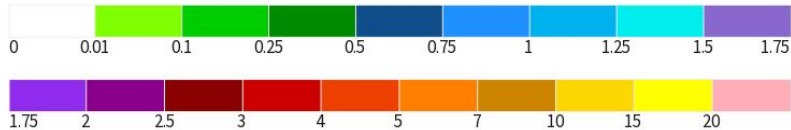
Precipitation Outlook Valid December 5th - December 12th 2025

- A cold front will bring widespread snow, heavy at times, to the west and to the Bighorn mountains. This will continue through Saturday
- The work week will see several weather systems move through the region bringing more chances of light snow to the west and over the Bighorn mountains

7-Day Quantitative Precipitation Forecast for December 5, 2025–December 12, 2025



Predicted Inches of Precipitation



Source(s): National Weather Service Weather Prediction Center; image courtesy of Drought.gov

Last Updated: 12/05/25





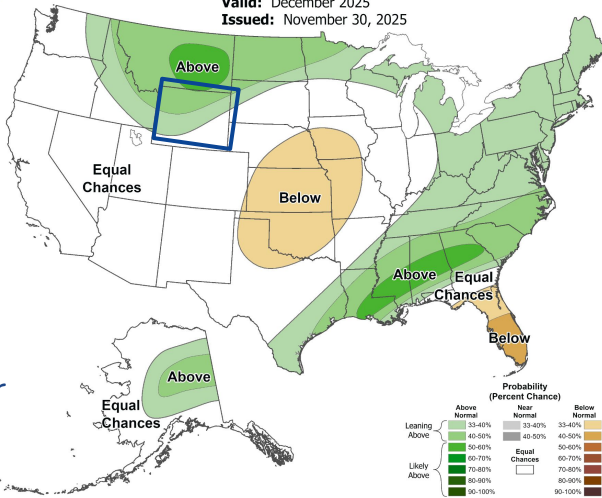
Long-Range Outlooks

The latest monthly and seasonal outlooks can be found on the [CPC homepage](#)

- Probability of temperatures being above normal range from 33-50% for southwest half.
- Northeast half of Wyoming shows equal chances, so climatology is the best forecast for temperatures
- Above normal (33-50%) precipitation is indicated for the northwest two-thirds
- Equal chances across the southeast, so climatology is the best forecast.

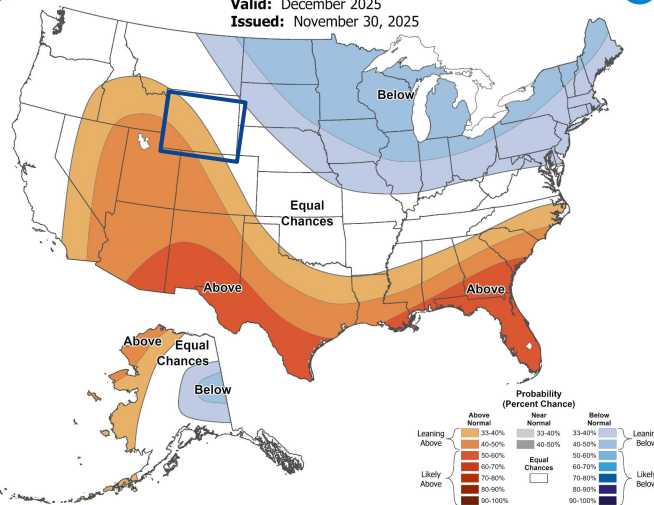
Monthly Precipitation Outlook

Valid: December 2025
Issued: November 30, 2025



Monthly Temperature Outlook

Valid: December 2025
Issued: November 30, 2025





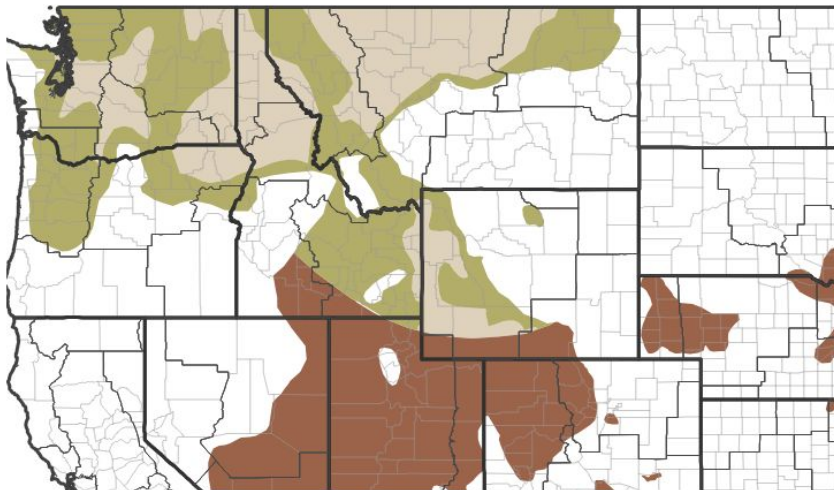
Drought Outlook

The latest monthly and seasonal outlooks can be found on the [CPC homepage](#)

Seasonal Outlook

- Drought conditions are expected to persist over a small section of southern Sweetwater County
- Drought conditions are expected to end across portions of central WY such as Fremont, sublette, Park and portions of Teton and Bighorn counties
- There will be improvements across much of the western counties

1-Month Drought Outlook for December 1, 2025–December 31, 2025



Drought Is Predicted To...



Source(s): Climate Prediction Center; image courtesy of Drought.gov

Last Updated: 11/30/25

Links to the latest:

[Climate Prediction Center Monthly Drought Outlook](#)

[Climate Prediction Center Seasonal Drought Outlook](#)



National Oceanic and
Atmospheric Administration
U.S. Department of Commerce

National Weather Service
Riverton, Wyoming