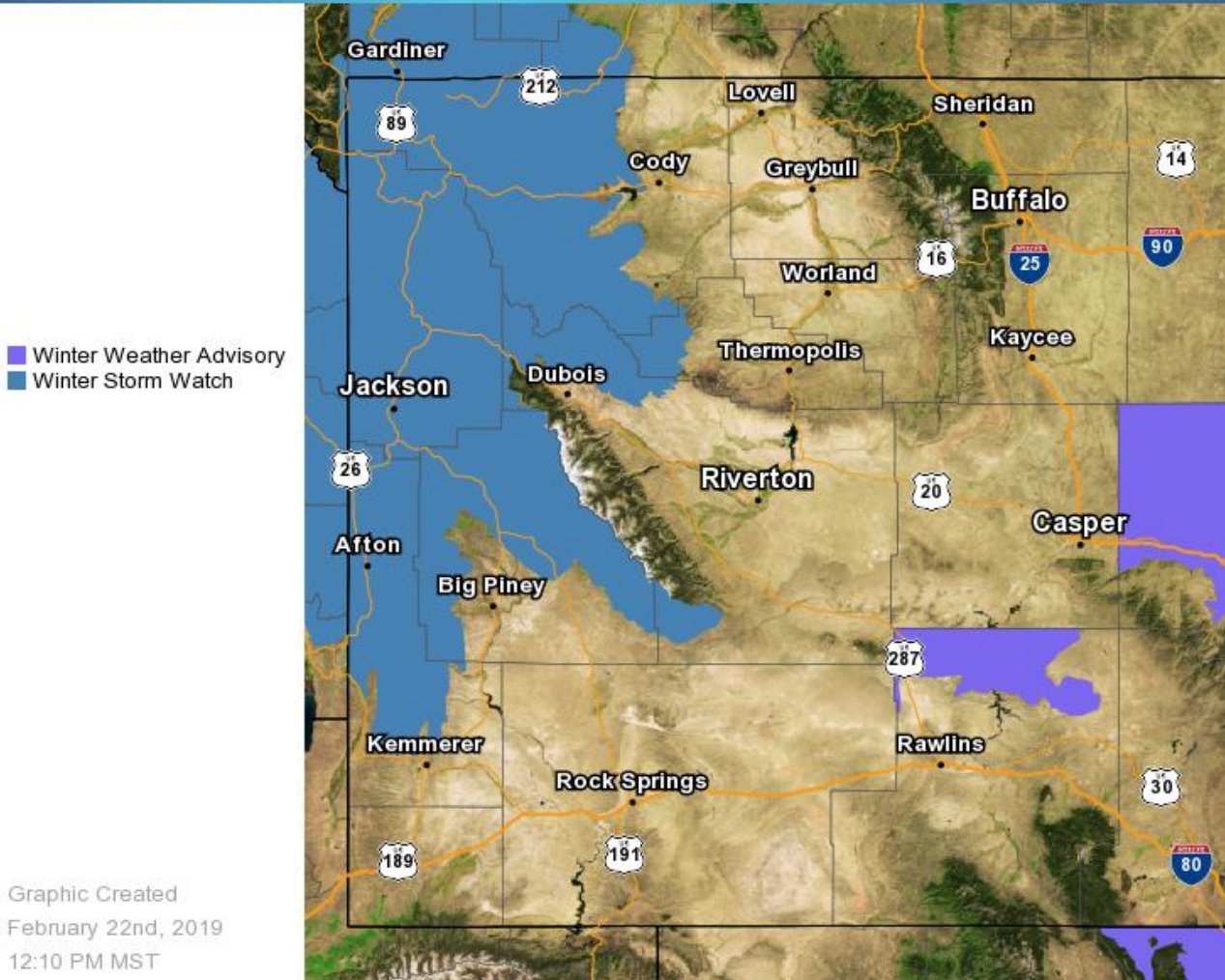




Western Winter Storm Sat. night thru Tue.

Current Watches, Warnings, and Advisories

National Weather Service



Weather Message of the Day:

- Light snow is possible Saturday morning then will become heavier Saturday night through Tuesday across the western areas.
- Winds will remain gusty in the mountains throughout this period with the highest winds expected Sunday night into Monday.
- Blowing snow and snow drifts could become a problem Monday as winds increase in the lower elevations.



Snowfall Forecast Saturday and Saturday night

Key Points



Hazards: Light snow becoming heavy snow. Light snow starting Saturday morning, heavy snow possible after 6 PM. Strong winds in the mountains.



Areas Impacted: Western Mountains and Valleys



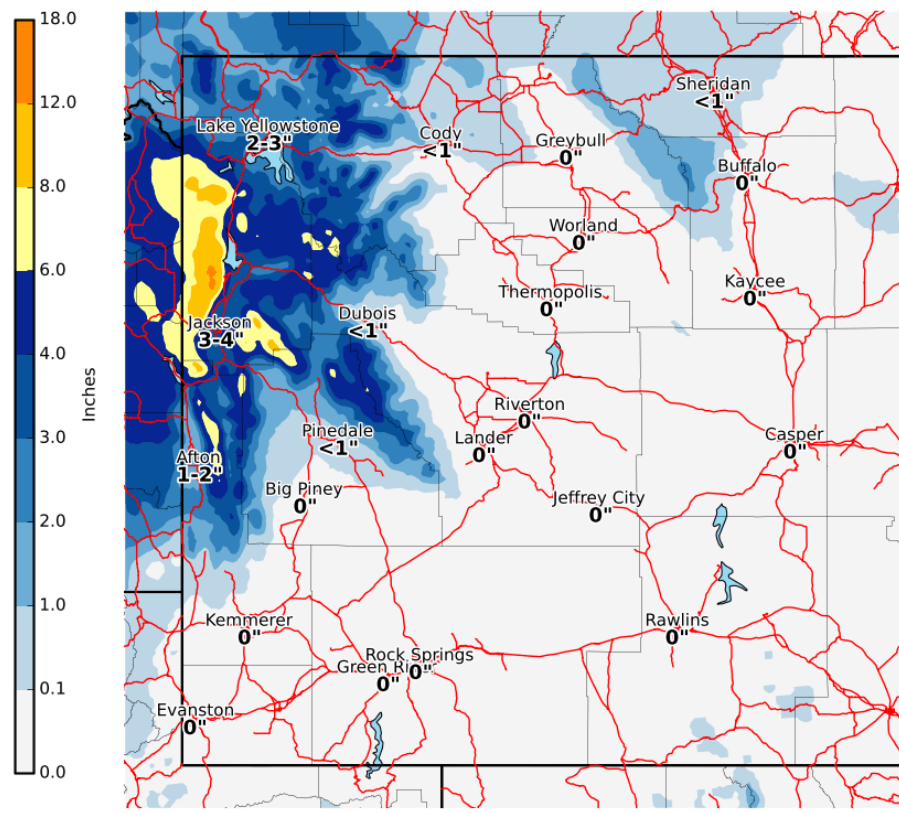
Timing & Duration: Saturday and Saturday night



Impacts: Travel could be very difficult to impossible. Patchy blowing snow could significantly reduce visibility.

Expected Snowfall - Saturday

Valid: 02/23/2019 05:00 AM - 02/24/2019 05:00 AM MST



National Weather Service
Riverton Wyoming
02/22/2019 11:54 AM MST

Follow Us:
weather.gov/Riverton



Snowfall Forecast Sunday and Sunday night

Key Points



Hazards: Continuing snow and blowing snow. Steady moderate to heavy snow through the day. Winds will become gusty in the lower elevations Sunday afternoon.



Areas Impacted: Western Mountains and Valleys

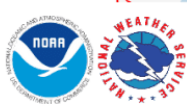
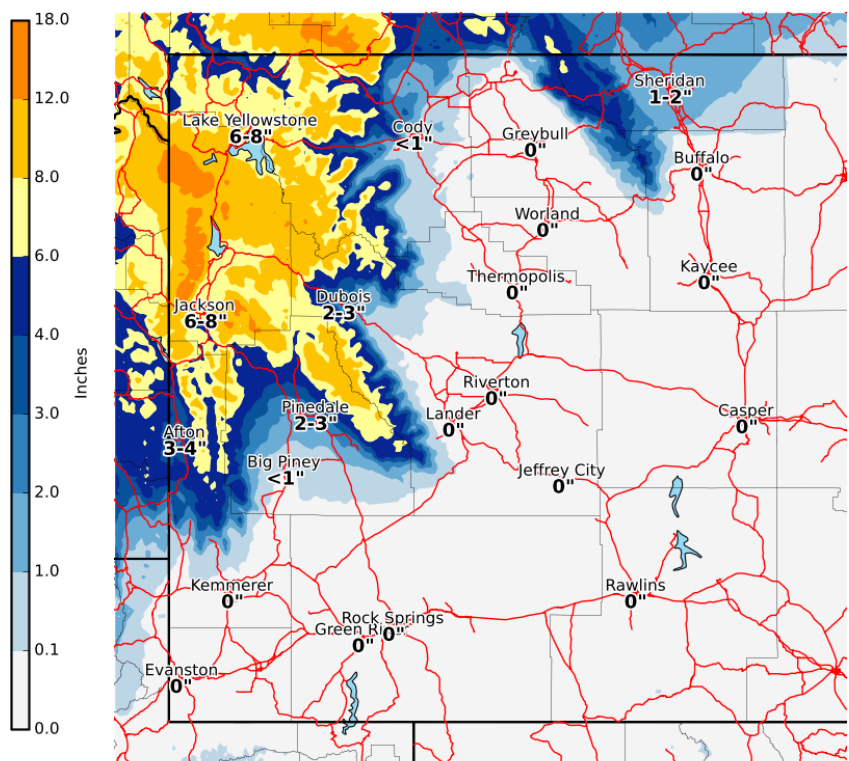


Timing & Duration: Sunday and Sunday night



Impacts: Travel could be very difficult to impossible. Patchy blowing snow could significantly reduce visibility. Wind chills could be below to well below zero.

Expected Snowfall - Sunday
Valid: 02/24/2019 05:00 AM - 02/25/2019 05:00 AM MST



National Weather Service
Riverton Wyoming
02/22/2019 12:22 PM MST

Follow Us:
weather.gov/Riverton

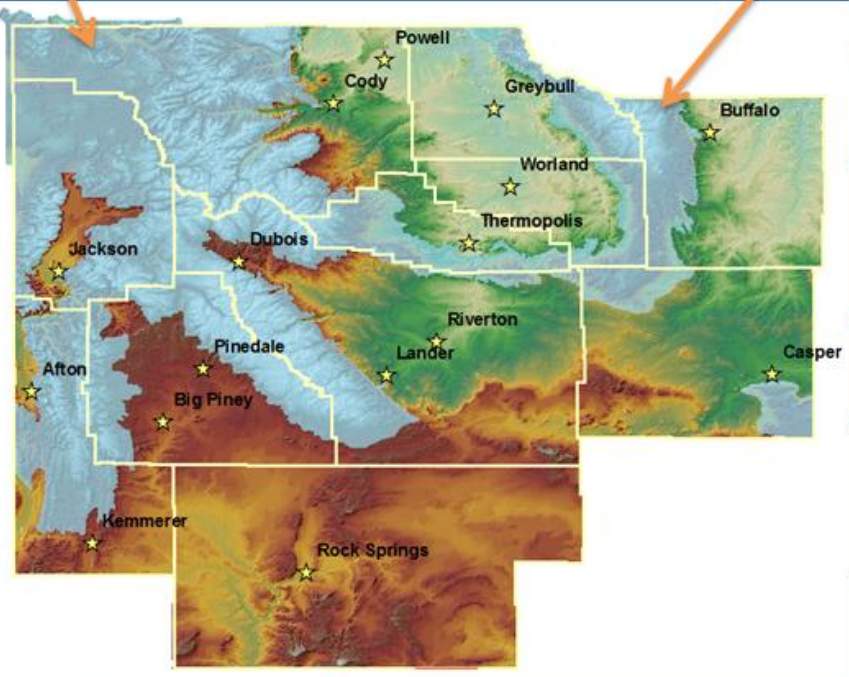


Winter Terminology



NWS Riverton Elevation Breakdown

Blue Areas Designated Mountain Areas



Winter Storm WATCH

Risk of hazardous winter weather is possible in the near future.

Mountains – Possible 12+”
Lower Elevations – Possible 6+”

Winter Storm WARNING

Hazardous winter weather is occurring, imminent or likely.

Mountains – 12+”
Lower Elevations – 6+”

Winter Weather ADVISORY

Similar to a Winter Storm Warning, but less serious.

Mountains – 6 to 12”
Lower Elevations – 3 to 6”

Blizzard Warning

Snow and/or Blowing Snow reducing visibility to $\leq \frac{1}{4}$ mile with winds ≥ 35 mph for ≥ 3 hours

Winter Resources

- [Winter Safety Information](#)
- [WYDOT](#)
- [Bridger Teton Avalanche Center](#)

@NWSRiverton

weather.gov/riw
1-800-211-1448

NWS Riverton



Building a Weather-Ready Nation