

Decision Support Briefing

September 26, 2024
1:09 PM



Southeast River Forecast Center



National Oceanic and
Atmospheric Administration
U.S. Department of Commerce

National Weather Service
Southeast River Forecast Center



Helene Causing Flooding in the Southeast

September 26, 2024
1:09 PM

Southeast River Forecast Center

Decision Support Briefing #3

→ As of 1:00 PM Thursday, September 26th, 2024

NEW Important Updates

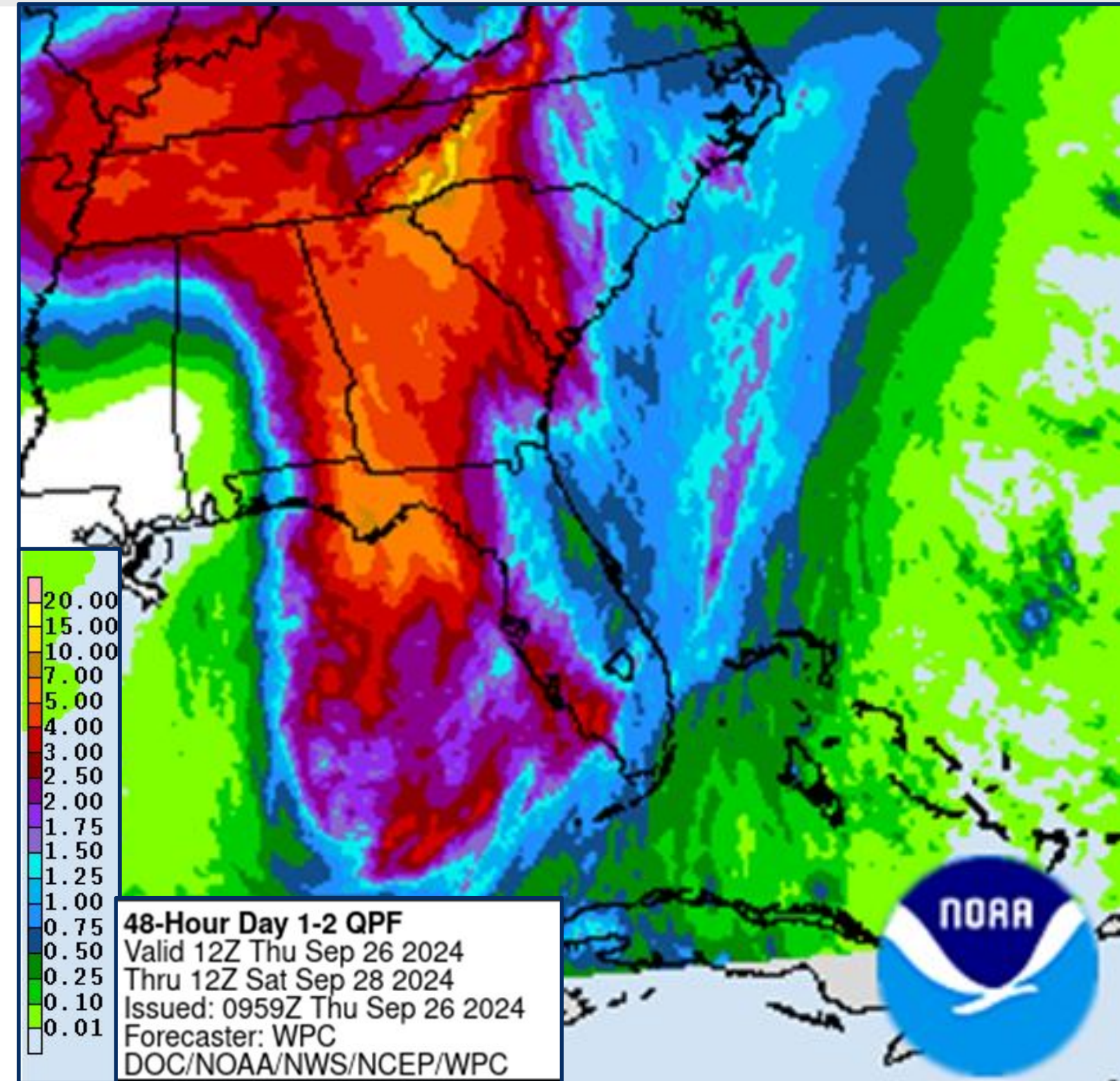
- **Widespread heavy rainfall** ahead of Helene has fallen through much of Georgia, SE Alabama and the western Carolinas.
- Overall, storm total predictions of rainfall have increased.

Key Messages

- Hurricane Helene has brought widespread heavy rain that will continue through Friday to portions of the Southeast, including the Gulf coast of Florida, eastern Alabama, most of Georgia, and the Appalachian regions of the Carolinas into Virginia.
- Including the last 24 hours **and** forecasted rainfall, expect totals of 6 to 12 inches, with isolated amounts around 20 inches with this storm.
- **Minor** and **moderate** river flooding is expected in these locations and scattered **major** river flooding is possible.
 - The areas of greatest concern are the Big Bend area of Florida, through central Georgia (including metro Atlanta), and along the Appalachians.



Make sure to keep up with the latest forecast and have multiple ways to receive warnings!



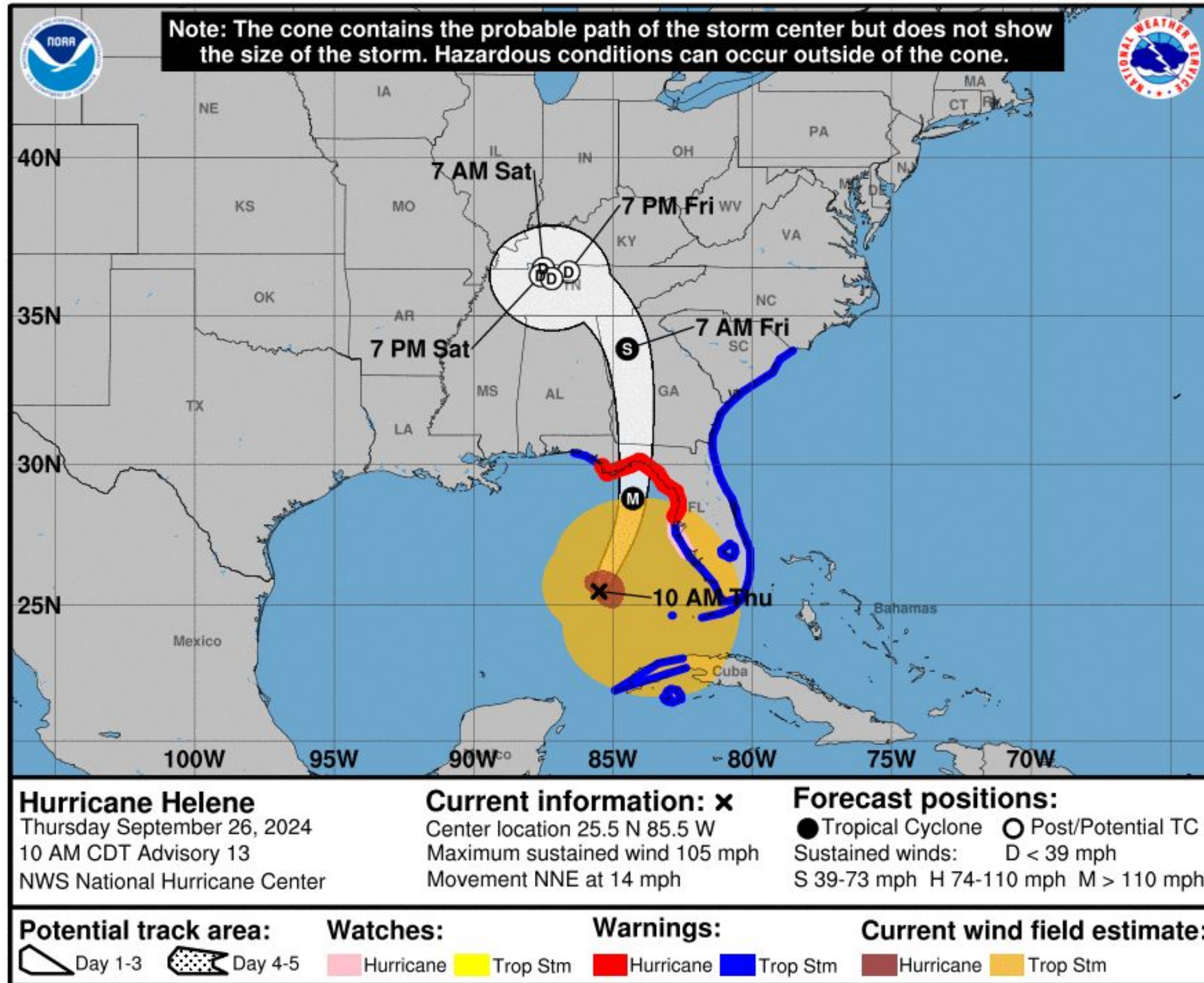
National Oceanic and Atmospheric Administration
U.S. Department of Commerce

National Weather Service
Southeast River Forecast Center



Latest National Hurricane Center Forecast

September 26, 2024
1:09 PM



- Helene is currently a category 2 hurricane that is expected to intensify into a major (Cat 3 or greater) storm during the day today.
- It will continue to bring heavy rain to the region through Friday as it quickly moves through the Southeast.
- This system is large, so impacts, including the heavy rain, will extend well beyond the center of the storm.



For hazards associated with this storm outside of river flooding, including storm surge, winds, and severe weather, refer to the National Hurricane Center or your local NWS Weather Forecast Office.



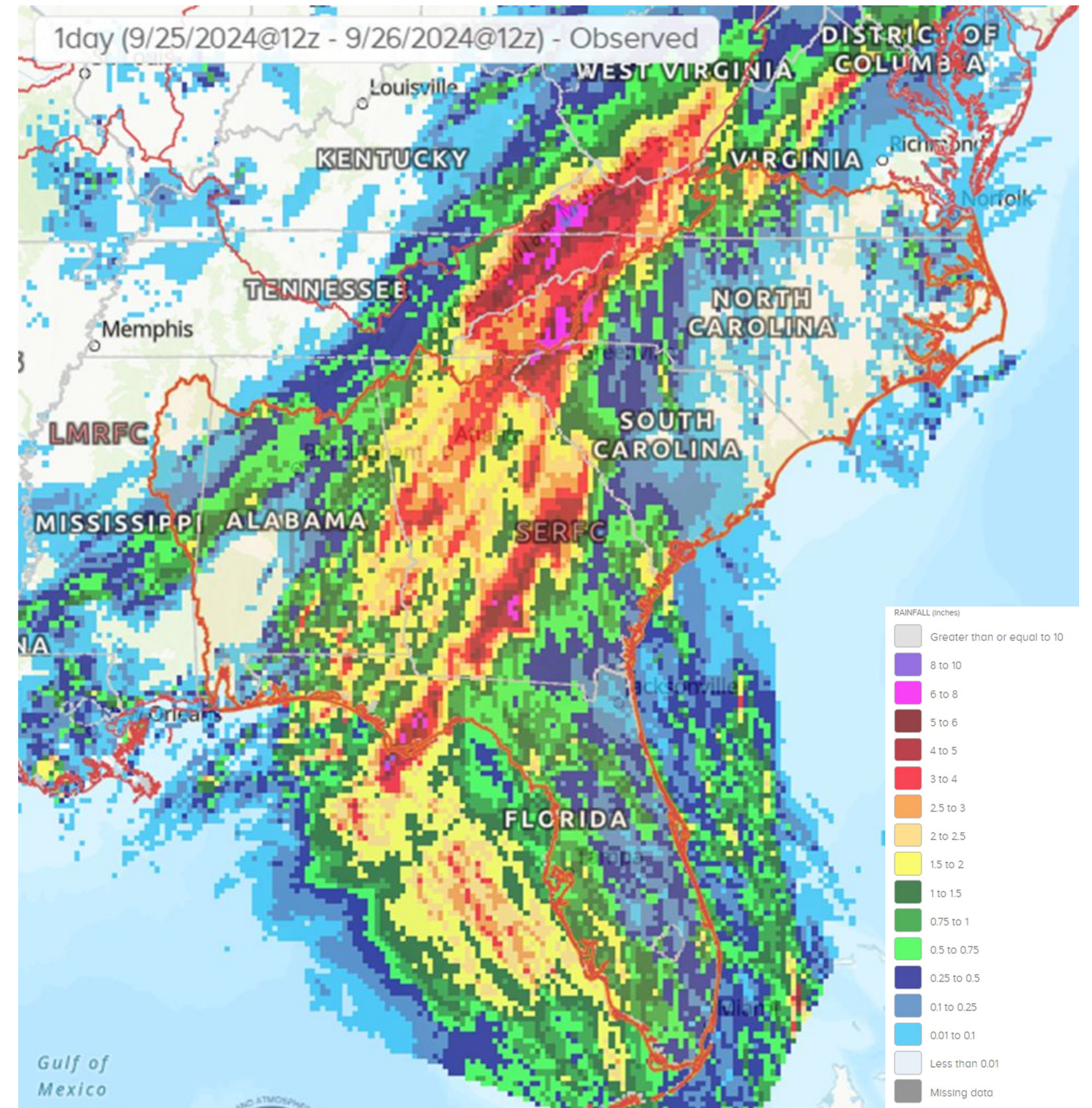
Past 24-hour Rainfall

September 26, 2024
1:09 PM

- This graphics shows the last 24 hours ahead of Hurricane Helene as of 8 am EDT.
- Isolated totals in the 5 to 7 inch rain totals were observed along the heaviest bands in Georgia and along the Appalachian Mountains.



For hazards associated with this storm outside of river flooding, including storm surge, winds, and severe weather, refer to the National Hurricane Center or your local NWS Weather Forecast Office.

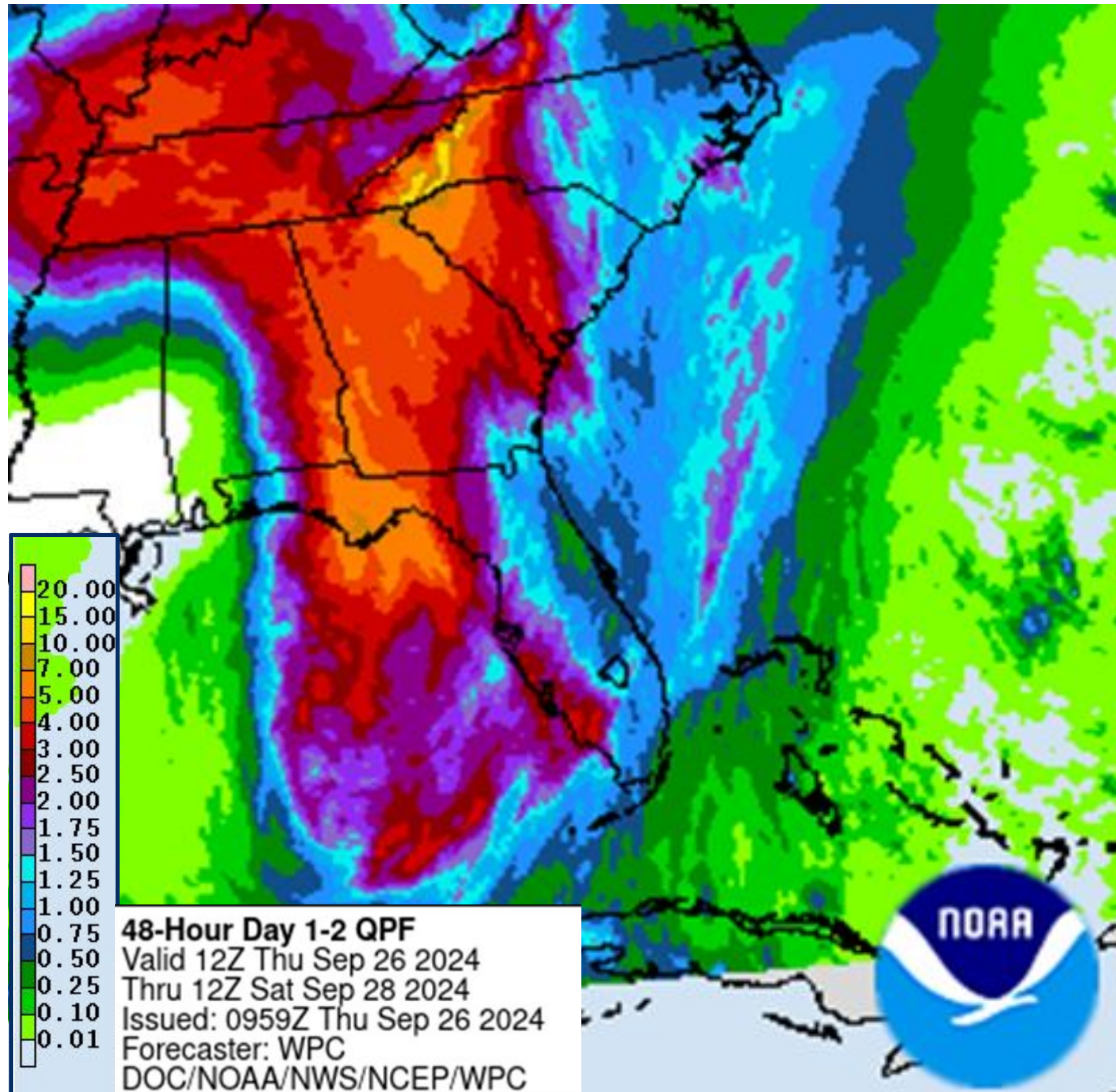




Forecast Rainfall and Impacts

September 26, 2024
1:09 PM

Significant River Flooding Expected



- Forecast storm total rainfall from Hurricane Helene range from 6 to 12 inches, with isolated amounts around 20 inches. These numbers include rain that has already fallen.
 - The highest amounts are expected near the Big Bend area of Florida, through Georgia, and into the Appalachians.
 - The greatest concern for significant river flooding is in these areas.
- Most of this rain is expected to fall through Friday.
- A frontal boundary located from Pensacola along the AL/GA border and into the Appalachians was the focus for rain ahead of Helene.
- Rain directly associated with Helene will impact the area today through Friday morning as it treks north.
 - The rain over the last 24 hours has wet the ground ahead of rain that is expected in the coming day.
 - **This will likely worsen the impacts in and around Helene's path**



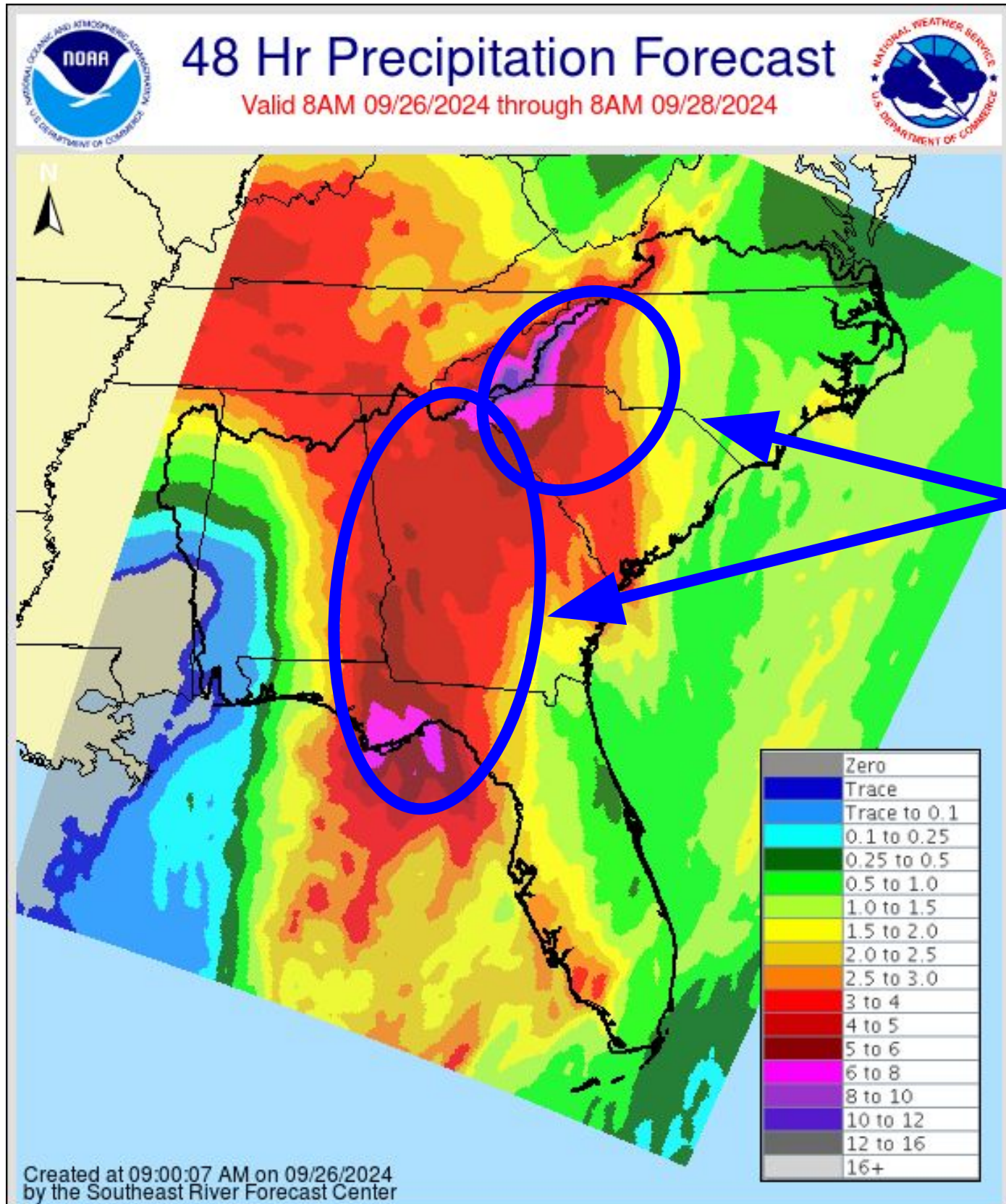
Confidence is high that this storm will cause significant river flooding.



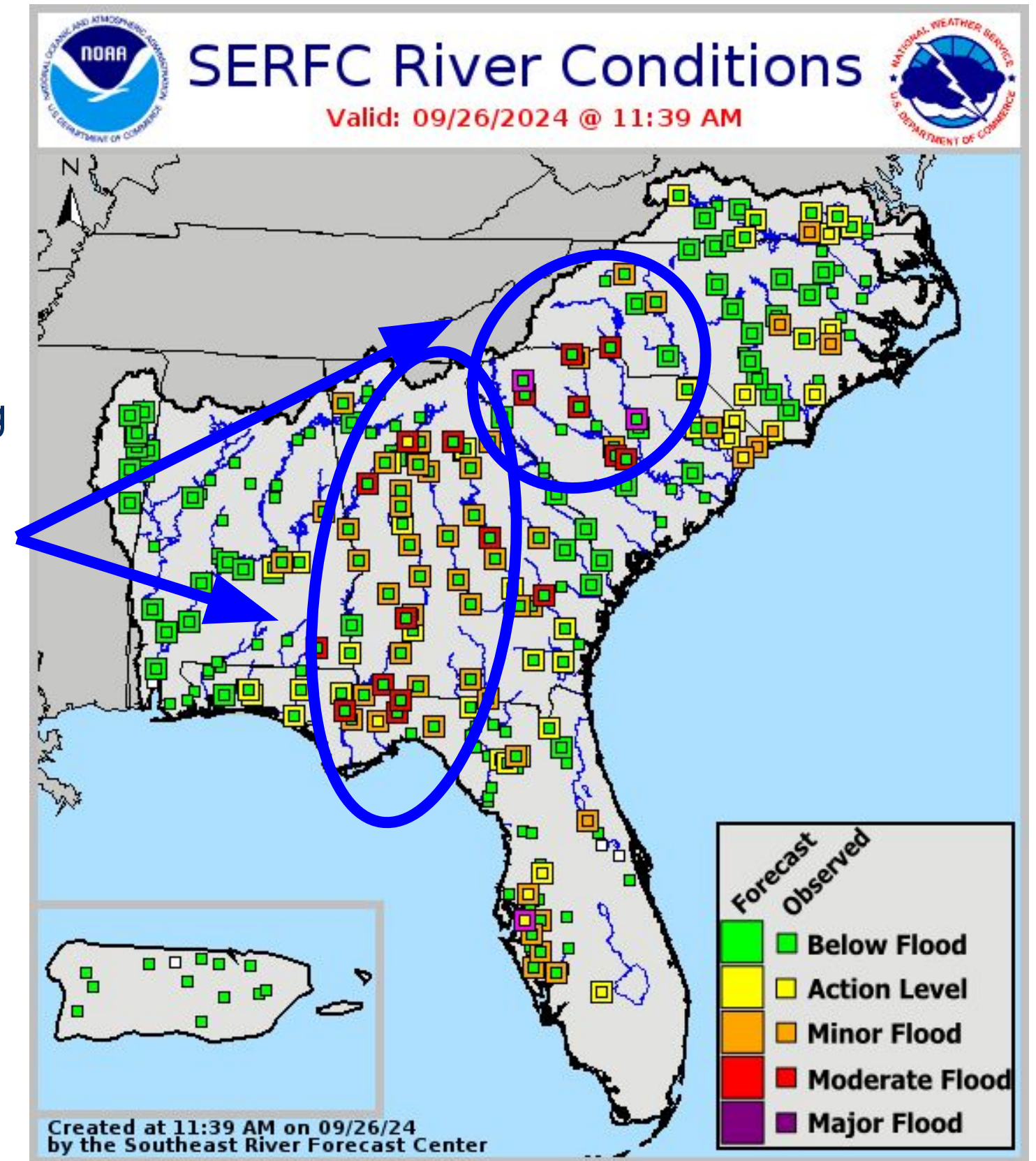


Forecast Rainfall and Impacts

September 26, 2024
1:09 PM



Widespread **minor** and **moderate** river flooding is expected in these locations. Scattered **major** flooding is still possible.





SERFC Operational Status

September 26, 2024
1:09 PM

24 Hour Operations

SERFC will be in 24 hour ops until further notice.



Latest river stages and forecasts are able to be viewed on our [webpage](#).



Please send all operational correspondence to our email or call the office directly.





Contact and Next Briefing Information

September 26, 2024
1:09 PM

Southeast River Forecast Center



Briefing Webpage

→ http://www.weather.gov/media/serfc/alert/helene_0925.pdf



Next Briefing

→ Tomorrow, September 27th



Disclaimer

- Information contained in this briefing is time-sensitive
- These slides are intended for your use. Please feel free to share these with others. If you have any questions please email us or contact your local NWS Weather Forecast Office.
- **Remember:** SERFC briefings cover freshwater flooding. For information on coastal and tidal flooding, flash floods, winds, and severe weather risks, please contact your local Weather Forecast Office.



Contact Information

Web

→ weather.gov/serfc

Phone

→ 770-486-0028

Email

→ sr-alr.rivers@noaa.gov

Facebook

→ <https://www.facebook.com/NWS.SERFC/>

Twitter (X)

→ @NWSSERFC

