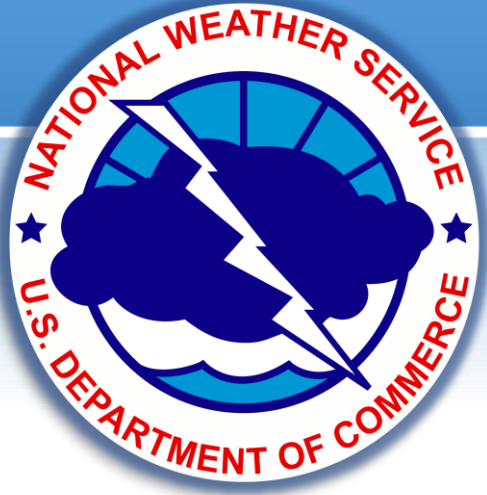


Decision Support Briefing

Southeast River Forecast Center



Hydrologic Vulnerability Assessment



Issued:

Friday, December 20, 2019



Weather Ready Nation



NWSSERFC



@NWSSERFC

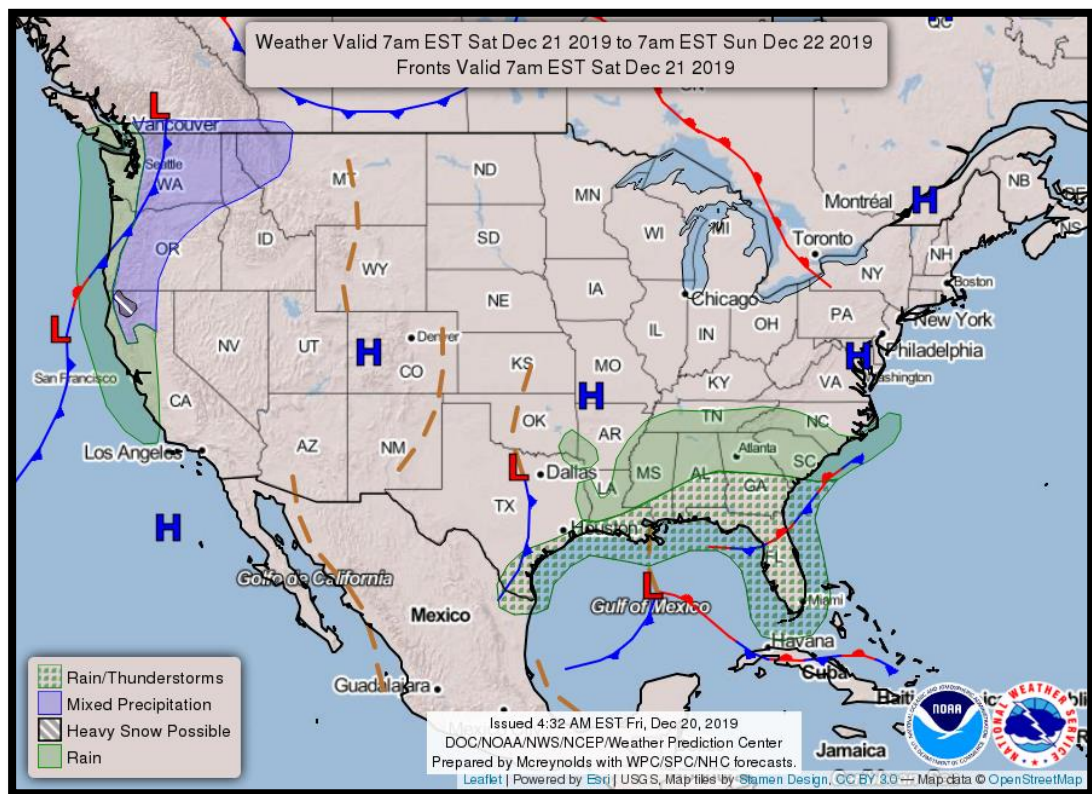


Key Points

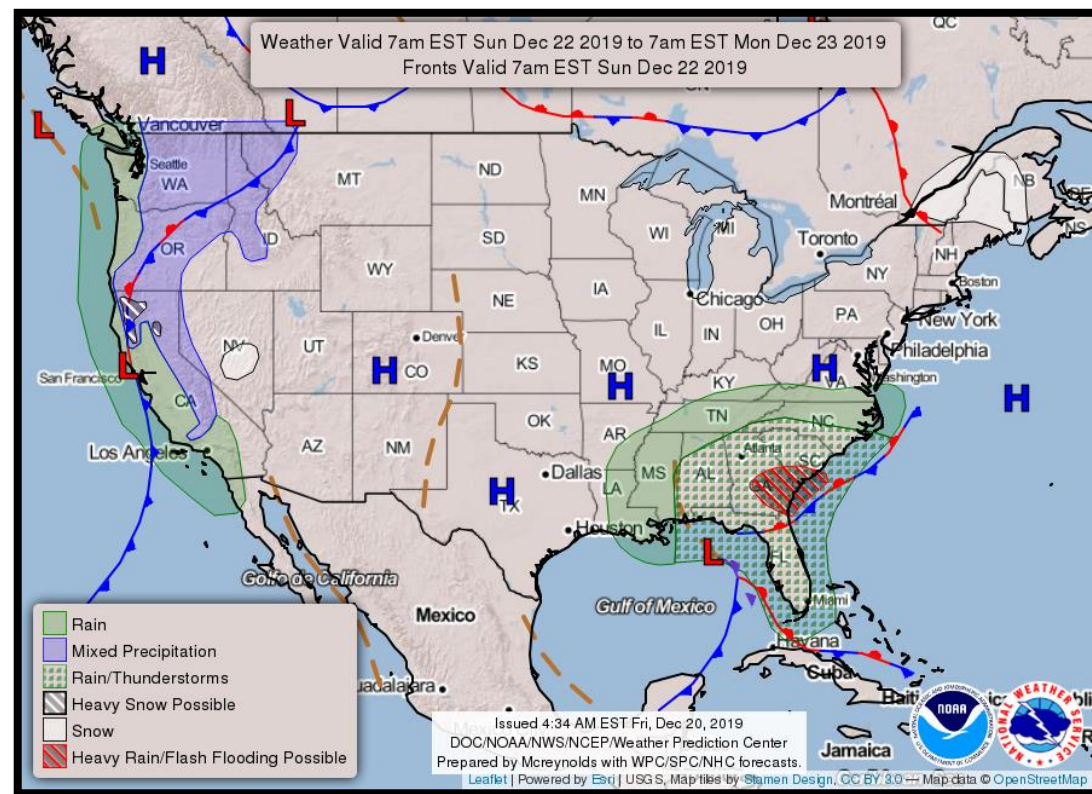
- **Low pressure will move across the Southeast through this weekend.**
- **Rainfall amounts of 3 to 5 inches could bring widespread minor river flooding to parts of the Southeast region.**



Weather Forecast Maps



Saturday

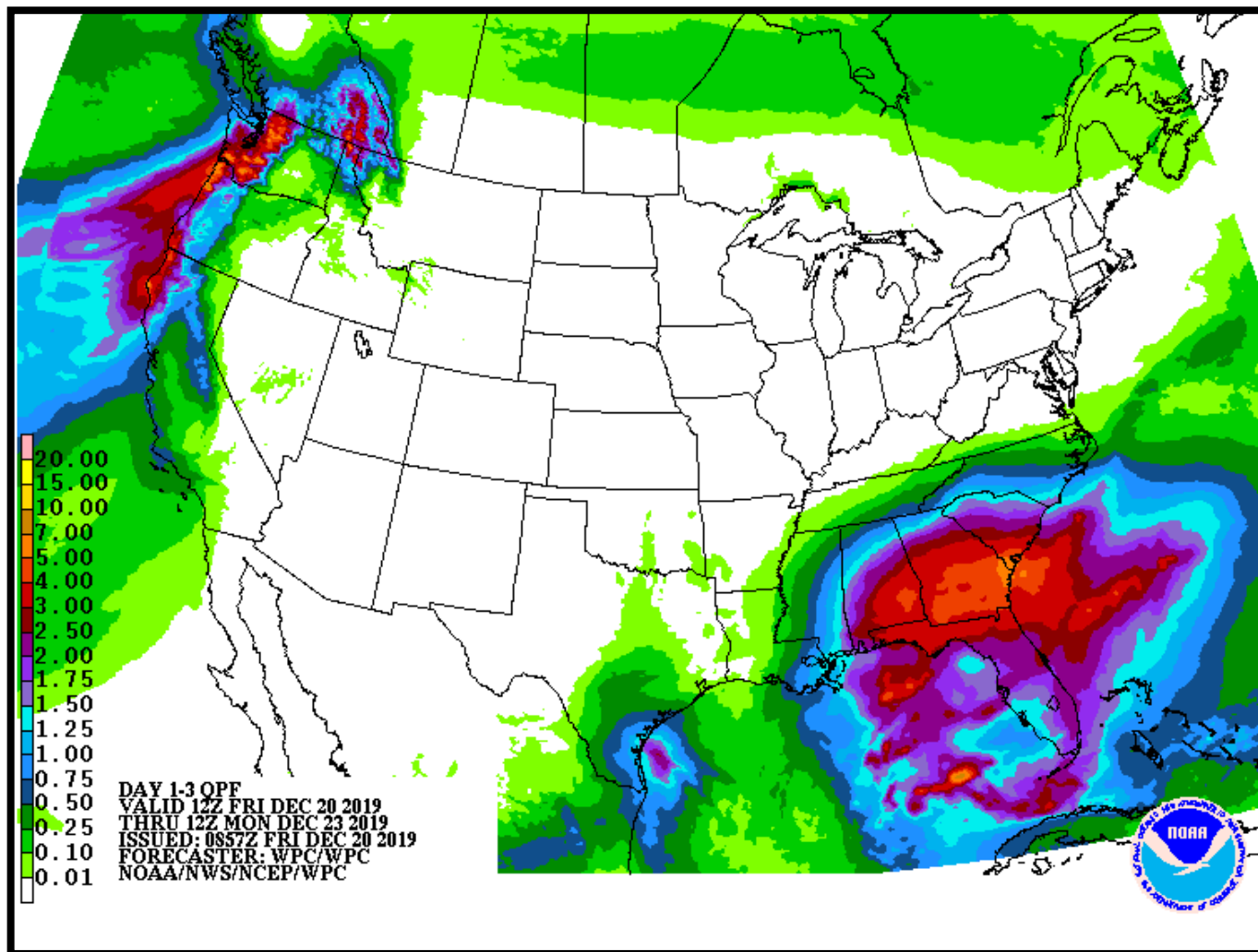


Sunday

An area of low pressure in the Gulf of Mexico will spread rainfall across parts of the Southeast from late Saturday through early Monday.



3-Day Precipitation Forecast



Rainfall amounts of 3 to 5 inches are expected across northern sections of Florida as well as parts of Alabama, Georgia and into South Carolina.

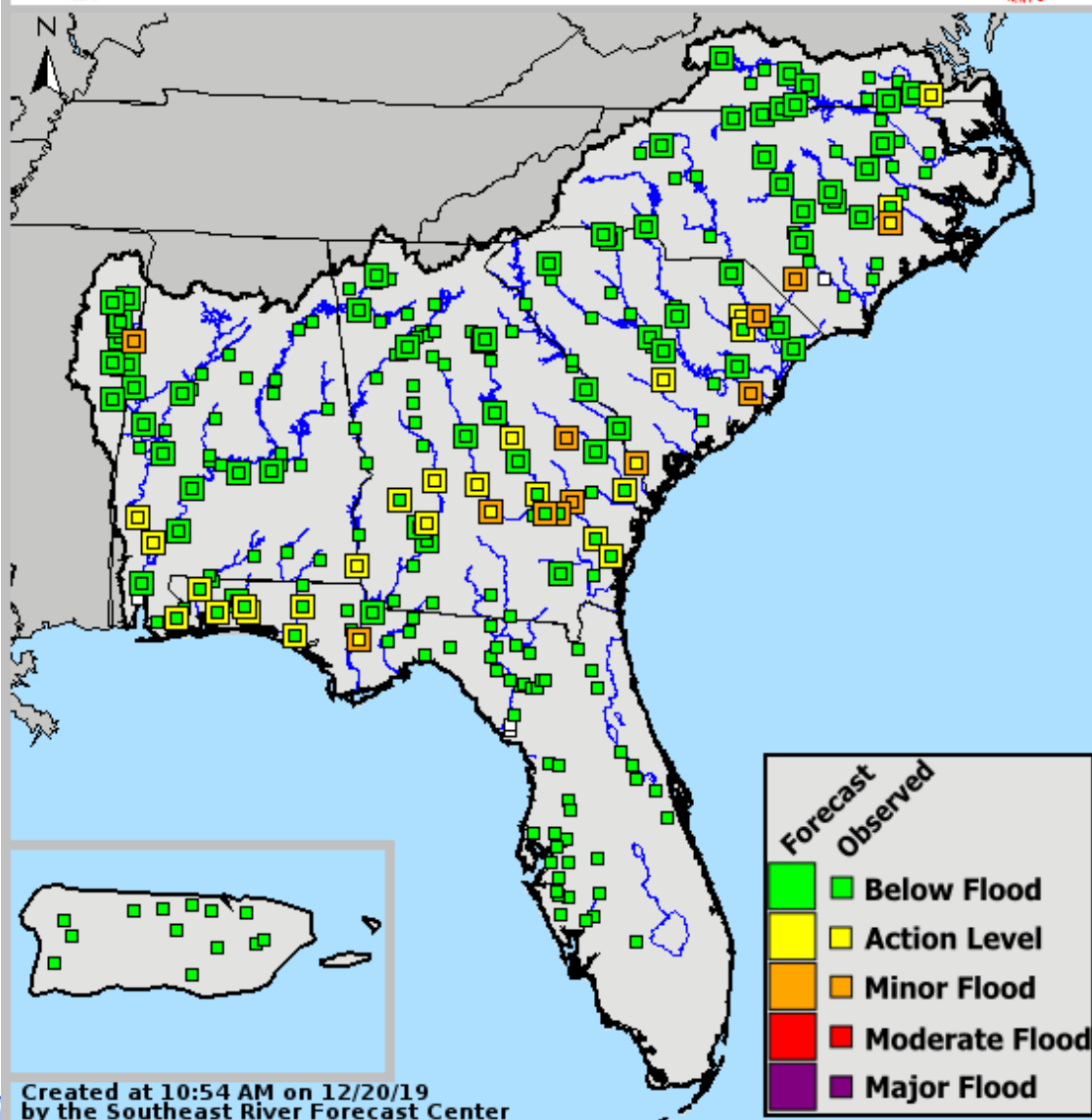
Precipitation Forecast Amounts through Monday Morning





SERFC River Conditions

Valid: 12/20/2019 @ 10:54 AM



Latest on Current River Conditions

Future rainfall will cause additional bankfull rises and potentially minor flooding across parts of the Southeast and worsen conditions on those rivers that are already running high from last weekends rainfall.

River flooding will be primarily in the minor flood impact category though an isolated moderate river flood may be possible if rainfall amounts approach closer to 5 inches in a basin.

Please visit the SERFC home page or your local weather offices page for more details about forecasts.

<https://www.weather.gov/serfc/>



NWSSERFC



@NWSSERFC

SERFC Operational Status

- At this time, SERFC remains on normal operations. Normal office hours are 6 am – 10 pm...7 days a week. Please contact us if you have any questions or concerns.
- The Decision Support Briefing will continue until further notice.

Latest River Stages and Forecasts
are available...click here!

Please send all operational correspondence to
sr-alr.rivers@noaa.gov or call the office directly.



Weather Ready Nation

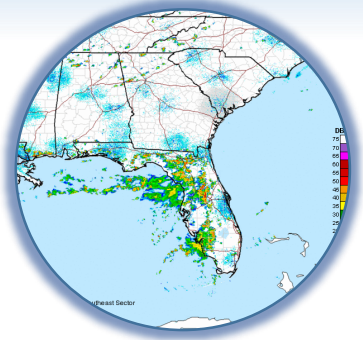


NWSSERFC

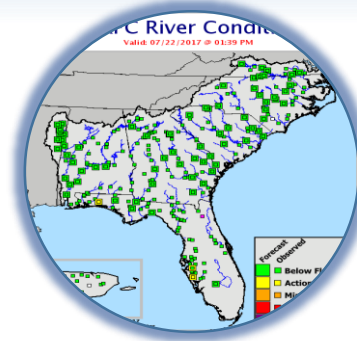


@NWSSERFC

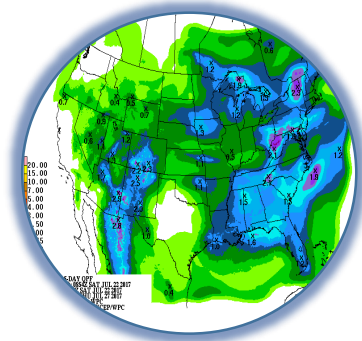
Helpful Bookmarks



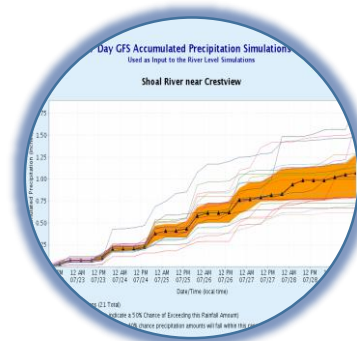
[Latest Radar](#)



[SERFC Quick Brief](#)



[Latest Forecast Rainfall](#)



[MMEFS – Ensemble River Forecasts](#)

About this Briefing

- *This product has set the stage for the upcoming event. The Decision Support Briefing will continue tomorrow to update you on current conditions and changes to the forecast.*
- *These slides are intended for your use. Please feel free to share these with others. If you have any questions please email sr-alr.rivers@noaa.gov or contact your local NWS Weather Forecast Office.*
- *Remember: SERFC briefings cover freshwater flooding. For information on coastal and tidal flooding, flash floods, winds, and severe weather risks, please contact your local Weather Forecast Office.*

