



# Drought Information Statement for Western Washington

Valid April 19, 2024

Issued By: NWS Seattle, WA

Contact Information:

- This product will be updated by May 10, 2024 or sooner if drought conditions change significantly.
- Please see all currently available products at <https://drought.gov/drought-information-statements>.
- Please visit <https://www.weather.gov/sew/DroughtInformationStatement> for previous statements.
- Please visit <https://www.drought.gov/drought-status-updates/> for regional drought status updates.

- STATE OF WASHINGTON DECLARES NEARLY [STATEWIDE DROUGHT EMERGENCY](#) (see link)
- Low snowpack conditions; low water supply outlook; warm, dry weather outlook are main reasons



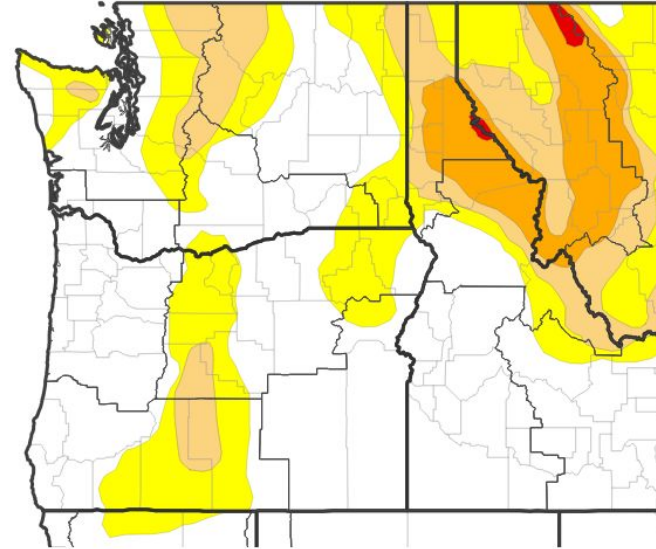


# U.S. Drought Monitor

Link to the [latest U.S. Drought Monitor](#) for western Washington

- Drought intensity and Extent
  - **D1 (Moderate Drought)**: north and central Cascades, Olympic Mountains
  - **D0: (Abnormally Dry)**: much of the Olympic Peninsula, most of the rest of the Cascades and western foothills

## U.S. Drought Monitor



## U.S. Drought Monitor



Source(s): NDMC, NOAA, USDA; image courtesy of Drought.gov

Data Valid: 04/16/24



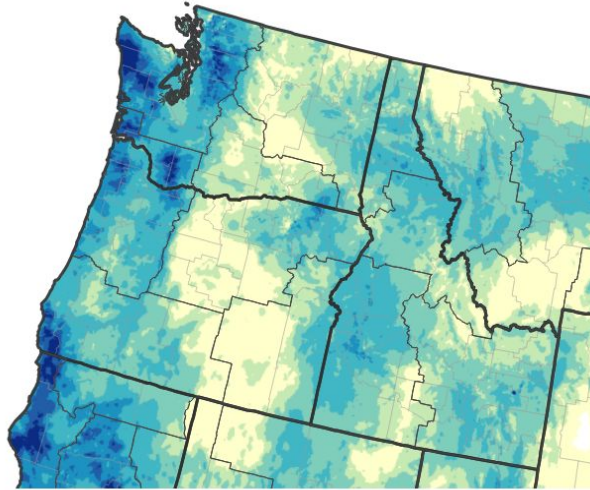


# Precipitation

Last 30 days

- 2 to 5 inches of rain have fallen over the lowlands in the last 30 days
- 3 to 10 inches of rain have fallen over the Cascades in the last 30 days
- Percent of normal was only 25-50%

### 30-Day Precipitation Accumulations (Inches)

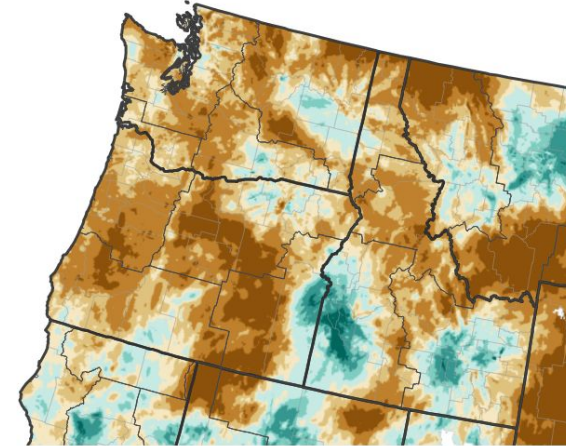


Inches of Precipitation

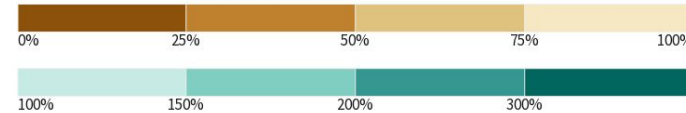


Source(s): National Weather Service Multi-Radar Multi-Sensor System; image courtesy of Drought.gov Last Updated: 04/19/24

### 30-Day Percent of Normal Precipitation



Percent of Normal Precipitation (%)



Source(s): National Weather Service Multi-Radar Multi-Sensor System; image courtesy of Drought.gov Last Updated: 04/19/24





# Summary of Impacts

Links: See/submit [Condition Monitoring Observer Reports \(CMOR\)](#) and view the [Drought Impacts Reporter](#)

## Hydrologic Impacts

- Water content of the mountain snowpack is well below normal; snow drought conditions exist

## Agricultural Impacts

- There are no known impacts at this time

## Fire Hazard Impacts

- There are no known impacts at this time

## Other Impacts

- Washington State Department of Ecology has expanded the [Declared Drought Emergency](#) to cover most of Washington State
- Excluded from the new drought declaration are limited areas in Seattle, Tacoma and Everett.

## Mitigation Actions

- Ecology is making funds available in drought response grants to qualifying public entities
- Individual use of water [conservation habits](#)





# Hydrologic Conditions and Impacts

- Data as of April 19, 2024
- Snowpack water equivalent was at 50% to 75% of normal
- NWRFC water supply forecasts for April through September were 60% to 85% of normal, with the majority of locations below 75%

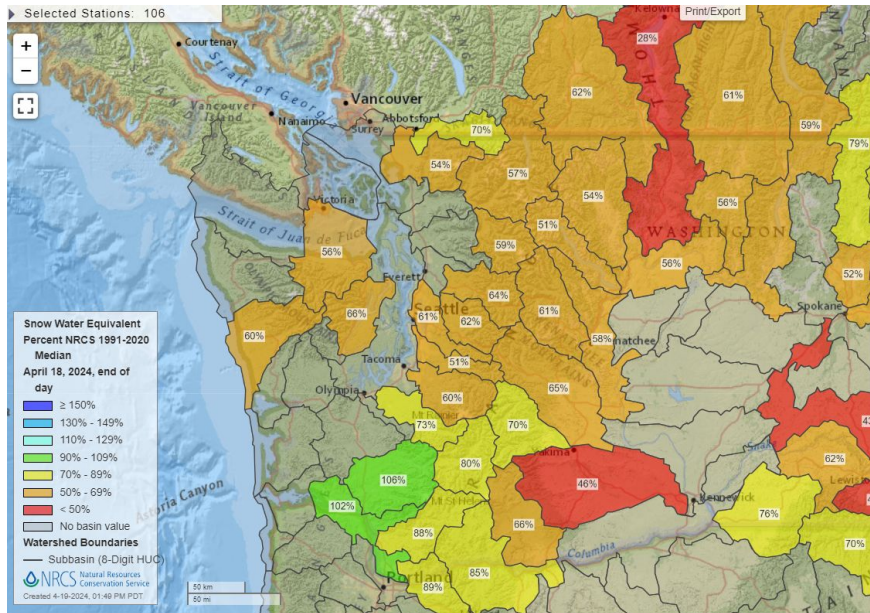


Figure Caption: [NRCS SWE for](#) Washington

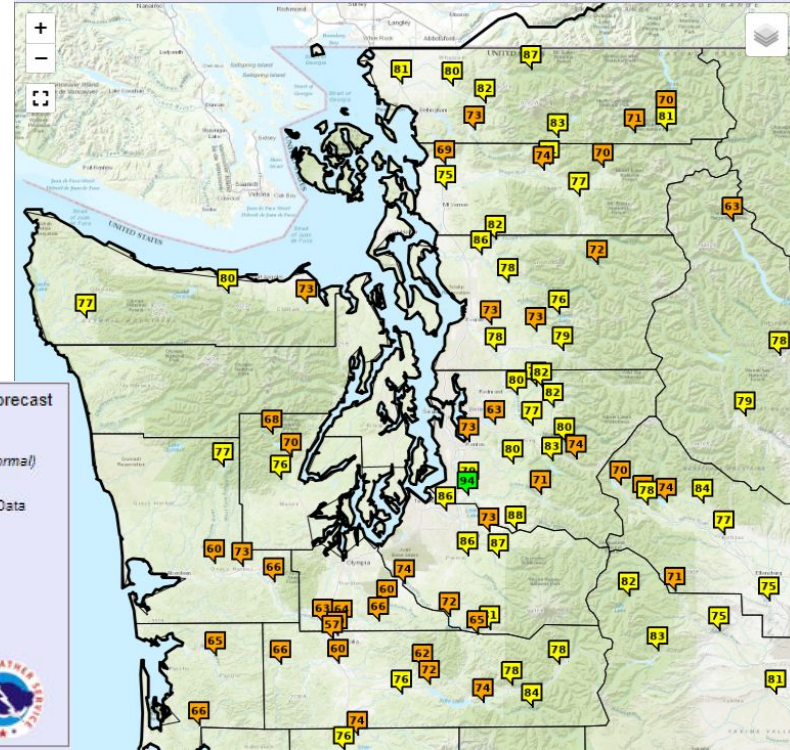


Figure Caption: NWRFC [ESP Natural Forecast for](#) Western Washington





# Long-Range Outlooks

The latest monthly and seasonal outlooks can be found on the [CPC homepage](#)

- Odds lean toward above normal temperatures on average through the month of July
- Odds lean towards below normal precipitation on average through the month of July

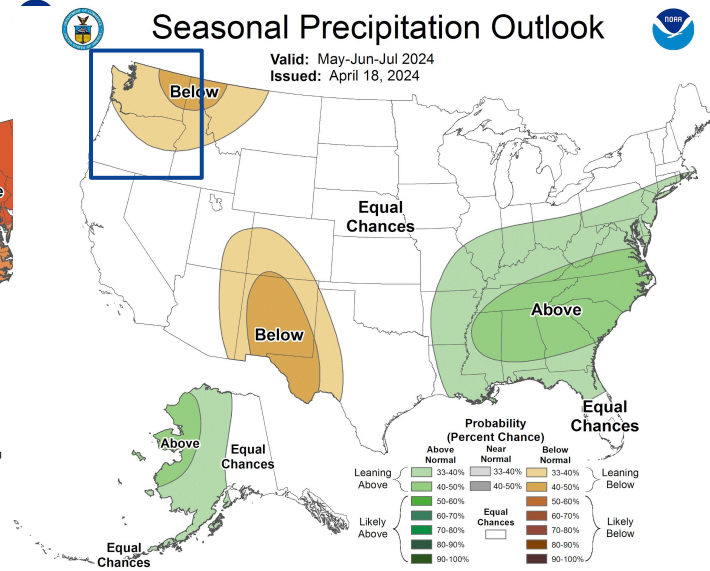
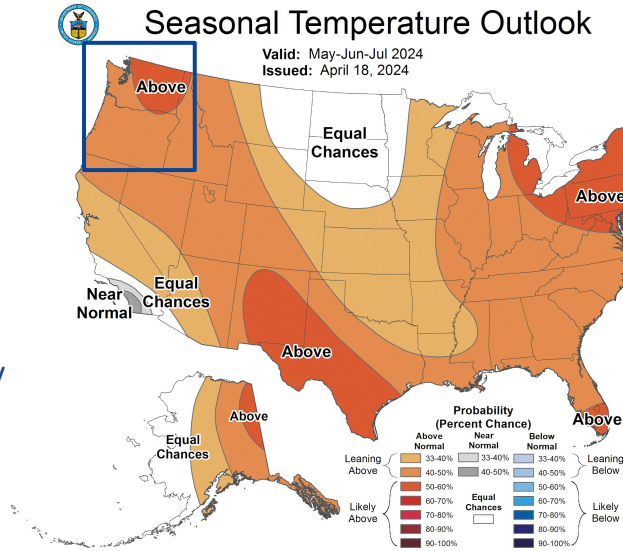


Image Captions:

Left - [Climate Prediction Center Seasonal Temperature Outlook](#)

Right - [Climate Prediction Center Seasonal Precipitation Outlook](#)

Valid May through July 2024

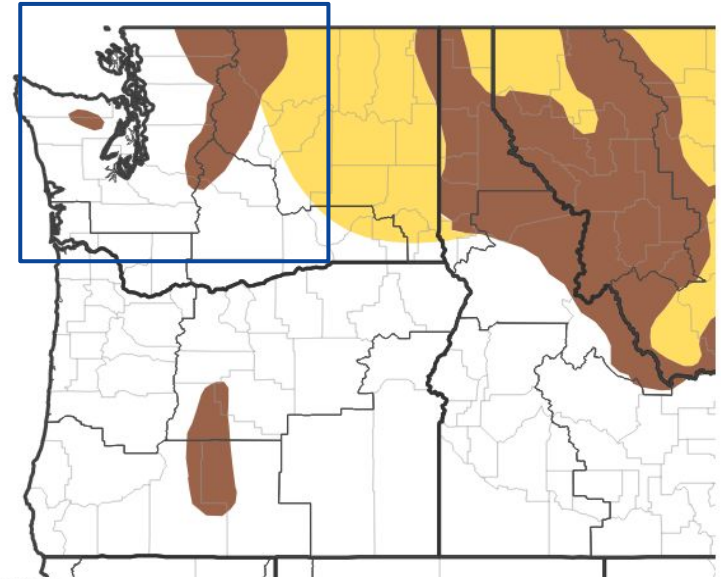




# Drought Outlook

The latest monthly and seasonal outlooks can be found on the [CPC homepage](#)

- Drought expected to persist or worsen



Drought Is Predicted To...



Links to the latest:

[Climate Prediction Center Monthly Drought Outlook](#)

[Climate Prediction Center Seasonal Drought Outlook](#)

Image Caption:

Climate Prediction Center Seasonal Drought Outlook Released April 18, 2024 valid for April 18, 2024 - July 31, 2024

