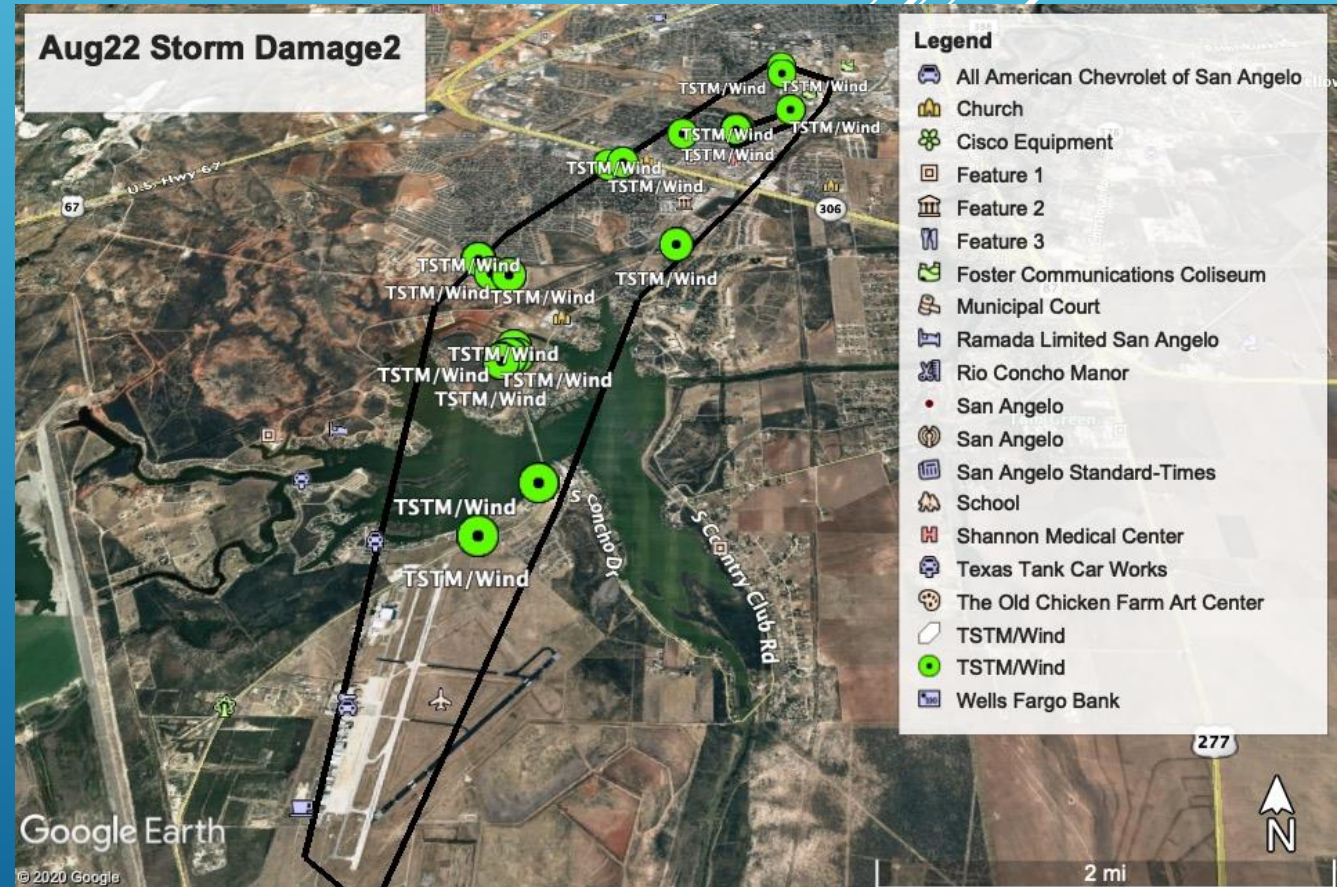


AUGUST 22, 2020 SAN ANGELO MICROBURST

Brief Overview





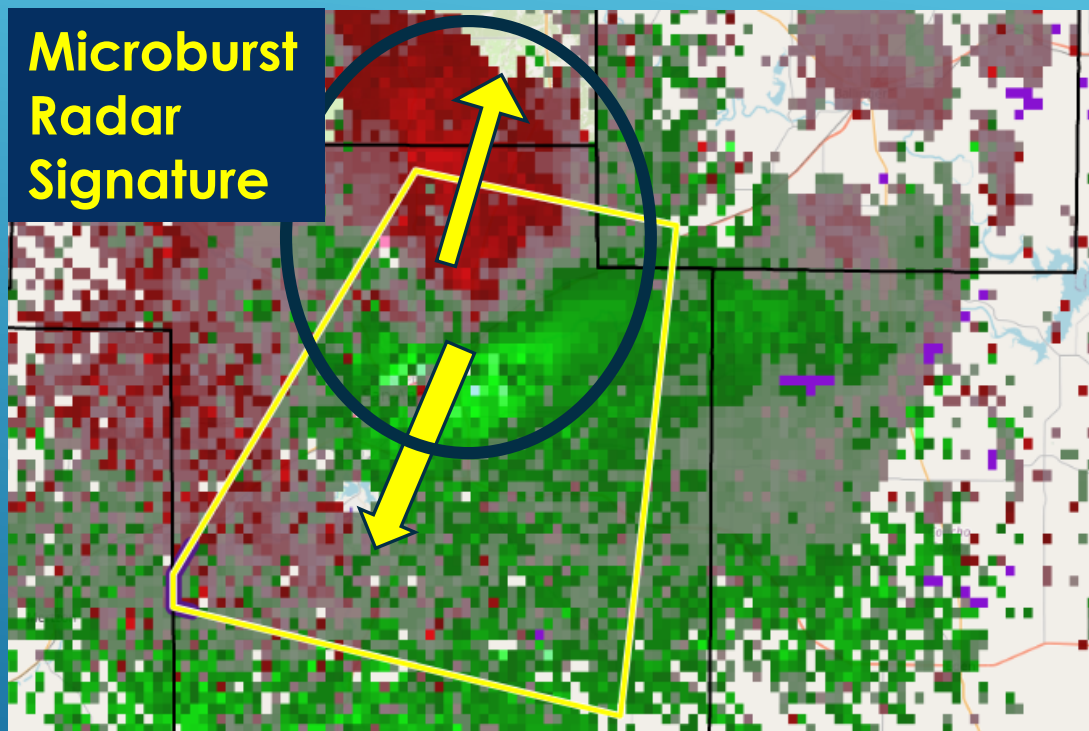
- ▶ Our hearts are with the San Angelo Community following the Friday Night damaging thunderstorm wind event.
- ▶ This summary shows some of the hardest hit areas and explains radar at the time of the damage.
- ▶ It's important to have at least 2 good ways to receive warnings from the National Weather Service. All Hazards Weather Radio should be included.
- ▶ When a thunderstorm microburst strikes the ground the wind goes in all directions. Doppler radar can only see the wind coming towards the radar or going away from it.

AUGUST 22, 2020
SAN ANGELO MICROBURST



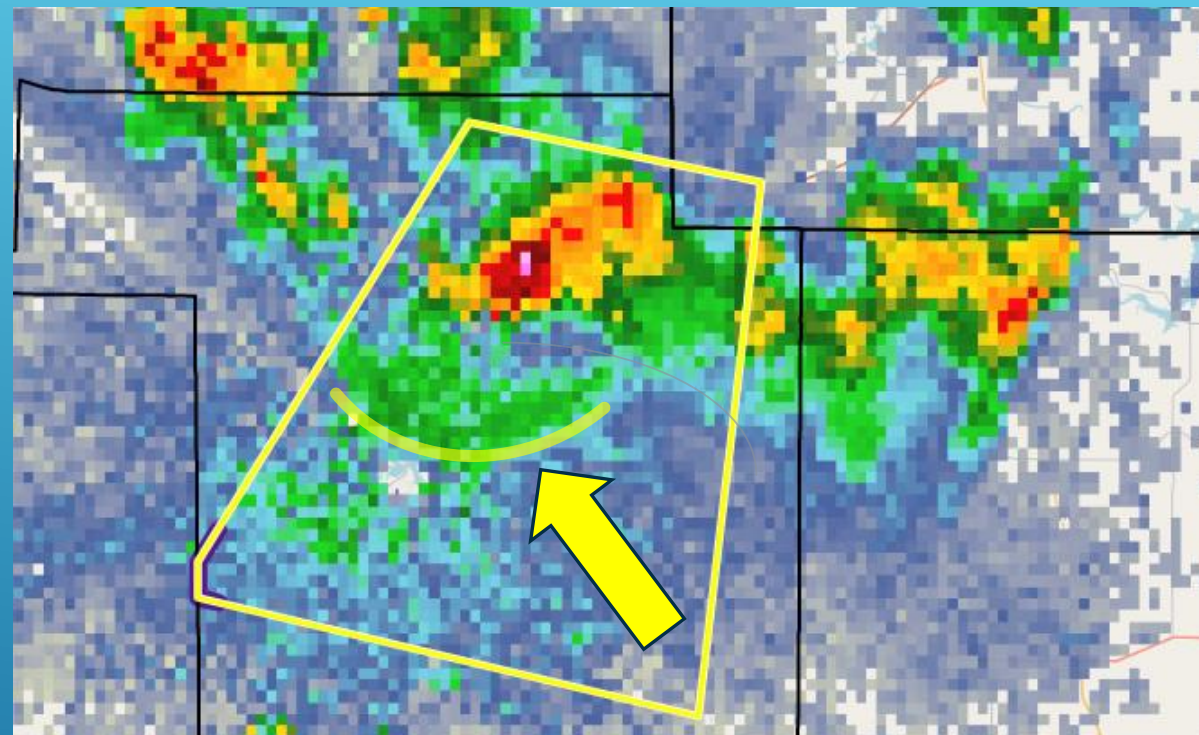
Loop 306 and Chadbourne at 130 AM

RADAR VELOCITY DATA

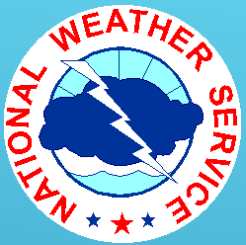


130 AM CDT: YELLOW ARROWS SHOW DIRECTION OF WIND RELATIVE TO THE DOPPLER RADAR. (WARNING BOX IN YELLOW. MICROBURST IN BLUE)

RADAR REFLECTIVITY DATA



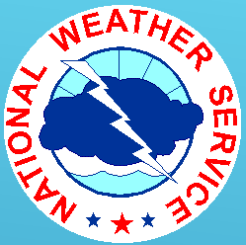
130 AM CDT: ARROW SHOWS LEADING EDGE OF GUST FRONT. HEAVY RAIN CORE NEAR LOOP 306 AND CHADBOURNE CAUSING MICROBURST.



SAN ANGELO DAMAGE SURVEY 8/22/2020



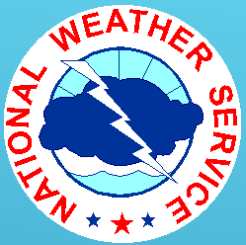
Power lines were blown across Loop 306 Between Bell St and Chadbourne



SAN ANGELO DAMAGE SURVEY 8/22/2020



Direction of debris was to the southwest at both locations near Chadbourne and Loop 306



SAN ANGELO DAMAGE SURVEY 8/22/2020

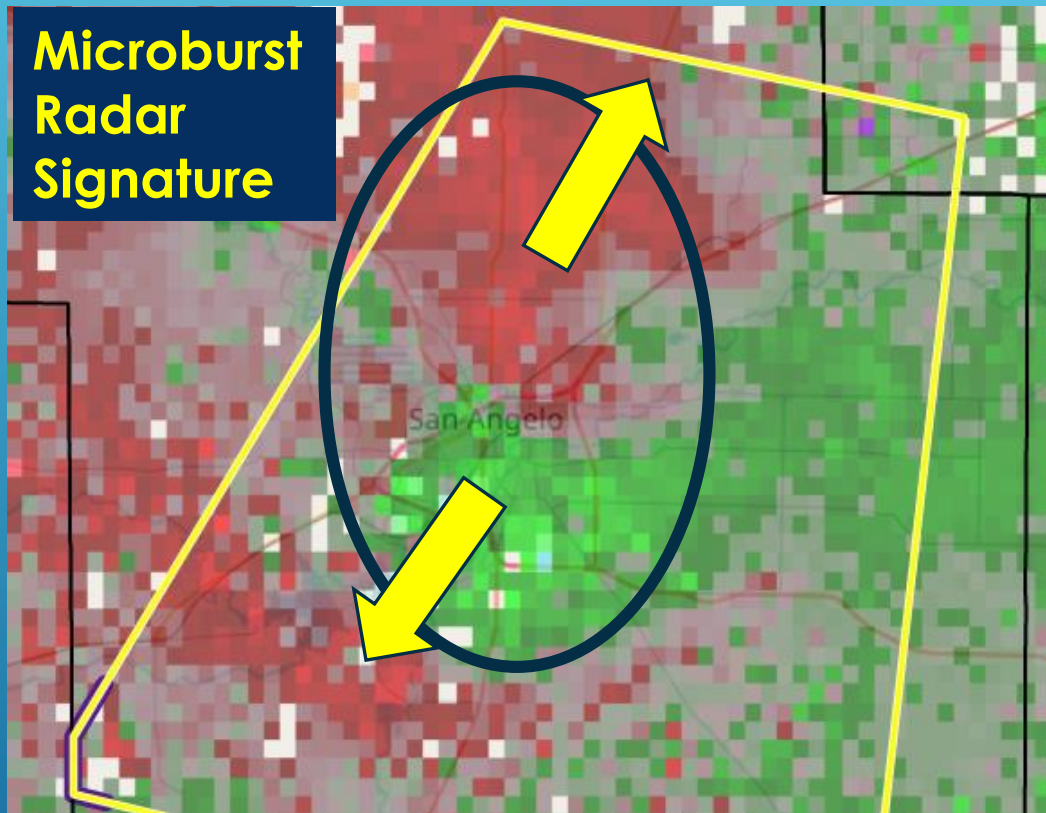


Street Sign and large tree limbs were blown to the west at Volney and E 12th Street



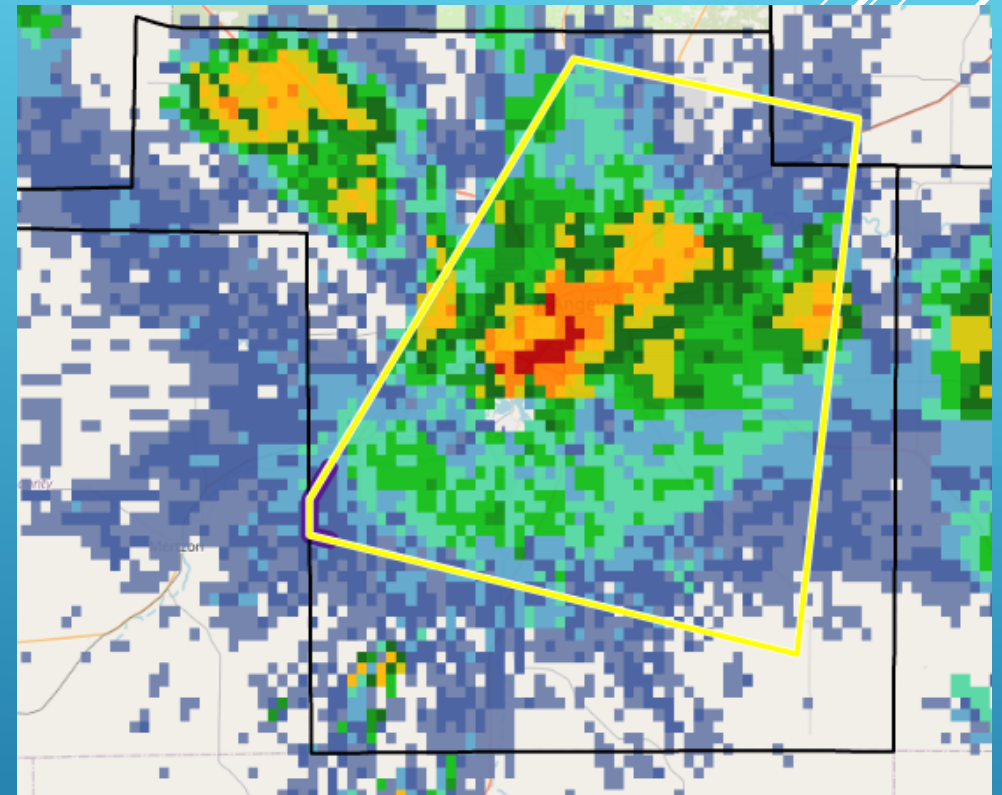
Knickerbocker and Johnson Street

RADAR VELOCITY DATA



141 AM CDT: Yellow Arrows Show Classic Microburst Wind Directions. (Warning Box in Yellow. Microburst in Blue)

RADAR REFLECTIVITY DATA



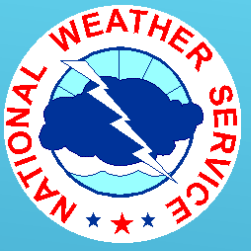
141 AM CDT: Heavy Rain Core Directly over Knickerbocker and Johnson Street with Intense microburst near 100 mph.



SAN ANGELO DAMAGE SURVEY 8/22/2020



Power poles and lines blown to the west near Knickerbocker Road and Johnson Street



SAN ANGELO DAMAGE SURVEY 8/22/2020

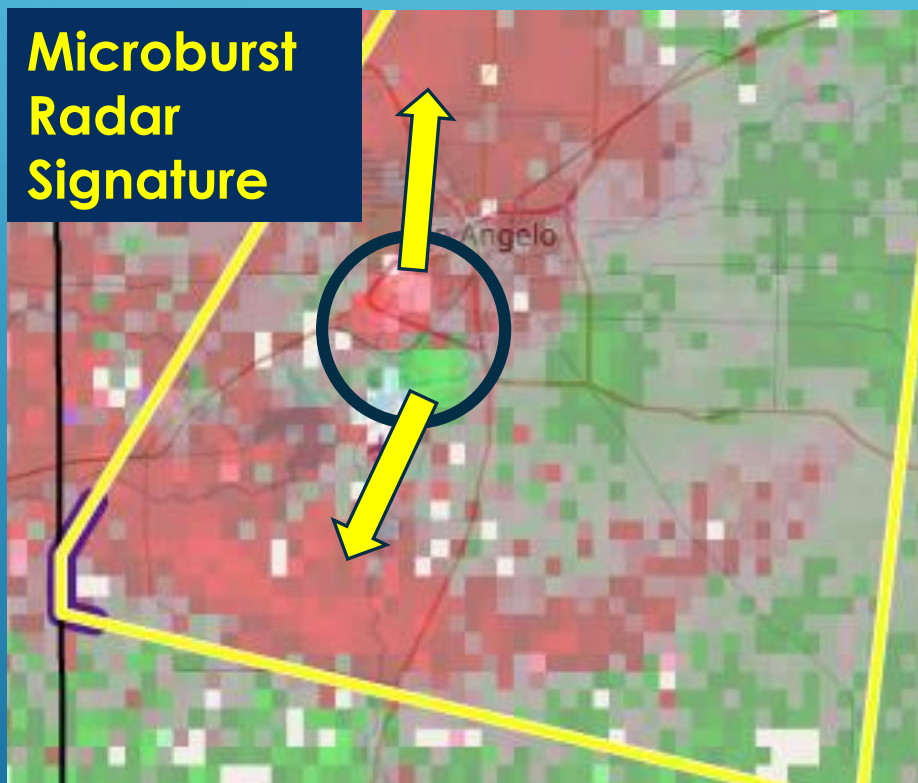


Roofing Material was blown from the northeast to the southwest direction and crushed the branches of this tree to the ground at the Bellagio Apartments



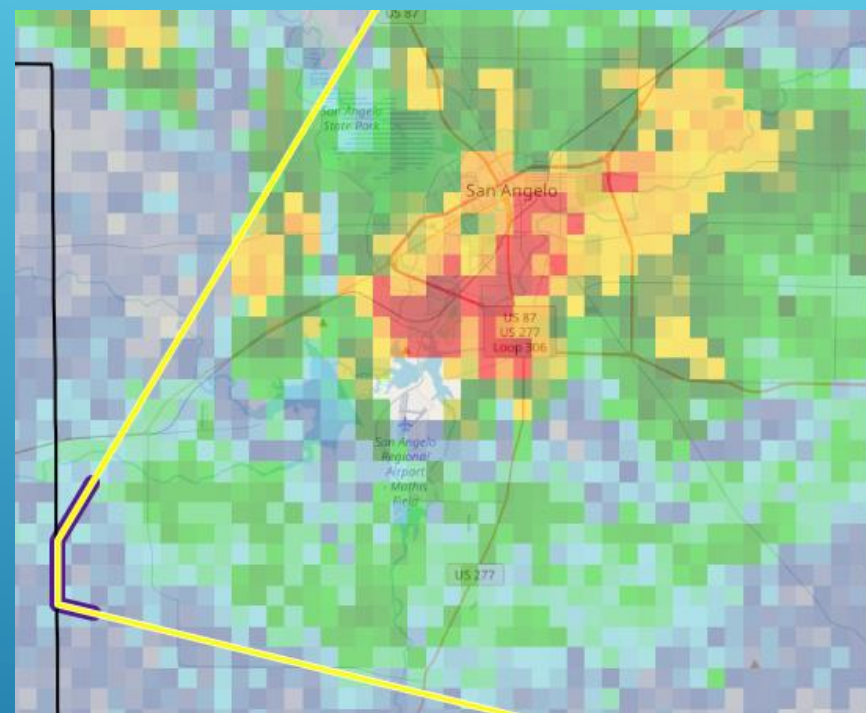
At San Angelo's KOA Near Lake Nasworthy

RADAR VELOCITY DATA



149 AM: Yellow Arrow Shows Wind Direction and Intense Winds. Classic Microburst Signature over KOA.

RADAR REFLECTIVITY DATA



149 AM: Heavy rain core approaching KOA w/intense microburst winds near 85 mph.



SAN ANGELO DAMAGE SURVEY 8/22/2020



Large tree limbs were broken off and blown to the south