

Climate and Weather Summary for February 2022

Temperatures in February averaged much below normal at San Angelo and Abilene. Precipitation was well-above normal at Abilene and well-below normal at San Angelo. Table 1 summarizes February 2022 temperature, precipitation, and departure from normal for Abilene and San Angelo.

Site	Average Temperature (°F)	Departure from Normal (°F)	Normal Average Temperature (°F)	Total Precipitation (In.)	Departure from Normal (In)	Normal Feb. Precipitation (In.)
Abilene	44.3°	-5.8°	50.1°	2.02"	0.73"	1.29"
San Angelo	45.1°	-6.4°	51.5°	0.35"	-0.85"	1.20"

Table 1: Feb. Climate Data for Abilene and San Angelo.

Additional temperature and precipitation data for Abilene and San Angelo is summarized in Table 2.

Site	Warmest High Temperature (°F)	Warmest Low Temperature (°F)	Coldest High Temperature (°F)	Coldest Low Temperature (°F)	Maximum Daily Precipitation (In.)
Abilene	81° on Feb. 21	57° on Feb. 16	20° on Feb. 3	13° on Feb. 4	0.73" Feb. 2
San Angelo	83° on Feb. 21	57° on Feb. 16	25° on Feb. 3	17° on Feb. 5	0.22" Feb. 2

Table 2: Additional Feb. Climate Data for Abilene and San Angelo.

- Total Snowfall for February was 3.0 inches at Abilene and 0.8 inches at San Angelo.
- 11th coldest February on record at San Angelo.

Maps of total precipitation and percentage of normal precipitation, for February, are shown in Figures 1 and 2 (next page).

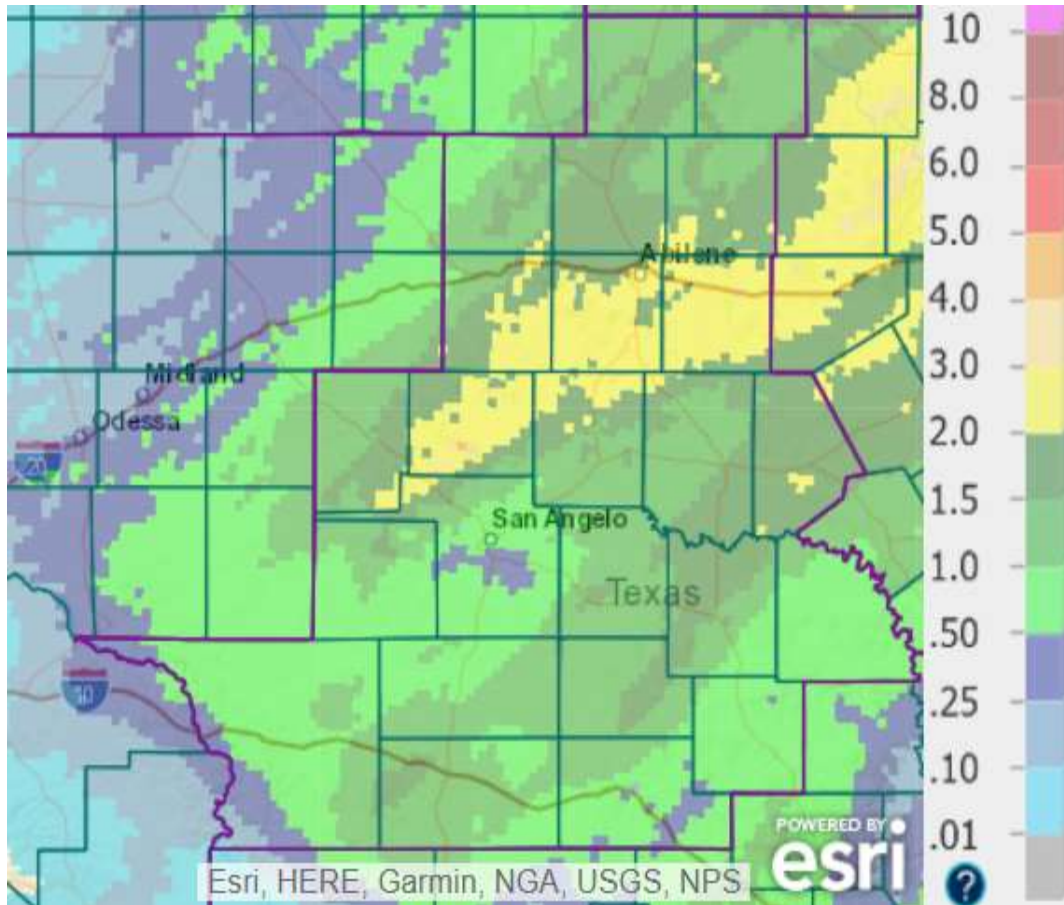


Figure 1: Total Precipitation for February.

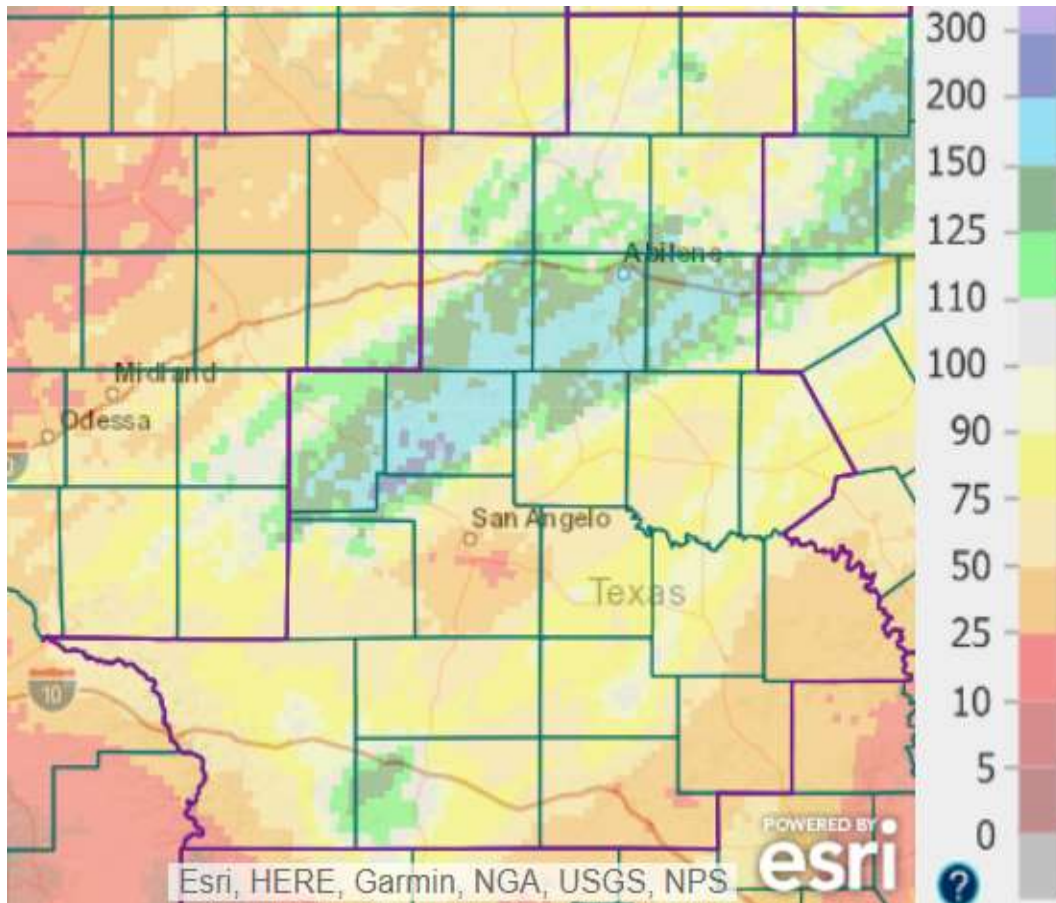


Figure 2: Percentage of Normal Precipitation for February.

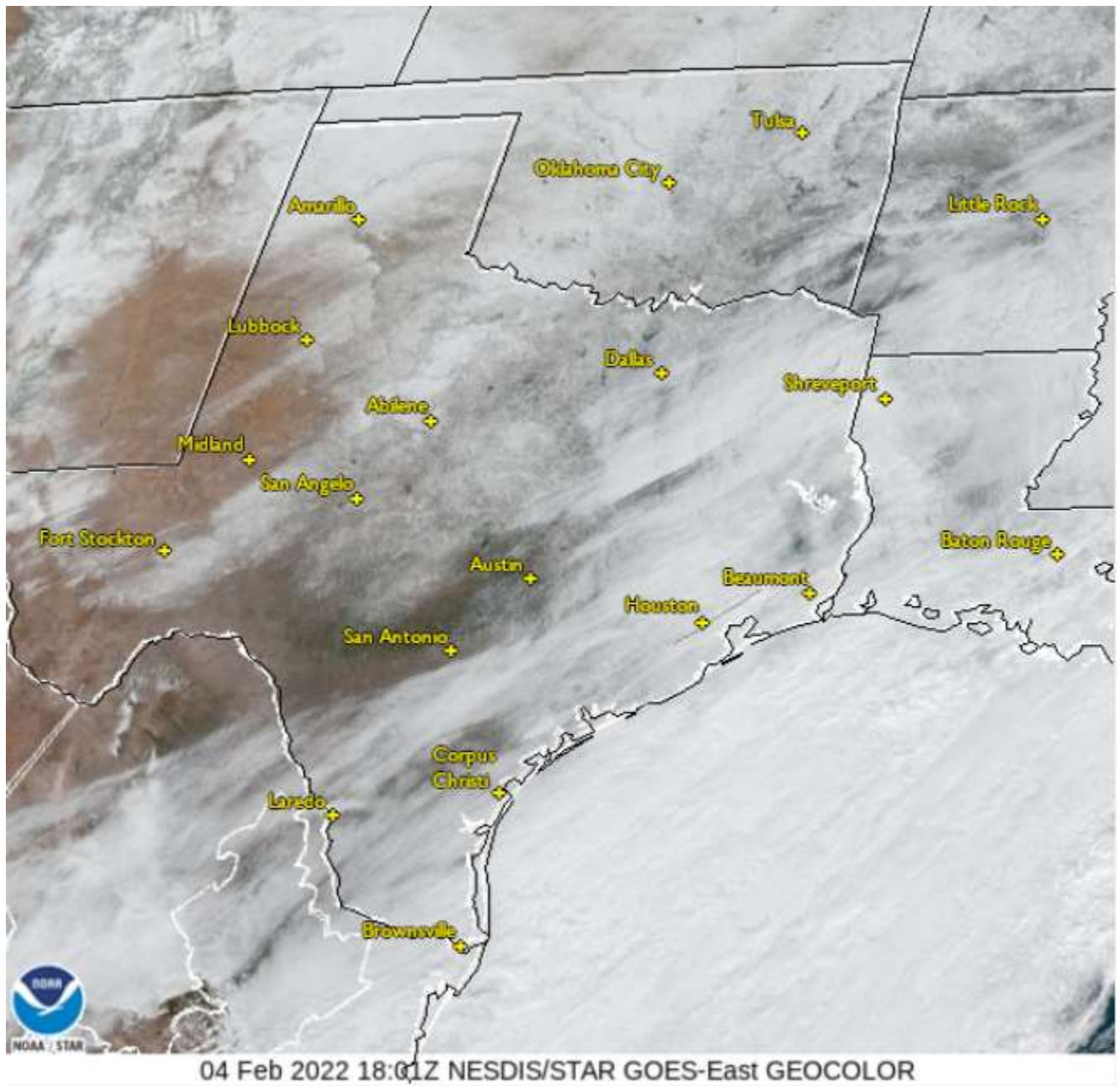
Precipitation for February varied from well-above to well-below normal across west-central Texas. The highest monthly precipitation (2-3 inches) occurred across the northern Concho Valley and southern Big Country (yellow shaded area in Fig. 1). The monthly precipitation was well-below normal (orange and red shading in Fig. 2) across central and southern Tom Green County, in southeastern parts of the area (generally southeast of a Junction to Richland Springs line), and in southwestern Crockett County.

February 2022 Weather Highlights

On Feb. 2-4, a winter weather event was followed by the coldest air of the winter season (to date).

On Feb. 2, A cold rain and freezing rain initially developed across the Big Country. The precipitation became mixed with sleet, and transitioned to a sleet and snow mix. Farther to the south across the Concho Valley and Heartland areas, a cold rain was mixed with sleet at times, before changing to freezing rain and sleet. The precipitation became mostly sleet in the evening and early nighttime hours, and ended as light snow overnight. In southern parts of the area, rain became freezing rain as temperatures dropped to and below freezing. Freezing rain mixed with and changed to sleet overnight.

The image below is a GOES Visible Satellite image on the morning of Feb. 4, which showed the snow cover after skies cleared.



The higher snowfall amounts (2-5 inches) occurred across the Big Country. In the Concho Valley and Heartland areas, snowfall accumulation was one-half inch to 2 inches. In southern parts of the area, snow accumulation was a trace to one-half inch. Sleet accumulations were around one-half inch. The light freezing rain and sleet produced a glaze of ice.

[Complete List of Snow, Sleet and Ice Reports.](#)

Wind Chill values were very cold (mostly between 5 degrees and 7 below zero) during the overnight hours of Feb. 3-4. The cold air lingered through Feb. 5.

With the approach of an upper level storm system from the southwestern states and a cold front, showers and thunderstorms with localized strong, gusty winds affected the Big Country and northern Concho Valley, in the overnight hours of Feb. 16-17. Rainfall amounts for this event are shown in Fig. 3.

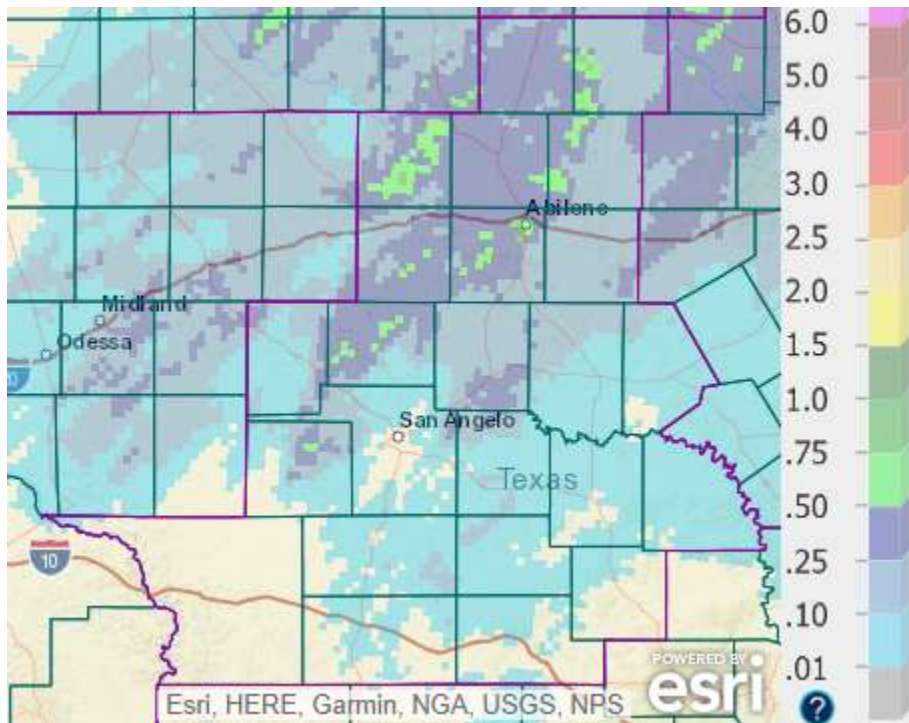


Figure 3: Rainfall amounts for the 24-hour Period ending at 6 AM, Feb. 17.

Where the showers and storms occurred, rainfall amounts varied mostly between one tenth and one-half inch, with localized higher amounts.

With the approach of an upper level disturbance, a band of showers and thunderstorms occurred across parts of the southern Big Country and northern Concho Valley (from east of Abilene to northwest of San Angelo). Rainfall amounts of one-half to one inch occurred, with localized higher amounts (Fig. 4).



Figure 4: Rainfall amounts for the 24-hour Period ending at 6 AM, Feb. 22.

An unsettled period with cold temperatures occurred Feb. 23-26, with light wintry precipitation Feb. 23-24. The precipitation was in the form of light sleet and freezing rain, and light freezing drizzle. Between Midnight and 5 AM on Feb. 23, a couple bands of mixed freezing rain and sleet, accompanied by lightning and thunder, moved north across the northern Concho Valley and Big Country. A quick glaze of sleet and ice occurred with these bands of mixed precipitation.

[Additional Tabular and Graphical Daily Climate Data](#)