

## Climate and Weather Summary for July 2020

Temperatures in July averaged above normal at Abilene and well-above normal at San Angelo. Precipitation was slightly above normal at Abilene and slightly below normal at San Angelo. Table 1 summarizes July, 2020 temperature, precipitation, and departure from normal for Abilene and San Angelo.

Site	Average Temperature (°F)	Departure from Normal (°F)	Normal Average Temperature (°F)	Total Precipitation (In.)	Departure from Normal (In)	Normal July Precipitation (In.)
Abilene	86.0°	2.9°	83.1°	2.07"	0.20"	1.87"
San Angelo	87.4°	4.3°	83.1°	0.99"	-0.21"	1.20"

**Table 1: July Climate Data for Abilene and San Angelo.**

Additional temperature and precipitation data for Abilene and San Angelo is summarized in Table 2.

Site	Warmest High Temperature (°F)	Warmest Low Temperature (°F)	Coolest High Temperature (°F)	Coolest Low Temperature (°F)	Maximum Daily Precipitation (In.)
Abilene	108° July 13-14	84° July 14	90° July 5, 31	68° on July 2	1.65" July 28
San Angelo	110° July 13-14	83° July 14	93° on July 7	69° on July 8	0.86" July 1

**Table 2: Additional July Climate Data for Abilene and San Angelo.**

- **4<sup>th</sup> warmest July on record tied at San Angelo**
- **5<sup>th</sup> warmest average high temperature for July on record at San Angelo (100.9 degrees)**

The July average high temperature at San Angelo has been 100 degrees or more on only 9 of the past 112 years on record.

The number of days in July with high temperatures 100 degrees or more were 20 at San Angelo and 7 at Abilene.

A Map of total precipitation for July is shown in Figure 1 (below). Percentage of normal precipitation for July is shown in Figure 2.

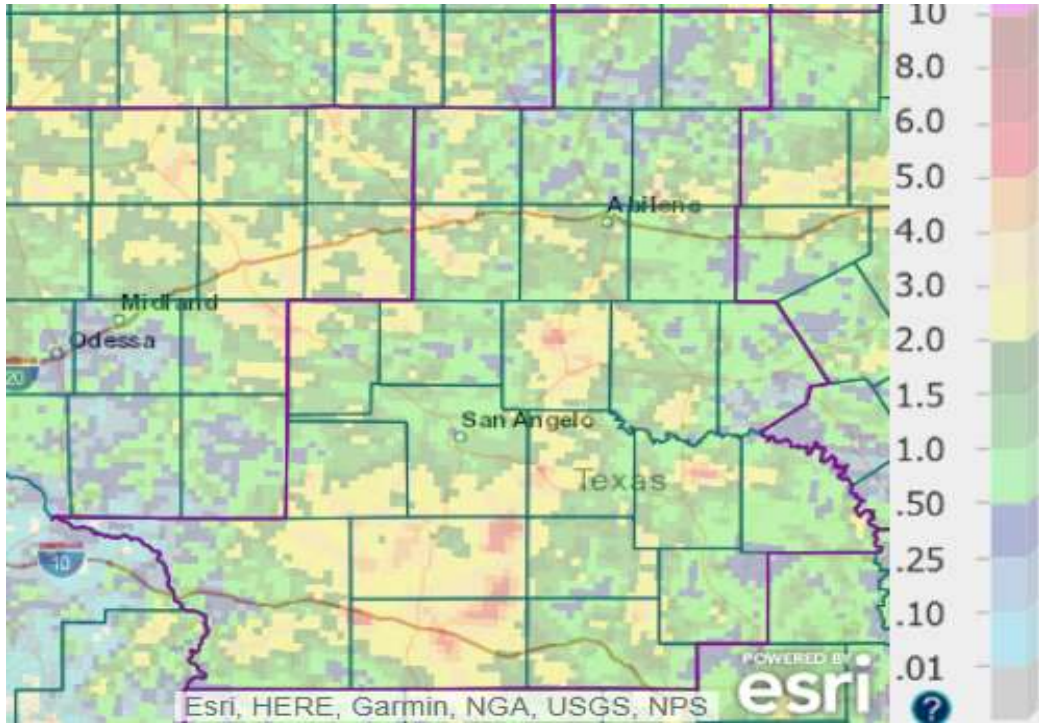


Figure 1: Total Precipitation for July.

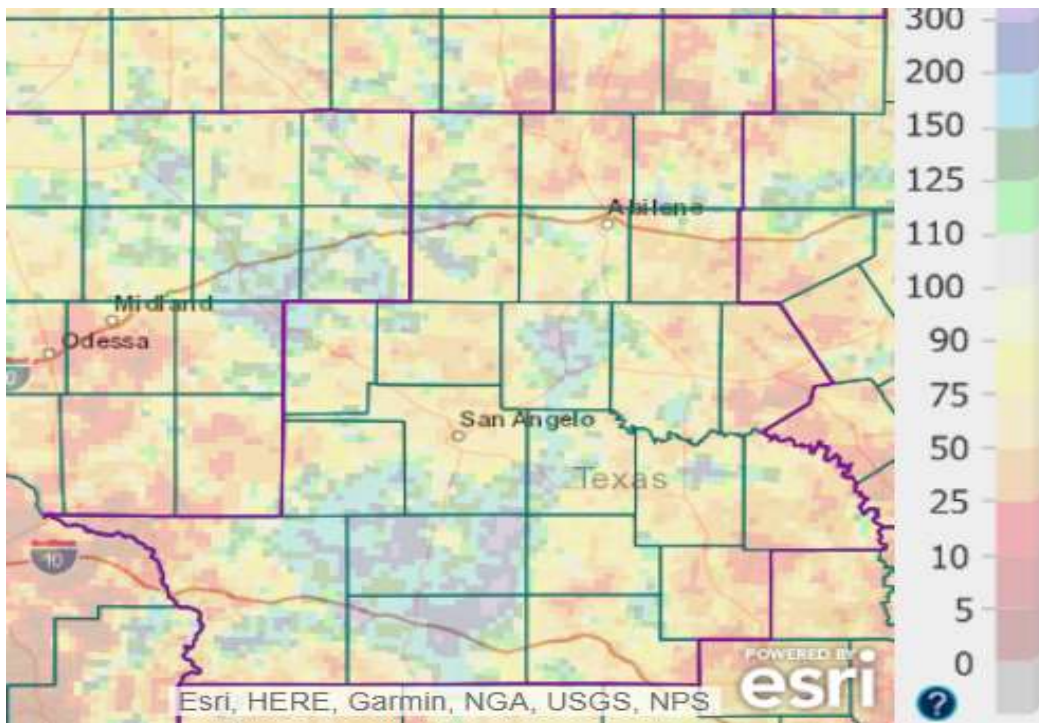


Figure 2: Percentage of Normal Precipitation for July.

Precipitation for July varied widely across [west-central Texas](#), from well-above to well-below normal. This was the result widely scattered coverage of the showers and thunderstorms which occurred during the month. This variation can also be seen across individual counties.

### **Weather Highlights:**

[Strong to severe storms occurred on July 1](#). With the approach of a dryline from the west into a hot and very unstable airmass, numerous thunderstorms occurred across central and southern parts of west-central Texas, while scattered storms occurred farther north across the southern Big Country. A thunderstorm wind gust of 60 mph was recorded at San Angelo Regional Airport. Strong thunderstorm downburst winds demolished a barn (40 ft. by 80 ft.) in southwestern Tom Green County, approximately 3 miles southwest of Knickerbocker. In Nolan County, a couple of semi-trucks were partially blown onto adjacent vehicles on Highway 84, approximately 3 miles north of Roscoe. In addition, a couple of semi-trucks were jackknifed by strong thunderstorm downburst winds on Interstate 20, in Sweetwater.

Early in the month, an upper level high pressure system was located over Arizona and New Mexico, with weak northerly flow aloft over Texas. This allowed a weak cold front to sag south into the area. Isolated to scattered showers and thunderstorms occurred on July 5-6 along and ahead of the weak front.

During much of July, the weather across west-central Texas was dominated by an upper level high pressure system, with hot and dry conditions, and above normal temperatures. Record heat occurred on July 13-14, when highs were 105-111 degrees. At San Angelo, highs of 110 degrees on July 13-14 were only 1 degree below the all-time record high of 111 degrees (set on several occasions). New daily record high temperatures were set at San Angelo on July 13-14, and at Abilene on July 13. Rather warm daily low temperatures of 80 degrees or above were recorded on two days in July at Abilene and San Angelo.

Isolated to scattered showers and thunderstorms occurred on several days late in the month, across various parts of west-central Texas. Toward the end of July, the upper level high pressure system shifted farther to the west over the southwestern part of the U.S. This allowed a weak cold front to move south across most of the area July 30-31. With northerly flow aloft, a weak upper level disturbance entered the Big Country on July 30 and brought scattered showers and thunderstorms. Strong, gusty winds accompanied [a couple of storms in Haskell County](#).

[Additional Tabular and Graphical Daily Climate Data](#)