

Climate and Weather Summary for July 2022

Temperatures in July averaged well-above normal at San Angelo and Abilene. Precipitation was well-below normal at both locations. Table 1 summarizes July 2022 temperature, precipitation, and departure from normal for Abilene and San Angelo.

Site	Average Temperature (°F)	Departure from Normal (°F)	Normal Average Temperature (°F)	Total Precipitation (In.)	Departure from Normal (In)	Normal July Precipitation (In.)
Abilene	90.7°	6.0°	84.7°	0.17"	-1.75"	1.92"
San Angelo	89.7°	4.9°	84.8°	0.01"	-1.09"	1.10"

Table 1: July Climate Data for Abilene and San Angelo.

Additional temperature and precipitation data for Abilene and San Angelo is summarized in Table 2.

Site	Warmest High Temperature (°F)	Warmest Low Temperature (°F)	Coolest High Temperature (°F)	Coolest Low Temperature (°F)	Maximum Daily Precipitation (In.)
Abilene	110° on July 18, 19, 20	83° July 19, 20	95° on July 21	67° on July 15	0.09" July 3
San Angelo	110° on July 11	80° July 19, 20	97° on July 3	61° on July 15	0.01" July 14

Table 2: Additional July Climate Data for Abilene and San Angelo.

- Warmest July average temperature on record at Abilene and San Angelo.
- Average temperature for July was the warmest of any month on record at Abilene (90.7°).
- Average temperature for July tied for the warmest of any month on record at San Angelo (89.7°).
- Highest consecutive number of days with temperatures 100° or more tied at San Angelo on July 31 (28 days).
- Highest number of days in July with temperatures of at least 100° tied at San Angelo (29 days) and Abilene (27 days).

- Average high temperature for July was the warmest of any month on record, at San Angelo (103.5°) and Abilene (103.7°).

Maps of total precipitation and percentage of normal precipitation, for July, are shown in Figures 1 and 2.

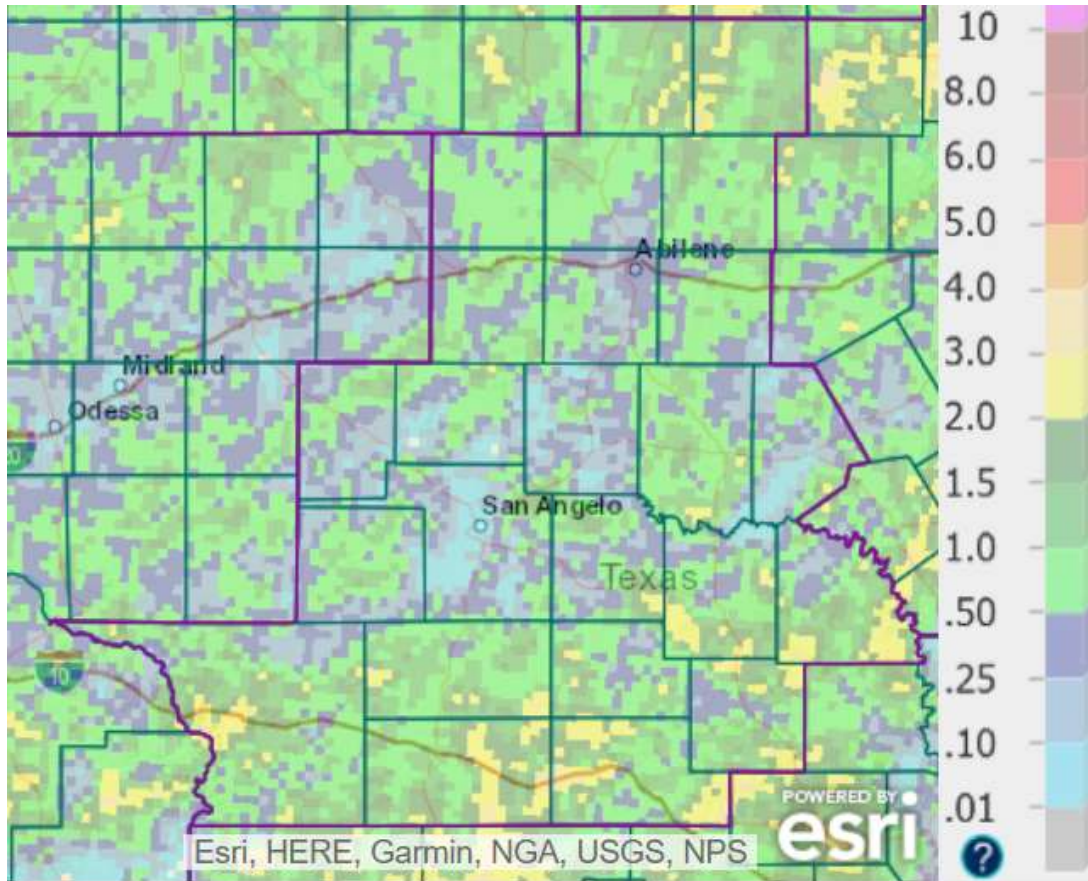


Figure 1: Total Precipitation for July.

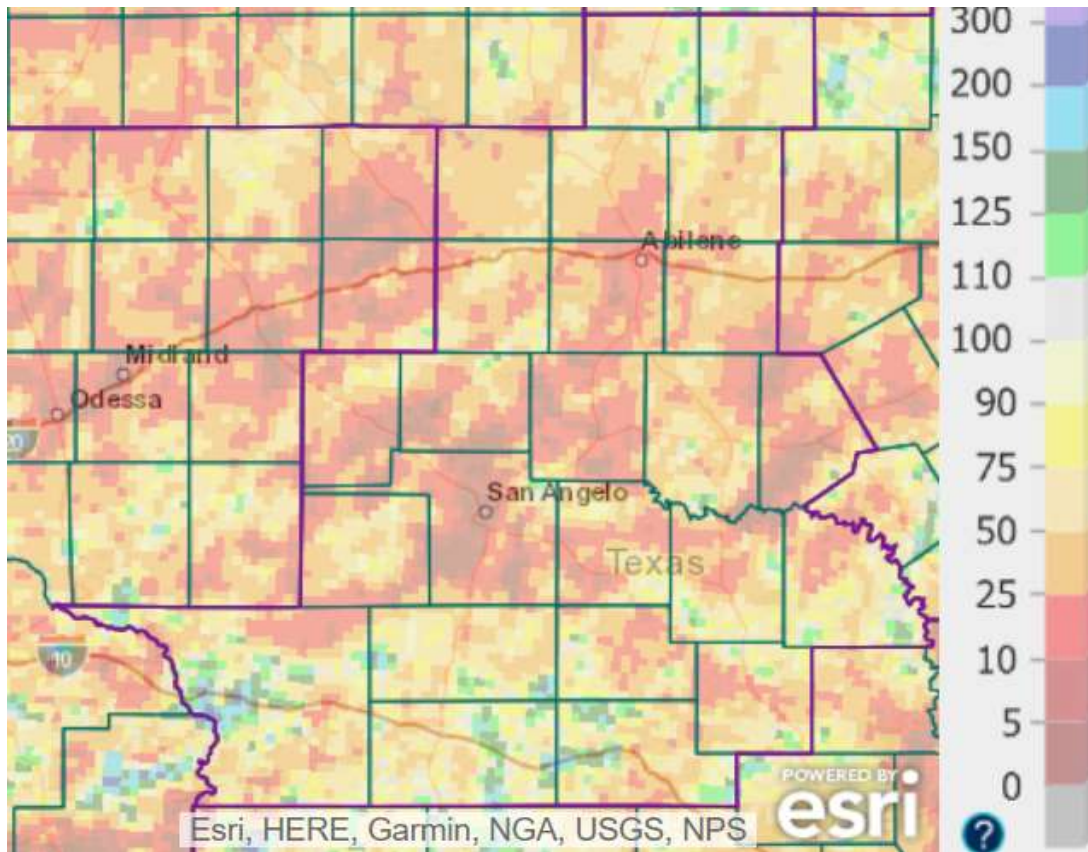


Figure 2: Percentage of Normal Precipitation for July.

Precipitation for July was well-below normal across much of the area (orange and red shading in Fig. 2). The monthly precipitation was above normal in patchy areas of the northern Big Country, the Heartland, and the southern third of the area.

July 2022 Weather Highlights

Very hot and dry conditions prevailed in most of July. Upper level high pressure systems remained in close enough proximity to dominate the weather pattern in west-central Texas. The tables on the next page show the numerous daily record high and record warm low temperatures which were set during the month, at San Angelo and Abilene.

San Angelo

Date	Temperature	Type of Temperature Record
July 5	78°	Tied Record Warm Low
July 6	78°	Tied Record Warm Low
July 6	105°	New Record High
July 7	79°	Tied Record Warm Low
July 8	106°	New Record High
July 9	106°	Tied Record High
July 10	107°	New Record High
July 11	110°	New Record High
July 18	107°	Tied Record High
July 19	80°	New Record Warm Low
July 19	108°	Tied Record High
July 20	80°	New Record Warm Low

Abilene

Date	Temperature	Type of Temperature Record
July 5	103°	Tied Record High
July 6	80°	New Record Warm Low
July 6	105°	New Record High
July 7	80°	Tied Record Warm Low
July 8	81°	New Record Warm Low
July 8	107°	New Record High
July 9	106°	Tied Record High
July 10	106°	Tied Record High
July 11	106°	New Record High
July 17	81°	Tied Record Warm Low
July 18	110°	Tied Record High
July 19	83°	New Record Warm Low
July 19	110°	New Record High
July 20	83°	New Record Warm Low
July 20	110°	New Record High
July 29	80°	Tied Record Warm Low
July 29	103°	Tied Record High
July 31	81°	New Record Warm Low
July 31	105°	Tied Record High

Isolated to scattered showers and thunderstorms occurred on a few occasions in the first half of the month. This was mostly in central and southern parts of west-central Texas, during the afternoon and evening hours of July 9, 12, and 14. Localized strong, gusty winds accompanied several of the storms.

The table on the next page shows the severe weather reports received for July 9, 12, and 14.

Jul 14 3:07PM	5 NE CHAPPEL	None MPH TSTM WND DMG	SAN SABA County
	LARGE 30FT APPROX. 2.5 FT DIAMETER CHINABERRY TREE DOWNED ALONG WITH SEVERAL TREE LIMBS.		
Jul 14 2:07PM	5 E CHAMPION	62.0 MPH TSTM WND GST	NOLAN County
Jul 12 7:07PM	VOCA	None MPH TSTM WND DMG	MCCULLOCH County
	METAL OUTBUILDING DESTROYED.		
Jul 12 4:07PM	4 ESE ARDEN	70.0 MPH TSTM WND GST	IRION County
Jul 09 7:07PM	4 NE MILES	1.0 HAIL	RUNNELS County
	NICKEL TO QUARTER SIZE HAIL WAS REPORTED.		
Jul 09 7:07PM	ROWENA	None MPH TSTM WND DMG	RUNNELS County
	ROOF DAMAGE REPORTED AT LIQUOR STORE AT HIGHWAY 67 AND FM 381 IN ROWENA. TIME ESTIMATED VIA RADAR.		
Jul 09 6:07PM	2 N SAN SABA	67.0 MPH TSTM WND GST	SAN SABA County
	SAN SABA AWOS REPORTED A 67 MPH WIND GUST. SO ALSO REPORTED POWER LINES DOWN IN SAN SABA.		
Jul 09 6:07PM	2 N SAN SABA	67.0 MPH TSTM WND GST	SAN SABA County
	SAN SABA AWOS REPORTED A 67 MPH WIND GUST.		

Locally heavy rain also accompanied some of the showers and storms. Fig. 3 shows total rainfall for the 7-day period ending at 7 AM, July 15. This encapsulates the rainfall for July 9,12, and 14.

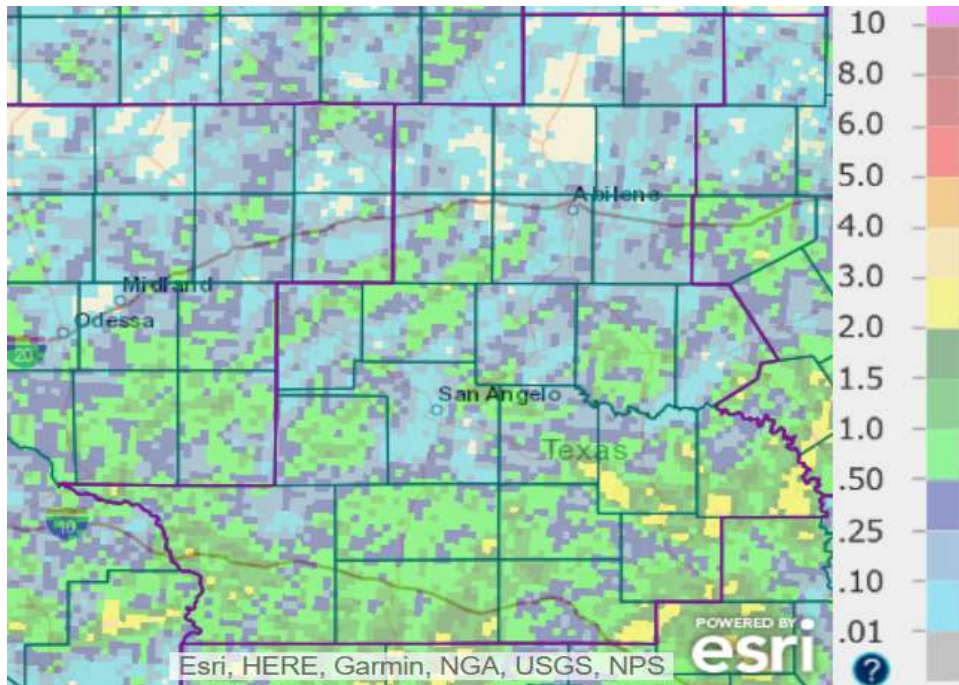


Figure 3: Rainfall amounts for the 7-day Period ending at 7 AM, July 15.

Generally, rainfall amounts and coverage were highest in the southern third of the area, along with the southern Heartland. With the prevalent hot and dry conditions, this was welcome rainfall.

Scattered showers and a few thunderstorms occurred on July 21-22, with most of the rainfall in the Big Country (especially in the northern half). With increased cloud cover, temperatures were not as hot at some locations, where highs were in the mid to upper 90s.

Late in the month, widely scattered showers and thunderstorms occurred in the Big Country on the afternoon and evening of July 29. Rainfall amounts of one quarter to three quarters of an inch occurred at some locations, and a few locations received over an inch.

[Additional Tabular and Graphical Daily Climate Data](#)