

Climate and Weather Summary for June 2022

Temperatures in June averaged well-above normal at San Angelo and Abilene. Precipitation was well-below normal at both locations. Table 1 summarizes June 2022 temperature, precipitation, and departure from normal for Abilene and San Angelo.

Site	Average Temperature (°F)	Departure from Normal (°F)	Normal Average Temperature (°F)	Total Precipitation (In.)	Departure from Normal (In)	Normal June Precipitation (In.)
Abilene	86.5°	5.4°	81.1°	0.69"	-2.75"	3.44"
San Angelo	86.3°	4.1°	82.2°	0.75"	-1.56"	2.31"

Table 1: June Climate Data for Abilene and San Angelo.

Additional temperature and precipitation data for Abilene and San Angelo is summarized in Table 2.

Site	Warmest High Temperature (°F)	Warmest Low Temperature (°F)	Coollest High Temperature (°F)	Coollest Low Temperature (°F)	Maximum Daily Precipitation (In.)
Abilene	109° on June 12	80° June 11-12	81° on June 3	63 on June 2	0.41" June 3
San Angelo	108° on June 12	79° on June 12	84° June 2-3	63° on June 3	0.45" June 3

Table 2: Additional June Climate Data for Abilene and San Angelo.

- 3rd warmest June on record at Abilene. At San Angelo, 4th warmest June on record.
- Abilene tied for the record highest number of days in June with 100 degree temperatures (21 days).
- San Angelo had the second highest number of days in June with 100 degree temperatures (21 days).
- At Abilene, daily record high temperatures were set or tied on 5 days in June. Record warm low temperatures were set or tied on 6 days.

- At San Angelo, daily record high temperatures were set or tied on 3 days in June. Record warm low temperatures were set or tied on 2 days.

Maps of total precipitation and percentage of normal precipitation, for June, are shown in Figures 1 and 2 (next page).

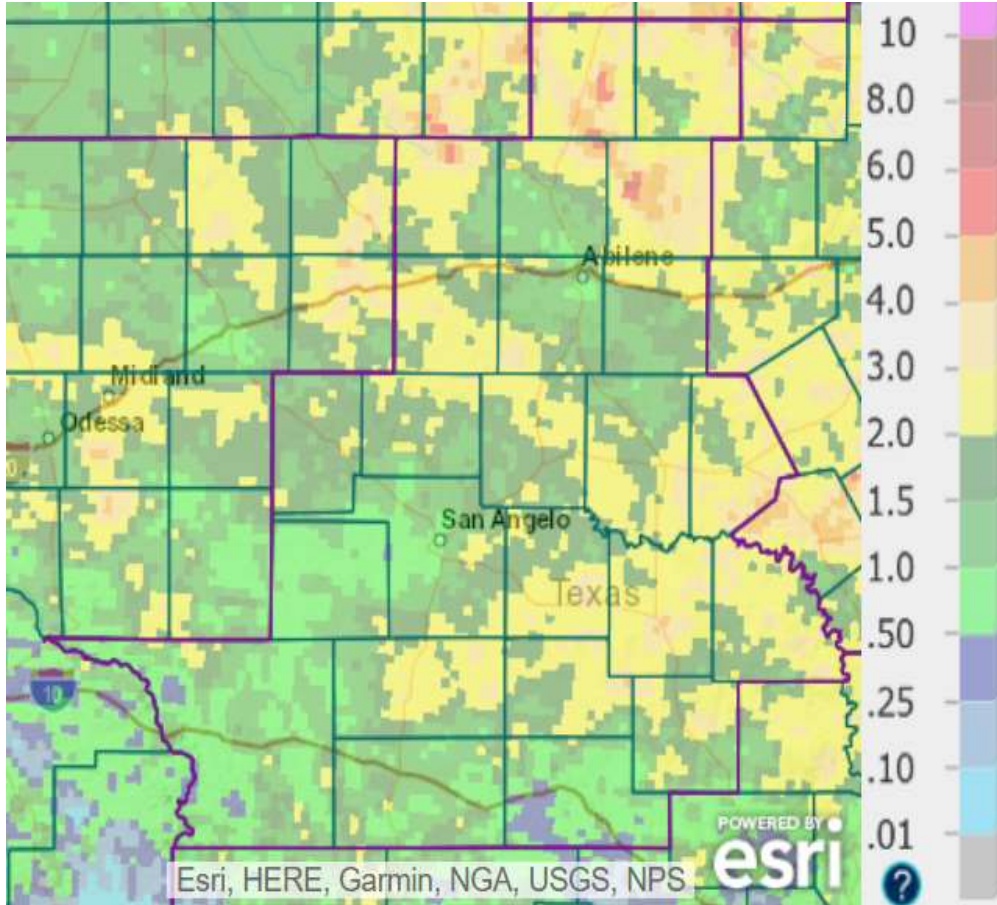


Figure 1: Total Precipitation for June.

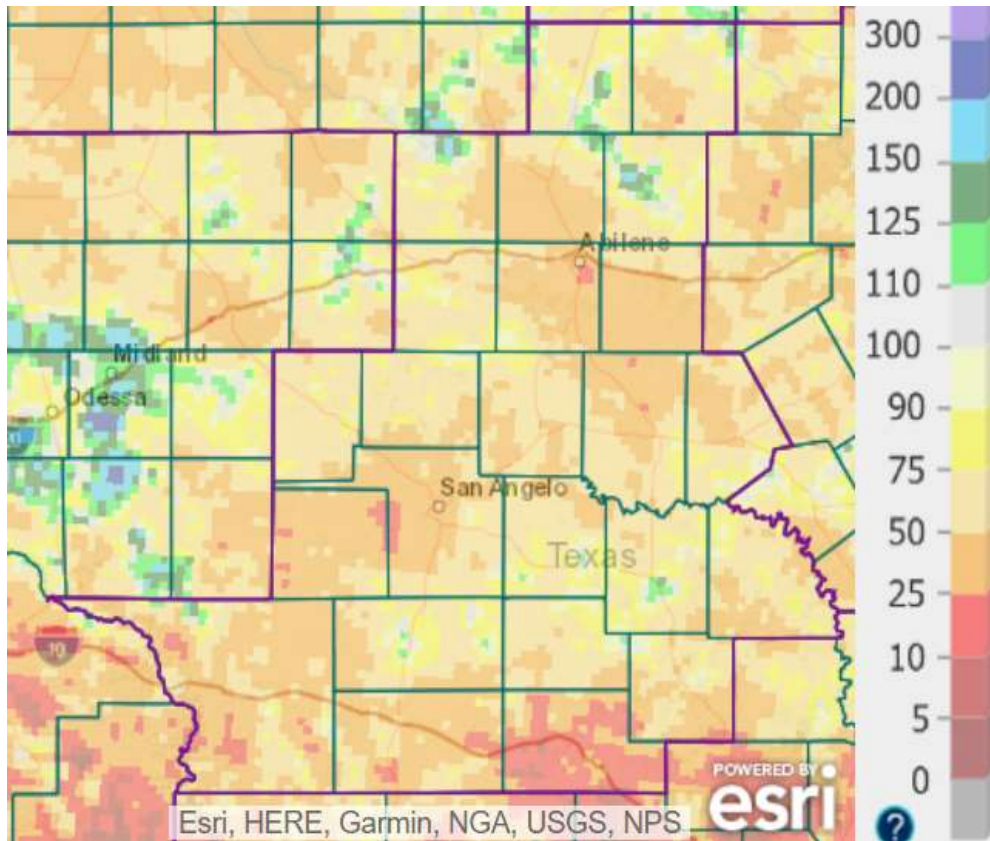


Figure 2: Percentage of Normal Precipitation for June.

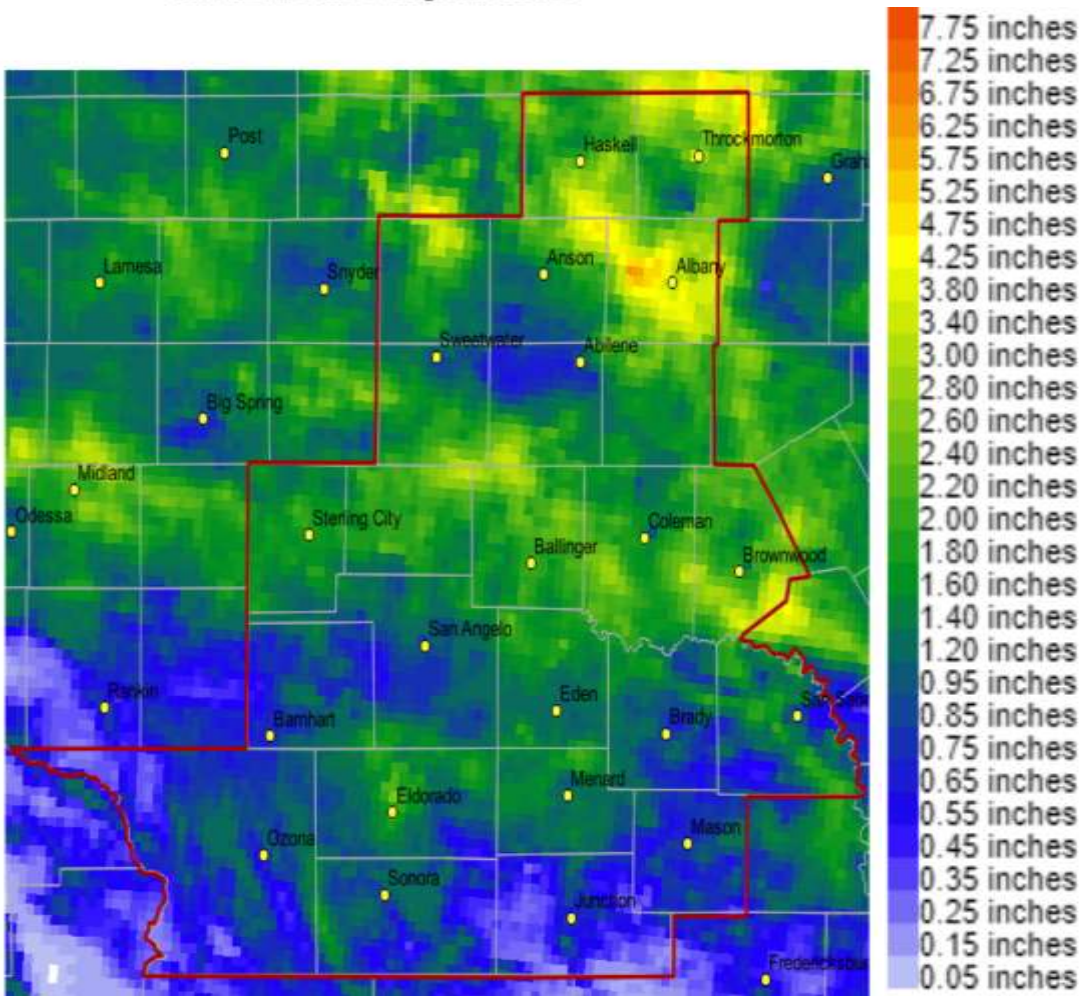
Precipitation for June was well-below normal across much of the area, with pockets of above normal precipitation (Fig. 2). The monthly rainfall varied widely across the area, from less than one-half inch to more than 5 inches (Fig. 1).

June 2022 Weather Highlights

A brief change in the pattern in the first part of June brought rainfall and cooler temperatures to the area. With the overall setup, a weakening upper level high pressure system was over northern Mexico. A series of upper level disturbances moved across New Mexico, around the northern periphery of this system, and into Texas. With this setup, clusters of thunderstorms developed over West Texas, and tracked east-southeast across west-central Texas during the nighttime into the early morning hours. Strong wind gusts accompanied a band of thunderstorms in the overnight hours of June 1-2. Area Mesonet sites recorded peak wind gusts of 81 mph in Shackelford County (3 miles east-northeast of Albany), and 69 mph in Tom Green County (3 miles southeast of Grape Creek). At the San Angelo Airport, a wind gust of 54 mph occurred. On June 3, a Mesoscale Convective Vortex (associated with the complex of thunderstorms on the preceding night) moved slowly east out of the Big Country. Additional showers and a few storms occurred with this system during the day on June 3.

The repeated rounds of showers and thunderstorms June 1-3 brought much needed rainfall to almost all of west-central Texas. Rainfall for this time period is shown on the map below.

June Rainfall Totals Through: Jun 07 2022



The above map shows rainfall for June 1-7, but captured the rainfall June 1-3 since no rain occurred June 4-7.

Triple digit heat resumed June 5 and continued through much of the month. At Abilene, new record highs occurred on June 6 (106 degrees). A new record warm low temperature was set on June 6 (77 degrees), and a record warm low of 77 degrees was tied on June 7.

At San Angelo, new record highs occurred on June 6 (106 degrees), and tied on June 5 (106 degrees).

Gusty winds occurred on June 8, mainly during the morning and early afternoon hours. A large thunderstorm complex moved from the Texas Panhandle east-southeast across southern Oklahoma and the Red River Valley. This sent an outflow boundary south across west-central Texas, and gusty north winds followed its passage. The strongest wind gusts (45-55 mph) occurred across the Big Country. The highest gust was 61 mph at a Mesonet site near Haskell. A 50 mph gust was recorded at the Abilene Airport. Wind gusts were not as strong (35-45 mph) farther south into the Concho Valley and Heartland areas. The peak wind gust was 43 mph at the San Angelo Airport. Temperatures were slightly cooler behind this outflow boundary across northern and central parts of west-central Texas, where highs were limited to the 90s.

Hotter temperatures resumed June 9-12, as an upper level high pressure system expanded over Texas.

At Abilene, new record highs were set on June 11 (108 degrees) and June 12 (109 degrees), and tied on June 10 (102 degrees) and June 13 (105 degrees). New record warm lows were set on June 11-12 (80 degrees), and June 13 (79 degrees). A record warm low was tied (78 degrees) on June 15.

At San Angelo, a record high was tied (108 degrees) on June 12. A new record warm low was set on June 12 (79 degrees), and tied on June 13 (78 degrees).

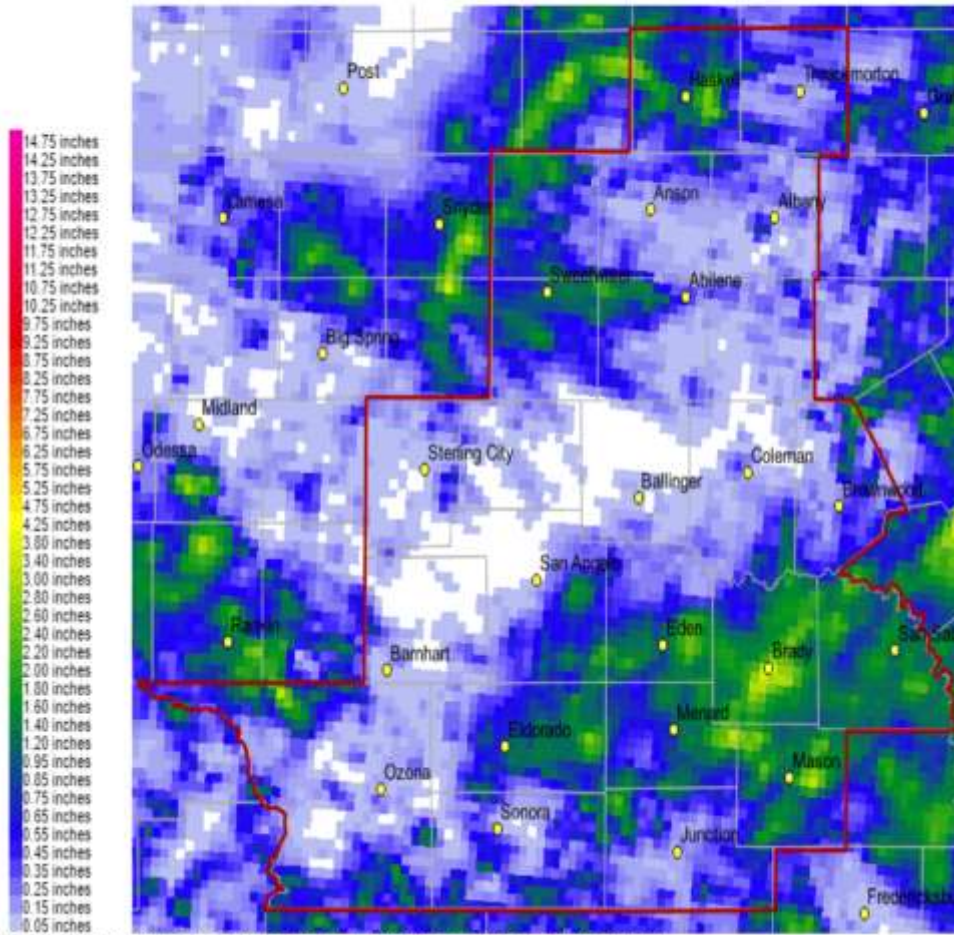
A steady-state pattern prevailed June 13-25, with hot and dry conditions and above normal temperatures. Daily highs were mostly in the 97-103 degree range, and overnight lows were in the 70s. The dominant weather influence was from an upper level high pressure system over Texas and adjacent parts of the southern U.S.

A temporary reprieve in conditions occurred late in the month. A weak cold front moved south into the area June 26-27. Isolated to scattered showers and thunderstorms occurred on the afternoon and evening of June 26, across the northern half of the area on June 26. Scattered to numerous showers and thunderstorms occurred across central and southern parts of west-central Texas on June 27. Widely scattered showers and storms affected southern and western parts of the area June 28-29. A few of the storms produced wind gusts 45-55 mph. With some cloud cover, highs were a little cooler in the 90s June 27-29.

Rainfall amounts for June 26-29 are shown in the map below.

Seven Day Rainfall Total

7 Day Rainfall Ending: Jun 29 2022 7:00AM



Note: Rainfall amounts are estimates and consist of both rain gauge data and radar data.

Rainfall of 1-3 inches occurred in the green shaded areas. Localized amounts over 3 inches are denoted by the yellow shading.

[Additional Tabular and Graphical Daily Climate Data](#)