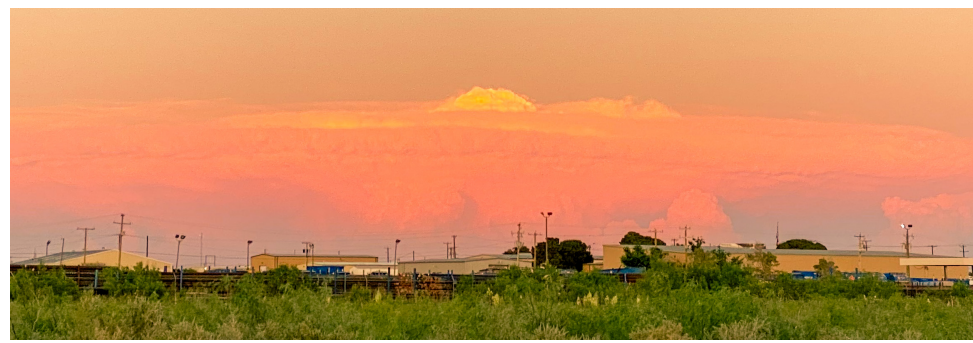


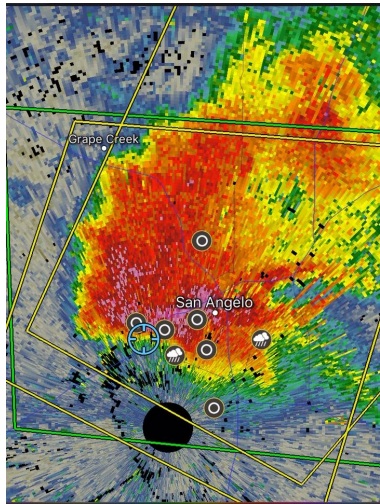
## **Overview**

An unstable airmass was prevalent over West Central Texas on the afternoon and evening of May 21. As is typical in May, atmospheric conditions supported the development of severe thunderstorms to include the threats of large hail and damaging winds. With a dryline just west of the area and the approach of an upper level disturbance from New Mexico, a small cluster of thunderstorms developed just east of the dryline in the western Concho Valley, around 6 PM. This cluster of storms moved northeast into San Angelo shortly after 6:45 PM. The storms congealed into one large storm over the city and became severe by 7:30 PM. For about 90 minutes, the storm remained nearly stationary over San Angelo, dumping large hail and producing strong winds. The storm then moved southeast toward Wall, before eventually weakening. Hail reports included golf ball to tennis ball size, up to teacup size (1.75 to 3 inches in diameter). This caused considerable damage to vehicles and roofs of homes and businesses across much of San Angelo and Goodfellow AFB.

View from NWS Midland office looking towards San Angelo. Photo taken by Matt Johnson

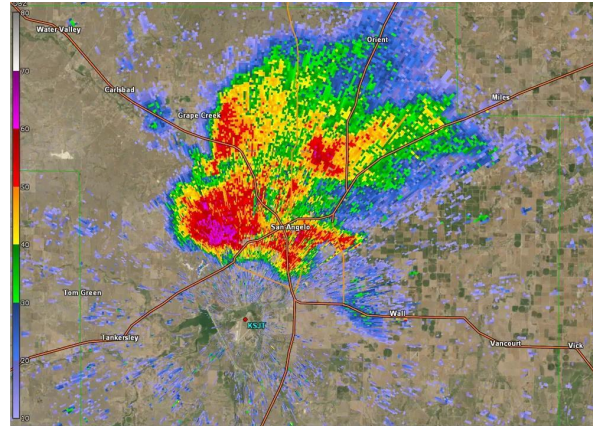


Radar at 7:38pm.  
Hail reports overlaid,  
courtesy of mPing.



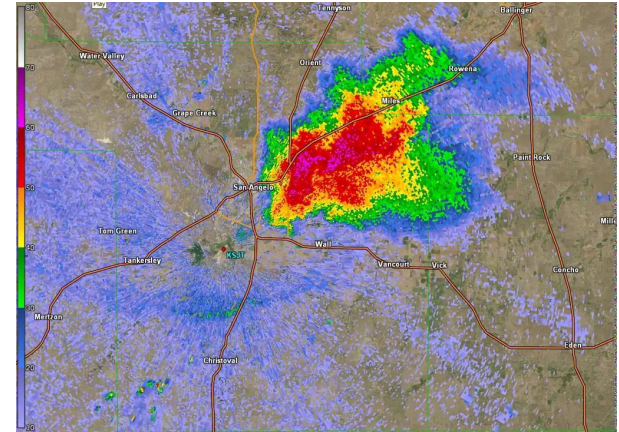
Radar loop from 6:50pm to 8:42pm

<https://youtu.be/5UAnUaAcObU>



Radar loop from 8:46pm to 10:40pm

<https://youtu.be/VeB1dl107q0>





S. Kearney



S. Kearney



B. Walters



B. Walters



H. Guerrero



H. Guerrero



B. Walters



B. Walters

Time	Location	County	State	Remarks
7:02pm	SAN ANGELO	TOM GREEN	TX	(SJT)
7:30pm	4 WSW SAN ANGELO	TOM GREEN	TX	DELAYED REPORT. (SJT)
7:33pm	5 SE GRAPE CREEK	TOM GREEN	TX	(SJT)
7:34pm	6 SE GRAPE CREEK	TOM GREEN	TX	(SJT)
7:35pm	3 SSE GRAPE CREEK	TOM GREEN	TX	GOLFBALL HAIL. (SJT)
7:36pm	1 ESE SAN ANGELO	TOM GREEN	TX	(SJT)
7:40pm	2 W SAN ANGELO	TOM GREEN	TX	(SJT)
7:41pm	2 NE SAN ANGELO	TOM GREEN	TX	(SJT)
7:46pm	1 ENE SAN ANGELO	TOM GREEN	TX	(SJT)
7:49pm	4 W SAN ANGELO	TOM GREEN	TX	REPORT FROM MPING: TEA CUP (3.00 IN.). (SJT)
7:54pm	1 ESE SAN ANGELO	TOM GREEN	TX	(SJT)
8:00pm	2 NE SAN ANGELO	TOM GREEN	TX	(SJT)
8:10pm	3 NNE SAN ANGELO	TOM GREEN	TX	(SJT)
8:34pm	5 ENE SAN ANGELO	TOM GREEN	TX	(SJT)
8:38pm	3 E WALL	TOM GREEN	TX	(SJT)
8:51pm	3 ESE GRAPE CREEK	TOM GREEN	TX	(SJT)
8:55pm	3 SW HARRIET	TOM GREEN	TX	(SJT)
10:00pm	2NE WALL	TOM GREEN	TX	TIME ESTIMATED. DELAYED REPORT. (SJT)
10:15pm	WALL	TOM GREEN	TX	(SJT)

Click here for interactive LSR displays from this event:

- [IEM LSR Application](#)

- [SPC ESRI Map](#)

