

Climate and Weather Summary for November 2022

Temperatures in November averaged below normal at Abilene and San Angelo. Precipitation was above normal at Abilene and well-normal at San Angelo. Table 1 summarizes November 2022 temperature, precipitation, and departure from normal for Abilene and San Angelo.

Site	Average Temperature (°F)	Departure from Normal (°F)	Normal Average Temperature (°F)	Total Precipitation (In.)	Departure from Normal (In)	Normal Nov. Precipitation (In.)
Abilene	53.3°	-2.2°	55.5°	1.55"	0.18"	1.37"
San Angelo	53.6°	-2.3°	55.9°	2.78"	1.64"	1.14"

Table 1: Nov. Climate Data for Abilene and San Angelo.

Additional temperature and precipitation data for Abilene and San Angelo is summarized in Table 2.

Site	Warmest High Temperature (°F)	Warmest Low Temperature (°F)	Coldest High Temperature (°F)	Coldest Low Temperature (°F)	Maximum Daily Precipitation (In.)
Abilene	83° on Nov. 6	67° on Nov. 9	43° on Nov. 18	24° on Nov. 20	0.80" Nov. 25
San Angelo	85° on Nov. 6, 7	65° on Nov. 35	39° on Nov. 20	27° on Nov. 18	1.90" Nov. 25

Table 2: Additional Nov. Climate Data for Abilene and San Angelo.

- First widespread freeze occurred on Nov. 12.
- An extended period of below normal temperatures occurred during the middle part of November.
- A more widespread rain event occurred Nov. 24-26 across the area.

Maps of total precipitation and percentage of normal precipitation, for November, are shown in Figures 1 and 2 (next page).

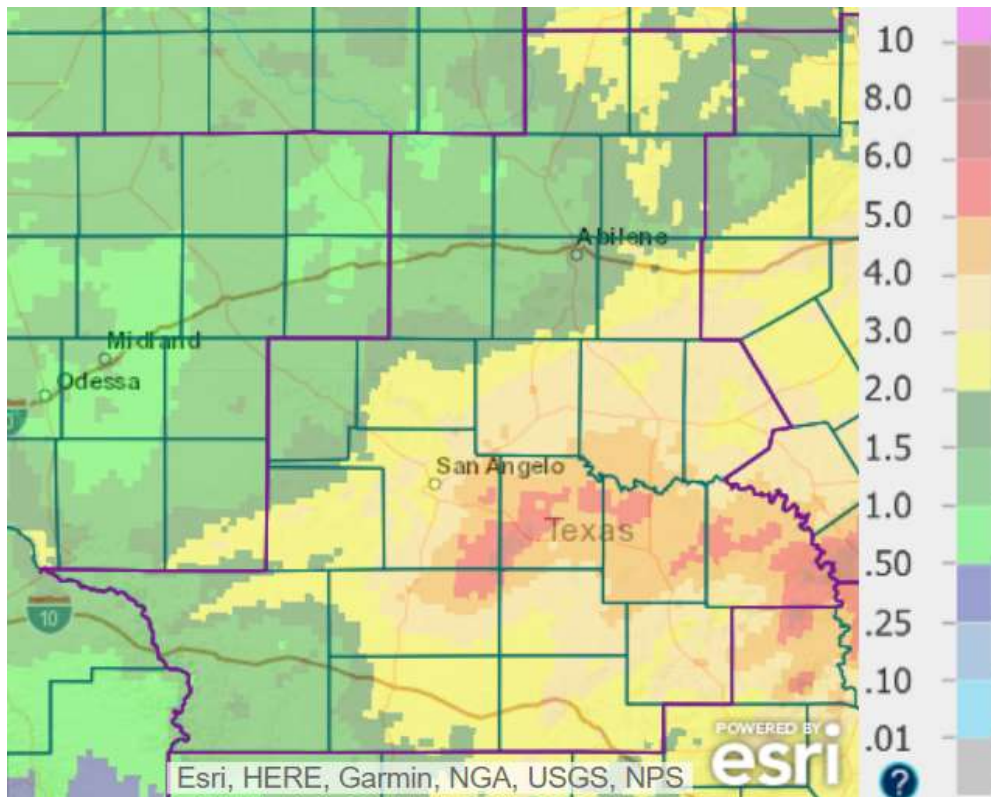


Figure 1: Total Precipitation for November.

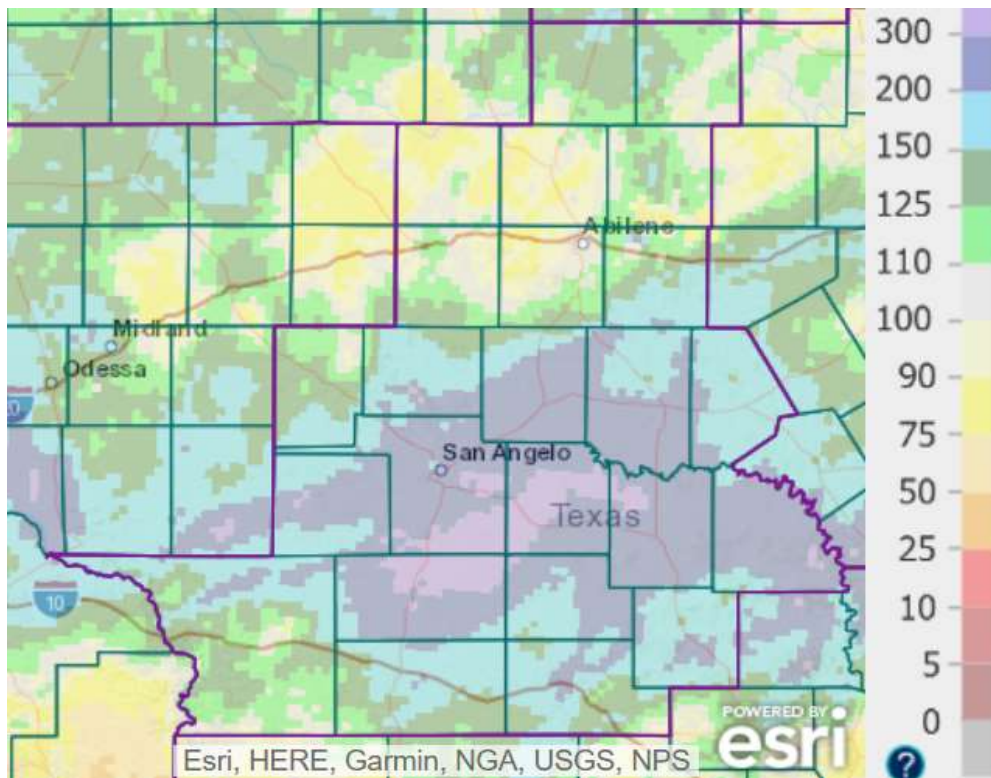


Figure 2: Percentage of Normal Precipitation for November.

Precipitation for November was above to well-above normal across a fairly large part of west-central Texas. The higher monthly rainfall amounts (4-6 inches, with a few locally higher amounts) occurred across the eastern Concho Valley, along the Colorado River southeast of Ballinger, and across McCulloch and San Saba Counties. A significant part of this rainfall was from a wet weather event late in the month (Nov. 24-26).

November 2022 Weather Highlights

Warm and somewhat humid conditions occurred Nov. 3-4, with gusty south winds. This was out ahead of an approaching upper level storm system, from Colorado and New Mexico. Toward midday, scattered showers and thunderstorms developed in the Big Country along a cold front, which was moving east across the area. A band of showers and storms moved east across the Big Country into early afternoon. A severe storm produced quarter size hail in Haskell County (11 miles northeast of Avoca). Farther to the south, scattered showers accompanied the cold front across the northern Concho Valley. Behind the departing cold front, strong, gusty west winds brought an intrusion of much drier air into west-central Texas. Relative humidity values plunged to 10-12 percent at San Angelo by late afternoon. For a large part of west-central Texas, relative humidity dropped to 10-20 percent. Patch blowing dust overspread the Big Country in the late afternoon and early evening, and visibility was reduced to 4-6 miles at some locations.

The table below shows peak wind gusts from around the area on Nov. 4 (12-hour period ending at 711 PM CDT).

Peak wind gusts from around the area are shown in a table posted on the National Weather Service San Angelo social media page.

<https://twitter.com/NWSSanAngelo/status/1588703062906273793/photo/1>



12HR Peak Winds (mph)

San Angelo

Tom Green 1898ft

44

5W Rotan Rotan/Fisher County	43	1E Wall	42
Tierra Alta	41	Abilene	41
Robert Lee	41	Junction	40
Fort Lancaster/Crockett	40	Southwest Coke	39
1 ENE Dyess Afb	39	Brownwood	39
Wall	39	Sweetwater	39
THROCKMORTON 1SW	39	10.3 S Algerita (TWDB)	38
Ozona	38	11SW Sweetwater Roscoe/Western Nolan	38
Sterling City/Sterling County	38	Paint Creek	37
Clyde/Callahan County	37	Fort Chadbourne Coke County	37
5ESE Stamford Stamford/Jones County	37	1.7 SW Robert Lee (TWDB)	36
Brady	36	Mertzon/Irion County	36
7SSW Segovia Segovia/Kimble County	36	1.8 S Hatchel (TWDB)	35
Baird	35	11.2 NE Menard (TWDB)	34
Barnhart	34	Haskell 1NW (Haskell County), TX	34
4.3 S Katemcy (TWDB)	33	4.0 NW Tennyson (TWDB)	33
19.9 W Sonora (TWDB)	33	Coleman Muni	33
San Saba County Municipal Airpor	33	Coleman	32
Ovalo	32	Clyde	32

valid as of Fri Nov 4th 07:11 pm - NWS San Angelo

With clear skies, dry air and diminished winds overnight, temperatures dropped into the 30s for early morning lows Nov. 5 across much of the area.

Warm and humid conditions with breezy south winds occurred Nov. 9-10. Temperatures were above normal and afternoon highs were in the upper 70s to lower 80s. At Abilene, record warm low temperatures were tied on Nov. 8 (66 degrees), and set on Nov. 9 (67 degrees).

An abrupt change to much cooler conditions came on Veteran's Day (Nov. 11), following passage of a strong cold front. Behind the front and with the approach of an upper level disturbance, scattered to numerous showers and thunderstorms occurred during the post-Midnight and morning hours of Nov. 11. These showers and storms occurred mostly south of a line from Big Lake to Robert Lee to Cisco. Rainfall amounts are shown in Fig. X. Rainfall amounts generally varied between one quarter to three

quarters of an inch. With considerable cloud cover and gusty north winds, temperatures on Nov. 11 were in the 40s across the northern half of the area, and dropped into the 30s in the southern half.

A widespread freeze occurred on the early morning of Nov. 12. Clear skies, drier air and diminishing winds overnight allowed temperatures to drop into the upper 20s to lower 30s for overnight lows. For much of the area, this marked the first freeze of the Fall season, and an official end to the growing season. Similar conditions the following night resulted in another widespread freeze across the area.

The weather was somewhat unsettled Nov. 14, when an upper level disturbance tracked just north of the area and with passage of a cold front. Light rain showers occurred in northern and eastern parts of the area. Skies rapidly cleared from the west in the afternoon, and winds were gusty from the west to northwest. Wind gusts of 40 mph were recorded at the San Angelo Airport, and at Mesonet sites at Fort Lancaster and 5 miles west of Rotan.

A cold frontal passage on Nov. 18 brought a reinforcement of cold air to the area. Considerable cloud cover limited temperatures for much of the area to the 40s for highs on Nov. 19, and the upper 30s to upper 40s for highs Nov. 20. At San Angelo, new record cold high temperatures were set on Nov. 19 (41 degrees) and Nov. 20 (39 degrees). With the approach of an upper level disturbance from Mexico and New Mexico, light wintry precipitation occurred on the morning of Nov. 20, across southern and central parts of west-central Texas. The wintry precipitation was a mix of light sleet, snow flurries, and light rain. A trace of snow and sleet occurred in San Angelo. This precipitation became just a cold rain by afternoon, in the form of scattered showers. Cloud cover gradually cleared as the upper level disturbance moved through the area, on the afternoon and evening of Nov. 21.

Drier and warmer conditions followed Nov. 22-23, and afternoon highs were in the 60s.

A cold rain event occurred Nov. 24-26 across the area. With the gradual approach of an upper level storm system from the west and southwest, showers developed and became widespread on the early morning of Nov. 25. Widespread showers continued through the day and night of Nov. 26, ending from south to north on the morning of Nov. 27. A few thunderstorms occurred on Nov. 25, mainly during the late afternoon into the early nighttime hours. The rain was heavy at times. Rainfall amounts for this event are shown in Fig. 3.

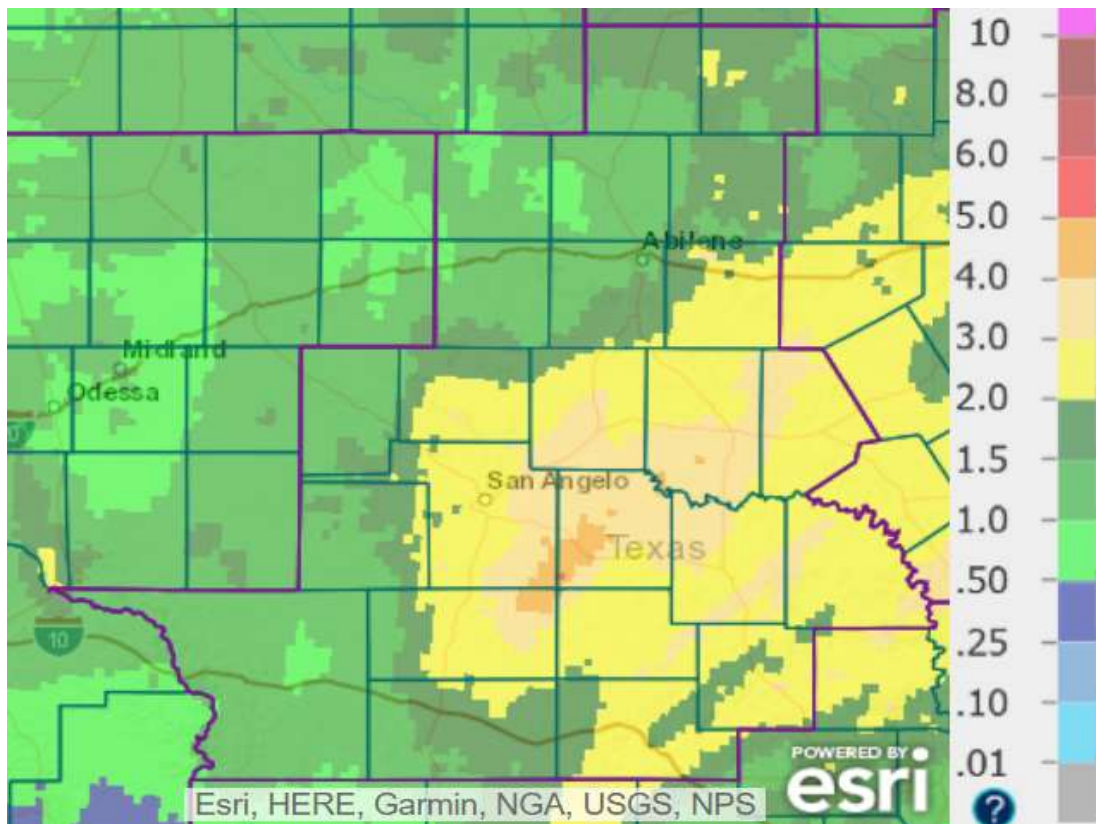


Figure 3: Rainfall Amounts for the 7-day Period ending at 6 AM, Nov. 30.

A new daily rainfall record was set at San Angelo (1.90 inches) on Nov. 25. This rainfall was beneficial in the short term for the area. Dry weather followed with generally clear skies and warmer temperatures Nov. 27-29. Highs Nov. 29 were well-above normal, and in the mid 70s to lower 80s across the area.

A fairly strong cold frontal passage in during the overnight hours of Nov. 29-30 was followed by brisk north winds. Temperatures dropped into mostly the upper 20s to lower 30s for early morning lows Nov. 30. Temperatures remained chilly through the day, and afternoon highs were in the mid 40s to lower 50s across the area.

Highlights for the month are shown in graphics (posted on National Weather Service San Angelo social media), for [Abilene](#) and [San Angelo](#).

[Additional Tabular and Graphical Daily Climate Data](#)