

Climate and Weather Summary for September 2022

Temperatures in September averaged above normal at San Angelo and Abilene. Precipitation was below normal at San Angelo and well-below normal at Abilene. Table 1 summarizes September 2022 temperature, precipitation, and departure from normal for Abilene and San Angelo.

Site	Average Temperature (°F)	Departure from Normal (°F)	Normal Average Temperature (°F)	Total Precipitation (In.)	Departure from Normal (In)	Normal Sep. Precipitation (In.)
Abilene	80.3°	3.5°	76.8°	1.03"	-1.64"	2.67"
San Angelo	78.5°	1.5°	77.0°	1.77"	-0.74"	2.51"

Table 1: Sep. Climate Data for Abilene and San Angelo.

Additional temperature and precipitation data for Abilene and San Angelo is summarized in Table 2.

Site	Warmest High Temperature (°F)	Warmest Low Temperature (°F)	Coollest High Temperature (°F)	Coollest Low Temperature (°F)	Maximum Daily Precipitation (In.)
Abilene	97° on Sep. 6	73° Sep. 2, 18, 20	83° on Sep. 11	57° on Sep. 27	0.38" Sep. 4
San Angelo	96° Sep. 9, 18-20, 22	71° Sep. 1, 2, 17	82 on Sep. 1	51° on Sep. 27	1.48" Sep. 2

Table 2: Additional Sep. Climate Data for Abilene and San Angelo.

- Most of the rainfall occurred in the first several days of the month.
- No record high or low temperatures occurred in September.
- San Angelo and Abilene recorded no days in September with highs at or above 100 degrees.

Maps of total precipitation and percentage of normal precipitation, for June, are shown in Figures 1 and 2 (next page)

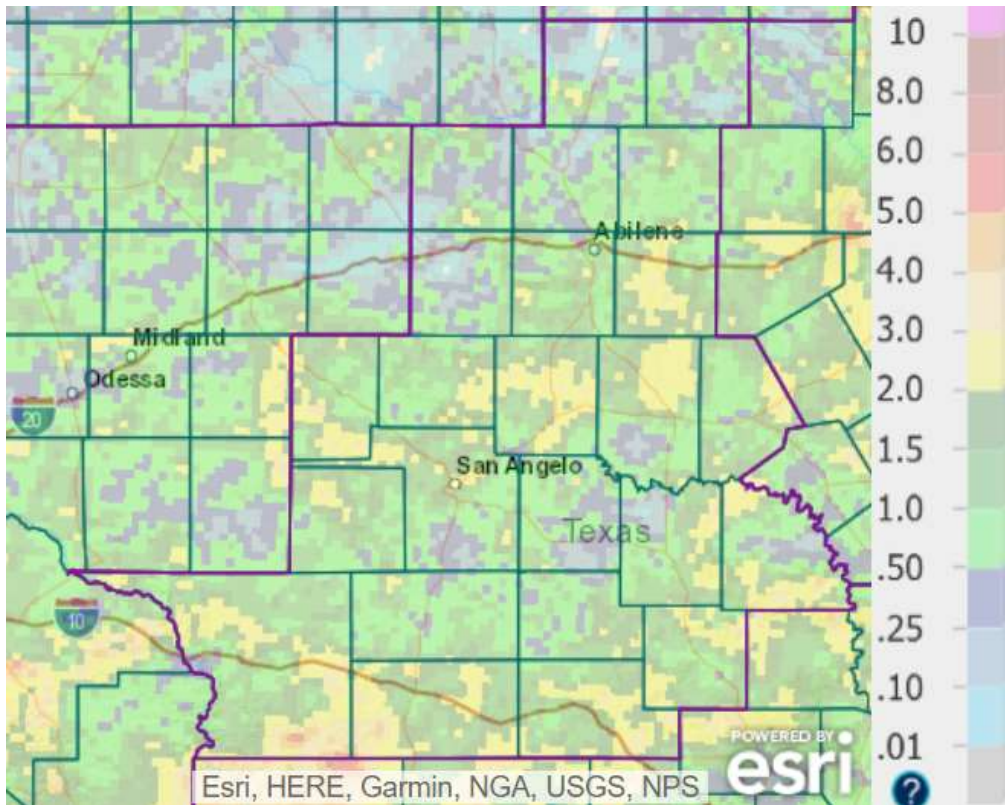


Figure 1: Total Precipitation for September.

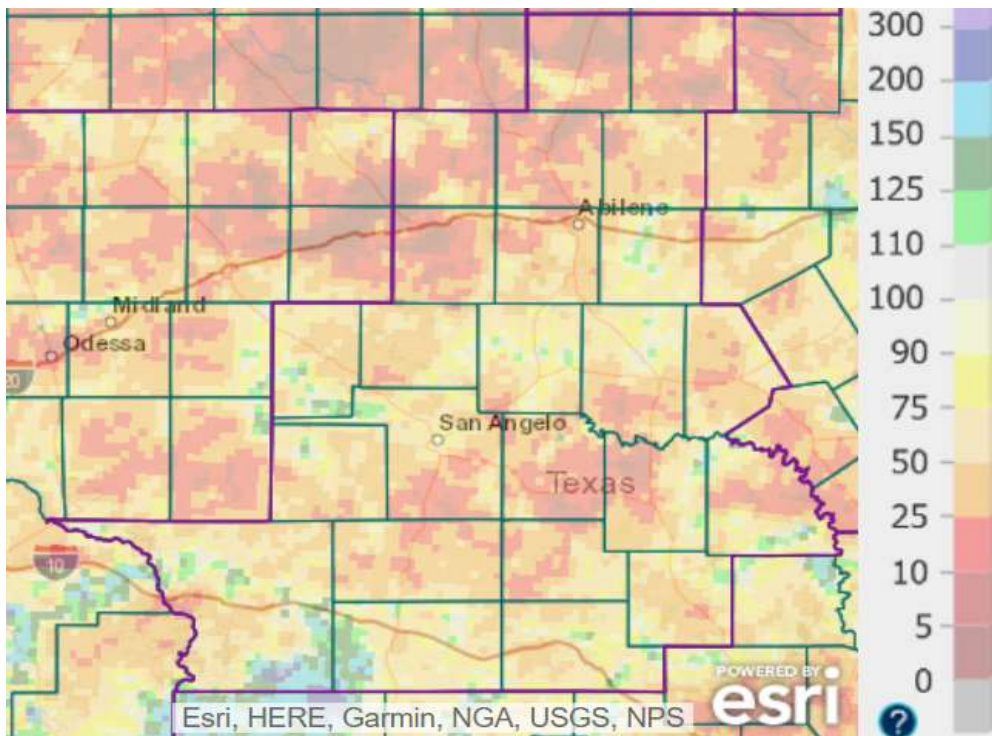


Figure 2: Percentage of Normal Precipitation for September.

Precipitation for September was below normal across much of the area (orange and red shaded areas in Fig. 2). Scattered pockets east of Abilene, and in central and southern parts of the area received above normal rainfall. Most of the rainfall for September occurred during the first several days of the month.

September 2022 Weather Highlights

The pattern was unsettled during the first few days of September, when upper level disturbances interacted with a very moist airmass over the area. Scattered to numerous showers and thunderstorms with heavy rain occurred across various parts of the area. Parts of San Angelo had considerable street flooding in the mid-to-late afternoon of Sep. 2. With considerable cloud cover, daytime temperatures were below normal across much of the area. Highs ranged from the mid 80s to lower 90s, with humid conditions. A somewhat unsettled pattern continued Sep. 3-5, when isolated to scattered showers and thunderstorms occurred (mainly in the afternoon and evening hours) across various parts of the area. Locally heavy rain accompanied some of these showers and storms.

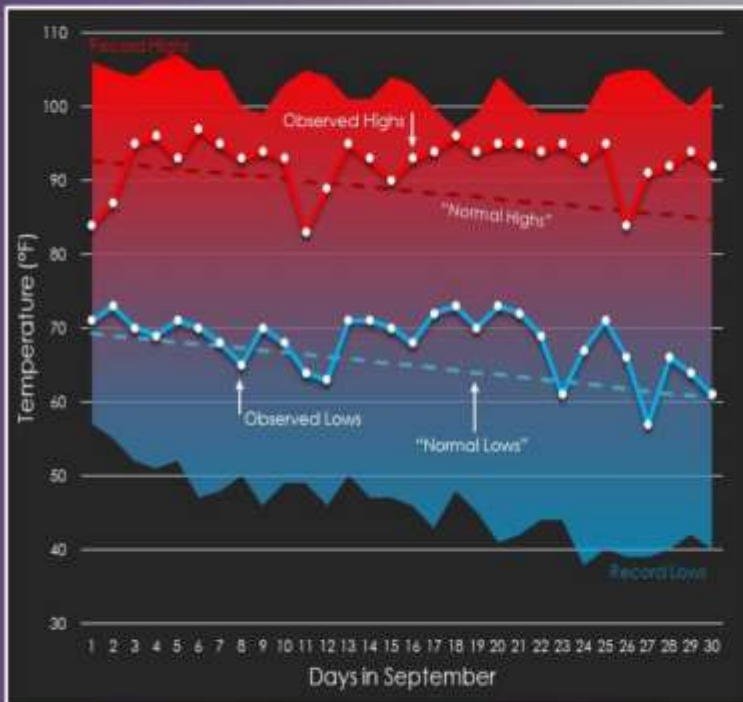
For most of the rest of September, conditions were dry with considerable sunshine and seasonably warm daytime temperatures. Overnight lows were cooler and mostly in the 50s Sep. 27-30, when winds were relatively weak and drier air settled into the area.

Highlights for the month are shown in the graphics below, for Abilene and San Angelo.

September Climate Summary

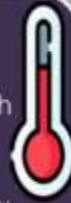
Abilene

Weather Forecast Office
San Angelo, TX
Issued October 1, 2022 11:19 AM CT



Average Temp
80.3° (+3.3°)

- Average High
92.5° (+3.0°)
above normal
- Average Low
68.1° (+3.2°)
above normal



Total September
Precip
1.03" (-1.64")

2022 Precip
8.75" (+1.00")

- 2nd Driest
Jan.-Sept.
Period on
Record



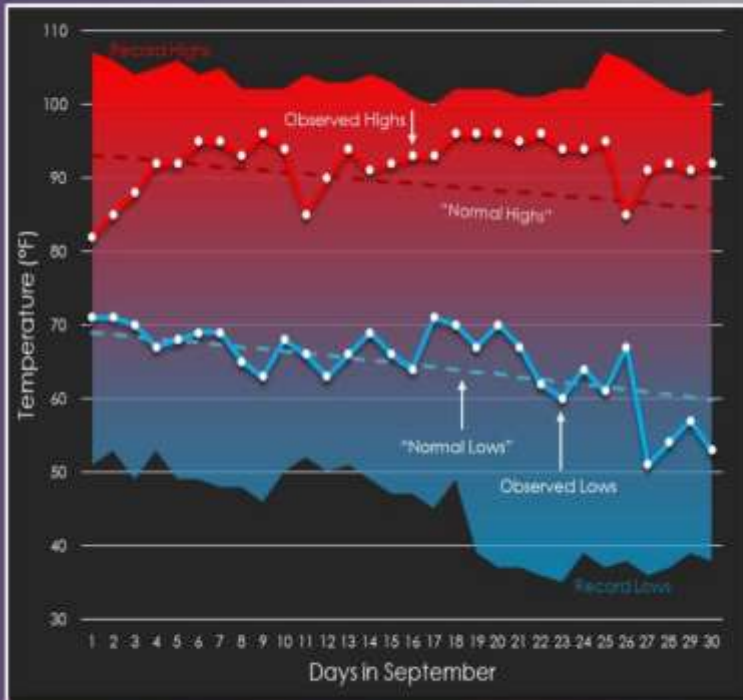
September Climate Summary

San Angelo

Weather Forecast Office

San Angelo, TX

Issued October 1, 2022 11:19 AM CT



Average Temp

78.5° (1.5°)

• Average High

92.1° (2.7°)

(above normal)

• Average Low

65.0° (1.4°)

(below normal)



Total September

Precip

1.77" (4.7%)

2022 Precip

7.58" (19.4%)

• 7th Driest Jan.

-Sept. Period

on Record



NWSSanAngelo

weather.gov/sjt

[Additional Tabular and Graphical Daily Climate Data](#)