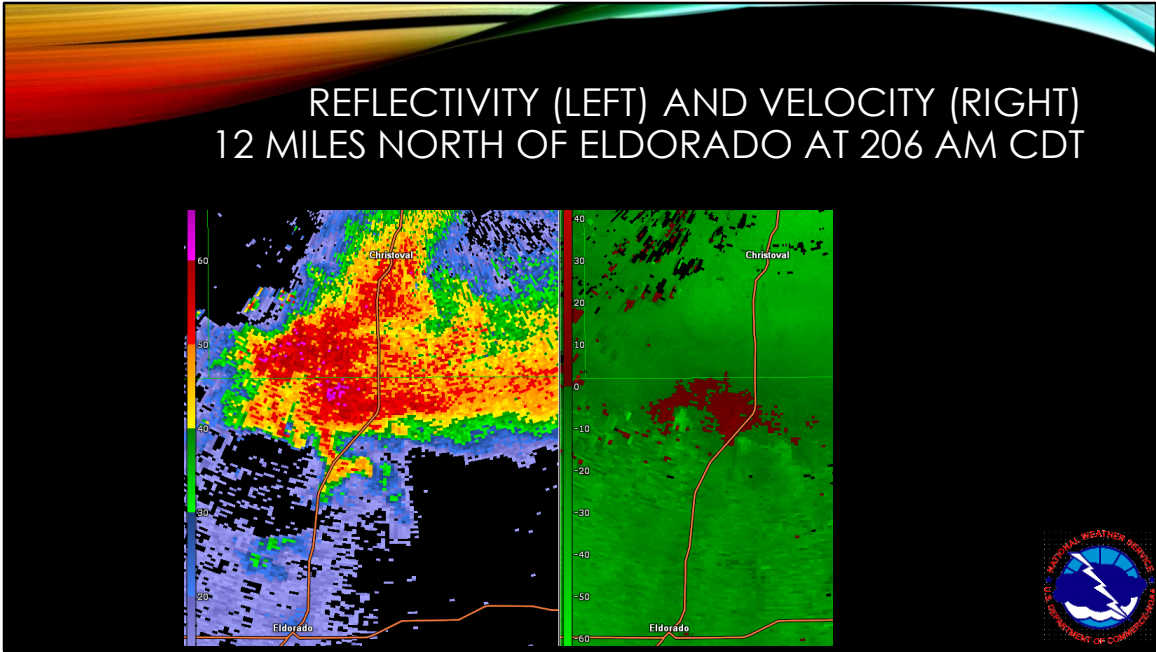


Northern Schleicher County Tornado

REFLECTIVITY (LEFT) AND VELOCITY (RIGHT) 12 MILES NORTH OF ELDORADO AT 206 AM CDT

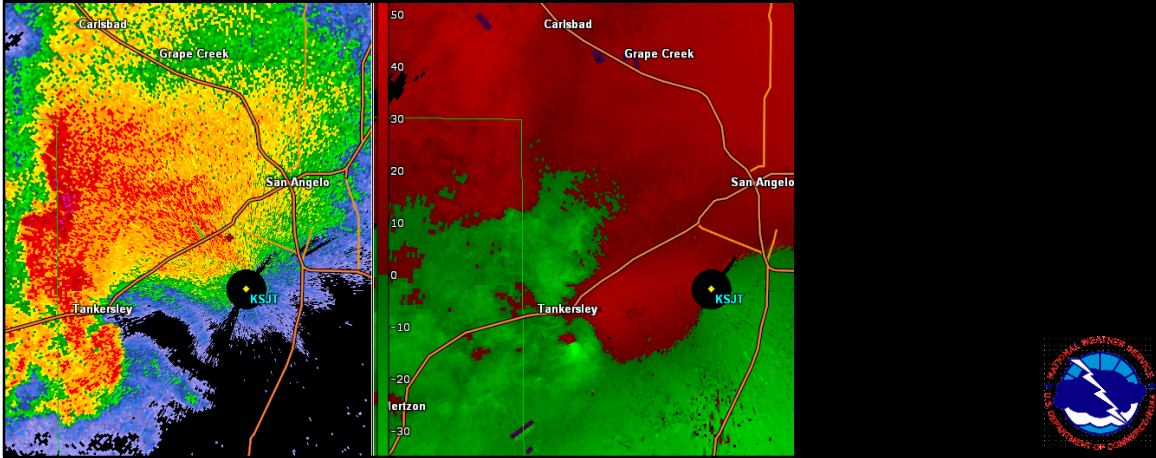


Reflectivity (Left) and velocity (Right) 12 miles north of Eldorado at 206 AM CDT



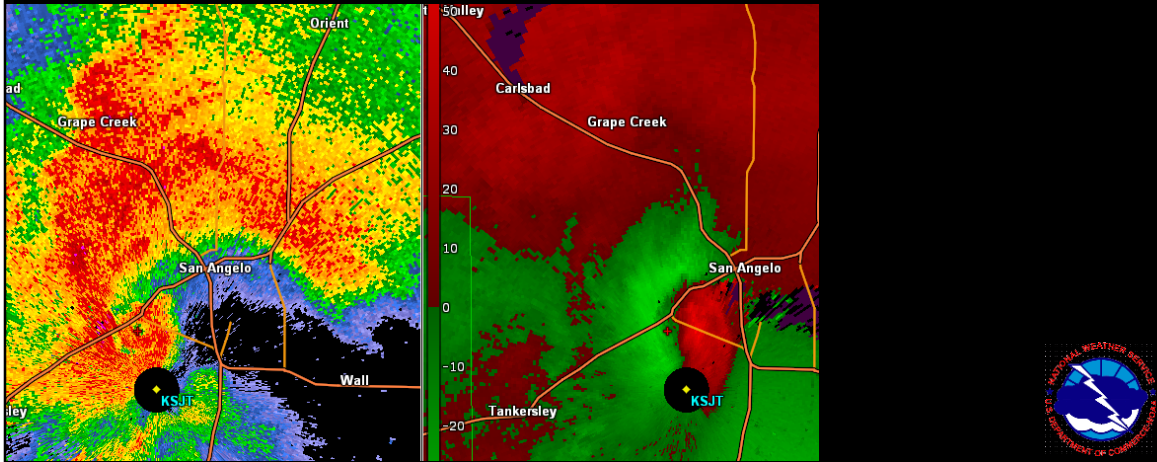
Dove Creek to San Angelo Tornado

REFLECTIVITY (LEFT) AND VELOCITY (RIGHT) DOVE CREEK AT 503 AM CDT



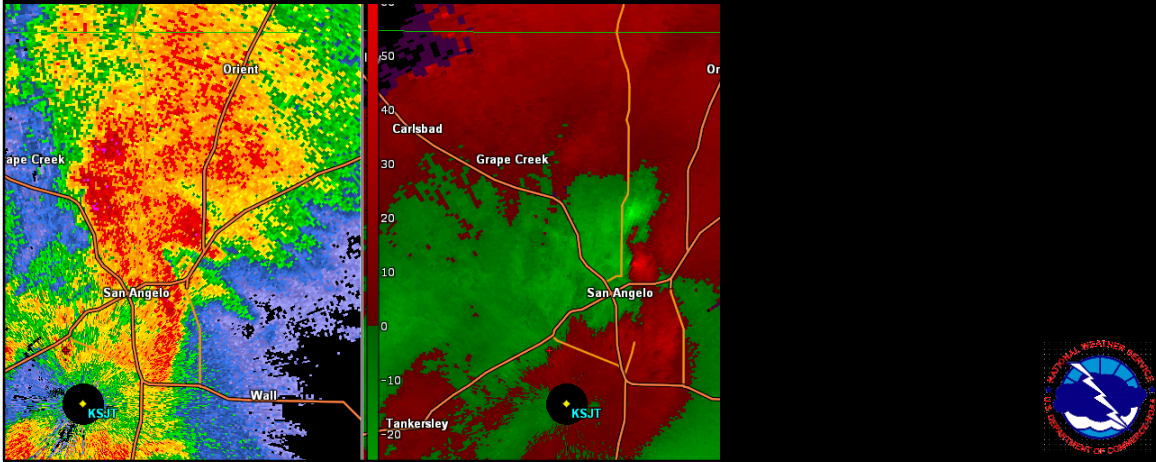
Reflectivity (Left) and Velocity (Right) Dove Creek at 503 AM CDT

REFLECTIVITY (LEFT) AND VELOCITY (RIGHT) SOUTHWEST SAN ANGELO AT 526 AM CDT

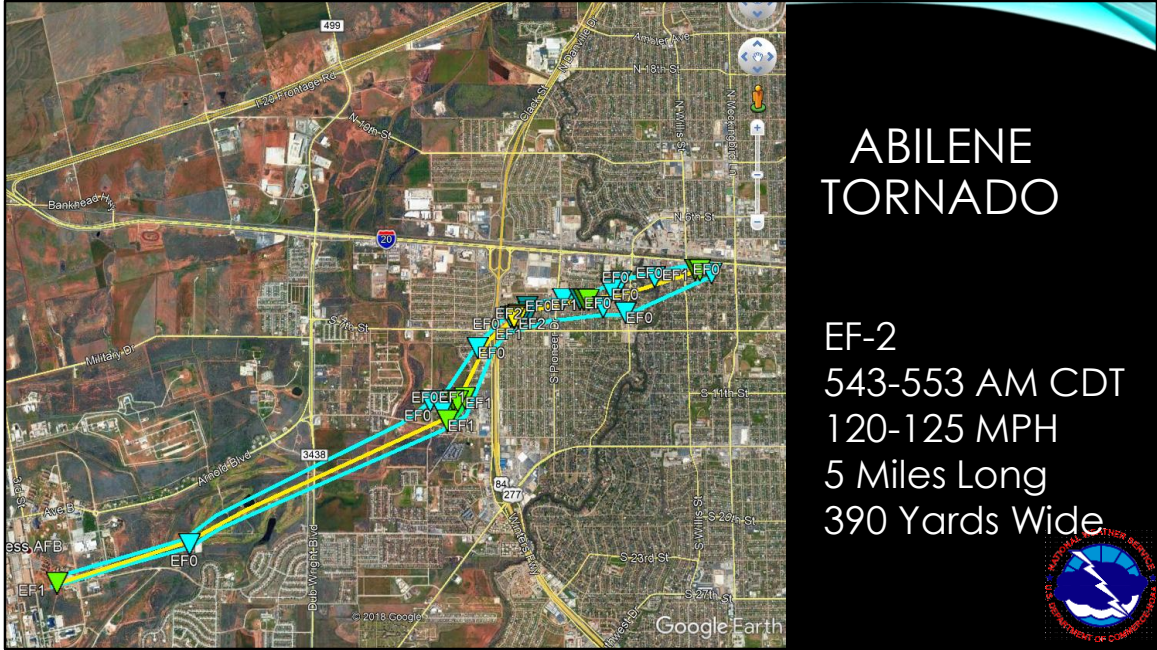


Reflectivity (Left) and Velocity (Right) Southwest San Angelo at 526 AM CDT

REFLECTIVITY (LEFT) AND VELOCITY (RIGHT) BRADFORD ELEMENTARY AT 545 AM CDT

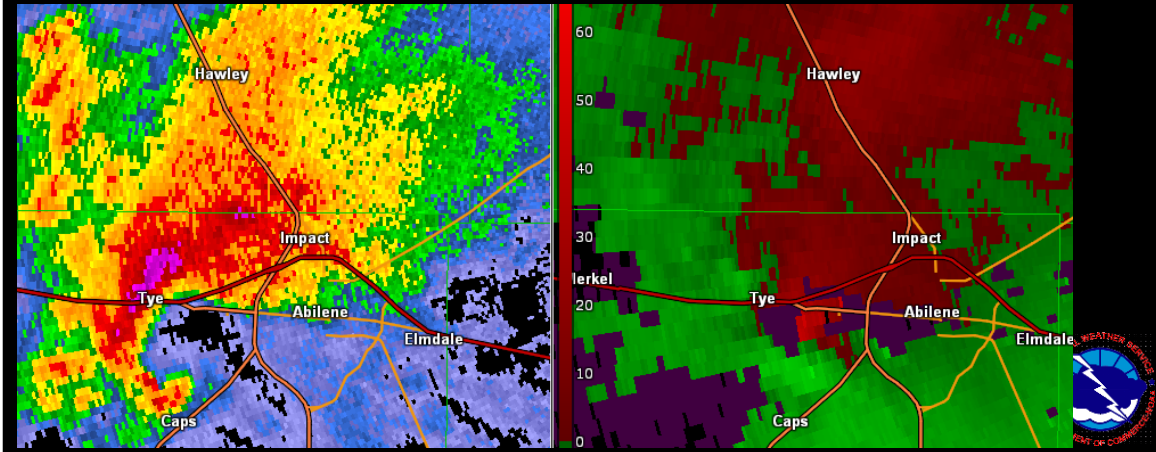


Reflectivity (Left) and Velocity (Right) Bradford Elementary at 545 AM CDT



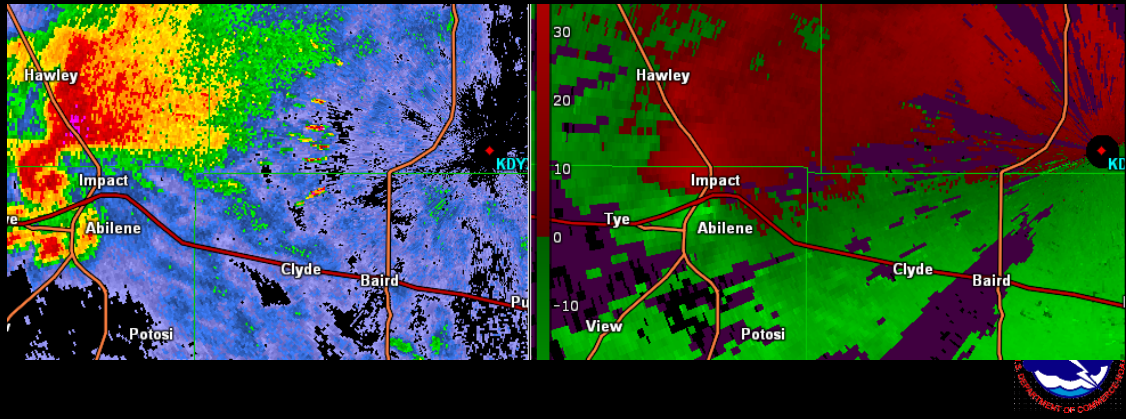
Abilene Tornado

REFLECTIVITY (LEFT) AND VELOCITY (RIGHT) APPROACHING ABILENE AT 540 AM CDT

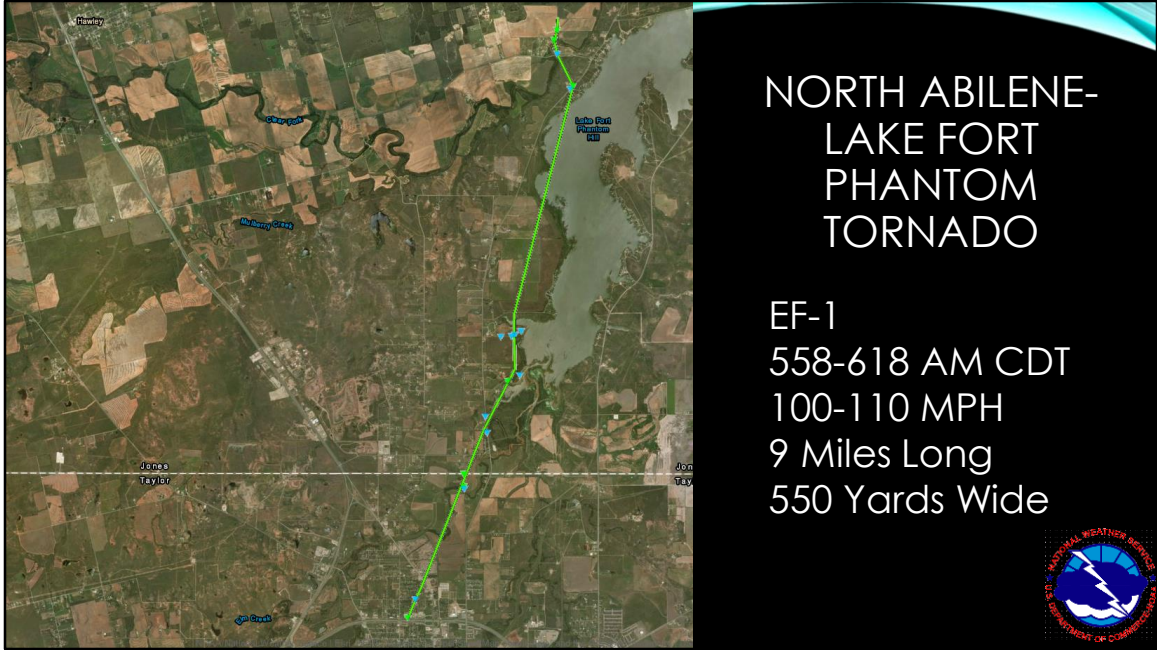


Reflectivity (Left) and velocity (Right) approaching Abilene at 540 AM CDT

REFLECTIVITY (LEFT) AND VELOCITY (RIGHT) ABILENE AT 547 AM CDT

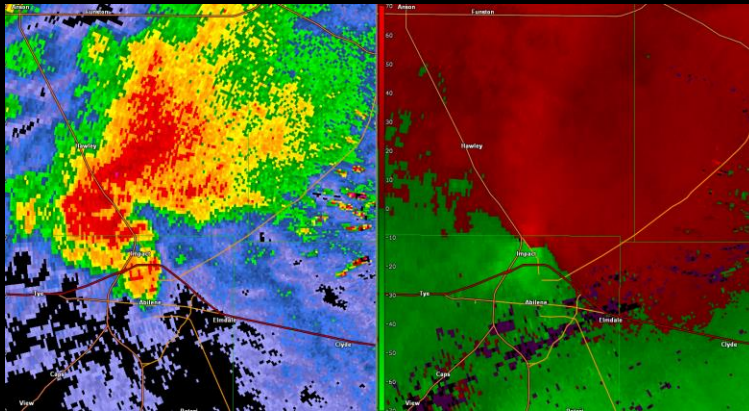


Reflectivity (Left) and Velocity (Right) Abilene at 547 AM CDT



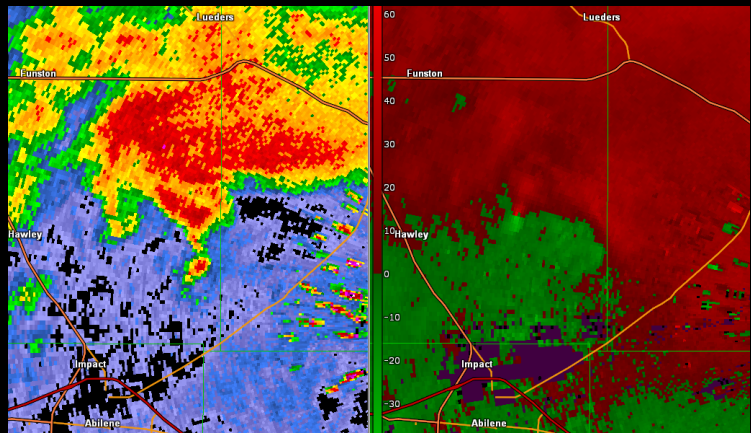
North Abilene to Lake Fort Phantom Tornado

REFLECTIVITY (LEFT) AND VELOCITY (RIGHT) ABILENE AT 559 AM CDT

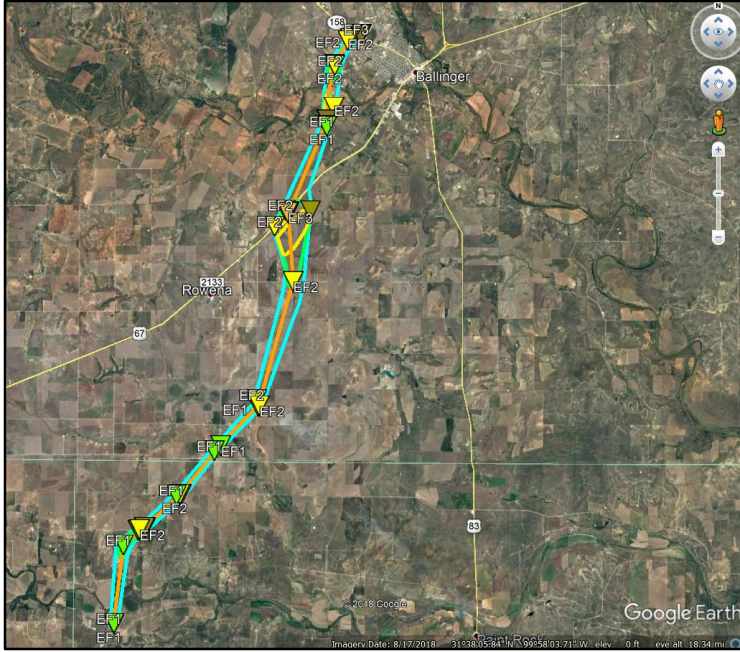


Reflectivity (Left) and velocity (Right) approaching Abilene at 559 AM CDT

REFLECTIVITY (LEFT) AND VELOCITY (RIGHT) JONES COUNTY AT 620 AM CDT



Reflectivity (Left) and Velocity (Right) Jones County at 620 AM CDT

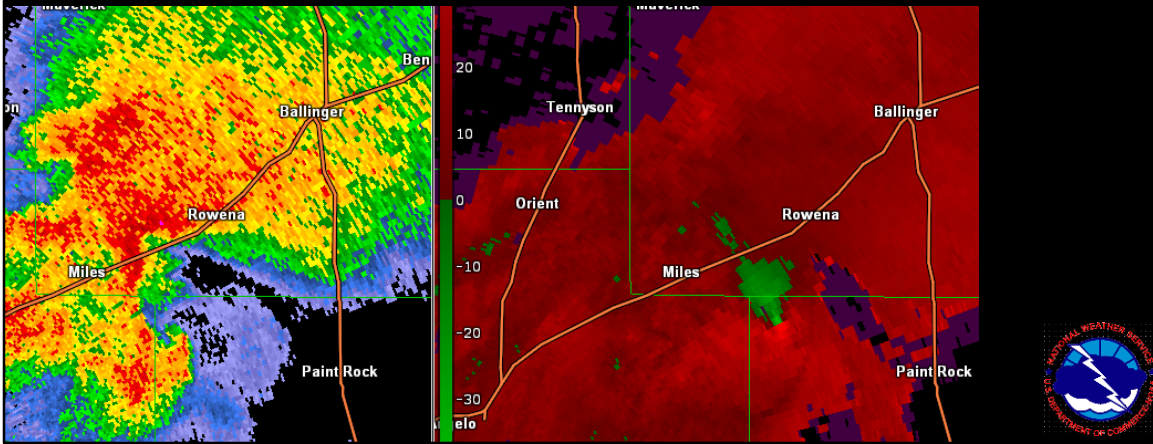


LOWAKE TO BALLINGER TORNADO

EF-3
 652-731 AM CDT
 145 MPH
 19 Miles Long
 1 Mile Wide

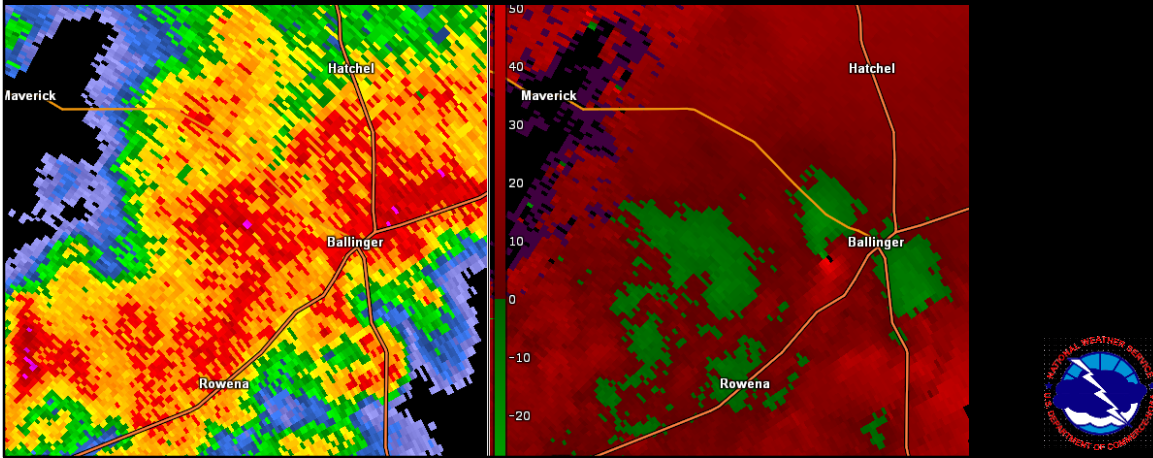


REFLECTIVITY (RIGHT) AND VELOCITY (LEFT) NEAR LOWAKE AT 653 AM CDT

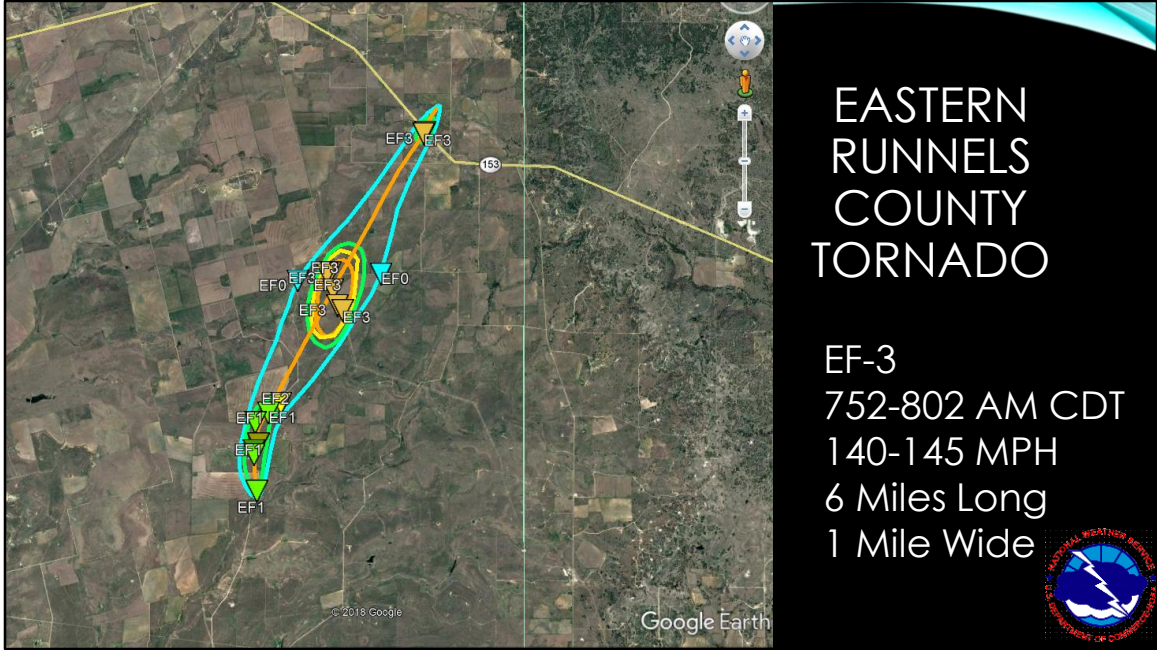


Reflectivity (Right) and velocity (Left) near Lowake at 653 AM CDT

REFLECTIVITY (RIGHT) AND VELOCITY (LEFT) NEAR BALLINGER AT 725 AM CDT

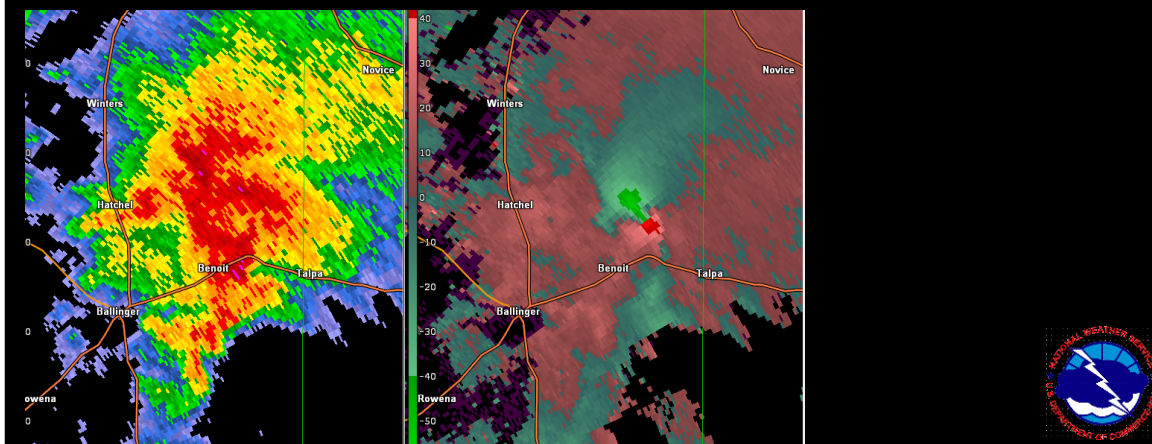


Reflectivity (Right) and velocity (Left) near Ballinger at 725 AM CDT



Eastern Runnels County Tornado

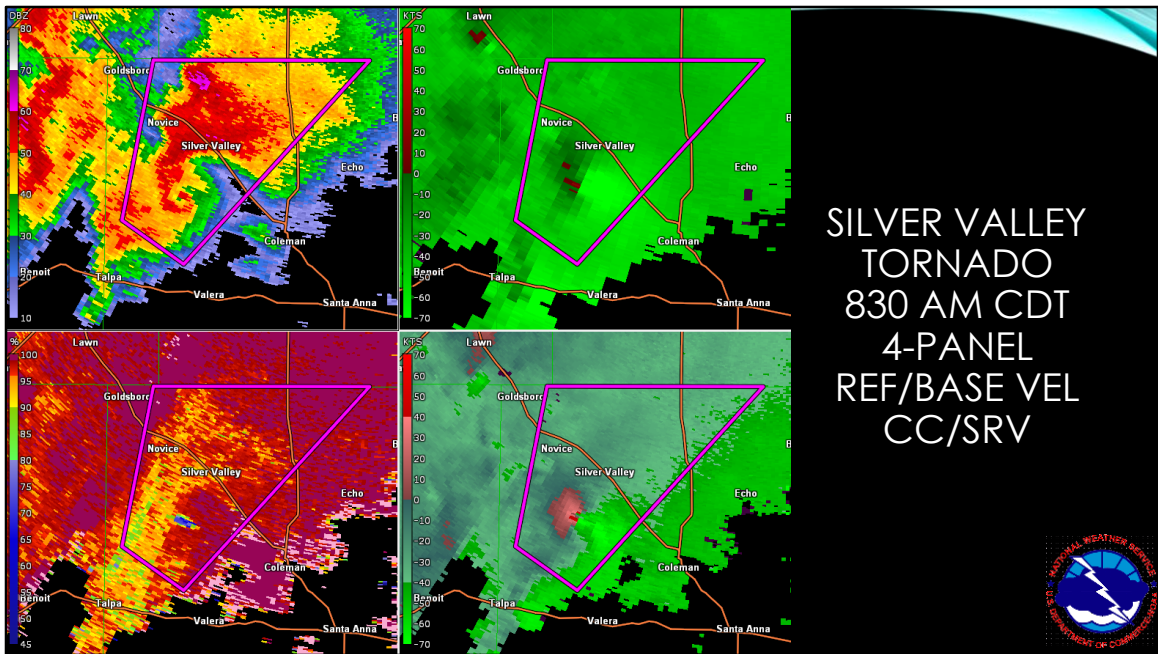
REFLECTIVITY (LEFT) AND STORM RELATIVE VELOCITY (RIGHT) NEAR BENOIT AT 751 AM CDT



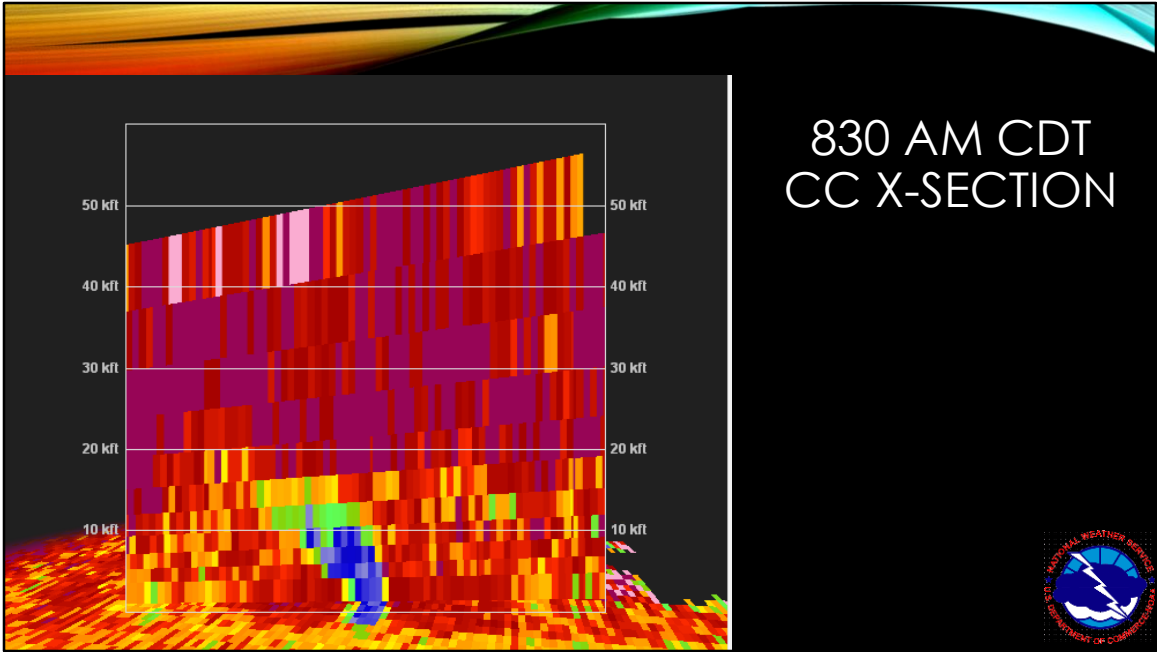
Reflectivity (Left) and Storm Relative Velocity (Right) near Benoit at 751 AM CDT



Silver Valley Tornado



4-Panel Reflectivity (Upper Left) Base Velocity (Upper Right) Correlation Coefficient (Lower Right) and Storm Relative Velocity (Lower Right) at 830 AM CDT



Cross Section of blue circle noted in 830 AM CDT CC. Radar can detect tornado debris being lofted into the air up to 10,000 feet.