



Drought Information Statement for Utah and Uinta County, WY

Valid August 1, 2025

Issued By: National Weather Service Salt Lake City, UT

Contact Information: nws.saltlakecity@noaa.gov

- This product will be updated September 10, 2025 or sooner if drought conditions change significantly.
 - Please see all currently available products at <https://drought.gov/drought-information-statements>.
 - Please visit <https://www.weather.gov/SLC/DroughtInformationStatement> for previous statements.
 - Please visit <https://www.drought.gov/drought-status-updates> for regional drought status updates.
-
- Severe (D2) to extreme (D3) drought continues to spread into northern Utah.
 - Severe (D2) to extreme (D3) drought is likely to continue and potentially expand further across northern Utah over the next month.
 - Significant wildfire potential is above normal across most of Utah and southwest Wyoming through August.





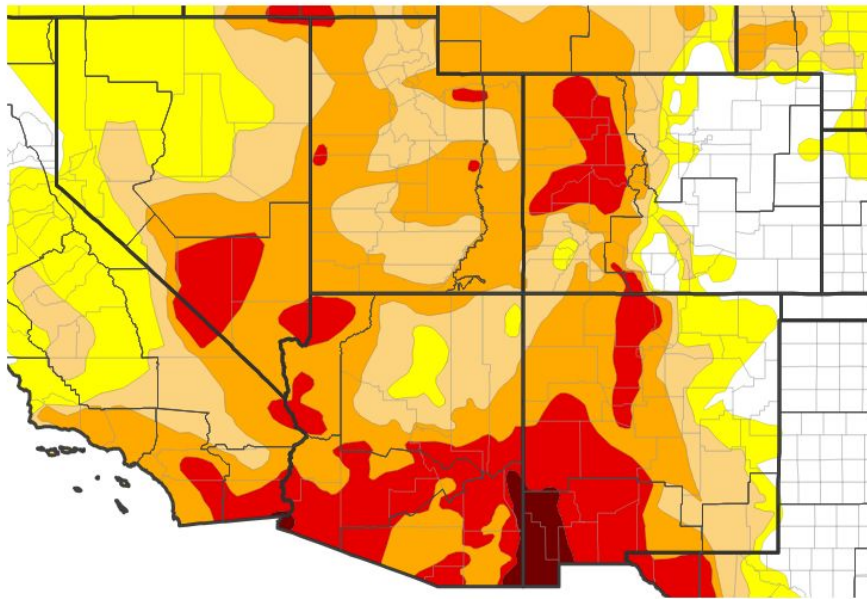
U.S. Drought Monitor

Link to the [latest U.S. Drought Monitor](#) for Utah and Uinta County, WY

- Drought intensity and Extent

- **D4 (Exceptional Drought):** None
- **D3 (Extreme Drought):** Northwestern Box Elder County, far western Juab and far northwestern Millard, northeastern Emery, and most of Duchesne County. (new)
- **D2 (Severe Drought):** Portions of Box Elder, Tooele, Juab, Millard, Beaver, Iron, Piute, Emery, Carbon, Wayne, Summit, Duchesne, and southern Uinta County, WY.
- **D1 (Moderate Drought):** Much of the Wasatch Front, Wasatch Mountains, portions of Millard, Beaver, Iron, Garfield, Kane, and Duchesne Counties.
- **D0: (Abnormally Dry):** None (new)

U.S. Drought Monitor



U.S. Drought Monitor



Source(s): NDMC, NOAA, USDA; image courtesy of Drought.gov

Data Valid: 07/29/25

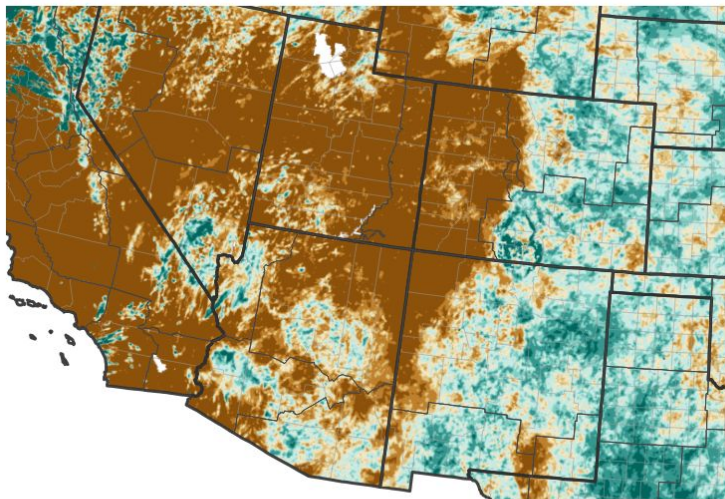




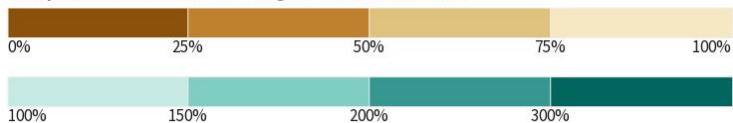
Precipitation

- The North American Monsoon activity has been weak across much of Utah so far this summer.
- Most of Utah is well below normal for precipitation over the last 30 days with exception of a small part of southern Utah and northern Utah near the Idaho border.

30-Day Percent of Normal Precipitation



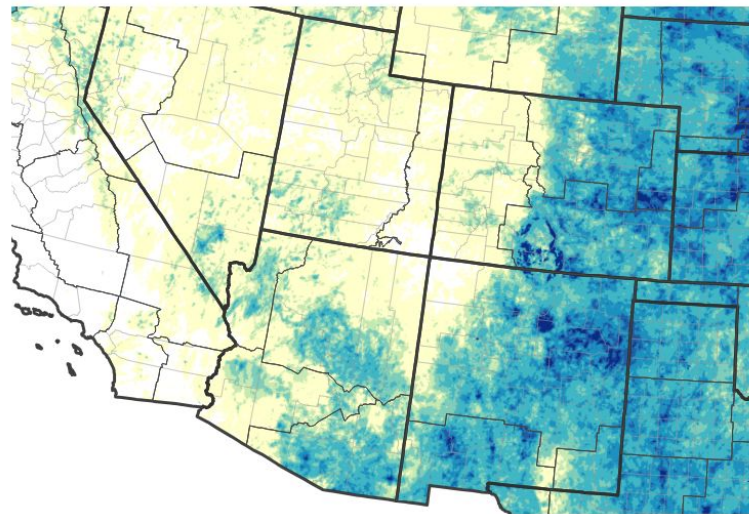
Precipitation Shown as a Percentage of Normal Conditions



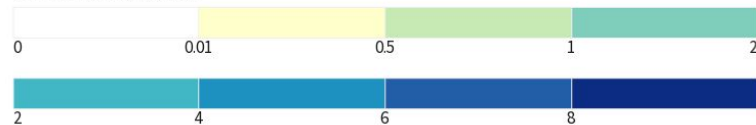
Source(s): National Weather Service Multi-Radar Multi-Sensor System;
image courtesy of Drought.gov

Last Updated: 07/31/25

30-Day Precipitation Accumulations (Inches)



Inches of Precipitation



Source(s): National Weather Service Multi-Radar Multi-Sensor System;
image courtesy of Drought.gov

Last Updated: 07/31/25



National Oceanic and
Atmospheric Administration

U.S. Department of Commerce

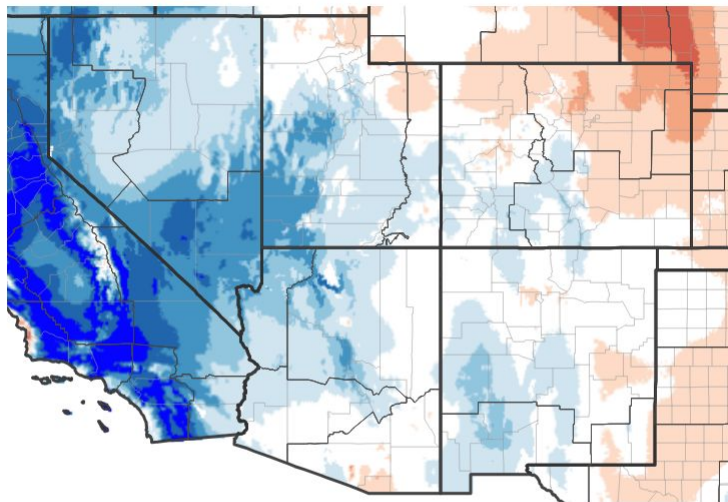
National Weather Service
Salt Lake City, UT



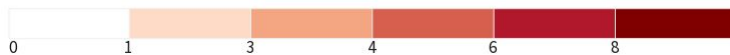
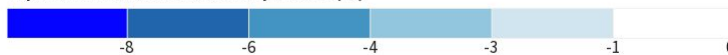
Temperature

- Temperatures across Utah over the last 30 days have averaged largely within 1-2 degrees of normal over the last 30 days.
- Temperatures over the last 7 days ending July 28 have averaged 1 to 6 degrees below normal for all but northeastern Utah.

7-Day Temperature Anomaly



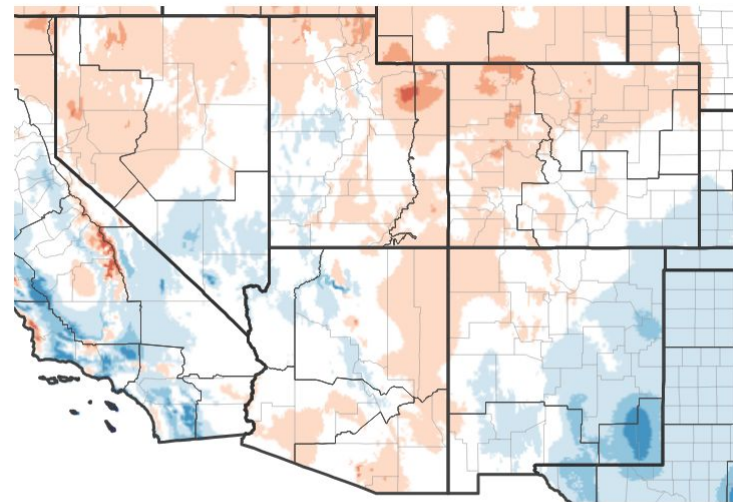
Departure from Normal Max Temperature (°F)



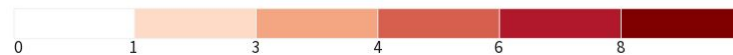
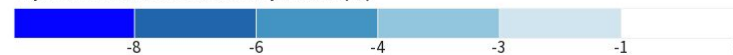
Source(s): NOAA's National Centers for Environmental Information; image courtesy of Drought.gov

Data Valid: 07/28/25

30-Day Temperature Anomaly



Departure from Normal Max Temperature (°F)



Source(s): NOAA's National Centers for Environmental Information; image courtesy of Drought.gov

Data Valid: 07/28/25





Summary of Impacts

Links: See/submit [Condition Monitoring Observer Reports \(CMOR\)](#) and view the [Drought Impacts Reporter](#)

Hydrologic Impacts

- Draw on area reservoirs has been much above normal for the June through July period due to an inefficient spring runoff and increased demand. Statewide average reservoir capacities (excluding Lake Powell and Flaming Gorge) dropped ~12% during the June-July period, versus a typical historical median drawdown of ~2% for that same period. (<https://water.utah.gov/reservoirlevels/>).

Agricultural Impacts

- Farmers and ranchers in Box Elder County report extremely dry and dusty conditions. Ponds and springs have or are drying up. Irrigation water is low to nonexistent. Plant growth for grazing was limited and plant maturity was very early compared to normal. Crop production has been limited to wiped out. Livestock are stressed. Fire risk has increased dramatically.
- Ranchers in Emery County have reported range conditions are poor and very little to no spring growth has occurred. Supplemental feeding of livestock is needed.
- Farmers in Emery County have reported less than normal crop condition. Yield loss is a possibility but the extent is unknown.
- Farmers in Uinta County report heavy degree of loss of yield potential, limited water for irrigation. Fields that receive no water from irrigation storage are completely dry and browned out. Fields that have received irrigation water from storage are producing at about half capacity.
- Ranchers in Uinta County report reduced pasture, early need to use supplemental feed, decreased livestock weight and stress, increased need to haul water. Some ranchers reported the need to sell livestock due to conditions. Range forage has dried out and has very limited spring growth.

Fire Hazard Impacts

- A number of large fires remain across central and southern Utah including the Monroe Canyon, Deer Springs and Forsyth.
- The Utah Governor has declared a 30 day State of Emergency in response to escalating wildfires across the state.
- A Fuels and Fire Behavior Advisory is in effect for central and southern Utah as well as southwest Wyoming below 8000 feet, where fuel conditions are significantly drier and more volatile than normal for mid-July. This includes the Dixie, Fishlake, and Manti LaSal National Forests, Zion and Bryce Canyon National Parks, and BLM lands including Color Country, Canyon Country, Arizona Strip and Paria River Districts.

Other Impacts

- There are no known impacts at this time.

Mitigation Actions

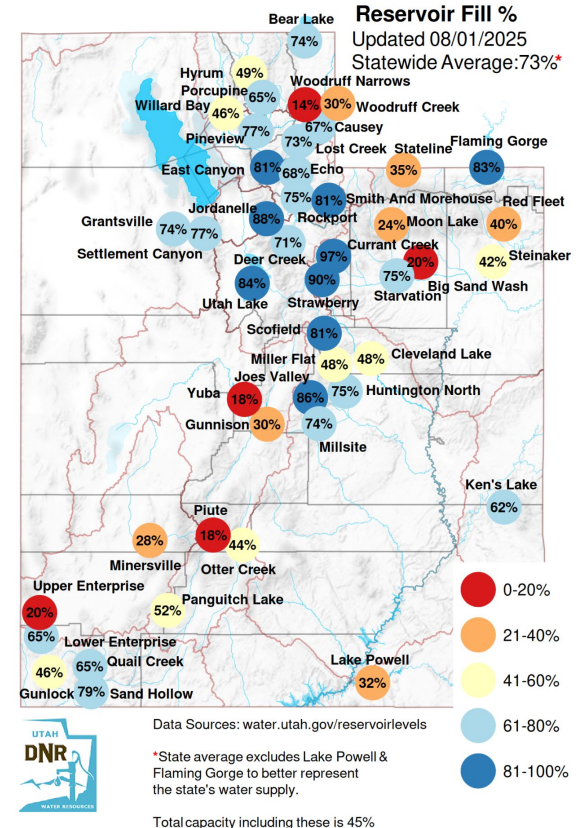
- Please refer to your municipality and/or water provider for mitigation information.





Hydrologic Conditions and Impacts

- Reservoir levels continue to fall through July. Across far northern Utah, reservoir levels average around 60-90%, with the Bear River Valley of Utah reservoirs closer to 14-30%.
- Further south, the Wasatch, Stansbury and Oquirrh Mountain reservoirs are averaging between 70-85%.
- The Uinta Mountain Reservoirs are averaging near 85% on the west side to near 30% on the east side.
- The Wasatch Plateau reservoirs are averaging near 60-90%, while the reservoirs from Yuba south to Piute are running between 20-30%.
- Across southern Utah, reservoirs are generally running around 50-80%, with Upper Enterprise and Lake Powell averaging 20-35%.

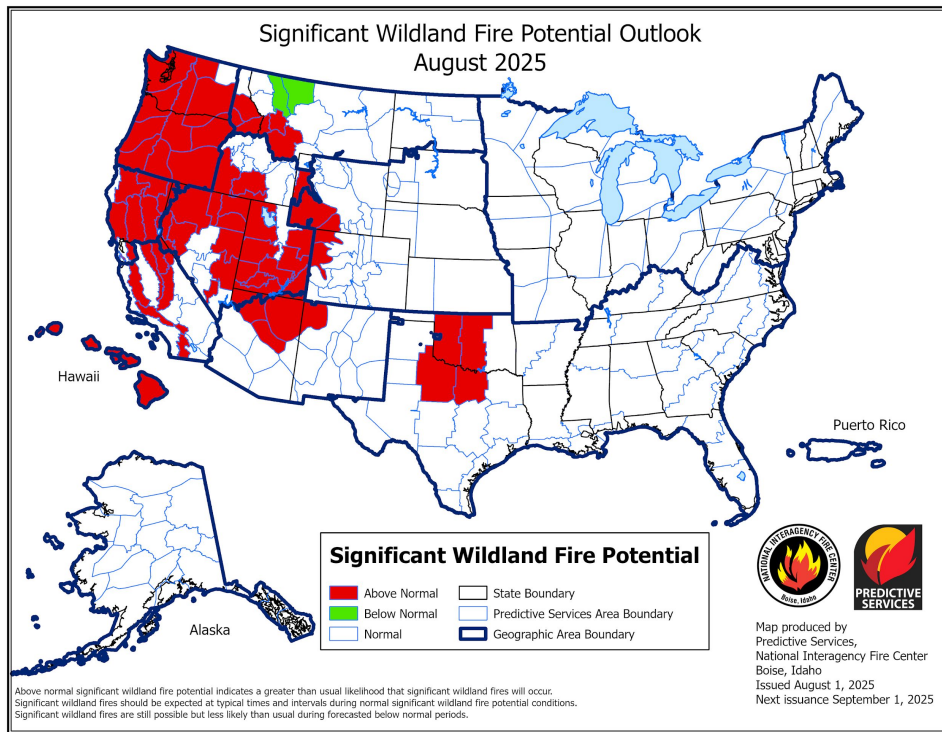




Fire Hazard Impacts

Link to [Wildfire Potential Outlooks from the National Interagency Coordination Center](#).

- Significant wildland fire potential will remain above normal across most of Utah and southwest Wyoming through August.



National Oceanic and
Atmospheric Administration

U.S. Department of Commerce

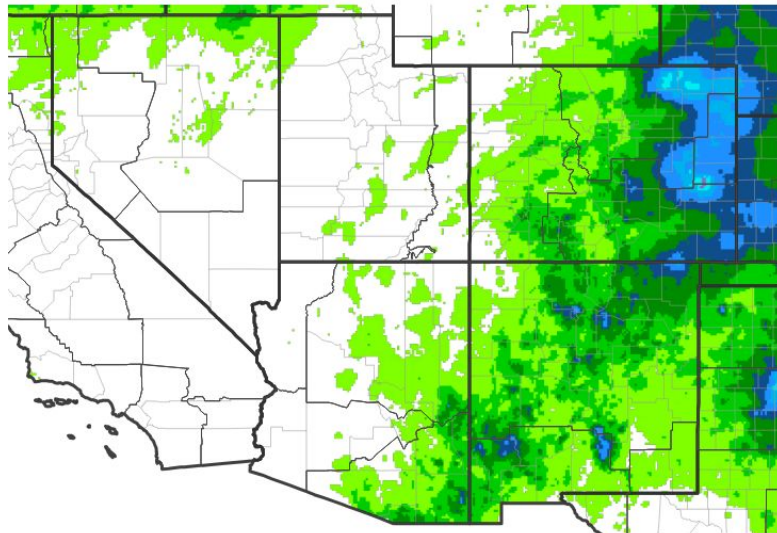
National Weather Service
Salt Lake City, UT



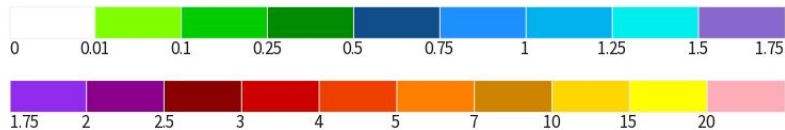
Seven Day Precipitation Forecast

- Little to no precipitation is expected through the next one to two weeks across Utah.

7-Day Quantitative Precipitation Forecast for July 31, 2025–August 7, 2025



Predicted Inches of Precipitation



Source(s): National Weather Service Weather Prediction Center; image courtesy of Drought.gov

Last Updated: 07/31/25



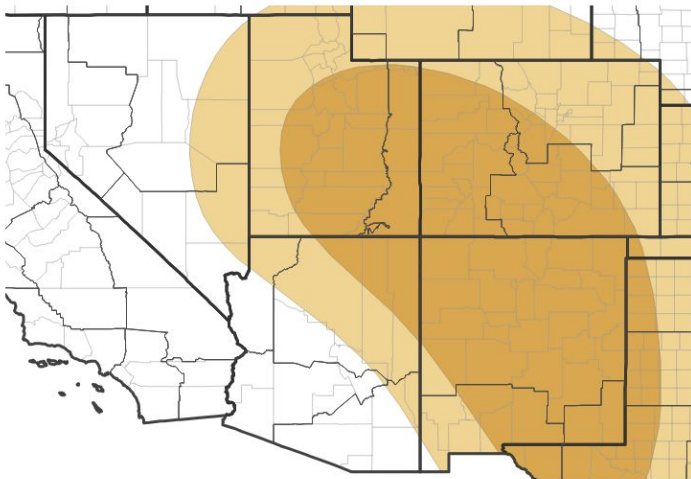


Long-Range Outlooks

The latest monthly and seasonal outlooks can be found on the [CPC homepage](#)

- The outlook for August features odds heavily stacked toward above normal temperatures continuing across Utah and Uinta County, WY.
- Odds favor below normal precipitation through the entire state for August.

Monthly Precipitation Outlook for August 1, 2025–August 31, 2025



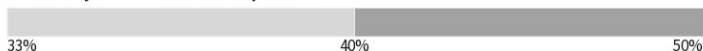
Probability of Below-Normal Precipitation



Probability of Above-Normal Precipitation



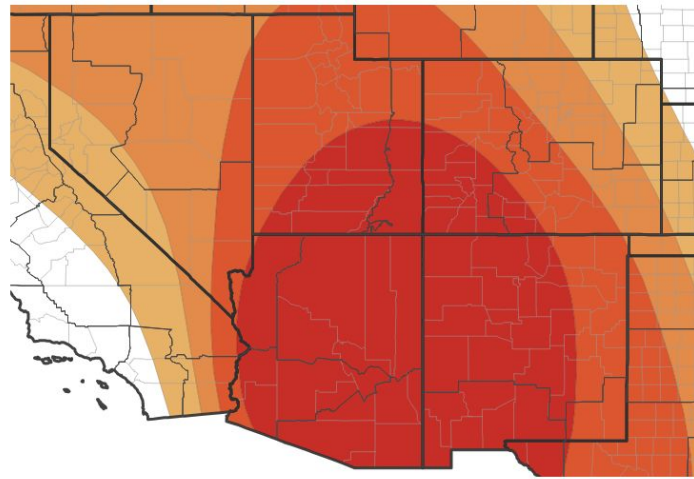
Probability of Near-Normal Precipitation



Source(s): Climate Prediction Center; image courtesy of Drought.gov

Last Updated: 07/31/25

Monthly Temperature Outlook for August 1, 2025–August 31, 2025



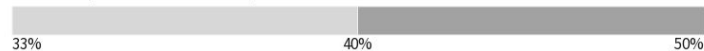
Probability of Below-Normal Temperatures



Probability of Above-Normal Temperatures



Probability of Near-Normal Temperatures



Source(s): Climate Prediction Center; image courtesy of Drought.gov

Last Updated: 07/31/25



**National Oceanic and
Atmospheric Administration**
U.S. Department of Commerce

National Weather Service
Salt Lake City, UT

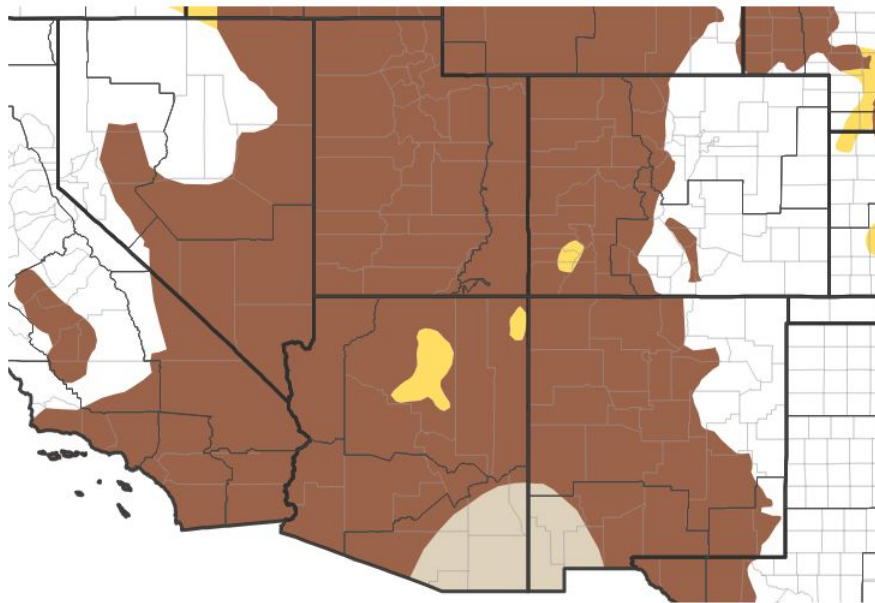


Drought Outlook

The latest monthly and seasonal outlooks can be found on the [CPC homepage](#)

- Drought is expected to persist or worsen across Utah and Uinta County, WY through the end of October.

Seasonal (3-Month) Drought Outlook for July 31, 2025–October 31, 2025



Drought Is Predicted To...



Source(s): Climate Prediction Center; image courtesy of Drought.gov

Last Updated: 07/31/25

Links to the latest:

[Climate Prediction Center Monthly Drought Outlook](#)

[Climate Prediction Center Seasonal Drought Outlook](#)



National Oceanic and
Atmospheric Administration
U.S. Department of Commerce

National Weather Service
Salt Lake City, UT