



Drought Information Statement for Utah and Uinta County, WY

Valid September 5, 2025

Issued By: National Weather Service Salt Lake City, UT

Contact Information: nws.saltlakecity@noaa.gov

- This product will be updated October 5, 2025 or sooner if drought conditions change significantly.
- Please see all currently available products at <https://drought.gov/drought-information-statements>.
- Please visit <https://www.weather.gov/SLC/DroughtInformationStatement> for previous statements.
- Please visit <https://www.drought.gov/drought-status-updates> for regional drought status updates.
- Severe (D2) to extreme (D3) drought continues to spread across Utah and Uinta County, WY.
- Severe (D2) to extreme (D3) drought is likely to continue and potentially expand further over the next month.
- Soil moisture is an important aspect for runoff efficiency and remains well below normal levels across eastern Utah moving into fall.



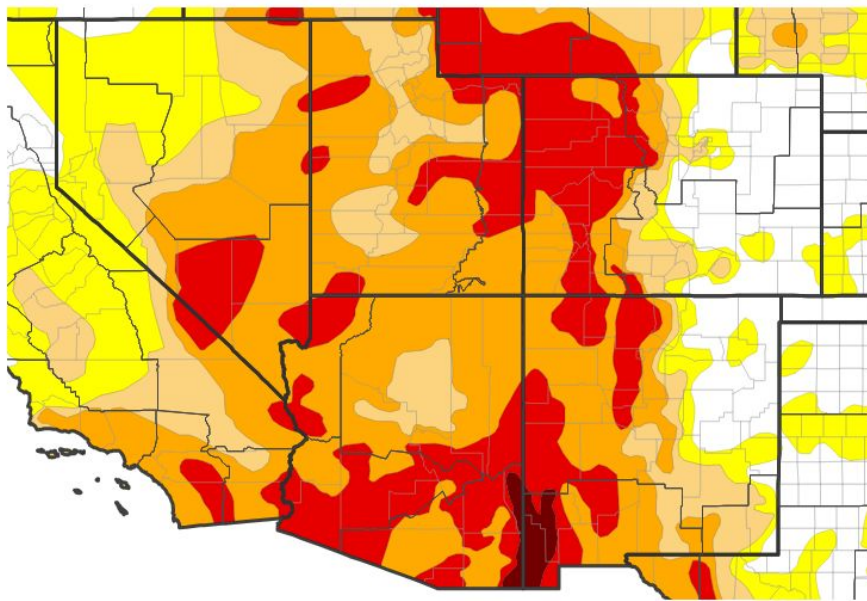


U.S. Drought Monitor

Link to the [latest U.S. Drought Monitor](#) for Utah and Uinta County, WY

- Drought intensity and Extent
 - **D4 (Exceptional Drought):** None.
 - **D3 (Extreme Drought):** Uinta County, WY, northwestern Box Elder, northern Cache, northern Tooele, western Juab, northwestern Millard, southern Carbon, northern Emery, eastern Sevier, eastern Sanpete, and much of Washington County.
 - **D2 (Severe Drought):** Most of Utah.
 - **D1 (Moderate Drought):** Wasatch Front, eastern Juab, southern Duchesne, southeastern Millard, eastern Beaver, northeastern Iron, most of Piute, and northwestern Garfield County.
 - **D0: (Abnormally Dry):** None.

U.S. Drought Monitor



U.S. Drought Monitor



Source(s): NDMC, NOAA, USDA; image courtesy of Drought.gov

Data Valid: 09/02/25

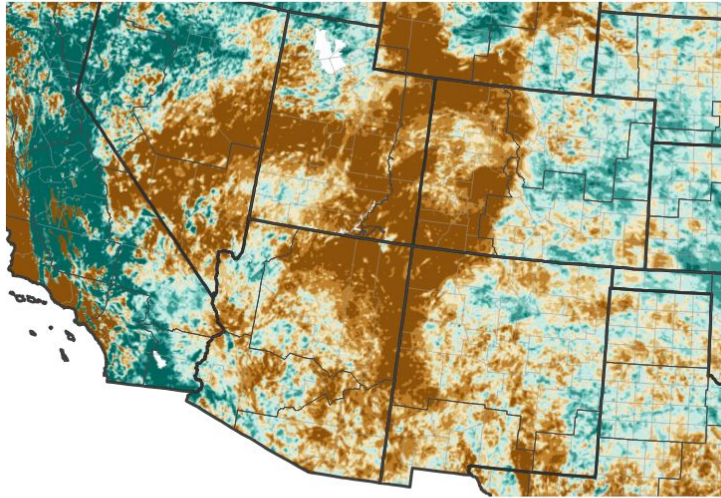




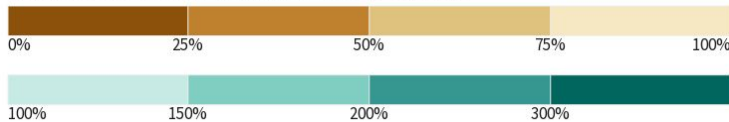
Precipitation

- Northern and southwestern Utah saw above normal precipitation over the last 30 days.
- The remainder of the state continued to see little precipitation.

30-Day Percent of Normal Precipitation



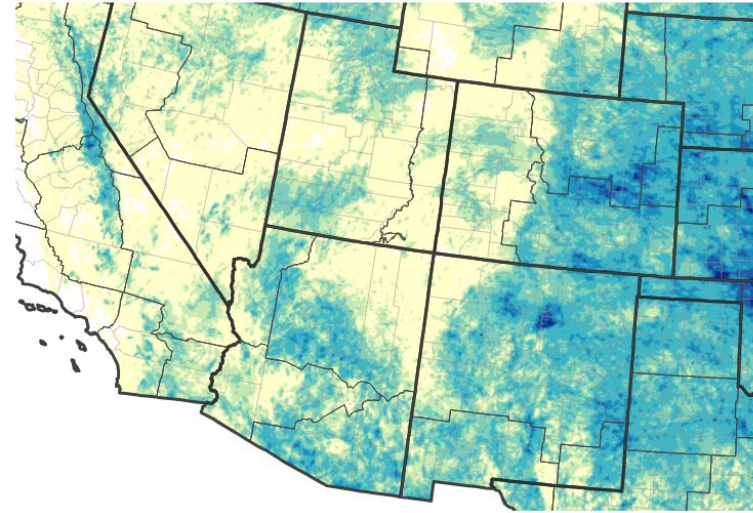
Precipitation Shown as a Percentage of Normal Conditions



Source(s): National Weather Service Multi-Radar Multi-Sensor System;
image courtesy of Drought.gov

Last Updated: 09/04/25

30-Day Precipitation Accumulations (Inches)



Inches of Precipitation



Source(s): National Weather Service Multi-Radar Multi-Sensor System;
image courtesy of Drought.gov

Last Updated: 09/04/25



National Oceanic and
Atmospheric Administration
U.S. Department of Commerce

National Weather Service
Salt Lake City, UT



Summary of Impacts

Links: See/submit [Condition Monitoring Observer Reports \(CMOR\)](#) and view the [Drought Impacts Reporter](#)

Hydrologic Impacts

- Draw on area reservoirs continues to run above normal for the June through August period due to an inefficient spring runoff and increased demand. Statewide average reservoir capacities (excluding Lake Powell and Flaming Gorge) dropped ~21% during the June-August period, versus a typical historical median drawdown of ~15% for that same period. (<https://water.utah.gov/reservoirlevels/>).
- Streamflows for the majority of creeks, rivers, and streams across the state continue to run below to much below normal compared to those currently measured at "normal" or "above normal". (<https://www.usgs.gov/centers/utah-water-science-center>).
- Extremely low soil moisture values exist across much of eastern Utah, with values ranging from 8-55% of median for this time of year. Other areas of the state have experienced short term improvement from recent precipitation and have climbed to near normal conditions. (<https://www.nrcs.usda.gov/utah/snow-survey>)

Agricultural Impacts

- Farmers and ranchers in Box Elder County report extremely dry and dusty conditions. Ponds and springs have or are drying up. Irrigation water is low to nonexistent. Plant growth for grazing was limited and plant maturity was very early compared to normal. Crop production has been limited to wiped out. Livestock are stressed. Fire risk has increased dramatically.
- Ranchers in Emery County have reported range conditions are poor and very little to no spring growth has occurred. Supplemental feeding of livestock is needed.
- Farmers in Emery County have reported less than normal crop condition. Yield loss is a possibility but the extent is unknown.
- Farmers in Uinta County report heavy degree of loss of yield potential, limited water for irrigation. Fields that receive no water from irrigation storage are completely dry and browned out. Fields that have received irrigation water from storage are producing at about half capacity.
- Ranchers in Uinta County report reduced pasture, early need to use supplemental feed, decreased livestock weight and stress, increased need to haul water. Some ranchers reported the need to sell livestock due to conditions. Range forage has dried out and has very limited spring growth.

Fire Hazard Impacts

- Monsoon moisture during the latter half of August increased fuel moistures and reduced the chance for significant fire impacts across the state.

Other Impacts

- There are no known impacts at this time.

Mitigation Actions

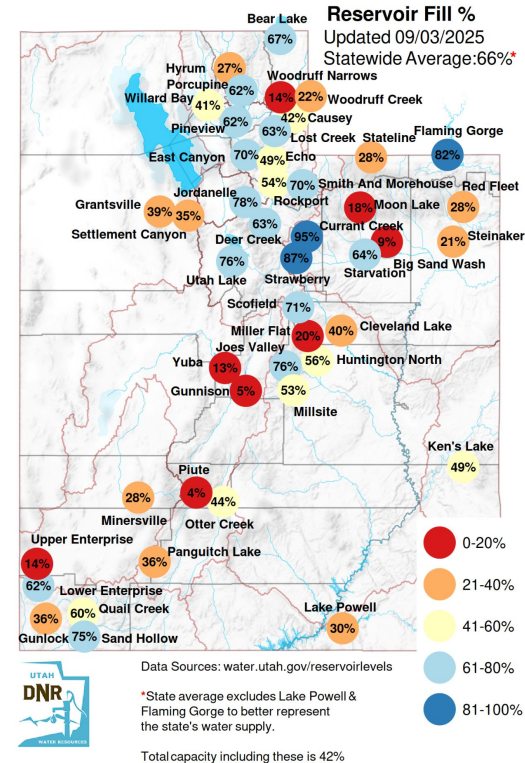
- Please refer to your municipality and/or water provider for mitigation information.





Hydrologic Conditions and Impacts

- Reservoir draw over the last month has reduced capacity statewide, most significantly in lower elevation reservoirs in central and southern Utah.
- Most high elevation reservoirs across northern and central Utah continue to average around 60-75% with the exception of Moon Lake and Stateline, which are both averaging between 15-25%.
- Most large lower elevation reservoirs in northern Utah are averaging between 60-80%.
- Lower elevation reservoirs in central and southern Utah are averaging between 4-36%, with Otter Creek, Lower Enterprise, and Sand Hollow averaging between 45-75%.

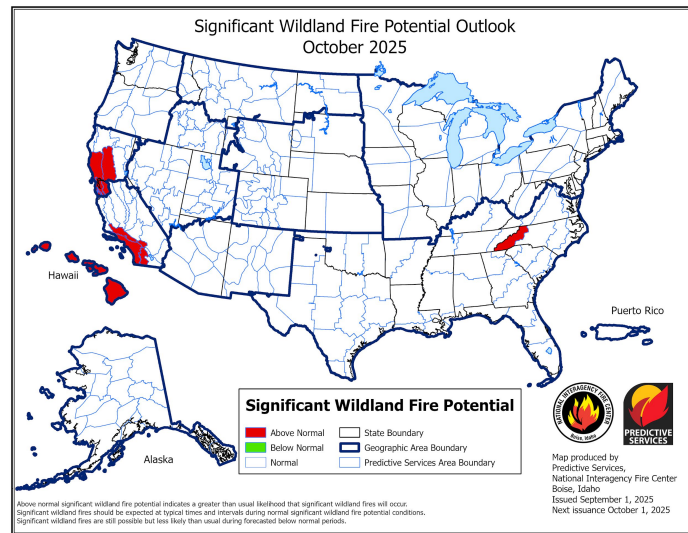
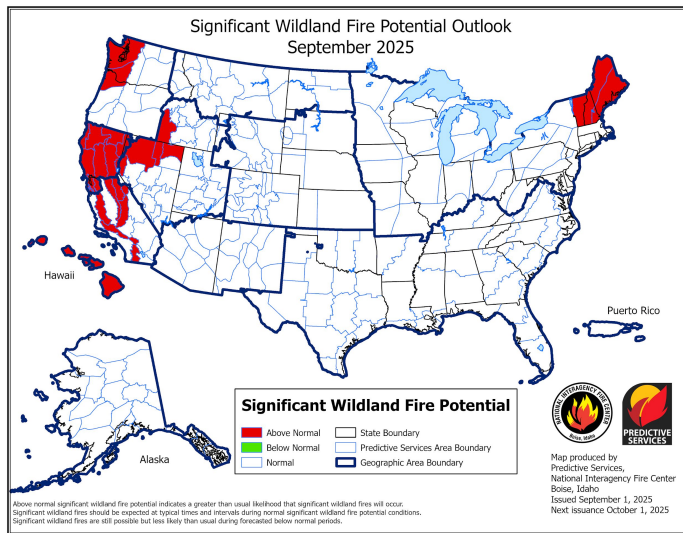




Fire Hazard Impacts

Link to [Wildfire Potential Outlooks from the National Interagency Coordination Center](#).

- The threat of significant wildland fire has shifted to normal for the remainder of the year.



National Oceanic and
Atmospheric Administration

U.S. Department of Commerce

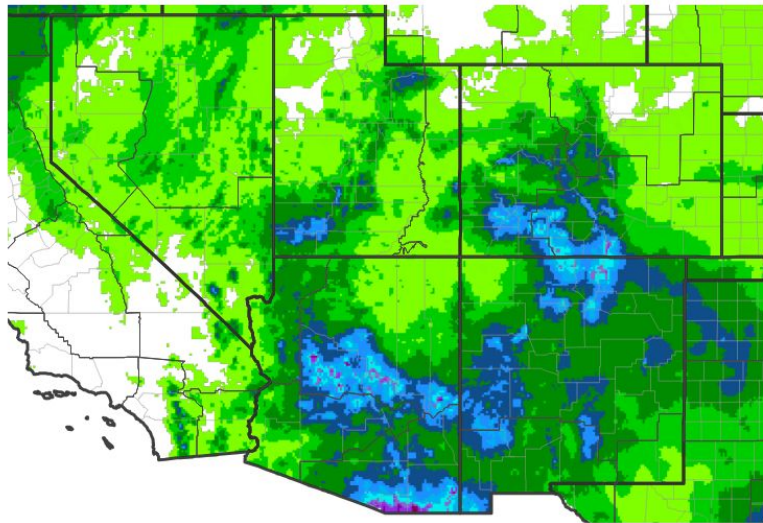
National Weather Service
Salt Lake City, UT



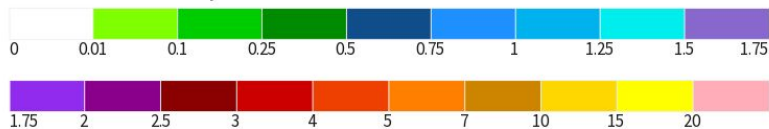
Seven Day Precipitation Forecast

- Another monsoon surge will bring additional precipitation to much of Utah through at least Saturday, drying Sunday. This drying trend will continue through early next week.

7-Day Quantitative Precipitation Forecast for September 4, 2025-September 11, 2025



Predicted Inches of Precipitation



Source(s): National Weather Service Weather Prediction Center; image courtesy of Drought.gov

Last Updated: 09/04/25



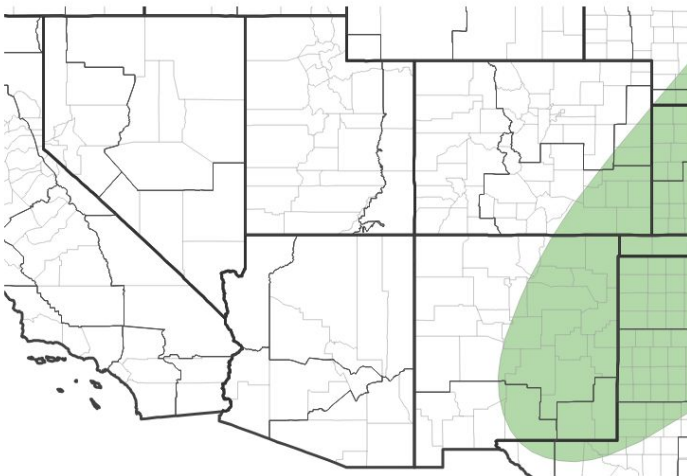


Long-Range Outlooks

The latest monthly and seasonal outlooks can be found on the [CPC homepage](#)

- Odds favor continued above normal temperatures through September for much of Utah.
- There is little signal to indicate which way odds are leaning for precipitation for September.

Monthly Precipitation Outlook for September 1,
2025–September 30, 2025



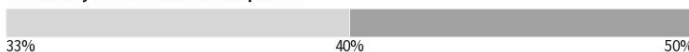
Probability of Below-Normal Precipitation



Probability of Above-Normal Precipitation



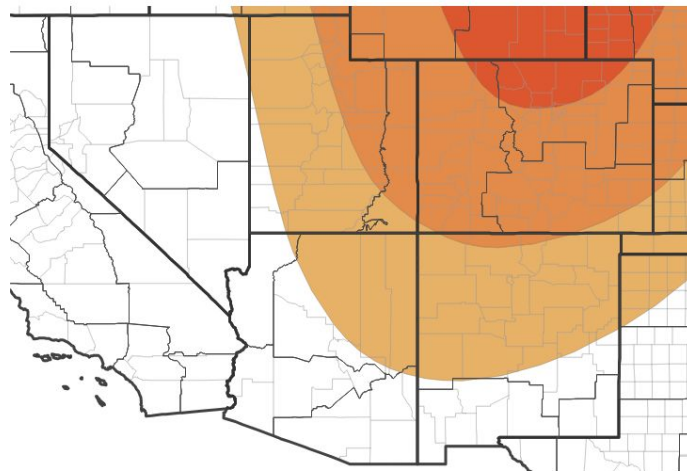
Probability of Near-Normal Precipitation



Source(s): Climate Prediction Center; image courtesy of Drought.gov

Last Updated: 08/31/25

Monthly Temperature Outlook for September 1,
2025–September 30, 2025



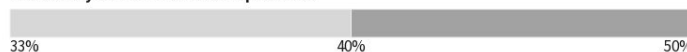
Probability of Below-Normal Temperatures



Probability of Above-Normal Temperatures



Probability of Near-Normal Temperatures



Source(s): Climate Prediction Center; image courtesy of Drought.gov

Last Updated: 08/31/25



National Oceanic and
Atmospheric Administration
U.S. Department of Commerce

National Weather Service
Salt Lake City, UT

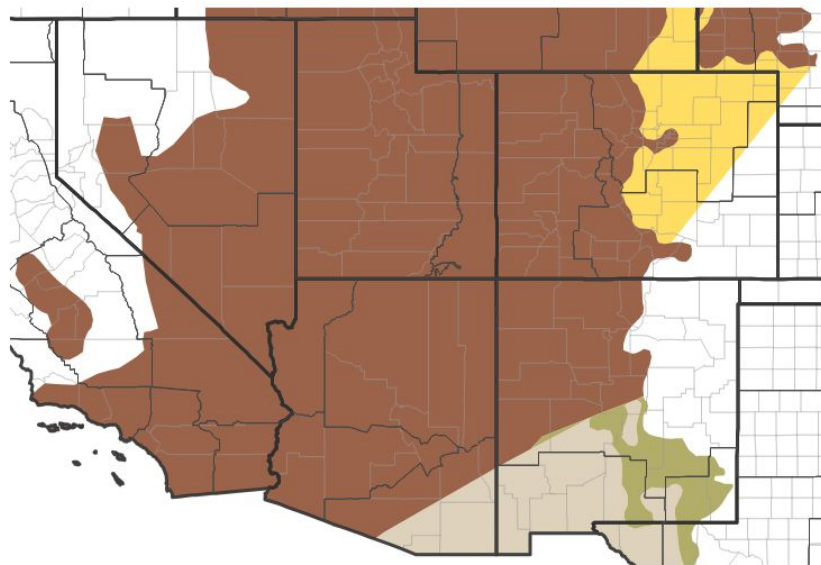


Drought Outlook

The latest monthly and seasonal outlooks can be found on the [CPC homepage](#)

- Drought will persist across the entire region through the end of the November.

Seasonal (3-Month) Drought Outlook for August 31, 2025–November 30, 2025



Drought Is Predicted To...



Source(s): Climate Prediction Center; image courtesy of Drought.gov

Last Updated: 08/31/25

Links to the latest:

[Climate Prediction Center Monthly Drought Outlook](#)

[Climate Prediction Center Seasonal Drought Outlook](#)



**National Oceanic and
Atmospheric Administration**
U.S. Department of Commerce

National Weather Service
Salt Lake City, UT