



Gusty Southerly Winds with Elevated Fire Weather Conditions Today, Cooler and Unsettled Monday and Tuesday with Isolated Thunderstorms

KEY POINTS

- Dry and warm weather expected today with Minor HeatRisk
- Increasing southerly winds with continued dry weather today brings elevated fire weather potential to portions of the northern and central Sacramento Valley
- A weather system will bring cooler temperatures, breezy winds, light precipitation and thunderstorm chances Monday-Tuesday

CHANGES FROM PREVIOUS BRIEFING

- Wind Advisory in effect from 2 PM Today through 1 AM Monday for the northern/central Sacramento Valley and northeast foothills

WEATHER RISK OUTLOOK

Risk levels incorporate potential impacts from weather hazards and likelihood of occurrence for a reasonable worst-case scenario.

	Sun 5/11	Mon 5/12	Tue 5/13	Wed 5/14	Thu 5/15	Fri 5/16	Sat 5/17
Valley & Delta Elevations below 1000 feet	Wind Fire Weather	Showers Thunderstorms					
Foothills Elevations between 1000-3000 feet	Wind	Showers Thunderstorms	Showers Thunderstorms				
Mountains Elevations above 3000 feet	Wind	Showers Snow Showers Thunderstorms	Showers Snow Showers Thunderstorms				

Risk Levels

Little to None

Minor

Moderate

Major

Extreme

DETAILS

Valley



Fire Weather

Impacts:

- Gusty winds and low humidity may lead to easier fire starts.

Timing:

- Today

Confidence:

- High

Details:

- Southerly winds increase today ahead of an approaching weather system, and combined with low relative humidity will lead to elevated fire weather conditions.
- See attached graphics for additional details.

Valley & Delta, Foothills, Mountains



Thunderstorms

Impacts:

- Isolated thunderstorms may produce dangerous lightning, brief heavy rain, gusty winds, and small accumulating hail impacting outdoor activities and recreationists. No debris flow impacts expected to burn scars.

Timing:

- Monday - Tuesday

Confidence:

- Medium

Details:

- Probability of Thunderstorms:
 - Monday: 10-30% N. Sacramento Valley, Foothills, and mountains
 - Tuesday: 10-30% over the foothills and mountains
- Most likely timeframe between 11 AM and 8 PM PDT
- See attached graphics for more details



Wind

Impacts:

- Gusty south to west winds may cause loose outdoor objects to blow around, produce difficult driving conditions for high profile vehicles, and localized power outages

Timing:

- Today

Confidence:

- High

Details:

- Increasing south to west winds expected today ahead of an approaching weather system.
- Probability of Wind Gusts > 40 mph: 50-80%, highest across northern/central Sacramento Valley and along the Sierra
- See attached graphics for details

Mountains



Snow

Impacts:

- Slick roads and minor travel delays possible

Timing:

- Monday - Tuesday

Confidence:

- High

Details:

- Snow Levels 5000 - 6000 feet, lowest late Monday into early Tuesday.
- Probability of Snowfall > 2": 15-50% along Sierra/southern Cascades, highest chances north of HWY 50
- See attached graphics for details

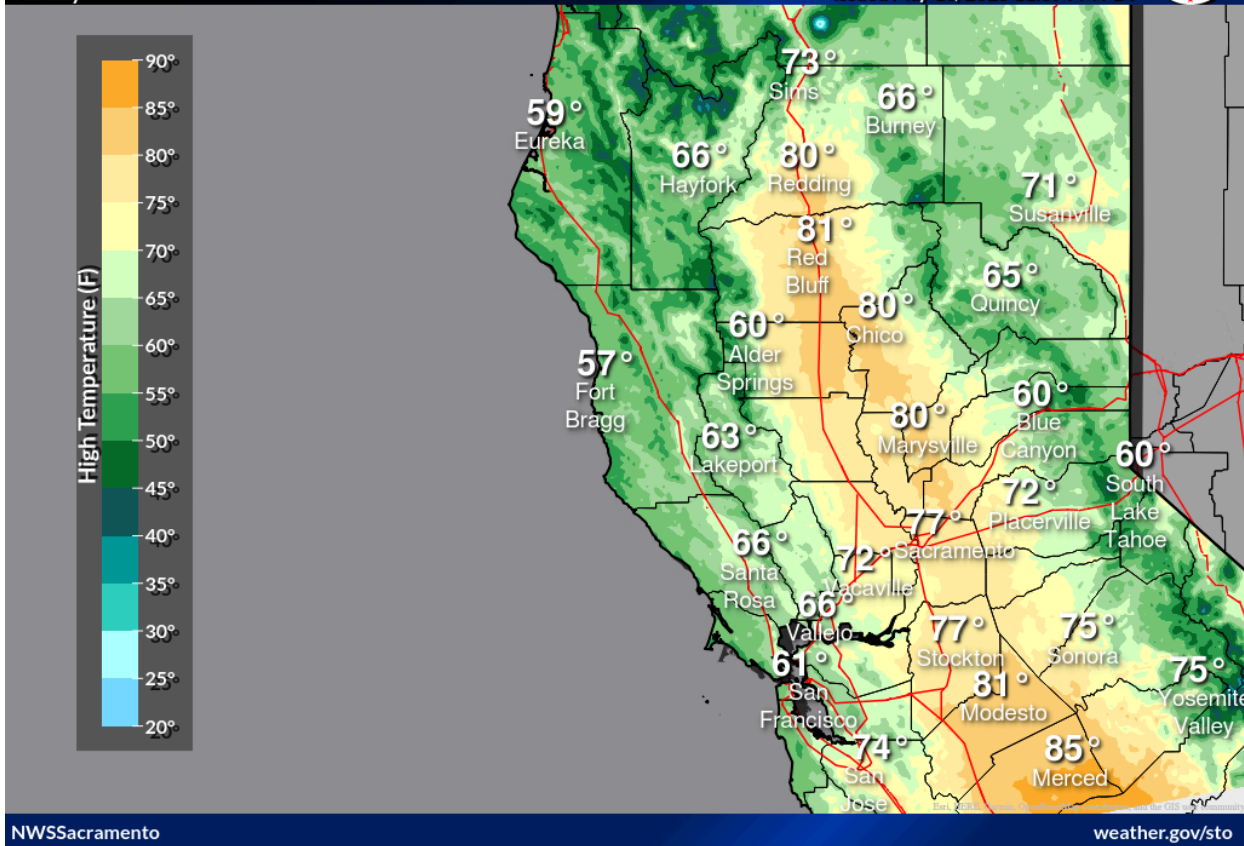
GRAPHICS

High Temperature

Sunday

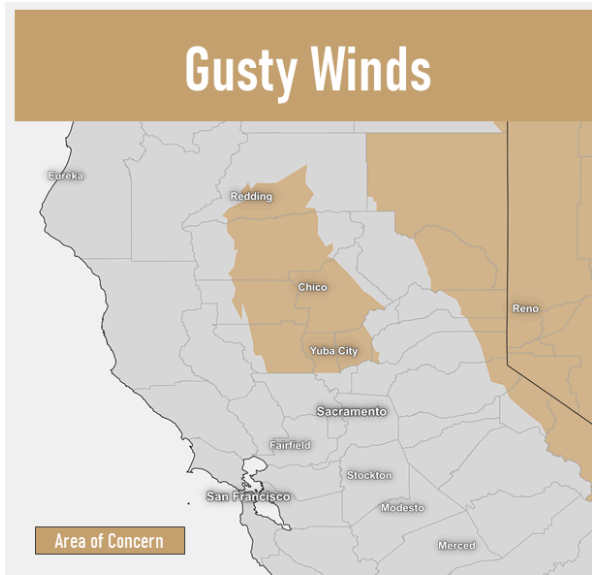
Weather Forecast Office
Sacramento, CA

Issued May 10, 2025 11:07 PM PDT



SundayMaxT.png

Gusty Winds



Timing

- 2 PM Sunday - 1 AM Monday, May 11-12, 2025

Forecast

- Southerly winds 15-25 mph, gusts up to 40-50 mph
- Strongest along and east of I-5, and from Chico northward

Impacts

- ✓ Loose objects may blow around
- ✓ Difficult driving conditions
- ✓ Downed tree branches & weakened trees
- ✓ Localized power outages



National Weather Service - Sacramento, CA

weather.gov/sto

Updated: Sunday, May 11, 2025

Wind Advisory.png

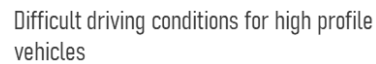
Wind Forecast: Today

(mph) 5 10 15 20 25 30 35 40 45 50 60 70 80 100 120 140

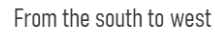
20-25 Eureka
15-20 Hayfork
25-30 Siskiyou
35-40 Redding
40-45 Red Bluff
45-50 Susanville
40-45 Quincy
35-40 Colusa
40-45 Blue Canyon
35-40 Lakeport
25-30 Lakeview
20-25 Santa Rosa
30-35 Sacramento
25-30 Yuba City
20-25 Vallecito
20-25 San Francisco
20-25 Modesto
20-25 Merced
20-25 Sonoma
25-30 Yosemite Valley
35-40 South Lake Tahoe
40-45 Blue Canyon
35-40 Lakeport
45-50 Colusa
35-40 Red Bluff
40-45 Redding
35-40 Siskiyou
25-30 Siskiyou
15-20 Hayfork
20-25 Eureka
10-15 Fort Bragg
Alder Springs
Marysville
Blue Canyon
South Lake Tahoe
Placerville
Sacramento
Yuba City
Vallecito
San Francisco
Modesto
Merced
Sonoma
Yosemite Valley

NOAA
NATIONAL WEATHER SERVICE
weather.gov/sto
Updated: Sunday, May 10, 2025

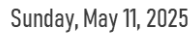
None	Minor	Moderate	Major	Extreme



From the south to west



 Sunday, May 11, 2025



weather.gov/sto

Updated: Sunday, May 10, 2025

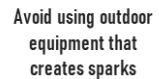
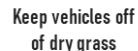
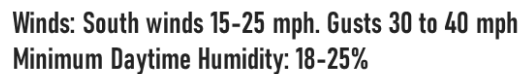
Wind_Impacts.png

Sunday, May 11, 2025



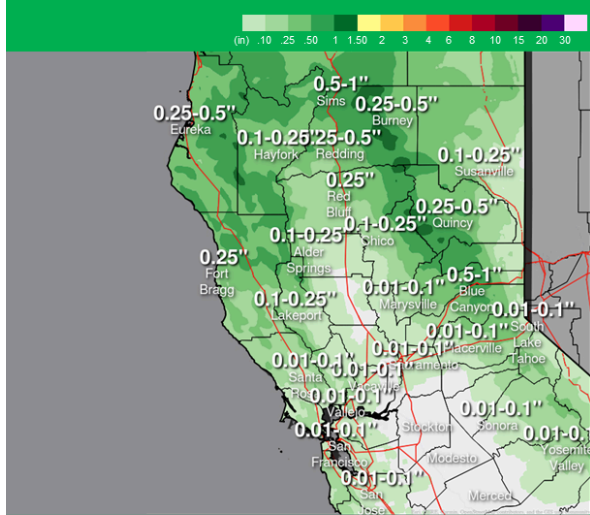
weather.gov/sto

Updated: Saturday, May 10, 2025



Elevated Fire Weather Conditions.png

Rain Forecast



National Weather Service · Sacramento, CA
weather.gov/sto

Updated: Sunday, May 11, 2025

Valley Impact

None Minor Moderate Major Extreme



Longer than normal commutes



Isolated Thunderstorms Possible

Snow Levels



5000 – 6000 feet, lowest late Monday into early Tuesday morning

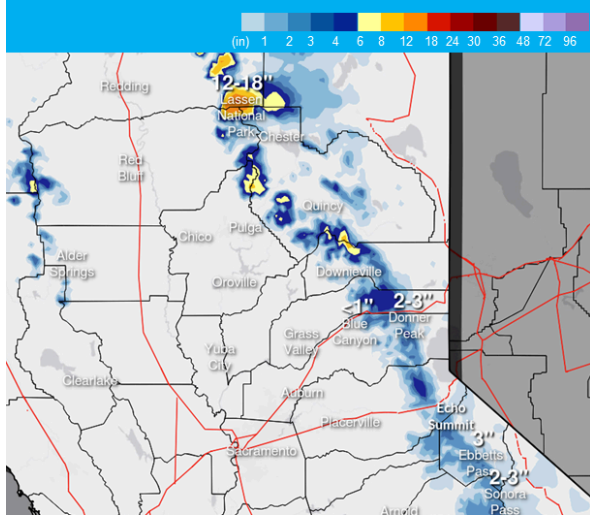
Timing



Monday-Tuesday, May 12-13, 2025

RainForecast_Impacts.png

Snow Forecast



National Weather Service · Sacramento, CA
weather.gov/sto

Updated: Sunday, May 11, 2025

Impact

None Minor Moderate Major Extreme



Slick roads and minor travel delays

Snow Levels



5000 – 6000 feet, lowest late Monday into early Tuesday morning

Timing



Monday-Tuesday, May 12-13, 2025

SierraSnow_Impacts.png

