

Monthly Climate Summary for the Florida Panhandle & Big Bend, Southwest Georgia, and Southeast Alabama

Valid for June 2026

Issued By: National Weather Service Tallahassee

Contact Information: israel.gonzalez@noaa.gov

- This content will be shared monthly.
- Please visit our local climate page at: <https://www.weather.gov/wrh/Climate?wfo=tae>.
- Please visit the [Climate Prediction Center](#) for additional products.

- General Overview
- Temperatures
- Precipitation
- Drought Monitor
- Other Relevant Climate Data
- Monthly Tropical Recap
- July Normals





General Overview

Wet mid month, drought improvement, bouts of severe weather, hazardous heat

- Continued drought improvement.
- Instances of severe weather.
 - 3 confirmed EF-0/EF-U tornadoes on the 17th-18th
 - 69-mph gust at the Blountstown Airport on the 30th
- Periods of hazardous heat.
 - First Heat Advisory of the year issued on the 13th.
 - Five total advisories issued this month
 - Tallahassee reached 99° twice on the 13th & 30th
- One named Atlantic storm in June: Arthur on the 17th-18th.



Heat Advisory Count for NWS [TAE] Tallahassee by America/New_York Date
Valid 01 Jun 2026 - 30 Jun 2026 for Heat Advisory HT.Y

June 2026						
SUN	MON	TUE	WED	THU	FRI	SAT
	1 0	2 0	3 0	4 0	5 0	6 0
7 0	8 0	9 0	10 0	11 0	12 0	13 1
14 1	15 0	16 0	17 0	18 0	19 0	20 0
21 0	22 0	23 0	24 0	25 0	26 0	27 0
28 1	29 1	30 1				

Generated at 3 Jul 2026 2:08 AM CDT in 0.50s

IEM Autoplot App #191

Figure above valid June 2026



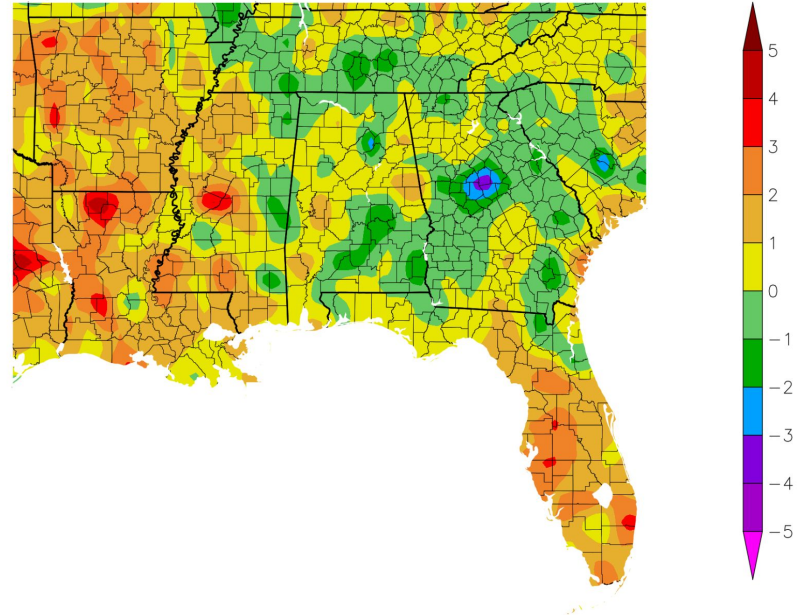


June 2026 Temperatures

Variable across the Tri-state area

- Tallahassee (TLH):
 - average monthly mean - 81.7° (+0.9°)
 - highest/lowest temp - 99°/57°
- Apalachicola (AAF):
 - average monthly mean - 81.1° (+0.4°)
 - highest/lowest temp - 94°/65°
- Panama City NW (ECP):
 - average monthly mean - 80.2° (+/-0°)
 - highest/lowest temp - 96°/61°
- Marianna (MAI):
 - average monthly mean - 80.7° (-0.5°)
 - highest/lowest temp - 97°/58°
- Valdosta (VLD):
 - average monthly mean - 80.1° (+1.1°)
 - highest/lowest temp - 97°/55°
- Albany (ABY):
 - average monthly mean - 80.2° (-0.7°)
 - highest/lowest temp - 97°/57°
- Dothan (DHN):
 - average monthly mean - 79.9° (-1.2°)
 - highest/lowest temp - 97°/61°

Departure from Normal Temperature (F)
6/1/2026 – 6/30/2026



Generated 7/2/2026 using provisional data.

Image Caption: The High Plains Regional Climate Center (HPRCC) ACIS Web Services



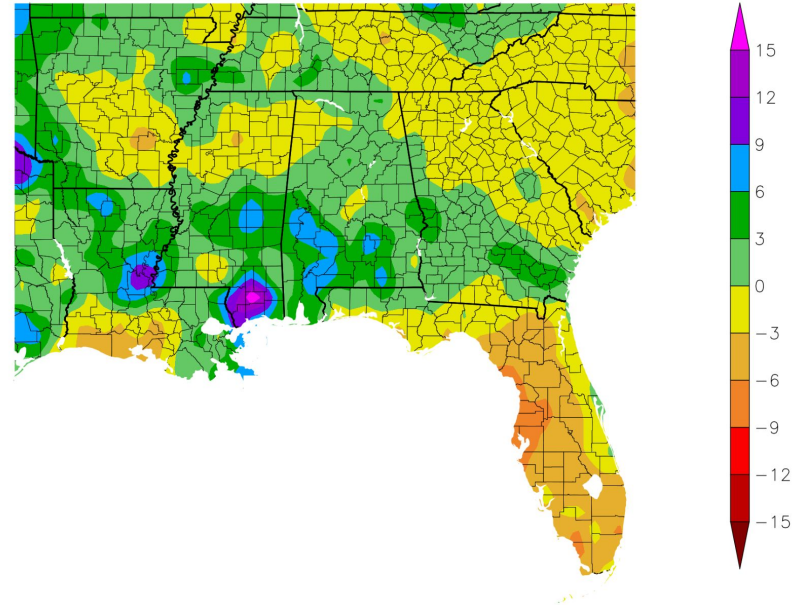


June 2026 Precipitation

Variable across the Tri-state area

- Tallahassee (TLH):
 - monthly amount - 5.20 inches
 - 2.56 inches below normal
- Apalachicola (AAF):
 - monthly amount - 4.32 inches
 - 1.54 inches below normal
- Panama City NW (ECP):
 - monthly amount - 2.96 inches
 - 2.76 inches below normal
- Marianna (MAI):
 - monthly amount - 8.53 inches
 - 3.46 inches above normal
- Valdosta (VLD):
 - Monthly amount - 6.06 inches
 - 1.02 inches below normal
- Albany (ABY):
 - monthly amount - 4.97 inches
 - 0.09 inches below normal
- Dothan (DHN):
 - monthly amount - 5.30 inches
 - 0.22 inches above normal

Departure from Normal Precipitation (in)
6/1/2026 - 6/30/2026



Generated 7/2/2026 using provisional data.

ACIS Web Services

Image Caption: The High Plains Regional Climate Center ([HPRCC](#))





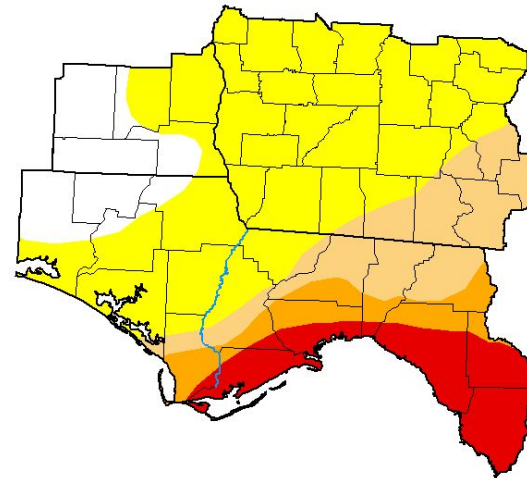
Drought Monitor

Continued drought improvement out west, slower in the Eastern FL Big Bend

- Further drought improvement across much of the region, slower in the Eastern FL Big Bend
- **Extreme (D3) Drought** - Coastal Franklin eastward to the SE FL Big Bend.
- **Severe (D2) Drought** - inland Franklin County northeast to Southern Leon County and then east to the Suwannee River.
- **Moderate (D1) Drought** - north of I-10 from Leor County eastward to the Suwannee River, Thomas County northeast to Berrien County and south to the GA/FL border.
- **Abnormally Dry (D0)** - remainder of the area, generally west of a line from Mexico Beach, FL to Ocilla, GA.

U.S. Drought Monitor Tallahassee, FL WFO

June 30, 2026
(Released Thursday, Jul. 2, 2026)
Valid 8 a.m. EDT



	Drought Conditions (Percent Area)					
	None	D0-D4	D1-D4	D2-D4	D3-D4	D4
Current	12.95	87.05	34.45	18.67	11.48	0.00
Last Week 06-23-2026	5.58	94.42	34.45	20.16	12.36	0.00
3 Months Ago 03-31-2026	0.00	100.00	100.00	100.00	94.58	37.60
Start of Calendar Year 01-06-2026	0.00	100.00	100.00	46.72	10.97	0.00
Start of Water Year 09-30-2025	1.00	99.00	92.99	33.10	0.00	0.00
One Year Ago 07-01-2025	99.68	0.32	0.00	0.00	0.00	0.00

Intensity

- None
- D0 Abnormally Dry
- D1 Moderate Drought
- D2 Severe Drought
- D3 Extreme Drought
- D4 Exceptional Drought

The Drought Monitor focuses on broad-scale conditions. Local conditions may vary. For more information on the Drought Monitor, go to <https://droughtmonitor.unl.edu/About.aspx>

Author:
Brad Rippey
U.S. Department of Agriculture



droughtmonitor.unl.edu

Image Caption: Weekly [Local Drought Monitor](#) valid June 30, 2026





Other Relevant Climate Data

Based on current 30-yr climatology (1991-2020)

- Tallahassee (TLH):
 - days of measurable rain - 12
 - max daily rainfall - 1.46 inches, 16th
 - [daily records](#) (1)
 - highest wind gust - 50 mph, 23rd
 - number of 90° days - 23
- Apalachicola (AAF):
 - days of measurable rain - 8
 - max daily rainfall - 1.84 inches, 30th
 - [daily records](#) (2)
 - highest wind gust - 39 mph, 16th
 - number of 90° days - 16
- Albany (ABY):
 - days of measurable rain - 10
 - max daily rainfall - 2.12 inches, 18th
 - [daily records](#) (1)
 - highest wind gust - 44 mph, 20th
 - number of 90° days - 15
- Panama City NW (ECP):
 - days of measurable rain - 9
 - max daily rainfall - 0.78 inches, 1st
 - highest wind gust - 43 mph, 16th
 - number of 90° days - 14
- Marianna (MAI):
 - days of measurable rain - 11
 - max daily rainfall - 1.82 inches, 20th
 - highest wind gust - 40 mph, 1st
 - number of 90° days - 15
- Valdosta (VLD):
 - days of measurable rain - 14
 - max daily rainfall - 1.05 inches, 13th
 - highest wind gust - *missing*
 - number of 90° days - 19
- Dothan (DHN):
 - days of measurable rain - 11
 - max daily rainfall - 2.03 inches, 18th
 - highest wind gust - 43 mph, 20th
 - number of 90° days - 11

Sources: [National Center for Environmental Information](#), NOAA [NOWData](#).





Monthly Tropical Recap

One named storm in June 2026

- Potential Tropical Cyclone One was designated Tropical Storm Arthur on the 17th.
- Arthur was a weak, short-lived system near the TX/LA coast.
- Remnants following landfall produced widespread flooding across the Northern Gulf states.
- Post-Arthur interactions with a front led to locally wet & severe weather mid month.
- The next named storm on the list is Bertha.

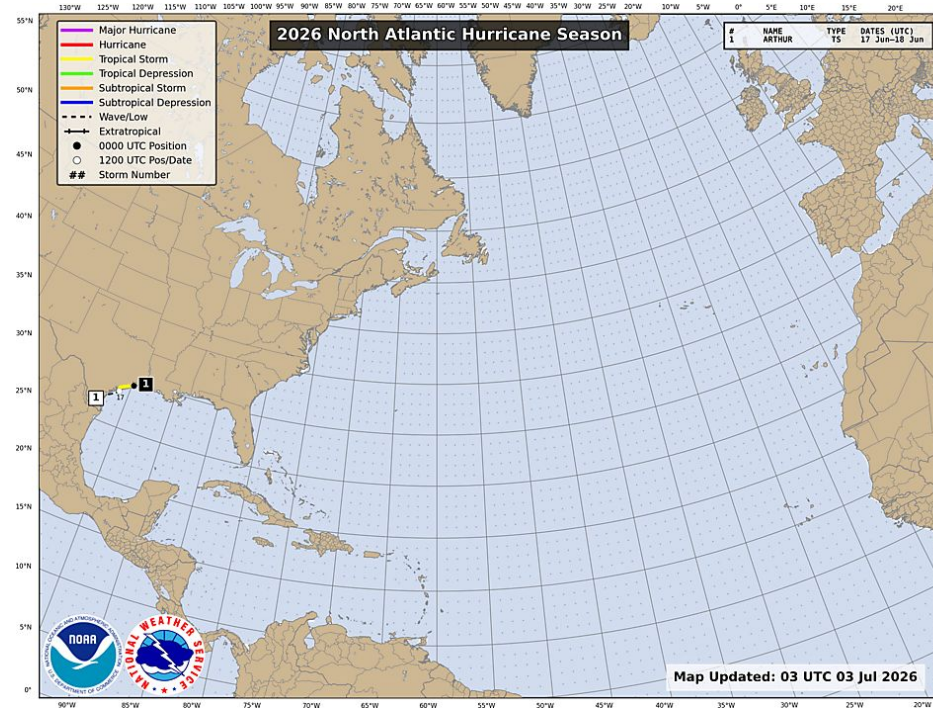


Chart image valid June 2026





July Normals

Based on current 30-yr climatology (1991-2020)

- Tallahassee (TLH):
 - mean monthly temp - 82.5°
 - high/low - 92.0°/73.0°
 - mean monthly rainfall - 7.14 inches
- Apalachicola (AAF):
 - mean monthly temp - 82.3°
 - high/low - 89.9°/74.6°
 - mean monthly rainfall - 5.74 inches
- Panama City NW (ECP):
 - mean monthly temp - 80.2°
 - high/low - 90.9°/73.2°
 - mean monthly rainfall - 5.72 inches
- Marianna (MAI):
 - mean monthly temp - 82.4°
 - high/low - 92.0°/72.9°
 - mean monthly rainfall - 5.10 inches
- Valdosta (VLD):
 - mean monthly temp - 81.1°
 - high/low - 92.0°/70.2°
 - mean monthly rainfall - 5.33 inches
- Albany (ABY):
 - mean monthly temp - 83.1°
 - high/low - 93.3°/73.0°
 - mean monthly rainfall - 5.12 inches
- Dothan (DHN):
 - mean monthly temp - 83.1°
 - high/low - 93.4°/72.8°
 - mean monthly rainfall - 5.95 inches

Sources: [National Center for Environmental Information](#), NOAA [NOWData](#).

