



# NOAA - National Weather Service

Tampa Bay Area

2525 14th Avenue SE, Ruskin, Florida 33570

813-645-2323 <https://weather.gov/tampabay>

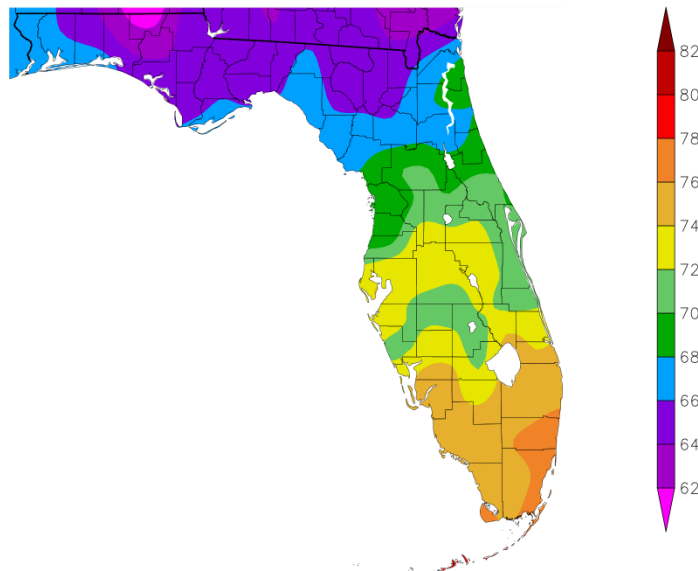
## April 2021 Climate Summary for West Central and Southwest Florida

Temperatures averaged from slightly below normal to a couple of degrees above normal for the month which did not place any of our official NWS sites in the Top Ten Warmest/Coolest for April. In the table below are the available sites at this time.

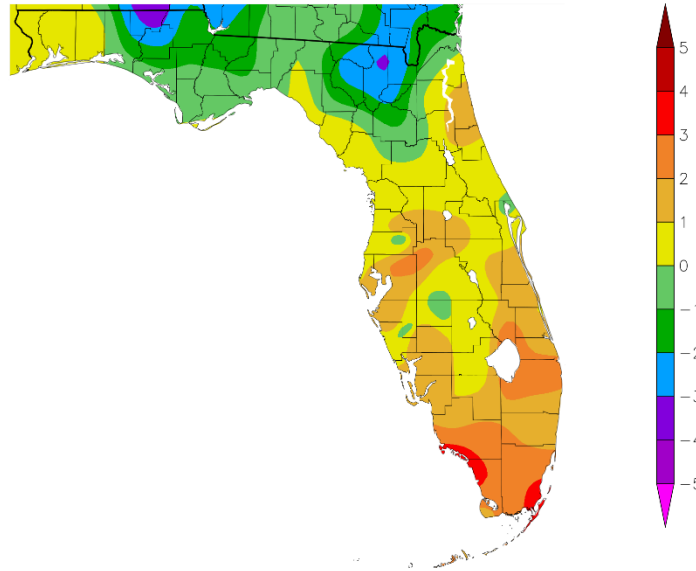
### APRIL TEMPERATURE RANKINGS (°F):

| Location                | Rank               | April 2021 Avg Temp | Normal Apr Temp | Dep fm Normal | Records Began |
|-------------------------|--------------------|---------------------|-----------------|---------------|---------------|
| Fort Myers Area         | 24th Warmest (tie) | 75.3°               | 73.8°           | +1.5°         | Jan 1902      |
| St Petersburg Area      | 39th Warmest       | 74.0°               | 72.9°           | +1.1°         | Aug 1914      |
| Tampa Area              | 27th Warmest (tie) | 73.9°               | 72.0°           | +1.9°         | Apr 1890      |
| Lakeland Area           | 24th Warmest (tie) | 73.7°               | 71.1°           | +2.6°         | Jan 1915      |
| Punta Gorda Area        | 34th Warmest (tie) | 73.7°               | 71.8°           | +1.9°         | May 1914      |
| Winter Haven Area       | 26th Warmest       | 73.5°               | 72.2°           | +1.3°         | Mar 1941      |
| Bartow                  | 53rd Warmest       | 72.6°               | 72.5°           | +0.1°         | Jun 1892      |
| Sarasota-Bradenton Area | 35th Warmest       | 72.3°               | 71.1°           | +1.2°         | Jan 1911      |
| Venice                  | 36th Warmest       | 71.7°               | 71.1°           | +0.6°         | May 1955      |
| St. Leo                 | 66th Coolest (tie) | 71.5°               | 71.9°           | -0.4°         | Apr 1895      |
| Wauchula 2 N            | 28th Coolest (tie) | 71.0°               | 71.7°           | -0.7°         | Jan 1933      |
| Myakka River State Park | 16th Coolest (tie) | 70.9°               | 71.6°           | -0.7°         | Mar 1956      |
| Tarpon Springs          | 40th Coolest (tie) | 70.3°               | 70.7°           | -0.4°         | Jan 1892      |
| Brooksville Area        | 81st Warmest (tie) | 69.0°               | 67.7°           | +1.3°         | Jan 1892      |

Temperature (F)  
4/1/2021 - 4/30/2021



Departure from Normal Temperature (F)  
4/1/2021 - 4/30/2021

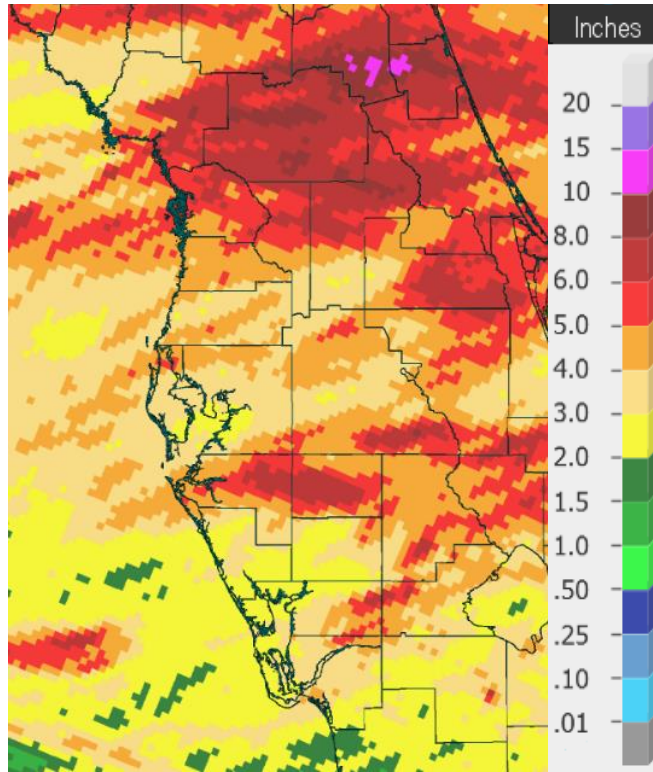


Graphics Source: NOAA Regional Climate Centers

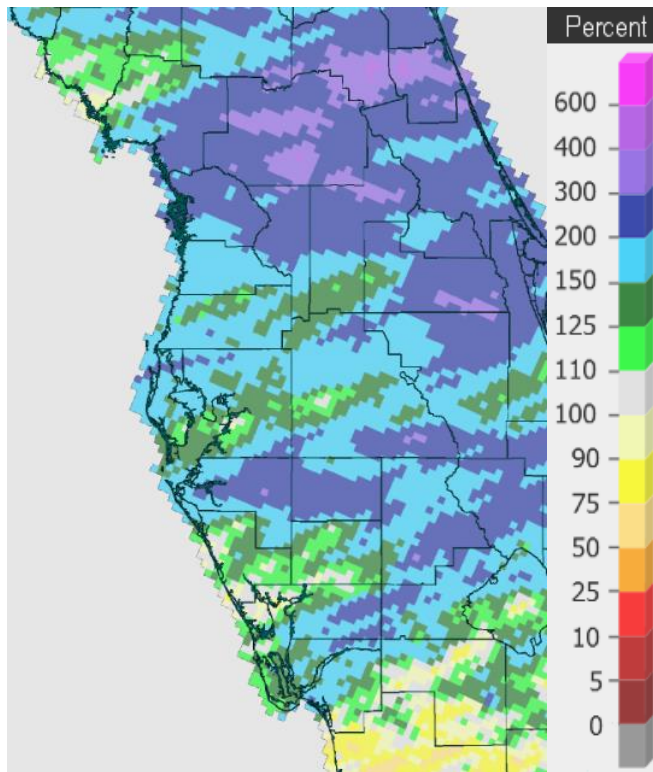
As far as rainfall, April is usually one of the drier months of the year, but this April we saw a few slow-moving cold fronts which brought widespread showers and thunderstorms to much of the region. This led to near to well above normal rainfall across the area with a couple of sites expected to be in the Top Ten Wettest for April.

**APRIL RAINFALL (inches):**

| Location                | Rank               | April 2021<br>Rain Total | Normal<br>Apr Rain | Dep fm<br>Normal | Records<br>Began |
|-------------------------|--------------------|--------------------------|--------------------|------------------|------------------|
| Wauchula 2 N            | 8th Wettest        | 6.16                     | 2.74               | +3.42            | Jan 1933         |
| Brooksville Area        | 23rd Wettest       | 4.50                     | 2.56               | +1.94            | Jan 1892         |
| St. Leo                 | 27th Wettest       | 4.21                     | 2.62               | +1.59            | Apr 1895         |
| Sarasota-Bradenton Area | 16th Wettest       | 4.09                     | 2.44               | +1.65            | Jan 1911         |
| Lakeland Area           | 21st Wettest (tie) | 3.87                     | 2.67               | +1.20            | Jan 1915         |
| Fort Myers Area         | 20th Wettest       | 3.73                     | 2.18               | +1.55            | Jan 1902         |
| Tarpon Springs          | 31st Wettest       | 3.62                     | 2.37               | +1.25            | Jan 1892         |
| Winter Haven Area       | 16th Wettest       | 3.55                     | 2.48               | +1.07            | Mar 1941         |
| Tampa Area              | 29th Wettest       | 3.35                     | 2.03               | +1.32            | Apr 1890         |
| Bartow                  | 49th Wettest       | 2.91                     | 2.73               | +0.18            | Jun 1892         |
| Punta Gorda Area        | 29th Wettest       | 2.89                     | 2.43               | +0.46            | May 1914         |
| Myakka River State Park | 25th Wettest       | 2.79                     | 2.59               | +0.20            | Sep 1943         |
| Venice                  | 25th Wettest       | 2.53                     | 2.48               | +0.05            | May 1955         |
| St. Petersburg Area     | 61st Driest        | 1.95                     | 2.27               | -0.32            | Aug 1914         |



April 2021 Rainfall



Percent of Normal Rain

On the following pages are tables of the top ten warmest, coolest, wettest, and driest Aprils at some official NWS locations, which includes the average/total so far for this April where available, and the 1981-2010 average temperature and rainfall for the month of April.

**CHIEFLAND 5 ESE** (records began in July 1956):

| Warmest Aprils  | Coolest Aprils  | Wettest Aprils  | Driest Aprils   |
|-----------------|-----------------|-----------------|-----------------|
| 1 73.0 in 1991  | 1 63.4 in 1961  | 1 14.61 in 1982 | 1 0.00 in 1967  |
| 2 72.5 in 2002  | 2 64.8 in 2005  | 2 8.46 in 1997  | 2 0.30 in 1963  |
| 3 72.2 in 1999  | 3 64.9 in 2004  | 3 7.39 in 1995  | 3 0.31 in 1969  |
| 4 71.8 in 1970  | 4 65.0 in 1962  | 4 7.16 in 1985  | 4 0.42 in 2016  |
| 5 71.5 in 2020  | 5 65.3 in 1993  | 5 7.13 in 1991  | 5 0.79 in 1989  |
| 6 71.3 in 2017  | 6 65.5 in 2000  | 6 6.65 in 1957  | 6 0.80 in 2000  |
| 7 71.3 in 2011  | 7 65.6 in 2007  | 7 6.48 in 1983  | 7 0.88 in 2001  |
| 8 71.2 in 1911  | 8 66.4 in 1966  | 8 6.22 in 2005  | 8 0.88 in 1998  |
| 9 71.2 in 1965  | 9 66.6 in 1984  | 9 6.20 in 1961  | 9 0.91 in 1993  |
| 10 70.9 in 1994 | 10 66.9 in 1986 | 10 6.12 in 1979 | 10 0.91 in 1981 |
|                 | 66.9 in 1983    |                 |                 |

Average Temperature for April 1-28, 2021 = 67.4°  
 Normal Temperature for April at CHIF1 = 67.3°

Total Rainfall for April 1-28, 2021 = 3.73 inches  
 Normal Rainfall for April at CHIF1 = 3.13 in.

**INVERNESS 3 SE** (records began in July 1948):

| Warmest Aprils  | Coolest Aprils  | Wettest Aprils  | Driest Aprils   |
|-----------------|-----------------|-----------------|-----------------|
| 1 75.5 in 1954  | 1 64.8 in 1993  | 1 7.88 in 1953  | 1 0.00 in 1967  |
| 2 74.9 in 2015  | 2 66.1 in 2004  | 2 5.89 in 1991  | 2 0.06 in 2001  |
| 3 74.5 in 1968  | 3 66.2 in 2000  | 3 5.76 in 2011  | 3 0.07 in 1998  |
| 4 74.3 in 1967  | 4 66.3 in 2007  | 4 5.20 in 1997  | 4 0.20 in 1978  |
| 5 74.1 in 1965  | 5 66.4 in 1996  | 5 5.15 in 1959  | 5 0.26 in 1987  |
| 6 74.0 in 1970  | 6 66.8 in 2003  | 6 5.01 in 2018  | 6 0.31 in 1977  |
| 7 73.5 in 2002  | 66.8 in 1992    | 7 5.00 in 1982  | 7 0.31 in 1974  |
| 8 73.1 in 1969  | 8 67.1 in 1998  | 8 4.89 in 1984  | 8 0.65 in 1999  |
| 9 73.1 in 1963  | 9 67.3 in 1988  | 9 4.62 in 1966  | 9 0.73 in 1968  |
| 10 73.0 in 2020 | 10 67.4 in 1950 | 10 4.47 in 1992 | 10 0.76 in 1981 |

Average Temperature for April 1-28, 2021 = 68.9°  
 Normal Temperature for April at INV1 = 68.1°

Total Rainfall for April 1-28, 2021 = 5.52 inches  
 Normal Rainfall for April at INV1 = 2.29 in.

**BROOKSVILLE AREA** (records began in January 1892):

| Warmest Aprils         | Coolest Aprils         | Wettest Aprils         | Driest Aprils   |
|------------------------|------------------------|------------------------|-----------------|
| 1 75.5 in 1947         | 1 64.3 in 2005         | 1 14.49 in 1928        | 1 Trace in 2017 |
| 75.5 in 1945           | 64.3 in 2004           | 2 8.05 in 1900         | Trace in 1967   |
| 75.5 in 1929           | 3 64.8 in 1901         | 3 7.54 in 1935         | 3 0.04 in 2001  |
| 4 75.2 in 2015         | 4 65.3 in 2000         | 4 7.41 in 1949         | 4 0.10 in 1903  |
| 5 74.5 in 1927         | 5 66.8 in 2007         | 5 7.38 in 1991         | 5 0.16 in 1977  |
| 6 74.4 in 1994         | 6 67.1 in 1950         | 6 6.92 in 1953         | 6 0.20 in 1981  |
| 7 74.0 in 1909         | 7 67.3 in 1892         | 7 6.48 in 1937         | 7 0.21 in 1932  |
| 8 73.9 in 2020         | 8 67.5 in 1998         | 8 6.39 in 1918         | 8 0.25 in 2006  |
| 9 73.8 in 1981         | 9 67.6 in 1926         | 9 6.33 in 1982         | 9 0.26 in 1998  |
| 10 73.7 in 2002        | 10 67.7 in 1952        | 10 6.20 in 1926        | 10 0.32 in 1896 |
| 73.7 in 1964           |                        | ...                    |                 |
| 73.7 in 1912           |                        | <b>23 4.50 in 2021</b> |                 |
| ...                    |                        |                        |                 |
| <b>81 69.0 in 2021</b> | <b>28 69.0 in 2021</b> |                        |                 |
| 69.0 in 1918           | 69.0 in 1918           |                        |                 |

Normal Temperature for April at BKV = 67.7°

Normal Rainfall for April at BKV = 2.56 in.

**ST. LEO** (records began in April 1895):

| Warmest Aprils         | Coolest Aprils         | Wettest Aprils         | Driest Aprils           |
|------------------------|------------------------|------------------------|-------------------------|
| 1 76.8 in 1908         | 1 66.4 in 1931         | 1 15.55 in 1953        | 1 Trace in 1967         |
| 2 76.0 in 1954         | 2 66.7 in 1987         | 2 11.22 in 1928        | 2 0.06 in 1981          |
| 76.0 in 1947           | 66.7 in 1928           | 3 7.41 in 1937         | 0.06 in 1922            |
| 4 75.7 in 1945         | 4 67.7 in 1950         | 4 7.02 in 1997         | 4 0.09 in 2001          |
| 5 75.5 in 2015         | 67.7 in 1915           | 5 6.86 in 1991         | 5 0.11 in 1903          |
| 6 75.4 in 2002         | 67.7 in 1901           | 6 6.75 in 1949         | 6 0.12 in 1963          |
| 7 75.3 in 1994         | 7 68.0 in 1903         | 6.75 in 1941           | 7 0.13 in 2017          |
| 8 74.9 in 1991         | 8 68.4 in 1916         | 8 6.61 in 2018         | 8 0.20 in 1911          |
| 9 74.6 in 2006         | 9 68.6 in 1993         | 9 6.33 in 1895         | 9 0.21 in 1998          |
| 74.6 in 1999           | 10 68.7 in 1913        | 10 6.32 in 2020        | 10 0.23 in 1896         |
| ...                    | ...                    | ...                    | ...                     |
| <b>59 71.5 in 2021</b> | <b>66 71.5 in 2021</b> | <b>27 4.21 in 2021</b> | <b>100 4.21 in 2021</b> |
| 71.5 in 1953           | 71.5 in 1953           |                        |                         |
| 71.5 in 1925           | 71.5 in 1925           |                        |                         |

Normal Temperature for April at STLF1 = 71.9°

Normal Rainfall for April at STLF1 = 2.62 in.

**TARPON SPRINGS** (records began in January 1892):

| Warmest Aprils         | Coolest Aprils         | Wettest Aprils         | Driest Aprils          |
|------------------------|------------------------|------------------------|------------------------|
| 1 76.5 in 2015         | 1 65.7 in 1987         | 1 7.63 in 1931         | 1 0.00 in 1967         |
| 2 76.4 in 1947         | 2 67.1 in 1915         | 2 7.20 in 1942         | 2 Trace in 1896        |
| 3 76.0 in 1991         | 3 67.2 in 1962         | 3 6.97 in 1949         | 3 0.05 in 1922         |
| 4 75.3 in 1945         | 4 67.4 in 1950         | 4 6.66 in 1928         | 4 0.07 in 1981         |
| 5 75.1 in 1994         | 67.4 in 1940           | 5 6.31 in 1953         | 0.07 in 1972           |
| 6 75.0 in 2020         | 6 67.5 in 1903         | 6 6.01 in 1957         | 6 0.08 in 1923         |
| 7 74.9 in 1948         | 7 67.8 in 1916         | 7 6.00 in 2020         | 7 0.16 in 1998         |
| 8 74.8 in 1922         | 8 67.9 in 1971         | 8 5.97 in 1933         | 8 0.18 in 1903         |
| 74.8 in 1912           | 67.9 in 1961           | 9 5.90 in 1959         | 9 0.20 in 2017         |
| 10 74.7 in 2002        | 67.9 in 1910           | 10 5.70 in 1941        | 10 0.23 in 1910        |
| 74.7 in 1929           |                        | ...                    | ...                    |
| ...                    | ...                    | <b>31 3.62 in 2021</b> | <b>98 3.62 in 2021</b> |
| <b>86 70.3 in 2021</b> | <b>40 70.3 in 2021</b> |                        |                        |
| 70.3 in 1896           | 70.3 in 1896           |                        |                        |

Normal Temperature for April at TRPF1 = 70.7°  
Normal Rainfall for April at TRPF1 = 2.37 in.

-----  
**TAMPA AREA** (records began in April 1890):

| Warmest Aprils         | Coolest Aprils          | Wettest Aprils         | Driest Aprils           |
|------------------------|-------------------------|------------------------|-------------------------|
| 1 78.0 in 2015         | 1 66.3 in 1987          | 1 10.71 in 1997        | 1 Trace in 1981         |
| 2 77.1 in 2017         | 2 66.7 in 1901          | 2 8.04 in 1920         | Trace in 1967           |
| 3 76.8 in 1991         | 3 67.2 in 1993          | 3 7.23 in 1931         | 3 0.02 in 2001          |
| 4 76.6 in 1947         | 4 67.7 in 1950          | 4 6.73 in 2020         | 4 0.05 in 1969          |
| 5 76.4 in 1908         | 5 68.1 in 1903          | 5 6.59 in 1957         | 5 0.16 in 1922          |
| 6 76.3 in 2011         | 6 68.2 in 1899          | 6 6.14 in 1933         | 0.16 in 1898            |
| 76.3 in 2002           | 7 68.6 in 1983          | 7 5.75 in 1926         | 7 0.21 in 1963          |
| 8 76.0 in 1945         | 68.6 in 1961            | 8 5.48 in 1959         | 8 0.31 in 1892          |
| 9 75.4 in 2020         | 68.6 in 1915            | 9 5.38 in 1895         | 9 0.35 in 1938          |
| 75.4 in 2013           | 68.6 in 1891            | 10 5.19 in 1951        | 10 0.37 in 1946         |
| ...                    | ...                     | 5.19 in 1941           | ...                     |
| <b>27 73.9 in 2021</b> | <b>105 73.9 in 2021</b> | ...                    | ...                     |
| 73.9 in 1911           | 73.9 in 1911            | <b>29 3.35 in 2021</b> | <b>104 3.35 in 2021</b> |

Normal Temperature for April at TPA = 72.0°  
Normal Rainfall for April at TRA = 2.03 in.

**ST. PETERSBURG** (records began in August 1914):

| Warmest Aprils         | Coolest Aprils         | Wettest Aprils         | Driest Aprils          |
|------------------------|------------------------|------------------------|------------------------|
| 1 78.6 in 2015         | 1 68.5 in 1950         | 1 9.73 in 1997         | 1 0.00 in 1967         |
| 2 77.0 in 2011         | 2 68.7 in 1987         | 2 9.09 in 1920         | 2 Trace in 1981        |
| 77.0 in 1947           | 3 68.9 in 1993         | 3 8.45 in 1951         | 3 0.01 in 1974         |
| 4 76.9 in 2002         | 4 69.2 in 1952         | 4 7.69 in 1933         | 4 0.04 in 2001         |
| 5 76.6 in 1991         | 5 69.3 in 1983         | 5 7.39 in 1957         | 5 0.07 in 1987         |
| 6 76.5 in 2020         | 6 70.1 in 1916         | 6 7.20 in 2003         | 6 0.11 in 1998         |
| 76.5 in 2013           | 7 70.2 in 1915         | 7 6.16 in 1960         | 7 0.24 in 1932         |
| 8 76.1 in 1929         | 8 70.4 in 1951         | 8 6.09 in 1948         | 8 0.25 in 1977         |
| 9 76.0 in 1981         | 9 70.6 in 1931         | 9 5.81 in 1931         | 9 0.27 in 2006         |
| 76.0 in 1954           | 10 70.8 in 1996        | 10 5.46 in 1941        | 0.27 in 1963           |
| 76.0 in 1922           | 70.8 in 1961           | ...                    | ...                    |
| ...                    | ...                    | <b>47 1.95 in 2021</b> | <b>61 1.95 in 2021</b> |
| <b>39 74.0 in 2021</b> | <b>67 74.0 in 2021</b> |                        |                        |

Normal Temperature for April at SPG = 72.9°

Normal Rainfall for April at SPG = 2.27 in.

---

**PLANT CITY** (Temperature records began in Sep 1892 and Rainfall records began in Jan 1893):

| Warmest Aprils  | Coolest Aprils  | Wettest Aprils  | Driest Aprils   |
|-----------------|-----------------|-----------------|-----------------|
| 1 77.2 in 2020  | 1 65.0 in 1901  | 1 7.29 in 1931  | 1 0.00 in 2001  |
| 2 76.9 in 2015  | 2 65.5 in 1987  | 2 7.13 in 1957  | 0.00 in 1981    |
| 3 76.1 in 1947  | 3 65.9 in 1931  | 3 7.11 in 1933  | 0.00 in 1967    |
| 4 75.9 in 1912  | 4 67.4 in 1932  | 4 6.56 in 1928  | 4 0.16 in 1987  |
| 5 75.8 in 1911  | 5 67.6 in 1983  | 5 6.53 in 1941  | 5 0.20 in 1923  |
| 6 75.7 in 1945  | 67.6 in 1902    | 6 6.40 in 1937  | 0.20 in 1911    |
| 7 75.6 in 2011  | 7 67.7 in 2005  | 7 6.36 in 1947  | 7 0.26 in 1938  |
| 8 75.5 in 1991  | 8 67.9 in 1993  | 8 6.06 in 1997  | 8 0.27 in 1963  |
| 9 75.3 in 2017  | 9 68.0 in 1940  | 9 6.00 in 1951  | 9 0.31 in 1977  |
| 10 75.2 in 2019 | 10 68.2 in 1925 | 10 5.78 in 1959 | 10 0.32 in 1898 |

Average Temperature for April 1-28, 2021 = 74.1°

Normal Temperature for April at PLCF1 = 70.9°

Total Rainfall for April 1-28, 2021 = 3.75 inches

Normal Rainfall for April at PLCF1 = 2.69 in.

**LAKELAND AREA** (records began in January 1915):

| Warmest Aprils         | Coolest Aprils         | Wettest Aprils         | Driest Aprils          |
|------------------------|------------------------|------------------------|------------------------|
| 1 77.2 in 2015         | 1 67.3 in 1950         | 1 8.48 in 1959         | 1 0.00 in 1967         |
| 2 76.6 in 2020         | 2 68.3 in 2005         | 2 8.36 in 1939         | 2 0.04 in 2001         |
| 3 76.5 in 1991         | 68.3 in 1952           | 3 8.35 in 1934         | 3 0.05 in 1963         |
| 4 76.3 in 1994         | 4 68.5 in 1987         | 4 8.15 in 1951         | 4 0.09 in 1981         |
| 5 76.2 in 1922         | 5 68.6 in 1961         | 5 7.71 in 1928         | 5 0.22 in 1977         |
| 6 76.1 in 2011         | 68.6 in 1951           | 6 6.84 in 1997         | 6 0.25 in 1922         |
| 7 75.8 in 1947         | 7 68.7 in 2007         | 7 6.77 in 1957         | 7 0.42 in 1972         |
| 8 75.6 in 1945         | 8 68.9 in 1973         | 8 6.66 in 1920         | 0.42 in 1969           |
| 9 75.4 in 1929         | 9 69.0 in 1983         | 9 5.82 in 1926         | 9 0.43 in 1932         |
| 10 75.2 in 2002        | 10 69.5 in 1931        | 10 5.60 in 1941        | 10 0.44 in 1945        |
| ...                    | 69.5 in 1915           | ...                    | ...                    |
| ...                    | ...                    | <b>21 3.87 in 2021</b> | <b>85 3.87 in 2021</b> |
| <b>24 73.7 in 2021</b> | <b>81 73.7 in 2021</b> | 3.87 in 1992           | 85 3.87 in 1992        |
| 73.7 in 2016           | 73.7 in 2016           | 3.87 in 1918           | 85 3.87 in 1918        |
| 73.7 in 1989           | 73.7 in 1989           |                        |                        |
| 73.7 in 1982           | 73.7 in 1982           |                        |                        |

Normal Temperature for April at LLDF1 = 71.1°

Normal Rainfall for April at LLDF1 = 2.67 in.

---

**WINTER HAVEN AREA** (records began in March 1941):

| Warmest Aprils         | Coolest Aprils         | Wettest Aprils         | Driest Aprils   |
|------------------------|------------------------|------------------------|-----------------|
| 1 78.6 in 2015         | 1 67.0 in 1987         | 1 7.36 in 1951         | 1 0.00 in 1981  |
| 2 77.8 in 1947         | 2 68.5 in 1983         | 2 7.29 in 1941         | 0.00 in 1967    |
| 3 77.5 in 1991         | 68.5 in 1973           | 3 6.51 in 2008         | 3 0.18 in 1963  |
| 4 77.1 in 1945         | 4 69.0 in 1961         | 4 6.34 in 1957         | 4 0.28 in 1946  |
| 5 76.6 in 2002         | 5 69.1 in 1971         | 5 5.55 in 1947         | 5 0.46 in 1952  |
| 6 76.3 in 2011         | 6 69.7 in 2005         | 6 5.30 in 1960         | 6 0.51 in 2017  |
| 7 76.0 in 2020         | 69.7 in 1962           | 7 5.11 in 1997         | 7 0.56 in 2001  |
| 8 75.8 in 1994         | 8 69.9 in 1993         | 8 5.01 in 1959         | 8 0.61 in 1978  |
| 9 75.7 in 1948         | 9 70.0 in 1951         | 9 4.42 in 2018         | 9 0.62 in 1968  |
| 10 75.1 in 2019        | 10 70.1 in 2004        | 4.42 in 1991           | 10 0.64 in 1986 |
| ...                    | ...                    | 11 4.08 in 2010        |                 |
| <b>26 73.5 in 2021</b> | <b>43 73.5 in 2021</b> | 12 4.06 in 2005        |                 |
|                        |                        | 13 4.02 in 1993        |                 |
|                        |                        | 14 3.80 in 1989        |                 |
|                        |                        | 15 3.79 in 1982        |                 |
|                        |                        | <b>16 3.55 in 2021</b> |                 |

Normal Temperature for April at GIF = 72.2°

Normal Rainfall for April at GIF = 2.48 in.



**BARTOW** (records began in June 1892):

| Warmest Aprils         | Coolest Aprils         | Wettest Aprils         | Driest Aprils          |
|------------------------|------------------------|------------------------|------------------------|
| 1 78.7 in 1908         | 1 65.9 in 1926         | 1 9.70 in 1920         | 1 0.00 in 1967         |
| 2 77.2 in 1945         | 2 66.3 in 1901         | 2 8.40 in 1951         | 2 Trace in 2000        |
| 3 76.1 in 1991         | 3 66.9 in 1915         | 3 6.89 in 1941         | Trace in 1907          |
| 4 76.0 in 1999         | 4 67.3 in 1928         | 4 6.69 in 1934         | 4 0.04 in 1922         |
| 76.0 in 1947           | 5 68.0 in 1913         | 5 6.43 in 1937         | 5 0.11 in 1981         |
| 76.0 in 1922           | 6 68.1 in 1987         | 6 6.14 in 1935         | 6 0.17 in 1938         |
| 7 75.9 in 2014         | 7 68.4 in 1950         | 7 6.12 in 1954         | 7 0.20 in 1987         |
| 8 75.7 in 1965         | 68.4 in 1931           | 6.12 in 1895           | 8 0.21 in 2006         |
| 9 75.6 in 2002         | 9 68.8 in 1952         | 9 5.94 in 1933         | 9 0.28 in 2001         |
| 10 75.6 in 1954        | 10 68.9 in 1937        | 10 5.87 in 1991        | 10 0.34 in 1919        |
| ...                    | ...                    | ...                    | ...                    |
| <b>53 72.6 in 2021</b> | <b>64 72.6 in 2021</b> | <b>49 2.91 in 2021</b> | <b>80 2.91 in 2021</b> |

Normal Temperature for April at BARF1 = 72.5°

Normal Rainfall for April at BARF1 = 2.73 in.

---

**SARASOTA-BRADENTON AREA** (records began in January 1911):

| Warmest Aprils         | Coolest Aprils         | Wettest Aprils         | Driest Aprils   |
|------------------------|------------------------|------------------------|-----------------|
| 1 75.9 in 2015         | 1 65.9 in 1987         | 1 10.23 in 1957        | 1 0.00 in 1967  |
| 75.9 in 1945           | 2 67.0 in 1916         | 2 9.82 in 1920         | 2 Trace in 2017 |
| 3 75.2 in 2020         | 3 67.1 in 1915         | 3 8.78 in 1997         | 3 0.01 in 1923  |
| 4 75.1 in 1994         | 4 67.5 in 1931         | 4 7.36 in 2020         | 4 0.03 in 1981  |
| 5 75.0 in 2017         | 5 67.8 in 1986         | 5 7.22 in 1933         | 5 0.08 in 1963  |
| 6 74.9 in 1947         | 6 68.3 in 2005         | 6 7.09 in 1951         | 6 0.10 in 1998  |
| 7 74.6 in 2002         | 68.3 in 1950           | 7 5.55 in 1930         | 7 0.10 in 1922  |
| 8 74.5 in 1954         | 8 68.4 in 1993         | 8 5.11 in 1953         | 8 0.14 in 2006  |
| 9 74.4 in 2013         | 9 68.5 in 1971         | 9 4.87 in 1916         | 0.14 in 2001    |
| 10 74.1 in 2019        | 68.5 in 1940           | 10 4.85 in 1960        | 10 0.15 in 1938 |
| 74.1 in 1965           |                        | 11 4.57 in 1991        |                 |
| ...                    | ...                    | 12 4.56 in 1948        |                 |
| <b>35 72.3 in 2021</b> | <b>74 72.3 in 2021</b> | 13 4.54 in 1928        |                 |
|                        |                        | 14 4.25 in 1962        |                 |
|                        |                        | 15 4.13 in 1942        |                 |
|                        |                        | <b>16 4.09 in 2021</b> |                 |

Normal Temperature for April at SRQ = 71.1°

Normal Rainfall for April at SRQ = 2.44 in.

**VENICE** (records began in May 1955):

| Warmest Aprils         | Coolest Aprils         | Wettest Aprils         | Driest Aprils          |
|------------------------|------------------------|------------------------|------------------------|
| 1 76.9 in 2015         | 1 65.5 in 1987         | 1 13.85 in 1957        | 1 0.00 in 1967         |
| 2 76.2 in 2011         | 2 68.0 in 1986         | 2 7.86 in 1997         | 2 0.06 in 1975         |
| 3 76.1 in 1994         | 3 68.5 in 1993         | 3 6.10 in 1962         | 3 0.07 in 1987         |
| 4 75.9 in 2013         | 4 68.6 in 2005         | 4 5.20 in 1993         | 0.07 in 1978           |
| 5 75.5 in 2002         | 5 68.8 in 1983         | 5 5.18 in 1984         | 5 0.09 in 1963         |
| 6 75.0 in 2020         | 68.8 in 1962           | 6 5.09 in 1991         | 6 0.15 in 2006         |
| 7 74.5 in 2017         | 7 69.0 in 1988         | 7 4.51 in 2013         | 7 0.16 in 2001         |
| 74.5 in 1999           | 8 69.3 in 1984         | 4.51 in 1982           | 8 0.17 in 1970         |
| 9 74.4 in 2012         | 9 69.4 in 2007         | 9 4.12 in 1966         | 9 0.18 in 1999         |
| 10 74.3 in 2019        | 10 69.6 in 1956        | 10 4.01 in 2004        | 10 0.24 in 1972        |
| ...                    | ...                    | ...                    | ...                    |
| <b>36 71.7 in 2021</b> | <b>28 71.7 in 2021</b> | <b>25 2.53 in 2021</b> | <b>42 2.53 in 2021</b> |

Normal Temperature for April at VNCF1 = 71.1°

Normal Rainfall for April at VNCF1 = 2.48 in.

---

**MYAKKA RIVER STATE PARK** (Temperature records began in March 1956  
and Rainfall records began in Sep 1943):

| Warmest Aprils         | Coolest Aprils         | Wettest Aprils         | Driest Aprils          |
|------------------------|------------------------|------------------------|------------------------|
| 1 77.0 in 2015         | 1 66.5 in 1987         | 1 8.93 in 1997         | 1 0.00 in 2001         |
| 2 76.0 in 1999         | 2 67.8 in 1962         | 2 7.85 in 1993         | 2 Trace in 1981        |
| 3 75.7 in 1994         | 3 68.0 in 1961         | 3 7.10 in 1954         | 3 0.02 in 1987         |
| 4 74.8 in 1982         | 4 68.3 in 2005         | 4 7.02 in 1948         | 4 0.04 in 1946         |
| 5 74.7 in 2013         | 5 68.4 in 1986         | 5 6.82 in 1957         | 5 0.10 in 2006         |
| 74.7 in 2011           | 6 68.7 in 1973         | 6 6.54 in 2020         | 6 0.12 in 1970         |
| 74.7 in 1981           | 7 69.2 in 2004         | 7 6.22 in 1951         | 7 0.15 in 1978         |
| 8 74.4 in 2002         | 8 69.3 in 1971         | 8 5.58 in 1995         | 8 0.20 in 1998         |
| 74.4 in 1970           | 9 69.7 in 1983         | 9 5.17 in 2008         | 9 0.33 in 1971         |
| 10 74.2 in 1979        | 10 70.0 in 1963        | 10 5.05 in 1982        | 10 0.43 in 1950        |
| ...                    | ...                    | ...                    | ...                    |
| <b>43 70.9 in 2021</b> | <b>16 70.9 in 2021</b> | <b>25 2.79 in 2021</b> | <b>51 2.79 in 2021</b> |
| 70.9 in 1960           | 16 70.9 in 1960        |                        |                        |

Normal Temperature for April at MKCF1 = 71.6°

Normal Rainfall for April at MKCF1 = 2.59 in.

---

**WAUCHULA 2 N** (records began in January 1933):

| Warmest Aprils         | Coolest Aprils         | Wettest Aprils        | Driest Aprils   |
|------------------------|------------------------|-----------------------|-----------------|
| 1 77.2 in 1945         | 1 65.7 in 1950         | 1 8.26 in 1951        | 1 0.00 in 2001  |
| 2 76.3 in 1947         | 2 66.7 in 1993         | 2 7.75 in 1947        | 0.00 in 1978    |
| 3 75.4 in 2015         | 66.7 in 1987           | 3 6.94 in 1962        | 0.00 in 1967    |
| 4 74.8 in 1968         | 4 66.8 in 2004         | 4 6.60 in 1995        | 4 0.03 in 1963  |
| 5 74.7 in 1991         | 5 67.6 in 1983         | 5 6.55 in 1953        | 5 0.05 in 1971  |
| 6 74.5 in 1970         | 6 67.9 in 1952         | 6 6.44 in 1992        | 6 0.08 in 1981  |
| 7 74.4 in 1975         | 7 68.1 in 1951         | 7 6.36 in 1934        | 7 0.13 in 1970  |
| 8 74.2 in 1965         | 8 68.3 in 2000         | <b>8 6.16 in 2021</b> | 8 0.16 in 1987  |
| 9 74.1 in 2020         | 9 68.5 in 2007         | 9 5.95 in 1997        | 9 0.22 in 1945  |
| 74.1 in 1982           | 68.5 in 1997           | 10 5.44 in 1933       | 10 0.23 in 1975 |
| 74.1 in 1939           |                        |                       |                 |
| ...                    | ...                    |                       |                 |
| <b>54 71.0 in 2021</b> | <b>28 71.0 in 2021</b> |                       |                 |
| 71.0 in 1992           | 71.0 in 1992           |                       |                 |
| 71.0 in 1971           | 71.0 in 1971           |                       |                 |

Normal Temperature for April at WAUF1 = 71.7°

Normal Rainfall for April at WAUF1 = 2.74 in.

-----

**ARCADIA** (records began in November 1899):

| Warmest Aprils  | Coolest Aprils | Wettest Aprils  | Driest Aprils   |
|-----------------|----------------|-----------------|-----------------|
| 1 78.1 in 1908  | 1 66.9 in 1987 | 1 8.34 in 1997  | 1 0.00 in 1987  |
| 2 77.6 in 1912  | 2 67.0 in 1992 | 2 8.08 in 1933  | 0.00 in 1970    |
| 3 77.2 in 1945  | 3 67.2 in 1901 | 3 8.00 in 1951  | 0.00 in 1967    |
| 4 77.0 in 1947  | 4 67.4 in 1950 | 4 5.97 in 1957  | 4 0.02 in 2001  |
| 5 76.4 in 2015  | 5 67.7 in 2004 | 5 5.88 in 1954  | 0.02 in 1903    |
| 6 75.6 in 1911  | 6 67.9 in 1986 | 6 5.84 in 1920  | 6 0.06 in 1977  |
| 7 75.1 in 1954  | 7 68.6 in 1931 | 7 5.64 in 2020  | 7 0.08 in 1981  |
| 8 74.8 in 1991  | 8 68.7 in 2000 | 5.64 in 1939    | 8 0.11 in 1978  |
| 9 74.7 in 1929  | 9 69.0 in 1983 | 9 5.38 in 1930  | 9 0.13 in 1971  |
| 10 74.6 in 2011 | 69.0 in 1952   | 10 5.29 in 2015 | 10 0.14 in 1946 |

Average Temperature for April 1-25, 2021 = 71.2°

Normal Temperature for April at ARCF1 = 70.3°

Total Rainfall for April 1-25, 2021 = 2.31 inches

Normal Rainfall for April at ARCF1 = 2.47 in.

-----

**ARCHBOLD BIO STN** (records began in January 1969):

| Warmest Aprils  | Coolest Aprils  | Wettest Aprils  | Driest Aprils   |
|-----------------|-----------------|-----------------|-----------------|
| 1 76.6 in 2015  | 1 63.0 in 1987  | 1 5.90 in 1972  | 1 0.03 in 2006  |
| 2 75.0 in 2020  | 2 66.4 in 1986  | 2 5.65 in 2015  | 2 0.08 in 1971  |
| 3 74.8 in 1991  | 3 66.7 in 2004  | 3 5.47 in 1997  | 3 0.16 in 1981  |
| 4 74.4 in 2011  | 4 66.9 in 1993  | 4 5.37 in 2013  | 4 0.19 in 1970  |
| 5 74.1 in 1994  | 5 67.4 in 2005  | 5 4.91 in 1992  | 5 0.21 in 1986  |
| 6 73.7 in 1982  | 67.4 in 1983    | 6 4.90 in 1973  | 6 0.42 in 2016  |
| 7 73.5 in 1975  | 7 67.7 in 2000  | 7 4.15 in 1982  | 7 0.43 in 1978  |
| 8 73.4 in 2013  | 8 68.6 in 1971  | 8 4.10 in 2004  | 8 0.52 in 1987  |
| 9 73.1 in 2017  | 9 68.7 in 1992  | 9 3.90 in 1980  | 9 0.59 in 2009  |
| 10 73.0 in 2002 | 10 68.8 in 2007 | 10 3.48 in 2020 | 10 0.69 in 1977 |
| 73.0 in 1981    | 68.8 in 1984    | 3.48 in 1999    |                 |

Average Temperature for April 2021 = Not Available Yet  
Normal Temperature for April at ACHF1 = 69.7°

Total Rainfall for April 2021 = Not Available Yet  
Normal Rainfall for April at ACHF1 = 2.25 in.

---

**PUNTA GORDA AREA** (records began in May 1914):

| Warmest Aprils         | Coolest Aprils         | Wettest Aprils         | Driest Aprils          |
|------------------------|------------------------|------------------------|------------------------|
| 1 78.7 in 1945         | 1 67.9 in 1987         | 1 8.70 in 1920         | 1 0.00 in 1981         |
| 2 78.2 in 1947         | 2 68.7 in 1915         | 2 7.93 in 1957         | 0.00 in 1963           |
| 3 76.9 in 1944         | 3 69.1 in 2004         | 3 7.08 in 1931         | 0.00 in 1946           |
| 4 76.6 in 2015         | 69.1 in 1916           | 4 5.80 in 1994         | 4 Trace in 1975        |
| 76.6 in 1994           | 5 69.2 in 2005         | 5 5.52 in 1941         | Trace in 1967          |
| 6 76.1 in 1954         | 6 69.7 in 1971         | 6 5.36 in 1947         | 6 0.03 in 1922         |
| 7 76.0 in 1991         | 7 70.0 in 1993         | 7 5.20 in 1933         | 7 0.05 in 2006         |
| 76.0 in 1946           | 70.0 in 1986           | 8 5.15 in 1997         | 8 0.09 in 1970         |
| 9 75.9 in 1948         | 9 70.1 in 2000         | 9 5.08 in 1965         | 9 0.10 in 2001         |
| 10 75.8 in 2013        | 10 70.2 in 1950        | 5.08 in 1948           | 10 0.11 in 1987        |
| ...                    | ...                    | ...                    | ...                    |
| <b>34 73.7 in 2021</b> | <b>65 73.7 in 2021</b> | <b>29 2.89 in 2021</b> | <b>75 2.89 in 2021</b> |
| 73.7 in 2019           | 73.7 in 2019           |                        |                        |
| 73.7 in 1999           | 73.7 in 1999           |                        |                        |
| 73.7 in 1939           | 73.7 in 1939           |                        |                        |
| 73.7 in 1933           | 73.7 in 1933           |                        |                        |

Normal Temperature for April at PGD = 71.8°  
Normal Rainfall for April at PGD = 2.43 in.

**FORT MYERS AREA** (records began in January 1902):

| Warmest Aprils         | Coolest Aprils         | Wettest Aprils         | Driest Aprils           |
|------------------------|------------------------|------------------------|-------------------------|
| 1 79.2 in 2020         | 1 68.5 in 1950         | 1 8.42 in 1939         | 1 Trace in 1970         |
| 2 78.8 in 2015         | 2 68.8 in 1987         | 2 7.66 in 1941         | Trace in 1967           |
| 3 77.7 in 2011         | 3 69.3 in 1915         | 3 6.06 in 1933         | Trace in 1903           |
| 77.7 in 1991           | 4 69.6 in 1903         | 4 5.89 in 1930         | 4 0.01 in 2006          |
| 77.7 in 1947           | 5 70.1 in 1983         | 5 5.68 in 1994         | 0.01 in 1946            |
| 6 77.4 in 1994         | 70.1 in 1910           | 6 5.61 in 1916         | 6 0.02 in 1922          |
| 7 77.3 in 1908         | 7 70.2 in 1952         | 7 5.50 in 1949         | 7 0.08 in 1981          |
| 8 76.9 in 2018         | 8 70.4 in 1971         | 8 5.34 in 1995         | 0.08 in 1950            |
| 76.9 in 2013           | 9 70.6 in 1931         | 9 5.01 in 1991         | 9 0.11 in 1974          |
| 76.9 in 2002           | 10 70.8 in 2005        | 10 5.00 in 1997        | 10 0.14 in 1987         |
| 76.9 in 1945           | 70.8 in 1993           | ...                    | ...                     |
| ...                    | 70.8 in 1961           | <b>20 3.73 in 2021</b> | <b>101 3.73 in 2021</b> |
| <b>24 75.3 in 2021</b> | 70.8 in 1907           |                        |                         |
| 75.3 in 1989           | 70.8 in 1902           |                        |                         |
| 75.3 in 1922           | ...                    |                        |                         |
|                        | <b>95 75.3 in 2021</b> |                        |                         |
|                        | 75.3 in 1989           |                        |                         |
|                        | 75.3 in 1922           |                        |                         |

Normal Temperature for April at FMY = 73.8°  
 Normal Rainfall for April at FMY = 2.18 in.

-----

For more Climate information visit our web site at the following link:  
<https://www.weather.gov/tampabay> and then go to the Climate and Past  
 Weather drop down menu above the graphical forecast images.