



NOAA - National Weather Service

Tampa Bay Area

2525 14th Avenue SE, Ruskin, Florida 33570

813-645-2323 <https://weather.gov/tampabay>

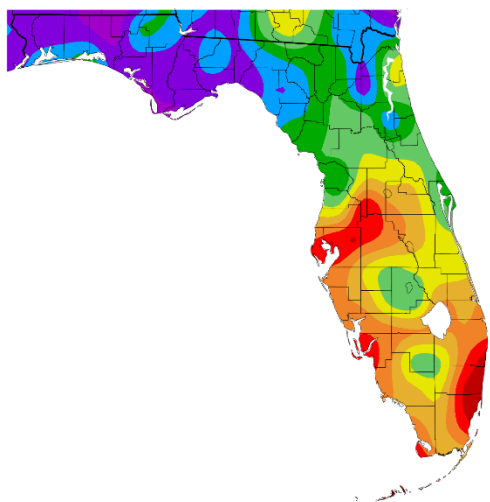
April 2025 Weather Summary for West Central and Southwest Florida

Temperatures averaged about 2.0 to 3.5 degrees Fahrenheit above normal for this April, with several locations ending up in the Top Ten Warmest for the month. This was thanks to many days with high pressure at the surface and aloft keeping a rather warm and dry airmass across the region.

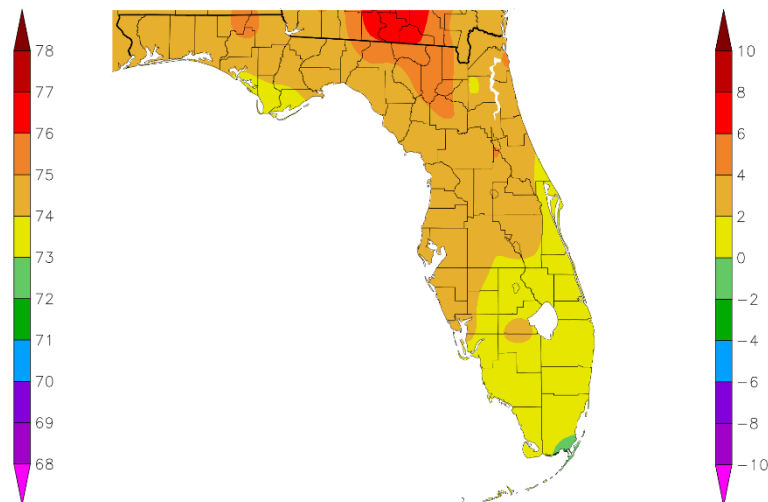
APRIL TEMPERATURE RANKINGS (°F) :

Location	Rank	April 2025 Avg Temp	Normal Apr Temp	Dep fm Normal	Records Began
Tampa Area	2nd Warmest	77.4°	73.9°	+3.5°	Apr 1890
Plant City	3rd Warmest	77.0°	73.5°	+3.5°	Sep 1892
Fort Myers Area	10th Warmest (tie)	76.9°	74.8°	+2.1°	Jan 1902
St Petersburg Area	6th Warmest (tie)	76.6°	74.1°	+2.5°	Aug 1914
Lakeland Area	5th Warmest (tie)	76.3°	73.2°	+3.1°	Jan 1915
Winter Haven Area	8th Warmest	76.1°	73.8°	+2.3°	Mar 1941
Sarasota-Bradenton Area	4th Warmest	75.4°	72.6°	+2.8°	Jan 1911
Punta Gorda Area	17th Warmest	75.2°	73.1°	+2.1°	May 1914
Venice	7th Warmest (tie)	75.0°	72.5°	+2.5°	May 1955
Bartow	17th Warmest (tie)	74.8°	72.5°	+2.3°	Jun 1892
Wauchula	23rd Warmest (tie)	73.2°	71.0°	+2.2°	Jan 1933
Brooksville Area	21st Warmest	72.9°	69.2°	+3.7°	Jan 1892
Chiefland 5 ESE	6th Warmest	71.4°	68.4°	+3.0°	Jul 1956
Inverness 3 SE	27th Warmest	71.2°	68.5°	+2.7°	Jul 1948

Temperature (F)
4/1/2025 - 4/30/2025



Departure from Normal Temperature (F)
4/1/2025 - 4/30/2025



Graphics Source: High Plains Regional Climate Center (HPRCC)

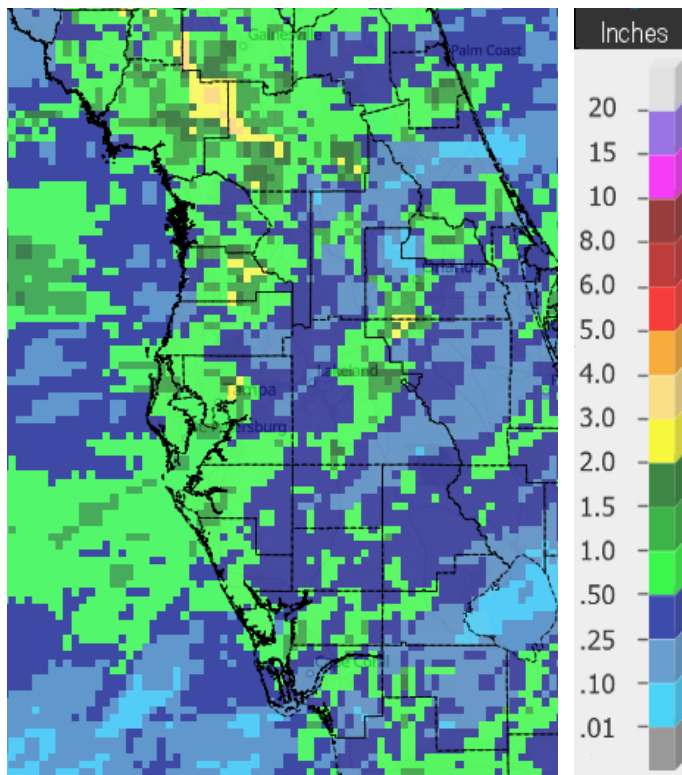
Contact: Paul Close, Paul.Close@noaa.gov

Date: 05/01/2025

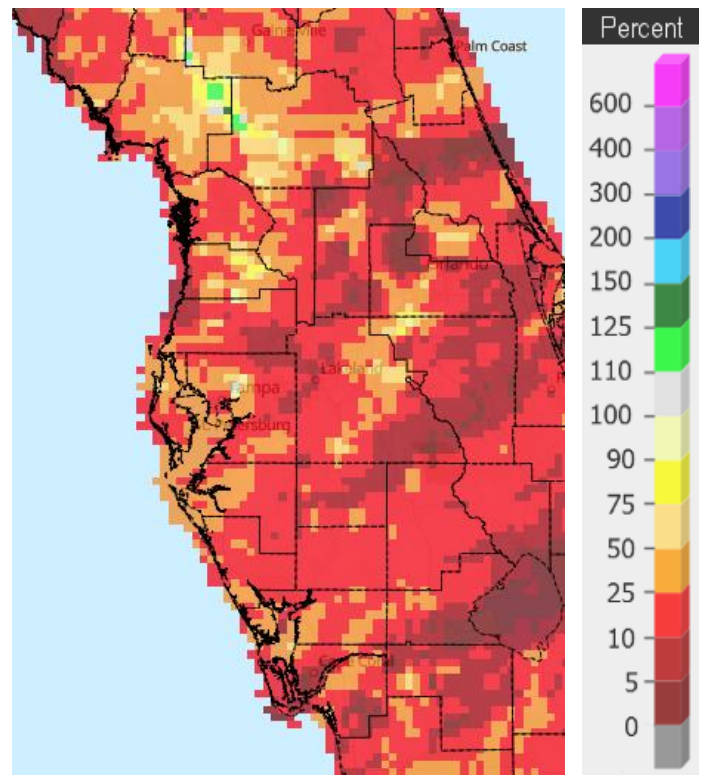
As far as rainfall, April is usually one of the drier months of the year and thanks to the high pressure holding over the region for much of the month many locations ended up with less than 25 percent of normal rainfall placing a few in the Top Ten Driest for April.

APRIL RAINFALL RANKINGS (inches):

Location	Rank	April 2025 Rain Total	Normal Apr Rain	Dep fm Normal	Records Began
Chiefland 5 ESE	29th Driest	1.97	2.97	-1.00	Jul 1956
Sarasota-Bradenton Area	37th Driest	1.16	2.46	-1.30	Jan 1911
Winter Haven Area	15th Driest	0.88	2.50	-1.62	Mar 1941
Brooksville Area	27th Driest	0.81	2.18	-1.37	Jan 1892
Fort Myers Area	32nd Driest	0.76	2.44	-1.68	Jan 1902
Punta Gorda Area	29th Driest	0.68	2.23	-1.55	May 1914
Tampa Area	23rd Driest	0.63	2.55	-1.92	Apr 1890
St. Petersburg Area	24th Driest	0.61	1.93	-1.32	Aug 1914
Wauchula	12th Driest	0.40	2.92	-2.52	Jan 1933
Bartow	10th Driest	0.31	2.72	-2.41	Jun 1892
Inverness 3 SE	5th Driest (tie)	0.26	2.69	-2.43	Jul 1948
Lakeland Area	5th Driest (tie)	0.22	2.82	-2.60	Jan 1915
Plant City	7th Driest	0.21	2.88	-2.67	Jan 1893



April 2025 Rainfall



Percent of Normal Rain

On the following pages are tables of the top ten warmest, coolest, wettest, and driest Aprils at some official NWS locations, which includes the average/total for this April where available, and the 1991-2020 average temperature and rainfall for the month of April.

CHIEFLAND 5 ESE (records began in July 1956):

Warmest Aprils	Coolest Aprils	Wettest Aprils	Driest Aprils
1 73.0 in 1991	1 63.4 in 1961	1 14.61 in 1982	1 0.00 in 1967
2 72.5 in 2002	2 64.8 in 2005	2 8.46 in 1997	2 0.30 in 1963
3 72.2 in 1999	3 64.9 in 2004	3 7.39 in 1995	3 0.31 in 1969
4 71.8 in 1970	4 65.0 in 1962	4 7.16 in 1985	4 0.42 in 2016
5 71.5 in 2020	5 65.3 in 1993	5 7.13 in 1991	5 0.79 in 1989
6 71.4 in 2025	6 65.5 in 2000	6 6.65 in 1957	6 0.80 in 2000
7 71.3 in 2017	7 65.6 in 2007	7 6.48 in 1983	7 0.88 in 2001
71.3 in 2011	8 66.4 in 1966	8 6.22 in 2005	0.88 in 1998
9 71.2 in 1911	9 66.6 in 1984	9 6.20 in 1961	9 0.91 in 1993
71.2 in 1965	10 66.9 in 1986	10 6.12 in 1979	0.91 in 1981
	66.9 in 1983
		38 1.97 in 2025	29 1.97 in 2025
		1.97 in 2002	1.97 in 2002

Normal Temperature for April at CHIF1 = 68.4°

Normal Rainfall for April at CHIF1 = 2.97 in.

INVERNESS 3 SE (records began in July 1948):

Warmest Aprils	Coolest Aprils	Wettest Aprils	Driest Aprils
1 75.5 in 1954	1 64.8 in 1993	1 7.88 in 1953	1 0.00 in 1967
2 74.9 in 2015	2 66.1 in 2004	2 5.89 in 1991	2 0.06 in 2001
3 74.5 in 1968	3 66.2 in 2000	3 5.76 in 2011	3 0.07 in 1998
4 74.3 in 1967	4 66.3 in 2007	4 5.52 in 2021	4 0.20 in 1978
5 74.2 in 2023	5 66.4 in 1996	5 5.49 in 2022	5 0.26 in 2025
6 74.1 in 1965	6 66.8 in 2003	6 5.20 in 1997	0.26 in 1987
7 74.0 in 1970	66.8 in 1992	7 5.15 in 1959	7 0.31 in 1977
8 73.5 in 2002	8 67.1 in 1998	8 5.01 in 2018	0.31 in 1974
9 73.1 in 1969	9 67.3 in 1988	9 5.00 in 1982	9 0.65 in 1999
73.1 in 1963	10 67.4 in 1950	10 4.89 in 1984	10 0.73 in 1968
...	...		
27 71.2 in 2025	45 71.2 in 2025		

Normal Temperature for April at INV1 = 68.5°

Normal Rainfall for April at INV1 = 2.69 in.

BROOKSVILLE AREA (records began in January 1892):

Warmest Aprils	Coolest Aprils	Wettest Aprils	Driest Aprils
1 75.5 in 1947	1 64.3 in 2005	1 14.49 in 1928	1 Trace in 2017
75.5 in 1945	64.3 in 2004	2 8.05 in 1900	Trace in 1967
75.5 in 1929	3 64.8 in 1901	3 7.54 in 1935	3 0.04 in 2001
4 75.2 in 2015	4 65.3 in 2000	4 7.41 in 1949	4 0.10 in 1903
5 74.5 in 1927	5 66.8 in 2007	5 7.38 in 1991	5 0.16 in 1977
6 74.4 in 1994	6 67.1 in 1950	6 6.92 in 1953	6 0.20 in 1981
7 74.3 in 2023	7 67.3 in 1892	7 6.48 in 1937	7 0.21 in 1932
8 74.0 in 1909	8 67.5 in 1998	8 6.39 in 1918	8 0.25 in 2006
9 73.9 in 2020	9 67.6 in 1926	9 6.33 in 1982	9 0.26 in 1998
10 73.8 in 1981	10 67.7 in 1952	10 6.20 in 1926	10 0.32 in 1896
...			...
21 72.9 in 2025			27 0.81 in 2025

Normal Temperature for April at BKV = 69.2°

Normal Rainfall for April at BKV = 2.18 in.

ST. LEO (records began in April 1895):

Warmest Aprils	Coolest Aprils	Wettest Aprils	Driest Aprils
1 76.8 in 1908	1 66.4 in 1931	1 15.55 in 1953	1 Trace in 1967
2 76.0 in 1954	2 66.7 in 1987	2 11.22 in 1928	2 0.06 in 1981
76.0 in 1947	66.7 in 1928	3 7.41 in 1937	0.06 in 1922
4 75.7 in 1945	4 67.7 in 1950	4 7.02 in 1997	4 0.09 in 2001
5 75.5 in 2015	67.7 in 1915	5 6.86 in 1991	5 0.11 in 1903
6 75.4 in 2002	67.7 in 1901	6 6.75 in 1949	6 0.12 in 1963
7 75.3 in 1994	7 68.0 in 1903	6.75 in 1941	7 0.13 in 2017
8 74.9 in 2023	8 68.4 in 1916	8 6.61 in 2018	8 0.20 in 1911
74.9 in 1991	9 68.6 in 1993	9 6.33 in 1895	9 0.21 in 1998
10 74.6 in 2006	10 68.7 in 1913	10 6.32 in 2020	10 0.23 in 1896
74.6 in 1999			

Average Temperature for April 2025 = Not Available Yet

Normal Temperature for April at STLF1 = 71.4°

Total Rainfall for April 2025 = Not Available Yet

Normal Rainfall for April at STLF1 = 3.06 in.

TARPON SPRINGS (records began in January 1892):

Warmest Aprils	Coolest Aprils	Wettest Aprils	Driest Aprils
1 76.5 in 2015	1 65.7 in 1987	1 7.63 in 1931	1 0.00 in 1967
2 76.4 in 1947	2 67.1 in 1915	2 7.20 in 1942	2 Trace in 1896
3 76.0 in 1991	3 67.2 in 1962	3 6.97 in 1949	3 0.05 in 1922
4 75.3 in 1945	4 67.4 in 1950	4 6.66 in 1928	4 0.07 in 1981
5 75.1 in 1994	67.4 in 1940	5 6.31 in 1953	0.07 in 1972
6 75.0 in 2020	6 67.5 in 1903	6 6.01 in 1957	6 0.08 in 1923
7 74.9 in 1948	7 67.8 in 1916	7 6.00 in 2020	7 0.16 in 1998
8 74.8 in 1922	8 67.9 in 1971	8 5.97 in 1933	8 0.18 in 1903
74.8 in 1912	67.9 in 1961	9 5.90 in 1959	9 0.20 in 2017
10 74.7 in 2002	67.9 in 1910	10 5.70 in 1941	10 0.23 in 1910
74.7 in 1929			

Average Temperature for April 1-27, 2025 = 74.6°

Normal Temperature for April at TRPF1 = 72.2°

Total Rainfall for April 1-27, 2025 = 1.04 inches

Normal Rainfall for April at TRPF1 = 2.69 in.

TAMPA AREA (records began in April 1890):

Warmest Aprils	Coolest Aprils	Wettest Aprils	Driest Aprils
1 78.0 in 2015	1 66.3 in 1987	1 10.71 in 1997	1 Trace in 1981
2 77.4 in 2025	2 66.7 in 1901	2 8.04 in 1920	Trace in 1967
3 77.1 in 2017	3 67.2 in 1993	3 7.23 in 1931	3 0.02 in 2001
4 77.0 in 2023	4 67.7 in 1950	4 6.76 in 2022	4 0.05 in 1969
5 76.9 in 2022	5 68.1 in 1903	5 6.73 in 2020	5 0.16 in 1922
6 76.8 in 1991	6 68.2 in 1899	6 6.59 in 1957	0.16 in 1898
7 76.6 in 1947	7 68.6 in 1983	7 6.14 in 1933	7 0.21 in 1963
8 76.4 in 1908	68.6 in 1961	8 5.75 in 1926	8 0.31 in 1892
9 76.3 in 2011	68.6 in 1915	9 5.48 in 1959	9 0.35 in 1938
76.3 in 2002	68.6 in 1891	10 5.38 in 1895	10 0.37 in 1946
			...
			23 0.63 in 2025

Normal Temperature for April at TPA = 73.9°

Normal Rainfall for April at TRA = 2.55 in.

ST. PETERSBURG (records began in August 1914):

Warmest Aprils	Coolest Aprils	Wettest Aprils	Driest Aprils
1 78.6 in 2015	1 68.5 in 1950	1 9.73 in 1997	1 0.00 in 1967
2 77.2 in 2023	2 68.7 in 1987	2 9.09 in 1920	2 Trace in 1981
3 77.0 in 2011	3 68.9 in 1993	3 8.45 in 1951	3 0.01 in 1974
77.0 in 1947	4 69.2 in 1952	4 7.69 in 1933	4 0.04 in 2001
5 76.9 in 2002	5 69.3 in 1983	5 7.39 in 1957	5 0.07 in 1987
6 76.6 in 2025	6 70.1 in 1916	6 7.20 in 2003	6 0.11 in 1998
76.6 in 1991	7 70.2 in 1915	7 6.16 in 1960	7 0.24 in 1932
8 76.5 in 2020	8 70.4 in 1951	8 6.09 in 1948	8 0.25 in 1977
76.5 in 2013	9 70.6 in 1931	9 5.81 in 1931	9 0.27 in 2006
10 76.1 in 1929	10 70.8 in 1996	10 5.46 in 1941	0.27 in 1963
	70.8 in 1961		...
			24 0.61 in 2025

Normal Temperature for April at SPG = 74.1°

Normal Rainfall for April at SPG = 1.93 in.

PLANT CITY (Temperature records began in Sep 1892 and
Rainfall records began in Jan 1893):

Warmest Aprils	Coolest Aprils	Wettest Aprils	Driest Aprils
1 77.9 in 2023	1 65.0 in 1901	1 7.29 in 1931	1 0.00 in 2001
2 77.2 in 2020	2 65.5 in 1987	2 7.13 in 1957	0.00 in 1981
3 77.0 in 2025	3 65.9 in 1931	3 7.11 in 1933	0.00 in 1967
4 76.9 in 2015	4 67.4 in 1932	4 6.56 in 1928	4 0.16 in 1987
5 76.1 in 1947	5 67.6 in 1983	5 6.53 in 1941	5 0.20 in 1923
6 75.9 in 1912	67.6 in 1902	6 6.40 in 1937	0.20 in 1911
7 75.8 in 1911	7 67.7 in 2005	7 6.36 in 1947	7 0.21 in 2025
8 75.7 in 1945	8 67.9 in 1993	8 6.06 in 1997	8 0.26 in 1938
9 75.6 in 2011	9 68.0 in 1940	9 6.00 in 1951	9 0.27 in 1963
10 75.5 in 1991	10 68.2 in 1925	10 5.78 in 1959	10 0.31 in 1977

Normal Temperature for April at PLCF1 = 73.5°

Normal Rainfall for April at PLCF1 = 2.88 in.

LAKELAND AREA (records began in January 1915):

Warmest Aprils	Coollest Aprils	Wettest Aprils	Driest Aprils
1 77.2 in 2015	1 67.3 in 1950	1 8.48 in 1959	1 0.00 in 1967
2 77.0 in 2023	2 68.3 in 2005	2 8.36 in 1939	2 0.04 in 2001
3 76.6 in 2020	68.3 in 1952	3 8.35 in 1934	3 0.05 in 1963
4 76.5 in 1991	4 68.5 in 1987	4 8.15 in 1951	4 0.09 in 1981
5 76.3 in 2025	5 68.6 in 1961	5 7.71 in 1928	5 0.22 in 2025
76.3 in 1994	68.6 in 1951	6 6.84 in 1997	0.22 in 1977
7 76.2 in 1922	7 68.7 in 2007	7 6.77 in 1957	7 0.25 in 1922
8 76.1 in 2011	8 68.9 in 1973	8 6.66 in 1920	8 0.42 in 1972
9 75.8 in 1947	9 69.0 in 1983	9 5.82 in 1926	0.42 in 1969
10 75.6 in 1945	10 69.5 in 1931	10 5.60 in 1941	10 0.43 in 1932
	69.5 in 1915		

Normal Temperature for April at LLDF1 = 73.2°

Normal Rainfall for April at LLDF1 = 2.82 in.

WINTER HAVEN AREA (records began in March 1941):

Warmest Aprils	Coollest Aprils	Wettest Aprils	Driest Aprils
1 78.6 in 2015	1 67.0 in 1987	1 7.36 in 1951	1 0.00 in 1981
2 77.8 in 1947	2 68.5 in 1983	2 7.29 in 1941	0.00 in 1967
3 77.5 in 1991	68.5 in 1973	3 6.51 in 2008	3 0.18 in 1963
4 77.1 in 1945	4 69.0 in 1961	4 6.34 in 1957	4 0.28 in 1946
5 76.6 in 2002	5 69.1 in 1971	5 5.55 in 1947	5 0.46 in 1952
6 76.3 in 2011	6 69.7 in 2005	6 5.30 in 1960	6 0.51 in 2017
7 76.2 in 2023	69.7 in 1962	7 5.11 in 1997	7 0.56 in 2001
8 76.1 in 2025	8 69.9 in 1993	8 5.01 in 1959	8 0.61 in 1978
9 76.0 in 2020	9 70.0 in 1951	9 4.42 in 2018	9 0.62 in 1968
10 75.8 in 1994	10 70.1 in 2004	4.42 in 1991	10 0.64 in 1986
			11 0.67 in 1971
			12 0.72 in 1977
			13 0.73 in 1979
			14 0.86 in 1949
			15 0.88 in 2025

Normal Temperature for April at GIF = 73.8°

Normal Rainfall for April at GIF = 2.50 in.

BARTOW (records began in June 1892):

Warmest Aprils	Coolest Aprils	Wettest Aprils	Driest Aprils
1 78.7 in 1908	1 65.9 in 1926	1 9.70 in 1920	1 0.00 in 1967
2 77.2 in 1945	2 66.3 in 1901	2 8.40 in 1951	2 Trace in 2000
3 76.1 in 1991	3 66.9 in 1915	3 6.89 in 1941	Trace in 1907
4 76.0 in 1999	4 67.3 in 1928	4 6.69 in 1934	4 0.04 in 1922
76.0 in 1947	5 68.0 in 1913	5 6.43 in 1937	5 0.11 in 1981
76.0 in 1922	6 68.1 in 1987	6 6.14 in 1935	6 0.17 in 1938
7 75.9 in 2023	7 68.4 in 1950	7 6.12 in 1954	7 0.20 in 1987
75.9 in 2014	68.4 in 1931	6.12 in 1895	8 0.21 in 2006
9 75.7 in 1965	9 68.8 in 1952	9 5.94 in 1933	9 0.28 in 2001
10 75.6 in 2002	10 68.9 in 1937	10 5.87 in 1991	10 0.31 in 2025
75.6 in 1954			
...			
17 74.8 in 2025			
74.8 in 2020			
74.8 in 1968			

Normal Temperature for April at BARF1 = 72.5°

Normal Rainfall for April at BARF1 = 2.72 in.

SARASOTA-BRADENTON AREA (records began in January 1911):

Warmest Aprils	Coolest Aprils	Wettest Aprils	Driest Aprils
1 76.2 in 2023	1 65.9 in 1987	1 10.23 in 1957	1 0.00 in 1967
2 75.9 in 2015	2 67.0 in 1916	2 9.82 in 1920	2 Trace in 2017
75.9 in 1945	3 67.1 in 1915	3 8.78 in 1997	3 0.01 in 1923
4 75.4 in 2025	4 67.5 in 1931	4 7.36 in 2020	4 0.03 in 1981
5 75.2 in 2020	5 67.8 in 1986	5 7.22 in 1933	5 0.08 in 1963
6 75.1 in 1994	6 68.3 in 2005	6 7.09 in 1951	6 0.10 in 1998
7 75.0 in 2017	68.3 in 1950	7 5.55 in 1930	7 0.10 in 1922
8 74.9 in 1947	8 68.4 in 1993	8 5.11 in 1953	8 0.14 in 2006
9 74.6 in 2002	9 68.5 in 1971	9 4.87 in 1916	0.14 in 2001
10 74.5 in 2022	68.5 in 1940	10 4.85 in 1960	10 0.15 in 1938
74.5 in 1954	
		79 1.16 in 2025	37 1.16 in 2025

Normal Temperature for April at SRQ = 72.6°

Normal Rainfall for April at SRQ = 2.46 in.

VENICE (records began in May 1955):

Warmest Aprils	Coolest Aprils	Wettest Aprils	Driest Aprils
1 76.9 in 2015	1 65.5 in 1987	1 13.85 in 1957	1 0.00 in 1967
2 76.6 in 2023	2 68.0 in 1986	2 7.86 in 1997	2 0.06 in 1975
3 76.2 in 2011	3 68.5 in 1993	3 6.10 in 1962	3 0.07 in 1987
4 76.1 in 1994	4 68.6 in 2005	4 5.20 in 1993	0.07 in 1978
5 75.9 in 2013	5 68.8 in 1983	5 5.18 in 1984	5 0.09 in 1963
6 75.5 in 2002	68.8 in 1962	6 5.09 in 1991	6 0.15 in 2006
7 75.0 in 2025	7 69.0 in 1988	7 4.51 in 2013	7 0.16 in 2001
75.0 in 2020	8 69.3 in 1984	4.51 in 1982	8 0.17 in 1970
9 74.5 in 2017	9 69.4 in 2007	9 4.12 in 1966	9 0.18 in 1999
74.5 in 1999	10 69.6 in 1956	10 4.01 in 2004	10 0.24 in 1972

Normal Temperature for April at VNCF1 = 72.5°

Total Rainfall for April 1-29, 2025 = Few Days Missing

Normal Rainfall for April at VNCF1 = 2.47 in.

MYAKKA RIVER STATE PARK (Temperature records began in March 1956
and Rainfall records began in Sep 1943):

Warmest Aprils	Coolest Aprils	Wettest Aprils	Driest Aprils
1 77.0 in 2015	1 66.5 in 1987	1 8.93 in 1997	1 0.00 in 2001
2 76.0 in 1999	2 67.8 in 1962	2 7.85 in 1993	2 Trace in 1981
3 75.7 in 1994	3 68.0 in 1961	3 7.10 in 1954	3 0.02 in 1987
4 74.9 in 2023	4 68.3 in 2005	4 7.02 in 1948	4 0.04 in 1946
5 74.8 in 1982	5 68.4 in 1986	5 6.82 in 1957	5 0.10 in 2006
6 74.7 in 2013	6 68.7 in 1973	6 6.54 in 2020	6 0.12 in 1970
74.7 in 2011	7 69.2 in 2004	7 6.22 in 1951	7 0.15 in 1978
74.7 in 1981	8 69.3 in 1971	8 5.58 in 1995	8 0.20 in 1998
9 74.4 in 2002	9 69.7 in 1983	9 5.17 in 2008	9 0.33 in 1971
74.4 in 1970	10 69.8 in 2024	10 5.05 in 1982	10 0.43 in 1950

Average Temperature for April 2025 = Not Available Yet

Normal Temperature for April at MKCF1 = 72.5°

Total Rainfall for April 2025 = Not Available Yet

Normal Rainfall for April at MKCF1 = 2.98 in.

WAUCHULA (records began in January 1933):

Warmest Aprils	Coolest Aprils	Wettest Aprils	Driest Aprils
1 77.2 in 1945	1 65.7 in 1950	1 8.26 in 1951	1 0.00 in 2001
2 76.3 in 1947	2 66.7 in 1993	2 7.75 in 1947	0.00 in 1978
3 75.6 in 2023	66.7 in 1987	3 6.94 in 1962	0.00 in 1967
4 75.4 in 2015	4 66.8 in 2004	4 6.60 in 1995	4 0.03 in 1963
5 74.8 in 1968	5 67.6 in 1983	5 6.55 in 1953	5 0.05 in 1971
6 74.7 in 1991	6 67.9 in 1952	6 6.44 in 1992	6 0.08 in 1981
7 74.5 in 1970	7 68.1 in 1951	7 6.36 in 1934	7 0.13 in 1970
8 74.4 in 1975	8 68.3 in 2000	8 6.16 in 2021	8 0.16 in 1987
9 74.2 in 1965	9 68.5 in 2007	9 5.95 in 1997	9 0.22 in 1945
10 74.1 in 2020	68.5 in 1997	10 5.44 in 1933	10 0.23 in 1975
74.1 in 1982			11 0.28 in 1977
74.1 in 1939			12 0.40 in 2025
...			
23 73.2 in 2025			
73.2 in 2002			

Normal Temperature for April at WAUF1 = 71.0°

Normal Rainfall for April at WAUF1 = 2.92 in.

ARCHBOLD BIO STN (records began in January 1969):

Warmest Aprils	Coolest Aprils	Wettest Aprils	Driest Aprils
1 76.6 in 2015	1 63.0 in 1987	1 9.53 in 2021	1 0.03 in 2006
2 75.0 in 2023	2 66.4 in 1986	2 5.90 in 1972	2 0.08 in 1971
75.0 in 2020	3 66.7 in 2004	3 5.65 in 2015	3 0.16 in 1981
4 74.8 in 1991	4 66.9 in 1993	4 5.64 in 2023	4 0.19 in 1970
5 74.4 in 2011	5 67.4 in 2005	5 5.47 in 1997	5 0.21 in 1986
6 74.1 in 1994	67.4 in 1983	6 5.37 in 2013	6 0.42 in 2016
7 73.7 in 1982	7 67.7 in 2000	7 4.91 in 1992	7 0.43 in 1978
8 73.5 in 1975	8 68.6 in 1971	8 4.90 in 1973	8 0.52 in 1987
9 73.4 in 2013	9 68.7 in 1992	9 4.15 in 1982	9 0.59 in 2009
10 73.1 in 2017	10 68.8 in 2007	10 4.10 in 2004	10 0.62 in 2024
	68.8 in 1984		

Average Temperature for April 1-28, 2025 = 72.1°

Normal Temperature for April at ACHF1 = 71.7°

Total Rainfall for April 1-28, 2025 = 0.35 in

Normal Rainfall for April at ACHF1 = 2.54 in.

PUNTA GORDA AREA (records began in May 1914):

Warmest Aprils	Coolest Aprils	Wettest Aprils	Driest Aprils
1 78.7 in 1945	1 67.9 in 1987	1 8.70 in 1920	1 0.00 in 1981
2 78.2 in 1947	2 68.7 in 1915	2 7.93 in 1957	0.00 in 1963
3 76.9 in 1944	3 69.1 in 2004	3 7.08 in 1931	0.00 in 1946
4 76.6 in 2023	69.1 in 1916	4 6.07 in 2023	4 Trace in 1975
76.6 in 2015	5 69.2 in 2005	5 5.80 in 1994	Trace in 1967
76.6 in 1994	6 69.7 in 1971	6 5.52 in 1941	6 0.03 in 1922
7 76.1 in 1954	7 70.0 in 1993	7 5.36 in 1947	7 0.05 in 2006
8 76.0 in 1991	70.0 in 1986	8 5.20 in 1933	8 0.09 in 1970
76.0 in 1946	9 70.1 in 2000	9 5.15 in 1997	9 0.10 in 2001
10 75.9 in 1948	10 70.2 in 1950	10 5.08 in 1965	10 0.11 in 1987
...		5.08 in 1948	...
17 75.2 in 2025			29 0.68 in 2025

Normal Temperature for April at PGD = 73.1°

Normal Rainfall for April at PGD = 2.23 in.

FORT MYERS AREA (records began in January 1902):

Warmest Aprils	Coolest Aprils	Wettest Aprils	Driest Aprils
1 79.2 in 2020	1 68.5 in 1950	1 8.42 in 1939	1 Trace in 1970
2 79.0 in 2023	2 68.8 in 1987	2 7.66 in 1941	Trace in 1967
3 78.8 in 2015	3 69.3 in 1915	3 6.06 in 1933	Trace in 1903
4 77.7 in 2011	4 69.6 in 1903	4 5.89 in 1930	4 0.01 in 2006
77.7 in 1991	5 70.1 in 1983	5 5.83 in 2022	0.01 in 1946
77.7 in 1947	70.1 in 1910	6 5.68 in 1994	6 0.02 in 1922
7 77.5 in 2022	7 70.2 in 1952	7 5.61 in 1916	7 0.08 in 1981
8 77.4 in 1994	8 70.4 in 1971	8 5.50 in 1949	0.08 in 1950
9 77.3 in 1908	9 70.6 in 1931	9 5.34 in 1995	9 0.11 in 1974
10 76.9 in 2025	10 70.8 in 2005	10 5.01 in 1991	10 0.14 in 1987
76.9 in 2018	70.8 in 1993
76.9 in 2013	70.8 in 1961	92 0.76 in 2025	32 0.76 in 2025
76.9 in 2002	70.8 in 1907		
76.9 in 1945	70.8 in 1902		

Normal Temperature for April at FMY = 74.8°

Normal Rainfall for April at FMY = 2.44 in.

For more Climate information visit our web site at the following link:
<https://www.weather.gov/tampabay> and then go to the Climate and Past
Weather drop down menu above the graphical forecast images.