



NOAA - National Weather Service

Tampa Bay Area

2525 14th Avenue SE, Ruskin, Florida 33570

813-645-2323 <https://weather.gov/tampabay>

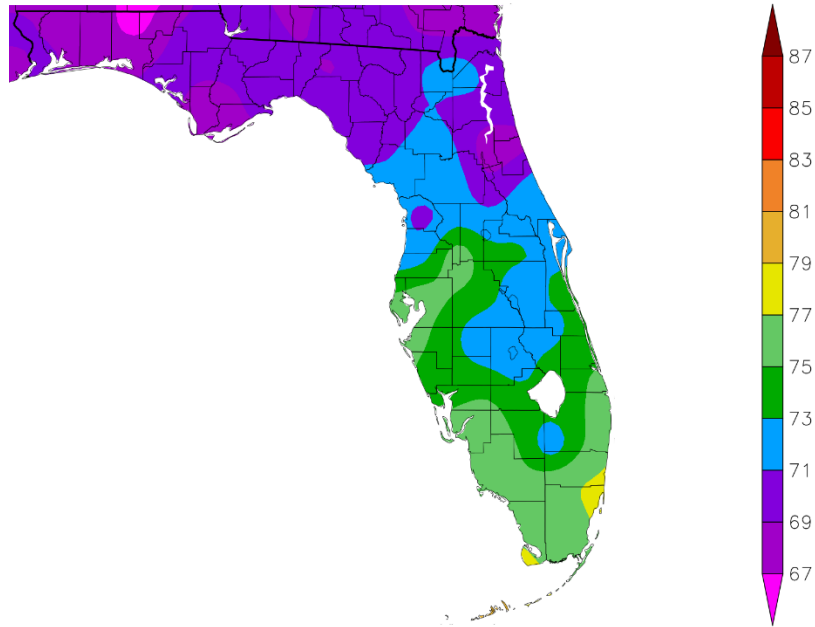
April 2026 Weather Summary for West Central and Southwest Florida

As is pretty typical for April we saw many days with high pressure at the surface and aloft keeping a rather warm and dry airmass across the region. For the month temperatures averaged from about 0.5 to over 4 degrees Fahrenheit above normal, with a couple of locations ending up in the Top Ten Warmest for the month.

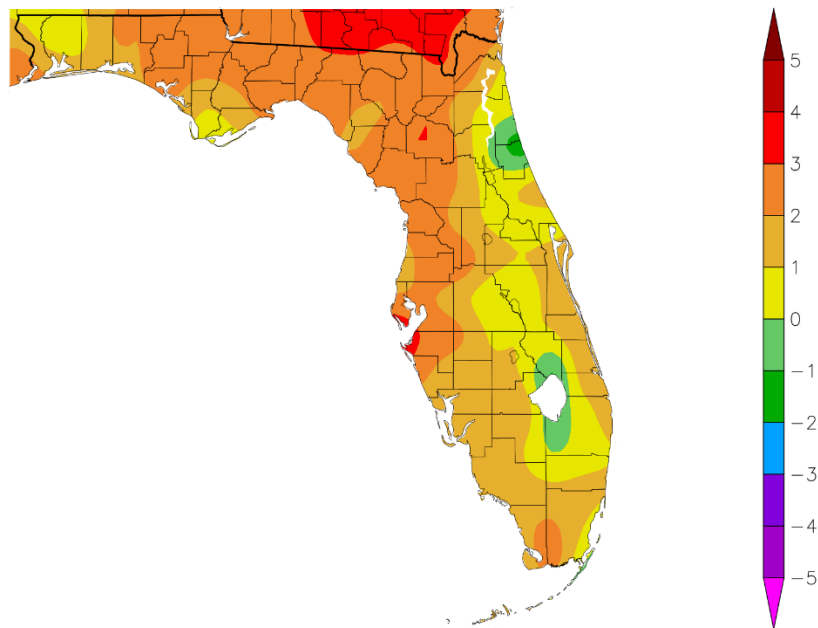
APRIL TEMPERATURE RANKINGS (°F):

Location	Rank	April 2026 Avg Temp	Normal Apr Temp	Dep fm Normal	Records Began
St Petersburg Area	2nd Warmest (tie)	78.5°	74.1°	+4.4°	Aug 1914
Fort Myers Area	17th Warmest (tie)	76.4°	74.8°	+1.6°	Jan 1902
Tampa Area	12th Warmest	75.9°	73.9°	+2.0°	Apr 1890
Sarasota-Bradenton Area	4th Warmest	75.8°	72.6°	+3.2°	Jan 1911
Lakeland Area	11th Warmest	75.5°	73.2°	+2.3°	Jan 1915
Plant City	13th Warmest	75.0°	73.5°	+1.5°	Sep 1892
Winter Haven Area	18th Warmest (tie)	74.7°	73.8°	+0.9°	Mar 1941
Venice	12th Warmest (tie)	74.3°	72.5°	+1.8°	May 1955
Punta Gorda Area	27th Warmest (tie)	74.2°	73.1°	+1.1°	May 1914
St. Leo	28th Warmest (tie)	73.2°	71.4°	+1.8°	Apr 1895
Tarpon Springs	30th Warmest (tie)	73.0°	72.2°	+0.8°	Jan 1892
Bartow	48th Warmest	73.0°	72.5°	+0.5°	Jun 1892
Archbold Bio Stn	17th Warmest (tie)	72.5°	71.7°	+0.8°	Jan 1969
Wauchula	37th Warmest (tie)	72.3°	71.0°	+1.3°	Jan 1933
Brooksville Area	35th Warmest (tie)	72.0°	69.2°	+2.8°	Jan 1892
Inverness 3 SE	32nd Warmest	70.9°	68.5°	+2.4°	Jul 1948

Temperature (F)
4/1/2026 - 4/30/2026



Departure from Normal Temperature (F)
4/1/2026 - 4/30/2026

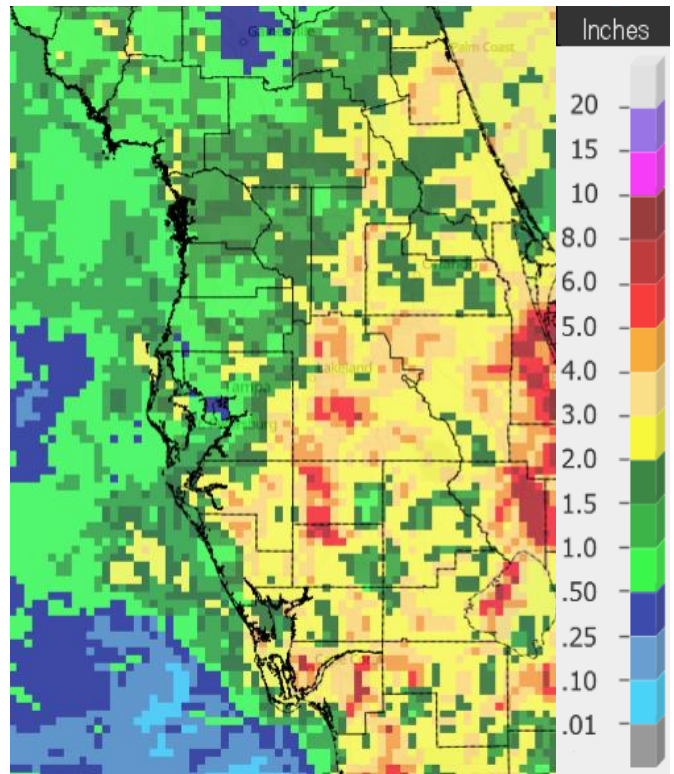


Graphics Source: High Plains Regional Climate Center (HPRCC)

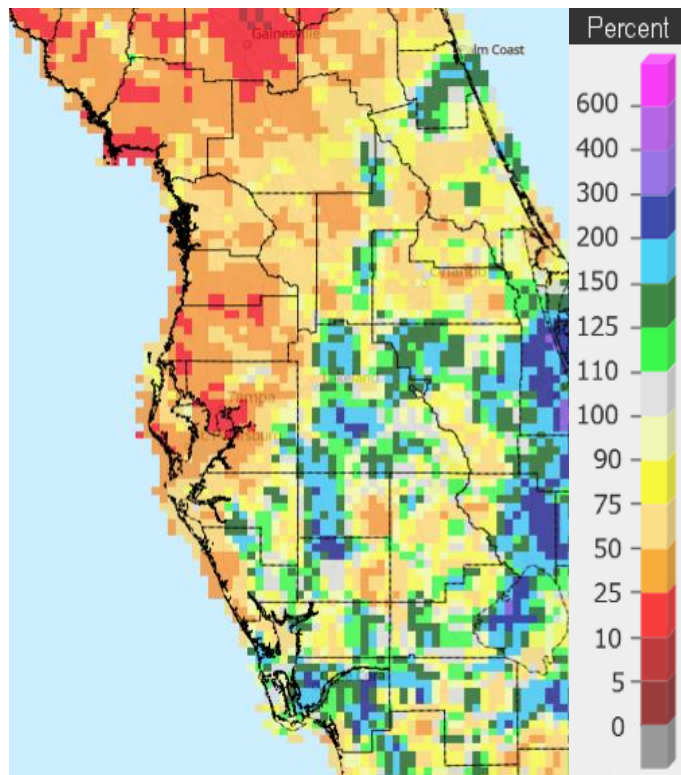
As for rainfall, April is usually one of the drier months of the year. However, we saw a few days that were more like an early summerlike pattern during the month with scattered showers and thunderstorms. This helped place parts of the interior south into southwest Florida above normal, while much of the Tampa Bay area north ended up much below normal.

APRIL RAINFALL RANKINGS (inches):

Location	Rank	April 2026 Rain Total	Normal Apr Rain	Dep fm Normal	Records Began
Bartow	27th Wettest	4.34	2.72	+1.62	Jun 1892
Winter Haven Area	22nd Wettest	3.10	2.50	+0.60	Mar 1941
Wauchula	33rd Wettest	2.93	2.92	+0.01	Jan 1933
Archbold Bio Stn	22nd Wettest (tie)	2.57	2.54	+0.03	Jan 1969
Punta Gorda Area	37th Wettest	2.57	2.23	+0.34	May 1914
Fort Myers Area	72nd Driest	1.83	2.44	-0.61	Jan 1902
Sarasota-Bradenton Area	57th Driest	1.67	2.46	-0.79	Jan 1911
Lakeland Area	40th Driest	1.40	2.82	-1.42	Jan 1915
Inverness 3 SE	21st Driest	1.28	2.69	-1.41	Jul 1948
Venice	28th Driest	1.22	2.47	-1.25	May 1955
Tarpon Springs	45th Driest	1.19	2.69	-1.50	Jan 1892
Plant City	34th Driest	1.07	2.88	-1.81	Jan 1893
St. Petersburg Area	36th Driest	1.05	1.93	-0.88	Aug 1914
St. Leo	28th Driest	0.95	3.06	-2.11	Apr 1895
Brooksville Area	28th Driest	0.86	2.18	-1.32	Jan 1892
Tampa Area	26th Driest	0.68	2.55	-1.87	Apr 1890



April 2026 Rainfall



Percent of Normal Rain

On the following pages are tables of the top ten warmest, coolest, wettest, and driest Aprils at some official NWS locations, which includes the average/total for this April where available, and the 1991-2020 average temperature and rainfall for the month of April.

CHIEFLAND 5 ESE (records began in July 1956):

Warmest Aprils	Coolest Aprils	Wettest Aprils	Driest Aprils
1 73.0 in 1991	1 63.4 in 1961	1 14.61 in 1982	1 0.00 in 1967
2 72.5 in 2002	2 64.8 in 2005	2 8.46 in 1997	2 0.30 in 1963
3 72.2 in 1999	3 64.9 in 2004	3 7.39 in 1995	3 0.31 in 1969
4 71.8 in 1970	4 65.0 in 1962	4 7.16 in 1985	4 0.42 in 2016
5 71.5 in 2020	5 65.3 in 1993	5 7.13 in 1991	5 0.79 in 1989
6 71.3 in 2017	6 65.5 in 2000	6 6.65 in 1957	6 0.80 in 2000
71.3 in 2011	7 65.6 in 2007	7 6.48 in 1983	7 0.88 in 2001
8 71.2 in 2025	8 66.4 in 1966	8 6.22 in 2005	0.88 in 1998
71.2 in 1911	9 66.6 in 1984	9 6.20 in 1961	9 0.91 in 1993
71.2 in 1965	10 66.9 in 1986	10 6.12 in 1979	0.91 in 1981
	66.9 in 1983		

Average Temperature for April 2026 = Not Available Yet
 Normal Temperature for April at CHIF1 = 68.4°

Total Rainfall for April 2026 = Not Available Yet
 Normal Rainfall for April at CHIF1 = 2.97 in.

INVERNESS 3 SE (records began in July 1948):

Warmest Aprils	Coolest Aprils	Wettest Aprils	Driest Aprils
1 75.5 in 1954	1 64.8 in 1993	1 7.88 in 1953	1 0.00 in 1967
2 74.9 in 2015	2 66.1 in 2004	2 5.89 in 1991	2 0.06 in 2001
3 74.5 in 1968	3 66.2 in 2000	3 5.76 in 2011	3 0.07 in 1998
4 74.3 in 1967	4 66.3 in 2007	4 5.52 in 2021	4 0.20 in 1978
5 74.2 in 2023	5 66.4 in 1996	5 5.49 in 2022	5 0.26 in 2025
6 74.1 in 1965	6 66.8 in 2003	6 5.20 in 1997	0.26 in 1987
7 74.0 in 1970	66.8 in 1992	7 5.15 in 1959	7 0.31 in 1977
8 73.5 in 2002	8 67.1 in 1998	8 5.01 in 2018	0.31 in 1974
9 73.1 in 1969	9 67.3 in 1988	9 5.00 in 1982	9 0.65 in 1999
73.1 in 1963	10 67.4 in 1950	10 4.89 in 1984	10 0.73 in 1968
...
32 70.9 in 2026	41 70.9 in 2026		21 1.28 in 2026

Normal Temperature for April at INV1 = 68.5°
 Normal Rainfall for April at INV1 = 2.69 in.

BROOKSVILLE AREA (records began in January 1892):

Warmest Aprils	Coolest Aprils	Wettest Aprils	Driest Aprils
1 75.5 in 1947	1 64.3 in 2005	1 14.49 in 1928	1 Trace in 2017
75.5 in 1945	64.3 in 2004	2 8.05 in 1900	Trace in 1967
75.5 in 1929	3 64.8 in 1901	3 7.54 in 1935	3 0.04 in 2001
4 75.2 in 2015	4 65.3 in 2000	4 7.41 in 1949	4 0.10 in 1903
5 74.5 in 1927	5 66.8 in 2007	5 7.38 in 1991	5 0.16 in 1977
6 74.4 in 1994	6 67.1 in 1950	6 6.92 in 1953	6 0.20 in 1981
7 74.3 in 2023	7 67.3 in 1892	7 6.48 in 1937	7 0.21 in 1932
8 74.0 in 1909	8 67.5 in 1998	8 6.39 in 1918	8 0.25 in 2006
9 73.9 in 2020	9 67.6 in 1926	9 6.33 in 1982	9 0.26 in 1998
10 73.8 in 1981	10 67.7 in 1952	10 6.20 in 1926	10 0.32 in 1896
...
35 72.0 in 2026	78 72.0 in 2026		28 0.86 in 2026
72.0 in 1995	72.0 in 1995		
72.0 in 1914	72.0 in 1914		

Normal Temperature for April at BKV = 69.2°

Normal Rainfall for April at BKV = 2.18 in.

ST. LEO (records began in April 1895):

Warmest Aprils	Coolest Aprils	Wettest Aprils	Driest Aprils
1 76.8 in 1908	1 66.4 in 1931	1 15.55 in 1953	1 Trace in 1967
2 76.0 in 1954	2 66.7 in 1987	2 11.22 in 1928	2 0.06 in 1981
76.0 in 1947	66.7 in 1928	3 7.41 in 1937	0.06 in 1922
4 75.7 in 1945	4 67.7 in 1950	4 7.02 in 1997	4 0.09 in 2001
5 75.5 in 2015	67.7 in 1915	5 6.86 in 1991	5 0.11 in 1903
6 75.4 in 2002	67.7 in 1901	6 6.75 in 1949	6 0.12 in 1963
7 75.3 in 1994	7 68.0 in 1903	6.75 in 1941	7 0.13 in 2017
8 74.9 in 2023	8 68.4 in 1916	8 6.61 in 2018	8 0.20 in 1911
74.9 in 1991	9 68.6 in 1993	9 6.33 in 1895	9 0.21 in 1998
10 74.6 in 2006	10 68.7 in 1913	10 6.32 in 2020	10 0.23 in 1896
74.6 in 1999			...
...			28 0.95 in 2026
28 73.2 in 2026			
73.2 in 1944			

Normal Temperature for April at STLF1 = 71.4°

Normal Rainfall for April at STLF1 = 3.06 in.

TARPON SPRINGS (records began in January 1892):

Warmest Aprils	Coolest Aprils	Wettest Aprils	Driest Aprils
1 76.5 in 2015	1 65.7 in 1987	1 7.63 in 1931	1 0.00 in 1967
2 76.4 in 1947	2 67.1 in 1915	2 7.20 in 1942	2 Trace in 1896
3 76.0 in 1991	3 67.2 in 1962	3 6.97 in 1949	3 0.05 in 1922
4 75.3 in 1945	4 67.4 in 1950	4 6.66 in 1928	4 0.07 in 1981
5 75.1 in 1994	67.4 in 1940	5 6.31 in 1953	0.07 in 1972
6 75.0 in 2020	6 67.5 in 1903	6 6.01 in 1957	6 0.08 in 1923
7 74.9 in 2025	7 67.8 in 1916	7 6.00 in 2020	7 0.16 in 1998
74.9 in 1948	8 67.9 in 1971	8 5.97 in 1933	8 0.18 in 1903
9 74.8 in 1922	67.9 in 1961	9 5.90 in 1959	9 0.20 in 2017
74.8 in 1912	67.9 in 1910	10 5.70 in 1941	10 0.23 in 1910
...	
30 73.0 in 2026		89 1.19 in 2026	45 1.19 in 2026
73.0 in 1970			
73.0 in 1893			

Normal Temperature for April at TRPF1 = 72.2°
Normal Rainfall for April at TRPF1 = 2.69 in.

TAMPA AREA (records began in April 1890):

Warmest Aprils	Coolest Aprils	Wettest Aprils	Driest Aprils
1 78.0 in 2015	1 66.3 in 1987	1 10.71 in 1997	1 Trace in 1981
2 77.4 in 2025	2 66.7 in 1901	2 8.04 in 1920	Trace in 1967
3 77.1 in 2017	3 67.2 in 1993	3 7.23 in 1931	3 0.02 in 2001
4 77.0 in 2023	4 67.7 in 1950	4 6.76 in 2022	4 0.05 in 1969
5 76.9 in 2022	5 68.1 in 1903	5 6.73 in 2020	5 0.16 in 1922
6 76.8 in 1991	6 68.2 in 1899	6 6.59 in 1957	0.16 in 1898
7 76.6 in 1947	7 68.6 in 1983	7 6.14 in 1933	7 0.21 in 1963
8 76.4 in 1908	68.6 in 1961	8 5.75 in 1926	8 0.31 in 1892
9 76.3 in 2011	68.6 in 1915	9 5.48 in 1959	9 0.35 in 1938
76.3 in 2002	68.6 in 1891	10 5.38 in 1895	10 0.37 in 1946
11 76.0 in 1945			...
12 75.9 in 2029			26 0.68 in 2026

Normal Temperature for April at TPA = 73.9°
Normal Rainfall for April at TRA = 2.55 in.

ST. PETERSBURG (records began in August 1914):

Warmest Aprils	Coolest Aprils	Wettest Aprils	Driest Aprils
1 78.6 in 2015	1 68.5 in 1950	1 9.73 in 1997	1 0.00 in 1967
2 78.5 in 2026	2 68.7 in 1987	2 9.09 in 1920	2 Trace in 1981
3 77.2 in 2023	3 68.9 in 1993	3 8.45 in 1951	3 0.01 in 1974
4 77.0 in 2011	4 69.2 in 1952	4 7.69 in 1933	4 0.04 in 2001
77.0 in 1947	5 69.3 in 1983	5 7.39 in 1957	5 0.07 in 1987
6 76.9 in 2002	6 70.1 in 1916	6 7.20 in 2003	6 0.11 in 1998
7 76.6 in 2025	7 70.2 in 1915	7 6.16 in 1960	7 0.24 in 1932
76.6 in 1991	8 70.4 in 1951	8 6.09 in 1948	8 0.25 in 1977
9 76.5 in 2020	9 70.6 in 1931	9 5.81 in 1931	9 0.27 in 2006
76.5 in 2013	10 70.8 in 1996	10 5.46 in 1941	0.27 in 1963
	70.8 in 1961
		77 1.05 in 2026	36 1.05 in 2026

Normal Temperature for April at SPG = 74.1°

Normal Rainfall for April at SPG = 1.93 in.

PLANT CITY (Temperature records began in Sep 1892 and
Rainfall records began in Jan 1893):

Warmest Aprils	Coolest Aprils	Wettest Aprils	Driest Aprils
1 77.9 in 2023	1 65.0 in 1901	1 7.29 in 1931	1 0.00 in 2001
2 77.2 in 2020	2 65.5 in 1987	2 7.13 in 1957	0.00 in 1981
3 77.0 in 2025	3 65.9 in 1931	3 7.11 in 1933	0.00 in 1967
4 76.9 in 2015	4 67.4 in 1932	4 6.56 in 1928	4 0.16 in 1987
5 76.1 in 1947	5 67.6 in 1983	5 6.53 in 1941	5 0.20 in 1923
6 75.9 in 1912	67.6 in 1902	6 6.40 in 1937	0.20 in 1911
7 75.8 in 1911	7 67.7 in 2005	7 6.36 in 1947	7 0.21 in 2025
8 75.7 in 1945	8 67.9 in 1993	8 6.06 in 1997	8 0.26 in 1938
9 75.6 in 2011	9 68.0 in 1940	9 6.00 in 1951	9 0.27 in 1963
10 75.5 in 1991	10 68.2 in 1925	10 5.78 in 1959	10 0.31 in 1977
11 75.3 in 2017	
12 75.2 in 2019		94 1.07 in 2026	34 1.07 in 2026
13 75.0 in 2026			

Normal Temperature for April at PLCF1 = 73.5°

Normal Rainfall for April at PLCF1 = 2.88 in.

LAKELAND AREA (records began in January 1915):

Warmest Aprils	Coolest Aprils	Wettest Aprils	Driest Aprils
1 77.2 in 2015	1 67.3 in 1950	1 8.48 in 1959	1 0.00 in 1967
2 77.0 in 2023	2 68.3 in 2005	2 8.36 in 1939	2 0.04 in 2001
3 76.6 in 2020	68.3 in 1952	3 8.35 in 1934	3 0.05 in 1963
4 76.5 in 1991	4 68.5 in 1987	4 8.15 in 1951	4 0.09 in 1981
5 76.3 in 2025	5 68.6 in 1961	5 7.71 in 1928	5 0.22 in 2025
76.3 in 1994	68.6 in 1951	6 6.84 in 1997	0.22 in 1977
7 76.2 in 1922	7 68.7 in 2007	7 6.77 in 1957	7 0.25 in 1922
8 76.1 in 2011	8 68.9 in 1973	8 6.66 in 1920	8 0.42 in 1972
9 75.8 in 1947	9 69.0 in 1983	9 5.82 in 1926	0.42 in 1969
10 75.6 in 1945	10 69.5 in 1931	10 5.60 in 1941	10 0.43 in 1932
11 75.5 in 2026	69.5 in 1915
		73 1.40 in 2026	40 1.40 in 2026

Normal Temperature for April at LLDF1 = 73.2°

Normal Rainfall for April at LLDF1 = 2.82 in.

WINTER HAVEN AREA (records began in March 1941):

Warmest Aprils	Coolest Aprils	Wettest Aprils	Driest Aprils
1 78.6 in 2015	1 67.0 in 1987	1 7.36 in 1951	1 0.00 in 1981
2 77.8 in 1947	2 68.5 in 1983	2 7.29 in 1941	0.00 in 1967
3 77.5 in 1991	68.5 in 1973	3 6.51 in 2008	3 0.18 in 1963
4 77.1 in 1945	4 69.0 in 1961	4 6.34 in 1957	4 0.28 in 1946
5 76.6 in 2002	5 69.1 in 1971	5 5.55 in 1947	5 0.46 in 1952
6 76.3 in 2011	6 69.7 in 2005	6 5.30 in 1960	6 0.51 in 2017
7 76.2 in 2023	69.7 in 1962	7 5.11 in 1997	7 0.56 in 2001
8 76.1 in 2025	8 69.9 in 1993	8 5.01 in 1959	8 0.61 in 1978
9 76.0 in 2020	9 70.0 in 1951	9 4.42 in 2018	9 0.62 in 1968
10 75.8 in 1994	10 70.1 in 2004	4.42 in 1991	10 0.64 in 1986
...		...	
18 74.7 in 2026		22 3.10 in 2026	
74.7 in 2013			

Normal Temperature for April at GIF = 73.8°

Normal Rainfall for April at GIF = 2.50 in.

BARTOW (records began in June 1892):

Warmest Aprils	Coolest Aprils	Wettest Aprils	Driest Aprils
1 78.7 in 1908	1 65.9 in 1926	1 9.70 in 1920	1 0.00 in 1967
2 77.2 in 1945	2 66.3 in 1901	2 8.40 in 1951	2 Trace in 2000
3 76.1 in 1991	3 66.9 in 1915	3 6.89 in 1941	Trace in 1907
4 76.0 in 1999	4 67.3 in 1928	4 6.69 in 1934	4 0.04 in 1922
76.0 in 1947	5 68.0 in 1913	5 6.43 in 1937	5 0.11 in 1981
76.0 in 1922	6 68.1 in 1987	6 6.14 in 1935	6 0.17 in 1938
7 75.9 in 2023	7 68.4 in 1950	7 6.12 in 1954	7 0.20 in 1987
75.9 in 2014	68.4 in 1931	6.12 in 1895	8 0.21 in 2006
9 75.7 in 1965	9 68.8 in 1952	9 5.94 in 1933	9 0.28 in 2001
10 75.6 in 2002	10 68.9 in 1937	10 5.87 in 1991	10 0.31 in 2025
75.6 in 1954		...	
...	...	27 4.34 in 2026	
48 73.0 in 2026	73 73.0 in 2026		

Normal Temperature for April at BARF1 = 72.5°

Normal Rainfall for April at BARF1 = 2.72 in.

SARASOTA-BRADENTON AREA (records began in January 1911):

Warmest Aprils	Coolest Aprils	Wettest Aprils	Driest Aprils
1 76.2 in 2023	1 65.9 in 1987	1 10.23 in 1957	1 0.00 in 1967
2 75.9 in 2015	2 67.0 in 1916	2 9.82 in 1920	2 Trace in 2017
75.9 in 1945	3 67.1 in 1915	3 8.78 in 1997	3 0.01 in 1923
4 75.8 in 2026	4 67.5 in 1931	4 7.36 in 2020	4 0.03 in 1981
5 75.4 in 2025	5 67.8 in 1986	5 7.22 in 1933	5 0.08 in 1963
6 75.2 in 2020	6 68.3 in 2005	6 7.09 in 1951	6 0.10 in 1998
7 75.1 in 1994	68.3 in 1950	7 5.55 in 1930	7 0.10 in 1922
8 75.0 in 2017	8 68.4 in 1993	8 5.11 in 1953	8 0.14 in 2006
9 74.9 in 1947	9 68.5 in 1971	9 4.87 in 1916	0.14 in 2001
10 74.6 in 2002	68.5 in 1940	10 4.85 in 1960	10 0.15 in 1938
	
		60 1.67 in 2026	57 1.67 in 2026

Normal Temperature for April at SRQ = 72.6°

Normal Rainfall for April at SRQ = 2.46 in.

VENICE (records began in May 1955):

Warmest Aprils	Coolest Aprils	Wettest Aprils	Driest Aprils
1 76.9 in 2015	1 65.5 in 1987	1 13.85 in 1957	1 0.00 in 1967
2 76.6 in 2023	2 68.0 in 1986	2 7.86 in 1997	2 0.06 in 1975
3 76.2 in 2011	3 68.5 in 1993	3 6.10 in 1962	3 0.07 in 1987
4 76.1 in 1994	4 68.6 in 2005	4 5.20 in 1993	0.07 in 1978
5 75.9 in 2013	5 68.8 in 1983	5 5.18 in 1984	5 0.09 in 1963
6 75.5 in 2002	68.8 in 1962	6 5.09 in 1991	6 0.15 in 2006
7 75.0 in 2025	7 69.0 in 1988	7 4.51 in 2013	7 0.16 in 2001
75.0 in 2020	8 69.3 in 1984	4.51 in 1982	8 0.17 in 1970
9 74.5 in 2017	9 69.4 in 2007	9 4.12 in 1966	9 0.18 in 1999
74.5 in 1999	10 69.6 in 1956	10 4.01 in 2004	10 0.24 in 1972
11 74.4 in 2012	
12 74.3 in 2026		45 1.22 in 2026	28 1.22 in 2026
74.3 in 2019			

Normal Temperature for April at VNCF1 = 72.5°

Normal Rainfall for April at VNCF1 = 2.47 in.

MYAKKA RIVER STATE PARK (Temperature records began in March 1956
and Rainfall records began in Sep 1943):

Warmest Aprils	Coolest Aprils	Wettest Aprils	Driest Aprils
1 77.0 in 2015	1 66.5 in 1987	1 8.93 in 1997	1 0.00 in 2001
2 76.0 in 1999	2 67.8 in 1962	2 7.85 in 1993	2 Trace in 1981
3 75.7 in 1994	3 68.0 in 1961	3 7.10 in 1954	3 0.02 in 1987
4 74.9 in 2023	4 68.3 in 2005	4 7.02 in 1948	4 0.04 in 1946
5 74.8 in 1982	5 68.4 in 1986	5 6.82 in 1957	5 0.10 in 2006
6 74.7 in 2013	6 68.7 in 1973	6 6.54 in 2020	6 0.12 in 1970
74.7 in 2011	7 69.2 in 2004	7 6.22 in 1951	7 0.15 in 1978
74.7 in 1981	8 69.3 in 1971	8 5.58 in 1995	8 0.20 in 1998
9 74.4 in 2002	9 69.7 in 1983	9 5.17 in 2008	9 0.33 in 1971
74.4 in 1970	10 69.8 in 2024	10 5.05 in 1982	10 0.43 in 1950

Average Temperature for April 2026 = Not Available Yet

Normal Temperature for April at MKCF1 = 72.5°

Total Rainfall for April 2026 = Not Available Yet

Normal Rainfall for April at MKCF1 = 2.98 in.

WAUCHULA (records began in January 1933):

Warmest Aprils	Coolest Aprils	Wettest Aprils	Driest Aprils
1 77.2 in 1945	1 65.7 in 1950	1 8.26 in 1951	1 0.00 in 2001
2 76.3 in 1947	2 66.7 in 1993	2 7.75 in 1947	0.00 in 1978
3 75.6 in 2023	66.7 in 1987	3 6.94 in 1962	0.00 in 1967
4 75.4 in 2015	4 66.8 in 2004	4 6.60 in 1995	4 0.03 in 1963
5 74.8 in 1968	5 67.6 in 1983	5 6.55 in 1953	5 0.05 in 1971
6 74.7 in 1991	6 67.9 in 1952	6 6.44 in 1992	6 0.08 in 1981
7 74.5 in 1970	7 68.1 in 1951	7 6.36 in 1934	7 0.13 in 1970
8 74.4 in 1975	8 68.3 in 2000	8 6.16 in 2021	8 0.16 in 1987
9 74.2 in 1965	9 68.5 in 2007	9 5.95 in 1997	9 0.22 in 1945
10 74.1 in 2020	68.5 in 1997	10 5.44 in 1933	10 0.23 in 1975
74.1 in 1982	
74.1 in 1939		33 2.93 in 2026	59 2.93 in 2026
...	...		
37 72.3 in 2026	52 72.3 in 2026		

Normal Temperature for April at WAUF1 = 71.0°

Normal Rainfall for April at WAUF1 = 2.92 in.

ARCHBOLD BIO STN (records began in January 1969):

Warmest Aprils	Coolest Aprils	Wettest Aprils	Driest Aprils
1 76.6 in 2015	1 63.0 in 1987	1 9.53 in 2021	1 0.03 in 2006
2 75.0 in 2023	2 66.4 in 1986	2 5.90 in 1972	2 0.08 in 1971
75.0 in 2020	3 66.7 in 2004	3 5.65 in 2015	3 0.16 in 1981
4 74.8 in 1991	4 66.9 in 1993	4 5.64 in 2023	4 0.19 in 1970
5 74.4 in 2011	5 67.4 in 2005	5 5.47 in 1997	5 0.21 in 1986
6 74.1 in 1994	67.4 in 1983	6 5.37 in 2013	6 0.35 in 2025
7 73.7 in 1982	7 67.7 in 2000	7 4.91 in 1992	7 0.42 in 2016
8 73.5 in 1975	8 68.6 in 1971	8 4.90 in 1973	8 0.43 in 1978
9 73.4 in 2013	9 68.7 in 1992	9 4.15 in 1982	9 0.52 in 1987
10 73.1 in 2017	10 68.8 in 2007	10 4.10 in 2004	10 0.59 in 2009
...	68.8 in 1984	...	
17 72.5 in 2026		22 2.57 in 2026	
72.5 in 1995		2.57 in 2003	

Normal Temperature for April at ACHF1 = 71.7°

Normal Rainfall for April at ACHF1 = 2.54 in.

PUNTA GORDA AREA (records began in May 1914):

Warmest Aprils	Coolest Aprils	Wettest Aprils	Driest Aprils
1 78.7 in 1945	1 67.9 in 1987	1 8.70 in 1920	1 0.00 in 1981
2 78.2 in 1947	2 68.7 in 1915	2 7.93 in 1957	0.00 in 1963
3 76.9 in 1944	3 69.1 in 2004	3 7.08 in 1931	0.00 in 1946
4 76.6 in 2023	69.1 in 1916	4 6.07 in 2023	4 Trace in 1975
76.6 in 2015	5 69.2 in 2005	5 5.80 in 1994	Trace in 1967
76.6 in 1994	6 69.7 in 1971	6 5.52 in 1941	6 0.03 in 1922
7 76.1 in 1954	7 70.0 in 1993	7 5.36 in 1947	7 0.05 in 2006
8 76.0 in 1991	70.0 in 1986	8 5.20 in 1933	8 0.09 in 1970
76.0 in 1946	9 70.1 in 2000	9 5.15 in 1997	9 0.10 in 2001
10 75.9 in 1948	10 70.2 in 1950	10 5.08 in 1965	10 0.11 in 1987
...		5.08 in 1948	
27 74.2 in 2026	
74.2 in 2017		37 2.57 in 2026	72 2.57 in 2026
74.2 in 1981			
74.2 in 1955			

Normal Temperature for April at PGD = 73.1°

Normal Rainfall for April at PGD = 2.23 in.

FORT MYERS AREA (records began in January 1902):

Warmest Aprils	Coolest Aprils	Wettest Aprils	Driest Aprils
1 79.2 in 2020	1 68.5 in 1950	1 8.42 in 1939	1 Trace in 1970
2 79.0 in 2023	2 68.8 in 1987	2 7.66 in 1941	Trace in 1967
3 78.8 in 2015	3 69.3 in 1915	3 6.06 in 1933	Trace in 1903
4 77.7 in 2022	4 69.6 in 1903	4 5.89 in 1930	4 0.01 in 2006
77.7 in 2011	5 70.1 in 1983	5 5.83 in 2022	0.01 in 1946
77.7 in 1991	70.1 in 1910	6 5.68 in 1994	6 0.02 in 1922
77.7 in 1947	7 70.2 in 1952	7 5.61 in 1916	7 0.08 in 1981
8 77.4 in 1994	8 70.4 in 1971	8 5.50 in 1949	0.08 in 1950
9 77.3 in 1908	9 70.6 in 1931	9 5.34 in 1995	9 0.11 in 1974
10 76.9 in 2025	10 70.8 in 2005	10 5.01 in 1991	10 0.14 in 1987
76.9 in 2018	70.8 in 1993
76.9 in 2013	70.8 in 1961	54 1.83 in 2026	72 1.83 in 2026
76.9 in 2002	70.8 in 1907		
76.9 in 1945	70.8 in 1902		
15 76.6 in 2017			
16 76.5 in 1982			
17 76.4 in 2026			

Normal Temperature for April at FMY = 74.8°

Normal Rainfall for April at FMY = 2.44 in.

For more Climate information visit our web site at the following link:
<https://www.weather.gov/tampabay> and then go to the Climate and Past
Weather drop down menu above the graphical forecast images.