



NOAA - National Weather Service

Tampa Bay Area

2525 14th Avenue SE, Ruskin, Florida 33570

813-645-2323 <https://weather.gov/tampabay>

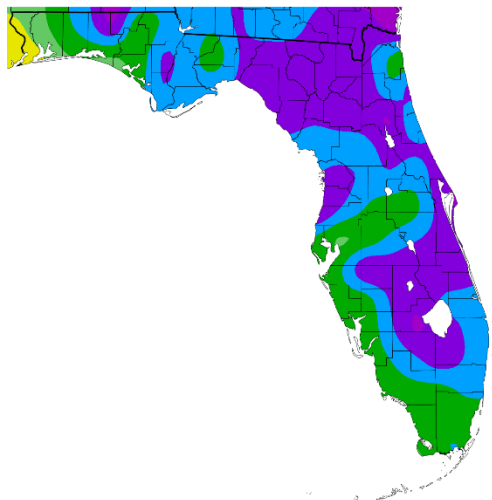
August and Summer 2023 Climate Summary for West Central and Southwest Florida

For August and for the Summer (June/July/August) temperatures across West Central and Southwest Florida mostly ranged from about 1.5 to 4 degrees above normal, with several sites ending up in the Top Three Warmest for August, the Summer (June/July/August), and Warmest Month overall.

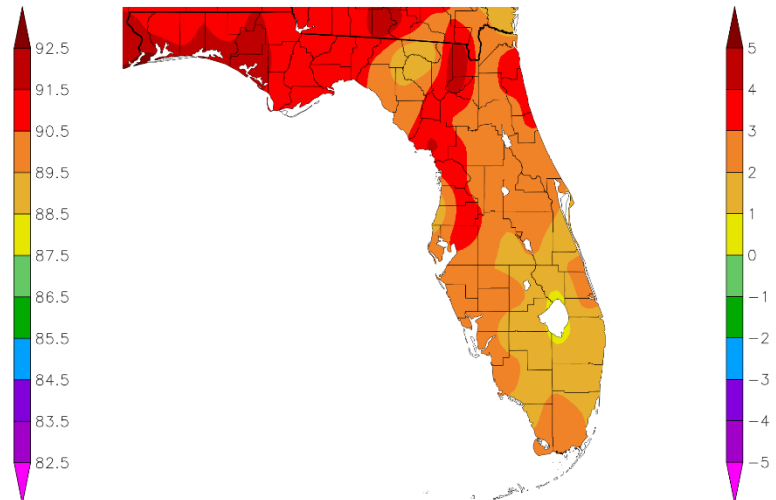
AUGUST TEMPERATURE RANKINGS (°F) :

Location	August 2023 Ranking	Avg Temp	Normal Aug Temp	Dep fm Normal	Records Began
Plant City	1st Warmest	87.8°	83.6°	+4.2°	Sep 1892
Tampa Area	1st Warmest	86.9°	84.0°	+2.9°	Apr 1890
St Petersburg Area	2nd Warmest	86.8°	84.0°	+2.8°	Aug 1914
Punta Gorda Area	1st Warmest	86.3°	83.5°	+2.8°	May 1914
Venice	1st Warmest	86.1°	83.1°	+3.0°	May 1955
Lakeland Area	1st Warmest	86.0°	83.3°	+2.7°	Jan 1915
Fort Myers Area	1st Warmest	85.9°	83.4°	+2.5°	Jan 1902
Sarasota-Bradenton Area	1st Warmest	85.9°	83.4°	+2.5°	Jan 1911
Winter Haven Area	2nd Warmest	85.5°	84.1°	+1.4°	Mar 1941
Brooksville Area	1st Warmest	84.6°	81.5°	+3.1°	Jan 1892
Bartow	3rd Warmest (tie)	84.6°	82.3°	+2.3°	Jun 1892
Chiefland 5 ESE	1st Warmest	84.5°	80.8°	+3.7°	Jul 1956
St. Leo	3rd Warmest	84.2°	81.4°	+2.8°	Apr 1895
Archbold Bio Stn	1st Warmest	83.9°	82.1°	+1.8°	Jan 1969
Myakka River State Pk	12th Warmest (tie)	83.6°	83.1°	+0.5°	Mar 1956

Temperature (F)
8/1/2023 - 8/31/2023



Departure from Normal Temperature (F)
8/1/2023 - 8/31/2023

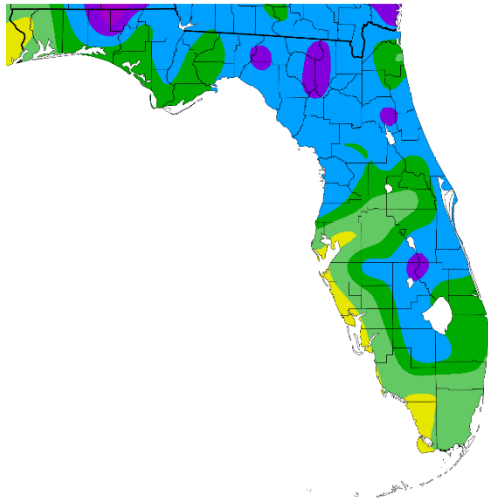


Graphics Source: NOAA Regional Climate Centers

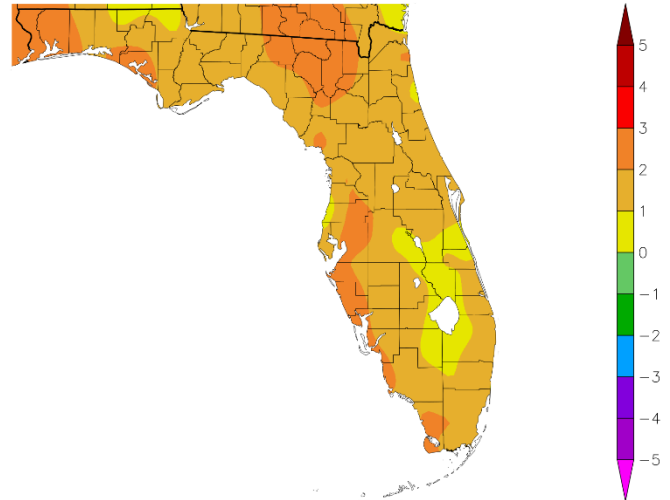
SUMMER TEMPERATURE RANKINGS (°F) :

Location	Summer 2023 Ranking	Avg Temp	Normal Sum Temp	Dep fm Normal	Records Began
Plant City	1st Warmest	86.5°	83.2°	+3.3°	Sep 1892
Tampa Area	2nd Warmest	85.6°	83.6°	+2.0°	Apr 1890
Fort Myers Area	2nd Warmest	85.2°	83.0°	+2.2°	Jan 1902
Venice	2nd Warmest	85.2°	82.5°	+2.7°	May 1955
St Petersburg Area	3rd Warmest	85.1°	83.5°	+1.6°	Aug 1914
Sarasota-Bradenton Area	1st Warmest	85.0°	82.8°	+2.2°	Jan 1911
Punta Gorda Area	1st Warmest	84.7°	82.8°	+1.9°	May 1914
Lakeland Area	1st Warmest (tie)	84.6°	82.8°	+1.8°	Jan 1915
Winter Haven Area	8th Warmest	84.0°	83.8°	+0.2°	Mar 1941
Bartow	6th Warmest	83.5°	81.9°	+1.6°	Jun 1892
Brooksville Area	2nd Warmest	83.0°	80.9°	+2.1°	Jan 1892
St. Leo	8th Warmest (tie)	82.8°	81.0°	+1.8°	Apr 1895
Archbold Bio Stn	3rd Warmest	82.6°	81.4°	+1.2°	Jan 1969
Myakka River State Pk	14th Warmest	82.5°	82.3°	+0.2°	Mar 1956
Chiefland 5 ESE	4th Warmest	82.4°	80.2°	+2.2°	Jul 1956

Temperature (F)
6/1/2023 – 8/31/2023



Departure from Normal Temperature (F)
6/1/2023 – 8/31/2023



Graphics Source: NOAA Regional Climate Centers

The table below list how August 2023 ranked versus any other month since records began at each location. Several sites set new records, some of which were just set last month in July, for the Warmest Month since records began.

WARMEST MONTH TEMPERATURE RANKINGS (°F) :

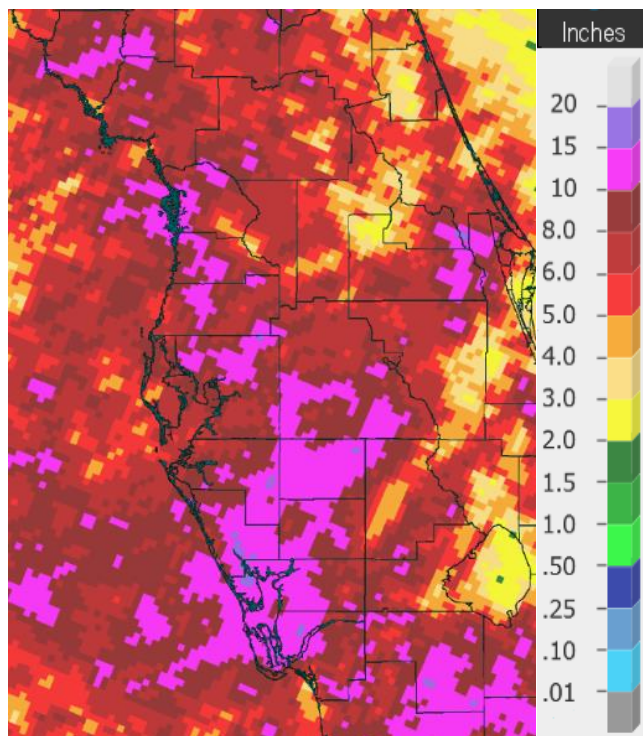
Location	August 2023 Ranking	August 2023 Avg Temp	Previous Record Month and Year	Records Began
Plant City	1st Warmest	87.8°	87.6° in Jul 2023	Sep 1892
Tampa Area	1st Warmest	86.9°	86.5° in Jul 2023	Apr 1890
St Petersburg Area	2nd Warmest	86.8°	87.5° in Aug 2005	Aug 1914
Punta Gorda Area	1st Warmest	86.3°	85.8° in Jul 2023	May 1914
Venice	6th Warmest	86.1°	88.1° in Sep 1988	May 1955
Lakeland Area	1st Warmest	86.0°	85.5° in Jul 2023	Jan 1915
Sarasota-Bradenton Area	2nd Warmest	85.9°	86.2° in Jul 2023	Jan 1911
Fort Myers Area	2nd Warmest (tie)	85.9°	86.1° in Jul 2023	Jan 1902
Winter Haven Area	3rd Warmest (tie)	85.5°	85.6° in Jul 2022*	Mar 1941
Brooksville Area	1st Warmest	84.6°	84.2° in Jun 1927	Jan 1892
Bartow	7th Warmest (tie)	84.6°	87.4° in Aug 2014	Jun 1892
Chiefland 5 ESE	1st Warmest	84.5°	83.8° in Jul 2016	Jul 1956
St. Leo	6th Warmest	84.2°	86.4° in Jun 1998	Apr 1895
Archbold Bio Stn	1st Warmest	83.9°	83.6° in Aug 2016	Jan 1969
Myakka River State Pk	21st Warmest (tie)	83.6°	86.7° in Aug 1993	Mar 1956

**Last of Multiple Occurrences*

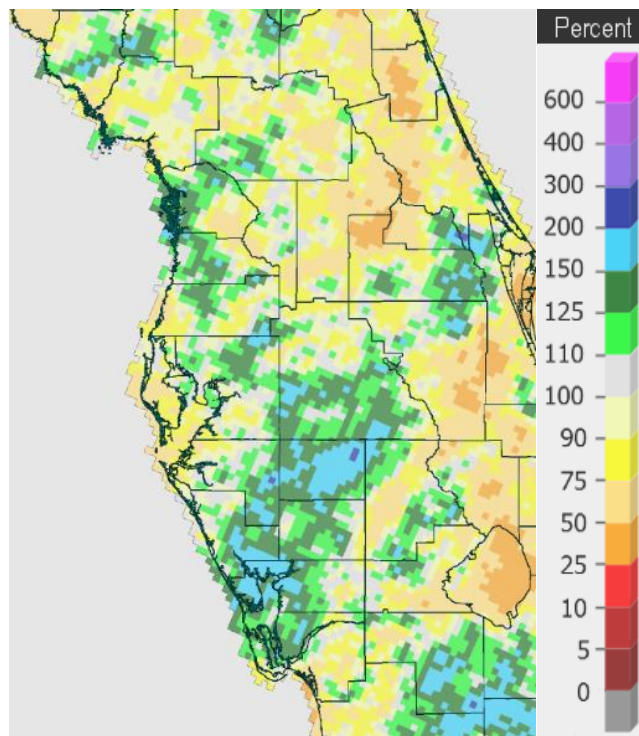
As for rainfall it was rather variable across the region with amounts ranging from 6 to 15 inches in August, while summer (June/July/August) totals ranged from less than 13 inches to over 34 inches. The drought conditions persisted through the summer near the coast from around Tampa Bay southward thanks in large part to numerous days with southwest to west flow that took most of the shower and thunderstorm activity well inland.

AUGUST RAINFALL RANKINGS (inches):

Location	August Rank	2023 Rain Total	Normal Aug Rain	Dep fm Normal	Records Began
Myakka River State Pk	10th Wettest	14.68	10.12	+4.56	Sep 1943
Archbold Bio Stn	8th Wettest	11.55	8.49	+3.06	Jan 1969
Bartow	20th Wettest	11.28	7.78	+3.50	Jun 1892
Punta Gorda Area	12th Wettest	10.91	9.11	+1.80	May 1914
Wauchula 2 N	11th Wettest	10.88	8.46	+2.42	Jan 1933
Tampa Area	34th Wettest	9.97	9.03	+0.94	Apr 1890
Plant City	44th Wettest	9.78	8.85	+0.93	Feb 1893
Fort Myers Area	79th Driest	9.69	10.43	-0.74	Jan 1902
Sarasota-Bradenton Area	44th Wettest	9.12	9.11	+0.01	Jan 1911
Brooksville Area	51st Wettest	9.04	8.12	+0.92	Jan 1892
Winter Haven Area	21st Wettest	9.00	6.52	+2.48	Mar 1941
Lakeland Area	37th Driest	6.53	9.08	-2.55	Jan 1915
St. Petersburg Area	36th Driest	6.21	8.39	-2.18	Aug 1914
Venice	24th Driest	5.98	8.34	-2.36	May 1955
St. Leo	33rd Driest	5.87	8.28	-2.41	Apr 1895
Inverness 3 SE	14th Driest	5.51	8.69	-3.18	Jul 1948
Chiefland 5 ESE	3rd Driest	3.84	9.87	-6.03	Jul 1956



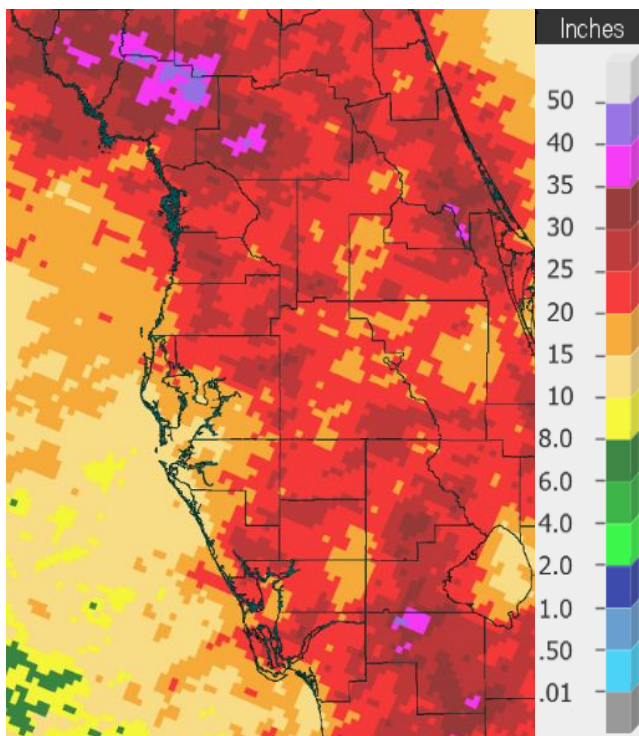
August 2023 Rainfall



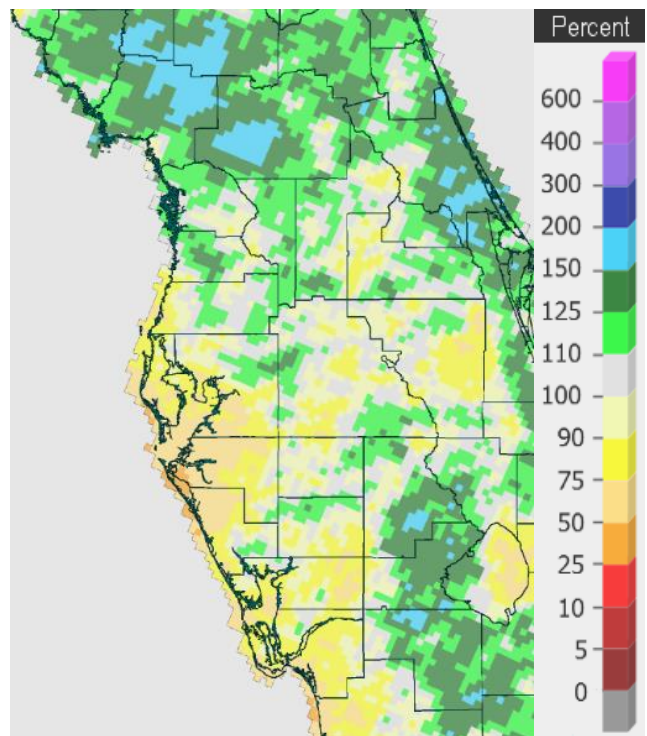
August 2023 Percent of Normal

SUMMER RAINFALL RANKINGS (inches):

Location	Summer Rank	2023 Rain	Total	Normal Sum Rain	Dep fm Normal	Records Began
Archbold Bio Stn	4th Wettest		34.39	25.68	+8.71	Jan 1969
Myakka River State Pk	20th Wettest		32.60	29.88	+2.72	Sep 1943
Plant City	24th Wettest		31.59	27.21	+4.38	Feb 1893
Brooksville Area	39th Wettest		28.19	25.44	+2.75	Jan 1892
Lakeland Area	24th Wettest		27.86	26.62	+1.24	Jan 1915
Chiefland 5 ESE	27rd Driest		25.64	26.22	-0.58	Jul 1956
Winter Haven Area	24th Wettest		24.87	21.32	+3.55	Mar 1941
Inverness 3 SE	34th Driest		23.55	24.62	-1.07	Jul 1948
Bartow	63rd Driest		23.34	23.62	-0.28	Jun 1892
St. Leo	45th Driest		21.82	24.72	-2.90	Apr 1895
Punta Gorda Area	46th Driest		21.56	26.41	-4.85	May 1914
Wauchula 2 N	22nd Driest		19.89	24.61	-5.02	Jan 1933
St. Petersburg Area	27th Driest		17.31	22.67	-5.36	Aug 1914
Tampa Area	24th Driest		17.01	24.15	-7.14	Apr 1890
Venice	18th Driest		15.77	23.54	-7.77	May 1955
Sarasota-Bradenton Area	5th Driest		12.60	23.55	-10.95	Jan 1911



Total Rainfall
June 1 - August 31, 2023



Percent of Normal
June 1 - August 31, 2023

On the following pages are tables of the Top Ten Warmest, Coolest, Wettest, and Driest August's and Summers at some official NWS locations, which includes the average/total for this August and Summer where available, as well as the 1991-2020 Normal (average) temperature and rainfall for these time periods. Also included are tables listing the Top Ten Warmest Average Monthly Temperatures, Warmest Monthly Average Maximum Temperatures, and the Warmest Monthly Average Minimum Temperatures.

CHIEFLAND 5 ESE (records began in July 1956):

Warmest August's	Coolest August's	Wettest August's	Driest August's
1 84.5 in 2023	1 78.3 in 1969	1 20.44 in 1971	1 3.17 in 1980
2 83.4 in 1980	2 78.9 in 1967	2 17.10 in 1986	2 3.71 in 1973
3 82.9 in 2020	3 79.0 in 1994	3 16.59 in 1985	3 3.84 in 2023
4 82.9 in 2018	4 79.3 in 2008	4 16.44 in 2015	4 3.97 in 2000
5 82.8 in 1999	5 79.4 in 1996	5 14.61 in 1988	5 4.06 in 1956
6 82.7 in 2022	6 79.5 in 2003	6 14.55 in 1961	6 5.28 in 2014
82.7 in 2016	79.5 in 2002	7 14.43 in 1979	7 5.36 in 2009
8 82.6 in 2015	79.5 in 1979	8 14.33 in 2010	8 5.50 in 1963
9 82.5 in 2011	9 79.7 in 2004	14.33 in 1966	9 5.51 in 1976
82.5 in 1987	79.7 in 1966	10 14.23 in 1968	10 5.72 in 1987

Normal August Temp at CHIF1 = 80.8°
 Normal August Rain at CHIF1 = 9.87 in.

Warmest Summers	Coolest Summers	Wettest Summers	Driest Summers
1 82.9 in 2016	1 79.0 in 1965	1 37.95 in 2012	1 15.28 in 1973
2 82.6 in 1998	2 79.1 in 1974	2 36.55 in 2019	2 15.58 in 2014
3 82.5 in 2015	79.1 in 1966	3 36.38 in 2001	3 18.48 in 1969
4 82.4 in 2023	4 79.2 in 1969	4 35.41 in 1965	4 18.49 in 1972
5 82.3 in 2022	5 79.4 in 2008	5 34.90 in 2018	5 18.54 in 2006
6 82.0 in 2018	79.4 in 2002	6 34.89 in 1964	6 18.76 in 1998
7 81.9 in 2017	79.4 in 1994	7 34.88 in 2003	7 19.05 in 2011
8 81.8 in 2020	79.4 in 1972	8 34.30 in 2013	8 19.17 in 1977
9 81.7 in 2011	9 79.5 in 1979	9 34.21 in 1974	9 19.48 in 1993
10 81.6 in 1999	79.5 in 1963	10 33.23 in 1988	10 19.57 in 2007
	
		33 25.64 in 2023	27 25.64 in 2023

Normal Summer Temp at CHIF1 = 80.2°
 Normal Summer Rain at CHIF1 = 26.22 in.

Warmest Monthly Avg Temp	Warmest Monthly Avg Max Temps	Warmest Monthly Avg Min Temps
1 84.5 in Aug 2023	1 95.4 in Jun 1989	1 74.9 in Aug 2021
2 83.8 in Jul 2016	2 94.6 in Jul 1983	2 74.5 in Aug 2023
3 83.5 in Jul 2023	94.6 in Jun 1977	3 74.4 in Aug 2015
4 83.4 in Aug 1980	4 94.5 in Aug 2023	4 74.3 in Aug 2019
5 83.2 in Sep 2018	94.5 in Jun 1998	5 74.2 in Jul 2023
6 83.1 in Jul 1983	94.5 in Jul 1981	6 73.9 in Aug 2020
7 83.0 in Jul 1998	7 94.3 in Aug 1980	73.9 in Sep 2018
83.0 in Jul 1987	8 94.2 in Jul 1987	73.9 in Aug 2018
9 82.9 in Aug 2020	9 94.1 in Jun 1985	9 73.8 in Aug 2016
82.9 in Aug 2018	10 94.0 in Jul 2016	73.8 in Aug 2010
		73.8 in Aug 1999
		73.8 in Jul 1988

INVERNESS 3 SE (records began in July 1948):

Warmest August's	Coollest August's	Wettest August's	Driest August's
1 84.4 in 2011	1 78.1 in 1994	1 16.70 in 1949	1 1.77 in 1963
2 84.0 in 2010	2 78.5 in 2004	2 16.58 in 2008	2 2.43 in 1993
3 83.7 in 1954	3 79.8 in 1997	3 16.19 in 1961	3 3.08 in 2013
4 83.4 in 1956	4 79.9 in 1976	4 15.87 in 1953	4 3.27 in 1999
5 83.3 in 2022	5 80.0 in 1992	5 15.03 in 1992	5 3.86 in 1989
83.3 in 2016	6 80.2 in 2003	6 13.35 in 1985	6 3.88 in 1997
7 83.2 in 2020	7 80.4 in 2002	7 13.15 in 1970	7 4.18 in 2014
83.2 in 1955	80.4 in 1996	8 12.97 in 1965	8 4.48 in 1987
9 83.0 in 1983	9 80.7 in 1986	9 12.63 in 2019	9 4.50 in 1973
83.0 in 1963	80.7 in 1949	10 12.43 in 1968	10 4.57 in 2001
	80.7 in 1948		11 4.63 in 1984
			12 4.70 in 1955
			13 5.03 in 2018
			14 5.51 in 2023

Average Temperature for August 2023 = Unavailable, equipment failure
Normal August Temp at INVf1 = 80.7°
Normal August Rain at INVf1 = 8.69 in.

Warmest Summers	Coollest Summers	Wettest Summers	Driest Summers
1 83.9 in 2010	1 78.4 in 1994	1 37.83 in 1965	1 14.38 in 1993
2 83.4 in 2016	2 79.6 in 2003	2 36.34 in 2003	2 14.48 in 1952
3 83.2 in 2022	79.6 in 1995	3 35.38 in 1985	3 14.73 in 1998
83.2 in 2011	4 79.9 in 1997	4 35.23 in 1949	4 15.10 in 1997
5 83.0 in 1998	5 80.0 in 2004	5 35.17 in 1953	5 16.47 in 1979
6 82.9 in 2020	6 80.1 in 2018	6 34.33 in 1960	6 17.02 in 1999
82.9 in 2019	7 80.2 in 1991	7 34.30 in 1982	7 17.32 in 1987
8 82.6 in 1981	8 80.3 in 2001	8 34.06 in 2002	8 17.39 in 1972
82.6 in 1969	80.3 in 1996	9 33.99 in 2012	9 17.84 in 2006
82.6 in 1954	80.3 in 1986	10 32.74 in 2008	10 17.96 in 1956
82.6 in 1952	
		34 23.55 in 2023	34 23.55 in 2023

Average Temperature for Summer 2023 = August Data Unavailable
Normal Summer Temp at INVF1 = 80.4°
Normal Summer Rain at INVF1 = 24.62 in.

Warmest Monthly Avg Temp	Warmest Monthly Avg Max Temps	Warmest Monthly Avg Min Temps
1 84.6 in Jul 2016	1 96.8 in Jul 2016	1 75.1 in Jul 2023
2 84.4 in Aug 2011	2 95.9 in Jun 1998	2 74.5 in Aug 2021
3 84.2 in Jul 2023	3 95.8 in Jun 2010	74.5 in Aug 2010
4 84.0 in Aug 2010	4 95.7 in Jun 2011	4 74.3 in Aug 2019
84.0 in Jul 2010	5 95.1 in Jun 2015	74.3 in Aug 2011
6 83.8 in Jul 1969	95.1 in Jun 1981	6 74.2 in Aug 2020
7 83.7 in Aug 1954	7 95.0 in Aug 1956	7 74.1 in Jul 1969
8 83.6 in Jun 1981	8 94.7 in Jul 2010	8 74.0 in Jul 2022
9 83.5 in Jul 2020	94.7 in Jun 1950	74.0 in Aug 1983
83.5 in Jun 2010	10 94.5 in Jun 1977	10 73.8 in Jul 2020
83.5 in Jul 1979	94.5 in Aug 1955	

Average Temperature for August 2023 = August Data Unavailable
Average Max Temperature for August 2023 = August Data Unavailable
Average Min Temperature for August 2023 = August Data Unavailable

BROOKSVILLE AREA (records began in January 1892):

Warmest August's	Coollest August's	Wettest August's	Driest August's
1 84.6 in 2023	1 79.1 in 1922	1 23.95 in 1949	1 2.61 in 1955
2 83.9 in 1926	79.1 in 1894	2 20.91 in 1945	2 2.65 in 1958
3 83.8 in 2011	3 79.2 in 1994	3 17.47 in 1905	3 2.68 in 2002
4 83.5 in 2017	4 79.3 in 1932	4 17.13 in 1928	4 2.76 in 1963
5 83.2 in 1928	79.3 in 1892	5 16.34 in 1901	5 3.45 in 1919
6 83.1 in 1927	6 79.5 in 1949	6 14.84 in 1965	6 3.68 in 2009
7 83.0 in 2022	79.5 in 1920	14.84 in 1957	7 3.76 in 1916
8 82.9 in 2013	79.5 in 1898	8 14.19 in 1995	8 3.88 in 1951
82.9 in 1963	9 79.6 in 1904	9 13.74 in 1910	9 4.12 in 1976
82.9 in 1941	10 79.7 in 1901	10 13.68 in 1939	10 4.15 in 1997
82.9 in 1933	
		51 9.04 in 2023	80 9.04 in 2023

Normal August Temp at BKV = 81.5°
 Normal August Rain at BKV = 8.12 in.

Warmest Summers	Coollest Summers	Wettest Summers	Driest Summers
1 83.6 in 1927	1 78.4 in 1894	1 57.08 in 1945	1 13.03 in 1996
2 83.0 in 2023	2 78.8 in 1920	2 41.37 in 2003	2 13.05 in 1997
3 82.6 in 2011	3 79.0 in 1922	3 41.33 in 1949	3 14.06 in 1979
4 82.5 in 2022	4 79.1 in 1921	4 39.60 in 1943	4 14.34 in 1958
5 82.4 in 1928	5 79.3 in 1904	5 38.64 in 1928	5 14.97 in 1931
6 82.3 in 2017	6 79.4 in 1947	6 38.55 in 1906	6 14.99 in 1954
82.3 in 1981	79.4 in 1946	7 37.96 in 2013	7 15.06 in 1902
8 82.2 in 2019	8 79.5 in 1965	8 37.46 in 1905	8 15.56 in 1973
82.2 in 2010	79.5 in 1949	9 36.81 in 2012	9 15.84 in 1955
82.2 in 1998	79.5 in 1919	10 34.93 in 2015	10 15.90 in 1916
	
		39 28.19 in 2023	92 28.19 in 2023

Normal Summer Temp at BKV = 80.9°
 Normal Summer Rain at BKV = 25.44 in

Warmest Monthly Avg Temp	Warmest Monthly Avg Max Temps	Warmest Monthly Avg Min Temps
1 84.6 in Aug 2023	1 97.0 in Jun 1927	1 75.1 in Aug 2011
2 84.2 in Jun 1927	2 95.5 in Jul 1930	2 74.9 in Aug 1941
3 83.9 in Aug 1926	3 95.2 in Jul 1931	3 74.8 in Aug 1899
4 83.8 in Jul 2023	95.2 in Jul 1927	4 74.6 in Aug 1995
83.8 in Aug 2011	5 95.1 in May 1927	5 74.5 in Aug 2023
6 83.6 in Jul 1930	6 94.9 in Aug 1926	6 74.4 in Jul 1942
83.6 in Jul 1927	7 94.8 in Aug 2023	7 74.3 in Aug 2017
8 83.5 in Aug 2017	94.8 in Jun 1998	8 74.2 in Aug 2010
83.5 in Jul 1931	9 94.3 in Jun 1935	74.2 in Aug 1909
10 83.3 in Jul 1942	10 94.0 in Jul 1928	10 74.0 in Aug 2019
	94.0 in Aug 1927	

ST LEO (records began in April 1895):

Warmest August's	Coolest August's	Wettest August's	Driest August's
1 84.8 in 2007	1 77.5 in 1922	1 20.16 in 1898	1 2.16 in 1930
2 84.7 in 2005	2 79.4 in 1920	2 19.75 in 1901	2 2.72 in 1980
3 84.2 in 2023	79.4 in 1913	3 17.60 in 1945	3 2.97 in 1921
4 84.1 in 1900	4 79.5 in 1930	4 16.99 in 1979	4 3.05 in 1915
5 84.0 in 1987	79.5 in 1919	5 16.26 in 1905	5 3.78 in 1938
6 83.9 in 1941	79.5 in 1904	6 16.08 in 1965	6 3.90 in 1941
7 83.7 in 1924	7 79.7 in 1992	7 14.97 in 1967	7 4.03 in 1996
8 83.6 in 2006	8 79.8 in 1917	8 14.56 in 1917	4.03 in 1976
83.6 in 1983	9 80.1 in 1923	9 14.20 in 1942	9 4.17 in 1924
83.6 in 1951	80.1 in 1911	10 13.75 in 2022	10 4.25 in 2005
83.6 in 1899	
		97 5.87 in 2023	33 5.87 in 2023

Normal August Temp at STLF1 = 81.4°
Normal August Rain at STLF1 = 8.28 in.

Warmest Summers		Coolest Summers		Wettest Summers		Driest Summers	
1	84.6 in 1998	1	78.2 in 1922	1	53.02 in 1945	1	12.71 in 1930
2	83.4 in 2005	2	78.5 in 1919	2	43.25 in 1901	2	14.51 in 1958
3	83.2 in 1987	3	78.6 in 1920	3	40.38 in 1934	3	15.09 in 1951
	83.2 in 1900	4	78.8 in 1930	4	37.52 in 2012	4	15.97 in 1987
5	83.0 in 2006	5	78.9 in 1923	5	36.13 in 1898	5	15.98 in 1915
6	82.9 in 1981	6	79.2 in 1904	6	35.05 in 1965	6	16.10 in 1980
	82.9 in 1896	7	79.3 in 1921	7	35.02 in 1943		16.10 in 1902
8	82.8 in 2023	8	79.5 in 1918	8	34.48 in 2002	8	16.20 in 1921
	82.8 in 2007		79.5 in 1910	9	33.33 in 2003	9	16.94 in 1997
	82.8 in 1924	10	79.6 in 1935	10	32.26 in 1906	10	17.01 in 1952
			79.6 in 1917	
			79.6 in 1913	85	21.82 in 2023	45	21.82 in 2023

Normal Summer Temp at STL1 = 81.0°
Normal Summer Rain at STL1 = 24.72 in

Warmest Monthly Avg Temp		Warmest Monthly Avg Max Temps		Warmest Monthly Avg Min Temps	
1	86.4 in Jun 1998	1	96.7 in Jun 1998	1	76.1 in Jun 1998
2	84.8 in Aug 2007	2	95.4 in Jun 1898	2	75.8 in Aug 2023
3	84.7 in Aug 2005	3	95.0 in Jun 1981	3	75.1 in Jul 2023
4	84.3 in Jul 2005		95.0 in Jul 1896		75.1 in Aug 2005
	84.3 in Jul 1998	5	94.8 in Aug 2007	5	74.9 in Aug 1995
6	84.2 in Aug 2023	6	94.7 in Aug 1987	6	74.7 in Aug 2007
7	84.1 in Aug 1900		94.7 in Aug 1900		74.7 in Jul 2005
8	84.0 in Aug 1987		94.7 in Jun 1899	8	74.6 in Jul 1998
9	83.9 in Jul 1942		94.7 in Jun 1897	9	74.4 in Aug 1941
	83.9 in Aug 1941	10	94.5 in Jul 1942	10	74.1 in Aug 2021
		...			74.1 in Aug 2017
		82	92.5 in Aug 2023		
			92.5 in Jun 2009		
			92.5 in Jun 2006		
			92.5 in Aug 1961		
			92.5 in Jul 1958		
			92.5 in May 1898		
			92.5 in Jul 1897		

TARPON SPRINGS (records began in January 1892):

Warmest August's		Coolest August's		Wettest August's		Driest August's	
1	85.2 in 2020	1	79.5 in 1905	1	23.60 in 1949	1	1.96 in 1930
2	84.9 in 1995		79.5 in 1904	2	20.99 in 1906	2	2.02 in 1899
3	84.3 in 1993	3	79.6 in 1969	3	18.97 in 2017	3	2.39 in 1963
4	84.2 in 2014		79.6 in 1900	4	18.52 in 1969	4	2.57 in 2001
	84.2 in 2007	5	80.1 in 1967	5	17.77 in 1957	5	2.84 in 1964
	84.2 in 1999		80.1 in 1892	6	17.06 in 1928	6	2.90 in 1934
	84.2 in 1997	7	80.2 in 1894	7	16.99 in 2010	7	3.70 in 2006
8	84.1 in 2019	8	80.4 in 1911	8	16.80 in 1905	8	3.72 in 1921
	84.1 in 2017		80.4 in 1910	9	16.67 in 1939	9	4.33 in 1916
10	84.0 in 2005		80.4 in 1907	10	16.05 in 1898	10	4.39 in 1936
	84.0 in 2004						
	84.0 in 1941						

Average Temperature for August 2023 = Few days missing/unrepresentative
 Normal August Temp at TRPF1 = 83.3°

Total Rainfall for August 2023 = Few days missing
 Normal August Rain at TRPF1 = 9.66 in

Warmest Summers		Coolest Summers		Wettest Summers		Driest Summers	
1	84.5 in 2020	1	79.0 in 1904	1	45.10 in 1909	1	11.64 in 1952
2	84.4 in 2004		79.0 in 1900	2	44.25 in 2012	2	12.65 in 1956
3	84.1 in 1998	3	79.1 in 1894	3	41.21 in 1906	3	12.87 in 1970
4	83.9 in 1993	4	79.4 in 1907	4	37.71 in 1957	4	13.49 in 1916
5	83.8 in 2019	5	79.5 in 1895	5	37.51 in 2015	5	13.64 in 1914
	83.8 in 2016	6	79.6 in 1974	6	37.28 in 2019	6	14.17 in 1980
	83.8 in 2005		79.6 in 1939	7	36.54 in 1943	7	14.80 in 1976
8	83.7 in 1997		79.6 in 1910	8	36.47 in 1939	8	14.90 in 1902
9	83.6 in 2014	9	79.7 in 1908	9	36.17 in 1928	9	15.07 in 1988
	83.6 in 2010	10	79.8 in 1892	10	36.10 in 1945	10	15.17 in 1993

Average Temperature for Summer 2023 = Few days missing/unrepresentative
 Normal Summer Temp at TRPF1 = 82.8°

Total Rainfall for Summer 2023 = Few days missing
 Normal Summer Rain at TRPF1 = 25.77 in

Warmest Monthly Avg Temp	Warmest Monthly Avg Max Temps	Warmest Monthly Avg Min Temps
1 85.2 in Aug 2020	1 95.0 in Jul 1993	1 78.4 in Aug 2020
85.2 in Jul 1932	2 94.9 in Jun 1998	78.4 in Jul 2020
3 85.1 in Jul 2020	3 94.6 in Jul 1932	3 78.2 in Jun 2005
4 85.0 in Jul 1993	4 94.5 in Sep 1925	4 78.1 in Aug 2004
5 84.9 in Aug 1995	5 94.4 in Jul 1997	5 77.9 in Jul 2004
6 84.8 in Jul 1942	6 94.3 in Aug 1997	6 77.8 in Jun 2004
7 84.7 in Jul 2016	94.3 in Jul 1942	7 77.6 in Aug 2019
84.7 in Jul 1997	8 94.0 in Aug 1998	8 77.5 in Jul 2007
9 84.6 in Jul 2004	94.0 in Jul 1992	9 77.4 in Aug 2007
84.6 in Jun 2004	10 93.7 in Sep 1997	77.4 in Aug 2005
	93.7 in Aug 1995	

TAMPA AREA (records began in April 1890):

Warmest August's	Coolest August's	Wettest August's	Driest August's
1 86.9 in 2023	1 80.2 in 1905	1 18.59 in 1949	1 0.78 in 1938
2 85.6 in 2022	2 80.3 in 1967	2 17.83 in 1898	2 2.35 in 1952
3 85.1 in 2011	80.3 in 1913	3 16.47 in 2015	3 2.38 in 1921
85.1 in 1941	4 80.4 in 1922	4 15.17 in 1932	4 2.83 in 2001
5 85.0 in 2021	5 80.5 in 1901	5 14.90 in 2003	5 3.27 in 1990
85.0 in 2017	6 80.6 in 1904	6 14.66 in 1905	6 3.47 in 1924
7 84.9 in 2007	80.6 in 1890	7 14.60 in 2018	7 3.52 in 2009
8 84.8 in 2020	8 80.7 in 1939	8 14.29 in 1939	8 3.63 in 1919
9 84.7 in 2005	80.7 in 1911	9 14.03 in 2004	9 3.75 in 1907
10 84.6 in 2019	10 80.8 in 1969	10 13.75 in 1995	10 3.87 in 1941
	80.8 in 1957
	80.8 in 1898	34 9.97 in 2023	101 9.97 in 2023

Normal August Temp at TPA = 84.0°

Normal August Rain at TPA = 9.03 in

Warmest Summers	Coollest Summers	Wettest Summers	Driest Summers
1 85.7 in 2022	1 80.1 in 1910	1 43.03 in 1945	1 11.16 in 1993
2 85.6 in 2023	2 80.2 in 1955	2 36.13 in 2012	2 13.15 in 1956
3 84.8 in 2020	80.2 in 1913	3 34.79 in 1909	3 13.25 in 1970
4 84.6 in 2021	80.2 in 1904	4 34.67 in 1960	4 13.85 in 1978
5 84.5 in 2010	5 80.3 in 1967	5 34.54 in 2015	5 14.00 in 1977
6 84.4 in 2011	6 80.4 in 1965	6 33.71 in 1925	6 14.25 in 1918
7 84.2 in 1998	7 80.5 in 1968	7 33.68 in 1896	7 15.05 in 1931
8 83.9 in 2018	80.5 in 1890	8 33.66 in 1995	8 15.65 in 2001
83.9 in 2017	9 80.6 in 1907	9 33.46 in 1957	9 15.73 in 1944
83.9 in 2016	80.6 in 1899	10 33.40 in 2013	10 15.88 in 1952
	80.6 in 1894		...
			24 17.01 in 2023

Normal Summer Temp at TPA = 83.6°
Normal Summer Rain at TPA = 24.15 in

Warmest Monthly Avg Temp	Warmest Monthly Avg Max Temps	Warmest Monthly Avg Min Temps
1 86.9 in Aug 2023	1 94.3 in Aug 2023	1 79.7 in Jul 2023
2 86.5 in Jul 2023	2 93.5 in Aug 1951	2 79.5 in Aug 2023
3 86.3 in Jul 2022	3 93.4 in Jul 2022	3 79.2 in Jul 2022
4 85.8 in Sep 2018	4 93.3 in Jul 2023	4 78.8 in Aug 2011
5 85.6 in Aug 2022	5 93.0 in Sep 2018	5 78.6 in Aug 2022
85.6 in Jun 1998	93.0 in Jun 1998	6 78.5 in Sep 2018
7 85.5 in Jul 2020	7 92.9 in Jul 1942	7 78.3 in Aug 2021
8 85.2 in Jun 2022	8 92.8 in Jun 1952	78.3 in Jul 2020
9 85.1 in Aug 2011	9 92.7 in Jul 1992	78.3 in Aug 2017
85.1 in Aug 1941	92.7 in Aug 1990	10 78.2 in Aug 2010

ST PETERSBURG (records began in August 1914):

Warmest August's		Coolest August's		Wettest August's		Driest August's	
1	87.5 in 2005	1	80.8 in 1922	1	21.85 in 1939	1	0.82 in 1938
2	86.8 in 2023	2	81.3 in 1939	2	19.57 in 1949	2	2.91 in 1984
3	85.7 in 2013	3	81.4 in 1947	3	18.62 in 1915	3	2.96 in 1941
4	85.4 in 2017	4	81.5 in 1953	4	17.93 in 1967	4	3.21 in 1998
5	85.3 in 2014	5	81.6 in 1957	5	17.75 in 1995	5	3.33 in 1951
	85.3 in 1941	6	81.8 in 1995	6	16.65 in 1971	6	3.37 in 1919
7	85.2 in 2007		81.8 in 1994	7	16.53 in 1945	7	3.40 in 1933
8	85.0 in 2010		81.8 in 1974	8	16.04 in 1922	8	3.66 in 2005
	85.0 in 1980		81.8 in 1917	9	15.49 in 2016	9	3.67 in 1996
10	84.8 in 2021	10	81.9 in 2016	10	15.33 in 1947	10	4.30 in 1914
	84.8 in 2020		81.9 in 1967	
	84.8 in 1987		81.9 in 1949	74	6.21 in 2023	36	6.21 in 2023

Normal Temp August at SPG = 84.0°
 Normal August Rain at SPG = 8.39 in.

Warmest Summers		Coolest Summers		Wettest Summers		Driest Summers	
1	85.7 in 2005	1	80.9 in 1922	1	47.62 in 1945	1	10.52 in 1931
2	85.6 in 2010	2	81.1 in 1974	2	45.31 in 1939	2	11.17 in 1984
3	85.1 in 2023		81.1 in 1955	3	40.99 in 1995	3	11.48 in 1970
4	84.6 in 1987	4	81.2 in 1947	4	38.08 in 1943	4	12.32 in 1930
5	84.5 in 2020	5	81.4 in 1920	5	36.66 in 1947	5	12.39 in 1916
	84.5 in 2017	6	81.6 in 1995	6	35.03 in 2016	6	13.10 in 1996
	84.5 in 1998		81.6 in 1923	7	35.00 in 1922	7	13.14 in 1993
8	84.3 in 2022		81.6 in 1919	8	34.49 in 1974	8	14.18 in 1941
	84.3 in 2013	9	81.7 in 1968	9	33.26 in 1959	9	14.31 in 1966
10	84.3 in 1980		81.7 in 1965	10	32.62 in 1971	10	14.99 in 1951
			81.7 in 1956			...	
			81.7 in 1953			27	17.31 in 2023
			81.7 in 1917				

Normal Summer Temp at SPG = 83.5°
 Normal Summer Rain at SPG = 22.67 in.

Warmest Monthly Avg Temp	Warmest Monthly Avg Max Temps	Warmest Monthly Avg Min Temps
1 87.5 in Aug 2005	1 93.7 in Aug 2005	1 81.4 in Aug 2023
2 86.8 in Aug 2023	2 93.5 in Jul 1932	2 81.3 in Aug 2005
3 86.7 in Jul 2005	3 92.9 in Jun 2010	3 80.7 in Jul 2023
4 86.5 in Jun 2010	4 92.8 in Jul 1987	80.7 in Jul 2005
5 85.8 in Jul 2023	92.8 in Aug 1941	5 80.1 in Aug 2010
6 85.7 in Aug 2013	92.8 in Jul 1931	80.1 in Jun 2010
85.7 in Sep 2005	7 92.7 in Jul 2005	7 80.0 in Sep 2005
85.7 in Jul 1932	8 92.5 in Aug 1980	8 79.9 in Aug 2014
9 85.5 in Jul 2017	92.5 in Jun 1977	9 79.8 in Aug 2017
85.5 in Jul 2016	10 92.4 in Aug 1951	79.8 in Jul 2010
	11 92.2 in Aug 2023	
	92.2 in Jun 1981	
	92.2 in Jul 1979	
	92.2 in Jul 1942	

PLANT CITY (Temperature records began in September 1892 and
Rainfall records began in February 1893):

Warmest August's	Coolest August's	Wettest August's	Driest August's
1 87.8 in 2023	1 78.7 in 1930	1 17.79 in 2004	1 1.87 in 1902
2 86.6 in 2022	2 79.1 in 1907	2 17.48 in 1953	2 2.44 in 1960
3 85.6 in 2017	3 79.6 in 1939	3 17.17 in 1949	3 3.62 in 1912
4 85.4 in 2021	79.6 in 1906	4 16.43 in 2019	4 3.88 in 2021
85.4 in 2020	5 79.7 in 1931	5 15.69 in 1906	5 3.98 in 1996
6 84.6 in 2018	6 79.9 in 1905	6 15.06 in 1898	6 4.08 in 1954
7 84.3 in 2011	7 80.1 in 2000	7 14.96 in 1939	7 4.29 in 1991
8 84.1 in 2019	8 80.2 in 1933	8 14.04 in 1967	8 4.58 in 1997
9 83.9 in 2007	80.2 in 1911	9 13.95 in 1979	9 4.76 in 1914
83.9 in 1980	10 80.3 in 1973	10 13.92 in 1908	10 4.80 in 1934
	80.3 in 1967
	80.3 in 1904	44 9.78 in 2023	81 9.78 in 2023

Normal Temp August at PLCF1 = 83.6°
Normal Rain August at PLCF1 = 8.85 in.

Warmest Summers	Coollest Summers	Wettest Summers	Driest Summers
1 86.5 in 2023	1 79.7 in 1919	1 41.73 in 1943	1 14.60 in 1956
2 85.6 in 2022	2 79.8 in 1923	2 40.04 in 1910	2 14.98 in 1915
3 85.1 in 2020	3 79.9 in 1921	3 39.69 in 1945	3 15.23 in 1989
4 84.6 in 2021	79.9 in 1920	4 39.40 in 2004	4 15.34 in 1993
84.6 in 2017	5 80.2 in 1967	5 38.91 in 2019	5 15.36 in 1961
6 84.5 in 2019	80.2 in 1947	6 38.77 in 2017	6 15.52 in 1952
7 84.1 in 2018	80.2 in 1930	7 37.53 in 1939	7 16.01 in 1951
8 84.0 in 2016	8 80.3 in 1966	8 36.18 in 1925	8 17.02 in 1970
9 83.4 in 2010	80.3 in 1965	9 36.08 in 1906	9 17.30 in 1988
10 83.3 in 1981	10 80.4 in 1974	10 35.94 in 1905	10 17.39 in 1987
	80.4 in 1968	...	
	80.4 in 1929	24 31.59 in 2023	

Normal Summer Temp at PLCF1 = 83.2°
Normal Summer Rain at PLCF1 = 27.21 in.

Warmest Monthly Avg Temp	Warmest Monthly Avg Max Temps	Warmest Monthly Avg Min Temps
1 87.8 in Aug 2023	1 99.3 in Aug 2023	1 76.3 in Aug 2023
2 87.6 in Jul 2023	99.3 in Jul 2023	2 75.9 in Aug 2021
3 86.6 in Aug 2022	3 97.6 in Aug 2022	75.9 in Aug 2020
4 85.9 in Jul 2022	4 96.5 in Jul 2022	75.9 in Jul 2020
5 85.6 in Aug 2017	96.5 in Jun 1911	5 75.8 in Jul 2023
6 85.5 in Jul 2020	6 96.4 in Jun 2023	75.8 in Aug 2011
7 85.4 in Aug 2021	7 95.8 in Jun 1981	7 75.7 in Aug 2019
85.4 in Aug 2020	8 95.5 in Aug 2017	75.7 in Aug 2017
9 85.2 in Jul 2016	9 95.3 in Aug 1980	9 75.6 in Aug 2022
10 85.0 in Jul 2019	95.3 in Jun 1898	10 75.5 in Jul 2016

LAKELAND (records began in January 1915):

Warmest August's		Coolest August's		Wettest August's		Driest August's	
1	86.0 in 2023	1	80.0 in 1967	1	15.57 in 1948	1	3.40 in 1942
2	85.1 in 1987	2	80.5 in 1973	2	15.19 in 2010	2	3.58 in 1921
3	84.8 in 2022		80.5 in 1949	3	14.15 in 1935	3	3.65 in 1947
4	84.6 in 1995	4	80.6 in 1939	4	13.49 in 1915	4	3.73 in 1930
5	84.4 in 2021		80.6 in 1923	5	12.63 in 2019	5	3.89 in 1950
	84.4 in 1989		80.6 in 1920	6	12.52 in 2004	6	3.98 in 1960
7	84.3 in 2020	7	80.8 in 1969	7	12.23 in 2015	7	4.22 in 2021
	84.3 in 2011		80.8 in 1957	8	11.97 in 1928	8	4.56 in 1982
	84.3 in 2010	9	80.9 in 1959	9	11.93 in 1949	9	4.61 in 1934
10	84.1 in 2017	10	81.0 in 1953	10	11.37 in 2016	10	4.68 in 1970
			81.0 in 1922	
				73	6.53 in 2023	37	6.53 in 2023

Normal Temp August at LLDF1 = 83.3°
 Normal Rain August at LLDF1 = 9.08 in.

Warmest Summers		Coolest Summers		Wettest Summers		Driest Summers	
1	84.6 in 2023	1	79.7 in 1919	1	43.60 in 2017	1	13.76 in 1958
	84.6 in 2010	2	79.8 in 1923	2	36.50 in 2015	2	13.88 in 1998
3	84.4 in 1987	3	79.9 in 1921	3	34.42 in 2019	3	13.96 in 1918
4	84.1 in 2022		79.9 in 1920	4	33.76 in 2013	4	14.67 in 1972
5	84.0 in 2016	5	80.2 in 1967	5	33.29 in 1994	5	15.35 in 1936
6	83.8 in 2020		80.2 in 1947	6	32.40 in 2005	6	15.51 in 1931
	83.8 in 1998		80.2 in 1930	7	32.12 in 1968	7	16.05 in 1950
	83.8 in 1989	8	80.3 in 1966	8	31.87 in 2001	8	16.71 in 1942
9	83.6 in 1995		80.3 in 1965	9	31.78 in 1948	9	16.92 in 1954
10	83.5 in 2021	10	80.4 in 1974	10	31.59 in 1995	10	16.95 in 1921
	83.5 in 2019		80.4 in 1968	
	83.5 in 2011		80.4 in 1929	24	27.86 in 2023	86	27.86 in 2023
	83.5 in 1993						

Normal Summer Temp at LLDF1 = 82.8°
 Normal Summer Rain at LLDF1 = 26.62 in.

Warmest Monthly Avg Temp	Warmest Monthly Avg Max Temps	Warmest Monthly Avg Min Temps
1 86.0 in Aug 2023	1 96.5 in Aug 1987	1 77.4 in Aug 2023
2 85.5 in Jul 2023	2 96.3 in Jul 1992	2 76.6 in Jul 2023
3 85.1 in Jul 2016	3 96.0 in Jun 1998	3 76.2 in Aug 2010
85.1 in Aug 1987	96.0 in Jul 1987	4 76.1 in Aug 2021
5 84.9 in Jul 1992	5 95.6 in Aug 1989	5 76.0 in Aug 2020
6 84.8 in Aug 2022	6 95.4 in Jul 1993	6 75.8 in Aug 2019
84.8 in Jun 2010	7 95.0 in Jul 1989	75.8 in Jul 2016
84.8 in Jul 1987	8 94.9 in Jun 2010	75.8 in Aug 2011
9 84.7 in Jul 2022	94.9 in Jun 1985	9 75.7 in Aug 2022
10 84.6 in Aug 1995	94.9 in Jul 1981	75.7 in Aug 1995
	11 94.7 in Jun 1989	
	94.7 in Jun 1981	
	13 94.6 in Aug 2023	

WINTER HAVEN AREA (records began in March 1941):

Warmest August's	Coolest August's	Wettest August's	Driest August's
1 85.6 in 1989	1 80.0 in 1972	1 14.59 in 1949	1 1.78 in 1960
2 85.5 in 2023	2 80.4 in 1971	2 12.76 in 1977	2 1.88 in 1998
3 85.3 in 2005	80.4 in 1967	3 12.42 in 2022	3 2.04 in 1980
4 85.0 in 2020	4 80.6 in 1957	4 12.21 in 1952	4 2.63 in 1942
5 84.9 in 2022	5 80.8 in 1969	5 11.94 in 1992	5 2.80 in 2005
84.9 in 2019	80.8 in 1959	6 11.78 in 1995	6 3.09 in 1954
84.9 in 2007	7 80.9 in 1968	7 11.39 in 1981	7 3.65 in 1970
84.9 in 1941	8 81.0 in 1982	11.39 in 1957	8 3.73 in 1955
9 84.7 in 2011	81.0 in 1962	9 11.25 in 1948	9 3.88 in 2021
10 84.6 in 1998	10 81.1 in 2008	10 11.22 in 2011	10 3.96 in 1945
	81.1 in 1990	...	
		21 9.00 in 2023	

Normal Temp August at GIF = 84.1°
 Normal Rain August at GIF = 6.52 in.

Warmest Summers		Coolest Summers		Wettest Summers		Driest Summers	
1	84.8 in 1989	1	79.4 in 1968	1	34.98 in 1949	1	9.33 in 1999
2	84.7 in 2022	2	79.7 in 1972	2	34.87 in 1945	2	12.07 in 1980
	84.7 in 2019		79.7 in 1971	3	32.95 in 1992	3	12.14 in 1998
	84.7 in 2010	4	80.0 in 1974	4	32.77 in 1995	4	14.37 in 1963
	84.7 in 1998	5	80.4 in 1967	5	30.66 in 1981	5	14.62 in 1997
6	84.4 in 2016	6	80.7 in 1963	6	30.57 in 2015	6	14.88 in 1972
7	84.3 in 2020		80.7 in 1962	7	30.08 in 1948	7	14.98 in 2009
8	84.0 in 2023	8	80.8 in 1965	8	29.77 in 1974	8	15.10 in 1979
9	83.7 in 2005	9	80.9 in 1959	9	29.75 in 2019	9	16.02 in 1964
10	83.5 in 2021	10	81.0 in 1966	10	28.69 in 1965	10	16.27 in 1996
				...			
				24	24.87 in 2023		

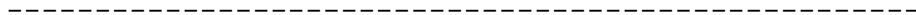
Normal Summer Temp at GIF = 83.8°
Normal Summer Rain at GIF = 21.32 in.

Warmest Monthly Avg Temp		Warmest Monthly Avg Max Temps		Warmest Monthly Avg Min Temps	
1	85.6 in Jul 2022	1	96.2 in Jun 1985	1	77.1 in Aug 2019
	85.6 in Aug 1989	2	95.8 in Jun 1998	2	76.8 in Sep 2018
3	85.5 in Aug 2023	3	95.5 in Aug 1989	3	76.6 in Aug 2023
	85.5 in Jul 2016	4	95.4 in Jul 1942		76.6 in Aug 2020
5	85.3 in Aug 2005	5	95.3 in Aug 1941		76.6 in Jul 2005
6	85.0 in Aug 2020	6	95.0 in Jul 2016	6	76.5 in Aug 2010
	85.0 in Sep 2018		95.0 in Aug 1951	7	76.4 in Jul 2022
	85.0 in Jul 2005	8	94.9 in Aug 1942		76.4 in Jul 2010
9	84.9 in Aug 2022	9	94.8 in Jul 2022	9	76.3 in Jul 2020
	84.9 in Aug 2019		94.8 in Aug 1987		76.3 in Aug 2011
	84.9 in Jun 2010	11	94.5 in Jun 2010		76.3 in Aug 2005
	84.9 in Aug 2007		94.5 in Jun 1952		
	84.9 in Aug 1941	13	94.4 in Aug 2023		
			94.4 in Jun 1944		

BARTOW (records began in June 1892):

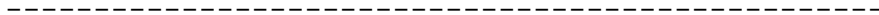
Warmest August's		Coolest August's		Wettest August's		Driest August's	
1	87.4 in 2014	1	79.7 in 1913	1	14.62 in 1905	1	1.60 in 2014
2	86.1 in 2013	2	79.9 in 1894	2	14.39 in 1949	2	2.45 in 1912
3	84.6 in 2023	3	80.3 in 1898	3	14.38 in 1909	3	2.60 in 1987
	84.6 in 1987	4	80.5 in 1967	4	13.38 in 2003	4	2.98 in 1936
	84.6 in 1951	5	80.6 in 1975		13.38 in 2002	5	3.02 in 1950
6	84.4 in 1998		80.6 in 1947	6	13.01 in 1981	6	3.18 in 1938
7	84.2 in 2011		80.6 in 1916	7	12.83 in 1928	7	3.57 in 1930
8	84.1 in 1941	8	80.7 in 1911	8	12.65 in 1992	8	3.74 in 1996
	84.1 in 1924		80.7 in 1892	9	12.57 in 2012	9	4.08 in 2010
10	83.9 in 2010	10	80.8 in 1901	10	12.39 in 1901	10	4.22 in 2021
	83.9 in 2005				...		
	83.9 in 1999			20	11.28 in 2023		
	83.9 in 1997						

Normal Temp August at BARF1 = 82.3°
 Normal Rain August at BARF1 = 7.78 in.



Warmest Summers		Coolest Summers		Wettest Summers		Driest Summers	
1	85.6 in 2014	1	79.0 in 1894	1	36.81 in 2003	1	13.22 in 1964
2	84.8 in 1998	2	79.4 in 1913	2	36.13 in 1909	2	13.28 in 1950
3	84.5 in 2013	3	79.8 in 1892	3	35.84 in 2012	3	14.92 in 1931
4	83.9 in 2010	4	79.9 in 1947	4	35.15 in 1924	4	15.39 in 1996
5	83.7 in 1987	5	80.3 in 1936	5	35.01 in 1939	5	15.47 in 1979
6	83.5 in 2023		80.3 in 1916	6	34.85 in 1949	6	15.56 in 1902
7	83.3 in 2016	7	80.4 in 1976	7	34.31 in 2005	7	15.67 in 1987
	83.3 in 1969		80.4 in 1974	8	34.14 in 1945	8	15.97 in 2007
9	83.2 in 1981		80.4 in 1972	9	33.82 in 1934	9	16.40 in 2014
	83.2 in 1958		80.4 in 1935	10	33.42 in 1928	10	16.42 in 1936
				
				64	23.34 in 2023	63	23.34 in 2023

Normal Summer Temp at BARF1 = 81.9°
 Normal Summer Rain at BARF1 = 23.62 in.



Warmest Monthly Avg Temp	Warmest Monthly Avg Max Temps	Warmest Monthly Avg Min Temps
1 87.4 in Aug 2014	1 96.8 in Jul 1932	1 78.9 in Aug 2014
2 86.1 in Aug 2013	2 96.0 in Jun 1998	2 78.0 in Aug 2013
3 85.9 in Jun 1998	3 95.9 in Aug 2014	3 77.0 in Jun 2015
4 85.7 in Jun 2015	95.9 in Jun 1927	77.0 in Jul 2014
5 85.4 in Jul 2014	5 95.6 in Aug 1924	5 76.6 in Jul 2013
6 84.7 in Jul 1932	6 95.4 in Jun 1981	6 75.7 in Jun 1998
7 84.6 in Aug 2023	95.4 in Jun 1898	75.7 in Aug 1995
84.6 in Aug 1987	8 95.3 in Aug 1951	8 75.6 in Sep 2014
84.6 in Aug 1951	9 95.0 in Jun 1950	9 75.4 in Aug 1998
10 84.5 in Jul 1969	10 94.9 in Jul 1981	10 75.2 in Aug 2023
	...	75.2 in Aug 2010
	31 94.0 in Aug 2023	75.2 in Aug 1903
	94.0 in Jul 1961	
	94.0 in Jun 1948	

SARASOTA-BRADENTON (records began in January 1911):

Warmest August's	Coolest August's	Wettest August's	Driest August's
1 85.9 in 2023	1 79.6 in 1911	1 24.42 in 1981	1 2.51 in 1938
2 85.2 in 2020	2 79.9 in 1947	2 20.97 in 2017	2 2.52 in 1930
3 85.0 in 2014	79.9 in 1922	3 19.97 in 1959	3 3.09 in 1944
4 84.7 in 2016	4 80.0 in 1939	4 19.73 in 1949	4 3.10 in 1952
5 84.5 in 2011	5 80.3 in 1967	5 19.35 in 1922	5 3.11 in 2001
6 84.2 in 2007	80.3 in 1931	6 18.14 in 1928	6 3.20 in 1996
7 83.9 in 1995	80.3 in 1927	7 17.79 in 2003	7 3.91 in 2008
8 83.8 in 2005	8 80.4 in 1930	8 17.63 in 1999	8 3.93 in 1963
9 83.7 in 1990	80.4 in 1916	9 17.04 in 1939	9 3.96 in 1984
83.7 in 1987	10 80.5 in 1934	10 15.92 in 1962	10 3.97 in 2014
	80.5 in 1929
		44 9.12 in 2023	70 9.12 in 2023

Normal Temp August at SRQ = 83.4°
Normal Rain August at SRQ = 9.11 in.

Warmest Summers	Coollest Summers	Wettest Summers	Driest Summers
1 85.0 in 2023	1 78.9 in 1947	1 45.69 in 1943	1 11.09 in 1930
2 84.6 in 2020	78.9 in 1913	2 41.23 in 2017	2 11.20 in 1998
3 84.5 in 2016	3 79.4 in 1911	3 41.08 in 1912	3 11.94 in 1944
4 83.9 in 1998	4 79.5 in 1930	4 39.63 in 1992	4 12.48 in 1951
5 83.6 in 2014	5 79.7 in 1976	5 38.29 in 1922	5 12.60 in 2023
6 83.4 in 2010	79.7 in 1916	6 38.23 in 1945	6 12.75 in 1952
7 83.2 in 2019	7 79.8 in 1929	7 37.73 in 1939	7 13.10 in 2014
8 83.0 in 2011	8 79.9 in 1974	8 35.21 in 1959	8 13.12 in 1948
9 82.9 in 2022	79.9 in 1931	9 35.12 in 1981	9 14.67 in 2009
82.9 in 2021	10 80.0 in 1922	10 33.86 in 1928	10 14.80 in 1914

Normal Summer Temp at SRQ = 82.8°
 Normal Summer Rain at SRQ = 23.55 in.

Warmest Monthly Avg Temp	Warmest Monthly Avg Max Temps	Warmest Monthly Avg Min Temps
1 86.2 in Jul 2023	1 94.5 in Jun 1998	1 78.8 in Jul 2023
2 85.9 in Aug 2023	2 94.2 in Jul 1998	78.8 in Jul 2020
3 85.8 in Jul 2020	3 94.1 in Aug 1998	3 78.0 in Aug 2023
4 85.4 in Jul 2016	4 94.0 in Aug 1938	4 77.8 in Aug 2011
5 85.2 in Aug 2020	5 93.8 in Aug 2023	5 77.5 in Aug 2020
6 85.0 in Aug 2014	93.8 in Jul 2016	6 77.1 in Jul 2016
7 84.8 in Sep 2019	7 93.7 in Aug 1990	7 76.9 in Aug 2019
8 84.7 in Aug 2016	8 93.6 in Jul 2023	76.9 in Aug 2016
9 84.5 in Aug 2011	93.6 in Aug 1989	9 76.6 in Sep 2019
10 84.2 in Aug 2007	10 93.5 in Aug 2014	76.6 in Aug 2005
84.2 in Jul 1998		

VENICE (records began in May 1955):

Warmest August's	Coollest August's	Wettest August's	Driest August's
1 86.1 in 2023	1 80.5 in 1975	1 20.18 in 2017	1 2.96 in 2007
2 86.0 in 2010	80.5 in 1967	2 16.77 in 1981	2 3.00 in 2005
3 85.4 in 2011	3 80.6 in 1968	3 16.47 in 1967	3 3.04 in 1955
85.4 in 2009	4 80.9 in 1976	4 15.76 in 1999	4 3.10 in 2014
5 84.8 in 2012	5 81.0 in 1959	5 13.69 in 1974	5 3.21 in 1997
6 84.7 in 1998	6 81.1 in 1969	6 13.41 in 1971	6 3.25 in 1990
7 84.5 in 1988	7 81.2 in 1974	7 13.11 in 1970	7 3.28 in 1958
8 84.4 in 2019	81.2 in 1957	8 12.94 in 2016	8 3.49 in 1984
9 84.2 in 1997	9 81.4 in 1958	9 12.56 in 1959	9 3.51 in 1956
10 84.1 in 2013	10 81.5 in 1977	10 11.72 in 1977	10 4.06 in 1963
84.1 in 2005	
		46 5.98 in 2023	24 5.98 in 2023

Normal Temp August at VNCF1 = 83.1°
 Normal Rain August at VNCF1 = 8.34 in.

Warmest Summers	Coollest Summers	Wettest Summers	Driest Summers
1 86.2 in 2010	1 80.3 in 1975	1 38.01 in 1995	1 11.65 in 2014
2 85.2 in 2023	2 80.4 in 1974	2 37.89 in 2017	2 12.14 in 1990
3 85.1 in 1998	3 80.5 in 1967	3 37.79 in 1992	3 12.88 in 1997
4 84.7 in 2011	4 80.7 in 1984	4 36.76 in 1974	4 13.54 in 1956
5 84.0 in 2019	80.7 in 1966	5 36.72 in 2003	5 13.56 in 1979
6 83.9 in 2012	6 80.8 in 1956	6 32.82 in 1999	6 13.72 in 2007
7 83.8 in 2020	7 80.9 in 1978	7 32.69 in 2012	7 13.77 in 1955
8 83.5 in 1997	8 81.0 in 2008	8 30.31 in 2005	8 14.13 in 2009
9 83.3 in 2022	81.0 in 1972	9 29.35 in 1987	9 14.26 in 1985
83.3 in 2013	81.0 in 1959	10 29.34 in 1959	14.26 in 1980
83.3 in 2004			...
83.3 in 1993			18 15.77 in 2023

Normal Summer Temp at VNCF1 = 82.5°
 Normal Summer Rain at VNCF1 = 23.54 in.

Warmest Monthly Avg Temp	Warmest Monthly Avg Max Temps	Warmest Monthly Avg Min Temps
1 88.1 in Sep 1988	1 95.5 in Sep 1988	1 80.5 in Sep 1988
2 86.6 in Jul 1989	2 95.4 in Jun 2010	2 79.7 in Jul 1989
3 86.4 in Jun 2010	3 95.3 in Jun 1998	3 78.8 in Aug 2010
4 86.3 in Jul 2023	4 95.1 in Jun 2004	4 78.6 in Sep 1989
5 86.2 in Jul 2010	5 94.9 in Aug 2023	5 78.5 in Jul 2010
6 86.1 in Aug 2023	6 94.8 in Aug 1998	6 78.1 in Jul 2023
7 86.0 in Aug 2010	7 94.5 in Jul 2023	78.1 in Aug 2011
8 85.7 in Jun 1998	8 94.2 in Jul 1998	8 77.3 in Aug 2023
9 85.4 in Aug 2011	9 93.9 in Jul 1997	77.3 in Jun 2010
85.4 in Aug 2009	10 93.8 in Jul 2010	10 77.1 in Aug 2009
85.4 in Sep 1989	93.8 in Aug 2009	
	93.8 in Aug 1997	
	93.8 in Jul 1996	
	93.8 in Jul 1993	

MYAKKA RIVER STATE PARK (Temperature records began in March 1956
and Rainfall records began in Sep 1943):

Warmest August's	Coolest August's	Wettest August's	Driest August's
1 86.7 in 1993	1 80.4 in 1962	1 19.85 in 1981	1 2.81 in 2005
2 85.0 in 1998	2 80.5 in 1959	2 18.61 in 1971	2 3.44 in 1991
3 84.8 in 2017	80.5 in 1957	3 18.45 in 2003	3 3.94 in 2001
4 84.3 in 2005	4 80.9 in 2002	4 17.18 in 2016	4 5.05 in 1974
84.3 in 1999	80.9 in 1972	5 16.85 in 2018	5 5.11 in 2022
6 84.1 in 2011	80.9 in 1971	6 16.60 in 1949	6 5.17 in 1976
7 84.0 in 2019	7 81.1 in 1985	7 15.99 in 1980	7 5.32 in 1996
84.0 in 2016	8 81.3 in 2001	8 15.66 in 1999	8 5.33 in 1944
84.0 in 2010	81.3 in 1969	9 15.62 in 1988	9 5.35 in 1956
10 83.9 in 1997	81.3 in 1963	10 14.68 in 2023	10 5.48 in 1948
11 83.8 in 2015			
12 83.6 in 2023			
83.6 in 1995			

Normal Temp August at MKCF1 = 83.1°
Normal Rain August at MKCF1 = 10.12 in.

Warmest Summers	Coollest Summers	Wettest Summers	Driest Summers
1 85.0 in 1998	1 79.8 in 1962	1 47.18 in 2003	1 13.38 in 1956
2 84.0 in 2010	2 80.1 in 1959	2 46.76 in 2017	2 16.52 in 1996
3 83.5 in 2017	3 80.3 in 1984	3 46.32 in 1995	3 17.03 in 1948
4 83.4 in 2016	80.3 in 1974	4 43.79 in 1981	4 17.41 in 1961
5 83.3 in 2019	5 80.5 in 1972	5 41.67 in 1965	5 17.42 in 2009
83.3 in 1999	80.5 in 1963	6 40.81 in 2012	6 18.65 in 1952
7 83.2 in 2018	7 80.6 in 2002	7 40.58 in 1982	7 19.68 in 1944
83.2 in 1993	80.6 in 1986	8 40.14 in 1992	8 20.18 in 1986
9 83.1 in 2005	80.6 in 1971	9 37.94 in 1968	9 20.32 in 1954
83.1 in 1997	80.6 in 1960	10 37.52 in 2013	10 20.37 in 1964
11 83.0 in 2011		...	
12 82.8 in 2015		20 32.60 in 2023	
13 82.6 in 1996			
14 82.5 in 2023			

Normal Summer Temp at MKCF1 = 82.3°
Normal Summer Rain at MKCF1 = 29.88 in.

Warmest Monthly Avg Temp	Warmest Monthly Avg Max Temps	Warmest Monthly Avg Min Temps
1 86.7 in Aug 1993	1 97.1 in Jun 1998	1 77.5 in Aug 1993
2 85.2 in Jun 1998	2 96.3 in Aug 1998	2 75.6 in Aug 2019
3 85.0 in Aug 1998	3 95.8 in Aug 1993	75.6 in Sep 1993
85.0 in Jul 1998	4 95.7 in Jun 2010	4 75.3 in Aug 2017
5 84.8 in Aug 2017	5 95.6 in Jul 1998	75.3 in Aug 2010
6 84.4 in Jun 2010	95.6 in Jul 1996	6 75.2 in Jul 2005
7 84.3 in Aug 2005	95.6 in Jun 1985	7 74.9 in Jul 2017
84.3 in Aug 1999	8 95.4 in Jul 1993	74.9 in Aug 2016
9 84.2 in Jul 2016	9 95.2 in Aug 1999	9 74.7 in Aug 2011
10 84.1 in Aug 2011	95.2 in Sep 1991	10 74.6 in Aug 2005
84.1 in Jul 2005
...	49 93.2 in Aug 2023	20 73.9 in Aug 2023
21 83.6 in Aug 2023	93.2 in Aug 2016	73.9 in Jul 2018
83.6 in Jul 1997	93.2 in Aug 2015	73.9 in Jul 2010
	93.2 in Jul 2011	
	93.2 in Jun 1993	
	93.2 in Jun 1990	
	93.2 in Jul 1980	

WAUCHULA 2 N (records began in January 1933):

Warmest August's		Coolest August's		Wettest August's		Driest August's	
1	85.4 in 2009	1	77.7 in 1950	1	15.53 in 1949	1	2.66 in 1982
2	85.2 in 2007	2	80.1 in 1953	2	14.17 in 2010	2	2.97 in 1938
3	84.3 in 2023	3	80.3 in 2000	3	14.04 in 2015	3	3.30 in 1958
4	84.2 in 1941	4	80.4 in 1939	4	13.68 in 1939	4	3.67 in 2005
5	83.6 in 1993	5	80.5 in 1967	5	12.76 in 1992	5	3.75 in 1957
6	83.5 in 1989	6	80.7 in 2003	6	12.54 in 1943	6	4.17 in 1965
	83.5 in 1987		80.7 in 1996	7	12.46 in 1953	7	4.24 in 1970
8	83.4 in 2005		80.7 in 1949	8	12.28 in 2003	8	4.48 in 2009
9	83.3 in 2016	9	80.8 in 1959	9	12.11 in 1956	9	4.52 in 1933
	83.3 in 1983		80.8 in 1947	10	11.45 in 2016	10	4.59 in 1941
				11	10.88 in 2023		

Normal Temp August at WAUF1 = 82.3°
 Normal Rain August at WAUF1 = 8.46 in.

Warmest Summers		Coolest Summers		Wettest Summers		Driest Summers	
1	84.6 in 2009	1	78.3 in 1950	1	43.85 in 1939	1	14.24 in 1999
2	83.2 in 2008	2	79.9 in 2012	2	39.39 in 1943	2	14.30 in 1964
	83.2 in 1993		79.9 in 1955	3	38.22 in 1949	3	14.60 in 2000
4	82.9 in 1998	4	80.0 in 1947	4	37.38 in 1953	4	14.65 in 1958
	82.9 in 1987	5	80.1 in 1996	5	35.80 in 2017	5	15.13 in 1952
6	82.7 in 2016		80.1 in 1956	6	34.17 in 1959	6	16.05 in 1998
	82.7 in 2007	7	80.2 in 2013	7	34.14 in 1945	7	16.30 in 2018
8	82.6 in 1942		80.2 in 2000	8	32.94 in 1974	8	16.51 in 1996
9	82.5 in 1969		80.2 in 1953	9	32.53 in 1968	9	16.97 in 1957
10	82.4 in 2017		80.3 in 1976	10	30.58 in 2013	10	17.21 in 1981
	82.4 in 1992		80.3 in 1965				...
	82.4 in 1989					22	19.89 in 2023

Average Temperature for Summer 2023 = Several days missing in July
 Normal Summer Temp at WAUF1 = 81.6°
 Normal Summer Rain at WAUF1 = 24.61 in.

Warmest Monthly Avg Temp	Warmest Monthly Avg Max Temps	Warmest Monthly Avg Min Temps
1 85.4 in Aug 2009	1 95.0 in Aug 2007	1 76.7 in Aug 2009
2 85.2 in Aug 2007	95.0 in Aug 1989	2 76.0 in Sep 2009
3 84.5 in Sep 2009	3 94.8 in Jun 1998	3 75.6 in Jul 2009
84.5 in Jul 2009	4 94.7 in Aug 2023	4 75.4 in Aug 2007
5 84.3 in Aug 2023	5 94.6 in Jul 1981	5 75.1 in Aug 2008
6 84.2 in Aug 1941	6 94.5 in Aug 1987	6 74.9 in Sep 2008
7 83.9 in Jun 2009	94.5 in Jul 1942	7 74.5 in Jul 2008
83.9 in Jul 1992	94.5 in Aug 1941	8 74.2 in Jun 2009
9 83.8 in Jul 1942	9 94.4 in Jun 1985	9 74.1 in Jul 2005
10 83.6 in Jul 2007	10 94.2 in Jun 1948	74.1 in Aug 1993
83.6 in Aug 1993		11 74.0 in Aug 2019
		12 73.9 in Aug 2016
		73.9 in Aug 1995
		14 73.8 in Aug 2023
		73.8 in Jul 1992
		73.8 in Aug 1941

ARCHBOLD BIO STN (records began in January 1969):

Warmest August's	Coolest August's	Wettest August's	Driest August's
1 83.9 in 2023	1 79.7 in 1994	1 20.05 in 2006	1 1.94 in 2000
2 83.6 in 2016	2 79.9 in 1971	2 17.88 in 2004	2 2.71 in 1984
3 83.4 in 2020	3 80.0 in 1984	3 14.31 in 1999	3 2.75 in 2009
4 83.3 in 2010	4 80.1 in 1974	4 13.70 in 2010	4 3.14 in 2007
5 83.1 in 2022	5 80.2 in 1973	5 12.76 in 1979	5 3.50 in 1987
6 82.9 in 2017	6 80.3 in 1976	6 12.33 in 2008	6 4.24 in 1970
7 82.8 in 2014	80.3 in 1972	7 12.12 in 1992	7 4.28 in 1993
8 82.7 in 2015	8 80.4 in 2003	8 11.55 in 2023	8 4.40 in 1997
82.7 in 2011	80.4 in 2000	9 11.35 in 2015	9 4.50 in 2020
10 82.5 in 2005	10 80.6 in 2002	10 11.22 in 2012	10 4.55 in 2014

Normal Temp August at ACHF1 = 82.1°
Normal Rain August at ACHF1 = 8.49 in.

Warmest Summers		Coolest Summers		Wettest Summers		Driest Summers	
1	83.3 in 2010	1	78.8 in 1984	1	41.24 in 1974	1	10.76 in 2000
2	82.9 in 2016	2	79.3 in 1976	2	40.51 in 2002	2	11.29 in 1987
3	82.6 in 2023		79.3 in 1974	3	39.46 in 2013	3	13.75 in 1980
4	82.5 in 2017	4	79.4 in 1971	4	34.39 in 2023	4	14.20 in 1998
5	82.2 in 2022	5	79.8 in 1973	5	34.04 in 2006	5	17.45 in 1997
6	82.1 in 2020		79.8 in 1972	6	34.02 in 2008	6	18.50 in 2009
	82.1 in 1998	7	79.9 in 2008	7	33.94 in 2001	7	18.57 in 2007
8	82.0 in 2015		79.9 in 1994	8	33.72 in 2004	8	19.23 in 1985
9	81.9 in 2019	9	80.0 in 2002	9	32.56 in 1992	9	19.49 in 1983
10	81.8 in 1969		80.0 in 1970	10	31.74 in 1986	10	19.78 in 1972

Normal Summer Temp at ACHF1 = 81.4°
Normal Summer Rain at ACHF1 = 25.68 in.

Warmest Monthly Avg Temp		Warmest Monthly Avg Max Temps		Warmest Monthly Avg Min Temps	
1	83.9 in Aug 2023	1	96.4 in Jun 1998	1	73.5 in Aug 2023
2	83.6 in Aug 2016	2	96.1 in Jun 2010	2	73.1 in Aug 2010
3	83.5 in Jul 2016	3	95.5 in Jul 2016	3	73.0 in Aug 2016
	83.5 in Jun 2010	4	95.4 in Aug 2022	4	72.3 in Jul 2023
5	83.4 in Jul 2023		95.4 in Jul 1981	5	72.2 in Aug 2019
	83.4 in Aug 2020	6	95.2 in Jul 1998	6	72.1 in Sep 2004
7	83.3 in Jul 2022	7	95.1 in Jul 2022	7	72.0 in Aug 2020
	83.3 in Aug 2010	8	94.9 in Aug 2014		72.0 in Aug 2017
9	83.2 in Jul 2010		94.9 in Aug 1987		72.0 in Jul 2010
10	83.1 in Aug 2022	10	94.8 in Aug 2020	10	71.8 in Sep 2016
		...			
		21	94.3 in Aug 2023		
			94.3 in Aug 2016		
			94.3 in Jun 1985		

PUNTA GORDA AREA (records began in May 1914):

Warmest August's	Coollest August's	Wettest August's	Driest August's
1 86.3 in 2023	1 79.8 in 1939	1 19.56 in 1928	1 1.86 in 1927
2 85.1 in 1951	2 80.3 in 1922	2 15.60 in 1995	2 2.07 in 1938
3 84.7 in 2014	3 80.6 in 1969	3 14.01 in 1922	3 2.78 in 1936
4 84.5 in 2020	4 80.8 in 1949	4 13.75 in 2009	4 3.36 in 1976
84.5 in 1987	5 80.9 in 1967	5 13.47 in 2017	5 3.41 in 1997
6 84.4 in 2011	80.9 in 1930	6 13.42 in 1949	6 3.50 in 1984
7 84.3 in 2005	7 81.0 in 1955	7 13.03 in 1959	7 3.55 in 1952
8 84.2 in 2018	81.0 in 1929	8 12.45 in 1967	8 3.82 in 1978
84.2 in 2007	81.0 in 1928	9 12.37 in 2018	9 3.93 in 1955
10 84.1 in 2021	81.0 in 1926	10 11.54 in 1947	10 4.02 in 1943
		11 11.26 in 1935	4.02 in 1921
		12 10.91 in 2023	

Normal Temp August at PGD = 83.5°
 Normal Rain August at PGD = 9.11 in.

Warmest Summers	Coollest Summers	Wettest Summers	Driest Summers
1 84.7 in 2023	1 79.8 in 1929	1 47.45 in 1943	1 9.88 in 1921
2 84.2 in 2020	2 80.3 in 1939	2 43.12 in 2017	2 13.96 in 1932
3 84.0 in 2018	3 80.4 in 1955	3 41.80 in 1912	3 14.17 in 1920
4 83.9 in 1951	80.4 in 1949	4 38.16 in 1992	4 14.88 in 1927
5 83.7 in 2010	5 80.5 in 1971	5 37.93 in 1922	5 15.05 in 1955
6 83.6 in 2016	80.5 in 1938	6 37.24 in 1945	6 15.12 in 1979
7 83.5 in 1980	7 80.6 in 1930	7 34.55 in 2021	7 15.24 in 1956
8 83.4 in 2022	80.6 in 1925	8 33.90 in 1939	8 15.43 in 1952
83.4 in 2014	80.6 in 1922	9 33.81 in 1959	9 15.75 in 1990
83.4 in 2011	10 80.8 in 1974	10 33.24 in 1981	10 15.94 in 2007
	80.8 in 1967
	80.8 in 1928	59 21.56 in 2023	46 21.56 in 2023

Normal Summer Temp at PGD = 82.8°
 Normal Summer Rain at PGD = 26.41 in.

Warmest Monthly Avg Temp	Warmest Monthly Avg Max Temps	Warmest Monthly Avg Min Temps
1 86.3 in Aug 2023	1 95.5 in Jul 2023	1 77.2 in Aug 2023
2 85.8 in Jul 2023	2 95.3 in Aug 2023	2 76.5 in Aug 2011
3 85.1 in Aug 1951	3 94.9 in Aug 1952	3 76.1 in Jul 2023
4 84.7 in Jul 2020	4 94.5 in Aug 1951	4 76.0 in Aug 2010
84.7 in Aug 2014	5 94.4 in Jun 2010	76.0 in Aug 2008
6 84.6 in Sep 2018	94.4 in Jun 1981	6 75.9 in Aug 2020
7 84.5 in Aug 2020	94.4 in Sep 1952	75.9 in Sep 2018
84.5 in Aug 1987	8 94.2 in Jul 1981	75.9 in Jul 2005
9 84.4 in Aug 2011	94.2 in Jul 1963	9 75.8 in Aug 2021
10 84.3 in Jul 2018	10 94.1 in Jun 1952	75.8 in Aug 2019
84.3 in Aug 2005		75.8 in Aug 2005
84.3 in Jul 2005		

FORT MYERS AREA (records began in January 1902):

Warmest August's	Coolest August's	Wettest August's	Driest August's
1 85.9 in 2023	1 79.6 in 1906	1 17.64 in 1932	1 3.12 in 1919
2 85.2 in 2022	79.6 in 1904	2 16.95 in 2017	2 3.14 in 1927
3 84.8 in 1987	3 79.7 in 1910	3 16.82 in 2004	3 3.55 in 1934
4 84.4 in 2014	4 79.8 in 1908	4 16.80 in 2003	4 3.97 in 1902
84.4 in 2005	5 80.0 in 1913	5 16.73 in 1981	5 3.98 in 1963
84.4 in 1985	6 80.4 in 1911	6 16.22 in 1972	6 4.07 in 1996
7 84.3 in 1995	80.4 in 1909	7 15.86 in 1967	7 4.12 in 1958
84.3 in 1981	8 80.5 in 1917	8 14.97 in 1990	8 4.26 in 1964
84.3 in 1979	9 80.6 in 1922	9 14.81 in 1926	9 4.29 in 1955
10 84.2 in 2010	80.6 in 1907	10 14.79 in 1979	10 4.32 in 1953
84.2 in 2007			4.32 in 1924
	
		43 9.69 in 2023	79 9.69 in 2023

Normal Temp August at FMY = 83.4°
Normal Rain August at FMY = 10.43 in.

Warmest Summers		Coolest Summers		Wettest Summers		Driest Summers	
1	85.3 in 1981	1	79.1 in 1904	1	42.27 in 1974	1	11.12 in 1964
2	85.2 in 2023	2	79.2 in 1910	2	42.24 in 2004	2	14.71 in 1944
3	84.6 in 2010	3	79.7 in 1908	3	41.55 in 1912	3	15.74 in 1963
4	84.5 in 2022	4	79.8 in 1906	4	40.57 in 2017	4	16.67 in 1956
5	84.2 in 1979	5	80.0 in 1913	5	40.01 in 1995	5	17.03 in 1970
6	84.0 in 1998	6	80.1 in 1917	6	38.76 in 2005	6	17.20 in 1902
7	83.9 in 1987	7	80.2 in 1903	7	37.58 in 2006	7	17.56 in 1931
	83.9 in 1980		80.2 in 1907	8	36.90 in 1982	8	17.60 in 1950
9	83.7 in 2021		80.2 in 1909	9	36.89 in 1943	9	17.80 in 1980
	83.7 in 2016	10	80.4 in 1918	10	36.76 in 1981	10	17.90 in 2014

Normal Summer Temp at FMY = 83.0°

Total Rainfall for Summer 2023 = *20.07 in.

Normal Summer Rain at FMY = 29.47 in.

* Rainfall missing on June 2, 2023, radar estimate of 1.90 inches occurred on this date, but not included here

Warmest Monthly Avg Temp		Warmest Monthly Avg Max Temps		Warmest Monthly Avg Min Temps	
1	86.1 in Jul 2023	1	95.9 in Jun 1981	1	78.2 in Aug 2023
2	85.9 in Aug 2023	2	94.9 in Jun 2010		78.2 in Jul 2023
	85.9 in Jun 1981		94.9 in Jul 1942	3	77.5 in Jul 1981
4	85.7 in Jul 1981	4	94.6 in Jul 1979	4	77.1 in Aug 2008
	85.7 in Jul 1979	5	94.4 in Aug 1942		77.1 in Aug 1995
6	85.3 in Jul 2022	6	94.2 in Jun 1944	6	77.0 in Jul 2022
	85.3 in Jun 2010	7	94.1 in Jul 2023		77.0 in Aug 1981
8	85.2 in Aug 2022		94.1 in Aug 1987	8	76.8 in Aug 2022
9	84.8 in Jul 1997	9	94.0 in Jul 1997		76.8 in Aug 2011
	84.8 in Jul 1996	10	93.9 in Jul 1992		76.8 in Sep 1979
	84.8 in Aug 1987		93.9 in Jul 1981		76.8 in Jul 1979
		12	93.8 in Jul 1987		
		13	93.7 in Aug 2023		

For more Climate information visit our web site at the following link:
<https://www.weather.gov/tampabay> and then rollover the Climate and Past Weather drop down menu above the graphical forecast images.