



# NOAA - National Weather Service

Tampa Bay Area

2525 14th Avenue SE, Ruskin, Florida 33570

813-645-2323 <https://weather.gov/tampabay>

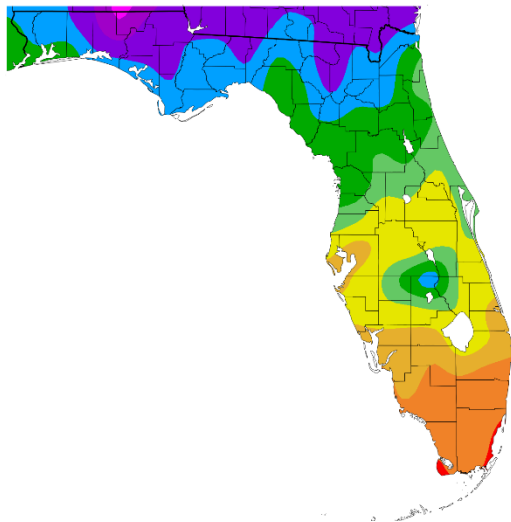
## December and 2021 Climate Summary for West Central and Southwest Florida

December 2021 started out cool with another brief cool down a few days before Christmas, otherwise much of the month was warm and somewhat humid with fog on several mornings. Overall, for the month, temperatures averaged well above normal placing all locations in the Top Ten Warmest for December.

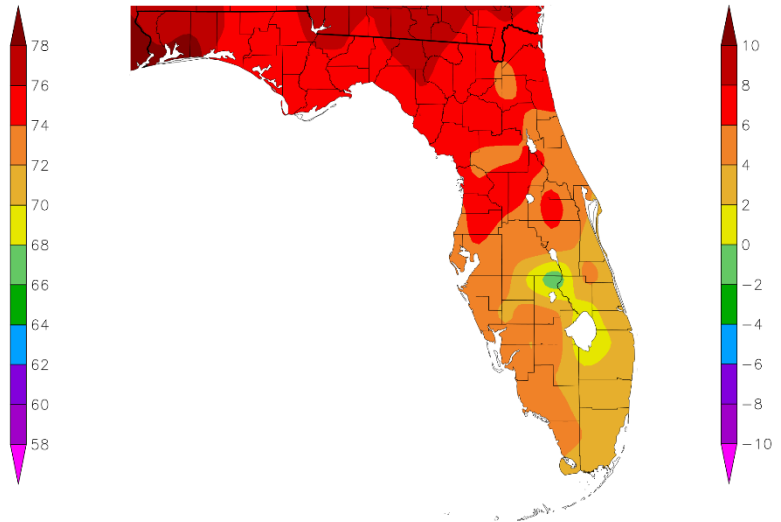
### DECEMBER TEMPERATURE (°F)

Location	December 2021		Normal Dec Temp	Dep fm Normal	Records Began
	Rank	Avg Temp			
Fort Myers Area	4th Warmest	72.6°	67.3°	+5.3°	Jan 1902
Tampa Area	3rd Warmest	71.5°	64.9°	+6.6°	Apr 1890
St Petersburg Area	3rd Warmest	71.0°	65.1°	+5.9°	Aug 1914
Punta Gorda Area	7th Warmest (tie)	70.0°	65.8°	+4.2°	May 1914
Winter Haven Area	3rd Warmest	70.3°	64.6°	+5.7°	Mar 1941
Venice	5th Warmest	70.2°	64.9°	+5.3°	May 1955
Plant City	4th Warmest	69.7°	65.0°	+4.7°	Sep 1892
Sarasota-Bradenton Area	5th Warmest (tie)	69.3°	65.2°	+4.1°	Jan 1911
Lakeland Area	5th Warmest	69.1°	64.8°	+4.3°	Jan 1915
Bartow	7th Warmest	68.5°	63.6°	+4.9°	Jun 1892
St. Leo	3rd Warmest	68.0°	62.1°	+5.9°	Apr 1895
Tarpon Springs	8th Warmest	67.5°	62.4°	+5.1°	Jan 1892
Archbold Bio Stn	6th Warmest	67.3°	64.4°	+2.9°	Jan 1969
Wauchula 2 N	14th Warmest (tie)	67.2°	63.0°	+4.2°	Jan 1933
Myakka River State Park	15th Warmest	66.9°	64.8°	+2.1°	Mar 1956
Brooksville Area	5th Warmest (tie)	66.8°	60.3°	+6.5°	Jan 1892
Inverness 3 SE	5th Warmest	65.4°	59.0°	+6.4°	Jul 1948
Chiefland 5 ESE	1st Warmest	65.0°	57.4°	+7.6°	Jul 1956

Temperature (F)  
12/1/2021 - 12/31/2021



Departure from Normal Temperature (F)  
12/1/2021 - 12/31/2021



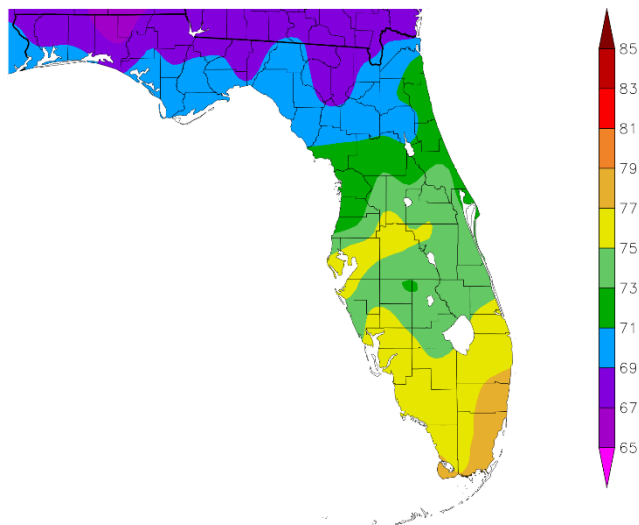
Graphics Source: NOAA Regional Climate Centers

As for 2021, temperatures ended up slightly above normal for the year with many sites in the Top Ten Warmest, but thanks to a rather chilly November far fewer sites made the Top Five Warmest list.

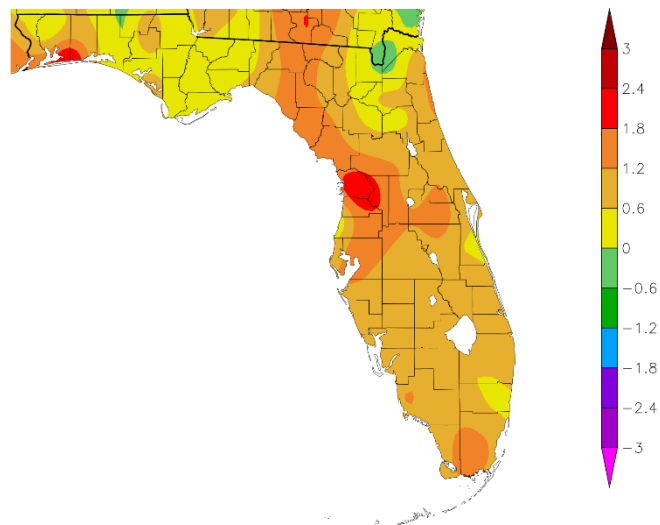
**2021 YEARLY AVERAGE TEMPERATURE (°F):**

Location	2021 Rank	Avg Temp	Normal Ann Temp	Dep fm Normal	Records Began
Fort Myers Area	4th Warmest	76.9°	75.4°	+1.5°	Jan 1902
Tampa Area	4th Warmest	76.1°	74.5°	+1.6°	Apr 1890
St Petersburg Area	4th Warmest (tie)	76.0°	74.7°	+1.3°	Aug 1914
Plant City	3rd Warmest	75.8°	74.3°	+1.5°	Sep 1892
Punta Gorda Area	9th Warmest	75.4°	74.3°	+1.1°	May 1914
Lakeland Area	5th Warmest	75.3°	73.9°	+1.4°	Jan 1915
Winter Haven Area	6th Warmest	75.3°	74.6°	+0.7°	Mar 1941
Sarasota-Bradenton Area	6th Warmest	74.8°	74.1°	+0.7°	Jan 1911
Venice	10th Warmest (tie)	74.5°	73.7°	+0.8°	May 1955
Bartow	8th Warmest (tie)	74.1°	73.1°	+1.0°	Jun 1892
Archbold Bio Stn	9th Warmest (tie)	73.3°	72.9°	+0.4°	Jan 1969
Wauchula 2 N	24th Warmest (tie)	73.1°	72.4°	+0.7°	Jan 1933
Myakka River State Park	19th Coolest	73.0°	73.6°	-0.6°	Mar 1956
Tarpon Springs	38th Warmest (tie)	72.7°	72.9°	-0.2°	Jan 1892
Brooksville Area	15th Warmest (tie)	72.2°	70.7°	+1.5°	Jan 1892
Inverness 3 SE	10th Warmest (tie)	72.1°	69.8°	+2.3°	Jul 1948
Chiefland 5 ESE	7th Warmest	70.6°	69.2	+1.4°	Jul 1956

Temperature (F)  
1/1/2021 – 12/31/2021



Departure from Normal Temperature (F)  
1/1/2021 – 12/31/2021

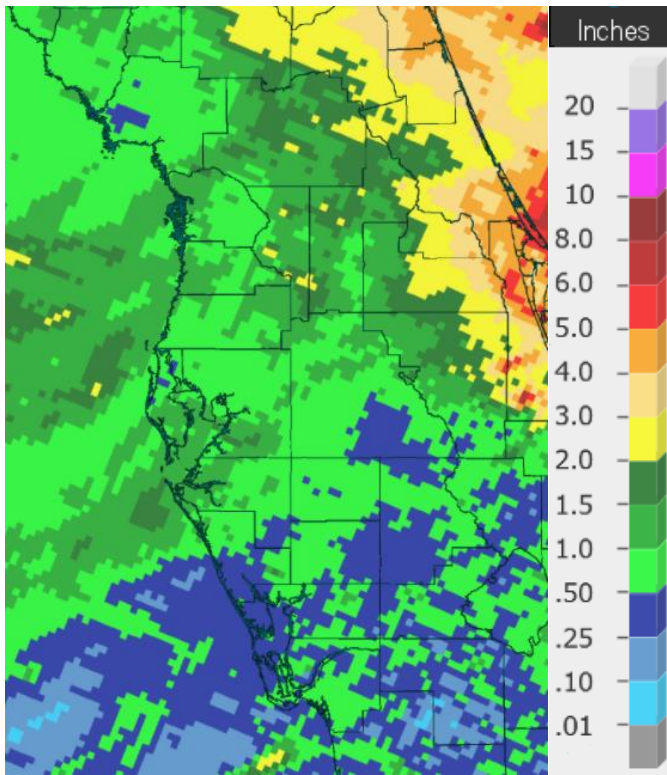


Graphics Source: NOAA Regional Climate Centers

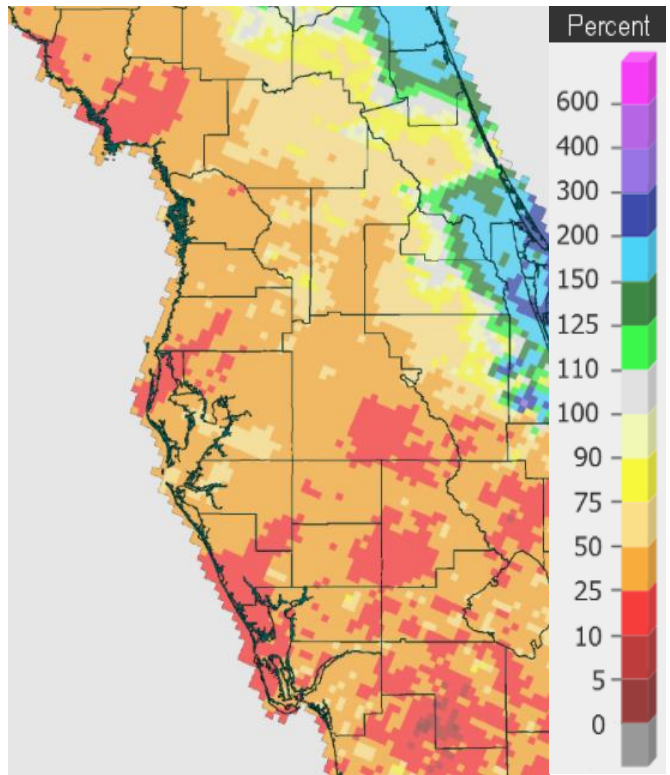
Taking a look at rainfall, December was a rather dry month with most areas less than 50 percent of normal.

**DECEMBER RAINFALL (inches):**

Location	December 2021 Rank	Rain Total	Normal Dec Rain	Dep fm Normal	Records Began
Wauchula 2 N	40th Driest	1.23	2.13	-0.90	Jan 1933
St. Leo	38th Driest (tie)	1.13	2.53	-1.40	Apr 1895
Winter Haven Area	26th Driest	1.06	2.68	-1.62	Mar 1941
Bartow	43rd Driest	1.05	2.16	-1.11	Jun 1892
Myakka River State Park	26th Driest	0.95	2.51	-1.56	Sep 1943
Brooksville Area	32nd Driest (tie)	0.94	2.56	-1.62	Jan 1892
Sarasota-Bradenton Area	33rd Driest (tie)	0.92	2.33	-1.41	Jan 1911
Lakeland Area	30th Driest	0.86	2.61	-1.75	Jan 1915
St. Petersburg Area	28th Driest	0.79	2.39	-1.60	Aug 1914
Inverness 3 SE	9th Driest	0.77	2.48	-1.71	Jul 1948
Plant City	27th Driest (tie)	0.77	2.54	-1.77	Sep 1892
Chiefland 5 ESE	7th Driest	0.71	3.25	-2.54	Jul 1956
Tarpon Springs	23rd Driest	0.65	2.74	-2.09	Jan 1892
Tampa Area	25th Driest (tie)	0.59	2.56	-1.97	Apr 1890
Punta Gorda Area	24th Driest (tie)	0.57	1.99	-1.42	May 1914
Fort Myers Area	35th Driest	0.54	1.90	-1.36	Jan 1902
Venice	9th Driest	0.50	2.31	-1.81	May 1955
Archbold Bio Stn	5th Driest	0.40	2.03	-1.63	Jan 1969



**Rainfall December 2021**

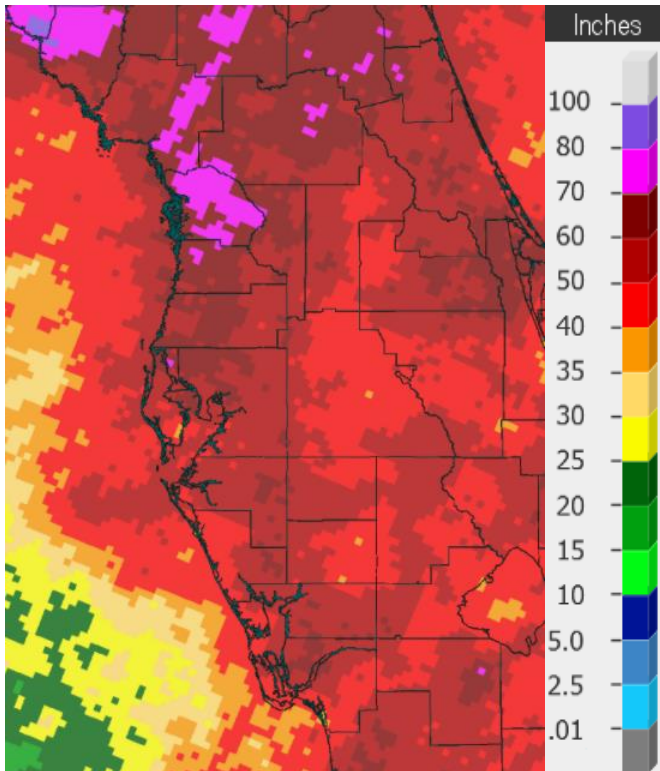


**Percent of Normal**

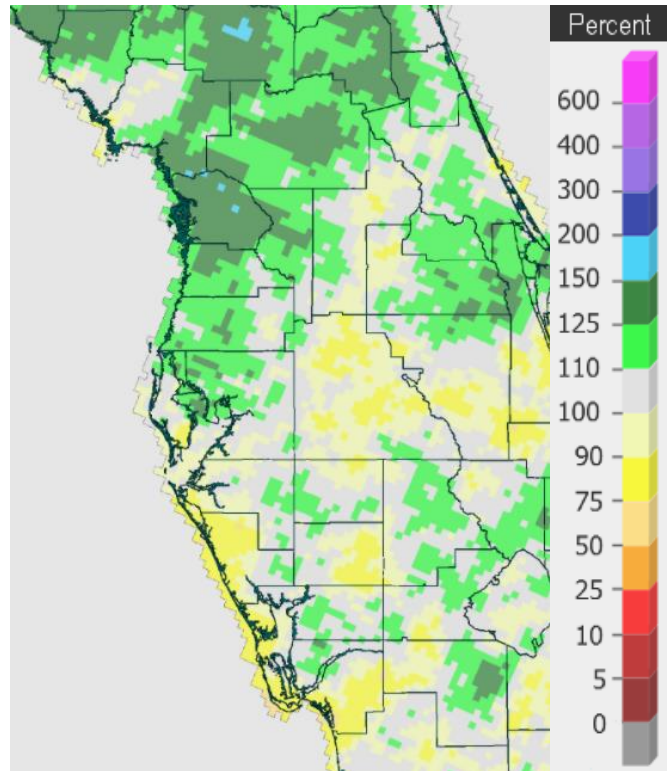
As for 2021, there was a wide range of rainfall amounts with much of the Nature Coast above normal while elsewhere it was a mix of below normal to slightly above normal.

**2021 RAINFALL (inches):**

Location	Rank	2021 Rain Total	Normal Ann Rain	Dep fm Normal	Records Began
Inverness 3 SE	2nd Wettest	77.45	52.39	+25.06	Jul 1948
St. Leo	44th Wettest	56.90	53.46	+3.44	Apr 1895
Archbold Bio Stn	19th Wettest	56.51	54.23	+2.28	Jan 1969
Fort Myers Area	68th Driest	54.13	57.41	-3.28	Jan 1902
Chiefland 5 ESE	15th Driest	53.19	57.10	-3.91	Jul 1956
Brooksville Area	67th Wettest	52.99	51.94	+1.05	Jan 1892
Tarpon Springs	64th Driest	52.20	54.29	-2.09	Jan 1892
Punta Gorda Area	49th Driest (tie)	52.03	52.97	-0.94	May 1914
Bartow	43rd Driest	49.52	50.88	-1.36	Jun 1892
Tampa Area	73rd Driest	49.32	49.48	-0.16	Apr 1890
Wauchula 2 N	30th Driest	49.27	52.00	-2.73	Jan 1933
Lakeland Area	39th Driest	48.54	56.82	-8.28	Jan 1915
Plant City	33rd Driest	47.66	56.11	-8.45	Sep 1892
Sarasota-Bradenton Area	33rd Driest	46.71	49.05	-2.34	Jan 1911
Myakka River State Park	9th Driest	44.36	61.07	-16.71	Sep 1943
Winter Haven Area	7th Driest	39.02	46.12	-7.10	Mar 1941
Venice	7th Driest	38.45	51.27	-12.82	May 1955
St. Petersburg Area	7th Driest	36.40	46.65	-10.25	Aug 1914



**2021 Yearly Rainfall**



**Percent of Normal**

On the following pages are tables of the Top Ten Warmest, Coolest, Wettest, and Driest Decembers and Years at some official NWS locations, which include the average/total for this December and 2021 where available, and the 1991-2020 Normal temperature and rainfall for the month of December and Annually.

**CHIEFLAND 5 ESE** (Records began in July 1956):

Warmest Decembers	Coollest Decembers	Wettest Decembers	Driest Decembers
<b>1 65.0 in 2021</b>	1 47.7 in 2010	1 11.85 in 2018	1 0.00 in 1956
2 64.7 in 1971	2 48.0 in 1963	2 9.84 in 1964	2 0.04 in 2015
3 63.7 in 1998	3 50.2 in 1989	3 9.68 in 1997	3 0.42 in 2001
4 63.7 in 1984	4 51.3 in 1960	4 8.39 in 2005	0.42 in 1984
5 62.1 in 1982	5 52.2 in 2005	5 7.77 in 1996	5 0.51 in 2011
6 61.9 in 1990	6 52.3 in 2003	6 6.66 in 1967	6 0.66 in 2010
7 61.6 in 1956	7 52.5 in 1993	7 6.52 in 1983	<b>7 0.71 in 2021</b>
8 61.5 in 2001	8 52.9 in 1980	8 6.20 in 1969	8 0.72 in 1980
9 61.4 in 2006	9 53.0 in 1985	9 5.53 in 1976	9 0.78 in 1985
61.4 in 1991	53.0 in 1968	10 5.38 in 1977	10 0.80 in 1994

Normal Temperature for December at CHIF1 = 57.4°  
Normal Rainfall for December at CHIF1 = 3.25 inches

---

Warmest Years	Coollest Years	Wettest Years	Driest Years
1 72.0 in 1998	1 66.5 in 2010	1 99.47 in 1964	1 40.77 in 2008
2 71.8 in 2020	2 67.0 in 1969	2 77.29 in 1959	2 41.70 in 2011
3 71.6 in 1990	3 67.4 in 1963	3 76.86 in 2018	3 41.85 in 2000
4 71.5 in 2018	4 67.7 in 1966	4 74.06 in 2004	4 43.05 in 2006
5 71.1 in 1991	5 68.0 in 1976	5 70.31 in 1996	5 45.45 in 1990
6 70.8 in 1982	6 68.2 in 1958	6 69.40 in 1983	6 46.69 in 2007
<b>7 70.6 in 2021</b>	7 68.4 in 2000	7 68.98 in 1965	7 47.05 in 1999
8 70.4 in 1975	68.4 in 1962	8 67.91 in 1982	8 48.04 in 1977
9 70.3 in 2012	9 68.5 in 1996	9 67.59 in 1966	9 49.21 in 1972
70.3 in 1959	68.5 in 1977	10 67.33 in 1957	10 49.50 in 2020
			11 50.70 in 1989
			12 51.15 in 1963
			13 51.24 in 1981
			14 51.35 in 2010
			<b>15 53.19 in 2021</b>

Normal Temperature for the Year at CHIF1 = 69.2°  
Normal Rainfall for the Year at CHIF1 = 57.10 inches

**INVERNESS 3 SE** (Records began in July 1948):

Warmest Decembers		Coolest Decembers		Wettest Decembers		Driest Decembers	
1	69.1 in 2015	1	47.7 in 2010	1	11.23 in 2018	1	0.11 in 1984
2	67.0 in 1948	2	50.1 in 1989	2	10.46 in 1997	2	0.14 in 2011
3	66.8 in 1971	3	52.4 in 2002	3	7.80 in 1953	3	0.26 in 1956
4	66.3 in 2016	4	54.1 in 2005	4	6.64 in 2002	4	0.42 in 1998
<b>5</b>	<b>65.4 in 2021</b>	5	54.3 in 1963	5	6.37 in 1973	5	0.50 in 2016
6	65.3 in 1949	6	54.4 in 1993	6	5.40 in 1969	6	0.63 in 2001
7	64.9 in 1967	7	55.0 in 1960	7	5.30 in 1977	7	0.73 in 2010
8	64.4 in 1956	8	55.4 in 2000	8	5.23 in 1972	8	0.75 in 1961
	64.4 in 1951	9	55.5 in 2003	9	5.05 in 1981	<b>9</b>	<b>0.77 in 2021</b>
10	64.3 in 2007	10	55.9 in 1997	10	4.89 in 1983	10	0.79 in 1990

Normal Temperature for December at INVF1 = 59.0  
 Normal Rainfall for December at INVF1 = 2.48 inches

Warmest Years		Coolest Years		Wettest Years		Driest Years	
1	73.4 in 2015	1	68.8 in 1988	1	87.00 in 1960	1	35.66 in 1999
2	73.0 in 2020	2	68.9 in 2010	<b>2</b>	<b>77.45 in 2021</b>	2	36.50 in 1956
3	72.8 in 1949	3	69.0 in 1996	3	76.21 in 1953	3	37.34 in 1990
4	72.6 in 1953	4	69.3 in 1995	4	75.47 in 1982	4	38.22 in 2000
5	72.3 in 2019	5	69.4 in 2005	5	69.77 in 1959	5	40.35 in 2006
6	72.2 in 1975	6	69.6 in 1992	6	68.72 in 1964	6	42.22 in 1998
	72.2 in 1974	7	69.7 in 1993	7	68.65 in 2018	7	43.28 in 1955
	72.2 in 1959	8	69.8 in 1981	8	65.24 in 1958	8	44.24 in 1961
	72.2 in 1957		68.8 in 1977	9	63.25 in 2002	9	44.29 in 1954
<b>10</b>	<b>72.1 in 2021</b>	10	69.9 in 2001	10	62.76 in 1992	10	45.17 in 2013
	72.1 in 1965						

Normal Temperature for the Year at INVF1 = 69.8°  
 Normal Rainfall for the Year at INVF1 = 52.39 inches

**BROOKSVILLE AREA** (Records began in January 1892):

Warmest Decembers	Coollest Decembers	Wettest Decembers	Driest Decembers
1 70.5 in 2015	1 47.9 in 2010	1 10.10 in 1997	1 0.01 in 1955
2 70.1 in 1931	2 53.9 in 1935	2 9.23 in 2018	2 0.04 in 2015
3 68.6 in 1971	3 54.3 in 2003	3 8.30 in 1930	3 0.08 in 2011
4 67.1 in 1948	4 54.4 in 1989	4 8.10 in 1953	4 0.21 in 1908
<b>5 66.8 in 2021</b>	5 54.7 in 2005	5 6.91 in 1925	5 0.27 in 1910
66.8 in 1926	54.7 in 1903	6 6.40 in 1969	6 0.32 in 1946
7 66.5 in 1932	7 54.8 in 1930	7 6.38 in 1983	0.32 in 1932
8 66.4 in 1982	8 54.9 in 1963	8 5.99 in 2002	8 0.33 in 1956
9 66.3 in 1940	9 55.3 in 1985	9 5.68 in 1973	9 0.37 in 1992
10 66.2 in 1933	10 55.4 in 1910	10 5.60 in 1905	0.37 in 1990
		...	...
		<b>96 0.94 in 2021</b>	<b>32 0.94 in 2021</b>
		0.94 in 2000	0.94 in 2000

Normal Temperature for December at BKV = 60.3°  
 Normal Rainfall for December at BKV = 2.56 inches

-----

Warmest Years	Coollest Years	Wettest Years	Driest Years
1 74.3 in 1927	1 67.9 in 2010	1 80.17 in 1959	1 35.63 in 2010
2 73.7 in 1929	2 68.7 in 1920	2 79.39 in 1912	2 36.58 in 2000
3 73.6 in 2015	3 69.4 in 2000	3 77.49 in 1960	3 37.46 in 1954
4 73.5 in 1933	4 69.5 in 2004	4 75.09 in 1945	4 37.83 in 1927
5 73.4 in 2020	5 69.6 in 2003	5 72.34 in 1982	5 38.08 in 1955
6 73.3 in 1948	6 69.7 in 2005	6 71.91 in 1928	6 38.20 in 1931
7 73.0 in 2019	7 69.9 in 1894	7 71.35 in 1964	7 39.62 in 2006
8 72.9 in 1949	8 70.0 in 2008	8 70.98 in 1995	8 40.48 in 1951
72.9 in 1939	9 70.1 in 1999	9 70.12 in 1906	9 40.70 in 1977
10 72.7 in 1946	70.1 in 1924	10 69.70 in 1983	10 41.10 in 1956
11 72.6 in 1994		...	...
72.6 in 1945		<b>67 52.99 in 2021</b>	<b>58 52.99 in 2021</b>
72.4 in 1938			
72.4 in 1934			
<b>15 72.2 in 2021</b>			
72.2 in 1928			

Normal Temperature for the Year at BKV = 70.7°  
 Normal Rainfall for the Year at BKV = 51.94 inches

-----



**ST LEO** (Records began in April 1895):

Warmest Decembers	Coollest Decembers	Wettest Decembers	Driest Decembers
1 70.6 in 2015	1 51.4 in 2010	1 13.99 in 1997	1 0.13 in 1984
2 69.6 in 1931	2 52.1 in 1935	2 10.68 in 2002	0.13 in 1906
<b>3 68.0 in 2021</b>	3 53.0 in 1930	3 9.17 in 2018	3 0.14 in 2016
4 67.7 in 2007	4 54.1 in 1903	4 7.50 in 1900	4 0.17 in 1933
5 67.6 in 1948	5 54.2 in 1910	5 7.43 in 1981	5 0.18 in 1938
6 67.5 in 2001	6 55.1 in 1917	6 6.83 in 1969	6 0.22 in 2011
67.5 in 1984	7 56.6 in 1989	7 6.47 in 1983	0.22 in 1990
8 67.3 in 2006	8 56.7 in 1909	8 6.16 in 1953	8 0.23 in 1932
9 67.2 in 1998	9 57.0 in 1960	9 5.99 in 1907	0.23 in 1908
10 66.9 in 1982	10 57.2 in 1927	10 5.67 in 1930	10 0.31 in 1928
	57.2 in 1895		...
			<b>38 1.13 in 2021</b>
			1.13 in 1998

Normal Temperature for December at STLF1 = 62.1°  
 Normal Rainfall for December at STLF1 = 2.53 inches

-----

Warmest Years	Coollest Years	Wettest Years	Driest Years
1 74.5 in 1998	1 69.3 in 1930	1 81.93 in 1945	1 36.61 in 1961
2 74.4 in 1990	2 69.5 in 1920	2 80.06 in 1900	2 39.27 in 2000
74.4 in 1948	3 69.6 in 2010	3 79.57 in 1953	3 40.49 in 1932
4 74.1 in 1982	69.6 in 1910	4 75.57 in 1983	4 41.37 in 1955
5 73.9 in 2007	5 69.9 in 1931	5 75.34 in 1960	5 41.69 in 1908
6 73.8 in 2020	6 70.0 in 1928	6 72.45 in 1982	6 42.02 in 1990
7 73.7 in 2006	7 70.2 in 1903	7 71.29 in 2003	7 42.62 in 1952
73.7 in 1994	8 70.3 in 1968	8 70.41 in 1959	8 42.98 in 1980
73.7 in 1949	70.3 in 1940	9 69.85 in 1934	9 43.44 in 2006
10 73.6 in 1985	70.3 in 1917	10 69.68 in 2002	10 43.47 in 1967
73.6 in 1946		...	...
		<b>44 56.90 in 2021</b>	<b>81 56.90 in 2021</b>

Average Temperature for 2021 = Not Available, Many Days Missing in March 2021  
 Normal Temperature for the Year at STLF1 = 71.9°  
 Normal Rainfall for the Year at STLF1 = 53.46 inches

-----

**TARPON SPRINGS** (Records began in January 1892):

Warmest Decembers	Coollest Decembers	Wettest Decembers	Driest Decembers
1 72.8 in 1931	1 50.9 in 2010	1 15.60 in 1997	1 0.02 in 1984
2 71.4 in 2015	2 53.1 in 1935	2 12.27 in 2002	2 0.12 in 2016
3 68.6 in 1971	3 53.3 in 1903	3 10.00 in 2018	3 0.14 in 1946
4 68.2 in 1998	4 53.6 in 1963	4 9.08 in 1983	4 0.17 in 1928
5 67.9 in 1982	5 55.0 in 1910	5 7.79 in 1969	5 0.19 in 2000
6 67.6 in 2016	6 55.6 in 1960	6 7.48 in 1973	6 0.20 in 1938
67.6 in 2001	55.6 in 1917	7 6.95 in 1953	7 0.25 in 1906
<b>8 67.5 in 2021</b>	8 55.9 in 1930	8 5.75 in 1930	8 0.28 in 1908
9 67.2 in 2007	9 56.3 in 1989	9 5.47 in 1989	9 0.31 in 2011
67.2 in 2006	10 56.5 in 2004	10 5.34 in 1907	10 0.35 in 1933
67.2 in 1992			...
			<b>23 0.65 in 2021</b>

Normal Temperature for December at TRPF1 = 62.4°

Normal Rainfall for December at TRPF1 = 2.74 inches

-----

Warmest Years	Coollest Years	Wettest Years	Driest Years
1 74.9 in 2019	1 69.5 in 1895	1 83.20 in 1959	1 32.85 in 2007
2 74.8 in 1990	2 69.6 in 1910	2 77.78 in 1957	2 32.87 in 1956
3 74.7 in 1994	3 69.9 in 1963	3 74.81 in 1960	3 33.48 in 1927
4 74.6 in 2015	4 70.0 in 1940	4 73.83 in 1983	4 35.39 in 1952
5 74.4 in 2017	5 70.1 in 1892	5 68.67 in 2012	5 36.66 in 2003
74.4 in 1997	6 70.2 in 1968	6 67.64 in 1969	6 38.21 in 1967
74.4 in 1991	70.2 in 1896	7 67.43 in 2019	7 38.65 in 1907
8 74.2 in 1998	8 70.3 in 2010	8 67.00 in 1925	8 39.65 in 1902
9 74.1 in 1932	70.3 in 1969	9 66.98 in 1900	9 40.15 in 1908
10 74.0 in 2018	10 70.5 in 1958	10 66.61 in 1997	10 40.50 in 1976
74.0 in 1995	70.5 in 1904	...	...
74.0 in 1927		<b>62 52.20 in 2021</b>	<b>64 52.20 in 2021</b>
74.0 in 1922			
...	...		
<b>38 72.7 in 2021</b>	<b>64 72.7 in 2021</b>		
72.7 in 2011	72.7 in 2011		

Normal Temperature for the Year at TRPF1 = 72.9°

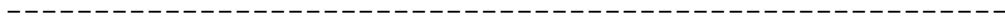
Normal Rainfall for the Year at TRPF1 = 54.29 inches

**TAMPA AREA** (Records began in April 1890):

Warmest Decembers	Coollest Decembers	Wettest Decembers	Driest Decembers
1 73.4 in 2015	1 53.2 in 2010	1 15.57 in 1997	1 0.07 in 1984
2 72.3 in 1931	2 54.5 in 1935	2 14.10 in 2002	2 0.09 in 1946
<b>3 71.5 in 2021</b>	3 54.9 in 1963	3 8.69 in 2018	0.09 in 1906
4 70.1 in 2016	4 55.5 in 1910	4 7.36 in 1907	4 0.13 in 1933
5 69.5 in 2006	5 55.8 in 1903	5 7.04 in 1941	5 0.19 in 2011
6 69.3 in 1971	6 56.1 in 1989	6 6.66 in 1950	0.19 in 1990
7 68.8 in 2001	7 56.7 in 1930	7 5.99 in 1930	7 0.20 in 1944
8 68.5 in 2013	8 56.8 in 1917	8 5.52 in 1973	8 0.21 in 1956
9 68.4 in 2007	9 57.5 in 1980	9 5.17 in 1969	9 0.29 in 1938
10 68.0 in 1998	57.5 in 1909	10 5.14 in 1905	10 0.30 in 1949
68.0 in 1948			...
			<b>25 0.59 in 2021</b>
			0.59 in 1968

Normal Temperature for December at TPA = 64.9°

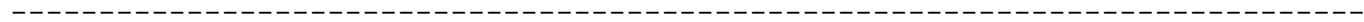
Normal Rainfall for December at TPA = 2.56 inches



Warmest Years	Coollest Years	Wettest Years	Driest Years
1 76.3 in 2020	1 69.8 in 1968	1 76.57 in 1959	1 28.89 in 1956
76.3 in 2017	2 70.1 in 1901	2 70.43 in 1957	2 29.85 in 2000
3 76.2 in 2015	3 70.3 in 1910	3 67.71 in 1997	3 31.47 in 1977
<b>4 76.1 in 2021</b>	4 70.4 in 1981	4 67.19 in 1912	4 32.25 in 1908
5 75.8 in 2019	5 70.5 in 1969	5 66.93 in 1894	5 32.31 in 1984
6 75.6 in 2018	6 71.0 in 1976	6 66.65 in 1945	6 33.90 in 1974
7 75.3 in 1990	71.0 in 1966	7 66.46 in 1979	7 34.32 in 1999
8 75.2 in 2016	71.0 in 1940	8 65.95 in 1947	8 34.39 in 1990
9 74.8 in 2012	71.0 in 1895	9 65.44 in 1960	9 34.77 in 1927
10 74.7 in 2011	71.0 in 1892	10 63.82 in 1899	10 34.87 in 1944
		...	...
		<b>59 49.32 in 2021</b>	<b>73 49.32 in 2021</b>

Normal Temperature for the Year at TPA = 74.5°

Normal Rainfall for the Year at TPA = 49.48 inches



**ST PETERSBURG AREA** (Records began in August 1914):

Warmest Decembers	Coollest Decembers	Wettest Decembers	Driest Decembers
1 74.2 in 1931	1 56.4 in 2010	1 17.41 in 2002	1 0.07 in 1984
2 71.9 in 1971	2 56.7 in 1989	2 14.62 in 1997	2 0.14 in 1949
<b>3 71.0 in 2021</b>	3 56.9 in 1935	3 7.00 in 1983	0.14 in 1938
4 70.6 in 2015	4 57.1 in 1963	4 6.77 in 1973	4 0.24 in 1990
5 69.7 in 1998	5 58.7 in 1930	5 6.67 in 1930	5 0.28 in 2016
6 69.5 in 2016	6 58.8 in 1917	6 6.45 in 1969	6 0.38 in 2015
69.5 in 1948	7 59.2 in 1962	7 6.03 in 1914	7 0.41 in 1924
8 69.4 in 2013	8 59.6 in 1950	8 5.92 in 1953	8 0.43 in 1932
9 69.3 in 2007	9 60.0 in 1954	9 5.84 in 2018	9 0.44 in 1946
10 69.2 in 2001	10 60.4 in 1944	10 5.49 in 1950	10 0.45 in 2011
			...
			<b>28 0.79 in 2021</b>

Normal Temperature for December at SPG = 65.1°

Normal Rainfall for December at SPG = 2.39 inches

-----

Warmest Years	Coollest Years	Wettest Years	Driest Years
1 76.4 in 2020	1 71.8 in 1940	1 87.62 in 1959	1 30.41 in 1984
76.4 in 2015	2 72.3 in 1920	2 79.30 in 1953	2 32.57 in 1966
3 76.1 in 2017	3 72.4 in 1968	3 73.88 in 1957	3 33.54 in 2006
<b>4 76.0 in 2021</b>	72.4 in 1963	4 72.81 in 1997	4 34.01 in 1927
76.0 in 2003	5 72.5 in 1996	5 72.59 in 1947	5 34.88 in 1956
6 75.7 in 2005	6 72.6 in 1917	6 70.12 in 1954	6 36.34 in 1944
7 75.6 in 1946	7 72.7 in 1966	7 69.66 in 1988	<b>7 36.40 in 2021</b>
8 75.5 in 2012	72.7 in 1954	8 67.23 in 1922	8 36.52 in 2007
75.5 in 1972	72.7 in 1915	9 65.00 in 1952	9 36.62 in 1923
75.5 in 1933	10 72.8 in 1983	10 64.87 in 1995	10 37.15 in 2005
75.5 in 1932			

Normal Temperature for the Year at SPG = 74.7°

Normal Rainfall for the Year at SPG = 46.65 inches

**PLANT CITY** (Records began in September 1892):

Warmest Decembers	Coollest Decembers	Wettest Decembers	Driest Decembers
1 73.0 in 2015	1 51.1 in 1935	1 14.75 in 1997	1 0.00 in 1908
2 70.6 in 1971	2 53.0 in 2010	2 9.63 in 2002	2 0.05 in 1906
3 70.5 in 2016	3 54.0 in 1930	3 7.94 in 2018	3 0.21 in 1932
<b>4 69.7 in 2021</b>	4 54.1 in 1910	4 7.62 in 1905	4 0.22 in 1984
5 69.6 in 1931	5 56.0 in 1989	5 6.57 in 1983	5 0.26 in 1987
6 68.9 in 1948	6 56.1 in 1963	6 6.47 in 1925	0.26 in 1917
7 68.4 in 2013	7 56.2 in 1903	7 6.14 in 1969	7 0.28 in 2016
8 67.9 in 1978	8 57.2 in 1915	8 6.06 in 1907	0.28 in 1962
9 67.7 in 2007	9 57.3 in 1901	9 6.04 in 1930	9 0.30 in 1933
10 67.6 in 1998	10 57.5 in 1917	10 5.80 in 1941	10 0.32 in 1956
			0.32 in 1946
			...
			<b>27 0.77 in 2021</b>
			0.77 in 2007
			0.77 in 1966

Normal Temperature for December at PLCF1 = 65.0°  
Normal Rainfall for December at PLCF1 = 2.54 inches

---

Warmest Years	Coollest Years	Wettest Years	Driest Years
1 76.6 in 2019	1 69.2 in 1930	1 86.68 in 1959	1 32.96 in 1961
2 76.4 in 2020	2 69.4 in 1931	2 79.20 in 1947	2 36.36 in 1909
<b>3 75.8 in 2021</b>	3 69.8 in 1940	3 78.25 in 1960	3 37.24 in 1956
4 75.3 in 2015	4 70.4 in 1928	4 76.88 in 2004	4 39.17 in 1977
5 75.0 in 2016	5 70.6 in 1942	5 75.82 in 1953	5 39.29 in 2007
6 74.9 in 2018	70.6 in 1935	6 71.97 in 1983	6 39.48 in 1981
7 74.2 in 1948	7 70.8 in 2010	7 71.76 in 1933	7 39.74 in 1990
8 74.1 in 1990	70.8 in 1926	8 70.65 in 1957	8 40.41 in 1927
74.1 in 1911	9 70.9 in 1976	9 69.35 in 1905	9 40.49 in 1908
10 73.9 in 2011	70.9 in 1932	10 68.88 in 2018	10 42.38 in 2000
73.9 in 1949			...
			<b>33 47.66 in 2021</b>

Normal Temperature for the Year at PLCF1 = 74.3°  
Normal Rainfall for the Year at PLCF1 = 56.11 inches

**LAKELAND AREA** (Records began in January 1915):

Warmest Decembers	Coollest Decembers	Wettest Decembers	Driest Decembers
1 73.1 in 2015	1 53.2 in 2010	1 12.28 in 1997	1 Trace in 1917
2 72.8 in 1931	2 54.8 in 1935	2 11.74 in 2002	2 0.09 in 1944
3 70.2 in 2016	3 56.2 in 1963	3 8.13 in 2018	3 0.10 in 1924
4 70.0 in 1971	4 56.8 in 1989	4 7.04 in 1983	4 0.12 in 1938
<b>5 69.1 in 2021</b>	5 57.3 in 1960	5 6.15 in 1930	5 0.14 in 1962
6 68.6 in 2013	6 57.9 in 1930	6 6.09 in 1925	6 0.17 in 1987
7 68.4 in 2007	7 58.2 in 1950	7 5.51 in 1989	7 0.30 in 1932
8 68.0 in 1922	8 58.4 in 1954	8 5.33 in 1941	8 0.34 in 1984
9 67.9 in 2001	9 58.9 in 1980	9 5.21 in 1949	9 0.35 in 1990
10 67.8 in 1998	10 59.0 in 1969	10 4.53 in 1950	10 0.36 in 1943
	59.0 in 1944		0.36 in 1933
			...
			<b>30 0.86 in 2021</b>

Normal Temperature for December at LLDF1 = 64.8°  
 Normal Rainfall for December at LLDF1 = 2.61 inches

-----

Warmest Years	Coollest Years	Wettest Years	Driest Years
1 75.7 in 2020	1 70.6 in 1968	1 78.15 in 2018	1 34.93 in 1927
75.7 in 2015	2 70.9 in 1969	2 70.24 in 1959	2 35.83 in 1961
3 75.6 in 2019	3 71.0 in 1966	3 69.72 in 1979	3 36.30 in 1954
75.6 in 1990	71.0 in 1958	4 68.82 in 2017	4 37.36 in 1985
<b>5 75.3 in 2021</b>	71.0 in 1940	5 67.13 in 1994	5 37.80 in 1967
6 75.2 in 2017	6 71.2 in 1970	6 66.92 in 2005	6 38.06 in 1962
7 75.2 in 1994	7 71.4 in 1960	7 66.58 in 2002	7 38.26 in 2000
8 74.8 in 2016	71.4 in 1920	8 66.13 in 2004	8 38.29 in 1972
74.8 in 1991	9 71.5 in 1963	9 65.42 in 1960	9 39.43 in 1990
10 74.7 in 2018	10 71.6 in 2010	10 63.79 in 1919	10 39.57 in 1984
			39.57 in 1981
			39.57 in 1942
		...	...
		<b>68 48.54 in 2021</b>	<b>39 48.54 in 2021</b>

Normal Temperature for the Year at LLDF1 = 73.9°  
 Normal Rainfall for the Year at LLDF1 = 56.82 inches

-----

**WINTER HAVEN AREA** (Records began in March 1941):

Warmest Decembers	Coollest Decembers	Wettest Decembers	Driest Decembers
1 72.4 in 2015	1 52.7 in 2010	1 12.52 in 2002	1 0.03 in 1987
2 70.8 in 1971	2 55.5 in 1963	2 9.79 in 1997	0.03 in 1984
<b>3 70.3 in 2021</b>	3 57.4 in 1989	3 6.91 in 2018	3 0.07 in 1990
4 69.5 in 1948	4 59.1 in 1962	4 6.44 in 1983	4 0.21 in 1956
5 69.2 in 2016	59.1 in 1960	5 5.35 in 1989	5 0.23 in 1962
6 68.4 in 1946	6 59.2 in 1968	6 4.75 in 1991	6 0.29 in 1944
7 68.1 in 1984	7 59.3 in 1950	7 3.88 in 1947	7 0.33 in 2011
8 68.0 in 2007	8 59.8 in 1944	8 3.87 in 1950	8 0.40 in 1991
68.0 in 1991	9 59.9 in 2000	9 3.77 in 1941	0.40 in 1968
68.0 in 1986	10 60.1 in 2003	10 3.63 in 1969	10 0.47 in 1943
	60.1 in 1952		...
			<b>26 1.06 in 2021</b>

Normal Temperature for December at GIF = 64.6°

Normal Rainfall for December at GIF = 2.68 inches

---

Warmest Years	Coollest Years	Wettest Years	Driest Years
1 76.6 in 2019	1 70.2 in 1968	1 73.28 in 1959	1 30.35 in 2000
2 76.2 in 2015	2 71.1 in 1981	2 69.61 in 1960	2 31.95 in 2006
3 76.1 in 2020	3 71.2 in 1963	3 65.94 in 1957	3 32.73 in 2009
4 75.8 in 1989	4 71.4 in 1977	4 65.09 in 1947	4 35.26 in 1985
5 75.7 in 1991	71.4 in 1969	5 64.90 in 1948	5 36.78 in 2007
<b>6 75.3 in 2021</b>	6 71.6 in 2010	6 63.55 in 1953	6 36.89 in 1980
7 75.1 in 2018	71.6 in 1958	7 62.94 in 1983	<b>7 39.02 in 2021</b>
75.1 in 2017	8 71.9 in 1962	8 62.73 in 1994	8 39.06 in 2017
9 75.0 in 1990	71.9 in 1960	9 62.10 in 1982	9 39.51 in 1972
10 74.7 in 2016	10 72.0 in 1966	10 61.77 in 2002	10 39.81 in 1961

Normal Temperature for the Year at GIF = 74.6°

Normal Rainfall for the Year at GIF = 46.12 inches

**BARTOW** (Records began in June 1892):

Warmest Decembers	Coollest Decembers	Wettest Decembers	Driest Decembers
1 72.4 in 2015	1 53.2 in 2010	1 13.31 in 2002	1 0.00 in 1906
2 71.0 in 2013	2 54.1 in 1910	2 11.38 in 1983	2 0.05 in 1932
3 69.2 in 1948	3 54.4 in 1903	3 10.70 in 1997	3 0.08 in 1933
4 69.0 in 2016	4 55.9 in 1915	4 8.25 in 1905	4 0.15 in 1944
69.0 in 2001	5 57.1 in 1909	5 6.45 in 2018	5 0.23 in 1962
69.0 in 1971	6 57.3 in 1963	6 6.35 in 1900	6 0.24 in 1987
<b>7 68.5 in 2021</b>	7 57.4 in 1954	7 5.50 in 1925	0.24 in 1956
8 68.4 in 1998	8 57.6 in 1989	8 5.25 in 1942	8 0.27 in 1990
9 68.2 in 2006	9 58.4 in 1960	9 5.14 in 1930	9 0.28 in 1984
10 67.8 in 1986	10 59.0 in 2020	10 5.07 in 1989	10 0.29 in 1946
			...
		<b>86 1.05 in 2021</b>	<b>43 1.05 in 2021</b>

Normal Temperature for December at BARF1 = 63.6°  
 Normal Rainfall for December at BARF1 = 2.16 inches

-----

Warmest Years	Coollest Years	Wettest Years	Driest Years
1 76.0 in 2014	1 70.8 in 1901	1 83.44 in 1959	1 34.10 in 2007
2 74.9 in 1998	2 71.2 in 1968	2 77.99 in 1983	2 35.87 in 2000
3 74.8 in 1948	71.2 in 1914	3 73.96 in 1930	3 36.43 in 1927
4 74.6 in 2020	4 71.3 in 1896	4 73.85 in 1960	4 37.19 in 1950
74.6 in 2012	5 71.5 in 1893	5 73.72 in 1957	5 37.51 in 2006
6 74.5 in 2019	6 71.6 in 1976	6 73.58 in 1947	6 40.72 in 1990
7 74.4 in 2017	71.6 in 1970	7 71.44 in 2002	7 41.00 in 1916
<b>8 74.1 in 2021</b>	71.6 in 1963	8 71.29 in 1924	8 41.41 in 1955
74.1 in 1997	71.6 in 1913	9 69.90 in 1903	9 42.29 in 1999
74.1 in 1982	10 71.9 in 1981	10 67.17 in 1933	10 42.48 in 1974
	71.9 in 1979	...	...
	71.9 in 1956	<b>77 49.52 in 2021</b>	<b>43 49.52 in 2021</b>
	71.9 in 1912		

Normal Temperature for the Year at BARF1 = 73.1°  
 Normal Rainfall for the Year at BARF1 = 50.88 inches

-----



**SARASOTA-BRADENTON AREA** (Records began in January 1911):

Warmest Decembers	Coolest Decembers	Wettest Decembers	Driest Decembers
1 72.8 in 2015	1 53.0 in 2010	1 11.94 in 1997	1 0.00 in 1933
2 71.2 in 1931	2 54.9 in 1935	2 11.63 in 2002	2 0.03 in 1949
3 69.8 in 1971	3 56.8 in 1930	3 8.10 in 2018	3 0.17 in 2011
4 69.5 in 2006	4 57.4 in 1963	4 6.86 in 1914	4 0.19 in 1962
<b>5 69.3 in 2021</b>	5 58.0 in 1917	5 6.71 in 1977	5 0.21 in 2013
69.3 in 2016	6 58.4 in 1915	6 6.23 in 1983	6 0.24 in 1984
7 69.1 in 2013	7 58.7 in 1989	7 6.21 in 1930	7 0.28 in 1923
8 68.8 in 2007	58.7 in 1976	8 5.80 in 1958	8 0.31 in 1938
9 68.7 in 2019	9 59.0 in 1944	9 5.72 in 1913	9 0.34 in 1946
10 68.6 in 1948	10 59.4 in 1985	10 5.58 in 1953	10 0.36 in 1932
	59.4 in 1980		...
			<b>33 0.92 in 2021</b>
			0.92 in 2007
			0.92 in 1988
			0.92 in 1943

Normal Temperature for December at SRQ = 65.2°

Normal Rainfall for December at SRQ = 2.33 inches

---

Warmest Years	Coolest Years	Wettest Years	Driest Years
1 76.3 in 2020	1 70.6 in 1977	1 82.98 in 1957	1 29.45 in 1944
2 76.2 in 2019	70.6 in 1976	2 78.59 in 1959	2 31.51 in 2007
3 75.3 in 2016	70.6 in 1940	3 78.33 in 1997	3 31.98 in 1956
4 75.2 in 2015	4 70.9 in 2010	4 77.50 in 1912	4 32.19 in 1951
75.2 in 1990	70.9 in 1981	5 73.49 in 1960	5 33.23 in 2009
<b>6 74.8 in 2021</b>	70.9 in 1968	6 72.21 in 1922	6 34.00 in 1923
7 74.6 in 2017	70.9 in 1930	7 68.52 in 1943	7 34.32 in 2008
8 74.5 in 1994	8 71.0 in 1931	8 68.02 in 1983	8 36.97 in 1950
9 74.4 in 2018	71.0 in 1915	9 67.46 in 1958	9 37.45 in 2000
74.4 in 2012	10 71.1 in 1928	10 67.01 in 1928	10 38.87 in 1973
74.4 in 2007			...
			<b>33 46.71 in 2021</b>

Normal Temperature for the Year at SRQ = 74.1°

Normal Rainfall for the Year at SRQ = 49.05 inches

**VENICE** (Records began in May 1955):

Warmest Decembers	Coollest Decembers	Wettest Decembers	Driest Decembers
1 73.1 in 1987	1 54.8 in 2010	1 9.48 in 1997	1 0.04 in 2016
2 72.9 in 2015	2 57.7 in 1989	2 7.39 in 2018	2 0.07 in 2011
3 70.9 in 1971	3 57.9 in 1963	3 6.50 in 1983	3 0.10 in 2014
4 70.7 in 2016	4 59.4 in 1976	4 6.00 in 2002	4 0.13 in 2013
<b>5 70.2 in 2021</b>	5 59.4 in 1960	5 5.34 in 2009	5 0.13 in 1991
6 69.3 in 1998	6 59.7 in 1981	6 5.25 in 1986	6 0.18 in 1987
7 69.1 in 2011	7 60.1 in 2003	7 4.94 in 2003	7 0.33 in 1962
8 68.6 in 1982	8 60.1 in 1962	8 4.16 in 1958	8 0.44 in 1984
9 68.3 in 2006	9 60.2 in 1975	9 4.12 in 1989	<b>9 0.50 in 2021</b>
10 68.2 in 2001	10 60.5 in 1973	10 3.85 in 1979	10 0.60 in 2001

Normal Temperature for December at VNCF1 = 64.9°

Normal Rainfall for December at VNCF1 = 2.31 inches

---

Warmest Years	Coollest Years	Wettest Years	Driest Years
1 76.0 in 2012	1 70.9 in 1981	1 75.08 in 1995	1 29.07 in 1990
2 75.9 in 2019	2 71.2 in 1977	2 74.15 in 1957	2 32.46 in 2007
3 75.7 in 2015	3 71.8 in 1962	3 73.28 in 1959	3 35.52 in 1985
4 75.7 in 1998	4 71.9 in 1978	4 72.40 in 1983	4 36.50 in 1961
5 75.6 in 2011	5 72.0 in 1969	5 65.46 in 2003	5 36.69 in 1956
6 75.3 in 2020	6 72.0 in 1960	6 63.35 in 2005	6 37.23 in 1981
7 75.1 in 1997	7 72.1 in 1966	7 63.13 in 1992	<b>7 38.45 in 2021</b>
8 75.1 in 1994	8 72.1 in 1963	8 62.98 in 1969	8 38.50 in 2009
9 75.0 in 2017	9 72.1 in 1956	9 61.25 in 2017	9 39.49 in 2019
<b>10 74.5 in 2021</b>	10 72.3 in 1970	10 59.17 in 1982	10 40.51 in 2000
74.5 in 2018			
74.5 in 2016			

Normal Temperature for the Year at VNCF1 = 73.7°

Normal Rainfall for the Year at VNCF1 = 51.27 inches

**MYAKKA RIVER STATE PARK** (Temperature records began in March 1956  
and Rainfall records began in Sep 1943):

Warmest Decembers	Coolest Decembers	Wettest Decembers	Driest Decembers
1 73.3 in 2015	1 53.4 in 2010	1 10.89 in 1997	1 0.03 in 1949
2 70.8 in 2016	2 55.9 in 1969	2 9.65 in 2002	2 0.10 in 1991
3 69.4 in 2013	3 57.0 in 1989	3 8.20 in 1983	3 0.16 in 1961
4 69.3 in 1998	4 57.2 in 1960	4 7.59 in 2018	4 0.17 in 2011
5 69.2 in 1971	5 57.3 in 1962	5 6.32 in 1958	5 0.19 in 1987
6 69.1 in 2006	6 58.7 in 1968	6 6.06 in 2009	6 0.22 in 2013
7 68.7 in 2007	7 59.1 in 1957	7 5.97 in 1977	0.22 in 1962
8 68.1 in 1982	8 59.9 in 2002	8 5.48 in 2003	8 0.25 in 1956
9 68.0 in 1991	9 60.0 in 2020	9 5.00 in 2015	9 0.29 in 1943
10 67.9 in 1992	60.0 in 1973	10 4.23 in 1989	10 0.36 in 1984
67.9 in 1986			...
12 67.6 in 2001			<b>26 0.95 in 2021</b>
13 67.5 in 1978			
14 67.0 in 2011			
<b>15 66.9 in 2021</b>			
66.9 in 1978			
66.9 in 1978			

Normal Temperature for December at MKCF1 = 64.8°  
Normal Rainfall for December at MKCF1 = 2.51 inches

Warmest Years	Coolest Years	Wettest Years	Driest Years
1 76.0 in 2015	1 70.6 in 1962	1 82.31 in 1995	1 36.97 in 1961
2 75.5 in 2019	2 71.3 in 1958	2 80.36 in 1983	2 38.15 in 1956
3 75.2 in 1997	3 71.6 in 1970	3 78.82 in 2018	3 38.24 in 1955
4 75.0 in 1990	71.6 in 1960	4 77.59 in 1959	4 39.15 in 1944
5 74.9 in 2017	5 71.8 in 2010	5 76.72 in 1982	5 42.29 in 1950
6 74.8 in 1982	71.8 in 1977	6 76.60 in 2003	6 42.54 in 1946
7 74.6 in 2016	7 72.1 in 1981	7 76.52 in 1998	7 44.03 in 1985
74.6 in 1994	72.1 in 1976	8 76.04 in 1997	8 44.10 in 1986
9 74.5 in 2018	72.1 in 1973	9 75.62 in 1957	<b>9 44.36 in 2021</b>
74.5 in 1999	10 72.2 in 1988	10 71.72 in 2017	10 45.21 in 2000
...	...		
<b>25 73.0 in 2021</b>	<b>19 73.0 in 2021</b>		

Normal Temperature for the Year at MKCF1 = 73.6°  
Normal Rainfall for the Year at MKCF1 = 61.07 inches

**WAUCHULA 2 N** (Records began in January 1933):

Warmest Decembers		Coolest Decembers		Wettest Decembers		Driest Decembers	
1	72.0 in 2015	1	50.0 in 2010	1	7.89 in 2002	1	0.00 in 2001
2	70.0 in 1971	2	54.4 in 2009	2	6.29 in 1997	2	0.11 in 1938
3	69.8 in 2007	3	55.7 in 1935	3	6.10 in 2018	3	0.12 in 1956
4	68.7 in 2016	4	56.8 in 1963	4	5.57 in 2009	4	0.14 in 1933
	68.7 in 1948	5	57.0 in 2003	5	5.51 in 1986	5	0.20 in 2011
6	68.4 in 1940	6	58.5 in 1989	6	4.83 in 1977	6	0.21 in 1934
7	67.8 in 2006	7	58.6 in 2020	7	4.77 in 1958	7	0.22 in 2013
8	67.7 in 1986		58.6 in 2002	8	4.20 in 1940	8	0.28 in 1991
9	67.6 in 1946		58.6 in 1954	9	4.13 in 1950	9	0.31 in 2014
10	67.5 in 1941	10	58.7 in 2005	10	4.11 in 1989		0.31 in 1949
11	67.4 in 1978			...		...	
12	67.3 in 1984			<b>49</b>	<b>1.23 in 2021</b>	<b>40</b>	<b>1.23 in 2021</b>
	67.3 in 1982						
<b>14</b>	<b>67.2 in 2021</b>						

Normal Temperature for December at WAUF1 = 63.0°  
 Normal Rainfall for December at WAUF1 = 2.13 inches

-----

Warmest Years		Coolest Years		Wettest Years		Driest Years	
1	74.9 in 1990	1	70.8 in 1996	1	83.48 in 1953	1	29.56 in 2000
2	74.5 in 2008	2	70.9 in 2014	2	82.10 in 1947	2	36.59 in 2007
	74.5 in 1948	3	71.3 in 1954	3	69.13 in 1959	3	36.66 in 1981
4	74.4 in 2015	4	71.4 in 1981	4	68.89 in 1939	4	36.93 in 1961
5	74.3 in 1991		71.4 in 1968	5	67.34 in 1983	5	40.25 in 1989
	74.3 in 1933		71.4 in 1956	6	66.05 in 1998	6	40.27 in 1999
7	74.2 in 2009	7	71.5 in 2012	7	65.77 in 1997	7	41.39 in 2006
8	74.1 in 1989		71.5 in 2011	8	63.91 in 1960	8	42.06 in 1967
9	74.0 in 2019	9	71.6 in 1976	9	62.98 in 1943	9	43.58 in 1950
10	73.9 in 2020	10	71.7 in 2013	10	62.84 in 2017	10	43.66 in 1966
	73.9 in 2017		71.7 in 1999			...	
	73.9 in 1946		71.7 in 1940			<b>30</b>	<b>49.27 in 2021</b>
...							
<b>24</b>	<b>73.1 in 2021</b>						
	73.1 in 2018						
	73.1 in 1967						
	73.1 in 1959						
	73.1 in 1942						

Normal Temperature for the Year at WAUF1 = 72.4°  
 Normal Rainfall for the Year at WAUF1 = 52.00 inches

-----

**ARCADIA** (Records began in November 1899):

Warmest Decembers	Coollest Decembers	Wettest Decembers	Driest Decembers
1 72.1 in 2015	1 50.9 in 2010	1 6.85 in 1905	1 0.06 in 1932
2 70.9 in 1931	2 53.9 in 1989	2 6.27 in 1983	0.06 in 1926
3 69.7 in 1971	3 56.0 in 1910	3 5.73 in 1997	3 0.07 in 1933
4 68.9 in 2016	4 56.1 in 1935	4 5.71 in 2002	4 0.10 in 1962
5 68.6 in 2013	5 57.2 in 1903	5 5.53 in 1986	0.10 in 1938
68.6 in 1948	6 57.8 in 1930	6 5.52 in 1977	6 0.12 in 1949
7 68.3 in 1912	7 58.2 in 2003	7 5.10 in 1941	7 0.14 in 2011
8 68.0 in 1940	8 58.6 in 1985	8 4.73 in 1925	8 0.16 in 2000
9 67.6 in 1951	9 58.8 in 1980	9 4.58 in 2009	9 0.18 in 2005
67.6 in 1946	58.8 in 1962	10 4.44 in 2003	0.18 in 1959

Average Temperature for Dec 2021 = Not Available Yet  
Normal Temperature for December at ARCF1 = 63.1°

Total Rainfall for Dec 2021 = Not Available Yet  
Normal Rainfall for December at ARCF1 = 1.82 inches

---

Warmest Years	Coollest Years	Wettest Years	Driest Years
1 74.9 in 1948	1 69.7 in 2010	1 80.11 in 1947	1 30.75 in 1955
2 74.7 in 1912	2 70.5 in 1968	2 78.11 in 1982	2 33.45 in 1932
3 74.5 in 2015	70.5 in 1910	3 72.24 in 1959	3 34.16 in 1989
4 74.4 in 1911	4 71.0 in 1970	4 67.99 in 1979	4 34.30 in 1961
5 74.2 in 2020	5 71.1 in 1969	5 67.13 in 2005	5 35.90 in 1911
74.2 in 1913	6 71.2 in 1996	6 66.42 in 1986	6 36.79 in 1956
7 74.1 in 1949	71.2 in 1988	7 66.41 in 1952	7 37.06 in 1980
8 74.0 in 2019	71.2 in 1977	8 65.72 in 1957	8 37.33 in 1976
74.0 in 1998	71.2 in 1976	9 65.63 in 1924	9 37.52 in 2006
10 73.9 in 1929	10 71.4 in 1901	10 65.46 in 1930	10 38.31 in 2007

Average Temperature for 2021 = Not Available Yet  
Normal Temperature for the Year at ARCF1 = 72.2°

Total Rainfall for 2021 = Not Available Yet  
Normal Rainfall for the Year at ARCF1 = 53.92 inches

**ARCHBOLD BIO STN** (Records began in January 1969):

Warmest Decembers	Coollest Decembers	Wettest Decembers	Driest Decembers
1 73.4 in 2015	1 52.1 in 2010	1 7.60 in 1997	1 0.22 in 1981
2 70.5 in 2016	2 56.3 in 1989	2 6.22 in 2002	2 0.27 in 2005
3 69.1 in 1971	3 57.8 in 1969	3 4.90 in 1977	3 0.31 in 1970
4 69.0 in 2006	4 59.1 in 2003	4 4.16 in 1978	4 0.38 in 2000
5 68.4 in 2013	5 59.2 in 1980	5 3.83 in 1994	<b>5 0.40 in 2021</b>
<b>6 67.3 in 2021</b>	6 59.4 in 1993	6 3.75 in 2003	6 0.42 in 2013
7 67.2 in 1986	7 60.1 in 1985	7 3.35 in 1986	7 0.43 in 2011
8 67.0 in 2007	8 60.3 in 2020	8 3.10 in 2020	8 0.51 in 1982
9 66.7 in 1998	9 60.5 in 2005	9 3.04 in 2015	9 0.54 in 2016
10 66.3 in 1978	60.5 in 2002	10 2.93 in 1974	10 0.55 in 2001

Normal Temperature for December at ACHF1 = 64.4°  
 Normal Rainfall for December at ACHF1 = 2.03 inches

---

Warmest Years	Coollest Years	Wettest Years	Driest Years
1 75.4 in 2015	1 70.1 in 2010	1 72.61 in 2002	1 27.31 in 2000
2 74.3 in 2020	2 70.6 in 1981	2 66.06 in 2004	2 33.00 in 2007
74.3 in 2017	3 70.7 in 1983	3 64.09 in 1969	3 36.26 in 1980
4 74.1 in 2019	4 71.0 in 1970	4 63.49 in 2013	4 37.46 in 2009
5 74.0 in 1990	71.0 in 1969	5 62.23 in 1992	5 41.45 in 1971
6 73.9 in 2016	6 71.1 in 2000	6 61.73 in 2015	6 43.02 in 1975
7 73.7 in 1991	71.1 in 1988	7 61.07 in 1982	7 43.84 in 1996
73.7 in 1975	71.1 in 1984	8 60.89 in 1979	8 43.97 in 1985
<b>9 73.3 in 2021</b>	9 71.2 in 1996	9 60.33 in 2001	9 45.03 in 1981
73.3 in 2018	10 71.3 in 1987	10 60.10 in 1999	10 45.06 in 1972
	71.3 in 1977	...	
	71.3 in 1976	<b>19 56.51 in 2021</b>	

Normal Temperature for the Year at ACHF1 = 72.9°  
 Normal Rainfall for the Year at ACHF1 = 54.23 inches

---

**PUNTA GORDA AREA** (Records began in May 1914):

Warmest Decembers	Coollest Decembers	Wettest Decembers	Driest Decembers
1 72.8 in 2015	1 54.0 in 2010	1 6.88 in 2002	1 0.00 in 1933
2 72.5 in 1931	2 57.6 in 1935	2 6.50 in 1925	2 0.07 in 1938
3 71.4 in 1948	3 58.0 in 1963	3 6.47 in 1997	3 0.09 in 1926
4 70.4 in 2013	4 58.4 in 1917	4 5.42 in 1995	4 0.12 in 1932
70.4 in 1971	5 59.9 in 2003	5 4.95 in 1958	5 0.15 in 2014
70.4 in 1946	6 60.1 in 1989	6 4.92 in 1977	6 0.17 in 2011
<b>7 70.0 in 2021</b>	60.1 in 1969	7 4.63 in 2009	7 0.25 in 1981
70.0 in 2016	8 60.3 in 1968	8 4.49 in 1967	8 0.27 in 1928
70.0 in 1932	9 60.6 in 1975	9 4.31 in 1969	9 0.28 in 1991
10 69.7 in 1951	10 60.7 in 1930	10 4.00 in 1986	10 0.34 in 2000
	60.7 in 1915		0.34 in 1962
			...
			<b>24 0.57 in 2021</b>
			0.57 in 1924

Normal Temperature for December at PGD = 65.8°

Normal Rainfall for December at PGD = 1.99 inches

---

Warmest Years	Coollest Years	Wettest Years	Driest Years
1 76.8 in 1948	1 71.5 in 1968	1 88.10 in 1947	1 30.01 in 2007
2 76.4 in 1946	2 71.6 in 2010	2 87.09 in 1959	2 30.07 in 1927
3 75.9 in 2020	3 71.8 in 1969	3 81.06 in 1995	3 32.85 in 1990
4 75.8 in 1949	71.8 in 1915	4 65.33 in 1922	4 35.07 in 1955
5 75.6 in 2018	5 71.9 in 1976	5 64.87 in 2003	5 36.18 in 2000
75.6 in 1990	71.9 in 1970	6 64.43 in 1983	6 36.87 in 1976
75.6 in 1945	7 72.3 in 1940	7 63.97 in 1928	7 37.41 in 1923
8 75.5 in 2015	8 72.4 in 1977	8 63.30 in 2018	8 38.03 in 1920
<b>9 75.4 in 2021</b>	9 72.6 in 1942	9 62.41 in 2016	9 38.11 in 1971
10 75.3 in 1994	10 72.7 in 1930	10 62.02 in 1958	10 39.17 in 1956
75.3 in 1951		...	...
		<b>40 52.03 in 2021</b>	<b>49 52.03 in 2021</b>
		52.03 in 1988	52.03 in 1988

Normal Temperature for the Year at PGD = 74.3°

Normal Rainfall for the Year at PGD = 52.97 inches

**FORT MYERS AREA** (Records began in January 1902):

Warmest Decembers	Coollest Decembers	Wettest Decembers	Driest Decembers
1 73.6 in 2015	1 56.7 in 2010	1 7.04 in 1925	1 Trace in 1956
2 73.3 in 2016	2 58.4 in 1935	2 6.21 in 1905	2 0.01 in 1924
3 72.8 in 1931	3 58.5 in 1903	3 5.71 in 2019	3 0.02 in 1984
<b>4 72.6 in 2021</b>	4 58.8 in 1910	4 5.46 in 1997	0.02 in 1906
5 72.3 in 1971	5 59.3 in 1963	5 5.42 in 1940	5 0.05 in 2014
6 71.5 in 2013	6 60.3 in 1950	6 5.26 in 1986	6 0.09 in 2005
7 71.2 in 2007	7 60.5 in 1954	7 5.16 in 1979	7 0.13 in 1933
8 70.9 in 2006	8 60.8 in 1989	8 4.68 in 2003	8 0.14 in 1951
9 70.7 in 2019	9 61.0 in 1969	9 4.35 in 1978	9 0.15 in 1926
10 70.5 in 1948	61.0 in 1930	10 3.95 in 1969	10 0.16 in 1968
			...
			<b>35 0.54 in 2021</b>

Normal Temperature for December at FMY = 67.3°

Normal Rainfall for December at FMY = 1.90 inches

-----

Warmest Years	Coollest Years	Wettest Years	Driest Years
1 77.1 in 2020	1 71.2 in 1910	1 80.17 in 1947	1 32.83 in 1964
2 77.0 in 2015	2 71.8 in 1903	2 77.35 in 1922	2 32.85 in 1927
77.0 in 1990	3 72.1 in 1904	3 74.85 in 1983	3 33.93 in 1944
<b>4 76.9 in 2021</b>	4 72.3 in 1958	4 74.75 in 1912	4 34.28 in 1956
5 76.8 in 2019	72.3 in 1902	5 74.46 in 2005	5 35.00 in 1988
6 76.7 in 1997	6 72.4 in 1977	6 73.14 in 1995	6 36.19 in 1950
7 76.6 in 1994	72.4 in 1917	7 71.94 in 1969	7 38.50 in 1907
8 76.5 in 1995	8 72.5 in 1976	8 70.64 in 2003	8 39.88 in 2009
9 76.4 in 1991	72.5 in 1906	9 70.29 in 1968	9 41.68 in 1918
10 76.2 in 2018	10 72.8 in 1983	10 69.01 in 1987	10 41.72 in 1938
76.2 in 2012	72.8 in 1969	...	...
	72.8 in 1940	<b>52 54.13 in 2021</b>	<b>68 54.13 in 2021</b>
	72.8 in 1909		

Normal Temperature for the Year at FMY = 75.4°

Normal Rainfall for the Year at FMY = 57.41 inches

-----

For more Climate information visit our web site at the following link:  
<https://www.weather.gov/tampabay> and then go to the Climate and Past  
 Weather drop down menu above the graphical forecast images.