



# NOAA - National Weather Service

Tampa Bay Area

2525 14th Avenue SE, Ruskin, Florida 33570

813-645-2323 <https://weather.gov/tampabay>

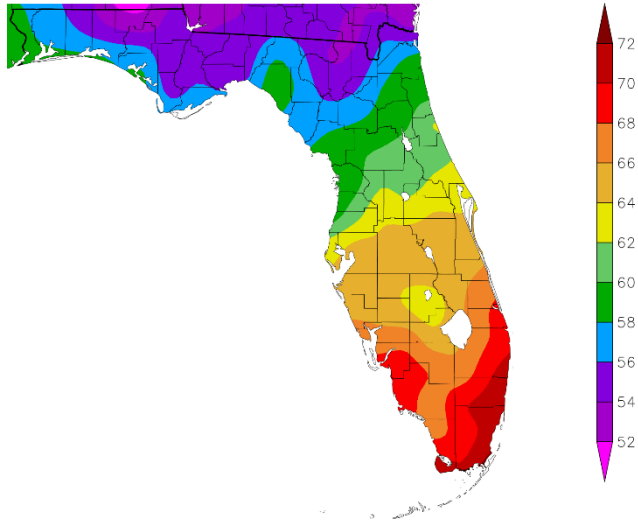
## December and 2022 Climate Summary for West Central and Southwest Florida

December 2022 started out warm and dry, then during mid-month the pattern changed with a series of cold fronts moving through preceded and accompanied by showers and thunderstorms. One of these fronts was an arctic cold front which moved through the region shortly before the Christmas holiday weekend setting the area up for one of the Top Three Coldest Christmas Eve/Christmas Days on record. Warmer temperatures slowly returned during the last week with temperatures returning to above normal. Overall, for December, temperatures averaged slightly below to slightly above normal.

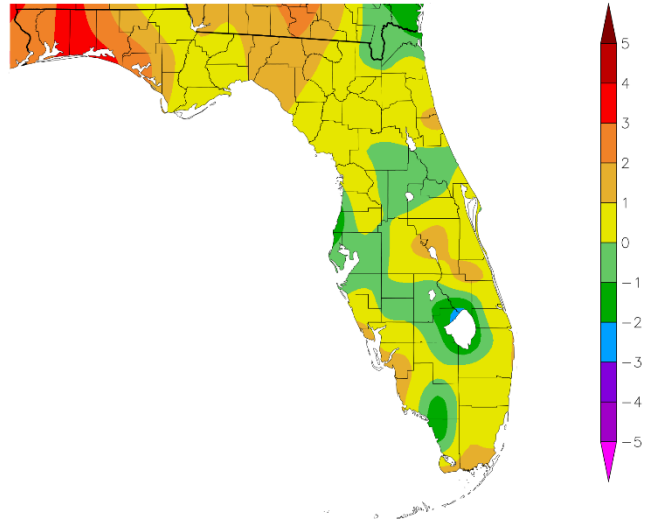
### DECEMBER TEMPERATURE (°F) at sites available so far:

Location	December 2022 Rank	Avg Temp	Normal Dec Temp	Dep fm Normal	Records Began
Fort Myers Area	24th Warmest (tie)	68.8°	67.3°	+1.5°	Jan 1902
Venice	24th Warmest	66.1°	64.9°	+1.2°	May 1955
Punta Gorda Area	45th Warmest (tie)	66.0°	65.8°	+0.2°	May 1914
Sarasota-Bradenton Area	65th Coolest (tie)	65.1°	65.2°	-0.1°	Jan 1911
Plant City	83rd Coolest	64.7°	65.0°	-0.3°	Sep 1892
Tampa Area	90th Coolest	64.7°	64.9°	-0.2°	Apr 1890
Archbold Bio Stn	23rd Warmest	64.4°	64.4°	0.0°	Jan 1969
Lakeland Area	59th Coolest (tie)	64.0°	64.8°	-0.8°	Jan 1915
St Petersburg Area	50th Coolest	63.9°	65.1°	-1.2°	Aug 1914
Bartow	35th Warmest	63.8°	63.6°	+0.2°	Jun 1892
St. Leo	61st Coolest (tie)	61.3°	62.1°	-0.8°	Apr 1895
Brooksville Area	67th Warmest	60.6°	60.3°	+0.3°	Jan 1892
Tarpon Springs	50th Coolest	60.5°	62.4°	-1.9°	Jan 1892
Inverness 3 SE	29th Warmest	60.0°	59.0°	+1.0°	Jul 1948
Chiefland 5 ESE	22nd Warmest	58.8°	57.4°	+1.4°	Jul 1956

Temperature (F)  
12/1/2022 - 12/31/2022



Departure from Normal Temperature (F)  
12/1/2022 - 12/31/2022



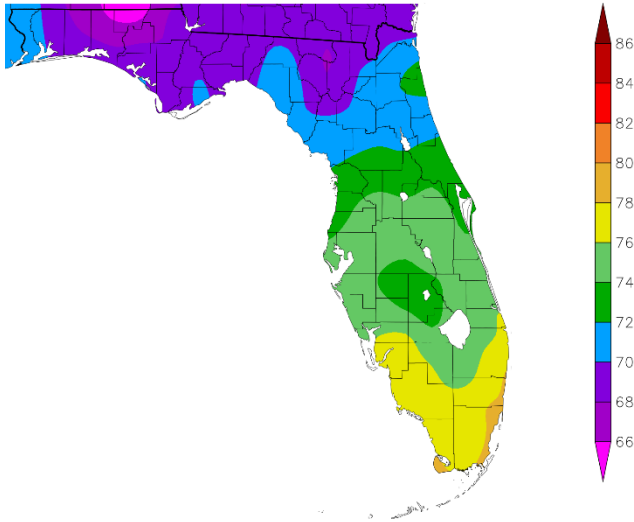
Graphics Source: NOAA Regional Climate Centers

As for 2022, temperatures ended up mostly above normal for the year with many sites in the Top Ten Warmest.

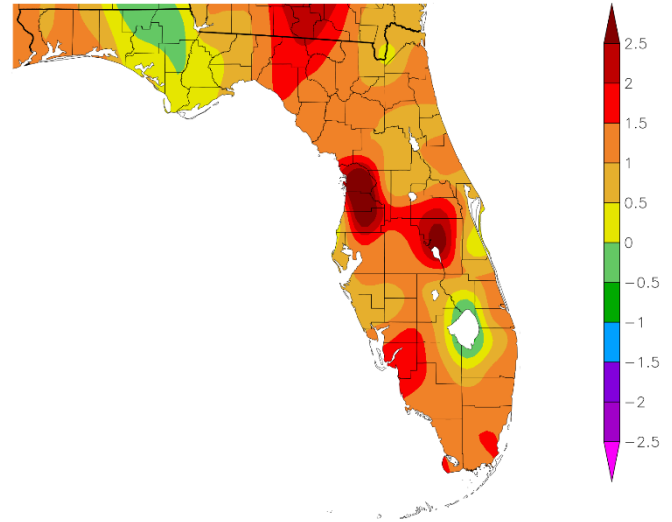
**2022 YEARLY AVERAGE TEMPERATURE (°F) at sites available so far:**

Location	2022 Rank	2022 Avg Temp	Normal Ann Temp	Dep fm Normal	Records Began
Fort Myers Area	1st Warmest	77.6°	75.4°	+2.2°	Jan 1902
Tampa Area	1st Warmest	76.4°	74.5°	+1.9°	Apr 1890
Plant City	4th Warmest	75.7°	74.3°	+1.4°	Sep 1892
Punta Gorda Area	9th Warmest (tie)	75.4°	74.3°	+1.1°	May 1914
St Petersburg Area	12th Warmest (tie)	75.4°	74.7°	+0.7°	Aug 1914
Lakeland Area	8th Warmest	75.0°	73.9°	+1.1°	Jan 1915
Sarasota-Bradenton Area	7th Warmest	74.7°	74.1°	+0.6°	Jan 1911
Venice	10th Warmest	74.7°	73.7°	+1.0°	May 1955
Bartow	11th Warmest (tie)	74.0°	73.1°	+0.9°	Jun 1892
Archbold Bio Stn	6th Warmest (tie)	73.9°	72.9°	+1.0°	Jan 1969
St. Leo	27th Warmest (tie)	72.9°	71.9°	+1.0°	Apr 1895
Inverness 3 SE	5th Warmest	72.4°	69.8°	+2.6°	Jul 1948
Tarpon Springs	55th Coolest (tie)	72.1°	72.9°	-0.8°	Jan 1892
Chiefland 5 ESE	8th Warmest	70.5°	69.2	+1.3°	Jul 1956

Temperature (F)  
1/1/2022 - 12/31/2022



Departure from Normal Temperature (F)  
1/1/2022 - 12/31/2022

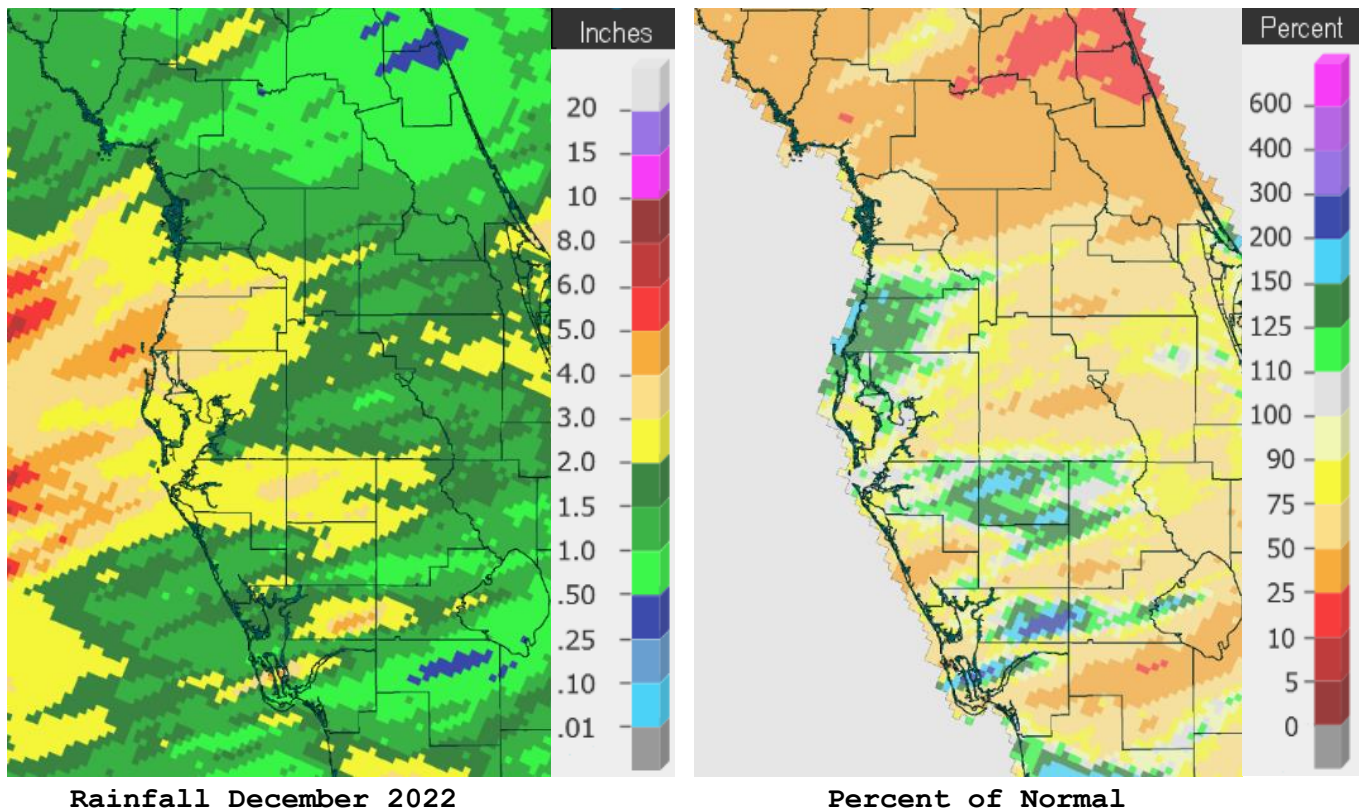


Graphics Source: NOAA Regional Climate Centers

Taking a look at rainfall, December saw varying amounts with a few areas above normal while most of the region was below normal.

**DECEMBER RAINFALL (inches) at sites available so far:**

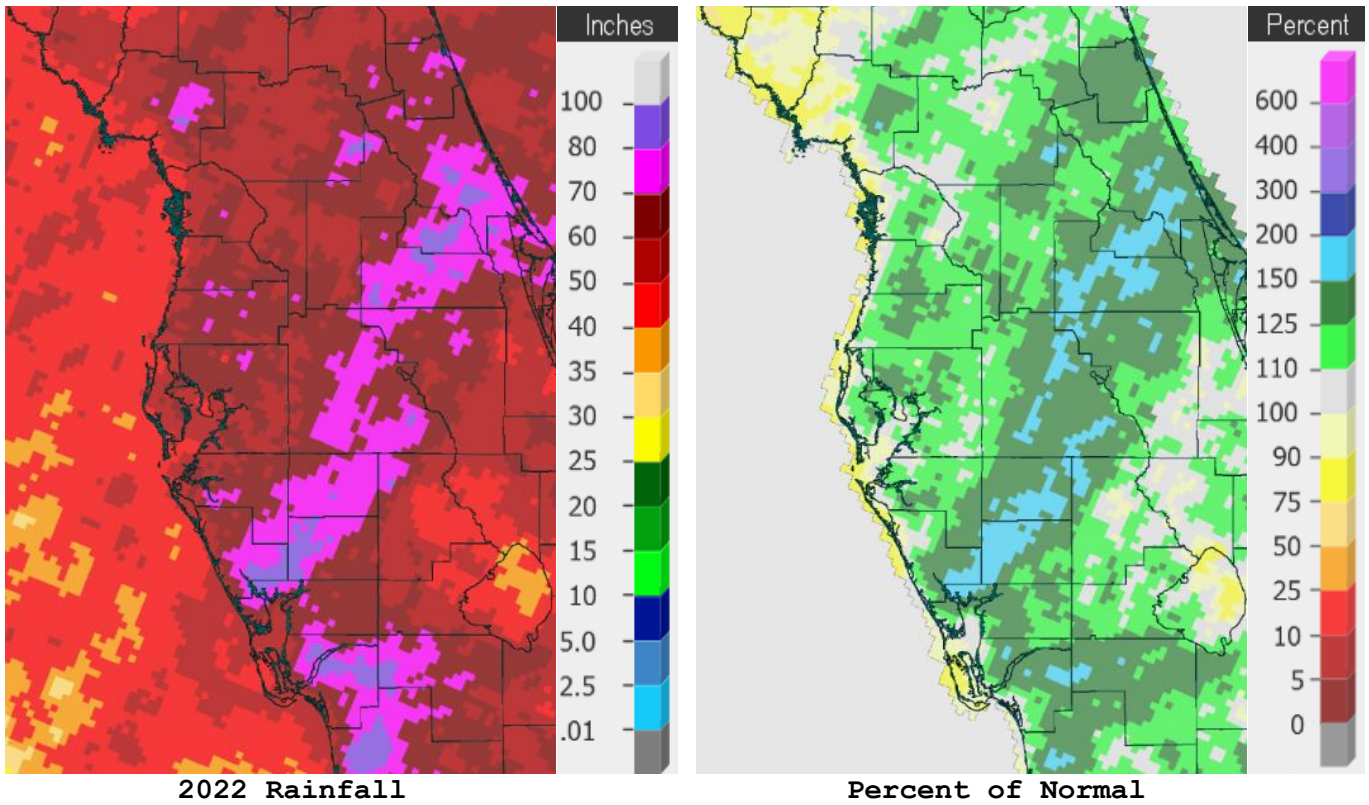
Location	December 2022 Rank	Rain Total	Normal Dec Rain	Dep fm Normal	Records Began
Tarpon Springs	31st Wettest	3.76	2.74	+1.02	Jan 1892
St. Leo	36th Wettest	3.03	2.53	+0.50	Apr 1895
Sarasota-Bradenton Area	33rd Wettest (tie)	2.63	2.33	+0.30	Jan 1911
Tampa Area	95th Driest	2.35	2.56	-0.21	Apr 1890
St. Petersburg Area	65th Driest	2.14	2.39	-0.25	Aug 1914
Lakeland Area	70th Driest (tie)	2.12	2.61	-0.49	Jan 1915
Plant City	7xth Driest	1.94	2.54	-0.60	Sep 1892
Winter Haven Area	45th Driest (tie)	1.79	2.68	-0.89	Mar 1941
Chiefland 5 ESE	18th Driest (tie)	1.41	3.25	-1.84	Jul 1956
Inverness 3 SE	25th Driest	1.22	2.48	-1.26	Jul 1948
Archbold Bio Stn	20th Driest	1.14	2.03	-0.89	Jan 1969
Fort Myers Area	61st Driest (tie)	1.10	1.90	-0.80	Jan 1902
Venice	28th Driest	1.07	2.31	-1.24	May 1955
Bartow	43rd Driest (tie)	1.05	2.16	-1.11	Jun 1892



As for 2022, most of the area was above normal thanks to Hurricane Ian and Nicole, with only a small part of the northern Nature Coast below normal.

**2022 RAINFALL (inches) at sites available so far:**

Location	Rank	2022 Rain Total	Normal Ann Rain	Dep fm Normal	Records Began
Fort Myers Area	7th Wettest	72.70	57.41	+15.29	Jan 1902
Bartow	10th Wettest	68.74	50.88	+17.86	Jun 1892
St. Leo	24th Wettest	63.20	53.46	+9.74	Apr 1895
Tampa Area	13th Wettest	61.95	49.48	+12.47	Apr 1890
Plant City	26th Wettest	61.28	56.11	+5.17	Sep 1892
Punta Gorda Area	16th Wettest	58.18	52.97	+5.21	May 1914
Venice	12th Wettest	57.82	51.27	+6.55	May 1955
Archbold Bio Stn	21st Wettest	56.28	54.23	+2.05	Jan 1969
Inverness 3 SE	20th Wettest	55.89	52.39	+3.50	Jul 1948
Sarasota-Bradenton Area	39th Wettest (tie)	54.28	49.05	+5.23	Jan 1911
Lakeland Area	60th Driest	52.60	56.82	-4.22	Jan 1915
St. Petersburg Area	46th Driest	46.10	46.65	-0.55	Aug 1914
Chiefland 5 ESE	6th Driest	45.90	57.10	-11.20	Jul 1956
Tarpon Springs	30th Driest	44.35	54.29	-9.94	Jan 1892



On the following pages are tables of the Top Ten Warmest, Coolest, Wettest, and Driest Decembers and Years at some official NWS locations, which include the average/total for this December and 2022 where available, and the 1991-2020 Normal temperature and rainfall for the month of December and Annually.



**CHIEFLAND 5 ESE** (Records began in July 1956):

Warmest Decembers		Coolest Decembers		Wettest Decembers		Driest Decembers	
1	65.0 in 2021	1	47.7 in 2010	1	11.85 in 2018	1	0.00 in 1956
2	64.7 in 1971	2	48.0 in 1963	2	9.84 in 1964	2	0.04 in 2015
3	63.7 in 1998	3	50.2 in 1989	3	9.68 in 1997	3	0.42 in 2001
4	63.7 in 1984	4	51.3 in 1960	4	8.39 in 2005		0.42 in 1984
5	62.1 in 1982	5	52.2 in 2005	5	7.77 in 1996	5	0.51 in 2011
6	61.9 in 1990	6	52.3 in 2003	6	6.66 in 1967	6	0.66 in 2010
7	61.6 in 1956	7	52.5 in 1993	7	6.52 in 1983	7	0.71 in 2021
8	61.5 in 2001	8	52.9 in 1980	8	6.20 in 1969	8	0.72 in 1980
9	61.4 in 2006	9	53.0 in 1985	9	5.53 in 1976	9	0.78 in 1985
	61.4 in 1991		53.0 in 1968	10	5.38 in 1977	10	0.80 in 1994
...				...		...	
<b>22</b>	<b>58.8 in 2022</b>	<b>40</b>	<b>58.8 in 2022</b>	<b>48</b>	<b>1.41 in 2022</b>	<b>18</b>	<b>1.41 in 2022</b>
					1.41 in 1998		1.41 in 1998

Normal Temperature for December at CHIF1 = 57.4°  
 Normal Rainfall for December at CHIF1 = 3.25 inches

---

Warmest Years		Coolest Years		Wettest Years		Driest Years	
1	72.0 in 1998	1	66.5 in 2010	1	99.47 in 1964	1	40.77 in 2008
2	71.8 in 2020	2	67.0 in 1969	2	77.29 in 1959	2	41.70 in 2011
3	71.6 in 1990	3	67.4 in 1963	3	76.86 in 2018	3	41.85 in 2000
4	71.5 in 2018	4	67.7 in 1966	4	74.06 in 2004	4	43.05 in 2006
5	71.1 in 1991	5	68.0 in 1976	5	70.31 in 1996	5	45.45 in 1990
6	70.8 in 1982	6	68.2 in 1958	6	69.40 in 1983	<b>6</b>	<b>45.90 in 2022</b>
7	70.6 in 2021	7	68.4 in 2000	7	68.98 in 1965	7	46.69 in 2007
<b>8</b>	<b>70.5 in 2022</b>		68.4 in 1962	8	67.91 in 1982	8	47.05 in 1999
9	70.4 in 1975	9	68.5 in 1996	9	67.59 in 1966	9	48.04 in 1977
10	70.3 in 2012		68.5 in 1977	10	67.33 in 1957	10	49.21 in 1972
	70.3 in 1959						

Normal Temperature for the Year at CHIF1 = 69.2°  
 Normal Rainfall for the Year at CHIF1 = 57.10 inches

---

**INVERNESS 3 SE** (Records began in July 1948):

Warmest Decembers		Coolest Decembers		Wettest Decembers		Driest Decembers	
1	69.1 in 2015	1	47.7 in 2010	1	11.23 in 2018	1	0.11 in 1984
2	67.0 in 1948	2	50.1 in 1989	2	10.46 in 1997	2	0.14 in 2011
3	66.8 in 1971	3	52.4 in 2002	3	7.80 in 1953	3	0.26 in 1956
4	66.3 in 2016	4	54.1 in 2005	4	6.64 in 2002	4	0.42 in 1998
5	65.4 in 2021	5	54.3 in 1963	5	6.37 in 1973	5	0.50 in 2016
6	65.3 in 1949	6	54.4 in 1993	6	5.40 in 1969	6	0.63 in 2001
7	64.9 in 1967	7	55.0 in 1960	7	5.30 in 1977	7	0.73 in 2010
8	64.4 in 1956	8	55.4 in 2000	8	5.23 in 1972	8	0.75 in 1961
	64.4 in 1951	9	55.5 in 2003	9	5.05 in 1981	9	0.77 in 2021
10	64.3 in 2007	10	55.9 in 1997	10	4.89 in 1983	10	0.79 in 1990
...		...		...		...	
<b>29</b>	<b>60.0 in 2022</b>	<b>35</b>	<b>60.0 in 2022</b>	<b>48</b>	<b>1.22 in 2022</b>	<b>25</b>	<b>1.22 in 2022</b>

Normal Temperature for December at INVFl = 59.0  
 Normal Rainfall for December at INVFl = 2.48 inches

Warmest Years		Coolest Years		Wettest Years		Driest Years	
1	73.4 in 2015	1	68.8 in 1988	1	87.00 in 1960	1	35.66 in 1999
2	73.0 in 2020	2	68.9 in 2010	2	77.45 in 2021	2	36.50 in 1956
3	72.8 in 1949	3	69.0 in 1996	3	76.21 in 1953	3	37.34 in 1990
4	72.6 in 1953	4	69.3 in 1995	4	75.47 in 1982	4	38.22 in 2000
<b>5</b>	<b>72.4 in 2022</b>	5	69.4 in 2005	5	69.77 in 1959	5	40.35 in 2006
6	72.3 in 2019	6	69.6 in 1992	6	68.72 in 1964	6	42.22 in 1998
7	72.2 in 1975	7	69.7 in 1993	7	68.65 in 2018	7	43.28 in 1955
	72.2 in 1974	8	69.8 in 1981	8	65.24 in 1958	8	44.24 in 1961
	72.2 in 1959		68.8 in 1977	9	63.25 in 2002	9	44.29 in 1954
	72.2 in 1957	10	69.9 in 2001	10	62.76 in 1992	10	45.17 in 2013
				...		...	
				<b>20</b>	<b>55.89 in 2022</b>	<b>43</b>	<b>55.89 in 2022</b>

Normal Temperature for the Year at INVFl = 69.8°  
 Normal Rainfall for the Year at INVFl = 52.39 inches

**BROOKSVILLE AREA** (Records began in January 1892):

Warmest Decembers	Coollest Decembers	Wettest Decembers	Driest Decembers
1 70.5 in 2015	1 47.9 in 2010	1 10.10 in 1997	1 0.01 in 1955
2 70.1 in 1931	2 53.9 in 1935	2 9.23 in 2018	2 0.04 in 2015
3 68.6 in 1971	3 54.3 in 2003	3 8.30 in 1930	3 0.08 in 2011
4 67.1 in 1948	4 54.4 in 1989	4 8.10 in 1953	4 0.21 in 1908
5 66.8 in 2021	5 54.7 in 2005	5 6.91 in 1925	5 0.27 in 1910
66.8 in 1926	54.7 in 1903	6 6.40 in 1969	6 0.32 in 1946
7 66.5 in 1932	7 54.8 in 1930	7 6.38 in 1983	0.32 in 1932
8 66.4 in 1982	8 54.9 in 1963	8 5.99 in 2002	8 0.33 in 1956
9 66.3 in 1940	9 55.3 in 1985	9 5.68 in 1973	9 0.37 in 1992
10 66.2 in 1933	10 55.4 in 1910	10 5.60 in 1905	0.37 in 1990
...	...		
<b>67 60.6 in 2022</b>	<b>52 60.6 in 2022</b>		

Normal Temperature for December at BKV = 60.3°

Total Rainfall for December 2022 = Several days missing/unavailable

Normal Rainfall for December at BKV = 2.56 inches

-----

Warmest Years	Coollest Years	Wettest Years	Driest Years
1 74.3 in 1927	1 67.9 in 2010	1 80.17 in 1959	1 35.63 in 2010
2 73.7 in 1929	2 68.7 in 1920	2 79.39 in 1912	2 36.58 in 2000
3 73.6 in 2015	3 69.4 in 2000	3 77.49 in 1960	3 37.46 in 1954
4 73.5 in 1933	4 69.5 in 2004	4 75.09 in 1945	4 37.83 in 1927
5 73.4 in 2020	5 69.6 in 2003	5 72.34 in 1982	5 38.08 in 1955
6 73.3 in 1948	6 69.7 in 2005	6 71.91 in 1928	6 38.20 in 1931
7 73.0 in 2019	7 69.9 in 1894	7 71.35 in 1964	7 39.62 in 2006
8 72.9 in 1949	8 70.0 in 2008	8 70.98 in 1995	8 40.48 in 1951
72.9 in 1939	9 70.1 in 1999	9 70.12 in 1906	9 40.70 in 1977
10 72.7 in 1946	70.1 in 1924	10 69.70 in 1983	10 41.10 in 1956

Average Temperature for 2022 = Many days missing in January and February

Normal Temperature for the Year at BKV = 70.7°

Total Rainfall for 2022 = Many days missing/unavailable

Normal Rainfall for the Year at BKV = 51.94 inches

-----



**ST LEO** (Records began in April 1895):

Warmest Decembers	Coollest Decembers	Wettest Decembers	Driest Decembers
1 70.6 in 2015	1 51.4 in 2010	1 13.99 in 1997	1 0.13 in 1984
2 69.6 in 1931	2 52.1 in 1935	2 10.68 in 2002	0.13 in 1906
3 68.0 in 2021	3 53.0 in 1930	3 9.17 in 2018	3 0.14 in 2016
4 67.7 in 2007	4 54.1 in 1903	4 7.50 in 1900	4 0.17 in 1933
5 67.6 in 1948	5 54.2 in 1910	5 7.43 in 1981	5 0.18 in 1938
6 67.5 in 2001	6 55.1 in 1917	6 6.83 in 1969	6 0.22 in 2011
67.5 in 1984	7 56.6 in 1989	7 6.47 in 1983	0.22 in 1990
8 67.3 in 2006	8 56.7 in 1909	8 6.16 in 1953	8 0.23 in 1932
9 67.2 in 1998	9 57.0 in 1960	9 5.99 in 1907	0.23 in 1908
10 66.9 in 1982	10 57.2 in 1927	10 5.67 in 1930	10 0.31 in 1928
...	57.2 in 1895	...	...
<b>62 61.3 in 2022</b>	<b>61 61.3 in 2022</b>	<b>36 3.03 in 2022</b>	<b>91 3.03 in 2022</b>
61.3 in 1943	61.3 in 1943		

Normal Temperature for December at STLF1 = 62.1°

Normal Rainfall for December at STLF1 = 2.53 inches

---

Warmest Years	Coollest Years	Wettest Years	Driest Years
1 74.5 in 1998	1 69.3 in 1930	1 81.93 in 1945	1 36.61 in 1961
2 74.4 in 1990	2 69.5 in 1920	2 80.06 in 1900	2 39.27 in 2000
74.4 in 1948	3 69.6 in 2010	3 79.57 in 1953	3 40.49 in 1932
4 74.1 in 1982	69.6 in 1910	4 75.57 in 1983	4 41.37 in 1955
5 73.9 in 2007	5 69.9 in 1931	5 75.34 in 1960	5 41.69 in 1908
6 73.8 in 2020	6 70.0 in 1928	6 72.45 in 1982	6 42.02 in 1990
7 73.7 in 2006	7 70.2 in 1903	7 71.29 in 2003	7 42.62 in 1952
73.7 in 1994	8 70.3 in 1968	8 70.41 in 1959	8 42.98 in 1980
73.7 in 1949	70.3 in 1940	9 69.85 in 1934	9 43.44 in 2006
10 73.6 in 1985	70.3 in 1917	10 69.68 in 2002	10 43.47 in 1967
73.6 in 1946		...	
...	...	<b>24 63.20 in 2022</b>	
<b>27 72.9 in 2022</b>	<b>88 72.9 in 2022</b>		
72.9 in 1995	72.9 in 1995		
72.9 in 1939	72.9 in 1939		
72.9 in 1925	72.9 in 1925		

Normal Temperature for the Year at STLF1 = 71.9°

Normal Rainfall for the Year at STLF1 = 53.46 inches

**TARPON SPRINGS** (Records began in January 1892):

Warmest Decembers		Coolest Decembers		Wettest Decembers		Driest Decembers	
1	72.8 in 1931	1	50.9 in 2010	1	15.60 in 1997	1	0.02 in 1984
2	71.4 in 2015	2	53.1 in 1935	2	12.27 in 2002	2	0.12 in 2016
3	68.6 in 1971	3	53.3 in 1903	3	10.00 in 2018	3	0.14 in 1946
4	68.2 in 1998	4	53.6 in 1963	4	9.08 in 1983	4	0.17 in 1928
5	67.9 in 1982	5	55.0 in 1910	5	7.79 in 1969	5	0.19 in 2000
6	67.6 in 2016	6	55.6 in 1960	6	7.48 in 1973	6	0.20 in 1938
	67.6 in 2001		55.6 in 1917	7	6.95 in 1953	7	0.25 in 1906
8	67.5 in 2021	8	55.9 in 1930	8	5.75 in 1930	8	0.28 in 1908
9	67.2 in 2007	9	56.3 in 1989	9	5.47 in 1989	9	0.31 in 2011
	67.2 in 2006	10	56.5 in 2004	10	5.34 in 1907	10	0.35 in 1933
	67.2 in 1992						
...		...		...		...	
<b>73</b>	<b>60.5 in 2022</b>	<b>50</b>	<b>60.5 in 2022</b>	<b>31</b>	<b>3.76 in 2022</b>	<b>99</b>	<b>3.76 in 2022</b>

Normal Temperature for December at TRPF1 = 62.4°

Normal Rainfall for December at TRPF1 = 2.74 inches

-----

Warmest Years		Coolest Years		Wettest Years		Driest Years	
1	74.9 in 2019	1	69.5 in 1895	1	83.20 in 1959	1	32.85 in 2007
2	74.8 in 1990	2	69.6 in 1910	2	77.78 in 1957	2	32.87 in 1956
3	74.7 in 1994	3	69.9 in 1963	3	74.81 in 1960	3	33.48 in 1927
4	74.6 in 2015	4	70.0 in 1940	4	73.83 in 1983	4	35.39 in 1952
5	74.4 in 2017	5	70.1 in 1892	5	68.67 in 2012	5	36.66 in 2003
	74.4 in 1997	6	70.2 in 1968	6	67.64 in 1969	6	38.21 in 1967
	74.4 in 1991		70.2 in 1896	7	67.43 in 2019	7	38.65 in 1907
8	74.2 in 1998	8	70.3 in 2010	8	67.00 in 1925	8	39.65 in 1902
9	74.1 in 1932		70.3 in 1969	9	66.98 in 1900	9	40.15 in 1908
10	74.0 in 2018	10	70.5 in 1958	10	66.61 in 1997	10	40.50 in 1976
	74.0 in 1995		70.5 in 1904	...		...	
	74.0 in 1927			<b>98</b>	<b>44.35 in 2022</b>	<b>30</b>	<b>44.35 in 2022</b>
	74.0 in 1922						
...		...					
<b>60</b>	<b>72.1 in 2022</b>	<b>55</b>	<b>72.1 in 2022</b>				
	72.1 in 1987		72.1 in 1987				
	72.1 in 1928		72.1 in 1928				

Normal Temperature for the Year at TRPF1 = 72.9°

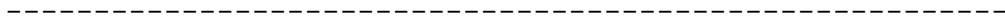
Normal Rainfall for the Year at TRPF1 = 54.29 inches

**TAMPA AREA** (Records began in April 1890):

Warmest Decembers	Coollest Decembers	Wettest Decembers	Driest Decembers
1 73.4 in 2015	1 53.2 in 2010	1 15.57 in 1997	1 0.07 in 1984
2 72.3 in 1931	2 54.5 in 1935	2 14.10 in 2002	2 0.09 in 1946
3 71.5 in 2021	3 54.9 in 1963	3 8.69 in 2018	0.09 in 1906
4 70.1 in 2016	4 55.5 in 1910	4 7.36 in 1907	4 0.13 in 1933
5 69.5 in 2006	5 55.8 in 1903	5 7.04 in 1941	5 0.19 in 2011
6 69.3 in 1971	6 56.1 in 1989	6 6.66 in 1950	0.19 in 1990
7 68.8 in 2001	7 56.7 in 1930	7 5.99 in 1930	7 0.20 in 1944
8 68.5 in 2013	8 56.8 in 1917	8 5.52 in 1973	8 0.21 in 1956
9 68.4 in 2007	9 57.5 in 1980	9 5.17 in 1969	9 0.29 in 1938
10 68.0 in 1998	57.5 in 1909	10 5.14 in 1905	10 0.30 in 1949
68.0 in 1948		...	...
...	...	<b>39 2.35 in 2022</b>	<b>95 2.35 in 2022</b>
<b>44 64.7 in 2022</b>	<b>90 64.7 in 2022</b>		

Normal Temperature for December at TPA = 64.9°

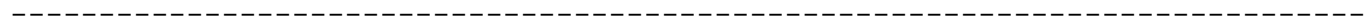
Normal Rainfall for December at TPA = 2.56 inches



Warmest Years	Coollest Years	Wettest Years	Driest Years
<b>1 76.4 in 2022</b>	1 69.8 in 1968	1 76.57 in 1959	1 28.89 in 1956
2 76.3 in 2020	2 70.1 in 1901	2 70.43 in 1957	2 29.85 in 2000
76.3 in 2017	3 70.3 in 1910	3 67.71 in 1997	3 31.47 in 1977
4 76.2 in 2015	4 70.4 in 1981	4 67.19 in 1912	4 32.25 in 1908
5 76.1 in 2021	5 70.5 in 1969	5 66.93 in 1894	5 32.31 in 1984
6 75.8 in 2019	6 71.0 in 1976	6 66.65 in 1945	6 33.90 in 1974
7 75.6 in 2018	71.0 in 1966	7 66.46 in 1979	7 34.32 in 1999
8 75.3 in 1990	71.0 in 1940	8 65.95 in 1947	8 34.39 in 1990
9 75.2 in 2016	71.0 in 1895	9 65.44 in 1960	9 34.77 in 1927
10 74.8 in 2012	71.0 in 1892	10 63.82 in 1899	10 34.87 in 1944
		11 63.50 in 2015	
		12 62.07 in 2002	
		<b>13 61.95 in 2022</b>	

Normal Temperature for the Year at TPA = 74.5°

Normal Rainfall for the Year at TPA = 49.48 inches



**ST PETERSBURG AREA** (Records began in August 1914):

Warmest Decembers	Coollest Decembers	Wettest Decembers	Driest Decembers
1 74.2 in 1931	1 56.4 in 2010	1 17.41 in 2002	1 0.07 in 1984
2 71.9 in 1971	2 56.7 in 1989	2 14.62 in 1997	2 0.14 in 1949
3 71.0 in 2021	3 56.9 in 1935	3 7.00 in 1983	0.14 in 1938
4 70.6 in 2015	4 57.1 in 1963	4 6.77 in 1973	4 0.24 in 1990
5 69.7 in 1998	5 58.7 in 1930	5 6.67 in 1930	5 0.28 in 2016
6 69.5 in 2016	6 58.8 in 1917	6 6.45 in 1969	6 0.38 in 2015
69.5 in 1948	7 59.2 in 1962	7 6.03 in 1914	7 0.41 in 1924
8 69.4 in 2013	8 59.6 in 1950	8 5.92 in 1953	8 0.43 in 1932
9 69.3 in 2007	9 60.0 in 1954	9 5.84 in 2018	9 0.44 in 1946
10 69.2 in 2001	10 60.4 in 1944	10 5.49 in 1950	10 0.45 in 2011
...	...	...	...
<b>57 63.9 in 2022</b>	<b>50 63.9 in 2022</b>	<b>47 2.14 in 2022</b>	<b>65 2.14 in 2022</b>
63.9 in 1999	63.9 in 2022		

Normal Temperature for December at SPG = 65.1°  
 Normal Rainfall for December at SPG = 2.39 inches

-----

Warmest Years	Coollest Years	Wettest Years	Driest Years
1 76.4 in 2020	1 71.8 in 1940	1 87.62 in 1959	1 30.41 in 1984
76.4 in 2015	2 72.3 in 1920	2 79.30 in 1953	2 32.57 in 1966
3 76.1 in 2017	3 72.4 in 1968	3 73.88 in 1957	3 33.54 in 2006
4 76.0 in 2021	72.4 in 1963	4 72.81 in 1997	4 34.01 in 1927
76.0 in 2003	5 72.5 in 1996	5 72.59 in 1947	5 34.88 in 1956
6 75.7 in 2005	6 72.6 in 1917	6 70.12 in 1954	6 36.34 in 1944
7 75.6 in 1946	7 72.7 in 1966	7 69.66 in 1988	7 36.40 in 2021
8 75.5 in 2012	72.7 in 1954	8 67.23 in 1922	8 36.52 in 2007
75.5 in 1972	72.7 in 1915	9 65.00 in 1952	9 36.62 in 1923
75.5 in 1933	10 72.8 in 1983	10 64.87 in 1995	10 37.15 in 2005
75.5 in 1932		...	...
<b>12 75.4 in 2022</b>		<b>64 46.10 in 2022</b>	<b>46 46.10 in 2022</b>
75.4 in 2018			
75.4 in 1990			

Normal Temperature for the Year at SPG = 74.7°  
 Normal Rainfall for the Year at SPG = 46.65 inches

-----

**PLANT CITY** (Records began in September 1892):

Warmest Decembers	Coollest Decembers	Wettest Decembers	Driest Decembers
1 73.0 in 2015	1 51.1 in 1935	1 14.75 in 1997	1 0.00 in 1908
2 70.6 in 1971	2 53.0 in 2010	2 9.63 in 2002	2 0.05 in 1906
3 70.5 in 2016	3 54.0 in 1930	3 7.94 in 2018	3 0.21 in 1932
4 69.7 in 2021	4 54.1 in 1910	4 7.62 in 1905	4 0.22 in 1984
5 69.6 in 1931	5 56.0 in 1989	5 6.57 in 1983	5 0.26 in 1987
6 68.9 in 1948	6 56.1 in 1963	6 6.47 in 1925	0.26 in 1917
7 68.4 in 2013	7 56.2 in 1903	7 6.14 in 1969	7 0.28 in 2016
8 67.9 in 1978	8 57.2 in 1915	8 6.06 in 1907	0.28 in 1962
9 67.7 in 2007	9 57.3 in 1901	9 6.04 in 1930	9 0.30 in 1933
10 67.6 in 1998	10 57.5 in 1917	10 5.80 in 1941	10 0.32 in 1956
...	...		0.32 in 1946
<b>35 64.7 in 2022</b>	<b>83 64.7 in 2022</b>	...	...
		<b>51 1.94 in 2022</b>	<b>74 1.94 in 2022</b>

Normal Temperature for December at PLCF1 = 65.0°  
 Normal Rainfall for December at PLCF1 = 2.54 inches

---

Warmest Years	Coollest Years	Wettest Years	Driest Years
1 76.6 in 2020	1 69.2 in 1930	1 86.68 in 1959	1 32.96 in 1961
76.6 in 2019	2 69.4 in 1931	2 79.20 in 1947	2 36.36 in 1909
3 75.8 in 2021	3 69.8 in 1940	3 78.25 in 1960	3 37.24 in 1956
<b>4 75.7 in 2022</b>	4 70.4 in 1928	4 76.88 in 2004	4 39.17 in 1977
5 75.3 in 2015	5 70.6 in 1942	5 75.82 in 1953	5 39.29 in 2007
6 75.0 in 2016	70.6 in 1935	6 71.97 in 1983	6 39.48 in 1981
7 74.9 in 2018	7 70.8 in 2010	7 71.76 in 1933	7 39.74 in 1990
8 74.2 in 1948	70.8 in 1926	8 70.65 in 1957	8 40.41 in 1927
9 74.1 in 1990	9 70.9 in 1976	9 69.35 in 1905	9 40.49 in 1908
74.1 in 1911	70.9 in 1932	10 68.88 in 2018	10 42.38 in 2000
		...	
		<b>26 61.28 in 2022</b>	

Normal Temperature for the Year at PLCF1 = 74.3°  
 Normal Rainfall for the Year at PLCF1 = 56.11 inches

---

**LAKELAND AREA** (Records began in January 1915):

Warmest Decembers	Coollest Decembers	Wettest Decembers	Driest Decembers
1 73.1 in 2015	1 53.2 in 2010	1 12.28 in 1997	1 Trace in 1917
2 72.8 in 1931	2 54.8 in 1935	2 11.74 in 2002	2 0.09 in 1944
3 70.2 in 2016	3 56.2 in 1963	3 8.13 in 2018	3 0.10 in 1924
4 70.0 in 1971	4 56.8 in 1989	4 7.04 in 1983	4 0.12 in 1938
5 69.1 in 2021	5 57.3 in 1960	5 6.15 in 1930	5 0.14 in 1962
6 68.6 in 2013	6 57.9 in 1930	6 6.09 in 1925	6 0.17 in 1987
7 68.4 in 2007	7 58.2 in 1950	7 5.51 in 1989	7 0.30 in 1932
8 68.0 in 1922	8 58.4 in 1954	8 5.33 in 1941	8 0.34 in 1984
9 67.9 in 2001	9 58.9 in 1980	9 5.21 in 1949	9 0.35 in 1990
10 67.8 in 1998	10 59.0 in 1969	10 4.53 in 1950	10 0.36 in 1943
...	59.0 in 1944	...	0.36 in 1933
<b>49 64.0 in 2022</b>	<b>59 64.0 in 2022</b>	<b>38 2.12 in 2022</b>	<b>70 2.12 in 2022</b>
64.0 in 1934	64.0 in 1934	2.12 in 1981	2.12 in 1981

Normal Temperature for December at LLDF1 = 64.8°  
 Normal Rainfall for December at LLDF1 = 2.61 inches

-----

Warmest Years	Coollest Years	Wettest Years	Driest Years
1 75.7 in 2020	1 70.6 in 1968	1 78.15 in 2018	1 34.93 in 1927
75.7 in 2015	2 70.9 in 1969	2 70.24 in 1959	2 35.83 in 1961
3 75.6 in 2019	3 71.0 in 1966	3 69.72 in 1979	3 36.30 in 1954
75.6 in 1990	71.0 in 1958	4 68.82 in 2017	4 37.36 in 1985
5 75.3 in 2021	71.0 in 1940	5 67.13 in 1994	5 37.80 in 1967
6 75.2 in 2017	6 71.2 in 1970	6 66.92 in 2005	6 38.06 in 1962
7 75.2 in 1994	7 71.4 in 1960	7 66.58 in 2002	7 38.26 in 2000
<b>8 75.0 in 2022</b>	71.4 in 1920	8 66.13 in 2004	8 38.29 in 1972
9 74.8 in 2016	9 71.5 in 1963	9 65.42 in 1960	9 39.43 in 1990
74.8 in 1991	10 71.6 in 2010	10 63.79 in 1919	10 39.57 in 1984
...	...	...	39.57 in 1981
		<b>48 52.60 in 2022</b>	<b>60 52.60 in 2022</b>
			39.57 in 1942

Normal Temperature for the Year at LLDF1 = 73.9°  
 Normal Rainfall for the Year at LLDF1 = 56.82 inches

-----



**WINTER HAVEN AREA** (Records began in March 1941):

Warmest Decembers	Coollest Decembers	Wettest Decembers	Driest Decembers
1 72.4 in 2015	1 52.7 in 2010	1 12.52 in 2002	1 0.03 in 1987
2 70.8 in 1971	2 55.5 in 1963	2 9.79 in 1997	0.03 in 1984
3 70.3 in 2021	3 57.4 in 1989	3 6.91 in 2018	3 0.07 in 1990
4 69.5 in 1948	4 59.1 in 1962	4 6.44 in 1983	4 0.21 in 1956
5 69.2 in 2016	59.1 in 1960	5 5.35 in 1989	5 0.23 in 1962
6 68.4 in 1946	6 59.2 in 1968	6 4.75 in 1991	6 0.29 in 1944
7 68.1 in 1984	7 59.3 in 1950	7 3.88 in 1947	7 0.33 in 2011
8 68.0 in 2007	8 59.8 in 1944	8 3.87 in 1950	8 0.40 in 1991
68.0 in 1991	9 59.9 in 2000	9 3.77 in 1941	0.40 in 1968
68.0 in 1986	10 60.1 in 2003	10 3.63 in 1969	10 0.47 in 1943
	60.1 in 1952	...	...
		<b>36 1.79 in 2022</b>	<b>45 1.79 in 2022</b>
		1.79 in 1946	1.79 in 1946

Average Temperature for Dec 2022 = Few days missing  
 Normal Temperature for December at GIF = 64.6°  
 Normal Rainfall for December at GIF = 2.68 inches

-----

Warmest Years	Coollest Years	Wettest Years	Driest Years
1 76.6 in 2019	1 70.2 in 1968	1 73.28 in 1959	1 30.35 in 2000
2 76.2 in 2015	2 71.1 in 1981	2 69.61 in 1960	2 31.95 in 2006
3 76.1 in 2020	3 71.2 in 1963	3 65.94 in 1957	3 32.73 in 2009
4 75.8 in 1989	4 71.4 in 1977	4 65.09 in 1947	4 35.26 in 1985
5 75.7 in 1991	71.4 in 1969	5 64.90 in 1948	5 36.78 in 2007
6 75.3 in 2021	6 71.6 in 2010	6 63.55 in 1953	6 36.89 in 1980
7 75.1 in 2018	71.6 in 1958	7 62.94 in 1983	7 39.02 in 2021
75.1 in 2017	8 71.9 in 1962	8 62.73 in 1994	8 39.06 in 2017
9 75.0 in 1990	71.9 in 1960	9 62.10 in 1982	9 39.51 in 1972
10 74.7 in 2016	10 72.0 in 1966	10 61.77 in 2002	10 39.81 in 1961

Average Temperature for 2022 = Many days missing/unrepresentative  
 Normal Temperature for the Year at GIF = 74.6°

Total Rainfall for 2022 = Many days missing/unrepresentative  
 Normal Rainfall for the Year at GIF = 46.12 inches

-----

**BARTOW** (Records began in June 1892):

Warmest Decembers	Coollest Decembers	Wettest Decembers	Driest Decembers
1 72.4 in 2015	1 53.2 in 2010	1 13.31 in 2002	1 0.00 in 1906
2 71.0 in 2013	2 54.1 in 1910	2 11.38 in 1983	2 0.05 in 1932
3 69.2 in 1948	3 54.4 in 1903	3 10.70 in 1997	3 0.08 in 1933
4 69.0 in 2016	4 55.9 in 1915	4 8.25 in 1905	4 0.15 in 1944
69.0 in 2001	5 57.1 in 1909	5 6.45 in 2018	5 0.23 in 1962
69.0 in 1971	6 57.3 in 1963	6 6.35 in 1900	6 0.24 in 1987
7 68.5 in 2021	7 57.4 in 1954	7 5.50 in 1925	0.24 in 1956
8 68.4 in 1998	8 57.6 in 1989	8 5.25 in 1942	8 0.27 in 1990
9 68.2 in 2006	9 58.4 in 1960	9 5.14 in 1930	9 0.28 in 1984
10 67.8 in 1986	10 59.0 in 2020	10 5.07 in 1989	10 0.29 in 1946
...	...	...	...
<b>35 63.8 in 2022</b>	<b>51 63.8 in 2022</b>	<b>88 1.05 in 2022</b>	<b>43 1.05 in 2022</b>
		1.05 in 2021	1.05 in 2021

Normal Temperature for December at BARF1 = 63.6°  
 Normal Rainfall for December at BARF1 = 2.16 inches

-----

Warmest Years	Coollest Years	Wettest Years	Driest Years
1 76.0 in 2014	1 70.8 in 1901	1 83.44 in 1959	1 34.10 in 2007
2 74.9 in 1998	2 71.2 in 1968	2 77.99 in 1983	2 35.87 in 2000
3 74.8 in 1948	71.2 in 1914	3 73.96 in 1930	3 36.43 in 1927
4 74.6 in 2020	4 71.3 in 1896	4 73.85 in 1960	4 37.19 in 1950
74.6 in 2012	5 71.5 in 1893	5 73.72 in 1957	5 37.51 in 2006
6 74.5 in 2019	6 71.6 in 1976	6 73.58 in 1947	6 40.72 in 1990
7 74.4 in 2017	71.6 in 1970	7 71.44 in 2002	7 41.00 in 1916
8 74.1 in 2021	71.6 in 1963	8 71.29 in 1924	8 41.41 in 1955
74.1 in 1997	71.6 in 1913	9 69.90 in 1903	9 42.29 in 1999
74.1 in 1982	10 71.9 in 1981	<b>10 68.74 in 2022</b>	10 42.48 in 1974
<b>11 74.0 in 2022</b>	71.9 in 1979		
74.0 in 1999	71.9 in 1956		
	71.9 in 1912		

Normal Temperature for the Year at BARF1 = 73.1°  
 Normal Rainfall for the Year at BARF1 = 50.88 inches

-----

**SARASOTA-BRADENTON AREA** (Records began in January 1911):

Warmest Decembers	Coollest Decembers	Wettest Decembers	Driest Decembers
1 72.8 in 2015	1 53.0 in 2010	1 11.94 in 1997	1 0.00 in 1933
2 71.2 in 1931	2 54.9 in 1935	2 11.63 in 2002	2 0.03 in 1949
3 69.8 in 1971	3 56.8 in 1930	3 8.10 in 2018	3 0.17 in 2011
4 69.5 in 2006	4 57.4 in 1963	4 6.86 in 1914	4 0.19 in 1962
5 69.3 in 2021	5 58.0 in 1917	5 6.71 in 1977	5 0.21 in 2013
6 69.3 in 2016	6 58.4 in 1915	6 6.23 in 1983	6 0.24 in 1984
7 69.1 in 2013	7 58.7 in 1989	7 6.21 in 1930	7 0.28 in 1923
8 68.8 in 2007	8 58.7 in 1976	8 5.80 in 1958	8 0.31 in 1938
9 68.7 in 2019	9 59.0 in 1944	9 5.72 in 1913	9 0.34 in 1946
10 68.6 in 1948	10 59.4 in 1985	10 5.58 in 1953	10 0.36 in 1932
...	...	...	...
<b>42 65.1 in 2022</b>	<b>65 65.1 in 2022</b>	<b>33 2.63 in 2022</b>	<b>77 2.63 in 2022</b>
65.1 in 1936	65.1 in 1936	2.63 in 1979	2.63 in 1979
		2.63 in 1927	2.63 in 1927

Normal Temperature for December at SRQ = 65.2°

Normal Rainfall for December at SRQ = 2.33 inches

---

Warmest Years	Coollest Years	Wettest Years	Driest Years
1 76.3 in 2020	1 70.6 in 1977	1 82.98 in 1957	1 29.45 in 1944
2 76.2 in 2019	2 70.6 in 1976	2 78.59 in 1959	2 31.51 in 2007
3 75.3 in 2016	3 70.6 in 1940	3 78.33 in 1997	3 31.98 in 1956
4 75.2 in 2015	4 70.9 in 2010	4 77.50 in 1912	4 32.19 in 1951
5 75.2 in 1990	5 70.9 in 1981	5 73.49 in 1960	5 33.23 in 2009
6 74.8 in 2021	6 70.9 in 1968	6 72.21 in 1922	6 34.00 in 1923
<b>7 74.7 in 2022</b>	7 70.9 in 1930	7 68.52 in 1943	7 34.32 in 2008
8 74.6 in 2017	8 71.0 in 1931	8 68.02 in 1983	8 36.97 in 1950
9 74.5 in 1994	9 71.0 in 1915	9 67.46 in 1958	9 37.45 in 2000
10 74.4 in 2018	10 71.1 in 1928	10 67.01 in 1928	10 38.87 in 1973
74.4 in 2012		...	...
74.4 in 2007		<b>39 54.28 in 2022</b>	<b>72 54.28 in 2022</b>
		54.28 in 1935	54.28 in 1935

Normal Temperature for the Year at SRQ = 74.1°

Normal Rainfall for the Year at SRQ = 49.05 inches

**VENICE** (Records began in May 1955):

Warmest Decembers	Coollest Decembers	Wettest Decembers	Driest Decembers
1 73.1 in 1987	1 54.8 in 2010	1 9.48 in 1997	1 0.04 in 2016
2 72.9 in 2015	2 57.7 in 1989	2 7.39 in 2018	2 0.07 in 2011
3 70.9 in 1971	3 57.9 in 1963	3 6.50 in 1983	3 0.10 in 2014
4 70.7 in 2016	4 59.4 in 1976	4 6.00 in 2002	4 0.13 in 2013
5 70.2 in 2021	59.4 in 1960	5 5.34 in 2009	0.13 in 1991
6 69.3 in 1998	6 59.7 in 1981	6 5.25 in 1986	6 0.18 in 1987
7 69.1 in 2011	7 60.1 in 2003	7 4.94 in 2003	7 0.33 in 1962
8 68.6 in 1982	60.1 in 1962	8 4.16 in 1958	8 0.44 in 1984
9 68.3 in 2006	9 60.2 in 1975	9 4.12 in 1989	9 0.50 in 2021
10 68.2 in 2001	10 60.5 in 1973	10 3.85 in 1979	10 0.60 in 2001
...	...	...	...
<b>24 66.1 in 2022</b>	<b>39 66.1 in 2022</b>	<b>41 1.07 in 2022</b>	<b>28 1.07 in 2022</b>

Normal Temperature for December at VNCF1 = 64.9°  
 Normal Rainfall for December at VNCF1 = 2.31 inches

---

Warmest Years	Coollest Years	Wettest Years	Driest Years
1 76.0 in 2012	1 70.9 in 1981	1 75.08 in 1995	1 29.07 in 1990
2 75.9 in 2019	2 71.2 in 1977	2 74.15 in 1957	2 32.46 in 2007
3 75.7 in 2015	3 71.8 in 1962	3 73.28 in 1959	3 35.52 in 1985
75.7 in 1998	4 71.9 in 1978	4 72.40 in 1983	4 36.50 in 1961
5 75.6 in 2011	5 72.0 in 1969	5 65.46 in 2003	5 36.69 in 1956
6 75.3 in 2020	72.0 in 1960	6 63.35 in 2005	6 37.23 in 1981
7 75.1 in 1997	7 72.1 in 1966	7 63.13 in 1992	7 38.45 in 2021
75.1 in 1994	72.1 in 1963	8 62.98 in 1969	8 38.50 in 2009
9 75.0 in 2017	72.1 in 1956	9 61.25 in 2017	9 39.49 in 2019
<b>10 74.7 in 2022</b>	10 72.3 in 1970	10 59.17 in 1982	10 40.51 in 2000
		11 57.94 in 1999	
		<b>12 57.82 in 2022</b>	

Normal Temperature for the Year at VNCF1 = 73.7°  
 Normal Rainfall for the Year at VNCF1 = 51.27 inches

---

**MYAKKA RIVER STATE PARK** (Temperature records began in March 1956  
and Rainfall records began in Sep 1943):

Warmest Decembers	Coollest Decembers	Wettest Decembers	Driest Decembers
1 73.3 in 2015	1 53.4 in 2010	1 10.89 in 1997	1 0.03 in 1949
2 70.8 in 2016	2 55.9 in 1969	2 9.65 in 2002	2 0.10 in 1991
3 69.4 in 2013	3 57.0 in 1989	3 8.20 in 1983	3 0.16 in 1961
4 69.3 in 1998	4 57.2 in 1960	4 7.59 in 2018	4 0.17 in 2011
5 69.2 in 1971	5 57.3 in 1962	5 6.32 in 1958	5 0.19 in 1987
6 69.1 in 2006	6 58.7 in 1968	6 6.06 in 2009	6 0.22 in 2013
7 68.7 in 2007	7 59.1 in 1957	7 5.97 in 1977	0.22 in 1962
8 68.1 in 1982	8 59.9 in 2002	8 5.48 in 2003	8 0.25 in 1956
9 68.0 in 1991	9 60.0 in 2020	9 5.00 in 2015	9 0.29 in 1943
10 67.9 in 1992	60.0 in 1973	10 4.23 in 1989	10 0.36 in 1984
67.9 in 1986			

Average Temperature for Dec 1-27, 2022 = 63.8°

Normal Temperature for December at MKCF1 = 64.8°

Total Rainfall for Dec 1-27, 2022 = 1.39 inches

Normal Rainfall for December at MKCF1 = 2.51 inches

-----

Warmest Years	Coollest Years	Wettest Years	Driest Years
1 76.0 in 2015	1 70.6 in 1962	1 82.31 in 1995	1 36.97 in 1961
2 75.5 in 2019	2 71.3 in 1958	2 80.36 in 1983	2 38.15 in 1956
3 75.2 in 1997	3 71.6 in 1970	3 78.82 in 2018	3 38.24 in 1955
4 75.0 in 1990	71.6 in 1960	4 77.59 in 1959	4 39.15 in 1944
5 74.9 in 2017	5 71.8 in 2010	5 76.72 in 1982	5 42.29 in 1950
6 74.8 in 1982	71.8 in 1977	6 76.60 in 2003	6 42.54 in 1946
7 74.6 in 2016	7 72.1 in 1981	7 76.52 in 1998	7 44.03 in 1985
74.6 in 1994	72.1 in 1976	8 76.04 in 1997	8 44.10 in 1986
9 74.5 in 2018	72.1 in 1973	9 75.62 in 1957	9 44.36 in 2021
74.5 in 1999	10 72.2 in 1988	10 71.72 in 2017	10 45.21 in 2000

Average Temperature for 2022 = Numerous Days missing, most in early October

Normal Temperature for the Year at MKCF1 = 73.6°

Total Rainfall for 2022 = Numerous Days missing, most in early October

Normal Rainfall for the Year at MKCF1 = 61.07 inches

-----

**WAUCHULA 2 N** (Records began in January 1933):

Warmest Decembers	Coollest Decembers	Wettest Decembers	Driest Decembers
1 72.0 in 2015	1 50.0 in 2010	1 7.89 in 2002	1 0.00 in 2001
2 70.0 in 1971	2 54.4 in 2009	2 6.29 in 1997	2 0.11 in 1938
3 69.8 in 2007	3 55.7 in 1935	3 6.10 in 2018	3 0.12 in 1956
4 68.7 in 2016	4 56.8 in 1963	4 5.57 in 2009	4 0.14 in 1933
68.7 in 1948	5 57.0 in 2003	5 5.51 in 1986	5 0.20 in 2011
6 68.4 in 1940	6 58.5 in 1989	6 4.83 in 1977	6 0.21 in 1934
7 67.8 in 2006	7 58.6 in 2020	7 4.77 in 1958	7 0.22 in 2013
8 67.7 in 1986	58.6 in 2002	8 4.20 in 1940	8 0.28 in 1991
9 67.6 in 1946	58.6 in 1954	9 4.13 in 1950	9 0.31 in 2014
10 67.5 in 1941	10 58.7 in 2005	10 4.11 in 1989	0.31 in 1949

Average Temperature for Dec 1-25, 2022 = 63.8°

Normal Temperature for December at WAUF1 = 63.0°

Total Rainfall for Dec 1-25, 2022 = 3.57 inches

Normal Rainfall for December at WAUF1 = 2.13 inches

---

Warmest Years	Coollest Years	Wettest Years	Driest Years
1 74.9 in 1990	1 70.8 in 1996	1 83.48 in 1953	1 29.56 in 2000
2 74.5 in 2008	2 70.9 in 2014	2 82.10 in 1947	2 36.59 in 2007
74.5 in 1948	3 71.3 in 1954	3 69.13 in 1959	3 36.66 in 1981
4 74.4 in 2015	4 71.4 in 1981	4 68.89 in 1939	4 36.93 in 1961
5 74.3 in 1991	71.4 in 1968	5 67.34 in 1983	5 40.25 in 1989
74.3 in 1933	71.4 in 1956	6 66.05 in 1998	6 40.27 in 1999
7 74.2 in 2009	7 71.5 in 2012	7 65.77 in 1997	7 41.39 in 2006
8 74.1 in 1989	71.5 in 2011	8 63.91 in 1960	8 42.06 in 1967
9 74.0 in 2019	9 71.6 in 1976	9 62.98 in 1943	9 43.58 in 1950
10 73.9 in 2020	10 71.7 in 2013	10 62.84 in 2017	10 43.66 in 1966
73.9 in 2017	71.7 in 1999		
73.9 in 1946	71.7 in 1940		

Average Temperature for Jan 1-Dec 25, 2022 = 73.6°

Normal Temperature for the Year at WAUF1 = 72.4°

Total Rainfall for Jan 1-Dec 25, 2022 = 46.05 inches

Normal Rainfall for the Year at WAUF1 = 52.00 inches



**ARCHBOLD BIO STN** (Records began in January 1969):

Warmest Decembers	Coollest Decembers	Wettest Decembers	Driest Decembers
1 73.4 in 2015	1 52.1 in 2010	1 7.60 in 1997	1 0.22 in 1981
2 70.5 in 2016	2 56.3 in 1989	2 6.22 in 2002	2 0.27 in 2005
3 69.1 in 1971	3 57.8 in 1969	3 4.90 in 1977	3 0.31 in 1970
4 69.0 in 2006	4 59.1 in 2003	4 4.16 in 1978	4 0.38 in 2000
5 68.4 in 2013	5 59.2 in 1980	5 3.83 in 1994	5 0.40 in 2021
6 67.3 in 2021	6 59.4 in 1993	6 3.75 in 2003	6 0.42 in 2013
7 67.2 in 1986	7 60.1 in 1985	7 3.35 in 1986	7 0.43 in 2011
8 67.0 in 2007	8 60.3 in 2020	8 3.10 in 2020	8 0.51 in 1982
9 66.7 in 1998	9 60.5 in 2005	9 3.04 in 2015	9 0.54 in 2016
10 66.3 in 1978	60.5 in 2002	10 2.93 in 1974	10 0.55 in 2001
...	...	...	...
<b>23 64.4 in 2022</b>	<b>31 64.4 in 2022</b>	<b>35 1.14 in 2022</b>	<b>20 1.14 in 2022</b>
64.4 in 2014	64.4 in 2014		

Normal Temperature for December at ACHF1 = 64.4°  
 Normal Rainfall for December at ACHF1 = 2.03 inches

---

Warmest Years	Coollest Years	Wettest Years	Driest Years
1 75.4 in 2015	1 70.1 in 2010	1 72.61 in 2002	1 27.31 in 2000
2 74.3 in 2020	2 70.6 in 1981	2 66.06 in 2004	2 33.00 in 2007
74.3 in 2017	3 70.7 in 1983	3 64.09 in 1969	3 36.26 in 1980
4 74.1 in 2019	4 71.0 in 1970	4 63.49 in 2013	4 37.46 in 2009
5 74.0 in 1990	71.0 in 1969	5 62.23 in 1992	5 41.45 in 1971
<b>6 73.9 in 2022</b>	6 71.1 in 2000	6 61.73 in 2015	6 43.02 in 1975
73.9 in 2016	71.1 in 1988	7 61.07 in 1982	7 43.84 in 1996
8 73.7 in 1991	71.1 in 1984	8 60.89 in 1979	8 43.97 in 1985
73.7 in 1975	9 71.2 in 1996	9 60.33 in 2001	9 45.03 in 1981
10 73.3 in 2021	10 71.3 in 1987	10 60.10 in 1999	10 45.06 in 1972
73.3 in 2018	71.3 in 1977	...	...
	71.3 in 1976	<b>21 56.28 in 2022</b>	<b>34 56.28 in 2022</b>

Normal Temperature for the Year at ACHF1 = 72.9°  
 Normal Rainfall for the Year at ACHF1 = 54.23 inches

**PUNTA GORDA AREA** (Records began in May 1914):

Warmest Decembers	Coollest Decembers	Wettest Decembers	Driest Decembers
1 72.8 in 2015	1 54.0 in 2010	1 6.88 in 2002	1 0.00 in 1933
2 72.5 in 1931	2 57.6 in 1935	2 6.50 in 1925	2 0.07 in 1938
3 71.4 in 1948	3 58.0 in 1963	3 6.47 in 1997	3 0.09 in 1926
4 70.4 in 2013	4 58.4 in 1917	4 5.42 in 1995	4 0.12 in 1932
70.4 in 1971	5 59.9 in 2003	5 4.95 in 1958	5 0.15 in 2014
70.4 in 1946	6 60.1 in 1989	6 4.92 in 1977	6 0.17 in 2011
7 70.0 in 2021	60.1 in 1969	7 4.63 in 2009	7 0.25 in 1981
70.0 in 2016	8 60.3 in 1968	8 4.49 in 1967	8 0.27 in 1928
70.0 in 1932	9 60.6 in 1975	9 4.31 in 1969	9 0.28 in 1991
10 69.7 in 1951	10 60.7 in 1930	10 4.00 in 1986	10 0.34 in 2000
	60.7 in 1915		0.34 in 1962
...	...		
<b>45 66.0 in 2022</b>	<b>59 66.0 in 2022</b>		
66.0 in 1987	66.0 in 1987		

Normal Temperature for December at PGD = 65.8°

Total Rainfall for Dec 2022 = 0.89 (Two days missing)

Normal Rainfall for December at PGD = 1.99 inches

---

Warmest Years	Coollest Years	Wettest Years	Driest Years
1 76.8 in 1948	1 71.5 in 1968	1 88.10 in 1947	1 30.01 in 2007
2 76.4 in 1946	2 71.6 in 2010	2 87.09 in 1959	2 30.07 in 1927
3 75.9 in 2020	3 71.8 in 1969	3 81.06 in 1995	3 32.85 in 1990
4 75.8 in 1949	71.8 in 1915	4 65.33 in 1922	4 35.07 in 1955
5 75.6 in 2018	5 71.9 in 1976	5 64.87 in 2003	5 36.18 in 2000
75.6 in 1990	71.9 in 1970	6 64.43 in 1983	6 36.87 in 1976
75.6 in 1945	7 72.3 in 1940	7 63.97 in 1928	7 37.41 in 1923
8 75.5 in 2015	8 72.4 in 1977	8 63.30 in 2018	8 38.03 in 1920
<b>9 75.4 in 2022</b>	9 72.6 in 1942	9 62.41 in 2016	9 38.11 in 1971
75.4 in 2021	10 72.7 in 1930	10 62.02 in 1958	10 39.17 in 1956
		...	
		<b>16 58.18 in 2022*</b>	

\*Two days missing in Dec

Normal Temperature for the Year at PGD = 74.3°

Normal Rainfall for the Year at PGD = 52.97 inches

**FORT MYERS AREA** (Records began in January 1902):

Warmest Decembers	Coollest Decembers	Wettest Decembers	Driest Decembers
1 73.6 in 2015	1 56.7 in 2010	1 7.04 in 1925	1 Trace in 1956
2 73.3 in 2016	2 58.4 in 1935	2 6.21 in 1905	2 0.01 in 1924
3 72.8 in 1931	3 58.5 in 1903	3 5.71 in 2019	3 0.02 in 1984
4 72.6 in 2021	4 58.8 in 1910	4 5.46 in 1997	0.02 in 1906
5 72.3 in 1971	5 59.3 in 1963	5 5.42 in 1940	5 0.05 in 2014
6 71.5 in 2013	6 60.3 in 1950	6 5.26 in 1986	6 0.09 in 2005
7 71.2 in 2007	7 60.5 in 1954	7 5.16 in 1979	7 0.13 in 1933
8 70.9 in 2006	8 60.8 in 1989	8 4.68 in 2003	8 0.14 in 1951
9 70.7 in 2019	9 61.0 in 1969	9 4.35 in 1978	9 0.15 in 1926
10 70.5 in 1948	61.0 in 1930	10 3.95 in 1969	10 0.16 in 1968
...		...	...
<b>24 68.8 in 2022</b>		<b>60 1.10 in 2022</b>	<b>61 1.10 in 2022</b>
68.8 in 1991		1.10 in 1909	1.10 in 1909
68.8 in 1951			
68.8 in 1946			
68.8 in 1932			

Normal Temperature for December at FMY = 67.3°

Normal Rainfall for December at FMY = 1.90 inches

---

Warmest Years	Coollest Years	Wettest Years	Driest Years
<b>1 77.6 in 2022</b>	1 71.2 in 1910	1 80.17 in 1947	1 32.83 in 1964
2 77.1 in 2020	2 71.8 in 1903	2 77.35 in 1922	2 32.85 in 1927
3 77.0 in 2015	3 72.1 in 1904	3 74.85 in 1983	3 33.93 in 1944
77.0 in 1990	4 72.3 in 1958	4 74.75 in 1912	4 34.28 in 1956
5 76.9 in 2021	72.3 in 1902	5 74.46 in 2005	5 35.00 in 1988
6 76.8 in 2019	6 72.4 in 1977	6 73.14 in 1995	6 36.19 in 1950
7 76.7 in 1997	72.4 in 1917	<b>7 72.70 in 2022</b>	7 38.50 in 1907
8 76.6 in 1994	8 72.5 in 1976	8 71.94 in 1969	8 39.88 in 2009
9 76.5 in 1995	72.5 in 1906	9 70.64 in 2003	9 41.68 in 1918
10 76.4 in 1991	10 72.8 in 1983	10 70.29 in 1968	10 41.72 in 1938
	72.8 in 1969		
	72.8 in 1940		
	72.8 in 1909		

Normal Temperature for the Year at FMY = 75.4°

Normal Rainfall for the Year at FMY = 57.41 inches

---

For more Climate information visit our web site at the following link:  
<https://www.weather.gov/tampabay> and then go to the Climate and Past Weather drop down menu above the graphical forecast images.