



## NOAA - National Weather Service

Tampa Bay Area

2525 14th Avenue SE, Ruskin, Florida 33570

813-645-2323 <https://weather.gov/tampabay>

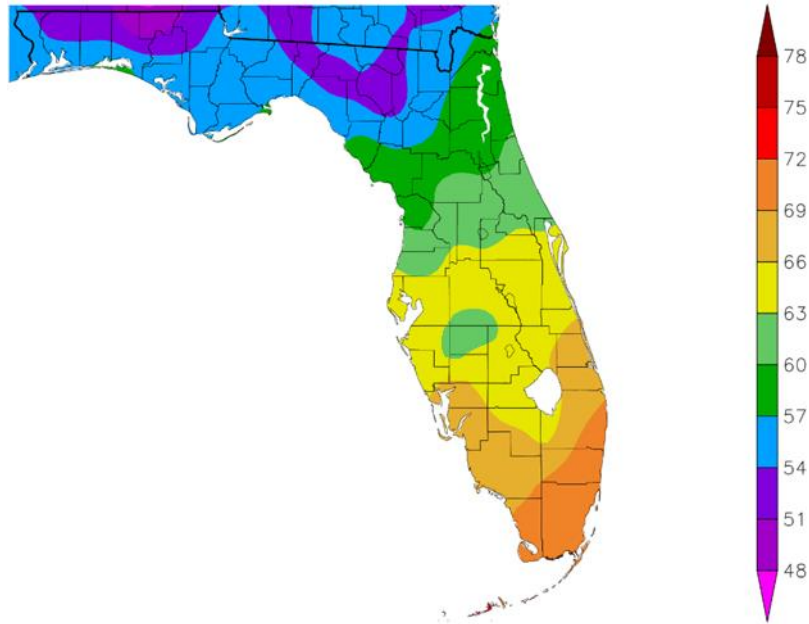
### December and 2024 Climate Summary for West Central and Southwest Florida

In December 2024 we saw a series of cold fronts move across the region with temperatures warming up ahead of them and then falling for a few days behind each. Overall, for the month, temperatures ended up averaging about 1.5 degrees below normal to 1.5 degrees above normal.

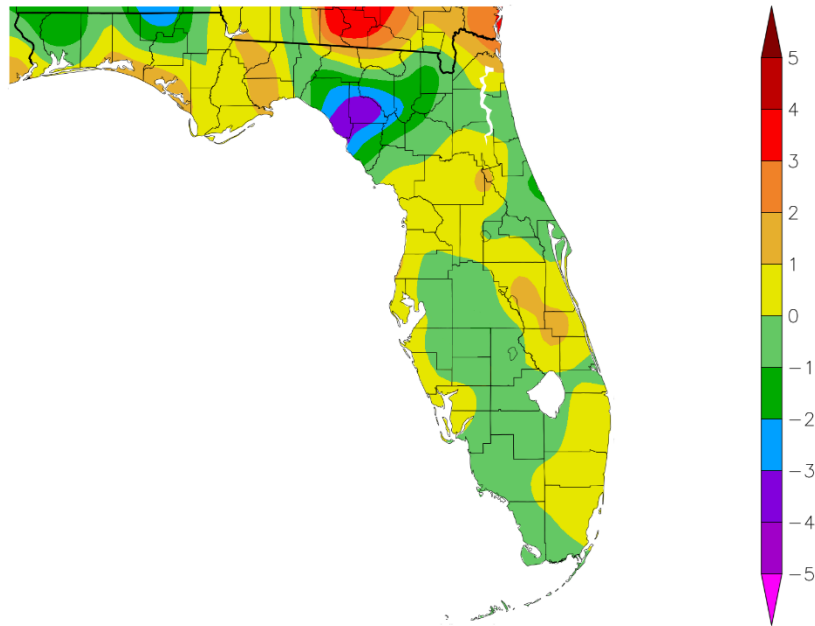
#### DECEMBER TEMPERATURE (°F) :

Location	December 2024 Rank	Avg Temp	Normal Dec Temp	Dep fm Normal	Records Began
Fort Myers Area	48th Warmest	67.5°	67.3°	+0.2°	Jan 1902
Punta Gorda Area	36th Warmest (tie)	67.0°	65.8°	+1.2°	May 1914
Sarasota-Bradenton Area	30th Warmest (tie)	65.8°	65.2°	+0.6°	Jan 1911
Venice	30th Warmest	65.1°	64.9°	+0.2°	May 1955
Winter Haven Area	34th Warmest (tie)	64.9°	64.6°	+0.3°	Mar 1941
Tampa Area	91st Coolest (tie)	64.8°	64.9°	-0.1°	Apr 1890
St Petersburg Area	57th Coolest	64.4°	65.1°	-0.7°	Aug 1914
Lakeland Area	62nd Coolest (tie)	64.3°	64.8°	-0.5°	Jan 1915
Tarpon Springs	42nd Warmest	64.0°	62.4°	+1.6°	Jan 1892
Plant City	74th Coolest (tie)	63.7°	65.0°	-1.3°	Sep 1892
Myakka River State Pk	25th Coolest	63.2°	64.8°	-1.6°	Mar 1956
Bartow	45th Coolest (tie)	63.1°	63.6°	-0.5°	Jun 1892
Wauchula	42nd Coolest	62.9°	63.0°	-0.1°	Jan 1933
St. Leo	47th Warmest	62.9°	62.1°	+0.8°	Apr 1895
Brooksville Area	70th Warmest (tie)	60.3°	60.3°	0.0°	Jan 1892
Inverness 3 SE	30th Warmest	60.1°	59.0°	+1.1°	Jul 1948
Chiefland 5 ESE	35th Coolest	57.1°	57.4°	-0.3°	Jul 1956

Temperature (F)  
12/1/2024 - 12/31/2024



Departure from Normal Temperature (F)  
12/1/2024 - 12/31/2024



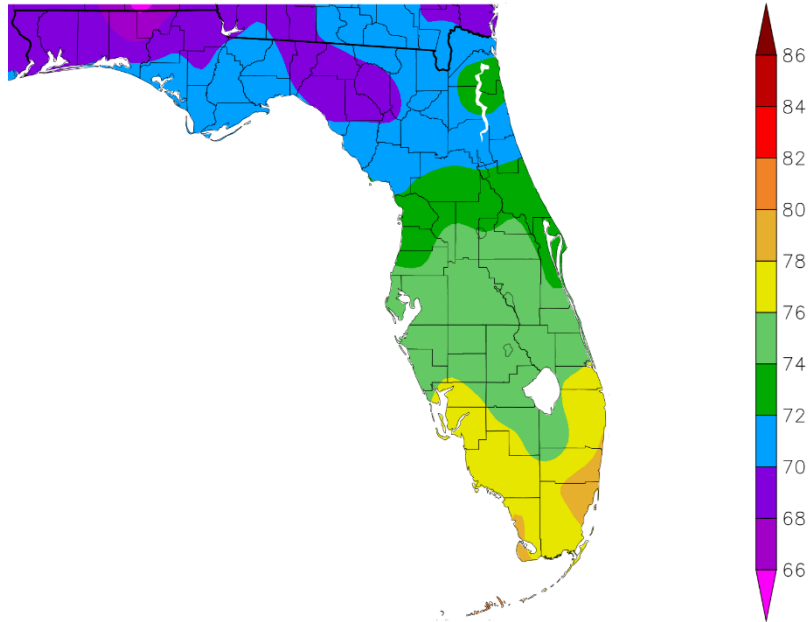
Graphics Source: NOAA Regional Climate Centers

As for 2024, it was a rather warm year with temperatures averaging about 1 to 3 degrees above normal which placed the official NWS sites in the Top Ten Warmest since records began, with two of them, Punta Gorda Area and St. Petersburg Area coming in at number one.

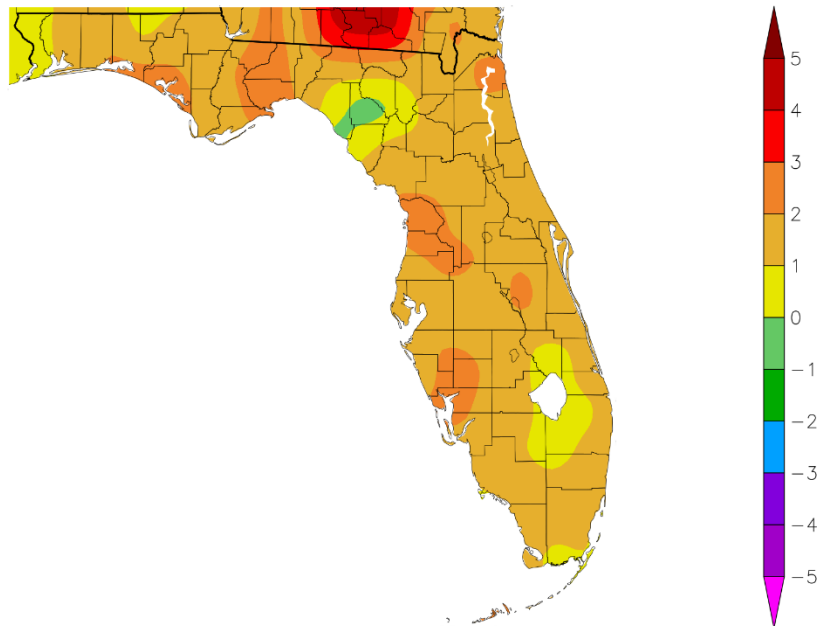
**2024 YEARLY AVERAGE TEMPERATURE (°F):**

Location	2024 Rank	Avg Temp	Normal Ann Temp	Dep fm Normal	Records Began
<b>Punta Gorda Area</b>	<b>1st Warmest</b>	<b>77.0°</b>	<b>74.3°</b>	<b>+2.7°</b>	<b>May 1914</b>
Fort Myers Area	8th Warmest	76.7°	75.4°	+1.3°	Jan 1902
<b>St Petersburg Area</b>	<b>1st Warmest (tie)</b>	<b>76.4°</b>	<b>74.7°</b>	<b>+1.7°</b>	<b>Aug 1914</b>
Plant City	4th Warmest	76.1°	74.3°	+1.8°	Sep 1892
Winter Haven Area	4th Warmest	75.8°	74.6°	+1.2°	Mar 1941
Venice	4th Warmest (tie)	75.7°	73.7°	+2.0°	May 1955
Tampa Area	9th Warmest	75.5°	74.5°	+1.0°	Apr 1890
Lakeland Area	6th Warmest	75.4°	73.9°	+1.5°	Jan 1915
Sarasota-Bradenton Area	6th Warmest	75.1°	74.1°	+1.0°	Jan 1911
Tarpon Springs	5th Warmest	74.5°	72.9°	+1.6°	Jan 1892
Bartow	7th Warmest	74.3°	73.1°	+1.2°	Jun 1892
Wauchula	10th Warmest (tie)	74.0°	72.4°	+1.6°	Jan 1933
Myakka River State Pk	15th Warmest	73.8°	73.6°	+0.2°	Mar 1956
St. Leo	7th Warmest (tie)	73.7°	71.9°	+1.8°	Apr 1895
Brooksville Area	10th Warmest (tie)	72.7°	70.7°	+2.0°	Jan 1892
Inverness 3 SE	4th Warmest	72.5°	69.8°	+2.7°	Jul 1948
Chiefland 5 ESE	8th Warmest	70.7°	69.2°	+1.5°	Jul 1956

Temperature (F)  
1/1/2024 - 12/31/2024



Departure from Normal Temperature (F)  
1/1/2024 - 12/31/2024

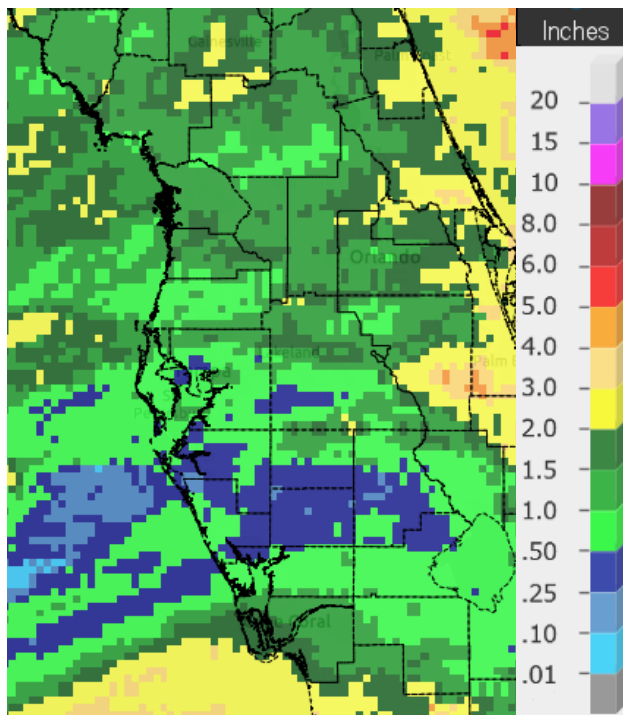


Graphics Source: NOAA Regional Climate Centers

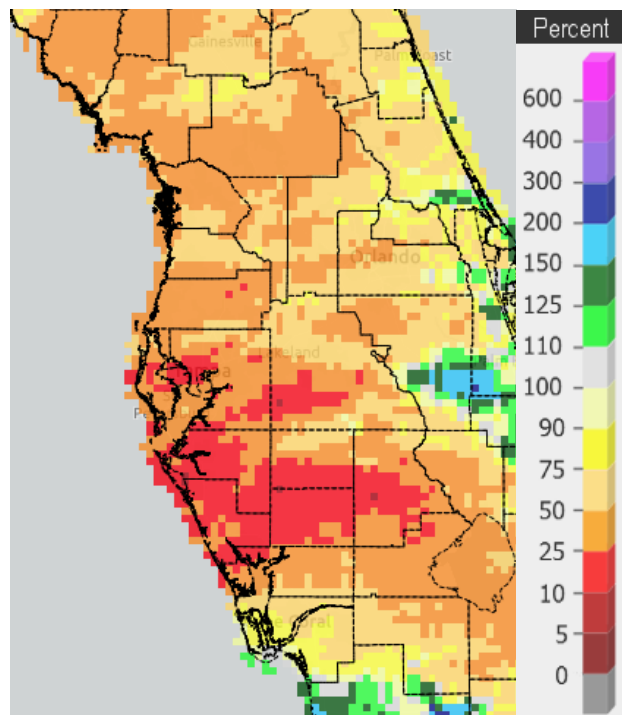
Taking a look at rainfall, December saw limited amounts with most of the area less than 50 percent of normal for the month, but it would have been even worse if not for some showers and thunderstorms during the last few days of the month.

**DECEMBER RAINFALL (inches):**

Location	December 2024 Rank	Rain Total	Normal Dec Rain	Dep fm Normal	Records Began
Tarpon Springs	51st Driest	1.52	2.56	-1.04	Jan 1892
Fort Myers Area	71st Driest	1.41	1.90	-0.49	Jan 1902
Winter Haven Area	37th Driest (tie)	1.39	2.68	-1.29	Mar 1941
Wauchula	37th Driest (tie)	1.16	2.13	-0.97	Jan 1933
Lakeland Area	34th Driest	1.00	2.61	-1.61	Jan 1915
Brooksville Area	30th Driest (tie)	0.88	2.56	-1.68	Jan 1892
St. Petersburg Area	33rd Driest (tie)	0.87	2.39	-1.52	Aug 1914
Tampa Area	31st Driest	0.78	2.56	-1.78	Apr 1890
Bartow	30th Driest (tie)	0.76	2.16	-1.40	Jun 1892
St. Leo	25th Driest	0.66	2.53	-1.87	Apr 1895
Inverness 3 SE	7th Driest	0.65	2.48	-1.83	Jul 1948
Chiefland 5 ESE	6th Driest	0.61	3.25	-2.64	Jul 1956
Punta Gorda Area	24th Driest	0.55	1.99	-1.44	May 1914
Myakka River State Pk	16th Driest	0.54	2.51	-1.97	Sep 1943
Plant City	16th Driest	0.51	2.54	-2.03	Sep 1892
Venice	9th Driest	0.49	2.31	-1.82	May 1955
Sarasota-Bradenton Area	4th Driest	0.18	2.33	-2.15	Jan 1911



**December 2024 Rainfall**



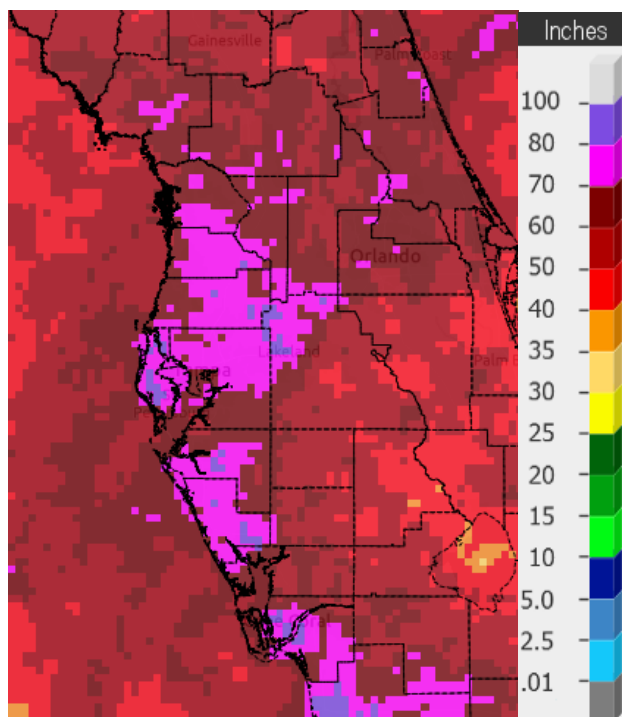
**Percent of Normal**

As for 2024, much of the region saw well above normal rainfall (green/blue areas on the right map below) thanks to three hurricanes, especially across the Nature Coast and coastal counties from around the Tampa Bay area southward. Some interior areas however were slightly below normal (yellow areas on right map below).

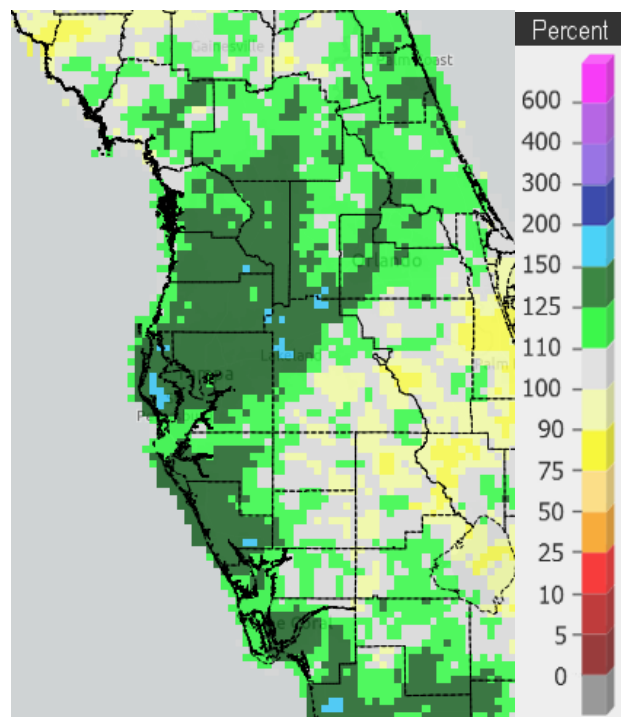
**2024 RAINFALL (inches):**

Location	2024 Rank	2024 Rain Total	Normal Ann Rain	Dep fm Normal	Records Began
<b>Fort Myers Area</b>	<b>1st Wettest</b>	<b>80.45</b>	<b>57.41</b>	<b>+23.04</b>	<b>Jan 1902</b>
<b>Tampa Area</b>	<b>1st Wettest</b>	<b>80.29</b>	<b>49.48</b>	<b>+30.81</b>	<b>Apr 1890</b>
Sarasota-Bradenton Area	*4th Wettest	*78.07	49.05	+29.02	Jan 1911
Lakeland Area	2nd Wettest	73.18	56.82	+16.36	Jan 1915
Plant City	9th Wettest	70.06	56.11	+13.95	Sep 1892
Myakka River State Pk	17th Wettest	67.04	61.07	+5.97	Sep 1943
Venice	5th Wettest	66.51	51.27	+15.24	May 1955
St. Leo	15th Wettest	65.78	53.46	+12.32	Apr 1895
Brooksville Area	31st Wettest	62.08	51.94	+10.14	Jan 1892
Tarpon Springs	29th Wettest	61.16	54.29	+6.87	Jan 1892
Inverness 3 SE	14th Wettest	60.04	52.39	+7.65	Jul 1948
Wauchula	23rd Wettest	56.62	52.00	+4.62	Jan 1933
Bartow	58th Wettest	53.82	50.88	+2.94	Jun 1892
Chiefland 5 ESE	17th Driest	51.70	57.10	-5.40	Jul 1956
Punta Gorda Area	45th Driest	50.84	52.97	-2.13	May 1914
Winter Haven Area	38th Wettest	48.02	46.12	+1.90	Mar 1941

\* Rainfall was missing on August 5th (during Hurricane Debby) and October 10th (during Hurricane Milton) at Sarasota-Bradenton due to equipment failure. Radar estimates and local rain gauges indicate that an additional 3 to 5 inches of rain fell on these days which could have made this the Wettest Year on record.



**2024 Rainfall**



**Percent of Normal**

On the following pages are tables of the Top Ten Warmest, Coolest, Wettest, and Driest Decembers and Years at some official NWS locations, which include the average/total for this December and 2024 where available, and the 1991-2020 Normal temperature and rainfall for the month of December and Annually.

**CHIEFLAND 5 ESE** (Records began in July 1956):

Warmest Decembers		Coolest Decembers		Wettest Decembers		Driest Decembers	
1	65.0 in 2021	1	47.7 in 2010	1	11.85 in 2018	1	0.00 in 1956
2	64.7 in 1971	2	48.0 in 1963	2	9.84 in 1964	2	0.04 in 2015
3	63.7 in 1998	3	50.2 in 1989	3	9.68 in 1997	3	0.42 in 2001
4	63.7 in 1984	4	51.3 in 1960	4	8.55 in 2023		0.42 in 1984
5	62.1 in 1982	5	52.2 in 2005	5	8.39 in 2005	5	0.51 in 2011
6	61.9 in 1990	6	52.3 in 2003	6	7.77 in 1996	<b>6</b>	<b>0.61 in 2024</b>
7	61.6 in 1956	7	52.5 in 1993	7	7.47 in 2019	7	0.66 in 2010
8	61.5 in 2001	8	52.9 in 1980	8	6.66 in 1967	8	0.71 in 2021
9	61.4 in 2006	9	53.0 in 1985	9	6.52 in 1983	9	0.72 in 1980
	61.4 in 1991		53.0 in 1968	10	6.20 in 1969	10	0.78 in 1985
...		...					
<b>29</b>	<b>57.1 in 2024</b>	<b>35</b>	<b>57.1 in 2024</b>				

Normal Temperature for December at CHIF1 = 57.4°  
 Normal Rainfall for December at CHIF1 = 3.25 inches

-----

Warmest Years		Coolest Years		Wettest Years		Driest Years	
1	72.0 in 1998	1	66.5 in 2010	1	99.47 in 1964	1	40.77 in 2008
2	71.8 in 2020	2	67.0 in 1969	2	77.29 in 1959	2	41.70 in 2011
3	71.6 in 1990	3	67.4 in 1963	3	76.86 in 2018	3	41.85 in 2000
4	71.5 in 2018	4	67.7 in 1966	4	74.06 in 2004	4	43.05 in 2006
5	71.3 in 2023	5	68.0 in 1976	5	70.31 in 1996	5	45.45 in 1990
6	71.1 in 1991	6	68.2 in 1958	6	69.40 in 1983	6	45.90 in 2022
7	70.8 in 1982	7	68.4 in 2000	7	68.98 in 1965	7	46.69 in 2007
<b>8</b>	<b>70.7 in 2024</b>		68.4 in 1962	8	67.91 in 1982	8	47.05 in 1999
9	70.9 in 2021	9	68.5 in 1996	9	67.59 in 1966	9	48.04 in 1977
10	70.5 in 2022		68.5 in 1977	10	67.33 in 1957	10	49.21 in 1972
						11	49.50 in 2020
						12	50.43 in 2023
						13	50.70 in 1989
						14	51.15 in 1963
						15	51.24 in 1981
						16	51.35 in 2010
						<b>17</b>	<b>51.70 in 2024</b>

Normal Temperature for the Year at CHIF1 = 69.2°  
 Normal Rainfall for the Year at CHIF1 = 57.10 inches

-----

**INVERNESS 3 SE** (Records began in July 1948):

Warmest Decembers		Coolest Decembers		Wettest Decembers		Driest Decembers	
1	69.1 in 2015	1	47.7 in 2010	1	11.23 in 2018	1	0.11 in 1984
2	67.0 in 1948	2	50.1 in 1989	2	10.46 in 1997	2	0.14 in 2011
3	66.8 in 1971	3	52.4 in 2002	3	7.80 in 1953	3	0.26 in 1956
4	66.3 in 2016	4	54.1 in 2005	4	6.64 in 2002	4	0.42 in 1998
5	65.4 in 2021	5	54.3 in 1963	5	6.37 in 1973	5	0.50 in 2016
6	65.3 in 1949	6	54.4 in 1993	6	5.40 in 1969	6	0.63 in 2001
7	64.9 in 1967	7	55.0 in 1960	7	5.30 in 1977	<b>7</b>	<b>0.65 in 2024</b>
8	64.4 in 1956	8	55.4 in 2000	8	5.23 in 1972	8	0.73 in 2010
	64.4 in 1951	9	55.5 in 2003	9	5.08 in 2023	9	0.75 in 1961
10	64.3 in 2007	10	55.9 in 1997	10	5.05 in 1981	10	0.77 in 2024
...		...					
<b>30</b>	<b>60.1 in 2024</b>	<b>36</b>	<b>60.1 in 2024</b>				

Normal Temperature for December at INVF1 = 59.0  
 Normal Rainfall for December at INVF1 = 2.48 inches

Warmest Years		Coolest Years		Wettest Years		Driest Years	
1	73.4 in 2015	1	68.8 in 1988	1	87.00 in 1960	1	35.66 in 1999
2	73.0 in 2020	2	68.9 in 2010	2	77.45 in 2021	2	36.50 in 1956
3	72.6 in 1953	3	69.0 in 1996	3	76.21 in 1953	3	37.34 in 1990
<b>4</b>	<b>72.5 in 2024</b>	4	69.3 in 1995	4	75.47 in 1982	4	38.22 in 2000
5	72.4 in 2022	5	69.4 in 2005	5	69.77 in 1959	5	40.35 in 2006
6	72.3 in 2019	6	69.6 in 1992	6	68.72 in 1964	6	42.22 in 1998
7	72.2 in 1975	7	69.7 in 1993	7	68.65 in 2018	7	43.28 in 1955
	72.2 in 1974	8	69.8 in 1981	8	65.24 in 1958	8	44.24 in 1961
	72.2 in 1959		68.8 in 1977	9	63.25 in 2002	9	44.29 in 1954
	72.2 in 1957	10	69.9 in 2001	10	62.76 in 1992	10	45.17 in 2013
				11	61.52 in 1965		
				12	61.21 in 2014		
				13	61.00 in 2003		
				<b>14</b>	<b>60.04 in 2024</b>		

Normal Temperature for the Year at INVF1 = 69.8°  
 Normal Rainfall for the Year at INVF1 = 52.39 inches



**BROOKSVILLE AREA** (Records began in January 1892):

Warmest Decembers	Coollest Decembers	Wettest Decembers	Driest Decembers
1 70.5 in 2015	1 47.9 in 2010	1 10.10 in 1997	1 0.01 in 1955
2 70.1 in 1931	2 53.9 in 1935	2 9.23 in 2018	2 0.04 in 2015
3 68.6 in 1971	3 54.3 in 2003	3 8.30 in 1930	3 0.08 in 2011
4 67.1 in 1948	4 54.4 in 1989	4 8.10 in 1953	4 0.21 in 1908
5 66.8 in 2021	5 54.7 in 2005	5 6.91 in 1925	5 0.27 in 1910
66.8 in 1926	54.7 in 1903	6 6.40 in 1969	6 0.32 in 1946
7 66.5 in 1932	7 54.8 in 1930	7 6.38 in 1983	0.32 in 1932
8 66.4 in 1982	8 54.9 in 1963	8 5.99 in 2002	8 0.33 in 1956
9 66.3 in 1940	9 55.3 in 1985	9 5.68 in 1973	9 0.37 in 1992
10 66.2 in 1933	10 55.4 in 1910	10 5.60 in 1905	0.37 in 1990
...	...		...
<b>70 60.3 in 2024</b>	<b>50 60.3 in 2024</b>		<b>30 0.88 in 2024</b>
60.3 in 1914	60.3 in 1914		0.88 in 1999
			0.88 in 1928

Normal Temperature for December at BKV = 60.3°  
 Normal Rainfall for December at BKV = 2.56 inches

-----

Warmest Years	Coollest Years	Wettest Years	Driest Years
1 74.3 in 1927	1 67.9 in 2010	1 80.17 in 1959	1 35.63 in 2010
2 73.7 in 1929	2 68.7 in 1920	2 79.39 in 1912	2 36.58 in 2000
3 73.6 in 2015	3 69.4 in 2000	3 77.49 in 1960	3 37.46 in 1954
4 73.4 in 2020	4 69.5 in 2004	4 75.09 in 1945	4 37.83 in 1927
5 73.3 in 1948	5 69.6 in 2003	5 72.34 in 1982	5 38.08 in 1955
6 73.1 in 2023	6 69.7 in 2005	6 71.91 in 1928	6 38.20 in 1931
7 73.0 in 2019	7 69.9 in 1894	7 71.35 in 1964	7 39.62 in 2006
8 72.9 in 1949	8 70.0 in 2008	8 70.98 in 1995	8 40.48 in 1951
72.9 in 1949	9 70.1 in 1999	9 70.12 in 1906	9 40.70 in 1977
<b>10 72.7 in 2024</b>	70.1 in 1924	10 69.70 in 1983	10 41.10 in 1956
72.7 in 1946		...	
		<b>31 62.08 in 2024</b>	

Normal Temperature for the Year at BKV = 70.7°  
 Normal Rainfall for the Year at BKV = 51.94 inches

-----

**ST LEO** (Records began in April 1895):

Warmest Decembers	Coollest Decembers	Wettest Decembers	Driest Decembers
1 70.6 in 2015	1 51.4 in 2010	1 13.99 in 1997	1 0.13 in 1984
2 69.6 in 1931	2 52.1 in 1935	2 10.68 in 2002	0.13 in 1906
3 68.0 in 2021	3 53.0 in 1930	3 9.17 in 2018	3 0.14 in 2016
4 67.7 in 2007	4 54.1 in 1903	4 7.50 in 1900	4 0.17 in 1933
5 67.6 in 1948	5 54.2 in 1910	5 7.43 in 1981	5 0.18 in 1938
6 67.5 in 2001	6 55.1 in 1917	6 6.83 in 1969	6 0.22 in 2011
	7 56.6 in 1989	7 6.47 in 1983	0.22 in 1990
8 67.3 in 2006	8 56.7 in 1909	8 6.16 in 1953	8 0.23 in 1932
9 67.2 in 1998	9 57.0 in 1960	9 5.99 in 1907	0.23 in 1908
10 66.9 in 1982	10 57.2 in 1927	10 5.67 in 1930	10 0.31 in 1928
...	57.2 in 1895		...
<b>47 62.9 in 2024</b>	<b>79 62.9 in 2024</b>		<b>25 0.66 in 2024</b>

Normal Temperature for December at STLF1 = 62.1°  
 Normal Rainfall for December at STLF1 = 2.53 inches

-----

Warmest Years	Coollest Years	Wettest Years	Driest Years
1 74.5 in 1998	1 69.3 in 1930	1 81.93 in 1945	1 36.61 in 1961
2 74.4 in 1990	2 69.5 in 1920	2 80.06 in 1900	2 39.27 in 2000
	3 69.6 in 2010	3 79.57 in 1953	3 40.49 in 1932
	69.6 in 1910	4 75.57 in 1983	4 41.37 in 1955
4 74.1 in 1982	5 69.9 in 1931	5 75.34 in 1960	5 41.69 in 1908
5 73.9 in 2007	6 70.0 in 1928	6 72.45 in 1982	6 42.02 in 1990
6 73.8 in 2020	7 70.2 in 1903	7 71.29 in 2003	7 42.62 in 1952
<b>7 73.7 in 2024</b>	8 70.3 in 1968	8 70.41 in 1959	8 42.98 in 1980
	70.3 in 1940	9 69.85 in 1934	9 43.44 in 2006
	70.3 in 1917	10 69.68 in 2002	10 43.47 in 1967
		11 68.83 in 1901	
		12 68.51 in 1997	
		13 68.46 in 1947	
		14 66.95 in 1979	
		<b>15 65.78 in 2024</b>	

Normal Temperature for the Year at STLF1 = 71.9°  
 Normal Rainfall for the Year at STLF1 = 53.46 inches

-----

**TARPON SPRINGS** (Records began in January 1892):

Warmest Decembers	Coollest Decembers	Wettest Decembers	Driest Decembers
1 72.8 in 1931	1 50.9 in 2010	1 15.60 in 1997	1 0.02 in 1984
2 71.4 in 2015	2 53.1 in 1935	2 12.27 in 2002	2 0.12 in 2016
3 68.6 in 1971	3 53.3 in 1903	3 10.00 in 2018	3 0.14 in 1946
4 68.2 in 1998	4 53.6 in 1963	4 9.08 in 1983	4 0.17 in 1928
5 67.9 in 1982	5 55.0 in 1910	5 7.79 in 1969	5 0.19 in 2000
6 67.6 in 2016	6 55.6 in 1960	6 7.48 in 1973	6 0.20 in 1938
67.6 in 2001	55.6 in 1917	7 6.95 in 1953	7 0.25 in 1906
8 67.5 in 2021	8 55.9 in 1930	8 5.75 in 1930	8 0.28 in 1908
9 67.2 in 2007	9 56.3 in 1989	9 5.47 in 1989	9 0.31 in 2011
67.2 in 2006	10 56.5 in 2004	10 5.34 in 1907	10 0.35 in 1933
67.2 in 1992		...	...
...	...	<b>80 1.52 in 2024</b>	<b>51 1.52 in 2024</b>
<b>42 64.0 in 2024</b>	<b>83 64.0 in 2024</b>		

Normal Temperature for December at TRPF1 = 62.4°  
 Normal Rainfall for December at TRPF1 = 2.74 inches

-----

Warmest Years	Coollest Years	Wettest Years	Driest Years
1 74.9 in 2019	1 69.5 in 1895	1 83.20 in 1959	1 32.85 in 2007
2 74.8 in 1990	2 69.6 in 1910	2 77.78 in 1957	2 32.87 in 1956
3 74.7 in 1994	3 69.9 in 1963	3 74.81 in 1960	3 33.48 in 1927
4 74.6 in 2015	4 70.0 in 1940	4 73.83 in 1983	4 35.39 in 1952
<b>5 74.5 in 2024</b>	5 70.1 in 1892	5 68.67 in 2012	5 36.66 in 2003
6 74.4 in 2017	6 70.2 in 1968	6 67.64 in 1969	6 38.21 in 1967
74.4 in 1997	70.2 in 1896	7 67.43 in 2019	7 38.65 in 1907
74.4 in 1991	8 70.3 in 2010	8 67.00 in 1925	8 39.65 in 1902
9 74.2 in 1998	70.3 in 1969	9 66.98 in 1900	9 40.15 in 1908
10 74.1 in 1932	10 70.5 in 1958	10 66.61 in 1997	10 40.50 in 1976
	70.5 in 1904	...	
		<b>29 61.16 in 2024</b>	

Normal Temperature for the Year at TRPF1 = 72.9°  
 Normal Rainfall for the Year at TRPF1 = 54.29 inches

-----

**TAMPA AREA** (Records began in April 1890):

Warmest Decembers	Coollest Decembers	Wettest Decembers	Driest Decembers
1 73.4 in 2015	1 53.2 in 2010	1 15.57 in 1997	1 0.07 in 1984
2 72.3 in 1931	2 54.5 in 1935	2 14.10 in 2002	2 0.09 in 1946
3 71.5 in 2021	3 54.9 in 1963	3 8.69 in 2018	0.09 in 1906
4 70.1 in 2016	4 55.5 in 1910	4 7.36 in 1907	4 0.13 in 1933
5 69.5 in 2006	5 55.8 in 1903	5 7.04 in 1941	5 0.19 in 2011
6 69.3 in 1971	6 56.1 in 1989	6 6.66 in 1950	0.19 in 1990
7 68.8 in 2001	7 56.7 in 1930	7 5.99 in 1930	7 0.20 in 1944
8 68.5 in 2013	8 56.8 in 1917	8 5.52 in 1973	8 0.21 in 1956
9 68.4 in 2007	9 57.5 in 1980	9 5.17 in 1969	9 0.29 in 1938
10 68.0 in 1998	57.5 in 1909	10 5.14 in 1905	10 0.30 in 1949
68.0 in 1948			...
...	...		<b>31 0.78 in 2024</b>
<b>44 64.8 in 2024</b>	<b>91 64.8 in 2024</b>		
64.8 in 1967	64.8 in 1967		

Normal Temperature for December at TPA = 64.9°  
 Normal Rainfall for December at TPA = 2.56 inches

-----

Warmest Years	Coollest Years	Wettest Years	Driest Years
1 76.4 in 2023	1 69.8 in 1968	<b>1 80.29 in 2024</b>	1 28.89 in 1956
76.4 in 2022	2 70.1 in 1901	2 76.57 in 1959	2 29.85 in 2000
3 76.3 in 2020	3 70.3 in 1910	3 70.43 in 1957	3 31.47 in 1977
76.3 in 2017	4 70.4 in 1981	4 67.71 in 1997	4 32.25 in 1908
5 76.2 in 2015	5 70.5 in 1969	5 67.19 in 1912	5 32.31 in 1984
6 76.1 in 2021	6 71.0 in 1976	6 66.93 in 1894	6 33.90 in 1974
7 75.8 in 2019	71.0 in 1966	7 66.65 in 1945	7 34.32 in 1999
8 75.6 in 2018	71.0 in 1940	8 66.46 in 1979	8 34.39 in 1990
<b>9 75.5 in 2024</b>	71.0 in 1895	9 65.95 in 1947	9 34.77 in 1927
10 75.3 in 1990	71.0 in 1892	10 65.44 in 1960	10 34.87 in 1944

Normal Temperature for the Year at TPA = 74.5°  
 Normal Rainfall for the Year at TPA = 49.48 inches

-----

**ST PETERSBURG AREA** (Records began in August 1914):

Warmest Decembers		Coolest Decembers		Wettest Decembers		Driest Decembers	
1	74.2 in 1931	1	56.4 in 2010	1	17.41 in 2002	1	0.07 in 1984
2	71.9 in 1971	2	56.7 in 1989	2	14.62 in 1997	2	0.14 in 1949
3	71.0 in 2021	3	56.9 in 1935	3	7.00 in 1983		0.14 in 1938
4	70.6 in 2015	4	57.1 in 1963	4	6.77 in 1973	4	0.24 in 1990
5	69.7 in 1998	5	58.7 in 1930	5	6.67 in 1930	5	0.28 in 2016
6	69.5 in 2016	6	58.8 in 1917	6	6.45 in 1969	6	0.38 in 2015
	69.5 in 1948	7	59.2 in 1962	7	6.03 in 1914	7	0.41 in 1924
8	69.4 in 2013	8	59.6 in 1950	8	5.92 in 1953	8	0.43 in 1932
9	69.3 in 2007	9	60.0 in 1954	9	5.84 in 2018	9	0.44 in 1946
10	69.2 in 2001	10	60.4 in 1944	10	5.49 in 1950	10	0.45 in 2011
...		...				...	
<b>51</b>	<b>64.4 in 2024</b>	<b>57</b>	<b>64.4 in 2024</b>			<b>33</b>	<b>0.87 in 2024</b>
							0.87 in 2007
							0.87 in 1998

Normal Temperature for December at SPG = 65.1°  
 Normal Rainfall for December at SPG = 2.39 inches

-----

Warmest Years		Coolest Years		Wettest Years		Driest Years	
<b>1</b>	<b>76.4 in 2024</b>	1	71.8 in 1940	1	87.62 in 1959	1	30.41 in 1984
	76.4 in 2020	2	72.3 in 1920	2	79.30 in 1953	2	32.57 in 1966
	76.4 in 2015	3	72.4 in 1968	3	73.88 in 1957	3	33.54 in 2006
4	76.3 in 2023		72.4 in 1963	4	72.81 in 1997	4	33.63 in 2023
5	76.1 in 2017	5	72.5 in 1996	5	72.59 in 1947	5	34.01 in 1927
6	76.0 in 2021	6	72.6 in 1917	6	70.12 in 1954	6	34.88 in 1956
	76.0 in 2013	7	72.7 in 1966	7	69.66 in 1988	7	36.34 in 1944
8	75.7 in 2005		72.7 in 1954	8	67.23 in 1922	8	36.40 in 2021
9	75.6 in 1946		72.7 in 1915	9	65.00 in 1952	9	36.52 in 2007
10	75.5 in 2012	10	72.8 in 1983	10	64.87 in 1995	10	36.62 in 1923
	75.5 in 1972						
	75.5 in 1933						
	75.5 in 1932						

Normal Temperature for the Year at SPG = 74.7°

Total Rainfall for 2024 = 54.34 inches, but Several Days Missing in Aug/Sep  
 Normal Rainfall for the Year at SPG = 46.65 inches

**PLANT CITY** (Records began in September 1892):

Warmest Decembers	Coollest Decembers	Wettest Decembers	Driest Decembers
1 73.0 in 2015	1 51.1 in 1935	1 14.75 in 1997	1 0.00 in 1908
2 70.6 in 1971	2 53.0 in 2010	2 9.63 in 2002	2 0.05 in 1906
3 70.5 in 2016	3 54.0 in 1930	3 7.94 in 2018	3 0.21 in 1932
4 69.7 in 2021	4 54.1 in 1910	4 7.62 in 1905	4 0.22 in 1984
5 69.6 in 1931	5 56.0 in 1989	5 6.57 in 1983	5 0.26 in 1987
6 68.9 in 1948	6 56.1 in 1963	6 6.47 in 1925	0.26 in 1917
7 68.4 in 2013	7 56.2 in 1903	7 6.14 in 1969	7 0.28 in 2016
8 67.9 in 1978	8 57.2 in 1915	8 6.06 in 1907	0.28 in 1962
9 67.7 in 2007	9 57.3 in 1901	9 6.04 in 1930	9 0.30 in 1933
10 67.6 in 1998	10 57.5 in 1917	10 5.80 in 1941	10 0.32 in 1956
...	...		0.32 in 1946
<b>43 63.7 in 2024</b>	<b>74 63.7 in 2024</b>		12 0.33 in 1944
63.7 in 1992	63.7 in 1992		13 0.36 in 1938
63.7 in 1933	63.7 in 1933		14 0.50 in 2015
63.7 in 1932	63.7 in 1932		0.50 in 1926
			<b>16 0.51 in 2024</b>

Normal Temperature for December at PLCF1 = 65.0°  
 Normal Rainfall for December at PLCF1 = 2.54 inches

-----

Warmest Years	Coollest Years	Wettest Years	Driest Years
1 76.8 in 2023	1 69.2 in 1930	1 86.68 in 1959	1 32.96 in 1961
2 76.6 in 2020	2 69.4 in 1931	2 79.20 in 1947	2 36.36 in 1909
76.6 in 2019	3 69.8 in 1940	3 78.25 in 1960	3 37.24 in 1956
<b>4 76.1 in 2024</b>	4 70.4 in 1928	4 76.88 in 2004	4 39.17 in 1977
5 75.8 in 2021	5 70.6 in 1942	5 75.82 in 1953	5 39.29 in 2007
6 75.7 in 2022	70.6 in 1935	6 71.97 in 1983	6 39.48 in 1981
7 75.0 in 2016	7 70.8 in 2010	7 71.76 in 1933	7 39.74 in 1990
8 74.9 in 2018	70.8 in 1926	8 70.65 in 1957	8 40.41 in 1927
9 74.2 in 1948	9 70.9 in 1976	<b>9 70.06 in 2024</b>	9 40.49 in 1908
10 74.1 in 1990	70.9 in 1932	10 69.35 in 1905	10 42.38 in 2000
74.1 in 1911			

Normal Temperature for the Year at PLCF1 = 74.3°  
 Normal Rainfall for the Year at PLCF1 = 56.11 inches

-----

**LAKELAND AREA** (Records began in January 1915):

Warmest Decembers	Coollest Decembers	Wettest Decembers	Driest Decembers
1 73.1 in 2015	1 53.2 in 2010	1 12.28 in 1997	1 Trace in 1917
2 72.8 in 1931	2 54.8 in 1935	2 11.74 in 2002	2 0.09 in 1944
3 70.2 in 2016	3 56.2 in 1963	3 8.13 in 2018	3 0.10 in 1924
4 70.0 in 1971	4 56.8 in 1989	4 7.04 in 1983	4 0.12 in 1938
5 69.1 in 2021	5 57.3 in 1960	5 6.15 in 1930	5 0.14 in 1962
6 68.6 in 2013	6 57.9 in 1930	6 6.09 in 1925	6 0.17 in 1987
7 68.4 in 2007	7 58.2 in 1950	7 5.51 in 1989	7 0.30 in 1932
8 68.0 in 1922	8 58.4 in 1954	8 5.33 in 1941	8 0.34 in 1984
9 67.9 in 2001	9 58.9 in 1980	9 5.21 in 1949	9 0.35 in 1990
10 67.8 in 1998	10 59.0 in 1969	10 4.53 in 1950	10 0.36 in 1943
...	59.0 in 1944	...	0.36 in 1933
<b>47 64.3 in 2024</b>	<b>62 64.3 in 2024</b>	<b>76 1.00 in 2024</b>	<b>34 1.00 in 2024</b>
64.3 in 1972	64.3 in 1972	1.00 in 2000	1.00 in 2000
64.3 in 1964	64.3 in 1964		

Normal Temperature for December at LLDF1 = 64.8°  
 Normal Rainfall for December at LLDF1 = 2.61 inches

-----

Warmest Years	Coollest Years	Wettest Years	Driest Years
1 76.0 in 2023	1 70.6 in 1968	1 78.15 in 2018	1 34.93 in 1927
2 75.7 in 2020	2 70.9 in 1969	<b>2 73.18 in 2024</b>	2 35.83 in 1961
75.7 in 2015	3 71.0 in 1966	3 70.24 in 1959	3 36.30 in 1954
4 75.6 in 2019	71.0 in 1958	4 69.72 in 1979	4 37.36 in 1985
75.6 in 1990	71.0 in 1940	5 68.82 in 2017	5 37.80 in 1967
<b>6 75.4 in 2024</b>	6 71.2 in 1970	6 67.13 in 1994	6 38.06 in 1962
7 75.3 in 2021	7 71.4 in 1960	7 66.92 in 2005	7 38.26 in 2000
8 75.2 in 2017	71.4 in 1920	8 66.58 in 2002	8 38.29 in 1972
75.2 in 1994	9 71.5 in 1963	9 66.13 in 2004	9 39.43 in 1990
10 75.0 in 2022	10 71.6 in 2010	10 65.42 in 1960	10 39.57 in 1984
			39.57 in 1981
			39.57 in 1942

Normal Temperature for the Year at LLDF1 = 73.9°  
 Normal Rainfall for the Year at LLDF1 = 56.82 inches

-----

**WINTER HAVEN AREA** (Records began in March 1941):

Warmest Decembers	Coollest Decembers	Wettest Decembers	Driest Decembers
1 72.4 in 2015	1 52.7 in 2010	1 12.52 in 2002	1 0.03 in 1987
2 70.8 in 1971	2 55.5 in 1963	2 9.79 in 1997	0.03 in 1984
3 70.3 in 2021	3 57.4 in 1989	3 6.91 in 2018	3 0.07 in 1990
4 69.5 in 1948	4 59.1 in 1962	4 6.44 in 1983	4 0.21 in 1956
5 69.2 in 2016	59.1 in 1960	5 5.35 in 1989	5 0.23 in 1962
6 68.4 in 1946	6 59.2 in 1968	6 4.75 in 1991	6 0.29 in 1944
7 68.1 in 1984	7 59.3 in 1950	7 3.88 in 1947	7 0.33 in 2011
8 68.0 in 2007	8 59.8 in 1944	8 3.87 in 1950	8 0.40 in 1991
68.0 in 1991	9 59.9 in 2000	9 3.77 in 1941	0.40 in 1968
68.0 in 1986	10 60.1 in 2003	10 3.63 in 1969	10 0.47 in 1943
...	60.1 in 1952	...	...
<b>34 64.9 in 2024</b>	<b>38 64.9 in 2024</b>	<b>44 1.39 in 2024</b>	<b>37 1.39 in 2024</b>
64.9 in 2012	64.9 in 2012	1.39 in 1961	1.39 in 1961

Normal Temperature for December at GIF = 64.6°  
 Normal Rainfall for December at GIF = 2.68 inches

-----

Warmest Years	Coollest Years	Wettest Years	Driest Years
1 76.6 in 2019	1 70.2 in 1968	1 73.28 in 1959	1 30.35 in 2000
2 76.2 in 2015	2 71.1 in 1981	2 69.61 in 1960	2 31.95 in 2006
3 76.1 in 2020	3 71.2 in 1963	3 65.94 in 1957	3 32.73 in 2009
<b>4 75.8 in 2024</b>	4 71.4 in 1977	4 65.09 in 1947	4 35.26 in 1985
75.8 in 1989	71.4 in 1969	5 64.90 in 1948	5 36.78 in 2007
6 75.7 in 1991	6 71.6 in 2010	6 63.55 in 1953	6 36.89 in 1980
7 75.4 in 2023	71.6 in 1958	7 62.94 in 1983	7 39.02 in 2021
8 75.3 in 2021	8 71.9 in 1962	8 62.73 in 1994	8 39.06 in 2017
9 75.1 in 2018	71.9 in 1960	9 62.10 in 1982	9 39.51 in 1972
75.1 in 2017	10 72.0 in 1966	10 61.77 in 2002	10 39.81 in 1961
		...	...
		<b>38 *48.02 in 2024</b>	<b>30 *48.02 in 2024</b>

Normal Temperature for the Year at GIF = 74.6°  
 Normal Rainfall for the Year at GIF = 46.12 inches

\* Rainfall was missing on October 10, 2024, but radar and surrounding observations only indicate that 0.25 inch or less fell on this day.



**BARTOW** (Records began in June 1892):

Warmest Decembers	Coollest Decembers	Wettest Decembers	Driest Decembers
1 72.4 in 2015	1 53.2 in 2010	1 13.31 in 2002	1 0.00 in 1906
2 71.0 in 2013	2 54.1 in 1910	2 11.38 in 1983	2 0.05 in 1932
3 69.2 in 1948	3 54.4 in 1903	3 10.70 in 1997	3 0.08 in 1933
4 69.0 in 2016	4 55.9 in 1915	4 8.25 in 1905	4 0.15 in 1944
69.0 in 2001	5 57.1 in 1909	5 6.45 in 2018	5 0.23 in 1962
69.0 in 1971	6 57.3 in 1963	6 6.35 in 1900	6 0.24 in 1987
7 68.5 in 2021	7 57.4 in 1954	7 5.50 in 1925	0.24 in 1956
8 68.4 in 1998	8 57.6 in 1989	8 5.25 in 1942	8 0.27 in 1990
9 68.2 in 2006	9 58.4 in 1960	9 5.14 in 1930	9 0.28 in 1984
10 67.8 in 1986	10 59.0 in 2020	10 5.07 in 1989	10 0.29 in 1946
...	...	...	...
<b>42 63.1 in 2024</b>	<b>45 63.1 in 2024</b>	<b>101 0.76 in 2024</b>	<b>30 0.76 in 2024</b>
63.1 in 1996	63.1 in 1996	0.76 in 1980	0.76 in 1980

Normal Temperature for December at BARF1 = 63.6°  
 Normal Rainfall for December at BARF1 = 2.16 inches

-----

Warmest Years	Coollest Years	Wettest Years	Driest Years
1 74.9 in 1998	1 70.8 in 1901	1 83.44 in 1959	1 34.10 in 2007
2 74.8 in 2023	2 71.2 in 1968	2 77.99 in 1983	2 35.87 in 2000
3 74.6 in 2020	71.2 in 1914	3 73.96 in 1930	3 36.43 in 1927
74.6 in 2012	4 71.3 in 1896	4 73.85 in 1960	4 37.19 in 1950
5 74.5 in 2019	5 71.5 in 1893	5 73.72 in 1957	5 37.51 in 2006
6 74.4 in 2017	6 71.6 in 1976	6 73.58 in 1947	6 40.72 in 1990
<b>7 74.3 in 2024</b>	71.6 in 1970	7 71.44 in 2002	7 41.00 in 1916
8 74.1 in 2021	71.6 in 1963	8 71.29 in 1924	8 41.41 in 1955
74.1 in 1997	71.6 in 1913	9 69.90 in 1903	9 42.29 in 1999
74.1 in 1982	10 71.9 in 1981	10 68.74 in 2022	10 42.48 in 1974
	71.9 in 1979	...	...
	71.9 in 1956	<b>58 53.82 in 2024</b>	<b>62 53.82 in 2024</b>
	71.9 in 1912		

Normal Temperature for the Year at BARF1 = 73.1°  
 Normal Rainfall for the Year at BARF1 = 50.88 inches

-----

**SARASOTA-BRADENTON AREA** (Records began in January 1911):

Warmest Decembers		Coolest Decembers		Wettest Decembers		Driest Decembers	
1	72.8 in 2015	1	53.0 in 2010	1	11.94 in 1997	1	0.00 in 1933
2	71.2 in 1931	2	54.9 in 1935	2	11.63 in 2002	2	0.03 in 1949
3	69.8 in 1971	3	56.8 in 1930	3	8.10 in 2018	3	0.17 in 2011
4	69.5 in 2006	4	57.4 in 1963	4	6.86 in 1914	<b>4</b>	<b>0.18 in 2024</b>
5	69.3 in 2021	5	58.0 in 1917	5	6.71 in 1977	5	0.19 in 1962
	69.3 in 2016	6	58.4 in 1915	6	6.23 in 1983	6	0.21 in 2013
7	69.1 in 2013	7	58.7 in 1989	7	6.21 in 1930	7	0.24 in 1984
8	68.8 in 2007		58.7 in 1976	8	5.80 in 1958	8	0.28 in 1923
9	68.7 in 2019	9	59.0 in 1944	9	5.72 in 1913	9	0.31 in 1938
10	68.6 in 1948	10	59.4 in 1985	10	5.58 in 1953	10	0.34 in 1946
			59.4 in 1980				
...		...					
<b>30</b>	<b>65.8 in 2024</b>	<b>77</b>	<b>65.8 in 2024</b>				
	65.8 in 1994		65.8 in 1994				
	65.8 in 1953		65.8 in 1953				
	65.8 in 1949		65.8 in 1949				

Normal Temperature for December at SRQ = 65.2°  
 Normal Rainfall for December at SRQ = 2.33 inches

-----

Warmest Years		Coolest Years		Wettest Years		Driest Years	
1	76.3 in 2020	1	70.6 in 1977	1	82.98 in 1957	1	27.13 in 2023
2	76.2 in 2019		70.6 in 1976	2	78.59 in 1959	2	29.45 in 1944
3	76.1 in 2023		70.6 in 1940	3	78.33 in 1997	3	31.98 in 1956
4	75.3 in 2016	4	70.9 in 2010	<b>*4</b>	<b>78.07 in 2024*</b>	4	32.19 in 1951
5	75.2 in 2015		70.9 in 1981	5	77.50 in 1912	5	33.23 in 2009
<b>6</b>	<b>75.1 in 2024</b>		70.9 in 1968	6	73.49 in 1960	6	34.00 in 1923
7	74.8 in 2021		70.9 in 1930	7	72.21 in 1922	7	34.32 in 2008
8	74.7 in 2022	8	71.0 in 1931	8	68.52 in 1943	8	36.97 in 1950
9	74.6 in 2017		71.0 in 1915	9	68.02 in 1983	9	37.45 in 2000
10	74.5 in 1994	10	71.1 in 1928	10	67.46 in 1958	10	38.87 in 1973

Normal Temperature for the Year at SRQ = 74.1°  
 Normal Rainfall for the Year at SRQ = 49.05 inches

*\* Rainfall was missing on August 5th and October 10th at Sarasota-Bradenton due to equipment failure. Radar estimates and local rain gauges indicate that an additional 3 to 5 inches of rain fell on these days which could have made this the Wettest Year on record.*

-----

**VENICE** (Records began in May 1955):

Warmest Decembers	Coollest Decembers	Wettest Decembers	Driest Decembers
1 73.1 in 1987	1 54.8 in 2010	1 9.48 in 1997	1 0.04 in 2016
2 72.9 in 2015	2 57.7 in 1989	2 7.39 in 2018	2 0.07 in 2011
3 70.9 in 1971	3 57.9 in 1963	3 6.50 in 1983	3 0.10 in 2014
4 70.7 in 2016	4 59.4 in 1976	4 6.00 in 2002	4 0.13 in 2013
5 70.2 in 2021	59.4 in 1960	5 5.34 in 2009	0.13 in 1991
6 69.3 in 1998	6 59.7 in 1981	6 5.25 in 1986	6 0.18 in 1987
7 69.1 in 2011	7 60.1 in 2003	7 4.94 in 2003	7 0.33 in 1962
8 68.6 in 1982	60.1 in 1962	8 4.16 in 1958	8 0.44 in 1984
9 68.3 in 2006	9 60.2 in 1975	9 4.12 in 1989	<b>9 0.49 in 2024</b>
10 68.2 in 2001	10 60.5 in 1973	10 3.85 in 1979	10 0.50 in 2021
...	...		
<b>30 65.1 in 2024</b>	<b>35 65.1 in 2024</b>		

Normal Temperature for December at VNCF1 = 64.9°  
 Normal Rainfall for December at VNCF1 = 2.31 inches

-----

Warmest Years	Coollest Years	Wettest Years	Driest Years
1 76.3 in 2023	1 70.9 in 1981	1 75.08 in 1995	1 29.07 in 1990
2 76.0 in 2012	2 71.2 in 1977	2 74.15 in 1957	2 29.72 in 2023
3 75.9 in 2095	3 71.8 in 1962	3 73.28 in 1959	3 32.46 in 2007
<b>4 75.7 in 2024</b>	4 71.9 in 1978	4 72.40 in 1983	4 35.52 in 1985
75.7 in 2015	5 72.0 in 1969	<b>5 66.51 in 2024</b>	5 36.50 in 1961
75.7 in 1998	72.0 in 1960	6 65.46 in 2003	6 36.69 in 1956
7 75.6 in 2011	7 72.1 in 1966	7 63.35 in 2005	7 37.23 in 1981
8 75.3 in 2020	72.1 in 1963	8 63.13 in 1992	8 38.45 in 2021
9 75.1 in 1997	72.1 in 1956	9 62.98 in 1969	9 38.50 in 2009
75.1 in 1994	10 72.3 in 1970	10 61.25 in 2017	10 39.49 in 2019

Normal Temperature for the Year at VNCF1 = 73.7°  
 Normal Rainfall for the Year at VNCF1 = 51.27 inches

-----

**MYAKKA RIVER STATE PARK** (Temperature records began in March 1956  
and Rainfall records began in Sep 1943):

Warmest Decembers	Coollest Decembers	Wettest Decembers	Driest Decembers
1 73.3 in 2015	1 53.4 in 2010	1 10.89 in 1997	1 0.03 in 1949
2 70.8 in 2016	2 55.9 in 1969	2 9.65 in 2002	2 0.10 in 1991
3 69.4 in 2013	3 57.0 in 1989	3 8.20 in 1983	3 0.16 in 1961
4 69.3 in 1998	4 57.2 in 1960	4 7.59 in 2018	4 0.17 in 2011
5 69.2 in 1971	5 57.3 in 1962	5 6.32 in 1958	5 0.19 in 1987
6 69.1 in 2006	6 58.7 in 1968	6 6.06 in 2009	6 0.22 in 2013
7 68.7 in 2007	7 59.1 in 1957	7 5.97 in 1977	0.22 in 1962
8 68.1 in 1982	8 59.9 in 2002	8 5.48 in 2003	8 0.25 in 1956
9 68.0 in 1991	9 60.0 in 2020	9 5.00 in 2015	9 0.29 in 1943
10 67.9 in 1992	60.0 in 1973	10 4.23 in 1989	10 0.36 in 1984
67.9 in 1986	...		11 0.41 in 1985
	<b>25 63.2 in 2024</b>		12 0.46 in 1970
			13 0.47 in 2014
			0.47 in 1993
			0.47 in 1944
			<b>16 0.54 in 2024</b>

Normal Temperature for December at MKCF1 = 64.8°  
Normal Rainfall for December at MKCF1 = 2.51 inches

-----

Warmest Years	Coollest Years	Wettest Years	Driest Years
1 76.0 in 2015	1 70.6 in 1962	1 82.31 in 1995	1 36.97 in 1961
2 75.5 in 2019	2 71.3 in 1958	2 80.36 in 1983	2 38.15 in 1956
3 75.2 in 1997	3 71.6 in 1970	3 78.82 in 2018	3 38.24 in 1955
4 75.0 in 1990	71.6 in 1960	4 77.59 in 1959	4 39.15 in 1944
5 74.8 in 1982	5 71.8 in 2010	5 76.72 in 1982	5 42.29 in 1950
6 74.6 in 2016	71.8 in 1977	6 76.60 in 2003	6 42.54 in 1946
74.6 in 1994	7 72.1 in 1981	7 76.52 in 1998	7 44.03 in 1985
8 74.5 in 2018	72.1 in 1976	8 76.04 in 1997	8 44.10 in 1986
74.5 in 1999	72.1 in 1973	9 75.62 in 1957	9 44.36 in 2021
10 74.1 in 2023	10 72.2 in 1988	10 71.72 in 2017	10 45.21 in 2000
74.1 in 2013		11 70.89 in 2022	
12 74.0 in 2012		12 70.46 in 1987	
74.0 in 2011		13 68.34 in 1958	
14 73.9 in 1993		14 68.05 in 1947	
<b>15 73.8 in 2024</b>		15 67.79 in 2013	
		16 67.57 in 1981	
		<b>17 67.04 in 2024</b>	

Normal Temperature for the Year at MKCF1 = 73.6°  
Normal Rainfall for the Year at MKCF1 = 61.07 inches

-----

**WAUCHULA** (Records began in January 1933):

Warmest Decembers		Coolest Decembers		Wettest Decembers		Driest Decembers	
1	72.0 in 2015	1	50.0 in 2010	1	7.89 in 2002	1	0.00 in 2001
2	70.0 in 1971	2	54.4 in 2009	2	6.29 in 1997	2	0.11 in 1938
3	69.8 in 2007	3	55.7 in 1935	3	6.10 in 2018	3	0.12 in 1956
4	68.7 in 2016	4	56.8 in 1963	4	5.57 in 2009	4	0.14 in 1933
	68.7 in 1948	5	57.0 in 2003	5	5.51 in 1986	5	0.20 in 2011
6	68.4 in 1940	6	58.5 in 1989	6	4.83 in 1977	6	0.21 in 1934
7	67.8 in 2006	7	58.6 in 2020	7	4.77 in 1958	7	0.22 in 2013
8	67.7 in 1986		58.6 in 2002	8	4.20 in 1940	8	0.28 in 1991
9	67.6 in 1946		58.6 in 1954	9	4.13 in 1950	9	0.31 in 2014
10	67.5 in 1941	10	58.7 in 2005	10	4.11 in 1989		0.31 in 1949
...		...		...		...	
<b>46</b>	<b>62.9 in 2024</b>	<b>42</b>	<b>62.9 in 2024</b>	<b>54</b>	<b>1.16 in 2024</b>	<b>37</b>	<b>1.16 in 2024</b>
					1.16 in 1964		1.16 in 1964

Normal Temperature for December at WAUF1 = 63.0°  
 Normal Rainfall for December at WAUF1 = 2.13 inches

-----

Warmest Years		Coolest Years		Wettest Years		Driest Years	
1	74.9 in 1990	1	70.8 in 1996	1	83.48 in 1953	1	29.56 in 2000
2	74.5 in 2008	2	70.9 in 2014	2	82.10 in 1947	2	36.59 in 2007
	74.5 in 1948	3	71.3 in 1954	3	69.13 in 1959	3	36.66 in 1981
4	74.4 in 2015	4	71.4 in 1981	4	68.89 in 1939	4	36.93 in 1961
5	74.3 in 1991		71.4 in 1968	5	67.34 in 1983	5	40.25 in 1989
	74.3 in 1933		71.4 in 1956	6	66.05 in 1998	6	40.27 in 1999
7	74.2 in 2009	7	71.5 in 2012	7	65.77 in 1997	7	41.39 in 2006
8	74.1 in 2023		71.5 in 2011	8	64.59 in 2022	8	42.06 in 1967
	74.1 in 1989	9	71.6 in 1976	9	63.91 in 1960	9	43.58 in 1950
<b>10</b>	<b>74.0 in 2024</b>	10	71.7 in 2013	10	62.98 in 1943	10	43.63 in 2023
	74.0 in 2019		71.7 in 1999	...			
			71.7 in 1940	<b>23</b>	<b>56.62 in 2024</b>		

Normal Temperature for the Year at WAUF1 = 72.4°  
 Normal Rainfall for the Year at WAUF1 = 52.00 inches

-----

**ARCHBOLD BIO STN** (Records began in January 1969):

Warmest Decembers		Coolest Decembers		Wettest Decembers		Driest Decembers	
1	73.4 in 2015	1	52.1 in 2010	1	7.60 in 1997	1	0.22 in 1981
2	70.5 in 2016	2	56.3 in 1989	2	6.22 in 2002	2	0.27 in 2005
3	69.1 in 1971	3	57.8 in 1969	3	4.90 in 1977	3	0.31 in 1970
4	69.0 in 2006	4	59.1 in 2003	4	4.16 in 1978	4	0.38 in 2000
5	68.4 in 2013	5	59.2 in 1980	5	3.91 in 2023	5	0.40 in 2021
6	67.3 in 2021	6	59.4 in 1993	6	3.83 in 1994	6	0.42 in 2013
7	67.2 in 1986	7	60.1 in 1985	7	3.75 in 2003	7	0.43 in 2011
8	67.0 in 2007	8	60.3 in 2020	8	3.35 in 1986	8	0.51 in 1982
9	66.7 in 1998	9	60.5 in 2005	9	3.10 in 2020	9	0.54 in 2016
10	66.3 in 1978		60.5 in 2002	10	3.04 in 2015	10	0.55 in 2001
...		...				<b>11</b>	<b>0.56 in 2024</b>
<b>30</b>	<b>63.5 in 2024</b>	<b>27</b>	<b>63.5 in 2024</b>				

Normal Temperature for December at ACHF1 = 64.4°  
 Normal Rainfall for December at ACHF1 = 2.03 inches

-----

Warmest Years		Coolest Years		Wettest Years		Driest Years	
1	75.4 in 2015	1	70.1 in 2010	1	72.61 in 2002	1	27.31 in 2000
2	74.4 in 2023	2	70.6 in 1981	2	66.06 in 2004	2	33.00 in 2007
3	74.3 in 2020	3	70.7 in 1983	3	64.09 in 1969	3	36.26 in 1980
	74.3 in 2017	4	71.0 in 1970	4	63.49 in 2013	4	37.46 in 2009
5	74.1 in 2019		71.0 in 1969	5	62.23 in 1992	5	41.45 in 1971
6	74.0 in 1990	6	71.1 in 2000	6	61.73 in 2015	6	43.02 in 1975
<b>7</b>	<b>73.9 in 2024</b>		71.1 in 1988	7	61.07 in 1982	7	43.84 in 1996
	73.9 in 2022		71.1 in 1984	8	60.94 in 2023	8	43.97 in 1985
	73.9 in 2016	9	71.2 in 1996	9	60.89 in 1979	9	45.03 in 1981
10	73.7 in 1991	10	71.3 in 1987	10	60.33 in 2001	10	45.06 in 1972
	73.7 in 1975		71.3 in 1977			11	45.69 in 1990
			71.3 in 1976			12	45.75 in 2019
						13	45.89 in 2011
						14	47.02 in 1976
						15	47.59 in 2006
							47.59 in 1988
						17	47.81 in 1989
						<b>18</b>	<b>48.41 in 2024</b>

Normal Temperature for the Year at ACHF1 = 72.9°  
 Normal Rainfall for the Year at ACHF1 = 54.23 inches

-----

**PUNTA GORDA AREA** (Records began in May 1914):

Warmest Decembers	Coollest Decembers	Wettest Decembers	Driest Decembers
1 72.8 in 2015	1 54.0 in 2010	1 6.88 in 2002	1 0.00 in 1933
2 72.5 in 1931	2 57.6 in 1935	2 6.50 in 1925	2 0.07 in 1938
3 71.4 in 1948	3 58.0 in 1963	3 6.47 in 1997	3 0.09 in 1926
4 70.4 in 2013	4 58.4 in 1917	4 5.42 in 1995	4 0.12 in 1932
70.4 in 1971	5 59.9 in 2003	5 4.95 in 1958	5 0.15 in 2014
70.4 in 1946	6 60.1 in 1989	6 4.92 in 1977	6 0.17 in 2011
7 70.0 in 2021	60.1 in 1969	7 4.63 in 2009	7 0.25 in 1981
70.0 in 2016	8 60.3 in 1968	8 4.49 in 1967	8 0.27 in 1928
70.0 in 1932	9 60.6 in 1975	9 4.44 in 2023	9 0.28 in 1991
10 69.7 in 1951	10 60.7 in 1930	10 4.31 in 1969	10 0.34 in 2000
	60.7 in 1915		0.34 in 1962
...	...		...
<b>36 67.0 in 2024</b>	<b>69 67.0 in 2024</b>		<b>24 0.55 in 2024</b>
67.0 in 2001	67.0 in 2001		
67.0 in 1964	67.0 in 1964		

Normal Temperature for December at PGD = 65.8°  
 Normal Rainfall for December at PGD = 1.99 inches

Warmest Years	Coollest Years	Wettest Years	Driest Years
<b>1 77.0 in 2024</b>	1 71.5 in 1968	1 88.10 in 1947	1 30.01 in 2007
2 76.8 in 1948	2 71.6 in 2010	2 87.09 in 1959	2 30.07 in 1927
3 76.7 in 2023	3 71.8 in 1969	3 81.06 in 1995	3 32.85 in 1990
4 76.4 in 1946	71.8 in 1915	4 65.33 in 1922	4 35.07 in 1955
5 75.9 in 2020	5 71.9 in 1976	5 64.87 in 2003	5 36.18 in 2000
6 75.8 in 1949	71.9 in 1970	6 64.43 in 1983	6 36.87 in 1976
7 75.6 in 2018	7 72.3 in 1940	7 63.97 in 1928	7 37.41 in 1923
75.6 in 1990	8 72.4 in 1977	8 63.30 in 2018	8 38.03 in 1920
75.6 in 1945	9 72.6 in 1942	9 62.41 in 2016	9 38.11 in 1971
10 75.5 in 2015	10 72.7 in 1930	10 62.02 in 1958	10 39.17 in 1956
		...	...
		<b>51 50.84 in 2024</b>	<b>45 50.84 in 2024</b>

Normal Temperature for the Year at PGD = 74.3°  
 Normal Rainfall for the Year at PGD = 52.97 inches

**FORT MYERS AREA** (Records began in January 1902):

Warmest Decembers	Coollest Decembers	Wettest Decembers	Driest Decembers
1 73.6 in 2015	1 56.7 in 2010	1 7.04 in 1925	1 Trace in 1956
2 73.3 in 2016	2 58.4 in 1935	2 6.21 in 1905	2 0.01 in 1924
3 72.8 in 1931	3 58.5 in 1903	3 5.71 in 2019	3 0.02 in 1984
4 72.6 in 2021	4 58.8 in 1910	4 5.46 in 1997	0.02 in 1906
5 72.3 in 1971	5 59.3 in 1963	5 5.42 in 1940	5 0.05 in 2014
6 71.5 in 2013	6 60.3 in 1950	6 5.26 in 1986	6 0.09 in 2005
7 71.2 in 2007	7 60.5 in 1954	7 5.16 in 1979	7 0.13 in 1933
8 70.9 in 2006	8 60.8 in 1989	8 4.68 in 2003	8 0.14 in 1951
9 70.7 in 2019	9 61.0 in 1969	9 4.35 in 1978	9 0.15 in 1926
10 70.5 in 1948	61.0 in 1930	10 4.18 in 2023	10 0.16 in 1968
...	...	...	...
<b>48 67.5 in 2024</b>	<b>76 67.5 in 2024</b>	<b>53 1.41 in 2024</b>	<b>71 1.41 in 2024</b>

Normal Temperature for December at FMY = 67.3°  
 Normal Rainfall for December at FMY = 1.90 inches

-----

Warmest Years	Coollest Years	Wettest Years	Driest Years
1 78.0 in 2023	1 71.2 in 1910	<b>*1 80.45 in 2024</b>	1 32.83 in 1964
2 77.6 in 2022	2 71.8 in 1903	2 80.17 in 1947	2 32.85 in 1927
3 77.1 in 2020	3 72.1 in 1904	3 77.35 in 1922	3 33.93 in 1944
4 77.0 in 2015	4 72.3 in 1958	4 74.85 in 1983	4 35.00 in 1988
77.0 in 1990	72.3 in 1902	5 74.75 in 1912	5 36.19 in 1950
6 76.9 in 2021	6 72.4 in 1977	6 74.46 in 2005	6 38.50 in 1907
7 76.8 in 2019	72.4 in 1917	7 73.14 in 1995	7 39.88 in 2009
<b>8 76.7 in 2024</b>	8 72.5 in 1976	8 72.70 in 2022	8 41.68 in 1918
9 76.6 in 1994	72.5 in 1906	9 71.94 in 1969	9 41.72 in 1938
10 76.4 in 1991	10 72.8 in 1983	10 70.64 in 2003	10 42.32 in 2014
	72.8 in 1969		
	72.8 in 1940		
	72.8 in 1909		

Normal Temperature for the Year at FMY = 75.4°  
 Normal Rainfall for the Year at FMY = 57.41 inches

*\* Rainfall was missing on October 10, 2024, but radar and surrounding observations only indicate that 0.05 inch or less fell on this day.*

-----

For more Climate information visit our web site at the following link:  
<https://www.weather.gov/tampabay> and then go to the Climate and Past  
 Weather drop down menu above the graphical forecast images.