



NOAA - National Weather Service

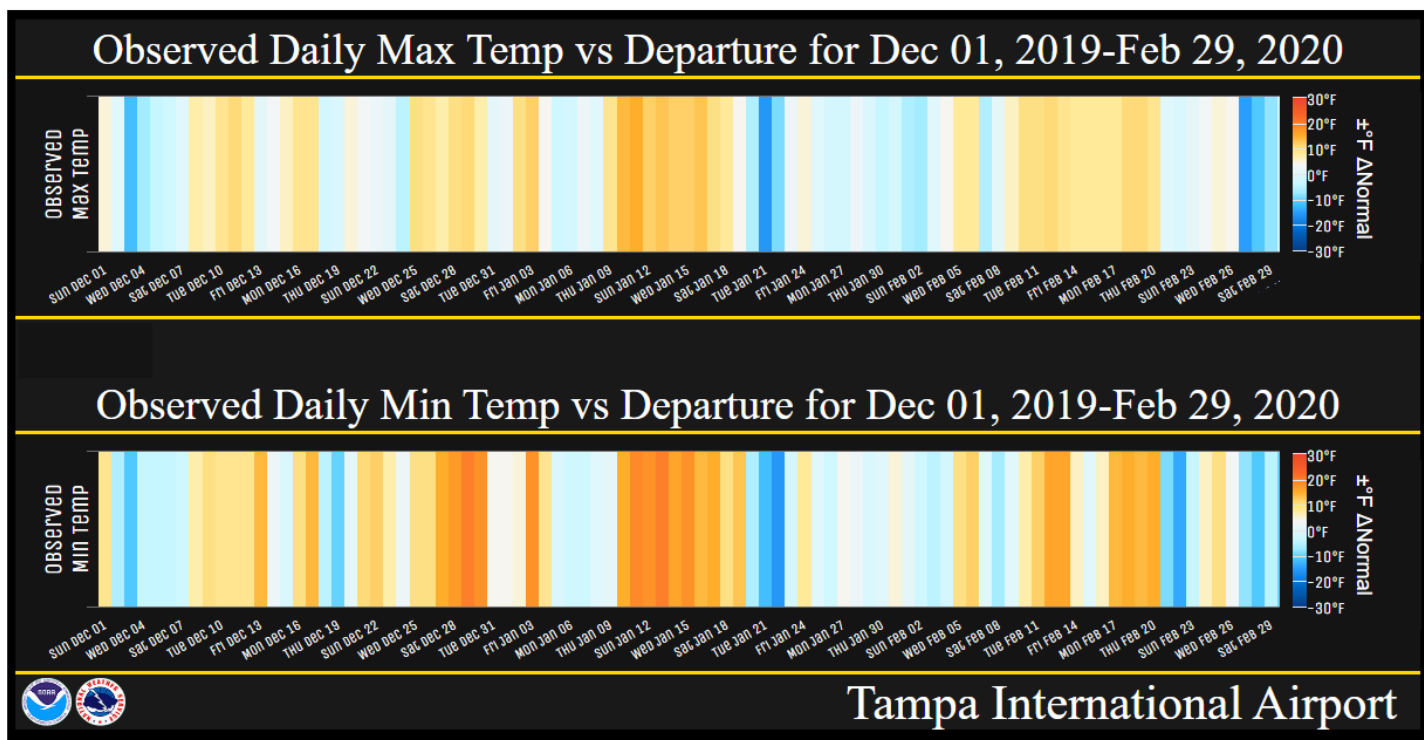
Tampa Bay Area

2525 14th Avenue SE, Ruskin, Florida 33570

813-645-2323 <https://weather.gov/tampabay>

February 2020 and Winter 2019-20 Climate Summary

This winter the El Niño Southern Oscillation (ENSO) was neutral thus having little effect on the temperatures and rainfall. In the absence of El Niño or La Niña, long-term trends become a key predictor for the winter months, while other climate patterns, such as the [Madden-Julian Oscillation](#) and [Arctic Oscillation \(AO\)](#), play a larger role in determining winter weather. We did have some decent cool downs (blue shaded bars in graphic below) during this past Winter (December 1, 2019 - February 29, 2020), but many days were above normal as seen by all the orange shading in the graphic below.

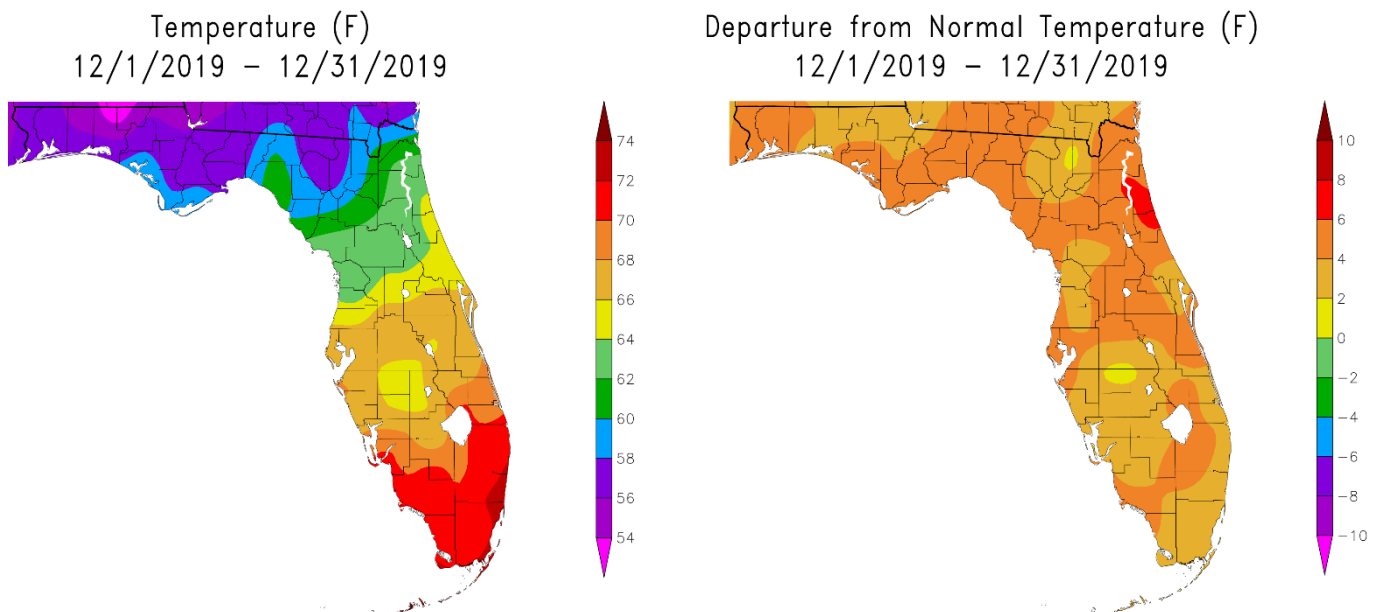


For February 2020 and the Winter 2019-2020 (Dec/Jan/Feb) temperatures ended up about 2 to 5 degrees above normal across the region placing some locations in the Top Ten Warmest for Winter as seen in the table below:

WINTER (DEC/JAN/FEB) TEMPERATURE (°F) :

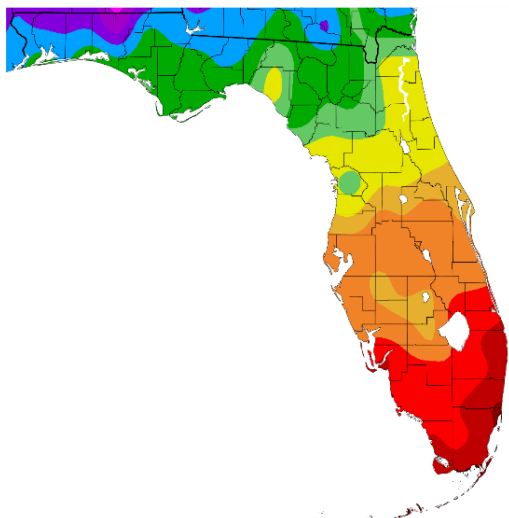
Location	Winter 2019-20 Rank	Winter 2019-20 Avg Temp	Normal Temp	Dep fm Normal	Warmest Winter	Records Began
Plant City	2nd	67.3	62.1	+5.2	68.7/1948-49	Sep 1892
Archbold Bio Stn	3rd	65.9	61.7	+4.2	67.4/2016-17	Jan 1969
Sarasota-Bradenton Area	4th	67.3	62.7	+4.6	69.1/1931-32	Jan 1911
Fort Myers - Page Field	5th	69.6	65.7	+3.9	70.9/2016-17	Jan 1902
Chiefland 5 ESE	5th	60.9	56.0	+4.9	62.0/1956-57	Jul 1956
Winter Haven Area	7th	66.7	62.4	+4.3	69.4/1948-49	Mar 1941
Lakeland Area	7th	66.6	62.3	+4.3	70.9/1931-32	Feb 1915
Venice	7th	66.6	63.0	+3.6	68.3/1988-89	May 1955
Tampa Area	7th	66.5	62.4	+4.1	70.3/1931-32	Apr 1890
Tarpon Springs	7th(tie)	65.3	61.3	+4.0	70.5/1931-32	Jan 1892
St Petersburg Area	11th(tie)	66.9	63.3	+3.6	72.1/1931-31	Aug 1914
Bartow	12th	65.3	63.3	+2.0	68.9/1948-49	Jun 1892
Arcadia	13th	65.4	61.7	+3.7	69.5/1931-32	Nov 1899
St. Leo	14th(tie)	64.5	62.4	+2.1	68.7/1932-33	Apr 1895
Inverness 3 SE	14th	61.2	58.0	+3.2	67.0/1948-49	Jul 1948
Punta Gorda Area	16th(tie)	66.8	63.9	+2.9	72.0/1948-49	Jul 1914
Myakka River State Park	16th	65.2	63.2	+2.0	68.4/2016-17	Mar 1956
Wauchula 2 N	17th(tie)	64.5	63.0	+1.5	68.8/1948-49	Jan 1933
Brooksville Area	19th(tie)	63.4	58.5	+4.9	68.2/1931-32	Jan 1892

On the following pages are graphics that depict the monthly/season average and departure from normal (average) temperature (based on the 1981-2010 Normals) across the area.

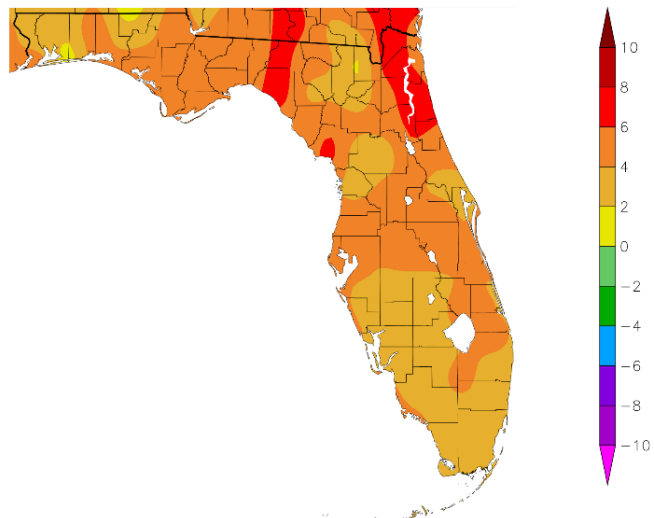


December 2019

Temperature (F)
1/1/2020 - 1/31/2020

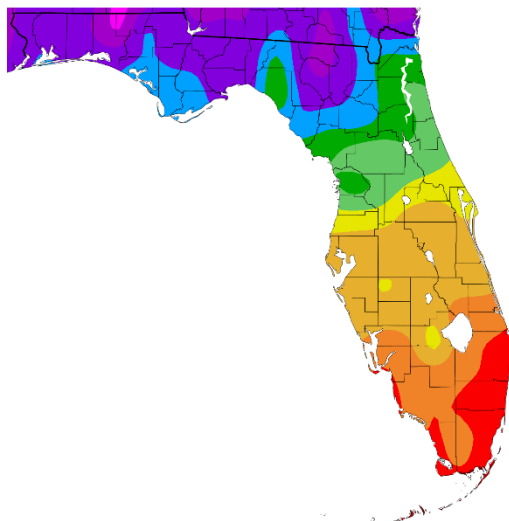


Departure from Normal Temperature (F)
1/1/2020 - 1/31/2020

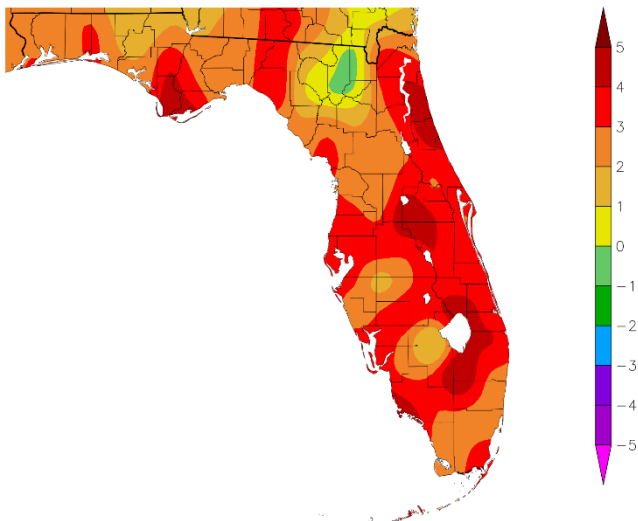


January 2020

Temperature (F)
2/1/2020 - 2/29/2020

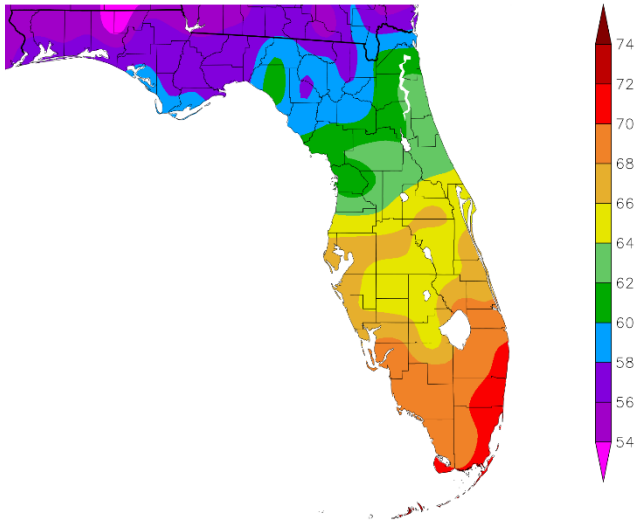


Departure from Normal Temperature (F)
2/1/2020 - 2/29/2020

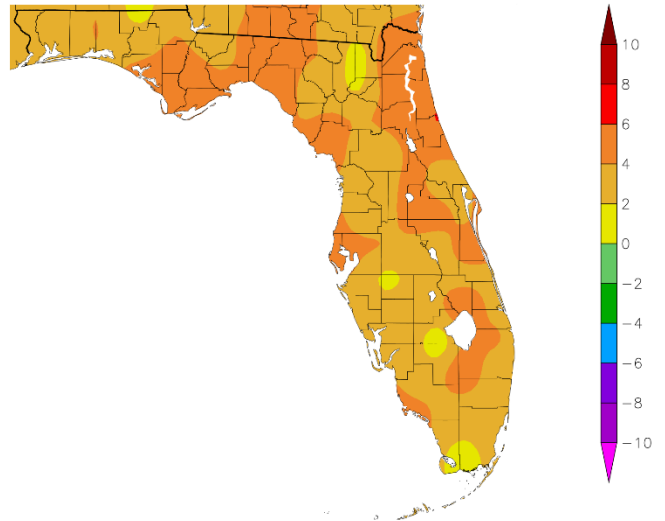


February 2020

Temperature (F)
12/1/2019 – 2/29/2020



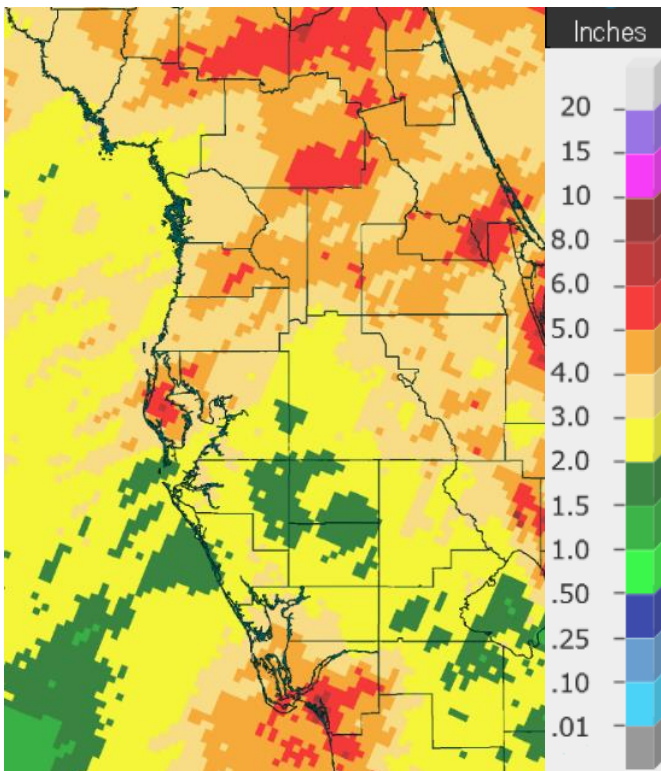
Departure from Normal Temperature (F)
12/1/2019 – 2/29/2020



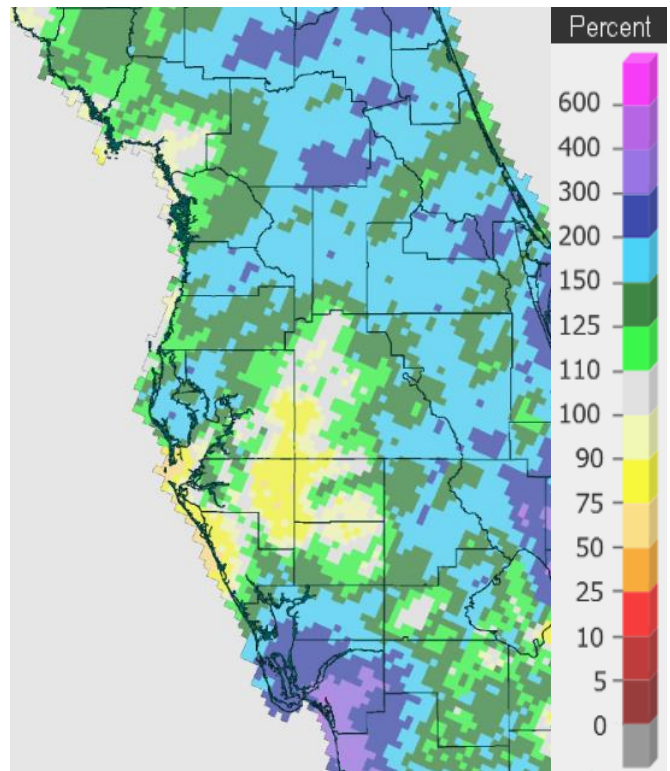
Winter 2019-2020 (Dec/Jan/Feb)

Graphics Source: NOAA Regional Climate Centers

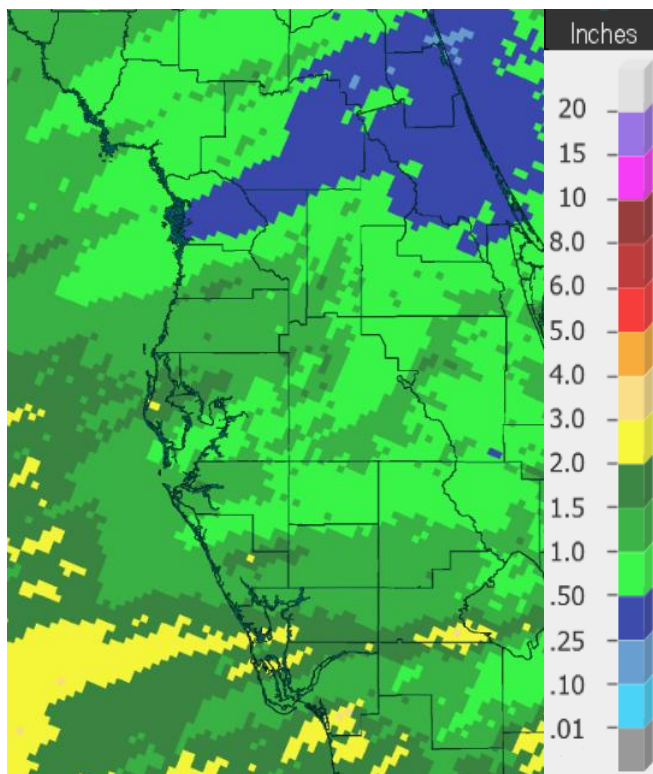
As for rainfall we started out wet across much of the area in December, then January and February turned rather dry. For the Winter much of the region ended up below normal, except for southwest Florida.



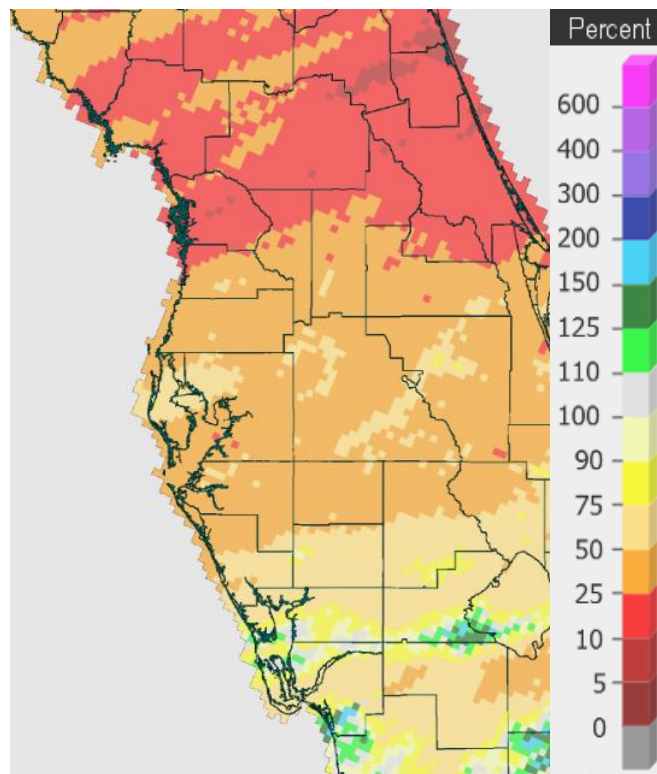
Rainfall December 2019



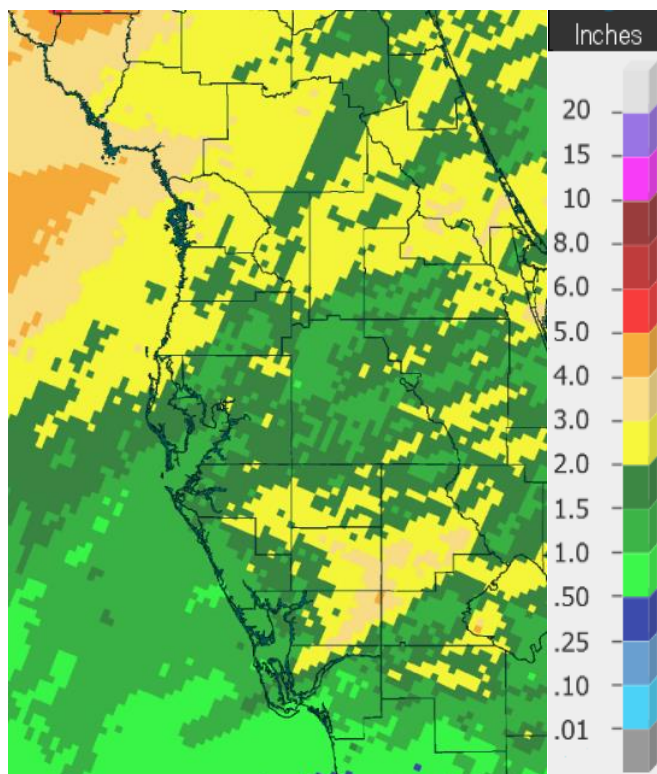
Percent of Normal



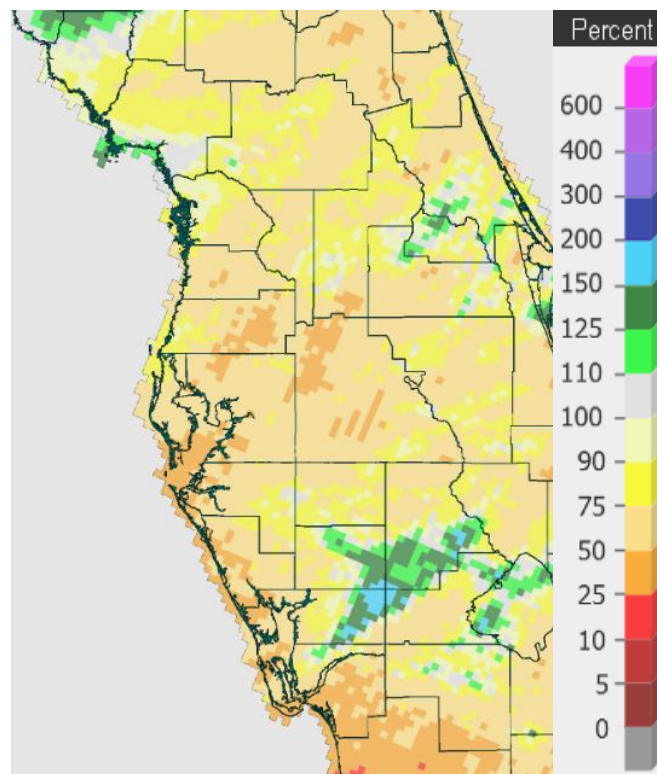
Rainfall January 2020



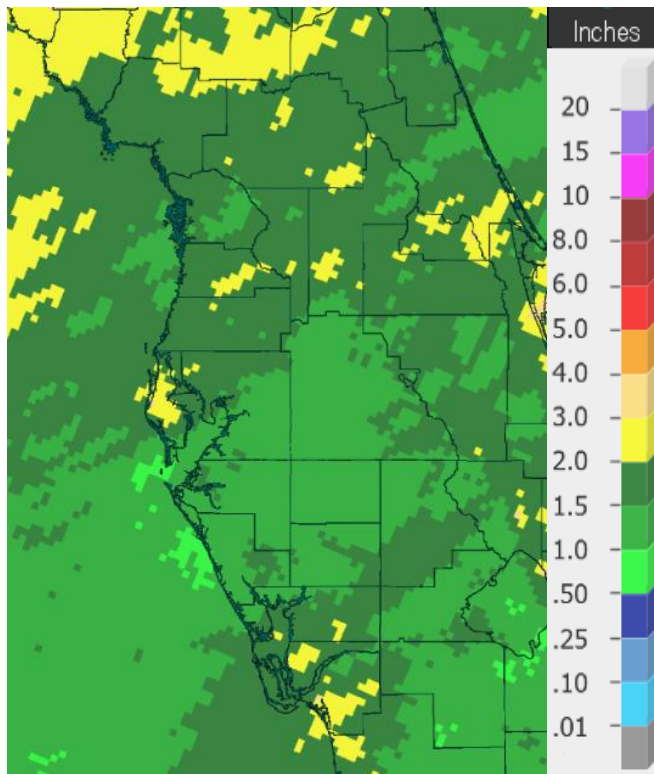
Percent of Normal



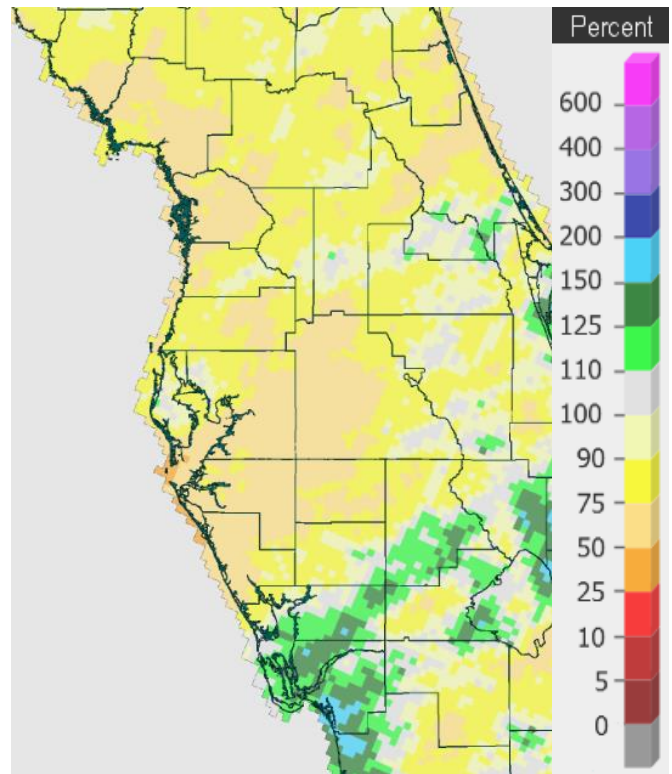
Rainfall February 2020



Percent of Normal



Rainfall Dec 1 2019-Feb 29 2020



Percent of Normal

On the following pages are tables of the Top Ten Warmest, Coolest, Wettest, and Driest Februarys and Winters (December/January/February) at some official NWS locations, which include the average/total for this month/season, and the 1981-2010 Normal (average) temperature and rainfall.

CHIEFLAND 5 ESE (records began in July 1956):

Warmest Februarys	Coolest Februarys	Wettest Februarys	Driest Februarys
1 68.8 in 2018	1 48.4 in 1958	1 15.20 in 1998	1 0.12 in 1962
2 65.3 in 2019	2 49.3 in 2010	2 9.06 in 2004	2 0.72 in 1994
3 64.2 in 1990	49.3 in 1968	3 8.73 in 1970	3 0.77 in 1980
4 64.1 in 1959	4 50.0 in 1978	4 7.75 in 1964	4 0.78 in 1989
5 64.0 in 2017	5 52.3 in 1963	5 7.42 in 1966	5 0.82 in 1997
64.0 in 1982	6 52.4 in 1964	6 7.05 in 1965	6 0.98 in 1996
7 63.3 in 1975	7 53.0 in 1969	7 6.55 in 1993	7 1.01 in 1991
63.3 in 1957	8 53.1 in 1980	8 6.26 in 1967	8 1.06 in 2000
9 63.1 in 2001	9 53.3 in 1977	9 6.10 in 1963	9 1.21 in 2017
10 62.6 in 1997	10 53.5 in 2009	10 6.01 in 1978	10 1.37 in 2019
...	
19 60.6 in 2020		34 2.73 in 2020	29 2.73 in 2020

Normal Temperature for February at CHIF1 = 57.4°

Normal Rainfall for February at CHIF1 = 3.83 in.

Warmest Winters	Coolest Winters	Wettest Winters	Driest Winters
1 62.0 in 1956-57	1 50.8 in 1957-58	1 30.55 in 1997-98	1 2.18 in 1956-57
2 61.7 in 1971-72	2 51.7 in 1977-78	2 26.40 in 1963-64	2 3.86 in 2000-01
3 61.5 in 1998-99	51.7 in 1963-64	3 20.46 in 1969-70	3 4.21 in 1961-62
4 61.1 in 1990-91	4 52.0 in 1976-77	4 19.65 in 1964-65	4 5.19 in 2016-17
5 60.9 in 2019-20	5 52.1 in 2009-10	5 17.59 in 1977-78	5.19 in 1980-81
6 60.8 in 1973-74	6 52.7 in 2010-11	6 17.58 in 1978-79	6 5.26 in 2011-12
7 60.2 in 2017-18	52.7 in 1980-81	7 16.42 in 1965-66	7 5.42 in 2004-05
60.2 in 1974-75	8 52.9 in 1969-70	8 16.37 in 2018-19	8 5.49 in 1984-85
9 59.6 in 1988-89	9 53.2 in 1968-69	9 16.27 in 2005-06	9 6.00 in 1994-95
59.6 in 1964-65	10 53.7 in 2002-03	10 15.89 in 2013-14	10 6.17 in 1999-00
	53.7 in 1962-63
		27 10.90 in 2019-20	34 10.90 in 2019-20

Normal Temperature for Winter (Dec/Jan/Feb) at CHIF1 = 56.0°

Normal Rainfall for Winter (Dec/Jan/Feb) at CHIF1 = 10.44 in.

INVERNESS 3 SE (records began in July 1948):

Warmest Februarys	Coolest Februarys	Wettest Februarys	Driest Februarys
1 69.4 in 1949	1 49.7 in 2010	1 10.21 in 1952	1 0.46 in 1999
2 68.9 in 2018	2 50.6 in 1978	2 6.62 in 1998	2 0.52 in 1985
3 68.1 in 1959	3 51.1 in 1958	3 6.45 in 1960	3 0.58 in 1976
4 66.9 in 1957	4 54.0 in 1977	4 6.25 in 1983	4 0.73 in 1950
5 66.1 in 2019	5 54.3 in 1980	5 6.16 in 1978	5 0.75 in 1989
6 65.9 in 1956	6 54.7 in 1968	6 5.64 in 2006	6 0.82 in 2009
7 65.8 in 1982	7 54.8 in 1988	7 5.56 in 1971	7 0.95 in 1949
8 65.7 in 1975	8 54.9 in 2015	8 5.43 in 1964	8 0.99 in 2005
9 64.9 in 1990	9 55.1 in 2009	9 5.35 in 2003	0.99 in 1995
10 64.2 in 2017	10 55.3 in 2006	10 5.34 in 1970	0.99 in 1956
64.2 in 2012	55.3 in 1979
64.2 in 2001	55.3 in 1973	36 2.79 in 2020	36 2.79 in 2020
64.2 in 1950			
...			
23 61.8 in 2020	42 61.8 in 2020		

Normal Temperature for February at INVFl = 59.1°

Normal Rainfall for February at INVFl = 2.86 in.

Warmest Winters	Coolest Winters	Wettest Winters	Driest Winters
1 67.0 in 1948-49	1 52.5 in 2002-03	1 22.52 in 1997-98	1 1.98 in 1949-50
2 66.0 in 1949-50	2 53.1 in 1977-78	2 17.06 in 1977-78	2 2.49 in 2004-05
3 65.3 in 1956-57	53.1 in 1976-77	3 16.66 in 2018-19	3 2.59 in 1984-85
4 64.1 in 2016-17	4 53.2 in 2009-10	4 14.69 in 1969-70	4 2.98 in 2012-13
5 63.0 in 1971-72	5 53.5 in 1957-58	5 14.46 in 1963-64	5 3.20 in 1956-57
6 62.5 in 1951-52	6 54.1 in 2010-11	6 14.06 in 2002-03	6 3.52 in 1948-49
7 62.3 in 1974-75	7 55.6 in 1987-88	7 13.93 in 1951-52	7 3.81 in 1975-76
62.3 in 1964-65	8 55.9 in 1995-96	8 12.79 in 1978-79	8 3.90 in 2011-12
9 62.2 in 1973-74	9 56.1 in 1963-64	9 12.70 in 1993-94	9 4.02 in 1955-56
62.2 in 1953-54	10 56.3 in 2005-06	10 12.25 in 1983-84	10 4.26 in 1998-99
11 61.5 in 2007-08			...
61.5 in 1970-71			17 6.43 in 2019-20
61.5 in 1966-67			
14 61.2 in 2019-20			

Normal Temperature for Winter (Dec/Jan/Feb) at INVFl = 58.0°

Normal Rainfall for Winter (Dec/Jan/Feb) at INVFl = 8.31 in.

BROOKSVILLE AREA (records began in January 1892):

Warmest Februarys	Coolest Februarys	Wettest Februarys	Driest Februarys
1 70.6 in 2018	1 50.4 in 2010	1 10.15 in 1998	1 0.10 in 1911
2 69.9 in 1927	2 52.1 in 1895	2 9.59 in 1952	2 0.11 in 2017
3 69.1 in 1932	3 52.8 in 1902	3 8.84 in 1899	3 0.14 in 2000
4 69.0 in 1949	4 52.9 in 1978	4 8.72 in 2004	4 0.50 in 1945
5 68.8 in 1944	5 54.8 in 1947	5 7.37 in 1936	5 0.54 in 1938
6 68.6 in 2019	54.8 in 1920	6 7.19 in 1983	6 0.53 in 2009
68.6 in 1939	7 55.2 in 1901	7 7.04 in 1903	0.53 in 1939
8 68.4 in 1918	8 55.9 in 2009	8 6.83 in 1971	8 0.54 in 1999
9 68.1 in 1959	9 56.0 in 1963	9 6.78 in 1981	9 0.57 in 2001
10 66.9 in 1975	56.0 in 1942	10 6.52 in 1946	0.57 in 1943
66.9 in 1945			
...
29 64.3 in 2020	85 64.3 in 2020	71 2.43 in 2020	57 2.43 in 2020
64.3 in 1897	64.3 in 1897		

Normal Temperature for February at BKV = 59.5°

Normal Rainfall for February at BKV = 3.37 in.

Warmest Winters	Coolest Winters	Wettest Winters	Driest Winters
1 68.2 in 1931-32	1 53.8 in 1901-02	1 22.83 in 1997-98	1 1.09 in 1910-11
2 67.5 in 1948-49	2 54.0 in 2009-10	2 17.83 in 1898-99	2 1.57 in 1906-07
3 66.9 in 1949-50	3 54.5 in 2010-11	3 17.22 in 1935-36	3 1.89 in 2011-12
4 66.1 in 1926-27	4 55.0 in 2002-03	4 16.98 in 1911-12	4 2.44 in 1949-50
5 65.8 in 1912-13	5 55.7 in 1976-77	5 16.44 in 1969-70	5 2.63 in 1938-39
6 65.4 in 1936-37	6 56.2 in 1969-70	6 16.21 in 1902-03	6 2.81 in 1999-00
65.4 in 1932-33	7 56.4 in 2003-04	7 15.51 in 1963-64	7 2.87 in 2008-09
8 65.2 in 1971-72	8 56.7 in 1963-64	8 14.93 in 1913-14	8 3.02 in 1908-09
9 64.3 in 1973-74	9 56.8 in 1939-40	9 14.80 in 2003-04	9 3.26 in 1942-43
10 64.1 in 1974-75	56.8 in 1894-95	10 14.79 in 1977-78	10 3.43 in 1984-85
...	
19 63.4 in 2019-20		60 8.04 in 2019-20	66 8.04 in 2019-20
63.4 in 1961-62			
63.4 in 1951-52			

Normal Temperature for Winter (Dec/Jan/Feb) at BKV = 58.5°

Normal Rainfall for Winter (Dec/Jan/Feb) at BKV = 8.98 in.

ST LEO (records began in April 1895):

Warmest Februarys		Coolest Februarys		Wettest Februarys		Driest Februarys	
1	71.2 in 2018	1	52.7 in 1958	1	11.04 in 1998	1	0.01 in 1911
2	70.2 in 1932	2	53.3 in 2010	2	9.71 in 1899	2	0.14 in 1999
3	69.5 in 1949	3	53.9 in 1978	3	9.48 in 1983	3	0.25 in 1950
4	69.4 in 2019	4	54.4 in 1947	4	8.69 in 1937	4	0.32 in 1945
5	69.1 in 1982	5	54.9 in 1968	5	8.09 in 1936	5	0.40 in 1989
6	69.0 in 1990	6	55.9 in 1912	6	7.22 in 1915	6	0.42 in 1948
7	68.9 in 1959	7	56.0 in 1942	7	6.92 in 1897	7	0.44 in 1916
8	68.7 in 1939	8	56.5 in 1902	8	6.35 in 1971	8	0.48 in 1938
9	68.2 in 1944	9	56.7 in 1964		6.35 in 1952	9	0.51 in 1922
10	68.1 in 1962	10	57.1 in 1970	10	6.31 in 1963	10	0.54 in 2000
			57.1 in 1941	
			57.1 in 1920	70	2.26 in 2020	56	2.26 in 2020
...		...					
29	65.3 in 2020	93	65.3 in 2020				
	65.3 in 1950		65.3 in 1950				

Normal Temperature for February at STLf1 = 63.6°

Normal Rainfall for February at STLf1 = 3.04 in.

Warmest Winters		Coolest Winters		Wettest Winters		Driest Winters	
1	68.7 in 1931-32	1	54.7 in 1930-31	1	28.97 in 1997-98	1	1.56 in 1906-07
2	68.0 in 1948-49	2	55.5 in 1957-58	2	23.03 in 1898-99	2	1.72 in 1910-11
3	66.6 in 1949-50	3	56.3 in 1977-78	3	18.02 in 1981-82	3	2.07 in 1949-50
4	66.4 in 1936-37	4	56.4 in 1939-40	4	17.89 in 2002-03	4	2.23 in 1938-39
5	66.1 in 1956-57	5	56.5 in 2009-10	5	16.87 in 1969-70	5	2.62 in 2011-12
6	65.8 in 1971-72		56.5 in 1976-77	6	16.34 in 1935-36	6	2.71 in 1975-76
7	65.7 in 1912-13	7	56.9 in 1969-70	7	15.61 in 1913-14	7	2.81 in 1937-38
8	65.5 in 1998-99	8	57.1 in 2010-11	8	14.90 in 1940-41	8	3.48 in 1915-16
9	65.2 in 2007-08	9	57.3 in 1927-28	9	14.55 in 1902-03	9	3.54 in 2016-17
10	65.1 in 2016-17	10	57.5 in 1935-36	10	14.40 in 1977-78	10	3.65 in 1931-32
	65.1 in 1990-91			
12	65.0 in 1924-25			63	7.43 in 2019-20	60	7.43 in 2019-20
13	64.9 in 1932-33						
14	64.5 in 2019-20						
	64.5 in 1974-75						

Normal Temperature for Winter (Dec/Jan/Feb) at STLf1 = 62.4°

Normal Rainfall for Winter (Dec/Jan/Feb) at STLf1 = 9.08 in.

TARPON SPRINGS (records began in January 1892):

Warmest Februarys	Coolest Februarys	Wettest Februarys	Driest Februarys
1 71.2 in 2018	1 51.8 in 1958	1 10.91 in 1998	1 0.06 in 1911
2 70.7 in 1932	2 52.0 in 1895	2 9.79 in 1899	2 0.17 in 2009
3 69.6 in 2019	3 53.0 in 1978	3 8.90 in 1936	3 0.26 in 1918
69.6 in 1949	4 54.6 in 2010	4 8.56 in 1937	4 0.32 in 1999
5 69.3 in 1990	5 55.0 in 1968	5 8.45 in 1983	5 0.38 in 1997
6 68.9 in 1944	6 55.2 in 1902	6 7.36 in 1971	6 0.40 in 1950
68.9 in 1939	7 55.4 in 1964	7 6.52 in 1903	7 0.41 in 1989
8 68.7 in 1927	55.4 in 1947	8 6.49 in 1963	8 0.44 in 1945
9 68.6 in 1997	9 55.5 in 1980	9 6.31 in 2004	9 0.52 in 1938
10 68.1 in 1982	10 55.7 in 1963	10 6.24 in 1970	10 0.59 in 1944
...
24 65.9 in 2020	100 65.9 in 2020	42 3.10 in 2020	87 3.10 in 2020
65.9 in 2017	65.9 in 2017		

Normal Temperature for February at TRPF1 = 62.3°

Normal Rainfall for February at TRPF1 = 2.93 in.

Warmest Winters	Coolest Winters	Wettest Winters	Driest Winters
1 70.5 in 1931-32	1 54.2 in 1957-58	1 29.65 in 1997-98	1 0.97 in 1949-50
2 67.3 in 1949-50	2 55.1 in 1963-64	2 20.41 in 1935-36	2 2.06 in 1910-11
3 66.0 in 1932-33	3 55.8 in 1977-78	3 19.40 in 1898-99	3 2.08 in 1938-39
4 65.9 in 2016-17	4 56.3 in 1980-81	4 18.08 in 1969-70	4 2.14 in 1906-07
5 65.6 in 1990-91	5 56.5 in 1962-63	5 17.47 in 1983-84	5 2.37 in 2000-01
6 65.5 in 1936-37	56.5 in 1939-40	6 17.41 in 2002-03	6 2.67 in 2008-09
7 65.3 in 2019-20	7 56.6 in 2010-11	7 16.44 in 2018-19	7 3.02 in 1975-76
65.3 in 1996-97	56.6 in 1901-02	8 15.17 in 1902-03	8 3.11 in 1934-35
65.3 in 1926-27	9 56.8 in 2009-10	9 14.89 in 1963-64	9 3.54 in 1968-69
65.3 in 1912-13	56.8 in 1976-77	10 14.33 in 1985-86	10 3.56 in 1999-00
	56.8 in 1969-70
		60 8.10 in 2019-20	64 8.10 in 2019-20

Normal Temperature for Winter (Dec/Jan/Feb) at TRPF1 = 61.3°

Normal Rainfall for Winter (Dec/Jan/Feb) at TRPF1 = 8.87 in.

TAMPA AREA (records began in April 1890):

Warmest Februarys		Coolest Februarys		Wettest Februarys		Driest Februarys	
1	74.2 in 2018	1	52.9 in 1958	1	10.92 in 1937	1	0.05 in 1911
2	70.9 in 2019	2	53.2 in 1978	2	10.82 in 1998	2	0.08 in 1918
3	70.8 in 1932	3	54.3 in 1968	3	9.09 in 2006	3	0.21 in 1950
4	70.1 in 1949	4	54.8 in 1947	4	7.95 in 1963	4	0.25 in 1932
5	69.1 in 1990		54.8 in 1895	5	7.43 in 1936	5	0.29 in 1999
	69.1 in 1891	6	55.0 in 2010	6	7.35 in 1983	6	0.30 in 2000
7	68.9 in 1959	7	55.8 in 1969	7	6.55 in 2015	7	0.34 in 1949
	68.9 in 1927	8	56.2 in 1912	8	6.27 in 1899	8	0.41 in 1991
9	68.8 in 2017		56.2 in 1902	9	6.06 in 1903		0.41 in 1989
10	68.6 in 1997	10	56.6 in 1980	10	5.98 in 1919	10	0.43 in 1994
...		
22	66.7 in 2020	109	66.7 in 2020	74	1.83 in 2020	57	1.83 in 2020

Normal Temperature for February at TPA = 63.4°

Normal Rainfall for February at TPA = 2.81 in.

Warmest Winters		Coolest Winters		Wettest Winters		Driest Winters	
1	70.3 in 1931-32	1	55.2 in 1957-58	1	31.03 in 1997-98	1	0.51 in 1949-50
2	68.4 in 2016-17	2	55.7 in 1977-78	2	17.11 in 2002-03	2	1.41 in 1906-07
	68.4 in 1948-49	3	56.0 in 1976-77	3	15.81 in 2018-19	3	1.71 in 1931-32
4	67.0 in 1949-50	4	56.2 in 1980-81	4	15.59 in 1898-99	4	1.76 in 1975-76
5	66.8 in 2017-18	5	56.5 in 1969-70	5	14.86 in 1936-37	5	1.86 in 1910-11
6	66.7 in 1936-37	6	56.8 in 1963-64	6	14.53 in 1914-15	6	2.15 in 1948-49
7	66.5 in 2019-20	7	57.2 in 1939-40	7	13.78 in 1902-03	7	2.54 in 1938-39
8	66.1 in 2011-12	8	57.3 in 1968-69	8	13.77 in 1941-42	8	2.76 in 1943-44
	66.1 in 1912-13	9	57.4 in 1901-02	9	13.74 in 1935-36	9	2.85 in 1934-35
10	66.0 in 1990-91	10	57.7 in 2009-10	10	12.76 in 1963-64	10	2.87 in 1904-05
				
				51	7.40 in 2019-20	80	7.40 in 2019-20

Normal Temperature for Winter (Dec/Jan/Feb) at TPA = 62.4°

Normal Rainfall for Winter (Dec/Jan/Feb) at TPA = 7.51 in.

ST PETERSBURG – ALBERT WHITTED (records began in August 1914):

Warmest Februarys	Coolest Februarys	Wettest Februarys	Driest Februarys
1 72.6 in 2018	1 55.7 in 1978	1 12.71 in 1998	1 0.12 in 1918
2 72.3 in 1932	2 55.9 in 2010	2 10.93 in 1937	2 0.18 in 2001
3 71.1 in 1949	3 57.3 in 1964	3 9.06 in 1983	3 0.24 in 1976
4 70.1 in 2019	57.3 in 1947	4 8.26 in 1963	4 0.25 in 1999
5 70.0 in 1959	5 58.3 in 1940	5 7.96 in 1936	5 0.29 in 2012
6 69.9 in 1927	6 58.8 in 1963	6 6.69 in 1946	6 0.34 in 1949
7 69.6 in 1957	7 58.9 in 1980	7 6.37 in 1972	7 0.43 in 1989
8 69.4 in 1944	8 59.0 in 1968	8 5.97 in 1964	8 0.44 in 1944
9 69.3 in 1982	9 59.3 in 1941	9 5.67 in 1958	9 0.45 in 1950
69.3 in 1939	10 59.5 in 1977	10 5.57 in 1919	10 0.49 in 1922
...	59.5 in 1942
22 67.5 in 2020	81 67.5 in 2020	68 1.48 in 2020	38 1.48 in 2020
67.5 in 2012	67.5 in 2012		

Normal Temperature for February at SPG = 64.1°

Normal Rainfall for February at SPG = 2.72 in.

Warmest Winters	Coolest Winters	Wettest Winters	Driest Winters
1 72.1 in 1931-32	1 58.1 in 1939-40	1 32.36 in 1997-98	1 0.59 in 1949-50
2 69.4 in 1948-49	2 58.2 in 1963-64	2 20.23 in 2002-03	2 1.49 in 2016-17
3 68.3 in 1971-72	3 58.5 in 2009-10	3 17.14 in 1963-64	3 1.51 in 2000-01
4 68.1 in 1936-37	58.5 in 1976-77	4 16.95 in 1914-15	4 1.54 in 1975-76
5 67.8 in 1949-50	5 58.7 in 1977-78	5 15.15 in 1935-36	5 1.92 in 2011-12
6 67.7 in 2016-17	6 59.2 in 1980-81	6 13.63 in 1947-48	6 2.06 in 1938-39
67.7 in 2012-13	7 59.3 in 1962-63	7 13.50 in 1969-70	7 2.11 in 1955-56
8 67.6 in 1956-57	8 59.8 in 1969-70	8 13.37 in 1936-37	8 2.21 in 1934-35
9 67.5 in 1932-33	9 60.1 in 1930-31	9 13.14 in 1957-58	9 2.35 in 1948-49
10 67.1 in 1926-27	10 60.5 in 2002-03	10 12.64 in 1945-46	10 2.43 in 1943-44
11 66.9 in 2019-20	
66.9 in 1998-99		55 6.75 in 2019-20	51 6.75 in 2019-20

Normal Temperature for Winter (Dec/Jan/Feb) at SPG = 63.3°

Normal Rainfall for Winter (Dec/Jan/Feb) at SPG = 8.04 in.

PLANT CITY (records began in September 1892):

Warmest Februarys	Coolest Februarys	Wettest Februarys	Driest Februarys
1 73.2 in 2018	1 54.6 in 1958	1 9.04 in 1936	1 0.00 in 1911
2 71.9 in 2019	2 54.9 in 2010	2 8.87 in 1899	2 Trace in 1918
3 70.6 in 1949	3 55.9 in 1978	3 8.57 in 1983	3 0.05 in 1989
4 70.1 in 1959	4 56.0 in 1902	4 8.49 in 1998	4 0.09 in 1976
5 69.6 in 1918	5 56.2 in 1947	5 7.97 in 1937	5 0.25 in 1950
6 69.0 in 2017	6 56.7 in 1968	6 7.56 in 1963	6 0.28 in 1932
7 68.9 in 1982	56.7 in 1942	7 6.77 in 1919	7 0.31 in 2000
8 68.8 in 1939	56.7 in 1941	8 6.13 in 1972	8 0.36 in 1945
9 68.6 in 1990	9 56.9 in 1931	9 5.98 in 2015	9 0.37 in 1949
10 68.2 in 2001	10 57.1 in 1912	10 5.73 in 1992	0.37 in 1944
11 68.1 in 2020	
		80 1.82 in 2020	43 1.82 in 2020
		1.82 in 2008	1.82 in 2008

Normal Temperature for February at PLCF1 = 63.2°

Normal Rainfall for February at PLCF1 = 2.72 in.

Warmest Winters	Coolest Winters	Wettest Winters	Driest Winters
1 68.7 in 1948-49	1 55.2 in 1930-31	1 26.68 in 1997-98	1 1.03 in 1906-07
2 67.3 in 2019-20	2 56.5 in 1935-36	2 17.28 in 1898-99	2 1.06 in 1975-76
3 67.2 in 1971-72	3 56.6 in 1939-40	3 17.16 in 1935-36	3 2.04 in 1910-11
4 66.8 in 1956-57	56.6 in 1901-02	4 16.72 in 2002-03	4 2.15 in 1938-39
5 66.2 in 1949-50	5 56.7 in 1957-58	5 14.99 in 2018-19	5 2.19 in 1908-09
6 66.1 in 2012-13	6 57.2 in 1980-81	6 14.70 in 1914-15	6 2.39 in 2011-12
7 66.0 in 2018-19	7 57.5 in 1976-77	7 14.27 in 1905-06	7 2.68 in 1917-18
8 65.8 in 2015-16	8 57.9 in 2009-10	8 14.09 in 1978-79	8 2.75 in 1942-43
9 65.6 in 2012-13	9 58.2 in 1963-64	9 13.94 in 1963-64	9 2.89 in 1904-05
10 65.5 in 2007-08	10 58.3 in 1969-70	10 13.57 in 1925-26	10 3.19 in 1948-49
65.5 in 1936-37	58.3 in 1895-96
		77 5.99 in 2019-20	43 5.99 in 2019-20

Normal Temperature for Winter (Dec/Jan/Feb) at PLCF1 = 62.1°

Normal Rainfall for Winter (Dec/Jan/Feb) at PLCF1 = 8.10 in.

LAKELAND AREA (records began in February 1915):

Warmest Februarys		Coolest Februarys		Wettest Februarys		Driest Februarys	
1	72.8 in 2018	1	52.8 in 1958	1	9.60 in 1983	1	Trace in 1918
2	71.6 in 1932	2	54.7 in 1947	2	8.40 in 1936	2	0.14 in 1989
3	71.1 in 2019	3	55.0 in 1978	3	8.25 in 1998	3	0.17 in 1945
4	70.4 in 1918	4	55.8 in 1968	4	7.21 in 1937	4	0.20 in 1916
5	70.1 in 1990	5	55.9 in 2010	5	6.59 in 1963	5	0.25 in 1932
	70.1 in 1949	6	56.7 in 1941	6	5.89 in 1915	6	0.26 in 1949
7	69.8 in 1982	7	56.8 in 1942	7	5.65 in 2015		0.26 in 1935
8	69.6 in 1927	8	57.3 in 1964	8	5.55 in 1919	8	0.27 in 1976
9	69.3 in 1939		57.3 in 1963	9	5.36 in 1972	9	0.48 in 1999
10	68.8 in 2001	10	57.9 in 1973	10	5.11 in 1992		0.48 in 1944
			57.9 in 1970				
...		
22	67.4 in 2020	84	67.4 in 2020	77	1.29 in 2020	30	1.29 in 2020

Normal Temperature for February at LLDF1 = 63.3°

Normal Rainfall for February at LLDF1 = 3.00 in.

Warmest Winters		Coolest Winters		Wettest Winters		Driest Winters	
1	70.9 in 1931-32	1	55.2 in 1957-58	1	23.72 in 1997-98	1	1.49 in 1934-35
2	68.1 in 1948-49	2	56.6 in 1976-77	2	19.49 in 2002-03	2	1.64 in 1975-76
3	68.0 in 2016-17	3	56.8 in 1977-78	3	16.60 in 1935-36	3	1.82 in 1938-39
4	66.9 in 1949-50	4	57.1 in 1969-70	4	15.22 in 2018-19	4	2.04 in 1927-28
5	66.7 in 1936-37	5	57.4 in 1963-64	5	12.94 in 1978-79	5	2.10 in 1943-44
	66.7 in 1932-33		57.4 in 1939-40	6	12.66 in 1982-83	6	2.21 in 1931-32
7	66.6 in 2019-20	7	58.2 in 1982-83	7	11.97 in 1925-26	7	2.47 in 1948-49
8	66.4 in 1956-57		58.2 in 1980-81	8	11.96 in 1963-64	8	2.56 in 2011-12
9	66.3 in 1971-72	9	58.6 in 1962-63	9	11.81 in 1965-66	9	2.71 in 2000-01
10	66.2 in 2012-13	10	58.8 in 2009-10	10	11.58 in 1992-93	10	2.77 in 1917-18
				
				69	5.46 in 2019-20	37	5.46 in 2019-20

Normal Temperature for Winter (Dec/Jan/Feb) at LLDF1 = 62.3°

Normal Rainfall for Winter (Dec/Jan/Feb) at LLDF1 = 8.24 in.

BARTOW (records began in June 1892):

Warmest Februarys		Coolest Februarys		Wettest Februarys		Driest Februarys	
1	71.6 in 2018	1	54.1 in 1895	1	9.15 in 1998	1	0.00 in 1911
2	71.0 in 1949	2	54.8 in 1958	2	9.12 in 1936	2	0.03 in 1932
3	70.1 in 1959	3	54.9 in 1912	3	8.33 in 1983	3	0.07 in 2001
4	69.7 in 2014	4	56.2 in 1968	4	8.11 in 1963	4	0.14 in 1916
5	69.6 in 2019	5	56.3 in 2010	5	7.30 in 1899	5	0.21 in 2000
	69.6 in 1990	6	56.4 in 1947	6	6.41 in 1937	6	0.24 in 1989
	69.6 in 1982	7	57.8 in 1901	7	6.33 in 1913	7	0.26 in 1945
8	69.5 in 2001	8	57.9 in 1980	8	6.23 in 1960	8	0.33 in 1950
	69.5 in 1903	9	58.0 in 1977	9	6.16 in 1972	9	0.37 in 2009
10	68.9 in 1975	10	58.1 in 1964	10	5.76 in 1924	10	0.40 in 1999
...		
20	66.4 in 2020	70	66.4 in 2020	74	1.89 in 2020	55	1.89 in 2020
					1.89 in 1921		1.89 in 1921

Normal Temperature for February at BARF1 = 64.5°

Normal Rainfall for February at BARF1 = 2.36 in.

Warmest Winters		Coolest Winters		Wettest Winters		Driest Winters	
1	68.9 in 1948-49	1	56.7 in 1957-58	1	24.41 in 1997-98	1	1.57 in 1938-39
2	67.5 in 2013-14	2	57.8 in 1909-10	2	19.39 in 2002-03	2	1.65 in 1943-44
3	66.8 in 1949-50	3	58.0 in 1980-81	3	18.87 in 1935-36	3	1.72 in 1934-35
4	66.7 in 2016-17	4	58.5 in 1969-70	4	16.42 in 1983-84	4	1.77 in 2011-12
5	66.3 in 1998-99	5	58.7 in 1963-64	5	16.18 in 1914-15	5	1.83 in 1984-85
	66.3 in 1956-57	6	59.4 in 2010-11	6	16.06 in 1905-06	6	1.89 in 1910-11
7	66.2 in 1971-72	7	59.5 in 1962-63	7	15.37 in 1898-99	7	2.03 in 2000-01
8	65.8 in 1988-89	8	59.7 in 1903-04	8	15.02 in 1925-26	8	2.15 in 1915-16
	65.8 in 1974-75	9	59.8 in 1911-12	9	13.59 in 1957-58	9	2.16 in 1949-50
	65.8 in 1912-13	10	59.9 in 1968-69	10	13.23 in 1965-66	10	2.22 in 1904-05
11	65.6 in 2001-02		59.9 in 1954-55	
12	65.3 in 2019-20			80	5.57 in 2019-20	48	5.57 in 2019-20

Normal Temperature for Winter (Dec/Jan/Feb) at BARF1 = 63.3°

Normal Rainfall for Winter (Dec/Jan/Feb) at BARF1 = 7.45 in.

WINTER HAVEN AREA (records began in March 1941):

Warmest Februarys		Coolest Februarys		Wettest Februarys		Driest Februarys	
1	72.8 in 2019	1	54.0 in 1958	1	10.61 in 1998	1	0.20 in 1945
2	72.7 in 2018	2	55.0 in 2010	2	7.82 in 1983	2	0.32 in 1989
3	71.5 in 1949	3	55.5 in 1978	3	6.57 in 1960	3	0.33 in 1944
4	70.1 in 1990	4	56.4 in 1968	4	6.03 in 1963	4	0.41 in 2011
5	70.0 in 1975	5	56.8 in 1969	5	5.86 in 2015	5	0.44 in 1950
6	69.4 in 1982	6	57.0 in 1947	6	5.49 in 1957	6	0.54 in 2009
	69.4 in 1959	7	57.9 in 1964	7	5.08 in 2002	7	0.56 in 2000
8	69.0 in 1997	8	58.5 in 1980	8	5.05 in 1972	8	0.58 in 1949
9	68.9 in 1962	9	58.9 in 1977	9	4.73 in 1971	9	0.60 in 1954
10	68.4 in 2001	10	59.0 in 1963	10	4.66 in 1967	10	0.64 in 1976
...		
16	67.4 in 2020	54	67.4 in 2020	50	1.44 in 2020	28	1.44 in 2020

Normal Temperature for February at GIF = 63.5°

Normal Rainfall for February at GIF = 2.63 in.

Warmest Winters		Coolest Winters		Wettest Winters		Driest Winters	
1	69.4 in 1948-49	1	56.6 in 1957-58	1	24.22 in 1997-98	1	1.75 in 1984-85
2	67.8 in 1949-50	2	56.9 in 1976-77	2	16.55 in 2002-03	2	1.83 in 1943-44
3	67.5 in 1971-72	3	57.7 in 1963-64	3	12.78 in 1965-66	3	2.00 in 2011-12
4	67.4 in 2016-17	4	58.0 in 2009-10	4	12.35 in 1963-64	4	2.28 in 1975-76
	67.4 in 1990-91	5	58.1 in 1977-78	5	12.17 in 1957-58	5	2.79 in 1948-49
	67.4 in 1988-89	6	58.6 in 1968-69	6	12.10 in 1947-48	6	3.00 in 2012-13
7	66.7 in 2019-20	7	58.7 in 2010-11	7	11.84 in 2018-19	7	3.09 in 2000-01
8	66.4 in 1956-57	8	59.1 in 1969-70	8	11.75 in 1983-84	8	3.53 in 2017-18
9	66.2 in 2018-19	9	59.6 in 1962-63	9	11.72 in 1978-79	9	3.54 in 1949-50
10	66.1 in 1974-75	10	60.6 in 1975-76	10	10.68 in 1977-78	10	3.57 in 2008-09
				
				52	5.01 in 2019-20	23	5.01 in 2019-20

Normal Temperature for Winter (Dec/Jan/Feb) at GIF = 62.4°

Normal Rainfall for Winter (Dec/Jan/Feb) at GIF = 7.76 in.

SARASOTA-BRADENTON AREA (records began in January 1911):

Warmest Februarys	Coolest Februarys	Wettest Februarys	Driest Februarys
1 71.9 in 2018	1 54.4 in 1958	1 10.16 in 1983	1 Trace in 1911
2 71.1 in 2019	2 54.8 in 1978	2 9.29 in 1963	2 0.05 in 2001
3 70.5 in 1959	3 55.7 in 2010	3 7.34 in 1915	3 0.11 in 1950
4 69.7 in 1949	4 56.3 in 1977	4 7.13 in 1992	4 0.13 in 1989
5 69.4 in 1990	5 57.3 in 1980	5 6.65 in 1936	5 0.15 in 1932
6 69.1 in 1932	57.3 in 1912	6 6.04 in 1937	6 0.20 in 1918
7 68.4 in 1982	7 57.7 in 1968	7 5.92 in 1942	7 0.21 in 1949
8 68.3 in 1939	8 58.2 in 1942	8 5.91 in 1998	8 0.25 in 1945
9 68.2 in 2012	9 58.4 in 1969	9 5.80 in 1964	9 0.27 in 1944
68.2 in 2001	10 58.5 in 1941	10 5.73 in 1947	10 0.35 in 1976
...	
17 67.3 in 2020		59 1.87 in 2020	52 1.87 in 2020
67.3 in 1975			
67.3 in 1950			

Normal Temperature for February at SRQ = 63.4°

Normal Rainfall for February at SRQ = 2.70 in.

Warmest Winters	Coolest Winters	Wettest Winters	Driest Winters
1 69.1 in 1931-32	1 55.8 in 1976-77	1 28.11 in 1997-98	1 0.14 in 1949-50
2 67.9 in 1949-50	2 56.9 in 1977-78	2 19.08 in 1914-15	2 1.26 in 2000-01
67.9 in 1948-49	3 57.1 in 1980-81	3 14.94 in 1935-36	3 1.35 in 1975-76
4 67.3 in 2019-20	4 57.3 in 1957-58	4 14.44 in 2002-03	4 1.69 in 1948-49
5 67.0 in 2016-17	5 57.6 in 1939-40	5 14.38 in 1977-78	5 1.88 in 1931-32
6 66.9 in 1936-37	6 58.0 in 1930-31	6 13.92 in 1913-14	6 1.90 in 2011-12
7 66.4 in 1956-57	7 58.2 in 2010-11	7 13.71 in 1992-93	7 2.00 in 1934-35
8 66.3 in 2018-19	8 58.6 in 2009-10	8 13.61 in 1963-64	8 2.14 in 1938-39
9 66.1 in 2007-08	9 59.0 in 1963-64	9 13.36 in 1982-83	9 2.86 in 1961-62
10 66.0 in 2011-12	10 59.5 in 1969-70	10 12.99 in 1957-58	10 2.88 in 1943-44
66.0 in 1990-91	59.5 in 1935-36
		67 5.64 in 2019-20	42 5.64 in 2019-20

Normal Temperature for Winter (Dec/Jan/Feb) at SRQ = 62.7°

Normal Rainfall for Winter (Dec/Jan/Feb) at SRQ = 7.72 in.

VENICE (records began in May 1955):

Warmest Februarys	Coolest Februarys	Wettest Februarys	Driest Februarys
1 72.5 in 2018	1 54.2 in 1958	1 6.36 in 1957	1 0.00 in 2001
2 70.7 in 2019	2 55.0 in 1978	2 5.63 in 1998	2 0.10 in 1999
3 70.1 in 1959	3 57.2 in 1980	3 5.62 in 1978	3 0.15 in 1989
4 69.8 in 2012	4 58.1 in 1977	4 5.51 in 1963	4 0.29 in 1988
69.8 in 2001	5 58.3 in 1973	5 5.47 in 1972	5 0.30 in 1997
6 69.5 in 1997	6 58.8 in 1968	6 4.92 in 2002	6 0.36 in 1962
7 68.2 in 1994	7 58.9 in 2010	4.92 in 1964	7 0.39 in 2011
8 68.0 in 1989	8 59.0 in 1964	8 4.57 in 2015	8 0.41 in 1994
9 67.6 in 1956	9 59.7 in 1969	9 4.37 in 1992	9 0.60 in 2000
10 67.5 in 2017	10 60.3 in 2015	10 4.26 in 1960	10 0.71 in 1976
67.5 in 1982	60.3 in 1963
12 67.3 in 2020		42 1.44 in 2020	23 1.32 in 2020
67.3 in 1957			

Normal Temperature for February at VNCF1 = 63.6°

Normal Rainfall for February at VNCF1 = 2.24 in.

Warmest Winters	Coolest Winters	Wettest Winters	Driest Winters
1 68.3 in 1988-89	1 57.0 in 1976-77	1 19.42 in 1997-98	1 1.94 in 2011-12
2 68.1 in 1971-72	2 57.2 in 1957-58	2 14.71 in 1957-58	2 1.99 in 2000-01
3 67.9 in 2016-17	3 57.5 in 1977-78	3 12.68 in 2015-16	3 2.18 in 2016-17
67.9 in 2012-13	4 59.2 in 1975-76	4 12.65 in 1977-78	4 2.21 in 1975-76
5 67.5 in 2011-12	5 59.6 in 1963-64	5 12.35 in 2018-19	5 2.61 in 1961-62
6 67.0 in 1998-99	6 59.7 in 1969-70	6 12.01 in 1972-73	6 2.70 in 1984-85
7 66.6 in 2019-20	7 60.5 in 1962-63	7 11.45 in 1963-64	7 3.19 in 2012-13
8 66.2 in 1996-97	8 60.6 in 2010-11	8 11.34 in 1965-66	8 3.25 in 1996-97
9 65.9 in 2017-18	9 60.7 in 1979-80	9 11.20 in 2009-10	3.25 in 1973-74
10 65.8 in 1956-57	10 60.9 in 2002-03	10 10.94 in 1983-84	10 3.27 in 2008-09
	60.9 in 1968-69		...
			16 4.27 in 2019-20

Normal Temperature for Winter (Dec/Jan/Feb) at VNCF1 = 63.0°

Normal Rainfall for Winter (Dec/Jan/Feb) at VNCF1 = 7.02 in.

MYAKKA RIVER STATE PARK (Temperature records began in March 1956
and Rainfall records began in Sep 1943):

Warmest Februarys	Coolest Februarys	Wettest Februarys	Driest Februarys
1 72.3 in 2018	1 52.7 in 1958	1 11.28 in 1998	1 Trace in 2001
2 71.7 in 2019	2 54.9 in 1968	2 9.55 in 1983	2 0.01 in 1950
3 70.3 in 1982	3 56.7 in 1963	3 6.01 in 1963	3 0.02 in 1999
4 70.0 in 1997	4 56.9 in 2010	4 5.88 in 1981	4 0.23 in 1989
5 69.7 in 1992	5 57.0 in 1978	5 5.49 in 1978	5 0.28 in 1944
6 69.4 in 1959	6 57.9 in 1973	6 5.41 in 1957	6 0.32 in 2011
7 69.1 in 2001	7 58.6 in 1980	7 5.33 in 2015	7 0.34 in 1949
8 68.9 in 2012	8 58.9 in 1977	8 5.21 in 2002	8 0.41 in 1945
68.9 in 1994	9 60.5 in 2009	9 4.97 in 1961	9 0.44 in 1948
10 68.7 in 1990	10 60.9 in 2015	10 4.62 in 1972	10 0.49 in 1976
...
24 64.7 in 2020	30 64.7 in 2020	36 2.48 in 2020	41 2.48 in 2020

Normal Temperature for February at MKCF1 = 64.4°
Normal Rainfall for February at MKCF1 = 2.82 in.

Warmest Winters	Coolest Winters	Wettest Winters	Driest Winters
1 68.4 in 2016-17	1 57.2 in 1962-63	1 27.20 in 1997-98	1 0.04 in 1949-50
2 66.7 in 1971-72	2 58.2 in 1976-77	2 16.36 in 1977-78	2 1.64 in 1943-44
3 66.6 in 1998-99	3 58.5 in 1980-81	3 14.36 in 2015-16	3 1.68 in 2000-01
4 66.5 in 1992-93	4 58.9 in 1977-78	4 14.27 in 1978-79	4 1.77 in 1948-49
5 66.4 in 1991-92	5 59.4 in 2002-03	5 13.83 in 1992-93	5 2.08 in 2011-12
6 66.3 in 2012-13	6 59.6 in 2009-10	6 13.60 in 1972-73	6 2.14 in 1984-85
7 66.1 in 2018-19	7 59.7 in 2010-11	7 13.28 in 1982-83	7 2.26 in 1944-45
66.1 in 2013-14	59.7 in 1960-61	8 12.66 in 1957-58	8 2.51 in 1975-76
66.1 in 1990-91	9 61.3 in 1975-76	9 12.60 in 2018-19	9 3.51 in 1970-71
10 66.0 in 2011-12	10 61.6 in 2000-01	10 12.09 in 2003-04	10 3.71 in 2005-06
66.0 in 1974-75	
...		38 6.33 in 2019-20	37 6.33 in 2019-20
16 65.2 in 2019-20			

Normal Temperature for Winter (Dec/Jan/Feb) at MKCF1 = 63.2°
Normal Rainfall for Winter (Dec/Jan/Feb) at MKCF1 = 8.01 in.

WAUCHULA 2 N (records began in January 1933):

Warmest Februarys		Coolest Februarys		Wettest Februarys		Driest Februarys	
1	71.1 in 1949	1	46.7 in 2010	1	8.92 in 1936	1	0.00 in 2001
2	70.8 in 2018	2	54.4 in 1958	2	8.82 in 1998		0.00 in 2000
3	70.7 in 1939	3	56.3 in 1978	3	7.99 in 1983	3	0.19 in 1945
4	70.1 in 1959	4	57.1 in 1947	4	7.37 in 1963	4	0.22 in 1989
5	69.8 in 1933	5	57.3 in 1968	5	6.29 in 1992	5	0.30 in 1997
6	69.5 in 1982	6	58.3 in 2015	6	6.03 in 2002	6	0.33 in 1950
7	69.4 in 1990	7	58.5 in 2007	7	5.46 in 1960	7	0.45 in 2009
8	69.3 in 1975		58.5 in 1942	8	5.34 in 1942		0.45 in 1949
9	69.1 in 2019	9	58.7 in 1980	9	5.26 in 1937	9	0.52 in 2018
10	68.9 in 1962	10	58.9 in 1964	10	5.24 in 1952	10	0.58 in 1962
...		
23	65.6 in 2020	60	65.6 in 2020	58	1.47 in 2020	29	1.47 in 2020
	65.6 in 1989		65.6 in 1989				

Normal Temperature for February at WAUF1 = 63.9°

Normal Rainfall for February at WAUF1 = 2.71 in.

Warmest Winters		Coolest Winters		Wettest Winters		Driest Winters	
1	68.8 in 1948-49	1	49.6 in 2009-10	1	21.20 in 1997-98	1	0.72 in 1949-50
2	68.5 in 1936-37	2	56.5 in 2010-11	2	16.61 in 1935-36	2	1.45 in 2000-01
3	67.4 in 1971-72	3	58.0 in 1977-78	3	14.21 in 1965-66	3	1.90 in 2011-12
4	67.3 in 2007-08	4	58.1 in 1980-81	4	14.16 in 1957-58	4	2.00 in 1948-49
5	66.4 in 1974-75	5	58.4 in 2002-03	5	13.26 in 1982-83	5	2.11 in 1938-39
6	66.2 in 1990-91	6	58.6 in 1969-70	6	12.58 in 1972-73	6	2.13 in 1934-35
7	66.0 in 2016-17	7	58.7 in 1976-77	7	12.15 in 1978-79	7	2.33 in 1975-76
8	65.9 in 1988-89		58.7 in 1939-40	8	11.65 in 2009-10	8	2.34 in 1984-85
9	65.8 in 1956-57	9	58.8 in 2003-04	9	11.53 in 2018-19	9	2.40 in 1999-00
10	65.7 in 1961-62	10	59.0 in 1963-64	10	11.48 in 2015-16	10	2.42 in 1943-44
...				
17	64.5 in 2019-20			44	5.90 in 2019-20	40	5.90 in 2019-20
	64.5 in 2017-18						
	64.5 in 1964-65						

Normal Temperature for Winter (Dec/Jan/Feb) at WAUF1 = 63.0°

Normal Rainfall for Winter (Dec/Jan/Feb) at WAUF1 = 6.90 in.

ARCADIA (records began in November 1899):

Warmest Februarys	Coolest Februarys	Wettest Februarys	Driest Februarys
1 71.2 in 1949	1 54.5 in 2010	1 10.13 in 1983	1 0.00 in 2001
2 71.0 in 2018	2 55.3 in 1958	2 9.71 in 1936	0.00 in 1916
3 70.4 in 1939	3 56.0 in 1978	3 7.08 in 1937	3 0.01 in 1999
4 70.3 in 1959	4 57.1 in 1968	4 6.86 in 1924	4 0.05 in 1918
5 70.1 in 1982	5 57.8 in 1947	5 5.92 in 1982	5 0.10 in 2011
70.1 in 1932	6 58.0 in 1980	6 5.80 in 1963	0.10 in 1911
7 69.9 in 2019	7 58.8 in 1942	7 5.73 in 1998	7 0.15 in 1950
8 69.2 in 1933	58.8 in 1902	8 5.66 in 1902	8 0.24 in 1949
9 69.1 in 1975	9 59.1 in 2015	9 5.54 in 1903	9 0.26 in 1956
10 68.7 in 1997	59.1 in 2007	10 4.92 in 1960	10 0.43 in 1945
68.7 in 1929	59.1 in 1973
...	59.1 in 1970	30 3.08 in 2020	86 3.08 in 2020
23 67.0 in 2020	59.1 in 1912		
67.0 in 2014			

Normal Temperature for February at ARCF1 = 62.7°

Normal Rainfall for February at ARCF1 = 2.56 in.

Warmest Winters	Coolest Winters	Wettest Winters	Driest Winters
1 69.5 in 1931-32	1 57.1 in 1980-81	1 16.85 in 1997-98	1 0.27 in 1949-50
2 68.9 in 1948-49	2 57.2 in 2010-11	2 15.63 in 1935-36	2 0.97 in 1948-49
3 68.6 in 1912-13	3 57.5 in 2009-10	3 14.10 in 1982-83	0.97 in 1910-11
4 67.8 in 1936-37	4 57.7 in 1957-58	4 13.42 in 1977-78	4 1.17 in 2000-01
5 66.8 in 1971-72	5 57.8 in 1977-78	5 13.03 in 1905-06	5 1.62 in 2011-12
66.8 in 1932-33	6 58.5 in 1976-77	6 12.98 in 1978-79	6 2.06 in 1984-85
7 66.7 in 1949-50	58.5 in 1969-70	7 12.78 in 2015-16	2.06 in 1932-33
8 66.6 in 1956-57	8 58.6 in 1939-40	8 12.45 in 1902-03	8 2.15 in 1926-27
9 66.3 in 2016-17	9 59.3 in 1930-31	9 12.14 in 1914-15	9 2.19 in 1975-76
10 66.1 in 1974-75	10 59.5 in 2002-03	10 12.11 in 1941-42	10 2.20 in 2008-09
11 65.5 in 1946-47	59.5 in 1901-02
65.5 in 1908-09		39 6.90 in 2019-20	73 6.90 in 2019-20
13 65.4 in 2019-20		6.90 in 1929-30	6.90 in 1929-30

Normal Temperature for Winter (Dec/Jan/Feb) at ARCF1 = 61.7°

Normal Rainfall for Winter (Dec/Jan/Feb) at ARCF1 = 6.33 in.

ARCHBOLD BIO STATION (records began in January 1969):

Warmest Februarys		Coolest Februarys		Wettest Februarys		Driest Februarys	
1	71.3 in 2018	1	55.2 in 1978	1	10.85 in 1983	1	0.00 in 2001
2	69.8 in 2019	2	55.4 in 2010	2	8.28 in 1998	2	0.22 in 2011
3	69.3 in 2001	3	56.8 in 1980	3	5.00 in 2004	3	0.27 in 1999
4	68.9 in 1990	4	57.8 in 1969	4	4.73 in 1992	4	0.33 in 1989
	68.9 in 1982	5	58.1 in 1973	5	4.32 in 2020	5	0.37 in 2000
6	68.6 in 1975	6	58.2 in 1970	6	3.86 in 2002	6	0.38 in 2009
7	68.1 in 1997	7	59.2 in 1988	7	3.57 in 1970	7	0.49 in 1975
8	67.3 in 2012	8	59.3 in 2009	8	3.51 in 2016	8	0.53 in 1977
9	67.2 in 2017	9	59.8 in 2006	9	3.46 in 1981	9	0.54 in 2018
	67.2 in 1994		59.8 in 1977	10	3.31 in 2006	10	0.73 in 2003
11	67.0 in 2020						

Normal Temperature for February at ACHF1 = 62.6°

Normal Rainfall for February at ACHF1 = 2.55 in.

Warmest Winters		Coolest Winters		Wettest Winters		Driest Winters	
1	67.4 in 2016-17	1	57.0 in 1980-81	1	21.53 in 1997-98	1	0.64 in 2000-01
2	66.2 in 1971-72	2	57.4 in 1969-70	2	16.19 in 2015-16	2	1.44 in 1975-76
3	65.9 in 2019-20	3	58.1 in 1976-77	3	15.77 in 1982-83	3	1.77 in 1984-85
4	65.7 in 1974-75	4	58.2 in 1977-78	4	13.16 in 1978-79	4	2.04 in 2016-17
5	65.4 in 1990-91	5	58.5 in 2010-11	5	11.18 in 1969-70	5	2.43 in 2011-12
6	65.1 in 2015-16	6	58.6 in 2009-10	6	10.16 in 2003-04	6	2.64 in 2008-09
7	65.0 in 2017-18	7	60.0 in 2002-03	7	9.94 in 1972-73	7	2.68 in 1970-71
	65.0 in 2007-08		60.0 in 1995-96	8	9.71 in 1994-95	8	3.44 in 1981-82
9	64.8 in 2018-19	9	60.2 in 1979-80	9	9.12 in 2018-19	9	3.48 in 2017-18
10	64.8 in 2012-13	10	60.4 in 2003-04	10	9.09 in 1977-78	10	3.50 in 1998-99
			60.4 in 1987-88	11	8.77 in 1992-93		
				12	8.18 in 2002-03		
				13	8.15 in 2019-20		

Normal Temperature for Winter (Dec/Jan/Feb) at ACHF1 = 61.7°

Normal Rainfall for Winter (Dec/Jan/Feb) at ACHF1 = 6.39 in.

PUNTA GORDA AREA (records began in July 1914):

Warmest Februarys	Coolest Februarys	Wettest Februarys	Driest Februarys
1 74.4 in 1949	1 57.3 in 1958	1 12.11 in 1936	1 0.00 in 1950
2 73.2 in 2018	2 57.5 in 2010	2 11.05 in 1983	2 0.01 in 2001
3 71.2 in 1959	57.5 in 1978	3 5.68 in 1963	3 0.04 in 1938
71.2 in 1932	4 58.6 in 1968	4 5.61 in 1982	0.04 in 1932
5 70.8 in 2019	5 58.9 in 1980	5 5.59 in 1937	5 0.09 in 1929
6 70.7 in 1918	6 59.3 in 1942	6 5.26 in 1998	6 0.13 in 1999
7 70.6 in 1982	7 59.5 in 1969	7 4.88 in 1924	7 0.18 in 1974
70.6 in 1962	8 59.8 in 1973	8 4.62 in 1964	8 0.25 in 1918
9 70.3 in 1957	9 60.1 in 1920	9 4.50 in 1952	9 0.26 in 1945
10 70.2 in 1939	10 60.2 in 1970	10 4.41 in 1940	10 0.27 in 1949
70.2 in 1933	60.2 in 1947		0.27 in 1926
...
30 67.5 in 2020	70 67.5 in 2020	46 2.11 in 2020	57 2.11 in 2020
67.5 in 2017	67.5 in 2017		

Normal Temperature for February at PGD = 64.7°

Normal Rainfall for February at PGD = 2.48 in.

Warmest Winters	Coolest Winters	Wettest Winters	Driest Winters
1 72.0 in 1948-49	1 59.1 in 1977-78	1 16.32 in 1935-36	1 0.58 in 1949-50
2 70.7 in 1931-32	2 59.3 in 1976-77	2 15.66 in 2015-16	2 0.62 in 2000-01
3 70.2 in 1949-50	59.3 in 1969-70	3 15.45 in 1997-98	3 1.24 in 1938-39
4 69.2 in 1932-33	4 59.7 in 2010-11	4 15.16 in 1982-83	4 1.55 in 1948-49
5 68.5 in 1956-57	5 59.9 in 1957-58	5 12.66 in 1925-26	5 1.67 in 2011-12
6 68.3 in 1961-62	6 60.0 in 1980-81	6 12.65 in 1940-41	6 1.87 in 1927-28
7 68.0 in 1971-72	60.0 in 1963-64	7 11.76 in 1977-78	7 2.08 in 1973-74
8 67.9 in 1936-37	8 60.5 in 1939-40	8 11.71 in 1930-31	8 2.13 in 1932-33
9 67.4 in 2016-17	9 60.6 in 1975-76	9 11.51 in 1978-79	9 2.20 in 1961-62
67.4 in 1946-47	60.6 in 1968-69	10 11.42 in 1958-59	10 2.26 in 2016-17
...
16 66.8 in 2019-20		35 6.75 in 2019-20	67 6.75 in 2019-20
in 2013-14			
in 1988-89			

Normal Temperature for Winter (Dec/Jan/Feb) at PGD = 63.9°

Normal Rainfall for Winter (Dec/Jan/Feb) at PGD = 6.26 in.

FORT MYERS AREA (records began in January 1902):

Warmest Februarys	Coolest Februarys	Wettest Februarys	Driest Februarys
1 74.9 in 2018	1 55.5 in 1958	1 10.82 in 1983	1 Trace in 2001
2 72.9 in 2019	2 57.2 in 1978	2 7.12 in 1998	Trace in 1944
3 72.3 in 1997	3 58.8 in 1947	3 6.79 in 1902	Trace in 1911
4 72.2 in 1982	4 59.2 in 1902	4 5.93 in 1934	4 0.06 in 1948
5 71.8 in 1949	5 59.4 in 2010	5 5.50 in 1936	5 0.07 in 1949
6 71.4 in 2017	59.4 in 1942	6 5.13 in 1913	6 0.08 in 1950
71.4 in 2001	7 59.9 in 1968	7 4.65 in 1963	0.08 in 1929
8 71.3 in 1990	8 60.0 in 1912	8 4.34 in 1952	8 0.10 in 1905
9 71.2 in 2012	9 60.1 in 1970	9 4.00 in 1940	9 0.11 in 2000
10 71.1 in 1959	10 60.4 in 1941	10 3.89 in 1992	0.11 in 1943
...	
18 70.0 in 2020		71 1.35 in 2020	49 1.35 in 2020

Normal Temperature for February at FMY = 66.6°

Normal Rainfall for February at FMY = 2.15 in.

Warmest Winters	Coolest Winters	Wettest Winters	Driest Winters
1 70.9 in 2016-17	1 58.2 in 1957-58	1 18.71 in 2015-16	1 0.45 in 2000-01
2 70.7 in 1931-32	2 59.7 in 1969-70	2 15.59 in 1982-83	2 0.71 in 1948-49
3 70.1 in 1948-49	3 59.8 in 1976-77	3 15.19 in 1997-98	3 0.80 in 1910-11
4 69.8 in 1971-72	4 60.0 in 1977-78	4 13.74 in 1978-79	4 1.14 in 1984-85
5 69.6 in 2019-20	5 61.3 in 1980-81	5 12.26 in 1940-41	5 1.21 in 1926-27
6 69.4 in 1990-91	61.3 in 1939-40	6 12.02 in 1925-26	6 1.42 in 1974-75
7 69.1 in 1936-37	7 61.5 in 1963-64	7 11.51 in 2003-04	7 1.43 in 1904-05
8 69.0 in 2007-08	61.5 in 1950-51	8 11.06 in 1902-03	8 1.47 in 1928-29
9 68.8 in 1996-97	61.5 in 1903-04	9 10.85 in 1957-58	9 1.50 in 1961-62
10 68.7 in 2017-18	10 61.6 in 1930-31	10 10.51 in 1969-70	10 1.53 in 1938-39
68.7 in 2012-13	
68.7 in 2011-12		25 8.13 in 2019-20	94 8.13 in 2019-20

Normal Temperature for Winter (Dec/Jan/Feb) at FMY = 65.7°

Normal Rainfall for Winter (Dec/Jan/Feb) at FMY = 5.80 in.

For more local climate information, please visit our web page at <https://www.weather.gov/tampabay> and look within the "Climate and Past Weather" drop down menu above the map of the area.