



NOAA - National Weather Service

Tampa Bay Area

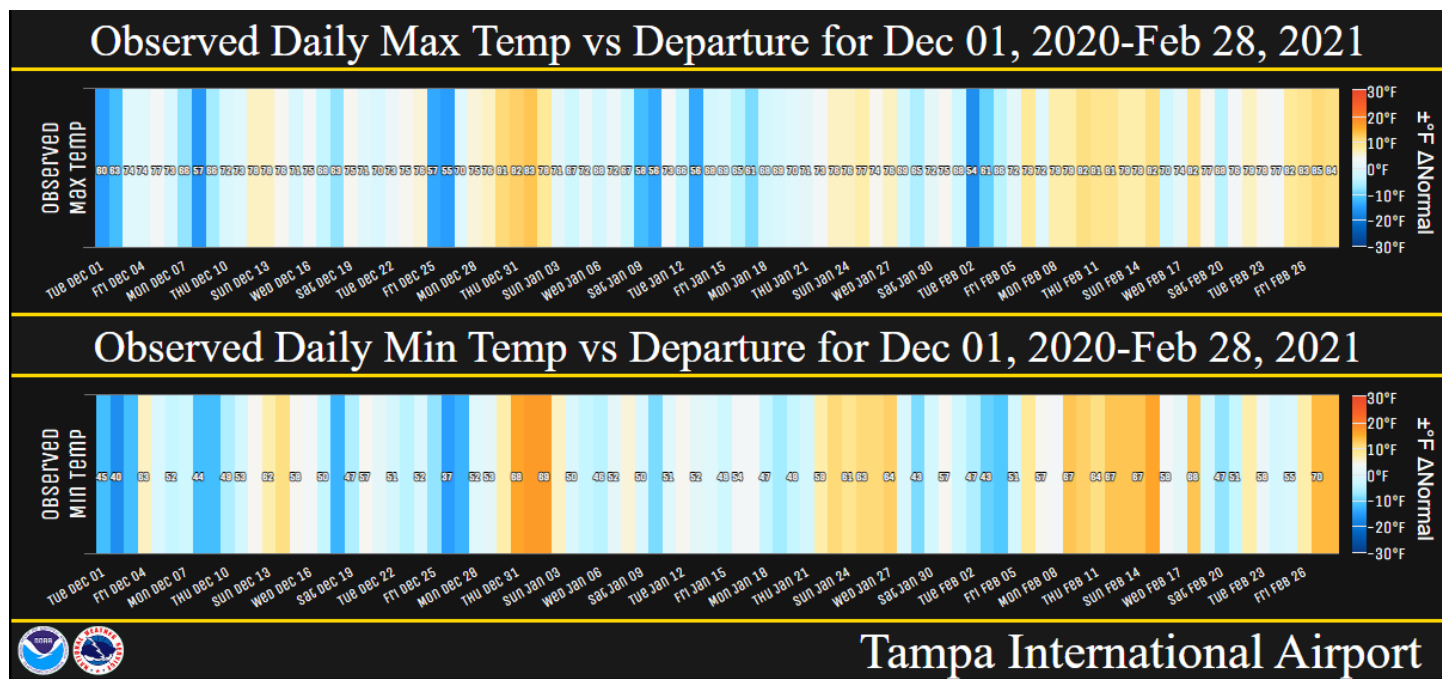
2525 14th Avenue SE, Ruskin, Florida 33570

813-645-2323 <https://weather.gov/tampabay>

February 2021 and Winter 2020-21 Climate Summary

This past winter the ENSO (El Niño Southern Oscillation) was in a La Niña phase which usually means that we'll see overall temperatures near to slightly above normal for the season while rainfall will be below normal. This overall pattern was pretty close for most of West Central and Southwest Florida, but it didn't look this way a few weeks back. We started the season below normal for December, the first month since March 2018 that the region had seen widespread below normal average temperatures. Then during January, we saw a wide range in temperatures, but for the month ended up near to slightly above normal. For February temperatures were very warm on several days and for the month ended up about 2 to 6 degrees above normal across the region which placed a couple of locations in the Top Ten Warmest for February.

The various ups and downs in the temperatures this past winter can be seen in the observed daily maximum and minimum temperatures for Tampa in the graphic below.



FEBRUARY TEMPERATURE RANKINGS (°F)

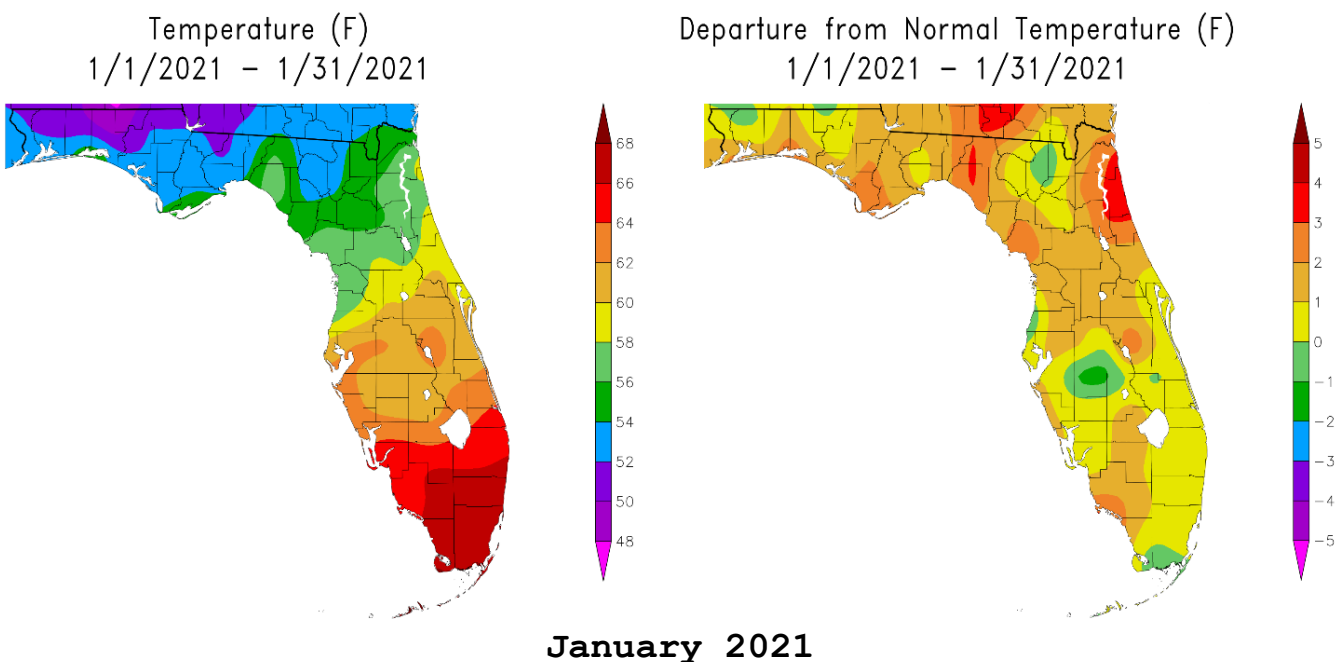
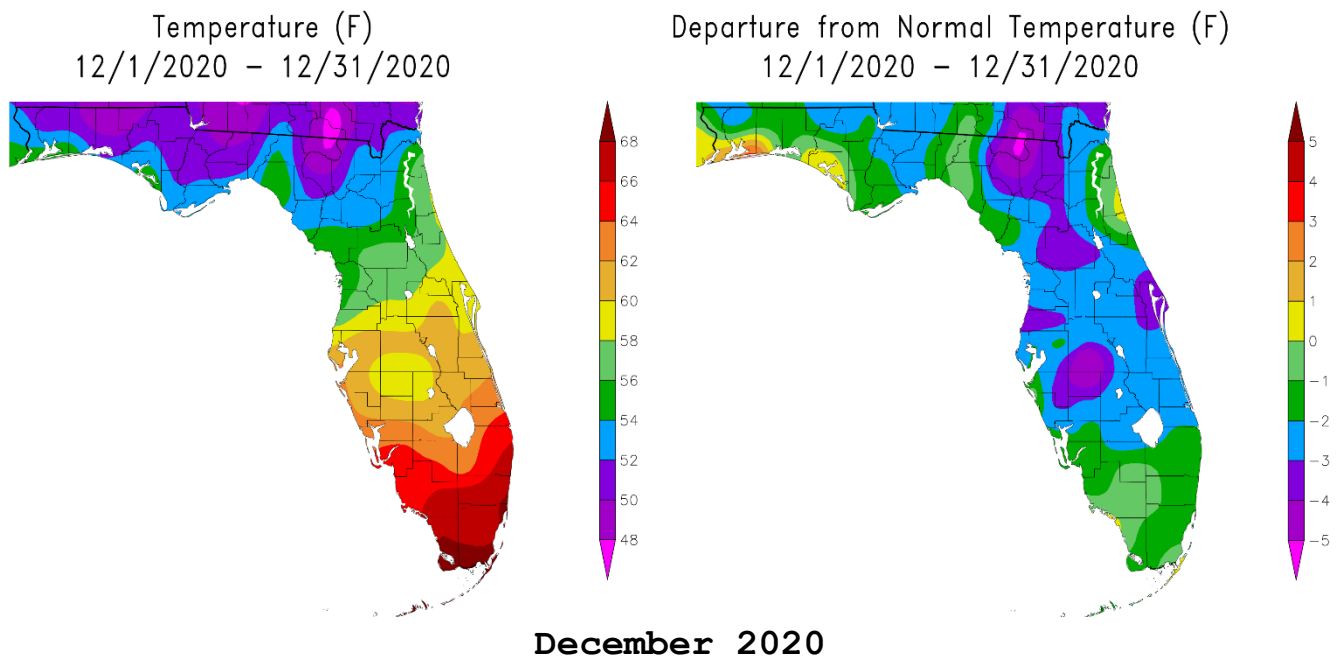
Location	February 2021 Rank	Avg Temp	Normal Feb Temp	Dep fm Normal	Records Began
Fort Myers Area	12th Warmest(tie)	70.8°	66.6°	+4.2°	Jan 1902
Punta Gorda Area	15th Warmest(tie)	69.6°	64.7°	+4.9°	Jul 1914
Plant City	8th Warmest(tie)	68.8°	63.2°	+5.6°	Sep 1892
Lakeland Area	11th Warmest	68.6°	63.3°	+5.3°	Jan 1915
Archbold Bio Stn	7th Warmest	68.2°	62.6°	+5.6°	Jan 1969
Venice	7th Warmest(tie)	68.2°	63.6°	+4.6°	May 1955
Winter Haven Area	14th Warmest	68.1°	63.5°	+4.6°	Mar 1941
Bartow	17th Warmest	67.8°	64.5°	+3.3°	Jun 1892
Arcadia	21st Warmest	67.6°	62.7°	+4.9°	Nov 1899
Sarasota-Bradenton Area	14th Warmest(tie)	67.6°	63.4°	+4.2°	Jan 1911
St Petersburg Area	23rd Warmest(tie)	67.4°	64.1°	+3.3°	Aug 1914
Tampa Area	17th Warmest(tie)	67.3°	63.4°	+3.9°	Apr 1890
Wauchula 2 N	19th Warmest	66.7°	63.9°	+2.8°	Jan 1933
Myakka River State Park	17th Warmest	66.3°	64.4°	+1.9°	Mar 1956
St. Leo	22nd Warmest	66.1°	63.6°	+2.5°	Apr 1895
Tarpon Springs	34th Warmest(tie)	64.6°	62.3°	+2.3°	Jan 1892
Brooksville Area	31st Warmest	64.2°	59.5°	+4.7°	Jan 1892
Inverness 3 SE	20th Warmest	62.6°	59.1°	+3.5°	Jan 1948
Chiefland 5 ESE	14th Warmest	61.2°	57.4°	+3.8°	Jul 1956

As for the Winter 2020-21 (Dec/Jan/Feb) average temperatures ended up generally slightly below normal to slightly above normal.

WINTER (DEC/JAN/FEB) TEMPERATURE (°F) :

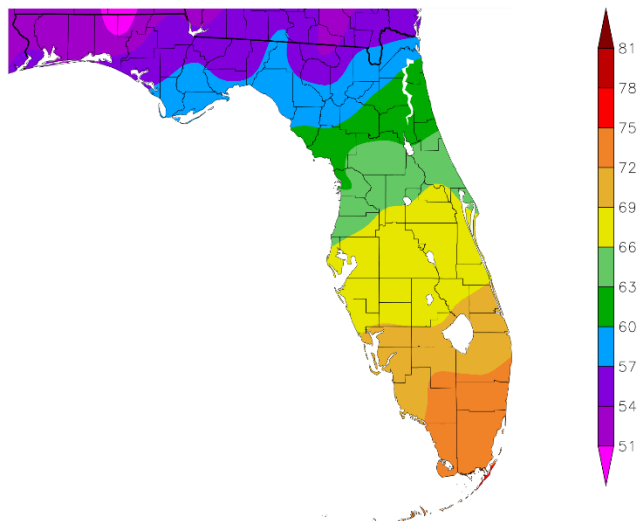
Location	Winter 2020-21 Rank	Avg Temp	Normal Temp	Dep fm Normal	Records Began
Fort Myers - Page Field	34th Warmest	66.7°	65.7°	+1.0°	Jan 1902
Punta Gorda Area	46th Warmest	65.0°	63.9°	+1.1°	Jul 1914
Sarasota-Bradenton Area	31st Warmest(tie)	64.3°	62.7°	+1.6°	Jan 1911
Venice	20th Warmest(tie)	64.1°	63.0°	+1.1°	May 1955
Plant City	25th Warmest(tie)	64.0°	62.1°	+1.9°	Sep 1892
St Petersburg Area	46th Warmest(tie)	63.9°	63.3°	+0.6°	Aug 1914
Lakeland Area	36th Warmest	63.8°	62.3°	+1.5°	Feb 1915
Tampa Area	42nd Warmest	63.3°	62.4°	+0.9°	Apr 1890
Winter Haven Area	30th Warmest	63.1°	62.4°	+0.7°	Mar 1941
Archbold Bio Stn	23rd Warmest(tie)	62.8°	61.7°	+1.1°	Jan 1969
Arcadia	55th Warmest(tie)	62.6°	61.7°	+0.9°	Nov 1899
Bartow	32nd Coolest	62.4°	63.3°	-0.9°	Jun 1892
Myakka River State Park	15th Coolest	62.3	63.2	-0.9	Mar 1956
St. Leo	61st Coolest	61.7°	62.4°	-0.7°	Apr 1895
Wauchula 2 N	20th Coolest(tie)	61.7°	63.0°	-1.3°	Jan 1933
Tarpon Springs	30th Coolest(tie)	59.6°	61.3°	-1.7°	Jan 1892
Brooksville Area	33rd Warmest(tie)	59.4°	58.5°	+0.9°	Jan 1892
Inverness 3 SE	30th Warmest	58.7°	58.0°	+0.7°	Jan 1948
Chiefland 5 ESE	27th Warmest	57.2°	56.0°	+1.2°	Jul 1956

Below are graphics that depict the monthly/season average and departure from normal (average) temperature (based on the 1981-2010 Normals) across the area.

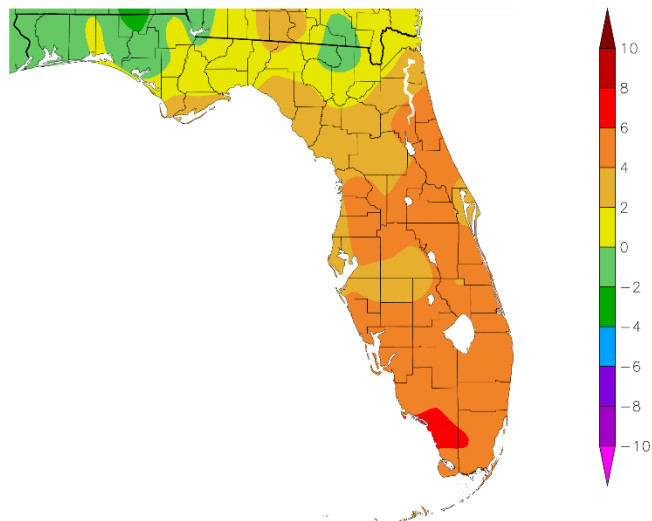


Graphics Source: NOAA Regional Climate Centers

Temperature (F)
2/1/2021 - 2/28/2021

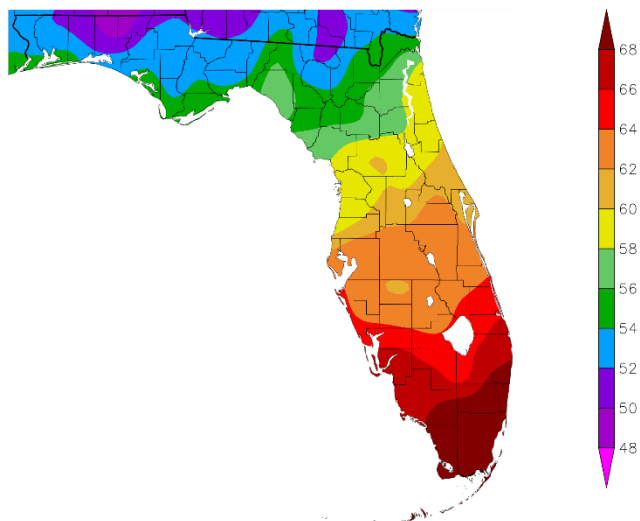


Departure from Normal Temperature (F)
2/1/2021 - 2/28/2021

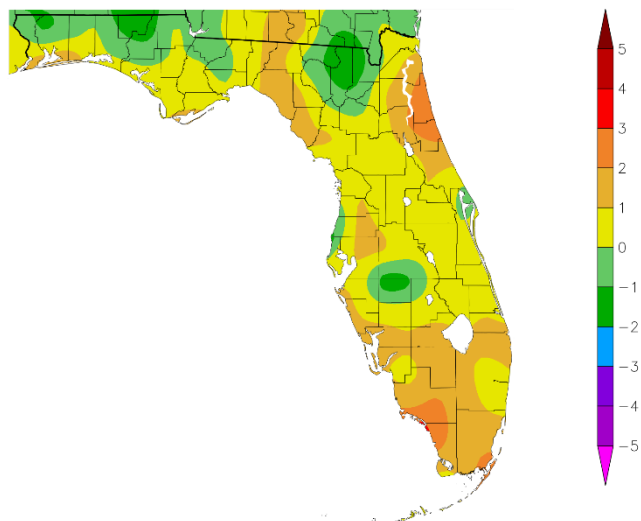


February 2021

Temperature (F)
12/1/2020 - 2/28/2021



Departure from Normal Temperature (F)
12/1/2020 - 2/28/2021



Winter 2020-21

Graphics Source: NOAA Regional Climate Centers

As for rainfall we saw varying amounts this February with most areas below normal, except around the Interstate 4 corridor and some spots over the southern interior and inland southwest Florida.

FEBRUARY RAINFALL (inches):

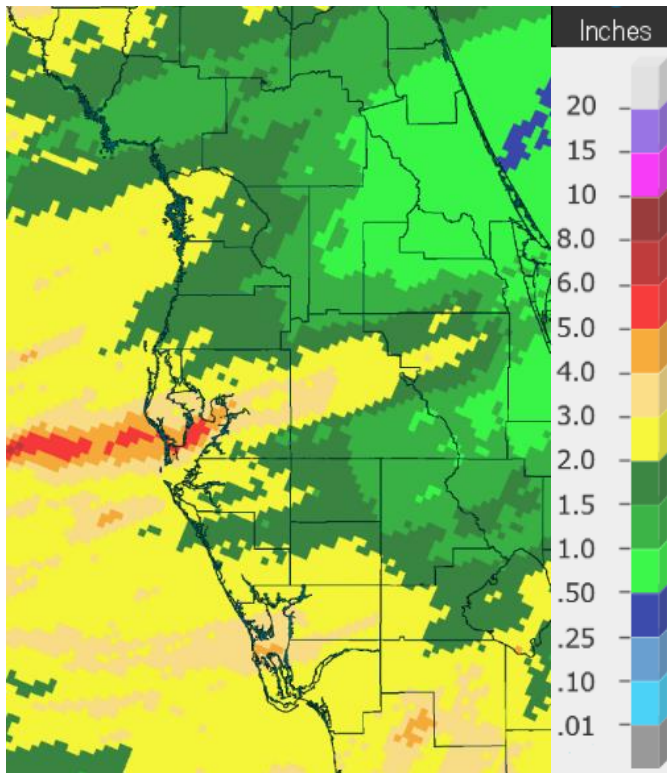
Location	Feb 2021 Rain Total	Normal Feb Rain	Dep fm Normal	Ranking	Records Began
Winter Haven Area	5.86	2.63	+3.23	5th Wettest	Mar 1941
Chiefland 5 ESE	5.83	3.83	+2.00	14th Wettest	Jul 1956
Lakeland Area	4.31	3.00	+1.31	16th Wettest	Jan 1915
Bartow	4.29	2.36	+1.93	30th Wettest	Jun 1892
Tampa Area	3.74	2.81	+0.93	36th Wettest	Apr 1890
Plant City	3.26	2.72	+0.54	49th Wettest	Sep 1892
Inverness 3 SE	3.23	2.86	+0.37	27th Wettest	Jan 1948
Fort Myers Area	2.98	2.15	+0.83	30th Wettest	Jan 1902
St. Leo	2.73	3.04	-0.31	68th Driest	Apr 1895
Brooksville Area	2.40	3.37	-0.97	57th Driest	Jan 1892
Archbold Bio Stn	2.40	2.55	-0.15	36th Driest	Jan 1969
Wauchula 2 N	2.37	2.71	-0.34	47th Driest	Jan 1933
St. Petersburg Area	2.27	2.72	-0.45	57th Driest	Aug 1914
Sarasota-Bradenton Area	2.19	2.70	-0.51	57th Driest	Jan 1911
Myakka River State Park	2.09	2.82	-0.73	34th Driest	Sep 1943
Arcadia	1.75	2.56	-0.81	53rd Driest	Nov 1899
Venice	1.08	2.24	-1.16	20th Driest	May 1955
Punta Gorda Area	0.74	2.48	-1.74	23rd Driest	May 1914

For the entire winter rainfall ended up below normal across most of the region, except again over parts of the central interior and inland southwest.

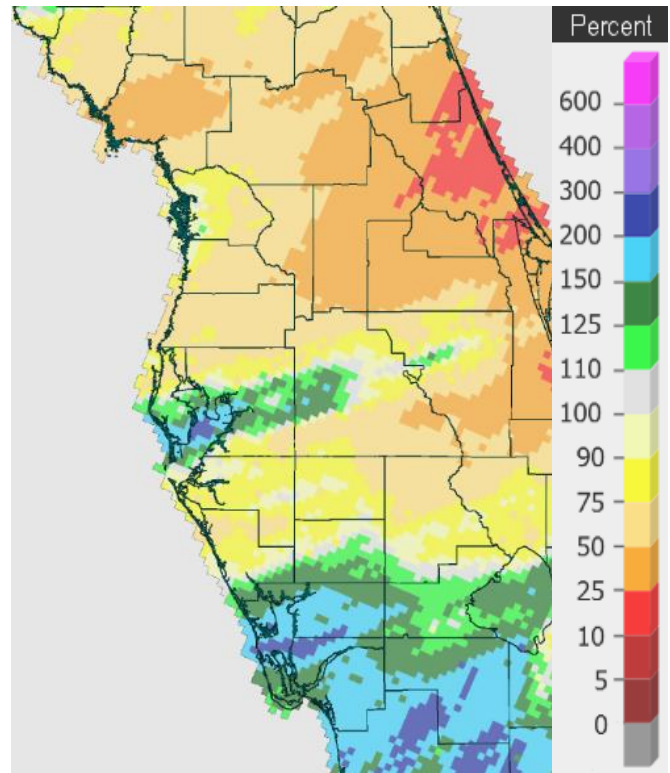
WINTER (DEC/JAN/FEB) RAINFALL (inches):

Location	Winter 2021 Rain Total	Normal Rain	Dep fm Normal	Ranking	Records Began
Chiefland 5 ESE	9.63	10.44	-0.81	27th Driest	Jul 1956
Winter Haven Area	8.73	7.76	+0.97	21st Wettest	Mar 1941
Bartow	8.37	7.45	+0.92	45th Wettest	Jun 1892
Lakeland Area	8.09	8.24	-0.15	71st Driest	Jan 1915
Tampa Area	7.35	7.51	-0.16	80th Driest	Apr 1890
St. Petersburg Area	6.58	8.04	-1.46	51st Driest	Aug 1914
Plant City	6.28	8.10	-1.82	50th Driest	Sep 1892
Inverness 3 SE	6.07	8.31	-2.24	16th Driest	Jan 1948
Fort Myers Area	5.83	5.80	+0.03	77th Wettest	Jan 1902
Archbold Bio Stn	5.64	6.39	-0.75	28th Driest	Jan 1969
Brooksville Area	4.78	8.98	-4.20	26th Driest	Jan 1892
Sarasota-Bradenton Area	4.82	7.72	-2.90	32nd Driest	Jan 1911
Arcadia	4.72	6.33	-1.61	49th Driest	Nov 1899
St. Leo	4.62	9.08	-4.46	33rd Driest	Apr 1895
Myakka River State Park	4.26	8.01	-3.75	17th Driest	Sep 1943
Wauchula 2 N	4.09	6.90	-2.81	22nd Driest	Jan 1933
Punta Gorda Area	3.99	6.26	-2.27	34th Driest	May 1914
Venice	3.72	7.02	-3.30	13th Driest	May 1955

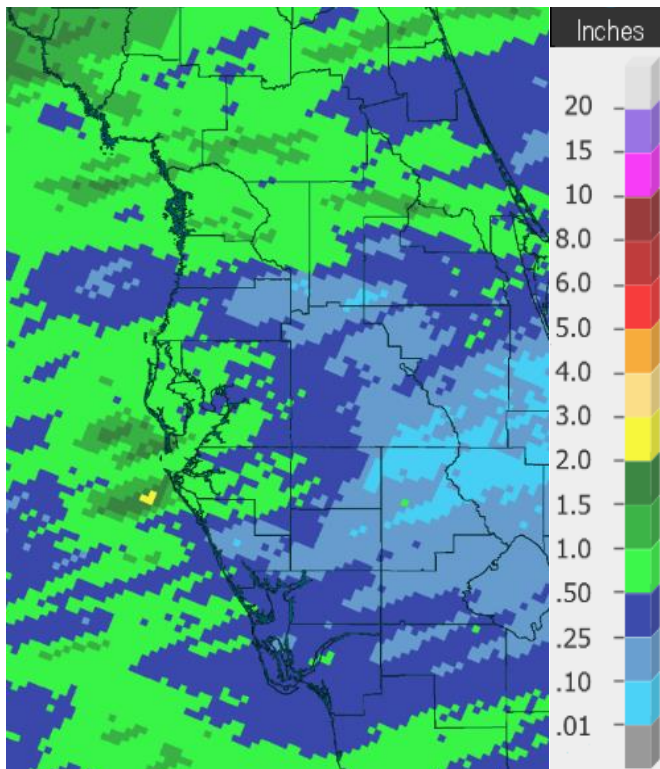
On the following pages are graphics that depict the monthly/season total and departure from normal (average) rainfall (based on the 1981-2010 Normals) across the area.



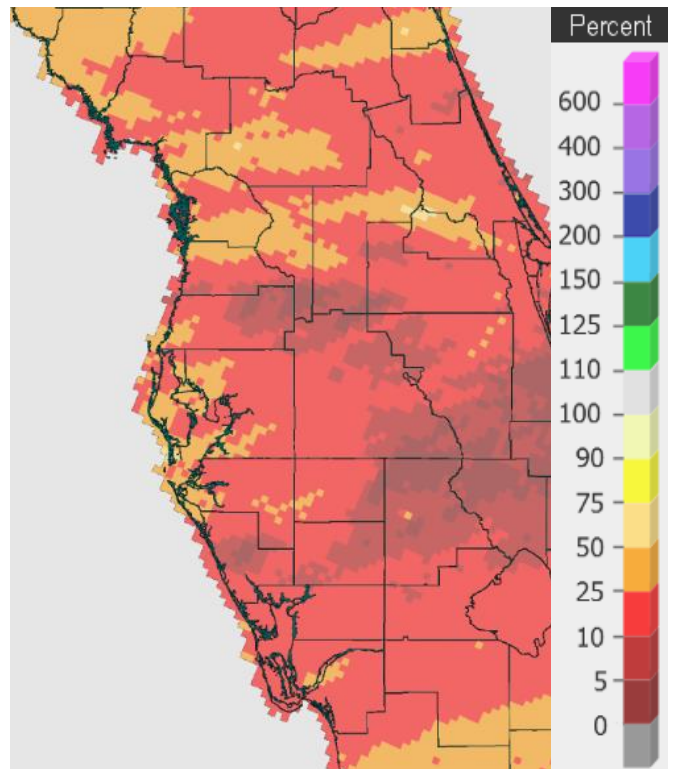
Rainfall December 2020



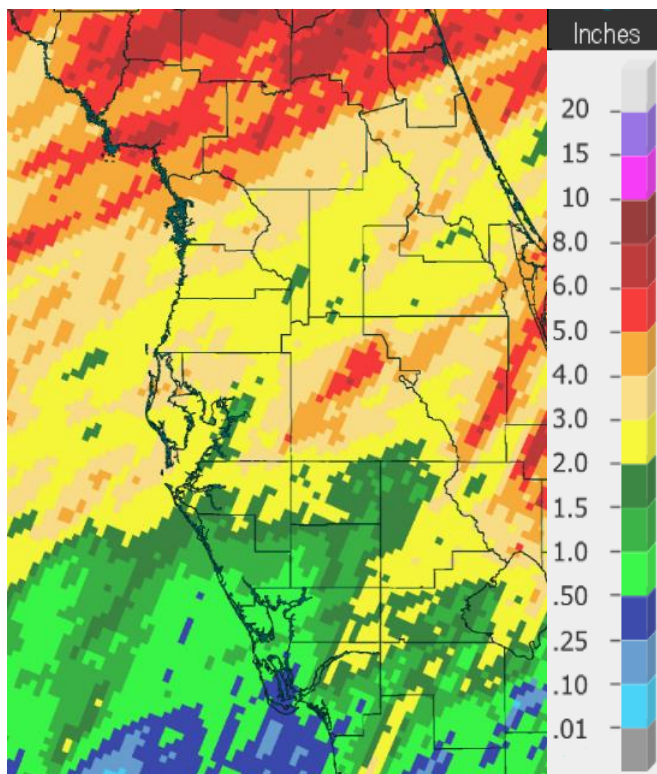
Percent of Normal



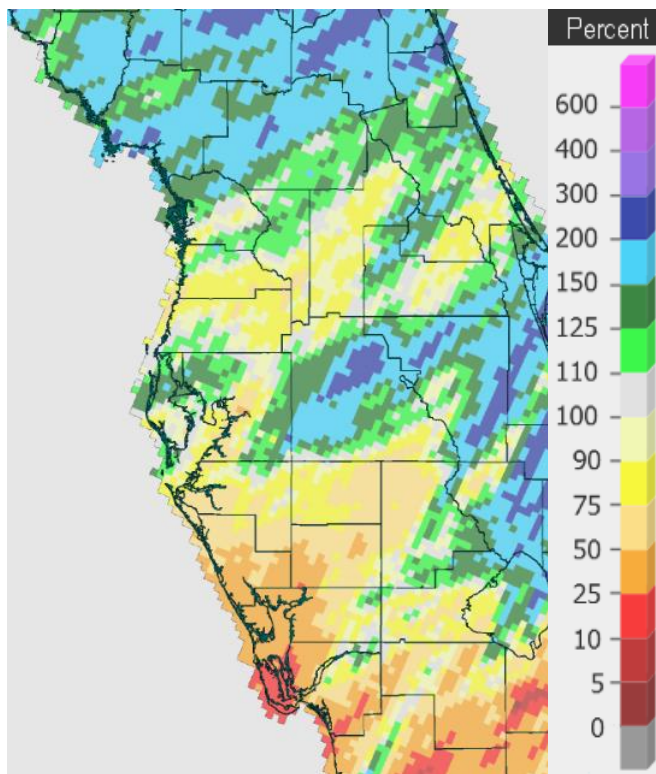
Rainfall January 2021



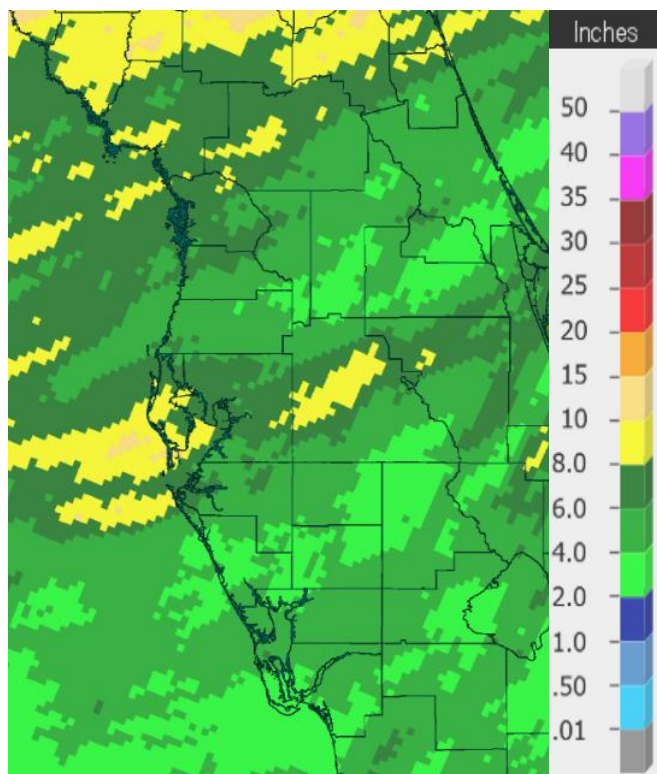
Percent of Normal



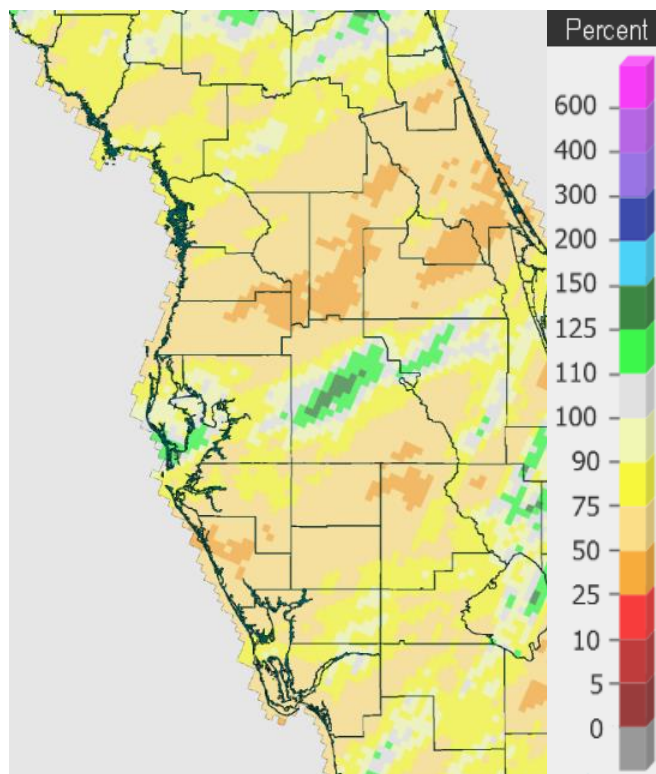
Rainfall February 2021



Percent of Normal



Rainfall Winter 2020-21



Percent of Normal

On the following pages are tables of the Top Ten Warmest, Coolest, Wettest, and Driest Februarys and Winters (December/January/February) at some official NWS locations, which include the average/total for this month/season where available, and the 1981-2010 Normal (average) temperature and rainfall.

CHIEFLAND 5 ESE (records began in July 1956):

Warmest Februarys	Coolest Februarys	Wettest Februarys	Driest Februarys
1 68.8 in 2018	1 48.4 in 1958	1 15.20 in 1998	1 0.12 in 1962
2 65.3 in 2019	2 49.3 in 2010	2 9.06 in 2004	2 0.72 in 1994
3 64.2 in 1990	49.3 in 1968	3 8.73 in 1970	3 0.77 in 1980
4 64.1 in 1959	4 50.0 in 1978	4 7.75 in 1964	4 0.78 in 1989
5 64.0 in 2017	5 52.3 in 1963	5 7.42 in 1966	5 0.82 in 1997
64.0 in 1982	6 52.4 in 1964	6 7.05 in 1965	6 0.98 in 1996
7 63.3 in 1975	7 53.0 in 1969	7 6.55 in 1993	7 1.01 in 1991
63.3 in 1957	8 53.1 in 1980	8 6.26 in 1967	8 1.06 in 2000
9 63.1 in 2001	9 53.3 in 1977	9 6.10 in 1963	9 1.21 in 2017
10 62.6 in 1997	10 53.5 in 2009	10 6.01 in 1978	10 1.37 in 2019
11 62.5 in 2012		11 5.97 in 2007	
62.5 in 1962		12 5.92 in 1969	
13 61.9 in 1994		13 5.91 in 1961	
14 61.2 in 2021		14 5.83 in 2021	
61.2 in 1989			

Normal Temperature for February at CHIF1 = 57.4°

Normal Rainfall for February at CHIF1 = 3.83 in.

Warmest Winters	Coolest Winters	Wettest Winters	Driest Winters
1 62.0 in 1956-57	1 50.8 in 1957-58	1 30.55 in 1997-98	1 2.18 in 1956-57
2 61.7 in 1971-72	2 51.7 in 1977-78	2 26.40 in 1963-64	2 3.86 in 2000-01
3 61.5 in 1998-99	51.7 in 1963-64	3 20.46 in 1969-70	3 4.21 in 1961-62
4 61.1 in 1990-91	4 52.0 in 1976-77	4 19.65 in 1964-65	4 5.19 in 2016-17
5 60.9 in 2019-20	5 52.1 in 2009-10	5 17.59 in 1977-78	5.19 in 1980-81
6 60.8 in 1973-74	6 52.7 in 2010-11	6 17.58 in 1978-79	6 5.26 in 2011-12
7 60.2 in 2017-18	52.7 in 1980-81	7 16.42 in 1965-66	7 5.42 in 2004-05
60.2 in 1974-75	8 52.9 in 1969-70	8 16.37 in 2018-19	8 5.49 in 1984-85
9 59.6 in 1988-89	9 53.2 in 1968-69	9 16.27 in 2005-06	9 6.00 in 1994-95
59.6 in 1964-65	10 53.7 in 2002-03	10 15.89 in 2013-14	10 6.17 in 1999-00
	53.7 in 1962-63
...	...	36 9.63 in 2020-21	27 9.63 in 2020-21
27 57.2 in 2020-21	29 57.2 in 2020-21		

Normal Temperature for Winter (Dec/Jan/Feb) at CHIF1 = 56.0°

Normal Rainfall for Winter (Dec/Jan/Feb) at CHIF1 = 10.44 in.

INVERNESS 3 SE (records began in July 1948):

Warmest Februarys	Coolest Februarys	Wettest Februarys	Driest Februarys
1 69.4 in 1949	1 49.7 in 2010	1 10.21 in 1952	1 0.46 in 1999
2 68.9 in 2018	2 50.6 in 1978	2 6.62 in 1998	2 0.52 in 1985
3 68.1 in 1959	3 51.1 in 1958	3 6.45 in 1960	3 0.58 in 1976
4 66.9 in 1957	4 54.0 in 1977	4 6.25 in 1983	4 0.73 in 1950
5 66.1 in 2019	5 54.3 in 1980	5 6.16 in 1978	5 0.75 in 1989
6 65.9 in 1956	6 54.7 in 1968	6 5.64 in 2006	6 0.82 in 2009
7 65.8 in 1982	7 54.8 in 1988	7 5.56 in 1971	7 0.95 in 1949
8 65.7 in 1975	8 54.9 in 2015	8 5.43 in 1964	8 0.99 in 2005
9 64.9 in 1990	9 55.1 in 2009	9 5.35 in 2003	0.99 in 1995
10 64.2 in 2017	10 55.3 in 2006	10 5.34 in 1970	0.99 in 1956
64.2 in 2012	55.3 in 1979
64.2 in 2001	55.3 in 1973	27 3.23 in 2021	46 3.23 in 2021
64.2 in 1950			
...			
20 62.6 in 2021			

Normal Temperature for February at INVFl = 59.1°

Normal Rainfall for February at INVFl = 2.86 in.

Warmest Winters	Coolest Winters	Wettest Winters	Driest Winters
1 67.0 in 1948-49	1 52.5 in 2002-03	1 22.52 in 1997-98	1 1.98 in 1949-50
2 66.0 in 1949-50	2 53.1 in 1977-78	2 17.06 in 1977-78	2 2.49 in 2004-05
3 65.3 in 1956-57	53.1 in 1976-77	3 16.66 in 2018-19	3 2.59 in 1984-85
4 64.1 in 2016-17	4 53.2 in 2009-10	4 14.69 in 1969-70	4 2.98 in 2012-13
5 63.0 in 1971-72	5 53.5 in 1957-58	5 14.46 in 1963-64	5 3.20 in 1956-57
6 62.5 in 1951-52	6 54.1 in 2010-11	6 14.06 in 2002-03	6 3.52 in 1948-49
7 62.3 in 1974-75	7 55.6 in 1987-88	7 13.93 in 1951-52	7 3.81 in 1975-76
62.3 in 1964-65	8 55.9 in 1995-96	8 12.79 in 1978-79	8 3.90 in 2011-12
9 62.2 in 1973-74	9 56.1 in 1963-64	9 12.70 in 1993-94	9 4.02 in 1955-56
62.2 in 1953-54	10 56.3 in 2005-06	10 12.25 in 1983-84	10 4.26 in 1998-99
...	...		11 4.42 in 1988-89
30 58.7 in 2020-21	25 58.7 in 2020-21		12 4.91 in 1999-00
			13 5.18 in 2000-01
			14 5.44 in 1990-91
			15 5.82 in 1991-92
			16 6.07 in 2020-21

Normal Temperature for Winter (Dec/Jan/Feb) at INVFl = 58.0°

Normal Rainfall for Winter (Dec/Jan/Feb) at INVFl = 8.31 in.

BROOKSVILLE AREA (records began in January 1892):

Warmest Februarys	Coolest Februarys	Wettest Februarys	Driest Februarys
1 70.6 in 2018	1 50.4 in 2010	1 10.15 in 1998	1 0.10 in 1911
2 69.9 in 1927	2 52.1 in 1895	2 9.59 in 1952	2 0.11 in 2017
3 69.1 in 1932	3 52.8 in 1902	3 8.84 in 1899	3 0.14 in 2000
4 69.0 in 1949	4 52.9 in 1978	4 8.72 in 2004	4 0.50 in 1945
5 68.8 in 1944	5 54.8 in 1947	5 7.37 in 1936	5 0.54 in 1938
6 68.6 in 2019	54.8 in 1920	6 7.19 in 1983	6 0.53 in 2009
68.6 in 1939	7 55.2 in 1901	7 7.04 in 1903	0.53 in 1939
8 68.4 in 1918	8 55.9 in 2009	8 6.83 in 1971	8 0.54 in 1999
9 68.1 in 1959	9 56.0 in 1963	9 6.78 in 1981	9 0.57 in 2001
10 66.9 in 1975	56.0 in 1942	10 6.52 in 1946	0.57 in 1943
66.9 in 1945	
...	...	72 2.40 in 2021	57 2.40 in 2021
31 64.2 in 2021	85 64.2 in 2021		

Normal Temperature for February at BKV = 59.5°

Normal Rainfall for February at BKV = 3.37 in.

Warmest Winters	Coolest Winters	Wettest Winters	Driest Winters
1 68.2 in 1931-32	1 53.8 in 1901-02	1 22.83 in 1997-98	1 1.09 in 1910-11
2 67.5 in 1948-49	2 54.0 in 2009-10	2 17.83 in 1898-99	2 1.57 in 1906-07
3 66.9 in 1949-50	3 54.5 in 2010-11	3 17.22 in 1935-36	3 1.89 in 2011-12
4 66.1 in 1926-27	4 55.0 in 2002-03	4 16.98 in 1911-12	4 2.44 in 1949-50
5 65.8 in 1912-13	5 55.7 in 1976-77	5 16.44 in 1969-70	5 2.63 in 1938-39
6 65.4 in 1936-37	6 56.2 in 1969-70	6 16.21 in 1902-03	6 2.81 in 1999-00
65.4 in 1932-33	7 56.4 in 2003-04	7 15.51 in 1963-64	7 2.87 in 2008-09
8 65.2 in 1971-72	8 56.7 in 1963-64	8 14.93 in 1913-14	8 3.02 in 1908-09
9 64.3 in 1973-74	9 56.8 in 1939-40	9 14.80 in 2003-04	9 3.26 in 1942-43
10 64.1 in 1974-75	56.8 in 1894-95	10 14.79 in 1977-78	10 3.43 in 1984-85
...
33 59.4 in 2020-21	68 59.4 in 2020-21	102 4.78 in 2020-21	26 4.78 in 2020-21
59.4 in 1979-80	59.4 in 1979-80	4.78 in 1988-89	4.78 in 1988-89
59.4 in 1917-18	59.4 in 1917-18		

Normal Temperature for Winter (Dec/Jan/Feb) at BKV = 58.5°

Normal Rainfall for Winter (Dec/Jan/Feb) at BKV = 8.98 in.

ST LEO (records began in April 1895):

Warmest Februarys	Coolest Februarys	Wettest Februarys	Driest Februarys
1 71.2 in 2018	1 52.7 in 1958	1 11.04 in 1998	1 0.01 in 1911
2 70.2 in 1932	2 53.3 in 2010	2 9.71 in 1899	2 0.14 in 1999
3 69.5 in 1949	3 53.9 in 1978	3 9.48 in 1983	3 0.25 in 1950
4 69.4 in 2019	4 54.4 in 1947	4 8.69 in 1937	4 0.32 in 1945
5 69.1 in 1982	5 54.9 in 1968	5 8.09 in 1936	5 0.40 in 1989
6 69.0 in 1990	6 55.9 in 1912	6 7.22 in 1915	6 0.42 in 1948
7 68.9 in 1959	7 56.0 in 1942	7 6.92 in 1897	7 0.44 in 1916
8 68.7 in 1939	8 56.5 in 1902	8 6.35 in 1971	8 0.48 in 1938
9 68.2 in 1944	9 56.7 in 1964	6.35 in 1952	9 0.51 in 1922
10 68.1 in 1962	10 57.1 in 1970	10 6.31 in 1963	10 0.54 in 2000
...	57.1 in 1941
...	57.1 in 1920	59 2.73 in 2021	68 2.73 in 2021
22 66.1 in 2021	102 66.1 in 2021		

Normal Temperature for February at STLf1 = 63.6°

Normal Rainfall for February at STLf1 = 3.04 in.

Warmest Winters	Coolest Winters	Wettest Winters	Driest Winters
1 68.7 in 1931-32	1 54.7 in 1930-31	1 28.97 in 1997-98	1 1.56 in 1906-07
2 68.0 in 1948-49	2 55.5 in 1957-58	2 23.03 in 1898-99	2 1.72 in 1910-11
3 66.6 in 1949-50	3 56.3 in 1977-78	3 18.02 in 1981-82	3 2.07 in 1949-50
4 66.4 in 1936-37	4 56.4 in 1939-40	4 17.89 in 2002-03	4 2.23 in 1938-39
5 66.1 in 1956-57	5 56.5 in 2009-10	5 16.87 in 1969-70	5 2.62 in 2011-12
6 65.8 in 1971-72	56.5 in 1976-77	6 16.34 in 1935-36	6 2.71 in 1975-76
7 65.7 in 1912-13	7 56.9 in 1969-70	7 15.61 in 1913-14	7 2.81 in 1937-38
8 65.5 in 1998-99	8 57.1 in 2010-11	8 14.90 in 1940-41	8 3.48 in 1915-16
9 65.2 in 2007-08	9 57.3 in 1927-28	9 14.55 in 1902-03	9 3.54 in 2016-17
10 65.1 in 2016-17	10 57.5 in 1935-36	10 14.40 in 1977-78	10 3.65 in 1931-32
65.1 in 1990-91	
...	...	92 4.62 in 2020-21	33 4.62 in 2020-21
59 61.7 in 2020-21	61 61.7 in 2020-21		

Normal Temperature for Winter (Dec/Jan/Feb) at STLf1 = 62.4°

Normal Rainfall for Winter (Dec/Jan/Feb) at STLf1 = 9.08 in.

TARPON SPRINGS (records began in January 1892):

Warmest Februarys	Coolest Februarys	Wettest Februarys	Driest Februarys
1 71.2 in 2018	1 51.8 in 1958	1 10.91 in 1998	1 0.06 in 1911
2 70.7 in 1932	2 52.0 in 1895	2 9.79 in 1899	2 0.17 in 2009
3 69.6 in 2019	3 53.0 in 1978	3 8.90 in 1936	3 0.26 in 1918
69.6 in 1949	4 54.6 in 2010	4 8.56 in 1937	4 0.32 in 1999
5 69.3 in 1990	5 55.0 in 1968	5 8.45 in 1983	5 0.38 in 1997
6 68.9 in 1944	6 55.2 in 1902	6 7.36 in 1971	6 0.40 in 1950
68.9 in 1939	7 55.4 in 1964	7 6.52 in 1903	7 0.41 in 1989
8 68.7 in 1927	55.4 in 1947	8 6.49 in 1963	8 0.44 in 1945
9 68.6 in 1997	9 55.5 in 1980	9 6.31 in 2004	9 0.52 in 1938
10 68.1 in 1982	10 55.7 in 1963	10 6.24 in 1970	10 0.59 in 1944
...	...		
34 64.6 in 2021	90 64.6 in 2021		
in 1992	in 1992		
in 1897	in 1897		

Normal Temperature for February at TRPF1 = 62.3°

Total Rainfall for February 2021 = 3.50 in., but missing rainfall from Feb 11
Normal Rainfall for February at TRPF1 = 2.93 in.

Warmest Winters	Coolest Winters	Wettest Winters	Driest Winters
1 70.5 in 1931-32	1 54.2 in 1957-58	1 29.65 in 1997-98	1 0.97 in 1949-50
2 67.3 in 1949-50	2 55.1 in 1963-64	2 20.41 in 1935-36	2 2.06 in 1910-11
3 66.0 in 1932-33	3 55.8 in 1977-78	3 19.40 in 1898-99	3 2.08 in 1938-39
4 65.9 in 2016-17	4 56.3 in 1980-81	4 18.08 in 1969-70	4 2.14 in 1906-07
5 65.6 in 1990-91	5 56.5 in 1962-63	5 17.47 in 1983-84	5 2.37 in 2000-01
6 65.5 in 1936-37	56.5 in 1939-40	6 17.41 in 2002-03	6 2.67 in 2008-09
7 65.3 in 2019-20	7 56.6 in 2010-11	7 16.44 in 2018-19	7 3.02 in 1975-76
65.3 in 1996-97	56.6 in 1901-02	8 15.17 in 1902-03	8 3.11 in 1934-35
65.3 in 1926-27	9 56.8 in 2009-10	9 14.89 in 1963-64	9 3.54 in 1968-69
65.3 in 1912-13	56.8 in 1976-77	10 14.33 in 1985-86	10 3.56 in 1999-00
	56.8 in 1969-70		
...	...		
85 59.6 in 2020-21	30 59.6 in 2020-21		
59.6 in 1950-51	59.6 in 1950-51		

Normal Temperature for Winter (Dec/Jan/Feb) at TRPF1 = 61.3°

Total Rainfall for Winter 2020-21 (Dec/Jan/Feb) = 6.16 in. but missing Feb 11
Normal Rainfall for Winter (Dec/Jan/Feb) at TRPF1 = 8.87 in.

TAMPA AREA (records began in April 1890):

Warmest Februarys	Coolest Februarys	Wettest Februarys	Driest Februarys
1 74.2 in 2018	1 52.9 in 1958	1 10.92 in 1937	1 0.05 in 1911
2 70.9 in 2019	2 53.2 in 1978	2 10.82 in 1998	2 0.08 in 1918
3 70.8 in 1932	3 54.3 in 1968	3 9.09 in 2006	3 0.21 in 1950
4 70.1 in 1949	4 54.8 in 1947	4 7.95 in 1963	4 0.25 in 1932
5 69.1 in 1990	54.8 in 1895	5 7.43 in 1936	5 0.29 in 1999
69.1 in 1891	6 55.0 in 2010	6 7.35 in 1983	6 0.30 in 2000
7 68.9 in 1959	7 55.8 in 1969	7 6.55 in 2015	7 0.34 in 1949
68.9 in 1927	8 56.2 in 1912	8 6.27 in 1899	8 0.41 in 1991
9 68.8 in 2017	56.2 in 1902	9 6.06 in 1903	0.41 in 1989
10 68.6 in 1997	10 56.6 in 1980	10 5.98 in 1919	10 0.43 in 1994
...	
17 67.3 in 2021		36 3.74 in 2021	95 3.74 in 2021
67.3 in 1957		3.74 in 1952	3.74 in 1952

Normal Temperature for February at TPA = 63.4°

Normal Rainfall for February at TPA = 2.81 in.

Warmest Winters	Coolest Winters	Wettest Winters	Driest Winters
1 70.3 in 1931-32	1 55.2 in 1957-58	1 31.03 in 1997-98	1 0.51 in 1949-50
2 68.4 in 2016-17	2 55.7 in 1977-78	2 17.11 in 2002-03	2 1.41 in 1906-07
68.4 in 1948-49	3 56.0 in 1976-77	3 15.81 in 2018-19	3 1.71 in 1931-32
4 67.0 in 1949-50	4 56.2 in 1980-81	4 15.59 in 1898-99	4 1.76 in 1975-76
5 66.8 in 2017-18	5 56.5 in 1969-70	5 14.86 in 1936-37	5 1.86 in 1910-11
6 66.7 in 1936-37	6 56.8 in 1963-64	6 14.53 in 1914-15	6 2.15 in 1948-49
7 66.5 in 2019-20	7 57.2 in 1939-40	7 13.78 in 1902-03	7 2.54 in 1938-39
8 66.1 in 2011-12	8 57.3 in 1968-69	8 13.77 in 1941-42	8 2.76 in 1943-44
66.1 in 1912-13	9 57.4 in 1901-02	9 13.74 in 1935-36	9 2.85 in 1934-35
10 66.0 in 1990-91	10 57.7 in 2009-10	10 12.76 in 1963-64	10 2.87 in 1904-05
...
42 63.3 in 2020-21	90 63.3 in 2020-21	52 7.35 in 2020-21	80 7.35 in 2020-21

Normal Temperature for Winter (Dec/Jan/Feb) at TPA = 62.4°

Normal Rainfall for Winter (Dec/Jan/Feb) at TPA = 7.51 in.

ST PETERSBURG – ALBERT WHITTED (records began in August 1914):

Warmest Februarys		Coolest Februarys		Wettest Februarys		Driest Februarys	
1	72.6 in 2018	1	55.7 in 1978	1	12.71 in 1998	1	0.12 in 1918
2	72.3 in 1932	2	55.9 in 2010	2	10.93 in 1937	2	0.18 in 2001
3	71.1 in 1949	3	57.3 in 1964	3	9.06 in 1983	3	0.24 in 1976
4	70.1 in 2019		57.3 in 1947	4	8.26 in 1963	4	0.25 in 1999
5	70.0 in 1959	5	58.3 in 1940	5	7.96 in 1936	5	0.29 in 2012
6	69.9 in 1927	6	58.8 in 1963	6	6.69 in 1946	6	0.34 in 1949
7	69.6 in 1957	7	58.9 in 1980	7	6.37 in 1972	7	0.43 in 1989
8	69.4 in 1944	8	59.0 in 1968	8	5.97 in 1964	8	0.44 in 1944
9	69.3 in 1982	9	59.3 in 1941	9	5.67 in 1958	9	0.45 in 1950
	69.3 in 1939	10	59.5 in 1977	10	5.57 in 1919	10	0.49 in 1922
...			59.5 in 1942	
23	67.4 in 2021			50	2.27 in 2021	57	2.27 in 2021
	67.4 in 2012						
	67.4 in 1922						

Normal Temperature for February at SPG = 64.1°

Normal Rainfall for February at SPG = 2.72 in.

Warmest Winters		Coolest Winters		Wettest Winters		Driest Winters	
1	72.1 in 1931-32	1	58.1 in 1939-40	1	32.36 in 1997-98	1	0.59 in 1949-50
2	69.4 in 1948-49	2	58.2 in 1963-64	2	20.23 in 2002-03	2	1.49 in 2016-17
3	68.3 in 1971-72	3	58.5 in 2009-10	3	17.14 in 1963-64	3	1.51 in 2000-01
4	68.1 in 1936-37		58.5 in 1976-77	4	16.95 in 1914-15	4	1.54 in 1975-76
5	67.8 in 1949-50	5	58.7 in 1977-78	5	15.15 in 1935-36	5	1.92 in 2011-12
6	67.7 in 2016-17	6	59.2 in 1980-81	6	13.63 in 1947-48	6	2.06 in 1938-39
	67.7 in 2012-13	7	59.3 in 1962-63	7	13.50 in 1969-70	7	2.11 in 1955-56
8	67.6 in 1956-57	8	59.8 in 1969-70	8	13.37 in 1936-37	8	2.21 in 1934-35
9	67.5 in 1932-33	9	60.1 in 1930-31	9	13.14 in 1957-58	9	2.35 in 1948-49
10	67.1 in 1926-27	10	60.5 in 2002-03	10	12.64 in 1945-46	10	2.43 in 1943-44
...		
46	63.9 in 2020-21	49	63.9 in 2020-21	57	6.58 in 2020-21	51	6.58 in 2020-21
	63.9 in 1934-35		63.9 in 1934-35				

Normal Temperature for Winter (Dec/Jan/Feb) at SPG = 63.3°

Normal Rainfall for Winter (Dec/Jan/Feb) at SPG = 8.04 in.

PLANT CITY (records began in September 1892):

Warmest Februarys		Coolest Februarys		Wettest Februarys		Driest Februarys	
1	73.2 in 2018	1	54.6 in 1958	1	9.04 in 1936	1	0.00 in 1911
2	71.9 in 2019	2	54.9 in 2010	2	8.87 in 1899	2	Trace in 1918
3	70.6 in 1949	3	55.9 in 1978	3	8.57 in 1983	3	0.05 in 1989
4	70.1 in 1959	4	56.0 in 1902	4	8.49 in 1998	4	0.09 in 1976
5	69.6 in 1918	5	56.2 in 1947	5	7.97 in 1937	5	0.25 in 1950
6	69.0 in 2017	6	56.7 in 1968	6	7.56 in 1963	6	0.28 in 1932
7	68.9 in 1982		56.7 in 1942	7	6.77 in 1919	7	0.31 in 2000
8	68.8 in 2021		56.7 in 1941	8	6.13 in 1972	8	0.36 in 1945
	68.8 in 1939	9	56.9 in 1931	9	5.98 in 2015	9	0.37 in 1949
10	68.6 in 1990	10	57.1 in 1912	10	5.73 in 1992		0.37 in 1944
				
				49	3.26 in 2021	75	3.26 in 2021

Normal Temperature for February at PLCF1 = 63.2°

Normal Rainfall for February at PLCF1 = 2.72 in.

Warmest Winters		Coolest Winters		Wettest Winters		Driest Winters	
1	68.7 in 1948-49	1	55.2 in 1930-31	1	26.68 in 1997-98	1	1.03 in 1906-07
2	67.3 in 2019-20	2	56.5 in 1935-36	2	17.28 in 1898-99	2	1.06 in 1975-76
3	67.2 in 1971-72	3	56.6 in 1939-40	3	17.16 in 1935-36	3	2.04 in 1910-11
4	66.8 in 1956-57		56.6 in 1901-02	4	16.72 in 2002-03	4	2.15 in 1938-39
5	66.2 in 1949-50	5	56.7 in 1957-58	5	14.99 in 2018-19	5	2.19 in 1908-09
6	66.1 in 2012-13	6	57.2 in 1980-81	6	14.70 in 1914-15	6	2.39 in 2011-12
7	66.0 in 2018-19	7	57.5 in 1976-77	7	14.27 in 1905-06	7	2.68 in 1917-18
8	65.8 in 2015-16	8	57.9 in 2009-10	8	14.09 in 1978-79	8	2.75 in 1942-43
9	65.6 in 2012-13	9	58.2 in 1963-64	9	13.94 in 1963-64	9	2.89 in 1904-05
10	65.5 in 2007-08	10	58.3 in 1969-70	10	13.57 in 1925-26	10	3.19 in 1948-49
	65.5 in 1936-37		58.3 in 1895-96	
...		...		72	6.28 in 2020-21	50	6.28 in 2020-21
25	64.0 in 2020-21	82	64.0 in 2020-21				
	64.0 in 1992-93		64.0 in 1992-93				

Normal Temperature for Winter (Dec/Jan/Feb) at PLCF1 = 62.1°

Normal Rainfall for Winter (Dec/Jan/Feb) at PLCF1 = 8.10 in.

LAKELAND AREA (records began in January 1915):

Warmest Februarys	Coolest Februarys	Wettest Februarys	Driest Februarys
1 72.8 in 2018	1 52.8 in 1958	1 9.60 in 1983	1 Trace in 1918
2 71.6 in 1932	2 54.7 in 1947	2 8.40 in 1936	2 0.14 in 1989
3 71.1 in 2019	3 55.0 in 1978	3 8.25 in 1998	3 0.17 in 1945
4 70.4 in 1918	4 55.8 in 1968	4 7.21 in 1937	4 0.20 in 1916
5 70.1 in 1990	5 55.9 in 2010	5 6.59 in 1963	5 0.25 in 1932
70.1 in 1949	6 56.7 in 1941	6 5.89 in 1915	6 0.26 in 1949
7 69.8 in 1982	7 56.8 in 1942	7 5.65 in 2015	0.26 in 1935
8 69.6 in 1927	8 57.3 in 1964	8 5.55 in 1919	8 0.27 in 1976
9 69.3 in 1939	57.3 in 1963	9 5.36 in 1972	9 0.48 in 1999
10 68.8 in 2001	10 57.9 in 1973	10 5.11 in 1992	0.48 in 1944
11 68.6 in 2021	57.9 in 1970	11 4.92 in 2002	
		12 4.86 in 2006	
		13 4.81 in 1971	
		14 4.56 in 1957	
		15 4.48 in 1930	
		16 4.31 in 2021	

Normal Temperature for February at LLDF1 = 63.3°

Normal Rainfall for February at LLDF1 = 3.00 in.

Warmest Winters	Coolest Winters	Wettest Winters	Driest Winters
1 70.9 in 1931-32	1 55.2 in 1957-58	1 23.72 in 1997-98	1 1.49 in 1934-35
2 68.1 in 1948-49	2 56.6 in 1976-77	2 19.49 in 2002-03	2 1.64 in 1975-76
3 68.0 in 2016-17	3 56.8 in 1977-78	3 16.60 in 1935-36	3 1.82 in 1938-39
4 66.9 in 1949-50	4 57.1 in 1969-70	4 15.22 in 2018-19	4 2.04 in 1927-28
5 66.7 in 1936-37	5 57.4 in 1963-64	5 12.94 in 1978-79	5 2.10 in 1943-44
66.7 in 1932-33	57.4 in 1939-40	6 12.66 in 1982-83	6 2.21 in 1931-32
7 66.6 in 2019-20	7 58.2 in 1982-83	7 11.97 in 1925-26	7 2.47 in 1948-49
8 66.4 in 1956-57	58.2 in 1980-81	8 11.96 in 1963-64	8 2.56 in 2011-12
9 66.3 in 1971-72	9 58.6 in 1962-63	9 11.81 in 1965-66	9 2.71 in 2000-01
10 66.2 in 2012-13	10 58.8 in 2009-10	10 11.58 in 1992-93	10 2.77 in 1917-18
...
36 63.8 in 2020-21	63 63.8 in 2020-21	36 8.09 in 2020-21	71 8.09 in 2020-21

Normal Temperature for Winter (Dec/Jan/Feb) at LLDF1 = 62.3°

Normal Rainfall for Winter (Dec/Jan/Feb) at LLDF1 = 8.24 in.

BARTOW (records began in June 1892):

Warmest Februarys		Coolest Februarys		Wettest Februarys		Driest Februarys	
1	71.6 in 2018	1	54.1 in 1895	1	9.15 in 1998	1	0.00 in 1911
2	71.0 in 1949	2	54.8 in 1958	2	9.12 in 1936	2	0.03 in 1932
3	70.1 in 1959	3	54.9 in 1912	3	8.33 in 1983	3	0.07 in 2001
4	69.7 in 2014	4	56.2 in 1968	4	8.11 in 1963	4	0.14 in 1916
5	69.6 in 2019	5	56.3 in 2010	5	7.30 in 1899	5	0.21 in 2000
	69.6 in 1990	6	56.4 in 1947	6	6.41 in 1937	6	0.24 in 1989
	69.6 in 1982	7	57.8 in 1901	7	6.33 in 1913	7	0.26 in 1945
8	69.5 in 2001	8	57.9 in 1980	8	6.23 in 1960	8	0.33 in 1950
	69.5 in 1903	9	58.0 in 1977	9	6.16 in 1972	9	0.37 in 2009
10	68.9 in 1975	10	58.1 in 1964	10	5.76 in 1924	10	0.40 in 1999
...		
17	67.8 in 2021	74	67.8 in 2021	30	4.29 in 2021	100	4.29 in 2021

Normal Temperature for February at BARF1 = 64.5°

Normal Rainfall for February at BARF1 = 2.36 in.

Warmest Winters		Coolest Winters		Wettest Winters		Driest Winters	
1	68.9 in 1948-49	1	56.7 in 1957-58	1	24.41 in 1997-98	1	1.57 in 1938-39
2	67.5 in 2013-14	2	57.8 in 1909-10	2	19.39 in 2002-03	2	1.65 in 1943-44
3	66.8 in 1949-50	3	58.0 in 1980-81	3	18.87 in 1935-36	3	1.72 in 1934-35
4	66.7 in 2016-17	4	58.5 in 1969-70	4	16.42 in 1983-84	4	1.77 in 2011-12
5	66.3 in 1998-99	5	58.7 in 1963-64	5	16.18 in 1914-15	5	1.83 in 1984-85
	66.3 in 1956-57	6	59.4 in 2010-11	6	16.06 in 1905-06	6	1.89 in 1910-11
7	66.2 in 1971-72	7	59.5 in 1962-63	7	15.37 in 1898-99	7	2.03 in 2000-01
8	65.8 in 1988-89	8	59.7 in 1903-04	8	15.02 in 1925-26	8	2.15 in 1915-16
	65.8 in 1974-75	9	59.8 in 1911-12	9	13.59 in 1957-58	9	2.16 in 1949-50
	65.8 in 1912-13	10	59.9 in 1968-69	10	13.23 in 1965-66	10	2.22 in 1904-05
			59.9 in 1954-55	
...		...		45	8.37 in 2020-21	84	8.37 in 2020-21
37	62.4 in 2020-21	32	62.4 in 2020-21				
	62.4 in 1972-73		62.4 in 1972-73				
	62.4 in 1970-71		62.4 in 1970-71				

Normal Temperature for Winter (Dec/Jan/Feb) at BARF1 = 63.3°

Normal Rainfall for Winter (Dec/Jan/Feb) at BARF1 = 7.45 in.

WINTER HAVEN AREA (records began in March 1941):

Warmest Februarys	Coolest Februarys	Wettest Februarys	Driest Februarys
1 72.8 in 2019	1 54.0 in 1958	1 10.61 in 1998	1 0.20 in 1945
2 72.7 in 2018	2 55.0 in 2010	2 7.82 in 1983	2 0.32 in 1989
3 71.5 in 1949	3 55.5 in 1978	3 6.57 in 1960	3 0.33 in 1944
4 70.1 in 1990	4 56.4 in 1968	4 6.03 in 1963	4 0.41 in 2011
5 70.0 in 1975	5 56.8 in 1969	5 5.86 in 2021	5 0.44 in 1950
6 69.4 in 1982	6 57.0 in 1947	5.86 in 2015	6 0.54 in 2009
69.4 in 1959	7 57.9 in 1964	7 5.49 in 1957	7 0.56 in 2000
8 69.0 in 1997	8 58.5 in 1980	8 5.08 in 2002	8 0.58 in 1949
9 68.9 in 1962	9 58.9 in 1977	9 5.05 in 1972	9 0.60 in 1954
10 68.4 in 2001	10 59.0 in 1963	10 4.73 in 1971	10 0.64 in 1976
11 68.2 in 2017			
68.2 in 1957			
68.2 in 1944			
14 68.1 in 2021			

Normal Temperature for February at GIF = 63.5°

Normal Rainfall for February at GIF = 2.63 in.

Warmest Winters	Coolest Winters	Wettest Winters	Driest Winters
1 69.4 in 1948-49	1 56.6 in 1957-58	1 24.22 in 1997-98	1 1.75 in 1984-85
2 67.8 in 1949-50	2 56.9 in 1976-77	2 16.55 in 2002-03	2 1.83 in 1943-44
3 67.5 in 1971-72	3 57.7 in 1963-64	3 12.78 in 1965-66	3 2.00 in 2011-12
4 67.4 in 2016-17	4 58.0 in 2009-10	4 12.35 in 1963-64	4 2.28 in 1975-76
67.4 in 1990-91	5 58.1 in 1977-78	5 12.17 in 1957-58	5 2.79 in 1948-49
67.4 in 1988-89	6 58.6 in 1968-69	6 12.10 in 1947-48	6 3.00 in 2012-13
7 66.7 in 2019-20	7 58.7 in 2010-11	7 11.84 in 2018-19	7 3.09 in 2000-01
8 66.4 in 1956-57	8 59.1 in 1969-70	8 11.75 in 1983-84	8 3.53 in 2017-18
9 66.2 in 2018-19	9 59.6 in 1962-63	9 11.72 in 1978-79	9 3.54 in 1949-50
10 66.1 in 1974-75	10 60.6 in 1975-76	10 10.68 in 1977-78	10 3.57 in 2008-09
...
30 63.1 in 2020-21	27 63.1 in 2020-21	21 8.73 in 2020-21	56 8.73 in 2020-21

Normal Temperature for Winter (Dec/Jan/Feb) at GIF = 62.4°

Normal Rainfall for Winter (Dec/Jan/Feb) at GIF = 7.76 in.

SARASOTA-BRADENTON AREA (records began in January 1911):

Warmest Februarys	Coolest Februarys	Wettest Februarys	Driest Februarys
1 71.9 in 2018	1 54.4 in 1958	1 10.16 in 1983	1 Trace in 1911
2 71.1 in 2019	2 54.8 in 1978	2 9.29 in 1963	2 0.05 in 2001
3 70.5 in 1959	3 55.7 in 2010	3 7.34 in 1915	3 0.11 in 1950
4 69.7 in 1949	4 56.3 in 1977	4 7.13 in 1992	4 0.13 in 1989
5 69.4 in 1990	5 57.3 in 1980	5 6.65 in 1936	5 0.15 in 1932
6 69.1 in 1932	57.3 in 1912	6 6.04 in 1937	6 0.20 in 1918
7 68.4 in 1982	7 57.7 in 1968	7 5.92 in 1942	7 0.21 in 1949
8 68.3 in 1939	8 58.2 in 1942	8 5.91 in 1998	8 0.25 in 1945
9 68.2 in 2012	9 58.4 in 1969	9 5.80 in 1964	9 0.27 in 1944
68.2 in 2001	10 58.5 in 1941	10 5.73 in 1947	10 0.35 in 1976
11 68.0 in 1994	
68.0 in 1957		55 2.19 in 2021	57 2.19 in 2021
13 67.7 in 1927			
14 67.6 in 2021			
67.6 in 1997			

Normal Temperature for February at SRQ = 63.4°

Normal Rainfall for February at SRQ = 2.70 in.

Warmest Winters	Coolest Winters	Wettest Winters	Driest Winters
1 69.1 in 1931-32	1 55.8 in 1976-77	1 28.11 in 1997-98	1 0.14 in 1949-50
2 67.9 in 1949-50	2 56.9 in 1977-78	2 19.08 in 1914-15	2 1.26 in 2000-01
67.9 in 1948-49	3 57.1 in 1980-81	3 14.94 in 1935-36	3 1.35 in 1975-76
4 67.3 in 2019-20	4 57.3 in 1957-58	4 14.44 in 2002-03	4 1.69 in 1948-49
5 67.0 in 2016-17	5 57.6 in 1939-40	5 14.38 in 1977-78	5 1.88 in 1931-32
6 66.9 in 1936-37	6 58.0 in 1930-31	6 13.92 in 1913-14	6 1.90 in 2011-12
7 66.4 in 1956-57	7 58.2 in 2010-11	7 13.71 in 1992-93	7 2.00 in 1934-35
8 66.3 in 2018-19	8 58.6 in 2009-10	8 13.61 in 1963-64	8 2.14 in 1938-39
9 66.1 in 2007-08	9 59.0 in 1963-64	9 13.36 in 1982-83	9 2.86 in 1961-62
10 66.0 in 2011-12	10 59.5 in 1969-70	10 12.99 in 1957-58	10 2.88 in 1943-44
66.0 in 1990-91	59.5 in 1935-36
...	...	77 4.82 in 2020-21	32 4.82 in 2020-21
31 64.3 in 2020-21	69 64.3 in 2020-21		
64.3 in 1970-71	64.3 in 1970-71		
64.3 in 1926-27	64.3 in 1926-27		

Normal Temperature for Winter (Dec/Jan/Feb) at SRQ = 62.7°

Normal Rainfall for Winter (Dec/Jan/Feb) at SRQ = 7.72 in.

VENICE (records began in May 1955):

Warmest Februarys		Coolest Februarys		Wettest Februarys		Driest Februarys	
1	72.5 in 2018	1	54.2 in 1958	1	6.36 in 1957	1	0.00 in 2001
2	70.7 in 2019	2	55.0 in 1978	2	5.63 in 1998	2	0.10 in 1999
3	70.1 in 1959	3	57.2 in 1980	3	5.62 in 1978	3	0.15 in 1989
4	69.8 in 2012	4	58.1 in 1977	4	5.51 in 1963	4	0.29 in 1988
	69.8 in 2001	5	58.3 in 1973	5	5.47 in 1972	5	0.30 in 1997
6	69.5 in 1997	6	58.8 in 1968	6	4.92 in 2002	6	0.36 in 1962
7	68.2 in 2021	7	58.9 in 2010		4.92 in 1964	7	0.39 in 2011
	68.2 in 1994	8	59.0 in 1964	8	4.57 in 2015	8	0.41 in 1994
9	68.0 in 1989	9	59.7 in 1969	9	4.37 in 1992	9	0.60 in 2000
10	67.6 in 1956	10	60.3 in 2015	10	4.26 in 1960	10	0.71 in 1976
			60.3 in 1963	
				45	1.08 in 2021	20	1.08 in 2021

Normal Temperature for February at VNCF1 = 63.6°

Normal Rainfall for February at VNCF1 = 2.24 in.

Warmest Winters		Coolest Winters		Wettest Winters		Driest Winters	
1	68.3 in 1988-89	1	57.0 in 1976-77	1	19.42 in 1997-98	1	1.94 in 2011-12
2	68.1 in 1971-72	2	57.2 in 1957-58	2	14.71 in 1957-58	2	1.99 in 2000-01
3	67.9 in 2016-17	3	57.5 in 1977-78	3	12.68 in 2015-16	3	2.18 in 2016-17
	67.9 in 2012-13	4	59.2 in 1975-76	4	12.65 in 1977-78	4	2.21 in 1975-76
5	67.5 in 2011-12	5	59.6 in 1963-64	5	12.35 in 2018-19	5	2.61 in 1961-62
6	67.0 in 1998-99	6	59.7 in 1969-70	6	12.01 in 1972-73	6	2.70 in 1984-85
7	66.6 in 2019-20	7	60.5 in 1962-63	7	11.45 in 1963-64	7	3.19 in 2012-13
8	66.2 in 1996-97	8	60.6 in 2010-11	8	11.34 in 1965-66	8	3.25 in 1996-97
9	65.9 in 2017-18	9	60.7 in 1979-80	9	11.20 in 2009-10		3.25 in 1973-74
10	65.8 in 1956-57	10	60.9 in 2002-03	10	10.94 in 1983-84	10	3.27 in 2008-09
			60.9 in 1968-69			11	3.29 in 1981-82
...		...				12	3.69 in 1987-88
20	64.1 in 2020-21	35	64.1 in 2020-21			13	3.72 in 2020-21
	64.1 in 1973-74		64.1 in 1973-74				

Normal Temperature for Winter (Dec/Jan/Feb) at VNCF1 = 63.0°

Normal Rainfall for Winter (Dec/Jan/Feb) at VNCF1 = 7.02 in.

MYAKKA RIVER STATE PARK (Temperature records began in March 1956
and Rainfall records began in September 1943):

Warmest Februarys	Coolest Februarys	Wettest Februarys	Driest Februarys
1 72.3 in 2018	1 52.7 in 1958	1 11.28 in 1998	1 Trace in 2001
2 71.7 in 2019	2 54.9 in 1968	2 9.55 in 1983	2 0.01 in 1950
3 70.3 in 1982	3 56.7 in 1963	3 6.01 in 1963	3 0.02 in 1999
4 70.0 in 1997	4 56.9 in 2010	4 5.88 in 1981	4 0.23 in 1989
5 69.7 in 1992	5 57.0 in 1978	5 5.49 in 1978	5 0.28 in 1944
6 69.4 in 1959	6 57.9 in 1973	6 5.41 in 1957	6 0.32 in 2011
7 69.1 in 2001	7 58.6 in 1980	7 5.33 in 2015	7 0.34 in 1949
8 68.9 in 2012	8 58.9 in 1977	8 5.21 in 2002	8 0.41 in 1945
68.9 in 1994	9 60.5 in 2009	9 4.97 in 1961	9 0.44 in 1948
10 68.7 in 1990	10 60.9 in 2015	10 4.62 in 1972	10 0.49 in 1976
...	
17 66.3 in 2021		44 2.09 in 2021	34 2.09 in 2021

Normal Temperature for February at MKCF1 = 64.4°
Normal Rainfall for February at MKCF1 = 2.82 in.

Warmest Winters	Coolest Winters	Wettest Winters	Driest Winters
1 68.4 in 2016-17	1 57.2 in 1962-63	1 27.20 in 1997-98	1 0.04 in 1949-50
2 66.7 in 1971-72	2 58.2 in 1976-77	2 16.36 in 1977-78	2 1.64 in 1943-44
3 66.6 in 1998-99	3 58.5 in 1980-81	3 14.36 in 2015-16	3 1.68 in 2000-01
4 66.5 in 1992-93	4 58.9 in 1977-78	4 14.27 in 1978-79	4 1.77 in 1948-49
5 66.4 in 1991-92	5 59.4 in 2002-03	5 13.83 in 1992-93	5 2.08 in 2011-12
6 66.3 in 2012-13	6 59.6 in 2009-10	6 13.60 in 1972-73	6 2.14 in 1984-85
7 66.1 in 2018-19	7 59.7 in 2010-11	7 13.28 in 1982-83	7 2.26 in 1944-45
66.1 in 2013-14	59.7 in 1960-61	8 12.66 in 1957-58	8 2.51 in 1975-76
66.1 in 1990-91	9 61.3 in 1975-76	9 12.60 in 2018-19	9 3.51 in 1970-71
10 66.0 in 2011-12	10 61.6 in 2000-01	10 12.09 in 2003-04	10 3.71 in 2005-06
66.0 in 1974-75	11 61.8 in 1979-80		...
	61.8 in 1972-73		17 4.26 in 2020-21
	13 61.9 in 2008-09		
	61.9 in 1987-88		
	15 62.3 in 2020-21		

Normal Temperature for Winter (Dec/Jan/Feb) at MKCF1 = 63.2°
Normal Rainfall for Winter (Dec/Jan/Feb) at MKCF1 = 8.01 in.

WAUCHULA 2 N (records began in January 1933):

Warmest Februarys	Coolest Februarys	Wettest Februarys	Driest Februarys
1 71.1 in 1949	1 46.7 in 2010	1 8.92 in 1936	1 0.00 in 2001
2 70.8 in 2018	2 54.4 in 1958	2 8.82 in 1998	0.00 in 2000
3 70.7 in 1939	3 56.3 in 1978	3 7.99 in 1983	3 0.19 in 1945
4 70.1 in 1959	4 57.1 in 1947	4 7.37 in 1963	4 0.22 in 1989
5 69.8 in 1933	5 57.3 in 1968	5 6.29 in 1992	5 0.30 in 1997
6 69.5 in 1982	6 58.3 in 2015	6 6.03 in 2002	6 0.33 in 1950
7 69.4 in 1990	7 58.5 in 2007	7 5.46 in 1960	7 0.45 in 2009
8 69.3 in 1975	58.5 in 1942	8 5.34 in 1942	0.45 in 1949
9 69.1 in 2019	9 58.7 in 1980	9 5.26 in 1937	9 0.52 in 2018
10 68.9 in 1962	10 58.9 in 1964	10 5.24 in 1952	10 0.58 in 1962
...
19 66.7 in 2021	66 66.7 in 2021	40 2.37 in 2021	47 2.37 in 2021
		2.37 in 1980	2.37 in 1980

Normal Temperature for February at WAUF1 = 63.9°

Normal Rainfall for February at WAUF1 = 2.71 in.

Warmest Winters	Coolest Winters	Wettest Winters	Driest Winters
1 68.8 in 1948-49	1 49.6 in 2009-10	1 21.20 in 1997-98	1 0.72 in 1949-50
2 68.5 in 1936-37	2 56.5 in 2010-11	2 16.61 in 1935-36	2 1.45 in 2000-01
3 67.4 in 1971-72	3 58.0 in 1977-78	3 14.21 in 1965-66	3 1.90 in 2011-12
4 67.3 in 2007-08	4 58.1 in 1980-81	4 14.16 in 1957-58	4 2.00 in 1948-49
5 66.4 in 1974-75	5 58.4 in 2002-03	5 13.26 in 1982-83	5 2.11 in 1938-39
6 66.2 in 1990-91	6 58.6 in 1969-70	6 12.58 in 1972-73	6 2.13 in 1934-35
7 66.0 in 2016-17	7 58.7 in 1976-77	7 12.15 in 1978-79	7 2.33 in 1975-76
8 65.9 in 1988-89	58.7 in 1939-40	8 11.65 in 2009-10	8 2.34 in 1984-85
9 65.8 in 1956-57	9 58.8 in 2003-04	9 11.53 in 2018-19	9 2.40 in 1999-00
10 65.7 in 1961-62	10 59.0 in 1963-64	10 11.48 in 2015-16	10 2.42 in 1943-44
...
54 61.7 in 2020-21	20 61.7 in 2020-21	63 4.09 in 2020-21	22 4.09 in 2020-21
61.7 in 1955-56	61.7 in 1955-56		

Normal Temperature for Winter (Dec/Jan/Feb) at WAUF1 = 63.0°

Normal Rainfall for Winter (Dec/Jan/Feb) at WAUF1 = 6.90 in.

ARCADIA (records began in November 1899):

Warmest Februarys		Coolest Februarys		Wettest Februarys		Driest Februarys	
1	71.2 in 1949	1	54.5 in 2010	1	10.13 in 1983	1	0.00 in 2001
2	71.0 in 2018	2	55.3 in 1958	2	9.71 in 1936		0.00 in 1916
3	70.4 in 1939	3	56.0 in 1978	3	7.08 in 1937	3	0.01 in 1999
4	70.3 in 1959	4	57.1 in 1968	4	6.86 in 1924	4	0.05 in 1918
5	70.1 in 1982	5	57.8 in 1947	5	5.92 in 1982	5	0.10 in 2011
	70.1 in 1932	6	58.0 in 1980	6	5.80 in 1963		0.10 in 1911
7	69.9 in 2019	7	58.8 in 1942	7	5.73 in 1998	7	0.15 in 1950
8	69.2 in 1933		58.8 in 1902	8	5.66 in 1902	8	0.24 in 1949
9	69.1 in 1975	9	59.1 in 2015	9	5.54 in 1903	9	0.26 in 1956
10	68.7 in 1997		59.1 in 2007	10	4.92 in 1960	10	0.43 in 1945
	68.7 in 1929		59.1 in 1973	
			59.1 in 1970	64	1.75 in 2021	53	1.75 in 2021
			59.1 in 1912				
...		...					
21	67.6 in 2021	91	67.6 in 2021				

Normal Temperature for February at ARCF1 = 62.7°

Normal Rainfall for February at ARCF1 = 2.56 in.

Warmest Winters		Coolest Winters		Wettest Winters		Driest Winters	
1	69.5 in 1931-32	1	57.1 in 1980-81	1	16.85 in 1997-98	1	0.27 in 1949-50
2	68.9 in 1948-49	2	57.2 in 2010-11	2	15.63 in 1935-36	2	0.97 in 1948-49
3	68.6 in 1912-13	3	57.5 in 2009-10	3	14.10 in 1982-83		0.97 in 1910-11
4	67.8 in 1936-37	4	57.7 in 1957-58	4	13.42 in 1977-78	4	1.17 in 2000-01
5	66.8 in 1971-72	5	57.8 in 1977-78	5	13.03 in 1905-06	5	1.62 in 2011-12
	66.8 in 1932-33	6	58.5 in 1976-77	6	12.98 in 1978-79	6	2.06 in 1984-85
7	66.7 in 1949-50		58.5 in 1969-70	7	12.78 in 2015-16		2.06 in 1932-33
8	66.6 in 1956-57	8	58.6 in 1939-40	8	12.45 in 1902-03	8	2.15 in 1926-27
9	66.3 in 2016-17	9	59.3 in 1930-31	9	12.14 in 1914-15	9	2.19 in 1975-76
10	66.1 in 1974-75	10	59.5 in 2002-03	10	12.11 in 1941-42	10	2.20 in 2008-09
			59.5 in 1901-02	
				67	4.72 in 2020-21	49	4.72 in 2020-21
...		...					
55	62.6 in 2020-21	43	62.6 in 2020-21				
	62.6 in 1920-21		62.6 in 1920-21				

Normal Temperature for Winter (Dec/Jan/Feb) at ARCF1 = 61.7°

Normal Rainfall for Winter (Dec/Jan/Feb) at ARCF1 = 6.33 in.

ARCHBOLD BIO STATION (records began in January 1969):

Warmest Februarys	Coolest Februarys	Wettest Februarys	Driest Februarys
1 71.3 in 2018	1 55.2 in 1978	1 10.85 in 1983	1 0.00 in 2001
2 69.8 in 2019	2 55.4 in 2010	2 8.28 in 1998	2 0.22 in 2011
3 69.3 in 2001	3 56.8 in 1980	3 5.00 in 2004	3 0.27 in 1999
4 68.9 in 1990	4 57.8 in 1969	4 4.73 in 1992	4 0.33 in 1989
68.9 in 1982	5 58.1 in 1973	5 4.32 in 2020	5 0.37 in 2000
6 68.6 in 1975	6 58.2 in 1970	6 3.86 in 2002	6 0.38 in 2009
7 68.2 in 2021	7 59.2 in 1988	7 3.57 in 1970	7 0.49 in 1975
8 68.1 in 1997	8 59.3 in 2009	8 3.51 in 2016	8 0.53 in 1977
9 67.3 in 2012	9 59.8 in 2006	9 3.46 in 1981	9 0.54 in 2018
10 67.2 in 2017	59.8 in 1977	10 3.31 in 2006	10 0.73 in 2003
67.2 in 1994	
		18 2.40 in 2021	36 2.40 in 2021

Normal Temperature for February at ACHF1 = 62.6°

Normal Rainfall for February at ACHF1 = 2.55 in.

Warmest Winters	Coolest Winters	Wettest Winters	Driest Winters
1 67.4 in 2016-17	1 57.0 in 1980-81	1 21.53 in 1997-98	1 0.64 in 2000-01
2 66.2 in 1971-72	2 57.4 in 1969-70	2 16.19 in 2015-16	2 1.44 in 1975-76
3 65.9 in 2019-20	3 58.1 in 1976-77	3 15.77 in 1982-83	3 1.77 in 1984-85
4 65.7 in 1974-75	4 58.2 in 1977-78	4 13.16 in 1978-79	4 2.04 in 2016-17
5 65.4 in 1990-91	5 58.5 in 2010-11	5 11.18 in 1969-70	5 2.43 in 2011-12
6 65.1 in 2015-16	6 58.6 in 2009-10	6 10.16 in 2003-04	6 2.64 in 2008-09
7 65.0 in 2017-18	7 60.0 in 2002-03	7 9.94 in 1972-73	7 2.68 in 1970-71
65.0 in 2007-08	60.0 in 1995-96	8 9.71 in 1994-95	8 3.44 in 1981-82
9 64.8 in 2018-19	9 60.2 in 1979-80	9 9.12 in 2018-19	9 3.48 in 2017-18
64.8 in 2012-13	10 60.4 in 2003-04	10 9.09 in 1977-78	10 3.50 in 1998-99
	60.4 in 1987-88
...	...	25 5.64 in 2020-21	28 5.64 in 2020-21
23 62.8 in 2020-21	28 62.8 in 2020-21		
62.8 in 2014-15	28 62.8 in 2014-15		
62.8 in 1993-94	28 62.8 in 1993-94		

Normal Temperature for Winter (Dec/Jan/Feb) at ACHF1 = 61.7°

Normal Rainfall for Winter (Dec/Jan/Feb) at ACHF1 = 6.39 in.

PUNTA GORDA AREA (Temperature records began in July 1914
and Rainfall records began in May 1914):

Warmest Februarys	Coolest Februarys	Wettest Februarys	Driest Februarys
1 74.4 in 1949	1 57.3 in 1958	1 12.11 in 1936	1 0.00 in 1950
2 73.2 in 2018	2 57.5 in 2010	2 11.05 in 1983	2 0.01 in 2001
3 71.2 in 1959	57.5 in 1978	3 5.68 in 1963	3 0.04 in 1938
71.2 in 1932	4 58.6 in 1968	4 5.61 in 1982	0.04 in 1932
5 70.8 in 2019	5 58.9 in 1980	5 5.59 in 1937	5 0.09 in 1929
6 70.7 in 1918	6 59.3 in 1942	6 5.26 in 1998	6 0.13 in 1999
7 70.6 in 1982	7 59.5 in 1969	7 4.88 in 1924	7 0.18 in 1974
70.6 in 1962	8 59.8 in 1973	8 4.62 in 1964	8 0.25 in 1918
9 70.3 in 1957	9 60.1 in 1920	9 4.50 in 1952	9 0.26 in 1945
10 70.2 in 1939	10 60.2 in 1970	10 4.41 in 1940	10 0.27 in 1949
70.2 in 1933	60.2 in 1947		0.27 in 1926
12 70.0 in 1997	
70.0 in 1990		80 0.74 in 2021	23 0.74 in 2021
14 69.7 in 1994		0.74 in 1939	0.74 in 1939
15 69.6 in 2021			
69.6 in 1948			

Normal Temperature for February at PGD = 64.7°

Normal Rainfall for February at PGD = 2.48 in.

Warmest Winters	Coolest Winters	Wettest Winters	Driest Winters
1 72.0 in 1948-49	1 59.1 in 1977-78	1 16.32 in 1935-36	1 0.58 in 1949-50
2 70.7 in 1931-32	2 59.3 in 1976-77	2 15.66 in 2015-16	2 0.62 in 2000-01
3 70.2 in 1949-50	59.3 in 1969-70	3 15.45 in 1997-98	3 1.24 in 1938-39
4 69.2 in 1932-33	4 59.7 in 2010-11	4 15.16 in 1982-83	4 1.55 in 1948-49
5 68.5 in 1956-57	5 59.9 in 1957-58	5 12.66 in 1925-26	5 1.67 in 2011-12
6 68.3 in 1961-62	6 60.0 in 1980-81	6 12.65 in 1940-41	6 1.87 in 1927-28
7 68.0 in 1971-72	60.0 in 1963-64	7 11.76 in 1977-78	7 2.08 in 1973-74
8 67.9 in 1936-37	8 60.5 in 1939-40	8 11.71 in 1930-31	8 2.13 in 1932-33
9 67.4 in 2016-17	9 60.6 in 1975-76	9 11.51 in 1978-79	9 2.20 in 1961-62
67.4 in 1946-47	60.6 in 1968-69	10 11.42 in 1958-59	10 2.26 in 2016-17
...
46 65.0 in 2020-21	48 65.0 in 2020-21	68 3.99 in 2020-21	34 3.99 in 2020-21

Normal Temperature for Winter (Dec/Jan/Feb) at PGD = 63.9°

Normal Rainfall for Winter (Dec/Jan/Feb) at PGD = 6.26 in.

FORT MYERS AREA (records began in January 1902):

Warmest Februarys	Coolest Februarys	Wettest Februarys	Driest Februarys
1 74.9 in 2018	1 55.5 in 1958	1 10.82 in 1983	1 Trace in 2001
2 72.9 in 2019	2 57.2 in 1978	2 7.12 in 1998	Trace in 1944
3 72.3 in 1997	3 58.8 in 1947	3 6.79 in 1902	Trace in 1911
4 72.2 in 1982	4 59.2 in 1902	4 5.93 in 1934	4 0.06 in 1948
5 71.8 in 1949	5 59.4 in 2010	5 5.50 in 1936	5 0.07 in 1949
6 71.4 in 2017	59.4 in 1942	6 5.13 in 1913	6 0.08 in 1950
71.4 in 2001	7 59.9 in 1968	7 4.65 in 1963	0.08 in 1929
8 71.3 in 1990	8 60.0 in 1912	8 4.34 in 1952	8 0.10 in 1905
9 71.2 in 2012	9 60.1 in 1970	9 4.00 in 1940	9 0.11 in 2000
10 71.1 in 1959	10 60.4 in 1941	10 3.89 in 1992	0.11 in 1943
11 70.9 in 1994	
12 70.8 in 2021		30 2.98 in 2021	91 2.98 in 2021
70.8 in 2008			
70.8 in 1939			

Normal Temperature for February at FMY = 66.6°

Normal Rainfall for February at FMY = 2.15 in.

Warmest Winters	Coolest Winters	Wettest Winters	Driest Winters
1 70.9 in 2016-17	1 58.2 in 1957-58	1 18.71 in 2015-16	1 0.45 in 2000-01
2 70.7 in 1931-32	2 59.7 in 1969-70	2 15.59 in 1982-83	2 0.71 in 1948-49
3 70.1 in 1948-49	3 59.8 in 1976-77	3 15.19 in 1997-98	3 0.80 in 1910-11
4 69.8 in 1971-72	4 60.0 in 1977-78	4 13.74 in 1978-79	4 1.14 in 1984-85
5 69.6 in 2019-20	5 61.3 in 1980-81	5 12.26 in 1940-41	5 1.21 in 1926-27
6 69.4 in 1990-91	61.3 in 1939-40	6 12.02 in 1925-26	6 1.42 in 1974-75
7 69.1 in 1936-37	7 61.5 in 1963-64	7 11.51 in 2003-04	7 1.43 in 1904-05
8 69.0 in 2007-08	61.5 in 1950-51	8 11.06 in 1902-03	8 1.47 in 1928-29
9 68.8 in 1996-97	61.5 in 1903-04	9 10.85 in 1957-58	9 1.50 in 1961-62
10 68.7 in 2017-18	10 61.6 in 1930-31	10 10.51 in 1969-70	10 1.53 in 1938-39
68.7 in 2012-13	
68.7 in 2011-12		77 5.83 in 2020-21	43 5.83 in 2020-21
...	...		
34 66.7 in 2020-21	85 66.7 in 2020-21		

Normal Temperature for Winter (Dec/Jan/Feb) at FMY = 65.7°

Normal Rainfall for Winter (Dec/Jan/Feb) at FMY = 5.80 in.

For more local climate information, please visit our web page at <https://www.weather.gov/tampabay> and look within the "Climate and Past Weather" drop down menu above the map of the area.