



NOAA - National Weather Service

Tampa Bay Area

2525 14th Avenue SE, Ruskin, Florida 33570

813-645-2323 <https://weather.gov/tampabay>

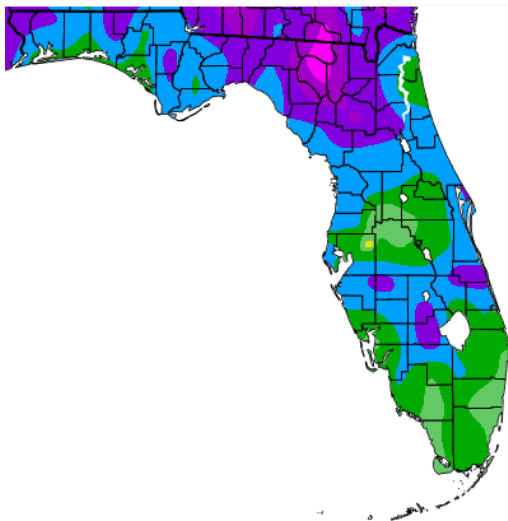
July 2019 Climate Summary for West Central and Southwest Florida

Temperatures across West Central and Southwest Florida ranged from near average to over 3 degrees above average for July 2019 and this placed a few locations in the Top Ten Warmest for July.

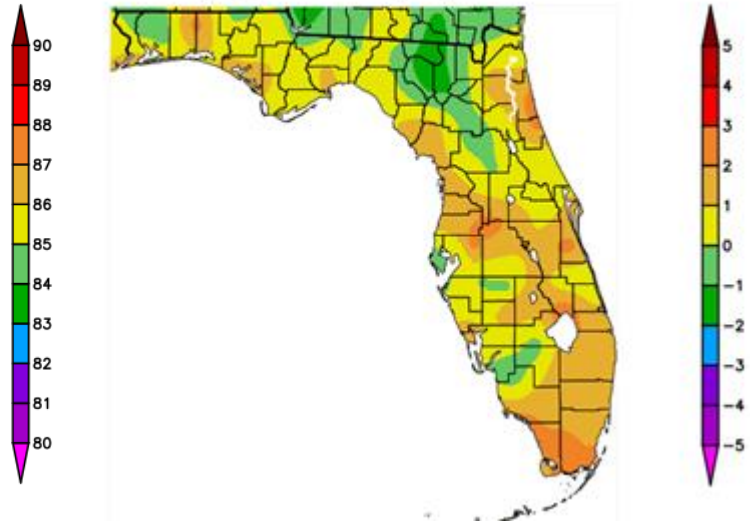
JULY TEMPERATURE (deg F - Top Ten Warmest):

Location	July 2019 Rank	July 2019 Avg Temp	Normal July Temp	Dep fm Normal	Record Warmest	Records Began
Plant City	2nd	85.0	81.7	+3.3	85.2/2016	Sep 1892
Winter Haven Area	3rd(tie)	84.8	82.9	+1.9	85.5/2016	Mar 1941
Archbold Bio Stn	8th	82.1	80.6	+1.5	83.5/2016	Jan 1969
Inverness 3 SE	9th(tie)	82.8	81.5	+1.3	84.6/2016	Jul 1948
Lakeland Area	10th(tie)	83.7	82.0	+1.7	85.1/2016	Jan 1915

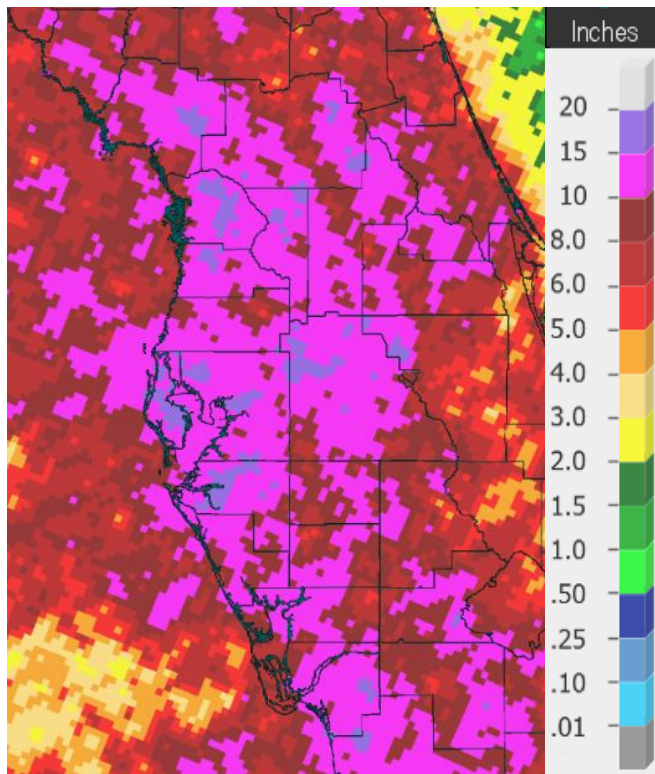
Temperature (F)
7/1/2019 - 7/31/2019



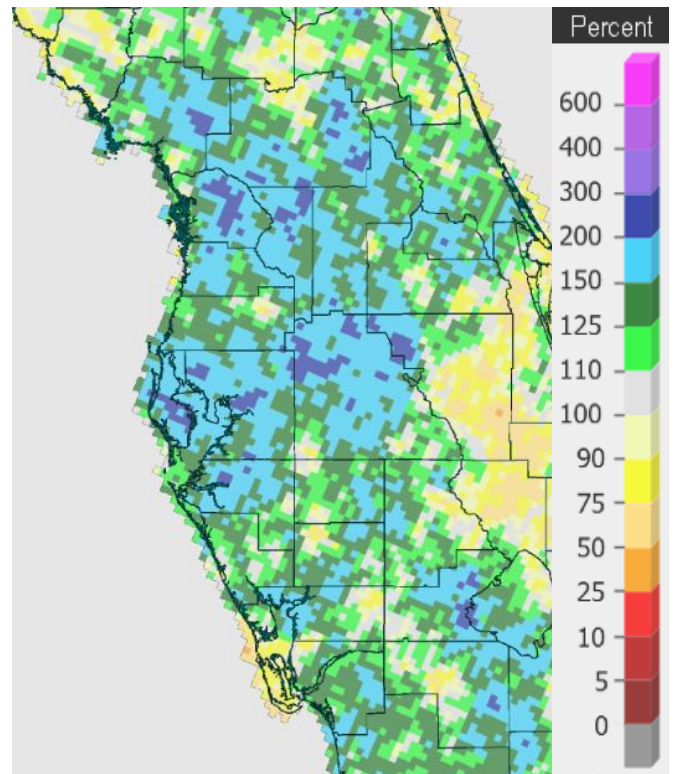
Departure from Normal Temperature (F)
7/1/2019 - 7/31/2019



As for rainfall, it was highly variable across the region with many areas seeing well above normal rainfall (blue/green areas on right image below), which placed a few sites in the Top Ten Wettest. Meanwhile, some other locations were well below normal (yellow/orange areas on right image below).



July 2019 Rainfall



July 2019 Percent of Normal

JULY RAINFALL (inches - Top Ten Wettest):

Location	July 2019 Rank	July 2019 Rainfall	Normal July Rain	Dep fm Normal	Record Wettest	Records Began
Punta Gorda Area	5th	13.66	7.89	+5.77	18.25/1947	Jun 1914
Sarasota-Bradenton Area	7th	13.92	7.98	+5.94	20.60/1921	Jan 1911
Winter Haven Area	8th	11.91	7.50	+4.41	16.45/1945	Mar 1941
St. Petersburg Area	10th	13.48	7.34	+6.14	18.97/1945	Aug 1914
Chiefland 5 ESE	10th	12.44	8.24	+4.20	20.80/2001	Jul 1956

On the following pages are tables of the Top Ten Warmest, Coolest, Wettest, and Driest Julys at some official NWS locations, which include the average/total for this July where available, and the 1981-2010 Normal (average) temperature and rainfall for the month of July.

Chiefland 5 ESE (Records Began July 1956) :

Warmest Julys	Coolest Julys	Wettest Julys	Driest Julys
1 83.8 in 2016	1 76.5 in 1967	1 20.80 in 2001	1 2.89 in 2007
2 83.1 in 1983	2 79.0 in 1964	2 19.40 in 1964	2 3.38 in 1972
3 83.0 in 1998	3 79.2 in 1975	3 16.78 in 2018	3 3.75 in 2006
83.0 in 1987	4 79.3 in 1974	4 16.72 in 2013	4 4.06 in 1977
5 82.8 in 2015	5 79.4 in 1994	5 16.11 in 1978	5 4.23 in 2014
6 82.6 in 2017	6 79.5 in 2009	6 13.43 in 1975	6 4.31 in 1956
82.6 in 1999	79.5 in 1965	7 13.49 in 1980	7 4.33 in 2008
8 82.2 in 1993	8 79.6 in 1984	8 13.00 in 2017	8 4.55 in 1995
82.2 in 1981	79.6 in 1969	9 12.53 in 1974	9 5.38 in 1983
10 82.1 in 2005	79.6 in 1956	10 12.44 in 2019	10 5.43 in 2016
...			
18 81.5 in 2019			
in 1976			

Normal Temperature for July at CHIF1 = 80.3°
 Normal Rainfall for July at CHIF1 = 8.24 in.

Inverness 3 SE (Records Began July 1948) :

Warmest Julys	Coolest Julys	Wettest Julys	Driest Julys
1 84.6 in 2016	1 78.2 in 1994	1 16.28 in 1948	1 2.61 in 1952
2 84.0 in 2010	2 79.9 in 2018	2 14.71 in 1964	2 3.15 in 2016
3 83.8 in 1969	3 80.0 in 2004	3 14.45 in 2013	3 3.71 in 1972
4 83.5 in 1979	80.0 in 1984	4 14.40 in 1960	4 3.91 in 1992
5 83.2 in 1998	5 80.1 in 1995	5 13.17 in 2018	5 4.22 in 2011
83.2 in 1981	6 80.2 in 2003	6 13.06 in 2002	6 4.24 in 2006
7 83.1 in 1953	7 80.3 in 1986	7 12.82 in 1965	7 4.27 in 1983
8 82.9 in 1952	8 80.5 in 2000	8 12.79 in 2007	8 4.49 in 1994
9 82.8 in 2019	80.5 in 1988	9 11.45 in 1953	9 4.56 in 1970
82.8 in 2011	10 80.6 in 2017	10 11.37 in 2015	10 4.72 in 1996
	80.6 in 2001	11 11.27 in 2019	
	80.6 in 1948		

Normal Temperature for July at INV1 = 81.5°
 Normal Rainfall for July at INV1 = 7.39 in.

Bushnell 1 E (Records Began July 1948):

Warmest Julys	Coollest Julys	Wettest Julys	Driest Julys
1 83.4 in 1992	1 79.4 in 1974	1 15.07 in 1948	1 1.65 in 2008
2 83.1 in 1998	2 79.5 in 1965	2 13.95 in 1960	2 2.21 in 1992
3 82.8 in 2016	3 79.6 in 2013	3 13.87 in 1959	3 3.29 in 1976
4 82.4 in 1995	79.6 in 1967	4 13.13 in 2001	4 3.30 in 1989
82.4 in 1993	5 79.7 in 1984	5 12.85 in 1967	5 3.60 in 1979
82.4 in 1979	6 79.8 in 2008	6 12.49 in 1965	6 3.71 in 1996
7 82.3 in 1960	7 80.0 in 1964	7 11.92 in 1991	7 3.81 in 1970
8 82.0 in 1981	8 80.1 in 1983	8 11.77 in 2019	8 3.88 in 1973
82.0 in 1969	9 80.2 in 2014	9 11.63 in 2015	9 3.89 in 1972
82.0 in 1962	80.2 in 1988	10 11.30 in 1984	10 4.12 in 2004
	80.2 in 1955		
...	...		
36 80.6 in 2019	20 80.6 in 2019		
in 1976	in 1976		
in 1971	in 1971		

Normal Temperature for July at BSHF1 = 81.4°
Normal Rainfall for July at BSHF1 = 6.43 in.

Brooksville Area (Records Began January 1892):

Warmest Julys	Coollest Julys	Wettest Julys	Driest Julys
1 83.6 in 1930	1 78.5 in 1921	1 20.60 in 1906	1 1.96 in 1930
83.6 in 1927	2 78.7 in 1947	2 19.89 in 1909	2 2.04 in 1970
3 83.5 in 1931	3 79.0 in 1894	3 17.22 in 2015	3 2.06 in 1996
4 83.3 in 1942	4 79.1 in 1950	4 17.03 in 1943	4 2.83 in 1892
5 83.2 in 1979	5 79.2 in 1898	5 16.90 in 1924	5 3.53 in 1902
6 83.1 in 1928	6 79.3 in 1974	6 16.33 in 1964	6 4.13 in 1989
7 83.0 in 2016	79.3 in 1904	7 15.72 in 1960	7 4.35 in 1968
8 82.9 in 1981	8 79.5 in 1922	8 15.37 in 2008	8 4.46 in 2010
82.9 in 1926	9 79.6 in 1984	9 15.36 in 1945	9 4.65 in 1931
10 82.7 in 2011	79.6 in 1920	10 14.81 in 1935	10 4.66 in 1955
82.7 in 1993		...	
...		15 12.90 in 2019	
17 82.2 in 2019			
in 2010			

Normal Temperature for July at BKV = 80.7°
Normal Rainfall for July at BKV = 8.04 in.

St. Leo (Records Began April 1895):

Warmest Julys	Coollest Julys	Wettest Julys	Driest Julys
1 84.3 in 2005	1 78.1 in 1921	1 18.52 in 1945	1 2.09 in 1979
84.3 in 1998	2 78.3 in 1935	2 16.10 in 1948	2 2.30 in 1899
3 83.9 in 1942	3 78.7 in 1918	3 15.74 in 1935	3 2.58 in 1930
4 83.8 in 1896	4 78.8 in 1922	4 15.05 in 1933	4 2.98 in 2010
5 83.7 in 1900	78.8 in 1919	5 14.34 in 1960	5 3.08 in 1989
6 83.5 in 1983	6 78.9 in 1923	6 14.17 in 1909	6 3.34 in 1902
83.5 in 1932	7 79.3 in 1920	7 14.11 in 2004	7 3.91 in 1952
8 83.4 in 2006	79.3 in 1904	8 13.66 in 1906	8 4.28 in 1999
83.4 in 1999	9 79.5 in 1947	9 13.35 in 1901	9 4.31 in 1942
83.4 in 1987	79.5 in 1929	10 12.53 in 2018	10 4.42 in 2016
83.4 in 1981	
		70 7.73 in 2019	56 7.73 in 2019

Average Temperature for July 2019 = Several Days Missing

Normal Temperature for July at STLf1 = 82.6°

Normal Rainfall for July at STLf1 = 7.88 in.

Tarpon Springs (Records Began January 1892):

Warmest Julys	Coollest Julys	Wettest Julys	Driest Julys
1 85.2 in 1932	1 79.1 in 1904	1 22.55 in 2015	1 0.95 in 2003
2 85.0 in 1993	2 79.5 in 1900	2 20.76 in 1960	2 0.98 in 2007
3 84.8 in 1942	79.5 in 1895	3 17.03 in 1909	3 2.23 in 1970
4 84.7 in 2016	4 79.6 in 1899	4 15.48 in 1947	4 2.43 in 1932
84.7 in 1997	5 79.7 in 1908	5 15.46 in 1899	5 2.45 in 1976
6 84.6 in 2004	6 79.8 in 1974	6 15.45 in 2009	6 2.47 in 1993
7 84.3 in 1996	79.8 in 1910	7 15.31 in 2012	7 2.76 in 1914
84.3 in 1931	79.8 in 1896	8 15.12 in 2008	8 3.41 in 1940
9 84.2 in 2014	79.8 in 1894	9 15.02 in 1919	9 3.48 in 1952
10 84.1 in 1998	10 79.9 in 1939	10 14.66 in 1921	10 3.67 in 1972
...		...	
18 83.4 in 2019		25 11.67 in 2019	102 11.67 in 2019

Normal Temperature for July at TRPF1 = 82.0°

Normal Rainfall for July at TRPF1 = 8.09 in.

Tampa Area (Records Began April 1890):

Warmest Julys	Coollest Julys	Wettest Julys	Driest Julys
1 84.9 in 2016	1 79.7 in 1899	1 20.59 in 1960	1 1.65 in 1981
84.9 in 1932	2 80.2 in 1968	2 15.53 in 1899	2 2.03 in 1932
3 84.6 in 1942	80.2 in 1890	3 13.92 in 1906	3 2.11 in 1893
4 84.4 in 2011	4 80.3 in 1965	4 13.77 in 1950	4 2.31 in 1962
5 84.3 in 2010	80.3 in 1955	5 13.68 in 1946	5 2.72 in 1996
6 84.2 in 2017	80.3 in 1947	6 13.32 in 1925	6 2.75 in 1908
84.2 in 2005	80.3 in 1910	7 12.95 in 1998	7 2.77 in 1970
8 84.1 in 2018	8 80.4 in 1906	8 12.68 in 2014	8 2.80 in 1992
9 84.0 in 1980	9 80.5 in 1909	9 12.32 in 1933	9 2.92 in 1993
84.0 in 1931	80.5 in 1904	10 12.30 in 1896	10 3.38 in 2005
...		...	
24 83.1 in 2019		21 11.01 in 2019	
in 1987			
in 1975			
in 1969			
in 1958			
in 1940			

Normal Temperature for July at TPA = 83.0°
Normal Rainfall for July at TPA = 7.07 in.

St Petersburg (Records Began August 1914):

Warmest Julys	Coollest Julys	Wettest Julys	Driest Julys
1 86.7 in 2005	1 80.7 in 1947	1 18.97 in 1945	1 2.09 in 1996
2 85.7 in 1932	2 80.8 in 1921	2 18.30 in 1921	2 2.40 in 1982
3 85.5 in 2017	3 81.0 in 1974	3 16.77 in 1947	3 2.44 in 1918
85.5 in 2016	81.0 in 1968	4 16.46 in 1960	4 2.65 in 1970
5 85.3 in 1931	5 81.2 in 1919	5 14.97 in 1919	5 2.72 in 1930
6 85.2 in 2010	6 81.3 in 1954	6 14.70 in 2000	6 2.78 in 1972
7 84.9 in 1979	7 81.4 in 1938	7 14.66 in 1922	7 2.92 in 2012
8 84.8 in 1987	8 81.5 in 1965	8 14.32 in 2015	8 3.05 in 1942
9 84.7 in 1992	9 81.6 in 1956	9 13.64 in 1954	9 3.06 in 2003
84.7 in 1973	81.6 in 1922	10 13.48 in 2019	10 3.13 in 1966
...			
34 83.7 in 2019			
in 2012			
in 2009			
in 2003			
in 1961			
in 1936			

Normal Temperature for July at SPG = 83.9°
Normal Rainfall for July at SPG = 7.34 in.

Plant City (Records Began February 1893):

Warmest Julys	Coollest Julys	Wettest Julys	Driest Julys
1 85.2 in 2016	1 78.3 in 1907	1 21.74 in 1960	1 2.75 in 1970
2 85.0 in 2019	2 79.0 in 1929	2 15.67 in 1943	2 2.96 in 1996
3 84.8 in 2017	3 79.2 in 1925	3 15.62 in 1910	3 3.04 in 1932
4 84.6 in 2018	4 79.4 in 1935	4 15.22 in 1925	4 3.45 in 1915
5 83.6 in 1969	5 79.5 in 1947	5 15.20 in 1933	5 3.48 in 1956
6 83.5 in 2010	6 79.8 in 1933	6 14.24 in 2017	6 3.54 in 1902
7 83.3 in 1916	7 79.9 in 1926	7 14.19 in 1929	7 3.82 in 1988
8 83.2 in 2005	8 80.0 in 1938	8 14.08 in 1945	8 3.92 in 1913
83.2 in 1981	80.0 in 1906	14.08 in 1905	9 3.97 in 1912
83.2 in 1913	10 80.2 in 1930	10 13.25 in 1965	10 4.32 in 1958
	80.2 in 1910
		30 10.36 in 2019	90 10.36 in 2019
		in 1899	in 1899

Normal Temperature for July at PLCF1 = 81.7°

Normal Rainfall for July at PLCF1 = 7.60 in.

Lakeland (Records Began January 1915):

Warmest Julys	Coollest Julys	Wettest Julys	Driest Julys
1 85.1 in 2016	1 79.4 in 1921	1 20.07 in 2017	1 2.49 in 1992
2 84.9 in 1992	79.4 in 1919	2 15.67 in 1960	2 3.09 in 1961
3 84.8 in 1987	3 79.6 in 1947	3 14.74 in 1994	3 3.17 in 1942
4 84.5 in 2010	79.6 in 1923	4 14.34 in 1948	4 3.50 in 1996
5 84.4 in 1993	5 80.0 in 1974	5 13.79 in 1946	5 3.51 in 1972
84.4 in 1932	6 80.3 in 1975	6 13.77 in 1988	6 4.06 in 1983
7 84.2 in 1942	80.3 in 1950	7 13.56 in 2001	7 4.14 in 1936
8 84.0 in 1995	8 80.5 in 2007	8 13.37 in 2015	8 4.30 in 1930
9 83.9 in 1989	9 80.6 in 1965	9 13.31 in 2018	9 4.37 in 1932
10 83.7 in 2019	10 80.8 in 1955	10 13.23 in 1991	10 4.49 in 1958
83.7 in 1981	80.8 in 1954
	80.8 in 1945	21 10.31 in 2019	85 10.31 in 2019
	80.8 in 1920		
	80.8 in 1918		

Normal Temperature for July at LLDF1 = 82.0°

Normal Rainfall for July at LLDF1 = 7.49 in.

Winter Haven Area (Records Began March 1941) :

Warmest Julys	Coollest Julys	Wettest Julys	Driest Julys
1 85.5 in 2016	1 79.7 in 1968	1 16.45 in 1945	1 1.43 in 1999
2 85.0 in 2005	2 79.9 in 1947	2 13.73 in 1948	2 1.95 in 1972
3 84.8 in 2019	3 80.0 in 1974	3 13.69 in 1946	3 2.72 in 1986
84.8 in 2010	4 80.1 in 1972	4 13.14 in 2018	4 2.95 in 2011
84.8 in 1989	80.1 in 1971	5 12.73 in 1991	5 3.36 in 1996
6 84.2 in 1998	6 80.6 in 1975	6 12.07 in 1973	6 3.40 in 2009
7 84.1 in 1992	7 80.7 in 1976	7 12.05 in 1981	7 3.44 in 1961
8 84.0 in 2017	8 80.8 in 1965	8 11.91 in 2019	8 3.69 in 1988
9 83.9 in 1999	80.8 in 1963	9 11.82 in 1995	9 3.76 in 2012
10 83.8 in 2012	10 81.0 in 1950	10 11.68 in 1941	10 4.06 in 1975

Normal Temperature for July at GIF = 82.9°

Normal Rainfall for July at GIF = 7.50 in.

Bartow (Records Began January 1892) :

Warmest Julys	Coollest Julys	Wettest Julys	Driest Julys
1 85.4 in 2014	1 79.3 in 2006	1 17.58 in 1960	1 2.35 in 1892
2 84.7 in 1932	2 79.4 in 1947	2 16.91 in 1924	2 2.91 in 1961
3 84.5 in 1969	3 79.7 in 1935	3 14.55 in 1897	3 3.16 in 1910
4 84.2 in 2016	79.7 in 1894	4 14.00 in 1991	4 3.19 in 1972
5 84.1 in 2013	5 79.8 in 1938	5 13.84 in 1998	5 3.55 in 1932
84.1 in 1998	6 80.0 in 1974	6 13.82 in 1989	6 3.80 in 1999
7 84.0 in 2012	7 80.2 in 1918	7 13.36 in 1945	7 3.97 in 1902
8 83.9 in 1992	80.2 in 1896	8 13.32 in 1995	8 4.08 in 1958
83.9 in 1987	9 80.4 in 1975	9 13.31 in 1909	9 4.11 in 1936
10 83.8 in 2010	10 80.5 in 1936	10 13.01 in 1933	10 4.15 in 1985
...		...	
27 82.9 in 2019		20 11.29 in 2019	
in 2003			
in 2002			
in 2000			
in 1949			

Normal Temperature for July at BARF1 = 82.8°

Normal Rainfall for July at BARF1 = 9.15 in.

Sarasota-Bradenton Area (Records Began January 1911):

Warmest Julys	Coollest Julys	Wettest Julys	Driest Julys
1 85.4 in 2016	1 78.4 in 1947	1 20.60 in 1921	1 0.93 in 1970
2 84.2 in 1998	2 79.4 in 1911	2 20.15 in 1960	2 1.80 in 1917
3 84.0 in 1962	3 79.5 in 1929	3 17.20 in 1965	3 2.15 in 2014
4 83.9 in 2014	4 79.7 in 1976	4 16.28 in 1984	4 2.30 in 1930
5 83.4 in 2006	5 79.9 in 1974	5 14.25 in 1987	5 2.88 in 1953
6 83.3 in 2010	6 80.0 in 1937	6 14.02 in 1919	6 3.51 in 1981
83.3 in 2005	7 80.1 in 1921	7 13.92 in 2019	7 3.58 in 1976
8 83.2 in 1992	8 80.2 in 1913	8 13.87 in 1978	8 3.66 in 1973
9 83.1 in 1993	9 80.3 in 1971	9 13.57 in 1935	9 3.70 in 1996
83.1 in 1989	80.3 in 1955	10 12.95 in 2001	10 3.75 in 1967

...
21 82.6 in 2019
in 1999
in 1997
in 1996
in 1942

Normal Temperature for July at SRQ = 82.4°
Normal Rainfall for July at SRQ = 7.98 in.

**Myakka River State Park (Temperature Records Began March 1956/
Rainfall Records Began September 1943):**

Warmest Julys	Coollest Julys	Wettest Julys	Driest Julys
1 85.0 in 1998	1 80.2 in 1985	1 19.34 in 1973	1 1.81 in 1972
2 84.2 in 2016	80.2 in 1965	2 18.17 in 2015	2 3.35 in 1963
3 84.1 in 2005	3 80.3 in 1974	3 17.73 in 1975	3 3.47 in 1992
4 84.0 in 2017	4 80.4 in 1959	4 17.08 in 1995	4 3.55 in 1962
5 83.9 in 1999	5 80.5 in 1984	5 15.47 in 1984	5 3.84 in 1952
6 83.8 in 1996	6 80.6 in 1962	6 14.86 in 1960	6 3.88 in 1993
7 83.6 in 1997	7 80.7 in 1975	7 14.44 in 1945	7 4.48 in 1956
8 83.5 in 2010	80.7 in 1963	8 14.33 in 1965	8 4.53 in 1996
9 83.2 in 2018	9 80.8 in 2001	9 14.23 in 2018	9 4.87 in 1957
10 83.0 in 2012	10 80.9 in 1986	10 14.21 in 2004	10 5.17 in 2009
83.0 in 1969	80.9 in 1973
12 82.9 in 2019		34 9.60 in 2019	42 9.60 in 2019
82.9 in 2011			

Normal Temperature for July at MKCF1 = 82.0°
Normal Rainfall for July at MKCF1 = 9.66 in.

Venice (Records Began May 1955):

Warmest Julys	Coollest Julys	Wettest Julys	Driest Julys
1 86.6 in 1989	1 80.5 in 1975	1 15.61 in 1995	1 2.02 in 1962
2 86.2 in 2010	80.5 in 1974	2 14.22 in 2006	2 2.12 in 1981
3 85.0 in 1998	3 80.7 in 1978	3 12.91 in 1984	3 2.33 in 1967
4 84.9 in 2011	80.7 in 1977	4 12.72 in 2015	4 2.61 in 1972
5 84.5 in 2012	80.7 in 1961	5 12.67 in 2001	5 2.98 in 1992
6 84.2 in 1996	6 80.8 in 2008	6 12.00 in 1991	6 3.04 in 1970
7 84.1 in 2016	80.8 in 1984	7 11.89 in 2008	7 3.06 in 2016
8 84.0 in 2018	8 80.9 in 1972	8 11.23 in 1971	8 3.14 in 2018
84.0 in 2003	80.9 in 1956	9 11.14 in 1987	9 3.31 in 2002
84.0 in 1997	10 81.0 in 1985	11.14 in 1974	10 3.34 in 2009
11 83.8 in 1993	81.0 in 1976		...
12 83.8 in 1999			21 5.19 in 2019
13 83.5 in 2019 in 2018			

Normal Temperature for July at VNCF1 = 82.3°
Normal Rainfall for July at VNCF1 = 7.32 in.

Wauchula 2 N (Records Began January 1933):

Warmest Julys	Coollest Julys	Wettest Julys	Driest Julys
1 84.5 in 2009	1 77.9 in 1950	1 15.54 in 1946	1 1.99 in 2016
2 83.9 in 1992	2 79.6 in 2013	2 14.60 in 1960	2 2.21 in 1981
3 83.8 in 1942	79.6 in 1947	3 13.76 in 1965	3 2.80 in 1962
4 83.6 in 2007	4 80.0 in 2001	4 13.72 in 2008	4 2.90 in 1999
5 83.5 in 2016	80.0 in 1955	5 13.62 in 1945	5 2.91 in 1992
83.5 in 2008	6 80.1 in 1974	6 13.43 in 2009	6 3.63 in 1985
7 83.4 in 1993	7 80.3 in 1965	7 13.31 in 2001	7 3.71 in 1996
83.4 in 1969	80.3 in 1956	8 13.27 in 1948	8 4.00 in 1934
9 83.2 in 2005	80.3 in 1954	9 12.46 in 1977	9 4.06 in 1950
10 83.1 in 1979	10 80.5 in 2012	10 12.45 in 1988	10 4.17 in 1980
...	80.5 in 1951
21 82.2 in 2019 in 2018	80.5 in 1938	61 6.66 in 2019	26 6.66 in 2019

Normal Temperature for July at WAUF1 = 83.3°
Normal Rainfall for July at WAUF1 = 7.94 in.

Arcadia (Records Began November 1899) :

Warmest Julys	Coollest Julys	Wettest Julys	Driest Julys
1 83.4 in 1942	1 79.7 in 1938	1 17.52 in 1965	1 1.93 in 1932
2 83.1 in 1981	2 79.9 in 1974	2 16.39 in 1905	2 2.32 in 1972
3 83.0 in 2016	79.9 in 1910	3 16.06 in 1951	3 2.46 in 1962
83.0 in 2005	4 80.0 in 1970	4 15.21 in 1945	4 3.11 in 1961
83.0 in 1932	80.0 in 1956	5 14.99 in 1974	5 3.31 in 1912
83.0 in 1902	6 80.1 in 1984	6 14.61 in 1948	6 3.50 in 1955
7 82.5 in 2010	80.1 in 1947	7 14.04 in 1973	7 3.91 in 1990
82.5 in 1940	80.1 in 1923	8 13.82 in 2001	3.91 in 1980
82.5 in 1912	9 80.2 in 1971	9 13.48 in 2013	9 3.99 in 1970
82.5 in 1901	10 80.3 in 1929	10 12.99 in 2009	10 4.11 in 1981
	
		80 5.97 in 2019	35 5.97 in 2019

Average Temperature for July 2019 = Not Available, Few Days Missing

Normal Temperature for July at ARCF1 = 81.6°

Normal Rainfall for July at ARCF1 = 7.71 in.

Archbold Bio Stn (Records Began January 1969) :

Warmest Julys	Coollest Julys	Wettest Julys	Driest Julys
1 83.5 in 2016	1 79.0 in 1974	1 17.27 in 2001	1 3.64 in 1994
2 83.2 in 2010	2 79.3 in 1984	2 16.89 in 1974	2 3.90 in 1972
3 82.6 in 2017	3 79.6 in 2008	3 14.85 in 2013	3 4.02 in 2003
82.6 in 1969	4 79.9 in 1985	4 13.09 in 1984	4 4.15 in 2011
5 82.3 in 2018	79.9 in 1982	5 12.79 in 2014	5 4.52 in 1987
82.3 in 2005	79.9 in 1975	6 12.06 in 2008	6 4.67 in 1992
7 82.2 in 1998	79.9 in 1972	7 11.05 in 2002	7 4.68 in 1977
8 82.1 in 2019	8 80.0 in 2006	8 11.03 in 1993	8 5.06 in 2000
9 82.0 in 2015	80.0 in 1994	9 10.93 in 2010	9 5.34 in 1999
82.0 in 2011	10 80.1 in 1976	10 10.89 in 1990	10 5.57 in 1996
	80.1 in 1971		11 5.72 in 2019

Normal Temperature for July at ACHF1 = 80.6°

Normal Rainfall for July at ACHF1 = 8.20 in.

Punta Gorda Area (Records Began June 1914) :

Warmest Julys	Coollest Julys	Wettest Julys	Driest Julys
1 84.3 in 2018	1 79.4 in 1929	1 18.25 in 1947	1 1.75 in 1932
84.3 in 2005	2 80.3 in 1938	2 15.10 in 1924	2 2.23 in 1963
3 84.1 in 1980	3 80.5 in 1925	3 14.66 in 1933	3 2.41 in 1930
84.1 in 1963	80.5 in 1917	4 14.22 in 1995	4 3.09 in 1966
5 84.0 in 2016	5 80.6 in 1974	5 13.66 in 2019	5 3.24 in 1962
84.0 in 1962	80.6 in 1919	6 13.23 in 2006	6 3.52 in 1990
84.0 in 1932	7 80.7 in 1949	7 13.15 in 1982	3.52 in 1979
8 83.8 in 2014	8 80.8 in 1971	8 12.91 in 1948	3.52 in 1934
9 83.6 in 2011	80.8 in 1922	9 12.40 in 2008	9 3.58 in 1917
83.6 in 1995	10 80.9 in 1955	10 12.14 in 1985	10 3.86 in 1970
83.6 in 1993			
83.6 in 1992			
83.6 in 1951			
...			
22 83.1 in 2019			
in 1986			
in 1960			

Normal Temperature for July at PGD = 83.0°

Normal Rainfall for July at PGD = 7.89 in.

Fort Myers Area (Records Began January 1902) :

Warmest Julys	Coollest Julys	Wettest Julys	Driest Julys
1 85.7 in 1981	1 79.0 in 1904	1 15.28 in 1941	1 2.28 in 1964
85.7 in 1979	2 79.1 in 1910	2 15.22 in 1920	2 2.92 in 2003
3 84.8 in 1997	3 80.2 in 1909	3 14.51 in 1991	3 3.50 in 1940
84.8 in 1996	80.2 in 1906	4 14.47 in 1974	4 3.53 in 1914
5 84.5 in 2016	80.2 in 1903	5 14.43 in 2006	5 3.93 in 1918
84.5 in 1992	6 80.5 in 1929	6 14.38 in 1987	6 4.05 in 1911
84.5 in 1942	80.5 in 1917	7 13.94 in 2001	7 4.06 in 1963
8 84.3 in 1982	80.5 in 1907	8 13.90 in 1905	8 4.29 in 2009
84.3 in 1980	80.5 in 1902	9 13.76 in 1960	9 4.60 in 1902
10 84.2 in 2010	10 80.6 in 1955	10 13.32 in 1949	10 4.65 in 1930
84.2 in 1962	80.6 in 1913
...	...	32 10.48 in 2019	87 10.48 in 2019
30 83.2 in 2019	89 83.2 in 2019		

Normal Temperature for July at FMY = 83.2°

Normal Rainfall for July at FMY = 9.04 in.

For more Climate information visit our web site at the following link:
<https://www.weather.gov/tampabay> and then go to the Climate and Past Weather drop down menu above the graphical forecast images.

Contact: Paul Close, Paul.Close@noaa.gov

Date: 08/10/2019