



NOAA - National Weather Service

Tampa Bay Area

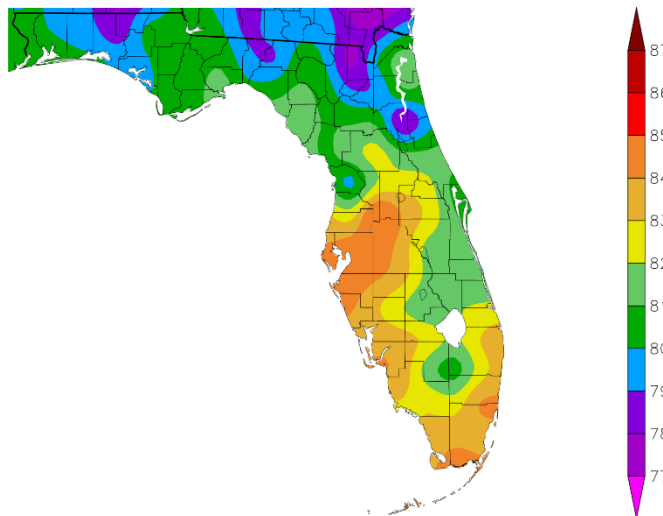
2525 14th Avenue SE, Ruskin, Florida 33570

813-645-2323 <https://weather.gov/tampabay>

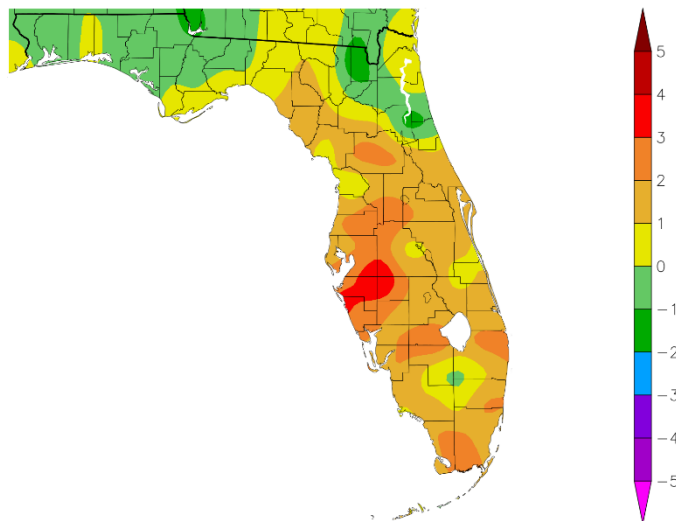
Preliminary June 2026 Weather Summary for West Central and Southwest Florida

Temperatures this June are averaging from about 1 to 3 degrees above normal across the region with most of the official climate locations on track to end up in the Top Ten Warmest for June.

Temperature (F)
6/1/2026 - 6/27/2026

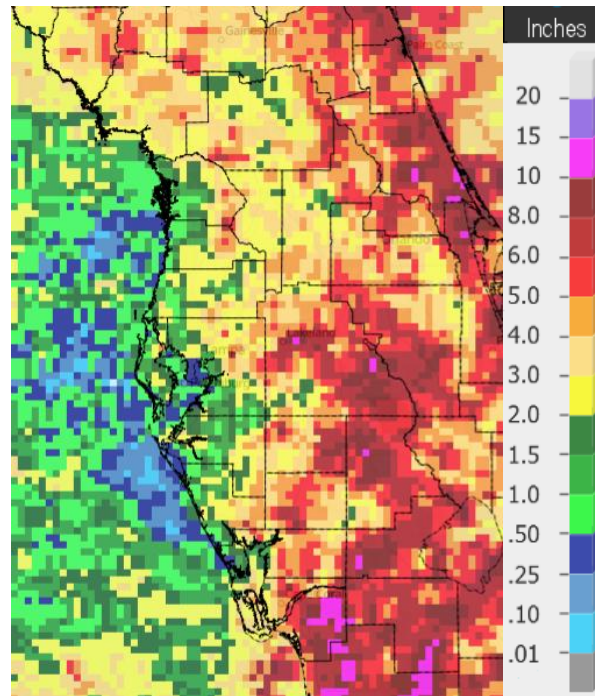


Departure from Normal Temperature (F)
6/1/2026 - 6/27/2026

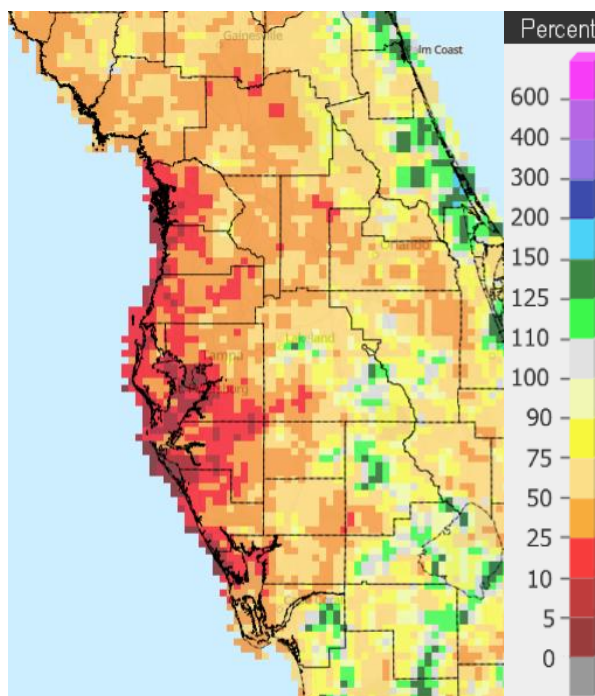


Graphics Source: NOAA Regional Climate Centers

Our rainy season has gotten off to a slow start as the high-pressure ridge axis setup south of the region with many days of west to southwest flow taking much of the shower and thunderstorm activity into the eastern half of the Florida peninsula. There have been a few days that we've seen a more typical pattern with some afternoon and evening thunderstorms, but overall, for this month most of the region is running below normal (orange/red areas on Percent of Normal map), while a few small areas in the interior are near to slightly above normal (gray/green areas on Percent of Normal map).



June 1-27, 2026 Rainfall



Percent of Normal

On the following pages are tables of the Top Ten Warmest, Coolest, Wettest and Driest Junes at some official NWS locations, which include the average/total for this June so far where available, and the 1991-2020 Normal (average) temperature and rainfall for the month of June.

Chiefland 5 ESE (records began July 1956):

Warmest Junes	Coolest Junes	Wettest Junes	Driest Junes
1 82.6 in 1998	1 77.0 in 1965	1 15.10 in 2023	1 1.00 in 1998
2 82.3 in 2016	2 77.1 in 1974	2 15.06 in 2003	2 1.27 in 1977
3 82.1 in 2024	77.1 in 1966	3 14.12 in 2012	3 1.97 in 1971
82.1 in 2022	4 77.4 in 1963	4 13.11 in 1974	4 2.33 in 1991
82.1 in 2015	5 77.7 in 1997	5 12.90 in 1965	5 2.62 in 2022
6 81.7 in 1989	77.7 in 1984	6 12.03 in 2018	6 3.10 in 1963
7 81.3 in 1985	7 77.9 in 2006	7 11.98 in 2002	7 3.21 in 2024
8 81.2 in 2018	77.9 in 1962	8 11.84 in 2009	8 3.27 in 1979
9 81.0 in 2019	9 78.0 in 1995	9 11.64 in 1983	9 3.48 in 1968
81.0 in 2011	10 78.1 in 1961	10 11.49 in 2016	10 3.51 in 2008
81.0 in 1977			

Average Temperature for June 2026 = Not Available Yet
 Normal Temperature for June Temp at CHIF1 = 79.3°

Total Rainfall for June 2026 = Not Available Yet
 Normal Rainfall for June at CHIF1 = 8.03 in.

Inverness 3 SE (records began July 1948):

Warmest Junes	Coolest Junes	Wettest Junes	Driest Junes
1 83.6 in 1981	1 77.7 in 1995	1 21.84 in 2003	1 1.69 in 1977
2 83.5 in 2010	2 78.1 in 1976	2 17.44 in 1974	2 1.95 in 1981
3 83.4 in 1998	3 78.2 in 1997	3 15.45 in 1982	3 2.07 in 1998
4 83.2 in 2024	4 78.4 in 2003	4 14.88 in 2012	4 2.55 in 2022
83.2 in 2019	5 78.6 in 1966	5 13.29 in 2021	5 2.73 in 1954
6 82.9 in 1969	6 78.9 in 1991	6 13.13 in 1989	6 2.93 in 2010
82.9 in 1952	78.9 in 1955	7 12.19 in 1985	7 3.14 in 1964
8 82.7 in 1950	8 79.0 in 2012	8 12.06 in 1960	8 3.31 in 2015
9 82.5 in 2016	9 79.0 in 1994	9 12.04 in 1965	9 3.70 in 1963
82.5 in 1958	10 79.2 in 2017	10 11.66 in 2009	10 3.80 in 1987

Average Temperature for June 1-27, 2026 = 80.3°
 Normal Temperature for June at INVF1 = 79.7°

Total Rainfall for June 1-27, 2026 = 4.32 inches
 Normal Rainfall for June at INVF1 = 8.13 in.

Brooksville Area (records began January 1892):

Warmest Junes	Coollest Junes	Wettest Junes	Driest Junes
1 84.2 in 1927	1 76.6 in 1917	1 21.68 in 2012	1 0.67 in 1998
2 82.7 in 1998	2 77.1 in 1920	2 20.81 in 1945	2 0.91 in 1979
3 82.6 in 2024	77.1 in 1894	3 19.29 in 2003	3 2.27 in 1977
4 82.2 in 1909	4 77.6 in 1966	4 14.64 in 2013	4 2.56 in 1956
82.2 in 1899	5 77.9 in 1910	5 14.37 in 1974	5 2.68 in 1988
6 82.1 in 1964	6 78.1 in 1946	6 14.29 in 1982	2.68 in 1931
82.1 in 1914	78.1 in 1930	7 14.19 in 1893	7 3.05 in 1933
8 81.9 in 2010	8 78.3 in 1976	8 13.94 in 1912	8 3.11 in 1954
81.9 in 1935	78.3 in 1965	9 13.89 in 1934	9 3.49 in 2025
10 81.7 in 2022	78.3 in 1919	10 13.69 in 1929	10 3.63 in 1918
81.7 in 1950			
81.7 in 1944			

Average Temperature for June 1-27, 2026 = 82.0°
Normal Temperature for June at BKV = 80.1°

Total Rainfall for June 1-27, 2026 = 1.00 inches
Normal Rainfall for June at BKV = 7.91 in.

St. Leo (records began April 1895):

Warmest Junes	Coollest Junes	Wettest Junes	Driest Junes
1 86.4 in 1998	1 75.9 in 1930	1 24.26 in 1934	1 0.08 in 1998
2 83.3 in 1981	2 77.1 in 1920	2 20.30 in 2012	2 1.60 in 1973
3 83.1 in 1952	3 77.3 in 1919	3 19.08 in 1974	3 2.14 in 1979
4 82.9 in 1897	4 77.7 in 1966	4 18.00 in 1896	4 2.33 in 1967
5 82.8 in 1948	77.7 in 1923	5 17.25 in 1943	5 2.68 in 1948
6 82.7 in 1899	6 78.1 in 2012	6 16.90 in 1945	6 2.95 in 1951
7 82.6 in 2009	78.1 in 1933	7 16.31 in 2005	7 3.02 in 1958
82.6 in 2004	8 78.3 in 1922	8 14.70 in 1999	8 3.16 in 1895
82.6 in 1898	78.3 in 1916	9 14.35 in 2002	9 3.28 in 1980
10 82.4 in 1985	78.3 in 1903	10 13.91 in 1910	10 3.62 in 1915
82.4 in 1950			

Average Temperature for May 2026 = Not Available Yet
Normal Temperature for June at STLF1 = 80.2°

Total Rainfall for June 2026 = Not Available Yet
Normal Rainfall for June at STLF1 = 8.34 in.

Tarpon Springs (records began January 1892):

Warmest Junes	Coollest Junes	Wettest Junes	Driest Junes
1 84.6 in 2004	1 77.2 in 1894	1 21.73 in 2012	1 0.62 in 1991
2 84.2 in 1998	2 77.9 in 1907	2 18.29 in 1974	2 0.72 in 1998
3 84.0 in 2019	77.9 in 1900	3 18.10 in 1909	3 1.17 in 1935
4 83.9 in 2010	4 78.1 in 1939	4 14.08 in 1934	4 1.47 in 1955
5 83.8 in 2024	78.1 in 1908	5 13.47 in 1900	5 1.49 in 1950
6 83.6 in 2005	6 78.3 in 1892	6 13.21 in 1912	6 1.56 in 1947
7 83.3 in 2018	7 78.4 in 1974	7 12.71 in 1943	7 1.63 in 1980
83.3 in 1994	78.4 in 1955	8 12.12 in 1957	8 1.70 in 1931
9 83.2 in 2020	78.4 in 1910	9 11.69 in 2001	9 1.73 in 1979
83.2 in 2016	78.4 in 1895	10 11.60 in 2019	10 1.83 in 1971
83.2 in 1927			1.83 in 1921

Average Temperature for June 1-24, 2026 = 83.9°

Normal Temperature for June at TRPF1 = 82.0°

Total Rainfall for June 1-24, 2026 = 2.02 inches

Normal Rainfall for June at TRPF1 = 7.06 in.

Tampa Area (records began April 1890):

Warmest Junes	Coollest Junes	Wettest Junes	Driest Junes
1 85.6 in 1998	1 78.5 in 1930	1 18.66 in 2012	1 1.26 in 1918
2 85.2 in 2022	2 78.6 in 1955	2 18.52 in 1945	2 1.46 in 1997
3 84.8 in 2010	3 78.9 in 1976	3 15.92 in 1934	3 1.47 in 1931
4 84.1 in 2024	78.9 in 1913	4 13.75 in 1974	4 1.77 in 2014
5 84.0 in 2020	78.9 in 1892	5 13.47 in 1912	5 1.86 in 1951
6 83.8 in 2021	6 79.1 in 1966	6 13.42 in 1896	6 2.03 in 1978
83.8 in 2019	7 79.2 in 1923	7 13.19 in 2003	7 2.05 in 1970
7 83.7 in 1985	79.2 in 1910	8 12.60 in 2021	8 2.07 in 1979
83.7 in 1977	79.2 in 1903	9 12.54 in 1943	9 2.41 in 1922
10 83.6 in 2018	10 79.3 in 1916	10 12.41 in 1892	10 2.54 in 1971
83.6 in 2011	79.3 in 1908		
	79.3 in 1894		

Average Temperature for June 1-27, 2026 = 84.8°

Normal Temperature for June at TPA = 82.9°

Total Rainfall for June 1-27, 2026 = 2.16 inches

Normal Rainfall for June at TPA = 7.37 in.

St Petersburg (records began August 1914):

Warmest Junes	Coollest Junes	Wettest Junes	Driest Junes
1 86.5 in 2010	1 79.1 in 1955	1 23.00 in 1974	1 0.90 in 1979
2 85.6 in 2024	2 79.6 in 1930	2 16.88 in 1943	2 1.03 in 1948
3 84.9 in 1998	3 80.0 in 1974	3 16.60 in 1995	3 1.26 in 1931
4 84.6 in 2004	4 80.3 in 1923	4 14.80 in 2016	4 2.05 in 1973
5 84.5 in 1977	80.3 in 1920	5 12.99 in 2003	5 2.21 in 1993
6 84.3 in 1973	6 80.4 in 1976	6 12.95 in 2012	6 2.35 in 1949
7 84.2 in 1969	80.4 in 1922	7 12.29 in 1939	7 2.36 in 2004
8 84.1 in 1987	80.4 in 1916	8 12.12 in 1945	8 2.56 in 1977
84.1 in 1981	9 80.5 in 1995	9 11.63 in 1968	9 2.63 in 1980
10 84.0 in 1944	80.5 in 1968	10 11.26 in 2025	10 2.73 in 1916
	80.5 in 1966		
	80.5 in 1956		
	80.5 in 1949		

Average Temperature for June 1-27, 2026 = 84.5°

Normal Temperature for June at SPG = 82.8°

Total Rainfall for June 1-27, 2026 = 2.12 inches

Normal Rainfall for June at SPG = 6.79 in.

Plant City (records began September 1892):

Warmest Junes	Coollest Junes	Wettest Junes	Driest Junes
1 85.7 in 2024	1 76.4 in 1933	1 17.08 in 1968	1 0.56 in 1979
2 84.5 in 2019	2 76.5 in 1930	2 17.01 in 2017	2 1.09 in 1948
3 84.3 in 2023	3 77.1 in 1931	3 16.48 in 1943	3 1.50 in 1961
84.3 in 2020	4 77.6 in 1976	4 16.44 in 1896	4 1.72 in 1931
5 84.1 in 2022	5 77.9 in 1936	5 16.37 in 1945	5 1.95 in 1998
6 83.9 in 2025	6 78.0 in 1966	6 16.24 in 1986	6 2.50 in 1993
7 83.8 in 1998	7 78.1 in 1938	7 15.44 in 2013	7 2.65 in 1956
8 83.5 in 2021	78.1 in 1932	8 15.34 in 1992	8 3.08 in 1898
9 83.4 in 2010	78.1 in 1925	9 14.98 in 2012	9 3.44 in 1950
10 83.2 in 2017	10 78.2 in 1929	10 14.93 in 1934	10 3.53 in 1973
83.2 in 2016	78.2 in 1907		3.53 in 1895
83.2 in 1981			

Average Temperature for June 1-27, 2026 = 84.5°

Normal Temperature for June at PLCF1 = 82.4°

Total Rainfall for June 1-27, 2026 = 2.18 inches

Normal Rainfall for June at PLCF1 = 9.71 in.

Lakeland (records began January 1915):

Warmest Junes	Coollest Junes	Wettest Junes	Driest Junes
1 84.8 in 2010	1 76.8 in 1930	1 15.55 in 2012	1 1.86 in 1998
2 84.5 in 1998	2 77.8 in 1966	2 14.86 in 1968	2 1.87 in 1948
3 84.4 in 2024	77.8 in 1929	3 14.63 in 1934	3 2.22 in 1915
4 83.5 in 1985	4 78.2 in 1919	4 14.48 in 2005	4 2.54 in 1931
5 83.4 in 2015	5 78.3 in 2007	5 14.06 in 2023	5 2.97 in 1971
6 83.3 in 1987	78.3 in 1920	6 14.00 in 1939	6 3.06 in 1979
83.3 in 1981	7 78.4 in 1968	7 13.22 in 1974	7 3.18 in 2010
83.3 in 1977	8 78.5 in 1965	8 13.12 in 1930	8 3.31 in 1970
9 83.2 in 2025	9 79.0 in 1976	9 13.10 in 2013	9 3.37 in 1952
10 83.1 in 2019	10 79.2 in 1974	10 13.09 in 1992	10 3.47 in 1955
83.1 in 2016	79.2 in 1923		3.47 in 1918
	79.2 in 1921		

Average Temperature for June 1-27, 2026 = 84.8°

Normal Temperature for June at LLDF1 = 81.8°

Total Rainfall for June 1-27, 2026 = 2.18 inches

Normal Rainfall for June at LLDF1 = 8.69 in.

Winter Haven Area (records began March 1941):

Warmest Junes	Coollest Junes	Wettest Junes	Driest Junes
1 85.5 in 1998	1 77.6 in 1968	1 16.44 in 1992	1 0.66 in 1998
2 84.9 in 2010	2 78.5 in 1976	2 15.04 in 1968	2 2.49 in 1993
3 84.5 in 2019	3 78.6 in 1974	3 14.46 in 1945	3 2.62 in 1973
4 84.4 in 2024	78.6 in 1971	4 13.75 in 2015	4 2.72 in 1957
5 84.2 in 1985	5 78.9 in 1972	5 13.67 in 2012	5 3.38 in 2000
6 84.0 in 1949	6 79.0 in 1966	6 13.07 in 1974	6 3.41 in 1963
7 83.7 in 2004	7 79.2 in 1980	7 12.50 in 2005	7 3.50 in 2007
8 83.6 in 2022	79.2 in 1965	8 12.08 in 2013	8 3.52 in 1979
83.6 in 2015	9 79.4 in 1960	9 11.87 in 1994	9 3.58 in 1952
83.6 in 1952	10 79.5 in 1967	10 11.25 in 2017	10 3.70 in 1970
	79.5 in 1962		

Average Temperature for June 1-27, 2026 = 83.7°

Normal Temperature for June at GIF = 83.0°

Total Rainfall for June 1-27, 2026 = 6.48 inches

Normal Rainfall for June at GIF = 7.36 in.

Bartow (records began June 1892):

Warmest Junes	Coollest Junes	Wettest Junes	Driest Junes
1 85.9 in 1998	1 77.4 in 1894	1 21.62 in 1912	1 0.73 in 1964
2 85.7 in 2015	2 77.7 in 1913	2 17.76 in 1934	2 0.79 in 1998
3 84.0 in 2014	3 77.9 in 1936	3 16.97 in 2005	3 1.41 in 1948
4 83.9 in 2010	4 78.1 in 1892	4 16.32 in 2003	4 2.12 in 1931
5 83.7 in 1927	5 78.4 in 1930	5 15.78 in 1939	5 2.41 in 1973
6 83.4 in 1969	6 78.6 in 1966	6 15.03 in 1945	6 2.59 in 1905
83.4 in 1944	7 78.7 in 1938	7 15.00 in 1949	7 3.09 in 1993
8 83.3 in 2013	8 78.8 in 1919	8 14.39 in 1894	8 3.22 in 1950
9 83.2 in 2024	78.8 in 1912	9 14.35 in 1942	9 3.52 in 1980
83.2 in 1981	10 79.0 in 1972	10 13.74 in 1953	10 3.64 in 1911
	79.0 in 1916		

Average Temperature for June 2026 = Not Available Yet

Normal Temperature for June at BARF1 = 81.1°

Total Rainfall for June 2026 = Not Available Yet

Normal Rainfall for June at BARF1 = 8.28 in.

Sarasota-Bradenton Area (records began January 1911):

Warmest Junes	Coollest Junes	Wettest Junes	Driest Junes
1 83.9 in 1998	1 76.4 in 1913	1 25.60 in 1912	1 0.64 in 1998
2 83.5 in 2010	2 77.5 in 1930	2 23.30 in 1943	2 1.20 in 2011
3 83.4 in 2019	3 77.8 in 1976	3 22.34 in 1992	3 1.28 in 1918
83.4 in 2016	4 78.0 in 1916	4 16.88 in 2024	4 1.30 in 2007
5 83.1 in 2024	5 78.1 in 1955	5 15.45 in 2012	5 1.46 in 1956
6 82.9 in 2023	6 78.2 in 1933	6 13.53 in 2025	6 1.58 in 1951
7 82.8 in 2020	7 78.3 in 1956	7 13.49 in 1945	7 1.68 in 1926
8 82.6 in 2021	78.3 in 1931	8 13.39 in 1968	8 1.69 in 1948
9 82.2 in 2022	9 78.5 in 1947	9 12.40 in 1974	9 2.38 in 2023
82.2 in 2018	78.5 in 1920	10 12.27 in 1976	10 2.44 in 1931

Average Temperature for June 1-27, 2026 = 84.8°

Normal Temperature for June at SRQ = 81.8°

Total Rainfall for June 1-27, 2026 = 0.88 inches

Normal Rainfall for June at SRQ = 7.05 in.

Myakka River State Park (Temperature records began March 1956/
Rainfall records began September 1943):

Warmest Junes	Coollest Junes	Wettest Junes	Driest Junes
1 85.2 in 1998	1 78.1 in 1962	1 26.16 in 1992	1 1.75 in 2007
2 84.4 in 2010	2 78.4 in 1968	2 22.74 in 2003	2 1.76 in 2011
3 83.0 in 2019	3 78.5 in 1976	3 20.94 in 2017	3 2.25 in 2018
83.0 in 2018	4 78.6 in 1984	4 20.03 in 1974	4 2.49 in 1980
5 82.5 in 1994	78.6 in 1960	5 19.92 in 2012	5 2.87 in 1984
6 82.3 in 1981	6 78.9 in 1974	6 17.03 in 1995	2.87 in 1948
7 82.1 in 2015	7 79.2 in 1961	7 16.60 in 1968	7 3.07 in 1979
82.1 in 1985	79.2 in 1959	8 16.53 in 2005	8 3.20 in 1988
9 82.0 in 2011	9 79.4 in 1986	9 15.84 in 2013	9 3.53 in 1955
10 81.9 in 2016	79.4 in 1963	10 15.77 in 1981	10 3.55 in 1956

Average Temperature for June 2026 = Not Available Yet
Normal Temperature for June at MKCF1 = 81.2°

Total Rainfall for June 2026 = Not Available Yet
Normal Rainfall for June at MKCF1 = 9.95 in.

Venice (records began May 1955):

Warmest Junes	Coollest Junes	Wettest Junes	Driest Junes
1 86.4 in 2010	1 78.6 in 1955	1 25.91 in 1992	1 1.04 in 1980
2 85.7 in 1998	2 78.7 in 1966	2 19.31 in 2003	1.04 in 1979
3 84.2 in 2024	3 79.0 in 1988	3 19.18 in 2005	3 1.06 in 1988
4 84.0 in 2019	79.0 in 1984	4 16.78 in 2012	4 1.33 in 1990
5 83.9 in 2004	5 79.3 in 1974	5 14.16 in 1995	5 1.38 in 1960
6 83.7 in 2011	79.3 in 1961	6 12.59 in 1962	6 1.57 in 2011
7 83.1 in 2023	79.3 in 1960	7 11.93 in 1974	7 1.69 in 2018
8 83.0 in 2009	8 79.6 in 1975	8 11.50 in 1982	8 2.01 in 1961
9 82.8 in 2020	79.6 in 1967	9 11.44 in 2025	9 2.43 in 1985
82.8 in 2018	79.6 in 1956	10 11.17 in 1968	10 2.45 in 1955
82.8 in 2013			

Average Temperature for June 1-27, 2026 = 83.8°
Normal Temperature for June at VNCF1 = 81.4°

Total Rainfall for June 1-27, 2026 = 1.66 inches
Normal Rainfall for June at VNCF1 = 7.81 in.

Wauchula (records began January 1933):

Warmest Junes	Coollest Junes	Wettest Junes	Driest Junes
1 83.9 in 2009	1 78.0 in 1955	1 19.40 in 1939	1 1.69 in 1998
2 83.4 in 1998	2 78.1 in 2012	2 17.61 in 2017	2 2.40 in 1952
3 82.9 in 2008	78.1 in 1996	3 16.20 in 2005	3 3.02 in 1948
4 82.7 in 2024	78.1 in 1976	4 16.03 in 1952	4 3.17 in 2018
5 82.6 in 1993	5 78.2 in 1994	5 15.96 in 1982	5 3.18 in 2000
82.6 in 1985	6 78.9 in 1999	6 15.85 in 1968	6 3.26 in 1964
82.6 in 1969	78.9 in 1966	7 15.24 in 1945	7 3.48 in 1958
8 82.2 in 1987	78.9 in 1956	8 15.11 in 1913	8 3.53 in 2010
82.2 in 1981	9 79.0 in 1965	9 14.97 in 1974	9 3.69 in 1956
10 82.1 in 2010	10 79.1 in 2014	10 14.77 in 1962	10 3.72 in 1960
	79.1 in 2007		

Average Temperature for June 2026 = Not Available Yet
Normal Temperature for June at WAUF1 = 80.5°

Total Rainfall for June 2026 = Not Available Yet
Normal Rainfall for June at WAUF1 = 8.46 in.

Archbold Bio Stn (records began January 1969):

Warmest Junes	Coollest Junes	Wettest Junes	Driest Junes
1 83.5 in 2010	1 77.1 in 1984	1 18.66 in 2002	1 0.90 in 1998
2 82.2 in 1998	2 77.4 in 1976	2 17.33 in 2013	2 1.70 in 1979
3 81.9 in 2017	3 78.1 in 1999	3 15.85 in 1986	3 2.40 in 1980
4 81.8 in 2024	4 78.2 in 2007	4 15.77 in 1992	4 2.79 in 2010
5 81.6 in 2016	78.2 in 1971	5 15.25 in 2023	5 3.01 in 1988
6 81.4 in 2019	6 78.4 in 1970	6 14.12 in 1974	6 3.27 in 1987
81.4 in 1981	7 78.5 in 1996	7 13.89 in 2005	7 3.76 in 2000
8 81.2 in 2025	8 78.7 in 1974	8 12.73 in 2015	8 4.64 in 2006
81.2 in 1985	9 78.8 in 1983	9 12.21 in 1969	9 4.79 in 1989
10 81.1 in 2015	78.8 in 1973	10 11.35 in 1994	10 4.89 in 2014

Average Temperature for June 1-23, 2026 = 81.4°
Normal Temperature for June at ACHF1 = 80.5°

Total Rainfall for June 1-37, 2026 = 2.06 inches
Normal Rainfall for June at ACHF1 = 8.85 in.

Punta Gorda Area (records began May 1914):

Warmest Junes	Coollest Junes	Wettest Junes	Driest Junes
1 84.5 in 2024	1 78.3 in 1930	1 23.99 in 1974	1 2.00 in 1979
2 84.1 in 1998	2 78.9 in 1938	2 20.29 in 1939	2 2.16 in 1960
3 83.8 in 2010	3 79.1 in 1976	3 19.75 in 1992	3 2.30 in 1920
4 83.6 in 2018	79.1 in 1929	4 17.63 in 1995	4 3.06 in 1924
5 83.3 in 2020	5 79.2 in 1936	5 16.66 in 2003	5 3.08 in 1927
83.3 in 1948	6 79.3 in 1971	6 16.51 in 1999	6 3.37 in 1964
7 83.1 in 1985	79.3 in 1955	7 15.93 in 1943	7 3.48 in 2007
83.1 in 1951	8 79.5 in 1968	8 15.92 in 1949	3.48 in 1977
9 83.0 in 2016	79.5 in 1967	9 15.39 in 1946	3.48 in 1916
83.0 in 1945	79.5 in 1923	10 14.81 in 2017	10 3.80 in 2023

Average Temperature for June 1-27, 2026 = 83.5°

Normal Temperature for June at PNTF1 = 81.7°

Total Rainfall for June 1-27, 2026 = 6.69 inches

Normal Rainfall for June at PNTF1 = 9.24 in.

Fort Myers Area (records began January 1902):

Warmest Junes	Coollest Junes	Wettest Junes	Driest Junes
1 85.9 in 1981	1 78.5 in 1908	1 27.61 in 1912	1 1.99 in 1980
2 85.3 in 2010	2 78.6 in 1904	2 22.28 in 2024	2 2.48 in 2014
3 84.5 in 1998	3 78.7 in 1930	3 20.25 in 1936	3 3.59 in 1932
4 84.0 in 1997	78.7 in 1910	4 20.10 in 1974	4 3.73 in 1944
5 83.8 in 1994	5 78.8 in 1976	5 18.73 in 1992	5 3.76 in 1985
6 83.7 in 1985	6 78.9 in 1955	6 18.42 in 2005	3.76 in 1913
83.7 in 1982	7 79.0 in 1912	7 17.92 in 1983	7 3.96 in 1931
8 83.6 in 2024	79.0 in 1903	8 16.43 in 1939	8 3.99 in 1973
9 83.4 in 2025	9 79.2 in 1917	9 16.10 in 1959	9 4.52 in 2001
83.4 in 2023	10 79.3 in 1918	10 16.06 in 1943	10 4.58 in 1964
83.4 in 1980	79.3 in 1913		

Average Temperature for June 1-27, 2026 = 84.1°

Normal Temperature for June at FMY = 82.3°

Total Rainfall for June 1-27, 2026 = 3.66 inches

Normal Rainfall for June at FMY = 9.66 in.

For more Climate information visit our web site at the following link:
<https://www.weather.gov/tampabay> and then go to the Climate and Past Weather link above the graphical forecast images.