



# NOAA - National Weather Service

Tampa Bay Area

2525 14th Avenue SE, Ruskin, Florida 33570

813-645-2323 <https://weather.gov/tampabay>

## Record Setting Warm and Dry March across West Central and Southwest Florida

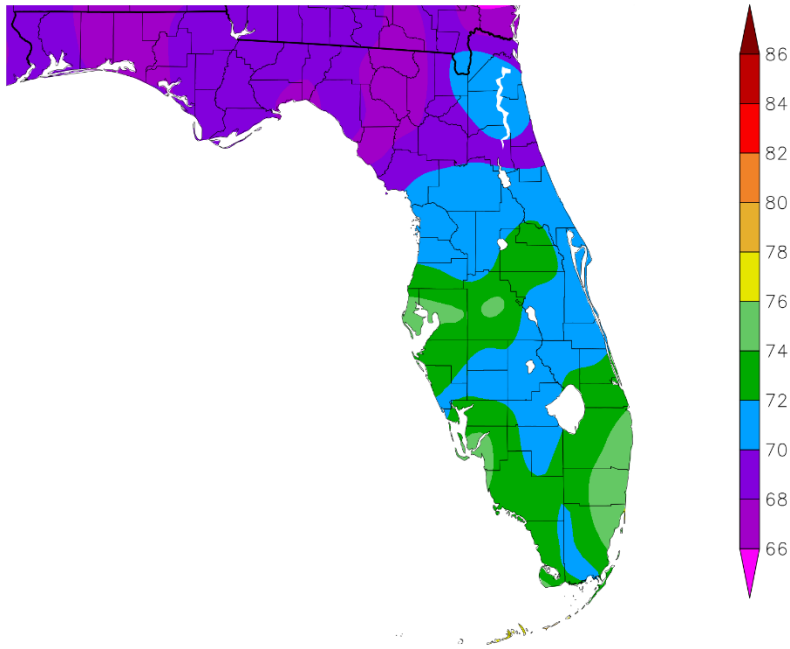
The temperature rollercoaster that we had seen for much of the past winter continued into the first week of March 2020 as a cold front moved across the region. Then for the rest of the month high pressure dominated bringing partly cloudy and warm weather with temperatures well above normal. For the month the overall average temperatures were about 3°F to almost 8°F above normal setting/tying the record warmest March in a few locations with many more in the top five.

### MARCH TEMPERATURE RANKINGS (Warmest - °F):

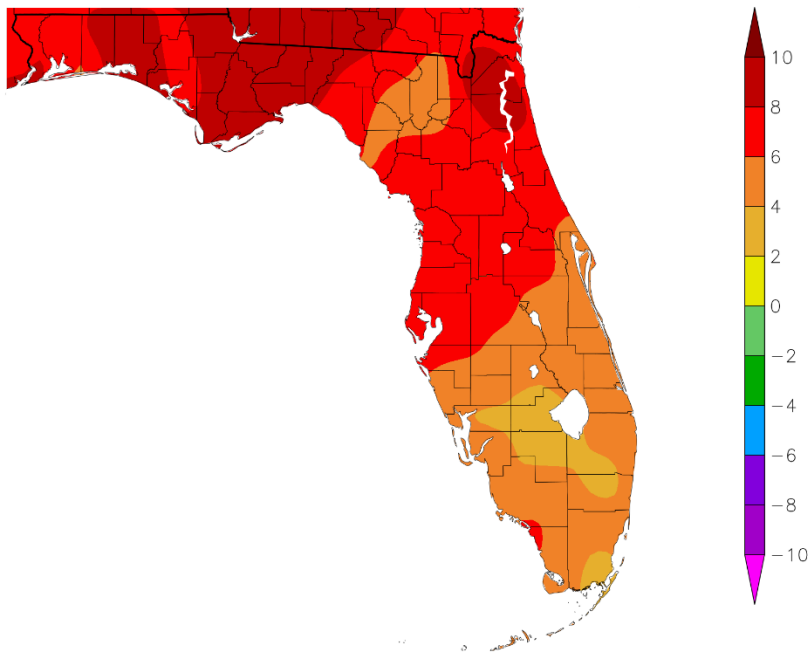
Location	Mar 2020 Rank	Mar 2020 Avg Temp	Normal Mar Temp	Dep fm Normal	Record/Prev Rec Warmest	Records Began
Winter Haven Area	1st	74.6°	67.9°	+6.7°	73.5/2015*	Mar 1941
Plant City	1st	74.3°	66.7°	+7.6°	73.2/1907	Sep 1892
Lakeland Area	1st(tie)	73.5°	66.8°	+6.7°	73.5/1921	Jan 1915
Sarasota-Bradenton Area	1st	73.1°	66.6°	+6.5°	73.0/2012	Jan 1911
Fort Myers Area	2nd	75.4°	69.9°	+5.5°	75.9/1997	Jan 1902
St Petersburg Area	2nd(tie)	74.5°	68.0°	+6.5°	74.6/2012	Aug 1914
Tampa Area	2nd	74.3°	67.3°	+7.0°	74.4/2012	Apr 1890
Inverness 3 SE	2nd	70.7°	63.6°	+7.1°	70.9/1997	Jul 1948
Chiefland 5 SE	2nd	69.5°	62.1°	+7.4°	77.1/1959	Jun 1956
Tarpon Springs	3rd(tie)	73.0°	66.2°	+6.8°	74.6/1997	Jan 1892
Brooksville Area	4th	71.5°	63.8°	+7.7°	73.0/1945	Jan 1892
Venice	5th	71.7°	67.2°	+4.5°	74.4/1997	Apr 1955
St Leo	6th	72.3°	67.4°	+4.9°	72.9/1907	Apr 1895
Archbold Bio Stn	8th(tie)	70.0°	66.1°	+3.9°	73.1/2003	Jan 1969
Bushnell 1 E	9th	68.6°	64.0°	+4.6°	71.5/1997	Jul 1948
Bartow	10th	72.3°	68.1°	+4.2°	76.1/2015	Jun 1892
Punta Gorda Area	13th	71.8°	68.4°	+3.4°	74.9/1948	May 1914
Myakka River State Park	14th	70.0°	67.6°	+2.4°	74.5/2003	Mar 1956
Wauchula 2 N	15th	70.2°	67.4°	+2.8°	72.9/1948	Jan 1933
Arcadia	17th(tie)	70.8°	66.2°	+4.6°	73.6/1948	Jan 1899

\* Last of multiple occurrences

Temperature (F)  
3/1/2020 - 3/31/2020



Departure from Normal Temperature (F)  
3/1/2020 - 3/31/2020



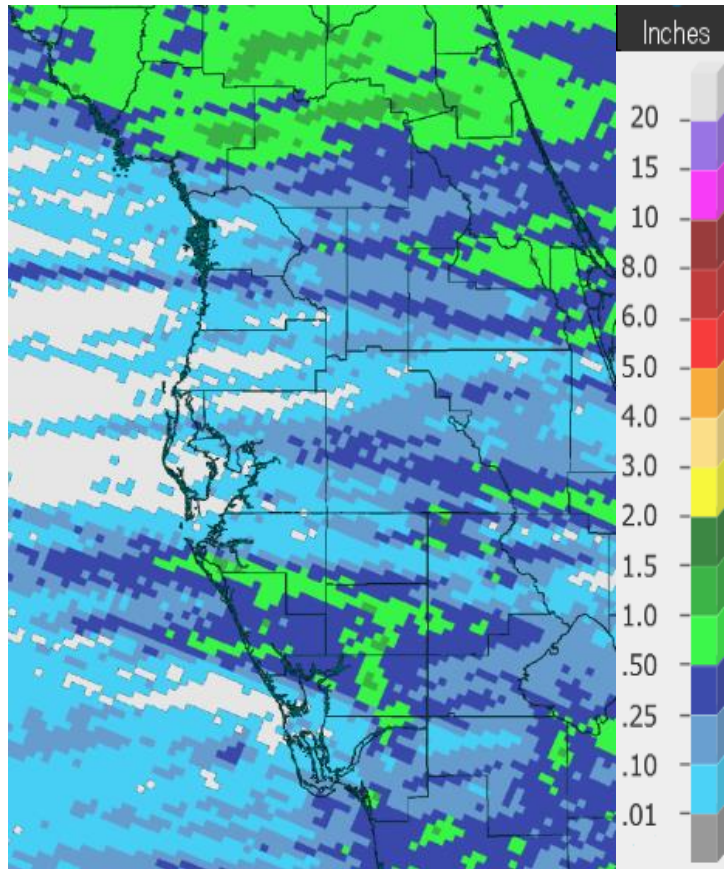
Graphics Source: NOAA Regional Climate Centers

When it comes to rainfall during March it was pretty much non-existent, except for the last 12 hours of the month when a cold front approached the region bringing scattered showers and a few thunderstorms. Some locations did see decent rainfall before the month came to an end with this front (i.e. Sarasota-Bradenton Int'l received 1.14 inches of rain in the last hour and a half of the month), but most areas saw less than one-quarter of an inch with many sites remaining as the driest/second driest for the month of March.

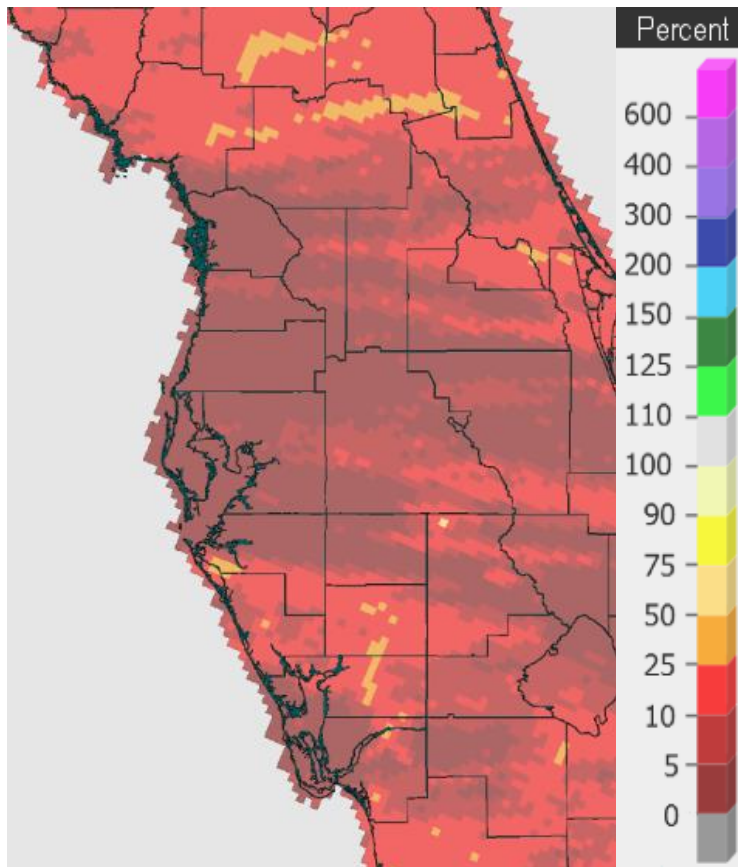
**MARCH RAINFALL RANKINGS (Driest - inches):**

Location	Mar 2020 Rank	Mar 2020 Rainfall	Normal Mar Rain	Dep fm Normal	Record/Prev Rec Driest	Records Began
Arcadia	1st	0.00	3.26	-3.26	0.02/1956	Jan 1899
Bartow	1st	0.00	3.48	-3.48	0.02/1908	Jun 1892
Bushnell 1 E	1st(tie)	0.00	3.93	-3.93	0.00/2006	Jul 1948
Lakeland Area	1st	0.00	3.89	-3.89	0.22/2006*	Jan 1915
St Leo	1st	0.00	4.15	-4.15	Trace/1907	Apr 1895
St Petersburg Area	1st	0.00	3.75	-3.75	0.03/1956	Aug 1914
Tarpon Springs	1st(tie)	0.00	3.81	-3.81	0.00/1907	Jan 1892
Venice	1st	0.00	3.81	-3.81	0.10/1956	Apr 1955
Wauchula 2 N	1st(tie)	0.00	3.79	-3.79	0.00/2002	Jan 1933
Tampa Area	1st(tie)	Trace	3.03	-3.03	Trace/2006*	Apr 1890
Archbold Bio Stn	1st(tie)	0.05	3.77	-3.72	0.05/1974	Jan 1969
Winter Haven Area	1st	0.14	3.57	-3.43	0.30/1956	Mar 1941
Inverness 3 SE	2nd	Trace	4.32	-4.32	0.00/1956	Jul 1948
Punta Gorda Area	2nd(tie)	Trace	3.31	-3.31	0.00/1956	May 1914
Brooksville Area	2nd	0.02	3.70	-3.68	Trace/1956	Jan 1892
Fort Myers Area	2nd	0.02	2.88	-2.86	0.00/1935	Jan 1902
Chiefland 5 SE	2nd	0.15	4.58	-4.43	0.06/2006	Jun 1956
Plant City	4th	0.02	3.57	-3.55	0.00/1908*	Sep 1892
Myakka River State Park	4th(tie)	0.23	3.86	-3.63	0.08/1956	Sep 1943
Sarasota-Bradenton Area	32nd	1.14	3.86	-2.72	Trace/1939	Jan 1911

\* Last of multiple occurrences



Rainfall March 2020



Percent of Normal

On the following pages are tables of the Top Ten Warmest, Coolest, Wettest, and Driest Marches at some official NWS locations, which include the average/total so far for this March where available, and the 1981-2010 Normal (average) temperature and rainfall for the month of March.

**CHIEFLAND 5 SE** (Records began in June 1956):

Warmest Marches		Coolest Marches		Wettest Marches		Driest Marches	
1	69.6 in 1997	1	55.5 in 1969	1	14.88 in 1959	1	0.06 in 2006
2	<b>69.5 in 2020</b>	2	56.1 in 2010	2	12.96 in 1996	2	<b>0.15 in 2020</b>
3	69.2 in 2015	3	57.3 in 2013	3	9.06 in 2014	3	0.63 in 2017
4	68.7 in 2012	4	57.8 in 1996	4	8.90 in 1960	4	0.69 in 2013
5	67.6 in 1973	5	59.7 in 1971	5	8.86 in 1978	5	0.71 in 1976
6	67.5 in 2003	6	59.8 in 2005	6	8.80 in 1973	6	0.74 in 2019
7	67.2 in 1977	7	60.0 in 1962	7	8.53 in 1991	7	0.95 in 2007
8	66.3 in 1976	8	60.7 in 1981	8	8.33 in 1983	8	0.99 in 1967
9	66.0 in 1982	9	60.8 in 1966	9	8.07 in 1992	9	1.26 in 2004
	66.0 in 1974	10	60.9 in 2014	10	7.90 in 1957	10	1.27 in 1979

Normal Temperature for March at CHIF1 = 62.1°  
 Normal Rainfall for March at CHIF1 = 4.58 inches

**INVERNESS 3 SE** (Records began in July 1948):

Warmest Marches		Coolest Marches		Wettest Marches		Driest Marches	
1	70.9 in 1997	1	57.9 in 1996	1	16.00 in 1960	1	0.00 in 1956
2	<b>70.7 in 2020</b>	2	58.8 in 1969	2	11.13 in 1987	2	<b>Trace in 2020</b>
3	70.0 in 1953	3	59.5 in 2005	3	9.21 in 1959	3	0.01 in 2006
4	69.7 in 2012	4	60.1 in 1999	4	9.00 in 2010	4	0.17 in 2019
	69.7 in 1976	5	60.4 in 1960	5	8.83 in 1982	5	0.56 in 2012
6	69.2 in 1974	6	60.6 in 2018	6	8.63 in 2001	6	0.65 in 2013
	69.2 in 1961	7	61.2 in 1993	7	8.18 in 1964	7	0.66 in 1967
8	69.0 in 2015	8	61.8 in 1981	8	8.05 in 1958	8	0.77 in 1964
9	68.8 in 1963	9	61.9 in 1988	9	8.00 in 1996	9	0.80 in 1949
10	68.4 in 1973		61.9 in 1978	10	7.96 in 1983	10	0.83 in 1966

Normal Temperature for March at INV1 = 63.6  
 Normal Rainfall for March at INV1 = 4.32 inches

**BUSHNELL 1 E** (records began in July 1948):

Warmest Marches	Coollest Marches	Wettest Marches	Driest Marches
1 71.5 in 1997	1 57.5 in 2013	1 14.38 in 1969	<b>1 0.00 in 2020</b>
2 69.9 in 1974	2 59.0 in 1969	2 13.75 in 1995	0.00 in 2006
3 69.6 in 1977	3 60.8 in 1996	3 9.97 in 1956	3 0.12 in 1966
4 69.4 in 2003	4 60.9 in 2018	9.97 in 1952	4 0.23 in 1956
69.4 in 1989	60.9 in 1983	5 9.28 in 1959	5 0.58 in 2013
6 69.3 in 1973	6 61.0 in 1981	6 8.66 in 2007	6 0.59 in 1994
7 69.0 in 2015	7 61.1 in 1960	7 8.16 in 1950	7 0.64 in 2017
69.0 in 2012	8 61.4 in 1968	8 7.71 in 1971	8 0.67 in 2000
<b>9 68.6 in 2020</b>	9 61.8 in 1978	9 7.57 in 1968	9 0.73 in 2012
10 68.5 in 1982	10 61.9 in 1966	10 7.06 in 1992	10 0.82 in 1961
68.5 in 1976			
68.5 in 1961			

Normal Temperature for March at BSHF1 = 64.0°

Normal Rainfall for March at BSHF1 = 3.93 inches

---

**BROOKSVILLE AREA** (Records began in January 1892):

Warmest Marches	Coollest Marches	Wettest Marches	Driest Marches
1 73.0 in 1945	1 56.9 in 2010	1 17.70 in 1960	1 Trace in 1956
2 71.7 in 1935	2 57.4 in 1915	2 13.40 in 1987	<b>2 0.02 in 2020</b>
3 71.6 in 1938	3 57.7 in 2013	3 10.69 in 1959	3 0.04 in 2006
<b>4 71.5 in 2020</b>	4 59.3 in 1969	4 10.58 in 1924	4 0.07 in 2017
5 71.3 in 1974	5 59.6 in 1931	5 9.10 in 1930	5 0.10 in 1908
6 71.0 in 1929	6 60.1 in 1901	6 9.00 in 1983	6 0.15 in 1898
7 70.9 in 1948	7 60.2 in 1999	7 8.29 in 2011	7 0.16 in 1916
70.9 in 1908	8 60.3 in 1924	8 8.00 in 1991	8 0.17 in 2019
70.9 in 1897	9 60.7 in 2018	9 7.97 in 1958	0.17 in 1945
10 70.6 in 1939	60.7 in 1926	10 7.77 in 1982	10 0.20 in 1904

Normal Temperature for March at BKV = 63.8°

Normal Rainfall for March at BKV = 3.70 inches

---

**ST LEO** (Records began in April 1895):

Warmest Marches	Coollest Marches	Wettest Marches	Driest Marches
1 72.9 in 1907	1 57.5 in 1931	1 17.91 in 1960	<b>1 0.00 in 2020</b>
2 72.8 in 1945	57.5 in 1915	2 16.50 in 1987	2 Trace in 1907
72.8 in 1897	3 59.2 in 1969	3 12.47 in 2011	3 0.01 in 1895
4 72.7 in 1997	4 60.0 in 2013	4 12.05 in 1959	4 0.02 in 2006
5 72.4 in 1948	5 60.2 in 2010	5 10.91 in 1924	5 0.10 in 1908
<b>6 72.3 in 2020</b>	6 60.6 in 1930	6 10.05 in 1900	6 0.19 in 1904
7 71.8 in 2003	7 61.1 in 1960	7 9.53 in 1930	7 0.30 in 1949
8 71.6 in 1938	8 61.5 in 1914	8 9.31 in 1958	8 0.33 in 1956
9 71.0 in 1974	9 61.6 in 1924	9 8.74 in 1983	9 0.38 in 1917
10 70.9 in 2012	10 61.9 in 1941	10 8.70 in 1988	10 0.47 in 1898

Normal Temperature for March at STLF1 = 67.4°

Normal Rainfall for March at STLF1 = 4.15 inches

---

**TARPON SPRINGS** (Records began in January 1892):

Warmest Marches	Coollest Marches	Wettest Marches	Driest Marches
1 74.6 in 1997	1 57.5 in 1915	1 14.21 in 1987	<b>1 0.00 in 2020</b>
2 73.2 in 1948	2 58.3 in 1969	2 13.72 in 1960	0.00 in 1907
<b>3 73.0 in 2020</b>	3 59.1 in 1960	3 12.56 in 1959	3 0.02 in 2006
73.0 in 1945	4 59.4 in 2013	4 11.29 in 2011	4 0.04 in 1908
5 71.8 in 2012	5 59.7 in 1931	5 9.68 in 1983	5 0.11 in 1949
71.8 in 1903	6 60.0 in 2010	6 8.41 in 1930	6 0.26 in 1898
71.8 in 1897	7 61.3 in 1941	7 8.18 in 1900	7 0.34 in 1956
8 71.6 in 1921	8 61.5 in 1968	8 8.12 in 1996	8 0.47 in 1945
9 71.3 in 1938	9 61.6 in 1914	9 7.31 in 1947	9 0.53 in 1935
71.3 in 1929	10 61.7 in 1892	10 7.22 in 2014	10 0.59 in 2017

Normal Temperature for March at TRPF1 = 66.2°

Normal Rainfall for March at TRPF1 = 3.81 inches

---

**TAMPA AREA** (Records began in April 1890):

Warmest Marches	Coollest Marches	Wettest Marches	Driest Marches
1 74.4 in 2012	1 57.7 in 1915	1 12.64 in 1959	<b>1 Trace in 2020</b>
<b>2 74.3 in 2020</b>	2 58.1 in 1969	2 12.01 in 1987	Trace in 2006
3 73.9 in 1997	3 60.7 in 1931	3 11.00 in 1960	Trace in 1907
4 73.2 in 1945	4 60.9 in 1968	4 9.87 in 1930	4 0.06 in 1956
5 73.0 in 2015	5 61.6 in 2013	5 9.79 in 2011	5 0.08 in 1908
6 72.6 in 1921	61.6 in 2010	6 7.59 in 1983	0.08 in 1898
7 72.2 in 1907	7 61.7 in 1941	7 7.36 in 1900	7 0.20 in 1945
8 71.9 in 1897	8 61.9 in 1947	8 7.24 in 1924	8 0.22 in 1949
9 71.8 in 1948	9 62.0 in 1960	9 7.07 in 1931	9 0.35 in 2018
71.8 in 1938	62.0 in 1924	10 6.98 in 1957	10 0.41 in 2000
71.8 in 1918	62.0 in 1892	6.98 in 1947	

Normal Temperature for March at TPA = 67.3°

Normal Rainfall for March at TPA = 3.03 inches

-----

**ST PETERSBURG AREA** (Records began in August 1914):

Warmest Marches	Coollest Marches	Wettest Marches	Driest Marches
1 74.6 in 2012	1 59.0 in 1915	1 11.79 in 1987	<b>1 0.00 in 2020</b>
<b>2 74.5 in 2020</b>	2 61.7 in 2010	2 11.33 in 1959	2 0.03 in 1956
74.5 in 1945	3 61.9 in 1969	3 8.38 in 1931	3 0.09 in 2006
4 73.9 in 1948	4 62.4 in 1996	4 8.20 in 1983	0.09 in 1939
5 73.3 in 1997	5 62.5 in 1931	5 8.14 in 2010	5 0.19 in 1917
6 73.2 in 1921	6 63.1 in 1960	6 7.86 in 1970	6 0.24 in 1916
7 73.0 in 2015	7 63.3 in 2013	7 7.75 in 1960	7 0.31 in 2002
8 72.8 in 1976	8 63.4 in 1947	8 7.65 in 1952	0.31 in 1949
9 72.7 in 1918	63.4 in 1924	9 7.30 in 2011	9 0.37 in 1945
10 72.6 in 2003	10 63.5 in 1941	10 7.21 in 2001	10 0.40 in 2012

Normal Temperature for March at SPG = 68.0°

Normal Rainfall for March at SPG = 3.75 inches



**PLANT CITY** (Records began in September 1892):

Warmest Marches	Coollest Marches	Wettest Marches	Driest Marches
<b>1 74.3 in 2020</b>	1 56.9 in 1931	1 15.68 in 1960	1 0.00 in 1908
2 73.2 in 1907	2 59.1 in 1915	2 13.70 in 1959	0.00 in 1907
3 73.1 in 1997	3 60.3 in 1932	3 12.78 in 1987	3 0.01 in 2006
4 72.6 in 2015	4 60.5 in 1969	4 10.59 in 1983	<b>4 0.02 in 2020</b>
5 72.4 in 2016	5 60.6 in 2010	5 8.81 in 1930	5 0.08 in 1999
6 72.2 in 1948	6 61.0 in 1930	6 7.93 in 2010	6 0.21 in 1945
72.2 in 1945	61.0 in 1901	7 7.81 in 1924	7 0.32 in 1916
8 71.8 in 2012	8 61.3 in 2013	8 7.51 in 1998	8 0.39 in 1975
71.8 in 1903	9 61.4 in 1924	9 7.49 in 2011	9 0.40 in 2017
10 71.7 in 2003	10 61.5 in 1941	7.49 in 2001	10 0.46 in 2002

Normal Temperature for March at PLCF1 = 66.7°

Normal Rainfall for March at PLCF1 = 3.57 inches

---

**LAKELAND AREA** (Records began in January 1915):

Warmest Marches	Coollest Marches	Wettest Marches	Driest Marches
<b>1 73.5 in 2020</b>	1 60.0 in 1969	1 12.94 in 1960	<b>1 0.00 in 2020</b>
73.5 in 1921	2 60.1 in 1915	2 12.16 in 1959	2 0.22 in 2006
3 73.4 in 1918	3 61.5 in 2010	3 10.75 in 1987	0.22 in 1916
4 72.8 in 1997	61.5 in 1960	4 9.22 in 1983	4 0.53 in 1925
72.8 in 1945	61.5 in 1931	5 8.57 in 1930	5 0.57 in 2009
6 72.7 in 1935	6 61.6 in 2013	6 8.53 in 2010	6 0.63 in 2000
7 72.6 in 1938	61.6 in 1941	7 8.15 in 1942	7 0.67 in 2007
8 72.1 in 2012	8 61.9 in 1924	8 7.44 in 2001	8 0.68 in 2002
72.1 in 2003	9 62.2 in 1947	9 7.20 in 1998	9 0.69 in 2017
10 72.0 in 2016	10 62.5 in 1968	10 6.90 in 1982	10 0.74 in 2012
72.0 in 2015			

Normal Temperature for March at LLDF1 = 66.8°

Normal Rainfall for March at LLDF1 = 3.89 inches

**WINTER HAVEN AREA** (Records began in January 1941):

Warmest Marches	Coollest Marches	Wettest Marches	Driest Marches
<b>1 74.6 in 2020</b>	1 58.4 in 1969	1 12.18 in 1960	<b>1 0.14 in 2020</b>
2 73.5 in 2015	2 61.5 in 2013	2 10.97 in 1959	2 0.30 in 1956
73.5 in 1945	3 61.6 in 2010	3 9.61 in 1987	3 0.38 in 2006
4 73.4 in 1997	4 62.2 in 1960	4 8.31 in 2011	4 0.48 in 2002
73.4 in 1948	5 62.5 in 1968	5 7.56 in 2010	5 0.57 in 1945
6 72.8 in 2012	6 62.9 in 1981	6 7.19 in 1998	6 0.58 in 2018
7 72.5 in 2003	62.9 in 1941	7 7.16 in 1970	0.58 in 2017
8 72.0 in 1977	8 63.5 in 1996	8 6.93 in 1983	8 0.60 in 2000
9 71.9 in 1989	9 63.6 in 1983	9 6.60 in 1942	9 0.61 in 2007
10 71.5 in 1974	10 64.0 in 1947	10 6.55 in 1969	10 0.64 in 1999

Normal Temperature for March at GIF = 67.9°

Normal Rainfall for March at GIF = 3.57 inches

---

**BARTOW** (Records began in June 1892):

Warmest Marches	Coollest Marches	Wettest Marches	Driest Marches
1 76.1 in 2015	1 60.8 in 1914	1 11.53 in 1959	<b>1 0.00 in 2020</b>
2 74.6 in 1903	2 61.5 in 1969	2 10.25 in 1987	2 0.02 in 1908
3 74.0 in 1997	3 62.3 in 2010	3 8.99 in 1960	3 0.05 in 1945
4 73.3 in 2003	4 62.5 in 1901	4 8.57 in 1944	4 0.10 in 2006
5 73.2 in 1948	5 62.7 in 1947	5 8.12 in 2001	5 0.36 in 2002
6 72.6 in 2012	6 62.9 in 1960	6 8.10 in 1947	6 0.41 in 1999
7 72.5 in 1945	7 63.5 in 1996	7 7.72 in 1930	7 0.45 in 2007
72.5 in 1907	63.5 in 1968	8 7.28 in 2010	8 0.46 in 1897
72.5 in 1897	9 63.9 in 2018	9 7.11 in 1970	9 0.47 in 1967
<b>10 72.3 in 2020</b>	10 64.0 in 1983	10 7.00 in 1983	10 0.52 in 1921

Normal Temperature for March at BARF1 = 68.1°

Normal Rainfall for March at BARF1 = 3.48 inches

---

**SARASOTA-BRADENTON AREA** (Records began in January 1911):

Warmest Marches	Coollest Marches	Wettest Marches	Driest Marches
<b>1 73.1 in 2020</b>	1 57.0 in 1915	1 11.10 in 1987	1 Trace in 1939
2 73.0 in 2012	2 59.3 in 1931	2 10.77 in 2001	2 0.10 in 1945
3 72.6 in 1997	3 60.4 in 2010	3 10.60 in 1958	3 0.21 in 1949
4 71.9 in 2003	4 60.7 in 1969	4 8.81 in 1959	4 0.26 in 1956
71.9 in 1948	5 60.8 in 2013	5 8.63 in 1983	5 0.28 in 2007
6 71.5 in 2015	6 61.7 in 1924	6 8.49 in 2011	6 0.34 in 1935
7 71.1 in 1921	61.7 in 1914	7 8.16 in 1998	7 0.37 in 1976
8 70.9 in 2016	8 62.0 in 1941	8 7.42 in 1982	8 0.44 in 1917
9 70.8 in 1945	62.0 in 1916	9 7.37 in 1969	9 0.47 in 2004
10 70.6 in 1974	10 62.6 in 1968	10 7.10 in 1970	10 0.48 in 2017
		...	...
		<b>78 1.14 in 2020</b>	<b>32 1.14 in 2020</b>

**\*\*\*Total Rainfall for March 2020 = 1.14 inches, all of which fell in the last 1.5 hours of the month.\*\*\***

Normal Temperature for March at SRQ = 66.6°  
Normal Rainfall for March at SRQ = 3.86 inches

---

**VENICE** (Records began in April 1955):

Warmest Marches	Coollest Marches	Wettest Marches	Driest Marches
1 74.4 in 1997	1 61.6 in 1969	1 11.21 in 1987	<b>1 0.00 in 2020</b>
2 74.0 in 2012	2 62.8 in 2013	2 9.57 in 1983	2 0.10 in 1956
3 73.8 in 2003	3 62.9 in 1960	3 9.38 in 1998	3 0.14 in 2009
4 72.2 in 2015	4 63.2 in 1968	4 8.83 in 2010	4 0.19 in 1971
<b>5 71.7 in 2020</b>	5 63.3 in 1962	5 8.05 in 1970	5 0.33 in 1977
6 70.8 in 2016	6 63.4 in 2010	6 7.74 in 1959	6 0.36 in 2006
70.8 in 2000	63.4 in 1981	7 7.45 in 2011	7 0.39 in 1967
8 70.7 in 1989	8 63.9 in 1978	8 7.41 in 2001	8 0.40 in 1974
9 70.1 in 2011	9 64.3 in 1996	9 7.10 in 1969	9 0.53 in 2004
70.1 in 2002	64.3 in 1988	10 6.60 in 1958	10 0.54 in 2002
	64.3 in 1958		

Normal Temperature for March at VNCF1 = 67.2°  
Normal Rainfall for March at VNCF1 = 3.81 inches

---

**MYAKKA RIVER STATE PARK** (Temperature records began in March 1956  
and Rainfall records began in Sep 1943):

Warmest Marches		Coolest Marches		Wettest Marches		Driest Marches	
1	74.5 in 2003	1	60.5 in 2013	1	12.88 in 1987	1	0.08 in 1956
2	74.2 in 1997	2	61.4 in 2010	2	12.24 in 1998	2	0.13 in 2006
3	72.6 in 2015	3	62.4 in 1960	3	9.74 in 1969	3	0.16 in 1945
4	71.9 in 2012	4	63.7 in 1971	4	8.80 in 1959	4	<b>0.23 in 2020</b>
5	71.6 in 1977	5	64.4 in 1996	5	8.21 in 1958		0.23 in 1966
6	71.3 in 2016		64.4 in 1959	6	7.81 in 1983	6	0.29 in 2002
	71.3 in 1976	7	64.8 in 1958	7	7.54 in 2010		0.29 in 1977
8	71.2 in 1992	8	65.2 in 1981	8	7.51 in 2011	8	0.41 in 1953
9	71.0 in 1982	9	65.4 in 2018	9	7.35 in 2001	9	0.42 in 1949
10	70.5 in 1995	10	65.7 in 1962	10	7.04 in 1947	10	0.47 in 1974
11	70.4 in 1974		65.7 in 1957				
12	70.3 in 1989						
13	70.2 in 2000						
<b>14</b>	<b>70.0 in 2020</b>						

Normal Temperature for March at MKCF1 = 67.6°  
Normal Rainfall for March at MKCF1 = 3.86 inches

**WAUCHULA 2 N** (Records began in January 1933):

Warmest Marches		Coolest Marches		Wettest Marches		Driest Marches	
1	72.9 in 1948	1	57.7 in 2013	1	12.14 in 1998	<b>1</b>	<b>0.00 in 2020</b>
2	72.6 in 2003	2	61.3 in 1969	2	9.22 in 1959		0.00 in 2002
3	72.0 in 1974	3	62.3 in 2018	3	7.72 in 1958	3	0.08 in 1967
	72.0 in 1945	4	62.5 in 1996	4	7.03 in 1987	4	0.18 in 1945
5	71.7 in 1938	5	62.7 in 1960	5	6.98 in 2001	5	0.20 in 1935
6	71.6 in 1939	6	63.4 in 1947	6	6.85 in 1965	6	0.22 in 2012
7	71.5 in 1935	7	63.5 in 1999	7	6.76 in 1947	7	0.30 in 2006
8	71.2 in 1977		63.5 in 1968	8	6.55 in 1983		0.30 in 1974
9	70.9 in 1997	9	63.6 in 1941	9	6.53 in 1969	9	0.35 in 1976
	70.9 in 1973	10	63.7 in 1983	10	5.80 in 1970	10	0.57 in 2004
11	70.6 in 2015						0.57 in 1939
	70.6 in 1976						
13	70.4 in 1982						
14	70.3 in 1989						
<b>15</b>	<b>70.2 in 2020</b>						

Normal Temperature for March at WAUF1 = 67.4°  
Normal Rainfall for March at WAUF1 = 3.79 inches

**ARCADIA** (Records began in January 1899):

Warmest Marches	Coollest Marches	Wettest Marches	Driest Marches
1 73.6 in 1948	1 58.9 in 2010	1 9.96 in 1987	<b>1 0.00 in 2020</b>
2 73.5 in 2003	2 59.8 in 1915	2 8.90 in 1982	2 0.02 in 1956
3 73.2 in 1913	3 59.9 in 2013	3 8.09 in 1947	3 0.06 in 1935
4 73.1 in 1921	4 60.6 in 1931	4 8.05 in 1900	4 0.10 in 1990
5 72.5 in 1997	5 60.9 in 1969	5 7.94 in 1998	5 0.18 in 1939
6 72.4 in 1945	6 61.6 in 1968	6 7.51 in 2010	6 0.23 in 1945
7 72.1 in 1912	7 62.3 in 1924	7 7.10 in 1969	7 0.30 in 1974
8 71.8 in 1974	8 62.8 in 1926	7.10 in 1958	8 0.31 in 1977
71.8 in 1929	9 63.2 in 1914	9 6.76 in 1931	9 0.41 in 1976
10 71.7 in 1903	10 63.3 in 1960	10 6.64 in 1970	10 0.43 in 1981
...			
<b>17 70.8 in 2020</b>			
70.8 in 1977			
70.8 in 1939			

Normal Temperature for March at ARCF1 = 66.2°

Normal Rainfall for March at ARCF1 = 3.26 inches

---

**ARCHBOLD BIO STN** (Records began in January 1969):

Warmest Marches	Coollest Marches	Wettest Marches	Driest Marches
1 73.1 in 2003	1 58.6 in 2010	1 10.20 in 2010	<b>1 0.05 in 2020</b>
2 72.6 in 1997	2 58.8 in 2013	2 8.85 in 1970	0.05 in 1974
3 72.3 in 2015	3 61.1 in 1969	3 7.52 in 2003	3 0.06 in 2002
4 70.6 in 2016	4 62.2 in 1996	4 7.43 in 1969	4 0.22 in 2007
70.6 in 1977	62.2 in 1983	5 6.61 in 1987	5 0.66 in 2007
70.6 in 1974	6 62.9 in 2018	6 6.52 in 1982	6 0.76 in 1999
7 70.2 in 2012	7 63.2 in 1999	7 6.42 in 1984	7 0.78 in 1972
<b>8 70.0 in 2020</b>	8 63.3 in 1981	8 6.21 in 1988	8 0.87 in 2006
70.0 in 1976	9 63.8 in 1998	9 6.03 in 1986	9 0.91 in 2009
10 69.8 in 1982	10 63.9 in 1971	10 5.74 in 1993	10 1.01 in 2012

Normal Temperature for March at ACHF1 = 66.1°

Normal Rainfall for March at ACHF1 = 3.77 inches

---

**PUNTA GORDA AREA** (Records began in May 1914):

Warmest Marches	Coollest Marches	Wettest Marches	Driest Marches
1 74.9 in 1948	1 57.9 in 1915	1 9.91 in 1947	1 0.00 in 1956
2 74.8 in 1945	2 62.0 in 2010	2 9.26 in 1970	<b>2 Trace in 2020</b>
3 73.7 in 1997	3 62.1 in 1916	3 8.71 in 2010	Trace in 1920
4 73.0 in 1953	4 62.3 in 1969	4 8.18 in 1987	4 0.09 in 2007
5 72.9 in 2003	62.3 in 1931	5 7.64 in 1930	5 0.10 in 1945
6 72.4 in 2015	6 62.4 in 2013	6 7.23 in 1960	0.10 in 1935
7 72.3 in 1944	7 63.5 in 1941	7 6.43 in 1958	7 0.15 in 1967
72.3 in 1968	8 64.2 in 1968	8 6.34 in 1969	8 0.16 in 1938
9 72.2 in 1961	9 64.3 in 1924	9 6.14 in 1983	9 0.21 in 1923
72.2 in 1929	10 64.7 in 1971	10 5.84 in 1959	10 0.28 in 2006
11 72.1 in 1974			0.28 in 1922
12 72.0 in 2012			
<b>13 71.8 in 2020</b>			

Normal Temperature for March at PNTF1 = 68.4°

Normal Rainfall for March at PNTF1 = 3.31 inches

-----

**FORT MYERS AREA** (Records began in January 1902):

Warmest Marches	Coollest Marches	Wettest Marches	Driest Marches
1 75.9 in 1997	1 61.1 in 1915	1 18.58 in 1970	1 0.00 in 1935
<b>2 75.4 in 2020</b>	2 62.4 in 1931	2 10.31 in 1958	<b>2 0.02 in 2020</b>
3 74.8 in 2003	3 63.0 in 2010	3 8.94 in 1947	3 0.03 in 1974
4 74.6 in 2015	4 63.4 in 1969	4 7.78 in 1903	4 0.04 in 1939
5 74.4 in 1948	5 63.7 in 1941	5 7.41 in 1983	5 0.05 in 1956
6 73.3 in 2012	6 64.3 in 2013	6 7.21 in 2010	0.05 in 1916
7 73.2 in 1921	7 64.4 in 1914	7 6.88 in 1941	7 0.08 in 1907
8 73.1 in 1929	8 64.5 in 1960	8 6.64 in 1931	8 0.09 in 1977
9 73.0 in 1982	9 64.6 in 1968	9 6.59 in 2005	9 0.10 in 1945
10 72.6 in 1913	10 65.0 in 1926	10 6.38 in 1984	10 0.13 in 2007
			0.13 in 1949

Normal Temperature for March at FMY = 69.9°

Normal Rainfall for March at FMY = 2.88 inches

-----

For more Climate information visit our web site at the following link:  
<https://www.weather.gov/tampabay> and then go to the Climate and Past  
Weather drop down menu above the graphical forecast images.