



NOAA - National Weather Service

Tampa Bay Area

2525 14th Avenue SE, Ruskin, Florida 33570

813-645-2323 <https://weather.gov/tampabay>

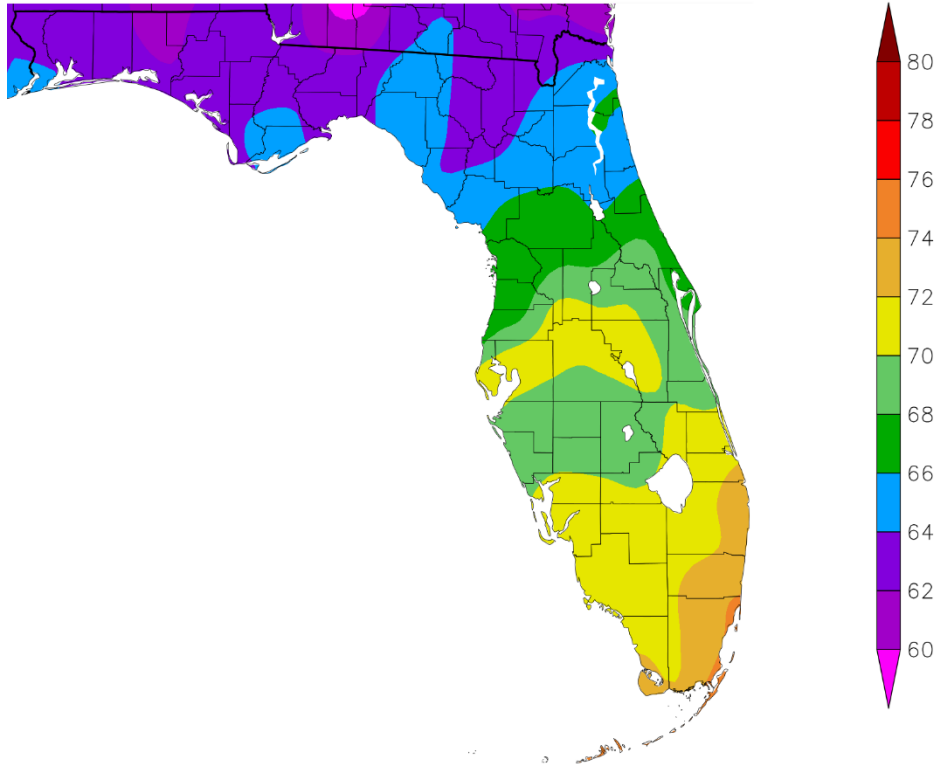
March 2021 Climate Summary for West Central and Southwest Florida

The temperature rollercoaster that we had seen for much of the past winter continued into March 2021 as a few cold fronts moved across the region. For the month temperatures averaged from about 1° to 3°F above normal across the area, thanks in part to the well above normal temperatures during the last week. However, these averages did not place any location in the Top Ten Warmest for March

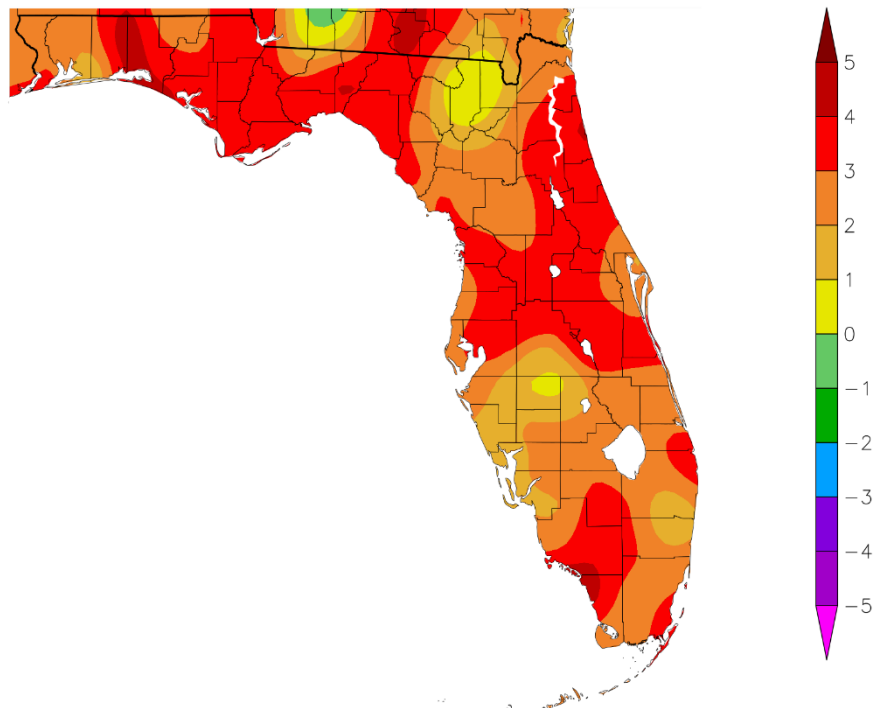
MARCH TEMPERATURE RANKINGS (°F):

Location	Rank	March 2021 Avg Temp	Normal Mar Temp	Dep fm Normal	Records Began
Winter Haven Area	15th Warmest	70.9°	67.9°	+4.0°	Mar 1941
Lakeland Area	16th Warmest (tie)	71.2°	68.6°	+2.6°	Jan 1915
Archbold Bio Stn	16th Warmest	68.8°	66.1°	+2.7°	Jan 1969
Inverness 3 SE	16th Warmest	67.1°	63.6°	+3.5°	Jul 1948
Tampa Area	17th Warmest (tie)	70.9°	67.3°	+3.6°	Apr 1890
Chiefland 5 SE	20th Warmest (tie)	64.9°	62.1°	+2.8°	Jun 1956
St Petersburg Area	25th Warmest	70.6°	68.0°	+2.6°	Aug 1914
Myakka River State Park	26th Warmest (tie)	68.0°	67.6°	+0.4	Mar 1956
Bartow	28th Warmest (tie)	70.0°	68.1°	+1.9°	Jun 1892
Sarasota-Bradenton Area	29th Warmest	69.1°	66.6°	+2.5°	Jan 1911
Fort Myers Area	30th Warmest	71.6°	69.9°	+1.7°	Jan 1902
Wauchula 2 N	32nd Warmest (tie)	68.2°	67.4°	+0.8°	Jan 1933
Punta Gorda Area	34th Warmest	70.0°	68.4°	+1.6°	May 1914
Arcadia	45th Warmest	68.5°	66.2°	+2.3°	Nov 1899
Tarpon Springs	45th Warmest (tie)	67.8°	66.2°	+1.6°	Jan 1892
Brooksville Area	45th Warmest (tie)	67.1°	63.8°	+3.3°	Jan 1892

Temperature (F)
3/1/2021 - 3/31/2021



Departure from Normal Temperature (F)
3/1/2021 - 3/31/2021

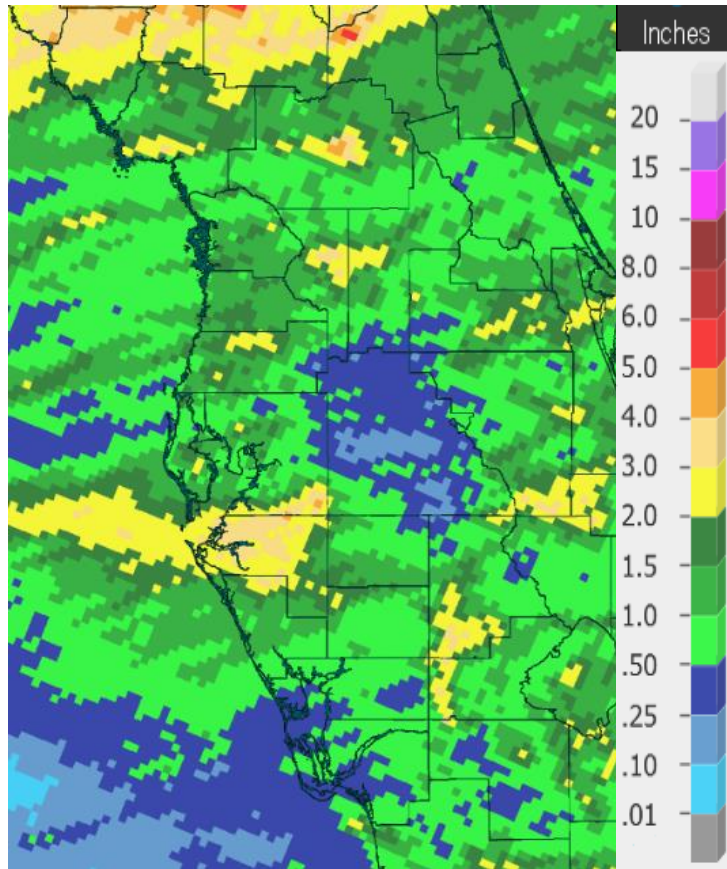


Graphics Source: NOAA Regional Climate Centers

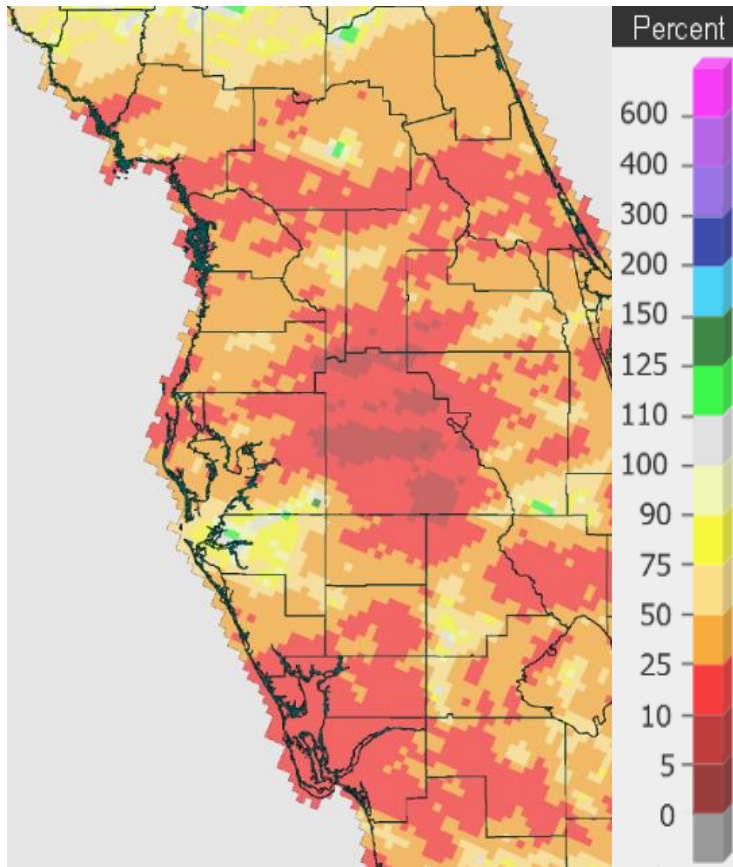
When it comes to rainfall this March was pretty dry in many areas, with the exceptions being across parts of Levy and Manatee counties. However, even with more rain in these areas almost the entire region ended up below normal for the month with a few of the official NWS locations ending up in the Top Ten Driest.

MARCH RAINFALL (inches):

Location	Mar 2021 Rain Total	Normal Mar Rain	Dep fm Normal	Ranking	Records Began
Chiefland 5 ESE	2.28	4.58	-2.30	19th Driest	Jul 1956
Sarasota-Bradenton Area	1.84	3.86	-2.02	47th Driest	Jan 1911
Brooksville Area	1.67	3.70	-2.03	40th Driest	Jan 1892
Tarpon Springs	1.46	3.81	-2.35	36th Driest	Jan 1892
St. Leo	1.39	4.15	-2.76	32nd Driest	Apr 1895
Myakka River State Park	1.16	3.86	-2.70	22nd Driest	Sep 1943
Tampa Area	1.07	3.03	-1.96	33rd Driest	Apr 1890
Inverness 3 SE	1.03	4.32	-3.29	12th Driest	Jul 1948
St. Petersburg Area	0.91	3.75	-2.84	24th Driest	Aug 1914
Archbold Bio Stn	0.83	3.77	-2.94	8th Driest	Jan 1969
Punta Gorda Area	0.59	3.31	-2.72	23rd Driest	May 1914
Arcadia	0.53	3.26	-2.73	11th Driest	Nov 1899
Wauchula 2 N	0.48	3.79	-3.31	10th Driest	Jan 1933
Winter Haven Area	0.41	3.57	-3.16	4th Driest	Mar 1941
Fort Myers Area	0.40	2.88	-2.48	23rd Driest	Jan 1902
Bartow	0.27	3.48	-3.21	5th Driest	Jun 1892
Lakeland Area	0.26	3.68	-3.42	4th Driest	Jan 1915



Rainfall March 2021



Percent of Normal

On the following pages are tables of the Top Ten Warmest, Coolest, Wettest, and Driest Marches at some official NWS locations, which include the average/total for this March where available, and the 1981-2010 Normal (average) temperature and rainfall for the month of March.

CHIEFLAND 5 SE (Records began in July 1956):

Warmest Marches		Coolest Marches		Wettest Marches		Driest Marches	
1	69.6 in 1997	1	55.5 in 1969	1	14.88 in 1959	1	0.06 in 2006
2	69.5 in 2020	2	56.1 in 2010	2	12.96 in 1996	2	0.15 in 2020
3	69.2 in 2015	3	57.3 in 2013	3	9.06 in 2014	3	0.63 in 2017
4	68.7 in 2012	4	57.8 in 1996	4	8.90 in 1960	4	0.69 in 2013
5	67.6 in 1973	5	59.7 in 1971	5	8.86 in 1978	5	0.71 in 1976
6	67.5 in 2003	6	59.8 in 2005	6	8.80 in 1973	6	0.74 in 2019
7	67.2 in 1977	7	60.0 in 1962	7	8.53 in 1991	7	0.95 in 2007
8	66.3 in 1976	8	60.7 in 1981	8	8.33 in 1983	8	0.99 in 1967
9	66.0 in 1982	9	60.8 in 1966	9	8.07 in 1992	9	1.26 in 2004
	66.0 in 1974	10	60.9 in 2014	10	7.90 in 1957	10	1.27 in 1979
...						...	
20	64.9 in 2021					19	2.28 in 2021
	64.9 in 2002						

Normal Temperature for March at CHIF1 = 62.1°
 Normal Rainfall for March at CHIF1 = 4.58 inches

INVERNESS 3 SE (Records began in July 1948):

Warmest Marches		Coolest Marches		Wettest Marches		Driest Marches	
1	70.9 in 1997	1	57.9 in 1996	1	16.00 in 1960	1	0.00 in 1956
2	70.7 in 2020	2	58.8 in 1969	2	11.13 in 1987	2	Trace in 2020
3	70.0 in 1953	3	59.5 in 2005	3	9.21 in 1959	3	0.01 in 2006
4	69.7 in 2012	4	60.1 in 1999	4	9.00 in 2010	4	0.17 in 2019
	69.7 in 1976	5	60.4 in 1960	5	8.83 in 1982	5	0.56 in 2012
6	69.2 in 1974	6	60.6 in 2018	6	8.63 in 2001	6	0.65 in 2013
	69.2 in 1961	7	61.2 in 1993	7	8.18 in 1964	7	0.66 in 1967
8	69.0 in 2015	8	61.8 in 1981	8	8.05 in 1958	8	0.77 in 1964
9	68.8 in 1963	9	61.9 in 1988	9	8.00 in 1996	9	0.80 in 1949
10	68.4 in 1973		61.9 in 1978	10	7.96 in 1983	10	0.83 in 1966
11	68.3 in 1977					11	0.85 in 1976
	68.3 in 1967					12	1.03 in 2021
13	68.0 in 2016						
14	67.7 in 1982						
15	67.4 in 1989						
16	67.1 in 2021						

Normal Temperature for March at INVF1 = 63.6
 Normal Rainfall for March at INVF1 = 4.32 inches

BROOKSVILLE AREA (Records began in January 1892):

Warmest Marches	Coollest Marches	Wettest Marches	Driest Marches
1 73.0 in 1945	1 56.9 in 2010	1 17.70 in 1960	1 Trace in 1956
2 71.7 in 1935	2 57.4 in 1915	2 13.40 in 1987	2 0.02 in 2020
3 71.6 in 1938	3 57.7 in 2013	3 10.69 in 1959	3 0.04 in 2006
4 71.5 in 2020	4 59.3 in 1969	4 10.58 in 1924	4 0.07 in 2017
5 71.3 in 1974	5 59.6 in 1931	5 9.10 in 1930	5 0.10 in 1908
6 71.0 in 1929	6 60.1 in 1901	6 9.00 in 1983	6 0.15 in 1898
7 70.9 in 1948	7 60.2 in 1999	7 8.29 in 2011	7 0.16 in 1916
70.9 in 1908	8 60.3 in 1924	8 8.00 in 1991	8 0.17 in 2019
70.9 in 1897	9 60.7 in 2018	9 7.97 in 1958	0.17 in 1945
10 70.6 in 1939	60.7 in 1926	10 7.77 in 1982	10 0.20 in 1904
...
45 67.1 in 2021	69 67.1 in 2021	88 1.67 in 2021	40 1.67 in 2021
67.1 in 1972	67.1 in 1972		
67.1 in 1899	67.1 in 1899		
67.1 in 1898	67.1 in 1898		

Normal Temperature for March at BKV = 63.8°

Normal Rainfall for March at BKV = 3.70 inches

ST LEO (Records began in April 1895):

Warmest Marches	Coollest Marches	Wettest Marches	Driest Marches
1 72.9 in 1907	1 57.5 in 1931	1 17.91 in 1960	1 0.00 in 2020
2 72.8 in 1945	57.5 in 1915	2 16.50 in 1987	2 Trace in 1907
72.8 in 1897	3 59.2 in 1969	3 12.47 in 2011	3 0.01 in 1895
4 72.7 in 1997	4 60.0 in 2013	4 12.05 in 1959	4 0.02 in 2006
5 72.4 in 1948	5 60.2 in 2010	5 10.91 in 1924	5 0.10 in 1908
6 72.3 in 2020	6 60.6 in 1930	6 10.05 in 1900	6 0.19 in 1904
7 71.8 in 2003	7 61.1 in 1960	7 9.53 in 1930	7 0.30 in 1949
8 71.6 in 1938	8 61.5 in 1914	8 9.31 in 1958	8 0.33 in 1956
9 71.0 in 1974	9 61.6 in 1924	9 8.74 in 1983	9 0.38 in 1917
10 70.9 in 2012	10 61.9 in 1941	10 8.70 in 1988	10 0.47 in 1898
	
		96 1.39 in 2021	32 1.39 in 2021

Average Temperature for March 2021 = Not Available, Several Days Missing

Normal Temperature for March at STLF1 = 67.4°

Normal Rainfall for March at STLF1 = 4.15 inches

TARPON SPRINGS (Records began in January 1892):

Warmest Marches	Coollest Marches	Wettest Marches	Driest Marches
1 74.6 in 1997	1 57.5 in 1915	1 14.21 in 1987	1 0.00 in 2020
2 73.2 in 1948	2 58.3 in 1969	2 13.72 in 1960	0.00 in 1907
3 73.0 in 2020	3 59.1 in 1960	3 12.56 in 1959	3 0.02 in 2006
73.0 in 1945	4 59.4 in 2013	4 11.29 in 2011	4 0.04 in 1908
5 71.8 in 2012	5 59.7 in 1931	5 9.68 in 1983	5 0.11 in 1949
71.8 in 1903	6 60.0 in 2010	6 8.41 in 1930	6 0.26 in 1898
71.8 in 1897	7 61.3 in 1941	7 8.18 in 1900	7 0.34 in 1956
8 71.6 in 1921	8 61.5 in 1968	8 8.12 in 1996	8 0.47 in 1945
9 71.3 in 1938	9 61.6 in 1914	9 7.31 in 1947	9 0.53 in 1935
71.3 in 1929	10 61.7 in 1892	10 7.22 in 2014	10 0.59 in 2017
...
45 67.8 in 2021	78 67.8 in 2021	92 1.46 in 2021	36 1.46 in 2021
67.8 in 2019	67.8 in 2019	1.46 in 2012	1.46 in 2012
67.8 in 2005	67.8 in 2005	1.46 in 1923	1.46 in 1923
67.8 in 1952	67.8 in 1952		

Normal Temperature for March at TRPF1 = 66.2°
Normal Rainfall for March at TRPF1 = 3.81 inches

TAMPA AREA (Records began in April 1890):

Warmest Marches	Coollest Marches	Wettest Marches	Driest Marches
1 74.4 in 2012	1 57.7 in 1915	1 12.64 in 1959	1 Trace in 2020
2 74.3 in 2020	2 58.1 in 1969	2 12.01 in 1987	Trace in 2006
3 73.9 in 1997	3 60.7 in 1931	3 11.00 in 1960	Trace in 1907
4 73.2 in 1945	4 60.9 in 1968	4 9.87 in 1930	4 0.06 in 1956
5 73.0 in 2015	5 61.6 in 2013	5 9.79 in 2011	5 0.08 in 1908
6 72.6 in 1921	61.6 in 2010	6 7.59 in 1983	0.08 in 1898
7 72.2 in 1907	7 61.7 in 1941	7 7.36 in 1900	7 0.20 in 1945
8 71.9 in 1897	8 61.9 in 1947	8 7.24 in 1924	8 0.22 in 1949
9 71.8 in 1948	9 62.0 in 1960	9 7.07 in 1931	9 0.35 in 2018
71.8 in 1938	62.0 in 1924	10 6.98 in 1957	10 0.41 in 2000
71.8 in 1918	62.0 in 1892	6.98 in 1947	
12 71.7 in 2003	
13 71.3 in 1935		99 1.07 in 2021	33 1.07 in 2021
14 71.2 in 2016			
15 71.0 in 2000			
71.0 in 1903			
17 70.9 in 2021			
70.9 in 1977			

Normal Temperature for March at TPA = 67.3°
Normal Rainfall for March at TPA = 3.03 inches

ST PETERSBURG AREA (Records began in August 1914):

Warmest Marches	Coollest Marches	Wettest Marches	Driest Marches
1 74.6 in 2012	1 59.0 in 1915	1 11.79 in 1987	1 0.00 in 2020
2 74.5 in 2020	2 61.7 in 2010	2 11.33 in 1959	2 0.03 in 1956
74.5 in 1945	3 61.9 in 1969	3 8.38 in 1931	3 0.09 in 2006
4 73.9 in 1948	4 62.4 in 1996	4 8.20 in 1983	0.09 in 1939
5 73.3 in 1997	5 62.5 in 1931	5 8.14 in 2010	5 0.19 in 1917
6 73.2 in 1921	6 63.1 in 1960	6 7.86 in 1970	6 0.24 in 1916
7 73.0 in 2015	7 63.3 in 2013	7 7.75 in 1960	7 0.31 in 2002
8 72.8 in 1976	8 63.4 in 1947	8 7.65 in 1952	0.31 in 1949
9 72.7 in 1918	63.4 in 1924	9 7.30 in 2011	9 0.37 in 1945
10 72.6 in 2003	10 63.5 in 1941	10 7.21 in 2001	10 0.40 in 2012
...	
25 70.6 in 2021		84 0.91 in 2021	24 0.91 in 2021

Normal Temperature for March at SPG = 68.0°
Normal Rainfall for March at SPG = 3.75 inches

PLANT CITY (Records began in September 1892):

Warmest Marches	Coollest Marches	Wettest Marches	Driest Marches
1 74.3 in 2020	1 56.9 in 1931	1 15.68 in 1960	1 0.00 in 1908
2 73.2 in 1907	2 59.1 in 1915	2 13.70 in 1959	0.00 in 1907
3 73.1 in 1997	3 60.3 in 1932	3 12.78 in 1987	3 0.01 in 2006
4 72.6 in 2015	4 60.5 in 1969	4 10.59 in 1983	4 0.02 in 2020
5 72.4 in 2016	5 60.6 in 2010	5 8.81 in 1930	5 0.08 in 1999
6 72.2 in 1948	6 61.0 in 1930	6 7.93 in 2010	6 0.21 in 1945
72.2 in 1945	61.0 in 1901	7 7.81 in 1924	7 0.32 in 1916
8 71.8 in 2012	8 61.3 in 2013	8 7.51 in 1998	8 0.39 in 1975
71.8 in 1903	9 61.4 in 1924	9 7.49 in 2011	9 0.40 in 2017
10 71.7 in 2003	10 61.5 in 1941	7.49 in 2001	10 0.46 in 2002

Average Temperature for March 1-30, 2021 = 71.5°
Normal Temperature for March at PLCF1 = 66.7°

Total Rainfall for March 1-30, 2021 = 0.49 inches
Normal Rainfall for March at PLCF1 = 3.57 inches

LAKELAND AREA (Records began in January 1915):

Warmest Marches	Coollest Marches	Wettest Marches	Driest Marches
1 73.5 in 2020	1 60.0 in 1969	1 12.94 in 1960	1 0.00 in 2020
73.5 in 1921	2 60.1 in 1915	2 12.16 in 1959	2 0.22 in 2006
3 73.4 in 1918	3 61.5 in 2010	3 10.75 in 1987	0.22 in 1916
4 72.8 in 1997	61.5 in 1960	4 9.22 in 1983	4 0.26 in 2021
72.8 in 1945	61.5 in 1931	5 8.57 in 1930	5 0.53 in 1925
6 72.7 in 1935	6 61.6 in 2013	6 8.53 in 2010	6 0.57 in 2009
7 72.6 in 1938	61.6 in 1941	7 8.15 in 1942	7 0.63 in 2000
8 72.1 in 2012	8 61.9 in 1924	8 7.44 in 2001	8 0.67 in 2007
72.1 in 2003	9 62.2 in 1947	9 7.20 in 1998	9 0.68 in 2002
10 72.0 in 2016	10 62.5 in 1968	10 6.90 in 1982	10 0.69 in 2017
72.0 in 2015			
12 71.5 in 1989			
71.5 in 1976			
71.5 in 1948			
15 71.3 in 1929			
16 71.2 in 2021			
71.2 in 1974			
71.2 in 1917			

Normal Temperature for March at LLDF1 = 68.6°

Normal Rainfall for March at LLDF1 = 3.68 inches

WINTER HAVEN AREA (Records began in January 1941):

Warmest Marches	Coollest Marches	Wettest Marches	Driest Marches
1 74.6 in 2020	1 58.4 in 1969	1 12.18 in 1960	1 0.14 in 2020
2 73.5 in 2015	2 61.5 in 2013	2 10.97 in 1959	2 0.30 in 1956
73.5 in 1945	3 61.6 in 2010	3 9.61 in 1987	3 0.38 in 2006
4 73.4 in 1997	4 62.2 in 1960	4 8.31 in 2011	4 0.41 in 2021
73.4 in 1948	5 62.5 in 1968	5 7.56 in 2010	5 0.48 in 2002
6 72.8 in 2012	6 62.9 in 1981	6 7.19 in 1998	6 0.57 in 1945
7 72.5 in 2003	62.9 in 1941	7 7.16 in 1970	7 0.58 in 2018
8 72.0 in 1977	8 63.5 in 1996	8 6.93 in 1983	0.58 in 2017
9 71.9 in 1989	9 63.6 in 1983	9 6.60 in 1942	9 0.60 in 2000
10 71.5 in 1974	10 64.0 in 1947	10 6.55 in 1969	10 0.61 in 2007
11 71.4 in 1990			
71.4 in 1976			
13 71.2 in 2016			
71.2 in 1944			
15 70.9 in 2021			

Normal Temperature for March at GIF = 67.9°

Normal Rainfall for March at GIF = 3.57 inches

BARTOW (Records began in June 1892):

Warmest Marches	Coollest Marches	Wettest Marches	Driest Marches
1 76.1 in 2015	1 60.8 in 1914	1 11.53 in 1959	1 0.00 in 2020
2 74.6 in 1903	2 61.5 in 1969	2 10.25 in 1987	2 0.02 in 1908
3 74.0 in 1997	3 62.3 in 2010	3 8.99 in 1960	3 0.05 in 1945
4 73.3 in 2003	4 62.5 in 1901	4 8.57 in 1944	4 0.10 in 2006
5 73.2 in 1948	5 62.7 in 1947	5 8.12 in 2001	5 0.27 in 2021
6 72.6 in 2012	6 62.9 in 1960	6 8.10 in 1947	6 0.36 in 2002
7 72.5 in 1945	7 63.5 in 1996	7 7.72 in 1930	7 0.41 in 1999
72.5 in 1907	63.5 in 1968	8 7.28 in 2010	8 0.45 in 2007
72.5 in 1897	9 63.9 in 2018	9 7.11 in 1970	9 0.46 in 1897
10 72.3 in 2020	10 64.0 in 1983	10 7.00 in 1983	10 0.47 in 1967
...	...		
28 70.0 in 2021	69 70.0 in 2021		
70.0 in 1908	70.0 in 1908		

Normal Temperature for March at BARF1 = 68.1°

Normal Rainfall for March at BARF1 = 3.48 inches

SARASOTA-BRADENTON AREA (Records began in January 1911):

Warmest Marches	Coollest Marches	Wettest Marches	Driest Marches
1 73.1 in 2020	1 57.0 in 1915	1 11.10 in 1987	1 Trace in 1939
2 73.0 in 2012	2 59.3 in 1931	2 10.77 in 2001	2 0.10 in 1945
3 72.6 in 1997	3 60.4 in 2010	3 10.60 in 1958	3 0.21 in 1949
4 71.9 in 2003	4 60.7 in 1969	4 8.81 in 1959	4 0.26 in 1956
71.9 in 1948	5 60.8 in 2013	5 8.63 in 1983	5 0.28 in 2007
6 71.5 in 2015	6 61.7 in 1924	6 8.49 in 2011	6 0.34 in 1935
7 71.1 in 1921	61.7 in 1914	7 8.16 in 1998	7 0.37 in 1976
8 70.9 in 2016	8 62.0 in 1941	8 7.42 in 1982	8 0.44 in 1917
9 70.8 in 1945	62.0 in 1916	9 7.37 in 1969	9 0.47 in 2004
10 70.6 in 1974	10 62.6 in 1968	10 7.10 in 1970	10 0.48 in 2017
...
29 69.1 in 2021	80 69.1 in 2021	64 1.84 in 2021	47 1.84 in 2021

Normal Temperature for March at SRQ = 66.6°

Normal Rainfall for March at SRQ = 3.86 inches

VENICE (Records began in April 1955):

Warmest Marches	Coollest Marches	Wettest Marches	Driest Marches
1 74.4 in 1997	1 61.6 in 1969	1 11.21 in 1987	1 0.00 in 2020
2 74.0 in 2012	2 62.8 in 2013	2 9.57 in 1983	2 0.10 in 1956
3 73.8 in 2003	3 62.9 in 1960	3 9.38 in 1998	3 0.14 in 2009
4 72.2 in 2015	4 63.2 in 1968	4 8.83 in 2010	4 0.19 in 1971
5 71.7 in 2020	5 63.3 in 1962	5 8.05 in 1970	5 0.33 in 1977
6 70.8 in 2016	6 63.4 in 2010	6 7.74 in 1959	6 0.36 in 2006
70.8 in 2000	63.4 in 1981	7 7.45 in 2011	7 0.39 in 1967
8 70.7 in 1989	8 63.9 in 1978	8 7.41 in 2001	8 0.40 in 1974
9 70.1 in 2011	9 64.3 in 1996	9 7.10 in 1969	9 0.53 in 2004
70.1 in 2002	64.3 in 1988	10 6.60 in 1958	10 0.54 in 2002
	64.3 in 1958		

Average Temperature for March 1-28, 2021 = 68.9°

Normal Temperature for March at VNCF1 = 67.2°

Total Rainfall for March 1-28, 2021 = 0.95 inches

Normal Rainfall for March at VNCF1 = 3.81 inches

MYAKKA RIVER STATE PARK (Temperature records began in March 1956
and Rainfall records began in Sep 1943):

Warmest Marches	Coollest Marches	Wettest Marches	Driest Marches
1 74.5 in 2003	1 60.5 in 2013	1 12.88 in 1987	1 0.08 in 1956
2 74.2 in 1997	2 61.4 in 2010	2 12.24 in 1998	2 0.13 in 2006
3 72.6 in 2015	3 62.4 in 1960	3 9.74 in 1969	3 0.16 in 1945
4 71.9 in 2012	4 63.7 in 1971	4 8.80 in 1959	4 0.23 in 2020
5 71.6 in 1977	5 64.4 in 1996	5 8.21 in 1958	0.23 in 1966
6 71.3 in 2016	64.4 in 1959	6 7.81 in 1983	6 0.29 in 2002
71.3 in 1976	7 64.8 in 1958	7 7.54 in 2010	0.29 in 1977
8 71.2 in 1992	8 65.2 in 1981	8 7.51 in 2011	8 0.41 in 1953
9 71.0 in 1982	9 65.4 in 2018	9 7.35 in 2001	9 0.42 in 1949
10 70.5 in 1995	10 65.7 in 1962	10 7.04 in 1947	10 0.47 in 1974
...	65.7 in 1957
26 68.0 in 2021	29 68.0 in 2021	55 1.16 in 2021	22 1.16 in 2021
68.0 in 2017	68.0 in 2017		

Normal Temperature for March at MKCF1 = 67.6°

Normal Rainfall for March at MKCF1 = 3.86 inches

WAUCHULA 2 N (Records began in January 1933):

Warmest Marches		Coolest Marches		Wettest Marches		Driest Marches	
1	72.9 in 1948	1	57.7 in 2013	1	12.14 in 1998	1	0.00 in 2020
2	72.6 in 2003	2	61.3 in 1969	2	9.22 in 1959		0.00 in 2002
3	72.0 in 1974	3	62.3 in 2018	3	7.72 in 1958	3	0.08 in 1967
	72.0 in 1945	4	62.5 in 1996	4	7.03 in 1987	4	0.18 in 1945
5	71.7 in 1938	5	62.7 in 1960	5	6.98 in 2001	5	0.20 in 1935
6	71.6 in 1939	6	63.4 in 1947	6	6.85 in 1965	6	0.22 in 2012
7	71.5 in 1935	7	63.5 in 1999	7	6.76 in 1947	7	0.30 in 2006
8	71.2 in 1977		63.5 in 1968	8	6.55 in 1983		0.30 in 1974
9	70.9 in 1997	9	63.6 in 1941	9	6.53 in 1969	9	0.35 in 1976
	70.9 in 1973	10	63.7 in 1983	10	5.80 in 1970	10	0.48 in 2021
...		...					
32	68.2 in 2021	49	68.2 in 2021				
	68.2 in 2000		68.2 in 2000				

Normal Temperature for March at WAUF1 = 67.4°

Normal Rainfall for March at WAUF1 = 3.79 inches

ARCADIA (Records began in November 1899):

Warmest Marches		Coolest Marches		Wettest Marches		Driest Marches	
1	73.6 in 1948	1	58.9 in 2010	1	9.96 in 1987	1	0.00 in 2020
2	73.5 in 2003	2	59.8 in 1915	2	8.90 in 1982	2	0.02 in 1956
3	73.2 in 1913	3	59.9 in 2013	3	8.09 in 1947	3	0.06 in 1935
4	73.1 in 1921	4	60.6 in 1931	4	8.05 in 1900	4	0.10 in 1990
5	72.5 in 1997	5	60.9 in 1969	5	7.94 in 1998	5	0.18 in 1939
6	72.4 in 1945	6	61.6 in 1968	6	7.51 in 2010	6	0.23 in 1945
7	72.1 in 1912	7	62.3 in 1924	7	7.10 in 1969	7	0.30 in 1974
8	71.8 in 1974	8	62.8 in 1926		7.10 in 1958	8	0.31 in 1977
	71.8 in 1929	9	63.2 in 1914	9	6.76 in 1931	9	0.41 in 1976
10	71.7 in 1903	10	63.3 in 1960	10	6.64 in 1970	10	0.43 in 1981
...		...				11	0.53 in 2021
45	68.5 in 2021	67	68.5 in 2021				0.53 in 2002

Normal Temperature for March at ARCF1 = 66.2°

Normal Rainfall for March at ARCF1 = 3.26 inches

ARCHBOLD BIO STN (Records began in January 1969):

Warmest Marches	Coollest Marches	Wettest Marches	Driest Marches
1 73.1 in 2003	1 58.6 in 2010	1 10.20 in 2010	1 0.05 in 2020
2 72.6 in 1997	2 58.8 in 2013	2 8.85 in 1970	0.05 in 1974
3 72.3 in 2015	3 61.1 in 1969	3 7.52 in 2003	3 0.06 in 2002
4 70.6 in 2016	4 62.2 in 1996	4 7.43 in 1969	4 0.22 in 2007
70.6 in 1977	62.2 in 1983	5 6.61 in 1987	5 0.66 in 2007
70.6 in 1974	6 62.9 in 2018	6 6.52 in 1982	6 0.76 in 1999
7 70.2 in 2012	7 63.2 in 1999	7 6.42 in 1984	7 0.78 in 1972
8 70.0 in 2020	8 63.3 in 1981	8 6.21 in 1988	8 0.83 in 2021
70.0 in 1976	9 63.8 in 1998	9 6.03 in 1986	9 0.87 in 2006
10 69.8 in 1982	10 63.9 in 1971	10 5.74 in 1993	10 0.91 in 2009
11 69.4 in 1973			
12 69.3 in 1989			
13 69.2 in 2002			
14 69.0 in 1980			
15 68.9 in 1990			
16 68.8 in 2021			

Normal Temperature for March at ACHF1 = 66.1°

Normal Rainfall for March at ACHF1 = 3.77 inches

PUNTA GORDA AREA (Records began in May 1914):

Warmest Marches	Coollest Marches	Wettest Marches	Driest Marches
1 74.9 in 1948	1 57.9 in 1915	1 9.91 in 1947	1 0.00 in 1956
2 74.8 in 1945	2 62.0 in 2010	2 9.26 in 1970	2 Trace in 2020
3 73.7 in 1997	3 62.1 in 1916	3 8.71 in 2010	Trace in 1920
4 73.0 in 1953	4 62.3 in 1969	4 8.18 in 1987	4 0.09 in 2007
5 72.9 in 2003	62.3 in 1931	5 7.64 in 1930	5 0.10 in 1945
6 72.4 in 2015	6 62.4 in 2013	6 7.23 in 1960	0.10 in 1935
7 72.3 in 1944	7 63.5 in 1941	7 6.43 in 1958	7 0.15 in 1967
72.3 in 1968	8 64.2 in 1968	8 6.34 in 1969	8 0.16 in 1938
9 72.2 in 1961	9 64.3 in 1924	9 6.14 in 1983	9 0.21 in 1923
72.2 in 1929	10 64.7 in 1971	10 5.84 in 1959	10 0.28 in 2006
...
34 70.0 in 2021	68 70.0 in 2021	83 0.59 in 2021	23 0.59 in 2021

Normal Temperature for March at PGD = 68.4°

Normal Rainfall for March at PGD = 3.31 inches

FORT MYERS AREA (Records began in January 1902):

Warmest Marches	Coollest Marches	Wettest Marches	Driest Marches
1 75.9 in 1997	1 61.1 in 1915	1 18.58 in 1970	1 0.00 in 1935
2 75.4 in 2020	2 62.4 in 1931	2 10.31 in 1958	2 0.02 in 2020
3 74.8 in 2003	3 63.0 in 2010	3 8.94 in 1947	3 0.03 in 1974
4 74.6 in 2015	4 63.4 in 1969	4 7.78 in 1903	4 0.04 in 1939
5 74.4 in 1948	5 63.7 in 1941	5 7.41 in 1983	5 0.05 in 1956
6 73.3 in 2012	6 64.3 in 2013	6 7.21 in 2010	6 0.08 in 1907
7 73.2 in 1921	7 64.4 in 1914	7 6.88 in 1941	7 0.09 in 1977
8 73.1 in 1929	8 64.5 in 1960	8 6.64 in 1931	8 0.10 in 1945
9 73.0 in 1982	9 64.6 in 1968	9 6.59 in 2005	9 0.13 in 2007
10 72.6 in 1913	10 65.0 in 1926	10 6.38 in 1984	10 0.13 in 1949
...
30 71.6 in 2021	89 71.6 in 2021	98 0.40 in 2021	23 0.40 in 2021

Normal Temperature for March at FMY = 69.9°
Normal Rainfall for March at FMY = 2.88 inches

For more Climate information visit our web site at the following link:
<https://www.weather.gov/tampabay> and then go to the Climate and Past
Weather drop down menu above the graphical forecast images.