



NOAA - National Weather Service

Tampa Bay Area

2525 14th Avenue SE, Ruskin, Florida 33570

813-645-2323 <https://weather.gov/tampabay>

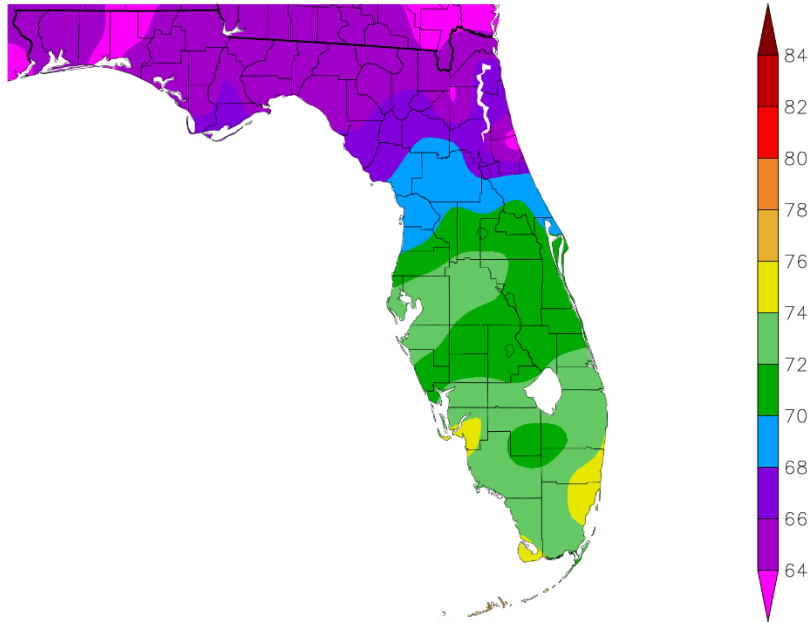
March 2026 Weather Summary for West Central and Southwest Florida

During March 2026 we saw a wide range of temperatures, with some days averaging 10-15° above normal, while there were a few others that were 10-15° below normal. For the month, temperatures averaged about 2.5° to 6°F above normal across the area with several of the official locations ending up in the Top Ten Warmest for March.

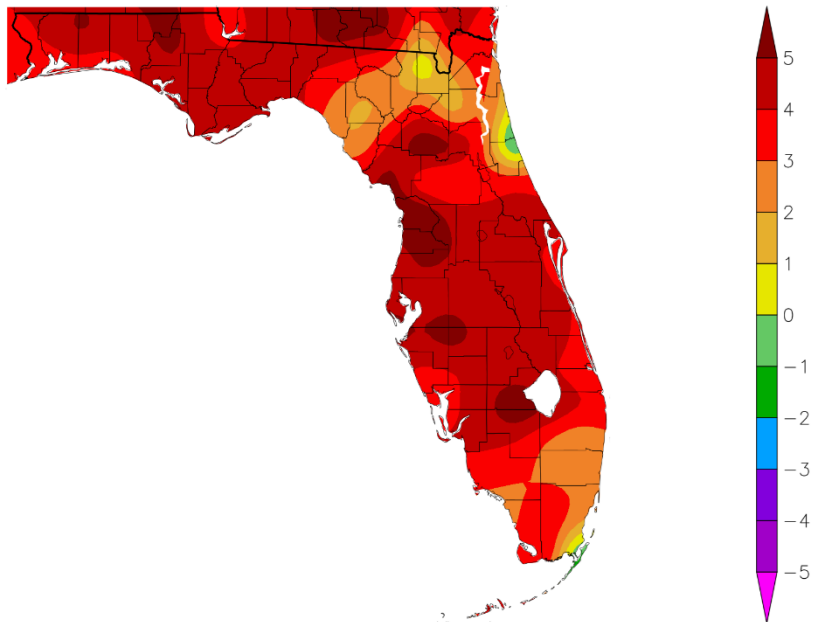
MARCH TEMPERATURE RANKINGS (°F):

Location	Rank	March 2026 Avg Temp	Normal Mar Temp	Dep fm Normal	Records Began
St Petersburg Area	1st Warmest	74.8°	69.0°	+5.8°	Aug 1914
Fort Myers Area	8th Warmest (tie)	74.3°	70.3°	+4.0°	Jan 1902
Lakeland Area	3rd Warmest (tie)	73.4°	68.3°	+5.1°	Jan 1915
Winter Haven Area	6th Warmest	73.0°	69.1°	+3.9°	Mar 1941
Sarasota-Bradenton Area	3rd Warmest	72.9°	68.1°	+4.8°	Jan 1911
Plant City	5th Warmest	72.8°	68.7°	+4.1°	Jan 1893
Tampa Area	7th Warmest	72.8°	68.6°	+4.2°	Apr 1890
Punta Gorda Area	9th Warmest (tie)	72.3°	68.5°	+3.8°	May 1914
Bartow	11th Warmest	71.7°	67.7°	+4.0°	Jun 1892
Venice	9th Warmest	71.1°	67.7°	+3.4°	May 1955
Archbold Bio Stn	4th Warmest (tie)	71.0°	67.1°	+3.9°	Jan 1969
Wauchula	9th Warmest (tie)	70.9°	66.2°	+4.7°	Jan 1933
St. Leo	10th Warmest (tie)	70.9°	66.4°	+4.5°	Apr 1895
Tarpon Springs	13th Warmest	70.7°	66.8°	+3.9°	Jan 1892
Myakka River State Pk	10th Warmest	70.6°	67.9°	+2.7°	Mar 1956
Brooksville Area	14th Warmest (tie)	70.0°	64.2°	+5.8°	Jan 1892
Inverness 3 SE	8th Warmest (tie)	69.0°	63.1°	+5.9°	Jul 1948

Temperature (F)
3/1/2026 - 3/31/2026



Departure from Normal Temperature (F)
3/1/2026 - 3/31/2026

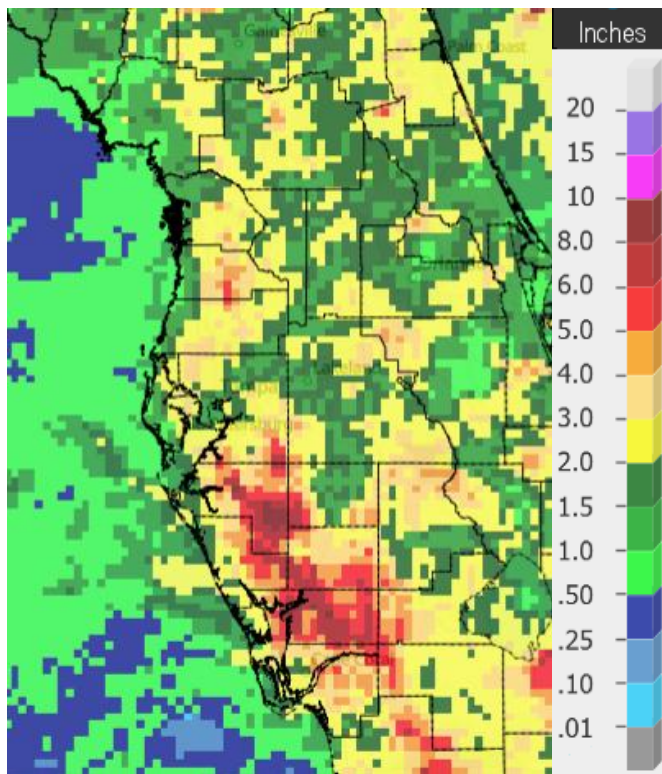


Graphics Source: High Plains Regional Climate Center (HPRCC)

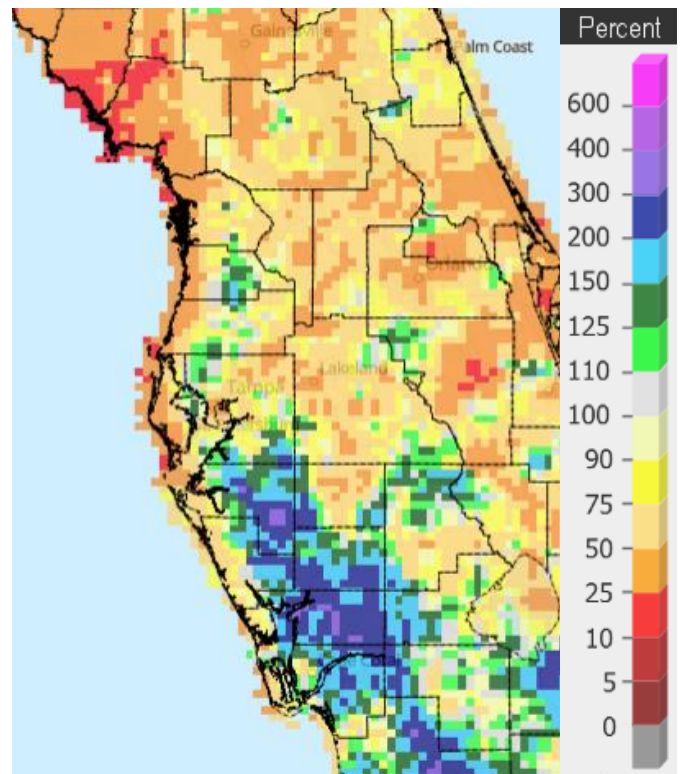
As for rainfall we saw a mix of above normal and below normal amounts across the area as a couple of cold fronts moved across the region, along with some days that looked more like an early summertime pattern.

MARCH RAINFALL (inches):

Location	Rank	March 2026 Rain Total	Normal Mar Rain	Dep fm Normal	Records Began
Brooksville Area	26th Wettest	5.24	2.66	+2.58	Jun 1892
Punta Gorda Area	16th Wettest (tie)	5.20	2.28	+2.92	May 1914
Myakka River State Pk	26th Wettest	4.13	3.00	+1.13	Sep 1943
Archbold Bio Stn	24th Wettest	3.02	2.87	+0.15	Jan 1969
Tampa Area	52nd Wettest	2.76	2.52	+0.24	Apr 1890
St. Petersburg Area	55th Driest	2.17	2.58	-0.41	Aug 1914
Fort Myers Area	75th Driest	2.02	2.07	-0.05	Jan 1902
Bartow	59th Driest	2.00	2.84	-0.84	Jun 1892
Sarasota-Bradenton Area	52nd Driest	1.87	2.85	-0.98	Jan 1911
Inverness 3SE	27th Driest	1.83	3.29	-1.46	Jul 1948
Wauchula	39th Driest (tie)	1.70	2.99	-1.29	Jan 1933
Venice	30th Driest	1.61	2.97	-1.36	Apr 1955
Plant City	39th Driest	1.60	2.78	-1.18	Jan 1893
St. Leo	40th Driest	1.59	3.18	-1.59	Apr 1895
Winter Haven Area	25th Driest	1.41	3.04	-1.63	Mar 1941
Lakeland Area	18th Driest (tie)	1.05	3.06	-2.01	Jan 1915
Tarpon Springs	11th Driest	0.54	3.08	-2.54	Jan 1892



Rainfall March 2026



Percent of Normal

On the following pages are tables of the Top Ten Warmest, Coolest, Wettest, and Driest Marches at some official NWS locations, which include the average/total for this March where available, and the 1991-2020 Normal (average) temperature and rainfall for the month of March.

CHIEFLAND 5 SE (Records began in July 1956):

Warmest Marches		Coolest Marches		Wettest Marches		Driest Marches	
1	69.6 in 1997	1	55.5 in 1969	1	14.88 in 1959	1	0.06 in 2006
2	69.5 in 2020	2	56.1 in 2010	2	12.96 in 1996	2	0.15 in 2020
3	69.2 in 2015	3	57.3 in 2013	3	9.20 in 2022	3	0.63 in 2017
4	68.7 in 2012	4	57.8 in 1996	4	9.06 in 2014	4	0.69 in 2013
5	67.6 in 1973	5	59.7 in 1971	5	8.90 in 1960	5	0.71 in 1976
6	67.5 in 2003	6	59.8 in 2005	6	8.86 in 1978	6	0.74 in 2019
7	67.2 in 1977	7	60.0 in 1962	7	8.80 in 1973	7	0.95 in 2007
8	66.3 in 1976	8	60.7 in 1981	8	8.53 in 1991	8	0.99 in 1967
9	66.0 in 1982	9	60.8 in 1966	9	8.33 in 1983	9	1.26 in 2004
	66.0 in 1974	10	60.9 in 2014	10	8.07 in 1992	10	1.27 in 1979

Average Temperature for March 2026 = Not Available Yet
 Normal Temperature for March at CHIF1 = 63.0°

Total Rainfall for March 2026 = Not Available Yet
 Normal Rainfall for March at CHIF1 = 3.81 inches

INVERNESS 3 SE (Records began in July 1948):

Warmest Marches		Coolest Marches		Wettest Marches		Driest Marches	
1	70.9 in 1997	1	57.9 in 1996	1	16.00 in 1960	1	0.00 in 1956
2	70.7 in 2020	2	58.8 in 1969	2	11.13 in 1987	2	Trace in 2020
3	70.0 in 1953	3	59.5 in 2005	3	9.21 in 1959	3	0.01 in 2006
4	69.7 in 2012	4	60.1 in 1999	4	9.00 in 2010	4	0.17 in 2019
	69.7 in 1976	5	60.4 in 1960	5	8.83 in 1982	5	0.56 in 2012
6	69.2 in 1974	6	60.6 in 2018	6	8.63 in 2001	6	0.57 in 2023
	69.2 in 1961	7	61.2 in 1993	7	8.18 in 1964	7	0.65 in 2013
8	69.0 in 2026	8	61.8 in 1981	8	8.05 in 1958	8	0.66 in 1967
	69.0 in 2015	9	61.9 in 1988	9	8.00 in 1996	9	0.77 in 1964
10	68.8 in 2023		61.9 in 1978	10	7.96 in 1983	10	0.80 in 1949
	68.8 in 1963					...	
						27	1.83 in 2026

Normal Temperature for March at INVF1 = 63.1
 Normal Rainfall for March at INVF1 = 3.29 inches

BROOKSVILLE AREA (Records began in January 1892):

Warmest Marches	Coollest Marches	Wettest Marches	Driest Marches
1 73.0 in 1945	1 56.9 in 2010	1 17.70 in 1960	1 Trace in 1956
2 71.7 in 1935	2 57.4 in 1915	2 13.40 in 1987	2 0.02 in 2020
3 71.6 in 1938	3 57.7 in 2013	3 10.69 in 1959	3 0.04 in 2006
4 71.5 in 2020	4 59.3 in 1969	4 10.58 in 1924	4 0.07 in 2017
5 71.3 in 1974	5 59.6 in 1931	5 9.10 in 1930	5 0.10 in 1908
6 71.0 in 1929	6 60.1 in 1901	6 9.00 in 1983	6 0.12 in 2023
7 70.9 in 1948	7 60.2 in 1999	7 8.29 in 2011	7 0.15 in 1898
70.9 in 1908	8 60.3 in 1924	8 8.00 in 1991	8 0.16 in 1916
70.9 in 1897	9 60.7 in 2018	9 7.97 in 1958	9 0.17 in 2019
10 70.6 in 1939	60.7 in 1926	10 7.77 in 1982	0.17 in 1945
11 70.2 in 1961		...	
12 70.1 in 1977		26 5.24 in 2026	
70.1 in 1976			
14 70.0 in 2026			
70.0 in 1921			

Normal Temperature for March at BKV = 64.2°
Normal Rainfall for March at BKV = 2.66 inches

ST LEO (Records began in April 1895):

Warmest Marches	Coollest Marches	Wettest Marches	Driest Marches
1 72.9 in 1907	1 57.5 in 1931	1 17.91 in 1960	1 0.00 in 2020
2 72.8 in 1945	57.5 in 1915	2 16.50 in 1987	2 Trace in 1907
72.8 in 1897	3 59.2 in 1969	3 12.47 in 2011	3 0.01 in 1895
4 72.7 in 1997	4 60.0 in 2013	4 12.05 in 1959	4 0.02 in 2006
5 72.4 in 1948	5 60.2 in 2010	5 10.91 in 1924	5 0.09 in 2023
6 72.3 in 2020	6 60.6 in 1930	6 10.05 in 1900	6 0.10 in 1908
7 71.8 in 2003	7 61.1 in 1960	7 9.53 in 1930	7 0.19 in 1904
8 71.6 in 1938	8 61.5 in 1914	8 9.31 in 1958	8 0.30 in 1949
9 71.0 in 1974	9 61.6 in 1924	9 8.74 in 1983	9 0.33 in 1956
10 70.9 in 2026	10 61.9 in 1941	10 8.70 in 1988	10 0.38 in 1917
70.9 in 2012	
		93 1.59 in 2026	40 1.59 in 2026

Normal Temperature for March at STLF1 = 66.4°
Normal Rainfall for March at STLF1 = 3.18 inches

TARPON SPRINGS (Records began in January 1892):

Warmest Marches	Coollest Marches	Wettest Marches	Driest Marches
1 74.6 in 1997	1 57.5 in 1915	1 14.21 in 1987	1 0.00 in 2020
2 73.2 in 1948	2 58.3 in 1969	2 13.72 in 1960	0.00 in 1907
3 73.0 in 2020	3 59.1 in 1960	3 12.56 in 1959	3 0.02 in 2006
73.0 in 1945	4 59.4 in 2013	4 11.29 in 2011	4 0.04 in 1908
5 71.8 in 2012	5 59.7 in 1931	5 9.68 in 1983	5 0.11 in 1949
71.8 in 1903	6 60.0 in 2010	6 8.41 in 1930	6 0.12 in 2023
71.8 in 1897	7 61.3 in 1941	7 8.18 in 1900	7 0.26 in 1898
8 71.6 in 1921	8 61.5 in 1968	8 8.12 in 1996	8 0.34 in 1956
9 71.3 in 1938	9 61.6 in 1914	9 7.31 in 1947	9 0.47 in 1945
71.3 in 1929	10 61.7 in 1892	10 7.22 in 2014	10 0.53 in 1935
11 71.1 in 2015			11 0.54 in 2026
12 71.0 in 2000			
13 70.7 in 2026			

Normal Temperature for March at TRPF1 = 66.8°

Normal Rainfall for March at TRPF1 = 3.08 inches

TAMPA AREA (Records began in April 1890):

Warmest Marches	Coollest Marches	Wettest Marches	Driest Marches
1 74.4 in 2012	1 57.7 in 1915	1 12.64 in 1959	1 Trace in 2020
2 74.3 in 2020	2 58.1 in 1969	2 12.01 in 1987	Trace in 2006
3 73.9 in 2022	3 60.7 in 1931	3 11.00 in 1960	Trace in 1907
73.9 in 1997	4 60.9 in 1968	4 9.87 in 1930	4 0.06 in 1956
5 73.2 in 1945	5 61.6 in 2013	5 9.79 in 2011	5 0.08 in 1908
6 73.0 in 2015	61.6 in 2010	6 7.59 in 1983	0.08 in 1898
7 72.8 in 2026	7 61.7 in 1941	7 7.36 in 1900	7 0.20 in 1945
8 72.6 in 1921	8 61.9 in 1947	8 7.24 in 1924	8 0.22 in 1949
9 72.3 in 2023	9 62.0 in 1960	9 7.07 in 1931	9 0.35 in 2023
10 72.2 in 1907	62.0 in 1924	10 6.98 in 1957	0.35 in 2018
	62.0 in 1892	6.98 in 1947	
	
		52 2.76 in 2026	85 2.76 in 2062

Normal Temperature for March at TPA = 68.6°

Normal Rainfall for March at TPA = 2.52 inches

ST PETERSBURG AREA (Records began in August 1914):

Warmest Marches	Coollest Marches	Wettest Marches	Driest Marches
1 74.8 in 2026	1 59.0 in 1915	1 11.79 in 1987	1 0.00 in 2020
2 74.6 in 2012	2 61.7 in 2010	2 11.33 in 1959	2 0.03 in 1956
3 74.5 in 2020	3 61.9 in 1969	3 8.38 in 1931	3 0.09 in 2006
74.5 in 1945	4 62.4 in 1996	4 8.20 in 1983	0.09 in 1939
5 73.9 in 1948	5 62.5 in 1931	5 8.14 in 2010	5 0.11 in 2023
6 73.3 in 1997	6 63.1 in 1960	6 7.86 in 1970	6 0.19 in 1917
7 73.2 in 1921	7 63.3 in 2013	7 7.75 in 1960	7 0.24 in 1916
8 73.0 in 2015	8 63.4 in 1947	8 7.65 in 1952	8 0.31 in 2002
9 72.8 in 1976	63.4 in 1924	9 7.30 in 2011	0.31 in 1949
10 72.7 in 1918	10 63.5 in 1941	10 7.21 in 2001	10 0.37 in 1945
	
		58 2.17 in 2026	55 2.17 in 2026

Normal Temperature for March at SPG = 69.0°
 Normal Rainfall for March at SPG = 2.58 inches

PLANT CITY (Records began in September 1892):

Warmest Marches	Coollest Marches	Wettest Marches	Driest Marches
1 74.3 in 2020	1 56.9 in 1931	1 15.68 in 1960	1 0.00 in 1908
2 73.2 in 1907	2 59.1 in 1915	2 13.70 in 1959	0.00 in 1907
3 73.1 in 2023	3 60.3 in 1932	3 12.78 in 1987	3 0.01 in 2006
73.1 in 1997	4 60.5 in 1969	4 10.59 in 1983	4 0.02 in 2020
5 72.8 in 2026	5 60.6 in 2010	5 8.81 in 1930	5 0.08 in 1999
72.8 in 2022	6 61.0 in 1930	6 7.93 in 2010	6 0.19 in 2023
7 72.6 in 2015	61.0 in 1901	7 7.81 in 1924	7 0.21 in 1945
8 72.4 in 2016	8 61.3 in 2013	8 7.51 in 1998	8 0.32 in 1916
9 72.2 in 2024	9 61.4 in 1924	9 7.49 in 2011	9 0.39 in 1975
72.2 in 1948	10 61.5 in 1941	7.49 in 2001	10 0.40 in 2017
72.2 in 1945	
		91 1.60 in 2026	39 1.60 in 2026

Normal Temperature for March at PLCF1 = 68.7°
 Normal Rainfall for March at PLCF1 = 2.78 inches

LAKELAND AREA (Records began in January 1915):

Warmest Marches	Coollest Marches	Wettest Marches	Driest Marches
1 73.5 in 2020	1 60.0 in 1969	1 12.94 in 1960	1 0.00 in 2020
73.5 in 1921	2 60.1 in 1915	2 12.16 in 1959	2 0.22 in 2006
3 73.4 in 2026	3 61.5 in 2010	3 10.75 in 1987	0.22 in 1916
73.4 in 1918	61.5 in 1960	4 9.22 in 1983	4 0.26 in 2021
5 72.8 in 1997	61.5 in 1931	5 8.57 in 1930	5 0.53 in 1925
72.8 in 1945	6 61.6 in 2013	6 8.53 in 2010	6 0.57 in 2009
7 72.7 in 2023	61.6 in 1941	7 8.15 in 1942	7 0.63 in 2025
72.7 in 1935	8 61.9 in 1924	8 7.44 in 2001	0.63 in 2000
9 72.6 in 1938	9 62.2 in 1947	9 7.20 in 1998	9 0.67 in 2007
10 72.2 in 2024	10 62.5 in 1968	10 6.90 in 1982	10 0.68 in 2002
			...
			18 1.05 in 2026
			1.05 in 1954

Normal Temperature for March at LLDF1 = 68.3°

Normal Rainfall for March at LLDF1 = 3.06 inches

WINTER HAVEN AREA (Records began in January 1941):

Warmest Marches	Coollest Marches	Wettest Marches	Driest Marches
1 74.6 in 2020	1 58.4 in 1969	1 12.18 in 1960	1 0.14 in 2020
2 73.5 in 2015	2 61.5 in 2013	2 10.97 in 1959	2 0.19 in 2023
73.5 in 1945	3 61.6 in 2010	3 9.61 in 1987	3 0.30 in 1956
4 73.4 in 1997	4 62.2 in 1960	4 8.31 in 2011	4 0.34 in 2025
73.4 in 1948	5 62.5 in 1968	5 7.56 in 2010	5 0.38 in 2006
6 73.0 in 2026	6 62.9 in 1981	6 7.19 in 1998	6 0.41 in 2021
7 72.8 in 2012	62.9 in 1941	7 7.16 in 1970	7 0.48 in 2002
8 72.5 in 2022	8 63.5 in 1996	8 6.93 in 1983	8 0.57 in 1945
72.5 in 2003	9 63.6 in 1983	9 6.60 in 1942	9 0.58 in 2018
10 72.0 in 2023	10 64.0 in 1947	10 6.55 in 1969	0.58 in 2017
72.0 in 1977			...
			25 1.41 in 2026

Normal Temperature for March at GIF = 69.1°

Normal Rainfall for March at GIF = 3.04 inches

BARTOW (Records began in June 1892):

Warmest Marches	Coollest Marches	Wettest Marches	Driest Marches
1 76.1 in 2015	1 60.8 in 1914	1 11.53 in 1959	1 0.00 in 2020
2 74.6 in 1903	2 61.5 in 1969	2 10.25 in 1987	2 0.02 in 1908
3 74.0 in 1997	3 62.3 in 2010	3 8.99 in 1960	3 0.05 in 1945
4 73.3 in 2003	4 62.5 in 1901	4 8.57 in 1944	4 0.07 in 2023
5 73.2 in 1948	5 62.7 in 1947	5 8.12 in 2001	5 0.10 in 2006
6 72.6 in 2012	6 62.9 in 1960	6 8.10 in 1947	6 0.12 in 2025
7 72.5 in 1945	7 63.5 in 1996	7 7.72 in 1930	7 0.27 in 2021
72.5 in 1907	63.5 in 1968	8 7.28 in 2010	8 0.36 in 2002
72.5 in 1897	9 63.9 in 2018	9 7.11 in 1970	9 0.41 in 1999
10 72.3 in 2020	10 64.0 in 1983	10 7.00 in 1983	10 0.45 in 2007
11 71.7 in 2026	
		75 2.00 in 2026	59 2.00 in 2026

Normal Temperature for March at BARF1 = 67.7°
Normal Rainfall for March at BARF1 = 2.84 inches

SARASOTA-BRADENTON AREA (Records began in January 1911):

Warmest Marches	Coollest Marches	Wettest Marches	Driest Marches
1 73.1 in 2020	1 57.0 in 1915	1 11.10 in 1987	1 Trace in 1939
2 73.0 in 2012	2 59.3 in 1931	2 10.77 in 2001	2 0.10 in 1945
3 72.9 in 2026	3 60.4 in 2010	3 10.60 in 1958	3 0.18 in 2023
4 72.6 in 1997	4 60.7 in 1969	4 8.81 in 1959	4 0.21 in 1949
71.9 in 2024	5 60.8 in 2013	5 8.63 in 1983	5 0.26 in 1956
71.9 in 2003	6 61.7 in 1924	6 8.49 in 2011	6 0.28 in 2007
71.9 in 1945	61.7 in 1914	7 8.16 in 1998	7 0.34 in 1935
8 71.7 in 2022	8 62.0 in 1941	8 7.42 in 1982	8 0.37 in 1976
9 71.6 in 2023	62.0 in 1916	9 7.37 in 1969	9 0.44 in 1917
10 71.5 in 2015	10 62.6 in 1968	10 7.10 in 1970	10 0.47 in 2004
	
		64 1.87 in 2026	52 1.87 in 2026

Normal Temperature for March at SRQ = 68.1°
Normal Rainfall for March at SRQ = 2.85 inches

VENICE (Records began in April 1955):

Warmest Marches	Coollest Marches	Wettest Marches	Driest Marches
1 74.4 in 1997	1 61.6 in 1969	1 11.21 in 1987	1 0.00 in 2020
2 74.0 in 2012	2 62.8 in 2013	2 9.57 in 1983	2 0.05 in 2023
3 73.8 in 2003	3 62.9 in 1960	3 9.38 in 1998	3 0.10 in 1956
4 72.5 in 2023	4 63.2 in 1968	4 8.83 in 2010	4 0.14 in 2009
5 72.2 in 2015	5 63.3 in 1962	5 8.05 in 1970	5 0.19 in 1971
6 72.1 in 2022	6 63.4 in 2010	6 7.74 in 1959	6 0.33 in 1977
7 72.0 in 2024	63.4 in 1981	7 7.45 in 2011	7 0.36 in 2006
8 71.7 in 2020	8 63.9 in 1978	8 7.41 in 2001	8 0.39 in 1967
9 71.1 in 2026	9 64.3 in 1996	9 7.10 in 1969	9 0.40 in 1974
10 70.8 in 2016	64.3 in 1988	10 6.60 in 1958	10 0.53 in 2004
70.8 in 2000	64.3 in 1958
		42 1.61 in 2026	30 1.61 in 2026

Normal Temperature for March at VNCF1 = 67.7°

Normal Rainfall for March at VNCF1 = 2.97 inches

MYAKKA RIVER STATE PARK (Temperature records began in March 1956
and Rainfall records began in Sep 1943):

Warmest Marches	Coollest Marches	Wettest Marches	Driest Marches
1 74.5 in 2003	1 60.5 in 2013	1 12.88 in 1987	1 0.08 in 1956
2 74.2 in 1997	2 61.4 in 2010	2 12.24 in 1998	2 0.13 in 2006
3 72.6 in 2015	3 62.4 in 1960	3 9.74 in 1969	3 0.16 in 1945
4 71.9 in 2012	4 63.7 in 1971	4 8.80 in 1959	4 0.18 in 2023
5 71.6 in 1977	5 64.4 in 1996	5 8.21 in 1958	5 0.23 in 2020
6 71.3 in 2016	64.4 in 1959	6 7.81 in 1983	0.23 in 1966
71.3 in 1976	7 64.8 in 1958	7 7.54 in 2010	7 0.29 in 2002
8 71.2 in 1992	8 65.2 in 1981	8 7.51 in 2011	0.29 in 1977
9 71.0 in 1982	9 65.4 in 2018	9 7.35 in 2001	9 0.41 in 1953
10 70.6 in 2026	10 65.7 in 1962	10 7.04 in 1947	10 0.42 in 1949
	65.7 in 1957	...	
		26 4.13 in 2026	

Normal Temperature for March at MKCF1 = 67.9°

Normal Rainfall for March at MKCF1 = 3.00 inches

WAUCHULA (Records began in January 1933):

Warmest Marches	Coollest Marches	Wettest Marches	Driest Marches
1 72.9 in 1948	1 57.7 in 2013	1 12.14 in 1998	1 0.00 in 2020
2 72.6 in 2003	2 61.3 in 1969	2 9.22 in 1959	0.00 in 2002
3 72.0 in 1974	3 62.3 in 2018	3 7.72 in 1958	3 0.08 in 1967
72.0 in 1945	4 62.5 in 1996	4 7.03 in 1987	4 0.12 in 2023
5 71.7 in 1938	5 62.7 in 1960	5 6.98 in 2001	5 0.18 in 1945
6 71.6 in 1939	6 63.4 in 1947	6 6.85 in 1965	6 0.20 in 1935
7 71.5 in 1935	7 63.5 in 1999	7 6.76 in 1947	7 0.22 in 2012
8 71.2 in 1977	63.5 in 1968	8 6.55 in 1983	8 0.30 in 2006
9 70.9 in 2026	9 63.6 in 1941	9 6.53 in 1969	0.30 in 1974
70.9 in 1997	10 63.7 in 1983	10 5.80 in 1970	10 0.35 in 1976
70.9 in 1973	
		52 1.70 in 2026	39 1.70 in 2026
		1.70 in 1980	1.70 in 1980

Normal Temperature for March at WAUF1 = 66.2°

Normal Rainfall for March at WAUF1 = 2.99 inches

ARCHBOLD BIO STN (Records began in January 1969):

Warmest Marches	Coollest Marches	Wettest Marches	Driest Marches
1 73.1 in 2003	1 58.6 in 2010	1 10.20 in 2010	1 0.05 in 2020
2 72.6 in 1997	2 58.8 in 2013	2 8.85 in 1970	0.05 in 1974
3 72.3 in 2015	3 61.1 in 1969	3 7.52 in 2003	3 0.06 in 2002
4 71.0 in 2026	4 62.2 in 1996	4 7.43 in 1969	4 0.22 in 2004
71.0 in 2024	62.2 in 1983	5 6.61 in 1987	5 0.50 in 2023
6 70.8 in 2022	6 62.9 in 2018	6 6.52 in 1982	6 0.66 in 2007
7 70.6 in 2016	7 63.2 in 1999	7 6.42 in 1984	7 0.76 in 1999
70.6 in 1977	8 63.3 in 1981	8 6.21 in 1988	8 0.78 in 1972
70.6 in 1974	9 63.8 in 1998	9 6.03 in 1986	9 0.83 in 2021
10 70.2 in 2012	10 63.9 in 1971	10 5.74 in 1993	10 0.87 in 2006
		...	
		24 3.02 in 2026	

Normal Temperature for March at ACHF1 = 67.1°

Normal Rainfall for March at ACHF1 = 2.87 inches

PUNTA GORDA AREA (Records began in May 1914):

Warmest Marches	Coollest Marches	Wettest Marches	Driest Marches
1 74.9 in 1948	1 57.9 in 1915	1 9.91 in 1947	1 0.00 in 1956
2 74.8 in 1945	2 62.0 in 2010	2 9.26 in 1970	2 Trace in 2020
3 73.7 in 1997	3 62.1 in 1916	3 8.71 in 2010	Trace in 1920
4 73.5 in 2024	4 62.3 in 1969	4 8.18 in 1987	4 0.09 in 2007
5 73.0 in 1953	62.3 in 1931	5 7.64 in 1930	5 0.10 in 1945
6 72.9 in 2003	6 62.4 in 2013	6 7.23 in 1960	0.10 in 1935
7 72.5 in 2023	7 63.5 in 1941	7 6.43 in 1958	7 0.15 in 1967
8 72.4 in 2015	8 64.2 in 1968	8 6.34 in 1969	8 0.16 in 1938
9 72.3 in 2026	9 64.3 in 1924	9 6.14 in 1983	9 0.21 in 1923
72.3 in 1944	10 64.7 in 1971	10 5.84 in 1959	10 0.28 in 2006
72.3 in 1968		...	
		16 5.20 in 2026	
		5.20 in 2001	
		5.20 in 1940	

Normal Temperature for March at PGD = 68.5°

Normal Rainfall for March at PGD = 2.28 inches

FORT MYERS AREA (Records began in January 1902):

Warmest Marches	Coollest Marches	Wettest Marches	Driest Marches
1 75.9 in 1997	1 61.1 in 1915	1 18.58 in 1970	1 0.00 in 1935
2 75.8 in 2022	2 62.4 in 1931	2 10.31 in 1958	2 0.02 in 2020
3 75.4 in 2020	3 63.0 in 2010	3 8.94 in 1947	3 0.03 in 1974
4 75.3 in 2023	4 63.4 in 1969	4 7.78 in 1903	4 0.04 in 1939
5 74.8 in 2003	5 63.7 in 1941	5 7.41 in 1983	5 0.05 in 1956
6 74.6 in 2015	6 64.3 in 2013	6 7.21 in 2010	6 0.08 in 1907
7 74.4 in 1948	7 64.4 in 1914	7 6.88 in 1941	7 0.09 in 1977
8 74.3 in 2026	8 64.5 in 1960	8 6.64 in 1931	8 0.10 in 2023
74.3 in 2012	9 64.6 in 1968	9 6.59 in 2005	0.10 in 1945
10 73.6 in 2024	10 65.0 in 1926	10 6.38 in 1984	10 0.13 in 2007
	
		51 2.02 in 2026	75 2.02 in 2026

Normal Temperature for March at FMY = 70.3°

Normal Rainfall for March at FMY = 2.07 inches

For more Climate information visit our web site at the following link:
<https://www.weather.gov/tampabay> and then go to the Climate and Past
Weather drop down menu above the graphical forecast images.