



NOAA - National Weather Service

Tampa Bay Area

2525 14th Avenue SE, Ruskin, Florida 33570

813-645-2323 <http://weather.gov/tampabay>

Record Rainfall In May 2018 At Several Locations Across West Central And Southwest Florida

The big story this May was the rainfall with six of the official NWS locations setting new records for the month and several others in the Top Ten Wettest.

MAY RAINFALL (inches):

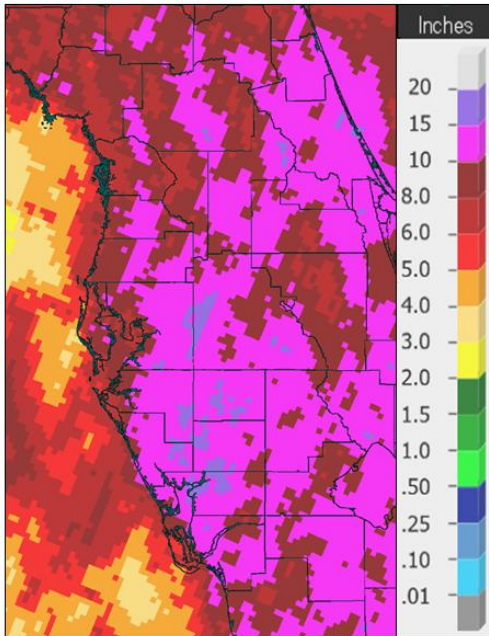
Location	Rank	May 2018 Total Rain	Normal May Rain	Departure fm Normal	Records Began
Lakeland	1st	19.19	3.36	+15.83	1915
Punta Gorda Area	1st	15.98	2.60	+13.38	1914
Wauchula 2 N	1st	13.94	3.09	+10.85	1933
*Archbold Bio Stn	1st	13.83	3.41	+10.42	1969
*Venice	1st	12.95	2.27	+10.68	1955
Fort Myers Area	1st	12.77	2.65	+10.12	1902
Plant City	2nd	14.27	3.38	+10.89	1893
Arcadia	2nd	12.63	3.57	+9.06	1899
St Petersburg Area	2nd	9.68	2.21	+7.47	1914
Brooksville Area	3rd	12.25	2.95	+9.30	1892
Inverness 3 SE	3rd	10.61	2.67	+7.94	1948
St Leo	5th	10.06	2.78	+7.28	1895
Tampa Area	6th	7.73	2.10	+5.63	1890
Winter Haven Area	7th	7.58	2.90	+4.68	1941
Chiefland 5 ESE	7th	6.72	2.29	+4.43	1956
Bartow	9th	9.46	2.78	+6.68	1892
Tarpon Springs	9th	6.79	2.02	+4.77	1892
Sarasota-Bradenton Area	10th	6.97	2.21	+4.76	1911

SPRING (MARCH/APRIL/MAY) RAINFALL (inches):

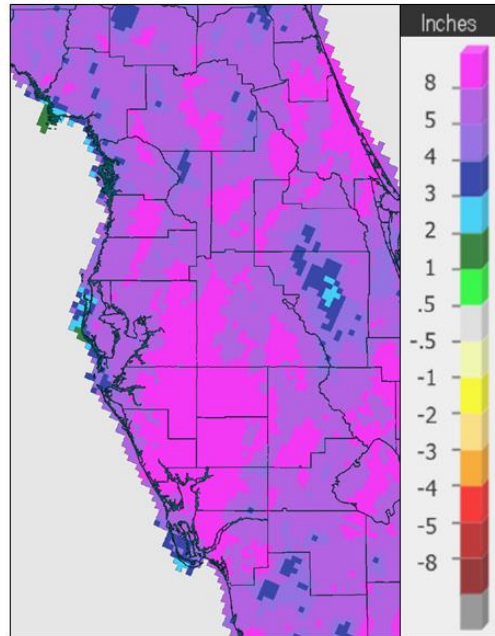
Location	Rank	Spring 2018 Total Rain	Normal Spring Rain	Departure fm Normal	Records Began
*Archbold Bio Stn	1st	18.11	9.43	+8.68	1969
Lakeland	2nd	22.52	9.92	+12.60	1915
Punta Gorda Area	3rd	17.66	8.34	+9.32	1914
Wauchula 2 N	4th	17.01	9.62	+7.39	1933
*Venice	5th	15.72	8.56	+7.16	1955
Inverness 3 SE	6th	16.26	9.28	+6.98	1948
Brooksville Area	7th	18.83	9.21	+9.62	1892
Arcadia	7th	16.96	9.30	+7.66	1899
Chiefland 5 ESE	8th	16.64	10.00	+6.64	1956
Fort Myers Area	9th	14.26	7.71	+6.55	1902
St Leo	10th	17.99	9.55	+8.44	1895

* There are a few days in May not available yet for these sites, so the May and Spring rainfall amounts will likely be higher.

May Rainfall (inches)

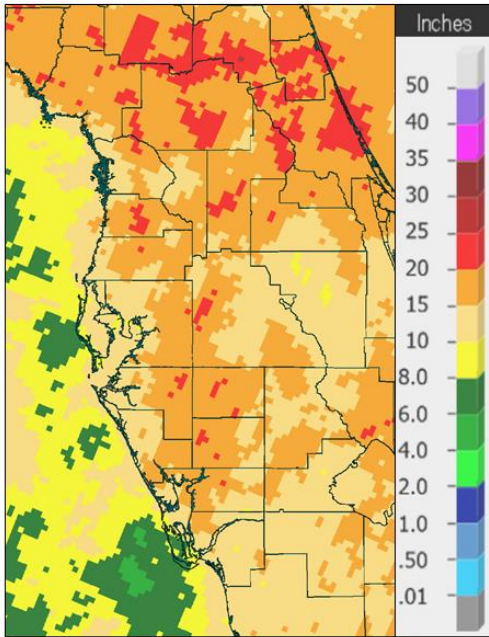


May 2018

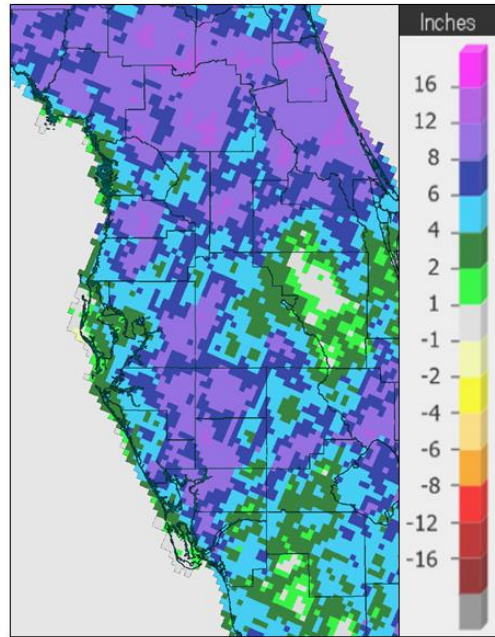


Departure from Normal

Spring Rainfall (inches)



Spring 2018



Departure from Normal

Following are tables of the Top Ten Warmest, Coolest, Driest, and Wettest Mays and Springs at some official NWS locations, which includes the average/total this May and Spring 2018 where available, and the 1981-2010 Normal (average) temperature and rainfall. We also saw many more days than normal with measureable rainfall (≥ 0.01 inch) this May at many locations and the Top Five Number of Days with measureable rainfall in May are included.

Chiefland 5 ESE (Records began July 1956):

Warmest Mays	Coolest Mays	Wettest Mays	Driest Mays
1 78.5 in 1991	1 72.3 in 1992	1 13.14 in 1976	1 0.00 in 2001
2 77.2 in 2017	72.5 in 2013	2 7.50 in 2010	2 0.05 in 2000
77.2 in 1959	72.5 in 2005	3 6.99 in 1959	3 0.23 in 2008
4 77.0 in 1995	72.5 in 1988	4 6.93 in 1966	4 0.26 in 1965
5 76.9 in 2015	5 72.6 in 1967	5 6.87 in 2014	5 0.62 in 1985
76.9 in 1975	72.6 in 1960	6 6.82 in 1969	6 0.68 in 1994
7 76.7 in 2012	7 72.8 in 2007	7 6.72 in 2018	7 0.76 in 2007
8 76.6 in 1990	72.8 in 2006	8 6.65 in 2005	8 0.82 in 1998
9 76.5 in 2018	9 72.9 in 1971	9 5.99 in 1991	0.82 in 1988
76.5 in 1962	10 73.0 in 2001	10 5.72 in 1980	10 0.95 in 1960

Normal May Temp at CHIF1 = 73.8°

Normal May Rain at CHIF1 = 2.29 in.

Warmest Springs	Coolest Springs	Wettest Springs	Driest Springs
1 73.4 in 2015	1 65.8 in 2005	1 24.94 in 1959	1 2.69 in 2007
2 72.0 in 1991	2 66.0 in 1969	2 23.30 in 1982	2 2.92 in 2000
3 71.7 in 2012	3 66.4 in 1960	3 21.65 in 1991	3 3.71 in 2006
4 71.3 in 2017	4 66.5 in 2013	4 19.46 in 2014	4 4.66 in 2002
5 70.8 in 2002	5 66.8 in 1993	5 19.45 in 1957	5 4.71 in 1989
6 70.5 in 2003	66.8 in 1971	6 19.41 in 2005	6 4.77 in 2004
7 70.4 in 1995	7 66.9 in 1966	7 18.33 in 1996	7 5.29 in 2017
8 70.3 in 1997	8 67.0 in 1996	8 16.64 in 2018	8 5.46 in 1994
9 70.2 in 1989	9 67.2 in 2001	9 16.28 in 1983	9 5.75 in 1998
70.2 in 1982	67.2 in 1962	10 16.23 in 1976	5.75 in 1967
...	...		
28 69.0 in 2018	27 69.0 in 2018		
in 1976	in 1976		
in 1972	in 1972		

Normal Spring Temp at CHIF1 = 67.7°

Normal Spring Rain at CHIF1 = 10.00 in

Number of Days with Rainfall ≥ 0.01 inch in May (Normal = 6 days)

1 18 days in 1991
2 14 days in 1966
3 13 days in 1976
4 12 days in 1957
5 10 days in 2018 , 1999, 1996, and 1959

Inverness 3 SE (Records began July 1948):

Warmest Mays	Coollest Mays	Wettest Mays	Driest Mays
1 80.0 in 1953	1 71.6 in 1992	1 11.97 in 1976	1 0.04 in 2008
2 79.7 in 2010	2 72.3 in 1988	2 11.48 in 2009	2 0.20 in 2000
3 79.1 in 1975	3 72.6 in 1993	3 10.61 in 2018	3 0.40 in 1965
4 78.7 in 1962	4 73.4 in 2005	4 10.59 in 1959	4 0.42 in 1994
5 78.2 in 1991	5 73.6 in 2006	5 8.79 in 1979	5 0.49 in 1998
6 78.1 in 2015	6 73.7 in 1997	6 8.11 in 2012	6 0.54 in 2007
78.1 in 1959	7 73.9 in 2001	7 7.71 in 2014	7 0.74 in 1997
8 78.0 in 1955	8 74.0 in 2007	8 7.33 in 1984	0.74 in 1977
9 77.9 in 2012	74.0 in 1999	9 7.27 in 1952	9 0.78 in 2001
77.9 in 1967	10 74.2 in 1982	10 6.92 in 1982	10 1.09 in 2011
	74.2 in 1976		
	12 74.3 in 2018		

Normal May Temp at INVf1 = 75.5° Normal May Rain at INVf1 = 2.67 in.

Warmest Springs	Coollest Springs	Wettest Springs	Driest Springs
1 74.0 in 2015	1 66.3 in 1993	1 24.95 in 1959	1 1.96 in 1967
2 73.7 in 1953	2 66.9 in 1992	2 21.14 in 1960	2 2.76 in 1977
3 73.5 in 1967	3 67.1 in 1996	3 20.75 in 1982	3 3.22 in 2000
4 73.1 in 1963	4 67.2 in 1988	4 17.36 in 2014	4 3.60 in 1994
5 72.9 in 2012	5 67.8 in 2018	5 17.22 in 1991	5 4.03 in 2013
6 72.5 in 1965	6 68.1 in 2001	6 16.26 in 2018	6 4.05 in 2007
7 72.2 in 1974	7 68.3 in 2007	7 15.78 in 1987	7 4.47 in 2004
8 72.1 in 2002	8 68.7 in 2004	15.78 in 1976	8 4.63 in 1955
72.1 in 1991	68.7 in 1999	9 15.34 in 1958	9 4.67 in 1999
72.1 in 1954	10 69.1 in 2006	10 14.19 in 1952	10 4.68 in 2006

Normal Spring Temp at INVf1 = 69.2° Normal Spring Rain at INVf1 = 9.28 in.

Number of Days with Rainfall >= 0.01 inch in May (Normal = 6 days)

- 1 17 days in 2018** and 1976
- 3 14 days in 2009
- 4 12 days in 1975, 1972, 1966, 1959, 1957, and 1952

Bushnell 1 E (Records began July 1948) :

Warmest Mays	Coollest Mays	Wettest Mays	Driest Mays
1 80.1 in 1995	1 68.3 in 1983	1 11.49 in 1976	1 0.21 in 1953
2 78.8 in 1953	2 72.4 in 1988	2 11.27 in 2009	2 0.24 in 2008
3 77.9 in 1996	3 72.8 in 2013	3 9.75 in 1957	3 0.35 in 1990
77.9 in 1975	4 73.6 in 2007	4 8.09 in 1968	4 0.38 in 2000
5 77.8 in 1959	5 73.7 in 1954	5 7.57 in 1966	5 0.54 in 1965
6 77.7 in 2000	6 74.0 in 1971	6 7.54 in 1950	6 0.65 in 1983
77.7 in 1990	7 74.1 in 1981	7 6.81 in 1979	7 0.71 in 1951
77.7 in 1962	8 74.2 in 1976	8 6.59 in 1962	8 0.76 in 2007
9 77.2 in 1956	74.2 in 1951	9 6.33 in 2014	9 0.96 in 1985
77.2 in 1955	10 74.3 in 2014	10 6.29 in 1974	10 0.99 in 2001
	74.3 in 1960		

Avg Temp for May 2018 Not Avail Yet
Normal May Temp at BSHF1 = 75.6°

Rain Total for May 2018 Not Avail Yet
Normal May Rain at BSHF1 = 3.79 in.

Warmest Springs	Coollest Springs	Wettest Springs	Driest Springs
1 73.5 in 2015	1 67.2 in 2013	1 23.70 in 1959	1 2.36 in 2000
2 72.5 in 1975	2 68.3 in 1971	2 21.10 in 1960	2 3.23 in 1990
3 72.0 in 2012	3 68.6 in 1987	3 20.90 in 1982	3 3.44 in 1967
72.0 in 1955	68.6 in 1986	4 20.05 in 1957	4 3.76 in 1965
5 71.9 in 1974	68.6 in 1966	5 19.77 in 1991	5 3.94 in 1999
6 71.6 in 1982	6 68.7 in 2014	6 16.67 in 1983	6 4.22 in 1961
71.6 in 1967	7 68.9 in 1969	7 16.27 in 2014	7 4.43 in 1977
8 71.4 in 1963	8 69.0 in 1960	8 16.06 in 1976	8 4.44 in 1981
9 71.2 in 1964	9 69.1 in 1981	9 15.03 in 1987	9 4.65 in 1985
10 71.1 in 1970	69.1 in 1951	10 14.92 in 1958	10 5.04 in 2004

Avg Temp for Spring 2018 Not Avail Yet
Normal Spring Temp at BSHF1 = 69.6°

Rain Total for Spring 2018 Not Avail Yet
Normal Spring Rain at BSHF1 = 10.06 in.

Number of Days with Rainfall >= 0.01 inch in May (Normal = 6 days)

- 1 14 days in 1976 and 1957
- 3 13 days in 1975, 1966, and 1959

May 2018 Total Not Available Yet

Brooksville Area (Records began January 1892) :

Warmest Mays	Coollest Mays	Wettest Mays	Driest Mays
1 80.7 in 1905	1 72.5 in 2005	1 16.27 in 1976	1 Trace in 1977
2 80.6 in 1927	2 72.8 in 1917	2 15.57 in 2009	2 0.19 in 1926
3 80.3 in 1933	3 73.1 in 2001	3 12.25 in 2018	3 0.23 in 1949
4 79.6 in 1995	4 73.2 in 1924	4 12.20 in 1923	4 0.29 in 2000
5 79.4 in 1899	73.2 in 1920	5 9.54 in 2014	5 0.45 in 1951
6 79.2 in 1929	6 73.4 in 1923	6 9.25 in 1906	6 0.47 in 1948
7 79.1 in 1962	7 73.7 in 1925	7 9.15 in 1912	7 0.57 in 1908
8 79.0 in 1975	8 73.8 in 2006	8 8.71 in 1921	8 0.60 in 1899
79.0 in 1902	73.8 in 1954	9 8.18 in 1957	9 0.68 in 1910
10 78.7 in 1953	10 73.9 in 2013	10 7.92 in 1919	10 0.70 in 1927
78.7 in 1935			
...	...		
70 75.5 in 2018	37 75.5 in 2018		
in 2014	in 2014		
in 2009	in 2009		
in 1904	in 1904		

Normal May Temp at BKV = 74.7°

Normal May Rain at BKV = 2.95 in.

Warmest Springs	Coollest Springs	Wettest Springs	Driest Springs
1 75.2 in 1929	1 66.1 in 2005	1 22.97 in 1959	1 1.57 in 2000
2 75.0 in 1945	2 67.5 in 1998	2 21.84 in 1960	2 2.20 in 1977
3 74.4 in 1927	3 67.6 in 2004	3 21.28 in 1991	2.20 in 1945
4 74.3 in 2015	67.6 in 1926	4 20.07 in 1928	4 2.35 in 2006
74.3 in 1935	67.6 in 1892	5 19.69 in 1976	5 2.58 in 1910
6 74.0 in 1948	6 67.8 in 1924	6 19.67 in 1900	6 3.25 in 1908
7 73.6 in 1938	7 68.0 in 2010	7 18.83 in 2018	7 3.56 in 1967
8 73.3 in 1994	8 68.2 in 2013	8 18.78 in 1982	8 3.82 in 1981
9 73.2 in 1905	9 68.3 in 2001	9 18.54 in 1987	9 3.89 in 1990
10 73.1 in 1967	68.3 in 1999	10 18.26 in 1957	10 4.12 in 1962
	11 68.6 in 1920		
	12 68.7 in 2018		

Normal Spring Temp at BKV = 68.7°

Normal Spring Rain at BKV = 9.21 in.

Number of Days with Rainfall >= 0.01 inch in May (Normal = 6 days)

1 20 days in 1919
2 19 days in 1923
3 18 days in 1991
4 17 days in 2018 and 2009

St. Leo (Records began April 1895):

Warmest Mays	Coolest Mays	Wettest Mays	Driest Mays
1 81.3 in 1995	1 71.7 in 1928	1 16.81 in 1979	1 0.03 in 2000
2 80.6 in 1899	2 72.3 in 1921	2 14.37 in 1923	2 0.15 in 2008
3 80.2 in 1953	3 73.0 in 1923	3 11.64 in 2009	3 0.17 in 1953
4 80.1 in 2003	4 73.1 in 1931	4 10.33 in 1976	4 0.28 in 1965
5 79.7 in 2000	5 73.6 in 1917	5 10.06 in 2018	5 0.40 in 1985
6 79.6 in 1896	6 73.7 in 1940	6 9.43 in 1919	6 0.51 in 1914
7 79.4 in 1962	7 73.8 in 1920	7 9.23 in 1963	7 0.78 in 2001
8 79.3 in 1985	8 73.9 in 1992	8 8.64 in 1905	8 0.84 in 1998
79.3 in 1902	9 74.1 in 1918	9 8.63 in 1957	9 0.86 in 1927
10 79.2 in 1975	10 74.2 in 1903	10 8.28 in 1921	10 0.92 in 1996
...	...		
89 75.9 in 2018	29 75.9 in 2018		
in 1973	in 1973		
in 1970	in 1970		
in 1960	in 1960		
in 1958	in 1958		
in 1945	in 1945		
in 1930	in 1930		
in 1909	in 1909		

Normal May Temp at STLf1 = 77.9° Normal May Rain at STLf1 = 2.78 in.

Warmest Springs	Coolest Springs	Wettest Springs	Driest Springs
1 75.2 in 1948	1 65.6 in 1931	1 24.63 in 1987	1 1.12 in 2000
2 74.9 in 2002	2 67.9 in 1915	2 21.67 in 1979	2 1.83 in 1967
3 74.8 in 1945	3 68.0 in 1928	3 21.01 in 1960	3 2.87 in 1898
4 74.7 in 2003	4 68.5 in 1930	4 20.57 in 1900	4 3.20 in 1904
5 74.6 in 2015	5 69.0 in 1940	5 20.48 in 1959	5 3.32 in 1977
6 74.5 in 1908	6 69.2 in 1916	6 20.01 in 1953	6 3.96 in 1999
7 74.4 in 1995	7 69.3 in 2013	7 19.13 in 1991	7 4.03 in 1908
8 74.2 in 1953	69.3 in 1971	8 18.77 in 1928	8 4.10 in 1914
9 74.1 in 1994	69.3 in 1969	9 18.34 in 1957	9 4.19 in 1910
10 73.9 in 2000	10 69.4 in 1992	10 17.99 in 2018	10 4.46 in 2006
73.9 in 1991	69.4 in 1926		
73.9 in 1975	69.4 in 1920		
...	...		
93 70.4 in 2018	27 70.4 in 2018		
in 1996	in 1996		
in 1942	in 1942		
in 1906	in 1906		

Normal Spring Temp at STLf1 = 72.4° Normal Spring Rain at STLf1 = 9.55 in.

Number of Days with Rainfall >= 0.01 inch in May (Normal = 6 days)

1 21 days in 1923	
2 19 days in 1991 and 1919	
4 16 days in 1976 and 1905	15 days in 2018

Tarpon Springs (Records began January 1892) :

Warmest Mays	Coollest Mays	Wettest Mays	Driest Mays
1 82.1 in 1995	1 71.7 in 1939	1 15.17 in 1979	1 0.00 in 2001
2 80.6 in 1991	2 72.6 in 1897	2 10.14 in 1991	0.00 in 2000
3 80.3 in 1933	3 72.8 in 1917	3 10.13 in 1976	3 Trace in 1927
4 80.0 in 1996	4 73.6 in 1894	4 9.38 in 1946	4 0.01 in 2007
5 79.8 in 2010	5 74.0 in 1928	5 8.18 in 1921	5 0.03 in 1965
6 79.6 in 2003	6 74.1 in 1992	6 7.70 in 1969	6 0.11 in 1949
7 79.3 in 1953	74.1 in 1941	7 7.17 in 1957	7 0.13 in 1899
79.3 in 1943	74.1 in 1921	8 6.84 in 1915	8 0.14 in 1994
9 79.2 in 1994	74.1 in 1903	9 6.79 in 2018	9 0.15 in 1953
79.2 in 1990	74.1 in 1892	10 6.53 in 2012	10 0.23 in 1951
...	...		
33 77.7 in 2018	90 77.7 in 2018		
in 1902	in 1902		

Normal May Temp at TRPF1 = 76.6° Normal May Rain at TRPF1 = 2.02 in.

Warmest Springs	Coollest Springs	Wettest Springs	Driest Springs
1 75.5 in 1948	1 66.9 in 1940	1 22.38 in 1959	1 0.97 in 1898
2 75.4 in 2015	2 67.5 in 1915	2 20.20 in 1979	2 1.40 in 2000
3 75.0 in 1995	3 68.0 in 1960	3 19.83 in 1991	3 1.43 in 2006
75.0 in 1991	68.0 in 1931	4 18.91 in 1987	4 1.47 in 1967
5 74.9 in 1929	5 68.3 in 1971	5 18.30 in 1957	5 1.86 in 1908
6 74.8 in 1997	6 68.7 in 1916	6 18.26 in 1942	6 2.81 in 1990
7 74.4 in 1994	7 68.8 in 1969	7 17.99 in 1960	7 2.82 in 1977
74.4 in 1945	68.8 in 1941	8 16.73 in 1900	8 2.83 in 1945
9 74.0 in 2012	9 68.9 in 1900	9 15.71 in 1983	9 3.21 in 1927
74.0 in 1938	10 69.0 in 1906	10 15.58 in 1931	10 3.22 in 2017
74.0 in 1922			
...	
48 71.5 in 2018	70 71.5 in 2018	29 11.45 in 2018	98 11.45 in 2018
in 1934	in 1934		
in 1893	in 1893		

Normal Spring Temp at TRPF1 = 71.2° Normal Spring Rain at TRPF1 = 8.20 in.

Number of Days with Rainfall >= 0.01 inch in May (Normal = 5 days)

- 1 16 days in 2018** and 1991
- 3 14 days in 1946 and 1936
- 5 13 days in 1976 and 1959

Tampa Area (Records began April 1890):

Warmest Mays	Coollest Mays	Wettest Mays	Driest Mays
1 81.7 in 1995	1 73.8 in 1891	1 17.64 in 1979	1 Trace in 2001
2 81.5 in 1975	2 74.2 in 1992	2 9.41 in 1921	2 0.02 in 2000
3 81.2 in 1991	3 74.3 in 1928	3 9.11 in 2009	3 0.07 in 1994
4 81.0 in 2017	4 74.4 in 1982	4 8.54 in 2014	4 0.10 in 1992
5 80.9 in 2010	5 74.5 in 1897	5 8.13 in 1976	5 0.16 in 1941
6 80.7 in 2012	6 74.7 in 1940	6 7.73 in 2018	6 0.17 in 1973
7 80.5 in 2015	74.7 in 1917	7 7.55 in 1959	7 0.22 in 1985
80.5 in 1990	8 74.8 in 1921	8 7.21 in 1957	8 0.24 in 1989
9 80.3 in 2000	74.8 in 1903	9 6.92 in 1894	9 0.31 in 1940
10 80.0 in 2003	10 74.9 in 1923	10 6.88 in 1991	10 0.33 in 1897
...			
22 79.0 in 2018	108 79.0 in 2018		

Normal May Temp at TPA = 78.4° Normal May Rain at TPA = 2.10 in.

Warmest Springs	Coollest Springs	Wettest Springs	Driest Springs
1 77.1 in 2015	1 68.3 in 1915	1 25.67 in 1959	1 0.61 in 1898
2 76.6 in 2012	2 68.5 in 1931	2 20.78 in 1957	2 0.86 in 2000
3 76.0 in 2017	68.5 in 1901	3 20.62 in 1979	3 1.29 in 1967
4 75.4 in 1991	4 68.8 in 1969	4 19.91 in 1930	4 2.17 in 1945
75.4 in 1945	5 69.1 in 1971	5 17.54 in 1931	5 2.32 in 1977
6 75.3 in 2002	6 69.2 in 1993	6 15.26 in 1987	6 2.46 in 2006
7 74.9 in 2011	7 69.4 in 1992	7 14.45 in 1983	7 2.64 in 1999
8 74.8 in 2016	69.4 in 1926	8 14.38 in 2014	8 2.74 in 1989
9 74.7 in 1995	9 69.6 in 1983	9 14.31 in 1924	9 2.98 in 1985
74.7 in 1948	69.6 in 1940	10 13.73 in 1960	10 3.06 in 2017
	69.6 in 1916		
	69.6 in 1891		
...
31 73.2 in 2018	94 73.2 in 2018	33 10.24 in 2018	97 10.24 in 2018
in 1953	in 1953		
in 1946	in 1946		
in 1918	in 1918		
in 1907	in 1907		

Normal Spring Temp at TPA = 72.6° Normal Spring Rain at TPA = 7.16 in.

Number of Days with Rainfall >= 0.01 inch in May (Normal = 6 days)

1 16 days in 2009
2 15 days in 2018 and 1890
4 14 days in 1923 and 1919

St Petersburg Area (Records began August 1914):

Warmest Mays	Coolest Mays	Wettest Mays	Driest Mays
1 82.0 in 2010	1 75.3 in 1928	1 10.64 in 1959	1 0.00 in 1953
2 81.5 in 2015	75.3 in 1921	2 9.68 in 2018	2 Trace in 2007
3 81.3 in 1995	3 75.4 in 1992	3 9.21 in 1979	3 0.02 in 2000
4 81.2 in 1933	75.4 in 1917	4 8.17 in 1976	4 0.04 in 2001
5 80.9 in 2003	5 75.7 in 1940	5 7.85 in 1925	5 0.05 in 1941
80.9 in 1991	6 75.8 in 1954	6 7.16 in 1991	6 0.18 in 1945
7 80.8 in 1975	7 76.2 in 1920	7 7.11 in 1915	7 0.19 in 1973
80.8 in 1935	8 76.4 in 1993	8 7.05 in 1921	8 0.22 in 1992
9 80.4 in 2012	9 76.5 in 1988	9 6.99 in 2009	9 0.24 in 1994
10 80.3 in 2000	10 76.6 in 1960	10 6.08 in 1957	10 0.26 in 1965
	76.6 in 1951		
...	...		
60 78.4 in 2018	40 78.4 in 2018		
in 1950	in 1950		
in 1949	in 1949		
in 1947	in 1947		

Normal May Temp at SPG = 79.0°

Normal May Rain at SPG = 2.21 in.

Warmest Springs	Coolest Springs	Wettest Springs	Driest Springs
1 77.7 in 2015	1 69.5 in 1915	1 26.45 in 1959	1 0.88 in 1945
2 76.7 in 2012	2 70.1 in 1931	2 17.88 in 1957	2 1.42 in 2000
3 75.9 in 1948	3 70.2 in 1993	3 17.20 in 1930	3 1.53 in 2006
75.9 in 1935	70.2 in 1983	4 17.18 in 1931	4 1.73 in 1977
75.9 in 1929	5 70.7 in 1996	5 16.31 in 1987	5 2.48 in 1967
6 75.8 in 2002	70.7 in 1940	6 15.65 in 1982	6 2.73 in 2007
7 75.6 in 2011	70.7 in 1926	7 15.17 in 1960	7 2.84 in 1938
8 75.5 in 2003	8 70.8 in 1916	8 14.50 in 2003	8 2.85 in 1949
9 75.3 in 2016	9 71.0 in 1992	9 14.03 in 1991	9 2.88 in 1999
75.3 in 1975	10 71.1 in 1924	10 13.98 in 1958	10 2.96 in 2002
...
53 73.4 in 2018	44 73.4 in 2018	22 11.89 in 2018	83 11.89 in 2018
in 2007	in 2007		
in 1956	in 1956		
in 1936	in 1936		
in 1925	in 1925		

Normal Spring Temp at SPG = 73.3°

Normal Spring Rain at SPG = 8.23 in.

Number of Days with Rainfall >= 0.01 inch in May (Normal = 5 days)

- 1 17 in 2018**
- 2 14 in 1959
- 3 12 in 1991 and 1939
- 5 11 in 1934 and 1919

Plant City (Records began February 1893):

Warmest Mays	Coolest Mays	Wettest Mays	Driest Mays
1 80.8 in 2017	1 71.3 in 1928	1 16.44 in 2009	1 0.01 in 2001
2 80.1 in 1915	2 71.9 in 1931	2 14.27 in 2018	2 0.14 in 2000
3 80.0 in 1995	3 72.0 in 1940	3 11.77 in 1991	3 0.29 in 1953
4 79.8 in 1975	4 72.4 in 1941	4 11.68 in 1979	4 0.50 in 1992
5 79.6 in 2010	5 73.0 in 1925	5 10.64 in 1923	5 0.58 in 1981
6 79.5 in 1991	6 73.6 in 1992	6 10.14 in 1957	6 0.62 in 2007
79.5 in 1953	7 73.9 in 1932	7 9.10 in 1905	7 0.67 in 1985
8 79.3 in 2012	8 74.0 in 1979	8 9.04 in 1976	0.67 in 1948
9 79.2 in 1990	74.0 in 1960	9 8.72 in 1907	9 0.72 in 1898
10 79.1 in 1916	10 74.1 in 1901	10 7.56 in 1900	10 0.75 in 1945
...	...		
29 77.6 in 2018	82 77.6 in 2018		
in 2011	in 2011		
in 1978	in 1978		
in 1974	in 1974		
in 1955	in 1955		

Normal May Temp at PLCF1 = 76.8°

Normal May Rain at PLCF1 = 3.38 in.

Warmest Springs	Coolest Springs	Wettest Springs	Driest Springs
1 76.2 in 2015	1 64.9 in 1931	1 26.28 in 1959	1 1.56 in 1898
2 75.1 in 1912	2 66.8 in 1901	2 23.68 in 1957	2 1.91 in 1977
3 75.0 in 2017	3 67.0 in 1932	3 20.67 in 1991	3 2.30 in 1981
4 74.8 in 2016	4 67.9 in 1940	4 19.68 in 1960	4 2.40 in 1908
5 74.7 in 2012	5 68.0 in 1941	5 19.42 in 1987	5 2.61 in 1945
6 74.3 in 1991	6 68.1 in 1930	6 19.38 in 1900	6 2.62 in 2017
74.3 in 1948	7 68.9 in 1925	7 19.25 in 1933	7 3.13 in 1902
74.3 in 1945	8 69.0 in 1942	8 18.59 in 2009	8 3.29 in 1949
9 74.1 in 2011	69.0 in 1928	9 18.56 in 1930	9 3.47 in 1985
74.1 in 1975	10 69.1 in 1924	10 18.30 in 1931	10 3.61 in 1967
74.1 in 1911		11 17.77 in 2010	
...	...	12 17.26 in 2018	
41 72.1 in 2018	63 72.1 in 2018		
in 2006	in 2006		
in 2000	in 2000		
in 1946	in 1946		
in 1938	in 1938		
in 1899	in 1899		
in 1897	in 1897		

Normal Spring Temp at PLCF1 = 71.4°

Normal Spring Rain at PLCF1 = 9.64 in.

Number of Days with Rainfall >= 0.01 inch in May (Normal = 6 days)

- 1 18 days in 1991
- 2 17 days in 2009
- 3 16 days in 1923
- 4 14 days in 2018**, 1976, 1968, 1959, and 1957

Lakeland (Records began January 1915):

Warmest Mays	Coollest Mays	Wettest Mays	Driest Mays
1 82.9 in 1995	1 73.4 in 1928	1 19.19 in 2018	1 0.13 in 1953
2 81.0 in 1996	2 74.0 in 2007	2 16.03 in 1979	2 0.37 in 2008
3 80.7 in 1991	3 74.4 in 1941	3 14.95 in 2009	3 0.44 in 2001
4 80.6 in 2010	74.4 in 1921	4 10.83 in 1923	4 0.50 in 1985
5 80.5 in 1990	5 74.8 in 1923	5 10.68 in 1991	5 0.55 in 2000
6 80.4 in 1994	6 75.1 in 1982	6 9.68 in 1957	0.55 in 1965
7 80.1 in 1933	75.1 in 1970	7 9.10 in 1968	7 0.63 in 1986
8 80.0 in 2017	8 75.2 in 1940	8 8.45 in 1922	8 0.89 in 1960
9 79.9 in 2015	9 75.2 in 1917	9 8.21 in 1921	9 0.92 in 1945
79.9 in 1935	10 75.4 in 1972	10 8.15 in 1924	10 0.96 in 1997
	75.4 in 1960		
	75.4 in 1931		
...	...		
50 77.3 in 2018	53 77.3 in 2018		
in 1932	in 1932		

Normal May Temp at LLDF1 = 77.1° Normal May Rain at LLDF1 = 3.36 in.

Warmest Springs	Coollest Springs	Wettest Springs	Driest Springs
1 76.3 in 2015	1 68.8 in 1931	1 24.87 in 1959	1 2.28 in 1945
2 76.0 in 1995	2 69.1 in 1941	2 22.52 in 2018	2 3.02 in 1981
3 75.8 in 1994	3 69.3 in 1915	3 21.98 in 1981	3 3.16 in 2000
4 75.7 in 1991	4 69.5 in 1960	4 21.14 in 1957	4 3.32 in 1967
75.7 in 1935	5 69.6 in 1969	5 21.03 in 1979	5 3.40 in 2017
6 75.0 in 2012	6 69.8 in 1925	6 20.64 in 1934	6 3.75 in 1977
75.0 in 1989	69.8 in 1983	7 18.56 in 1982	7 3.89 in 2006
8 74.8 in 1945	8 69.9 in 1971	8 18.46 in 1987	8 4.03 in 1985
74.8 in 1929	9 70.0 in 2007	9 17.86 in 1931	9 4.45 in 1949
10 74.7 in 1938	10 70.2 in 1924	17.86 in 1930	10 4.75 in 2012
...	...		
53 72.0 in 2018	79 72.0 in 2018		
in 2001	in 2001		
in 1981	in 1981		
in 1919	in 1919		

Normal Spring Temp at LLDF1 = 71.7° Normal Spring Rain at LLDF1 = 9.92 in.

Number of Days with Rainfall >= 0.01 inch in May (Normal = 7 days)

- 1 18 days in 2018**
- 2 17 days in 2009 and 1976
- 4 15 days in 1991
- 5 14 days in 1979 and 1959

Winter Haven Area (Records began March 1941) :

Warmest Mays	Coollest Mays	Wettest Mays	Driest Mays
1 81.6 in 1995	1 74.3 in 1972	1 12.72 in 1957	1 0.03 in 2000
2 80.9 in 2015	2 74.5 in 1960	2 10.36 in 1982	2 0.49 in 1945
80.9 in 2010	3 74.6 in 1982	3 8.54 in 1943	3 0.57 in 1941
80.9 in 2003	4 74.9 in 1954	4 8.26 in 2009	4 0.58 in 1965
5 80.2 in 1990	5 75.1 in 1941	5 8.11 in 1976	5 0.71 in 2004
80.2 in 1989	6 75.3 in 1983	6 7.63 in 1946	6 0.80 in 1951
80.2 in 1953	7 75.4 in 1971	7 7.58 in 2018	7 0.81 in 1985
8 80.0 in 2017	8 75.5 in 1988	8 6.81 in 1947	8 0.84 in 1949
80.0 in 2012	75.5 in 1968	9 6.75 in 1975	9 0.88 in 1969
10 79.9 in 2009	10 75.7 in 2007	10 6.54 in 2016	10 0.97 in 2015
79.9 in 1998	75.7 in 1977		
79.9 in 1991	75.7 in 1973		
...	...		
32 77.8 in 2018	39 77.8 in 2018		
in 1984	in 1984		
in 1957	in 1957		
in 1943	in 1943		

Normal May Temp at GIF = 77.7°

Normal May Rain at GIF = 2.90 in.

Warmest Springs	Coollest Springs	Wettest Springs	Driest Springs
1 77.7 in 2015	1 69.1 in 1983	1 23.21 in 1957	1 1.61 in 2000
2 76.1 in 1948	2 69.5 in 1960	2 21.81 in 1959	2 2.25 in 1945
3 75.9 in 1991	3 69.8 in 1971	3 20.49 in 1982	3 2.61 in 2017
75.9 in 1945	69.8 in 1969	4 20.32 in 1960	4 2.94 in 1981
5 75.7 in 1989	5 70.1 in 1941	5 18.23 in 1947	5 3.77 in 2007
6 75.5 in 2012	6 70.4 in 1987	6 15.16 in 1991	6 3.78 in 1967
7 75.3 in 2003	70.4 in 1968	7 14.42 in 2010	7 4.05 in 2015
75.3 in 2002	8 70.6 in 1993	8 13.59 in 1970	8 4.17 in 2006
9 75.0 in 1995	70.6 in 1981	13.59 in 1973	9 4.39 in 1965
75.0 in 1990	10 70.8 in 2013	10 13.44 in 1958	10 4.51 in 2004
	70.8 in 2005	11 13.16 in 1987	
	70.8 in 1988	12 12.88 in 2016	
...	...	13 12.80 in 1976	
29 72.8 in 2018	34 72.8 in 2018	14 12.58 in 2018	

Normal Spring Temp at GIF = 72.6°

Normal Spring Rain at GIF = 8.95 in.

Number of Days with Rainfall >= 0.01 inch in May (Normal = 7 days)

- 1 18 days in 2018**
- 2 17 days in 2009, 1976, and 1946
- 5 14 days in 1984, 1957, and 1943

Bartow (Records began January 1892):

Warmest Mays	Coollest Mays	Wettest Mays	Driest Mays
1 82.9 in 2015	1 73.3 in 1928	1 17.74 in 1923	1 0.02 in 1965
2 81.4 in 1995	2 73.5 in 1913	2 13.05 in 1979	2 0.25 in 1941
3 81.1 in 2014	3 73.8 in 1941	3 12.96 in 1957	3 0.36 in 1908
81.1 in 2003	4 74.3 in 1894	4 11.42 in 2009	4 0.40 in 1992
5 81.0 in 2012	5 74.5 in 1917	5 11.16 in 1905	5 0.45 in 1951
6 80.5 in 1905	6 74.6 in 1921	6 11.15 in 1930	6 0.72 in 1955
7 80.0 in 1990	7 74.7 in 1940	7 11.04 in 1976	7 0.75 in 1949
80.0 in 1975	74.7 in 1897	8 10.35 in 1921	8 0.87 in 1953
80.0 in 1953	9 74.8 in 1992	9 9.46 in 2018	9 0.91 in 2004
10 79.8 in 1991	10 74.9 in 1982	10 9.42 in 1932	10 0.95 in 1986
79.8 in 1933			
79.8 in 1899			
...	...		
81 76.3 in 2018	37 76.8 in 2018		
in 2007	in 2007		
in 1988	in 1988		

Normal May Temp at BARF1 = 78.1° Normal May Rain at BARF1 = 2.78 in.

Warmest Springs	Coollest Springs	Wettest Springs	Driest Springs
1 80.1 in 2015	1 67.8 in 1915	1 25.91 in 1959	1 2.34 in 1908
2 76.0 in 2003	2 68.2 in 1901	2 22.99 in 1930	2 2.48 in 1967
3 75.9 in 2012	3 69.3 in 1914	3 22.88 in 1957	3 2.55 in 2000
4 75.6 in 2014	4 69.6 in 1983	4 19.55 in 1934	4 3.27 in 1977
5 75.4 in 1908	5 70.1 in 1993	5 19.44 in 1923	5 3.53 in 1949
6 75.3 in 1945	6 70.5 in 1894	6 19.34 in 1905	3.53 in 1894
7 75.1 in 1991	70.5 in 1893	7 19.05 in 1947	7 3.55 in 2017
8 74.8 in 1995	8 70.6 in 1971	8 18.67 in 1991	8 3.57 in 1892
74.8 in 1948	70.6 in 1960	9 17.84 in 1979	9 3.77 in 1911
10 74.6 in 1975	70.6 in 1925	10 16.39 in 1937	10 3.82 in 1981
	70.6 in 1913
	70.6 in 1896	28 13.28 in 2018	99 13.28 in 2018
	13 70.8 in 1992		
	70.8 in 1910		
	15 70.9 in 2018		
	in 1979		

Normal Spring Temp at BARF1 = 72.9° Normal Spring Rain at BARF1 = 8.99 in.

Number of Days with Rainfall >= 0.01 inch in May (Normal = 6 days)

- 1 18 days in 1976
- 2 17 days in 1912
- 3 16 days in 2018**, 2009, 1991, 1946, and 1934

Sarasota-Bradenton Area (Records began January 1911):

Warmest Mays	Coollest Mays	Wettest Mays	Driest Mays
1 80.7 in 1995	1 71.8 in 1917	1 9.52 in 1996	1 0.00 in 1941
2 79.6 in 2010	2 72.9 in 1928	2 9.39 in 1991	2 Trace in 2007
3 79.5 in 1991	3 73.1 in 1940	3 9.34 in 1978	3 0.02 in 1953
79.5 in 1990	4 73.4 in 1911	4 9.26 in 1957	4 0.10 in 1951
5 79.4 in 2012	5 73.5 in 1931	5 9.05 in 1921	0.10 in 1945
6 78.9 in 2017	73.5 in 1921	6 8.56 in 1954	6 0.13 in 1973
7 78.7 in 2003	7 73.7 in 1960	7 8.18 in 1959	7 0.15 in 1992
8 78.3 in 2016	8 74.0 in 1924	8 7.52 in 1934	0.15 in 1952
78.3 in 1950	9 74.1 in 1926	9 7.05 in 2014	9 0.16 in 1967
78.3 in 1946	10 74.2 in 1992	10 6.97 in 2018	10 0.18 in 1994
...	74.2 in 1923		
26 77.4 in 2018	...		
in 1929	81 77.4 in 2018		
	in 1929		

Normal May Temp at SRQ = 76.4° Normal May Rain at SRQ = 2.21 in.

Warmest Springs	Coollest Springs	Wettest Springs	Driest Springs
1 75.2 in 2015	1 66.8 in 1931	1 25.80 in 1957	1 1.39 in 1967
2 75.1 in 2012	2 67.2 in 1915	2 17.97 in 1959	2 2.01 in 2006
3 74.4 in 2016	3 68.3 in 1916	3 17.92 in 1991	3 2.07 in 1977
4 74.3 in 1995	4 68.5 in 1940	4 16.60 in 1996	4 2.50 in 1945
5 74.0 in 1994	5 68.8 in 1941	5 16.55 in 1997	5 2.61 in 1981
6 73.9 in 2003	68.8 in 1926	6 15.97 in 1958	6 2.83 in 1974
73.9 in 2002	68.8 in 1924	7 15.17 in 1930	7 2.97 in 1956
8 73.8 in 1991	8 68.9 in 1913	8 14.97 in 1969	8 3.02 in 2007
9 73.7 in 1990	9 69.0 in 1983	9 14.76 in 2014	3.02 in 1949
73.7 in 1945	10 69.1 in 1971	10 14.20 in 1987	10 3.10 in 2000
...	
53 71.4 in 2018	48 71.4 in 2018	24 11.74 in 2018	
in 2004	in 2004		
in 1999	in 1999		
in 1943	in 1943		
in 1923	in 1923		

Normal Spring Temp at SRQ = 71.4° Normal Spring Rain at SRQ = 8.51 in.

Number of Days with Rainfall >= 0.01 inch in May (Normal = 6 days)

- 1 16 days in 2018**
- 2 15 days in 1959
- 3 14 days in 1957
- 4 13 days in 2009 and 1969

**Myakka River State Park (Temperature Records began March 1956/
Rainfall Records began September 1943):**

Warmest Mays	Coollest Mays	Wettest Mays	Driest Mays
1 81.3 in 1995	1 73.5 in 1960	1 12.81 in 1959	1 0.02 in 2007
2 80.1 in 2010	2 74.2 in 1992	2 9.17 in 2014	0.02 in 2000
3 79.8 in 2003	3 74.9 in 1988	3 8.85 in 1970	3 0.23 in 1985
4 79.4 in 1990	4 75.0 in 2001	4 7.95 in 1975	4 0.35 in 1953
5 79.3 in 1998	75.0 in 1993	5 7.92 in 2009	5 0.42 in 1945
6 79.2 in 1978	6 75.1 in 2013	6 7.73 in 2016	6 0.50 in 1955
7 79.0 in 1996	75.1 in 1963	7 7.55 in 1976	7 0.55 in 1994
8 78.9 in 2012	8 75.2 in 1972	8 6.02 in 1968	8 0.56 in 1973
78.9 in 1975	9 75.4 in 1970	9 5.59 in 1963	9 0.61 in 1951
10 78.7 in 2015	10 75.7 in 1977	10 5.57 in 1987	10 0.62 in 1949
	75.7 in 1961		

Avg Temp for May 2018 Not Avail Yet
Normal May Temp at MKCF1 = 77.1°

Rain Total for May 2018 Not Avail Yet
Normal May Rain at MKCF1 = 2.82 in.

Warmest Springs	Coollest Springs	Wettest Springs	Driest Springs
1 76.0 in 2015	1 69.1 in 1960	1 23.31 in 1959	1 1.43 in 2006
2 75.5 in 2003	2 69.8 in 1971	2 18.47 in 1987	2 1.83 in 1945
3 75.4 in 1995	69.8 in 1962	3 18.06 in 1957	3 3.01 in 1989
4 74.9 in 1997	4 70.0 in 2013	4 17.63 in 1993	4 3.44 in 1981
5 74.2 in 2002	5 70.4 in 1986	5 16.55 in 1998	5 3.56 in 1955
6 74.1 in 2012	6 70.5 in 1983	6 16.43 in 2014	6 3.80 in 2004
74.1 in 1982	70.5 in 1958	7 15.59 in 1969	7 4.05 in 1978
74.1 in 1975	8 70.7 in 2005	8 15.18 in 1970	8 4.12 in 1950
9 74.0 in 1990	70.7 in 1988	9 14.48 in 1982	9 4.16 in 1971
10 73.8 in 1994	10 70.8 in 1959	10 14.37 in 1954	10 4.37 in 1953

Avg Temp for Spring 2018 Not Avail Yet
Normal Spring Temp at MKCF1 = 72.1°

Rain Total for Spring 2018 Not Avail Yet
Normal Spring Rain at MKCF1 = 9.27 in.

Number of Days with Rainfall >= 0.01 inch in May (Normal = 5 days)

- 1 15 days in 2009
- 2 14 days in 1946
- 3 13 days in 2015, 1959, and 1957

May 2018 Total Not Available Yet

Venice (Records began May 1955):

Warmest Mays	Coollest Mays	Wettest Mays	Driest Mays
1 82.7 in 2010	1 72.9 in 1988	*1 12.95 in 2018	1 0.06 in 1994
2 81.8 in 1995	2 74.3 in 1960	2 8.57 in 1969	0.06 in 1989
3 81.3 in 2003	3 74.5 in 1981	3 7.73 in 2009	3 0.12 in 1995
4 80.8 in 2012	4 74.6 in 1980	4 7.70 in 1959	4 0.40 in 1972
5 79.8 in 2011	5 74.7 in 1977	5 6.41 in 1996	0.40 in 1967
6 78.9 in 1996	6 75.2 in 1973	6 5.86 in 1976	6 0.41 in 2007
7 78.8 in 1998	7 75.3 in 1963	7 5.61 in 1975	0.41 in 2001
8 78.7 in 2002	8 75.4 in 1983	8 5.13 in 1991	8 0.46 in 2008
9 78.6 in 2000	9 75.5 in 1970	9 5.12 in 2003	9 0.54 in 1999
10 78.5 in 1994	10 75.6 in 2005	10 4.98 in 1962	10 0.56 in 1973

Avg Temp thru May 30 = 77.0° *Rain Total through May 30 = 12.95 in.
 Normal May Temp at VNCF1 = 76.8° Normal May Rain at VNCF1 = 2.27 in.

Warmest Springs	Coollest Springs	Wettest Springs	Driest Springs
1 76.4 in 2012	1 68.8 in 1988	1 21.37 in 1957	1 0.79 in 1967
2 75.9 in 2003	2 69.3 in 1962	2 16.90 in 1959	2 1.87 in 1981
3 75.8 in 2015	3 69.5 in 1993	3 16.33 in 1969	3 1.94 in 1974
4 75.4 in 2011	4 69.7 in 1960	4 16.05 in 1984	4 2.58 in 1963
5 75.1 in 1995	5 69.8 in 1987	*5 15.72 in 2018	5 2.83 in 1971
6 74.9 in 1997	69.8 in 1983	6 15.10 in 1983	6 2.92 in 1977
7 74.7 in 2002	7 69.9 in 1986	7 14.79 in 1987	7 3.30 in 2006
8 74.5 in 1994	8 70.0 in 2005	8 13.99 in 1962	3.30 in 1989
9 73.6 in 2016	9 70.1 in 1981	9 13.92 in 1996	9 3.36 in 1979
73.6 in 2000	10 70.4 in 1971	10 13.86 in 1991	10 3.62 in 1999
	70.4 in 1958		

Avg Temp thru May 30 = 71.5° Rain Total through May 30 = 15.72 in.
 Normal Spring Temp at VNCF1 = 71.7° Normal Spring Rain at VNCF1 = 8.56 in.

Number of Days with Rainfall >= 0.01 inch in May (Normal = 5 days)

- 1 15 days in 1991
- 2 14 days in 2009 and 1956
- 4 13 days in 1996 and 1976

May 2018 Total thru the 30th = 17 days

Wauchula 2 N (Records began January 1933) :

Warmest Mays	Coollest Mays	Wettest Mays	Driest Mays
1 80.1 in 2009	1 73.0 in 1992	1 13.94 in 2018	1 0.00 in 2000
2 79.8 in 1975	2 73.1 in 2013	2 11.32 in 1954	2 0.01 in 1965
3 79.7 in 1995	3 74.1 in 2001	3 11.31 in 1957	3 0.29 in 1945
4 79.4 in 1990	4 74.3 in 1960	4 10.61 in 1963	4 0.30 in 2015
79.4 in 1933	74.3 in 1940	5 9.37 in 2009	5 0.43 in 1953
6 79.2 in 1935	6 74.4 in 2007	6 8.39 in 1976	6 0.48 in 2008
7 78.9 in 2008	74.4 in 1999	7 7.82 in 1968	7 0.55 in 1941
78.9 in 1991	8 74.5 in 1982	8 7.53 in 1934	8 0.56 in 1949
9 78.5 in 1946	9 74.6 in 1954	9 7.42 in 1972	9 0.65 in 1995
10 78.4 in 1978	10 74.7 in 2011	10 7.17 in 1939	10 0.70 in 2004
78.4 in 1967	74.7 in 1941		
...	...		
58 75.8 in 2018	24 75.8 in 2018		
in 1997	in 1997		

Normal May Temp at WAUF1 = 77.8°

Normal May Rain at WAUF1 = 3.09 in.

Warmest Springs	Coollest Springs	Wettest Springs	Driest Springs
1 75.0 in 1945	1 67.6 in 2013	1 21.37 in 1947	1 0.69 in 1945
2 74.8 in 1935	2 68.8 in 2005	2 20.73 in 1957	2 0.85 in 1967
3 74.6 in 1975	69.0 in 2004	3 18.24 in 1998	3 1.90 in 2006
74.6 in 1948	4 69.0 in 1993	4 17.01 in 2018	4 2.25 in 2000
5 74.4 in 1991	5 69.1 in 1996	5 16.98 in 1962	5 2.40 in 2004
6 74.1 in 2009	69.1 in 1983	6 16.65 in 1954	6 2.42 in 2015
74.1 in 1938	7 69.4 in 1960	7 15.78 in 1958	7 4.34 in 1981
8 74.0 in 2015	8 69.8 in 2018	8 15.60 in 1934	8 4.60 in 1974
74.0 in 1939	69.8 in 2007	9 15.14 in 1959	9 4.72 in 1949
10 73.8 in 1974	10 69.9 in 2014	10 14.19 in 1982	10 4.82 in 1946
	69.9 in 1950		

Normal Spring Temp at WAUF1 = 72.3°

Normal Spring Rain at WAUF1 = 9.62 in.

Number of Days with Rainfall >= 0.01 inch in May (Normal = 5 days)

- 1 19 days in 1976 and 1957
- 3 16 days in 2018** and 1934
- 5 15 days in 1959

Arcadia (Records began November 1899) :

Warmest Mays	Coollest Mays	Wettest Mays	Driest Mays
1 80.6 in 1912	1 73.5 in 1988	1 15.72 in 1987	1 0.01 in 1965
2 80.2 in 1991	2 73.9 in 1970	*2 12.63 in 2018	2 0.30 in 1941
80.2 in 1938	73.9 in 1940	3 11.71 in 1923	3 0.40 in 2000
4 79.6 in 1905	4 74.0 in 1931	4 9.57 in 1958	0.40 in 1989
5 79.2 in 1935	74.0 in 1928	5 9.47 in 1925	5 0.57 in 1902
79.2 in 1933	6 74.2 in 1960	6 9.08 in 1954	6 0.78 in 1953
79.2 in 1902	7 74.3 in 1941	7 8.19 in 1963	7 0.82 in 1940
8 79.0 in 1995	8 74.5 in 1982	8 7.99 in 1959	8 0.92 in 1983
9 78.9 in 2012	74.5 in 1977	9 7.88 in 1910	9 0.94 in 1927
78.9 in 2003	10 74.7 in 1989	10 7.84 in 1912	10 0.99 in 1917
78.9 in 1953	74.7 in 1926		
	74.7 in 1921		
...	...		
80 75.6 in 2018	26 75.6 in 2018		

Normal May Temp at ARCF1 = 76.4°

Normal May Rain at ARCF1 = 3.57 in.

Warmest Springs	Coollest Springs	Wettest Springs	Driest Springs
1 76.8 in 1912	1 67.8 in 1931	1 25.68 in 1987	1 2.32 in 1902
2 75.5 in 1908	2 69.1 in 2010	2 19.95 in 1982	2 2.66 in 2006
3 75.1 in 1945	3 69.2 in 1988	3 19.46 in 1958	3 2.70 in 1965
4 75.0 in 2015	69.2 in 1926	4 19.41 in 1947	4 3.31 in 2001
75.0 in 1929	5 69.4 in 1996	5 17.07 in 1957	5 3.36 in 1989
6 74.9 in 1948	69.4 in 1986	6 16.99 in 1930	6 3.38 in 1945
7 74.5 in 2003	7 69.6 in 1901	*7 16.96 in 2018	7 3.40 in 1949
74.5 in 1935	8 69.7 in 2013	8 16.25 in 1954	8 3.51 in 1917
9 74.3 in 1938	69.7 in 1987	9 16.17 in 1959	9 3.75 in 1938
10 74.1 in 1913	69.7 in 1971	10 15.44 in 1923	10 3.81 in 1977
	69.7 in 1960		
...	...		
82 70.3 in 2018	17 70.3 in 2018		
in 1989	in 1989		
in 1968	in 1968		

Normal Spring Temp at ARCF1 = 71.0°

Normal Spring Rain at ARCF1 = 9.30 in.

Number of Days with Rainfall >= 0.01 inch in May (Normal = 6 days)

1	20 days in 1923
2	18 days in 2018 and 1957
4	17 days in 1976 and 1912

Archbold Bio Stn (Records began January 1969):

Warmest Mays	Coollest Mays	Wettest Mays	Driest Mays
1 79.1 in 1991	1 71.2 in 1992	*1 13.83 in 2018	1 1.01 in 1983
2 79.0 in 1995	2 73.3 in 2013	2 7.61 in 1996	2 1.07 in 2015
3 78.5 in 2017	3 73.6 in 1988	3 7.23 in 2016	1.07 in 1993
4 78.2 in 2010	4 73.7 in 1993	4 7.00 in 1978	4 1.09 in 2005
78.2 in 1990	5 73.8 in 1982	5 6.97 in 1975	5 1.17 in 2000
6 78.0 in 1975	6 73.9 in 1983	6 6.96 in 1982	6 1.24 in 2007
7 77.3 in 2003	7 74.1 in 2005	7 6.75 in 2014	7 1.46 in 2006
8 77.2 in 2012	8 74.2 in 2006	8 6.53 in 1977	8 1.56 in 1986
77.2 in 2002	9 74.4 in 1977	9 6.52 in 1999	9 1.72 in 1990
10 77.0 in 1996	10 74.5 in 2007	10 5.87 in 1991	10 2.05 in 1995
	74.5 in 2001		
	74.5 in 1999		

Avg Temp thru May 28 = 75.5°
Normal May Temp at ACHF1 = 75.3°

*Rain Total through May 28 = 13.83 in.
Normal May Rain at ACHF1 = 3.41 in.

Warmest Springs	Coollest Springs	Wettest Springs	Driest Springs
1 75.3 in 2015	1 67.8 in 1983	*1 18.11 in 2018	1 2.36 in 2006
2 74.0 in 1991	2 68.2 in 1993	2 17.63 in 1982	2 3.56 in 1971
3 73.5 in 2003	3 68.4 in 2013	3 16.84 in 2010	3 4.08 in 2007
73.5 in 1995	4 68.5 in 1987	4 15.34 in 2003	4 4.22 in 1981
5 73.3 in 1975	5 68.6 in 1992	5 14.26 in 1984	5 4.85 in 1990
6 73.1 in 2017	6 68.7 in 2005	6 14.01 in 1970	6 4.93 in 2002
73.1 in 2002	68.7 in 1986	7 13.53 in 1996	7 4.96 in 2017
8 73.0 in 1997	8 69.1 in 1988	8 13.41 in 1969	8 5.09 in 2000
9 72.9 in 1974	9 69.3 in 2004	9 12.51 in 1991	9 6.60 in 2009
10 72.7 in 2016	10 69.4 in 1971	10 12.24 in 1973	10 6.85 in 1974

Avg Temp thru May 28 = 69.7°
Normal Spring Temp at ACHF1 = 70.4°

*Rain Total through May 28 = 18.11 in.
Normal Spring Rain at ACHF1 = 9.43 in.

Number of Days with Rainfall >= 0.01 inch in May (Normal = 8 days)

- 1 14 days in 2009 and 1996
- 3 13 days in 1984, 1979, and 1978

May 2018 Total thru the 28th = 15 days

Punta Gorda Area (Records began June 1914) :

Warmest Mays	Coollest Mays	Wettest Mays	Driest Mays
1 80.9 in 1953	1 74.0 in 1917	1 15.98 in 2018	1 0.01 in 1927
2 80.7 in 1946	2 74.1 in 1928	2 10.13 in 1946	2 0.07 in 1992
3 80.5 in 1995	3 74.9 in 1992	3 9.45 in 1991	3 0.40 in 1965
4 80.2 in 1991	4 75.0 in 1916	4 9.27 in 1959	4 0.41 in 2000
5 79.9 in 2012	5 75.1 in 1920	5 8.24 in 1968	5 0.42 in 2004
79.9 in 1933	6 75.2 in 2001	6 8.20 in 1963	6 0.45 in 1953
7 78.7 in 2010	75.2 in 1970	7 7.77 in 1972	7 0.54 in 2001
8 79.7 in 1962	75.2 in 1925	8 7.34 in 1979	0.54 in 1967
9 79.6 in 1956	9 75.6 in 1977	9 7.29 in 1923	9 0.66 in 1998
10 79.5 in 1935	75.6 in 1941	10 7.18 in 1932	0.66 in 1941
...	...		
40 77.9 in 2018	57 77.9 in 2018		

Normal May Temp at PGD = 77.4° Normal May Rain at PGD = 2.60 in.

Warmest Springs	Coollest Springs	Wettest Springs	Driest Springs
1 77.5 in 1945	1 68.3 in 1915	1 19.21 in 1957	1 0.69 in 1967
2 76.5 in 1948	2 68.8 in 1916	2 18.61 in 1947	2 1.20 in 2006
3 76.1 in 1953	3 69.4 in 1931	3 17.66 in 2018	3 1.82 in 2000
4 76.0 in 1946	4 70.2 in 1971	4 17.41 in 1930	4 2.10 in 1971
5 75.7 in 1944	5 70.5 in 1941	5 15.87 in 1970	5 2.14 in 1981
6 75.6 in 2015	6 70.8 in 2005	6 15.85 in 2010	6 2.24 in 2007
75.6 in 1991	7 70.9 in 1993	7 15.70 in 1959	7 2.27 in 1945
8 75.1 in 1994	70.9 in 1969	8 14.94 in 2003	8 3.31 in 1935
9 75.0 in 2012	9 71.1 in 2010	9 14.42 in 1931	9 3.45 in 1975
75.0 in 1929	71.1 in 2004	10 14.14 in 1991	10 3.55 in 1974
	71.1 in 1983		
...	...		
51 72.8 in 2018	44 72.8 in 2018		

Normal Spring Temp at PGD = 72.6° Normal Spring Rain at PGD = 8.34 in.

Number of Days with Rainfall >= 0.01 inch in May (Normal = 6 days)

- 1 18 days in 2018** and 1922
- 3 17 days in 2003
- 4 16 days in 2009 and 1991

Fort Myers Area (Records began January 1902) :

Warmest Mays	Coollest Mays	Wettest Mays	Driest Mays
1 82.0 in 1995	1 74.3 in 1917	1 12.77 in 2018	1 0.20 in 2001
2 81.2 in 2010	2 74.5 in 1941	2 10.32 in 1968	2 0.34 in 1994
3 81.1 in 2012	3 74.8 in 1921	3 8.73 in 1980	0.34 in 1962
4 80.8 in 1991	4 74.9 in 1928	4 8.49 in 1925	4 0.41 in 1953
5 80.7 in 1975	5 75.0 in 1970	8.49 in 1911	5 0.47 in 2004
6 80.6 in 2017	6 75.1 in 1903	6 8.48 in 1991	6 0.50 in 1964
7 80.5 in 2008	7 75.3 in 1940	7 8.42 in 1922	7 0.54 in 2010
80.5 in 2003	75.3 in 1931	8 8.05 in 1989	8 0.62 in 1988
9 80.4 in 1994	75.3 in 1918	9 7.97 in 1957	0.62 in 1983
80.4 in 1990	10 75.5 in 1925	10 7.82 in 1929	10 0.71 in 1903
80.4 in 1989			
...	...		
29 79.1 in 2018	87 79.1 in 2018		
in 1962	in 1962		
in 1943	in 1943		

Normal May Temp at FMY = 79.0° Normal May Rain at FMY = 2.65 in.

Warmest Springs	Coollest Springs	Wettest Springs	Driest Springs
1 77.9 in 2015	1 69.4 in 1931	1 24.94 in 1970	1 1.89 in 1945
2 77.0 in 2012	2 70.0 in 1915	2 18.71 in 1958	2 2.18 in 1967
3 76.9 in 1997	3 70.2 in 1941	3 18.23 in 1947	3 2.36 in 2006
4 76.6 in 1991	4 70.5 in 1983	4 17.77 in 1930	4 2.44 in 1902
5 76.4 in 2002	5 70.8 in 1960	5 16.85 in 1933	5 2.54 in 1974
6 76.3 in 2003	6 71.1 in 1971	6 15.70 in 1941	6 2.69 in 2001
7 76.2 in 2011	71.1 in 1916	7 15.39 in 1957	7 3.37 in 1953
76.2 in 1995	71.1 in 1910	8 14.62 in 1991	8 3.42 in 1964
76.2 in 1994	9 71.2 in 1940	9 14.26 in 2018	9 3.45 in 1927
10 76.0 in 1948	71.2 in 1926	10 13.84 in 1980	10 3.93 in 2017
...	...		
27 74.9 in 2018	89 74.9 in 2018		
in 1927	in 1927		

Normal Spring Temp at FMY = 74.3° Normal Spring Rain at FMY = 7.71 in.

Number of Days with Rainfall >= 0.01 inch in May (Normal = 7 days)

- 1 18 days in 1925 and 1923
- 3 17 days in 2018** and 1929
- 5 16 days in 1991, 1959, and 1922

For more Climate information visit our web site at the following link:
<http://www.weather.gov/tampabay> and then go to the Climate and Past Weather drop down menu above the graphical forecast images.