



NOAA - National Weather Service

Tampa Bay Area

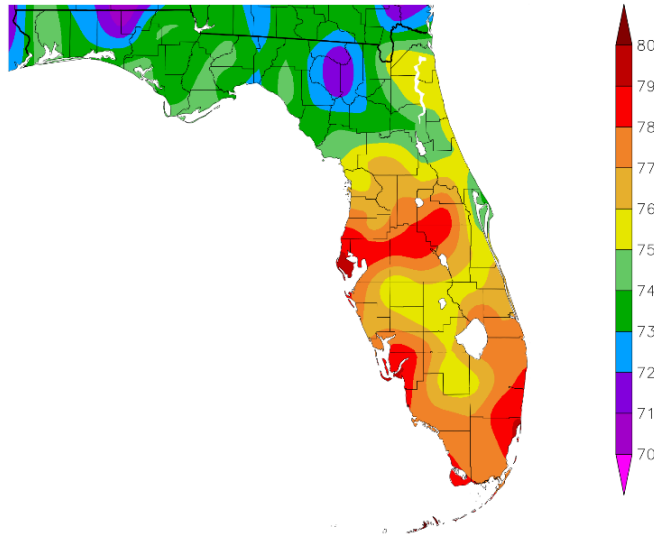
2525 14th Avenue SE, Ruskin, Florida 33570

813-645-2323 <https://weather.gov/tampabay>

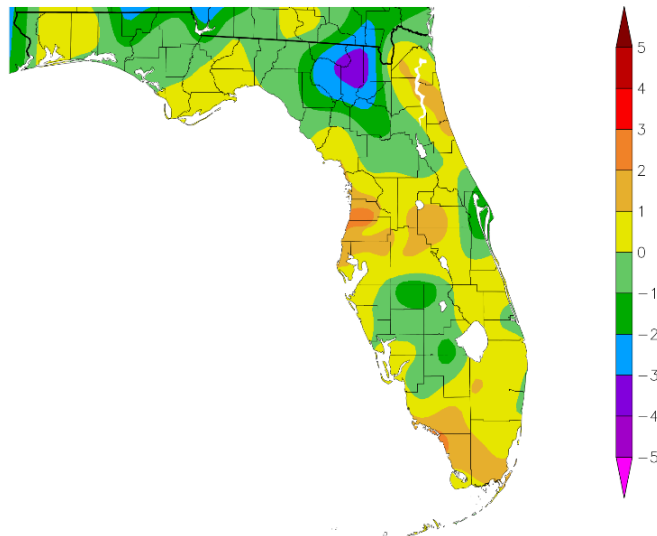
May and Spring 2020 Climate Summary for West Central and Southwest Florida

May 2020 temperatures averaged pretty close to normal across most of the region, with parts of the Nature Coast and Tampa Bay up to 2.5 degrees above normal. No locations placed in the Top Ten Warmest, but one (Myakka River State Park - MKCF1) was in the Top Ten Coolest.

Temperature (F)
5/1/2020 - 5/31/2020



Departure from Normal Temperature (F)
5/1/2020 - 5/31/2020



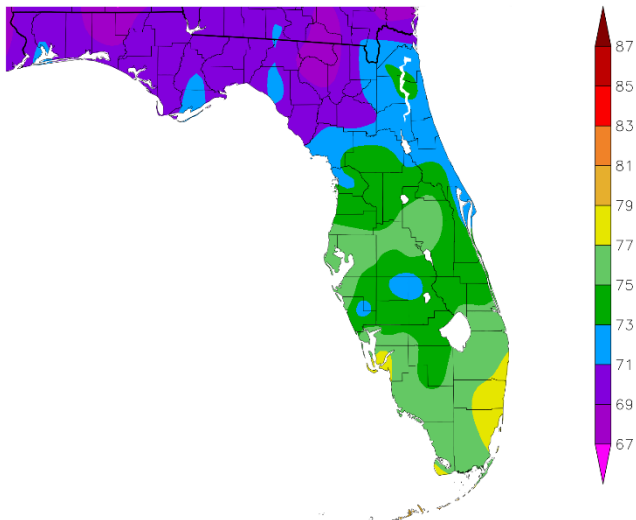
Graphics Source: NOAA Regional Climate Centers

On the other hand Spring (March/April/May) ended up running a few degrees above normal in most areas which placed several locations in the Top Ten Warmest.

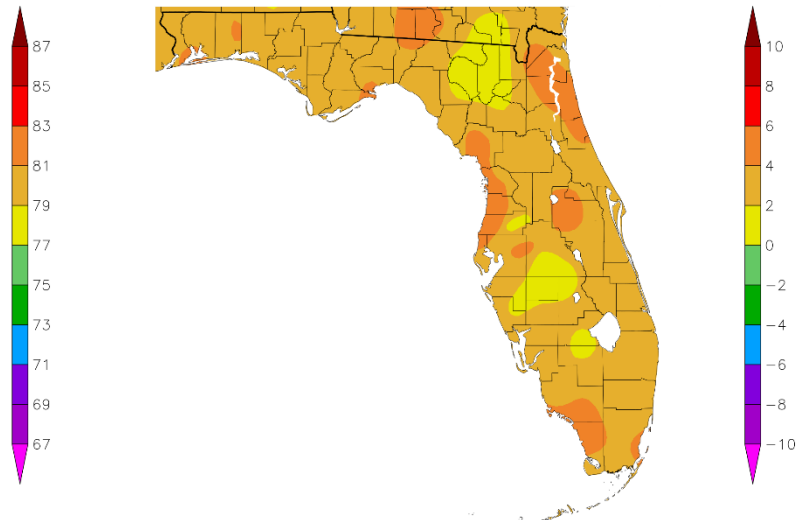
SPRING TEMPERATURE RANKINGS (Warmest-°F):

Location	Spring 2020		Normal Temp	Dep fm Normal	Record/	Records Began
	Rank	Avg Temp			Prev Rec Warmest	
Plant City	1st	76.7°	71.4°	+5.3°	76.2/2015	Sep 1892
Sarasota-Bradenton Area	1st	75.4°	71.4°	+4.0°	75.2/2015	Jan 1911
Fort Myers Area	2nd	77.8°	74.3°	+3.5°	77.9/2015	Jan 1902
St Petersburg Area	2nd(tie)	76.7°	73.3°	+3.4°	77.7/2015	Aug 1914
Winter Haven Area	2nd	76.5°	72.6°	+3.9°	77.7/2015	Mar 1941
Lakeland Area	2nd	76.1°	71.7°	+4.4°	76.3/2015	Jan 1915
Tarpon Springs	2nd(tie)	75.4°	71.2°	+4.2°	75.5/1948	Jan 1892
Chiefland 5 SE	2nd	72.1°	67.7°	+4.4°	73.4/2015	Jun 1956
Tampa Area	3rd	76.2°	72.6°	+3.6°	77.1/2015	Apr 1890
Archbold Bio Stn	3rd(tie)	73.5°	70.4°	+3.1°	75.3/2015	Jan 1969
Inverness 3 SE	5th	73.0°	69.2°	+3.8°	74.0/2015	Jul 1948
Brooksville Area	6th	74.2°	68.7°	+5.5°	75.2/1929	Jan 1892
Venice	8th(tie)	74.5°	71.7°	+2.8°	76.4/2012	May 1955
St Leo	8th(tie)	74.2°	72.4°	+1.8°	75.2/1948	Apr 1895
Bartow	10th	74.7°	72.9°	+1.8°	80.1/2015	Jun 1892
Punta Gorda Area	12th	74.8°	72.6°	+2.2°	77.5/1945	May 1914
Bushnell 1 E	15th(tie)	70.7°	69.6°	+1.1°	73.5/2015	Jul 1948
Wauchula 2 N	18th(tie)	73.1°	72.3°	+0.8°	75.0/1945	Jan 1933
Arcadia	19th(tie)	73.6°	71.0°	+2.6°	76.8/1912	Nov 1899
Myakka River St. Pk	20th(tie)	72.6°	72.1°	+0.5°	75.5/2003	Mar 1956

Temperature (F)
3/1/2020 - 5/31/2020

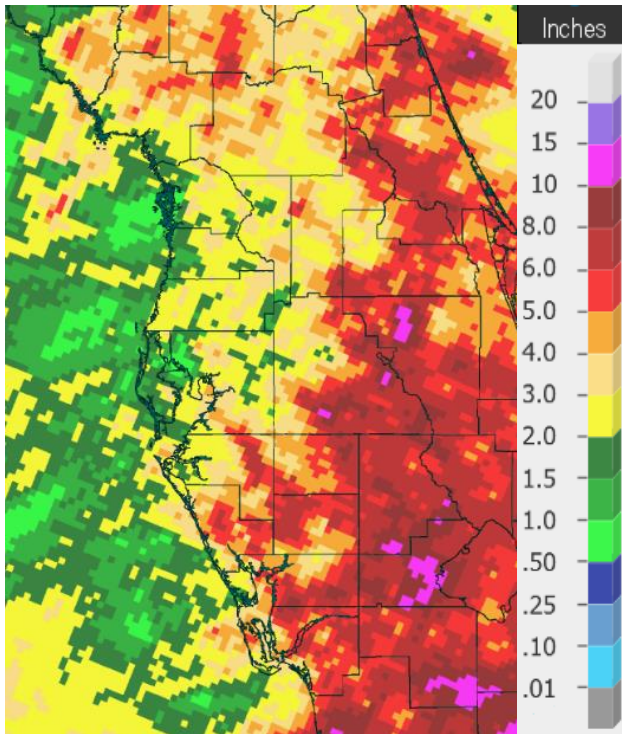


Departure from Normal Temperature (F)
3/1/2020 - 5/31/2020

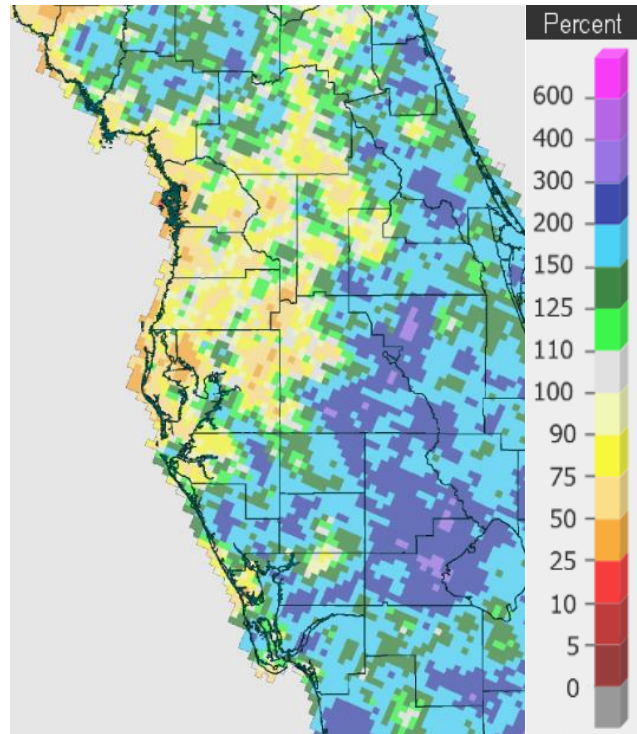


Graphics Source: NOAA Regional Climate Centers

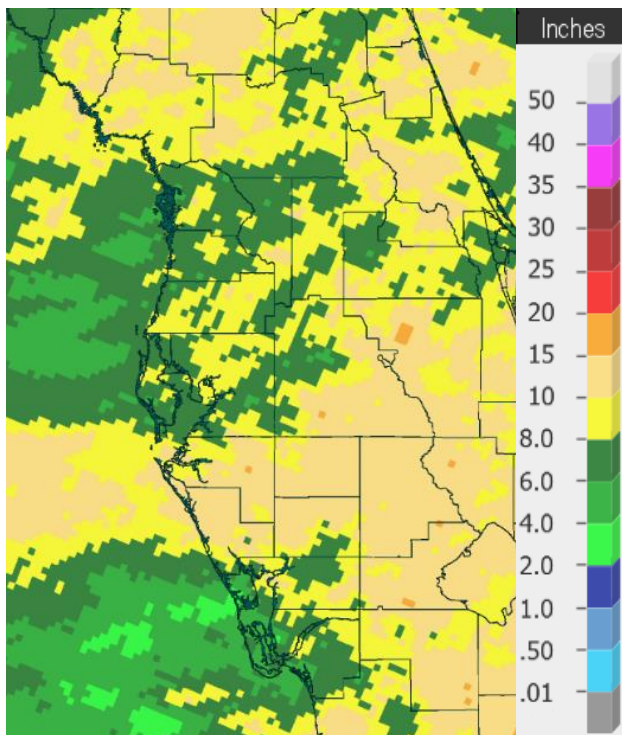
As for rainfall March was one of the driest on record, while April and May saw a wide range of amounts. For May and Spring 2020 most of the interior and parts of southwest Florida had above normal rainfall, while much of the Tampa Bay region and Nature Coast were below normal.



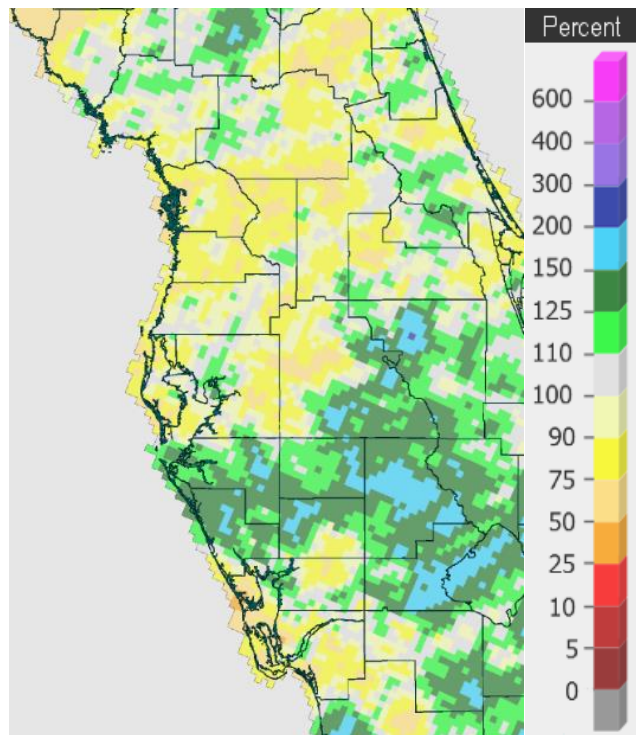
May 2020 Rainfall



May 2020 Percent of Normal



Spring 2020 (Mar/Apr/May) Rainfall



Spring 2020 (Mar/Apr/May) Percent of Normal

On the following pages are tables of the Top Ten Warmest, Coolest, Wettest, and Driest Mays and Springs at some official NWS locations, which includes the average/total for this May and Spring 2020 (March/April/May) where available, and the 1981-2010 Normal (average) temperature and rainfall.

Chiefland 5 ESE (Records began July 1956):

Warmest Mays	Coolest Mays	Wettest Mays	Driest Mays
1 78.5 in 1991	1 72.3 in 1992	1 13.14 in 1976	1 0.00 in 2001
2 78.1 in 2019	2 72.5 in 2013	2 7.50 in 2010	2 0.05 in 2000
3 77.2 in 2017	72.5 in 2005	3 6.99 in 1959	3 0.23 in 2008
77.2 in 1959	72.5 in 1988	4 6.93 in 1966	4 0.26 in 1965
5 77.0 in 1995	5 72.6 in 1967	5 6.87 in 2014	5 0.62 in 1985
6 76.9 in 2015	72.6 in 1960	6 6.82 in 1969	6 0.68 in 1994
76.9 in 1975	7 72.8 in 2007	7 6.72 in 2018	7 0.76 in 2007
8 76.7 in 2012	72.8 in 2006	8 6.65 in 2005	8 0.82 in 1998
9 76.6 in 2018	9 72.9 in 1971	9 5.99 in 1991	0.82 in 1988
76.6 in 1990	10 73.0 in 2001	10 5.72 in 1980	10 0.95 in 1960
...
21 75.2 in 2020	42 75.2 in 2020	18 4.42 in 2020	46 4.42 in 2020

Normal Temperature for May at CHIF1 = 73.8°

Normal Rainfall for May at CHIF1 = 2.29 in.

Warmest Springs	Coolest Springs	Wettest Springs	Driest Springs
1 73.4 in 2015	1 65.8 in 2005	1 24.94 in 1959	1 2.69 in 2007
2 72.1 in 2020	2 66.0 in 1969	2 23.30 in 1982	2 2.92 in 2000
3 72.0 in 1991	3 66.4 in 1960	3 21.65 in 1991	3 3.71 in 2006
4 71.7 in 2012	4 66.5 in 2013	4 19.46 in 2014	4 4.66 in 2002
5 71.3 in 2017	5 66.8 in 1993	5 19.45 in 1957	5 4.71 in 1989
6 70.8 in 2019	66.8 in 1971	6 19.41 in 2005	6 4.77 in 2004
70.8 in 2002	7 66.9 in 1966	7 18.33 in 1996	7 5.29 in 2017
8 70.5 in 2003	8 67.0 in 1996	8 16.64 in 2018	8 5.46 in 1994
9 70.4 in 1995	9 67.2 in 2001	9 16.28 in 1983	9 5.72 in 2019
10 70.3 in 1997	67.2 in 1962	10 16.23 in 1976	10 5.75 in 1998
			5.75 in 1967
	
		36 9.72 in 2020	25 9.72 in 2020

Normal Temperature for Spring at CHIF1 = 67.7°

Normal Rainfall for Spring at CHIF1 = 10.00 in

Inverness 3 SE (Records began July 1948):

Warmest Mays	Coollest Mays	Wettest Mays	Driest Mays
1 80.0 in 1953	1 71.6 in 1992	1 11.97 in 1976	1 0.04 in 2008
2 79.7 in 2010	2 72.3 in 1988	2 11.48 in 2009	2 0.20 in 2000
3 79.1 in 1975	3 72.6 in 1993	3 10.61 in 2018	3 0.40 in 1965
4 78.7 in 1962	4 73.4 in 2005	4 10.59 in 1959	4 0.42 in 1994
5 78.4 in 2019	5 73.6 in 2006	5 8.79 in 1979	5 0.49 in 1998
6 78.2 in 1991	6 73.7 in 1997	6 8.11 in 2012	6 0.54 in 2007
7 78.1 in 2015	7 73.9 in 2001	7 7.71 in 2014	7 0.74 in 1997
78.1 in 1959	8 74.0 in 2007	8 7.33 in 1984	0.74 in 1977
9 78.0 in 1955	74.0 in 1999	9 7.27 in 1952	9 0.78 in 2001
10 77.9 in 2012	10 74.2 in 1982	10 6.92 in 1982	10 1.09 in 2011
	74.2 in 1976
...	...	49 1.84 in 2020	23 1.84 in 2020
36 75.8 in 2020	28 75.8 in 2020		
in 2014	in 2014		

Normal Temperature for May at INVF1 = 75.5°
 Normal Rainfall for May at INVF1 = 2.67 in.

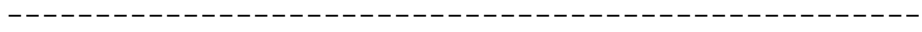
Warmest Springs	Coollest Springs	Wettest Springs	Driest Springs
1 74.0 in 2015	1 66.3 in 1993	1 24.95 in 1959	1 1.96 in 1967
2 73.7 in 1953	2 66.9 in 1992	2 21.14 in 1960	2 2.76 in 1977
3 73.5 in 1967	3 67.1 in 1996	3 20.75 in 1982	3 3.22 in 2000
4 73.1 in 1963	4 67.2 in 1988	4 17.63 in 2018	4 3.60 in 1994
5 73.0 in 2020	5 67.8 in 2018	5 17.36 in 2014	5 4.03 in 2013
6 72.9 in 2012	6 68.1 in 2001	6 17.22 in 1991	6 4.05 in 2007
7 72.5 in 1965	7 68.3 in 2007	7 15.78 in 1987	7 4.24 in 2019
8 72.2 in 1974	8 68.7 in 2004	15.78 in 1976	8 4.47 in 2004
9 72.1 in 2002	68.7 in 1999	9 15.34 in 1958	9 4.63 in 1955
72.1 in 1991	10 69.1 in 2006	10 14.19 in 1952	10 4.67 in 1999
72.1 in 1954			11 4.68 in 2006
			12 4.82 in 1990
			13 5.40 in 2008
			14 5.42 in 2020

Normal Temperature for Spring at INVF1 = 69.2°
 Normal Rainfall for Spring at INVF1 = 9.28 in.

Bushnell 1 E (Records began July 1948):

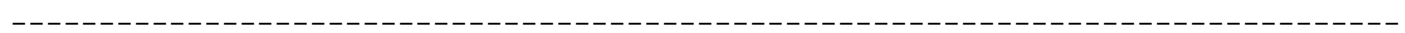
Warmest Mays	Coollest Mays	Wettest Mays	Driest Mays
1 80.1 in 1995	1 68.3 in 1983	1 11.49 in 1976	1 0.21 in 1953
2 78.8 in 1953	2 72.4 in 1988	2 11.27 in 2009	2 0.24 in 2008
3 77.9 in 1996	3 72.8 in 2013	3 9.75 in 1957	3 0.35 in 1990
77.9 in 1975	4 73.6 in 2007	4 8.09 in 1968	4 0.38 in 2000
5 77.8 in 1959	5 73.7 in 1954	5 7.57 in 1966	5 0.54 in 1965
6 77.7 in 2000	6 74.0 in 1971	6 7.54 in 1950	6 0.65 in 1983
77.7 in 1990	7 74.1 in 1981	7 6.81 in 1979	7 0.71 in 1951
77.7 in 1962	8 74.2 in 1976	8 6.65 in 1991	8 0.76 in 2007
9 77.2 in 1956	74.2 in 1951	9 6.59 in 1962	9 0.96 in 1985
77.2 in 1955	10 74.3 in 2014	10 6.33 in 2014	10 0.99 in 2001
	74.3 in 1960
		51 1.97 in 2020	22 1.97 in 2020

Average Temperature for May 2020 = A Few Days Missing
 Normal Temperature for May at BSHF1 = 75.6°
 Normal Rainfall for May at BSHF1 = 3.79 in.



Warmest Springs	Coollest Springs	Wettest Springs	Driest Springs
1 73.5 in 2015	1 67.2 in 2013	1 23.70 in 1959	1 2.36 in 2000
2 72.5 in 1975	2 68.3 in 1971	2 21.10 in 1960	2 3.23 in 1990
3 72.0 in 2012	3 68.5 in 2018	3 20.90 in 1982	3 3.44 in 1967
72.0 in 1955	4 68.6 in 1987	4 20.05 in 1957	4 3.76 in 1965
5 71.9 in 1974	68.6 in 1986	5 19.77 in 1991	5 3.94 in 1999
6 71.6 in 1982	68.6 in 1966	6 16.67 in 1983	6 4.22 in 1961
71.6 in 1967	7 68.7 in 2014	7 16.27 in 2014	7 4.43 in 1977
8 71.4 in 1963	8 68.9 in 1969	8 16.06 in 1976	8 4.44 in 1981
9 71.2 in 1964	9 69.0 in 1960	9 15.03 in 1987	9 4.65 in 1985
10 71.1 in 1970	10 69.1 in 1981	10 14.92 in 1958	10 5.04 in 2004
11 71.0 in 1965	69.1 in 1951		...
12 70.9 in 1980			19 6.53 in 2020
13 70.8 in 2016			
70.8 in 1973			
15 70.7 in 2020			
70.7 in 1957			

Normal Temperature for Spring at BSHF1 = 69.6°
 Normal Rainfall for Spring at BSHF1 = 10.06 in.



Brooksville Area (Records began January 1892):

Warmest Mays	Coollest Mays	Wettest Mays	Driest Mays
1 80.7 in 1905	1 72.5 in 2005	1 16.27 in 1976	1 Trace in 1977
2 80.6 in 1927	2 72.8 in 1917	2 15.57 in 2009	2 0.19 in 1926
3 80.3 in 1933	3 73.1 in 2001	3 12.25 in 2018	3 0.23 in 1949
4 79.6 in 1995	4 73.2 in 1924	4 12.20 in 1923	4 0.29 in 2000
5 79.4 in 1899	73.2 in 1920	5 9.54 in 2014	5 0.45 in 1951
6 79.2 in 1929	6 73.4 in 1923	6 9.25 in 1906	6 0.47 in 1948
7 79.1 in 1962	7 73.6 in 1999	7 9.15 in 1912	7 0.57 in 1908
8 79.0 in 1975	8 73.7 in 1925	8 8.71 in 1921	8 0.60 in 1899
79.0 in 1902	9 73.8 in 2006	9 8.18 in 1957	9 0.68 in 1910
10 78.7 in 2019	73.8 in 1954	10 7.92 in 1919	10 0.70 in 1927
78.7 in 1953	
78.7 in 1935		101 1.60 in 2020	26 1.60 in 2020
...	...		
30 77.3 in 2020	82 77.3 in 2020		
in 1994	in 1994		

Normal Temperature for May at BKV = 74.7°
 Normal Rainfall for May at BKV = 2.95 in.

Warmest Springs	Coollest Springs	Wettest Springs	Driest Springs
1 75.2 in 1929	1 66.1 in 2005	1 22.97 in 1959	1 1.57 in 2000
2 75.0 in 1945	2 67.6 in 2004	2 21.84 in 1960	2 2.20 in 1977
3 74.4 in 1927	67.6 in 1926	3 21.28 in 1991	2.20 in 1945
4 74.3 in 2015	67.6 in 1892	4 20.07 in 1928	4 2.35 in 2006
74.3 in 1935	5 67.8 in 1924	5 19.69 in 1976	5 2.58 in 1910
6 74.2 in 2020	6 68.0 in 2010	6 19.67 in 1900	6 3.25 in 1908
7 74.0 in 1948	7 68.1 in 1998	7 18.83 in 2018	7 3.56 in 1967
8 73.6 in 1938	8 68.2 in 2013	8 18.78 in 1982	8 3.65 in 2017
9 73.3 in 1994	9 68.3 in 2001	9 18.54 in 1987	9 3.77 in 1999
10 73.2 in 1905	68.3 in 1999	10 18.26 in 1957	10 3.82 in 1981
	
		90 6.41 in 2020	27 6.41 in 2020

Normal Temperature for Spring at BKV = 68.7°
 Normal Rainfall for Spring at BKV = 9.21 in.

St. Leo (Records began April 1895):

Warmest Mays	Coollest Mays	Wettest Mays	Driest Mays
1 81.3 in 1995	1 71.7 in 1928	1 16.81 in 1979	1 0.03 in 2000
2 80.6 in 1899	2 72.3 in 1921	2 14.37 in 1923	2 0.15 in 2008
3 80.2 in 1953	3 73.0 in 1923	3 11.64 in 2009	3 0.17 in 1953
4 80.1 in 2003	4 73.1 in 1931	4 10.33 in 1976	4 0.28 in 1965
5 79.7 in 2000	5 73.6 in 1917	5 10.06 in 2018	5 0.40 in 1985
6 79.6 in 1896	6 73.7 in 1940	6 9.43 in 1919	6 0.51 in 1914
7 79.4 in 1962	7 73.8 in 1920	7 9.23 in 1963	7 0.78 in 2001
8 79.3 in 1985	8 73.9 in 1992	8 8.64 in 1905	8 0.84 in 1998
79.3 in 1902	9 74.1 in 1918	9 8.63 in 1957	9 0.86 in 1927
10 79.2 in 2019	10 74.2 in 1903	10 8.28 in 1921	10 0.92 in 1996
79.2 in 1975	
...	...	75 2.66 in 2020	52 2.66 in 2020
77 76.2 in 2020	43 76.2 in 2020		
in 1968	in 1968		
in 1951	in 1951		
in 1944	in 1944		
in 1936	in 1936		
in 1924	in 1924		
in 1916	in 1916		
in 1910	in 1910		

Normal Temperature for May at STLF1 = 77.9°

Normal Rainfall for May at STLF1 = 2.78 in.

Warmest Springs	Coollest Springs	Wettest Springs	Driest Springs
1 75.2 in 1948	1 65.6 in 1931	1 24.63 in 1987	1 1.12 in 2000
2 74.9 in 2002	2 67.9 in 1915	2 21.67 in 1979	2 1.83 in 1967
3 74.8 in 1945	3 68.0 in 1928	3 21.01 in 1960	3 2.87 in 1898
4 74.7 in 2003	4 68.5 in 1930	4 20.57 in 1900	4 3.20 in 1904
5 74.6 in 2015	5 69.0 in 1940	5 20.48 in 1959	5 3.32 in 1977
6 74.5 in 1908	6 69.2 in 1916	6 20.01 in 1953	6 3.96 in 1999
7 74.4 in 1995	7 69.3 in 2013	7 19.13 in 1991	7 4.03 in 1908
8 74.2 in 2020	69.3 in 1971	8 18.77 in 1928	8 4.10 in 1914
74.2 in 1953	69.3 in 1969	9 18.34 in 1957	9 4.19 in 1910
10 74.1 in 1994	10 69.4 in 1992	10 17.99 in 2018	10 4.46 in 2006
	69.4 in 1926
	69.4 in 1920	64 8.98 in 2020	63 8.98 in 2020

Normal Temperature for Spring at STLF1 = 72.4°

Normal Rainfall for Spring at STLF1 = 9.55 in.

Tarpon Springs (Records began January 1892):

Warmest Mays	Coollest Mays	Wettest Mays	Driest Mays
1 82.1 in 1995	1 71.7 in 1939	1 15.17 in 1979	1 0.00 in 2001
2 80.6 in 2019	2 72.6 in 1897	2 10.14 in 1991	0.00 in 2000
80.6 in 1991	3 72.8 in 1917	3 10.13 in 1976	3 Trace in 1927
4 80.3 in 1933	4 73.6 in 1894	4 9.38 in 1946	4 0.01 in 2007
5 80.0 in 1996	5 74.0 in 1928	5 8.18 in 1921	5 0.03 in 1965
6 79.8 in 2010	6 74.1 in 1992	6 7.70 in 1969	6 0.11 in 1949
7 79.6 in 2003	74.1 in 1941	7 7.17 in 1957	7 0.13 in 1899
8 79.3 in 1953	74.1 in 1921	8 6.84 in 1915	8 0.14 in 1994
79.3 in 1943	74.1 in 1903	9 6.79 in 2018	9 0.15 in 1953
10 79.2 in 1994	74.1 in 1892	10 6.53 in 2012	10 0.23 in 1951
79.2 in 1990	
...	...	62 2.21 in 2020	65 2.21 in 2020
23 78.2 in 2020	102 78.2 in 2020	in 1932	in 1932
in 1948	in 1948		

Normal Temperature for May at TRPF1 = 76.6°
 Normal Rainfall for May at TRPF1 = 2.02 in.

Warmest Springs	Coollest Springs	Wettest Springs	Driest Springs
1 75.5 in 1948	1 66.9 in 1940	1 22.38 in 1959	1 0.97 in 1898
2 75.4 in 2020	2 67.5 in 1915	2 20.20 in 1979	2 1.40 in 2000
75.4 in 2015	3 68.0 in 1960	3 19.83 in 1991	3 1.43 in 2006
4 75.0 in 1995	68.0 in 1931	4 18.91 in 1987	4 1.47 in 1967
75.0 in 1991	5 68.3 in 1971	5 18.30 in 1957	5 1.86 in 1908
6 74.9 in 1929	6 68.7 in 1916	6 18.26 in 1942	6 2.81 in 1990
7 74.8 in 1997	7 68.8 in 1969	7 17.99 in 1960	7 2.82 in 1977
8 74.4 in 1994	68.8 in 1941	8 16.73 in 1900	8 2.83 in 1945
74.4 in 1945	9 68.9 in 1900	9 15.71 in 1983	9 3.21 in 1927
10 74.1 in 2019	10 69.0 in 1906	10 15.58 in 1931	10 3.22 in 2017
	
		57 8.21 in 2020	71 8.21 in 2020

Normal Temperature for Spring at TRPF1 = 71.2°
 Normal Rainfall for Spring at TRPF1 = 8.20 in.

Tampa Area (Records began April 1890):

Warmest Mays	Coollest Mays	Wettest Mays	Driest Mays
1 81.7 in 1995	1 73.8 in 1891	1 17.64 in 1979	1 Trace in 2001
2 81.6 in 2019	2 74.2 in 1992	2 9.41 in 1921	2 0.02 in 2000
3 81.5 in 1975	3 74.3 in 1928	3 9.11 in 2009	3 0.07 in 1994
4 81.2 in 1991	4 74.4 in 1982	4 8.54 in 2014	4 0.10 in 1992
5 81.0 in 2017	5 74.5 in 1897	5 8.13 in 1976	5 0.16 in 1941
6 80.9 in 2010	6 74.7 in 1940	6 7.73 in 2018	6 0.17 in 1973
7 80.7 in 2012	74.7 in 1917	7 7.55 in 1959	7 0.22 in 1985
8 80.5 in 2015	8 74.8 in 1921	8 7.21 in 1957	8 0.24 in 1989
80.5 in 1990	74.8 in 1903	9 6.92 in 1894	9 0.31 in 1940
10 80.3 in 2000	10 74.9 in 1923	10 6.88 in 1991	10 0.33 in 1897
...
24 78.9 in 2020	106 78.9 in 2020	106 0.75 in 2020	26 0.75 in 2020
in 2004	in 2004		
in 1946	in 1946		

Normal Temperature for May at TPA = 78.4°

Normal Rainfall for May at TPA = 2.10 in.

Warmest Springs	Coollest Springs	Wettest Springs	Driest Springs
1 77.1 in 2015	1 68.3 in 1915	1 25.67 in 1959	1 0.61 in 1898
2 76.6 in 2012	2 68.5 in 1931	2 20.78 in 1957	2 0.86 in 2000
3 76.2 in 2020	68.5 in 1901	3 20.62 in 1979	3 1.29 in 1967
4 76.0 in 2017	4 68.8 in 1969	4 19.91 in 1930	4 2.17 in 1945
5 75.4 in 1991	5 69.1 in 1971	5 17.54 in 1931	5 2.32 in 1977
75.4 in 1945	6 69.2 in 1993	6 15.26 in 1987	6 2.46 in 2006
7 75.3 in 2002	7 69.4 in 1992	7 14.45 in 1983	7 2.64 in 1999
8 75.1 in 2019	69.4 in 1926	8 14.38 in 2014	8 2.74 in 1989
8 74.9 in 2011	9 69.6 in 1983	9 14.31 in 1924	9 2.98 in 1985
10 74.8 in 2016	69.6 in 1940	10 13.73 in 1960	10 3.06 in 2017
	69.6 in 1916
	69.6 in 1891	64 7.48 in 2020	67 7.48 in 2020

Normal Temperature for Spring at TPA = 72.6°

Normal Rainfall for Spring at TPA = 7.16 in.

St Petersburg Area (Records began August 1914):

Warmest Mays	Coollest Mays	Wettest Mays	Driest Mays
1 82.0 in 2010	1 75.3 in 1928	1 10.64 in 1959	1 0.00 in 1953
2 81.5 in 2015	75.3 in 1921	2 9.68 in 2018	2 Trace in 2007
3 81.3 in 1995	3 75.4 in 1992	3 9.21 in 1979	3 0.02 in 2000
4 81.2 in 1933	75.4 in 1917	4 8.17 in 1976	4 0.04 in 2001
5 80.9 in 2003	5 75.7 in 1940	5 7.85 in 1925	5 0.05 in 1941
80.9 in 1991	6 75.8 in 1954	6 7.16 in 1991	6 0.18 in 1945
7 80.8 in 1975	7 76.2 in 1920	7 7.11 in 1915	7 0.19 in 1973
80.8 in 1935	8 76.4 in 1993	8 7.05 in 1921	8 0.22 in 1992
9 80.4 in 2012	9 76.5 in 1988	9 6.99 in 2009	9 0.24 in 1994
10 80.3 in 2000	10 76.6 in 1960	10 6.08 in 1957	10 0.26 in 1965
...	76.6 in 1951
37 79.1 in 2020	64 79.1 in 2020	79 1.26 in 2020	27 1.26 in 2020
in 1977	in 1977	in 1960	in 1960
in 1973	in 1973		
in 1965	in 1965		

Normal Temperature for May at SPG = 79.0°

Normal Rainfall for May at SPG = 2.21 in.

Warmest Springs	Coollest Springs	Wettest Springs	Driest Springs
1 77.7 in 2015	1 69.5 in 1915	1 26.45 in 1959	1 0.88 in 1945
2 76.7 in 2020	2 70.1 in 1931	2 17.88 in 1957	2 1.42 in 2000
76.7 in 2012	3 70.2 in 1993	3 17.20 in 1930	3 1.53 in 2006
4 75.9 in 1948	70.2 in 1983	4 17.18 in 1931	4 1.73 in 1977
75.9 in 1935	5 70.7 in 1996	5 16.31 in 1987	5 2.48 in 1967
75.9 in 1929	70.7 in 1940	6 15.65 in 1982	6 2.73 in 2007
7 75.8 in 2002	70.7 in 1926	7 15.17 in 1960	7 2.84 in 1938
8 75.6 in 2011	8 70.8 in 1916	8 14.50 in 2003	8 2.85 in 1949
9 75.5 in 2003	9 71.0 in 1992	9 14.03 in 1991	9 2.88 in 1999
10 75.3 in 2016	10 71.1 in 1924	10 13.98 in 1958	10 2.96 in 2002
75.3 in 1975	
		84 4.91 in 2020	23 4.91 in 2020

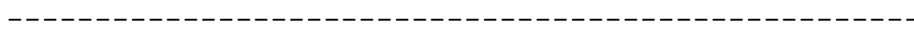
Normal Temperature for Spring at SPG = 73.3°

Normal Rainfall for Spring at SPG = 8.23 in.

Plant City (Records began February 1893):

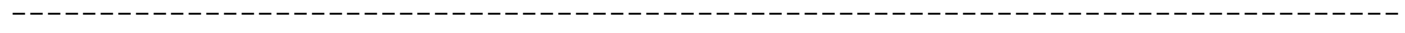
Warmest Mays	Coollest Mays	Wettest Mays	Driest Mays
1 82.0 in 2019	1 71.3 in 1928	1 16.44 in 2009	1 0.01 in 2001
2 80.8 in 2017	2 71.9 in 1931	2 14.27 in 2018	2 0.14 in 2000
3 80.1 in 1915	3 72.0 in 1940	3 11.77 in 1991	3 0.29 in 1953
4 80.0 in 1995	4 72.4 in 1941	4 11.68 in 1979	4 0.50 in 1992
5 79.8 in 1975	5 73.0 in 1925	5 10.64 in 1923	5 0.58 in 1981
6 79.6 in 2010	6 73.6 in 1992	6 10.14 in 1957	6 0.62 in 2007
7 79.5 in 1991	7 73.9 in 1932	7 9.10 in 1905	7 0.67 in 1985
79.5 in 1953	8 74.0 in 1979	8 9.04 in 1976	0.67 in 1948
9 79.3 in 2012	74.0 in 1960	9 8.72 in 1907	9 0.72 in 1898
10 79.2 in 1990	10 74.1 in 1901	10 7.56 in 1900	10 0.75 in 1945
11 79.1 in 1916	
12 79.0 in 2015		99 1.51 in 2020	25 1.51 in 2020
13 78.9 in 1912			
14 78.8 in 2020			

Normal Temperature for May at PLCF1 = 76.8°
 Normal Rainfall for May at PLCF1 = 3.38 in.



Warmest Springs	Coollest Springs	Wettest Springs	Driest Springs
1 76.7 in 2020	1 64.9 in 1931	1 26.28 in 1959	1 1.56 in 1898
2 76.2 in 2015	2 66.8 in 1901	2 23.68 in 1957	2 1.91 in 1977
3 75.6 in 2019	3 67.0 in 1932	3 20.67 in 1991	3 2.30 in 1981
4 75.1 in 1912	4 67.9 in 1940	4 19.68 in 1960	4 2.40 in 1908
5 75.0 in 2017	5 68.0 in 1941	5 19.42 in 1987	5 2.61 in 1945
6 74.8 in 2016	6 68.1 in 1930	6 19.38 in 1900	6 2.62 in 2017
7 74.7 in 2012	7 68.9 in 1925	7 19.25 in 1933	7 3.13 in 1902
8 74.3 in 1991	8 69.0 in 1942	8 18.59 in 2009	8 3.29 in 1949
74.3 in 1948	69.0 in 1928	9 18.56 in 1930	9 3.47 in 1985
74.3 in 1945	10 69.1 in 1924	10 18.30 in 1931	10 3.61 in 1967
	
		86 6.77 in 2020	36 6.77 in 2020

Normal Temperature for Spring at PLCF1 = 71.4°
 Normal Rainfall for Spring at PLCF1 = 9.64 in.



Lakeland (Records began January 1915):

Warmest Mays	Coollest Mays	Wettest Mays	Driest Mays
1 82.9 in 1995	1 73.4 in 1928	1 19.19 in 2018	1 0.13 in 1953
2 81.0 in 1996	2 74.0 in 2007	2 16.03 in 1979	2 0.37 in 2008
3 80.8 in 2019	3 74.4 in 1941	3 14.95 in 2009	3 0.44 in 2001
4 80.7 in 1991	74.4 in 1921	4 10.83 in 1923	4 0.50 in 1985
5 80.6 in 2010	5 74.8 in 1923	5 10.65 in 1991	5 0.55 in 2000
6 80.5 in 1990	6 75.1 in 1982	6 9.68 in 1957	0.55 in 1965
7 80.4 in 1994	75.1 in 1970	7 9.10 in 1968	7 0.63 in 1986
8 80.1 in 1933	8 75.2 in 1940	8 8.45 in 1922	8 0.89 in 1960
9 80.0 in 2017	75.2 in 1917	9 8.21 in 1921	9 0.92 in 1945
10 79.9 in 2015	10 75.4 in 1972	10 8.15 in 1924	10 0.96 in 1997
79.9 in 1935	75.4 in 1960		11 0.99 in 1941
	75.4 in 1931		12 1.11 in 1989
	75.4 in 1920		13 1.25 in 1927
...	...		14 1.29 in 1998
28 78.2 in 2020	76 78.2 in 2020		1.29 in 1917
in 2011	in 2011		16 1.30 in 2020
in 1915	in 1915		

Normal Temperature for May at LLDF1 = 77.1°
 Normal Rainfall for May at LLDF1 = 3.36 in.

Warmest Springs	Coollest Springs	Wettest Springs	Driest Springs
1 76.3 in 2015	1 69.1 in 1941	1 24.87 in 1959	1 2.28 in 1945
2 76.1 in 2020	2 69.3 in 1915	2 23.85 in 2018	2 3.02 in 1981
3 76.0 in 1995	3 69.5 in 1960	3 21.98 in 1981	3 3.16 in 2000
4 75.8 in 1994	4 69.6 in 1969	4 21.14 in 1957	4 3.32 in 1967
5 75.7 in 1991	5 69.8 in 1983	5 21.03 in 1979	5 3.40 in 2017
75.7 in 1935	69.8 in 1925	6 20.64 in 1934	6 3.75 in 1977
7 75.0 in 2012	7 69.9 in 1971	7 18.56 in 1982	7 3.89 in 2006
75.0 in 1989	8 70.0 in 2007	8 18.46 in 1987	8 4.03 in 1985
9 74.8 in 1945	9 70.2 in 1926	9 17.86 in 1931	9 4.45 in 1949
74.8 in 1929	70.2 in 1924	17.86 in 1930	10 4.75 in 2012
			11 5.03 in 1972
			12 5.13 in 2007
			13 5.30 in 1917
			14 5.34 in 2004
			15 5.59 in 2020

Normal Temperature for Spring at LLDF1 = 71.7°
 Normal Rainfall for Spring at LLDF1 = 9.92 in.

Winter Haven Area (Records began March 1941) :

Warmest Mays	Coollest Mays	Wettest Mays	Driest Mays
1 81.8 in 2019	1 74.3 in 1972	1 12.72 in 1957	1 0.03 in 2000
2 81.6 in 1995	2 74.5 in 1960	2 10.36 in 1982	2 0.49 in 1945
3 80.9 in 2015	3 74.6 in 1982	3 8.54 in 1943	3 0.57 in 1941
80.9 in 2010	4 74.9 in 1954	4 8.26 in 2009	4 0.58 in 1965
80.9 in 2003	5 75.1 in 1941	5 8.11 in 1976	5 0.71 in 2004
6 80.2 in 1990	6 75.3 in 1983	6 7.63 in 1946	6 0.80 in 1951
80.2 in 1989	7 75.4 in 1971	7 7.58 in 2018	7 0.81 in 1985
80.2 in 1953	8 75.5 in 1988	8 6.81 in 1947	8 0.84 in 1949
9 80.0 in 2017	75.5 in 1968	9 6.75 in 1975	9 0.88 in 1969
80.0 in 2012	10 75.7 in 2007	10 6.54 in 2016	10 0.97 in 2015
...	75.7 in 1977
22 78.9 in 2020	75.7 in 1973	55 1.66 in 2020	22 1.66 in 2020
	...	in 1973	in 1973

Normal Temperature for May at GIF = 77.7°
 Normal Rainfall for May at GIF = 2.90 in.

Warmest Springs	Coollest Springs	Wettest Springs	Driest Springs
1 77.7 in 2015	1 69.1 in 1983	1 23.21 in 1957	1 1.61 in 2000
2 76.5 in 2020	2 69.5 in 1960	2 21.81 in 1959	2 2.25 in 1945
3 76.1 in 1948	3 69.8 in 1971	3 20.49 in 1982	3 2.61 in 2017
4 75.9 in 1991	69.8 in 1969	4 20.32 in 1960	4 2.94 in 1981
75.9 in 1945	5 70.1 in 1941	5 18.23 in 1947	5 3.77 in 2007
6 75.7 in 1989	6 70.4 in 1987	6 15.16 in 1991	6 3.78 in 1967
7 75.5 in 2012	70.4 in 1968	7 14.42 in 2010	7 4.08 in 2015
8 75.4 in 2019	8 70.6 in 1993	8 13.59 in 1970	8 4.17 in 2006
9 75.3 in 2003	70.6 in 1981	13.59 in 1973	9 4.39 in 1965
10 75.0 in 1995	10 70.8 in 2013	10 13.44 in 1958	10 4.50 in 1999
75.0 in 1990	70.8 in 2005		11 4.51 in 2004
	70.8 in 1988		12 5.00 in 2019
			13 5.09 in 2002
			14 5.10 in 2020

Normal Temperature for Spring at GIF = 72.6°
 Normal Rainfall for Spring at GIF = 8.95 in.

Bartow (Records began January 1892):

Warmest Mays	Coollest Mays	Wettest Mays	Driest Mays
1 82.9 in 2015	1 73.3 in 1928	1 17.74 in 1923	1 0.02 in 1965
2 81.4 in 1995	2 73.5 in 1913	2 13.05 in 1979	2 0.25 in 1941
3 81.1 in 2014	3 73.8 in 1941	3 12.96 in 1957	3 0.36 in 1908
81.1 in 2003	4 74.3 in 1894	4 11.42 in 2009	4 0.40 in 1992
5 81.0 in 2012	5 74.5 in 1917	5 11.16 in 1905	5 0.45 in 1951
6 80.5 in 1905	6 74.6 in 1921	6 11.15 in 1930	6 0.72 in 1955
7 80.0 in 1990	7 74.7 in 1940	7 11.04 in 1976	7 0.75 in 1949
80.0 in 1975	74.7 in 1897	8 10.35 in 1921	8 0.87 in 1953
80.0 in 1953	9 74.8 in 1992	9 9.46 in 2018	9 0.91 in 2004
10 79.8 in 1991	10 74.9 in 1982	10 9.42 in 1932	10 0.95 in 1986
79.8 in 1933	
79.8 in 1899		63 3.37 in 2020	67 3.37 in 2020
...	...		
67 76.9 in 2020	52 76.9 in 2020		
in 2013	in 2013		
in 1958	in 1958		
in 1930	in 1930		

Normal Temperature for May at BARF1 = 78.1°
 Normal Rainfall for May at BARF1 = 2.78 in.

Warmest Springs	Coollest Springs	Wettest Springs	Driest Springs
1 80.1 in 2015	1 67.8 in 1915	1 25.91 in 1959	1 2.34 in 1908
2 76.0 in 2003	2 68.2 in 1901	2 22.99 in 1930	2 2.48 in 1967
3 75.9 in 2012	3 69.3 in 1914	3 22.88 in 1957	3 2.55 in 2000
4 75.6 in 2014	4 69.6 in 1983	4 19.55 in 1934	4 3.27 in 1977
5 75.4 in 1908	5 70.1 in 1993	5 19.44 in 1923	5 3.53 in 1949
6 75.3 in 1945	6 70.5 in 1894	6 19.34 in 1905	3.53 in 1894
7 75.1 in 1991	70.5 in 1893	7 19.05 in 1947	7 3.55 in 2017
8 74.8 in 1995	8 70.6 in 1971	8 18.67 in 1991	8 3.57 in 1892
74.8 in 1948	70.6 in 1960	9 17.84 in 1979	9 3.77 in 1911
10 74.7 in 2020	70.6 in 1925	10 16.39 in 1937	10 3.82 in 1981
	70.6 in 1913
	70.6 in 1896	89 7.04 in 2020	39 7.04 in 2020

Normal Temperature for Spring at BARF1 = 72.9°
 Normal Rainfall for Spring at BARF1 = 8.99 in.

Sarasota-Bradenton Area (Records began January 1911):

Warmest Mays	Coollest Mays	Wettest Mays	Driest Mays
1 80.7 in 2019	1 71.8 in 1917	1 9.52 in 1996	1 0.00 in 1941
80.7 in 1995	2 72.9 in 1928	2 9.39 in 1991	2 Trace in 2007
3 79.6 in 2010	3 73.1 in 1940	3 9.34 in 1978	3 0.02 in 1953
4 79.5 in 1991	4 73.4 in 1911	4 9.26 in 1957	4 0.10 in 1951
79.5 in 1990	5 73.5 in 1931	5 9.05 in 1921	0.10 in 1945
6 79.4 in 2012	73.5 in 1921	6 8.56 in 1954	6 0.13 in 1973
7 78.9 in 2017	7 73.7 in 1960	7 8.18 in 1959	7 0.15 in 1992
8 78.7 in 2003	8 74.0 in 1924	8 7.52 in 1934	0.15 in 1952
9 78.3 in 2016	9 74.1 in 1926	9 7.05 in 2014	9 0.16 in 1967
78.3 in 1950	10 74.2 in 1992	10 6.97 in 2018	10 0.18 in 1994
78.3 in 1946	74.2 in 1923
...		53 2.26 in 2020	58 2.26 in 2020
20 77.9 in 2020			
in 1943			

Normal Temperature for May at SRQ = 76.4°
 Normal Rainfall for May at SRQ = 2.21 in.

Warmest Springs	Coollest Springs	Wettest Springs	Driest Springs
1 75.4 in 2020	1 66.8 in 1931	1 25.80 in 1957	1 1.39 in 1967
2 75.2 in 2015	2 67.2 in 1915	2 17.97 in 1959	2 2.01 in 2006
3 75.1 in 2012	3 68.3 in 1916	3 17.92 in 1991	3 2.07 in 1977
4 74.5 in 2019	4 68.5 in 1940	4 16.60 in 1996	4 2.50 in 1945
5 74.4 in 2016	5 68.8 in 1941	5 16.55 in 1997	5 2.61 in 1981
6 74.3 in 1995	68.8 in 1926	6 15.97 in 1958	6 2.83 in 1974
7 74.0 in 1994	68.8 in 1924	7 15.17 in 1930	7 2.97 in 1956
8 73.9 in 2003	8 69.0 in 1983	8 14.97 in 1969	8 3.02 in 2007
73.9 in 2002	9 69.1 in 1971	9 14.76 in 2014	3.02 in 1949
10 73.8 in 1991	10 69.5 in 1914	10 14.20 in 1987	10 3.10 in 2000
	
		30 10.76 in 2020	80 10.76 in 2020

Normal Temperature for Spring at SRQ = 71.4°
 Normal Rainfall for Spring at SRQ = 8.51 in.

**Myakka River State Park (Temperature Records began March 1956/
Rainfall Records began September 1943):**

Warmest Mays	Coollest Mays	Wettest Mays	Driest Mays
1 81.3 in 1995	1 73.5 in 1960	1 15.06 in 2018	1 0.02 in 2007
2 80.1 in 2010	2 74.2 in 1992	2 12.81 in 1959	0.02 in 2000
3 79.9 in 2019	3 74.9 in 1988	3 9.17 in 2014	3 0.23 in 1985
4 79.8 in 2003	4 75.0 in 2001	4 8.85 in 1970	4 0.35 in 1953
5 79.4 in 1990	75.0 in 1993	5 7.95 in 1975	5 0.42 in 1945
6 79.3 in 1998	6 75.1 in 2013	6 7.92 in 2009	6 0.50 in 1955
7 79.2 in 1978	75.1 in 1963	7 7.73 in 2016	7 0.55 in 1994
8 79.0 in 1996	8 75.2 in 1972	8 7.55 in 1976	8 0.56 in 1973
9 78.9 in 2012	9 75.4 in 1970	9 6.02 in 1968	9 0.61 in 1951
78.9 in 1975	10 75.6 in 2020	10 5.59 in 1963	10 0.62 in 1949
		11 5.57 in 1987	
		12 5.50 in 1996	
		13 5.47 in 2020	

Normal Temperature for May at MKCF1 = 77.1°
Normal Rainfall for May at MKCF1 = 2.82 in.

Warmest Springs	Coollest Springs	Wettest Springs	Driest Springs
1 75.5 in 2003	1 69.1 in 1960	1 23.31 in 1959	1 1.43 in 2006
2 75.4 in 1995	2 69.8 in 1971	2 18.47 in 1987	2 1.83 in 1945
3 74.9 in 1997	69.8 in 1962	3 18.06 in 1957	3 3.01 in 1989
4 74.1 in 2012	4 70.0 in 2013	4 18.02 in 2018	4 3.44 in 1981
74.1 in 1982	5 70.4 in 1986	5 17.63 in 1993	5 3.56 in 1955
74.1 in 1975	6 70.5 in 1983	6 16.55 in 1998	6 3.80 in 2004
7 74.0 in 2019	70.5 in 1958	7 16.43 in 2014	7 4.05 in 1978
74.0 in 1990	8 70.7 in 2005	8 15.59 in 1969	8 4.12 in 1950
9 73.8 in 1994	70.7 in 1988	9 15.18 in 1970	9 4.16 in 1971
10 73.6 in 2016	10 70.8 in 1959	10 14.48 in 1982	10 4.37 in 1953
...		...	
20 72.6 in 2020		19 12.24 in 2020	
72.6 in 2000			

Normal Temperature for Spring at MKCF1 = 72.1°
Normal Rainfall for Spring at MKCF1 = 9.27 in.

Venice (Records began May 1955) :

Warmest Mays	Coollest Mays	Wettest Mays	Driest Mays
1 82.7 in 2010	1 72.9 in 1988	1 13.39 in 2018	1 0.06 in 1994
2 81.8 in 1995	2 74.3 in 1960	2 8.57 in 1969	0.06 in 1989
3 81.3 in 2003	3 74.5 in 1981	3 7.73 in 2009	3 0.12 in 1995
4 80.8 in 2012	4 74.6 in 1980	4 7.70 in 1959	4 0.40 in 1972
5 80.2 in 2019	5 74.7 in 1977	5 6.41 in 1996	0.40 in 1967
6 79.8 in 2011	6 75.2 in 1973	6 5.86 in 1976	6 0.41 in 2007
7 78.9 in 1996	7 75.3 in 1963	7 5.61 in 1975	0.41 in 2001
8 78.8 in 1998	8 75.4 in 1983	8 5.13 in 1991	8 0.46 in 2008
9 78.7 in 2002	9 75.5 in 1970	9 5.12 in 2003	9 0.54 in 1999
10 78.6 in 2000	10 75.6 in 2005	10 4.98 in 1962	10 0.56 in 1973
...
33 76.8 in 2020	28 76.8 in 2020	27 3.08 in 2020	40 3.08 in 2020
in 2016	in 2016		

Normal Temperature for May at VNCf1 = 76.8°

Normal Rainfall for May at VNCf1 = 2.27 in.

Warmest Springs	Coollest Springs	Wettest Springs	Driest Springs
1 76.4 in 2012	1 68.8 in 1988	1 21.37 in 1957	1 0.79 in 1967
2 75.9 in 2003	2 69.3 in 1962	2 16.90 in 1959	2 1.87 in 1981
3 75.8 in 2015	3 69.5 in 1993	3 16.33 in 1969	3 1.94 in 1974
4 75.4 in 2011	4 69.7 in 1960	4 16.16 in 2018	4 2.58 in 1963
5 75.1 in 1995	5 69.8 in 1987	5 16.05 in 1984	5 2.83 in 1971
6 74.9 in 1997	69.8 in 1983	6 15.10 in 1983	6 2.92 in 1977
7 74.7 in 2002	7 69.9 in 1986	7 14.79 in 1987	7 3.30 in 2006
8 74.5 in 2020	8 70.0 in 2005	8 13.99 in 1962	3.30 in 1989
74.5 in 1994	9 70.1 in 1981	9 13.92 in 1996	9 3.36 in 1979
10 74.4 in 2019	10 70.4 in 1971	10 13.86 in 1991	10 3.62 in 1999
	70.4 in 1958
		41 6.05 in 2020	26 6.05 in 2020

Normal Temperature for Spring at VNCf1 = 71.7°

Normal Rainfall for Spring at VNCf1 = 8.56 in.

Wauchula 2 N (Records began January 1933):

Warmest Mays	Coollest Mays	Wettest Mays	Driest Mays
1 80.1 in 2009	1 73.0 in 1992	1 13.94 in 2018	1 0.00 in 2000
2 79.8 in 1975	2 73.1 in 2013	2 11.32 in 1954	2 0.01 in 1965
3 79.7 in 1995	3 74.1 in 2001	3 11.31 in 1957	3 0.29 in 1945
4 79.4 in 1990	4 74.3 in 1960	4 10.61 in 1963	4 0.30 in 2015
79.4 in 1933	74.3 in 1940	5 9.37 in 2009	5 0.43 in 1953
6 79.2 in 1935	6 74.4 in 2007	6 8.39 in 1976	6 0.48 in 2008
7 78.9 in 2008	74.4 in 1999	7 7.82 in 1968	7 0.55 in 1941
78.9 in 1991	8 74.5 in 1982	8 7.53 in 1934	8 0.56 in 1949
9 78.5 in 1946	9 74.6 in 1954	9 7.42 in 1972	9 0.65 in 1995
10 78.4 in 2019	10 74.7 in 2011	10 7.17 in 1939	10 0.70 in 2004
78.4 in 1978	74.7 in 1941
78.4 in 1967	12 74.8 in 1951	26 5.33 in 2020	63 5.33 in 2020
	13 75.0 in 1993		
	14 75.1 in 2020		

Normal Temperature for May at WAUF1 = 77.8°

Normal Rainfall for May at WAUF1 = 3.09 in.

Warmest Springs	Coollest Springs	Wettest Springs	Driest Springs
1 75.0 in 1945	1 67.6 in 2013	1 21.37 in 1947	1 0.69 in 1945
2 74.8 in 1935	2 68.8 in 2005	2 20.73 in 1957	2 0.85 in 1967
3 74.6 in 1975	3 69.0 in 2004	3 18.24 in 1998	3 1.90 in 2006
74.6 in 1948	69.0 in 1993	4 17.01 in 2018	4 2.25 in 2000
5 74.4 in 1991	5 69.1 in 1996	5 16.98 in 1962	5 2.40 in 2004
6 74.1 in 2009	69.1 in 1983	6 16.65 in 1954	6 2.42 in 2015
74.1 in 1938	7 69.4 in 1960	7 15.78 in 1958	7 4.34 in 1981
8 74.0 in 2015	8 69.8 in 2018	8 15.60 in 1934	8 4.60 in 1974
74.0 in 1939	69.8 in 2007	9 15.14 in 1959	9 4.72 in 1949
10 73.8 in 1974	10 69.9 in 2014	10 14.19 in 1982	10 4.82 in 1946
...	69.9 in 1950
18 73.1 in 2020		41 10.06 in 2020	48 10.06 in 2020
73.1 in 1964			

Normal Temperature for Spring at WAUF1 = 72.3°

Normal Rainfall for Spring at WAUF1 = 9.62 in.

Arcadia (Records began November 1899) :

Warmest Mays	Coollest Mays	Wettest Mays	Driest Mays
1 80.6 in 1912	1 73.5 in 1988	1 15.72 in 1987	1 0.01 in 1965
2 80.2 in 1991	2 73.9 in 1970	2 12.63 in 2018	2 0.30 in 1941
80.2 in 1938	73.9 in 1940	3 11.71 in 1923	3 0.40 in 2000
4 79.6 in 1905	4 74.0 in 1931	4 9.57 in 1958	0.40 in 1989
5 79.2 in 1935	74.0 in 1928	5 9.47 in 1925	5 0.57 in 1902
79.2 in 1933	6 74.2 in 1960	6 9.08 in 1954	6 0.78 in 1953
79.2 in 1902	7 74.3 in 1941	7 8.19 in 1963	7 0.82 in 1940
8 79.0 in 1995	8 74.5 in 1982	8 7.99 in 1959	8 0.92 in 1983
9 78.9 in 2019	74.5 in 1977	9 7.88 in 1910	9 0.94 in 1927
78.9 in 2012	10 74.7 in 1989	10 7.84 in 1912	10 0.99 in 1917
78.9 in 2003	74.7 in 1926
78.9 in 1953	74.7 in 1921	55 3.62 in 2020	58 3.62 in 2020
...	...		
79 75.8 in 2020	28 75.8 in 2020		
in 1986	in 1986		

Normal Temperature for May at ARCF1 = 76.4°
 Normal Rainfall for May at ARCF1 = 3.57 in.

Warmest Springs	Coollest Springs	Wettest Springs	Driest Springs
1 76.8 in 1912	1 67.8 in 1931	1 25.68 in 1987	1 2.32 in 1902
2 75.5 in 1908	2 69.1 in 2010	2 19.95 in 1982	2 2.66 in 2006
3 75.1 in 1945	3 69.2 in 1988	3 19.46 in 1958	3 2.70 in 1965
4 75.0 in 2015	69.2 in 1926	4 19.41 in 1947	4 3.31 in 2001
75.0 in 1929	5 69.4 in 1996	5 17.07 in 1957	5 3.36 in 1989
6 74.9 in 1948	69.4 in 1986	6 16.99 in 1930	6 3.38 in 1945
7 74.5 in 2003	7 69.6 in 1901	7 16.96 in 2018	7 3.40 in 1949
74.5 in 1935	8 69.7 in 2013	8 16.25 in 1954	8 3.51 in 1917
9 74.3 in 1938	69.7 in 1987	9 16.17 in 1959	9 3.75 in 1938
10 74.1 in 1913	69.7 in 1971	10 15.44 in 1923	10 3.81 in 1977
...	69.7 in 1960
19 73.6 in 2020		43 9.26 in 2020	66 9.26 in 2020
in 1911			
in 1909			

Normal Temperature for Spring at ARCF1 = 71.0°
 Normal Rainfall for Spring at ARCF1 = 9.30 in.

Archbold Bio Stn (Records began January 1969) :

Warmest Mays	Coollest Mays	Wettest Mays	Driest Mays
1 79.1 in 1991	1 71.2 in 1992	1 14.46 in 2018	1 1.01 in 1983
2 79.0 in 1995	2 73.3 in 2013	2 7.99 in 2020	2 1.07 in 2015
3 78.5 in 2017	3 73.6 in 1988	3 7.61 in 1996	1.07 in 1993
4 78.2 in 2010	4 73.7 in 1993	4 7.23 in 2016	4 1.09 in 2005
5 78.1 in 2019	5 73.8 in 1982	5 7.00 in 1978	5 1.17 in 2000
6 78.0 in 1990	6 73.9 in 1983	6 6.97 in 1975	6 1.24 in 2007
78.0 in 1975	7 74.1 in 2005	7 6.96 in 1982	7 1.46 in 2006
8 77.3 in 2003	8 74.2 in 2006	8 6.75 in 2014	8 1.56 in 1986
9 77.2 in 2012	9 74.4 in 1977	9 6.53 in 1977	9 1.72 in 1990
77.2 in 2002	10 74.5 in 2007	10 6.52 in 1999	10 2.05 in 1995
	74.5 in 2001		
	74.5 in 1999		
...	...		
33 75.4 in 2020	19 75.4 in 2020		
in 2014	in 2014		

Normal Temperature for May at ACHF1 = 75.3°
 Normal Rainfall for May at ACHF1 = 3.41 in.

Warmest Springs	Coollest Springs	Wettest Springs	Driest Springs
1 75.3 in 2015	1 67.8 in 1983	1 18.74 in 2018	1 2.36 in 2006
2 74.0 in 1991	2 68.2 in 1993	2 17.63 in 1982	2 3.56 in 1971
3 73.5 in 2020	3 68.4 in 2013	3 16.84 in 2010	3 4.08 in 2007
73.5 in 2003	4 68.5 in 1987	4 15.34 in 2003	4 4.22 in 1981
73.5 in 1995	5 68.6 in 1992	5 14.26 in 1984	5 4.85 in 1990
6 73.3 in 1975	6 68.7 in 2005	6 14.01 in 1970	6 4.93 in 2002
7 73.1 in 2017	68.7 in 1986	7 13.53 in 1996	7 4.96 in 2017
73.1 in 2002	8 69.1 in 2010	8 13.41 in 1969	8 5.09 in 2000
9 73.0 in 1997	69.1 in 1988	9 12.51 in 1991	9 6.60 in 2009
10 72.9 in 1974	10 69.3 in 2004	10 12.24 in 1973	10 6.85 in 1974
		11 12.12 in 1997	
		12 11.52 in 2020	

Normal Temperature for Spring at ACHF1 = 70.4°
 Normal Rainfall for Spring at ACHF1 = 9.43 in.

Punta Gorda Area (Records began May 1914) :

Warmest Mays	Coollest Mays	Wettest Mays	Driest Mays
1 80.9 in 1953	1 74.0 in 1917	1 15.98 in 2018	1 0.01 in 1927
2 80.7 in 1946	2 74.1 in 1928	2 10.13 in 1946	2 0.07 in 1992
3 80.5 in 1995	3 74.9 in 1992	3 9.45 in 1991	3 0.40 in 1965
4 80.2 in 1991	4 75.0 in 1916	4 9.27 in 1959	4 0.41 in 2000
5 79.9 in 2012	5 75.1 in 1920	5 8.24 in 1968	5 0.42 in 2004
79.9 in 1933	6 75.2 in 2001	6 8.20 in 1963	6 0.45 in 1953
7 79.7 in 2010	75.2 in 1970	7 7.77 in 1972	7 0.54 in 2001
79.7 in 1962	75.2 in 1925	8 7.34 in 1979	0.54 in 1967
9 79.6 in 1956	9 75.6 in 1977	9 7.29 in 1923	9 0.66 in 1998
10 79.5 in 1935	75.6 in 1941	10 7.18 in 1932	0.66 in 1941
...
63 77.0 in 2020	77.0 in 2020	29 4.79 in 2020	75 4.79 in 2020
in 1986	in 1986		
in 1969	in 1969		
in 1967	in 1967		

Normal Temperature for May at PGD = 77.4°
 Normal Rainfall for May at PGD = 2.60 in.

Warmest Springs	Coollest Springs	Wettest Springs	Driest Springs
1 77.5 in 1945	1 68.3 in 1915	1 19.21 in 1957	1 0.69 in 1967
2 76.5 in 1948	2 68.8 in 1916	2 18.61 in 1947	2 1.20 in 2006
3 76.1 in 1953	3 69.4 in 1931	3 17.66 in 2018	3 1.82 in 2000
4 76.0 in 1946	4 70.2 in 1971	4 17.41 in 1930	4 2.10 in 1971
5 75.7 in 1944	5 70.5 in 1941	5 15.87 in 1970	5 2.14 in 1981
6 75.6 in 2015	6 70.8 in 2005	6 15.85 in 2010	6 2.24 in 2007
75.6 in 1991	7 70.9 in 1993	7 15.70 in 1959	7 2.27 in 1945
8 75.1 in 1994	70.9 in 1969	8 14.94 in 2003	8 3.31 in 1935
9 75.0 in 2012	9 71.1 in 2010	9 14.42 in 1931	9 3.45 in 1975
75.0 in 1929	71.1 in 2004	10 14.14 in 1991	10 3.55 in 1974
11 74.9 in 1997	71.1 in 1983
12 74.8 in 2020		36 8.81 in 2020	62 8.81 in 2020

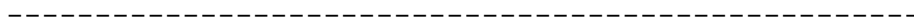
Normal Temperature for Spring at PGD = 72.6°
 Normal Rainfall for Spring at PGD = 8.34 in.

Fort Myers Area (Records began January 1902) :

Warmest Mays	Coollest Mays	Wettest Mays	Driest Mays
1 82.0 in 1995	1 74.3 in 1917	1 12.77 in 2018	1 0.20 in 2001
2 81.2 in 2010	2 74.5 in 1941	2 10.32 in 1968	2 0.34 in 1994
3 81.1 in 2012	3 74.8 in 1921	3 8.73 in 1980	0.34 in 1962
4 80.8 in 1991	4 74.9 in 1928	4 8.49 in 1925	4 0.41 in 1953
5 80.7 in 1975	5 75.0 in 1970	8.49 in 1911	5 0.47 in 2004
6 80.6 in 2017	6 75.1 in 1903	6 8.48 in 1991	6 0.50 in 1964
7 80.5 in 2019	7 75.3 in 1940	7 8.42 in 1922	7 0.54 in 2010
80.5 in 2008	75.3 in 1931	8 8.05 in 1989	8 0.62 in 1988
80.5 in 2003	75.3 in 1918	9 7.97 in 1957	0.62 in 1983
10 80.4 in 1994	10 75.5 in 1925	10 7.82 in 1929	10 0.71 in 1903
80.4 in 1990	
80.4 in 1989		23 6.29 in 2020	97 6.29 in 2020
...	...		
33 79.0 in 2020	85 79.0 in 2020		
in 2000	in 2000		
in 1979	in 1979		

Normal Temperature for May at FMY = 79.0°

Normal Rainfall for May at FMY = 2.65 in.



Warmest Springs	Coollest Springs	Wettest Springs	Driest Springs
1 77.9 in 2015	1 69.4 in 1931	1 24.94 in 1970	1 1.89 in 1945
2 77.8 in 2020	2 70.0 in 1915	2 18.71 in 1958	2 2.18 in 1967
3 77.0 in 2012	3 70.2 in 1941	3 18.23 in 1947	3 2.36 in 2006
4 76.9 in 1997	4 70.5 in 1983	4 17.77 in 1930	4 2.44 in 1902
5 76.6 in 1991	5 70.8 in 1960	5 16.85 in 1933	5 2.54 in 1974
6 76.4 in 2002	6 71.1 in 1971	6 15.70 in 1941	6 2.69 in 2001
7 76.3 in 2003	71.1 in 1916	7 15.39 in 1957	7 3.37 in 1953
8 76.2 in 2011	71.1 in 1910	8 14.62 in 1991	8 3.42 in 1964
76.2 in 1995	9 71.2 in 1940	9 14.26 in 2018	9 3.45 in 1927
76.2 in 1994	71.2 in 1926	10 13.84 in 1980	10 3.93 in 2017
	
		60 8.02 in 2020	59 8.02 in 2020

Normal Temperature for Spring at FMY = 74.3°

Normal Rainfall for Spring at FMY = 7.71 in.

For more Climate information visit our web site at the following link:
<http://www.weather.gov/tampabay> and then go to the Climate and Past Weather
 drop down menu above the graphical forecast images.