



NOAA - National Weather Service

Tampa Bay Area

2525 14th Avenue SE, Ruskin, Florida 33570

813-645-2323 <https://weather.gov/tampabay>

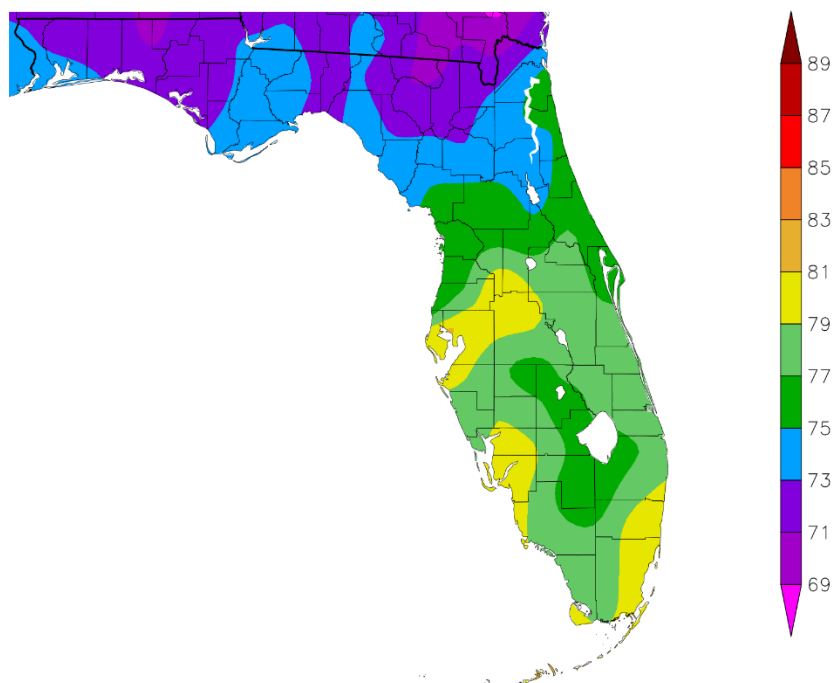
May and Spring 2021 Climate Summary for West Central and Southwest Florida

May and Spring 2021 temperatures averaged slightly below normal to about 2 degrees above normal across the region placing a few locations in the Top Ten Warmest.

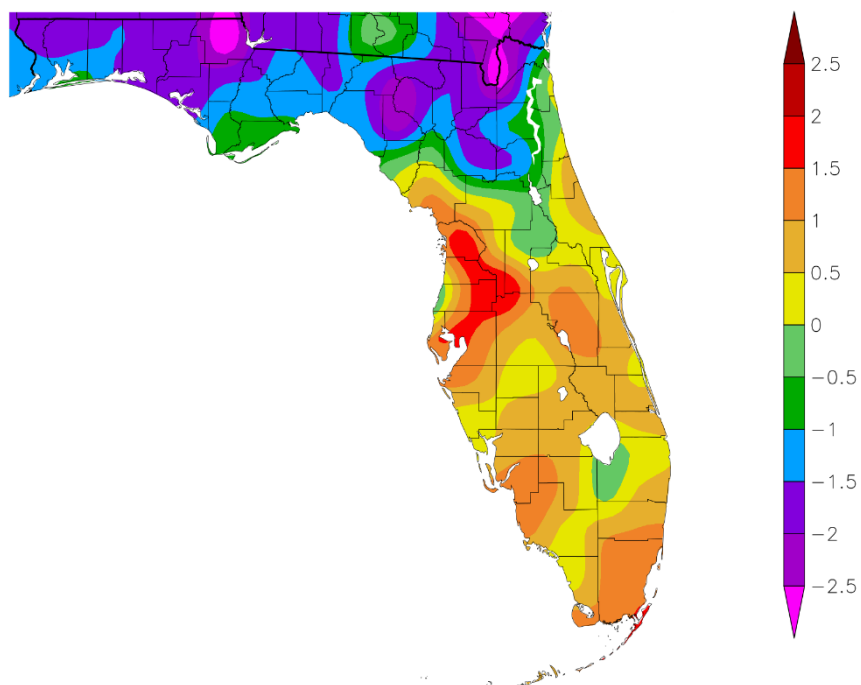
MAY TEMPERATURE RANKINGS (°F) :

Location	Rank	May 2021 Avg Temp	Normal May Temp	Dep fm Normal	Records Began
Tampa Area	5th Warmest	81.1°	79.5°	+1.6°	Apr 1890
Fort Myers Area	5th Warmest (tie)	80.7°	79.3°	+1.4°	Jan 1902
St Petersburg Area	10th Warmest (tie)	80.3°	79.4°	+0.9°	Aug 1914
Plant City	5th Warmest (tie)	79.9°	78.7°	+1.2°	Sep 1892
Winter Haven Area	14th Warmest (tie)	79.8°	79.3°	+0.5°	Mar 1941
Lakeland Area	16th Warmest (tie)	79.5°	78.2°	+1.3°	Jan 1915
Sarasota-Bradenton Area	9th Warmest	78.6°	77.8°	+0.8°	Jan 1911
Punta Gorda Area	28th Warmest (tie)	78.4°	77.9°	+0.5°	May 1914
Bartow	35th Warmest (tie)	78.2°	77.6°	+0.6°	Jun 1892
St. Leo	38th Warmest (tie)	77.8°	76.7°	+1.1°	Apr 1895
Venice	17th Warmest (tie)	77.6°	77.5°	+0.1°	May 1955
Archbold Bio Stn	15th Warmest (tie)	76.7°	76.3°	+0.4°	Jan 1969
Inverness 3 SE	28th Warmest (tie)	76.7°	74.8°	+1.9°	Jul 1948
Tarpon Springs	66th Coolest (tie)	76.7°	77.6°	-0.9°	Jan 1892
Brooksville Area	46th Warmest (tie)	76.6°	75.3°	+1.3°	Jan 1892
Wauchula 2 N	40th Warmest (tie)	76.6°	76.3°	+0.3°	Jan 1933
Myakka River St. Pk	26th Coolest (tie)	76.6°	77.4°	-0.8°	Mar 1956
Chiefland 5 ESE	21st Warmest (tie)	75.2°	74.5°	+0.7°	Jul 1956

Temperature (F)
5/1/2021 – 5/31/2021



Departure from Normal Temperature (F)
5/1/2021 – 5/31/2021

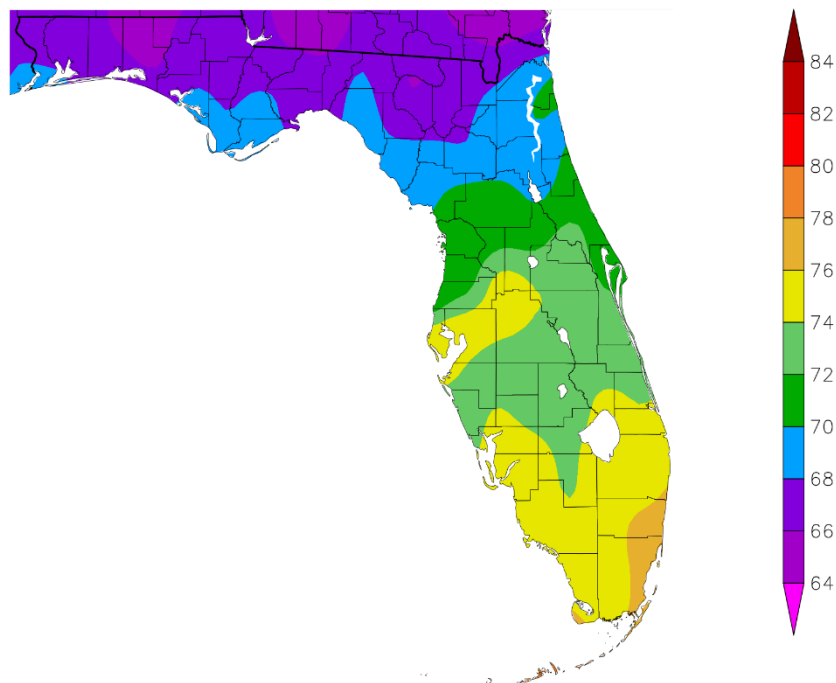


Graphics Source: NOAA Regional Climate Centers

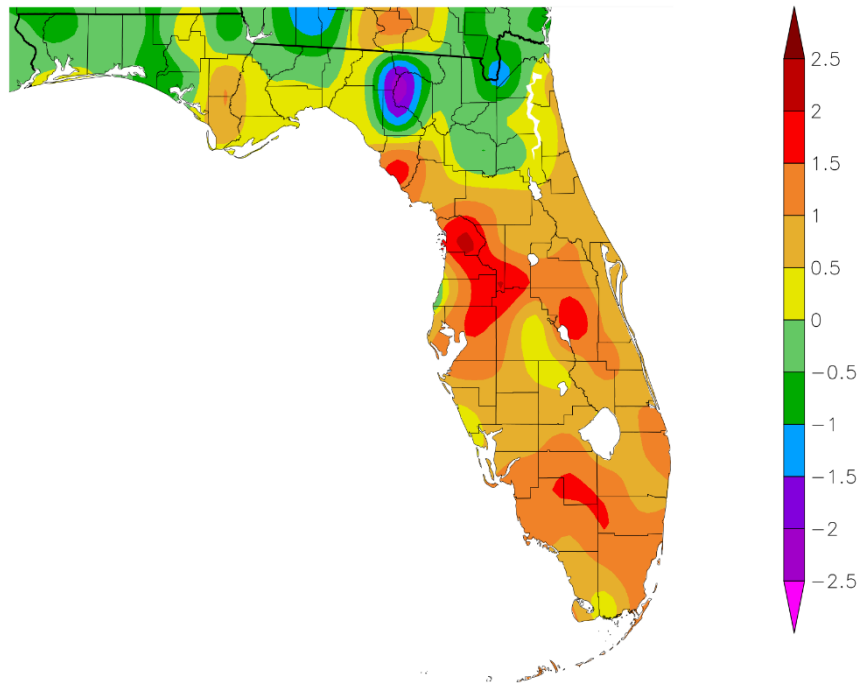
SPRING TEMPERATURE RANKINGS (°F) :

Location	Rank	Spring 2021 Avg Temp	Normal Spr Temp	Dep fm Normal	Records Began
Fort Myers Area	12th Warmest	75.9°	74.8°	+1.1°	Jan 1902
Plant City	4th Warmest	75.3°	73.6°	+1.7°	Sep 1892
Tampa Area	7th Warmest (tie)	75.3°	74.0°	+1.3°	Apr 1890
St Petersburg Area	13th Warmest (tie)	75.1°	74.2°	+0.9°	Aug 1914
Lakeland Area	9th Warmest (tie)	74.8°	73.3°	+1.5°	Jan 1915
Winter Haven Area	13th Warmest	74.7°	74.1°	+0.6°	Mar 1941
Punta Gorda Area	30th Warmest (tie)	74.0°	73.2°	+0.8°	May 1914
Bartow	27th Warmest (tie)	73.6°	72.6°	+1.0°	Jun 1892
Sarasota-Bradenton Area	15th Warmest (tie)	73.4°	72.9°	+0.5°	Jan 1911
Venice	17th Warmest (tie)	72.9°	72.6°	+0.3°	May 1955
Archbold Bio Stn	14th Warmest (tie)	72.4°	71.7°	+0.7°	Jan 1969
Wauchula 2 N	37th Warmest (tie)	72.0°	71.2°	+0.8°	Jan 1933
Myakka River St. Pk	23rd Coolest	71.9°	72.6°	-0.7°	Mar 1956
Tarpon Springs	73rd Coolest (tie)	71.6°	72.2°	-0.6°	Jan 1892
Inverness 3 SE	24th Warmest	71.0°	68.8°	+2.2°	Jul 1948
Brooksville Area	55th Warmest (tie)	70.9°	69.6°	+1.3°	Jan 1892
Chiefland 5 ESE	23rd Warmest (tie)	69.2°	68.6°	+0.6°	Jul 1956

Temperature (F)
3/1/2021 – 5/31/2021



Departure from Normal Temperature (F)
3/1/2021 – 5/31/2021

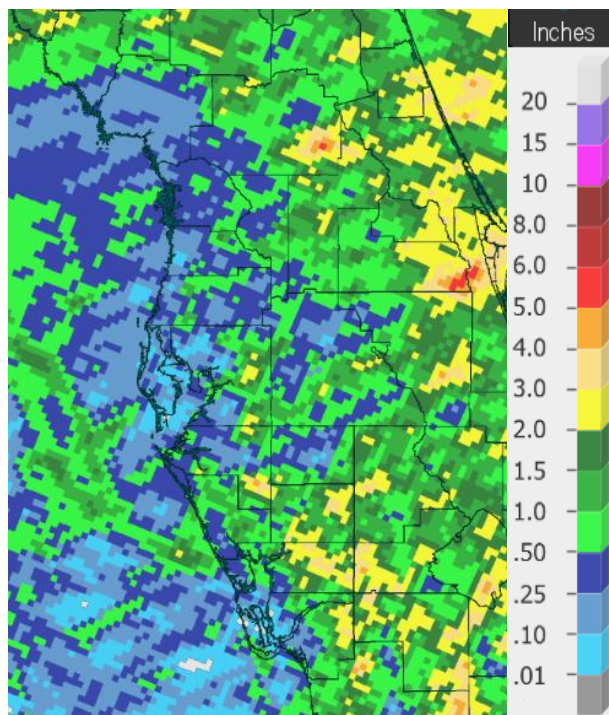


Graphics Source: NOAA Regional Climate Centers

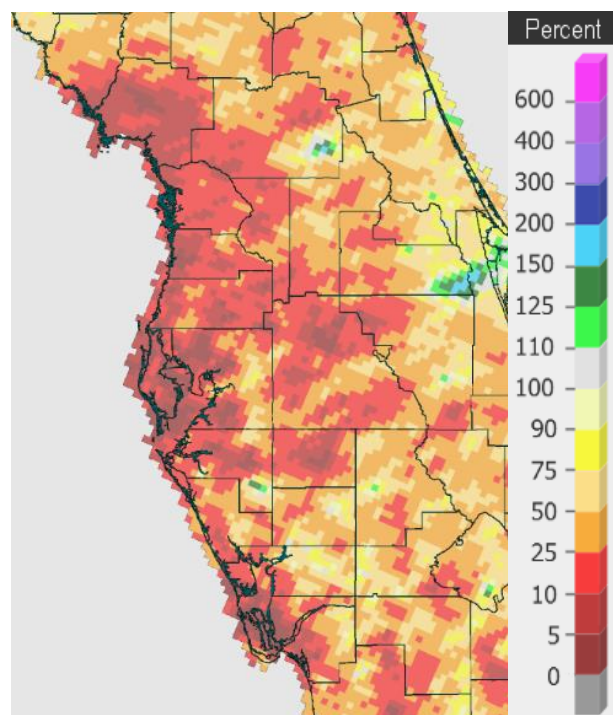
As for rainfall March was rather dry with a few sites in the Top Ten Driest. April saw a wide range of amounts, most above normal, while May ended up as one of the Top Ten Driest in many locations. For May and Spring 2021 most of the region saw below normal rainfall, with just a few isolated areas being slightly above normal.

MAY RAINFALL RANKINGS (°F):

Location	Rank	May 2021 Rain Total	Normal May Rain	Dep fm Normal	Records Began
Punta Gorda Area	23rd Driest	1.20	3.26	-2.06	May 1914
Venice	17th Driest	1.01	3.25	-2.24	May 1955
Plant City	14th Driest (tie)	0.89	4.04	-3.15	Feb 1893
Archbold Bio Stn	1st Driest	0.83	4.36	-3.53	Jan 1969
Myakka River St. Pk.	15th Driest (tie)	0.83	3.75	-2.92	Sep 1943
Wauchula 2 N	11th Driest	0.72	3.51	-2.79	Jan 1933
Brooksville Area	7th Driest	0.56	3.35	-2.79	Jan 1892
Bartow	6th Driest	0.52	2.95	-2.43	Jun 1892
Lakeland Area	2nd Driest	0.34	3.80	-3.46	Jan 1915
Inverness 3 SE	3rd Driest	0.29	3.09	-2.80	Jul 1948
Sarasota-Bradenton Area	13th Driest	0.29	2.58	-2.29	Jan 1911
Tampa Area	5th Driest (tie)	0.16	2.60	-2.44	Apr 1890
St. Petersburg Area	6th Driest	0.12	2.26	-2.14	Aug 1914
St. Leo	2nd Driest	0.08	2.98	-2.90	Apr 1895
Tarpon Springs	6th Driest	0.08	2.35	-2.27	Jan 1892
Winter Haven Area	2nd Driest	0.05	2.67	-2.62	Mar 1941
Fort Myers Area	1st Driest	0.04	3.46	-3.42	Jan 1902
Chiefland 5 ESE	1st Driest	0.00	2.78	-2.78	Jul 1956



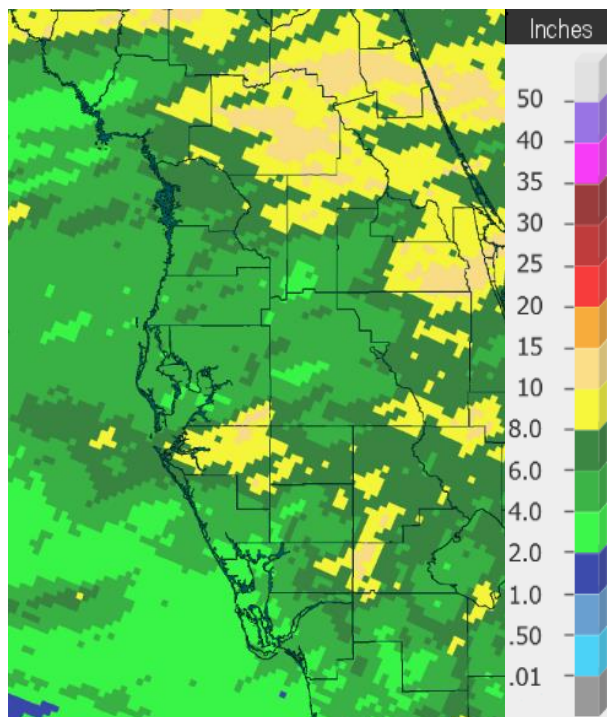
May 2021 Rainfall



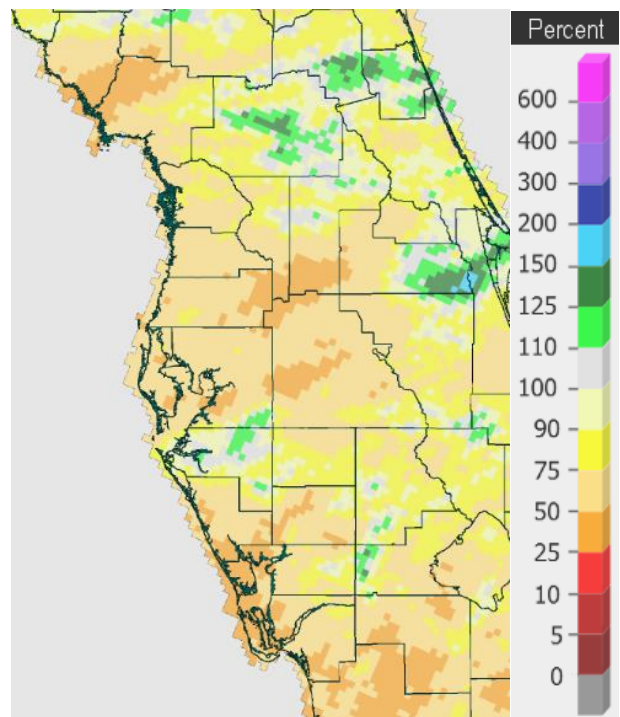
May 2021 Percent of Normal

SPRING RAINFALL RANKINGS (°F) :

Location	Spring Rank	2021 Rain Total	Normal Spr Rain	Dep fm Normal	Records Began
Archbold Bio Stn	14th Wettest	11.19	9.77	+1.42	Jan 1969
Wauchula 2 N	27th Driest	7.36	9.42	-2.06	Jan 1933
Inverness 3 SE	23rd Driest	6.84	9.07	-2.23	Jul 1948
Brooksville Area	39th Driest	6.73	8.19	-1.46	Jan 1892
Sarasota-Bradenton Area	40th Driest	6.22	7.89	-1.67	Jan 1911
Chiefland 5 ESE	14th Driest	6.01	9.56	-3.55	Jul 1956
St. Leo	21st Driest	5.68	9.22	-3.54	Apr 1895
Tarpon Springs	32nd Driest	5.16	8.12	-2.96	Jan 1892
Myakka River St. Pk.	15th Driest	4.78	9.73	-4.95	Sep 1943
Punta Gorda Area	18th Driest	4.68	7.77	-3.09	May 1914
Tampa Area	29th Driest	4.58	7.67	-3.09	Apr 1890
Venice	16th Driest	4.49	8.69	-4.20	May 1955
Lakeland Area	10th Driest	4.47	9.68	-5.21	Jan 1915
Plant City	14th Driest (tie)	4.24	9.70	-5.46	Feb 1893
Fort Myers Area	13th Driest (tie)	4.17	7.97	-3.80	Jan 1902
Winter Haven Area	7th Driest	4.01	8.21	-4.20	Mar 1941
Bartow	9th Driest	3.70	8.51	-4.81	Jun 1892
St. Petersburg Area	11th Driest	2.98	6.77	-3.79	Aug 1914



Spring 2021 Rainfall



Spring 2021 Percent of Normal

On the following pages are tables of the Top Ten Warmest, Coolest, Wettest, and Driest Mays and Springs at some official NWS locations, which includes the average/total for this May and Spring 2021 (March/April/May) where available, and the new **1991-2020** Normal (average) temperature and rainfall.

Chiefland 5 ESE (Records began July 1956):

Warmest Mays	Coolest Mays	Wettest Mays	Driest Mays
1 78.5 in 1991	1 72.3 in 1992	1 13.14 in 1976	1 0.00 in 2021
2 78.1 in 2019	2 72.5 in 2013	2 7.50 in 2010	0.00 in 2001
3 77.2 in 2017	72.5 in 2005	3 6.99 in 1959	3 0.05 in 2000
77.2 in 1959	72.5 in 1988	4 6.93 in 1966	4 0.23 in 2008
5 77.0 in 1995	5 72.6 in 1967	5 6.87 in 2014	5 0.26 in 1965
6 76.9 in 2015	72.6 in 1960	6 6.82 in 1969	6 0.62 in 1985
76.9 in 1975	7 72.8 in 2007	7 6.72 in 2018	7 0.68 in 1994
8 76.7 in 2012	72.8 in 2006	8 6.65 in 2005	8 0.76 in 2007
9 76.6 in 2018	9 72.9 in 1971	9 5.99 in 1991	9 0.82 in 1998
76.6 in 1990	10 73.0 in 2001	10 5.72 in 1980	0.82 in 1988
...	...		
21 75.2 IN 2021	42 75.2 IN 2021		
75.2 IN 2020	75.2 IN 2020		

Normal Temperature for May at CHIF1 = 74.5°

Normal Rainfall for May at CHIF1 = 2.78 in.

Warmest Springs	Coolest Springs	Wettest Springs	Driest Springs
1 73.4 in 2015	1 65.8 in 2005	1 24.94 in 1959	1 2.69 in 2007
2 72.1 in 2020	2 66.0 in 1969	2 23.30 in 1982	2 2.92 in 2000
3 72.0 in 1991	3 66.4 in 1960	3 21.65 in 1991	3 3.71 in 2006
4 71.7 in 2012	4 66.5 in 2013	4 19.46 in 2014	4 4.66 in 2002
5 71.3 in 2017	5 66.8 in 1993	5 19.45 in 1957	5 4.71 in 1989
6 70.8 in 2019	66.8 in 1971	6 19.41 in 2005	6 4.77 in 2004
70.8 in 2002	7 66.9 in 1966	7 18.33 in 1996	7 5.29 in 2017
8 70.5 in 2003	8 67.0 in 1996	8 16.64 in 2018	8 5.46 in 1994
9 70.4 in 1995	9 67.2 in 2001	9 16.28 in 1983	9 5.72 in 2019
10 70.3 in 1997	67.2 in 1962	10 16.23 in 1976	10 5.75 in 1998
...	...		5.75 in 1967
23 69.2 in 2021	32 69.2 in 2021		12 5.82 in 2013
69.2 in 1998	69.2 in 1998		13 5.90 in 1981
69.2 in 1985	69.2 in 1985		14 6.01 in 2021
69.2 in 1967	69.2 in 1967		

Normal Temperature for Spring at CHIF1 = 68.6°

Normal Rainfall for Spring at CHIF1 = 9.56 in

Inverness 3 SE (Records began July 1948):

Warmest Mays	Coollest Mays	Wettest Mays	Driest Mays
1 80.0 in 1953	1 71.6 in 1992	1 11.97 in 1976	1 0.04 in 2008
2 79.7 in 2010	2 72.3 in 1988	2 11.48 in 2009	2 0.20 in 2000
3 79.1 in 1975	3 72.6 in 1993	3 10.61 in 2018	3 0.29 in 2021
4 78.7 in 1962	4 73.4 in 2005	4 10.59 in 1959	4 0.40 in 1965
5 78.4 in 2019	5 73.6 in 2006	5 8.79 in 1979	5 0.42 in 1994
6 78.2 in 1991	6 73.7 in 1997	6 8.11 in 2012	6 0.49 in 1998
7 78.1 in 2015	7 73.9 in 2001	7 7.71 in 2014	7 0.54 in 2007
78.1 in 1959	8 74.0 in 2007	8 7.33 in 1984	8 0.74 in 1997
9 78.0 in 1955	74.0 in 1999	9 7.27 in 1952	0.74 in 1977
10 77.9 in 2012	10 74.2 in 1982	10 6.92 in 1982	10 0.78 in 2001
	74.2 in 1976		
...	...		
28 76.7 in 2021	36 76.7 in 2021		
76.7 in 2011	76.7 in 2011		
76.7 in 2009	76.7 in 2009		

Normal Temperature for May at INVFl = 74.8°

Normal Rainfall for May at INVFl = 3.09 in.

Warmest Springs	Coollest Springs	Wettest Springs	Driest Springs
1 74.0 in 2015	1 66.3 in 1993	1 24.95 in 1959	1 1.96 in 1967
2 73.7 in 1953	2 66.9 in 1992	2 21.14 in 1960	2 2.76 in 1977
3 73.5 in 1967	3 67.1 in 1996	3 20.75 in 1982	3 3.22 in 2000
4 73.1 in 1963	4 67.2 in 1988	4 17.63 in 2018	4 3.60 in 1994
5 73.0 in 2020	5 67.8 in 2018	5 17.36 in 2014	5 4.03 in 2013
6 72.9 in 2012	6 68.1 in 2001	6 17.22 in 1991	6 4.05 in 2007
7 72.5 in 1965	7 68.3 in 2007	7 15.78 in 1987	7 4.24 in 2019
8 72.2 in 1974	8 68.7 in 2004	15.78 in 1976	8 4.47 in 2004
9 72.1 in 2002	68.7 in 1999	9 15.34 in 1958	9 4.63 in 1955
72.1 in 1991	10 69.1 in 2006	10 14.19 in 1952	10 4.67 in 1999
72.1 in 1954	
...	...	49 6.84 in 2021	23 6.84 in 2021
24 71.0 in 2021	39 71.0 in 2021		

Normal Temperature for Spring at INVFl = 68.8°

Normal Rainfall for Spring at INVFl = 9.07 in.

Brooksville Area (Records began January 1892):

Warmest Mays	Coollest Mays	Wettest Mays	Driest Mays
1 80.7 in 1905	1 72.5 in 2005	1 16.27 in 1976	1 Trace in 1977
2 80.6 in 1927	2 72.8 in 1917	2 15.57 in 2009	2 0.19 in 1926
3 80.3 in 1933	3 73.1 in 2001	3 12.25 in 2018	3 0.23 in 1949
4 79.6 in 1995	4 73.2 in 1924	4 12.20 in 1923	4 0.29 in 2000
5 79.4 in 1899	73.2 in 1920	5 9.54 in 2014	5 0.45 in 1951
6 79.2 in 1929	6 73.4 in 1923	6 9.25 in 1906	6 0.47 in 1948
7 79.1 in 1962	7 73.6 in 1999	7 9.15 in 1912	7 0.56 in 2021
8 79.0 in 1975	8 73.7 in 1925	8 8.71 in 1921	8 0.57 in 1908
79.0 in 1902	9 73.8 in 2006	9 8.18 in 1957	9 0.60 in 1899
10 78.7 in 2019	73.8 in 1954	10 7.92 in 1919	10 0.68 in 1910
78.7 in 1953			
78.7 in 1935			
...	...		
46 76.6 in 2021	66 76.6 in 2021		
76.6 in 1934	76.6 in 1934		
76.6 in 1910	76.6 in 1910		

Normal Temperature for May at BKV = 75.3°

Normal Rainfall for May at BKV = 3.35 in.

Warmest Springs	Coollest Springs	Wettest Springs	Driest Springs
1 75.2 in 1929	1 66.1 in 2005	1 22.97 in 1959	1 1.20 in 1898
2 75.0 in 1945	2 67.6 in 2004	2 21.84 in 1960	2 1.57 in 2000
3 74.4 in 1927	67.6 in 1926	3 21.28 in 1991	3 2.20 in 1977
4 74.3 in 2015	67.6 in 1892	4 20.07 in 1928	2.20 in 1945
74.3 in 1935	5 67.8 in 1924	5 19.69 in 1976	5 2.35 in 2006
6 74.2 in 2020	6 68.0 in 2010	6 19.67 in 1900	6 2.58 in 1910
7 74.0 in 1948	7 68.1 in 1998	7 18.83 in 2018	7 3.25 in 1908
8 73.6 in 1938	8 68.2 in 2013	8 18.78 in 1982	8 3.56 in 1967
9 73.3 in 1994	9 68.3 in 2001	9 18.54 in 1987	9 3.65 in 2017
10 73.2 in 1905	68.3 in 1999	10 18.26 in 1957	10 3.67 in 1897
...
55 70.9 in 2021	46 70.9 in 2021	91 6.73 in 2021	39 6.73 in 2021
70.9 in 1978	70.9 in 1978		
70.9 in 1962	70.9 in 1962		

Normal Temperature for Spring at BKV = 69.6°

Normal Rainfall for Spring at BKV = 8.19 in.

St. Leo (Records began April 1895):

Warmest Mays	Coollest Mays	Wettest Mays	Driest Mays
1 81.3 in 1995	1 71.7 in 1928	1 16.81 in 1979	1 0.03 in 2000
2 80.6 in 1899	2 72.3 in 1921	2 14.37 in 1923	2 0.08 in 2021
3 80.2 in 1953	3 73.0 in 1923	3 11.64 in 2009	3 0.15 in 2008
4 80.1 in 2003	4 73.1 in 1931	4 10.33 in 1976	4 0.17 in 1953
5 79.7 in 2000	5 73.6 in 1917	5 10.06 in 2018	5 0.28 in 1965
6 79.6 in 1896	6 73.7 in 1940	6 9.43 in 1919	6 0.40 in 1985
7 79.4 in 1962	7 73.8 in 1920	7 9.23 in 1963	7 0.51 in 1914
8 79.3 in 1985	8 73.9 in 1992	8 8.64 in 1905	8 0.78 in 2001
79.3 in 1902	9 74.1 in 1918	9 8.63 in 1957	9 0.84 in 1998
10 79.2 in 2019	10 74.2 in 1903	10 8.28 in 1921	10 0.86 in 1927
79.2 in 1975			
...	...		
38 77.8 in 2021	88 77.8 in 2021		
77.8 in 1949	77.8 in 1949		
77.8 in 1895	77.8 in 1895		

Normal Temperature for May at STLf1 = 76.7°

Normal Rainfall for May at STLf1 = 2.98 in.

Warmest Springs	Coollest Springs	Wettest Springs	Driest Springs
1 75.2 in 1948	1 65.6 in 1931	1 24.63 in 1987	1 1.12 in 2000
2 74.9 in 2002	2 67.9 in 1915	2 21.67 in 1979	2 1.83 in 1967
3 74.8 in 1945	3 68.0 in 1928	3 21.01 in 1960	3 2.87 in 1898
4 74.7 in 2003	4 68.5 in 1930	4 20.57 in 1900	4 3.20 in 1904
5 74.6 in 2015	5 69.0 in 1940	5 20.48 in 1959	5 3.32 in 1977
6 74.5 in 1908	6 69.2 in 1916	6 20.01 in 1953	6 3.96 in 1999
7 74.4 in 1995	7 69.3 in 2013	7 19.13 in 1991	7 4.03 in 1908
8 74.2 in 2020	69.3 in 1971	8 18.77 in 1928	8 4.10 in 1914
74.2 in 1953	69.3 in 1969	9 18.34 in 1957	9 4.19 in 1910
10 74.1 in 1994	10 69.4 in 1992	10 17.99 in 2018	10 4.46 in 2006
	69.4 in 1926
	69.4 in 1920	106 5.68 in 2021	21 5.68 in 2021

Average Temperature for Spring 2021 = N/A, Several Missing Days in March

Normal Temperature for Spring at STLf1 = 71.5°

Normal Rainfall for Spring at STLf1 = 9.22 in.

Tarpon Springs (Records began January 1892):

Warmest Mays	Coollest Mays	Wettest Mays	Driest Mays
1 82.1 in 1995	1 71.7 in 1939	1 15.17 in 1979	1 0.00 in 2001
2 80.6 in 2019	2 72.6 in 1897	2 10.14 in 1991	0.00 in 2000
80.6 in 1991	3 72.8 in 1917	3 10.13 in 1976	3 Trace in 1927
4 80.3 in 1933	4 73.6 in 1894	4 9.38 in 1946	4 0.01 in 2007
5 80.0 in 1996	5 74.0 in 1928	5 8.18 in 1921	5 0.03 in 1965
6 79.8 in 2010	6 74.1 in 1992	6 7.70 in 1969	6 0.08 in 2021
7 79.6 in 2003	74.1 in 1941	7 7.17 in 1957	7 0.11 in 1949
8 79.3 in 1953	74.1 in 1921	8 6.84 in 1915	8 0.13 in 1899
79.3 in 1943	74.1 in 1903	9 6.79 in 2018	9 0.14 in 1994
10 79.2 in 1994	74.1 in 1892	10 6.53 in 2012	10 0.15 in 1953
79.2 in 1990			
...	...		
57 76.7 in 2021	66 76.7 in 2021		
76.7 in 2011	76.7 in 2011		
76.7 in 1983	76.7 in 1983		
76.7 in 1959	76.7 in 1959		
76.7 in 1957	76.7 in 1957		

Normal Temperature for May at TRPF1 = 77.6°

Normal Rainfall for May at TRPF1 = 2.35 in.

Warmest Springs	Coollest Springs	Wettest Springs	Driest Springs
1 75.5 in 1948	1 66.9 in 1940	1 22.38 in 1959	1 0.97 in 1898
2 75.4 in 2020	2 67.5 in 1915	2 20.20 in 1979	2 1.40 in 2000
75.4 in 2015	3 68.0 in 1960	3 19.83 in 1991	3 1.43 in 2006
4 75.0 in 1995	68.0 in 1931	4 18.91 in 1987	4 1.47 in 1967
75.0 in 1991	5 68.3 in 1971	5 18.30 in 1957	5 1.86 in 1908
6 74.9 in 1929	6 68.7 in 1916	6 18.26 in 1942	6 2.81 in 1990
7 74.8 in 1997	7 68.8 in 1969	7 17.99 in 1960	7 2.82 in 1977
8 74.4 in 1994	68.8 in 1941	8 16.73 in 1900	8 2.83 in 1945
74.4 in 1945	9 68.9 in 1900	9 15.71 in 1983	9 3.21 in 1927
10 74.1 in 2019	10 69.0 in 1906	10 15.58 in 1931	10 3.22 in 2017
...
47 71.6 in 2021	73 71.6 in 2021	98 5.16 in 2021	32 5.16 in 2021
71.6 in 2001	71.6 in 2001		
71.6 in 1973	71.6 in 1973		
71.6 in 1897	71.6 in 1897		

Normal Temperature for Spring at TRPF1 = 72.2°

Normal Rainfall for Spring at TRPF1 = 8.12 in.

Tampa Area (Records began April 1890):

Warmest Mays	Coollest Mays	Wettest Mays	Driest Mays
1 81.7 in 1995	1 73.8 in 1891	1 17.64 in 1979	1 Trace in 2001
2 81.6 in 2019	2 74.2 in 1992	2 9.41 in 1921	2 0.02 in 2000
3 81.5 in 1975	3 74.3 in 1928	3 9.11 in 2009	3 0.07 in 1994
4 81.2 in 1991	4 74.4 in 1982	4 8.54 in 2014	4 0.10 in 1992
5 81.1 in 2021	5 74.5 in 1897	5 8.13 in 1976	5 0.16 in 2021
6 81.0 in 2017	6 74.7 in 1940	6 7.73 in 2018	0.16 in 1941
7 80.9 in 2010	74.7 in 1917	7 7.55 in 1959	7 0.17 in 1973
8 80.7 in 2012	8 74.8 in 1921	8 7.21 in 1957	8 0.22 in 1985
9 80.5 in 2015	74.8 in 1903	9 6.92 in 1894	9 0.24 in 1989
80.5 in 1990	10 74.9 in 1923	10 6.88 in 1991	10 0.31 in 1940

Normal Temperature for May at TPA = 79.5°

Normal Rainfall for May at TPA = 2.60 in.

Warmest Springs	Coollest Springs	Wettest Springs	Driest Springs
1 77.1 in 2015	1 68.3 in 1915	1 25.67 in 1959	1 0.61 in 1898
2 76.6 in 2012	2 68.5 in 1931	2 20.78 in 1957	2 0.86 in 2000
3 76.2 in 2020	68.5 in 1901	3 20.62 in 1979	3 1.29 in 1967
4 76.0 in 2017	4 68.8 in 1969	4 19.91 in 1930	4 2.17 in 1945
5 75.4 in 1991	5 69.1 in 1971	5 17.54 in 1931	5 2.32 in 1977
75.4 in 1945	6 69.2 in 1993	6 15.26 in 1987	6 2.46 in 2006
7 75.3 in 2021	7 69.4 in 1992	7 14.45 in 1983	7 2.64 in 1999
75.3 in 2002	69.4 in 1926	8 14.38 in 2014	8 2.74 in 1989
9 75.1 in 2019	9 69.6 in 1983	9 14.31 in 1924	9 2.98 in 1985
10 74.9 in 2011	69.6 in 1940	10 13.73 in 1960	10 3.06 in 2017
	69.6 in 1916
	69.6 in 1891	104 4.58 in 2021	29 4.58 in 2021

Normal Temperature for Spring at TPA = 74.0°

Normal Rainfall for Spring at TPA = 7.67 in.

St Petersburg Area (Records began August 1914):

Warmest Mays	Coollest Mays	Wettest Mays	Driest Mays
1 82.0 in 2010	1 75.3 in 1928	1 10.64 in 1959	1 0.00 in 1953
2 81.5 in 2015	75.3 in 1921	2 9.68 in 2018	2 Trace in 2007
3 81.3 in 1995	3 75.4 in 1992	3 9.21 in 1979	3 0.02 in 2000
4 81.2 in 1933	75.4 in 1917	4 8.17 in 1976	4 0.04 in 2001
5 80.9 in 2003	5 75.7 in 1940	5 7.85 in 1925	5 0.05 in 1941
80.9 in 1991	6 75.8 in 1954	6 7.16 in 1991	6 0.12 in 2021
7 80.8 in 1975	7 76.2 in 1920	7 7.11 in 1915	7 0.18 in 1945
80.8 in 1935	8 76.4 in 1993	8 7.05 in 1921	8 0.19 in 1973
9 80.4 in 2012	9 76.5 in 1988	9 6.99 in 2009	9 0.22 in 1992
10 80.3 in 2021	10 76.6 in 1960	10 6.08 in 1957	10 0.24 in 1994
80.3 in 2000	76.6 in 1951		

Normal Temperature for May at SPG = 79.4°

Normal Rainfall for May at SPG = 2.26 in.

Warmest Springs	Coollest Springs	Wettest Springs	Driest Springs
1 77.7 in 2015	1 69.5 in 1915	1 26.45 in 1959	1 0.88 in 1945
2 76.7 in 2020	2 70.1 in 1931	2 17.88 in 1957	2 1.42 in 2000
76.7 in 2012	3 70.2 in 1993	3 17.20 in 1930	3 1.53 in 2006
4 75.9 in 1948	70.2 in 1983	4 17.18 in 1931	4 1.73 in 1977
75.9 in 1935	5 70.7 in 1996	5 16.31 in 1987	5 2.48 in 1967
75.9 in 1929	70.7 in 1940	6 15.65 in 1982	6 2.73 in 2007
7 75.8 in 2002	70.7 in 1926	7 15.17 in 1960	7 2.84 in 1938
8 75.6 in 2011	8 70.8 in 1916	8 14.50 in 2003	8 2.85 in 1949
9 75.5 in 2003	9 71.0 in 1992	9 14.03 in 1991	9 2.88 in 1999
10 75.3 in 2016	10 71.1 in 1924	10 13.98 in 1958	10 2.96 in 2002
75.3 in 1975			11 2.98 in 2021
12 75.2 in 1991			
13 75.1 in 2021			
75.1 in 1938			

Normal Temperature for Spring at SPG = 74.2°

Normal Rainfall for Spring at SPG = 6.77 in.

Plant City (Temperature Records began September 1892/Rainfall Records began February 1893):

Warmest Mays	Coolest Mays	Wettest Mays	Driest Mays
1 82.0 in 2019	1 71.3 in 1928	1 16.44 in 2009	1 0.01 in 2001
2 80.8 in 2017	2 71.9 in 1931	2 14.27 in 2018	2 0.14 in 2000
3 80.1 in 1915	3 72.0 in 1940	3 11.77 in 1991	3 0.29 in 1953
4 80.0 in 1995	4 72.4 in 1941	4 11.68 in 1979	4 0.50 in 1992
5 79.9 in 2021	5 73.0 in 1925	5 10.64 in 1923	5 0.58 in 1981
6 79.8 in 1975	6 73.6 in 1992	6 10.14 in 1957	6 0.62 in 2007
7 79.6 in 2010	7 73.9 in 1932	7 9.10 in 1905	7 0.67 in 1985
8 79.5 in 1991	8 74.0 in 1979	8 9.04 in 1976	0.67 in 1948
79.5 in 1953	74.0 in 1960	9 8.72 in 1907	9 0.72 in 1898
10 79.3 in 2012	10 74.1 in 1901	10 7.56 in 1900	10 0.75 in 1945
			11 0.82 in 1989
			0.82 in 1977
			0.82 in 1908
			14 0.89 in 2021
			0.89 in 1941

Normal Temperature for May at PLCF1 = 78.7°

Normal Rainfall for May at PLCF1 = 4.04 in.

Warmest Springs	Coolest Springs	Wettest Springs	Driest Springs
1 76.7 in 2020	1 64.9 in 1931	1 26.28 in 1959	1 1.56 in 1898
2 76.2 in 2015	2 66.8 in 1901	2 23.68 in 1957	2 1.91 in 1977
3 75.6 in 2019	3 67.0 in 1932	3 20.67 in 1991	3 2.30 in 1981
4 75.3 in 2021	4 67.9 in 1940	4 19.68 in 1960	4 2.40 in 1908
5 75.1 in 1912	5 68.0 in 1941	5 19.42 in 1987	5 2.61 in 1945
6 75.0 in 2017	6 68.1 in 1930	6 19.38 in 1900	6 2.62 in 2017
7 74.8 in 2016	7 68.9 in 1925	7 19.25 in 1933	7 3.13 in 1902
8 74.7 in 2012	8 69.0 in 1942	8 18.59 in 2009	8 3.29 in 1949
9 74.3 in 1991	69.0 in 1928	9 18.56 in 1930	9 3.47 in 1985
74.3 in 1948	10 69.1 in 1924	10 18.30 in 1931	10 3.61 in 1967
74.3 in 1945			11 3.63 in 2012
			12 3.82 in 2000
			13 3.98 in 2006
			14 4.24 in 2021
			4.24 in 2007

Normal Temperature for Spring at PLCF1 = 73.6°

Normal Rainfall for Spring at PLCF1 = 9.70 in.

Lakeland (Records began January 1915) :

Warmest Mays	Coollest Mays	Wettest Mays	Driest Mays
1 82.9 in 1995	1 73.4 in 1928	1 19.19 in 2018	1 0.13 in 1953
2 81.0 in 1996	2 74.0 in 2007	2 16.03 in 1979	2 0.34 in 2021
3 80.8 in 2019	3 74.4 in 1941	3 14.95 in 2009	3 0.37 in 2008
4 80.7 in 1991	74.4 in 1921	4 10.83 in 1923	4 0.44 in 2001
5 80.6 in 2010	5 74.8 in 1923	5 10.65 in 1991	5 0.50 in 1985
6 80.5 in 1990	6 75.1 in 1982	6 9.68 in 1957	6 0.55 in 2000
7 80.4 in 1994	75.1 in 1970	7 9.10 in 1968	0.55 in 1965
8 80.1 in 1933	8 75.2 in 1940	8 8.45 in 1922	8 0.63 in 1986
9 80.0 in 2017	75.2 in 1917	9 8.21 in 1921	9 0.89 in 1960
10 79.9 in 2015	10 75.4 in 1972	10 8.15 in 1924	10 0.92 in 1945
79.9 in 1935	75.4 in 1960		
12 79.7 in 1989	75.4 in 1931		
79.7 in 1927	75.4 in 1920		
14 79.6 in 2012			
79.6 in 1953			
16 79.5 in 2021			
79.5 in 2003			

Normal Temperature for May at LLDF1 = 78.2°

Normal Rainfall for May at LLDF1 = 3.80 in.

Warmest Springs	Coollest Springs	Wettest Springs	Driest Springs
1 76.3 in 2015	1 69.1 in 1941	1 24.87 in 1959	1 2.28 in 1945
2 76.1 in 2020	2 69.3 in 1915	2 23.85 in 2018	2 3.02 in 1981
3 76.0 in 1995	3 69.5 in 1960	3 21.98 in 1981	3 3.16 in 2000
4 75.8 in 1994	4 69.6 in 1969	4 21.14 in 1957	4 3.32 in 1967
5 75.7 in 1991	5 69.8 in 1983	5 21.03 in 1979	5 3.40 in 2017
75.7 in 1935	69.8 in 1925	6 20.64 in 1934	6 3.75 in 1977
7 75.0 in 2012	7 69.9 in 1971	7 18.56 in 1982	7 3.89 in 2006
75.0 in 1989	8 70.0 in 2007	8 18.46 in 1987	8 4.03 in 1985
9 74.8 in 2021	9 70.2 in 1926	9 17.86 in 1931	9 4.45 in 1949
74.8 in 1945	70.2 in 1924	17.86 in 1930	10 4.47 in 2021
74.8 in 1929			

Normal Temperature for Spring at LLDF1 = 73.3°

Normal Rainfall for Spring at LLDF1 = 9.68 in.

Winter Haven Area (Records began March 1941) :

Warmest Mays	Coollest Mays	Wettest Mays	Driest Mays
1 81.8 in 2019	1 74.3 in 1972	1 12.72 in 1957	1 0.03 in 2000
2 81.6 in 1995	2 74.5 in 1960	2 10.36 in 1982	2 0.05 in 2021
3 80.9 in 2015	3 74.6 in 1982	3 8.54 in 1943	3 0.49 in 1945
80.9 in 2010	4 74.9 in 1954	4 8.26 in 2009	4 0.57 in 1941
80.9 in 2003	5 75.1 in 1941	5 8.11 in 1976	5 0.58 in 1965
6 80.2 in 1990	6 75.3 in 1983	6 7.63 in 1946	6 0.71 in 2004
80.2 in 1989	7 75.4 in 1971	7 7.58 in 2018	7 0.80 in 1951
80.2 in 1953	8 75.5 in 1988	8 6.81 in 1947	8 0.81 in 1985
9 80.0 in 2017	75.5 in 1968	9 6.75 in 1975	9 0.84 in 1949
80.0 in 2012	10 75.7 in 2007	10 6.54 in 2016	10 0.88 in 1969
11 79.9 in 2009	75.7 in 1977		
79.9 in 1998	75.7 in 1973		
79.9 in 1991			
14 79.8 in 2021			
79.8 in 1985			

Normal Temperature for May at GIF = 79.3°

Normal Rainfall for May at GIF = 2.67 in.

Warmest Springs	Coollest Springs	Wettest Springs	Driest Springs
1 77.7 in 2015	1 69.1 in 1983	1 23.21 in 1957	1 1.61 in 2000
2 76.5 in 2020	2 69.5 in 1960	2 21.81 in 1959	2 2.25 in 1945
3 76.1 in 1948	3 69.8 in 1971	3 20.49 in 1982	3 2.61 in 2017
4 75.9 in 1991	69.8 in 1969	4 20.32 in 1960	4 2.94 in 1981
75.9 in 1945	5 70.1 in 1941	5 18.23 in 1947	5 3.77 in 2007
6 75.7 in 1989	6 70.4 in 1987	6 15.16 in 1991	6 3.78 in 1967
7 75.5 in 2012	70.4 in 1968	7 14.42 in 2010	7 4.01 in 2021
8 75.4 in 2019	8 70.6 in 1993	8 13.59 in 1970	8 4.08 in 2015
9 75.3 in 2003	70.6 in 1981	13.59 in 1973	9 4.17 in 2006
10 75.0 in 1995	10 70.8 in 2013	10 13.44 in 1958	10 4.39 in 1965
75.0 in 1990	70.8 in 2005		
12 74.9 in 2011	70.8 in 1988		
13 74.7 in 2021			

Normal Temperature for Spring at GIF = 74.1°

Normal Rainfall for Spring at GIF = 8.21 in.

Bartow (Records began June 1892) :

Warmest Mays	Coollest Mays	Wettest Mays	Driest Mays
1 82.9 in 2015	1 73.3 in 1928	1 17.74 in 1923	1 0.02 in 1965
2 81.4 in 1995	2 73.5 in 1913	2 13.05 in 1979	2 0.25 in 1941
3 81.1 in 2014	3 73.8 in 1941	3 12.96 in 1957	3 0.36 in 1908
81.1 in 2003	4 74.3 in 1894	4 11.42 in 2009	4 0.40 in 1992
5 81.0 in 2012	5 74.5 in 1917	5 11.16 in 1905	5 0.45 in 1951
6 80.5 in 1905	6 74.6 in 1921	6 11.15 in 1930	6 0.52 in 2021
7 80.0 in 1990	7 74.7 in 1940	7 11.04 in 1976	7 0.72 in 1955
80.0 in 1975	74.7 in 1897	8 10.35 in 1921	8 0.75 in 1949
80.0 in 1953	9 74.8 in 1992	9 9.46 in 2018	9 0.87 in 1953
10 79.8 in 1991	10 74.9 in 1982	10 9.42 in 1932	10 0.91 in 2004
79.8 in 1933			
79.8 in 1899			
...	...		
35 78.2 in 2021	87 78.2 in 2021		
78.2 in 1946	78.2 in 1946		

Normal Temperature for May at BARF1 = 77.6°

Normal Rainfall for May at BARF1 = 2.95 in.

Warmest Springs	Coollest Springs	Wettest Springs	Driest Springs
1 80.1 in 2015	1 67.8 in 1915	1 25.91 in 1959	1 2.34 in 1908
2 76.0 in 2003	2 68.2 in 1901	2 22.99 in 1930	2 2.48 in 1967
3 75.9 in 2012	3 69.3 in 1914	3 22.88 in 1957	3 2.55 in 2000
4 75.6 in 2014	4 69.6 in 1983	4 19.55 in 1934	4 3.27 in 1977
5 75.4 in 1908	5 70.1 in 1993	5 19.44 in 1923	5 3.53 in 1949
6 75.3 in 1945	6 70.5 in 1894	6 19.34 in 1905	3.53 in 1894
7 75.1 in 1991	70.5 in 1893	7 19.05 in 1947	7 3.55 in 2017
8 74.8 in 1995	8 70.6 in 1971	8 18.67 in 1991	8 3.57 in 1892
74.8 in 1948	70.6 in 1960	9 17.84 in 1979	9 3.70 in 2021
10 74.7 in 2020	70.6 in 1925	10 16.39 in 1937	10 3.77 in 1911
	70.6 in 1913		
	70.6 in 1896		
...	...		
27 73.6 in 2021	59 73.6 in 2021		
73.6 in 2019	73.6 in 2019		
73.6 in 2016	73.6 in 2016		
73.6 in 1912	73.6 in 1912		

Normal Temperature for Spring at BARF1 = 72.6°

Normal Rainfall for Spring at BARF1 = 8.51 in.

Sarasota-Bradenton Area (Records began January 1911) :

Warmest Mays	Coollest Mays	Wettest Mays	Driest Mays
1 80.7 in 2019	1 71.8 in 1917	1 9.52 in 1996	1 0.00 in 1941
80.7 in 1995	2 72.9 in 1928	2 9.39 in 1991	2 Trace in 2007
3 79.6 in 2010	3 73.1 in 1940	3 9.34 in 1978	3 0.02 in 1953
4 79.5 in 1991	4 73.4 in 1911	4 9.26 in 1957	4 0.10 in 1951
79.5 in 1990	5 73.5 in 1931	5 9.05 in 1921	0.10 in 1945
6 79.4 in 2012	73.5 in 1921	6 8.56 in 1954	6 0.13 in 1973
7 78.9 in 2017	7 73.7 in 1960	7 8.18 in 1959	7 0.15 in 1992
8 78.7 in 2003	8 74.0 in 1924	8 7.52 in 1934	0.15 in 1952
9 78.6 in 2021	9 74.1 in 1926	9 7.05 in 2014	9 0.16 in 1967
10 78.3 in 2016	10 74.2 in 1992	10 6.97 in 2018	10 0.18 in 1994
78.3 in 1950	74.2 in 1923		11 0.26 in 1927
78.3 in 1946			12 0.28 in 1965
			13 0.29 in 2021

Normal Temperature for May at SRQ = 77.8°

Normal Rainfall for May at SRQ = 2.58 in.

Warmest Springs	Coollest Springs	Wettest Springs	Driest Springs
1 75.4 in 2020	1 66.8 in 1931	1 25.80 in 1957	1 1.39 in 1967
2 75.2 in 2015	2 67.2 in 1915	2 17.97 in 1959	2 2.01 in 2006
3 75.1 in 2012	3 68.3 in 1916	3 17.92 in 1991	3 2.07 in 1977
4 74.5 in 2019	4 68.5 in 1940	4 16.60 in 1996	4 2.50 in 1945
5 74.4 in 2016	5 68.8 in 1941	5 16.55 in 1997	5 2.61 in 1981
6 74.3 in 1995	68.8 in 1926	6 15.97 in 1958	6 2.83 in 1974
7 74.0 in 1994	68.8 in 1924	7 15.17 in 1930	7 2.97 in 1956
8 73.9 in 2003	8 69.0 in 1983	8 14.97 in 1969	8 3.02 in 2007
73.9 in 2002	9 69.1 in 1971	9 14.76 in 2014	3.02 in 1949
10 73.8 in 1991	10 69.5 in 1914	10 14.20 in 1987	10 3.10 in 2000
11 73.7 in 1990	
73.7 in 1945		71 6.22 in 2021	40 6.22 in 2021
13 73.6 in 2017		6.22 in 1922	6.22 in 1922
73.6 in 1948			
15 73.4 in 2021			
73.4 in 1929			

Normal Temperature for Spring at SRQ = 72.9°

Normal Rainfall for Spring at SRQ = 7.89 in.

**Myakka River State Park (Temperature Records began March 1956/
Rainfall Records began September 1943):**

Warmest Mays	Coollest Mays	Wettest Mays	Driest Mays
1 81.3 in 1995	1 73.5 in 1960	1 15.06 in 2018	1 0.02 in 2007
2 80.1 in 2010	2 74.2 in 1992	2 12.81 in 1959	0.02 in 2000
3 79.9 in 2019	3 74.9 in 1988	3 9.17 in 2014	3 0.23 in 1985
4 79.8 in 2003	4 75.0 in 2001	4 8.85 in 1970	4 0.35 in 1953
5 79.4 in 1990	75.0 in 1993	5 7.95 in 1975	5 0.42 in 1945
6 79.3 in 1998	6 75.1 in 2013	6 7.92 in 2009	6 0.50 in 1955
7 79.2 in 1978	75.1 in 1963	7 7.73 in 2016	7 0.55 in 1994
8 79.0 in 1996	8 75.2 in 1972	8 7.55 in 1976	8 0.56 in 1973
9 78.9 in 2012	9 75.4 in 1970	9 6.02 in 1968	9 0.61 in 1951
78.9 in 1975	10 75.6 in 2020	10 5.59 in 1963	10 0.62 in 1949
...	...		11 0.63 in 1995
30 76.6 in 2021	26 76.6 in 2021		12 0.64 in 1978
76.6 in 2008	76.6 in 2008		13 0.78 in 2004
76.6 in 1986	76.6 in 1986		14 0.80 in 1992
76.6 in 1982	76.6 in 1982		15 0.83 in 2021
			0.83 in 1965

Normal Temperature for May at MKCF1 = 77.4°

Normal Rainfall for May at MKCF1 = 3.75 in.

Warmest Springs	Coollest Springs	Wettest Springs	Driest Springs
1 75.5 in 2003	1 69.1 in 1960	1 23.31 in 1959	1 1.43 in 2006
2 75.4 in 1995	2 69.8 in 1971	2 18.47 in 1987	2 1.83 in 1945
3 74.9 in 1997	69.8 in 1962	3 18.06 in 1957	3 3.01 in 1989
4 74.1 in 2012	4 70.0 in 2013	4 18.02 in 2018	4 3.44 in 1981
74.1 in 1982	5 70.4 in 1986	5 17.63 in 1993	5 3.56 in 1955
74.1 in 1975	6 70.5 in 1983	6 16.55 in 1998	6 3.80 in 2004
7 74.0 in 2019	70.5 in 1958	7 16.43 in 2014	7 4.05 in 1978
74.0 in 1990	8 70.7 in 2005	8 15.59 in 1969	8 4.12 in 1950
9 73.8 in 1994	70.7 in 1988	9 15.18 in 1970	9 4.16 in 1971
10 73.6 in 2016	10 70.8 in 1959	10 14.48 in 1982	10 4.37 in 1953
...	...		11 4.41 in 2007
30 71.9 in 2021	23 71.9 in 2021		12 4.59 in 2012
			13 4.60 in 2000
			14 4.71 in 1994
			15 4.78 in 2021

Normal Temperature for Spring at MKCF1 = 72.6°

Normal Rainfall for Spring at MKCF1 = 9.73 in.

Venice (Records began May 1955):

Warmest Mays	Coollest Mays	Wettest Mays	Driest Mays
1 82.7 in 2010	1 72.9 in 1988	1 13.39 in 2018	1 0.06 in 1994
2 81.8 in 1995	2 74.3 in 1960	2 8.57 in 1969	0.06 in 1989
3 81.3 in 2003	3 74.5 in 1981	3 7.73 in 2009	3 0.12 in 1995
4 80.8 in 2012	4 74.6 in 1980	4 7.70 in 1959	4 0.40 in 1972
5 80.2 in 2019	5 74.7 in 1977	5 6.41 in 1996	0.40 in 1967
6 79.8 in 2011	6 75.2 in 1973	6 5.86 in 1976	6 0.41 in 2007
7 78.9 in 1996	7 75.3 in 1963	7 5.61 in 1975	0.41 in 2001
8 78.8 in 1998	8 75.4 in 1983	8 5.13 in 1991	8 0.46 in 2008
9 78.7 in 2002	9 75.5 in 1970	9 5.12 in 2003	9 0.54 in 1999
10 78.6 in 2000	10 75.6 in 2005	10 4.98 in 1962	10 0.56 in 1973
11 78.5 in 1994			11 0.58 in 2004
12 78.3 in 2015			12 0.60 in 2010
13 77.9 in 2017			13 0.70 in 1988
77.9 in 1957			14 0.94 in 2000
15 77.8 in 1959			15 0.97 in 1977
16 77.7 in 1997			16 0.99 in 1985
17 77.6 in 2021			17 1.01 in 2021
77.6 in 2004			
77.6 in 1975			

Normal Temperature for May at VNCF1 = 77.5°

Normal Rainfall for May at VNCF1 = 3.25 in.

Warmest Springs	Coollest Springs	Wettest Springs	Driest Springs
1 76.4 in 2012	1 68.8 in 1988	1 21.37 in 1957	1 0.79 in 1967
2 75.9 in 2003	2 69.3 in 1962	2 16.90 in 1959	2 1.87 in 1981
3 75.8 in 2015	3 69.5 in 1993	3 16.33 in 1969	3 1.94 in 1974
4 75.4 in 2011	4 69.7 in 1960	4 16.16 in 2018	4 2.58 in 1963
5 75.1 in 1995	5 69.8 in 1987	5 16.05 in 1984	5 2.83 in 1971
6 74.9 in 1997	69.8 in 1983	6 15.10 in 1983	6 2.92 in 1977
7 74.7 in 2002	7 69.9 in 1986	7 14.79 in 1987	7 3.30 in 2006
8 74.5 in 2020	8 70.0 in 2005	8 13.99 in 1962	3.30 in 1989
74.5 in 1994	9 70.1 in 1981	9 13.92 in 1996	9 3.36 in 1979
10 74.4 in 2019	10 70.4 in 1971	10 13.86 in 1991	10 3.62 in 1999
11 73.6 in 2016	70.4 in 1958		11 3.63 in 1968
73.6 in 2000			12 4.02 in 2019
13 73.5 in 2017			13 4.32 in 2000
14 73.4 in 2010			14 4.36 in 1994
15 73.2 in 1989			15 4.39 in 1995
16 73.1 in 1964			16 4.49 in 2021
17 72.9 in 2021			
72.9 in 1967			

Normal Temperature for Spring at VNCF1 = 72.6°

Normal Rainfall for Spring at VNCF1 = 8.69 in.

Wauchula 2 N (Records began January 1933):

Warmest Mays	Coollest Mays	Wettest Mays	Driest Mays
1 80.1 in 2009	1 73.0 in 1992	1 13.94 in 2018	1 0.00 in 2000
2 79.8 in 1975	2 73.1 in 2013	2 11.32 in 1954	2 0.01 in 1965
3 79.7 in 1995	3 74.1 in 2001	3 11.31 in 1957	3 0.29 in 1945
4 79.4 in 1990	4 74.3 in 1960	4 10.61 in 1963	4 0.30 in 2015
79.4 in 1933	74.3 in 1940	5 9.37 in 2009	5 0.43 in 1953
6 79.2 in 1935	6 74.4 in 2007	6 8.39 in 1976	6 0.48 in 2008
7 78.9 in 2008	74.4 in 1999	7 7.82 in 1968	7 0.55 in 1941
78.9 in 1991	8 74.5 in 1982	8 7.53 in 1934	8 0.56 in 1949
9 78.5 in 1946	9 74.6 in 1954	9 7.42 in 1972	9 0.65 in 1995
10 78.4 in 2019	10 74.7 in 2011	10 7.17 in 1939	10 0.70 in 2004
78.4 in 1978	74.7 in 1941		11 0.72 in 2021
78.4 in 1967			
...	...		
40 76.6 in 2021	44 76.6 in 2021		
76.6 in 1986	76.6 in 1986		
76.6 in 1947	76.6 in 1947		

Normal Temperature for May at WAUF1 = 76.3°

Normal Rainfall for May at WAUF1 = 3.51 in.

Warmest Springs	Coollest Springs	Wettest Springs	Driest Springs
1 75.0 in 1945	1 67.6 in 2013	1 21.37 in 1947	1 0.69 in 1945
2 74.8 in 1935	2 68.8 in 2005	2 20.73 in 1957	2 0.85 in 1967
3 74.6 in 1975	3 69.0 in 2004	3 18.24 in 1998	3 1.90 in 2006
74.6 in 1948	69.0 in 1993	4 17.01 in 2018	4 2.25 in 2000
5 74.4 in 1991	5 69.1 in 1996	5 16.98 in 1962	5 2.40 in 2004
6 74.1 in 2009	69.1 in 1983	6 16.65 in 1954	6 2.42 in 2015
74.1 in 1938	7 69.4 in 1960	7 15.78 in 1958	7 4.34 in 1981
8 74.0 in 2015	8 69.8 in 2018	8 15.60 in 1934	8 4.60 in 1974
74.0 in 1939	69.8 in 2007	9 15.14 in 1959	9 4.72 in 1949
10 73.8 in 1974	10 69.9 in 2014	10 14.19 in 1982	10 4.82 in 1946
	69.9 in 1950
...	...	60 7.36 in 2021	27 7.36 in 2021
37 72.0 in 2021	36 72.0 in 2021		
72.0 in 2012	72.0 in 2012		
72.0 in 1973	72.0 in 1973		

Normal Temperature for Spring at WAUF1 = 71.2°

Normal Rainfall for Spring at WAUF1 = 9.42 in.

Arcadia (Records began November 1899) :

Warmest Mays	Coollest Mays	Wettest Mays	Driest Mays
1 80.6 in 1912	1 73.5 in 1988	1 15.72 in 1987	1 0.01 in 1965
2 80.2 in 1991	2 73.9 in 1970	2 12.63 in 2018	2 0.30 in 1941
80.2 in 1938	73.9 in 1940	3 11.71 in 1923	3 0.40 in 2000
4 79.6 in 1905	4 74.0 in 1931	4 9.57 in 1958	0.40 in 1989
5 79.2 in 1935	74.0 in 1928	5 9.47 in 1925	5 0.57 in 1902
79.2 in 1933	6 74.2 in 1960	6 9.08 in 1954	6 0.78 in 1953
79.2 in 1902	7 74.3 in 1941	7 8.19 in 1963	7 0.82 in 1940
8 79.0 in 1995	8 74.5 in 1982	8 7.99 in 1959	8 0.92 in 1983
9 78.9 in 2019	74.5 in 1977	9 7.88 in 1910	9 0.94 in 1927
78.9 in 2012	10 74.7 in 1989	10 7.84 in 1912	10 0.99 in 1917
78.9 in 2003	74.7 in 1926		
78.9 in 1953	74.7 in 1921		

Average Temperature for May 2021 = Not Available Yet

Normal Temperature for May at ARCF1 = 76.4°

Total Rainfall for May 2021 = Not Available Yet

Normal Rainfall for May at ARCF1 = 3.78 in.

Warmest Springs	Coollest Springs	Wettest Springs	Driest Springs
1 76.8 in 1912	1 67.8 in 1931	1 25.68 in 1987	1 2.32 in 1902
2 75.5 in 1908	2 69.1 in 2010	2 19.95 in 1982	2 2.66 in 2006
3 75.1 in 1945	3 69.2 in 1988	3 19.46 in 1958	3 2.70 in 1965
4 75.0 in 2015	69.2 in 1926	4 19.41 in 1947	4 3.31 in 2001
75.0 in 1929	5 69.4 in 1996	5 17.07 in 1957	5 3.36 in 1989
6 74.9 in 1948	69.4 in 1986	6 16.99 in 1930	6 3.38 in 1945
7 74.5 in 2003	7 69.6 in 1901	7 16.96 in 2018	7 3.40 in 1949
74.5 in 1935	8 69.7 in 2013	8 16.25 in 1954	8 3.51 in 1917
9 74.3 in 1938	69.7 in 1987	9 16.17 in 1959	9 3.75 in 1938
10 74.1 in 1913	69.7 in 1971	10 15.44 in 1923	10 3.81 in 1977
	69.7 in 1960		

Average Temperature for Spring = Not Available Yet

Normal Temperature for Spring at ARCF1 = 71.4°

Total Rainfall for Spring 2021 = Not Available Yet

Normal Rainfall for Spring at ARCF1 = 8.94 in.

Archbold Bio Stn (Records began January 1969) :

Warmest Mays	Coollest Mays	Wettest Mays	Driest Mays
1 79.1 in 1991	1 71.2 in 1992	1 14.46 in 2018	1 0.83 in 2021
2 79.0 in 1995	2 73.3 in 2013	2 7.99 in 2020	2 1.01 in 1983
3 78.5 in 2017	3 73.6 in 1988	3 7.61 in 1996	3 1.07 in 2015
4 78.2 in 2010	4 73.7 in 1993	4 7.23 in 2016	4 1.07 in 1993
5 78.1 in 2019	5 73.8 in 1982	5 7.00 in 1978	5 1.09 in 2005
6 78.0 in 1990	6 73.9 in 1983	6 6.97 in 1975	6 1.17 in 2000
78.0 in 1975	7 74.1 in 2005	7 6.96 in 1982	7 1.24 in 2007
8 77.3 in 2003	8 74.2 in 2006	8 6.75 in 2014	8 1.46 in 2006
9 77.2 in 2012	9 74.4 in 1977	9 6.53 in 1977	9 1.56 in 1986
77.2 in 2002	10 74.5 in 2007	10 6.52 in 1999	10 1.72 in 1990
11 77.0 in 1996	74.5 in 2001		
12 76.9 in 2015	74.5 in 1999		
76.9 in 1978			
14 76.8 in 1973			
15 76.7 in 2021			
76.7 in 2009			
76.7 in 1974			

Normal Temperature for May at ACHF1 = 76.3°

Normal Rainfall for May at ACHF1 = 4.36 in.

Warmest Springs	Coollest Springs	Wettest Springs	Driest Springs
1 75.3 in 2015	1 67.8 in 1983	1 18.74 in 2018	1 2.36 in 2006
2 74.0 in 1991	2 68.2 in 1993	2 17.63 in 1982	2 3.56 in 1971
3 73.5 in 2020	3 68.4 in 2013	3 16.84 in 2010	3 4.08 in 2007
73.5 in 2003	4 68.5 in 1987	4 15.34 in 2003	4 4.22 in 1981
73.5 in 1995	5 68.6 in 1992	5 14.26 in 1984	5 4.85 in 1990
6 73.3 in 1975	6 68.7 in 2005	6 14.01 in 1970	6 4.93 in 2002
7 73.1 in 2017	68.7 in 1986	7 13.53 in 1996	7 4.96 in 2017
73.1 in 2002	8 69.1 in 2010	8 13.41 in 1969	8 5.09 in 2000
9 73.0 in 1997	69.1 in 1988	9 12.51 in 1991	9 6.60 in 2009
10 72.9 in 1974	10 69.3 in 2004	10 12.24 in 1973	10 6.85 in 1974
11 72.7 in 2016		11 12.12 in 1997	
12 72.6 in 2012		12 11.52 in 2020	
13 72.5 in 2019		13 11.43 in 2011	
14 72.4 in 2021		14 11.19 in 2021	
72.4 in 1994			
72.4 in 1990			
72.4 in 1982			

Normal Temperature for Spring at ACHF1 = 71.7°

Normal Rainfall for Spring at ACHF1 = 9.77 in.

Punta Gorda Area (Records began May 1914) :

Warmest Mays	Coollest Mays	Wettest Mays	Driest Mays
1 80.9 in 1953	1 74.0 in 1917	1 15.98 in 2018	1 0.01 in 1927
2 80.7 in 1946	2 74.1 in 1928	2 10.13 in 1946	2 0.07 in 1992
3 80.5 in 1995	3 74.9 in 1992	3 9.45 in 1991	3 0.40 in 1965
4 80.2 in 1991	4 75.0 in 1916	4 9.27 in 1959	4 0.41 in 2000
5 79.9 in 2012	5 75.1 in 1920	5 8.24 in 1968	5 0.42 in 2004
79.9 in 1933	6 75.2 in 2001	6 8.20 in 1963	6 0.45 in 1953
7 79.7 in 2010	75.2 in 1970	7 7.77 in 1972	7 0.54 in 2001
79.7 in 1962	75.2 in 1925	8 7.34 in 1979	0.54 in 1967
9 79.6 in 1956	9 75.6 in 1977	9 7.29 in 1923	9 0.66 in 1998
10 79.5 in 1935	75.6 in 1941	10 7.18 in 1932	0.66 in 1941
...
28 78.4 in 2021	69 78.4 in 2021	82 1.20 in 2021	23 1.20 in 2021
78.4 in 2014	78.4 in 2014		
78.4 in 1996	78.4 in 1996		
78.4 in 1929	78.4 in 1929		

Normal Temperature for May at PGD = 77.9°

Normal Rainfall for May at PGD = 3.26 in.

Warmest Springs	Coollest Springs	Wettest Springs	Driest Springs
1 77.5 in 1945	1 68.3 in 1915	1 19.21 in 1957	1 0.69 in 1967
2 76.5 in 1948	2 68.8 in 1916	2 18.61 in 1947	2 1.20 in 2006
3 76.1 in 1953	3 69.4 in 1931	3 17.66 in 2018	3 1.82 in 2000
4 76.0 in 1946	4 70.2 in 1971	4 17.41 in 1930	4 2.10 in 1971
5 75.7 in 1944	5 70.5 in 1941	5 15.87 in 1970	5 2.14 in 1981
6 75.6 in 2015	6 70.8 in 2005	6 15.85 in 2010	6 2.24 in 2007
75.6 in 1991	7 70.9 in 1993	7 15.70 in 1959	7 2.27 in 1945
8 75.1 in 1994	70.9 in 1969	8 14.94 in 2003	8 3.31 in 1935
9 75.0 in 2012	9 71.1 in 2010	9 14.42 in 1931	9 3.45 in 1975
75.0 in 1929	71.1 in 2004	10 14.14 in 1991	10 3.55 in 1974
	71.1 in 1983		11 3.64 in 2004
...	...		12 4.09 in 1985
30 74.0 in 2021	65 74.0 in 2021		13 4.30 in 1992
74.0 in 2011	74.0 in 2011		14 4.34 in 1929
74.0 in 1985	74.0 in 1985		15 4.41 in 2002
74.0 in 1939	74.0 in 1939		16 4.47 in 1999
			17 4.53 in 1953
			18 4.68 in 2021

Normal Temperature for Spring at PGD = 73.2°

Normal Rainfall for Spring at PGD = 7.77 in.

Fort Myers Area (Records began January 1902) :

Warmest Mays	Coollest Mays	Wettest Mays	Driest Mays
1 82.0 in 1995	1 74.3 in 1917	1 12.77 in 2018	1 0.04 in 2021
2 81.2 in 2010	2 74.5 in 1941	2 10.32 in 1968	2 0.20 in 2001
3 81.1 in 2012	3 74.8 in 1921	3 8.73 in 1980	3 0.34 in 1994
4 80.8 in 1991	4 74.9 in 1928	4 8.49 in 1925	0.34 in 1962
5 80.7 in 2021	5 75.0 in 1970	8.49 in 1911	5 0.41 in 1953
80.7 in 1975	6 75.1 in 1903	6 8.48 in 1991	6 0.47 in 2004
7 80.6 in 2017	7 75.3 in 1940	7 8.42 in 1922	7 0.50 in 1964
8 80.5 in 2019	75.3 in 1931	8 8.05 in 1989	8 0.54 in 2010
80.5 in 2008	75.3 in 1918	9 7.97 in 1957	9 0.62 in 1988
80.5 in 2003	10 75.5 in 1925	10 7.82 in 1929	0.62 in 1983

Normal Temperature for May at FMY = 79.3°

Normal Rainfall for May at FMY = 3.46 in.

Warmest Springs	Coollest Springs	Wettest Springs	Driest Springs
1 77.9 in 2015	1 69.4 in 1931	1 24.94 in 1970	1 1.89 in 1945
2 77.8 in 2020	2 70.0 in 1915	2 18.71 in 1958	2 2.18 in 1967
3 77.0 in 2012	3 70.2 in 1941	3 18.23 in 1947	3 2.36 in 2006
4 76.9 in 1997	4 70.5 in 1983	4 17.77 in 1930	4 2.44 in 1902
5 76.6 in 1991	5 70.8 in 1960	5 16.85 in 1933	5 2.54 in 1974
6 76.4 in 2002	6 71.1 in 1971	6 15.70 in 1941	6 2.69 in 2001
7 76.3 in 2003	71.1 in 1916	7 15.39 in 1957	7 3.37 in 1953
8 76.2 in 2011	71.1 in 1910	8 14.62 in 1991	8 3.42 in 1964
76.2 in 1995	9 71.2 in 1940	9 14.26 in 2018	9 3.45 in 1927
76.2 in 1994	71.2 in 1926	10 13.84 in 1980	10 3.93 in 2017
11 76.0 in 1948			11 3.94 in 1938
12 75.9 in 2021			12 4.14 in 1924
			13 4.17 in 2021
			4.17 in 2002

Normal Temperature for Spring at FMY = 74.8°

Normal Rainfall for Spring at FMY = 7.97 in.

For more Climate information visit our web site at the following link:
<http://www.weather.gov/tampabay> and then go to the Climate and Past Weather
drop down menu above the graphical forecast images.