



NOAA - National Weather Service

Tampa Bay Area

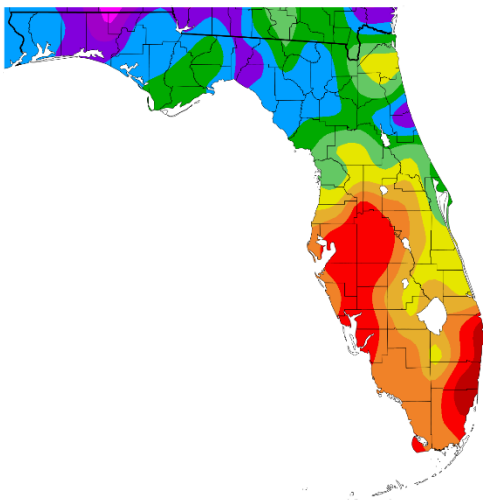
2525 14th Avenue SE, Ruskin, Florida 33570

813-645-2323 <https://weather.gov/tampabay>

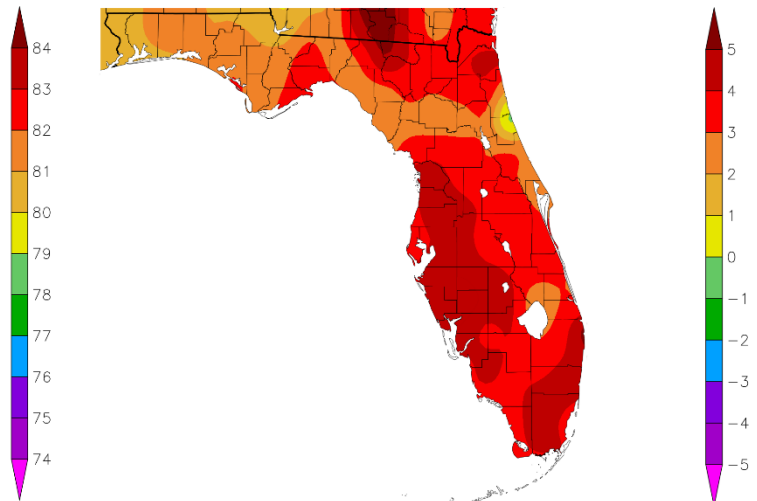
Preliminary May and Spring 2024 Climate Summary for West Central and Southwest Florida

This May we've seen temperatures above normal with averages running about 3 to 5 degrees above normal which will likely rank as the Top Warmest or Second Warmest May as most locations. As for Spring 2024 so far (March 1 - May 26), temperatures are averaging about 1 to 2 degrees above normal with some sites on track to end up in the Top Ten Warmest for Spring.

Temperature (F)
5/1/2024 - 5/26/2024

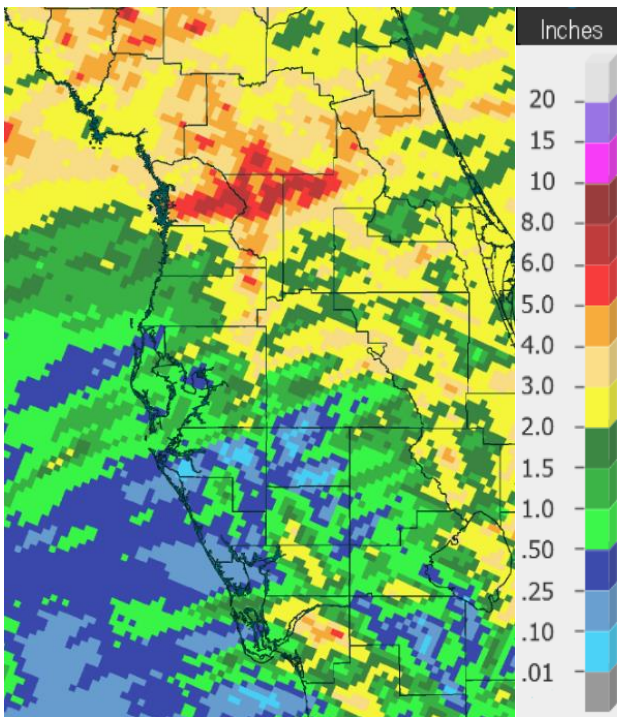


Departure from Normal Temperature (F)
5/1/2024 - 5/26/2024

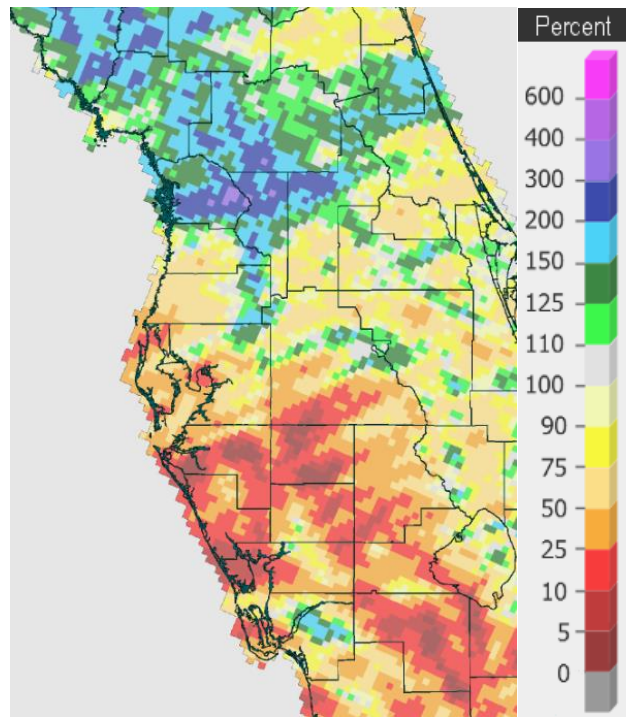


Graphics Source: NOAA Regional Climate Centers

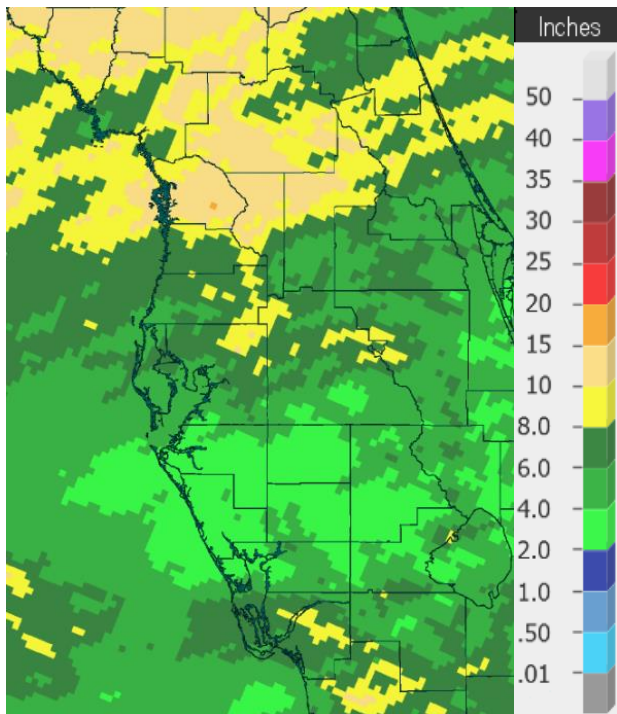
As for rainfall, March was rather dry with less than 50 percent of normal rainfall across much of the central Florida peninsula, but parts of the Nature Coast and southwest Florida were above normal. April was not any better with almost of the region below normal, with some areas south of Interstate 4 less than 25 percent of normal rainfall. As for May so far, the Nature Coast from around Citrus and Sumter Counties northward is running above normal, while elsewhere it has continued to be very dry with some areas south of Interstate 4 less than 25 percent of normal again.



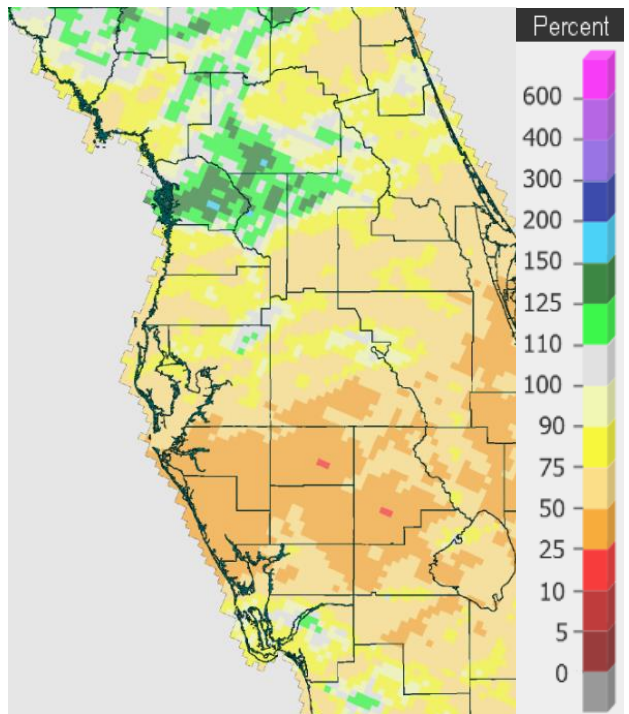
May 1-26, 2024 Rainfall



Percent of Normal



March 1 – May 26, 2024 Rainfall



Percent of Normal

On the following pages are tables of the Top Ten Warmest, Coolest, Wettest, and Driest Mays and Springs at some official NWS locations, which includes the average/total so far for this May and Spring 2024 (March/April/May) where available, and the 1991-2020 Normal (average) temperature and rainfall.

Chiefland 5 ESE (Records began July 1956):

Warmest Mays	Coollest Mays	Wettest Mays	Driest Mays
1 78.5 in 1991	1 72.3 in 1992	1 13.14 in 1976	1 0.00 in 2021
2 78.1 in 2019	2 72.5 in 2013	2 7.50 in 2010	0.00 in 2001
3 77.2 in 2017	72.5 in 2005	3 6.99 in 1959	3 0.05 in 2000
77.2 in 1959	72.5 in 1988	4 6.93 in 1966	4 0.23 in 2008
5 77.0 in 1995	5 72.6 in 1967	5 6.87 in 2014	5 0.26 in 1965
6 76.9 in 2015	72.6 in 1960	6 6.82 in 1969	6 0.62 in 1985
76.9 in 1975	7 72.8 in 2007	7 6.72 in 2018	7 0.68 in 1994
8 76.7 in 2012	72.8 in 2006	8 6.65 in 2005	8 0.76 in 2007
9 76.6 in 2018	9 72.9 in 1971	9 5.99 in 1991	9 0.82 in 1998
76.6 in 1990	10 73.0 in 2001	10 5.72 in 1980	0.82 in 1988

Average Temperature for May 1-26, 2024 = 77.0°
Normal Temperature for May at CHIF1 = 74.5°

Total Rainfall for May 1-26, 2024 = 2.15 inches
Normal Rainfall for May at CHIF1 = 2.78 in.

Warmest Springs	Coollest Springs	Wettest Springs	Driest Springs
1 73.4 in 2015	1 65.8 in 2005	1 24.94 in 1959	1 2.69 in 2007
2 72.1 in 2020	2 66.0 in 1969	2 23.30 in 1982	2 2.92 in 2000
3 72.0 in 1991	3 66.4 in 1960	3 21.65 in 1991	3 3.71 in 2006
4 71.7 in 2012	4 66.5 in 2013	4 19.46 in 2014	4 4.66 in 2002
5 71.3 in 2017	5 66.8 in 1993	5 19.45 in 1957	5 4.71 in 1989
6 70.8 in 2022	66.8 in 1971	6 19.41 in 2005	6 4.77 in 2004
70.8 in 2019	7 66.9 in 1966	7 18.33 in 1996	7 5.29 in 2017
70.8 in 2002	8 67.0 in 1996	8 16.64 in 2018	8 5.46 in 1994
9 70.5 in 2003	9 67.2 in 2001	9 16.28 in 1983	9 5.72 in 2019
10 70.4 in 1995	67.2 in 1962	10 16.23 in 1976	10 5.75 in 1998
			5.75 in 1967

Average Temperature for March 1 - May 26, 2024 = 69.6°
Normal Temperature for Spring at CHIF1 = 68.6°

Total Rainfall for March 1 - May 26, 2024 = 5.51 inches
Normal Rainfall for Spring at CHIF1 = 9.56 in

Inverness 3 SE (Records began July 1948):

Warmest Mays	Coollest Mays	Wettest Mays	Driest Mays
1 80.0 in 1953	1 71.6 in 1992	1 11.97 in 1976	1 0.04 in 2008
2 79.7 in 2010	2 72.3 in 1988	2 11.48 in 2009	2 0.20 in 2000
3 79.1 in 1975	3 72.6 in 1993	3 10.61 in 2018	3 0.29 in 2021
4 78.7 in 1962	4 73.4 in 2005	4 10.59 in 1959	4 0.40 in 1965
5 78.4 in 2019	5 73.6 in 2006	5 8.79 in 1979	5 0.42 in 1994
6 78.2 in 1991	6 73.7 in 1997	6 8.11 in 2012	6 0.49 in 1998
7 78.1 in 2022	7 73.9 in 2001	7 7.71 in 2014	7 0.54 in 2007
78.1 in 2015	8 74.0 in 2007	8 7.33 in 1984	8 0.74 in 1997
78.1 in 1959	74.0 in 1999	9 7.27 in 1952	0.74 in 1977
10 78.0 in 1955	10 74.2 in 1982	10 6.92 in 1982	10 0.78 in 2001
	74.2 in 1976		

Average Temperature for May 2024 = Not Available Yet
 Normal Temperature for May at INVFl = 74.8°

Total Rainfall for May 2024 = Not Available Yet
 Normal Rainfall for May at INVFl = 3.09 in.

Warmest Springs	Coollest Springs	Wettest Springs	Driest Springs
1 74.0 in 2015	1 66.3 in 1993	1 24.95 in 1959	1 1.96 in 1967
2 73.7 in 1953	2 66.9 in 1992	2 21.14 in 1960	2 2.76 in 1977
3 73.5 in 1967	3 67.1 in 1996	3 20.75 in 1982	3 3.22 in 2000
4 73.1 in 1963	4 67.2 in 1988	4 18.07 in 2022	4 3.60 in 1994
5 73.0 in 2023	5 67.8 in 2018	5 17.63 in 2018	5 4.03 in 2013
73.0 in 2020	6 68.1 in 2001	6 17.36 in 2014	6 4.05 in 2007
7 72.9 in 2012	7 68.3 in 2007	7 17.22 in 1991	7 4.24 in 2019
8 72.5 in 2022	8 68.7 in 2004	8 15.78 in 1987	8 4.47 in 2004
72.5 in 1965	68.7 in 1999	15.74 in 1976	9 4.63 in 1955
10 72.2 in 1974	10 69.1 in 2006	10 15.34 in 1958	10 4.67 in 1999

Average Temperature for Spring 2024 = Not Available Yet
 Normal Temperature for Spring at INVFl = 68.8°

Total Rainfall for Spring 2024 = Not Available Yet
 Normal Rainfall for Spring at INVFl = 9.07 in.

Brooksville Area (Records began January 1892):

Warmest Mays	Coollest Mays	Wettest Mays	Driest Mays
1 80.7 in 1905	1 72.5 in 2005	1 16.27 in 1976	1 Trace in 1977
2 80.6 in 1927	2 72.8 in 1917	2 15.57 in 2009	2 0.19 in 1926
3 80.3 in 1933	3 73.1 in 2001	3 12.25 in 2018	3 0.23 in 1949
4 79.6 in 1995	4 73.2 in 1924	4 12.20 in 1923	4 0.29 in 2000
5 79.4 in 1899	73.2 in 1920	5 9.54 in 2014	5 0.45 in 1951
6 79.2 in 1929	6 73.4 in 1923	6 9.25 in 1906	6 0.47 in 1948
7 79.1 in 1962	7 73.6 in 1999	7 9.15 in 1912	7 0.56 in 2021
8 79.0 in 1975	8 73.7 in 1925	8 8.71 in 1921	8 0.57 in 1908
79.0 in 1902	9 73.8 in 2006	9 8.18 in 1957	9 0.60 in 1899
10 78.7 in 2019	73.8 in 1954	10 7.92 in 1919	10 0.68 in 1910
78.7 in 1953			
78.7 in 1935			

Average Temperature for May 1-26, 2024 = 79.6°

Normal Temperature for May at BKV = 75.3°

Total Rainfall for May 1-26, 2024 = 0.65 inches

Normal Rainfall for May at BKV = 3.35 in.

Warmest Springs	Coollest Springs	Wettest Springs	Driest Springs
1 75.2 in 1929	1 66.1 in 2005	1 22.97 in 1959	1 1.20 in 1898
2 75.0 in 1945	2 67.6 in 2004	2 21.84 in 1960	2 1.57 in 2000
3 74.4 in 1927	67.6 in 1926	3 21.28 in 1991	3 2.20 in 1977
4 74.3 in 2015	67.6 in 1892	4 20.07 in 1928	2.20 in 1945
74.3 in 1935	5 67.8 in 1924	5 19.69 in 1976	5 2.35 in 2006
6 74.2 in 2020	6 68.0 in 2010	6 19.67 in 1900	6 2.58 in 1910
7 74.0 in 1948	7 68.1 in 1998	7 18.83 in 2018	7 3.25 in 1908
8 73.6 in 1938	8 68.2 in 2013	8 18.78 in 1982	8 3.56 in 1967
9 73.3 in 1994	9 68.3 in 2001	9 18.54 in 1987	9 3.65 in 2017
10 73.2 in 1905	68.3 in 1999	10 18.26 in 1957	10 3.67 in 1897

Average Temperature for March 1 - May 26, 2024 = 71.9°

Normal Temperature for Spring at BKV = 69.6°

Total Rainfall for March 1 - May 26, 2024 = 6.26 inches

Normal Rainfall for Spring at BKV = 8.19 in.

St. Leo (Records began April 1895):

Warmest Mays	Coollest Mays	Wettest Mays	Driest Mays
1 81.3 in 1995	1 71.7 in 1928	1 16.81 in 1979	1 0.03 in 2000
2 80.6 in 1899	2 72.3 in 1921	2 14.37 in 1923	2 0.08 in 2021
3 80.2 in 1953	3 73.0 in 1923	3 11.64 in 2009	3 0.15 in 2008
4 80.1 in 2003	4 73.1 in 1931	4 10.33 in 1976	4 0.17 in 1953
5 79.7 in 2000	5 73.6 in 1917	5 10.06 in 2018	5 0.28 in 1965
6 79.6 in 1896	6 73.7 in 1940	6 9.43 in 1919	6 0.40 in 1985
7 79.4 in 1962	7 73.8 in 1920	7 9.23 in 1963	7 0.51 in 1914
8 79.3 in 1985	8 73.9 in 1992	8 8.64 in 1905	8 0.78 in 2001
79.3 in 1902	9 74.1 in 1918	9 8.63 in 1957	9 0.84 in 1998
10 79.2 in 2019	10 74.2 in 1903	10 8.28 in 1921	10 0.86 in 1927
79.2 in 1975			

Average Temperature for May 2024 = Not Available Yet
 Normal Temperature for May at STLFL1 = 76.7°

Total Rainfall for May 2024 = Not Available Yet
 Normal Rainfall for May at STLFL1 = 2.98 in.

Warmest Springs	Coollest Springs	Wettest Springs	Driest Springs
1 75.2 in 1948	1 65.6 in 1931	1 24.63 in 1987	1 1.12 in 2000
2 74.9 in 2002	2 67.9 in 1915	2 21.67 in 1979	2 1.83 in 1967
3 74.8 in 1945	3 68.0 in 1928	3 21.01 in 1960	3 2.87 in 1898
4 74.7 in 2003	4 68.5 in 1930	4 20.57 in 1900	4 3.20 in 1904
5 74.6 in 2015	5 69.0 in 1940	5 20.48 in 1959	5 3.32 in 1977
6 74.5 in 1908	6 69.2 in 1916	6 20.01 in 1953	6 3.96 in 1999
7 74.4 in 1995	7 69.3 in 2013	7 19.13 in 1991	7 4.03 in 1908
8 74.2 in 2020	69.3 in 1971	8 18.77 in 1928	8 4.10 in 1914
74.2 in 1953	69.3 in 1969	9 18.34 in 1957	9 4.19 in 1910
10 74.1 in 1994	10 69.4 in 1992	10 17.99 in 2018	10 4.46 in 2006
	69.4 in 1926		
	69.4 in 1920		

Average Temperature for Spring 2024 = Not Available Yet
 Normal Temperature for Spring at STLFL1 = 71.5°

Total Rainfall for Spring 2024 = Not Available Yet
 Normal Rainfall for Spring at STLFL1 = 9.22 in.

Tarpon Springs (Records began January 1892):

Warmest Mays	Coollest Mays	Wettest Mays	Driest Mays
1 82.1 in 1995	1 71.7 in 1939	1 15.17 in 1979	1 0.00 in 2001
2 80.6 in 2019	2 72.6 in 1897	2 10.14 in 1991	0.00 in 2000
80.6 in 1991	3 72.8 in 1917	3 10.13 in 1976	3 Trace in 1927
4 80.3 in 1933	4 73.6 in 1894	4 9.38 in 1946	4 0.01 in 2007
5 80.0 in 1996	5 74.0 in 1928	5 8.18 in 1921	5 0.03 in 1965
6 79.8 in 2010	6 74.1 in 1992	6 7.70 in 1969	6 0.08 in 2021
7 79.6 in 2003	74.1 in 1941	7 7.17 in 1957	7 0.11 in 1949
8 79.3 in 1953	74.1 in 1921	8 6.84 in 1915	8 0.13 in 1899
79.3 in 1943	74.1 in 1903	9 6.79 in 2018	9 0.14 in 1994
10 79.2 in 1994	74.1 in 1892	10 6.53 in 2012	10 0.15 in 1953
79.2 in 1990			

Average Temperature for May 1-26, 2024 = 80.7°

Normal Temperature for May at TRPF1 = 77.6°

Total Rainfall for May 1-26, 2024 = 0.53 inches

Normal Rainfall for May at TRPF1 = 2.35 in.

Warmest Springs	Coollest Springs	Wettest Springs	Driest Springs
1 75.5 in 1948	1 66.9 in 1940	1 22.38 in 1959	1 0.97 in 1898
2 75.4 in 2020	2 67.5 in 1915	2 20.20 in 1979	2 1.40 in 2000
75.4 in 2015	3 68.0 in 1960	3 19.83 in 1991	3 1.43 in 2006
4 75.0 in 1995	68.0 in 1931	4 18.91 in 1987	4 1.47 in 1967
75.0 in 1991	5 68.3 in 1971	5 18.30 in 1957	5 1.65 in 2023
6 74.9 in 1929	6 68.7 in 1916	6 18.26 in 1942	6 1.86 in 1908
7 74.8 in 1997	7 68.8 in 1969	7 17.99 in 1960	7 2.81 in 1990
8 74.4 in 1994	68.8 in 1941	8 16.73 in 1900	8 2.82 in 1977
74.4 in 1945	9 68.9 in 1900	9 15.71 in 1983	9 2.83 in 1945
10 74.1 in 2019	10 69.0 in 1906	10 15.58 in 1931	10 3.21 in 1927

Average Temperature for March 1 - May 26, 2024 = 73.9°

Normal Temperature for Spring at TRPF1 = 72.2°

Total Rainfall for March 1 - May 26, 2024 = 4.97 inches

Normal Rainfall for Spring at TRPF1 = 8.12 in.

Tampa Area (Records began April 1890):

Warmest Mays	Coollest Mays	Wettest Mays	Driest Mays
1 81.7 in 1995	1 73.8 in 1891	1 17.64 in 1979	1 Trace in 2001
2 81.6 in 2022	2 74.2 in 1992	2 9.41 in 1921	2 0.02 in 2000
81.6 in 2019	3 74.3 in 1928	3 9.11 in 2009	3 0.07 in 1994
4 81.5 in 1975	4 74.4 in 1982	4 8.54 in 2014	4 0.10 in 1992
5 81.2 in 1991	5 74.5 in 1897	5 8.13 in 1976	5 0.16 in 2021
6 81.1 in 2021	6 74.7 in 1940	6 7.73 in 2018	0.16 in 1941
7 81.0 in 2017	74.7 in 1917	7 7.55 in 1959	7 0.17 in 1973
8 80.9 in 2010	8 74.8 in 1921	8 7.21 in 1957	8 0.22 in 1985
9 80.7 in 2012	74.8 in 1903	9 6.92 in 1894	9 0.24 in 1989
10 80.5 in 2015	10 74.9 in 1923	10 6.88 in 1991	10 0.31 in 1940
80.5 in 1990			

Average Temperature for May 1-26, 2024 = 82.3°

Normal Temperature for May at TPA = 79.5°

Total Rainfall for May 1-26, 2024 = 1.07 inches

Normal Rainfall for May at TPA = 2.60 in.

Warmest Springs	Coollest Springs	Wettest Springs	Driest Springs
1 77.5 in 2022	1 68.3 in 1915	1 25.67 in 1959	1 0.61 in 1898
2 77.1 in 2015	2 68.5 in 1931	2 20.78 in 1957	2 0.86 in 2000
3 76.6 in 2012	68.5 in 1901	3 20.62 in 1979	3 1.29 in 1967
4 76.3 in 2023	4 68.8 in 1969	4 19.91 in 1930	4 2.17 in 1945
5 76.2 in 2020	5 69.1 in 1971	5 17.54 in 1931	5 2.32 in 1977
6 76.0 in 2017	6 69.2 in 1993	6 15.26 in 1987	6 2.46 in 2006
7 75.4 in 1991	7 69.4 in 1992	7 14.45 in 1983	7 2.64 in 1999
75.4 in 1945	69.4 in 1926	8 14.38 in 2014	8 2.74 in 1989
9 75.3 in 2021	9 69.6 in 1983	9 14.31 in 1924	9 2.98 in 1985
10 75.3 in 2002	69.6 in 1940	10 13.73 in 1960	10 3.06 in 2017
	69.6 in 1916		
	69.6 in 1891		

Average Temperature for March 1 - May 26, 2024 = 75.6°

Normal Temperature for Spring at TPA = 74.0°

Total Rainfall for March 1 - May 26, 2024 = 4.98 inches

Normal Rainfall for Spring at TPA = 7.67 in.

St Petersburg Area (Records began July 1914):

Warmest Mays	Coollest Mays	Wettest Mays	Driest Mays
1 82.0 in 2010	1 75.3 in 1928	1 10.64 in 1959	1 0.00 in 1953
2 81.5 in 2015	75.3 in 1921	2 9.68 in 2018	2 Trace in 2007
3 81.3 in 1995	3 75.4 in 1992	3 9.21 in 1979	3 0.02 in 2000
4 81.2 in 1933	75.4 in 1917	4 8.17 in 1976	4 0.04 in 2001
5 80.9 in 2003	5 75.7 in 1940	5 7.85 in 1925	5 0.05 in 1941
80.9 in 1991	6 75.8 in 1954	6 7.16 in 1991	6 0.12 in 2021
7 80.8 in 1975	7 76.2 in 1920	7 7.11 in 1915	7 0.18 in 1945
80.8 in 1935	8 76.4 in 1993	8 7.05 in 1921	8 0.19 in 1973
9 80.4 in 2012	9 76.5 in 1988	9 6.99 in 2009	9 0.22 in 1992
10 80.3 in 2021	10 76.6 in 1960	10 6.08 in 1957	10 0.24 in 1994
80.3 in 2000	76.6 in 1951		

Average Temperature for May 1-26, 2024 = 83.3°
Normal Temperature for May at SPG = 79.4°

Total Rainfall for May 1-26, 2024 = 0.34 inches
Normal Rainfall for May at SPG = 2.26 in.

Warmest Springs	Coollest Springs	Wettest Springs	Driest Springs
1 77.7 in 2015	1 69.5 in 1915	1 26.45 in 1959	1 0.88 in 1945
2 76.7 in 2020	2 70.1 in 1931	2 17.88 in 1957	2 1.42 in 2000
76.7 in 2012	3 70.2 in 1993	3 17.20 in 1930	3 1.53 in 2006
4 76.5 in 2023	70.2 in 1983	4 17.18 in 1931	4 1.73 in 1977
5 75.9 in 1948	5 70.7 in 1996	5 16.31 in 1987	5 2.48 in 1967
75.9 in 1935	70.7 in 1940	6 15.65 in 1982	6 2.73 in 2007
75.9 in 1929	70.7 in 1926	7 15.17 in 1960	7 2.84 in 1938
8 75.8 in 2022	8 70.8 in 1916	8 14.50 in 2003	8 2.85 in 1949
75.8 in 2002	9 71.0 in 1992	9 14.03 in 1991	9 2.88 in 1999
10 75.6 in 2011	10 71.1 in 1924	10 13.98 in 1958	10 2.96 in 2002

Average Temperature for March 1 - May 26, 2024 = 76.4°
Normal Temperature for Spring at SPG = 74.2°

Total Rainfall for March 1 - May 26, 2024 = 3.57 inches
Normal Rainfall for Spring at SPG = 6.77 in.

Plant City (Temperature Records began September 1892/Rainfall Records began February 1893):

Warmest Mays	Coollest Mays	Wettest Mays	Driest Mays
1 82.0 in 2019	1 71.3 in 1928	1 16.44 in 2009	1 0.01 in 2001
2 80.8 in 2017	2 71.9 in 1931	2 14.27 in 2018	2 0.14 in 2000
3 80.4 in 2022	3 72.0 in 1940	3 11.77 in 1991	3 0.29 in 1953
4 80.1 in 1915	4 72.4 in 1941	4 11.68 in 1979	4 0.50 in 1992
5 80.0 in 1995	5 73.0 in 1925	5 10.64 in 1923	5 0.58 in 1981
6 79.9 in 2021	6 73.6 in 1992	6 10.14 in 1957	6 0.62 in 2007
7 79.8 in 1975	7 73.9 in 1932	7 9.10 in 1905	7 0.67 in 1985
8 79.6 in 2010	8 74.0 in 1979	8 9.04 in 1976	0.67 in 1948
9 79.5 in 1991	74.0 in 1960	9 8.72 in 1907	9 0.72 in 1898
79.5 in 1953	10 74.1 in 1901	10 8.41 in 2022	10 0.75 in 1945

Average Temperature for May 1-26, 2024 = 83.3°
 Normal Temperature for May at PLCF1 = 78.7°

Total Rainfall for May 1-26, 2024 = 2.32 inches
 Normal Rainfall for May at PLCF1 = 4.04 in.

Warmest Springs	Coollest Springs	Wettest Springs	Driest Springs
1 76.8 in 2023	1 64.9 in 1931	1 26.28 in 1959	1 1.56 in 1898
2 76.7 in 2020	2 66.8 in 1901	2 23.68 in 1957	2 1.91 in 1977
3 76.2 in 2015	3 67.0 in 1932	3 20.67 in 1991	3 2.30 in 1981
4 75.8 in 2022	4 67.9 in 1940	4 19.68 in 1960	4 2.40 in 1908
5 75.9 in 2019	5 68.0 in 1941	5 19.42 in 1987	5 2.61 in 1945
6 75.3 in 2021	6 68.1 in 1930	6 19.38 in 1900	6 2.62 in 2017
7 75.1 in 1912	7 68.9 in 1925	7 19.25 in 1933	7 3.13 in 1902
8 75.0 in 2017	8 69.0 in 1942	8 18.59 in 2009	8 3.29 in 1949
9 74.8 in 2016	69.0 in 1928	9 18.56 in 1930	9 3.47 in 1985
10 74.7 in 2012	10 69.1 in 1924	10 18.30 in 1931	10 3.61 in 1967

Average Temperature for March 1 - May 26, 2024 = 75.7°
 Normal Temperature for Spring at PLCF1 = 73.6°

Total Rainfall for March 1 - May 26, 2024 = 6.19 inches
 Normal Rainfall for Spring at PLCF1 = 9.70 in.

Lakeland (Records began January 1915):

Warmest Mays	Coollest Mays	Wettest Mays	Driest Mays
1 82.9 in 1995	1 73.4 in 1928	1 19.19 in 2018	1 0.13 in 1953
2 81.0 in 1996	2 74.0 in 2007	2 16.03 in 1979	2 0.34 in 2021
3 80.8 in 2019	3 74.4 in 1941	3 14.95 in 2009	3 0.37 in 2008
4 80.7 in 1991	74.4 in 1921	4 10.83 in 1923	4 0.44 in 2001
5 80.6 in 2010	5 74.8 in 1923	5 10.65 in 1991	5 0.50 in 1985
6 80.5 in 1990	6 75.1 in 1982	6 9.68 in 1957	6 0.55 in 2000
7 80.4 in 1994	75.1 in 1970	7 9.10 in 1968	0.55 in 1965
8 80.1 in 1933	8 75.2 in 1940	8 8.75 in 2023	8 0.63 in 1986
9 80.0 in 2017	75.2 in 1917	9 8.45 in 1922	9 0.89 in 1960
10 79.9 in 2015	10 75.4 in 1972	10 8.21 in 1921	10 0.92 in 1945
79.9 in 1935	75.4 in 1960		
	75.4 in 1931		
	75.4 in 1920		

Average Temperature for May 1-26, 2024 = 82.4°

Normal Temperature for May at LLDF1 = 78.2°

Total Rainfall for May 1-26, 2024 = 2.81 inches

Normal Rainfall for May at LLDF1 = 3.80 in.

Warmest Springs	Coollest Springs	Wettest Springs	Driest Springs
1 76.3 in 2015	1 69.1 in 1941	1 24.87 in 1959	1 2.28 in 1945
2 76.1 in 2020	2 69.3 in 1915	2 23.85 in 2018	2 3.02 in 1981
3 76.0 in 2023	3 69.5 in 1960	3 21.98 in 1981	3 3.16 in 2000
76.0 in 1995	4 69.6 in 1969	4 21.14 in 1957	4 3.32 in 1967
5 75.8 in 1994	5 69.8 in 1983	5 21.03 in 1979	5 3.40 in 2017
6 75.7 in 1991	69.8 in 1925	6 20.64 in 1934	6 3.75 in 1977
75.7 in 1935	7 69.9 in 1971	7 18.56 in 1982	7 3.89 in 2006
8 75.4 in 2022	8 70.0 in 2007	8 18.46 in 1987	8 4.03 in 1985
9 75.0 in 2012	9 70.2 in 1926	9 17.86 in 1931	9 4.45 in 1949
75.0 in 1989	70.2 in 1924	17.86 in 1930	10 4.47 in 2021

Average Temperature for March 1 - May 26, 2024 = 75.2°

Normal Temperature for Spring at LLDF1 = 73.3°

Total Rainfall for March 1 - May 26, 2024 = 7.23 inches

Normal Rainfall for Spring at LLDF1 = 9.68 in.

Winter Haven Area (Records began March 1941) :

Warmest Mays	Coollest Mays	Wettest Mays	Driest Mays
1 81.8 in 2019	1 74.3 in 1972	1 12.72 in 1957	1 0.03 in 2000
2 81.6 in 1995	2 74.5 in 1960	2 10.36 in 1982	2 0.05 in 2021
3 80.9 in 2015	3 74.6 in 1982	3 8.54 in 1943	3 0.49 in 1945
80.9 in 2010	4 74.9 in 1954	4 8.26 in 2009	4 0.57 in 1941
80.9 in 2003	5 75.1 in 1941	5 8.11 in 1976	5 0.58 in 1965
6 80.4 in 2022	6 75.3 in 1983	6 7.63 in 1946	6 0.71 in 2004
7 80.2 in 1990	7 75.4 in 1971	7 7.58 in 2018	7 0.80 in 1951
80.2 in 1989	8 75.5 in 1988	8 6.81 in 1947	8 0.81 in 1985
80.2 in 1953	75.5 in 1968	9 6.75 in 1975	9 0.84 in 1949
10 80.0 in 2017	10 75.7 in 2007	10 6.54 in 2016	10 0.88 in 1969
80.0 in 2012	75.7 in 1977		
	75.7 in 1973		

Average Temperature for May 1-26, 2024 = 82.4°
 Normal Temperature for May at GIF = 79.3°

Total Rainfall for May 1-26, 2024 = 2.62 inches
 Normal Rainfall for May at GIF = 2.67 in.

Warmest Springs	Coollest Springs	Wettest Springs	Driest Springs
1 77.7 in 2015	1 69.1 in 1983	1 23.21 in 1957	1 1.61 in 2000
2 76.5 in 2020	2 69.5 in 1960	2 21.81 in 1959	2 2.25 in 1945
3 76.1 in 1948	3 69.8 in 1971	3 20.49 in 1982	3 2.61 in 2017
4 76.0 in 2022	69.8 in 1969	4 20.32 in 1960	4 2.94 in 1981
5 75.9 in 1991	5 70.1 in 1941	5 18.23 in 1947	5 3.77 in 2007
75.9 in 1945	6 70.4 in 1987	6 15.16 in 1991	6 3.78 in 1967
7 75.7 in 1989	70.4 in 1968	7 14.42 in 2010	7 4.01 in 2021
8 75.6 in 2023	8 70.6 in 1993	8 13.59 in 1970	8 4.08 in 2015
9 75.5 in 2012	70.6 in 1981	13.59 in 1973	9 4.17 in 2006
10 75.4 in 2019	10 70.8 in 2013	10 13.44 in 1958	10 4.39 in 1965
	70.8 in 2005		
	70.8 in 1988		

Average Temperature for March 1 - May 26, 2024 = 75.4°
 Normal Temperature for Spring at GIF = 74.1°

Total Rainfall for March 1 - May 26, 2024 = 6.62 inches
 Normal Rainfall for Spring at GIF = 8.21 in.

Bartow (Records began June 1892) :

Warmest Mays	Coollest Mays	Wettest Mays	Driest Mays
1 82.9 in 2015	1 73.3 in 1928	1 17.74 in 1923	1 0.02 in 1965
2 81.4 in 1995	2 73.5 in 1913	2 13.05 in 1979	2 0.25 in 1941
3 81.1 in 2014	3 73.8 in 1941	3 12.96 in 1957	3 0.36 in 1908
81.1 in 2003	4 74.3 in 1894	4 11.42 in 2009	4 0.40 in 1992
5 81.0 in 2012	5 74.5 in 1917	5 11.16 in 1905	5 0.45 in 1951
6 80.5 in 1905	6 74.6 in 1921	6 11.15 in 1930	6 0.52 in 2021
7 80.0 in 1990	7 74.7 in 1940	7 11.04 in 1976	7 0.72 in 1955
80.0 in 1975	74.7 in 1897	8 10.35 in 1921	8 0.75 in 1949
80.0 in 1953	9 74.8 in 1992	9 9.46 in 2018	9 0.87 in 1953
10 79.8 in 1991	10 74.9 in 1982	10 9.42 in 1932	10 0.91 in 2004
79.8 in 1933			
79.8 in 1899			

Average Temperature for May 2024 = Not Available Yet
Normal Temperature for May at BARF1 = 77.6°

Total Rainfall for May 2024 = Not Available Yet
Normal Rainfall for May at BARF1 = 2.95 in.

Warmest Springs	Coollest Springs	Wettest Springs	Driest Springs
1 80.1 in 2015	1 67.8 in 1915	1 25.91 in 1959	1 2.34 in 1908
2 76.0 in 2003	2 68.2 in 1901	2 22.99 in 1930	2 2.48 in 1967
3 75.9 in 2012	3 69.3 in 1914	3 22.88 in 1957	3 2.55 in 2000
4 75.6 in 2014	4 69.6 in 1983	4 19.55 in 1934	4 3.27 in 1977
5 75.4 in 1908	5 70.1 in 1993	5 19.44 in 1923	5 3.53 in 1949
6 75.3 in 1945	6 70.5 in 1894	6 19.34 in 1905	3.53 in 1894
7 75.1 in 1991	70.5 in 1893	7 19.05 in 1947	7 3.55 in 2017
8 74.9 in 2023	8 70.6 in 1971	8 18.67 in 1991	8 3.57 in 1892
9 74.8 in 1995	70.6 in 1960	9 17.84 in 1979	9 3.70 in 2021
74.8 in 1948	70.6 in 1925	10 16.39 in 1937	10 3.77 in 1911
	70.6 in 1913		
	70.6 in 1896		

Average Temperature for Spring 2024 = Not Available Yet
Normal Temperature for Spring at BARF1 = 72.6°

Total Rainfall for Spring 2024 = Not Available Yet
Normal Rainfall for Spring at BARF1 = 8.51 in.

Sarasota-Bradenton Area (Records began January 1911):

Warmest Mays	Coollest Mays	Wettest Mays	Driest Mays
1 80.7 in 2019	1 71.8 in 1917	1 9.52 in 1996	1 0.00 in 1941
80.7 in 1995	2 72.9 in 1928	2 9.39 in 1991	2 Trace in 2007
3 79.6 in 2010	3 73.1 in 1940	3 9.34 in 1978	3 0.02 in 1953
4 79.5 in 1991	4 73.4 in 1911	4 9.26 in 1957	4 0.10 in 1951
79.5 in 1990	5 73.5 in 1931	5 9.05 in 1921	0.10 in 1945
6 79.4 in 2012	73.5 in 1921	6 8.56 in 1954	6 0.13 in 1973
7 78.9 in 2017	7 73.7 in 1960	7 8.18 in 1959	7 0.15 in 1992
8 78.8 in 2022	8 74.0 in 1924	8 7.52 in 1934	0.15 in 1952
9 78.7 in 2003	9 74.1 in 1926	9 7.05 in 2014	9 0.16 in 1967
10 78.6 in 2021	10 74.2 in 1992	10 6.97 in 2018	10 0.18 in 1994
	74.2 in 1923		

Average Temperature for May 1-26, 2024 = 80.7°

Normal Temperature for May at SRQ = 77.8°

Total Rainfall for May 1-26, 2024 = 0.02 inches

Normal Rainfall for May at SRQ = 2.58 in.

Warmest Springs	Coollest Springs	Wettest Springs	Driest Springs
1 75.4 in 2023	1 66.8 in 1931	1 25.80 in 1957	1 1.39 in 1967
75.4 in 2020	2 67.2 in 1915	2 17.97 in 1959	2 2.01 in 2006
3 75.2 in 2015	3 68.3 in 1916	3 17.92 in 1991	3 2.07 in 1977
4 75.1 in 2012	4 68.5 in 1940	4 16.60 in 1996	4 2.50 in 1945
5 75.0 in 2022	5 68.8 in 1941	5 16.55 in 1997	5 2.61 in 1981
6 74.5 in 2019	68.8 in 1926	6 15.97 in 1958	6 2.83 in 1974
7 74.4 in 2016	68.8 in 1924	7 15.17 in 1930	7 2.97 in 1956
8 74.3 in 1995	8 69.0 in 1983	8 14.97 in 1969	8 3.02 in 2007
9 74.0 in 1994	9 69.1 in 1971	9 14.76 in 2014	3.02 in 1949
10 73.9 in 2003	10 69.5 in 1914	10 14.20 in 1987	10 3.10 in 2000
73.9 in 2002			

Average Temperature for March 1 - May 26, 2024 = 74.5°

Normal Temperature for Spring at SRQ = 72.9°

Total Rainfall for March 1 - May 26, 2024 = 2.12 inches

Normal Rainfall for Spring at SRQ = 7.89 in.

**Myakka River State Park (Temperature Records began March 1956/
Rainfall Records began September 1943):**

Warmest Mays	Coollest Mays	Wettest Mays	Driest Mays
1 81.3 in 1995	1 73.5 in 1960	1 15.06 in 2018	1 0.02 in 2007
2 80.1 in 2010	2 74.2 in 1992	2 12.81 in 1959	0.02 in 2000
3 79.9 in 2019	3 74.9 in 1988	3 9.17 in 2014	3 0.23 in 1985
4 79.8 in 2003	4 75.0 in 2001	4 8.85 in 1970	4 0.35 in 1953
5 79.4 in 1990	75.0 in 1993	5 7.95 in 1975	5 0.42 in 1945
6 79.3 in 1998	6 75.1 in 2013	6 7.92 in 2009	6 0.50 in 1955
7 79.2 in 1978	75.1 in 1963	7 7.73 in 2016	7 0.55 in 1994
8 79.0 in 1996	8 75.2 in 1972	8 7.55 in 1976	8 0.56 in 1973
9 78.9 in 2012	9 75.4 in 1970	9 6.02 in 1968	9 0.61 in 1951
78.9 in 1975	10 75.6 in 2020	10 5.59 in 1963	10 0.62 in 1949

Average Temperature for May 2024 = Not Available Yet
Normal Temperature for May at MKCF1 = 77.4°

Total Rainfall for May 2024 = Not Available Yet
Normal Rainfall for May at MKCF1 = 3.75 in.

Warmest Springs	Coollest Springs	Wettest Springs	Driest Springs
1 75.5 in 2003	1 69.1 in 1960	1 23.31 in 1959	1 1.43 in 2006
2 75.4 in 1995	2 69.8 in 1971	2 18.47 in 1987	2 1.83 in 1945
3 74.9 in 1997	69.8 in 1962	3 18.06 in 1957	3 3.01 in 1989
4 74.1 in 2012	4 70.0 in 2013	4 18.02 in 2018	4 3.44 in 1981
74.1 in 1982	5 70.4 in 1986	5 17.63 in 1993	5 3.56 in 1955
74.1 in 1975	6 70.5 in 1983	6 16.55 in 1998	6 3.80 in 2004
7 74.0 in 2019	70.5 in 1958	7 16.43 in 2014	7 4.05 in 1978
74.0 in 1990	8 70.7 in 2005	8 15.59 in 1969	8 4.12 in 1950
9 73.8 in 1994	70.7 in 1988	9 15.18 in 1970	9 4.16 in 1971
10 73.6 in 2016	10 70.8 in 1959	10 14.48 in 1982	10 4.37 in 1953

Average Temperature for Spring 2024 = Not Available Yet
Normal Temperature for Spring at MKCF1 = 72.6°

Total Rainfall for Spring 2024 = Not Available Yet
Normal Rainfall for Spring at MKCF1 = 9.73 in.

Venice (Records began May 1955) :

Warmest Mays	Coollest Mays	Wettest Mays	Driest Mays
1 82.7 in 2010	1 72.9 in 1988	1 13.39 in 2018	1 0.06 in 1994
2 81.8 in 1995	2 74.3 in 1960	2 8.57 in 1969	0.06 in 1989
3 81.3 in 2003	3 74.5 in 1981	3 7.73 in 2009	3 0.12 in 1995
4 80.8 in 2012	4 74.6 in 1980	4 7.70 in 1959	4 0.40 in 1972
5 80.2 in 2019	5 74.7 in 1977	5 6.41 in 1996	0.40 in 1967
6 79.8 in 2011	6 75.2 in 1973	6 5.86 in 1976	6 0.41 in 2007
7 78.9 in 1996	7 75.3 in 1963	7 5.61 in 1975	0.41 in 2001
8 78.8 in 1998	8 75.4 in 1983	8 5.13 in 1991	8 0.46 in 2008
9 78.7 in 2023	9 75.5 in 1970	9 5.12 in 2003	9 0.54 in 1999
78.7 in 2002	10 75.6 in 2005	10 4.98 in 1962	10 0.56 in 1973

Average Temperature for May 1-25, 2024 = 81.9°

Normal Temperature for May at VNCF1 = 77.5°

Total Rainfall for May 1-25, 2024 = 0.10 inches

Normal Rainfall for May at VNCF1 = 3.25 in.

Warmest Springs	Coollest Springs	Wettest Springs	Driest Springs
1 76.4 in 2012	1 68.8 in 1988	1 21.37 in 1957	1 0.79 in 1967
2 75.9 in 2023	2 69.3 in 1962	2 16.90 in 1959	2 1.87 in 1981
75.9 in 2003	3 69.5 in 1993	3 16.33 in 1969	3 1.94 in 1974
4 75.8 in 2015	4 69.7 in 1960	4 16.16 in 2018	4 2.58 in 1963
5 75.4 in 2011	5 69.8 in 1987	5 16.05 in 1984	5 2.83 in 1971
6 75.1 in 1995	69.8 in 1983	6 15.10 in 1983	6 2.92 in 1977
7 74.9 in 1997	7 69.9 in 1986	7 14.79 in 1987	7 3.30 in 2006
8 74.7 in 2002	8 70.0 in 2005	8 13.99 in 1962	3.30 in 1989
9 74.6 in 2022	9 70.1 in 1981	9 13.92 in 1996	9 3.36 in 1979
10 74.5 in 2020	10 70.4 in 1971	10 13.86 in 1991	10 3.59 in 2023
74.5 in 1994	70.4 in 1958		

Average Temperature for March 1 - May 25, 2024 = 75.1°

Normal Temperature for Spring at VNCF1 = 72.6°

Total Rainfall for March 1 - May 25, 2024 = 3.91 inches

Normal Rainfall for Spring at VNCF1 = 8.69 in.

Wauchula 2 N (Records began January 1933):

Warmest Mays	Coollest Mays	Wettest Mays	Driest Mays
1 80.1 in 2009	1 73.0 in 1992	1 13.94 in 2018	1 0.00 in 2000
2 79.8 in 1975	2 73.1 in 2013	2 11.32 in 1954	2 0.01 in 1965
3 79.7 in 1995	3 74.1 in 2001	3 11.31 in 1957	3 0.29 in 1945
4 79.4 in 1990	4 74.3 in 1960	4 10.61 in 1963	4 0.30 in 2015
79.4 in 1933	74.3 in 1940	5 9.37 in 2009	5 0.43 in 1953
6 79.2 in 1935	6 74.4 in 2007	6 8.39 in 1976	6 0.48 in 2008
7 78.9 in 2008	74.4 in 1999	7 7.82 in 1968	7 0.55 in 1941
78.9 in 1991	8 74.5 in 1982	8 7.53 in 1934	8 0.56 in 1949
9 78.5 in 1946	9 74.6 in 1954	9 7.42 in 1972	9 0.65 in 1995
10 78.4 in 2019	10 74.7 in 2011	10 7.17 in 1939	10 0.70 in 2004
78.4 in 1978	74.7 in 1941		
78.4 in 1967			

Average Temperature for May 1-19, 2024 = 80.5°

Normal Temperature for May at WAUF1 = 76.3°

Total Rainfall for May 1-19, 2024 = 0.20 inches

Normal Rainfall for May at WAUF1 = 3.51 in.

Warmest Springs	Coollest Springs	Wettest Springs	Driest Springs
1 75.0 in 1945	1 67.6 in 2013	1 21.37 in 1947	1 0.69 in 1945
2 74.8 in 1935	2 68.8 in 2005	2 20.73 in 1957	2 0.85 in 1967
3 74.6 in 1975	3 69.0 in 2004	3 18.24 in 1998	3 1.90 in 2006
74.6 in 1948	69.0 in 1993	4 17.01 in 2018	4 2.25 in 2000
5 74.4 in 1991	5 69.1 in 1996	5 16.98 in 1962	5 2.40 in 2004
6 74.1 in 2009	69.1 in 1983	6 16.65 in 1954	6 2.42 in 2015
74.1 in 1938	7 69.4 in 1960	7 15.78 in 1958	7 4.05 in 2023
8 74.0 in 2023	8 69.8 in 2018	8 15.60 in 1934	8 4.34 in 1981
74.0 in 2015	69.8 in 2007	9 15.14 in 1959	9 4.60 in 1974
74.0 in 1939	10 69.9 in 2014	10 14.19 in 1982	10 4.72 in 1949
	69.9 in 1950		

Average Temperature for March 1 - May 19, 2024 = 72.8°

Normal Temperature for Spring at WAUF1 = 71.2°

Total Rainfall for March 1 - May 19, 2024 = 2.74 inches

Normal Rainfall for Spring at WAUF1 = 9.42 in.

Archbold Bio Stn (Records began January 1969):

Warmest Mays	Coollest Mays	Wettest Mays	Driest Mays
1 79.1 in 1991	1 71.2 in 1992	1 14.46 in 2018	1 0.83 in 2021
2 79.0 in 1995	2 73.3 in 2013	2 7.99 in 2020	2 1.01 in 1983
3 78.5 in 2017	3 73.6 in 1988	3 7.61 in 1996	3 1.07 in 2015
4 78.2 in 2010	4 73.7 in 1993	4 7.23 in 2016	4 1.07 in 1993
5 78.1 in 2019	5 73.8 in 1982	5 7.00 in 1978	5 1.09 in 2005
6 78.0 in 1990	6 73.9 in 1983	6 6.97 in 1975	6 1.17 in 2000
78.0 in 1975	7 74.1 in 2005	7 6.96 in 1982	7 1.24 in 2007
8 77.4 in 2022	8 74.2 in 2006	8 6.75 in 2014	8 1.46 in 2006
9 77.3 in 2003	9 74.4 in 1977	9 6.53 in 1977	9 1.56 in 1986
10 77.2 in 2012	10 74.5 in 2007	10 6.52 in 1999	10 1.72 in 1990
77.2 in 2002	74.5 in 2001		
	74.5 in 1999		

Average Temperature for May 1-20, 2024 = 79.3°

Normal Temperature for May at ACHF1 = 76.3°

Total Rainfall for May 1-20, 2024 = 0.05 inches

Normal Rainfall for May at ACHF1 = 4.36 in.

Warmest Springs	Coollest Springs	Wettest Springs	Driest Springs
1 75.3 in 2015	1 67.8 in 1983	1 18.74 in 2018	1 2.36 in 2006
2 74.0 in 1991	2 68.2 in 1993	2 17.63 in 1982	2 3.56 in 1971
3 73.7 in 2023	3 68.4 in 2013	3 16.84 in 2010	3 4.08 in 2007
73.7 in 2022	4 68.5 in 1987	4 15.34 in 2003	4 4.22 in 1981
5 73.5 in 2020	5 68.6 in 1992	5 14.26 in 1984	5 4.85 in 1990
73.5 in 2003	6 68.7 in 2005	6 14.01 in 1970	6 4.93 in 2002
73.5 in 1995	68.7 in 1986	7 13.53 in 1996	7 4.96 in 2017
8 73.3 in 1975	8 69.1 in 2010	8 13.41 in 1969	8 5.09 in 2000
9 73.1 in 2017	69.1 in 1988	9 12.51 in 1991	9 6.60 in 2009
73.1 in 2002	10 69.3 in 2004	10 12.24 in 1973	10 6.73 in 2022

Average Temperature for March 1 - May 20, 2024 = 72.6°

Normal Temperature for Spring at ACHF1 = 71.7°

Total Rainfall for March 1 - May 20, 2024 = 1.84 inches

Normal Rainfall for Spring at ACHF1 = 9.77 in.

Punta Gorda Area (Records began May 1914) :

Warmest Mays	Coollest Mays	Wettest Mays	Driest Mays
1 80.9 in 1953	1 74.0 in 1917	1 15.98 in 2018	1 0.01 in 1927
2 80.7 in 1946	2 74.1 in 1928	2 10.13 in 1946	2 0.07 in 1992
3 80.5 in 1995	3 74.9 in 1992	3 9.45 in 1991	3 0.40 in 1965
4 80.2 in 1991	4 75.0 in 1916	4 9.27 in 1959	4 0.41 in 2000
5 79.9 in 2012	5 75.1 in 1920	5 8.24 in 1968	5 0.42 in 2004
79.9 in 1933	6 75.2 in 2001	6 8.20 in 1963	6 0.45 in 1953
7 79.7 in 2010	75.2 in 1970	7 7.77 in 1972	7 0.54 in 2001
79.7 in 1962	75.2 in 1925	8 7.34 in 1979	0.54 in 1967
9 79.6 in 1956	9 75.6 in 1977	9 7.29 in 1923	9 0.66 in 1998
10 79.5 in 1935	75.6 in 1941	10 7.18 in 1932	0.66 in 1941

Average Temperature for May 1-26, 2024 = 82.8°
 Normal Temperature for May at PGD = 77.9°

Total Rainfall for May 1-26, 2024 = 0.18 inches
 Normal Rainfall for May at PGD = 3.26 in.

Warmest Springs	Coollest Springs	Wettest Springs	Driest Springs
1 77.5 in 1945	1 68.3 in 1915	1 19.21 in 1957	1 0.69 in 1967
2 76.5 in 1948	2 68.8 in 1916	2 18.61 in 1947	2 1.20 in 2006
3 76.1 in 1953	3 69.4 in 1931	3 17.66 in 2018	3 1.82 in 2000
4 76.0 in 1946	4 70.2 in 1971	4 17.41 in 1930	4 2.10 in 1971
5 75.9 in 2023	5 70.5 in 1941	5 15.87 in 1970	5 2.14 in 1981
6 75.7 in 1944	6 70.8 in 2005	6 15.85 in 2010	6 2.24 in 2007
7 75.6 in 2015	7 70.9 in 1993	7 15.70 in 1959	7 2.27 in 1945
75.6 in 1991	70.9 in 1969	8 14.94 in 2003	8 3.31 in 1935
9 75.2 in 2022	9 71.1 in 2010	9 14.42 in 1931	9 3.45 in 1975
10 75.1 in 1994	71.1 in 2004	10 14.14 in 1991	10 3.55 in 1974
	71.1 in 1983		

Average Temperature for March 1 - May 26, 2024 = 76.4°
 Normal Temperature for Spring at PGD = 73.2°

Total Rainfall for March 1 - May 26, 2024 = 3.53 inches
 Normal Rainfall for Spring at PGD = 7.77 in.

Fort Myers Area (Records began January 1902) :

Warmest Mays	Coollest Mays	Wettest Mays	Driest Mays
1 82.0 in 1995	1 74.3 in 1917	1 12.77 in 2018	1 0.04 in 2021
2 81.3 in 2023	2 74.5 in 1941	2 10.32 in 1968	2 0.20 in 2001
3 81.2 in 2010	3 74.8 in 1921	3 8.73 in 1980	3 0.34 in 1994
4 81.1 in 2012	4 74.9 in 1928	4 8.67 in 2022	0.34 in 1962
5 80.8 in 1991	5 75.0 in 1970	5 8.49 in 1925	5 0.41 in 1953
6 80.7 in 2021	6 75.1 in 1903	8.49 in 1911	6 0.47 in 2004
80.7 in 1975	7 75.3 in 1940	7 8.48 in 1991	7 0.50 in 1964
8 80.6 in 2017	75.3 in 1931	8 8.42 in 1922	8 0.54 in 2010
9 80.5 in 2019	75.3 in 1918	9 8.05 in 1989	9 0.62 in 1988
80.5 in 2008	10 75.5 in 1925	10 7.97 in 1957	0.62 in 1983
80.5 in 2003			

Average Temperature for May 1-26, 2024 = 82.9°
Normal Temperature for May at FMY = 79.3°

Total Rainfall for May 1-26, 2024 = 3.17 inches
Normal Rainfall for May at FMY = 3.46 in.

Warmest Springs	Coollest Springs	Wettest Springs	Driest Springs
1 78.5 in 2023	1 69.4 in 1931	1 24.94 in 1970	1 1.89 in 1945
2 77.9 in 2022	2 70.0 in 1915	2 18.71 in 1958	2 2.18 in 1967
77.9 in 2015	3 70.2 in 1941	3 18.23 in 1947	3 2.36 in 2006
4 77.8 in 2020	4 70.5 in 1983	4 17.77 in 1930	4 2.44 in 1902
5 77.0 in 2012	5 70.8 in 1960	5 16.85 in 1933	5 2.54 in 1974
6 76.9 in 1997	6 71.1 in 1971	6 15.70 in 1941	6 2.69 in 2001
7 76.6 in 1991	71.1 in 1916	7 15.39 in 1957	7 3.37 in 1953
8 76.4 in 2002	71.1 in 1910	8 14.93 in 2022	8 3.42 in 1964
9 76.3 in 2003	9 71.2 in 1940	9 14.62 in 1991	9 3.45 in 1927
10 76.2 in 2011	71.2 in 1926	10 14.26 in 2018	10 3.93 in 2017
76.2 in 1995			
76.2 in 1994			

Average Temperature for March 1 - May 26, 2024 = 76.7°
Normal Temperature for Spring at FMY = 74.8°

Total Rainfall for March 1 - May 26, 2024 = 6.84 inches
Normal Rainfall for Spring at FMY = 7.97 in.

For more Climate information visit our web site at the following link:
<http://www.weather.gov/tampabay> and then go to the Climate and Past Weather
drop down menu above the graphical forecast images.