



NOAA - National Weather Service

Tampa Bay Area

2525 14th Avenue SE, Ruskin, Florida 33570

813-645-2323 <https://weather.gov/tampabay>

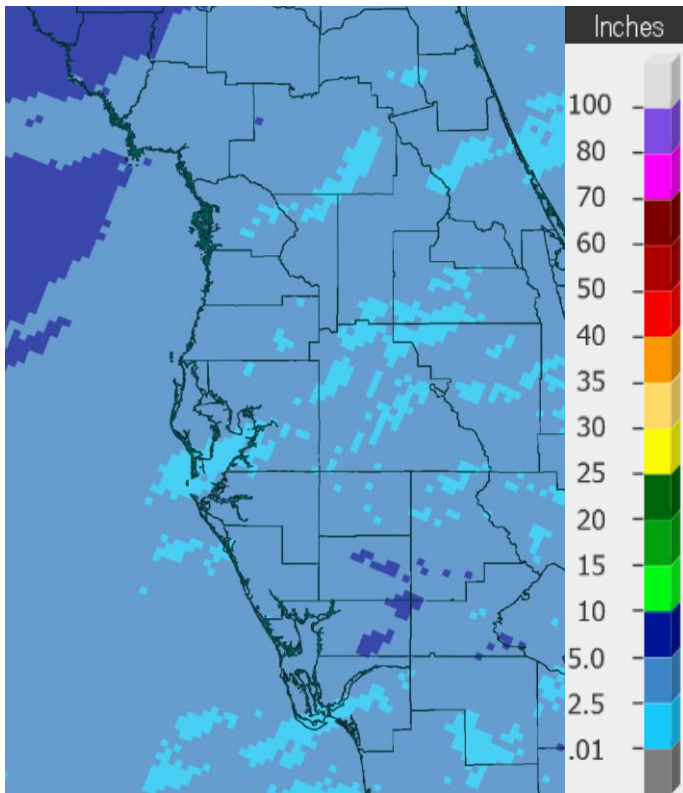
Moderate Drought Develops across West Central and Southwest Florida

[Included are listings of the Top Ten Driest Months/Driest January through March and Driest November (prev year) through March at some locations across West Central and Southwest Florida]

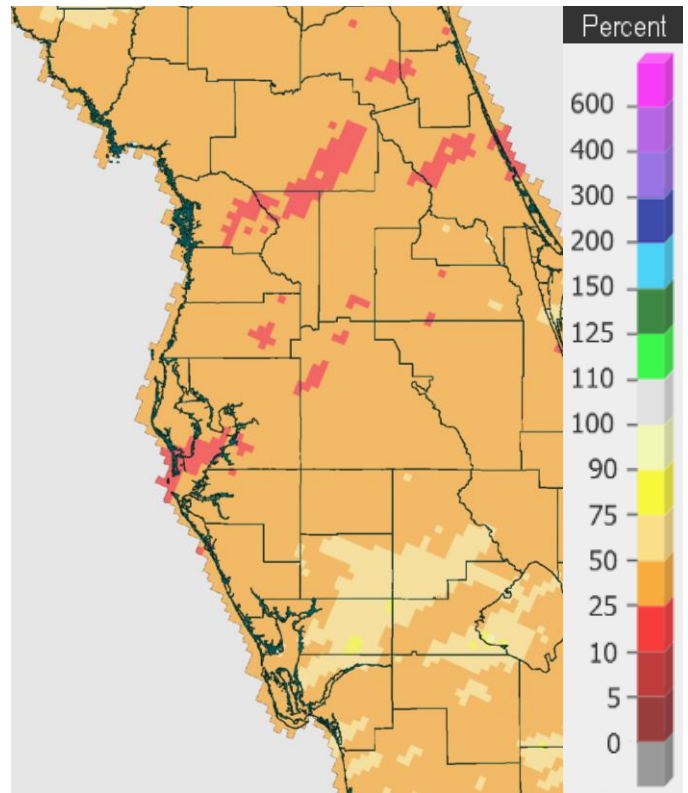
Very little if any rainfall fell across most of West Central and Southwest Florida during March (see [March Climate Summary](#)), but this dry trend began during last Autumn, and especially since the beginning of this year, with all locations running below normal for the year.

JANUARY THROUGH MARCH RAINFALL RANKINGS (Driest - inches):

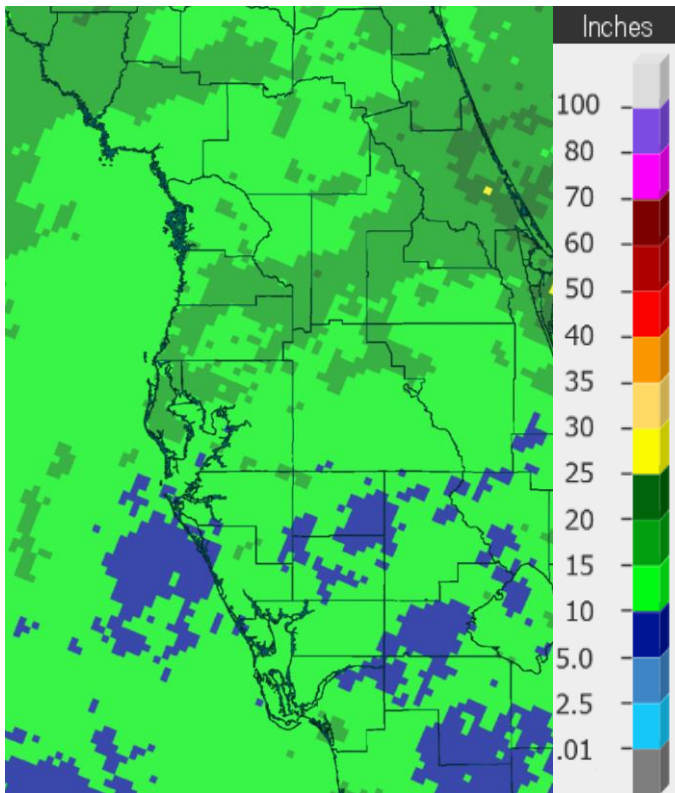
Location	Jan - Mar 2020		Normal Rain	Dep fm Normal	Record/	Records Began
	Rank	Rainfall			Prev Rec Driest	
Winter Haven Area	2nd	2.16	8.68	-6.52	1.94/1956	Mar 1941
Chiefland 5 SE	2nd	3.58	12.30	-8.72	3.54/2013	Jun 1956
Lakeland Area	3rd	2.09	9.53	-7.44	1.24/1949	Jan 1915
Venice	3rd	2.16	8.49	-6.33	1.38/1974	Apr 1955
Bushnell 1 E	3rd	2.52	10.38	-7.86	1.88/2000	Jul 1948
Inverness 3 SE	4th(tie)	3.08	10.27	-7.19	2.28/2013	Jul 1948
Plant City	6th	2.49	9.01	-6.52	0.98/1907	Sep 1892
St Leo	6th(tie)	3.19	10.48	-7.29	1.43/1907	Apr 1895
St Petersburg Area	8th	2.05	9.04	-6.99	1.18/1949	Aug 1914
Brooksville Area	10th	3.49	10.29	-6.80	2.42/2012	Jan 1892
Bartow	11th	2.58	8.21	-5.63	1.55/1949	Jun 1892
Tampa Area	11th	2.91	8.07	-5.16	0.74/1949	Apr 1890
Tarpon Springs	15th	4.01	9.73	-5.72	1.89/1907	Jan 1892
Archbold Bio Stn	19th	5.45	8.24	-2.79	1.47/1974	Jan 1969
Fort Myers Area	21st	2.44	6.97	-4.53	0.21/1949	Jan 1902
Punta Gorda Area	22nd	3.34	7.61	-4.27	0.71/1974	May 1914
Sarasota-Bradenton Area	24th	3.98	9.05	-5.07	0.91/1949	Jan 1911
Arcadia	37th	4.29	7.64	-3.35	0.93/1916	Jan 1899



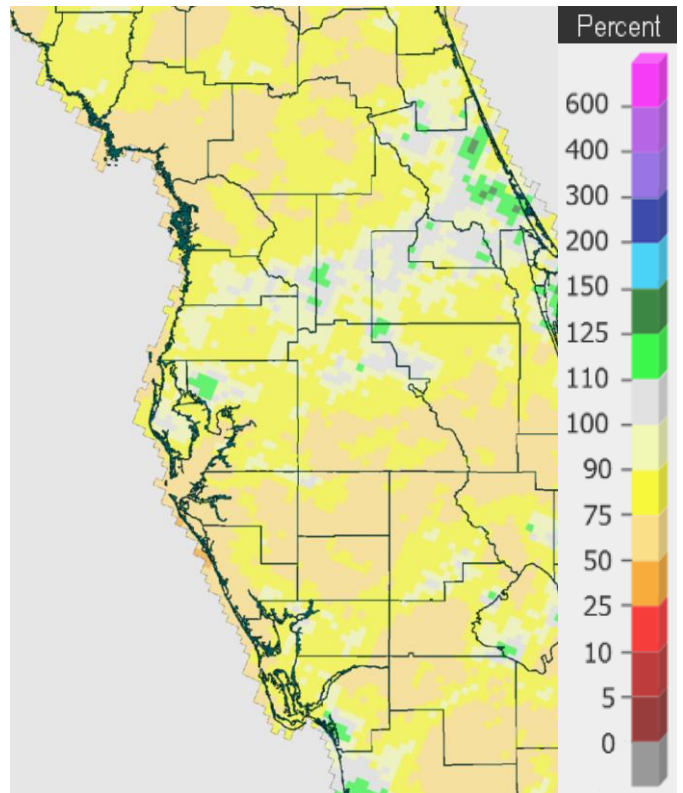
Rainfall Jan 1 - Apr 1 2020



Percent of Normal



Rainfall Oct 1 2019 - Apr 1 2020



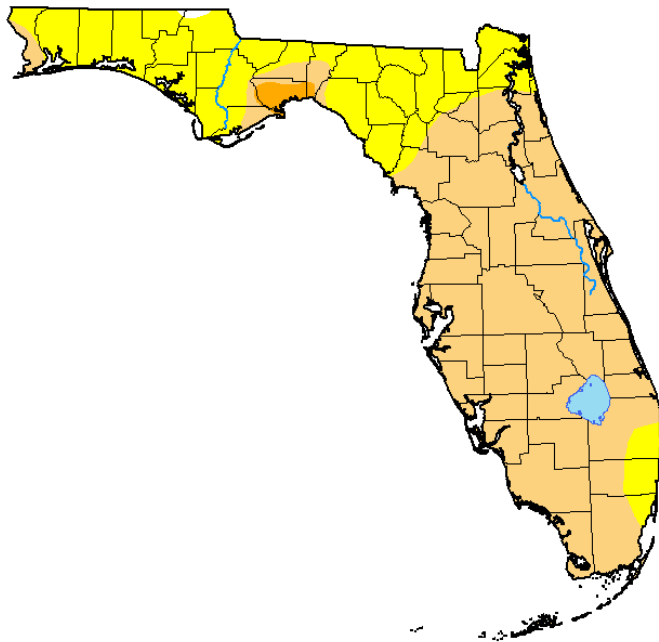
Percent of Normal

However, this is our "Dry Season" and not that unusual for this time of year, but over the last five to six months we have seen less than what is considered normal rainfall in most locations across West Central and Southwest Florida. This continued dry weather has begun to affect the soil moisture which can be seen in the browning lawns that do not have sprinklers. Therefore, Moderate Drought conditions have developed across West Central and Southwest Florida and will likely continue and possibly deteriorate more over the next month or two as our Summer Thunderstorm Season usually does not arrive until late May or June.

It is important to remember that Year-Round Water Restrictions are in effect in most locations across our area so be sure to check with your local city/county for the proper watering days and times. More details and links to water restrictions can be found on our [Local Drought/Rainfall](#) page.

U.S. Drought Monitor
Florida

March 31, 2020
(Released Thursday, Apr. 2, 2020)
Valid 8 a.m. EDT



Intensity:

- None
- D0 Abnormally Dry
- D1 Moderate Drought
- D2 Severe Drought
- D3 Extreme Drought
- D4 Exceptional Drought

The Drought Monitor focuses on broad-scale conditions. Local conditions may vary. For more information on the Drought Monitor, go to <https://droughtmonitor.unl.edu/About.aspx>

Author:

David Simeral
Western Regional Climate Center

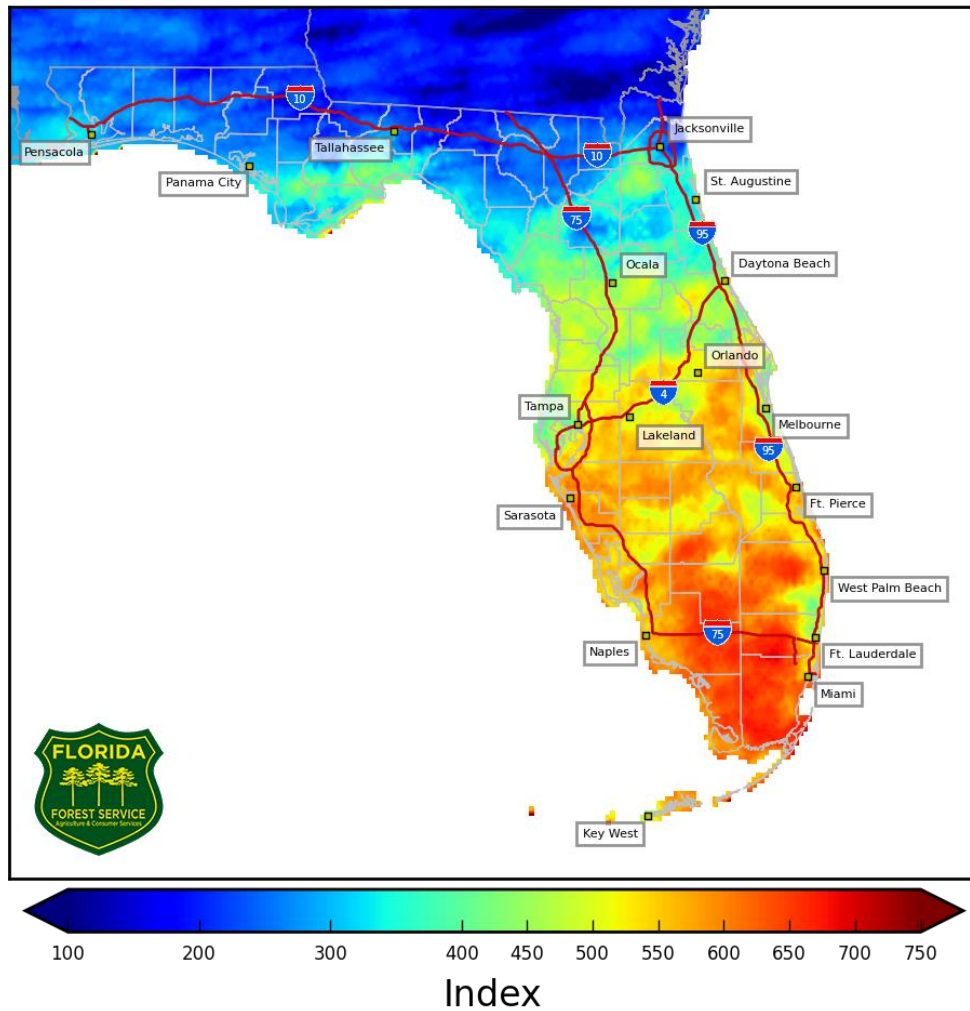


droughtmonitor.unl.edu

Category	Impact
D0	Small brush fires increase
	Increased landscape irrigation is needed; voluntary water conservation is requested
D1	Burn bans are possible
	Trees and bushes begin browning
D2	Water supply decreases
	Pasture is drying, hay yields are low
	Large increase of wildfire abundance; fire danger is elevated; burn bans are implemented
	Lawns and landscapes go dormant
	Bears and snakes change food and water habitats
D3	Air and water quality are poor; water salinity is high; river and lake levels are low
	Fire danger is extreme; fire restrictions increase
	Saltwater species replace freshwater species; sea intrusion
	Nesting bird populations grow with increased nesting area; mosquitoes increase
D4	Fish kills occur; toxic algae blooms appear
	Ground water declines; Lake Okeechobee is extremely low
	Ground water declines rapidly
	Large municipalities use alternative water sources, borrow water

These dry conditions can also be seen in the Keetch-Byram Drought Index (KBDI) which gives an indication of the dryness of the soil and surface fuels. It uses a scale that ranges from 0 (no moisture deficit) to 800. High values of the KBDI are an indication that conditions may be favorable for the occurrence and spread of wildfires. As seen below, the KBDI values are over 500 from about Interstate 4 southward, with portions of Manatee, Sarasota, Hardee, Highlands, Charlotte, and Lee counties over 600.

4 km Resolution KBDI Statewide April 01, 2020



On the following pages are tables of the Top Ten Driest Months, Driest Marches, Driest January through March, and Driest November through March at some official NWS locations, which include the average/total for this season where available, and the 1981-2010 Normal (average) rainfall for these time periods.

CHIEFLAND 5 SE (Records began in June 1956):

Driest Months		Driest Marches		Driest Jan-Mar		Driest Nov-Mar	
1	0.00 in Oct 2010	1	0.06 in 2006	1	3.54 in 2013	1	6.07 in 2016-17
	0.00 in May 2001	2	0.15 in 2020	2	3.58 in 2020	2	8.17 in 2012-13
	0.00 in Apr 1967	3	0.63 in 2017	3	3.62 in 2017	3	8.47 in 2001-02
	0.00 in Dec 1956	4	0.69 in 2013	4	4.41 in 1976	4	9.12 in 1961-62
5	Trace in Nov 1978	5	0.71 in 1976	5	5.19 in 1989	5	9.50 in 2011-12
6	0.05 in May 2000	6	0.74 in 2019	6	5.26 in 2019	6	9.67 in 1975-76
7	0.06 in Mar 2006	7	0.95 in 2007	7	5.27 in 1962	7	9.75 in 1999-00
8	0.11 in Oct 2001	8	0.99 in 1967	8	5.57 in 1997	8	10.38 in 1998-99
9	0.12 in Feb 1962	9	1.26 in 2004	9	6.61 in 2000	9	10.41 in 1956-57
10	0.14 in Oct 1973	10	1.27 in 1979	10	6.80 in 2015	10	10.50 in 2008-09
11	0.15 in Mar 2020					...	
	in Nov 2012					19	14.11 in 2019-20
	in Oct 1979						
	in Oct 1974						

Normal Rainfall for March at CHIF1 = 4.58 inches

Normal Rainfall for January - March at CHIF1 = 12.30 inches

Normal Rainfall for November - March at CHIF1 = 17.67 inches

INVERNESS 3 SE (Records began in July 1948):

Driest Months		Driest Marches		Driest Jan-Mar		Driest Nov-Mar	
1	0.00 in Nov 2004	1	0.00 in 1956	1	2.28 in 2013	1	3.70 in 2012-13
	0.00 in Nov 1978	2	Trace in 2020	2	2.47 in 1949	2	4.50 in 1955-56
	0.00 in Apr 1967	3	0.01 in 2006	3	2.91 in 2009	3	5.61 in 2004-05
	0.00 in Mar 1956	4	0.17 in 2019	4	3.08 in 2020	4	6.09 in 2011-12
	0.00 in Jan 1950	5	0.56 in 2012		3.08 in 1956	5	6.25 in 1975-76
6	Trace in Oct 2020	6	0.65 in 2013	6	3.71 in 1976	6	6.59 in 1949-50
	Trace in Oct 1974	7	0.66 in 1967	7	4.21 in 2005	7	7.06 in 1999-00
8	0.01 in Mar 2016	8	0.77 in 1961	8	4.29 in 1950	8	7.22 in 1984-85
	0.01 in Mar 2006	9	0.80 in 1949	9	4.32 in 2012	9	7.50 in 1950-51
10	0.02 in Nov 1950	10	0.83 in 1966	10	4.67 in 2007	10	7.61 in 2016-17
							7.61 in 1998-99
						12	7.65 in 1948-49
						13	7.96 in 1960-61
						14	7.97 in 1991-92
						15	8.16 in 2019-20

Normal Rainfall for March at INV1 = 4.32 inches

Normal Rainfall for January - March at INV1 = 10.27 inches

Normal Rainfall for November - March at INV1 = 14.44 inches

BUSHNELL 1 E (Records began in July 1948):

Driest Months	Driest Marches	Driest Jan-Mar	Driest Nov-Mar
1 0.00 in Mar 2020	1 0.00 in 2020	1 1.88 in 2000	1 3.63 in 2008-09
0.00 in Nov 2016	0.00 in 2006	2 1.89 in 2009	2 3.85 in 2011-12
0.00 in Oct 2010	3 0.12 in 1966	3 2.52 in 2020	3 4.82 in 2012-13
0.00 in Nov 2008	4 0.23 in 1956	4 2.93 in 2012	4 5.44 in 1949-50
0.00 in Mar 2006	5 0.58 in 2013	5 3.04 in 2013	5 5.63 in 2016-17
0.00 in Dec 1984	6 0.59 in 1994	6 3.55 in 1954	6 5.97 in 1999-00
0.00 in Apr 1981	7 0.64 in 2017	7 3.65 in 1950	7 6.13 in 1984-85
0.00 in Apr 1967	8 0.67 in 2000	8 4.25 in 1976	8 6.80 in 1975-76
9 0.02 in Nov 1978	9 0.73 in 2012	9 4.52 in 1985	9 7.61 in 1960-61
10 0.03 in Nov 1960	10 0.82 in 1961	10 5.21 in 2017	10 8.03 in 1966-67
0.03 in Jan 1950			...
			24 11.26 in 2019-20

Normal Rainfall for March at BSHF1 = 3.93 inches
 Normal Rainfall for January - March at BSHF1 = 10.38 inches
 Normal Rainfall for November - March at BSHF1 = 15.08 inches

BROOKSVILLE AREA (Records began in January 1892):

Driest Months	Driest Marches	Driest Jan-Mar	Driest Nov-Mar
1 0.00 in Oct 2010	1 Trace in 1956	1 2.42 in 2012	1 3.32 in 2011-12
0.00 in Nov 1967	2 0.02 in 2020	2 2.45 in 2000	2 4.39 in 2008-09
3 Trace in Apr 2017	3 0.04 in 2006	3 2.68 in 1917	3 4.57 in 1944-45
Trace in Nov 2016	4 0.07 in 2017	4 2.73 in 1898	4 5.26 in 1938-39
Trace in May 1977	5 0.10 in 1908	5 2.82 in 1911	5 5.59 in 1910-11
Trace in Apr 1967	6 0.15 in 1898	6 2.85 in 2009	6 5.94 in 2012-13
Trace in Mar 1956	7 0.16 in 1916	7 3.38 in 1945	7 5.99 in 1897-98
Trace in Jan 1950	8 0.17 in 2019	8 3.40 in 1939	8 6.54 in 1975-76
Trace in Nov 1931	0.17 in 1945	9 3.48 in 1921	9 6.90 in 1908-09
10 0.01 in Nov 1978	10 0.20 in 1904	10 3.49 in 2020	10 7.08 in 1998-99
0.01 in Oct 1974			...
0.01 in Dec 1955			39 10.35 in 2019-20
13 0.02 in Mar 2020			

Normal Rainfall for March at BKV = 3.70 inches
 Normal Rainfall for January - March at BKV = 10.29 inches
 Normal Rainfall for November - March at BKV = 14.59 inches

ST LEO (Records began in April 1895):

Driest Months	Driest Marches	Driest Jan-Mar	Driest Nov-Mar
1 0.00 in Mar 2020	1 0.00 in 2020	1 1.43 in 1907	1 2.26 in 1906-07
0.00 in Oct 2010	2 Trace in 1907	2 2.13 in 1898	2 4.34 in 2016-17
0.00 in Jan 1950	3 0.01 in 1895	3 2.29 in 1916	3 4.52 in 2011-12
4 Trace in Apr 1967	4 0.02 in 2006	4 2.49 in 1949	4 4.92 in 1934-35
Trace in Nov 1960	5 0.10 in 1908	5 2.91 in 1911	5 5.32 in 2008-09
Trace in Mar 1907	6 0.19 in 1904	6 3.19 in 2020	6 5.64 in 1948-49
7 0.01 in Feb 1911	7 0.30 in 1949	3.19 in 2009	7 5.76 in 1938-39
0.01 in Mar 1895	8 0.33 in 1956	8 3.25 in 2000	8 6.01 in 2012-13
9 0.02 in Mar 2006	9 0.38 in 1917	9 3.51 in 1938	9 6.09 in 1897-98
0.02 in Nov 1978	10 0.47 in 1898	10 3.64 in 1935	10 6.25 in 1910-11
			...
			34 9.67 in 2019-20

Normal Rainfall for March at STLf1 = 4.15 inches
 Normal Rainfall for January - March at STLf1 = 10.48 inches
 Normal Rainfall for November - March at STLf1 = 15.43 inches

TARPON SPRINGS (Records began in January 1892):

Driest Months	Driest Marches	Driest Jan-Mar	Driest Nov-Mar
1 0.00 in Mar 2020	1 0.00 in 2020	1 1.89 in 1907	1 3.27 in 1906-07
0.00 in Nov 2016	0.00 in 1907	2 1.94 in 1898	2 3.77 in 1938-39
0.00 in May 2001	3 0.02 in 2006	3 2.08 in 1916	3 3.91 in 1934-35
0.00 in May 2000	4 0.04 in 1908	4 2.35 in 2007	4 4.19 in 2008-09
0.00 in Apr 1967	5 0.11 in 1949	5 2.53 in 1911	5 4.65 in 2016-17
0.00 in Jan 1950	6 0.26 in 1898	6 2.55 in 2009	6 4.95 in 1975-76
0.00 in Mar 1907	7 0.34 in 1956	7 2.55 in 1976	7 5.50 in 1910-11
8 Trace in Nov 1939	8 0.47 in 1945	8 2.94 in 2000	8 5.59 in 2006-07
Trace in Nov 1931	9 0.53 in 1935	9 3.02 in 1935	9 5.68 in 1944-45
Trace in May 1927	10 0.59 in 2017	10 3.06 in 1939	10 5.92 in 1897-98
Trace in Apr 1896		11 3.13 in 1917	...
		12 3.25 in 2006	37 9.99 in 2019-20
		13 3.35 in 1920	
		14 3.58 in 1951	
		15 4.01 in 2020	

Normal Rainfall for March at TRPF1 = 3.81 inches
 Normal Rainfall for January - March at TRPF1 = 9.73 inches
 Normal Rainfall for November - March at TRPF1 = 14.83 inches

TAMPA AREA (Records began in April 1890):

Driest Months	Driest Marches	Driest Jan-Mar	Driest Nov-Mar
1 Trace in Mar 2020	1 Trace in 2020	1 0.74 in 1949	1 1.97 in 1906-07
Trace in Oct 2010	Trace in 2006	2 1.32 in 1907	2 3.62 in 1975-76
Trace in Mar 2006	Trace in 1907	3 1.97 in 1916	3 3.65 in 1934-35
Trace in May 2001	4 0.06 in 1956	4 2.02 in 1898	4 3.94 in 1948-49
Trace in Apr 1981	5 0.08 in 1908	5 2.46 in 1935	5 4.24 in 1938-39
Trace in Apr 1967	0.08 in 1898	6 2.53 in 1976	6 4.39 in 2016-17
Trace in Nov 1960	7 0.20 in 1945	7 2.59 in 1923	7 4.43 in 1931-32
Trace in Jan 1950	8 0.22 in 1949	8 2.66 in 2000	8 4.68 in 1917-18
Trace in Mar 1907	9 0.35 in 2018	9 2.69 in 1917	9 5.15 in 1897-98
10 0.01 in Nov 2016	10 0.41 in 2000	10 2.89 in 1997	10 5.37 in 2011-12
0.01 in Nov 1978		11 2.91 in 2020	5.37 in 1998-99
			...
			37 7.96 in 2019-20
			7.96 in 2004-05

Normal Rainfall for March at TPA = 3.03 inches
 Normal Rainfall for January - March at TPA = 8.07 inches
 Normal Rainfall for November - March at TPA = 12.09 inches

ST PETERSBURG AREA (Records began in August 1914):

Driest Months	Driest Marches	Driest Jan-Mar	Driest Nov-Mar
1 0.00 in Mar 2020	1 0.00 in 2020	1 1.18 in 1949	1 2.57 in 1938-39
0.00 in Apr 1967	2 0.03 in 1956	2 1.31 in 1956	2 2.64 in 2016-17
0.00 in May 1953	3 0.09 in 2006	3 1.44 in 1916	3 2.89 in 2011-12
0.00 in Oct 1942	0.09 in 1939	4 1.54 in 1976	4 3.00 in 1934-35
0.00 in Nov 1931	5 0.19 in 1917	5 1.80 in 1935	5 3.19 in 1975-76
6 Trace in Oct 2010	6 0.24 in 1916	6 1.87 in 2012	6 4.26 in 1955-56
Trace in May 2007	7 0.31 in 2002	7 2.01 in 1939	7 4.29 in 1917-18
Trace in Apr 1981	0.31 in 1949	8 2.05 in 2020	8 4.60 in 2008-09
Trace in Jan 1950	9 0.37 in 1945	9 2.27 in 2013	9 4.66 in 1948-49
10 0.01 in Apr 1974	10 0.40 in 2012	10 2.33 in 2017	10 4.85 in 2012-13
			...
			21 7.22 in 2019-20

Normal Rainfall for March at SPG = 3.75 inches
 Normal Rainfall for January - March at SPG = 9.04 inches
 Normal Rainfall for November - March at SPG = 13.69 inches

PLANT CITY (Records began in September 1892):

Driest Months		Driest Marches		Driest Jan-Mar		Driest Nov-Mar	
1	0.00 in Apr 2001	1	0.00 in 1908	1	0.98 in 1907	1	1.43 in 1906-07
	0.00 in Apr 1981		0.00 in 1907	2	1.38 in 1949	2	3.51 in 1975-76
	0.00 in Apr 1967	3	0.01 in 2006	3	1.56 in 1916	3	3.84 in 2016-17
	0.00 in Nov 1960	4	0.02 in 2020	4	1.57 in 1898	4	4.40 in 1934-35
	0.00 in Jan 1950	5	0.08 in 1999	5	1.94 in 1976	5	4.53 in 2011-12
	0.00 in Nov 1931	6	0.21 in 1945	6	2.49 in 2020	6	4.74 in 1944-45
	0.00 in Feb 1911	7	0.32 in 1916	7	2.55 in 1997	7	4.94 in 1910-11
	0.00 in Dec 1908	8	0.39 in 1975	8	2.69 in 2012	8	5.07 in 1897-98
	0.00 in Mar 1908	9	0.40 in 2017	9	3.15 in 1911	9	5.46 in 1967-68
	0.00 in Mar 1907	10	0.46 in 2002	10	3.37 in 2017	10	5.49 in 1948-49
	0.00 in Nov 1905				3.37 in 1935	11	6.01 in 2008-09
12	Trace in Feb 1918					12	6.13 in 2012-13
	Trace in Jan 1905					13	6.35 in 1917-18
14	0.01 in Nov 2007					14	6.91 in 2001-02
	0.01 in Mar 2006					15	7.02 in 1942-43
	0.01 in May 2001					16	7.09 in 2019-20
17	0.02 in Mar 2020						

Normal Rainfall for March at PLCF1 = 3.57 inches

Normal Rainfall for January - March at PLCF1 = 9.01 inches

Normal Rainfall for November - March at PLCF1 = 13.50 inches

LAKELAND AREA (Records began in January 1915):

Driest Months		Driest Marches		Driest Jan-Mar		Driest Nov-Mar	
1	0.00 in Mar 2020	1	0.00 in 2020	1	1.24 in 1949	1	3.49 in 2011-12
	0.00 in Oct 2010	5	0.22 in 2006	2	1.75 in 1916	2	3.90 in 1934-35
	0.00 in Apr 1967		0.22 in 1916	3	2.09 in 2020	3	4.41 in 1948-49
	0.00 in Nov 1924	4	0.53 in 1925	4	2.80 in 2012	4	5.30 in 2012-13
5	Trace in Nov 1916	5	0.57 in 2009	5	2.83 in 1976	5	5.31 in 1928-29
	Trace in Nov 1960	6	0.63 in 2000	6	3.02 in 2000	6	6.22 in 2016-17
	Trace in Feb 1918	7	0.67 in 2007	7	3.06 in 1956	7	6.27 in 1931-32
	Trace in Dec 1917	8	0.68 in 2002	8	3.18 in 1935	8	6.31 in 1999-00
	Trace in Nov 1917	9	0.69 in 2017	9	3.28 in 1954	9	6.35 in 1955-56
10	0.03 in Nov 1931	10	0.74 in 2012	10	3.33 in 2013		6.35 in 1915-16
						...	
						25	7.95 in 2019-20

Normal Rainfall for March at LLDF1 = 3.89 inches

Normal Rainfall for January - March at LLDF1 = 9.53 inches

Normal Rainfall for November - March at LLDF1 = 14.43 inches

WINTER HAVEN AREA (Records began in January 1941):

Driest Months	Driest Marches	Driest Jan-Mar	Driest Nov-Mar
1 0.00 in Apr 1981	1 0.14 in 2020	1 1.94 in 1956	1 3.54 in 2011-12
0.00 in Apr 1967	2 0.30 in 1956	2 2.16 in 2020	2 4.09 in 2012-13
0.00 in Nov 1960	3 0.38 in 2006	3 2.32 in 2013	3 4.31 in 2017-18
4 Trace in Nov 2011	4 0.48 in 2002	4 3.11 in 2000	4 4.61 in 2016-17
5 0.01 in Nov 2012	5 0.57 in 1945	5 3.19 in 2009	5 5.24 in 1955-56
6 0.02 in Oct 2010	6 0.58 in 2018	6 3.21 in 2012	6 6.51 in 2008-09
0.02 in Jan 1950	0.58 in 2017	3.21 in 1976	6.51 in 1974-75
8 0.03 in May 2000	8 0.60 in 2000	8 3.28 in 2017	8 6.60 in 1944-45
0.03 in Dec 1987	9 0.61 in 2007	9 3.45 in 2018	9 6.66 in 1967-68
0.03 in Dec 1984	10 0.64 in 1999	10 3.95 in 2006	10 7.16 in 1999-00
11 0.07 in Nov 2016			11 7.54 in 2005-06
0.07 in Dec 1990			12 7.58 in 1942-43
13 0.13 in Nov 1966			13 7.59 in 1996-97
14 0.14 in Mar 2020			14 7.65 in 1948-49
0.14 in Jan 1949			15 7.68 in 1973-74
			16 7.75 in 1970-71
			17 7.94 in 2019-20

Normal Rainfall for March at GIF = 3.57 inches

Normal Rainfall for January - March at GIF = 8.68 inches

Normal Rainfall for November - March at GIF = 13.44 inches

BARTOW (Records began in June 1892):

Driest Months	Driest Marches	Driest Jan-Mar	Driest Nov-Mar
1 0.00 in Mar 2020	1 0.00 in 2020	1 1.55 in 1949	1 2.89 in 2011-12
0.00 in Nov 2016	2 0.02 in 1908	2 1.96 in 1916	2 3.45 in 1944-45
0.00 in Oct 2000	3 0.05 in 1945	3 2.02 in 1898	3 3.84 in 1938-39
0.00 in Apr 1967	4 0.10 in 2006	4 2.05 in 2006	4 4.01 in 1910-11
0.00 in Nov 1960	5 0.36 in 2002	5 2.10 in 1911	5 4.06 in 1934-35
0.00 in Feb 1911	6 0.41 in 1999	6 2.14 in 1956	6 4.13 in 2016-17
0.00 in Dec 1906	7 0.45 in 2007	7 2.26 in 2012	4.13 in 2005-06
8 Trace in Apr 2000	8 0.46 in 1897	2.26 in 1939	8 4.32 in 2008-09
Trace in Apr 1907	9 0.47 in 1967	9 2.32 in 2000	9 4.44 in 1948-49
10 0.02 in May 1965	10 0.52 in 1921	10 2.37 in 1950	10 5.31 in 1955-56
0.02 in Nov 1931		11 2.58 in 2020	...
0.02 in Mar 1908			21 6.59 in 2019-20

Normal Rainfall for March at BARF1 = 3.48 inches

Normal Rainfall for January - March at BARF1 = 8.21 inches

Normal Rainfall for November - March at BARF1 = 12.87 inches

SARASOTA-BRADENTON AREA (Records began in January 1911):

Driest Months		Driest Marches		Driest Jan-Mar		Driest Nov-Mar	
1	0.00 in Apr 1967	1	Trace in 1939	1	0.91 in 1949	1	2.22 in 1975-76
	0.00 in Jan 1950	2	0.10 in 1945	2	1.12 in 1976	2	2.38 in 1938-39
	0.00 in Oct 1942	3	0.21 in 1949	3	1.82 in 1956	3	2.77 in 1934-35
	0.00 in May 1941	4	0.26 in 1956	4	1.83 in 1939	4	3.46 in 1948-49
	0.00 in Dec 1933	5	0.28 in 2007	5	1.85 in 1935	5	4.22 in 1931-32
	0.00 in Nov 1931	6	0.34 in 1935	6	2.13 in 1916	6	4.24 in 2016-17
7	Trace in Apr 2017	7	0.37 in 1976	7	2.19 in 2013	7	4.29 in 2012-13
	Trace in Oct 2010	8	0.44 in 1917	8	2.26 in 1917	8	4.37 in 2011-12
	Trace in May 2007	9	0.47 in 2004	9	2.35 in 2000	9	4.53 in 1955-56
	Trace in Nov 1940	10	0.48 in 2017	10	2.67 in 1975	10	4.60 in 1944-45
	Trace in Mar 1939	
	Trace in Nov 1928	32	1.14 in 2020	24	3.98 in 2020	23	7.31 in 2019-20
	Trace in Feb 1911						

Normal Rainfall for March at SRQ = 3.86 inches

Normal Rainfall for January - March at SRQ = 9.05 inches

Normal Rainfall for November - March at SRQ = 13.51 inches

VENICE (Records began in April 1955):

Driest Months		Driest Marches		Driest Jan-Mar		Driest Nov-Mar	
1	0.00 in Mar 2020	1	0.00 in 2020	1	1.38 in 1974	1	3.85 in 1975-76
	0.00 in Oct 2010	2	0.10 in 1956	2	2.02 in 2009	2	4.39 in 1973-74
	0.00 in Feb 2001	3	0.14 in 2009	3	2.16 in 2020	3	4.50 in 2011-12
	0.00 in Nov 1991	4	0.19 in 1981	4	2.62 in 1976	4	4.53 in 2016-17
	0.00 in Apr 1967	5	0.33 in 1977	5	2.73 in 2012	5	4.65 in 2008-09
6	0.02 in Nov 2007	6	0.36 in 2006	6	2.84 in 2003	6	5.04 in 1955-56
7	0.04 in Dec 2016	7	0.39 in 1967	7	2.90 in 1975	7	5.20 in 1996-97
	0.04 in Nov 2001	8	0.40 in 1974	8	2.95 in 2000	8	5.30 in 2019-20
9	0.06 in Nov 2016	9	0.53 in 2004	9	2.97 in 1968	9	5.88 in 1970-71
	0.06 in May 1994	10	0.54 in 2002	10	3.08 in 1956	10	6.02 in 2012-13
	0.06 in May 1989						
	0.06 in Apr 1975						

Normal Rainfall for March at VNCF1 = 3.81 inches

Normal Rainfall for January - March at VNCF1 = 8.49 inches

Normal Rainfall for November - March at VNCF1 = 12.63 inches

MYAKKA RIVER STATE PARK (Temperature records began in March 1956
and Rainfall records began in Sep 1943):

Driest Months		Driest Marches		Driest Jan-Mar		Driest Nov-Mar	
1	0.00 in Oct 2010	1	0.08 in 1956	1	1.38 in 1950	1	2.62 in 1944-45
	0.00 in Nov 2001	2	0.13 in 2006	2	1.40 in 1949	2	3.69 in 1975-76
	0.00 in Apr 2001	3	0.16 in 1945	3	1.95 in 1945	3	3.73 in 1949-50
	0.00 in Oct 1974	4	0.23 in 1966	4	2.45 in 1976	4	3.88 in 1948-49
	0.00 in Jan 1974	5	0.29 in 2002	5	2.55 in 1975	5	4.63 in 2011-12
	0.00 in Jan 1950		0.29 in 1977	6	2.70 in 1968	6	4.65 in 1943-44
7	Trace in Feb 2001	7	0.41 in 1953	7	3.26 in 2006	7	5.07 in 1955-56
	Trace in Apr 1981	8	0.42 in 1949	8	3.36 in 2009	8	5.40 in 2008-09
9	0.01 in Feb 1950	9	0.47 in 1974	9	3.41 in 2003	9	5.79 in 2017-18
10	0.02 in May 2007	10	0.48 in 2007	10	3.44 in 2012	10	5.82 in 2012-13
	0.02 in May 2000				3.44 in 1956		
	0.02 in Feb 1999						
	0.02 in Apr 1987						
	0.02 in Nov 1950						

Total Rainfall for March 1-29, 2020 = 0.00 inches
Normal Rainfall for March at MKCF1 = 3.86 inches

Total Rainfall for January - March 29, 2020 = 3.33 inches
Normal Rainfall for January - March at MKCF1 = 9.41 inches

Total Rainfall for November 2019 - March 29, 2020 = 7.80 inches
Normal Rainfall for November - March at MKCF1 = 14.02 inches

WAUCHULA 2 N (Records began in January 1933):

Driest Months		Driest Marches		Driest Jan-Mar		Driest Nov-Mar	
1	0.00 in Apr 2001	1	0.00 in 2002	1	1.45 in 1974	1	2.38 in 2011-12
	0.00 in Feb 2001	2	0.08 in 1967	2	1.46 in 1949	2	3.04 in 1975-76
	0.00 in Oct 2000	3	0.18 in 1945	3	1.92 in 2012	3	3.13 in 1948-49
	0.00 in May 2000	4	0.20 in 1935	4	2.08 in 1976	4	3.40 in 1934-35
	0.00 in Apr 1978	5	0.22 in 2012	5	2.12 in 1935	5	3.84 in 1944-45
	0.00 in Apr 1967	6	0.30 in 2006	6	2.57 in 2013	6	3.99 in 1973-74
7	Trace in Oct 1940		0.30 in 1974		2.57 in 1939	7	4.42 in 2012-13
8	0.01 in May 1965	8	0.35 in 1976	8	2.73 in 1956	8	4.47 in 1938-39
9	0.02 in Nov 1940	9	0.57 in 2004	9	3.00 in 1975	9	4.58 in 1966-67
10	0.03 in Jan 1974		0.57 in 1939	10	3.10 in 1945	10	4.67 in 1955-56
	0.03 in Nov 1967						4.67 in 1932-33
	0.03 in Apr 1963						

Total Rainfall for March 1-25, 2020 = 0.00 inches
Normal Rainfall for March at WAUF1 = 3.79 inches

Total Rainfall for January - March 25, 2020 = 2.49 inches
Normal Rainfall for January - March at WAUF1 = 8.54 inches

Total Rainfall for November 2019 - March 25, 2020 = 7.65 inches
Normal Rainfall for November - March at WAUF1 = 12.83 inches

ARCADIA (Records began in January 1899):

Driest Months	Driest Marches	Driest Jan-Mar	Driest Nov-Mar
1 0.00 in Mar 2020	1 0.00 in 2020	1 0.93 in 1916	1 2.50 in 1948-49
0.00 in Feb 2001	2 0.02 in 1956	2 1.03 in 1920	2 3.00 in 1910-11
0.00 in Jan 1990	3 0.06 in 1935	3 1.17 in 1949	3 3.21 in 1955-56
0.00 in Apr 1987	4 0.10 in 1990	4 1.50 in 1956	4 3.32 in 1944-45
0.00 in Jan 1974	5 0.18 in 1939	5 1.69 in 1974	5 3.36 in 2000-01
0.00 in Apr 1970	6 0.23 in 1945	6 1.78 in 1911	6 3.43 in 1975-76
0.00 in Apr 1967	7 0.30 in 1974	7 1.94 in 1976	7 3.78 in 2016-17
0.00 in Jan 1950	8 0.31 in 1977	8 2.31 in 1945	3.78 in 1949-50
0.00 in Feb 1916	9 0.41 in 1976	9 2.42 in 2009	9 3.85 in 2008-09
0.00 in Jan 1916	10 0.43 in 1981	10 2.71 in 2013	10 3.92 in 1928-29
	
		37 4.29 in 2020	47 8.68 in 2019-20

Normal Rainfall for March at ARCF1 = 3.26 inches

Normal Rainfall for January - March at ARCF1 = 7.64 inches

Normal Rainfall for November - March at ARCF1 = 11.53 inches

ARCHBOLD BIO STN (Records began in January 1969):

Driest Months	Driest Marches	Driest Jan-Mar	Driest Nov-Mar
1 0.00 in Nov 2016	1 0.05 in 2020	1 1.47 in 1974	1 3.13 in 2016-17
0.00 in Oct 2010	0.05 in 1974	2 1.66 in 1975	2 3.55 in 2008-09
0.00 in Nov 2008	3 0.06 in 2002	3 1.80 in 2009	3 3.86 in 1970-71
0.00 in Feb 2001	4 0.22 in 2004	4 2.21 in 2007	4 4.02 in 1975-76
5 0.03 in Apr 2006	5 0.66 in 2007	5 2.59 in 2017	5 4.15 in 1973-74
6 0.05 in Mar 2020	6 0.76 in 1999	6 2.85 in 2018	6 4.27 in 2011-12
0.05 in Mar 1974	7 0.78 in 1972	7 2.91 in 2013	7 4.52 in 2000-01
8 0.06 in Mar 2002	8 0.87 in 2006	8 3.01 in 2012	8 4.66 in 2006-07
9 0.08 in Nov 1986	9 0.91 in 2009	9 3.29 in 1976	9 5.12 in 1974-75
0.08 in Jan 1976	10 1.01 in 2012	10 3.32 in 1999	10 5.70 in 2017-18
0.08 in Apr 1971	
		19 5.45 in 2020	23 9.44 in 2019-20

Normal Rainfall for March at ACHF1 = 3.77 inches

Normal Rainfall for January - March at ACHF1 = 8.24 inches

Normal Rainfall for November - March at ACHF1 = 12.14 inches

PUNTA GORDA AREA (Records began in May 1914):

Driest Months		Driest Marches		Driest Jan-Mar		Driest Nov-Mar	
1	0.00 in Apr 1981	1	0.00 in 1956	1	0.71 in 1974	1	2.62 in 1973-74
	0.00 in Apr 1963	2	Trace in 2020	2	1.47 in 1939	2	3.11 in 2016-17
	0.00 in Mar 1956		Trace in 1920	3	1.59 in 1923	3	3.16 in 1944-45
	0.00 in Feb 1950	4	0.09 in 2007	4	1.71 in 1950	4	3.40 in 1975-76
	0.00 in Jan 1950	5	0.10 in 1945	5	1.75 in 1916	5	3.56 in 1948-49
	0.00 in Jan 1949		0.10 in 1935	6	1.97 in 2009	6	3.58 in 1949-50
	0.00 in Apr 1946	7	0.15 in 1967	7	2.11 in 1949	7	3.86 in 2008-09
	0.00 in Oct 1942	8	0.16 in 1938	8	2.16 in 1976	8	3.97 in 1970-71
	0.00 in Dec 1933	9	0.21 in 1923	9	2.17 in 1945	9	4.06 in 1917-18
	0.00 in Nov 1931	10	0.28 in 2006	10	2.30 in 1921	10	4.07 in 2011-12
11	Trace in Mar 2020		0.28 in 1922	
	Trace in Apr 1975			22	3.34 in 2020	38	7.35 in 2019-20
	Trace in Apr 1967						
	Trace in Oct 1940						
	Trace in Mar 1920						

Normal Rainfall for March at PGD = 3.31 inches

Normal Rainfall for January - March at PGD = 7.61 inches

Normal Rainfall for November - March at PGD = 11.58 inches

FORT MYERS AREA (Records began in January 1902):

Driest Months		Driest Marches		Driest Jan-Mar		Driest Nov-Mar	
1	0.00 in Jan 1950	1	0.00 in 1935	1	0.21 in 1949	1	1.29 in 1948-49
	0.00 in Mar 1935	2	0.02 in 2020	2	0.57 in 1950	2	1.96 in 1938-39
3	Trace in Nov 2016	3	0.03 in 1974	3	0.78 in 1905	3	2.37 in 1910-11
	Trace in Feb 2001	4	0.04 in 1939	4	1.14 in 1911	4	2.40 in 1906-07
	Trace in Jan 2001	5	0.05 in 1956	5	1.20 in 1974	5	2.42 in 2000-01
	Trace in Nov 2000		0.05 in 1916	6	1.22 in 2009	6	2.61 in 1908-09
	Trace in Apr 1970	7	0.08 in 1907	7	1.36 in 2007	7	2.65 in 2016-17
	Trace in Apr 1967	8	0.09 in 1977		1.36 in 1939	8	3.00 in 2011-12
	Trace in Dec 1956	9	0.10 in 1945	9	1.48 in 1923	9	3.02 in 1973-74
	Trace in Nov 1944	10	0.13 in 2007	10	1.57 in 1916		3.02 in 1934-35
	Trace in Feb 1944		0.13 in 1949	
	Trace in Feb 1911			21	2.44 in 2020	66	8.75 in 2019-20
	Trace in Apr 1903						
...							
18	0.02 in Mar 2020						
	0.02 in Dec 1984						
	0.02 in Nov 1950						
	0.02 in Apr 1922						
	0.02 in Dec 1906						

Normal Rainfall for March at FMY = 2.88 inches

Normal Rainfall for January - March at FMY = 6.97 inches

Normal Rainfall for November - March at FMY = 10.64 inches

For more Climate information visit our web site at the following link:
<https://www.weather.gov/tampabay> and then go to the Climate and Past
Weather drop down menu above the graphical forecast images. Here you can
also find a page labeled "Local Drought/Rainfall" with more information.